

Petition for Chinese Rights

7



Dr. C. T. RODGERS,

Secretary,

Constitutional Convention.

Sir:-

May I have the honor of requesting you to hand to HON. SANFORD B. DOLE, President of the Constitutional Convention, the accompanying communication signed by the Committee of which I have the honor to be the Chairman.

I have the honor to be, Sir,

Your most obedient servant.

C. Williams



Patch #	1	2	3	4	5	6	7	8	9	10	11	12	13	14	15	16	17	18	19	20	21	22	23	24	25	26	27	28	29	30
L*	38.76	65.15	49.61	43.54	55.52	70.42	63.13	40.08	51.75	95.34	92.09	86.92	82.37	72.17	62.32	49.61	38.89	28.60	17.97	9.50	4.33	30.32	72.50	72.10	29.51	55.60	43.48	82.02	52.85	50.86
a*	13.81	19.21	-4.20	-12.89	8.78	-32.39	35.43	10.25	47.36	-0.90	-0.92	-1.12	-1.12	-1.05	-1.10	-1.29	-0.23	-1.09	0.04	0.45	0.32	22.13	-22.92	19.51	13.42	-38.46	50.74	3.28	49.90	-27.78
b*	14.69	17.92	-21.33	22.66	-24.31	-0.48	57.84	-44.77	18.93	1.90	1.46	0.57	0.56	-0.04	-0.01	-0.10	-0.48	0.07	0.09	0.25	-0.47	-19.02	56.08	67.85	-47.69	32.19	29.13	78.75	-12.86	-27.68
Density										0.05	0.09	0.16	0.22	0.36	0.52	0.75	0.98	1.24	1.64	1.96	2.38									

L. Winson
Accompanying
Chinese Petition
Presented June 25th 1894

To the President and the Executive and Advisory Councils
of the Provisional Government of the
Hawaiian Islands.

We, the undersigned most respectfully request your permission to present to your Excellencies and the Honorable Councilors the following statement and petition and ask of you to give it most careful consideration.

While the right of petition is denied by you to no one, we are, in this instance, constrained to address you directly, instead of through the customary Diplomatic Channels inasmuch as our Commercial Agents possess in the absence of a treaty between China and Hawaii, insufficient diplomatic authority to call your attention to the matters we most respectfully desire to present to you.

We wish to be fair and frank and prefer in the first place to invite your assistance in the interests of the adopted country of many of us, rather than to communicate with His Excellency, His Imperial Majesty's Representative at Washington before so doing.

We are also induced to take this informal manner of approaching you as a result of the recent elections conclusively show that a Constitutional Convention will shortly be held to remodel the constitution and the form of the Hawaiian Government.

We feel assured that your Honorable Councils will not controvert the statement that the Chinese possess very large and important vested interests in this country, and that they may justly claim to be considered among the heaviest payers of taxes, duties and other contributions to the revenues of the state in comparison with the people of all other nations. It is not deemed advisable to encumber this petition with statistics to prove this assertion.

It is known to you that the Chinese merchants and planters have always been firm supporters of the Constitutional Government of Hawaii. Our Societies have endeavored and are endeavoring to support our sick and poor and to send ~~xxx~~ out of the country the criminals and vagrants, without cost to the Government, if the Government will only strengthen our hands so that we can appeal to our Minister at Washington, and through him to the Imperial Authorities, we can and will do much more.

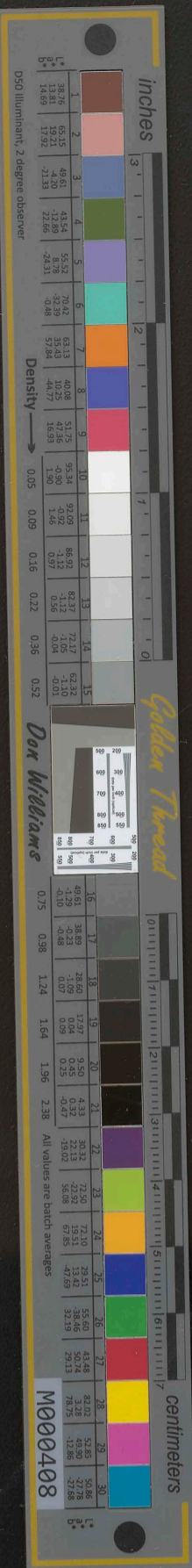
While we are thoroughly conversant with the fact that no Treaty exists between Hawaii and China we are also fully aware that negotiations for a Treaty have, in the past, been under consideration by the Representative Ministers of both countries and have failed.

It is our opinion that if, when the Constitutional Convention meets, it will not regard the Chinese residing in the Hawaiian Islands as a proscribed race, but will accord to them the privileges due to them by their influence, standing and wealth, that a Treaty of reciprocal benefit to Hawaii and China might result.

We who have made these Islands our home for many years

have increased the value of your lands from nominal prices to high ones, say from \$5. to \$250. an acre, thus increasing the revenue of the country, have inter married with Hawaiians who have given to us children born in this land, educated in your own schools, and inter married with your own race.

Many of us have become naturalized citizens of this country and have by our efforts brought to you considerable trade



have increased the value of your lands from nominal prices to high ones, say from \$5. to \$250. an acre, thus increasing the revenue of the country, have inter married with Hawaiians who have given to us children born in this land, educated in your own schools, and inter married ~~with~~ your own race.

Many of us have become naturalized citizens of this country and have by our efforts brought to you considerable trade and commerce. It has been alike beneficial to you as to us.

Therefore we think that we are entitled to some greater respect from the Government than has hitherto been politically accorded to us. We do not think that we should be regarded in the same light as our fellow-countrymen in the United States of America.

We have been associated with you so long commercially, financially, and socially, have learned your language, manners and customs, and have endeavored to assist you in every legitimate manner. Many of us in the early days received the encouragement of the Hawaiian Governments to assist in building up the commerce of the Islands. In the matter of trade alone we are not selfish, for we purchase many of our goods from the Importers of your own race.

Your experience and your interests tell you that the plantations sugar, rice and fruit, are almost "the life of the land". Laborers are required to cultivate these plantations, and for a certain class of work, especially on rice and banana plantations, the Chinese labor is the only one perfectly adapted to that work while in many other kinds of labor they are unequalled.

It seems to us doubtful if, under the existing circumstan-

ces, and to the what we regard as unjust restrictions placed upon our countrymen by the government, whether, if Chinese laborers are required here by the planters, directly or indirectly through the government or otherwise they can be obtained unless some privileges are accorded to us and to them. It stands to reason that we cannot be expected to assist others if injustice is done to us.

Before presenting the following petition to you we hereby guarantee that if our prayer meets with your respectful and favorable consideration to take such action by petition, or otherwise, as may influence the Imperial Chinese Government Officials to endeavor to obtain a more beneficial understanding between Hawaii and China, by Treaty or otherwise, than at present exists.

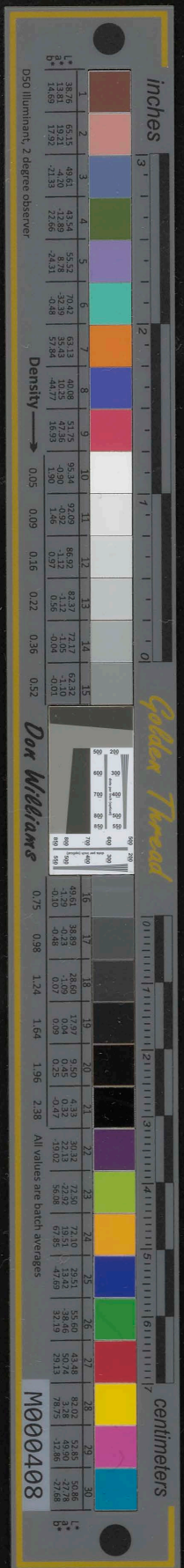
We therefore humbly pray that your Excellencies and the Honorable Councillors will place before the Constitutional Convention, when it meets, the following suggestions on our behalf.

- First. A negotiation either of a Treaty of friendship, commerce and navigation, or a labor convention, between the Hawaiian and Imperial Chinese Governments.
- Second. The granting of a franchise to all Chinese who have become naturalized subjects or citizens of the Hawaiian Islands, or who have been born therein, or born of Hawaiian wives.
- Third. A Representative in the Advisory Council or such body as may succeed it.
- Fourth. That the right of franchise be granted to all such Chinese as may be competent to qualify under the electoral provisions of the new constitution.
- Fifth. Reciprocity of treatment as under the most favored nation

clause " of Treaties with other powers, pending the consumation of a Treaty between Hawaii and The Imperial Chinese Government; or in other words equal rights with those of all other alien residents, subjects or citizens.

And your Petitioners will ever humbly pray, etc.

Honolulu, May 9th 1894.



clause " of Treaties with other powers, pending the consummation of a Treaty between Hawaii and The Imperial Chinese Government; or in other words equal rights with those of all other alien residents, subjects or citizens.

And your Petitioners will ever humbly pray, etc.

Honolulu, May 9th 1894.

Name	Occupation or calling	Name of Firm	Residence	No. of persons (Number of H. I.)	Naturalized or Hawaiian Born	Having Hawaiian Wives	Chinese Wives	No. of children in this country	No. of children born in H. I.	Children under Education in H. I.
Gook Kien	merchant	Gook Kien	Maunaloa	30		1		3	2	1
Wong Kwei	Rice Planter	Wong Kwei	do	40			1		1	
L. Mau	Merchant	Wing Kee	Hotel St	12	Naturalized		1			
Lau Chong	do	Wing Mo Sai	Maunaloa St	17	do		1	4	4	3
Yick Hing	Indigeter	Emma	Emma St	13	do		1	8	5	4
Chang Sim	Law Clerk	do	do	20	do		1	7	7	
Wong Chou	Merchant	do	do	17	do		1	6	6	4
Chun Ming	do	Yee Wo Chan	Maunaloa St	15	do		1	5	5	1
Hong Wai	do	Hop Hing Co	Hotel St	16	do		1	3	3	1
Hong Chee	do	do	do	14	do		1			
Lau Yin	Bookkeeper	do	do	10	do		1			
Lee Yek	do	do	do	9			1			
S. Nardo	Merchant	Wing Wo Chan	do	7	Naturalized		1			
L. Yammou	do	do	do	7	do		1	1	1	
L. Chau	do	do	do	8			1			
Houan	do	do	do	6			1			
Yim Chan	Rice Planter	Asean	do	43	Naturalized	1		10	6	1
Chock Pai	Merchant	Yuen Fat	do	13	do		1			
Chas Ah Son	do	Hop Hong	do	18			1	1	1	
Wong Sing Hee	do	Chau Ah Son	do	14		1		4	4	2
Kim Kee	do	Pang Chong	do	15			1	1		
C. Afat	do	Kim Kee	do	8	Naturalized		1			
Chee Tai Hon	do	Yee Chan	do	18	do		1	2		
Chang Yee	do	do	do	7	do					
		do	do	9	do					
Gom Dow	Merchant	do	King St	15		1		3	3	
Lam Kam Chin	do	do	do	12	Naturalized		1	2		1
L. Suen Chan	do	do	do	21	do		1	5	5	2
Sing Loy	do	do	do	22	do		1	6	3	1
A. Sing Foako	Clerk	W. Asford	King St	27	Nat Born	no	1			
gan Sing	Merchant	do	do	12		1			2	
Ju Yai	do	do	do	20	Naturalized		1	2		
Ching Shai	do	do	do	12	do		1	1		
A. Tai Yew	Clerk	do	do	7			1			
Yung Tsap	Merchant	do	do	12	Nat.		1			
Pau Yee	do	do	do	11			1			
Ching Pan	do	do	do	12	Naturalized		1	1		
Chuck Chee	do	do	King St	10			1	1		
Kang Chai	do	do	do	14			1			
Kuoyee	do	do	do	16						
Jung Yuen	do	do	do	8						
Ng Chan	do	do	do	6						
Yim Lue	do	do	do	22	Nat		1	6	6	
Yung Chee	do	Wing Wo Chan	do	15	do		1	1		
Chu Gem	do	Wing Wo Chan	do	9			1	3	3	2
Cheng Koo	Clerk	do	do	12			1			
C. K. Chow	do	do	do	8						
Chang Chut	do	do	do	10						
C. Yek Nam	do	do	do	3						
Yong Foo	do	do	do	18						
C. Afat	Merchant	Wing Chong	Maunaloa St	10			1			
Lau Shing	do	Wing Chong	Hotel St	14	Naturalized					
Chang Sai	do	Hop Hing Co	do	15	do		1	3	3	
Chung Hong	do	Chung Hong	Pomelo Row	16						
Hoo Pau	Clerk	Hop Hing Co	Hotel St	12						
Lam Saw	do	do	do	8						
Chun Boo	Bookkeeper	do	do	7	Naturalized					
Yong Hing Chow	Merchant	Wing Chong	do	10	do		1			
Lau Yek Cheu	Bookkeeper	do	do	4	do					

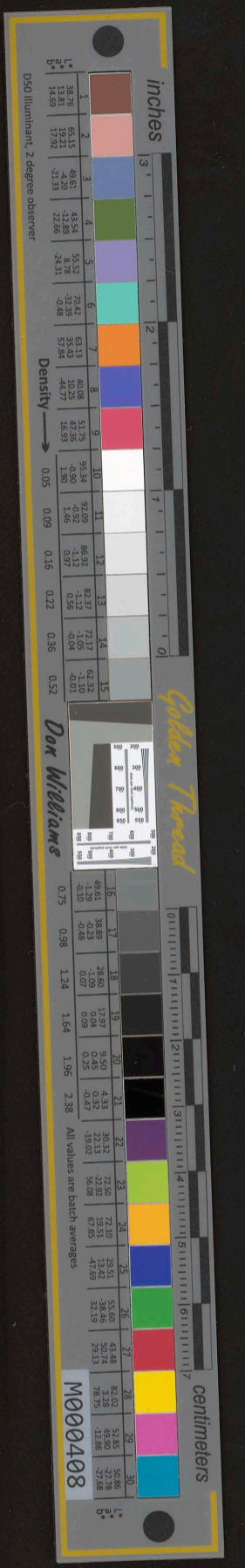


Lau Saw	do	do	do	8					
Chun Boo	Bookkeeper	do	do	7	Naturalized				
Yong Hing Chow	Merchant	Wing Chong Sing Co	do	10	do	1			
Lau Yick Cheu	Bookkeeper	do	do	4	do				
T. Ahnua	Clerk	do	do	7	do				
C. York Chow	Bookkeeper	Wong Hing Sing Co	do	8	do				
Chong Wai	Clerk	do	do		Haw. Born				
Chong Sing	Clerk	do	do	10	Naturalized				
Dang Sang	Merchant	Sau Sing Namann St	16		do	1	1	1	1
Chang On Sing	do	Wong Hing Sing Hotel St	14		do				
Lai Ding	do	Lau Poo Kee	15						
Chou Sun	do	Jai Kee	6						
Lau Hong	do	Lam Hong Kee	10			1			
Sin Sang	do	Sin Sang Kee	20	Naturalized		1	4	3	2
Lau Hing	Clerk	Hap Hing Co	6						
Lo Ah	do	Lau Kee	15			1	5	5	2
Lau Kui	Bookkeeper	Yee Wo Chou Maunabath	4	Naturalized					
Chuck Hoy	Clerk	Hollister & Co King St	16	Naturalized	1		2	2	

Yee Chin	Merchant	Wong Sing Co Hotel St	11	Naturalized		One	Three	3	
Wong M. Chau	Bookkeeper	Yue Kee Co	4	do					
T. Pak Hon	do	Wong Sing Co	3						
Yee Hong	do	do	4						
Chang Kai Sing	Merchant	Do King Tong	8	do					
Chong Do	Bookkeeper	do	4						
W. How Chong	Merchant	Wong Wai on	11	do		One	2	2	
Lai Bat Sai	Bookkeeper	do	11						
Wai Shing	Merchant	Wong Sing Co	14	do		one	5	4	1
Lau Hoi	do	do	16	do					
Jackling	do	Wong Sing Hotel St	8	do					
Leong Hong Sing	do	Wong Sing Tong	19	do					
Goo Fat	Bookkeeper	do	19	do		one	2	2	
Tom Yu	Merchant	See Wai	13			One			
Chee Wa Kan	Merchant	Wong Sing Kee	14						
Wong Yuen Ching	Merchant	Wong Sing Tong	20			one	3	3	2
Yam Nam	do	Tim Wo	10						
S. Lam See	do	Tim Kee	3						
Lee Toma	do	Lee Toma Smith St	14			one	4	4	3
Kam Chin	do	Kam Chin	18				1		
Chun Billie	do	Wong Sing Hotel St	14	do		one	2	2	
Chun Sang	do	Wong Sing Kee Lili St	16	do		one	1	1	
L. Mau Kee	do	Mau Kee	14						
Chang Kau	do	Lau Kee Dinann	15						

Lau Chock	Merchant	Boo Yung Sing Maunabath	five						
Chock Song	do	Chock Song Kee	6						
Lau Tai	do	Lau Tai Kee	26	Naturalized		1	5	5	1
Lau Hong	Clerk	Lau Tai Kee	10			1	4	4	
Leong Yuen	Grocery Store	Yee Wo Tai	9						
Dong On	Merchant	Tong Kee	28			1	5	5	2
Tau Ng Lui	Grocery Store	San King Sing	6						
S. A. K.	do	Mau Sang Co	20			1	4	4	2
Sung Sing Sing	Merchant	Tong Sang Kee	14			1	5	5	3
Ma Moon	do	Tong Kee	12						
Hong Zora	do	Sing Chong South St	28	Naturalized		one	3	3	1
Nong Leong	Rice Planter	Wong Ching Wai	22	do	1		3	3	3
Chung Chuek	Merchant	Wong Sing Co Maunabath	36						
Chow Kook Sun	Worshiper	Wong Sing	10	Naturalized		1	3	3	
How Choy	Merchant	Boo Yung Sing	12	do					
Chong On	Sailor	Loon Joo Wo	18			1	1	1	
H. Amee	Merchant	Yee Chong	33	Naturalized		1	5	5	3
Lai Sing	Butcher	Yee Wo	10	Naturalized		1	3	3	
Lau Suck Ning	Sailor	Kam Chong Kee	12						
Tau Lau	Grocery Store	Wong Sing	9						
Lee Yung	Druggist	Yee Han Sing	12						
Mok Tai Hin	Sailor	Kam Kee	15	Naturalized					
Yung San Pak	Clerk	Wong Sing Kee	13						
Chung Yung	Merchant	Tong Yung Chong	16						

L. Apanda	Rice Planter	Sing Chong Wai	23	Naturalized		1	1	1	1
Hong Same	Police	Maunabath	26	do		1	4	4	
Tai Sang	Sailor	Tai Sang	18			1			
Nee Sang	Rice planter	do	18			1	4	4	

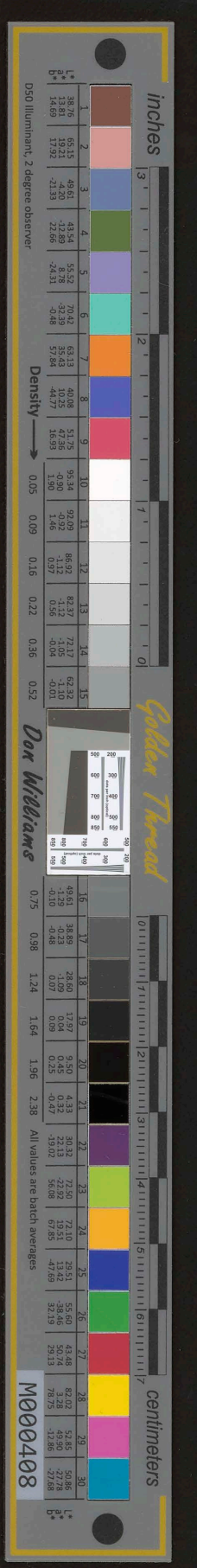


Nee Sang	水生	Taro planter	do	18		1	4	4	
Moy Hap	梅合	dry goods	do	9		1			
Yee Jan		druggist	do	12					
Lam Ho	林豪	Grocery Store	do	4					
Lay She	雷樹	Dry Store	do	10		1			
Young Tai	楊大	Druggist	do	17					
Lam Cheng		do	do	10					
Tong Ahmoi		Merchant	Hotel St	29		1	1	1	1
Lee Sing		Grocery Store	do	14		1	4	4	
Jam Chan	張傑	do	do	11		1	1	1	
Loo Jing	盧定	do	do	14					
Sing Sam Lan	蘇連	do	do	9					
Chung Ying Lau	陳英	do	do	12					
Kau Chung Yiu	高章	do	do	16					
Yodyok		Merchant	do	26	Naturalized	1	8	7	6
Ping Mow	彭茂	do	do	8					
Lom Kin		Grocery Store	do	20		1	3	3	2
Yip Mow Kee	葉茂記	Tailor	do	20		1	3	3	
Mok Cho Ying	麥祖英	Doctor	do	7					
Lau Hing	林興記	Merchant	do	16					
Chung Hing	張度	Merchant	do	9		1	2	2	

Seang Kook	梁國	Merchant	Yee Chun	do	8	Naturalized			
Chung Ah Hap	鄭亞合	do	do	do	5				
Chang Ching	張棟	do	do	do	5				
Mark Yee Yuen	麥儀遠	do	do	do	5				
Lau Yin	劉偉	do	Wing Ho	do	19		1	5	5
Loo Hee Kim	盧熙倫	do	do	do	19	Naturalized	1	3	3
Choo Bing	徐明	do	Sung Tai	do	15		1	2	2
Choo S.	卓馬先	do	Hofatong	do	7				
Kanau	甘香	do	Sing wong	do	19	Naturalized			
Chang Quoi	鄭桂	do	C. Afat	do	14	do	1	1	1
Jong Mook	容木	do	Tong Sang	do	10		1		
Lam Bor	林室	do	Yait Sang	do	13		1	5	5
L. Lan	梁倫	do	Wo On	do	12				
Yee Chong	怡昌	do	Yee Chong	do	8				
Lou Tong Kai	劉棠皆	do	Man Chan	do	14		1		
Look yan	陸光	do	Look yan	do	11		1	3	3
Chang Chue	鄭熾	do	Chang Chue	do	11		1	2	2
Tong Ping	唐炳	do	Tong Ping	do	12		1	2	2
Ng Chan	伍珍	do	Tong Chan	do	10	Naturalized			
W. A. Jing	屈敬	do	Yee Sing	do	11				
W. Yin	王遠	do	Yee Sing	do		Hawaiian born			
D. Alai	譚元	do	Jai Wolan	do	26	Naturalized	1	1	
Ho Yen Kee	何元記	do	do	do			1	3	3
Chook Kong	卓光	do	Chook Kong	do	10		1	2	1
Wing Ming	黃廣	do	do	do	19		1		

W. Ahiv		Rice Planter	Chin Ho	Beritania St	22	Naturalized	1	5	5	3
Chue Luen		Merchant	do	do	15	do	1	1	1	
W. Se Lee		do	do	do	26		1	8	8	2
Foo Yee Bui		Surgeon	do	do	17		1	4	4	2
Yee Chan		Incant Officer	do	do	30		1	13	13	6
Kin Tong		Sailor	do	do	18	Hawaiian born	1			
Ping Yung Man		Merchant	do	do	14		1	10	7	5
Shun Lok Kee		do	Shun Lok Kee	do	15		1	3	3	2
Chew Han Kee		Merchant	Chau Han Kee	do	15	Naturalized	1	2	2	
Fook Kee		do	Fook Kee	do	12		1	2	2	
Ho Bai Kee		do	Ho Bai Kee	Emma St	14		1	2	2	
Y. See Young		Sakeman	J. H. Davis	Emma St	14		1	1	1	
Wong Nam		Merchant	Sum Mung	Beritania St	14		1	1	1	
Choy Sing		do	Sung Sing	do	14		1	4	4	
Lau Kam See		do	Hung See	do	15		1			
Leung Tong		do	do	do	10	Naturalized				
W. Ahiv		Merchant	do	do	14		1	2	2	
Sun Ki Ying		Merchant	Hung Shun	Beritania	30	do one		two	two	one
Sau Sang		do	do	do	16	do	1	1	1	
Chang Kan		Clerk	Hung Shun	do	15	one		two	two	
Jor Chung		do	do	King St	24	Naturalized	do	5	5	1
Ah Nu		Clerk	Tong on	Muram St	8		1			
Mar Chum Sing		Merchant	Lungom	Hotel St	10		1			
Ng Sang		do	do	do						

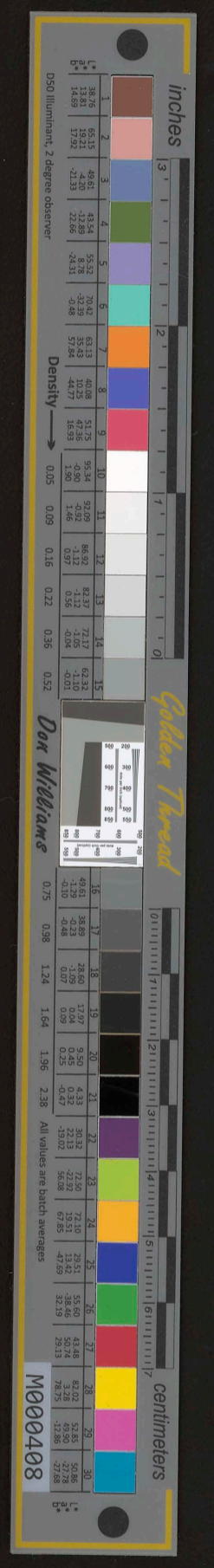
Man Hing	萬寬	Merchant	Sung On	Muram	10				
Young Hin	楊廣記	do	do	Muram	5				
Ch. Ping	才彬	do	Ch. Ping Co	do	8		1	1	1



Man Hung	萬寬	Merchant	Sung On	Maunani	10				
Young Kun	楊寬記	do	do	Maunani	5				
Ch. Ping	才彬	do	Ch. Ling Co.	do	8	1	1	1	
Man Kai	文敬	do	Ahi	Maunani	10				
Shung	歐洪	do	At Hung	do	18	1	4	4	2
Sun Quen	新元	do	On Tai	do	5				
Young Sing	容星	do	Sting Kee	do	5				
Yong Hong	楊講	do	do	do	12				
Chong Lung	昌隆	do	do	do	11				
Lee Hui	李瑞	do	Sui Ootai	do	9	1	1		1
Hoop Kee	合記	do	Hoop Kee	do	5				
Tong Hung	唐寬	do	Yongwai Kee	do	20				
Sam Yee	三瑜	do	Sung Yee	Maunani	12	1	1	1	
Moakshoon	莫松	do	Wong Kwai	do	10	1			
Akin a	周添	do	Sung Choy	Punchow St.	29	1	2	2	1
W. S. W. Kama	黃春	Planter	King St.	40	do	1	2	2	1
Jee Sao	周秀	clerk	do	do	9				
Ho Young		clerk	Yickong	Hotel St	22	1			1
Y. Anoy		"	L. B. Kerr	King St.	18	1	4	4	1
Y. K. Ho		clerk	Booker	Maunani St.	15	1			
Gao Goon Ho		do	do	do	11				
Yim Dak Chin	嚴達泉	Merchant	Sung Yee	Hotel St	16	1	2	2	
Loi Young		do	Wing	Hotel St	28	1			

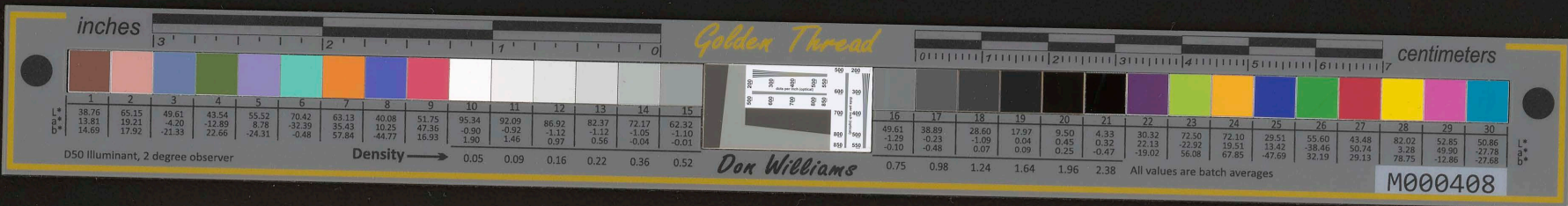
Wong Chong		Clerk	Yee Mo Khan	Maunani	9	1	1	1	
Sho Hong Kee	古通記	Grocery Store	Loo Song Kee	Queen St	5				
Wong Hong Saw	王光保	Coffee Shop	Tong Chan Kee	do	12				
Chin Kee		do	Siu Kee	do	16	1	3	3	
Ch. Ping	勝記	Grocery Store	J. Ah Kin	do	6				
Sung Kee		do	Sung Kee	do	10	1	3	3	2
Kee Fook		do	Kee Fook	do	11				
Sam Yee		do	Sun Yee	do	6				
Ah. Pin	曾球	do	ah Pin	do	9				
Chau Kow		do	Choy Yung Kee	Queen St	22				
Chu Dow		Bookery Store	Siu Dow Kee	do	25				
Tong Mow		Clerk	Sung Chong Kee	Maunani St	14	1	4	4	
Wing Sing Chan		Merchant	Wing Sing Chan	Maunani St.	13	1	1	1	
Ch. Sin	醫生	do	do	do	18	1			
Wong Chow	王就	Clerk	do	do	9				
Tom Chong	譚本公	Merchant	Tom Chong Kee	do	14	1	1	1	
Lee Long		do	Yim Yee Kee	Koolau	9	1			
Chong Hoo		Salesman	Hoop Hung Kee	Hotel St.	6				
Chun Yim Yee	陳儀	Merchant	Hung Yee Kee	King St.	13	1	3	1	
Ng Man Sun	何明華	do	do	do	9	1	2		
Tong Juck Sam	方植三	do	Zuong Sam Kee	King St.	10	1	3	1	
Chun Yee	陳樂	Salesman	Yee Mo Chan	Maunani St.	10	1	1		
Wong Hoy Kin	黃開勤	Merchant	Boo Yung Kee	do	10	1	2		
Ng Kai	伍佳煥	do	do	do	15	1	1		
Hoi Hoan		do	Siu Wo	Hotel St.	10	1	1		

Ch. Yat		Watchmaker	do	King St.	14				
Hoy Kin		Merchant	do	Koolau	15				
Kana		do	do	Kahuku	20	1	1	1	
Auconchung		Clerk	do	do	7				
Loon Kee		Merchant	do	King St.	4				
Phung Nin		Clerk	do	do	11	1			
L. Ah Leong		Merchant	do	Queen St.	14	1	5	5	2
W. Hoopay		Clerk	H. C. News Co.	Maunani St.	7	do			
L. Ah Lo		Rice Planter	do	do	31	do	1	1	2
Lam J. Chin		Clerk	J. S. Walker	School St.	15	1			1
Ching Jee Tong		Teacher	do	King St.	4				
Hoi Jackson		Clerk	do	do	6				
Yon Gook		Merchant	do	Maunani St.	9				
Lai Men On		do	do	do	11				
Ho Lung		do	Sung Mo Kee	do	19	1			
C. Y. Ah		Clerk	do	do	12	1			1
Tai Ling		do	do	King St.	8				
C. Thomas. Ai		do	do	do	1	1	1		6
Ah Wah		Clerk	do	Hotel St.	13	1	1		
Chong Yee Sun		do	do	King St.	11				
Ah Lam		do	do	do	11	1			
Chock See		do	do	Maunani St.	20	1	2	2	1



姓	名	Profession	Address	Age	Notes	1	2	3	4
Lee Hoon	禮煥	do	Sin Ho	10					
Ho Yat		Watchmaker	King St.	14					
Hoos Kin		Merchant	Koolau	16					
Kana		do	Kahuku	20		1	1	1	
Auconchung		Clerk		7					
Lee Kim Lin		Merchant	King St.	4					
Wung Hin		Clerk	do	11	naturalized	1			
L. Ah Leong		Merchant	Queen St.	14	do	1	5	5	2
N. Lauqay		Clerk	H. C. News Co, Queen St.	7	do				
L. Ah Lo		Rice Planter	do	31	do		1	2	1
Lam J. Chin		Clerk	J. S. Walker, School St.	15		1			
Leung Jui Sing		Teacher	King St.	4					
Lee Jackson		Clerk	do	6					
Yon Yook		Merchant	Kuanan St.	9					
Lai Men On		do	do	11					
Ho Lung		do	Sing Ho St.	19	naturalized	1			
C. Y. Aki		Clerk	do	12		1			1
Tai Ling		do	King St.	8					
C. Thomas. Ai		do	do	1	1	1			6
Ah Wah		Clerk	Hotel St.	8	1				
Chong Yee Sun		do	King St.	11					
Ah Lam		do	do	11		1			
Chock See		do	Queen St.	20		1	2	2	1
Yee Yee		do	See Mo Kee Hotel St.	9					
Chun Kum Quai	陳德鈞	Merchant	Chun Kuan, Morrison St.	18		1	3	3	1
Ho Sai Hoon	何世榮	do	Hotel St.	9		1	2		
Kwong Yau	唐耀	Merchant	Thong Sing, Queen St.	12	Naturalized	yes	6	6	3
Ching Chih	程捷	do	Yun Kee Hotel St.	16	do	yes			
Man Hung	萬煥	do	Sun On Kee King St.	10		yes			
Kee Cho	許初	do	Yuen Kee Hotel St.	10	naturalized	do			
Tai Yip	鄧保	do	do do do	24	do	do	4	4	1
Dug Baw	卓賢	Carpenter	Kaula	16	do	do	1	1	
Chock Yim		Hack Driver	King St.	19	do	do	5	5	1
Loo Sin		Storekeeper	Wing On, King St.	11		do			
Young Tuck		do	King's Road, do	8		yes	1	1	
Loo Chih Lam		Merchant	King St.	15	Naturalized	yes			





To the HONORABLE SANFORD B. DOLE,
President of the Constitutional Convention of the
Hawaiian Islands.

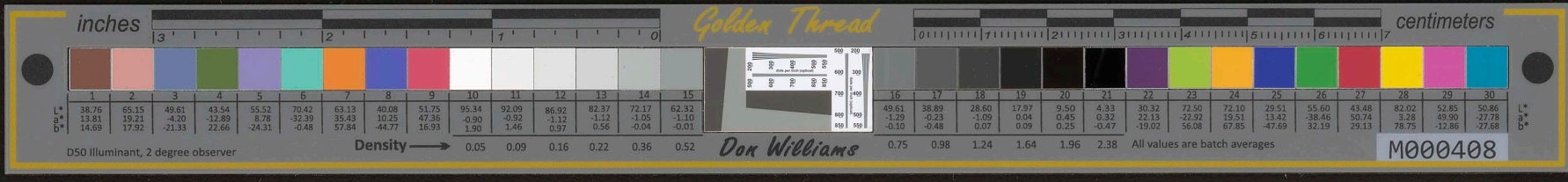
Sir:-

We venture most humbly and respectfully to again address to you and the Honorable Convention a further appeal for the consideration of those to whom the framing of the constitution which will materially ensure the progress and destiny of this country has been entrusted. We have relied and still rely upon the sense of Justice and dictates of Equity of the Convention.

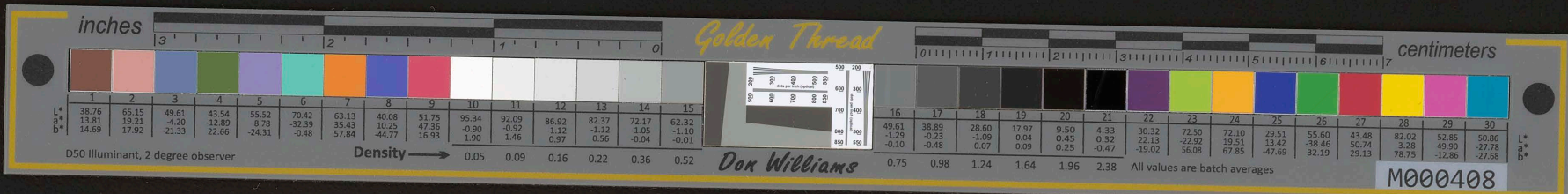
We appreciate most throughly the theoretical concessions granted to us by the able report of the Attorney General and his colleagues of the Committee on Legislature and we are pleased that we have received such recognition as that report has accorded. But from practical relief or assistance we are debarred by the provisions of the Constitution, and apparently by the amendment adopted to Paragraph 5 of article 18, such privileges as we have hitherto enjoyed may be hereafter held to have been curtailed. On the one hand we are offered the privileges of naturalization, denization and the franchise if we can qualify, and on the other the possibility of qualification is so surrounded by limitations as to be almost precluded.

The fact that we have, hitherto, had no treaty with this country debars us but admits to the privileges, referred to all other aliens having, or having had, treaty relations. Would it not be just and equitable to eliminate this paragraph so as to enable such of us who are competent to qualify

START



Faint, illegible text on aged paper, possibly bleed-through from the reverse side. The text is arranged in several horizontal lines across the page.



under the other stringent precautions, conditions and requirements of the Constitution to be placed on the same footing, a limited extent, as other aliens; or if this is not deemed wise or practicable may the paragraph be amended so as to include countries " which may have " (treaties)

In view of the probable annexation of these Islands to the United States at an early date, this concession would be one, practically amounting to simple courtesy to a very influential section of the community.

Under the Constitution as framed on first reading Chinese residents and citizens of very many years residence and whose interests are mainly identified with this country, of high commercial, financial and social standing are practically debarred from exercising privileges granted to all others, and yet there are a limited number perfectly qualified to accept the most stringent tests of qualification for citizenship denizenship and the electoral franchise if not actually prevented from so doing.

Hitherto we have refrained from referring to other nationalities who have come here originally as laborers and have been granted privileges not accorded to us, but the granting to them of such privileges and debarring us leads us to the firm and respectful hope that the Convention will so far recognize our attempts to benefit and prosper this country as to grant our humble prayers.

With a few exceptions the privilege of the franchise has not been exercised by Chinese Naturalized Subjects or Citizens of Hawaii, although some 750 have been naturalized upon indentially the same terms as to the oath of allegiance



[Faint, illegible text on aged paper, possibly bleed-through from the reverse side.]



3

as the aliens of all other nations. By the proposed constitution may it not be said that these naturalizations are annulled and such privileges as were granted to them have been taken from them.

In this special regard this appears somewhat unjust to many of the signatories of the petition who have resided in this country from 43 years to decreasing periods, the least of which would entitle the holder to citizenship in almost any other country, subject to the necessary compliance with legal requirements.

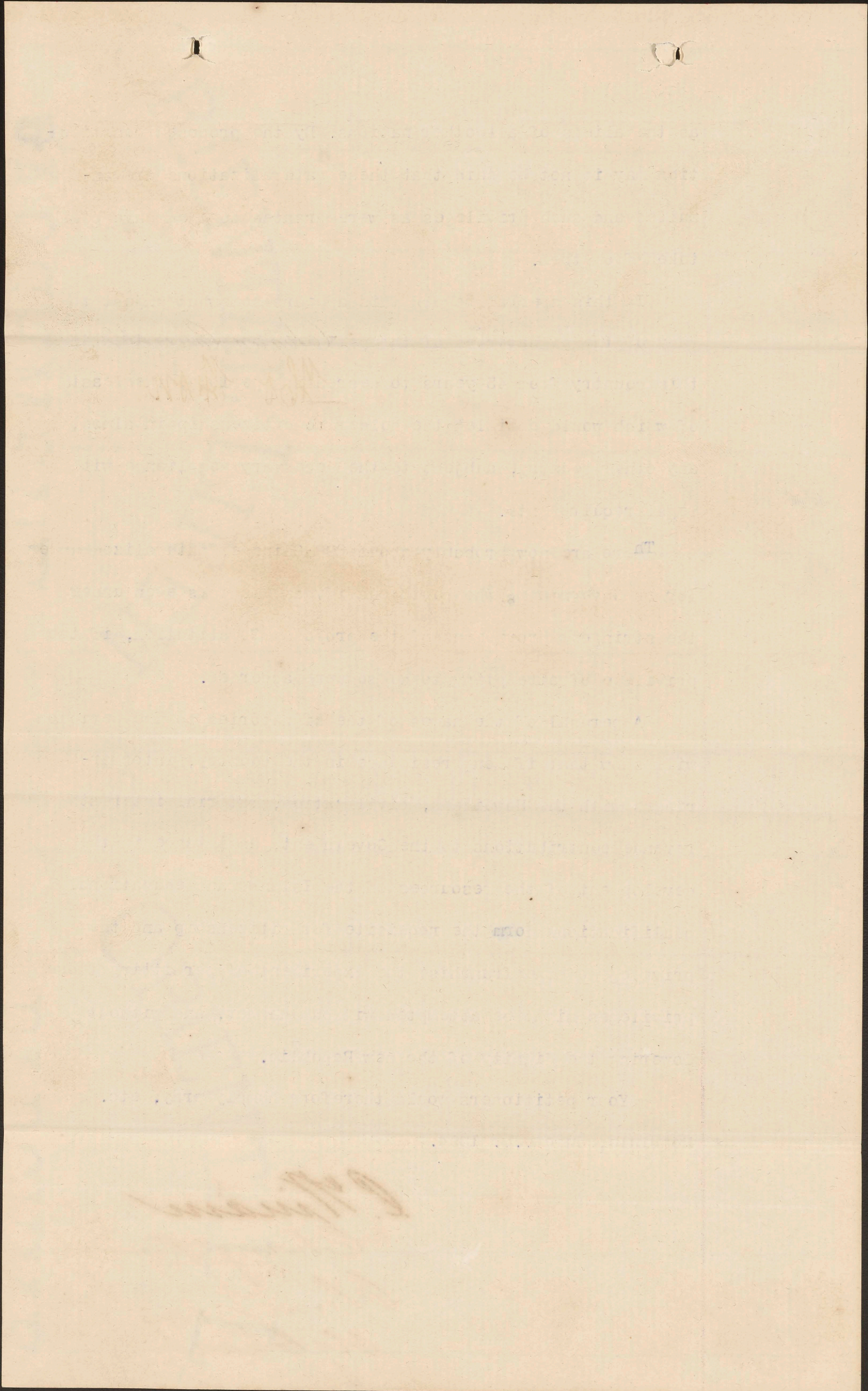
There are now probably about 200 Chinese, naturalized under former Governments, who could qualify as electors even under the stringent provisions of the proposed Constitution, if the privilege of attempting to do so were accorded.

A perusal of the names of the signatories to the petition will show that if long residence in the country, intermarriages with the Hawaiians, civilization, material interests revenue contributions to the Government, assistance in the development of the resources of the Islands and educational qualifications form the requisite for citizenship and the privilege of the franchise the experiment of permitting those privileges might be attempted without danger, and without lowering the dignity of the new Republic.

Your petitioners would therefore humbly pray, etc.

Honolulu, June 23rd 1894.

C. Williams
Chang Kim
Chun King
Ng Chan





Lau Chong
C. Apat
~~Lau Chong~~
Chang Chuck
M. M. M.
Wong Chow
Lau Chuck
Yim Quon
Yang Chee

Golden Thread

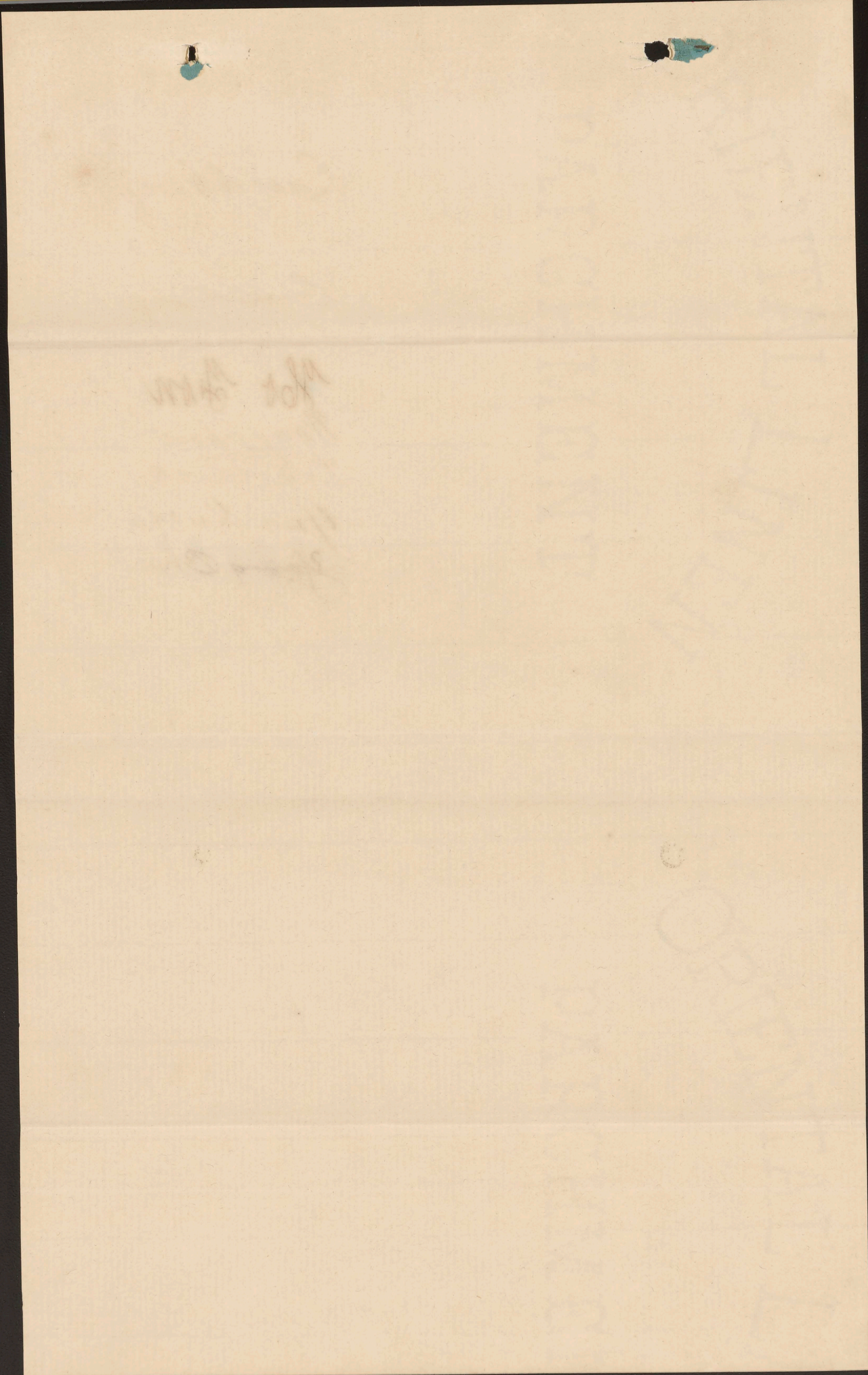
inches 3 2 1 0 centimeters 0 1 2 3 4 5 6 7

Don Williams

M000408

D50 Illuminant, 2 degree observer

1	2	3	4	5	6	7	8	9	10	11	12	13	14	15	16	17	18	19	20	21	22	23	24	25	26	27	28	29	30		
38.76	65.15	49.61	43.54	55.52	70.42	63.13	40.08	51.75	95.34	92.09	86.92	82.37	72.17	62.32	49.61	38.89	28.60	17.97	9.50	4.33	30.32	72.50	72.10	29.51	55.60	43.48	82.02	52.85	50.86		
13.81	19.21	-4.20	-12.89	8.78	-32.39	35.43	10.25	47.36	-0.90	-0.92	-1.12	-1.12	-1.05	-1.10	-1.29	-0.23	-1.09	0.04	0.45	0.32	22.13	-22.92	19.51	13.42	-38.46	50.74	3.28	49.90	-27.78		
14.59	17.92	-21.33	22.66	-24.31	-0.48	57.84	-44.77	16.93	1.90	1.46	0.97	0.56	-0.04	-0.01	-0.10	-0.48	0.07	0.09	0.25	-0.47	-19.02	56.08	67.85	-47.69	32.19	29.13	78.75	-12.86	-27.69		
Density → 0.05 0.09 0.16 0.22 0.36 0.52															0.75	0.98	1.24	1.64	1.96	2.38	All values are batch averages										



Golden Thread

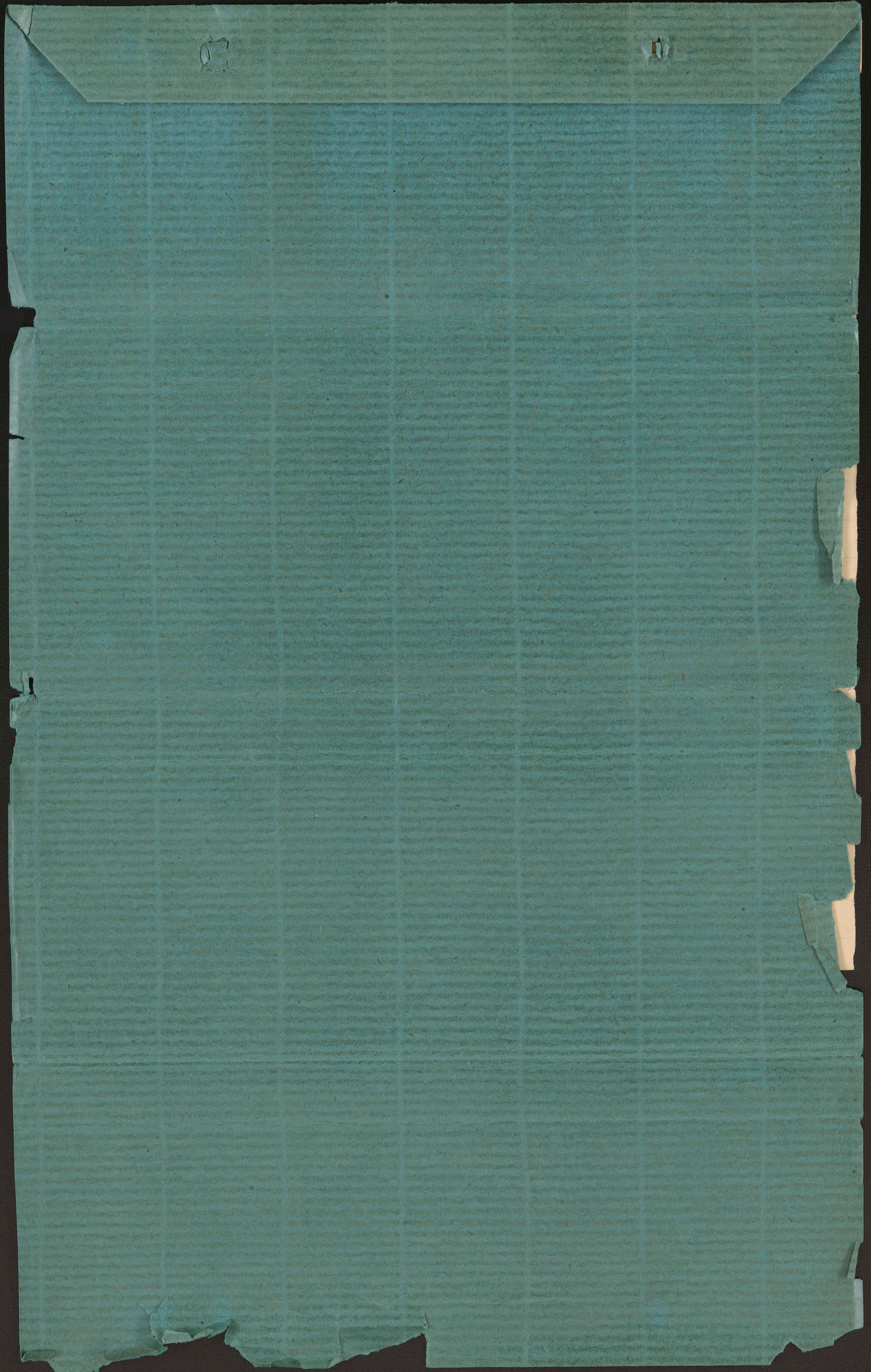
inches 3 2 1 0 centimeters 0 1 2 3 4 5 6 7

1	2	3	4	5	6	7	8	9	10	11	12	13	14	15	16	17	18	19	20	21	22	23	24	25	26	27	28	29	30
38.76	55.15	49.61	43.54	55.52	70.42	63.13	40.08	51.75	95.34	92.09	86.92	82.37	72.17	62.32	49.61	38.89	28.60	17.57	9.50	4.33	30.32	72.50	72.10	29.51	55.80	43.48	82.02	52.85	50.86
13.81	15.21	-2.20	-12.89	8.78	-2.23	35.43	10.35	47.35	-0.90	-0.92	-1.12	-1.12	-1.05	-1.10	1.23	-0.23	-1.09	0.04	0.45	0.32	22.13	-22.52	19.51	13.42	38.46	50.74	3.28	69.90	17.78
14.69	17.52	-21.33	22.66	-24.31	-0.48	57.84	-44.77	16.93	1.90	1.46	0.97	0.56	-0.04	-0.01	-0.10	-0.48	0.07	0.09	0.25	-0.47	-33.02	56.08	67.85	47.69	32.19	29.13	78.75	-12.86	-27.88
Density → 0.05 0.09 0.16 0.22 0.36 0.52															0.75 0.98 1.24 1.64 1.96 2.38					All values are batch averages									

D50 Illuminant, 2 degree observer

Dox Williams

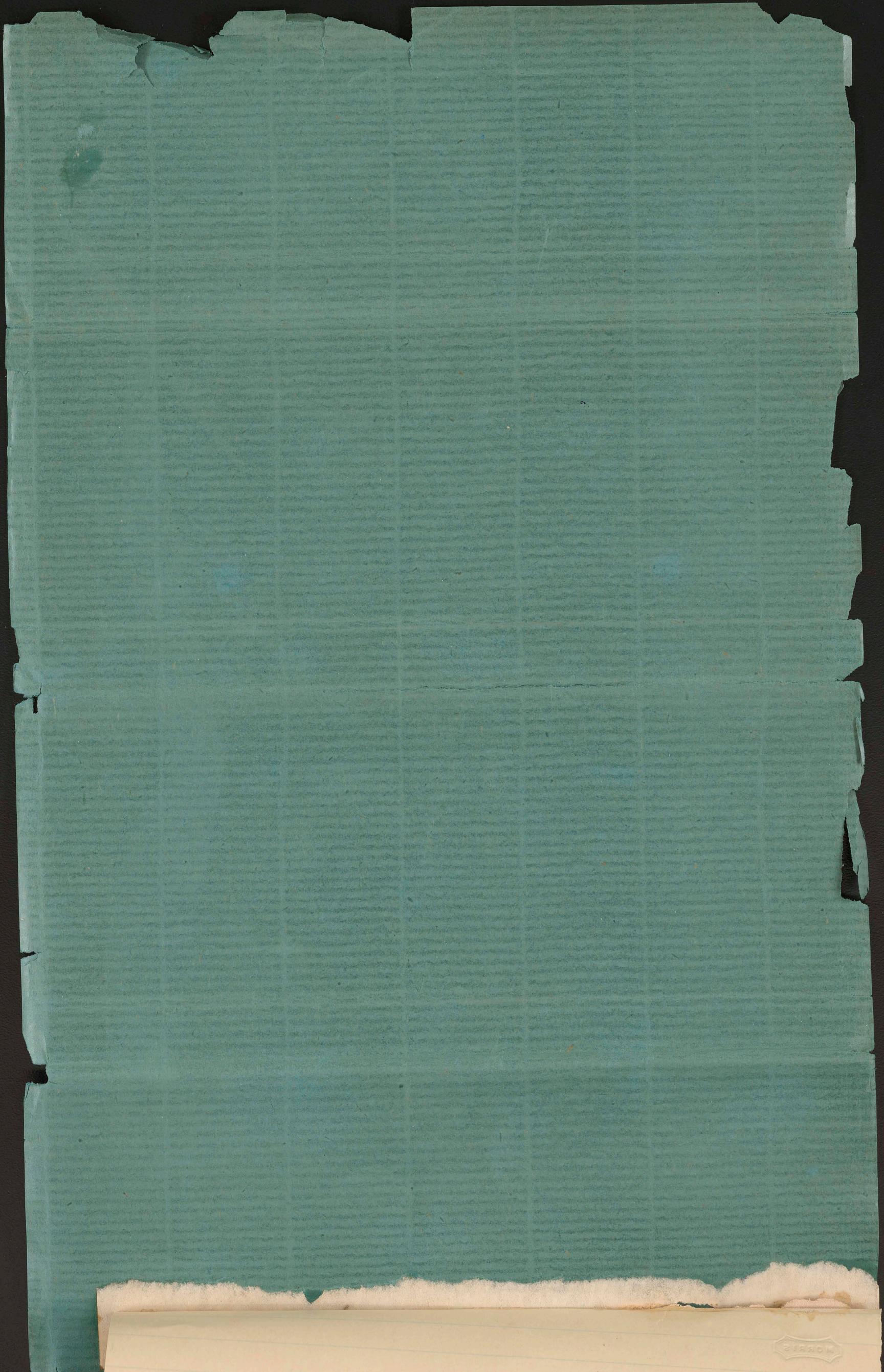
M000408



inches Golden Thread centimeters

1	2	3	4	5	6	7	8	9	10	11	12	13	14	15	16	17	18	19	20	21	22	23	24	25	26	27	28	29	30
38.16	65.15	49.61	43.54	55.52	70.42	63.13	40.08	51.75	55.34	92.09	86.92	82.37	72.17	62.32	49.61	38.89	28.60	17.97	9.50	4.33	30.32	72.50	72.10	29.51	55.60	43.48	82.02	52.85	50.86
13.81	19.21	-4.20	-12.89	8.78	-32.39	35.43	10.25	47.36	-0.90	-0.92	-1.12	-1.12	-1.05	-1.10	1.25	-0.23	1.09	0.04	0.45	0.32	22.13	22.82	13.51	13.42	-38.46	50.74	3.28	49.90	27.78
14.69	17.92	-21.33	22.66	-24.31	-0.48	57.84	-44.77	16.33	1.90	1.46	0.37	0.56	0.04	-0.03	-0.10	-0.48	0.07	0.09	0.25	-0.47	-19.02	56.08	67.85	-47.69	32.19	29.13	78.75	-12.86	27.68
Density → 0.05 0.09 0.16 0.22 0.36 0.52															0.75 0.98 1.24 1.64 1.96 2.38					All values are batch averages									

DS0 Illuminant, 2 degree observer M000408



Golden Thread

inches 3 2 1 0

centimeters 0 1 2 3 4 5 6 7

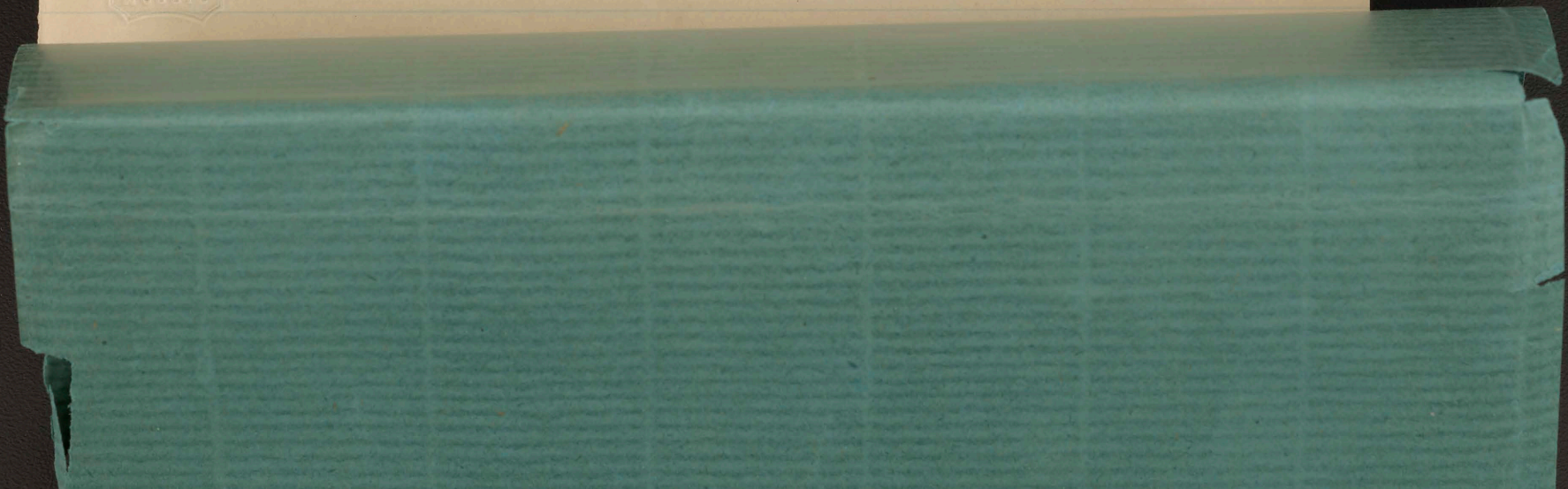
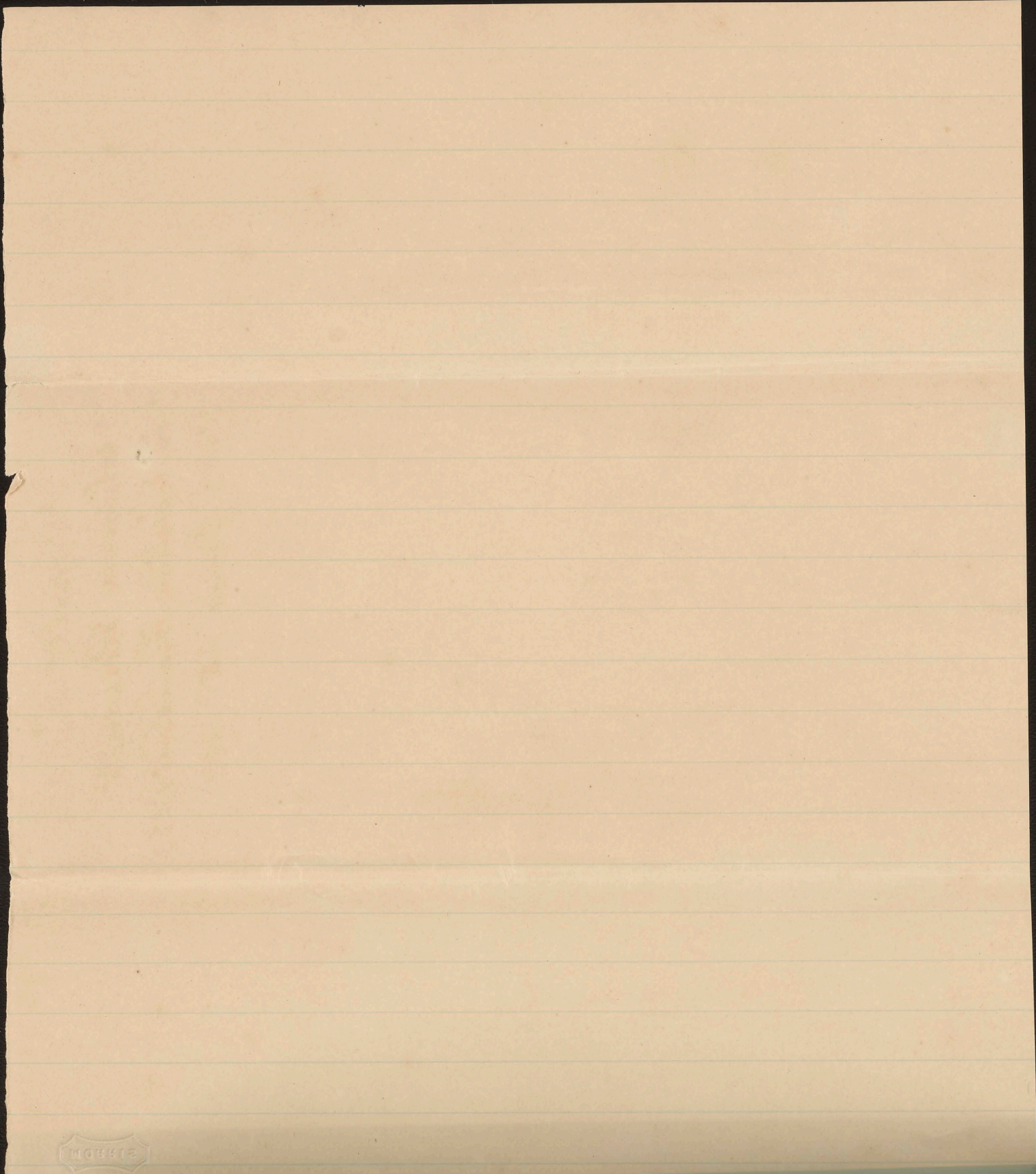
1	2	3	4	5	6	7	8	9	10	11	12	13	14	15	16	17	18	19	20	21	22	23	24	25	26	27	28	29	30
38.76	65.15	49.61	43.54	55.52	70.42	63.13	40.08	51.75	95.34	92.09	86.92	82.37	72.17	62.32	49.61	38.89	28.60	17.97	9.50	4.33	30.32	72.50	72.10	29.51	55.60	43.48	82.02	52.85	50.86
13.81	19.21	-4.20	-12.89	8.78	-32.39	35.43	10.25	47.36	-0.90	-0.92	-1.12	-1.12	-1.05	-1.10	1.22	-0.23	-1.09	0.04	0.45	0.32	22.13	-22.92	19.51	13.42	-38.46	50.74	3.28	45.90	-27.75
14.69	17.92	-21.33	22.66	-24.31	-0.48	57.84	-44.77	16.93	1.90	1.46	0.97	0.56	-0.04	-0.01	-0.10	-0.48	0.07	0.09	0.25	-0.47	-19.02	56.08	67.85	-47.69	32.19	78.75	-12.86	-27.68	
Density → 0.05 0.09 0.16 0.22 0.36 0.52															0.75 0.98 1.24 1.64 1.96 2.38														

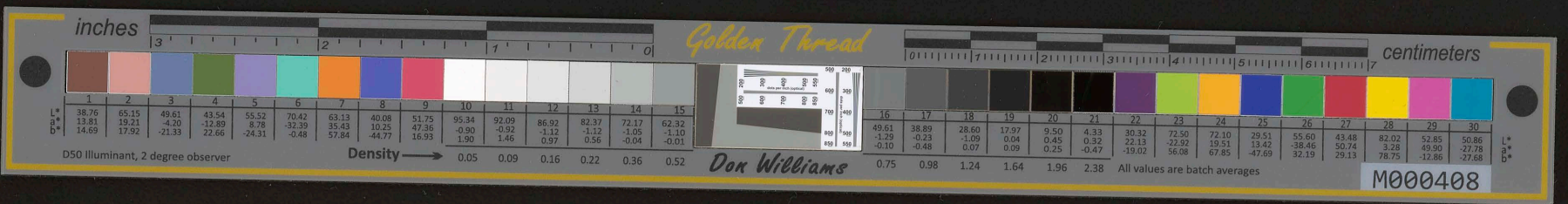
D50 Illuminant, 2 degree observer

Don Williams

All values are batch averages

M000408





MORRIS

Report Peterson
Chinese Residents
on Electric Franchise (2^o)
Part. June 25^o. 1874

END