

GEOGRAPHIC AREA STATISTICS 2007

Income, Employment, Education, and Housing Characteristics of Public Use Microdata Areas (PUMAs) in Hawaii: 2005 to 2007

March 2009

Research and Economic Analysis Division

DBEDT

THE DEPARTMENT OF BUSINESS, ECONOMIC DEVELOPMENT & TOURISM

S T A T E O F H A W A I I

Table of Contents

Introduction	2
A. Income and poverty	3
Table A-1. Household income: 2005 to 2007	7
Table A-2. Family income: 2005 to 2007	9
Table A-3. Household income distribution: 2005 to 2007	11
Table A-4. Percentage of families with income in the past 12 months below the poverty level: 2005 to 2007	12
Table A-5. Percentage of people whose income in the past 12 months below the poverty level: 2005 to 2007	13
Figure A-1. Median household income: 2005 to 2007	4
Figure A-2. Per capita income: 2005 to 2007	4
Figure A-3. Household income distribution: 2005 to 2007	5
Figure A-4. Gini coefficient and Kuznets ratio: 2005 to 2007	6
B. Employment	14
Table B-1. Employment status: 2005 to 2007	15
Table B-2. Employment by occupation: 2005 to 2007	16
Table B-3. Employment by industry: 2005 to 2007	17
Table B-4. Class of worker: 2005 to 2007	19
C. Education	20
Table C-1. School enrollment by type of school by grade level: 2005 to 2007	21
Table C-2. Education attainment by employment status for the population 25 to 64 years: 2005 to 2007	24
Table C-3. Characteristics of public school student: 2005 to 2007	26
Table C-4. Percent of 10 th graders with Terra Nova Test at average or above: 2005 to 2007	27
Figure C-1. Share of students enrolled in public school: 2005 to 2007	20
D. Housing and Vehicles	28
Table D-1. Housing characteristics: 2005 to 2007 (% of total housing units)	29
Table D-2. Housing occupancy: 2005 to 2007	34
Table D-3. Selected monthly owner costs for the housing units with a mortgage: 2005 to 2007	35
Table D-4. Monthly gross rent: 2005 to 2007	37

Introduction

This report presents selected economic, social, and housing characteristics of geographical areas in Hawaii known as Public Use Microdata Areas (PUMAs). For comparison purposes, data for the state of Hawaii and the U.S. as a whole are also presented. Data in this report are mainly from the American Community Survey (ACS) conducted by the U.S. Census Bureau and can be found at the Census Bureau's website at <http://www.census.gov/acs/www/>. As defined by the Census Bureau, there are nine Public Use Microdata Areas (PUMAs) in Hawaii. The following is a list of the PUMAs and their geographical descriptions.

PUMAs	Area	Detail description of area
100	Maui County, Kalawao County and Kauai County	Maui County, Kalawao County and Kauai County
200	Hawaii County	Hawaii County
301	Rural Oahu	Waianae, Wahiawa, North Shore and Koolauloa.
302	Koolaupoko	Kahaluu, Kaneohe, Kailua, Waimanalo and Mokapu
303	Makapuu-Manoa Stream	Hawaii Kai, Kuliouou-Kalani Iki, Waialae-Kahala, Kaimuki, Diamond Head/Kapahulu/St Louis Heights and Palolo
304	Manoa-Waikiki-Kakaako-Tantalus	Manoa, McCully, Moiliili, Waikiki, Makiki, Lower Punchbowl, Tantalus, Ala Moana and Kakaako
305	Pauoa-Downtown-Kalihi	Nuuanu, Punchbowl, Downtown, Liliha, Kapalama, Kalihi, Palama and Kalihi Valley
306	Moanalua-Airport-Pearl City	Moanalua, Aliamanu, Salt Lake, Foster Village, Airport, Aiea, Waimalu and Pacific Palisades
307	Mililani-Waipahu-Ewa	Waiawa, Waipahu, Ewa, Mililani, Waipio, Melemanu, Makakilo, Kapolei, Honokai Hale, Mililani Mauka and Launani Valley

The Island of Oahu is composed of seven PUMAs (PUMA 301 through PUMA 307). Maui, Kalawao and Kauai Counties are combined into one PUMA area (PUMA 100), because geographic areas have to meet a threshold population of 100,000 or more. Since the ACS data were available only for areas with population of 250,000 or more prior to 2005, this report covers years from 2005 to 2007. It should be noted that there is a difference between ACS data in 2005 and later years, in that group-quarters populations, such as those in military barracks, college dormitories, and nursing homes, were included in 2006 and 2007 ACS, but not in 2005 ACS data.

A. Income and Poverty

Three indicators are often used to describe the income level of the population; household income, family income, and per capita income. A household consists of all persons occupying a housing unit. Specifically, a household includes related family members and all other unrelated persons, if any, such as lodgers, foster children, wards, or students who share the housing unit. A household also includes persons living alone in a housing unit or two or more unrelated persons sharing a housing unit. A “family” is a subset of households that includes two or more persons related by birth, marriage, or adoption and residing together. All such persons are considered members of one family.

The sum of income of all the persons in a household is “household income.” Likewise, the sum of income of all family members is “family income.” For analysis of income distribution, household income is often used because it is considered the basic spending unit. However, due to different sizes of households, the income of one household may not be comparable with another. For example, a household with 2 persons and \$100,000 household income is wealthier than another household of 10 persons with the same amount of household income. Per capita income (total income divided by the number of persons), may be a better measure for comparing income levels between areas. “Median income” refers to the income of the household, family or person exactly in the middle of the entire income range. That is, there are an equal number of households, families or persons making more and less. This differs from “average” income, which is simply total income divided by the number of households, families or persons. The *median* measure tends to be less affected than the *average* measure by unusually large numbers of high or low income earners in the population.

Median household incomes in most of the PUMAs in Hawaii were higher than the U.S. median household income from 2005 through 2007 (Table A-1). Household income in Manoa-Waikiki-Kakaako-Tantalus (PUMA 304) was lower than the U.S. median household income between 2005 and 2007. The lower household income in this area may be due to the large proportion of one-person households in the area. Householders living alone in the U.S. accounted for 27.3 percent of the total U.S. households in 2006 and 2007¹. On the other hand, those living alone in PUMA 304 accounted for 47.2 percent in 2006 and 49.0 percent in 2007 of the area’s total households¹. Data for this particular group for 2005 showed similar results (27.1% for the U.S. and 43.6% for PUMA 304¹). In terms of per capita income, this area has the second highest per capita income in 2006 and 2007 among the PUMAs in Hawaii (Table A-2).

Median household income in Hawaii in 2007 was \$63,746, 25.6% higher than the U.S. level. Among PUMAs in Hawaii, Mililani-Waipahu-Ewa (PUMA 307) had the highest median household income at \$81,658 in 2007, 28.1% higher than the state level. Makapuu-Manoa stream (PUMA 303) had the highest and Koolaupoko (PUMA 302) had the second highest median household income in 2006 and 2005 (Table A-1).

¹ Source: U.S. Census Bureau, American Community Survey (annual), Detailed Tables
<http://factfinder.census.gov/servlet/DatasetMainPageServlet?_program=ACS&_submenuId=&_lang=en&_ts=> calculations by the Hawaii State Department of Business, Economic Development & Tourism.

Figure A-1. Median Household Income: 2005 to 2007

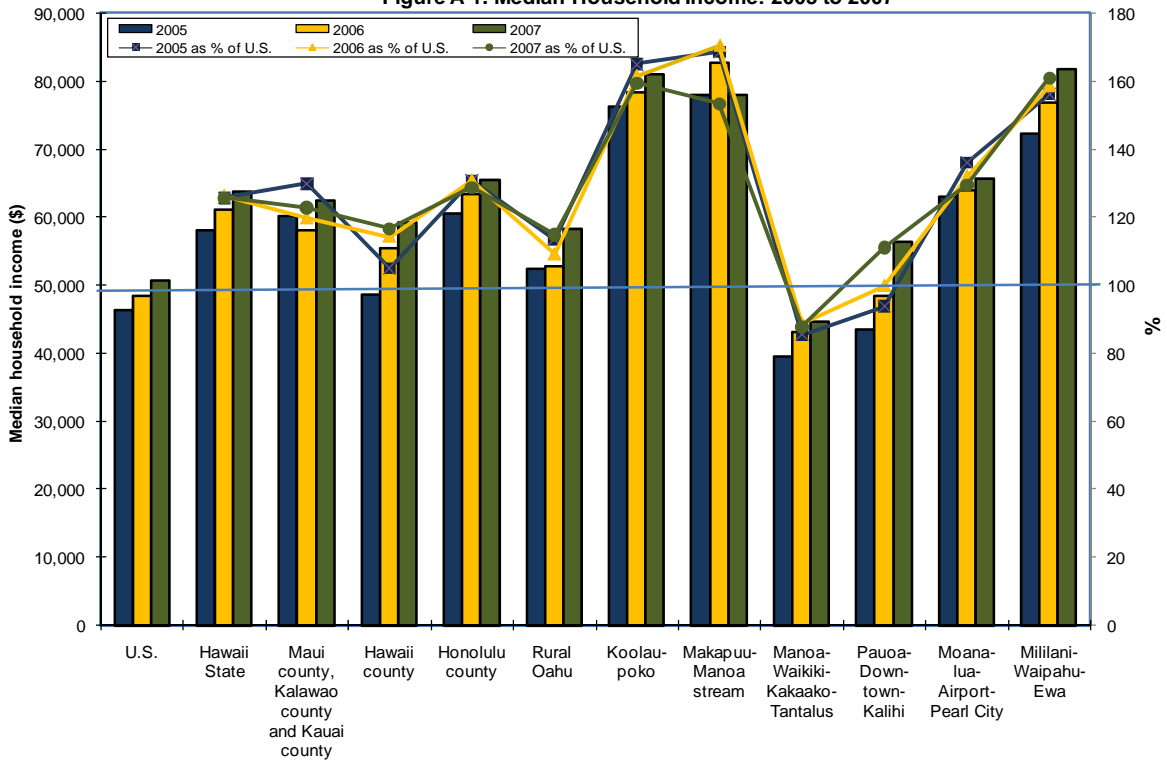


Figure A-2. Per Capita Income: 2005 to 2007

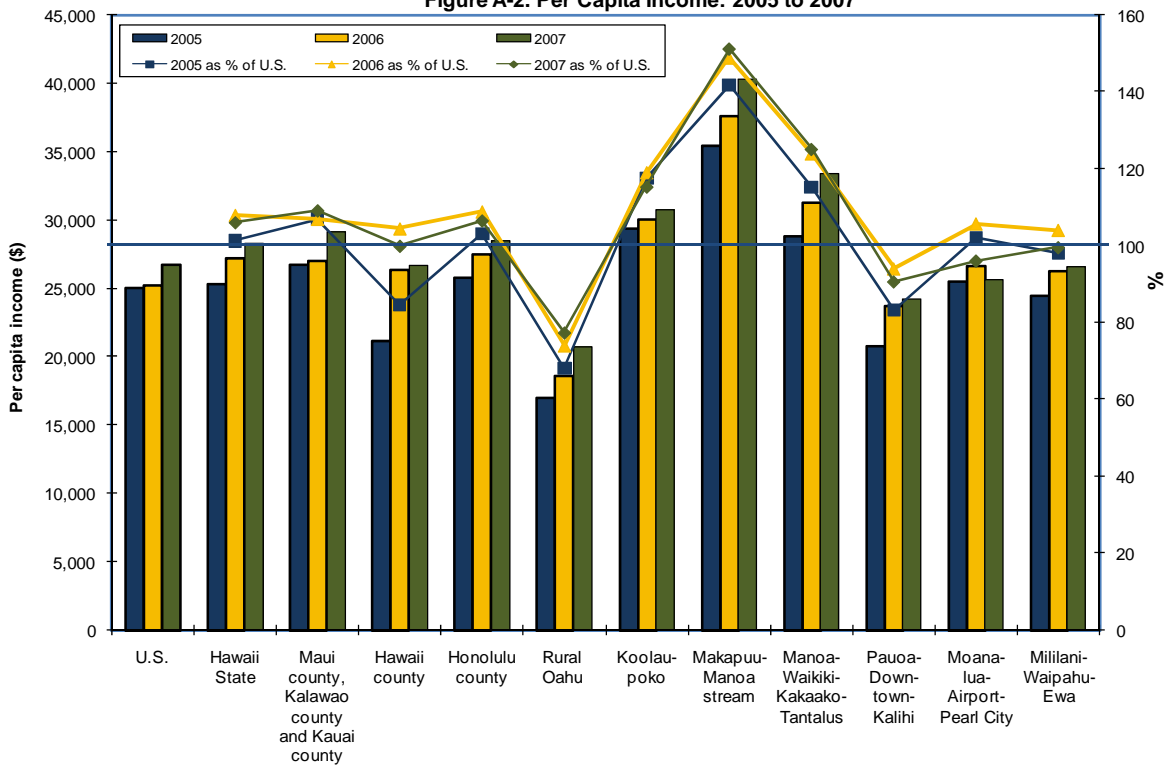
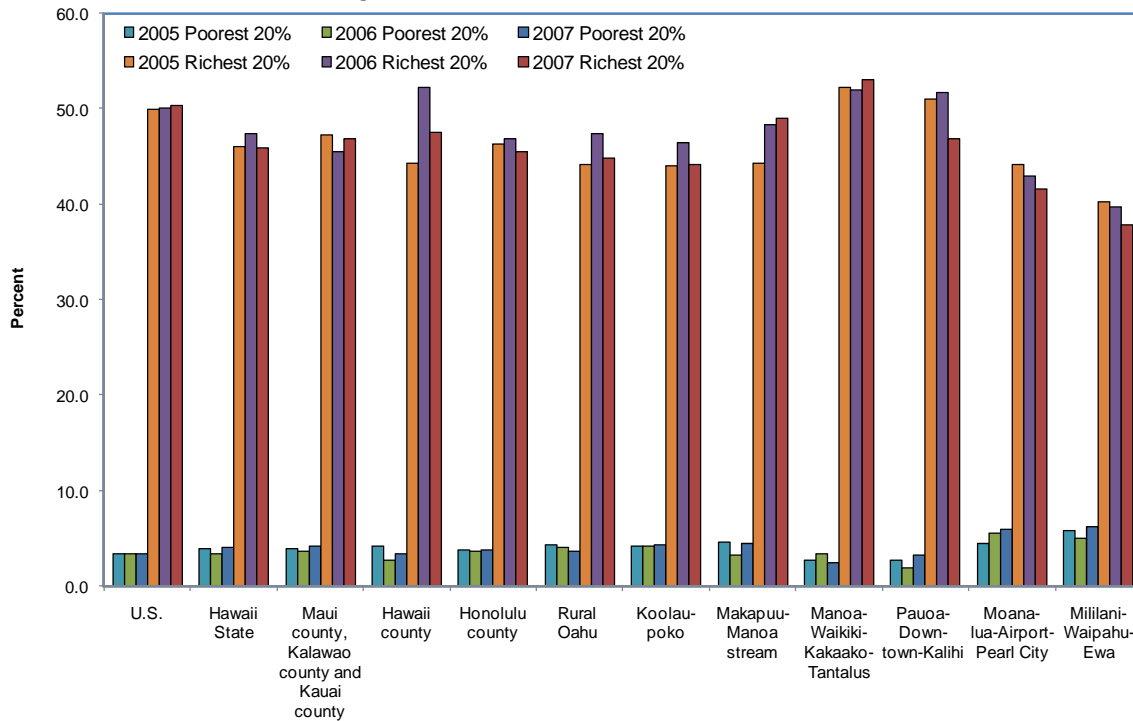


Figure A-3. Household Income Distribution: 2005 to 2007

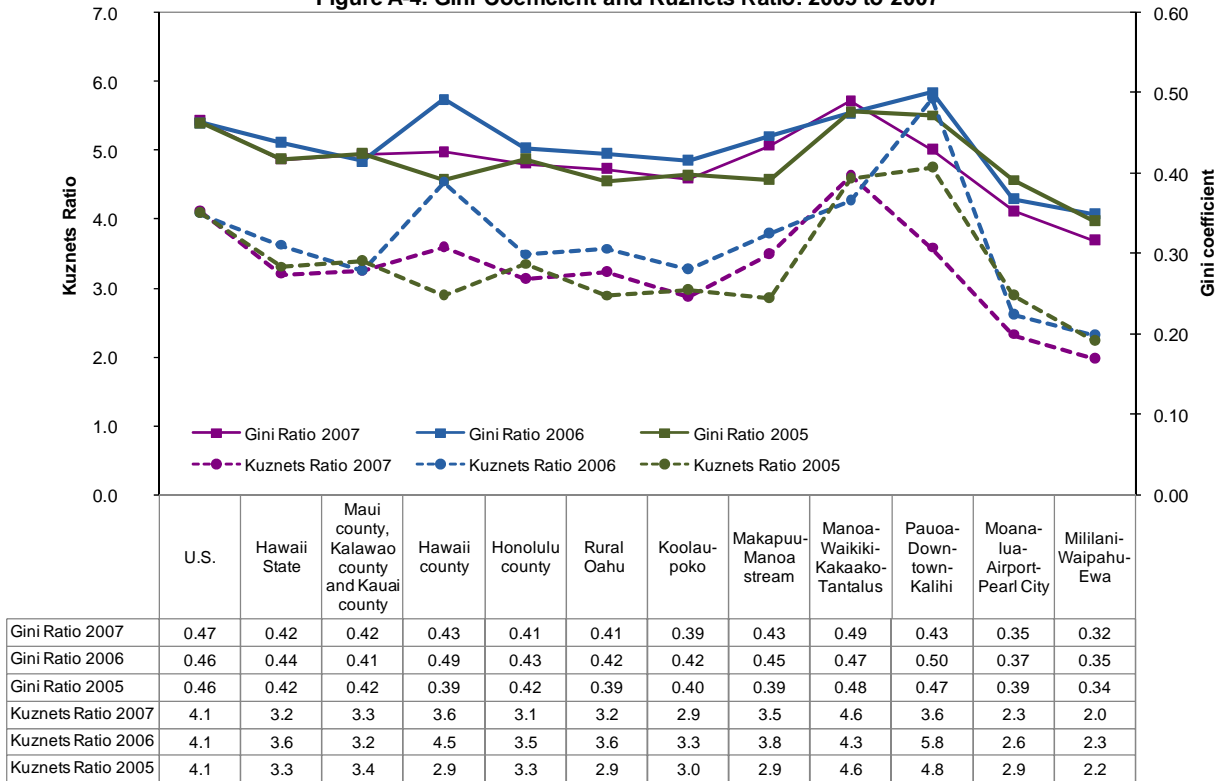


PUMA 303 was the only area in which more than 11 percent of the households had income of \$200,000 or more in 2007 (Table A-1). Although only around 2 percent of the households in Mililani-Waipahu-Ewa fell into the income range of \$200,000 or more, 56.0% of the households in this area had income of \$75,000 or more. Rural Oahu had the lowest per capita income in the state at \$20,658 in 2007, about 27% lower than the state level.

To measure how equally income is distributed in a particular area, the Gini coefficient is commonly used. The Gini Coefficient is a summary measure that expresses the degree of overall equality or inequality present in an income distribution and ranges from 0 to 1. 0 indicates perfect income equality, meaning that income of every household in a particular area is exactly the same.

On the other hand, a Gini coefficient of 1 indicates absolute inequality of income distribution; that is, a single household earns all of the income in the economy. The Gini coefficient is derived from household income data. Manoa-Waikiki-Kakaako-Tantalus area (PUMA 304) had the highest Gini coefficient of 0.49 in 2007, indicating that household income in this area was the most unequally distributed among all the PUMAs in Hawaii in 2007. As indicated by the value of the Gini coefficient, household income was more evenly distributed in PUMA 306 (Moanalua-Airport-Pearl City) and PUMA 307 (Mililani-Waipahu-Ewa) in 2006 and 2007 than in other areas.

Figure A-4. Gini Coefficient and Kuznets Ratio: 2005 to 2007



Another measure of income inequality is the Kuznets Ratio. This is the ratio of the income received by the top 20%, compared to the bottom 40% of the household. The higher the ratio, the higher the proportion of income that is earned by the richest 20% of household. PUMA 304 (Manoa-Waikiki-Kakaako-Tantalus) had the highest Kuznets Ratio in the state (least equal income distribution), while PUMA 306 (Moanalua-Airport-Pearl City) and PUMA 307 (Mililani-Waipahu-Ewa) had in the lowest ratios (more equal distribution) 2006 and 2007. These results are consistent with those revealed by the Gini coefficient.

Table A-1. Household Income: 2005 to 2007

	U.S.	State	Maui county, Kalawao county and Kauai county	Hawaii county	Honolulu county	Rural Oahu	Koolau- poko	Makapuu- Manoa stream	Manoa- Waikiki- Kakaako- Tantalus	Pauoa- Down- town- Kalihi	Moana- lua- Airport- Pearl City	Mililani- Waipahu- Ewa
2007												
Number of Households	112,377,977	439,685	71,824	63,250	304,611	28,733	36,638	39,089	56,216	35,676	43,509	64,750
Median household income (\$)	50,740	63,746	62,316	59,111	65,367	58,268	80,968	77,822	44,544	56,350	65,661	81,658
As % of U.S.		125.6	122.8	116.5	128.8	114.8	159.6	153.4	87.8	111.1	129.4	160.9
Mean household income (\$)	69,193	79,749	80,264	72,812	81,068	70,763	97,783	105,990	62,315	67,235	78,358	86,862
As % of U.S.		115.3	116.0	105.2	117.2	102.3	141.3	153.2	90.1	97.2	113.2	125.5
Household Income Level (%)												
Less than \$10,000	7.3	5.8	4.0	7.7	5.8	8.4	2.6	4.2	12.2	9.1	2.4	2.5
\$10,000 to \$14,999	5.6	3.4	4.3	5.2	2.9	3.3	2.3	2.3	3.7	5.8	1.8	1.7
\$15,000 to \$24,999	11.0	7.4	6.7	9.1	7.2	9.4	5.9	6.8	11.8	8.2	5.0	3.9
\$25,000 to \$34,999	10.7	8.2	9.6	6.9	8.1	9.1	4.9	6.7	12.5	8.0	8.5	6.1
\$35,000 to \$49,999	14.5	12.8	12.8	13.6	12.7	12.9	11.3	8.9	15.4	14.8	16.3	9.7
\$50,000 to \$74,999	18.9	20.6	21.0	22.3	20.2	21.4	19.4	18.3	18.9	20.8	22.8	20.1
\$75,000 to \$99,999	12.2	15.0	15.3	13.4	15.3	15.9	15.6	15.6	9.0	13.4	16.3	20.5
\$100,000 to \$149,999	11.7	16.5	16.1	14.7	17.0	12.6	21.1	17.2	9.4	11.7	17.5	25.8
\$150,000 to \$199,999	4.0	5.7	5.1	4.0	6.2	4.7	9.4	8.6	2.8	5.0	6.2	7.4
\$200,000 or more	4.0	4.5	5.1	3.1	4.7	2.4	7.5	11.4	4.2	3.2	3.2	2.3
2006												
Number of Households	111,617,402	432,632	70,237	63,178	299,217	28,932	36,847	37,521	52,687	34,257	43,770	65,203
Median household income (\$)	48,451	61,160	57,986	55,390	63,372	52,844	78,227	82,615	43,028	48,352	63,973	76,815
As % of U.S.		126.2	119.7	114.3	130.8	109.1	161.5	170.5	88.8	99.8	132.0	158.5
Mean household income (\$)	65,527	77,805	75,162	72,925	79,456	67,200	94,786	106,977	60,545	68,025	76,716	83,520
As % of U.S.		118.7	114.7	111.3	121.3	102.6	144.7	163.3	92.4	103.8	117.1	127.5
Household Income Level (%)												
Less than \$10,000	8.0	6.6	7.1	9.0	6.0	6.2	3.7	4.8	8.7	14.2	3.2	3.3
\$10,000 to \$14,999	5.9	3.9	4.4	5.9	3.4	4.0	2.6	1.9	6.3	6.5	1.4	1.7
\$15,000 to \$24,999	11.4	8.2	7.7	9.7	8.0	10.7	5.8	7.1	13.8	9.9	5.2	5.0
\$25,000 to \$34,999	11.2	8.3	8.9	8.8	8.1	8.7	6.7	5.8	10.9	9.8	10.2	5.2
\$35,000 to \$49,999	14.8	13.5	14.4	12.4	13.5	17.2	9.8	9.4	17.7	10.8	15.3	13.2
\$50,000 to \$74,999	19.0	19.9	21.1	20.7	19.5	21.2	18.9	15.1	19.1	15.3	25.3	20.2
\$75,000 to \$99,999	11.8	14.3	14.2	14.1	14.3	10.7	15.0	14.7	10.1	11.6	15.4	19.5
\$100,000 to \$149,999	10.9	15.5	14.4	10.9	16.7	14.2	21.6	21.7	6.7	12.7	15.3	23.3
\$150,000 to \$199,999	3.6	5.1	3.9	4.2	5.6	5.0	7.4	8.9	2.6	4.9	5.0	6.1
\$200,000 or more	3.4	4.6	3.9	4.2	4.9	2.1	8.4	10.7	4.1	4.3	3.7	2.4

Continued on next page.

Table A-1. Household Income: 2005 to 2007 -Con.

	U.S.	State	Maui county, Kalawao county and Kauai county	Hawaii county	Honolulu county	Rural Oahu	Koolau-poko	Makapuu-Manoa stream	Manoa-Waikiki-Kakaako-Tantalus	Pauoa-Downtown-Kalihi	Moana-lua-Airport-Pearl City	Mililani-Waipahu-Ewa
2005												
Number of Households	111,090,617	430,007	69,980	59,470	300,557	29,368	35,737	37,606	56,960	36,589	45,235	59,062
Median household income (\$)	46,242	58,112	60,033	48,524	60,485	52,446	76,268	77,886	39,510	43,400	62,905	72,184
As % of U.S.		125.7	129.8	104.9	130.8	113.4	164.9	168.4	85.4	93.9	136.0	156.1
Mean household income (\$)	62,556	71,762	74,641	59,493	73,519	62,550	91,521	96,273	55,051	59,489	73,677	79,973
As % of U.S.		114.7	119.3	95.1	117.5	100.0	146.3	153.9	88.0	95.1	117.8	127.8
Household Income Level (%)												
Less than \$10,000	8.7	6.4	5.0	7.3	6.6	5.7	2.3	3.2	13.6	12.4	4.7	2.8
\$10,000 to \$14,999	6.2	4.6	4.2	6.3	4.4	6.3	3.1	3.2	4.5	9.9	2.8	2.7
\$15,000 to \$24,999	12.0	7.8	8.3	8.8	7.4	5.2	6.5	6.6	12.7	9.2	6.2	4.4
\$25,000 to \$34,999	11.5	9.6	9.7	11.1	9.2	15.0	6.9	4.8	12.3	9.7	9.2	7.3
\$35,000 to \$49,999	15.1	14.7	15.2	18.1	14.0	12.3	12.1	12.0	16.4	14.9	16.1	12.6
\$50,000 to \$74,999	18.9	20.4	19.9	21.5	20.3	26.0	18.3	18.8	17.9	16.5	23.7	21.6
\$75,000 to \$99,999	11.4	13.7	15.7	12.6	13.5	12.3	15.3	14.8	9.1	10.0	12.9	19.0
\$100,000 to \$149,999	10.1	14.6	13.2	9.8	15.9	12.1	21.1	20.6	8.3	10.7	17.0	21.3
\$150,000 to \$199,999	3.2	5.0	5.0	2.3	5.5	3.7	9.1	10.3	2.8	4.2	4.9	5.2
\$200,000 or more	3.0	3.2	3.7	2.3	3.2	1.3	5.4	5.6	2.4	2.5	2.5	3.1

Source: U.S. Census Bureau, American Community Survey (annual), Economic Characteristics, <http://factfinder.census.gov/servlet/DatasetMainPageServlet?_program=ACS&_submenuId=&_lang=en&_ts=>>.

Table A-2. Family Income: 2005 to 2007

	U.S.	State	Maui county, Kalawao county and Kauai county	Hawaii county	Honolulu county	Rural Oahu	Koolau- poko	Makapuu- Manoa stream	Manoa- Waikiki- Kakaako- Tantalus	Pauoa- Down- town- Kalihi	Moana- lua- Airport- Pearl City	Mililani- Waipahu- Ewa
2007												
Number of Families	75,119,260	306,623	48,784	44,184	213,655	22,716	29,651	27,363	23,571	23,092	33,656	53,606
Median family income (\$)	61,173	73,879	73,493	67,157	76,337	61,945	87,156	96,007	63,382	62,627	72,397	83,959
As % of U.S.		120.8	120.1	109.8	124.8	101.3	142.5	156.9	103.6	102.4	118.3	137.2
Mean family income (\$)	80,265	89,711	90,722	80,186	91,450	70,380	104,142	127,429	88,328	75,295	83,233	88,483
As % of U.S.		111.8	113.0	99.9	113.9	87.7	129.7	158.8	110.0	93.8	103.7	110.2
Per capita income (\$)	26,688	28,287	29,112	26,657	28,413	20,658	30,754	40,308	33,360	24,192	25,637	26,564
As % of U.S.		106.0	109.1	99.9	106.5	77.4	115.2	151.0	125.0	90.6	96.1	99.5
Family Income Level (%)												
Less than \$10,000	4.5	2.7	2.6	4.5	2.4	7.3	2.2	0.9	3.6	2.7	0.8	1.5
\$10,000 to \$14,999	3.4	2.0	1.5	3.3	1.9	1.4	1.4	1.0	1.7	5.9	0.9	1.7
\$15,000 to \$24,999	8.6	5.2	4.7	7.9	4.8	8.4	4.2	2.0	5.1	6.1	4.3	4.5
\$25,000 to \$34,999	9.5	7.1	7.4	7.1	7.0	9.0	4.5	5.2	8.5	6.9	8.6	6.7
\$35,000 to \$49,999	14.1	12.1	12.3	12.9	11.9	11.2	10.7	7.5	16.9	15.8	17.1	8.1
\$50,000 to \$74,999	20.6	21.6	22.5	23.1	21.1	24.8	19.8	18.9	22.8	23.5	20.6	20.0
\$75,000 to \$99,999	14.5	17.2	17.8	17.1	17.1	17.7	15.3	16.8	12.5	14.8	17.3	20.8
\$100,000 to \$149,999	14.6	19.7	18.6	16.0	20.7	13.4	22.6	22.1	16.0	15.1	19.7	27.0
\$150,000 to \$199,999	5.1	6.9	6.2	4.5	7.6	4.4	11.3	10.5	4.8	5.9	7.2	7.5
\$200,000 or more	5.1	5.5	6.4	3.5	5.7	2.5	8.0	15.2	8.0	3.3	3.3	2.4
2006												
Number of Families	74,564,066	301,102	47,617	43,595	209,890	23,450	28,867	27,858	23,758	22,291	32,262	51,404
Median family income (\$)	58,526	70,277	67,112	61,211	73,457	53,706	82,718	96,838	58,590	58,454	70,183	82,778
As % of U.S.		120.1	114.7	104.6	125.5	91.8	141.3	165.5	100.1	99.9	119.9	141.4
Mean family income (\$)	76,130	87,638	85,914	80,302	89,553	68,998	101,089	118,424	80,643	79,623	83,950	88,745
As % of U.S.		115.1	112.9	105.5	117.6	90.6	132.8	155.6	105.9	104.6	110.3	116.6
Per capita income (\$)	25,267	27,251	26,991	26,356	27,478	18,662	30,060	37,597	31,294	23,728	26,686	26,261
As % of U.S.		107.9	106.8	104.3	108.8	73.9	119.0	148.8	123.9	93.9	105.6	103.9
Family Income Level (%)												
Less than \$10,000	4.8	4.1	3.9	5.9	3.8	5.1	4.3	3.9	4.0	7.5	1.7	2.3
\$10,000 to \$14,999	3.6	2.3	2.2	4.0	1.9	4.4	0.4	0.5	2.2	5.2	1.1	1.5
\$15,000 to \$24,999	9.1	6.4	8.3	7.8	5.6	9.3	3.9	4.5	9.0	10.0	2.6	4.0
\$25,000 to \$34,999	10.0	7.3	8.0	9.4	6.8	9.7	5.2	3.8	10.8	9.3	6.7	5.0
\$35,000 to \$49,999	14.6	13.3	14.1	14.8	12.9	17.4	9.7	7.2	17.8	10.1	16.0	12.7
\$50,000 to \$74,999	20.9	20.1	20.3	21.9	19.7	19.7	20.0	15.3	20.8	17.0	25.8	18.8
\$75,000 to \$99,999	14.3	16.2	17.4	15.1	16.2	11.8	16.1	17.1	12.5	14.4	17.3	19.5
\$100,000 to \$149,999	13.7	18.6	16.6	12.5	20.3	15.4	23.9	24.5	11.8	15.1	18.0	26.0
\$150,000 to \$199,999	4.6	5.9	4.1	3.6	6.8	5.1	7.7	10.4	3.9	5.7	6.7	7.2
\$200,000 or more	4.4	5.7	5.1	4.9	5.9	2.2	8.9	12.8	7.2	5.9	4.0	2.9

Continued on next page.

Table A-2. Family Income: 2005 to 2007 -Con.

	U.S.	State	Maui county, Kalawao county and Kauai county	Hawaii county	Honolulu county	Rural Oahu	Koolau-poko	Makapuu-Manoa stream	Manoa-Waikiki-Kakaako-Tantalus	Pauoa-Downtown-Kalihi	Moanalua-Airport-Pearl City	Mililani-Waipahu-Ewa
2005												
Number of Families	74,341,149	305,789	49,354	42,986	213,449	23,626	29,103	27,793	26,649	25,067	33,976	47,235
Median family income (\$)	55,832	66,472	66,399	55,441	69,407	54,016	80,182	90,010	54,668	50,198	70,293	77,409
As % of U.S.		119.1	118.9	99.3	124.3	96.7	143.6	161.2	97.9	89.9	125.9	138.6
Mean family income (\$)	72,585	80,044	82,521	65,368	82,427	63,729	95,497	107,955	69,575	67,564	82,339	83,907
As % of U.S.		110.3	113.7	90.1	113.6	87.8	131.6	148.7	95.9	93.1	113.4	115.6
Per capita income (\$)	25,035	25,326	26,749	21,174	25,781	17,034	29,433	35,458	28,806	20,828	25,523	24,527
As % of U.S.		101.2	106.8	84.6	103.0	68.0	117.6	141.6	115.1	83.2	101.9	98.0
Family Income Level (%)												
Less than \$10,000	5.3	4.0	3.4	6.5	3.6	3.4	1.4	2.6	8.0	6.4	3.1	2.0
\$10,000 to \$14,999	3.9	3.0	2.3	4.2	2.9	5.6	1.4	2.3	2.5	7.2	0.2	2.5
\$15,000 to \$24,999	9.6	6.0	6.5	6.6	5.8	6.9	5.8	3.3	11.8	8.7	4.4	2.7
\$25,000 to \$34,999	10.5	8.6	8.7	11.0	8.1	13.7	6.5	3.5	9.0	11.2	9.4	6.1
\$35,000 to \$49,999	15.0	14.1	14.8	15.9	13.6	11.8	13.0	9.4	15.2	16.4	16.4	12.7
\$50,000 to \$74,999	21.0	21.1	20.6	23.3	20.8	28.8	17.8	17.8	20.4	18.8	21.2	21.3
\$75,000 to \$99,999	13.8	16.0	18.5	15.5	15.6	11.9	16.0	18.1	13.5	10.7	15.1	19.7
\$100,000 to \$149,999	12.8	17.7	16.2	11.5	19.3	13.4	22.2	24.2	11.8	13.1	21.2	23.6
\$150,000 to \$199,999	4.1	5.8	4.3	2.8	6.7	3.8	9.6	12.0	4.0	4.0	6.3	6.6
\$200,000 or more	3.9	3.7	4.7	2.6	3.7	0.8	6.2	6.7	3.7	3.5	2.8	2.7

Source: U.S. Census Bureau, American Community Survey (annual), Economic Characteristics, http://factfinder.census.gov/servlet/DatasetMainPageServlet?_program=ACS&_submenuId=&_lang=en&_ts=>.

Table A-3. Household Income Distribution: 2005 to 2007

Category	U.S.	State	Maui county, Kalawao county and Kauai county	Hawaii county	Honolulu county	Rural Oahu	Koolau-poko	Makapuu-Manoa stream	Manoa-Waikiki-Kakaako-Tantalus	Pauoa-Downtown-Kalihi	Moana-lua-Airport-Pearl City	Mililani-Waipahu-Ewa
2007	% of Total Household Income Going to Each Fifth of Households											
% of Households												
Poorest 20%	3.4	4.0	4.2	3.4	3.8	3.6	4.3	4.4	2.5	3.2	5.9	6.2
2nd 20%	8.8	10.3	10.2	9.9	10.7	10.2	11.0	9.6	9.0	9.8	12.1	13.0
3rd 20%	14.7	16.1	15.5	16.7	16.1	16.9	16.9	15.2	13.3	16.7	16.7	18.6
4th 20%	22.7	23.8	23.3	22.5	23.9	24.5	23.6	21.8	22.2	23.4	23.8	24.3
Richest 20%	50.4	45.8	46.8	47.6	45.5	44.7	44.1	49.0	53.0	46.8	41.6	37.9
Gini ratio	0.47	0.42	0.42	0.43	0.41	0.41	0.39	0.43	0.49	0.43	0.35	0.32
Kuznets ratio	4.1	3.2	3.3	3.6	3.1	3.2	2.9	3.5	4.6	3.6	2.3	2.0
2006	% of Total Household Income Going to Each Fifth of Households											
% of Households												
Poorest 20%	3.3	3.4	3.6	2.7	3.7	4.0	4.2	3.3	3.3	1.9	5.5	5.0
2nd 20%	9.0	9.7	10.4	8.7	9.8	9.3	10.0	9.5	8.8	7.1	10.9	12.1
3rd 20%	14.8	15.8	16.4	13.7	15.8	16.4	16.1	15.7	14.2	14.1	17.1	17.1
4th 20%	22.8	23.7	24.1	22.7	24.0	22.9	23.3	23.2	21.8	25.2	23.5	26.1
Richest 20%	50.1	47.4	45.5	52.1	46.8	47.4	46.4	48.4	51.9	51.7	42.9	39.6
Gini ratio	0.46	0.44	0.41	0.49	0.43	0.42	0.42	0.45	0.47	0.50	0.37	0.35
Kuznets ratio	4.1	3.6	3.2	4.5	3.5	3.6	3.3	3.8	4.3	5.8	2.6	2.3
2005	% of Total Household Income Going to Each Fifth of Households											
% of Households												
Poorest 20%	3.3	3.9	3.9	4.2	3.7	4.3	4.1	4.5	2.7	2.7	4.5	5.8
2nd 20%	8.8	10.0	10.0	11.1	10.1	11.0	10.6	11.0	8.6	8.0	10.7	12.3
3rd 20%	14.9	15.9	15.8	16.4	16.1	16.5	16.1	15.9	13.4	14.9	16.6	17.6
4th 20%	23.1	24.1	23.0	24.1	23.8	24.1	25.1	24.3	23.0	23.4	24.1	24.1
Richest 20%	49.9	46.0	47.3	44.3	46.2	44.1	44.0	44.2	52.3	51.0	44.1	40.2
Gini ratio	0.46	0.42	0.42	0.39	0.42	0.39	0.40	0.39	0.48	0.47	0.39	0.34
Kuznets ratio	4.1	3.3	3.4	2.9	3.3	2.9	3.0	2.9	4.6	4.8	2.9	2.2

Source: U.S. Census Bureau, 2005-2007 American Community Survey Public Use Microdata Sample (PUMS); <http://factfinder.census.gov/servlet/DatasetMainPageServlet?_program=ACS&_submenuId=&_lang=en&_ts=>>, calculations by the Hawaii State Department of Business, Economic Development & Tourism.

TABLE A-4. Percentage of Families with Income in the Past 12 Months Below the Poverty Level: 2005 to 2007

Category	U.S.	State	Maui county, Kalawao county and Kauai county	Hawaii county	Honolulu county	Rural Oahu	Koolau-poko	Makapuu-Manoa stream	Manoa-Waikiki-Kakaako-Tantalus	Pauoa-Downtown-Kalihi	Moana-lua-Airport-Pearl City	Mililani-Waipahu-Ewa
2007												
All families	9.5	5.4	4.5	9.2	4.8	10.2	4.9	1.8	5.0	7.2	2.9	3.9
With related children under 18 years	14.9	7.9	6.0	14.0	7.2	12.5	6.8	3.0	7.2	12.7	5.6	5.7
With related children under 5 years only	16.0	7.1	3.4	12.4	7.3	19.9	1.3	2.4	5.9	28.8	7.6	3.1
Married couple families	4.5	2.7	2.1	4.2	2.5	3.2	3.7	1.4	3.4	6.9	1.5	1.0
With related children under 18 years	6.4	3.5	2.1	6.1	3.4	2.8	3.9	2.0	2.0	11.7	3.4	1.8
With related children under 5 years only	5.9	1.7	0.0	0.0	2.2	1.1	0.0	0.0	4.7	11.5	5.5	0.0
Families with female householder, no husband present	28.2	15.9	16.9	25.9	13.5	25.9	9.4	4.4	12.3	10.8	10.8	17.1
With related children under 18 years	36.5	22.2	22.6	32.7	19.6	31.4	14.8	10.3	18.9	16.9	17.2	19.7
With related children under 5 years only	44.8	26.0	12.4	33.4	29.8	53.0	6.6	48.5	0.0	59.8	21.0	22.5
2006												
All families	9.8	7.1	7.1	11.5	6.3	10.9	4.8	4.4	7.6	14.0	3.4	3.9
With related children under 18 years	15.0	9.7	12.1	16.5	8.2	13.1	6.6	5.1	12.6	17.9	5.1	5.0
With related children under 5 years only	15.9	7.8	12.7	20.0	4.8	11.6	3.5	13.4	0.0	0.0	1.3	3.6
Married couple families	4.7	3.9	3.9	7.0	3.3	4.4	3.5	1.5	4.9	9.5	1.6	1.7
With related children under 18 years	6.5	3.9	6.7	7.1	3.1	3.4	3.4	1.3	6.5	8.9	2.7	1.4
With related children under 5 years only	6.1	1.5	0.0	4.5	1.3	0.0	4.0	2.5	0.0	0.0	0.0	1.0
Families with female householder, no husband present	28.6	20.7	20.9	31.1	18.6	31.1	12.4	18.2	16.3	26.2	10.5	14.0
With related children under 18 years	36.9	29.0	26.9	41.0	27.2	38.1	22.9	19.9	24.6	45.7	16.4	19.1
With related children under 5 years only	45.2	26.4	44.7	66.1	14.6	28.3	0.0	52.6	0.0	0.0	0.0	0.0
2005												
All families	10.2	7.7	4.6	10.6	7.3	12.9	3.2	(1/)	11.5	13.0	(1/)	5.5
With related children under 18 years	15.6	10.5	7.4	17.1	9.2	16.0	3.3	(1/)	14.7	15.3	(1/)	6.0
With related children under 5 years only	17.1	10.1	2.4	28.5	8.4	9.1	5.7	(1/)	2.4	7.4	(1/)	10.3
Married couple families	5.0	4.2	1.9	6.1	4.1	6.1	1.8	(1/)	7.6	11.8	(1/)	2.3
With related children under 18 years	6.9	4.9	2.9	7.9	4.5	9.1	0.5	(1/)	10.7	9.7	(1/)	2.4
With related children under 5 years only	6.6	5.4	0.0	22.7	3.6	0.9	1.1	(1/)	3.0	9.8	(1/)	3.7
Families with female householder, no husband present	29.4	20.9	17.1	34.0	18.8	30.9	11.3	(1/)	24.4	19.8	(1/)	18.1
With related children under 18 years	37.7	28.4	23.1	45.6	25.2	35.0	17.1	(1/)	31.1	28.9	(1/)	20.2
With related children under 5 years only	47.4	30.6	10.4	50.9	30.9	37.3	25.3	(1/)	0.0	0.0	(1/)	48.0
Change 2005-2007												
All families	-0.7	-2.3	-0.1	-1.4	-2.5	-2.7	1.7	N/A	-6.5	-5.8	N/A	-1.6
With related children under 18 years	-0.7	-2.6	-1.4	-3.1	-2.0	-3.5	3.5	N/A	-7.5	-2.6	N/A	-0.3
With related children under 5 years only	-1.1	-3.0	1.0	-16.1	-1.1	10.8	-4.4	N/A	3.5	21.4	N/A	-7.2
Married couple families	-0.5	-1.5	0.2	-1.9	-1.6	-2.9	1.9	N/A	-4.2	-4.9	N/A	-1.3
With related children under 18 years	-0.5	-1.4	-0.8	-1.8	-1.1	-6.3	3.4	N/A	-8.7	2.0	N/A	-0.6
With related children under 5 years only	-0.7	-3.7	0.0	-22.7	-1.4	0.2	-1.1	N/A	1.7	1.7	N/A	-3.7
Families with female householder, no husband present	-1.2	-5.0	-0.2	-8.1	-5.3	-5.0	-1.9	N/A	-12.1	-9.0	N/A	-1.0
With related children under 18 years	-1.2	-6.2	-0.5	-12.9	-5.6	-3.6	-2.3	N/A	-12.2	-12.0	N/A	-0.5
With related children under 5 years only	-2.6	-4.6	2.0	-17.5	-1.1	15.7	-18.7	N/A	0.0	59.8	N/A	-25.5

NA = Not available.

1/ Sample size was too small.

Source: U.S. Census Bureau, American Community Survey (annual), Economic Characteristics.

<http://factfinder.census.gov/servlet/DatasetMainPageServlet?_program=ACS&_submenuId=en&_lang=en&_ts=>.

TABLE A-5. Percentage of People whose Income in the Past 12 Months Below the Poverty Level: 2005 to 2007

Category	U.S.	State	Maui county, Kalawao county and Kauai county	Hawaii county	Honolulu county	Rural Oahu	Koolau-poko	Makapuu-Manoa stream	Manoa-Waikiki-Kakaako-Tantalus	Pauoa-Down-town-Kalihi	Moana-lua-Airport-Pearl City	Mililani-Waipahu-Ewa
2007												
All people 1/	13.0	8.0	5.5	12.8	7.6	10.4	6.6	4.6	12.2	10.3	5.2	6.4
Under 18 years	18.0	9.8	5.8	18.0	9.1	15.4	8.2	4.8	6.3	11.4	6.9	9.0
Related children under 18 years	17.6	9.4	5.6	17.5	8.8	15.4	8.0	4.6	6.3	11.2	6.9	8.2
Related children under 5 years	20.8	11.2	5.8	22.1	10.5	26.0	7.2	0.8	8.7	15.0	9.0	8.9
Related children 5 to 17 years	16.4	8.7	5.4	15.8	8.0	10.6	8.5	6.7	5.0	10.1	5.9	7.8
18 years and over	11.3	7.5	5.5	11.3	7.2	8.5	6.0	4.5	13.0	10.1	4.6	5.4
18 to 64 years	11.6	7.7	5.3	12.2	7.4	8.7	7.0	5.4	14.5	9.4	4.6	5.2
65 years and over	9.5	6.3	6.2	7.3	6.1	7.4	1.7	1.6	8.0	12.3	4.5	6.8
People in families	10.6	5.3	3.8	10.1	4.8	8.9	4.9	2.1	4.2	6.4	3.8	4.3
Unrelated individuals 15 years and over	23.6	20.8	13.6	24.1	21.8	23.5	19.9	17.2	25.0	24.9	15.7	21.5
2006												
All people 1/	13.3	9.3	9.7	14.1	8.4	12.0	5.6	6.1	10.9	19.5	4.8	4.8
Under 18 years	18.3	11.4	14.3	17.9	10.0	14.2	9.3	4.2	12.0	26.0	6.2	6.0
Related children under 18 years	17.9	10.7	14.1	17.1	9.3	14.0	8.4	4.2	12.0	23.9	5.8	5.0
Related children under 5 years	21.0	11.0	13.9	17.7	9.8	15.1	8.3	12.3	9.9	23.2	5.6	5.1
Related children 5 to 17 years	16.7	10.6	14.1	16.8	9.0	13.6	8.5	1.2	12.8	24.2	5.9	5.0
18 years and over	11.6	8.6	8.3	12.9	7.9	11.1	4.4	6.5	10.7	17.9	4.3	4.4
18 to 64 years	12.0	8.5	8.4	13.0	7.8	11.1	4.7	6.8	10.8	17.5	4.3	4.0
65 years and over	9.9	9.1	7.7	12.9	8.6	10.5	3.2	5.6	10.4	19.5	4.6	7.4
People in families	10.8	6.8	7.6	11.3	6.0	10.0	4.7	3.3	8.2	13.7	3.3	3.4
Unrelated individuals 15 years and over	24.4	21.4	18.5	25.3	21.1	26.5	13.2	21.4	16.1	39.5	14.4	16.1
2005												
All people 1/	13.3	9.8	6.5	13.2	9.4	16.7	3.7	7.3	16.1	14.5	4.7	6.6
Under 18 years	18.5	12.7	8.9	18.2	11.3	23.3	3.9	8.5	16.6	19.4	5.6	6.5
Related children under 18 years	18.2	12.2	8.5	16.5	11.0	23.1	(2/)	(2/)	(2/)	19.4	(2/)	6.3
Related children under 5 years	21.3	11.8	6.1	24.4	10.2	14.5	(2/)	(2/)	(2/)	19.0	(2/)	9.4
Related children 5 to 17 years	17.0	12.4	9.4	13.5	11.4	26.3	(2/)	(2/)	(2/)	19.7	(2/)	5.1
18 years and over	11.6	8.9	5.8	11.5	8.9	13.3	3.6	7.0	16.1	13.2	4.4	6.6
18 to 64 years	11.9	8.9	6.1	12.4	8.6	13.8	2.9	7.5	16.5	11.5	4.0	6.5
65 years and over	9.9	8.9	3.8	7.1	9.9	9.2	6.4	5.5	14.5	18.7	6.2	7.3
People in families	11.2	7.5	5.3	11.7	7.8	15.3	3.1	6.1	13.0	12.0	3.4	6.0
Unrelated individuals 15 years and over	23.1	22.4	15.5	27.3	22.7	30.2	11.8	18.6	24.2	29.1	17.3	23.1

1/ The Group Quarters (GQ) population is included in the 2006 and 2007 ACS and not included in the 2005 ACS. The part of the group quarters population in the poverty universe is many times more likely to be in poverty than people living in households. Direct comparisons would likely result in erroneous conclusions about changes in the poverty status of all people in the poverty universe, thus comparisons cannot be made.

2/ Sample size was too small.

Source: U.S. Census Bureau, American Community Survey (annual), Economic Characteristics,

<http://factfinder.census.gov/servlet/DatasetMainPageServlet?_program=ACS&_submenuId=&_lang=en&_ts=>.

B. Employment

Hawaii had a labor force participation rate of 65.4% in 2007, slightly higher than the 64.8% rate for the nation. Mililani-Waipahu-Ewa area had the highest labor force participation rate at 70.3%, followed by Maui and Kauai Counties at 69.0%. Pauoa-Downtown-Kalihi had the lowest labor force participation rate at 58.0% in the same year (Table B-1).

For all three years, 2005-2007, Rural Oahu (PUMA 301) had the highest unemployment rate among the PUMAs at more than 8.0 percent. Rural Oahu is also the only PUMA in Hawaii that had an unemployment rate higher than the national average for the past three years (Table B-1).

Over 40 percent of the workers were engaged in management, professional and related occupations in Makapuu-Manoa Stream (PUMA 303) during the past three years (Table B-2), much higher than the state average of between 33.1% and 32.2% and the national average of around 34 percent during the same periods.

There were more government workers in Moanalua-Airport-Pearl City (PUMA 306), Mililani-Waipahu-Ewa (PUMA 307), Rural Oahu (PUMA 301), and Koolaupoko (PUMA 302) areas, perhaps because these areas are close to military bases. In 2007, government workers in the Moanalua-Airport-Pearl City area accounted for 27.7 percent of the total area workforce (Table B-4).

Four areas on Oahu had high percentages of Armed Forces. These areas were Moanalua-Airport-Pearl City (PUMA 306), Mililani-Waipahu-Ewa (PUMA 307), Koolaupoko (PUMA 302), and Rural Oahu (PUMA 301). About 14.3% of the labor force consisted of Armed Forces members in PUMA 306 and 11.6 percent in PUMA 307 in 2007 (Table B-1). Two other areas had slightly less than 10% who were in the Armed Forces in 2007. The share of armed forces in 2005 was much lower than in 2006 and 2007 because 2005 data did not include military barracks and other group.

Table B-1. Employment Status: 2005 to 2007

	U.S.	Hawaii State	Maui county, Kalawao county and Kauai county	Hawaii county	Honolulu County	Rural Oahu	Koolau-poko	Makapuu-Manoa Stream	Manoa-Waikiki-Kakaako-Tantalus	Pauoa-Downtown-Kalihi	Moana-lua-Airport-Pearl City	Mililani-Waipahu-Ewa
2007												
Population 16 years and over	236,416,572	1,030,247	164,216	138,584	727,447	77,881	95,226	87,405	94,659	86,626	109,210	176,440
In labor force	153,212,564	673,524	113,383	89,159	470,982	48,799	62,921	54,170	59,261	50,262	71,546	124,023
Civilian labor force	152,211,303	635,965	113,185	88,619	434,161	44,629	56,966	53,529	58,015	49,986	61,344	109,692
Employed	142,588,118	607,108	108,025	83,838	415,245	40,974	54,480	52,287	55,243	48,289	58,602	105,370
Unemployed	9,623,185	28,857	5,160	4,781	18,916	3,655	2,486	1,242	2,772	1,697	2,742	4,322
Armed Forces	1,001,261	37,559	198	540	36,821	4,170	5,955	641	1,246	276	10,202	14,331
Not in labor force	83,204,008	356,723	50,833	49,425	256,465	29,082	32,305	33,235	35,398	36,364	37,664	52,417
Unemployment rate	6.3	4.5	4.6	5.4	4.4	8.2	4.4	2.3	4.8	3.4	4.5	3.9
2006												
Population 16 years and over	234,243,963	1,023,610	161,792	136,798	725,020	88,456	99,696	90,538	92,576	88,124	105,843	159,787
In labor force	152,193,214	675,895	112,363	91,433	472,099	58,926	66,916	55,672	59,084	50,633	68,259	112,609
Civilian labor force	151,203,992	638,345	112,307	91,433	434,605	49,206	60,027	55,400	57,706	50,320	57,020	104,744
Employed	141,501,434	610,394	109,268	87,092	414,034	45,242	57,504	53,874	55,757	46,893	55,377	99,387
Unemployed	9,702,558	27,951	3,039	4,341	20,571	3,964	2,523	1,526	1,949	3,427	1,825	5,357
Armed Forces	989,222	37,550	56	-	37,494	9,720	6,889	272	1,378	313	11,057	7,865
Not in labor force	82,050,749	347,715	49,429	45,365	252,921	29,530	32,780	34,866	33,492	37,491	37,584	47,178
Unemployment rate	6.4	4.4	2.7	4.7	4.7	8.1	4.2	2.8	3.4	6.8	3.2	5.1
2005												
Population 16 years and over	223,524,814	971,888	156,760	128,343	686,785	75,537	87,096	86,220	98,069	86,206	104,828	148,829
In labor force	147,299,391	631,607	111,055	79,218	441,334	47,759	58,202	54,415	62,531	48,675	66,337	103,415
Civilian labor force	146,576,413	609,666	110,763	79,170	419,733	44,588	54,989	54,222	61,658	47,970	59,915	96,391
Employed	136,458,810	582,731	106,115	75,541	401,075	40,661	52,736	52,987	58,305	47,000	57,048	92,338
Unemployed	10,117,603	26,935	4,648	3,629	18,658	3,927	2,253	1,235	3,353	970	2,867	4,053
Armed Forces	722,978	21,941	292	48	21,601	3,171	3,213	193	873	705	6,422	7,024
Not in labor force	76,225,423	340,281	45,705	49,125	245,451	27,778	28,894	31,805	35,538	37,531	38,491	45,414
Unemployment rate	6.9	4.4	4.2	4.6	4.4	8.8	4.1	2.3	5.4	2.0	4.8	4.2
% share 2007												
In labor force (% of population 16 yrs and over)	64.8	65.4	69.0	64.3	64.7	62.7	66.1	62.0	62.6	58.0	65.5	70.3
Civilian labor force (% of total labor force)	99.3	94.4	99.8	99.4	92.2	91.5	90.5	98.8	97.9	99.5	85.7	88.4
Employed (% of civilian labor force)	93.7	95.5	95.4	94.6	95.6	91.8	95.6	97.7	95.2	96.6	95.5	96.1
Unemployed (% of civilian labor force)	6.3	4.5	4.6	5.4	4.4	8.2	4.4	2.3	4.8	3.4	4.5	3.9
Armed Forces (% of total labor force)	0.7	5.6	0.2	0.6	7.8	8.5	9.5	1.2	2.1	0.5	14.3	11.6
Not in labor force (% of population 16 yrs and over)	35.2	34.6	31.0	35.7	35.3	37.3	33.9	38.0	37.4	42.0	34.5	29.7
% share 2006												
In labor force (% of population 16 yrs and over)	65.0	66.0	69.4	66.8	65.1	66.6	67.1	61.5	63.8	57.5	64.5	70.5
Civilian labor force (% of total labor force)	99.4	94.4	100.0	100.0	92.1	83.5	89.7	99.5	97.7	99.4	83.8	93.0
Employed (% of civilian labor force)	93.6	95.6	97.3	95.3	95.3	91.9	95.8	97.2	96.6	93.2	96.8	94.9
Unemployed (% of civilian labor force)	6.4	4.4	2.7	4.7	4.7	8.1	4.2	2.8	3.4	6.8	3.2	5.1
Armed Forces (% of total labor force)	0.6	5.6	0.0	0.0	7.9	16.5	10.3	0.5	2.3	0.6	16.2	7.0
Not in labor force (% of population 16 yrs and over)	35.0	34.0	30.6	33.2	34.9	33.4	32.9	38.5	36.2	42.5	35.5	29.5
% share 2005												
In labor force (% of population 16 yrs and over)	65.9	65.0	70.8	61.7	64.3	63.2	66.8	63.1	63.8	56.5	63.3	69.5
Civilian labor force (% of total labor force)	99.5	96.5	99.7	99.9	95.1	93.4	94.5	99.6	98.6	98.6	90.3	93.2
Employed (% of civilian labor force)	93.1	95.6	95.8	95.4	95.6	91.2	95.9	97.7	94.6	98.0	95.2	95.8
Unemployed (% of civilian labor force)	6.9	4.4	4.2	4.6	4.4	8.8	4.1	2.3	5.4	2.0	4.8	4.2
Armed Forces (% of total labor force)	0.5	3.5	0.3	0.1	4.9	6.6	5.5	0.4	1.4	1.4	9.7	6.8
Not in labor force (% of population 16 yrs and over)	34.1	35.0	29.2	38.3	35.7	36.8	33.2	36.9	36.2	43.5	36.7	30.5

Source: U.S. Census Bureau, American Community Survey (annual), Economic Characteristics, <http://factfinder.census.gov/servlet/DatasetMainPageServlet?_program=ACS&_submenuId=&_lang=en&_ts=>>

Table B-2. Employment by Occupation: 2005 to 2007 1/

Category	U.S.	Hawaii State	Maui county, Kalawao county and Kauai county	Hawaii county	Honolulu County	Rural Oahu	Koolau-poko	Makapuu-Manoa Stream	Manoa-Waikiki-Kakaako-Tantalus	Pauoa-Down-town-Kalihi	Moana-lua-Airport-Pearl City	Mililani-Waipahu-Ewa
2007												
Management, professional, and related Service	49,290,852	205,096	32,900	27,105	145,091	9,639	21,233	23,977	21,852	14,713	18,343	35,334
Sales and office	23,883,286	124,994	25,520	16,971	82,503	9,997	8,036	8,109	12,679	11,170	12,201	20,311
Farming, fishing, and forestry	36,471,369	155,417	26,133	20,419	108,865	10,099	14,977	13,763	15,193	12,321	15,813	26,699
Construction, extraction, maintenance and repair	995,609	4,814	1,912	1,698	1,204	281	216	-	177	224	-	306
Production, transportation, and material moving	13,795,740	64,633	12,154	9,774	42,705	6,740	5,165	3,698	2,850	5,177	6,332	12,743
	18,151,262	52,154	9,406	7,871	34,877	4,218	4,853	2,740	2,492	4,684	5,913	9,977
2006												
Management, professional, and related Service	48,058,369	201,797	32,002	23,908	145,887	11,906	22,810	25,691	21,576	13,271	18,995	31,638
Sales and office	23,361,096	129,638	28,416	19,711	81,511	9,716	8,874	6,778	13,294	14,497	9,402	18,950
Farming, fishing, and forestry	36,615,694	163,846	27,013	22,479	114,354	10,696	15,256	16,019	16,108	10,403	16,526	29,346
Construction, extraction, maintenance and repair	1,007,036	6,243	982	2,615	2,646	376	558	179	302	794	49	388
Production, transportation, and material moving	14,094,249	62,851	11,486	12,028	39,337	6,740	6,781	3,308	1,700	4,623	5,496	10,689
	18,364,990	46,019	9,369	6,351	30,299	5,808	3,225	1,899	2,777	3,305	4,909	8,376
2005												
Management, professional, and related Service	46,514,512	187,414	26,154	21,060	140,200	11,418	20,858	23,037	25,126	12,434	19,075	28,252
Sales and office	22,224,170	127,387	31,761	18,444	77,182	8,840	8,088	8,716	8,805	12,005	11,248	19,480
Farming, fishing, and forestry	35,352,046	159,817	26,686	18,124	115,007	10,735	12,936	15,475	19,095	13,203	16,248	27,315
Construction, extraction, maintenance and repair	929,636	4,090	772	1,689	1,629	718	164	149	-	84	-	514
Production, transportation, and material moving	13,630,934	57,329	12,192	10,315	34,822	4,941	5,965	3,216	2,097	3,481	5,213	9,909
	17,807,512	46,694	8,550	5,909	32,235	4,009	4,725	2,394	3,182	5,793	5,264	6,868
% of all workers: 2007												
Management, professional, and related Service	34.6	33.8	30.5	32.3	34.9	23.5	39.0	45.9	39.6	30.5	31.3	33.5
Sales and office	16.7	20.6	23.6	20.2	19.9	24.4	14.8	15.5	23.0	23.1	20.8	19.3
Farming, fishing, and forestry	25.6	25.6	24.2	24.4	26.2	24.6	27.5	26.3	27.5	25.5	27.0	25.3
Construction, extraction, maintenance and repair	0.7	0.8	1.8	2.0	0.3	0.7	0.4	0.0	0.3	0.5	0.0	0.3
Production, transportation, and material moving	9.7	10.6	11.3	11.7	10.3	16.4	9.5	7.1	5.2	10.7	10.8	12.1
	12.7	8.6	8.7	9.4	8.4	10.3	8.9	5.2	4.5	9.7	10.1	9.5
% of all workers: 2006												
Management, professional, and related Service	34.0	33.1	29.3	27.5	35.2	26.3	39.7	47.7	38.7	28.3	34.3	31.8
Sales and office	16.5	21.2	26.0	22.6	19.7	21.5	15.4	12.6	23.8	30.9	17.0	19.1
Farming, fishing, and forestry	25.9	26.8	24.7	25.8	27.6	23.6	26.5	29.7	28.9	22.2	29.8	29.5
Construction, extraction, maintenance and repair	0.7	1.0	0.9	3.0	0.6	0.8	1.0	0.3	0.5	1.7	0.1	0.4
Production, transportation, and material moving	10.0	10.3	10.5	13.8	9.5	14.9	11.8	6.1	3.0	9.9	9.9	10.8
	13.0	7.5	8.6	7.3	7.3	12.8	5.6	3.5	5.0	7.0	8.9	8.4
% of all workers: 2005												
Management, professional, and related Service	34.1	32.2	24.6	27.9	35.0	28.1	39.6	43.5	43.1	26.5	33.4	30.6
Sales and office	16.3	21.9	29.9	24.4	19.2	21.7	15.3	16.4	15.1	25.5	19.7	21.1
Farming, fishing, and forestry	25.9	27.4	25.1	24.0	28.7	26.4	24.5	29.2	32.8	28.1	28.5	29.6
Construction, extraction, maintenance and repair	0.7	0.7	0.7	2.2	0.4	1.8	0.3	0.3	0.0	0.2	0.0	0.6
Production, transportation, and material moving	10.0	9.8	11.5	13.7	8.7	12.2	11.3	6.1	3.6	7.4	9.1	10.7
	13.0	8.0	8.1	7.8	8.0	9.9	9.0	4.5	5.5	12.3	9.2	7.4

1/ Civilian employed population 16 years and over.

Source: U.S. Census Bureau, American Community Survey (annual), Economic Characteristics,

<http://factfinder.census.gov/servlet/DatasetMainPageServlet?_program=ACS&_submenuId=&_lang=en&_ts=>.

Table B-3. Employment by Industry: 2005 to 2007 1/

Category	U.S.	Hawaii State	Maui county, Kalawao county and Kauai county	Hawaii county	Honolulu County	Rural Oahu	Koolau-poko	Makapuu-Manoa Stream	Manoa-Waikiki-Kakaako-Tantalus	Pauoa-Downtown-Kalihi	Moana-lua-Airport-Pearl City	Milliani-Waipahu-Ewa
2007												
Agriculture, forestry, fishing and hunting, and mining	2,634,756	10,770	4,595	3,371	2,804	1,001	533	42	252	280	275	421
Construction	11,049,193	51,915	10,889	9,490	31,536	4,437	5,104	2,883	2,101	4,130	3,977	8,904
Manufacturing	16,093,022	21,082	3,651	2,617	14,814	2,008	1,975	1,851	1,248	1,881	2,087	3,764
Wholesale trade	4,512,451	14,249	1,144	1,950	11,155	667	1,454	1,792	1,404	947	1,041	3,850
Retail trade	16,322,468	69,614	11,937	10,642	47,035	3,652	6,129	5,014	7,318	4,747	7,585	12,590
Transportation and warehousing, and utilities	7,395,133	36,827	6,410	3,815	26,602	2,263	4,227	2,507	3,066	2,630	5,396	6,513
Information	3,545,556	12,497	1,815	700	9,982	566	1,693	1,195	1,339	1,150	1,171	2,868
Finance and insurance, and real estate and rental and leasing	10,232,761	41,014	6,757	4,693	29,564	1,651	4,056	4,295	4,474	5,283	3,696	6,109
Professional, scientific, and management, and administrative and waste management services	14,649,929	59,723	9,982	6,756	42,985	4,309	5,175	6,785	7,456	3,928	5,170	10,162
Educational services, and health care, and social assistance	30,157,621	120,116	15,126	18,021	86,969	8,333	11,724	11,580	11,309	8,567	12,058	23,398
Arts, entertainment, and recreation, and accommodation, and food services	12,480,475	90,018	23,346	13,125	53,547	7,105	5,229	6,761	9,802	8,470	5,738	10,442
Other services, except public administration	6,833,711	26,925	4,714	4,063	18,148	1,920	2,246	2,553	2,710	2,901	2,053	3,765
Public administration	6,681,042	52,358	7,659	4,595	40,104	3,062	4,935	5,029	2,764	3,375	8,355	12,584
2006												
Agriculture, forestry, fishing and hunting, and mining	2,588,454	9,864	2,302	4,106	3,456	601	851	265	349	840	-	550
Construction	11,183,930	51,174	9,711	10,880	30,583	4,780	5,897	3,948	2,073	2,525	3,957	7,403
Manufacturing	16,350,948	16,851	2,444	1,842	12,565	1,828	1,262	570	574	2,315	1,582	4,434
Wholesale trade	4,842,294	18,232	2,847	2,172	13,213	1,402	1,725	1,056	1,338	1,688	2,330	3,674
Retail trade	16,268,904	72,383	15,017	11,414	45,952	5,282	5,051	6,306	7,264	4,636	7,137	10,276
Transportation and warehousing, and utilities	7,144,167	33,654	4,742	3,253	25,659	3,252	3,441	2,936	2,690	1,803	4,572	6,965
Information	3,524,717	13,091	1,548	1,799	9,744	878	1,314	1,618	1,430	546	792	3,166
Finance and insurance, and real estate and rental and leasing	10,241,270	41,089	5,786	5,622	29,681	1,773	4,150	5,012	4,266	3,231	3,863	7,386
Professional, scientific, and management, and administrative and waste management services	14,301,698	62,291	10,570	8,731	42,990	3,799	5,720	8,087	6,363	5,904	4,599	8,518
Educational services, and health care, and social assistance	29,491,331	119,906	18,135	14,323	87,448	10,401	13,598	12,811	11,787	9,228	11,273	18,350
Arts, entertainment, and recreation, and accommodation, and food services	12,149,998	90,241	25,306	14,845	50,090	5,480	6,098	5,002	10,529	9,091	4,781	9,109
Other services, except public administration	6,796,996	27,572	5,588	3,862	18,122	1,480	2,388	2,075	3,189	2,169	2,677	4,144
Public administration	6,616,727	54,046	5,272	4,243	44,531	4,286	6,009	4,188	3,905	2,917	7,814	15,412
2005												
Agriculture, forestry, fishing and hunting, and mining	2,383,293	7,595	2,411	2,612	2,572	831	448	141	323	84	-	745
Construction	10,532,912	46,085	11,026	9,362	25,697	4,114	4,891	2,907	1,993	2,104	3,286	6,402
Manufacturing	16,273,893	19,685	3,072	2,249	14,364	1,068	1,445	977	2,455	2,723	1,114	4,582
Wholesale trade	4,829,662	18,163	2,966	1,549	13,648	752	2,060	2,433	1,371	2,266	2,243	2,523
Retail trade	15,864,275	70,369	12,360	9,236	48,773	5,692	4,757	5,870	7,809	5,972	6,504	12,169
Transportation and warehousing, and utilities	6,877,585	32,823	6,107	2,387	24,329	2,183	3,340	3,103	3,154	2,792	3,922	5,835
Information	3,387,849	11,632	1,725	1,007	8,900	649	1,372	1,112	1,592	1,208	1,024	1,943
Finance and insurance, and real estate and rental and leasing	9,905,115	43,416	8,167	5,094	30,155	2,261	3,425	5,443	5,733	1,998	5,560	5,735
Professional, scientific, and management, and administrative and waste management services	13,457,013	54,983	9,479	5,381	40,123	3,419	7,287	5,969	6,069	4,727	4,080	8,572
Educational services, and health care, and social assistance	28,225,662	109,556	15,628	14,117	79,811	7,706	11,169	10,889	11,729	8,494	12,330	17,494
Arts, entertainment, and recreation, and accommodation, and food services	11,555,579	91,093	23,603	14,243	53,247	6,311	4,607	6,794	8,615	8,721	6,468	11,731
Other services, except public administration	6,596,459	28,985	5,980	3,978	19,027	1,251	2,224	2,733	2,806	2,898	2,685	4,430
Public administration	6,569,513	48,346	3,591	4,326	40,429	4,424	5,711	4,616	4,656	3,013	7,832	10,177

Continued on next page

Table B-3. Employment by Industry: 2005 to 2007 1/ -Con

Category	U.S.	Hawaii State	Maui county, Kalawao county and Kauai county	Hawaii county	Honolulu County	Rural Oahu	Koolau-poko	Makapuu-Manoa Stream	Manoa-Waikiki-Kakaako-Tantalus	Pauoa-Down-town-Kalihi	Moana-lua-Airport-Pearl City	Mililani-Waipahu-Ewa
% of total employment: 2007												
Agriculture, forestry, fishing and hunting, and mining	1.8	1.8	4.3	4.0	0.7	2.4	1.0	0.1	0.5	0.6	0.5	0.4
Construction	7.7	8.6	10.1	11.3	7.6	10.8	9.4	5.5	3.8	8.6	6.8	8.5
Manufacturing	11.3	3.5	3.4	3.1	3.6	4.9	3.6	3.5	2.3	3.9	3.6	3.6
Wholesale trade	3.2	2.3	1.1	2.3	2.7	1.6	2.7	3.4	2.5	2.0	1.8	3.7
Retail trade	11.4	11.5	11.1	12.7	11.3	8.9	11.3	9.6	13.2	9.8	12.9	11.9
Transportation and warehousing, and utilities	5.2	6.1	5.9	4.6	6.4	5.5	7.8	4.8	5.6	5.4	9.2	6.2
Information	2.5	2.1	1.7	0.8	2.4	1.4	3.1	2.3	2.4	2.4	2.0	2.7
Finance and insurance, and real estate and rental and leasing	7.2	6.8	6.3	5.6	7.1	4.0	7.4	8.2	8.1	10.9	6.3	5.8
Professional, scientific, and management, and administrative and waste management services	10.3	9.8	9.2	8.1	10.4	10.5	9.5	13.0	13.5	8.1	8.8	9.6
Educational services, and health care, and social assistance	21.2	19.8	14.0	21.5	20.9	20.3	21.5	22.1	20.5	17.7	20.6	22.2
Arts, entertainment, and recreation, and accommodation, and food services	8.8	14.8	21.6	15.7	12.9	17.3	9.6	12.9	17.7	17.5	9.8	9.9
Other services, except public administration	4.8	4.4	4.4	4.8	4.4	4.7	4.1	4.9	4.9	6.0	3.5	3.6
Public administration	4.7	8.6	7.1	5.5	9.7	7.5	9.1	9.6	5.0	7.0	14.3	11.9
% of total employment: 2006												
Agriculture, forestry, fishing and hunting, and mining	1.8	1.6	2.1	4.7	0.8	1.3	1.5	0.5	0.6	1.8	0.0	0.6
Construction	7.9	8.4	8.9	12.5	7.4	10.6	10.3	7.3	3.7	5.4	7.1	7.4
Manufacturing	11.6	2.8	2.2	2.1	3.0	4.0	2.2	1.1	1.0	4.9	2.9	4.5
Wholesale trade	3.4	3.0	2.6	2.5	3.2	3.1	3.0	2.0	2.4	3.6	4.2	3.7
Retail trade	11.5	11.9	13.7	13.1	11.1	11.7	8.8	11.7	13.0	9.9	12.9	10.3
Transportation and warehousing, and utilities	5.0	5.5	4.3	3.7	6.2	7.2	6.0	5.4	4.8	3.8	8.3	7.0
Information	2.5	2.1	1.4	2.1	2.4	1.9	2.3	3.0	2.6	1.2	1.4	3.2
Finance and insurance, and real estate and rental and leasing	7.2	6.7	5.3	6.5	7.2	3.9	7.2	9.3	7.7	6.9	7.0	7.4
Professional, scientific, and management, and administrative and waste management services	10.1	10.2	9.7	10.0	10.4	8.4	9.9	15.0	11.4	12.6	8.3	8.6
Educational services, and health care, and social assistance	20.8	19.6	16.6	16.4	21.1	23.0	23.6	23.8	21.1	19.7	20.4	18.5
Arts, entertainment, and recreation, and accommodation, and food services	8.6	14.8	23.2	17.0	12.1	12.1	10.6	9.3	18.9	19.4	8.6	9.2
Other services, except public administration	4.8	4.5	5.1	4.4	4.4	3.3	4.2	3.9	5.7	4.6	4.8	4.2
Public administration	4.7	8.9	4.8	4.9	10.8	9.5	10.4	7.8	7.0	6.2	14.1	15.5
% of total employment: 2005												
Agriculture, forestry, fishing and hunting, and mining	1.7	1.3	2.3	3.5	0.6	2.0	0.8	0.3	0.6	0.2	0.0	0.8
Construction	7.7	7.9	10.4	12.4	6.4	10.1	9.3	5.5	3.4	4.5	5.8	6.9
Manufacturing	11.9	3.4	2.9	3.0	3.6	2.6	2.7	1.8	4.2	5.8	2.0	5.0
Wholesale trade	3.5	3.1	2.8	2.1	3.4	1.8	3.9	4.6	2.4	4.8	3.9	2.7
Retail trade	11.6	12.1	11.6	12.2	12.2	14.0	9.0	11.1	13.4	12.7	11.4	13.2
Transportation and warehousing, and utilities	5.0	5.6	5.8	3.2	6.1	5.4	6.3	5.9	5.4	5.9	6.9	6.3
Information	2.5	2.0	1.6	1.3	2.2	1.6	2.6	2.1	2.7	2.6	1.8	2.1
Finance and insurance, and real estate and rental and leasing	7.3	7.5	7.7	6.7	7.5	5.6	6.5	10.3	9.8	4.3	9.7	6.2
Professional, scientific, and management, and administrative and waste management services	9.9	9.4	8.9	7.1	10.0	8.4	13.8	11.3	10.4	10.1	7.2	9.3
Educational services, and health care, and social assistance	20.7	18.8	14.7	18.7	19.9	19.0	21.2	20.6	20.1	18.1	21.6	18.9
Arts, entertainment, and recreation, and accommodation, and food services	8.5	15.6	22.2	18.9	13.3	15.5	8.7	12.8	14.8	18.6	11.3	12.7
Other services, except public administration	4.8	5.0	5.6	5.3	4.7	3.1	4.2	5.2	4.8	6.2	4.7	4.8
Public administration	4.8	8.3	3.4	5.7	10.1	10.9	10.8	8.7	8.0	6.4	13.7	11.0

1/ Civilian employed population 16 years and over.

Source: U.S. Census Bureau, American Community Survey (annual), Economic Characteristics,

<http://factfinder.census.gov/servlet/DatasetMainPageServlet?_program=ACS&_submenuId=&_lang=en&_ts=>>

Table B-4. Class of Worker: 2005 to 2007

Category	U.S.	Hawaii State	Maui county, Kalawao county and Kauai county	Hawaii county	Honolulu County	Rural Oahu	Koolau-poko	Makapuu-Manoa Stream	Manoa-Waikiki-Kakaako-Tantalus	Pauoa-Down-town-Kalihi	Moana-lua-Airport-Pearl City	Mililani-Waipahu-Ewa
2007												
Private wage and salary workers	112,071,285	435,051	77,260	58,830	298,961	30,092	39,434	36,283	40,401	38,870	38,607	75,274
Government workers	20,626,159	124,695	18,765	15,596	90,334	8,476	11,286	11,507	10,061	7,037	16,237	25,730
Self-employed workers in own not incorporated business	9,576,062	46,248	11,618	9,412	25,218	2,200	3,658	4,267	4,687	2,335	3,758	4,313
Unpaid family workers	314,612	1,114	382	-	732	206	102	230	94	47	-	53
2006												
Private wage and salary workers	111,181,420	439,689	82,172	61,850	295,667	31,329	40,540	37,460	41,754	37,345	37,231	70,008
Government workers	20,363,443	122,726	16,262	14,454	92,010	10,842	12,084	10,913	10,430	7,197	15,103	25,441
Self-employed workers in own not incorporated business	9,629,574	47,044	10,652	10,471	25,921	2,968	4,820	5,364	3,512	2,351	2,968	3,938
Unpaid family workers	326,997	935	182	317	436	103	60	137	61	-	75	-
2005												
Private wage and salary workers	106,775,699	408,846	78,526	49,769	280,551	28,129	35,704	36,498	41,538	36,333	37,185	65,164
Government workers	19,921,824	121,868	15,849	13,741	92,278	9,564	12,848	10,872	11,569	7,756	16,253	23,416
Self-employed workers in own not incorporated business	9,444,809	49,816	11,196	11,475	27,145	2,841	4,150	5,312	4,904	2,622	3,610	3,706
Unpaid family workers	316,478	2,201	544	556	1,101	127	34	305	294	289	-	52
% total workers: 2007												
Private wage and salary workers	78.6	71.7	71.5	70.2	72.0	73.4	72.4	69.4	73.1	80.5	65.9	71.4
Government workers	14.5	20.5	17.4	18.6	21.8	20.7	20.7	22.0	18.2	14.6	27.7	24.4
Self-employed workers in own not incorporated business	6.7	7.6	10.8	11.2	6.1	5.4	6.7	8.2	8.5	4.8	6.4	4.1
Unpaid family workers	0.2	0.2	0.4	0.0	0.2	0.5	0.2	0.4	0.2	0.1	0.0	0.1
% total workers: 2006												
Private wage and salary workers	78.6	72.0	75.2	71.0	71.4	69.2	70.5	69.5	74.9	79.6	67.2	70.4
Government workers	14.4	20.1	14.9	16.6	22.2	24.0	21.0	20.3	18.7	15.3	27.3	25.6
Self-employed workers in own not incorporated business	6.8	7.7	9.7	12.0	6.3	6.6	8.4	10.0	6.3	5.0	5.4	4.0
Unpaid family workers	0.2	0.2	0.2	0.4	0.1	0.2	0.1	0.3	0.1	0.0	0.1	0.0
% total workers: 2005												
Private wage and salary workers	78.2	70.2	74.0	65.9	69.9	69.2	67.7	68.9	71.2	77.3	65.2	70.6
Government workers	14.6	20.9	14.9	18.2	23.0	23.5	24.4	20.5	19.8	16.5	28.5	25.4
Self-employed workers in own not incorporated business	6.9	8.5	10.6	15.2	6.8	7.0	7.9	10.0	8.4	5.6	6.3	4.0
Unpaid family workers	0.2	0.4	0.5	0.7	0.3	0.3	0.1	0.6	0.5	0.6	0.0	0.1

Source: U.S. Census Bureau, American Community Survey (annual), Economic Characteristics, <http://factfinder.census.gov/servlet/DatasetMainPageServlet?_program=ACS&_submenuId=&_lang=en&_ts=>>.

C. Education

Hawaii had a higher percentage of students attending private schools (24.9%) than the national average (17.0%) in 2007. Makapuu-Manoa Stream, Manoa-Waikiki-Kakaako-Tantalus and Koolaupoko are the three areas leading the state with more than one third of the students attending private schools in 2007. Students in Pauoa-Downtown-Kalihi, Rural Oahu and the neighbor islands had the least percentage of students attending private schools (Table C-1).

Among all areas in Hawaii, about 24 percent of those who enrolled in graduate or professional schools in 2007 lived in Manoa-Waikiki-Kakaako-Tantalus (PUMA 304). More than one fourth of those enrolled in college in the state lived in Mililani-Waipahu-Ewa (PUMA 307) in 2007 (Table C-1).

Those residents who were between 25 and 64 years of age and lived in Makapuu-Manoa stream area (PUMA 303) during the past three years were the most educated compared with other areas in the state (Table C-2). About 49.3 % of persons in PUMA 303 held at least a bachelor’s degree in 2007. Residents in Rural Oahu had the lowest percentage of persons with Bachelor’s degree or higher at 17.9% in 2007. The share of people with Bachelor’s degree or higher in the Pauoa-Downtown-Kalihi area (PUMA 305) was similar to that of U.S. during the past three years. However, this area had fairly large number of persons whose educational attainment was less than high school graduation in this area (17.3% in 2005, 20.2% in 2006 and 14.3% in 2007).

Figure C-1. Share of students enrolled in public school: 2005 to 2007

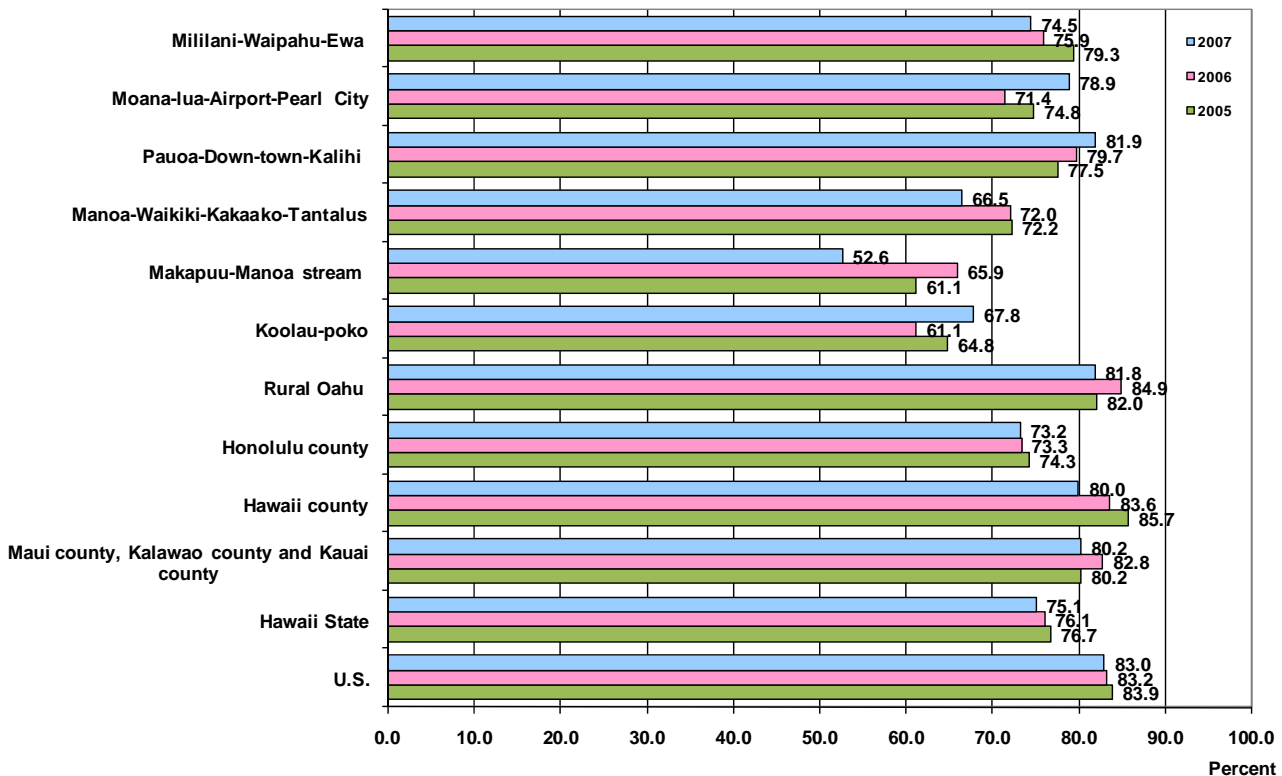


Table C-1. School Enrollment by Type of School by Grade level: 2005 to 2007 (Number of students who are 3 years and over and enrolled in schools)

	U.S.	Hawaii State	Maui county, Kalawao county and Kauai county	Hawaii county	Honolulu county	Rural Oahu	Koolau-poko	Makapuu-Manoa stream	Manoa-Waikiki-Kakaako-Tantalus	Pauoa-Downtown-Kalihi	Moana-lua-Airport-Pearl City	Mililani-Waipahu-Ewa
2007												
Enrolled in nursery school, preschool:	4,913,688	18,154	2,418	2,898	12,838	1,476	2,542	2,365	1,040	609	2,294	2,512
Public school	2,651,159	7,264	808	1,975	4,481	942	440	515	249	350	989	996
Private school	2,262,529	10,890	1,610	923	8,357	534	2,102	1,850	791	259	1,305	1,516
Enrolled in kindergarten:	4,028,537	15,547	2,530	2,243	10,774	1,461	1,559	1,175	883	716	1,693	3,287
Public school	3,477,949	12,098	1,991	1,648	8,459	1,424	1,176	524	461	552	1,571	2,751
Private school	550,588	3,449	539	595	2,315	37	383	651	422	164	122	536
Enrolled in grade 1 to grade 4:	15,824,443	59,775	8,527	8,266	42,982	7,108	4,953	3,194	2,996	4,444	7,630	12,657
Public school	14,019,923	48,664	7,350	6,841	34,473	6,798	4,095	1,196	1,893	3,936	6,705	9,850
Private school	1,804,520	11,111	1,177	1,425	8,509	310	858	1,998	1,103	508	925	2,807
Enrolled in grade 5 to grade 8:	16,335,812	58,060	9,874	7,216	40,970	5,968	5,939	3,884	2,054	4,451	6,822	11,852
Public school	14,557,110	45,279	8,288	5,554	31,437	5,689	4,058	1,910	1,223	3,564	5,755	9,238
Private school	1,778,702	12,781	1,586	1,662	9,533	279	1,881	1,974	831	887	1,067	2,614
Enrolled in grade 9 to grade 12:	17,433,099	71,245	12,130	10,491	48,624	6,377	7,383	4,575	3,058	5,665	7,237	14,329
Public school	15,766,412	57,413	10,420	8,484	38,509	6,085	5,667	2,642	2,201	4,517	6,110	11,287
Private school	1,666,687	13,832	1,710	2,007	10,115	292	1,716	1,933	857	1,148	1,127	3,042
Enrolled in college undergraduate years:	17,335,029	70,885	6,298	8,404	56,183	6,672	6,764	4,560	6,869	4,541	8,713	18,064
Public school	13,291,232	51,516	4,885	7,590	39,041	3,197	4,405	3,121	4,662	3,892	6,806	12,958
Private school	4,043,797	19,369	1,413	814	17,142	3,475	2,359	1,439	2,207	649	1,907	5,106
Enrolled in graduate or professional school:	3,458,919	15,260	965	1,673	12,622	979	1,253	1,386	3,675	820	2,108	2,401
Public school	2,050,705	9,649	542	853	8,254	453	772	1,214	2,984	590	845	1,396
Private school	1,408,214	5,611	423	820	4,368	526	481	172	691	230	1,263	1,005
Public school share by grade level, %												
Enrolled in nursery school, preschool:	54.0	40.0	33.4	68.2	34.9	63.8	17.3	21.8	23.9	57.5	43.1	39.6
Enrolled in kindergarten:	86.3	77.8	78.7	73.5	78.5	97.5	75.4	44.6	52.2	77.1	92.8	83.7
Enrolled in grade 1 to grade 4:	88.6	81.4	86.2	82.8	80.2	95.6	82.7	37.4	63.2	88.6	87.9	77.8
Enrolled in grade 5 to grade 8:	89.1	78.0	83.9	77.0	76.7	95.3	68.3	49.2	59.5	80.1	84.4	77.9
Enrolled in grade 9 to grade 12:	90.4	80.6	85.9	80.9	79.2	95.4	76.8	57.7	72.0	79.7	84.4	78.8
Enrolled in college undergraduate years:	76.7	72.7	77.6	90.3	69.5	47.9	65.1	68.4	67.9	85.7	78.1	71.7
Enrolled in graduate or professional school:	59.3	63.2	56.2	51.0	65.4	46.3	61.6	87.6	81.2	72.0	40.1	58.1
% of students in public schools	83.0	75.1	80.2	80.0	73.2	81.8	67.8	52.6	66.5	81.9	78.9	74.5
% of students in private schools	17.0	24.9	19.8	20.0	26.8	18.2	32.2	47.4	33.5	18.1	21.1	25.5
As % of state												
Enrolled in nursery, preschool and kindergarten:			14.7	15.3	70.1	8.7	12.2	10.5	5.7	3.9	11.8	17.2
Enrolled in grade 1 to grade 8:			15.6	13.1	71.2	11.1	9.2	6.0	4.3	7.5	12.3	20.8
Enrolled in grade 9 to grade 12:			17.0	14.7	68.2	9.0	10.4	6.4	4.3	8.0	10.2	20.1
Enrolled in college undergraduate years:			8.9	11.9	79.3	9.4	9.5	6.4	9.7	6.4	12.3	25.5
Enrolled in graduate or professional school:			6.3	11.0	82.7	6.4	8.2	9.1	24.1	5.4	13.8	15.7

Continued on next page.

Table C-1. School Enrollment by Type of School by Grade level: 2005 to 2007 (Number of students who are 3 years and over and enrolled in schools) -Con.

	U.S.	Hawaii State	Maui county, Kalawao county and Kauai county	Hawaii county	Honolulu county	Rural Oahu	Koolau-poko	Makapuu-Manoa stream	Manoa-Waikiki-Kakaako-Tantalus	Pauoa-Downtown-Kalihi	Moana-Iua-Airport-Pearl City	Mililani-Waipahu-Ewa
2006												
Enrolled in nursery school, preschool:	4,901,007	21,380	2,732	2,402	16,246	2,402	1,847	1,663	1,042	1,701	3,607	3,984
Public school	2,657,558	7,151	791	910	5,450	1,275	421	706	345	1,102	785	816
Private school	2,243,449	14,229	1,941	1,492	10,796	1,127	1,426	957	697	599	2,822	3,168
Enrolled in kindergarten:	4,012,680	15,451	1,876	1,912	11,663	2,268	991	1,506	1,162	805	1,753	3,178
Public school	3,451,817	11,793	1,562	1,643	8,588	1,886	290	1,138	980	614	1,488	2,192
Private school	560,863	3,658	314	269	3,075	382	701	368	182	191	265	986
Enrolled in grade 1 to grade 4:	15,758,734	59,125	9,031	8,012	42,082	6,723	6,227	4,599	2,325	4,612	5,585	12,011
Public school	13,988,893	50,150	7,927	6,870	35,353	6,413	4,746	3,056	1,718	4,254	4,911	10,255
Private school	1,769,841	8,975	1,104	1,142	6,729	310	1,481	1,543	607	358	674	1,756
Enrolled in grade 5 to grade 8:	16,498,217	68,109	12,914	9,679	45,516	7,428	5,053	4,543	3,993	4,530	5,786	14,183
Public school	14,748,117	54,792	10,896	8,095	35,801	6,774	3,308	2,755	2,833	3,700	4,938	11,493
Private school	1,750,100	13,317	2,018	1,584	9,715	654	1,745	1,788	1,160	830	848	2,690
Enrolled in grade 9 to grade 12:	17,500,473	70,901	12,403	10,310	48,188	7,254	6,883	5,846	3,478	5,935	6,136	12,656
Public school	15,845,223	57,656	11,220	8,851	37,585	6,868	4,477	3,302	2,381	5,202	4,914	10,441
Private school	1,655,250	13,245	1,183	1,459	10,603	386	2,406	2,544	1,097	733	1,222	2,215
Enrolled in college undergraduate years:	17,063,732	67,164	5,701	7,505	53,958	4,816	8,029	5,996	9,263	4,175	8,704	12,975
Public school	13,134,369	50,782	4,953	7,067	38,762	3,274	4,336	5,106	7,028	2,855	6,186	9,977
Private school	3,929,363	16,382	748	438	15,196	1,542	3,693	890	2,235	1,320	2,518	2,998
Enrolled in graduate or professional school:	3,387,101	13,743	1,474	1,368	10,901	536	1,443	1,883	1,994	940	1,842	2,263
Public school	2,024,132	7,900	833	986	6,081	183	1,053	1,092	1,463	365	639	1,286
Private school	1,362,969	5,843	641	382	4,820	353	390	791	531	575	1,203	977
Public school share by grade level, %												
Enrolled in nursery school, preschool:	54.2	33.4	29.0	37.9	33.5	53.1	22.8	42.5	33.1	64.8	21.8	20.5
Enrolled in kindergarten:	86.0	76.3	83.3	85.9	73.6	83.2	29.3	75.6	84.3	76.3	84.9	69.0
Enrolled in grade 1 to grade 4:	88.8	84.8	87.8	85.7	84.0	95.4	76.2	66.4	73.9	92.2	87.9	85.4
Enrolled in grade 5 to grade 8:	89.4	80.4	84.4	83.6	78.7	91.2	65.5	60.6	70.9	81.7	85.3	81.0
Enrolled in grade 9 to grade 12:	90.5	81.3	90.5	85.8	78.0	94.7	65.0	56.5	68.5	87.6	80.1	82.5
Enrolled in college undergraduate years:	77.0	75.6	86.9	94.2	71.8	68.0	54.0	85.2	75.9	68.4	71.1	76.9
Enrolled in graduate or professional school:	59.8	57.5	56.5	72.1	55.8	34.1	73.0	58.0	73.4	38.8	34.7	56.8
% of students in public schools	83.2	76.1	82.8	83.6	73.3	84.9	61.1	65.9	72.0	79.7	71.4	75.9
% of students in private schools	16.8	23.9	17.2	16.4	26.7	15.1	38.9	34.1	28.0	20.3	28.6	24.1
As % of state												
Enrolled in nursery, preschool and kindergarten:			12.5	11.7	75.8	12.7	7.7	8.6	6.0	6.8	14.6	19.4
Enrolled in grade 1 to grade 8:			17.2	13.9	68.8	11.1	8.9	7.2	5.0	7.2	8.9	20.6
Enrolled in grade 9 to grade 12:			17.5	14.5	68.0	10.2	9.7	8.2	4.9	8.4	8.7	17.9
Enrolled in college undergraduate years:			8.5	11.2	80.3	7.2	12.0	8.9	13.8	6.2	13.0	19.3
Enrolled in graduate or professional school:			10.7	10.0	79.3	3.9	10.5	13.7	14.5	6.8	13.4	16.5

Continued on next page.

Table C-1. School Enrollment by Type of School by Grade level: 2005 to 2007 (Number of students who are 3 years and over and enrolled in schools) -Con.

	U.S.	Hawaii State	Maui county, Kalawao county and Kauai county	Hawaii county	Honolulu county	Rural Oahu	Koolau-poko	Makapuu-Manoa stream	Manoa-Waikiki-Kakaako-Tantalus	Pauoa-Downtown-Kalihi	Moana-lua-Airport-Pearl City	Mililani-Waipahu-Ewa
2005												
Enrolled in nursery school, preschool:	4,785,409	21,469	3,470	3,537	14,462	1,664	2,411	2,734	1,717	1,216	1,979	2,741
Public school	2,541,238	6,087	1,167	1,323	3,597	654	340	387	307	392	470	1,047
Private school	2,244,171	15,382	2,303	2,214	10,865	1,010	2,071	2,347	1,410	824	1,509	1,694
Enrolled in kindergarten:	3,964,774	14,402	2,357	1,303	10,742	3,041	1,053	776	382	857	1,506	3,127
Public school	3,402,719	12,071	2,032	1,171	8,868	2,729	1,035	406	308	764	1,130	2,496
Private school	562,055	2,331	325	132	1,874	312	18	370	74	93	376	631
Enrolled in grade 1 to grade 4:	15,558,768	59,871	9,106	9,545	41,220	7,537	6,175	4,488	2,366	3,505	6,141	11,008
Public school	13,783,250	50,853	6,773	8,733	35,347	7,216	4,962	3,129	2,045	2,875	5,206	9,914
Private school	1,775,518	9,018	2,333	812	5,873	321	1,213	1,359	321	630	935	1,094
Enrolled in grade 5 to grade 8:	16,563,002	67,079	11,740	8,758	46,581	9,141	6,727	4,392	2,866	4,679	5,947	12,829
Public school	14,792,169	54,909	9,547	7,979	37,383	8,334	4,197	2,780	2,145	4,087	4,674	11,166
Private school	1,770,833	12,170	2,193	779	9,198	807	2,530	1,612	721	592	1,273	1,663
Enrolled in grade 9 to grade 12:	17,008,891	69,394	12,012	10,454	46,928	7,972	6,201	5,196	4,173	5,766	5,472	12,148
Public school	15,441,856	56,667	10,484	9,252	36,931	7,289	3,947	2,563	3,092	4,780	4,993	10,267
Private school	1,567,035	12,727	1,528	1,202	9,997	683	2,254	2,633	1,081	986	479	1,881
Enrolled in college undergraduate years:	14,581,709	66,994	7,961	7,752	51,281	7,449	5,361	6,188	7,508	5,522	8,880	10,373
Public school	11,620,950	50,568	7,593	7,084	35,891	4,167	3,850	5,029	5,589	3,886	6,421	6,949
Private school	2,960,759	16,426	368	668	15,390	3,282	1,511	1,159	1,919	1,636	2,459	3,424
Enrolled in graduate or professional school:	3,456,882	13,262	966	501	11,795	263	1,200	1,273	3,871	1,138	2,392	1,658
Public school	2,084,456	8,525	593	326	7,606	13	545	1,019	3,040	795	1,281	913
Private school	1,372,426	4,737	373	175	4,189	250	655	254	831	343	1,111	745
Public school share by grade level, %												
Enrolled in nursery school, preschool:	53.1	28.4	33.6	37.4	24.9	39.3	14.1	14.2	17.9	32.2	23.7	38.2
Enrolled in kindergarten:	85.8	83.8	86.2	89.9	82.6	89.7	98.3	52.3	80.6	89.1	75.0	79.8
Enrolled in grade 1 to grade 4:	88.6	84.9	74.4	91.5	85.8	95.7	80.4	69.7	86.4	82.0	84.8	90.1
Enrolled in grade 5 to grade 8:	89.3	81.9	81.3	91.1	80.3	91.2	62.4	63.3	74.8	87.3	78.6	87.0
Enrolled in grade 9 to grade 12:	90.8	81.7	87.3	88.5	78.7	91.4	63.7	49.3	74.1	82.9	91.2	84.5
Enrolled in college undergraduate years:	79.7	75.5	95.4	91.4	70.0	55.9	71.8	81.3	74.4	70.4	72.3	67.0
Enrolled in graduate or professional school:	60.3	64.3	61.4	65.1	64.5	4.9	45.4	80.0	78.5	69.9	53.6	55.1
% of students in public schools	83.9	76.7	80.2	85.7	74.3	82.0	64.8	61.1	72.2	77.5	74.8	79.3
% of students in private schools	16.1	23.3	19.8	14.3	25.7	18.0	35.2	38.9	27.8	22.5	25.2	20.7
As % of state												
Enrolled in nursery, preschool and kindergarten:			16.2	13.5	70.3	13.1	9.7	9.8	5.9	5.8	9.7	16.4
Enrolled in grade 1 to grade 8:			16.4	14.4	69.2	13.1	10.2	7.0	4.1	6.4	9.5	18.8
Enrolled in grade 9 to grade 12:			17.3	15.1	67.6	11.5	8.9	7.5	6.0	8.3	7.9	17.5
Enrolled in college undergraduate years:			11.9	11.6	76.5	11.1	8.0	9.2	11.2	8.2	13.3	15.5
Enrolled in graduate or professional school:			7.3	3.8	88.9	2.0	9.0	9.6	29.2	8.6	18.0	12.5

Source: U.S. Census Bureau, American Community Survey (annual), Detailed Tables, http://factfinder.census.gov/servlet/DatasetMainPageServlet?_program=ACS&_submenuId=&_lang=en&_ts=>.

Table C-2. Education Attainment by Employment Status for the Population 25 to 64 years: 2005 to 2007

	U.S.	Hawaii State	Maui county, Kalawao county and Kauai county	Hawaii county	Honolulu county	Rural Oahu	Koolau-poko	Makapuu-Manoa stream	Manoa-Waikiki-Kakaako-Tantalus	Pauoa-Down-town-Kalihi	Moana-lua-Airport-Pearl City	Mililani-Waipahu-Ewa
% of total population 25-64 yrs: 2007												
Less than high school graduate:	13.0	7.0	8.2	6.5	6.8	9.7	5.1	3.8	4.2	14.3	5.4	6.7
In Armed Forces	0.0	0.0	0.0	0.0	0.0	0.0	0.0	0.0	0.0	0.0	0.0	0.0
Civilian employed	7.1	4.1	5.0	3.1	4.0	5.4	3.0	2.6	2.4	9.8	3.0	3.5
Civilian unemployed	0.8	0.3	0.4	0.3	0.2	0.6	0.2	0.0	0.0	0.2	0.1	0.3
Not in labor force	5.1	2.7	2.8	3.2	2.6	3.7	2.0	1.2	1.8	4.2	2.3	2.9
High school graduate:	29.1	28.2	31.0	31.3	26.9	37.3	31.2	18.9	24.0	28.6	26.0	25.5
In Armed Forces	0.1	0.5	0.2	0.0	0.7	1.2	0.9	0.3	0.1	0.0	0.9	1.0
Civilian employed	20.3	20.0	24.4	21.6	18.6	24.0	19.6	12.9	18.0	19.9	17.6	18.6
Civilian unemployed	1.3	1.1	1.2	1.6	1.0	1.6	1.4	0.6	1.6	0.8	0.8	0.8
Not in labor force	7.4	6.6	5.2	8.1	6.7	10.5	9.3	5.0	4.3	7.9	6.6	5.1
Some college or associate's degree:	28.5	33.5	34.5	33.2	33.3	35.1	28.7	28.0	27.7	27.4	39.4	39.4
In Armed Forces	0.2	1.9	0.0	0.4	2.6	2.5	1.9	0.4	0.3	0.1	4.9	4.9
Civilian employed	21.7	24.5	28.3	25.7	23.3	22.1	20.1	20.8	21.0	20.2	25.6	27.8
Civilian unemployed	1.1	0.8	0.5	0.7	0.9	1.6	0.6	0.4	0.6	0.8	1.3	0.8
Not in labor force	5.6	6.4	5.7	6.4	6.6	8.8	6.1	6.4	5.8	6.2	7.6	5.9
Bachelor's degree or higher:	29.4	31.3	26.3	29.0	32.9	17.9	34.9	49.3	44.1	29.8	29.2	28.4
In Armed Forces	0.1	1.1	0.0	0.0	1.5	1.3	1.4	0.4	1.2	0.3	3.2	2.0
Civilian employed	24.3	24.8	22.1	23.3	25.7	12.2	28.3	40.8	32.9	24.6	21.9	21.9
Civilian unemployed	0.6	0.5	0.3	0.6	0.6	0.4	0.6	0.5	1.4	0.8	0.6	0.3
Not in labor force	4.3	4.9	3.9	5.0	5.1	4.0	4.6	7.6	8.6	4.1	3.6	4.3
% of total population 25-64 yrs: 2006												
Less than high school graduate:	13.3	7.1	7.9	5.7	7.1	10.0	3.6	3.0	5.9	20.2	5.8	4.7
In Armed Forces	0.0	0.0	0.0	0.0	0.1	0.0	0.1	0.0	0.0	0.0	0.2	0.0
Civilian employed	7.3	3.9	5.5	3.6	3.6	3.8	2.4	1.2	4.1	10.8	2.8	2.3
Civilian unemployed	0.8	0.3	0.1	0.6	0.4	0.3	0.1	0.3	0.3	1.0	0.2	0.5
Not in labor force	5.2	2.7	2.4	1.5	3.1	6.0	1.0	1.6	1.5	8.5	2.5	1.9
High school graduate:	29.2	28.2	31.8	32.2	26.6	41.3	25.1	16.8	21.5	29.1	25.1	27.6
In Armed Forces	0.1	0.5	0.0	0.0	0.8	1.8	0.6	0.0	0.0	0.0	2.3	0.6
Civilian employed	20.4	19.9	23.7	24.2	18.1	28.3	17.2	12.5	16.0	18.8	15.7	18.8
Civilian unemployed	1.3	1.0	1.0	0.6	1.1	2.5	1.5	0.3	0.6	1.9	0.3	0.9
Not in labor force	7.3	6.8	7.1	7.4	6.6	8.7	5.7	4.1	4.8	8.4	6.7	7.3
Some college or associate's degree:	28.6	32.7	33.7	33.5	32.3	29.5	34.4	26.6	28.4	23.6	37.1	38.6
In Armed Forces	0.2	1.3	0.0	0.0	1.9	1.7	2.0	0.1	0.9	0.4	4.9	2.4
Civilian employed	21.7	24.5	28.2	25.7	23.4	20.3	24.5	20.5	21.2	18.1	24.9	28.3
Civilian unemployed	1.1	0.9	0.6	1.2	0.9	1.1	0.9	1.0	0.5	0.8	1.0	0.9
Not in labor force	5.6	6.0	4.9	6.6	6.1	6.4	7.1	5.2	5.8	4.3	6.3	7.0
Bachelor's degree or higher:	28.9	32.0	26.6	28.6	34.0	19.2	36.9	53.5	44.2	27.1	32.0	29.1
In Armed Forces	0.1	1.1	0.0	0.0	1.6	1.8	2.1	0.2	0.4	0.1	3.1	2.4
Civilian employed	23.8	26.0	23.1	22.7	27.3	15.2	29.1	44.1	37.5	22.8	23.0	23.2
Civilian unemployed	0.7	0.5	0.1	0.7	0.5	0.2	0.5	0.2	1.2	1.1	0.5	0.3
Not in labor force	4.3	4.4	3.4	5.3	4.5	2.0	5.2	9.0	5.1	3.1	5.5	3.1

Continued on next page.

Table C-2. Education Attainment by Employment Status for the Population 25 to 64 years: 2005 to 2007 -Con.

	U.S.	Hawaii State	Maui county, Kalawao county and Kauai county	Hawaii county	Honolulu county	Rural Oahu	Koolau-poko	Makapuu-Manoa stream	Manoa-Waikiki-Kakaako-Tantalus	Pauoa-Down-town-Kalihi	Moana-lua-Airport-Pearl City	Mililani-Waipahu-Ewa
% of total population 25-64 yrs: 2005												
Less than high school graduate:	13.1	8.0	8.6	7.7	7.9	10.6	3.9	3.9	6.2	17.3	6.4	8.4
In Armed Forces	0.0	0.0	0.0	0.0	0.0	0.0	0.0	0.0	0.0	0.0	0.0	0.0
Civilian employed	7.3	4.8	6.4	4.4	4.4	4.3	1.8	2.1	2.8	10.8	4.0	5.2
Civilian unemployed	0.9	0.2	0.2	0.0	0.2	0.6	0.2	0.0	0.3	0.1	0.2	0.1
Not in labor force	4.9	3.1	2.0	3.3	3.3	5.7	1.9	1.8	3.1	6.4	2.3	3.2
High school graduate:	28.5	29.3	33.1	34.9	27.3	41.3	27.4	19.5	22.1	28.5	27.2	27.5
In Armed Forces	0.1	0.4	0.0	0.0	0.6	1.7	1.0	0.1	0.3	0.0	0.9	0.5
Civilian employed	20.0	20.8	25.5	24.8	18.9	28.3	19.7	11.8	15.3	19.4	18.0	20.3
Civilian unemployed	1.4	0.9	1.1	1.2	0.8	1.0	0.7	0.6	0.7	0.2	0.7	1.1
Not in labor force	7.0	7.2	6.5	8.8	7.0	10.3	5.9	7.0	5.8	8.9	7.5	5.6
Some college or associate's degree:	29.2	32.4	33.6	31.8	32.2	32.0	32.9	26.7	29.9	26.6	36.7	36.1
In Armed Forces	0.2	1.1	0.2	0.0	1.5	1.5	1.0	0.0	0.4	0.3	3.7	2.4
Civilian employed	22.0	23.8	27.6	22.8	23.1	20.3	24.0	20.4	23.7	20.0	24.7	25.4
Civilian unemployed	1.2	0.8	1.0	0.7	0.8	1.3	1.1	0.2	1.4	0.3	0.6	0.8
Not in labor force	5.8	6.7	4.8	8.2	6.8	8.9	6.8	6.1	4.4	5.9	7.7	7.5
Bachelor's degree or higher:	29.2	30.3	24.7	25.6	32.5	16.2	35.8	49.8	41.8	27.7	29.6	28.0
In Armed Forces	0.1	1.0	0.1	0.0	1.5	1.0	2.2	0.2	0.4	0.5	2.8	2.1
Civilian employed	23.8	23.9	20.7	19.8	25.5	11.7	28.6	42.6	32.5	21.8	21.2	21.5
Civilian unemployed	0.7	0.7	0.6	0.5	0.7	0.9	0.7	0.6	1.0	0.6	0.6	0.5
Not in labor force	4.5	4.7	3.3	5.3	4.9	2.5	4.2	6.4	8.0	4.9	5.0	3.8

Source: U.S. Census Bureau, American Community Survey (annual), Detailed Tables, http://factfinder.census.gov/servlet/DatasetMainPageServlet?_program=ACS&_submenuid=&_lang=en&_ts=>.

Table C-3. Characteristics of Public School Students: 2005-06 to 2007-08

	Dropout rate % (4-year rate)				Retention rate 9th grade %				Graduate on-time %				Free & reduced-cost lunch program %				English second language learners %			
	2005- 2006	2006- 2007	2007- 2008	07-08 Rank	2005- 2006	2006- 2007	2007- 2008	07-08 Rank	2005- 2006	2006- 2007	2007- 2008	07-08 Rank	2005- 2006	2006- 2007	2007- 2008	07-08 Rank	2005- 2006	2006- 2007	2007- 2008	07-08 Rank
Baldwin Complex	14.2	13.1	13.5	18	11.6	12.4	10.3	26	83.9	85.0	85.9	17	30.0	28.5	30.4	30	5.4	6.1	7.1	21
Maui Complex	15.5	19.1	17.1	10	12.6	12.4	14.2	18	82.0	78.8	79.7	31	37.5	34.5	33.7	28	11.2	13.7	16.2	7
Kekaulike Complex	20.5	16.9	12.0	19	7.5	11.9	13.0	20	78.0	78.7	83.9	23	37.9	34.0	31.3	29	1.9	2.0	2.8	39
Hana Complex	12.0	14.7	13.6	16	40.5	13.6	14.3	17	80.0	78.8	81.8	28	63.5	59.9	49.2	12	0.0	0.0	0.0	42
Lahainaluna Complex	12.1	17.6	15.3	12	13.5	16.5	16.0	12	84.7	79.4	82.3	27	30.1	27.7	27.9	35	18.4	19.5	22.8	5
Lanai Complex	2.5	0.0	4.8	39	2.2	8.0	0.0	42	95.0	97.8	95.2	3	21.9	24.0	24.3	38	11.0	12.5	12.9	8
Molokai Complex	15.5	10.1	5.1	37	2.0	3.0	4.3	38	84.5	88.8	94.9	4	64.6	59.6	64.0	4	3.0	3.6	4.4	34
Kapaa Complex	8.4	11.5	5.6	36	11.3	14.8	14.8	16	88.7	80.6	88.3	13	40.9	39.0	39.1	21	4.8	5.0	5.6	29
Kauai Complex	13.4	10.5	11.2	24	7.5	15.9	15.1	13	83.4	86.2	85.4	19	32.5	31.7	29.5	32	5.6	6.1	6.7	25
Waimea Complex	5.8	10.8	15.9	11	10.8	7.9	4.5	37	92.1	84.3	83.5	24	42.3	39.6	38.3	24	7.5	6.8	6.8	23
Hilo Complex	10.9	13.6	11.8	20	15.6	11.4	9.9	27	77.6	81.5	80.7	29	53.1	51.2	50.2	11	6.1	5.3	6.3	26
Laupahoehoe Complex	0.0	6.7	0.0	41	6.3	4.3	8.3	32	100.0	93.3	100.0	1	56.0	53.7	55.5	9	11.6	10.6	12.0	11
Waiakea Complex	4.0	8.4	6.8	33	10.2	11.5	13.3	19	89.5	90.0	89.9	10	41.0	38.5	38.8	22	4.1	4.5	4.9	33
Kau Complex	9.6	2.4	11.3	23	5.3	7.6	2.9	39	84.6	90.5	84.9	21	66.5	61.3	66.8	2	21.3	22.1	22.9	4
Keaau Complex	13.0	12.4	14.1	14	4.5	23.3	22.9	2	82.0	81.8	78.2	32	69.7	66.9	64.7	3	7.1	8.8	9.5	15
Pahoa Complex	7.8	10.6	11.6	22	6.7	9.4	9.8	28	85.3	85.9	80.0	30	72.3	71.0	68.1	1	7.7	8.5	10.6	12
Honokaa Complex	4.3	8.7	10.9	27	5.3	4.9	6.2	35	89.7	84.3	82.9	26	44.5	41.1	40.7	20	5.6	5.5	7.1	21
Kealakehe Complex	15.0	18.9	18.2	8	2.4	5.4	1.1	41	75.1	71.7	74.7	38	37.9	38.3	38.8	22	10.2	11.1	12.8	9
Kohala Complex	7.3	5.0	0.0	41	4.8	5.6	2.9	39	87.3	95.0	100.0	1	48.7	43.7	47.2	17	5.4	6.1	5.9	27
Konawaena Complex	12.6	14.9	13.6	16	12.2	12.8	12.7	21	74.2	77.0	75.5	35	49.1	46.6	43.5	19	9.5	10.1	12.2	10
Leilehua Complex	10.3	13.8	11.0	26	10.8	11.2	10.7	24	87.5	82.3	85.3	20	47.7	48.2	45.3	18	8.6	8.4	8.5	18
Waialua Complex	11.8	13.4	13.9	15	7.5	1.2	10.5	25	85.0	86.6	84.2	22	52.0	51.6	49.2	12	9.8	9.6	9.3	16
Kahuku Complex	9.4	8.2	8.3	30	19.5	8.1	6.8	33	86.2	88.7	88.6	12	51.0	49.1	48.3	15	5.9	6.0	5.9	27
Nanakuli Complex	22.0	31.1	28.6	2	30.7	20.9	20.3	5	74.8	67.8	67.3	41	65.1	65.0	63.0	6	3.9	4.0	4.3	35
Waianae Complex	31.6	27.1	30.6	1	26.4	20.9	19.6	7	60.9	67.1	64.2	42	70.0	66.1	58.9	8	5.6	5.0	5.6	29
Kalaheo Complex	10.6	18.2	14.7	13	9.6	13.3	11.4	22	86.2	80.8	83.1	25	30.9	29.9	29.5	32	2.9	3.3	3.7	37
Castle Complex	13.2	19.3	18.6	7	21.9	24.7	21.7	4	81.9	77.0	74.9	36	37.1	37.1	35.7	26	2.7	2.4	2.7	40
Kailua Complex	17.5	19.4	17.2	9	17.6	22.5	14.9	14	79.5	78.7	77.9	33	46.9	49.1	48.4	14	3.6	3.6	4.1	36
Kaiser Complex	8.8	16.7	5.1	37	10.8	14.3	14.9	14	91.2	83.3	92.9	7	10.3	10.9	10.9	42	4.1	5.1	5.1	32
Kalani Complex	6.1	7.1	6.6	34	13.3	12.2	9.6	30	90.8	92.5	88.2	14	15.4	16.0	16.5	40	6.8	7.9	10.5	13
Kaimuki Complex	18.7	22.7	20.4	5	22.9	18.6	32.0	1	76.8	74.9	74.8	37	50.8	48.9	47.9	16	18.2	20.8	23.1	3
Roosevelt Complex	14.3	8.0	8.1	31	14.6	20.2	17.2	11	80.1	87.0	89.3	11	29.2	28.9	29.6	31	5.4	6.0	8.0	19
McKinley Complex	23.7	25.5	27.6	3	31.0	26.3	22.8	3	73.4	73.0	70.0	40	62.2	59.1	59.0	7	22.2	24.4	25.6	2
Farrington Complex	20.9	19.7	19.0	6	32.1	23.6	20.1	6	72.3	74.2	75.7	34	66.7	66.1	63.9	5	21.2	23.2	27.0	1
Moanalua Complex	5.6	4.7	4.8	39	9.4	8.0	8.5	31	93.4	92.3	93.0	6	20.4	20.4	19.3	39	6.7	7.1	7.5	20
Radford Complex	8.6	8.2	8.9	29	7.6	10.7	6.4	34	90.7	90.6	90.0	9	29.7	27.3	28.2	34	5.9	6.5	6.8	23
Aiea Complex	8.4	8.5	11.1	25	15.8	18.8	18.1	9	91.2	89.9	87.4	16	36.7	34.8	34.9	27	10.2	10.3	10.1	14
Pearl City Complex	11.2	11.7	7.5	32	16.5	14.9	11.3	23	84.3	84.3	90.4	8	27.7	28.4	26.9	36	5.2	5.3	5.6	29
Waipahu Complex	20.5	23.4	24.3	4	18.1	15.0	17.6	10	74.4	71.9	73.3	39	50.5	50.9	50.5	10	20.6	21.3	21.4	6
Mililani Complex	6.0	7.3	5.7	35	7.8	10.4	9.8	28	92.7	91.6	93.5	5	14.8	13.3	13.8	41	2.1	2.4	2.3	41
Campbell Complex	12.4	13.8	11.7	21	7.3	4.6	5.8	36	85.3	81.6	85.8	18	39.1	38.8	36.3	25	10.0	9.5	8.9	17
Kapolei Complex	6.5	12.4	10.3	28	19.5	21.2	18.7	8	87.2	84.8	87.6	15	28.0	29.2	26.2	37	3.4	3.2	3.6	38

Source: Hawaii State Department of Education, *Trend Report: Educational and Fiscal Accountability*,
<http://arch.k12.hi.us/school/trends/trends.html#>>.

**Table C-4. Percent of 10th Graders with Terra Nova Test at Average or Above:
2005-06 to 2007-08**

	Terra Nova 10th graders reading score average or above				Terra Nova 10th graders reading score average or above			
	2005- 2006 1/	2006- 2007	2007- 2008	07-08 Rank	2005- 2006 1/	2006- 2007	2007- 2008	07-08 Rank
Baldwin Complex	N/A	79.8	81.6	11	N/A	75.3	74.7	19
Mauai Complex	N/A	75.2	78.2	20	N/A	76.5	73.7	22
Kekaulike Complex	N/A	81.5	77.2	25	N/A	70.0	70.8	31
Hana Complex	N/A	85.2	83.3	6	N/A	76.9	70.8	31
Lahainaluna Complex	N/A	78.7	77.5	23	N/A	72.1	72.2	25
Lanai Complex	N/A	80.0	84.4	3	N/A	84.4	75.6	18
Molokai Complex	N/A	62.4	65.6	39	N/A	67.1	71.1	29
Kapaa Complex	N/A	79.0	78.3	19	N/A	77.9	71.1	29
Kauai Complex	N/A	86.1	82.4	9	N/A	81.0	82.0	8
Waimea Complex	N/A	84.5	76.6	27	N/A	80.7	86.3	4
Hilo Complex	N/A	69.7	70.4	33	N/A	63.7	67.7	35
Laupahoehoe Complex	N/A	71.4	60.0	41	N/A	71.4	57.1	39
Waiakea Complex	N/A	78.7	83.7	4	N/A	77.3	77.7	16
Kau Complex	N/A	79.0	69.7	34	N/A	64.4	50.0	42
Keaau Complex	N/A	71.4	77.8	21	N/A	24.8	59.0	37
Pahoa Complex	N/A	80.7	64.1	40	N/A	71.1	54.4	40
Honokaa Complex	N/A	75.4	80.8	12	N/A	70.6	63.4	36
Kealakehe Complex	N/A	83.6	83.2	7	N/A	82.4	71.2	28
Kohala Complex	N/A	76.6	69.4	36	N/A	72.7	69.4	33
Konawaena Complex	N/A	77.3	79.7	14	N/A	74.5	74.2	20
Leilehua Complex	N/A	86.2	83.4	5	N/A	77.9	80.6	10
Waialua Complex	N/A	78.9	77.7	22	N/A	77.8	78.5	15
Kahuku Complex	N/A	79.8	77.5	23	N/A	76.8	78.9	14
Nanakuli Complex	N/A	62.8	55.0	42	N/A	60.7	53.8	41
Waianae Complex	N/A	62.0	68.0	37	N/A	46.6	58.5	38
Kalaheo Complex	N/A	85.5	82.1	10	N/A	83.3	84.2	6
Castle Complex	N/A	81.2	79.6	15	N/A	79.7	85.1	5
Kailua Complex	N/A	72.2	71.5	32	N/A	73.4	72.7	23
Kaiser Complex	N/A	83.1	79.8	13	N/A	88.9	82.5	7
Kalani Complex	N/A	86.8	88.6	2	N/A	90.4	89.7	1
Kaimuki Complex	N/A	62.9	69.5	35	N/A	60.2	68.0	34
Roosevelt Complex	N/A	83.7	83.2	7	N/A	85.0	88.2	3
McKinley Complex	N/A	77.8	75.1	31	N/A	84.3	80.1	12
Farrington Complex	N/A	66.6	65.7	38	N/A	66.0	71.5	27
Moanalua Complex	N/A	82.8	75.8	29	N/A	83.6	79.8	13
Radford Complex	N/A	82.8	79.6	15	N/A	79.9	80.4	11
Aiea Complex	N/A	76.9	77.0	26	N/A	79.7	81.4	9
Pearl City Complex	N/A	74.9	76.4	28	N/A	75.5	76.3	17
Waipahu Complex	N/A	68.3	75.7	30	N/A	71.1	72.0	26
Mililani Complex	N/A	87.8	89.5	1	N/A	86.9	88.5	2
Campbell Complex	N/A	75.0	79.1	17	N/A	75.7	72.3	24
Kapolei Complex	N/A	83.4	78.5	18	N/A	74.4	74.1	21

1/ Terra Nova replaced the Stanford Achievement Test in 2007. These two test results are not comparable.

Source: Hawaii State Department of Education, *Trend Report: Educational and Fiscal Accountability*,
<<http://arch.k12.hi.us/school/trends/trends.html#>>.

D. Housing and Vehicles

Homeownership was higher in Makapuu-Manoa stream (69.6% in PUMA 303), Hawaii County (68.4% in PUMA 200) and Mililani-Waipahu-Ewa (68.3% in PUMA 307) than the national average of 67.2% in 2007 (Table D-2). Renter occupied units dominated in Manoa-Waikiki-Kakaako-Tantalus (PUMA 304) and Pauoa-Downtown-Kalihi (PUMA 305). About 59.1% of housing units in PUMA 304 and 52.7% of those in PUMA 305 were renter occupied in 2007. These two areas also reported lower rates of vehicle ownership, especially with respect to 3 or more vehicles (Table D-1). These areas are generally closer to shopping centers, schools and businesses on Oahu, and are the most crowded areas with respect to parking.

PUMA 304, Manoa-Waikiki-Kakaako-Tantalus had more studio units (13.1% in 2005 and 2007, 13.4% in 2006) and one bedroom units (39.5% in 2005, 38.7% in 2006 and 37.1% in 2007) in condominium/apartments (Table D-1). Therefore, the monthly gross rent in this area was relatively lower (Table D-4). PUMA 304 was dominated by apartments /condominiums rather than single family homes. Nearly 66 percent of structures had 20 or more units in PUMA 304 in 2007 while the single family home is the more common type of structure in suburbs and rural areas in Hawaii. Mobile homes were rarely situated in any areas of Hawaii, while almost 7 percent of the housing units in the U.S. were mobile homes in the past three years (Table D-1).

Hawaii had higher homeowner costs than the U.S. on average. In 2007, more than 50% of the homeowners in Hawaii paid monthly fees of \$2,000 or more, as compared with only 28.9 percent paying this amount or more at the U.S level. Homeowner costs on the Big Island were less than other islands in the state, with 34.7 percent of homeowners on that island paying \$2,000 or more per month (Table D-3). Monthly homeowner costs include mortgage payments, deeds of trust, contracts to purchase, or similar debts on the property, property taxes, fire, hazard and flood insurance, utilities and fuels, the monthly maintenance fee for condominiums and mobile home costs. High mortgage payments were probably the primary cause of higher monthly homeowner costs in Hawaii.

The median monthly homeowner cost in Hawaii was \$2,099 in 2007, as compared with \$1,464 for the U.S. The median homeowner cost in PUMA 302 (Koolaupoko) was \$2,498 per month and PUMA 303 (Makapuu-Manoa Stream) was \$2,481 per month in 2007, the two highest areas in the state, while the median homeowner cost on the Big Island was the lowest in the state at \$1,612 per month (Table D-3).

The median monthly rent in Hawaii was \$1,194 in 2007, 51.3% higher than the U.S. average. PUMA 306 (Moanalua-Airport-Pearl City) had the highest median rent at \$1,629 per month in 2007, while Pauoa-Downtown-Kalihi had the lowest median rent at \$880 per month (Table D-4).

Table D-1. Housing Characteristics: 2005 to 2007 (% of total housing units)

	U.S.	State	Maui county, Kalawao county and Kauai county	Hawaii county	Honolulu county	Rural Oahu	Koolau-poko	Makapuu-Manoa stream	Manoa-Waikiki-Kakaako-Tantalus	Pauoa-Down-town-Kalihi	Moana-lua-Airport-Pearl City	Millani-Waipahu-Ewa
UNITS IN STRUCTURE 2007												
1-unit, detached	61.7	54.0	61.5	77.1	46.6	58.6	66.3	69.6	11.6	36.0	43.5	58.9
1-unit, attached	5.7	6.7	4.4	1.8	8.5	11.9	11.4	7.8	2.0	8.3	14.4	8.3
2 units	4.0	2.4	4.0	2.0	2.1	4.8	1.9	2.2	1.9	1.2	2.7	1.0
3 or 4 units	4.5	4.3	3.3	2.6	5.0	3.9	7.3	3.1	3.5	6.1	5.5	5.9
5 to 9 units	4.9	7.1	5.9	5.4	7.9	6.9	5.3	3.3	5.2	6.5	8.7	15.7
10 to 19 units	4.5	5.4	6.3	4.1	5.5	4.1	2.9	2.5	10.1	7.5	3.3	5.1
20 or more units	7.9	19.8	14.4	6.6	24.4	9.6	4.7	11.3	65.8	34.1	21.5	5.0
Mobile home	6.7	0.2	0.4	0.5	0.1	0.0	0.1	0.1	0.0	0.1	0.3	0.1
Boat, RV, van, etc.	0.1	0.0	0.0	0.0	0.1	0.3	0.0	0.0	0.0	0.1	0.0	0.1
2006												
1-unit, detached	61.4	53.7	61.3	76.0	46.5	56.8	66.0	69.5	13.1	34.4	44.8	56.7
1-unit, attached	5.7	6.8	6.3	3.1	7.8	10.4	12.0	7.5	1.7	9.4	12.7	6.1
2 units	4.0	2.9	3.4	2.7	2.9	6.2	2.0	2.1	0.9	4.7	4.2	2.2
3 or 4 units	4.6	5.2	2.9	4.8	5.9	4.8	5.2	5.1	5.4	3.9	5.7	9.2
5 to 9 units	4.9	6.4	5.7	4.3	7.0	6.1	4.1	3.2	5.8	5.7	5.4	14.6
10 to 19 units	4.5	4.9	5.7	2.5	5.2	4.0	1.8	1.0	10.9	6.7	3.2	5.4
20 or more units	7.9	19.9	14.7	6.3	24.4	11.4	8.8	11.7	62.2	34.6	23.8	5.6
Mobile home	6.9	0.2	0.0	0.2	0.2	0.3	0.0	0.0	0.1	0.6	0.1	0.3
Boat, RV, van, etc.	0.1	0.0	0.0	0.1	0.1	0.0	0.1	0.0	0.1	0.0	0.1	0.0
2005												
1-unit, detached	61.1	53.5	61.2	76.1	46.5	55.6	71.7	69.8	11.2	32.5	44.8	59.5
1-unit, attached	5.7	6.0	4.7	2.1	7.2	8.9	8.3	8.2	1.7	9.7	10.6	6.8
2 units	4.0	2.8	2.8	2.9	2.9	4.5	1.8	3.1	2.4	4.1	1.5	3.2
3 or 4 units	4.6	4.8	3.5	3.8	5.4	10.0	4.3	2.7	3.3	3.5	7.1	7.4
5 to 9 units	5.0	7.0	7.0	4.2	7.6	5.4	4.9	3.0	8.2	7.6	7.8	12.6
10 to 19 units	4.5	5.4	5.1	2.7	6.1	5.4	2.3	2.9	11.0	7.6	5.0	5.5
20 or more units	8.0	20.1	15.7	7.6	24.0	10.1	6.3	10.3	61.8	34.4	22.6	5.1
Mobile home	7.0	0.2	0.1	0.7	0.1	0.0	0.4	0.0	0.1	0.2	0.1	0.0
Boat, RV, van, etc.	0.1	0.1	0.0	0.1	0.2	0.0	0.0	0.0	0.3	0.5	0.4	0.0

Continued on next page.

Table D-1. Housing Characteristics: 2005 to 2007 (% of total housing units) -Con.

	U.S.	State	Maui county, Kalawao county and Kauai county	Hawaii county	Honolulu county	Rural Oahu	Koolau-poko	Makapuu-Manoa stream	Manoa-Waikiki-Kakaako-Tantalus	Pauoa-Down-town-Kalihi	Moana-lua-Airport-Pearl City	Mililani-Waipahu-Ewa
BEDROOMS												
2007												
No bedroom	1.3	4.2	3.5	4.9	4.3	2.9	1.8	0.9	13.1	4.8	1.6	1.0
1 bedroom	11.5	15.2	15.9	10.2	16.2	11.6	3.5	12.6	37.1	26.0	10.4	5.2
2 bedrooms	27.5	26.8	28.9	23.7	26.9	23.1	20.5	18.6	35.7	29.6	30.2	25.1
3 bedrooms	40.0	34.5	37.2	44.3	31.5	39.2	47.0	35.3	8.6	21.6	37.0	41.9
4 bedrooms	15.7	13.4	11.4	13.4	14.0	18.2	18.6	22.0	2.5	7.6	14.3	19.5
5 or more bedrooms	3.9	5.8	3.2	3.6	7.0	4.9	8.6	10.7	2.9	10.4	6.6	7.4
2006												
No bedroom	1.3	4.6	3.7	4.6	4.8	3.4	1.4	2.6	13.4	5.9	2.5	1.6
1 bedroom	11.8	14.5	14.9	12.0	15.0	8.4	6.7	6.6	38.7	23.1	7.9	5.6
2 bedrooms	27.8	27.6	29.5	25.7	27.5	26.3	17.2	19.5	34.9	32.0	31.5	26.2
3 bedrooms	39.8	35.3	39.3	42.6	32.5	39.0	43.6	39.4	8.1	19.8	38.9	45.0
4 bedrooms	15.5	12.8	8.2	11.7	14.3	16.3	22.9	20.5	2.7	10.1	15.8	17.0
5 or more bedrooms	3.9	5.3	4.4	3.4	5.9	6.5	8.2	11.5	2.2	9.1	3.4	4.6
2005												
No bedroom	1.3	5.1	4.6	7.4	4.8	3.8	1.4	1.2	13.1	6.8	2.6	1.2
1 bedroom	12.0	15.3	18.3	7.8	16.1	13.7	4.2	8.6	39.5	23.8	9.7	4.6
2 bedrooms	28.2	26.6	27.8	23.5	27.0	22.6	15.0	21.2	33.7	32.2	31.2	26.4
3 bedrooms	39.7	34.3	35.5	46.0	31.4	38.1	49.8	38.1	8.4	18.9	34.1	42.9
4 bedrooms	15.2	12.5	9.7	10.0	13.8	14.6	21.3	21.2	2.3	8.5	15.0	18.6
5 or more bedrooms	3.7	6.2	4.0	5.3	6.9	7.3	8.3	9.7	3.0	9.8	7.4	6.2

Continued on next page.

Table D-1. Housing Characteristics: 2005 to 2007 (% of total housing units) -Con.

	U.S.	State	Maui county, Kalawao county and Kauai county	Hawaii county	Honolulu county	Rural Oahu	Koolau-poko	Makapuu-Manoa stream	Manoa-Waikiki-Kakaako-Tantalus	Pauoa-Down-town-Kalihi	Moana-lua-Airport-Pearl City	Mililani-Waipahu-Ewa
YEAR STRUCTURE BUILT												
2007												
Built 2005 or later	3.3	3.1	2.9	3.6	3.1	1.7	1.1	3.2	1.8	0.8	5.0	6.3
Built 2000 to 2004	8.6	6.4	7.1	9.7	5.4	5.4	3.1	5.0	2.2	0.8	4.2	13.7
Built 1990 to 1999	13.9	13.1	18.9	16.6	10.6	8.7	5.7	6.7	5.7	7.7	5.6	27.0
Built 1980 to 1989	14.3	14.7	21.6	21.1	11.3	9.7	13.5	8.6	7.5	8.9	13.9	16.1
Built 1970 to 1979	16.6	27.6	28.6	26.1	27.6	28.9	26.5	17.3	37.6	25.8	33.7	20.7
Built 1960 to 1969	11.5	16.2	9.0	9.9	19.7	19.3	25.8	19.5	23.7	18.2	22.5	11.0
Built 1950 to 1959	11.4	9.5	4.2	3.8	12.3	13.5	17.7	18.6	12.1	17.1	9.5	4.2
Built 1940 to 1949	5.8	4.5	2.6	3.5	5.3	7.1	4.0	9.3	5.2	10.5	3.6	0.9
Built 1939 or earlier	14.5	4.9	4.9	5.8	4.7	5.7	2.6	11.8	4.1	10.3	2.0	0.3
2006												
Built 2005 or later	1.8	1.4	1.9	1.6	1.2	0.8	0.1	1.5	0.3	0.0	1.8	2.8
Built 2000 to 2004	8.6	6.3	8.5	8.4	5.2	2.8	2.7	3.7	1.2	2.0	4.7	14.7
Built 1990 to 1999	14.3	14.5	19.2	22.3	11.5	8.8	6.5	8.4	6.3	8.3	7.7	26.8
Built 1980 to 1989	14.5	15.2	20.6	22.2	12.1	12.2	11.3	8.5	8.0	12.4	13.0	17.9
Built 1970 to 1979	16.8	26.7	28.7	23.1	27.0	26.4	22.3	22.2	38.0	24.6	31.6	20.0
Built 1960 to 1969	11.7	15.9	8.0	8.0	19.8	19.7	25.1	18.9	23.7	21.5	22.4	10.9
Built 1950 to 1959	11.6	10.3	5.6	4.6	12.9	13.9	22.4	20.7	12.2	12.9	12.7	3.1
Built 1940 to 1949	6.0	4.8	3.0	3.2	5.7	8.0	6.4	7.3	4.9	10.7	4.5	2.2
Built 1939 or earlier	14.6	4.9	4.5	6.6	4.6	7.5	3.1	8.7	5.4	7.7	1.7	1.4
2005												
Built 2005 or later	0.5	0.4	0.4	0.3	0.4	0.6	0.0	0.9	0.1	0.2	0.2	0.7
Built 2000 to 2004	7.9	5.0	5.8	5.0	4.8	1.2	2.0	3.9	2.7	3.1	3.0	13.7
Built 1990 to 1999	14.7	14.8	19.5	21.8	11.9	11.0	6.7	9.1	8.3	5.5	7.9	28.4
Built 1980 to 1989	14.9	16.6	25.1	26.8	12.1	13.1	16.4	8.3	8.9	11.2	11.6	15.7
Built 1970 to 1979	17.3	26.4	27.0	20.8	27.5	33.5	18.1	22.7	33.1	22.4	36.9	22.6
Built 1960 to 1969	12.0	17.6	8.8	8.9	22.0	14.0	29.2	20.6	29.1	21.9	24.9	12.9
Built 1950 to 1959	11.8	10.5	6.8	4.9	12.8	13.8	21.4	16.6	9.5	20.5	11.6	4.3
Built 1940 to 1949	6.3	4.7	2.0	4.5	5.5	6.9	4.6	10.8	5.4	9.7	2.9	1.4
Built 1939 or earlier	14.7	4.0	4.7	6.9	3.1	5.8	1.7	7.1	2.8	5.6	1.2	0.4

Continued on next page.

Table D-1. Housing Characteristics: 2005 to 2007 (% of total housing units) -Con.

	U.S.	State	Maui county, Kalawao county and Kauai county	Hawaii county	Honolulu county	Rural Oahu	Koolau-poko	Makapuu-Manoa stream	Manoa-Waikiki-Kakaako-Tantalus	Pauoa-Down-town-Kalihi	Moana-lua-Airport-Pearl City	Mililani-Waipahu-Ewa
YEAR HOUSEHOLDER MOVED INTO UNIT												
2007												
Moved in 2005 or later	30.1	29.6	27.5	24.5	31.2	29.4	25.1	23.6	38.1	24.3	34.7	35.4
Moved in 2000 to 2004	25.7	23.5	25.7	25.7	22.5	23.7	20.3	19.8	25.7	21.4	18.7	25.0
Moved in 1990 to 1999	22.2	19.3	19.9	22.4	18.5	20.4	19.2	17.2	15.6	22.5	13.0	22.1
Moved in 1980 to 1989	9.8	10.6	11.6	12.2	10.0	10.1	12.3	12.6	9.1	9.0	10.6	8.1
Moved in 1970 to 1979	6.5	8.1	7.9	7.6	8.2	8.0	10.8	9.6	5.6	9.1	12.2	5.1
Moved in 1969 or earlier	5.7	9.0	7.4	7.5	9.6	8.3	12.3	17.2	5.9	13.7	10.8	4.3
2006												
Moved in 2005 or later	21.5	21.0	21.4	17.6	21.7	20.0	17.4	14.4	26.7	15.9	28.3	23.7
Moved in 2000 to 2004	31.1	29.4	31.4	32.2	28.4	28.5	24.2	24.6	32.7	28.3	23.3	33.0
Moved in 1990 to 1999	24.1	21.4	23.2	23.0	20.6	23.8	20.9	19.7	19.6	22.5	14.3	23.7
Moved in 1980 to 1989	10.4	10.7	10.0	13.2	10.4	10.6	13.8	12.6	8.0	10.9	9.3	9.4
Moved in 1970 to 1979	6.8	8.2	6.7	7.2	8.8	9.2	9.9	12.3	5.6	9.7	10.9	6.4
Moved in 1969 or earlier	6.1	9.2	7.4	6.8	10.1	8.0	13.8	16.5	7.5	12.8	13.7	3.8
2005												
Moved in 2000 or later	48.8	46.6	48.2	45.0	46.5	51.1	36.0	35.5	55.6	44.7	45.4	50.9
Moved in 1995 to 1999	16.7	13.0	12.5	14.6	12.8	14.1	12.7	12.0	13.2	10.5	10.5	15.4
Moved in 1990 to 1994	9.8	9.2	10.1	12.1	8.5	7.5	10.5	9.2	7.7	7.7	6.8	9.8
Moved in 1980 to 1989	11.0	12.8	13.8	12.6	12.6	13.4	14.9	13.6	11.5	14.0	11.8	11.0
Moved in 1970 to 1979	7.3	9.2	7.2	9.3	9.6	7.0	10.2	11.6	8.3	10.1	11.9	8.3
Moved in 1969 or earlier	6.5	9.2	8.1	6.4	10.0	6.9	15.7	18.1	3.7	13.0	13.7	4.5

Continued on next page.

Table D-1. Housing Characteristics: 2005 to 2007 -Con

	U.S.	State	Maui county, Kalawao county and Kauai county	Hawaii county	Honolulu county	Rural Oahu	Koolau-poko	Makapuu-Manoa stream	Manoa-Waikiki-Kakaako-Tantalus	Pauoa-Downtown-Kalihi	Moana-lua-Airport-Pearl City	Miilani-Waipahu-Ewa
VEHICLES AVAILABLE												
(% of households) 2007												
No vehicles available	8.7	8.5	4.5	4.1	10.3	8.7	4.7	8.2	22.7	18.8	4.5	4.0
1 vehicle available	33.1	34.2	30.4	30.1	36.0	32.5	28.2	30.8	55.1	44.2	36.5	23.7
2 vehicles available	38.1	35.4	39.7	39.1	33.6	33.5	40.4	37.4	17.3	24.0	38.1	43.7
3 or more vehicles available	20.1	21.9	25.4	26.6	20.1	25.3	26.6	23.7	4.9	13.0	20.9	28.6
(% of households) 2006												
No vehicles available	8.8	8.9	4.8	5.4	10.6	9.5	5.1	6.0	22.4	22.4	4.8	5.1
1 vehicle available	33.2	33.6	32.8	30.9	34.4	29.5	24.8	28.8	52.3	42.1	34.8	26.3
2 vehicles available	38.0	36.5	36.6	40.7	35.6	33.9	45.6	40.6	21.6	22.4	40.3	43.2
3 or more vehicles available	20.0	20.9	25.8	23.0	19.4	27.1	24.6	24.6	3.7	13.1	20.1	25.4
(% of households) 2005												
No vehicles available	8.9	8.7	4.4	5.2	10.4	6.7	3.3	7.1	22.3	21.0	4.7	4.7
1 vehicle available	33.1	34.4	29.2	31.8	36.1	35.2	26.4	27.8	55.5	42.1	36.9	24.8
2 vehicles available	38.2	35.9	42.3	41.5	33.3	31.7	41.5	40.9	17.4	24.2	38.0	41.9
3 or more vehicles available	19.8	21.0	24.1	21.4	20.2	26.4	28.8	24.1	4.8	12.8	20.3	28.6
SELECTED CHARACTERISTICS												
(% of households) 2007												
Lacking complete plumbing facilities	0.4	0.8	0.4	2.7	0.5	1.0	0.0	0.3	0.5	1.6	0.1	0.3
Lacking complete kitchen facilities	0.6	1.2	1.5	1.8	1.1	0.8	1.1	0.9	1.6	2.1	0.5	0.5
No telephone service available	5.4	5.1	4.9	3.8	5.5	9.5	4.8	2.4	6.9	6.5	5.8	4.0
(% of households) 2006												
Lacking complete plumbing facilities	0.4	0.5	0.6	1.4	0.3	0.2	0.2	0.2	0.6	0.2	0.0	0.3
Lacking complete kitchen facilities	0.6	1.3	1.4	1.4	1.3	1.1	1.0	1.9	1.8	1.7	0.7	1.0
No telephone service available	5.9	4.3	5.2	4.2	4.0	6.5	4.1	4.1	3.8	4.2	3.3	3.5
(% of households) 2005												
Lacking complete plumbing facilities	0.4	0.5	0.7	1.4	0.3	0.2	0.2	0.3	0.4	0.5	0.0	0.3
Lacking complete kitchen facilities	0.6	1.0	1.5	1.8	0.8	1.8	0.5	0.9	0.8	1.0	0.8	0.2
No telephone service available	5.2	4.4	5.0	4.9	4.1	8.5	3.1	1.9	6.1	5.6	1.9	3.1

Source: U.S. Census Bureau, American Community Survey (annual), Housing Characteristics <http://factfinder.census.gov/servlet/DatasetMainPageServlet?_program=ACS&_submenuId=&_lang=en&_ts=> calculations by the Hawaii State Department of Business, Economic Development & Tourism.

Table D-2. Housing Occupancy: 2005 to 2007

	U.S.	State	Maui county, Kalawao county and Kauai county	Hawaii county	Honolulu county	Rural Oahu	Koolau-poko	Makapuu-Manoa-stream	Manoa-Waikiki-Kakaako-Tantalus	Pauoa-Down-town-Kalihi	Moana-lua-Airport-Pearl City	Miliani-Waipahu-Ewa
HOUSING OCCUPANCY												
2007												
Occupied housing units (% of total units)	87.9	86.8	76.2	81.5	91.0	86.6	92.6	93.3	80.9	94.5	94.7	96.7
Owner-occupied (% of occupied units)	67.2	59.6	62.6	68.4	57.0	51.4	64.8	69.6	40.9	47.3	54.9	68.3
Renter-occupied (% of occupied units)	32.8	40.4	37.4	31.6	43.0	48.6	35.2	30.4	59.1	52.7	45.1	31.7
Vacant housing units (% of total units)	12.1	13.2	23.8	18.5	9.0	13.4	7.4	6.7	19.1	5.5	5.3	3.3
Homeowner vacancy rate (% of owner-occupied)	2.5	1.2	1.5	1.3	1.1	1.2	2.4	2.1	0.9	0.8	0.6	0.3
(% of renter-occupied)	7.9	9.9	24.9	13.7	5.3	6.5	3.8	3.6	8.3	4.4	4.4	3.2
Average household size of owner-occupied unit (persons)	2.7	3.0	3.0	2.7	3.1	3.4	3.2	2.8	2.0	3.2	3.1	3.5
Average household size of renter-occupied unit (persons)	2.4	2.6	2.5	2.5	2.7	3.6	3.2	2.3	1.8	2.4	3.1	3.1
2006												
Occupied housing units (% of total units)	88.4	86.5	76.2	84.0	89.9	85.5	94.7	92.3	79.7	93.2	91.1	95.4
Owner-occupied (% of occupied units)	67.3	59.5	60.9	65.0	58.1	53.9	68.5	74.3	38.2	47.4	52.5	70.1
Renter-occupied (% of occupied units)	32.7	40.5	39.1	35.0	41.9	46.1	31.5	25.7	61.8	52.6	47.5	29.9
Vacant housing units (% of total units)	11.6	13.5	23.8	16.0	10.1	14.5	5.3	7.7	20.3	6.8	8.9	4.6
Homeowner vacancy rate (% of owner-occupied)	2.2	1.1	1.9	1.0	0.9	0.1	0.0	0.7	2.5	0.0	0.9	1.4
(% of renter-occupied)	7.7	6.1	11.2	6.7	4.7	4.2	1.2	3.1	7.3	4.7	6.9	0.9
Average household size of owner-occupied unit (persons)	2.7	3.0	3.2	2.7	3.1	4.1	3.2	3.0	2.1	3.3	2.9	3.3
Average household size of renter-occupied unit (persons)	2.4	2.7	2.5	2.7	2.7	3.4	3.0	2.6	1.8	2.7	3.0	3.2
2005												
Occupied housing units (% of total units)	89.2	87.6	77.9	82.6	91.3	85.9	96.2	91.5	84.0	95.2	94.0	94.4
Owner-occupied (% of occupied units)	66.9	59.7	62.1	67.2	57.6	50.9	68.2	72.5	37.9	45.9	56.4	72.3
Renter-occupied (% of occupied units)	33.1	40.3	37.9	32.8	42.4	49.1	31.8	27.5	62.1	54.1	43.6	27.7
Vacant housing units (% of total units)	10.8	12.4	22.1	17.4	8.7	14.1	3.8	8.5	16.0	4.8	6.0	5.6
Homeowner vacancy rate (% of owner-occupied)	1.7	0.9	1.3	1.9	0.6	0.6	0.0	1.2	0.8	0.9	0.0	0.6
(% of renter-occupied)	7.7	4.7	4.0	8.3	4.3	1.9	2.9	1.0	4.4	4.2	6.5	6.0
Average household size of owner-occupied unit (persons)	2.7	3.0	3.0	2.9	3.1	4.0	3.3	2.8	2.0	3.4	2.9	3.4
Average household size of renter-occupied unit (persons)	2.4	2.6	2.7	2.6	2.6	3.5	3.0	2.7	1.9	2.4	2.9	3.2

Source: U.S. Census Bureau, American Community Survey (annual), Housing Characteristics <http://factfinder.census.gov/servlet/DatasetMainPageServlet?_program=ACS&_submenuId=&_lang=en&_ts=> calculations by the Hawaii State Department of Business, Economic Development & Tourism.

Table D-3. Selected Monthly Owner Costs for the Housing Units with a Mortgage: 2005 to 2007

	U.S.	State	Maui county, Kalawao county and Kauai county	Hawaii county	Honolulu county	Rural Oahu	Koolau-poko	Makapuu-Manoa stream	Manoa-Waikiki-Kakaako-Tantalus	Pauoa-Downtown-Kalihi	Moana-lua-Airport-Pearl City	Mililani-Waipahu-Ewa
MORTGAGE STATUS AND SELECTED MONTHLY OWNER COSTS												
2007												
Housing units with a mortgage (% of total units)	68.4	67.5	68.3	61.8	68.7	73.8	74.5	60.7	54.1	51.6	64.0	85.5
Less than \$500 (% of units with mortgage)	2.5	1.6	1.2	3.3	1.4	2.7	2.4	0.4	1.4	1.2	1.8	0.8
\$500 to \$999	21.9	8.9	8.1	15.2	7.6	13.1	6.9	3.5	13.3	14.2	6.8	5.2
\$1,000 to \$1,499	27.5	16.7	17.4	26.5	14.3	21.7	8.2	11.3	20.7	13.9	18.0	12.8
\$1,500 to \$1,999	19.2	19.5	15.8	20.3	20.2	25.7	19.7	18.0	18.5	27.3	22.0	18.1
\$2,000 or more	28.9	53.4	57.5	34.7	56.5	36.9	62.8	66.8	46.1	43.3	51.4	63.1
Median monthly owner costs (dollar)	1,464	2,099	2,244	1,612	2,180	1,696	2,498	2,481	1,846	1,882	2,029	2,300
2006												
Housing units with a mortgage (% of total units)	68.2	68.6	66.7	64.2	70.1	72.8	73.9	61.9	57.4	53.0	62.9	87.4
Less than \$500 (% of units with mortgage)	2.8	1.7	1.3	4.7	1.2	1.6	0.9	1.1	0.4	2.6	1.8	0.9
\$500 to \$999	23.8	10.1	10.3	19.5	8.1	12.5	6.4	4.3	16.3	8.0	9.1	6.5
\$1,000 to \$1,499	28.6	17.1	14.8	26.4	15.6	28.3	16.2	6.2	21.7	14.9	15.8	14.2
\$1,500 to \$1,999	19.0	23.0	23.6	20.6	23.3	25.8	22.1	16.1	21.8	23.7	25.5	25.8
\$2,000 or more	25.7	48.1	50.0	28.8	51.8	31.9	54.4	72.2	39.8	50.8	47.8	52.5
Median monthly owner costs (dollar)	1,402	1,959	2,000	1,489	2,047	1,657	2,119	2,743	1,787	2,024	1,959	2,058
2005												
Housing units with a mortgage (% of total units)	67.9	67.8	67.2	62.7	69.1	75.1	74.3	67.7	52.4	50.3	60.6	85.8
Less than \$300 (% of units with mortgage)	0.4	0.3	0.2	0.1	0.4	1.3	0.0	0.3	0.0	0.0	0.0	0.6
\$300 to \$499	3.2	1.6	1.5	3.3	1.3	2.0	1.2	2.4	0.5	1.1	1.4	0.7
\$500 to \$699	8.4	3.8	1.8	9.0	3.3	4.2	2.0	3.9	7.4	4.6	1.8	2.3
\$700 to \$999	19.3	9.7	9.4	16.3	8.4	13.6	7.7	5.9	9.1	9.4	9.7	7.6
\$1,000 to \$1,499	29.6	21.9	19.3	29.9	20.8	26.4	14.7	13.9	28.4	26.3	24.7	20.3
\$1,500 to \$1,999	18.0	22.2	23.9	16.8	22.9	23.7	23.8	14.1	18.7	22.5	24.2	27.6
\$2,000 or more	21.0	40.5	43.8	24.7	42.9	28.9	50.4	59.4	36.0	36.1	38.2	40.9
Median monthly owner costs (dollar)	1,295	1,763	1,856	1,344	1,834	1,549	2,010	2,204	1,583	1,667	1,771	1,824

Continued on next page

Table D-3. Selected Monthly Owner Costs for the Housing Units with a Mortgage: 2005 to 2007 - Con

	U.S.	State	Maui county, Kalawao county and Kauai county	Hawaii county	Honolulu county	Rural Oahu	Koolau-poko	Makapuu-Manoa stream	Manoa-Waikiki-Kakaako-Tantalus	Pauoa-Down-town-Kalihi	Moana-lua-Airport-Pearl City	Mililani-Waipahu-Ewa
SELECTED MONTHLY OWNER COSTS AS A PERCENTAGE OF HOUSEHOLD INCOME												
2007												
Housing unit with a mortgage	68.4	67.5	68.3	61.8	68.7	73.8	74.5	60.7	54.1	51.6	64.0	85.5
Less than 20.0 percent	33.8	27.7	24.0	32.3	27.6	29.3	30.7	26.2	30.2	30.7	32.0	23.0
20.0 to 24.9 percent	15.8	13.2	9.8	10.8	14.7	15.3	12.4	16.8	13.3	13.5	15.8	14.9
25.0 to 29.9 percent	12.4	12.8	13.9	11.3	12.8	10.0	14.3	11.1	11.8	11.8	15.7	13.0
30.0 to 34.9 percent	9.0	8.6	8.7	7.3	8.9	6.3	10.6	7.7	8.0	10.2	9.1	9.4
35.0 percent or more	28.5	37.1	43.0	37.9	35.4	37.3	31.0	38.3	36.6	33.8	26.5	39.3
Not computed	0.4	0.6	0.6	0.4	0.6	1.8	1.1	0.0	0.0	0.0	0.9	0.4
2006												
Housing unit with a mortgage	68.2	68.6	66.7	64.2	70.1	72.8	73.9	61.9	57.4	53.0	62.9	87.4
Less than 20.0 percent	33.8	26.2	20.8	35.4	25.4	32.4	29.5	23.8	19.1	29.3	28.2	22.3
20.0 to 24.9 percent	16.2	14.6	12.5	17.0	14.6	16.5	13.6	13.4	12.8	15.3	18.2	14.1
25.0 to 29.9 percent	12.6	13.1	13.2	7.4	14.4	14.5	13.7	13.3	16.1	12.0	9.6	16.9
30.0 to 34.9 percent	9.1	10.5	11.2	7.6	10.9	8.3	10.1	11.3	9.2	14.1	8.7	12.6
35.0 percent or more	27.9	35.2	41.2	32.5	34.3	27.9	33.1	38.0	42.4	29.3	35.3	33.6
Not computed	0.4	0.4	1.1	0.1	0.3	0.4	0.0	0.2	0.4	0.0	0.0	0.6
2005												
Housing unit with a mortgage	67.9	67.8	67.2	62.7	69.1	75.1	74.3	67.7	52.4	50.3	60.6	85.8
Less than 20.0 percent	36.0	29.5	27.2	32.4	29.5	37.0	34.6	32.0	19.2	29.0	33.1	25.2
20.0 to 24.9 percent	16.6	16.9	17.0	14.5	17.4	17.6	14.0	15.5	20.4	17.1	18.3	18.6
25.0 to 29.9 percent	12.5	13.4	11.2	10.1	14.6	9.5	17.8	11.7	14.6	16.7	14.4	15.7
30.0 to 34.9 percent	8.7	8.7	5.5	10.6	9.1	6.3	4.9	11.7	10.2	11.0	6.8	10.9
35.0 percent or more	25.8	31.0	38.8	32.4	28.8	28.7	28.2	28.5	34.4	25.6	26.5	29.3
Not computed	0.4	0.5	0.3	0.0	0.6	0.9	0.3	0.6	1.1	0.7	1.0	0.3

Source: U.S. Census Bureau, American Community Survey (annual), Housing Characteristics <http://factfinder.census.gov/servlet/DatasetMainPageServlet?_program=ACS&_submenuId=&_lang=en&_ts=> calculations by the Hawaii State Department of Business, Economic Development & Tourism.

**Table D-4. Monthly Gross Rent: 2005 and 2007
(% of total rental units)**

	U.S.	State	Maui county, Kalawao county and Kauai county	Hawaii county	Honolulu county	Rural Oahu	Koolau-poko	Makapuu-Manoa stream	Manoa-Waikiki-Kakaako-Tantalus	Pauoa-Down-town-Kalihi	Moana-lua-Airport-Pearl City	Mililani-Waipahu-Ewa
Rent level												
2007												
Less than \$500	17.1	8.8	9.6	14.3	7.7	4.7	(2/)	(2/)	7.2	22.9	(2/)	(2/)
\$500 to \$999	48.5	25.3	17.9	28.3	26.3	27.2	(2/)	(2/)	42.8	36.4	(2/)	(2/)
\$1,000 to \$1,499	19.5	27.1	37.8	25.4	25.1	23.0	(2/)	(2/)	29.6	22.2	(2/)	(2/)
\$1,500 or more	9.0	31.0	27.3	19.8	33.5	33.3	(2/)	(2/)	15.0	13.7	(2/)	(2/)
No cash rent	5.9	7.9	7.4	12.2	7.3	11.8	(2/)	(2/)	5.3	4.9	(2/)	(2/)
Median monthly gross rent (dollar)	789	1,194	1,260	1,020	1,206	1,245	1,605	1,232	983	880	1,629	1,592
2006												
Less than \$500	18.6	9.6	7.6	15.4	9.0	9.8	(2/)	(2/)	7.1	28.1	(2/)	7.8
\$500 to \$999	49.5	28.5	23.9	34.0	28.6	32.9	(2/)	(2/)	44.4	36.9	(2/)	17.7
\$1,000 to \$1,499	18.3	26.7	33.9	27.7	24.9	24.6	(2/)	(2/)	28.5	20.3	(2/)	28.9
\$1,500 or more	7.6	25.5	24.9	13.7	27.7	17.6	(2/)	(2/)	13.9	9.5	(2/)	41.7
No cash rent	6.1	9.7	9.6	9.2	9.8	15.1	(2/)	(2/)	6.2	5.1	(2/)	4.0
Median monthly gross rent (dollar)	763	1,116	1,212	940	1,127	996	1,514	1,526	970	811	1,509	1,406
2005												
Less than \$500	20.5	10.6	11.5	14.1	9.9	6.9	4.4	4.2	8.4	28.9	2.2	(2/)
\$500 to \$999	51.1	34.6	31.1	39.2	34.6	33.9	22.3	23.1	54.7	37.3	21.6	(2/)
\$1,000 to \$1,499	16.1	24.5	29.0	24.3	23.5	17.3	30.3	24.3	21.1	18.1	30.0	(2/)
\$1,500 or more	6.3	20.0	17.1	8.8	22.3	26.3	25.7	37.5	9.9	10.9	28.1	(2/)
No cash rent	6.0	10.4	11.4	13.6	9.7	15.6	17.3	10.9	5.8	4.7	18.1	(2/)
Median monthly gross rent (dollar)	728	995	1,025	820	1,012	1,041	1,277	1,373	872	813	1,315	1,337

Continued on next page

Table D-4. Monthly Gross Rent: 2005 and 2007 - Con
(% of total rental units)

	U.S.	State	Maui county, Kalawao county and Kauai county	Hawaii county	Honolulu county	Rural Oahu	Koolau-poko	Makapuu-Manoa stream	Manoa-Waikiki-Kakaako-Tantalus	Pauoa-Down-town-Kalihi	Moana-lua-Airport-Pearl City	Mililani-Waipahu-Ewa
Monthly gross rent as a % of household income												
2007												
Less than 15.0 percent	12.1	9.2	10.3	9.3	9.0	8.4	(2/)	(2/)	8.9	13.6	(2/)	(2/)
15.0 to 19.9 percent	11.8	9.9	13.1	14.5	8.6	6.8	(2/)	(2/)	5.9	12.0	(2/)	(2/)
20.0 to 24.9 percent	12.1	11.7	10.5	12.1	11.9	8.4	(2/)	(2/)	9.5	14.9	(2/)	(2/)
25.0 to 29.9 percent	10.8	11.3	14.6	8.6	11.1	9.2	(2/)	(2/)	11.6	11.1	(2/)	(2/)
30.0 to 34.9 percent	8.4	8.8	7.9	10.1	8.8	8.1	(2/)	(2/)	9.8	10.7	(2/)	(2/)
35.0 percent or more	37.2	39.1	34.5	31.6	41.1	44.4	(2/)	(2/)	43.9	31.7	(2/)	(2/)
Not computed 1/	7.5	9.9	9.0	13.8	9.5	14.7	(2/)	(2/)	10.3	5.9	(2/)	(2/)
2006												
Less than 15.0 percent	11.9	10.5	12.5	14.7	9.3	11.8	8.2	14.0	7.9	12.8	7.0	7.5
15.0 to 19.9 percent	11.8	11.0	10.9	10.6	11.1	14.1	11.7	8.7	12.5	13.3	7.4	9.7
20.0 to 24.9 percent	11.9	10.5	9.5	11.2	10.6	9.0	10.8	11.6	10.0	13.1	13.0	7.2
25.0 to 29.9 percent	10.8	10.8	12.3	12.5	10.1	6.0	9.5	8.2	11.7	11.5	6.1	14.8
30.0 to 34.9 percent	8.3	7.3	5.9	7.0	7.6	6.2	7.1	4.1	7.0	7.9	6.4	12.8
35.0 percent or more	37.6	38.4	38.8	32.9	39.3	36.9	33.6	41.9	41.9	31.7	42.1	42.5
Not computed 1/	7.7	11.6	10.2	11.3	11.9	16.0	19.1	11.4	9.0	9.7	18.0	5.5
2005												
Less than 15.0 percent	12.0	9.9	14.5	10.7	8.9	5.9	10.5	14.0	6.0	12.3	10.9	(2/)
15.0 to 19.9 percent	11.9	11.2	11.3	12.8	10.9	7.8	14.0	10.1	12.3	10.0	6.8	(2/)
20.0 to 24.9 percent	12.0	12.3	12.2	15.6	11.8	13.1	17.2	4.6	12.2	12.2	9.1	(2/)
25.0 to 29.9 percent	10.9	10.4	9.7	11.7	10.4	7.7	8.3	11.0	10.6	14.0	8.6	(2/)
30.0 to 34.9 percent	8.3	8.6	11.2	7.4	8.2	6.0	4.6	8.8	6.4	14.1	7.1	(2/)
35.0 percent or more	37.4	35.4	29.1	27.8	37.8	43.5	27.6	38.2	42.4	31.1	37.0	(2/)
Not computed 1/	7.7	12.2	12.0	14.1	11.9	16.0	17.8	13.3	10.1	6.3	20.5	(2/)

1/ Units for which no cash rent is paid and units occupied by households that reported no income or a net loss comprise the category.

2/ Sample size was too small.

Source: U.S. Census Bureau, American Community Survey (annual), Housing Characteristics <http://factfinder.census.gov/servlet/DatasetMainPageServlet?_program=ACS&_submenuId=&_lang=en&_ts=> calculations by the Hawaii State Department of Business, Economic Development & Tourism.