

Data on a Deadline: Quick Report & Interactive Maps



Eric Coyle
Data Dissemination Specialist
U.S. Census Bureau

Outline

- Overview of Census Bureau Programs/Surveys
- ACS Overview
- Census Geography
- Accessing ACS Data Products
- Additional Resources
- Questions
- Online Demonstration

What does the Census Bureau Do?

Decennial Census

Every 10 years, Counts Residents

Periodical Surveys

American Housing Survey (2015)

American Community Survey (ACS)

Annual Social, Economic and
Housing data

Other Surveys and Censuses

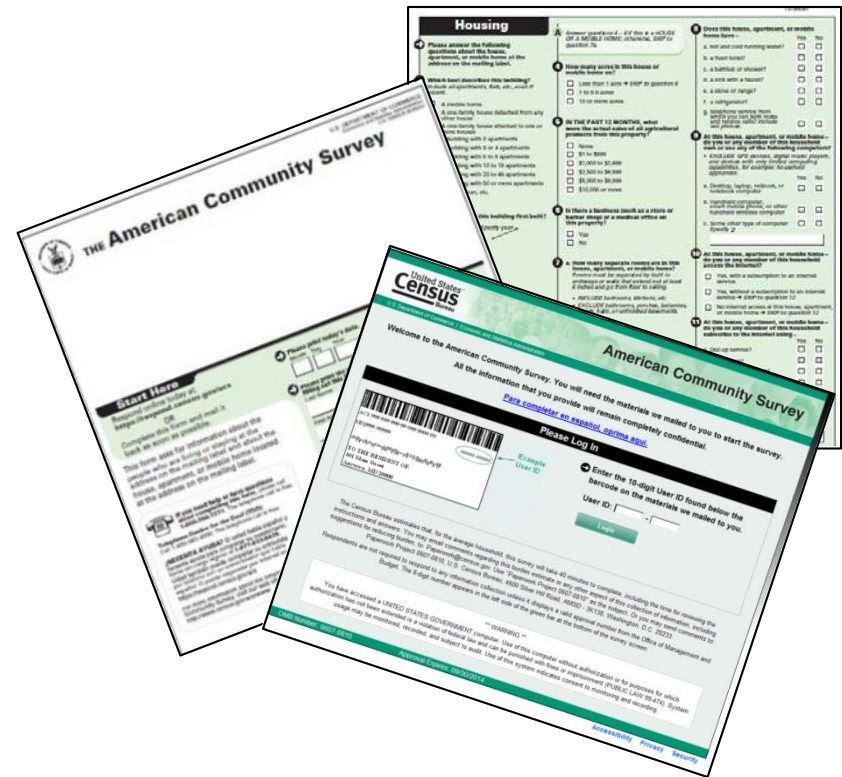
- ✓ Current Population Survey (CPS)
- ✓ National Crime and Victimization Survey (NCVS)
- ✓ Health Interview Survey (HIS)
- ✓ Consumer Expenditure Survey (CE)
- ✓ Population Estimates
- ✓ Economic Census
- ✓ Census of Governments

The Census Bureau's mission is to serve as the leading source of quality data about the nation's people and economy.

<https://www.census.gov/programs-surveys.html>

ACS Basics: The Survey

- Ongoing monthly survey sent to 3.5 million addresses per year to produce detailed population and housing estimates each year
 - Visit 20,000 Group Quarter facilities and sample approximately 194,000 residents each year
- Designed to produce *critical information on small areas and small population groups* previously collected on the decennial long form
- Covers 35+ topics and supports over 300 known Federal Government uses
- Data released twice annually
 - 1-year estimates (12 months of data)
 - 5-year estimates (60 months of data)



2010 Census vs. ACS

2010
Census

100 % Data

How many people
live in the U.S.?

Point in time April
1, 2010

Count - People,
Housing units,

American
Community
Survey

=

2000 Long Form
SF3 & SF4

Sample Data

How do people live
in the U.S.?

Period in Time
1yr, 5yr

Characteristics
Income, Poverty,
Education

ACS Content

Items in **red** were also collected on the **2010 Census**

Demographic Characteristics

- Age
- Sex
- Race
- Hispanic Origin
- Household Relationship
- Group Quarters

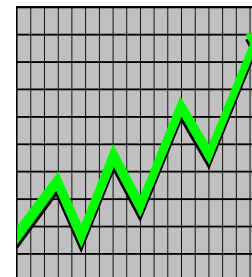


Social Characteristics

- Families
- Education
- Marital Status
- Fertility
- Grandparent Caregivers
- Veterans
- Disability Status
- Place of Birth
- Citizenship
- Year of Entry
- Language Spoken at Home
- Ancestry/ Tribal Affiliation

Economic Characteristics

- Income
- Poverty
- Benefits
- Employment Status
- Occupation
- Industry
- Commuting to Work



Housing Characteristics

- Tenure (Rent/Own)
- Occupancy
- Structure
- Housing Value
- Taxes & Insurance
- Utilities
- Mortgage/ Monthly Rent



ACS Data Products

Data Product	Description
Data Profiles	Provide broad social, economic, housing, and demographic profiles.
Narrative Profiles	Summarize the information in the data profiles using concise, nontechnical text.
Comparison Profile	Compares over 5-year period selected enhancements.
Selected Population Profiles	Provide broad social, economic, and housing profiles for a large number of race, ethnic, ancestry, and country/region of birth groups.
Detailed Tables	Provide access to the most detailed ACS data and cross tabulations of ACS variables.
Subject Tables	Similar to data profiles but include more detailed ACS data, classified by subject.
Ranking Tables	Provide state rankings of estimates across 86 key variables.
Geographic Comparison Tables	Compare geographic areas other than states (e.g., counties or congressional districts) for key variables.
Supplemental Tables	Detailed tables available for geographic areas with populations of 20,000 or more.

Current ACS 1-year/5-year Data

- **Areas with a population 65,000+: 1-year estimates**

(2005, 2006, 2007, 2008, 2009, 2010, 2011, 2012, 2013, 2014, 2015, **2016**)

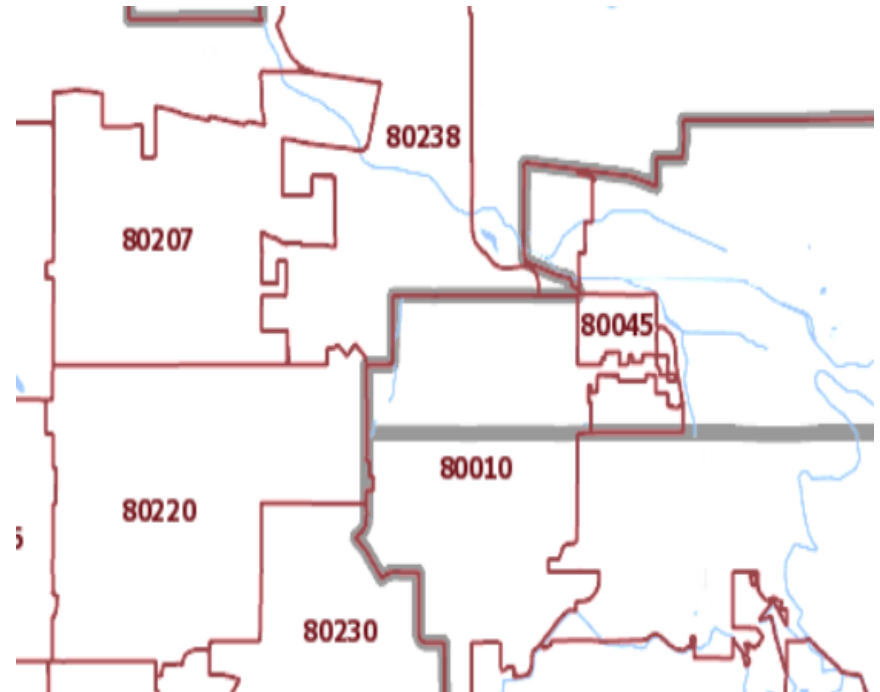
All areas (incl. census tracts & block groups): **5-year estimates**

(2005-2009, 2006-2010, 2007-2011, 2008-2012, 2009-2013, 2010-2014,
2011-2015, **2012-2016**)

Census Geography

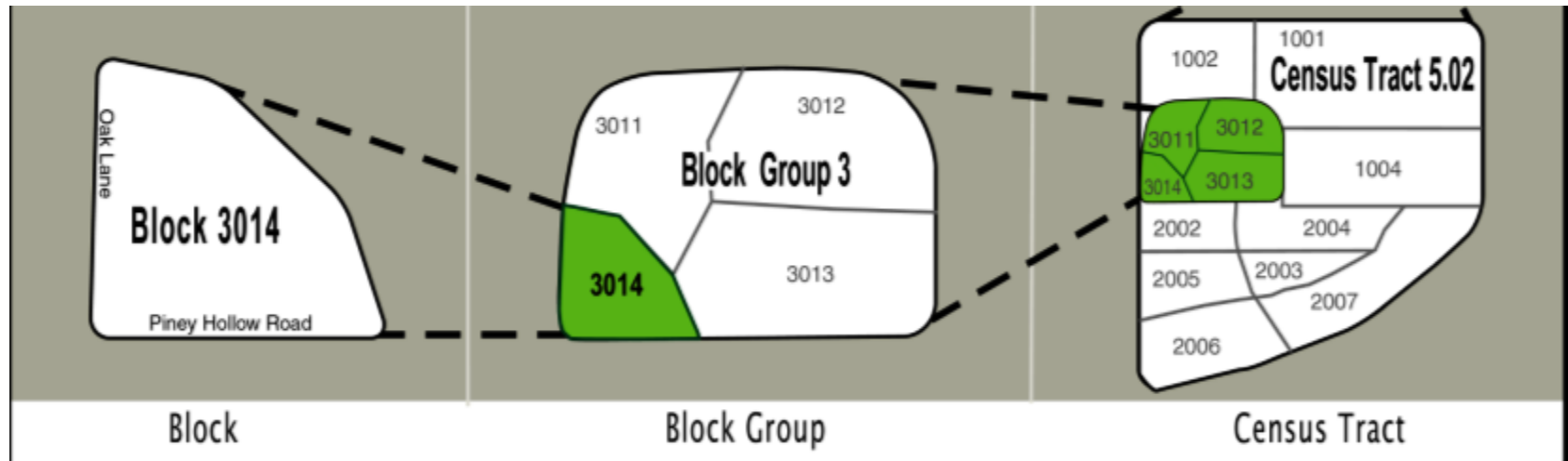
Selected Census Geographic Concepts—Legal Areas

- Nation
- States
- Counties
- Incorporated Places
- Minor Civil Divisions
- Congressional Districts
- School Districts
- Zip Codes



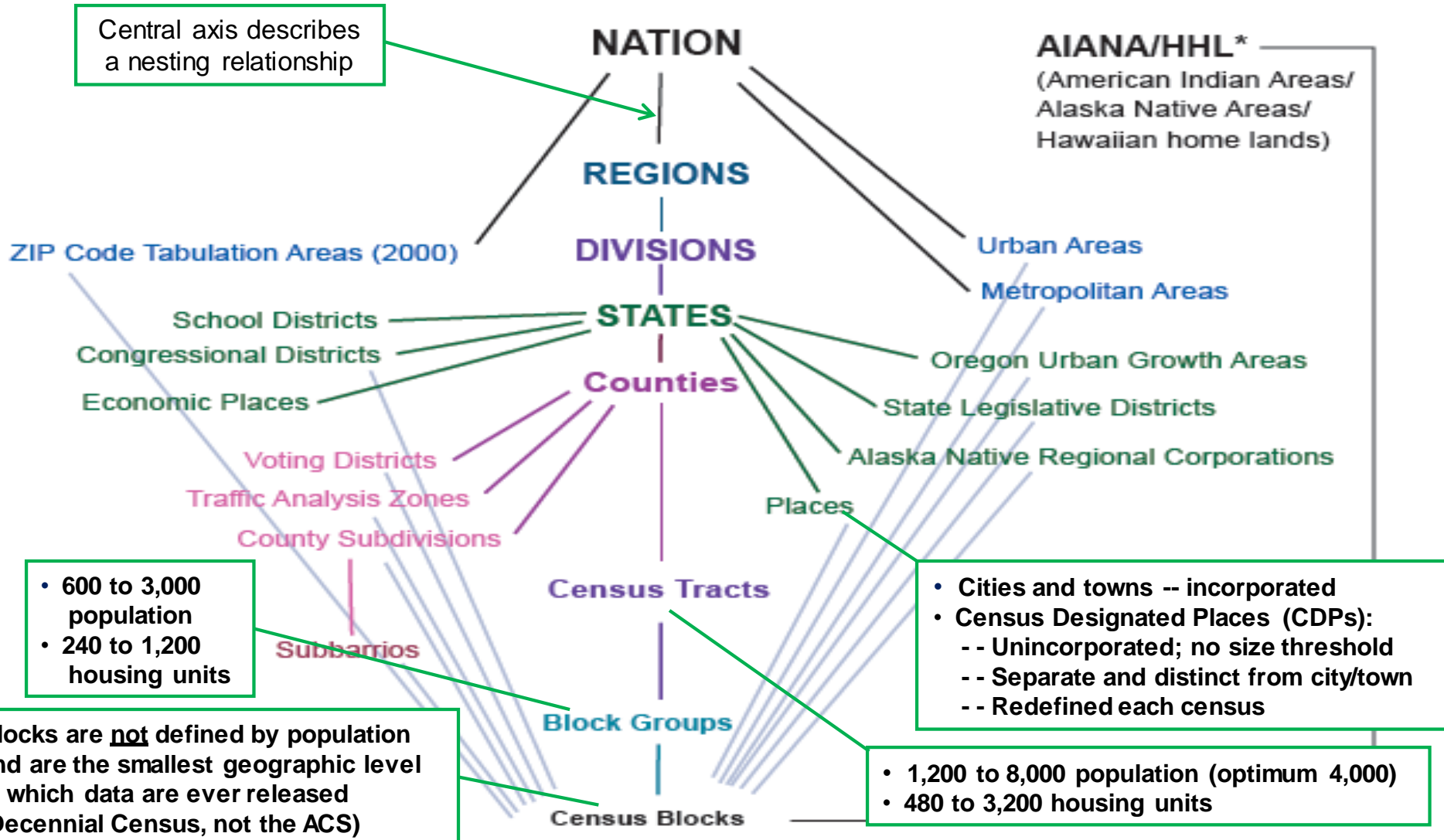
Small Area Census Geography

How it Fits Together



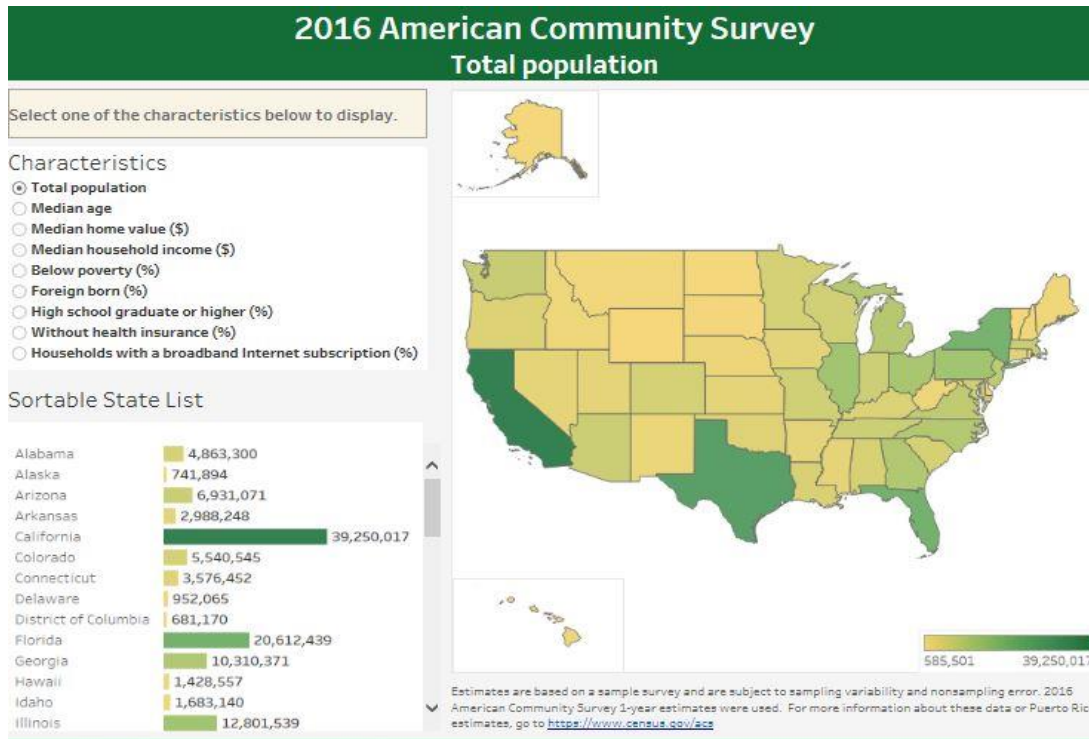
Census Tract > Place (City or CDP) > Census County Division (CCD) > County

Census Geography Hierarchy



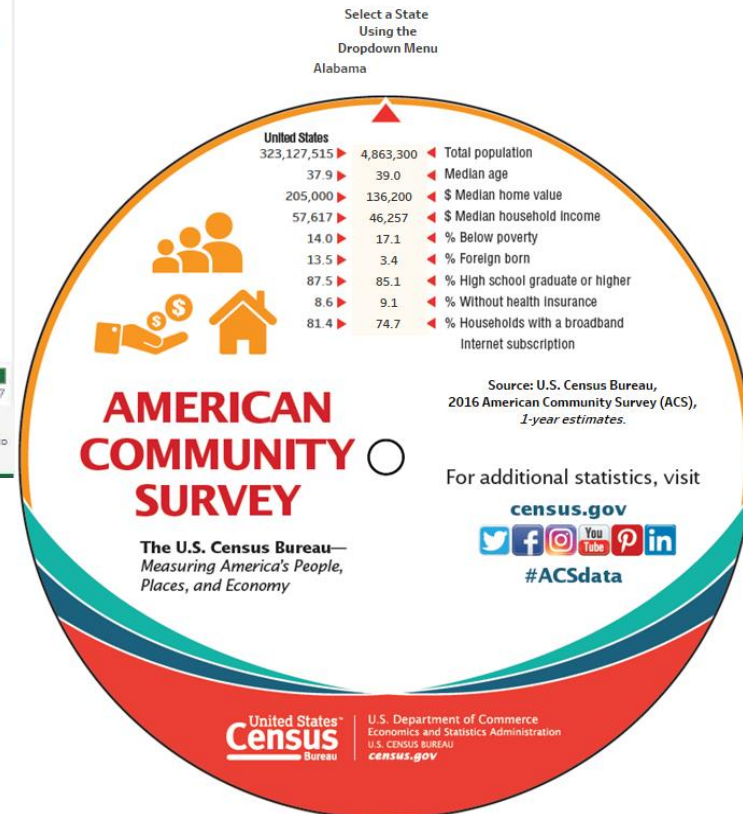
Accessing Quick Data Tools

New Data Visualization Tools



The [Data Wheel Dashboard](#) includes a bar graph and map of the U.S. highlighting ACS characteristics for all 50 states.

The [ACS Data Wheel](#) allows users to explore ACS data for all 50 states.



ACS Website



U.S. Department of Commerce | Blogs | Index A-Z

TOPICS

Population, Economy

GEOGRAPHY

Maps, Products

LIBRARY

Infographics, Publications

DATA

Tools, Developers

SURVEYS/PROGRAMS

Respond, Survey Data

NEWSROOM

News, Blogs

ABOUT US

Our Research

Search

Census.gov > Our Surveys & Programs > American Community Survey (ACS)

American Community Survey (ACS)

About the Survey

Respond to the Survey

News & Updates

Data

Guidance for Data Users

Geography & ACS

Technical Documentation

Methodology

Library

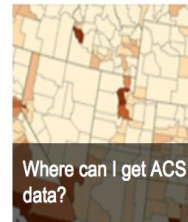
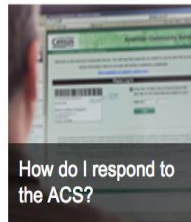
Operations and Administration

Contact Us



Respond to the ACS
Learn how

The [American Community Survey \(ACS\)](#) helps local officials, community leaders, and businesses understand the changes taking place in their communities. It is the premier source for detailed population and housing information about our nation.



Latest



2016 Data Release

Learn more about ACS data releases, including the January 18th release of 2012-2016 ACS 5-Year Public Use Microdata Sample files and Variance Replicate Tables.

census.gov/acs



U.S. Department of Commerce
Economics and Statistics Administration
U.S. CENSUS BUREAU
census.gov

Data Tables & Tools

American Community Survey

- About the Survey
- Respond to the Survey
- News & Updates
- Data
- Data Tables & Tools**
- Data Profiles
- Narrative Profiles
- Subject Tables
- Ranking Tables**
- Supplemental Tables
- American FactFinder
- Data via FTP
- Summary File Data
- PUMS Data
- Variance Replicate Tables
- Race/Ethnicity & AIAN Data
- Custom Tables
- Guidance for Data Users
- Geography & the ACS
- Technical

Ranking Tables

Tell Us What You Think!

Show entries Filter by keyword:

Table Title	Topic	Table ID
Percent Of The Total Population Who Are White Alone	Race	R0201
Percent Of The Total Population Who Are Black Or African American Alone	Race	R0202
Percent Of The Total Population Who Are American Indian And Alaska Native Alone	Race	R0203
Percent Of The Total Population Who Are Asian Alone	Race	R0204
Percent Of The Total Population Who Are Native Hawaiian And Other Pacific Islander Alone	Race	R0205
Percent Of The Total Population Who Are Some Other Race Alone	Race	R0206
Percent Of The Total Population Who Are Two Or More Races	Race	R0207
Percent Of The Total Population Who Are Two Or More Races Excluding Some Other Race	Race	R0208
Percent Of The Total Population Who Are White Alone, Not Hispanic Or Latino	Race	R0209
Percent Of People Who Are Foreign Born	Foreign Born; Citizenship; Year of Entry; Nativity	R0501
Percent Of Foreign-Born People Born In Europe	Foreign Born; Citizenship; Year of Entry; Nativity	R0502
Percent Of Foreign-Born People Born In Asia	Foreign Born; Citizenship; Year of Entry; Nativity	R0503

census.gov/acs/www/data/data-tables-and-tools/

Narrative Profiles

Population and Housing Narrative Profile 2009-2013 American Community Survey 5-Year Estimates

Select a New Geography

While the ACS produces sample-based population group and housing estimates used in this report, the Census Bureau's Population Estimates Program produces and disseminates official estimates of the population for the nation, states, counties, cities and towns, as well as estimates of housing units for states and counties. For more information see: <http://www.census.gov/popest/>

Note that for small geographic areas, the sample used for the Narrative Profile may be small as well. Users are encouraged to examine the detailed tables on [American FactFinder](#) that are associated with the Narrative Profile text. These tables provide additional information on sampling variability associated with the estimates in this report.

Geography: Pahrump, Nevada

>> Expand All Sections

<< Collapse All Sections

Households and Families

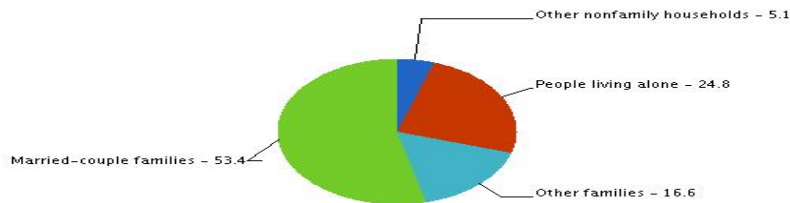
In 2009-2013 there were 14,900 households in Pahrump, Nevada. The average household size was 2.4 people.

Families made up 70 percent of the households in Pahrump, Nevada. This figure includes both married-couple families (53 percent) and other families (17 percent). Of other families, 5 percent are female householder families with no husband present and own children under 18 years. Nonfamily households made up 30 percent of all households in Pahrump, Nevada. Most of the nonfamily households were people living alone, but some were composed of people living in households in which no one was related to the householder.

In Pahrump, Nevada, 25 percent of all households have one or more people under the age of 18; 45 percent of all households have one or more people 65 years and over.

Types of Households in Pahrump, Nevada in 2009-2013

[click graph to view data in table format](#)



When to use:

Browse statistics presented as a text-based report with plenty of colorful graphs and charts.

census.gov/acs/data/data-tables-and-tools/narrative-profiles

Interactive Maps

Geography

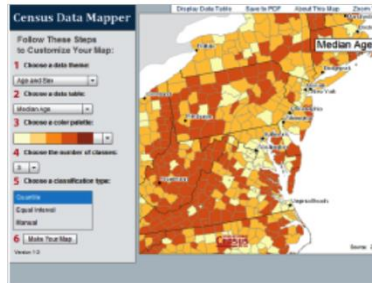
- About this Section
- Education
- GSS Initiative
- Interactive Maps**
- Maps & Data
- Metropolitan and Micropolitan
- Partnerships
- Reference
- Research

Interactive Maps

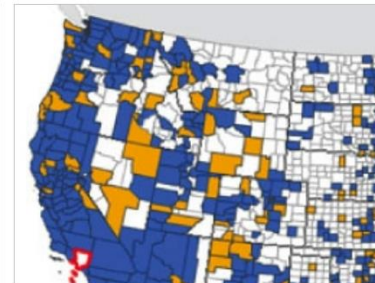
Work with interactive mapping tools from across the Census Bureau.



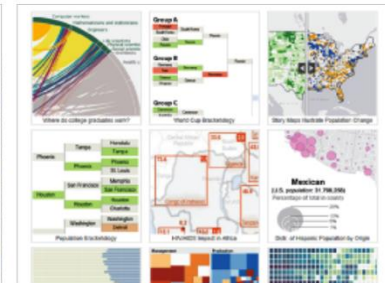
Census Business Builder



Census Data Mapper



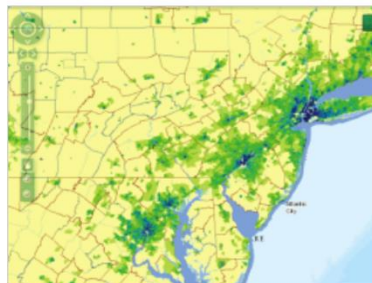
Census Flows Mapper



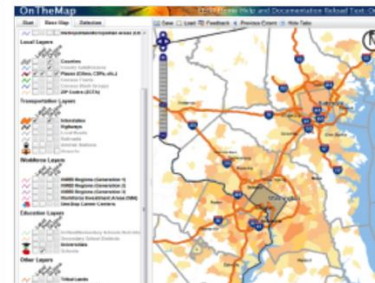
Data Visualization Gallery



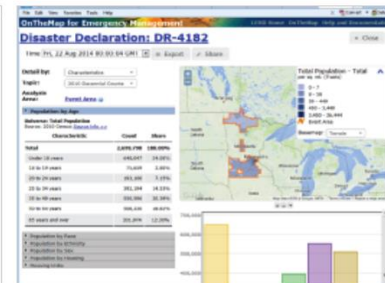
Interactive Population Map



Metro/Micro Thematic Map Viewer



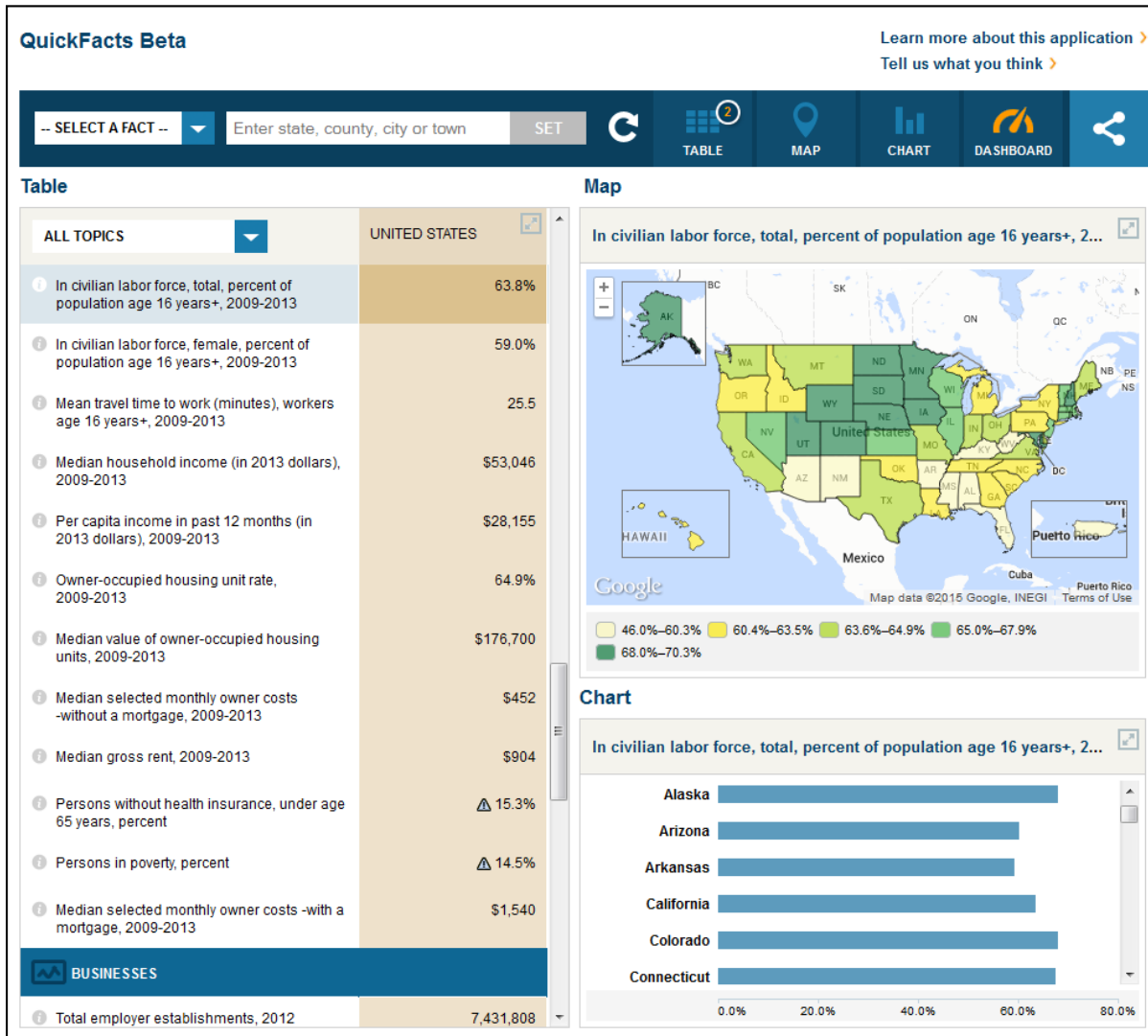
OnTheMap (Employment)



OnTheMap for Emergency Management

census.gov/geography/interactive-maps

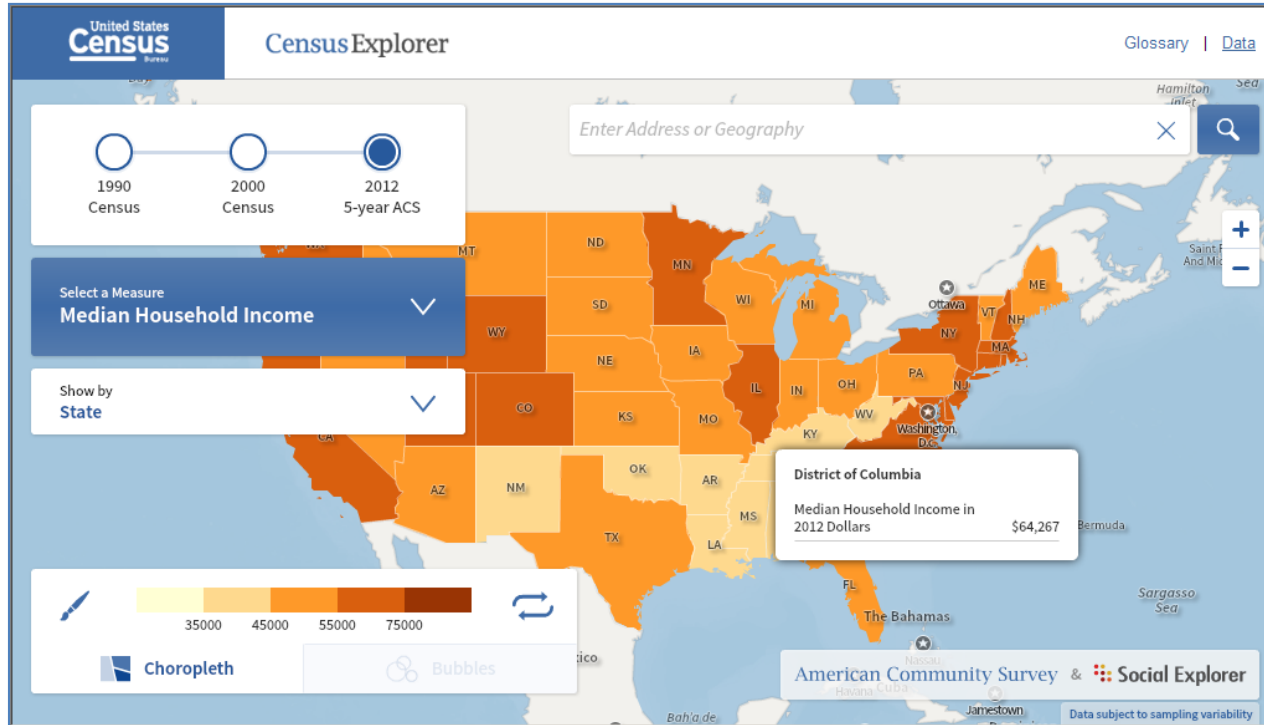
QuickFacts



When to use:
 Find a fact fast. View selected estimates about social, economic, and housing characteristics for all states and counties, and for cities with more than 5,000 people.

census.gov/quickfacts

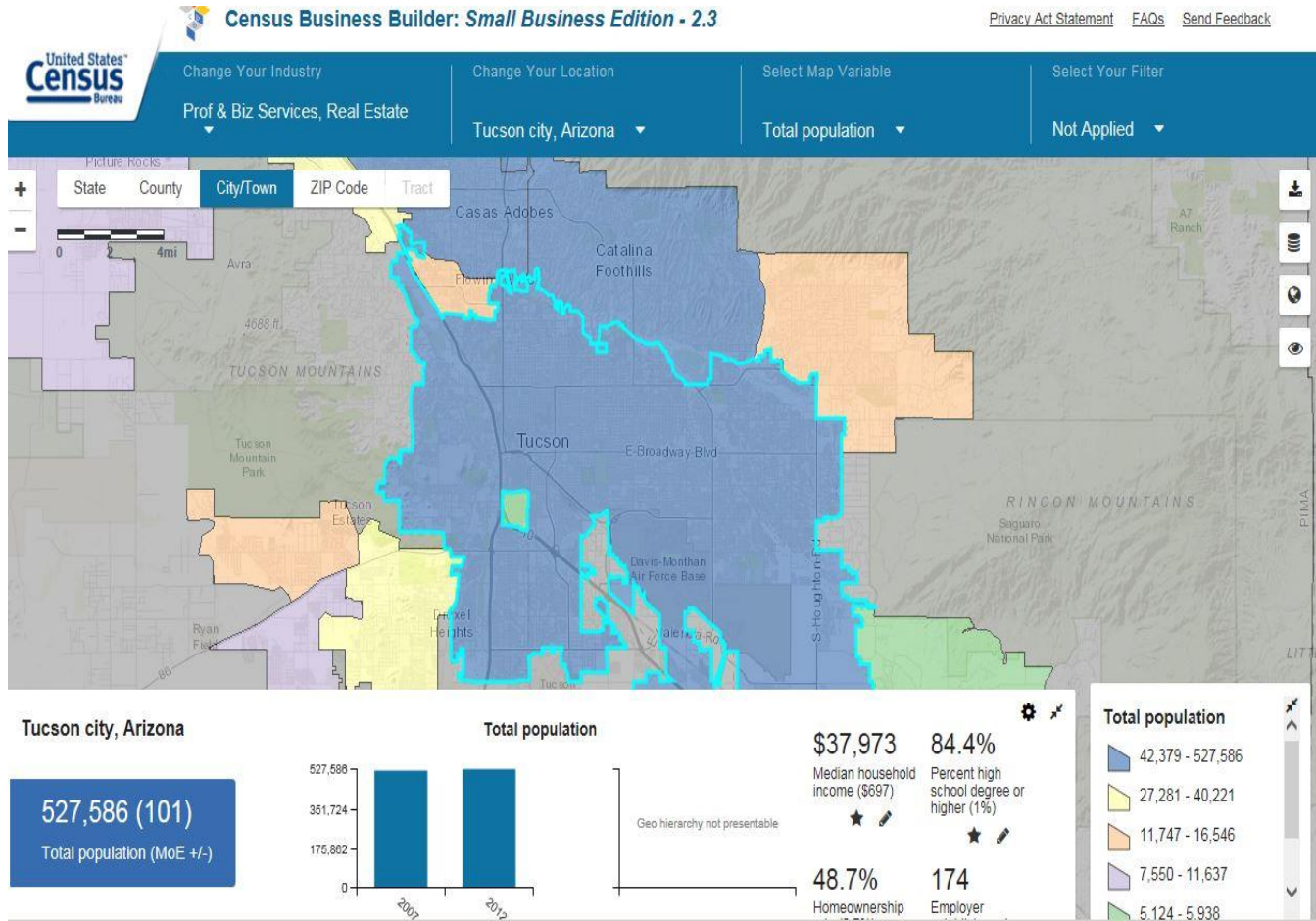
Census Explorer



When to use:
Explore selected estimates about people, education, income, and commuting in an interactive map to visualize how statistics change over time and across geographies.

census.gov/censusexplorer

Census Business Builder



When to use:
Offers prospective business owners selected Census Bureau statistics to guide their research into opening their new business.

census.gov/data/data-tools/cbb

My Congressional District

The screenshot shows the 'My Congressional District' website. At the top, there is a silhouette of the U.S. Capitol building with a red banner that says '114th Congress'. Below this is the title 'My Congressional District'. In the top right corner, it says 'Tell us what you think'. The main interface includes two dropdown menus: the first is labeled '1 Select a State' and the second is labeled '2'. To the right of these menus are six icons representing different data categories: People, Workers, Housing, Socio-Economic, Education, and Business. Below the dropdowns is a map of the United States with state boundaries. A central text box explains that the tool provides quick access to statistics from the American Community Survey (ACS) and County Business Patterns (CBP). At the bottom left, it features the United States Census Bureau logo and the text 'U.S. Department of Commerce, Economics and Statistics Administration, U.S. CENSUS BUREAU, census.gov'. At the bottom right, it says 'POWERED BY The American Community Survey and County Business Patterns'.

Tell us what you think

114th Congress

My Congressional District

1 Select a State

2

People Workers Housing Socio-Economic Education Business

My Congressional District gives you quick and easy access to selected statistics collected by the U.S. Census Bureau through the [American Community Survey \(ACS\)](#) and [County Business Patterns \(CBP\)](#). The ACS provides detailed demographic, social, economic, and housing statistics every year for the nation's communities. CBP provides annual statistics for businesses with paid employees at a detailed geography and industry level. My Congressional District is powered by ACS and CBP data through the [Census Application Programming Interface \(API\)](#).

Sources: 2015 American Community Survey 1-Year Estimates and 2014 County Business Patterns

United States Census Bureau
U.S. Department of Commerce
Economics and Statistics Administration
U.S. CENSUS BUREAU
census.gov

POWERED BY
The American Community Survey and County Business Patterns

When to use:
Access selected statistics about your Congressional district collected through the American Community Survey (ACS) and County Business Patterns (CBP).

census.gov/mycd/

My Tribal Area

Tell us what you think >

My Tribal Area

Enter name of Tribal Area
OR

1 Select a State

2

People Jobs Housing Economy Education

The Census Bureau collects data for the American Indian and Alaska Native (AIAN) population and publishes specific counts, estimates, and statistics. My Tribal Area gives you quick and easy access to selected statistics from the American Community Survey (ACS). The ACS provides detailed demographic, social, economic, and housing statistics every year for the nation's communities. My Tribal Area is powered by the Census Application Programming Interface (API).

Source: 2011-2015 American Community Survey 5-Year Estimates

U.S. Department of Commerce
Economics and Statistics Administration
U.S. CENSUS BUREAU
census.gov

POWERED BY
The American Community Survey

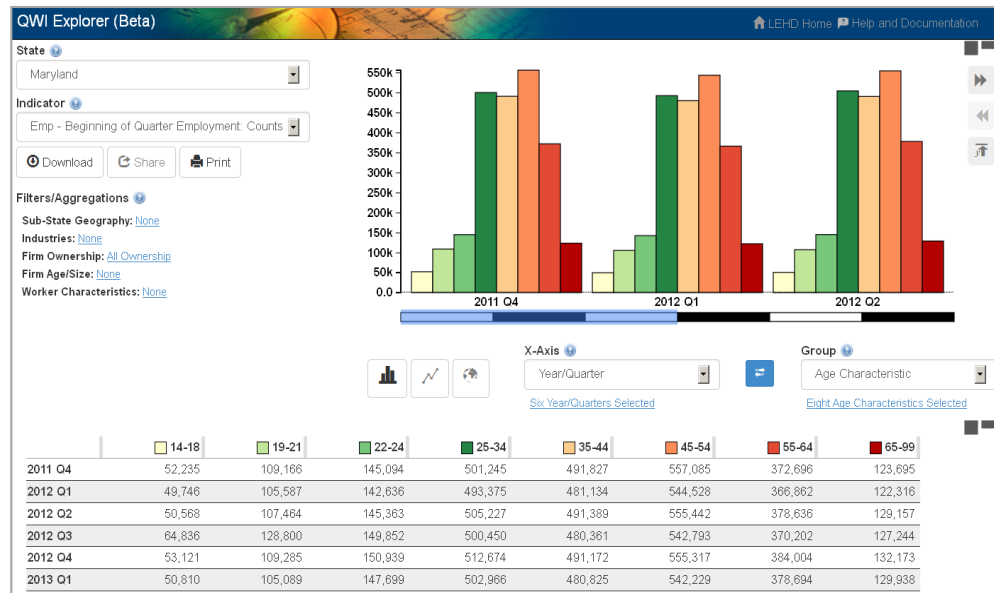
Glossary >

When to use:
The Census Bureau collects data for the American Indian and Alaska Native (AIAN) population and publishes specific counts, estimates, and statistics. My Tribal Area gives you quick and easy access to selected statistics from the American Community Survey.

census.gov/tribal/

QWI Explorer

- ✓ 32 Quarterly Workforce Indicators
- ✓ Flexible Pivot Table and Map/Chart interface
- ✓ Data on detailed interactions between firms and workers include employment, employment change (individual and firm), and earnings
- ✓ Analyze/report by worker demographics: age, earnings, race, ethnicity, educational attainment, and sex

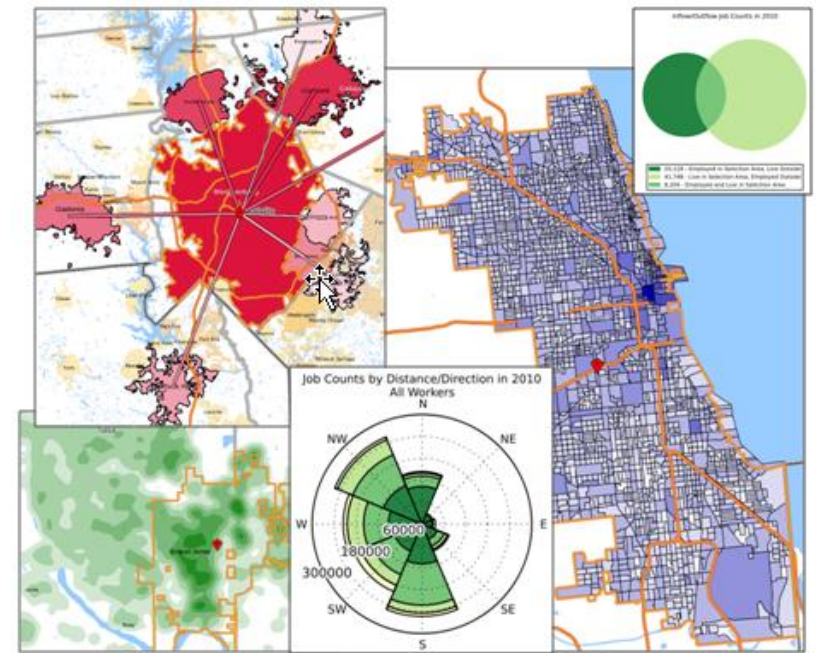


- ✓ Analyze/report by firm characteristics: NAICS classification (sector, 3, 4), firm age, and firm size
- ✓ Quarterly data very current (9-12 months old)
- ✓ National and 50 states available (plus DC)

OnTheMap

Recognized by United Nations as a major U.S. statistical innovation

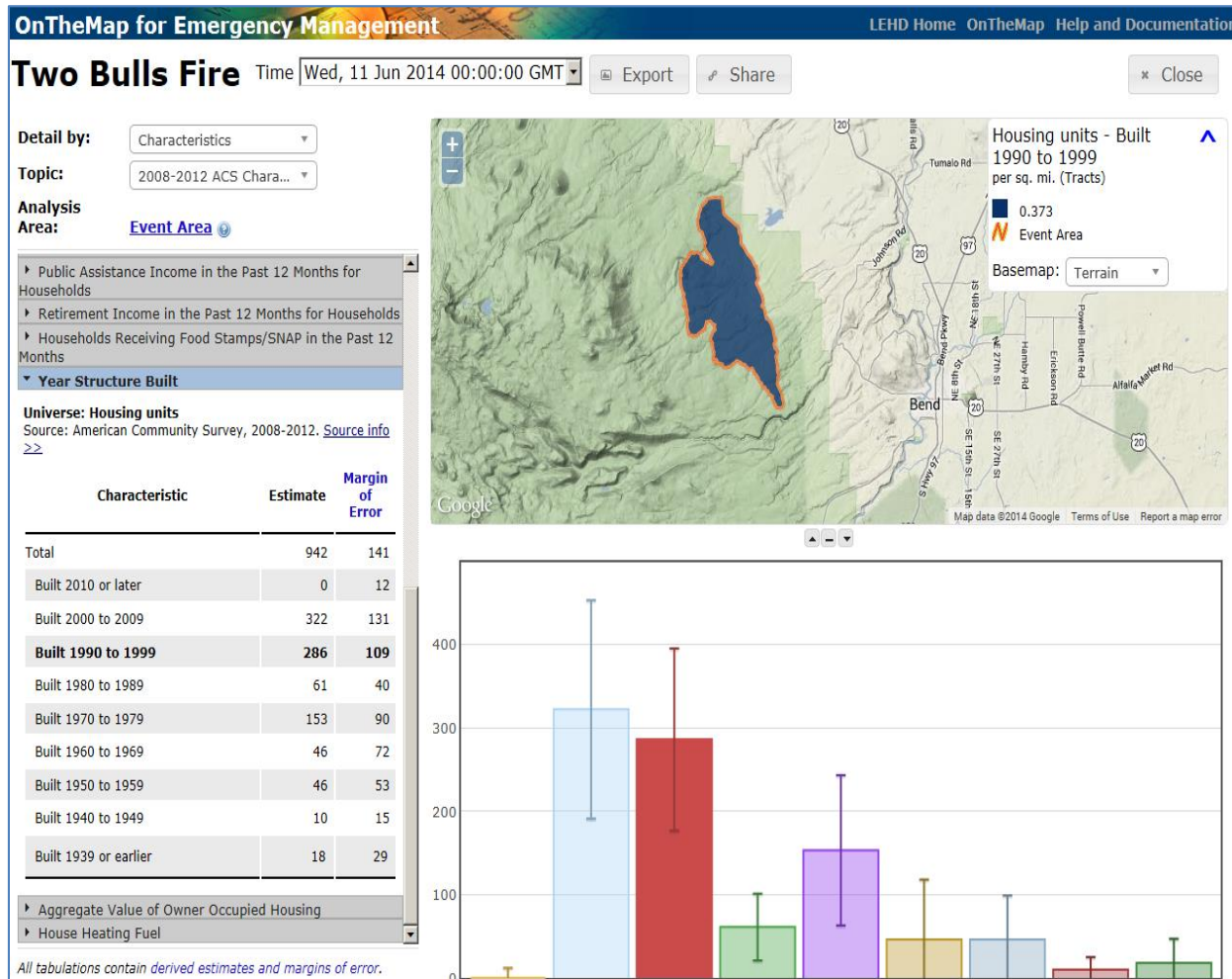
- ✓ Where do workers live?
- ✓ Where do residents work?
- ✓ What are the commuter flows of a particular area?
- ✓ Analyze/report by worker demographics: age, earnings, race, ethnicity, educational attainment, and sex
- ✓ Analyze/report by firm characteristics: NAICS Sector, firm age, and firm size



- ✓ 2002-2015
- ✓ 50 states available (plus DC)
- ✓ User-selected areas
- ✓ Based on Census Blocks
- ✓ Disclosure protection
- ✓ Flexible Inputs/Outputs

onthemap.ces.census.gov/

OnTheMap for Emergency Management



When to use:
 Learn about social, economic, housing, and demographic characteristics from the ACS, for all current declared emergency zones. The types of emergencies include disasters, natural hazards, and weather events, such as: hurricanes and tropical storms, floods, winter storms, and wildfires disaster declaration areas

onthemap.ces.census.gov/em

American FactFinder

The screenshot shows the American FactFinder website. At the top, there is a navigation bar with the U.S. Department of Commerce logo, the United States Census Bureau logo, and the American FactFinder title. A search bar is visible with a magnifying glass icon and the word 'KANSAS' entered. To the right of the search bar are links for 'Feedback', 'FAQs', and 'Glossary'. Below the navigation bar is a main menu with options: 'MAIN', 'COMMUNITY FACTS', 'GUIDED SEARCH', 'ADVANCED SEARCH', 'DOWNLOAD CENTER', 'English', and 'Espa'. A notification banner states: 'The U.S. Census Bureau's newly designed American Community Survey (ACS) website is now available.' The main content area is divided into two columns. The left column contains a 'Community Facts' section with a description and a search input field with a 'GO' button. Below this are links for 'Guided Search', 'Advanced Search', and 'Download Center'. The right column features a large image of a smiling young woman in a classroom. Below the image is a 'Popular Tables' section with two columns of links: 'Population and Housing' (including Annual Population Estimates, Demographic and Housing Estimates, General Housing Characteristics, and General Demographic Characteristics) and 'Poverty and Income' (including General Economic Characteristics). Below the Popular Tables section is a 'News and Notes' section with a date of June 02, 2015, and a 'GET EMAIL UPDATES' button.

When to use:
Search all ACS data for
all geographies down to
the block group level

factfinder.census.gov

Application Programming Interface (API)

Census.gov Data Developers

Developers

About this Section

API Forum

App Gallery

Available APIs

Geography

Guidance for Developers

News

Terms of Service

Updates

The Census Bureau has begun rolling out our datasets via APIs. Check out our [Discovery Tool](#). Sign up for our [newsletter](#) to get the latest updates and newest dataset addition. We also invite you to make requests for features / data via our [forum](#).

[Read More](#)

CITY SDK



MYOM: Make Your Own Maps!



Developers' Forum (Gitter.im)



Join the Mailing List

CitySDK Tutorial with Jeff Meisel

Toolbox for civic innovators to connect local and public data

Sources: The team at the "Building Better" lab at MIT, New York University, and the University of California, Berkeley.

Code Examples: Learn how to use the CitySDK API to get data from the Census Bureau.

Gallery: Browse the CitySDK API gallery for inspiration and examples.

The Opportunity Project: Let's build something lasting together.



Latest

Updates

Available APIs

News

International Trade (Time Series: 2005 - present)

June 02, 2017

The International Trade Datasets provide detailed monthly and annual statistics on trade between the United States and its international trade partners.

Preview New Data Dissemination on [Data.census.gov](https://data.census.gov)



Explore Census Data

The Census Bureau serves as the leading source of quality data about the nation's people and economy.

I'm looking for...



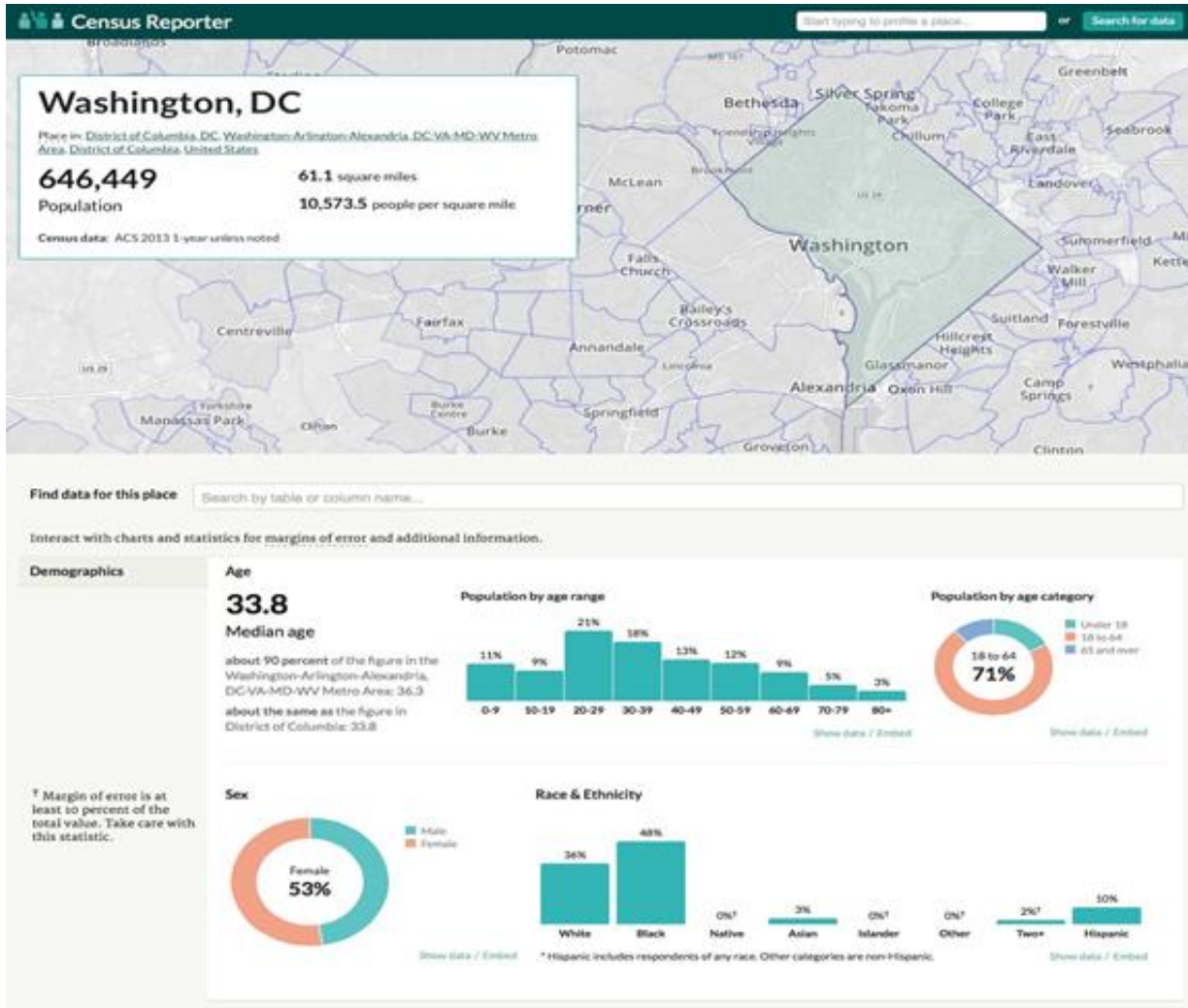
Help us build this experience

Your input is important as we develop this platform. Start searching and let us know how we can make your experience better.

Email feedback to: cedsci.feedback@census.gov

*For official statistics, continue to use existing data tools on census.gov, such as American FactFinder

Census Reporter



When to use:
Place profiles and comparison pages provide a friendly interface for navigating data, including visualizations for a more useful first look. Census Reporter also offers handy tools for data comparison and makes it easy to create exports for further analysis in tabular or GIS formats.

censusreporter.org

Source Us!


U.S. Census Bureau's 2016 American Community Survey

#ACSdata

@uscensusbureau



America's Ongoing Love Affair With the Car
CityLab - Aug 17, 2015
But the latest report on commuting habits from the U.S. Census Bureau ... is based on data from the 2013 American Community Survey (ACS).



DH [DataHaven](#)
@ctdata

DYK about [@uscensusbureau](#) [#ACSdata](#):
300K address interviews/month
>300 fed uses, \$400B/yr allocated based on
11 billion estimates
[#acsconf17](#)

Continue the Conversation #ACsdata



Sign up for and manage alerts at
<https://public.govdelivery.com/accounts/USCENSUS/subscriber/new>



More information on the
American Community Survey:
<https://www.census.gov/acs>



Census (Non-media inquiries)
800-923-8282

Public Information Office (Media)
301-763-3030



facebook.com/uscensusbureau



twitter.com/uscensusbureau



youtube.com/user/uscensusbureau



instagram.com/uscensusbureau



pinterest.com/uscensusbureau



linkedin.com/company/us-census-bureau

Resources: Need Assistance?

U.S. Census Bureau
Data Dissemination Specialist (DDS)



Eric Coyle

(702) 236-3202

eric.a.coyle@census.gov



Additional Assistance:

Toll-free number:

1-844-ASK-DATA (1-844-275-2342)

census.askdata@census.gov

Questions?

