

# Monthly Economic Indicators: December 2020 Highlights

Compiled by the Research and Economic Analysis Division, DBEDT

## Labor Market

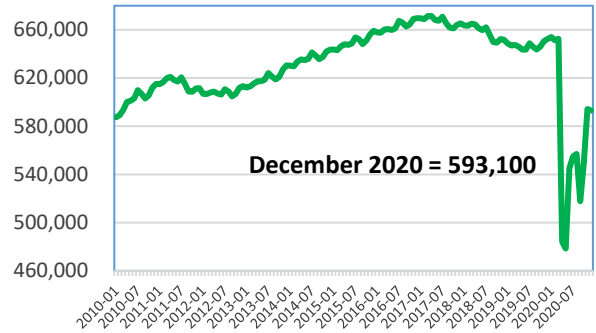
The civilian labor force was 651,700 in December 2020, a decline of 15,650 or 2.3 percent from the same month in 2019, reflecting the economic impact of COVID-19 in Hawaii. Civilian employment recorded 593,100 people at work in December 2020, 59,250 fewer than the same month last year, for a decline of 9.1 percent.

The December 2020 not seasonally adjusted (NSA) unemployment rate was 9.0 percent, 6.8 percentage points higher than December 2019. The U.S. NSA unemployment rate for December 2020 was 6.5 percent, 3.1 percentage points higher than the 3.4 percent recorded for December 2019. At 9.0 percent, Hawaii tied with Nevada for highest December 2020 NSA unemployment rate among the 50 states and District of Columbia.

The total number of non-agriculture wage and salary jobs in December 2020 was 578,000, 13.5 percent lower and 90,200 jobs fewer than December 2019. December 2020 YTD was 572,700 jobs or 82,000 fewer and 12.7 percent lower than December 2019 YTD.

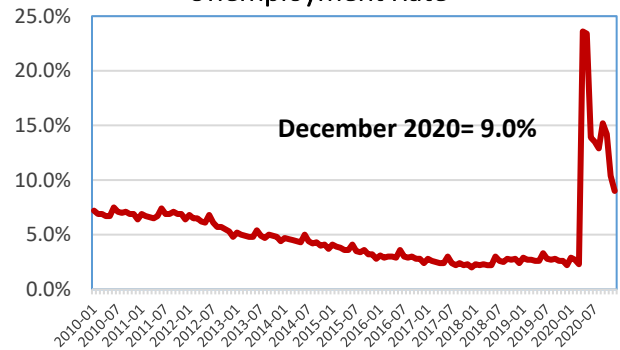
There were 4,109 average weekly initial unemployment claims in December 2020. It was an increase of 2,888 or 236.5 percent compared with December 2019, but about the same number as claimed in November 2020.

Civilian Employed



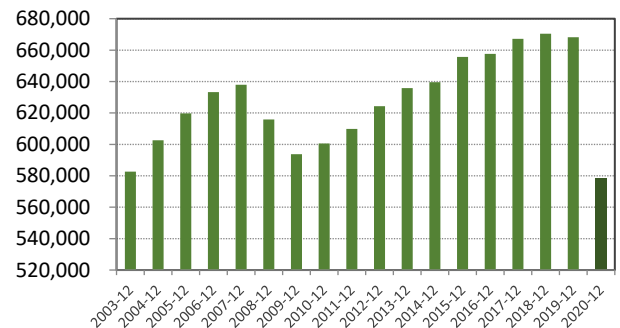
Source: Hawaii Dept. of Labor & Industrial Relations.

Unemployment Rate



Source: Hawaii Dept. of Labor & Industrial Relations

Total Non-agric. W & S jobs: December



Source: Hawaii Dept. of Labor & Industrial Relations

### Building Permits

The total value of private building permits issued in December 2020 was \$297.6 million or 21.9 percent higher than December 2019.

Permit activities in December 2020 were positive as compared to December 2019. Increases were seen in Residential permits of 43.3 percent, Commercial & industrial permits of 32.0 percent, and Additions & alterations permits of 6.5 percent as compared to December 2019.

### State Tax Revenue

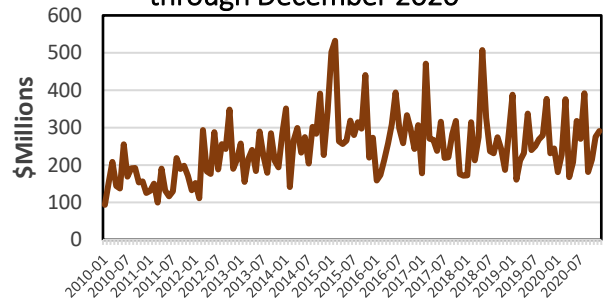
State general fund revenue was \$570.3 million for a decrease of 2.2 percent from December 2019 to December 2020 and a decline of 12.0 percent from December 2019 YTD to December 2020 YTD.

General excise and use tax revenue declined to \$241.5 million or 15.1 percent from December 2019 to December 2020 and declined 15.6 percent from December 2019 YTD to December 2020 YTD.

Individual income tax revenue (net of refunds) was \$231.0 million for an increase of 6.3 percent from December 2019 to December 2020 and a decline of 3.2 percent from December 2019 YTD to December 2020 YTD.

The transient accommodations tax revenue was \$13.8 million and remains the tax category hardest hit by the pandemic with a decline of 70.2 percent from December 2019 to December 2020 and 55.8 percent from December 2019 YTD to December 2020 YTD.

Value of Private Building Permits through December 2020



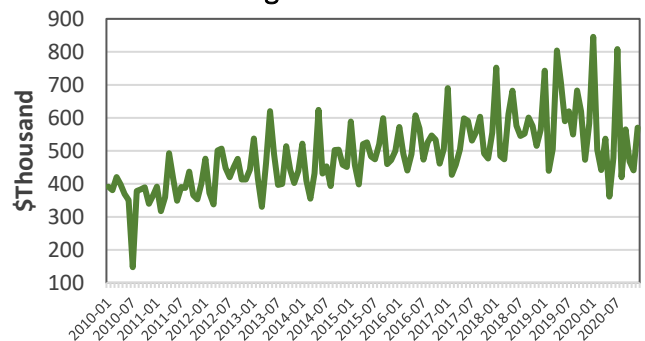
Source: County Building Dept. & U.S. Census Bureau.

Value of Private Building Permits

Category	December 2019 (\$mil)	December 2020 (\$mil)	Change (%)
<b>Total</b>	<b>244.1</b>	<b>297.6</b>	<b>21.9</b>
Residential	62.9	90.1	43.3
Comm. & industrial	56.8	74.9	32.0
Add'n & alterations	124.5	132.6	6.5

Source: County building depts. & U.S. Census Bureau.

State general fund revenue



Source: Hawaii Dept. of Taxation

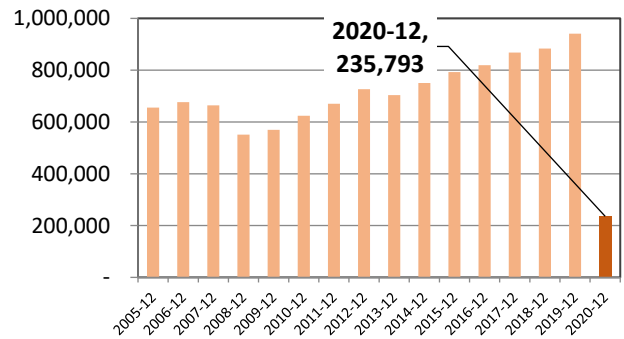
## Visitor Arrivals and Spending

In December 2020, Hawaii visitor arrivals totaled 235,793 all of whom arrived by air. This reflected an increase of 52,014 visitor arrivals over the month previous.

Visitor arrivals by air declined by 74.9 percent, days declined by 66.7 percent for December 2020 compared to December 2019. Complete expenditure data are not available (NA) for April 2020 through December 2020. December 2020 expenditures are for U.S. visitors only.

December 2020 visitors by-air from the U.S. mainland accounted for 94.8 percent of the total by-air visitors, with U.S. West at 64.5 percent and U.S. East at 30.3 percent. Japanese visitors accounted for 0.8 percent of the total, Canada 1.6 percent.

### Visitor Arrivals by Air (Dec.)

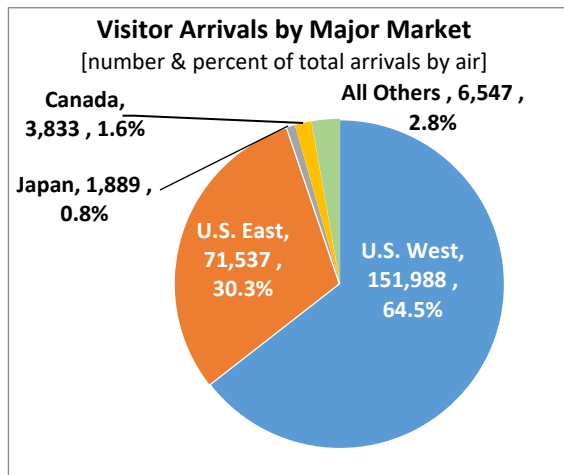


### Visitor Market at Glance (by air only)

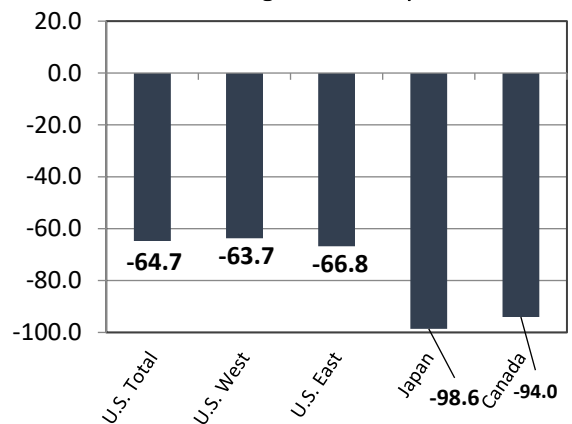
Category	December 2019	December 2020	% Chg.
Visitor arrivals	941,128	235,793	-74.9
Visitor days	8,779,507	2,922,679	-66.7
Visitor expenditure (\$mil)	1,747.8	(NA)	(NA)
Avg. length of stay (days)	9.33	12.40	32.9
PPPD (\$)	199.1	(NA)	(NA)

NA Not available. Source: Hawaii Tourism Authority.

### Visitor Arrivals by Major Markets (by air only), December 2020



### % Change from last year



Monthly Economic Indicators Main Page:

<http://dbedt.hawaii.gov/economic/mei/>

Current Economic Conditions Charts:

[http://dbedt.hawaii.gov/economic/current\\_economic\\_conditions/](http://dbedt.hawaii.gov/economic/current_economic_conditions/)

Download Data Online from DBEDT Data Warehouse:

<http://dbedt.hawaii.gov/economic/datawarehouse/>