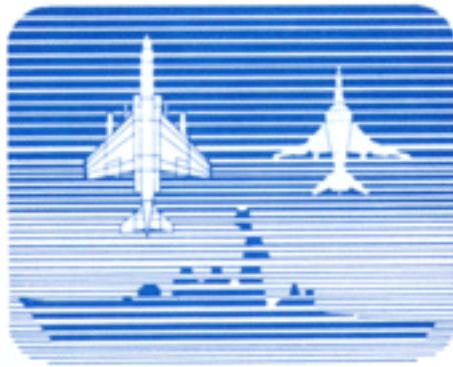




# QUARTERLY STATISTICAL & ECONOMIC REPORT



*March 1999*



This *Quarterly Statistical and Economic Report* has been prepared by the staff of the Research and Economic Analysis Division of the State Department of Business, Economic Development & Tourism (DBEDT). The report provides concise statistical information and analyses on Employment, Income and Prices, Taxes, Tourism, and Construction, as well as an overview of the State of Hawaii and the four counties.

Director, Dr. Seiji F. Naya, heads the department. This report was prepared under the direction of the division administrator, Dr. Pearl Imada Iboshi.

Technical notes and source descriptions have been kept to a minimum. However, the staff of the Research and Economic Analysis Division would be happy to respond to any inquiries of a technical nature that readers may have (586-2466). The quarterly information contained in this report reflects data received by the Research Division on or before March 19, 1999.

#### On-line availability of *Quarterly Statistical and Economic Report*

Since 1988, the Hawaii Department of Business, Economic Development & Tourism has had the *State of Hawaii Data Book* available on-line to anyone with a personal computer and a modem. Since 1997, the *Quarterly Statistical and Economic Report*, *State of Hawaii Data Book* and other DBEDT publications and information have been made available over the Internet at <http://www.hawaii.gov/dbedt/index.html>.

For further information about available data and sources, users should call the Research and Economic Analysis Division's Business Resource Center at (808) 586-2424.

This report has been catalogued as follows:

Hawaii. Dept. of Business, Economic Development and Tourism. Research and Economic Analysis Division.

Quarterly statistical and economic report-State of Hawaii. Honolulu: 1975-

Quarterly.

1. Hawaii-Statistics.  
HA4007.H359

# TABLE OF CONTENTS

## Part I. Economic Trends and Outlook

State of the Economy .....	1
Figure 1. Annual Growth in Personal Income .....	2
Outlook of the Economy.....	3
Actual and Forecast Key Economic Indicators for Hawaii: 1997-2002 .....	4
County Economic Conditions .....	5
Table 1. 1998 Selected Economic Activities: State .....	6
Table 2. 1998 Selected Economic Activities: City and County of Honolulu .....	7
Table 3. 1998 Selected Economic Activities: Hawaii County.....	8
Table 4. 1998 Selected Economic Activities: Maui County .....	9
Table 5. 1998 Selected Economic Activities: Kauai County .....	10

## Part II. Economic Overview and Data

A. Labor Force and Jobs.....	11
A-1. Civilian Labor Force .....	12
A-2. Civilian Employment .....	13
A-3. Civilian Unemployment .....	14
A-4. Civilian Unemployment Rate .....	15
A-5. Non-Agricultural Wage and Salary Jobs .....	16
A-6. Construction Jobs.....	17
A-7. Manufacturing Jobs.....	18
A-8. Transportation Jobs.....	19
A-9. Communication Jobs .....	20
A-10. Utilities Jobs .....	21
A-11. Retail Trade Jobs .....	22
A-12. Wholesale Trade Jobs.....	23
A-13. Finance, Insurance and Real Estate Jobs .....	24
A-14. Services Jobs.....	25
A-15. Hotel Jobs .....	26
A-16. Federal Government Jobs.....	27
A-17. State Government Jobs .....	28
A-18. Local Government Jobs .....	29
A-19. Agriculture Wage and Salary Jobs .....	30
A-20. Initial Agent Claims for Unemployment .....	31
A-21. Initial Liable Claims for Unemployment.....	32
B. Income and Prices .....	33
B-1. Personal Income for Hawaii by Major Sources .....	34
B-2. Personal Income.....	35
B-3. Wages and Salaries.....	36
B-4. Other Labor Income.....	37
B-5. Proprietors' Income .....	38
B-6. Dividends, Interest, and Rent.....	39
B-7. Transfer Payments .....	40
B-8. Personal Contributions to Social Insurance.....	41
B-9. Honolulu and U.S. Consumer Price Index, All Urban Consumers (CPI-U) ...	42

## TABLE OF CONTENTS – Con.

C. Tax Revenues .....	43
Figure 2. Annual Growth in General Fund Revenue .....	44
C-1. General Fund Tax Revenues and Major Components .....	45
C-2. State General Fund Tax Revenues .....	46
C-3. General Excise & Use Tax Revenues .....	47
C-4. Net Individual Income Tax Revenues .....	48
C-5. Declaration of Estimated Taxes - Individual .....	49
C-6. Payment with Returns - Individual .....	50
C-7. Withholding Tax on Wages - Individual .....	51
C-8. Refunds - Individual .....	52
C-9. Net Corporate Income Tax Revenues .....	53
C-10. Declaration of Estimated Taxes - Corporate .....	54
C-11. Payment with Returns – Corporate .....	55
C-12. Refunds – Corporate .....	56
C-13. Transient Accommodations Tax Revenues .....	57
Figure 3. Transient Accommodations Tax Revenues .....	58
D. Tourism .....	59
D-1. Visitor Arrivals and Average Daily Visitor Census .....	60
D-2. Total Visitor Arrivals .....	61
D-3. Westbound Visitor Arrivals .....	62
D-4. Eastbound Visitor Arrivals .....	63
D-5. Average Daily Visitor Census .....	64
D-6. Average Length of Stay in Hawaii .....	66
D-7. Hotel Occupancy Rate .....	68
E. Construction .....	69
E-1. Estimated Value of Completed Construction, New Private Building Authorizations, and Government Contracts Awarded .....	70
E-2. Single Family Units Authorized .....	72
E-3. Multi-Family Units Authorized .....	73
E-4. Honolulu Construction Cost Index: Single Family Residence .....	74
E-5. Honolulu Construction Cost Index: High-Rise Building .....	75
E-6. Estimated Value of Private Building Construction Authorizations, By County .....	76
E-7. Residential Sales: Single Family and Condominiums .....	78
Figure 4. Residential Sales: Single Family and Condominiums .....	79
E-8. State Government Capital Improvement Project Expenditures .....	80
F. Other Indicators .....	81
F-1. Bankruptcy Filings .....	82
<b>Part III. Terms and Definitions .....</b>	<b>84</b>

## STATE OF THE ECONOMY

Measures of economic activity continued to indicate weakness in Hawaii in the fourth quarter. But in many cases, rates of decline were slower than expected. Some indicators, such as real personal income and gross state product were actually higher than expected because of declines in the average price level.

Labor market indicators continued to send mixed signals. While civilian employment grew by 0.2 percent from 1997 to 1998, and unemployment fell by 0.2 percentage points over the year, the number of nonagricultural wage and salary jobs fell by 0.3 percent (Table 1). The dichotomy may indicate a change in the structure of employment in Hawaii toward more self-employment.

Personal income grew at 1.6 percent in from the third quarter of 1997 to the third quarter of 1998 (the latest data available from the U.S. Bureau of Economic Analysis) (Table B-2). For the year, the rate of growth is on course for a 2.1 percent increase over 1997. However, because the price level, as measured by the Honolulu consumer price index, actually fell for 1998, inflation-adjusted personal income is estimated to have grown by a slightly higher 2.3 percent.

While state general fund tax revenues grew by a relatively modest 0.9 percent for the fourth quarter of 1998 from the year-earlier quarter, revenues for the calendar year ended 4.8 percent higher than in 1997. Some of this growth was due to technical changes to income tax laws in previous years, but there is some evidence of increased economic activity as well (for example, the 2.0 percent increase between 1997 and 1998 in withholding taxes on wages).

The visitor industry continues to suffer from the Asian economic crisis however.

Total visitor arrivals fell by 2.9 percent from the fourth quarter of 1997 to the fourth quarter of 1998 (Table 1). They were down 1.9 percent for 1998 overall. All of the reduction has come from eastbound visitors. For the year, eastbound arrivals were 10.8 percent lower than in 1997. These declines are also reflected in lower hotel occupancy rates, with average rates off by 2 percentage points in 1998 relative to 1997 (Table D-7).

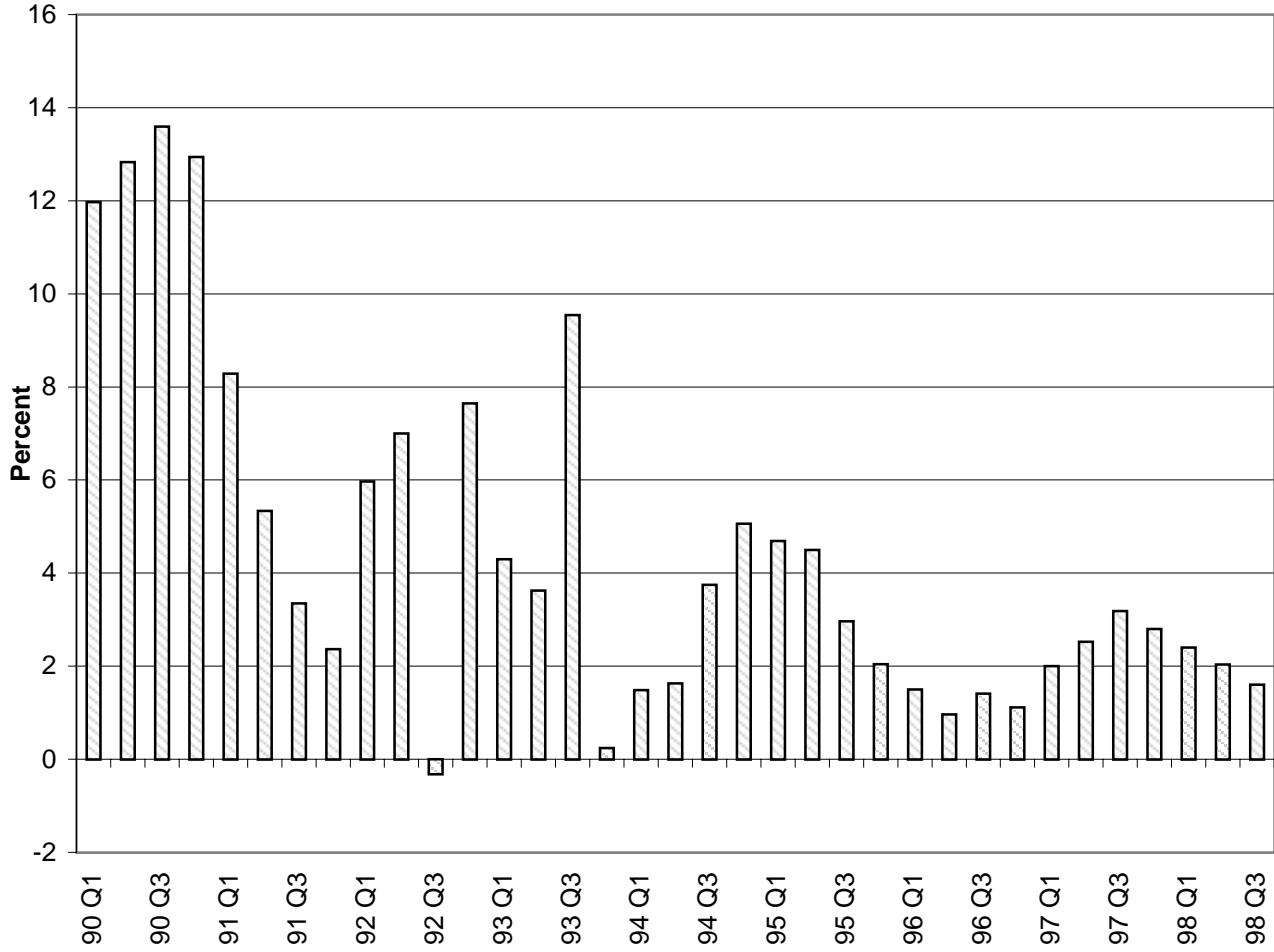
On the other hand, westbound visitor arrivals have been strong. The number of westbound arrivals expanded by 5.1 percent from the fourth quarter of 1997 to the fourth quarter of 1998 and were up 4.1 percent for 1998 overall. Moreover, both eastbound and westbound lengths of stay have been rising in recent months (Table D-6).

Private construction activity may be starting to pick up. The value of private building authorizations rose by 11.0 percent in the City and County of Honolulu from the fourth quarter of 1997 to the fourth quarter of 1998 (Table E-6). In Kauai County, private authorizations expanded by 17.2 percent. Nevertheless, in both counties private authorizations were lower than in 1997. State capital improvement projects have continued to grow, however. For 1998 as a whole, state CIP spending expanded by 6.2 percent. Much of this growth was for school and road construction.

Finally, bankruptcy filings grew by 24.9 percent from the fourth quarter of 1997 through the fourth quarter of 1998 and by 30.6 percent for the year as a whole relative to 1997 (Table F-1). While disturbingly high, these growth rates are lower than those experienced in 1996 and 1997.

**Figure 1. Annual Growth in Personal Income**

[percentage change from the same period in previous year]



Source: Table B-2. Personal Income.

## OUTLOOK OF THE ECONOMY

To some extent DBEDT's December 1998 forecast for economic growth in the year was too low. While the economy performed better than expected in 1998, concerns about continuing problems in Asia, and a potential slowing of growth on the Mainland, have led the Department to leave its forecast for the next several years essentially unchanged.

DBEDT's December 1998 forecast of real personal income growth was 1.8 percent. Through the third quarter of 1998 (the latest available data), the actual real growth rate is estimated at 2.3 percent, reflecting slightly higher growth in nominal personal income and an actual decline in the average price level of 0.2 percent (deflation). For the same reasons, real gross state product growth of 1.8 percent was expected in December, but the actual growth rate should be closer to 2.2 percent. On the other hand, visitor arrivals fell more than expected in 1998—by 1.9 percent, rather than by the 1.6 percent forecast in December.

Some of the strength is probably due to growth on the Mainland. The U.S. economy grew by a remarkable 4.3 percent in real terms in 1998. The March 10, 1999, *Blue Chip Economic Indicators* reports a consensus forecast of 3.3 percent growth in 1999 and 2.2 percent growth in 2000. Inflation, as measured by the Consumer price index, is expected at 1.9 percent in 1999 and 2.3 percent in 2000.

Growth is also expected to remain healthy in California. The December 1998 issue of *The UCLA Anderson Forecast* reported expected real personal income growth of 3.1 percent in 1999 and 3.0 percent in 2000. Similarly, employment is expected to grow by 2.3 percent, then, by 2.6 percent.

Yet problems remain in Asia. *The Blue Chip Economic Indicators* reports a consensus forecast of -0.8 percent growth in real Japanese gross domestic product in 1999 and 1.0 percent growth in 2000. By comparison, *Consensus Forecasts-USA* reports expected real growth in Japan of -1.1 percent in 1999 and 0.2 percent in 2000.

The *Blue Chip* forecasts slightly positive 1999 growth in South Korea (0.8 percent), but negative growth in Hong Kong (-0.8 percent), and Brazil (-3.5 percent). For 2000, growth should improve: South Korea at 3.2 percent, Hong Kong at 2.4 percent, and Brazil at 0.5 percent.

The value of the yen, an important factor for Japanese visitors to Hawaii, currently stands at 119 per dollar. The latest *Blue Chip* forecast for 1999 is 123.0 and 118.4 for 2000. For comparison, the *Consensus Forecasts* projected rate is 117.2 in May 1999 and 120.4 in February 2000. Although a stronger yen would help strengthen Hawaii's economy, it is some comfort that prevailing forecasts do not see a significantly weaker yen.

The following table contains DBEDT's latest forecast for Hawaii's economy through 2002. Visitor arrivals are expected to grow modestly this year and to accelerate in 2000 and beyond. DBEDT does not expect the recent period of deflation to continue and therefore anticipates some decline in the rate of growth of real personal income and gross state product. These rates should remain above 1.0 percent for the next two years. Wage and salary jobs should begin to grow modestly this year with some increase in growth rates in 2000.

**ACTUAL AND FORECAST KEY ECONOMIC INDICATORS FOR HAWAII:  
1997 TO 2002**

<i>Economic Indicators</i>	<i>1997 (actual)</i>	<i>1998 (actual)</i>	<i>1999 (forecast)</i>	<i>2000 (forecast)</i>	<i>2001 (forecast)</i>	<i>2002 (forecast)</i>
Total population (in thousands)	1,192.1	1,193.0	1,198.0	1,205.6	1,213.0	1,220.1
Visitor arrivals (in thousands)	6,876.1	6,743.1	6,790.3	6,865.0	6,940.6	7,023.8
Honolulu CPI-U (1982-84=100)	171.9	171.5	172.4	174.1	176.3	178.6
Personal income (in million dollars)	30,478.8	31,111.2p	31,758.0	32,424.2	33,107.7	33,836.1
Personal income (in \$1987 million)	20,372.4	20,843.6p	21,171.1	21,401.2	21,571.9	21,763.5
Total wage & salary jobs (in thousands)	538.7	537.7	538.2	541.4	544.7	547.9
Gross state product (in million dollars)	34,238.6	34,914.8p	35,634.3	36,391.2	37,177.0	37,980.5
Real gross state product (in \$1987 million)	23,859.7	24,389.2p	24,774.8	25,073.7	25,319.0	25,556.7
Gross state product deflator (1987=100)	143.5	143.2	143.8	145.1	146.8	148.6
<b>Annual Percentage Change</b>						
Total population (in thousands)	0.3	0.1	0.4	0.6	0.6	0.6
Visitor arrivals (in thousands)	0.7	-1.9	0.7	1.1	1.1	1.2
Honolulu CPI-U (1982-84=100)	0.7	-0.2	0.5	1.0	1.3	1.3
Personal income (in million dollars)	2.6	2.1p	2.1	2.1	2.1	2.2
Personal income (in \$1987 million)	1.9	2.3p	1.6	1.1	0.8	0.9
Total wage & salary jobs (in thousands)	0.1	-0.2	0.1	0.6	0.6	0.6
Gross state product (in million dollars)	2.2	2.0p	2.1	2.1	2.2	2.2
Real gross state product (in \$1987 million)	1.5	2.2p	1.6	1.2	1.0	0.9
Gross state product deflator (1987=100)	0.6	-0.2	0.5	0.9	1.2	1.2

p Preliminary

Source: Hawaii State Department of Business, Economic Development & Tourism, March 1999.



## COUNTY ECONOMIC CONDITIONS

Neighbor Island counties again generally outperformed Honolulu in the fourth quarter of 1998. Hawaii and Kauai counties, in particular, seem to be enjoying relatively strong growth.

From the fourth quarter of 1997 to the fourth quarter of 1998, all counties experienced growth in the labor force (civilian employed plus unemployed over 16 years of age) and in civilian employment (Tables 2 - 5). Kauai and Maui counties enjoyed the largest increases, with civilian employment rising by 5.9 and 3.2 percent, respectively. For the year as a whole, the labor force and civilian employment declined in Honolulu but rose in Maui and Kauai counties. Hawaii County had a decrease in labor force but an increase in employment.

All counties other than Honolulu also experienced large declines in the number of unemployed in the fourth quarter of 1998 relative to the year-earlier quarter. The largest percentage declines came in Kauai County (-11.9 percent), followed by Maui County (-8.5 percent), and Hawaii County (-5.7 percent). The City & County of Honolulu experienced a fourth quarter 1998 rise of 1.4 percent in the number of unemployed relative to the fourth quarter of 1997. Honolulu was the only county to experience an increase in the number of unemployed for 1998 as a whole over 1997 (0.9 percent).

The number of nonagricultural jobs grew in Kauai County (2.4 percent) and Maui County (1.2 percent) in 1998. Hawaii County and the City and County of Honolulu both experienced job losses over the year.

On Kauai, the largest percentage increase in jobs came in construction (11.1

percent for the year). But the largest numerical increase came in services, followed by retail trade. For 1998, Maui County experienced some increase in construction jobs (2.5 percent), but larger increases in transportation, communications, and utilities (3.9 percent) and a larger numerical increase in services (460 jobs).

Honolulu and Hawaii counties both experienced relatively large reductions in construction jobs in 1998 (-5.8 percent in the City and County of Honolulu and -7.3 percent in Hawaii County). Honolulu also saw job reductions in retail trade (-3.6 percent) and hotels (-4.3 percent). On the other hand, service jobs grew by 1.7 percent in 1998. By contrast, Hawaii County experienced a drop in service-related jobs of -3.2 percent, but retail trade and hotels saw an increase in jobs on the Big Island.

The largest percentage increases in visitor arrivals occurred in Hawaii and Kauai Counties (at 6.6 percent and 3.1 percent, respectively, for 1998 over 1997). Indeed, in the fourth quarter, both counties saw an increase in eastbound arrivals over the year-earlier quarter (29.0 percent in Hawaii County and 9.8 percent in Kauai County). However, only Hawaii County experienced higher eastbound traffic for 1998 overall (12.2 percent).

Maui County experienced a small, 0.1 percent, increase in total visitor arrivals in 1998 over 1997. Eastbound arrivals fell over the period by 13.8 percent, but westbound arrivals were up by 3.6 percent. The City & County of Honolulu experienced a 5.5 percent decline in total visitors for 1998, all of which came from the eastbound market segment. Westbound visitors to Honolulu expanded by 0.6 percent for the year.

**Table 1. 1998 SELECTED ECONOMIC ACTIVITIES: STATE OF HAWAII**

SERIES	UNIT	4th QUARTER 1998		1998 YEAR TO DATE	
		NUMBER	% CHANGE YEAR AGO	NUMBER	% CHANGE YEAR AGO
Civilian labor force 1/	Persons	600,700	1.2	597,050	0.1
Civilian employment	Persons	566,000	1.4	559,750	0.2
Civilian unemployment	Persons	34,700	-2.4	37,300	-2.4
Unemployment rate 2/	%	5.8	-0.2	6.2	-0.2
Total non-agric. wage & salary jobs 1/	Jobs	531,400	-0.4	530,000	-0.3
Contract construction	Jobs	20,700	-7.4	21,250	-4.7
Manufacturing	Jobs	16,200	-1.2	16,300	-1.5
Transport., comm., utilities	Jobs	40,600	-1.6	41,000	-0.7
Trade	Jobs	132,000	-2.1	131,750	-1.9
Retail	Jobs	111,050	-2.3	110,750	-2.3
Finance, insur., & real estate	Jobs	35,450	-1.5	35,500	-1.8
Services & miscellaneous	Jobs	173,400	2.2	171,950	1.6
Hotels	Jobs	37,350	-2.1	37,750	-1.6
Health	Jobs	36,000	3.3	35,500	2.3
Government	Jobs	113,100	0.2	112,200	0.4
Federal	Jobs	30,450	-0.7	30,400	-0.8
State	Jobs	66,200	0.6	64,950	1.1
Local	Jobs	16,500	0.0	16,850	0.6
Agriculture wage & salary jobs 1/	Jobs	7,900	2.6	7,650	6.3
State general fund revenues	\$1,000	692,865	0.9	2,889,291	4.8
General excise and use tax revenues	\$1,000	352,367	2.2	1,436,654	0.3
Income-individual	\$1,000	270,284	-1.5	1,093,241	11.0
Declaration of estimated taxes	\$1,000	29,539	19.1	194,233	16.8
Payment with returns	\$1,000	7,732	-27.0	93,947	28.0
Withholding tax on wages	\$1,000	251,041	-1.0	1,026,866	2.0
Refunds	\$1,000	18,029	25.5	221,805	-15.0
Transient accommodations tax	\$1,000	28,654	-1.8	125,882	-0.8
Visitor arrivals 3/	Persons	1,622,750	-2.9	6,743,140	-1.9
Westbound visitors	Persons	1,050,380	5.1	4,246,610	4.1
Eastbound visitors	Persons	572,370	-14.7	2,496,530	-10.8
Hotel occupancy rates 2/	%	67.5	-2.5	72.0	-2.0

1/ Labor force and jobs are averages based on monthly rounded data. Labor force and jobs data were rebenchmarked in March 1999.

2/ Change represents absolute change in rates rather than percentage change in rates.

3/ Preliminary data. Hawaii Visitors & Convention Bureau revised arrival data for 1997 and 1998 in June 1998.

Source: Hawaii State Department of Labor & Industrial Relations; Hawaii State Department of Taxation; Hawaii Visitors & Convention Bureau; and PKF-Hawaii. Compiled by Hawaii State Department of Business, Economic Development & Tourism.

**Table 2. 1998 SELECTED ECONOMIC ACTIVITIES:  
CITY AND COUNTY OF HONOLULU**

SERIES	UNIT	4th QUARTER 1998		1998 YEAR TO DATE	
		NUMBER	% CHANGE YEAR AGO	NUMBER	% CHANGE YEAR AGO
Civilian labor force 1/	Persons	432,700	1.0	429,050	-0.1
Civilian employment	Persons	410,650	0.9	406,100	-0.2
Civilian unemployment	Persons	22,050	1.4	22,950	0.9
Unemployment rate 2/	%	5.1	0.0	5.4	0.1
Total non-agric. wage & salary jobs 1/	Jobs	400,900	-0.9	400,100	-0.7
Contract construction	Jobs	15,650	-9.5	16,250	-5.8
Manufacturing	Jobs	12,600	-1.2	12,700	-0.8
Transport., comm., utilities	Jobs	32,100	-2.9	32,600	-2.0
Trade	Jobs	96,600	-3.3	96,650	-3.0
Retail	Jobs	79,350	-3.7	79,350	-3.6
Finance, insur., & real estate	Jobs	28,300	-2.5	28,400	-2.2
Services & miscellaneous	Jobs	124,700	2.3	123,350	1.7
Hotels	Jobs	16,550	-4.6	16,800	-4.3
Health	Jobs	29,400	3.6	29,050	2.7
Government	Jobs	90,950	0.1	90,150	0.4
Federal	Jobs	28,750	-0.4	28,750	-0.5
State	Jobs	51,000	0.7	49,850	1.0
Local	Jobs	11,200	-1.0	11,550	0.4
Agriculture wage & salary jobs 1/	Jobs	2,350	11.0	2,300	15.0
General excise and use tax revenues	\$1,000	294,981	0.4	1,198,141	-0.6
Income-individual	\$1,000	236,279	-2.8	961,597	9.9
Declaration of estimated taxes	\$1,000	23,806	12.5	152,224	16.2
Payment with returns	\$1,000	5,764	-36.3	73,246	28.5
Withholding tax on wages	\$1,000	221,529	-1.2	908,276	1.9
Refunds	\$1,000	14,819	30.2	172,149	-15.8
Transient accommodations tax	\$1,000	22,086	-10.1	100,169	0.6
Visitor arrivals 3/	Persons	1,127,780	-7.1	4,741,130	-5.5
Westbound visitors	Persons	571,680	3.8	2,292,550	0.6
Eastbound visitors	Persons	556,100	-16.2	2,448,580	-10.6
Hotel occupancy rates 2/	%	68.9	-5.8	73.8	-4.8

1/ Labor force and jobs are averages based on monthly rounded data. Labor force and jobs data were rebenchmarked in March 1999.

2/ Change represents absolute change in rates rather than percentage change in rates.

3/ Preliminary data. Hawaii Visitors & Convention Bureau revised arrival data for 1997 and 1998 in June 1998.

Source: Hawaii State Department of Labor & Industrial Relations; Hawaii State Department of Taxation; Hawaii Visitors & Convention Bureau; and PKF-Hawaii. Compiled by Hawaii State Department of Business, Economic Development & Tourism.

**Table 3. 1998 SELECTED ECONOMIC ACTIVITIES: HAWAII COUNTY**

SERIES	UNIT	4th QUARTER 1998		1998 YEAR TO DATE	
		NUMBER	% CHANGE YEAR AGO	NUMBER	% CHANGE YEAR AGO
Civilian labor force 1/	Persons	68,400	0.2	68,700	-0.4
Civilian employment	Persons	62,600	0.9	62,050	0.2
Civilian unemployment	Persons	5,800	-5.7	6,650	-5.7
Unemployment rate 2/	%	8.5	-0.5	9.7	-0.5
Total non-agric. wage & salary jobs 1/	Jobs	48,950	-0.9	49,050	-0.3
Contract construction	Jobs	1,650	-19.5	1,900	-7.3
Manufacturing	Jobs	1,450	-6.5	1,500	-6.3
Transport., comm., utilities	Jobs	2,800	1.8	2,800	5.7
Trade	Jobs	13,200	1.5	13,000	1.2
Retail	Jobs	11,450	2.2	11,250	1.4
Finance, insur., & real estate	Jobs	2,800	9.8	2,700	3.8
Services & miscellaneous 3/	Jobs	16,600	-3.8	16,700	-3.2
Hotels	Jobs	6,450	-2.3	6,600	0.8
Health	Jobs	2,900	3.6	2,750	0.0
Government	Jobs	10,500	1.9	10,400	1.5
Federal	Jobs	900	0.0	900	0.0
State	Jobs	7,350	2.1	7,300	2.1
Local	Jobs	2,250	2.3	2,250	2.3
Agriculture wage & salary jobs 1/	Jobs	2,500	-13.8	2,500	2.0
General excise and use tax revenues	\$1,000	21,236	2.6	90,758	2.2
Income-individual	\$1,000	13,816	1.4	55,329	14.8
Declaration of estimated taxes	\$1,000	2,459	48.0	17,397	14.9
Payment with returns	\$1,000	744	28.4	8,915	18.0
Withholding tax on wages	\$1,000	11,795	-5.8	47,935	4.9
Refunds	\$1,000	1,182	4.6	18,918	-6.4
Transient accommodations tax	\$1,000	1,270	-13.5	7,156	-1.1
Visitor arrivals 4/	Persons	326,290	12.2	1,285,550	6.6
Westbound visitors	Persons	243,910	7.5	959,750	4.8
Eastbound visitors	Persons	82,380	29.0	325,800	12.2
Hotel occupancy rates 2/	%	62.0	1.2	68.2	2.8

1/ Labor force and jobs are averages based on monthly rounded data. Labor force and jobs data were rebenchmarked in March 1999.

2/ Change represents absolute change in rates rather than percentage change in rates.

3/ Business service jobs for 1997 were overcounted for Hawaii County and undercounted for Honolulu.

4/ Preliminary data. Hawaii Visitors & Convention Bureau revised arrival data for 1997 and 1998 in June 1998.

Source: Hawaii State Department of Labor & Industrial Relations; Hawaii State Department of Taxation; Hawaii Visitors & Convention Bureau; and PKF-Hawaii. Compiled by Hawaii State Department of Business, Economic Development & Tourism.

**Table 4. 1998 SELECTED ECONOMIC ACTIVITIES: MAUI COUNTY**

SERIES	UNIT	4th QUARTER 1998		1998 YEAR TO DATE	
		NUMBER	% CHANGE YEAR AGO	NUMBER	% CHANGE YEAR AGO
Civilian labor force 1/	Persons	70,100	2.4	70,200	1.1
Civilian employment	Persons	65,800	3.2	65,400	1.8
Civilian unemployment	Persons	4,300	-8.5	4,800	-7.7
Unemployment rate 2/	%	6.1	-0.7	6.8	-0.7
Total non-agric. wage & salary jobs 1/	Jobs	55,600	1.3	55,700	1.2
Contract construction	Jobs	2,200	4.8	2,050	2.5
Manufacturing	Jobs	1,750	2.9	1,750	-2.8
Transport., comm., utilities	Jobs	4,000	3.9	3,950	3.9
Trade	Jobs	14,950	-0.7	15,100	0.3
Retail	Jobs	13,550	-0.7	13,700	0.0
Finance, insur., & real estate	Jobs	3,050	1.7	3,050	1.7
Services & miscellaneous	Jobs	22,200	2.1	22,350	2.1
Hotels	Jobs	10,700	-0.9	10,800	-0.5
Health	Jobs	2,350	6.8	2,300	4.5
Government	Jobs	7,500	0.0	7,500	0.0
Federal	Jobs	550	10.0	500	0.0
State	Jobs	5,150	-1.0	5,150	1.0
Local	Jobs	1,800	0.0	1,850	-2.6
Agriculture wage & salary jobs 1/	Jobs	2,050	13.9	2,000	2.6
General excise and use tax revenues	\$1,000	27,183	19.0	111,662	6.7
Income-individual	\$1,000	14,392	10.1	56,213	22.7
Declaration of estimated taxes	\$1,000	2,112	31.5	18,032	18.6
Payment with returns	\$1,000	849	40.6	8,301	35.0
Withholding tax on wages	\$1,000	12,898	7.4	51,285	2.7
Refunds	\$1,000	1,468	27.1	21,405	-15.9
Transient accommodations tax	\$1,000	4,502	87.1	15,301	-3.9
Visitor arrivals 3/	Persons	562,560	-0.6	2,354,850	0.1
Westbound visitors	Persons	473,100	6.2	1,947,060	3.6
Eastbound visitors	Persons	29,820	-25.6	407,790	-13.8
Hotel occupancy rates 2/ 4/	%	69.6	2.4	72.8	0.9

1/ Labor force and jobs are averages based on monthly rounded data. Labor force and jobs data were rebenchmarked in March 1999.

2/ Change represents absolute change in rates rather than percentage change in rates.

3/ Preliminary data. Hawaii Visitors & Convention Bureau revised arrival data for 1997 and 1998 in June, 1998.

4/ Data represent Maui Island only.

Source: Hawaii State Department of Labor & Industrial Relations; Hawaii State Department of Taxation; Hawaii Visitors & Convention Bureau; and PKF-Hawaii. Compiled by Hawaii State Department of Business, Economic Development & Tourism.

**Table 5. 1998 SELECTED ECONOMIC ACTIVITIES: KAUAI COUNTY**

SERIES	UNIT	4th QUARTER 1998		1998 YEAR TO DATE	
		NUMBER	% CHANGE YEAR AGO	NUMBER	% CHANGE YEAR AGO
Civilian labor force 1/	Persons	29,500	3.9	29,050	1.2
Civilian employment	Persons	26,900	5.9	26,200	2.7
Civilian unemployment	Persons	2,600	-11.9	2,850	-12.3
Unemployment rate 2/	%	8.8	-1.6	9.8	-1.5
Total non-agric. wage & salary jobs 1/	Jobs	24,350	4.1	23,850	2.4
Contract construction	Jobs	1,150	27.8	1,000	11.1
Manufacturing	Jobs	400	0.0	400	0.0
Transport., comm., utilities	Jobs	1,600	0.0	1,600	0.0
Trade	Jobs	6,900	3.8	6,750	3.1
Retail	Jobs	6,450	4.0	6,300	3.3
Finance, insur., & real estate	Jobs	1,250	-3.8	1,250	-10.7
Services & miscellaneous	Jobs	9,100	7.1	8,850	4.7
Hotels	Jobs	3,600	5.9	3,550	4.4
Health	Jobs	1,450	0.0	1,450	3.6
Government	Jobs	3,950	-1.3	3,950	0.0
Federal	Jobs	400	0.0	350	-12.5
State	Jobs	2,550	-1.9	2,550	0.0
Local	Jobs	1,000	0.0	1,050	0.0
Agriculture wage & salary jobs 1/	Jobs	850	0.0	850	6.3
General excise and use tax revenues	\$1,000	8,968	20.8	36,093	5.9
Income-individual	\$1,000	5,797	23.1	20,102	28.1
Declaration estimated taxes	\$1,000	1,162	205.2	6,581	34.9
Payment with returns	\$1,000	374	5.1	3,484	31.0
With holding tax on wages	\$1,000	4,820	3.1	19,370	2.3
Refunds	\$1,000	560	-20.4	9,333	-13.4
Transient accommodations tax	\$1,000	797	7.6	3,256	-21.7
Visitor arrivals 3/	Persons	262,990	9.8	1,038,830	3.1
Westbound visitors	Persons	228,490	9.7	906,330	5.8
Eastbound visitors	Persons	34,500	9.8	132,500	-12.3
Hotel occupancy rates 2/	%	63.5	-3.1	67.0	-0.1

1/ Labor force and jobs are averages based on monthly rounded data. Labor force and jobs data were rebenchmarked in March 1999.

2/ Change represents absolute change in rates rather than percentage change in rates.

3/ Preliminary data. Hawaii Visitors & Convention Bureau revised arrival data for 1997 and 1998 in June, 1998.

Source: Hawaii State Department of Labor & Industrial Relations; Hawaii State Department of Taxation; Hawaii Visitors & Convention Bureau; and PKF-Hawaii. Compiled by Hawaii State Department of Business, Economic Development & Tourism.

## A. LABOR FORCE AND JOBS

The number of jobs in Hawaii continued to fall in the fourth quarter. However the recent annual rebenchmarking of labor data by the Department of Labor and Industrial Relations and the U.S. Bureau of Labor Statistics indicates that the rate of decline was slower than expected. An alternative indicator, civilian employment, continued expanding but at a lower rate than recently.

The latest data show nonagricultural wage and salary jobs fell by 0.4 percent from fourth quarter of 1997 to 1998 (Table A-5). In 1998 these jobs declined by 0.3 percent, significantly better than the 0.8 percent rate of decline as in *QSER, December 1998*.

This rebenchmarking incorporates newly available data and generally affects the previous two years. The nonagricultural job increase of 0.2 percent from 1996 to 1997 was revised down to 0.1 percent. The overall effect of this year's revision has been to lower both the estimated job increase in 1997 and the job decrease in 1998. At 530,000 nonagricultural wage and salary jobs, Hawaii is slightly ahead of the level reached in 1990.

The rebenchmarking also lowered the estimated growth in labor force-related data. The civilian labor force is estimated to have grown by 0.1 percent from 1997 to 1998 (Table A-1). Similarly, civilian employment grew by 0.2 percent (Table A-2). Both rates of growth are lower than anticipated from the data available prior to rebenchmarking.

In contrast to previous years, retail trade, not construction, led industries with job losses. Comparing fourth quarters, there was a 2.3 percent decline in retail trade jobs from 1997 to 1998 (Table A-11). The same rate of job loss applied for 1998 over 1997. Retail jobs have been falling for the last six

quarters—just as eastbound visitor arrivals have been for the last seven (Table D-4).

Construction jobs fell 7.4 percent between fourth-quarters of 1997 and 1998 (Table A-6). In 1998, construction jobs were down 4.7 percent. At 21,250 construction jobs are about the same level as in 1987.

Other industries experiencing 1997-to-1998 job losses were manufacturing (-1.5 percent, Table A-7), transportation (-1.0 percent, Table A-8), utilities (-2.8 percent, Table A-10), finance, insurance, and real estate (-1.8 percent, Table A-13), and hotels (-1.6 percent, Table A-15).

Jobs in the services grew by 2.2 percent fourth-quarter of 1997 to fourth-quarter 1998 and by 1.6 percent for 1998 (Table A-14). This was in spite of the decline in hotel jobs (a subset of services data). Indeed, services jobs have expanded in every quarter for three years. This suggests that the economy is restructuring—not merely shrinking.

Other industries that gained jobs in 1998 were communications (1.5 percent, Table A-9) and wholesale trade (0.2 percent, Table A-12). Agricultural wage and salary jobs also expanded by 2.6 percent comparing fourth-quarters 1997 to 1998 and by a remarkable 6.3 percent for 1998 as a whole (Table A-19).

In government, federal jobs declined while both state and local jobs increased in 1998 (Tables A-16 through A-18).

Claims for unemployment compensation by newly arrived unemployed workers against another state (Table A-20) and by unemployed workers who have moved from Hawaii against Hawaii (Table A-21) continued to fall.

**Table A-1. CIVILIAN LABOR FORCE**

<i>Year</i>	<i>First Quarter</i>	<i>Second Quarter</i>	<i>Third Quarter</i>	<i>Fourth Quarter</i>	<i>Annual</i>
Number of Persons					
1982	455,300	461,300	463,750	463,700	461,000
1983	469,050	473,950	472,800	472,250	472,000
1984	471,800	473,650	470,750	471,800	472,000
1985	475,350	477,200	478,450	485,000	479,000
1986	485,300	488,850	493,950	499,900	492,000
1987	505,950	513,000	516,250	520,800	514,000
1988	515,400	519,400	518,950	518,200	518,000
1989	519,350	526,700	521,900	528,050	524,000
1990	531,950	539,750	544,650	551,650	542,000
1991	568,750	573,050	576,100	577,100	573,750
1992	579,250	582,950	585,400	588,700	584,050
1993	587,000	588,000	585,100	583,800	586,000
1994	581,500	581,850	580,100	577,100	580,150
1995	574,200	577,150	577,750	579,250	576,400
1996 1/	588,000	593,200	595,950	597,300	593,600
1997 1/	597,050	597,900	598,500	593,600	596,750
1998 1/	592,250	595,500	599,700	600,700	597,050
Percentage Change from the Same Period in Previous Year					
1982	1.4	2.3	2.7	2.5	2.2
1983	3.0	2.7	2.0	1.8	2.4
1984	0.6	-0.1	-0.4	-0.1	0.0
1985	0.8	0.7	1.6	2.8	1.5
1986	2.1	2.4	3.2	3.1	2.7
1987	4.3	4.9	4.5	4.2	4.5
1988	1.9	1.2	0.5	-0.5	0.8
1989	0.8	1.4	0.6	1.9	1.2
1990	2.4	2.5	4.4	4.5	3.4
1991	6.9	6.2	5.8	4.6	5.9
1992	1.8	1.7	1.6	2.0	1.8
1993	1.3	0.9	-0.1	-0.8	0.3
1994	-0.9	-1.0	-0.9	-1.1	-1.0
1995	-1.3	-0.8	-0.4	0.4	-0.6
1996 1/	2.4	2.8	3.2	3.1	3.0
1997 1/	1.5	0.8	0.4	-0.6	0.5
1998 1/	-0.8	-0.4	0.2	1.2	0.1

Quarterly averages are computed by the Hawaii State Department of Business, Economic Development & Tourism from the Hawaii State Department of Labor & Industrial Relations monthly rounded data.

1/ Monthly data rebenchmarked March, 1999.

Source: Hawaii State Department of Labor & Industrial Relations.



**Table A-2. CIVILIAN EMPLOYMENT**

<i>Year</i>	<i>First Quarter</i>	<i>Second Quarter</i>	<i>Third Quarter</i>	<i>Fourth Quarter</i>	<i>Annual</i>
Number of Persons					
1982	426,850	427,850	429,850	435,400	430,000
1983	438,550	440,000	444,100	445,350	442,000
1984	446,050	447,000	442,900	444,000	445,000
1985	449,250	450,400	449,800	458,600	452,000
1986	461,850	464,800	468,200	477,200	468,000
1987	484,250	492,150	494,700	504,900	494,000
1988	500,650	501,300	502,250	503,800	502,000
1989	505,200	512,250	511,800	514,750	511,000
1990	517,300	523,100	529,100	538,550	527,000
1991	553,950	557,100	559,400	560,600	557,750
1992	557,400	555,650	556,300	560,400	557,450
1993	560,600	563,050	560,600	559,350	560,900
1994	549,150	545,200	541,600	544,050	545,000
1995	541,650	542,700	541,900	546,750	542,650
1996 1/	551,800	554,150	556,400	560,600	555,750
1997 1/	559,750	558,250	558,250	558,000	558,600
1998 1/	555,900	556,650	560,400	566,000	559,750
Percentage Change from the Same Period in Previous Year					
1982	0.1	0.2	0.6	1.9	0.7
1983	2.7	2.8	3.3	2.3	2.8
1984	1.7	1.6	-0.3	-0.3	0.7
1985	0.7	0.8	1.6	3.3	1.6
1986	2.8	3.2	4.1	4.1	3.5
1987	4.9	5.9	5.7	5.8	5.6
1988	3.4	1.9	1.5	-0.2	1.6
1989	0.9	2.2	1.9	2.2	1.8
1990	2.4	2.1	3.4	4.6	3.1
1991	7.1	6.5	5.7	4.1	5.8
1992	0.6	-0.3	-0.6	0.0	-0.1
1993	0.6	1.3	0.8	-0.2	0.6
1994	-2.0	-3.2	-3.4	-2.7	-2.8
1995	-1.4	-0.5	0.1	0.5	-0.4
1996 1/	1.9	2.1	2.7	2.5	2.4
1997 1/	1.4	0.7	0.3	-0.5	0.5
1998 1/	-0.7	-0.3	0.4	1.4	0.2

Quarterly averages are computed by the Hawaii State Department of Business, Economic Development & Tourism from the Hawaii State Department of Labor & Industrial Relations monthly rounded data.

1/ Monthly data rebenchmarked March, 1999.

Source: Hawaii State Department of Labor & Industrial Relations.

**Table A-3. CIVILIAN UNEMPLOYMENT**

<i>Year</i>	<i>First Quarter</i>	<i>Second Quarter</i>	<i>Third Quarter</i>	<i>Fourth Quarter</i>	<i>Annual</i>
Number of Persons					
1982	28,400	33,450	33,850	28,250	31,000
1983	30,450	33,900	28,700	26,900	30,000
1984	25,750	26,600	27,850	27,800	27,000
1985	26,100	26,800	28,650	26,450	27,000
1986	23,500	24,050	25,750	22,700	24,000
1987	21,700	20,850	21,550	15,900	20,000
1988	14,750	18,150	16,700	14,450	16,000
1989	14,200	14,450	10,100	13,300	13,000
1990	14,650	16,650	15,550	13,100	15,000
1991	14,800	15,900	16,700	16,500	16,000
1992	21,850	27,300	29,100	28,300	26,650
1993	26,450	25,000	24,500	24,400	25,100
1994	32,350	36,650	38,550	33,100	35,150
1995	32,550	34,450	35,850	32,500	33,800
1996 1/	36,200	39,050	39,550	36,650	37,850
1997 1/	37,300	39,600	40,250	35,550	38,200
1998 1/	36,350	38,800	39,350	34,700	37,300
Percentage Change from the Same Period in Previous Year					
1982	24.8	40.5	41.0	11.0	29.2
1983	7.2	1.3	-15.2	-4.8	-3.2
1984	-15.4	-21.5	-3.0	3.3	-10.0
1985	1.4	0.8	2.9	-4.9	0.0
1986	-10.0	-10.3	-10.1	-14.2	-11.1
1987	-7.7	-13.3	-16.3	-30.0	-16.7
1988	-32.0	-12.9	-22.5	-9.1	-20.0
1989	-3.7	-20.4	-39.5	-8.0	-18.8
1990	3.2	15.2	54.0	-1.5	15.4
1991	1.0	-4.5	7.4	26.0	6.7
1992	47.6	71.7	74.3	71.5	66.6
1993	21.1	-8.4	-15.8	-13.8	-5.8
1994	22.3	46.6	57.3	35.7	40.0
1995	0.6	-6.0	-7.0	-1.8	-3.8
1996 1/	11.2	13.4	10.3	12.8	12.0
1997 1/	3.0	1.4	1.8	-3.0	0.9
1998 1/	-2.5	-2.0	-2.2	-2.4	-2.4

Quarterly averages are computed by the Hawaii State Department of Business, Economic Development & Tourism from the Hawaii State Department of Labor & Industrial Relations monthly rounded data.

1/ Monthly data rebenchmarked March, 1999.

Source: Hawaii State Department of Labor & Industrial Relations.

**Table A-4. CIVILIAN UNEMPLOYMENT RATE**

Year	First Quarter	Second Quarter	Third Quarter	Fourth Quarter	Annual
Percent of the Civilian Labor Force					
1982	6.2	7.3	7.3	6.1	6.7
1983	6.5	7.2	6.1	5.7	6.5
1984	5.5	5.6	5.9	5.9	5.6
1985	5.5	5.6	6.0	5.4	5.6
1986	4.8	4.9	5.2	4.5	4.8
1987	4.3	4.1	4.2	3.1	3.8
1988	2.9	3.5	3.2	2.8	3.1
1989	2.7	2.7	1.9	2.5	2.5
1990	2.8	3.1	2.9	2.4	2.8
1991	2.6	2.8	2.9	2.9	2.8
1992	3.8	4.7	5.0	4.8	4.6
1993	4.5	4.3	4.2	4.2	4.3
1994	5.6	6.3	6.6	5.7	6.1
1995	5.7	6.0	6.2	5.6	5.9
1996 1/	6.2	6.6	6.6	6.1	6.4
1997 1/	6.2	6.6	6.7	6.0	6.4
1998 1/	6.1	6.5	6.6	5.8	6.2

Quarterly averages are computed by the Hawaii State Department of Business, Economic Development & Tourism from the Hawaii State Department of Labor & Industrial Relations monthly rounded data.

1/ Monthly data rebenchmarked March, 1999.

Source: Hawaii State Department of Labor & Industrial Relations.



**Table A-5. NON-AGRICULTURAL WAGE AND SALARY JOBS**

<i>Year</i>	<i>First Quarter</i>	<i>Second Quarter</i>	<i>Third Quarter</i>	<i>Fourth Quarter</i>	<i>Annual</i>
<b>Number of Jobs</b>					
1982	400,800	401,300	397,350	398,100	399,400
1983	403,550	403,450	407,400	410,500	406,200
1984 1/	409,950	414,700	410,350	415,700	412,100
1985	419,950	423,700	426,950	432,350	425,750
1986	432,850	435,800	438,150	447,450	438,550
1987	451,900	459,000	458,450	470,550	459,950
1988	470,400	476,900	476,750	488,200	478,050
1989	495,450	503,100	504,000	519,350	505,450
1990	520,000	528,600	525,750	539,150	528,400
1991	537,950	537,300	536,100	545,200	539,150
1992	543,100	544,650	538,700	544,700	542,800
1993	540,100	543,450	532,300	539,800	538,900
1994	535,450	538,050	530,450	540,750	536,200
1995	536,000	536,200	526,000	533,150	532,850
1996	531,200	531,650	525,800	534,350	530,750
1997 2/	532,900	533,400	526,350	533,400	531,500
1998 2/	529,800	532,600	526,150	531,400	530,000
<b>Percentage Change from the Same Period in Previous Year</b>					
1982	-1.4	-1.4	-1.5	-1.1	-1.3
1983	0.7	0.5	2.5	3.1	1.7
1984 1/	1.6	2.8	0.7	1.3	1.5
1985	2.4	2.2	4.0	4.0	3.3
1986	3.1	2.9	2.6	3.5	3.0
1987	4.4	5.3	4.6	5.2	4.9
1988	4.1	3.9	4.0	3.8	3.9
1989	5.3	5.5	5.7	6.4	5.7
1990	5.0	5.1	4.3	3.8	4.5
1991	3.5	1.6	2.0	1.1	2.0
1992	1.0	1.4	0.5	-0.1	0.7
1993	-0.6	-0.2	-1.2	-0.9	-0.7
1994	-0.9	-1.0	-0.3	0.2	-0.5
1995	0.1	-0.3	-0.8	-1.4	-0.6
1996	-0.9	-0.8	0.0	0.2	-0.4
1997 2/	0.3	0.3	0.1	-0.2	0.1
1998 2/	-0.6	-0.1	0.0	-0.4	-0.3

Quarterly averages are computed by the Hawaii State Department of Business, Economic Development & Tourism from the Hawaii State Department of Labor & Industrial Relations monthly rounded data.

1/ Quarterly data contain monthly unrevised numbers.

2/ Monthly data rebenchmarked March, 1999.

Source: Hawaii State Department of Labor & Industrial Relations.

**Table A-6. CONSTRUCTION JOBS**

<i>Year</i>	<i>First Quarter</i>	<i>Second Quarter</i>	<i>Third Quarter</i>	<i>Fourth Quarter</i>	<i>Annual</i>
Number of Jobs					
1982	18,950	18,100	17,400	16,900	17,850
1983	18,100	17,800	17,900	17,500	17,800
1984	16,950	16,950	15,700	13,550	15,800
1985	16,000	16,950	17,900	17,850	17,150
1986	17,400	17,550	19,400	20,200	18,650
1987	20,600	21,200	21,500	21,500	21,200
1988	21,700	23,000	24,000	24,900	23,400
1989	26,500	28,600	30,150	31,500	29,200
1990	30,900	31,450	32,950	34,000	32,300
1991	33,450	33,800	33,950	33,000	33,550
1992	31,200	31,000	31,300	32,600	31,550
1993	32,650	32,650	32,500	31,500	32,350
1994	29,450	29,300	29,550	28,450	29,200
1995	26,500	26,150	26,650	25,800	26,300
1996	23,750	23,600	24,000	23,350	23,650
1997 1/	22,350	21,950	22,450	22,350	22,300
1998 1/	21,150	21,450	21,700	20,700	21,250
Percentage Change from the Same Period in Previous Year					
1982	-17.4	-18.8	-20.4	-17.6	-18.5
1983	-4.5	-1.7	2.9	3.6	-0.3
1984	-6.4	-4.8	-12.3	-22.6	-11.2
1985	-5.6	0.0	14.0	31.7	8.5
1986	8.8	3.5	8.4	13.2	8.7
1987	18.4	20.8	10.8	6.4	13.7
1988	5.3	8.5	11.6	15.8	10.4
1989	22.1	24.3	25.6	26.5	24.8
1990	16.6	10.0	9.3	7.9	10.6
1991	8.3	7.5	3.0	-2.9	3.9
1992	-6.7	-8.3	-7.8	-1.2	-6.0
1993	4.6	5.3	3.8	-3.4	2.5
1994	-9.8	-10.3	-9.1	-9.7	-9.7
1995	-10.0	-10.8	-9.8	-9.3	-9.9
1996	-10.4	-9.8	-9.9	-9.5	-10.1
1997 1/	-5.9	-7.0	-6.5	-4.3	-5.7
1998 1/	-5.4	-2.3	-3.3	-7.4	-4.7

Quarterly averages are computed by the Hawaii State Department of Business, Economic Development & Tourism from the Hawaii State Department of Labor & Industrial Relations monthly rounded data.

1/ Monthly data rebenchmarked March, 1999.

Source: Hawaii State Department of Labor & Industrial Relations.

**Table A-7. MANUFACTURING JOBS**

<i>Year</i>	<i>First Quarter</i>	<i>Second Quarter</i>	<i>Third Quarter</i>	<i>Fourth Quarter</i>	<i>Annual</i>
Number of Jobs					
1982	21,600	22,800	23,700	21,600	22,400
1983	22,000	22,250	23,500	21,650	22,350
1984	21,550	21,950	22,500	21,450	21,900
1985	21,400	21,950	22,400	21,950	21,900
1986	21,750	22,350	22,300	21,800	22,050
1987	21,850	21,900	22,050	21,800	21,900
1988	21,750	22,200	22,200	21,700	22,000
1989	21,600	21,400	21,550	21,350	21,500
1990	21,100	21,000	21,150	20,950	21,050
1991	20,550	20,350	20,600	20,300	20,450
1992	19,700	19,650	20,000	19,400	19,700
1993	19,300	19,250	19,350	18,750	19,150
1994	17,850	18,000	17,850	17,400	17,750
1995	16,800	16,850	17,200	17,050	17,000
1996	16,700	16,650	16,750	16,600	16,650
1997 1/	16,600	16,600	16,650	16,400	16,550
1998 1/	16,350	16,300	16,450	16,200	16,300
Percentage Change from the Same Period in Previous Year					
1982	-3.6	-4.2	-1.0	-0.7	-2.6
1983	1.9	-2.4	-0.8	0.2	-0.2
1984	-2.0	-1.3	-4.3	-0.9	-2.0
1985	-0.7	0.0	-0.4	2.3	0.0
1986	1.6	1.8	-0.4	-0.7	0.7
1987	0.5	-2.0	-1.1	0.0	-0.7
1988	-0.5	1.4	0.7	-0.5	0.5
1989	-0.7	-3.6	-2.9	-1.6	-2.3
1990	-2.3	-1.9	-1.9	-1.9	-2.1
1991	-2.6	-3.1	-2.6	-3.1	-2.9
1992	-4.1	-3.4	-2.9	-4.4	-3.7
1993	-2.0	-2.0	-3.3	-3.4	-2.8
1994	-7.5	-6.5	-7.8	-7.2	-7.3
1995	-5.9	-6.4	-3.6	-2.0	-4.2
1996	-0.6	-1.2	-2.6	-2.6	-2.1
1997 1/	-0.6	-0.3	-0.6	-1.2	-0.6
1998 1/	-1.5	-1.8	-1.2	-1.2	-1.5

Quarterly averages are computed by the Hawaii State Department of Business, Economic Development & Tourism from the Hawaii State Department of Labor & Industrial Relations monthly rounded data.

1/ Monthly data rebenchmarked March, 1999.

Source: Hawaii State Department of Labor & Industrial Relations.

**Table A-8. TRANSPORTATION JOBS**

<i>Year</i>	<i>First Quarter</i>	<i>Second Quarter</i>	<i>Third Quarter</i>	<i>Fourth Quarter</i>	<i>Annual</i>
<b>Number of Jobs</b>					
1982	21,250	21,400	21,050	20,950	21,150
1983	20,850	20,850	21,300	21,500	21,100
1984	21,450	21,950	22,300	22,650	22,100
1985	22,800	23,400	23,500	23,850	23,400
1986	24,050	24,400	24,550	25,150	24,550
1987	26,000	26,800	27,250	27,600	26,900
1988	27,450	27,800	27,750	28,100	27,750
1989	29,000	29,700	29,850	30,950	29,900
1990	30,850	31,400	31,950	33,200	31,850
1991	32,750	32,400	32,950	33,250	32,850
1992	32,850	33,050	33,100	32,650	32,900
1993	31,500	31,400	31,250	31,150	31,350
1994	31,850	32,250	31,650	31,750	31,900
1995	30,600	30,750	30,700	30,650	30,700
1996	30,800	30,700	31,050	31,350	31,000
1997 1/	31,350	31,250	31,000	31,100	31,150
1998 1/	30,950	30,900	31,050	30,550	30,850
<b>Percentage Change from the Same Period in Previous Year</b>					
1982	-0.2	-2.5	-5.4	-5.0	-3.4
1983	-1.9	-2.6	1.2	2.6	-0.2
1984	2.9	5.3	4.7	5.3	4.7
1985	6.3	6.6	5.4	5.3	5.9
1986	5.5	4.3	4.5	5.5	4.9
1987	8.1	9.8	11.0	9.7	9.6
1988	5.6	3.7	1.8	1.8	3.2
1989	5.6	6.8	7.6	10.1	7.7
1990	6.4	5.7	7.0	7.3	6.5
1991	6.2	3.2	3.1	0.2	3.1
1992	0.3	2.0	0.5	-1.8	0.2
1993	-4.1	-5.0	-5.6	-4.6	-4.7
1994	1.1	2.7	1.3	1.9	1.8
1995	-3.9	-4.7	-3.0	-3.5	-3.8
1996	0.7	-0.2	1.1	2.3	1.0
1997 1/	1.8	1.8	-0.2	-0.8	0.5
1998 1/	-1.3	-1.1	0.2	-1.8	-1.0

Quarterly averages are computed by the Hawaii State Department of Business, Economic Development & Tourism from the Hawaii State Department of Labor & Industrial Relations monthly rounded data.

1/ Monthly data rebenchmarked March, 1999.

Source: Hawaii State Department of Labor & Industrial Relations.

**Table A-9. COMMUNICATION JOBS**

<i>Year</i>	<i>First Quarter</i>	<i>Second Quarter</i>	<i>Third Quarter</i>	<i>Fourth Quarter</i>	<i>Annual</i>
Number of Jobs					
1982	7,500	7,400	7,500	7,500	7,500
1983	7,550	7,550	7,500	7,500	7,550
1984	7,500	7,550	7,450	7,450	7,500
1985	7,450	7,300	7,350	7,300	7,350
1986	7,050	7,150	7,100	7,150	7,100
1987	7,200	7,300	7,200	7,400	7,250
1988	7,650	7,500	7,500	7,550	7,550
1989	7,300	7,250	7,300	7,350	7,300
1990	7,300	7,400	7,400	7,450	7,400
1991	7,500	7,400	7,300	7,200	7,350
1992	7,000	7,000	6,850	6,850	6,900
1993	6,750	6,450	6,300	6,200	6,400
1994	6,350	6,200	6,200	6,350	6,250
1995	6,150	6,250	6,300	6,300	6,250
1996	6,300	6,350	6,450	6,550	6,400
1997 1/	6,500	6,550	6,600	6,700	6,600
1998 1/	6,850	6,600	6,650	6,650	6,700
Percentage Change from the Same Period in Previous Year					
1982	2.0	0.0	0.7	2.0	1.4
1983	0.7	2.0	0.0	0.0	0.7
1984	-0.7	0.0	-0.7	-0.7	-0.7
1985	-0.7	-3.3	-1.3	-2.0	-2.0
1986	-5.4	-2.1	-3.4	-2.1	-3.4
1987	2.1	2.1	1.4	3.5	2.1
1988	6.3	2.7	4.2	2.0	4.1
1989	-4.6	-3.3	-2.7	-2.6	-3.3
1990	0.0	2.1	1.4	1.4	1.4
1991	2.7	0.0	-1.4	-3.4	-0.7
1992	-6.7	-5.4	-6.2	-4.9	-6.1
1993	-3.6	-7.9	-8.0	-9.5	-7.2
1994	-5.9	-3.9	-1.6	2.4	-2.3
1995	-3.1	0.8	1.6	-0.8	0.0
1996	2.4	1.6	2.4	4.0	2.4
1997 1/	3.2	3.1	2.3	2.3	3.1
1998 1/	5.4	0.8	0.8	-0.7	1.5

Quarterly averages are computed by the Hawaii State Department of Business, Economic Development & Tourism from the Hawaii State Department of Labor & Industrial Relations monthly rounded data.

1/ Monthly data re-benchmarked March, 1999.

Source: Hawaii State Department of Labor & Industrial Relations.



**Table A-10. UTILITIES JOBS**

<i>Year</i>	<i>First Quarter</i>	<i>Second Quarter</i>	<i>Third Quarter</i>	<i>Fourth Quarter</i>	<i>Annual</i>
<b>Number of Jobs</b>					
1982	2,600	2,550	2,550	2,550	2,550
1983	2,450	2,400	2,450	2,450	2,450
1984	2,400	2,400	2,400	2,400	2,400
1985	2,450	2,450	2,500	2,500	2,450
1986	2,450	2,550	2,600	2,650	2,550
1987	2,600	2,650	2,650	2,650	2,650
1988	2,650	2,650	2,700	2,700	2,650
1989	2,700	2,800	2,850	2,850	2,800
1990	2,950	3,050	3,000	2,950	3,000
1991	3,050	3,100	3,150	3,200	3,100
1992	3,350	3,400	3,450	3,500	3,400
1993	3,500	3,550	3,600	3,550	3,550
1994	3,600	3,650	3,650	3,700	3,650
1995	3,700	3,750	3,750	3,800	3,750
1996	3,750	3,750	3,650	3,600	3,700
1997 1/	3,600	3,600	3,550	3,500	3,550
1998 1/	3,500	3,450	3,450	3,400	3,450
<b>Percentage Change from the Same Period in Previous Year</b>					
1982	0.0	-1.9	-1.9	-3.8	-1.9
1983	-5.8	-5.9	-3.9	-3.9	-3.9
1984	-2.0	0.0	-2.0	-2.0	-2.0
1985	2.1	2.1	4.2	4.2	2.1
1986	0.0	4.1	4.0	6.0	4.1
1987	6.1	3.9	1.9	0.0	3.9
1988	1.9	0.0	1.9	1.9	0.0
1989	1.9	5.7	5.6	5.6	5.7
1990	9.3	8.9	5.3	3.5	7.1
1991	3.4	1.6	5.0	8.5	3.3
1992	9.8	9.7	9.5	9.4	9.7
1993	4.5	4.4	4.3	1.4	4.4
1994	2.9	2.8	1.4	4.2	2.8
1995	2.8	2.7	2.7	2.7	2.7
1996	1.4	0.0	-2.7	-5.3	-1.3
1997 1/	-4.0	-4.0	-2.7	-2.8	-4.1
1998 1/	-2.8	-4.2	-2.8	-2.9	-2.8

Quarterly averages are computed by the Hawaii State Department of Business, Economic Development & Tourism from the Hawaii State Department of Labor & Industrial Relations monthly rounded data.

1/ Monthly data re-benchmarked March, 1999.

Source: Hawaii State Department of Labor & Industrial Relations.

**Table A-11. RETAIL TRADE JOBS**

<i>Year</i>	<i>First Quarter</i>	<i>Second Quarter</i>	<i>Third Quarter</i>	<i>Fourth Quarter</i>	<i>Annual</i>
<b>Number of Jobs</b>					
1982	86,500	86,350	86,250	86,200	86,300
1983	87,100	86,550	89,450	90,750	88,450
1984	89,750	91,400	92,800	93,600	91,900
1985	95,100	95,850	96,050	97,300	96,100
1986	96,600	96,450	99,350	101,250	98,400
1987	100,800	102,450	103,950	106,350	103,400
1988	104,700	106,850	107,000	108,450	106,750
1989	109,000	110,050	110,550	113,250	110,700
1990	111,950	113,000	113,700	115,250	113,450
1991	113,750	112,500	114,300	114,300	113,700
1992	113,600	113,150	113,700	112,450	113,250
1993	110,000	110,700	111,200	112,400	111,100
1994	110,350	110,050	111,750	114,850	111,750
1995	113,650	113,200	114,500	115,700	114,250
1996	114,350	112,750	113,400	114,800	113,850
1997 1/	113,900	113,200	112,750	113,650	113,350
1998 1/	111,450	110,400	110,150	111,050	110,750
<b>Percentage Change from the Same Period in Previous Year</b>					
1982	-0.3	0.3	-0.6	-1.4	-0.5
1983	0.7	0.2	3.7	5.3	2.5
1984	3.0	5.6	3.7	3.1	3.9
1985	6.0	4.9	3.5	4.0	4.6
1986	1.6	0.6	3.4	4.1	2.4
1987	4.3	6.2	4.6	5.0	5.1
1988	3.9	4.3	2.9	2.0	3.2
1989	4.1	3.0	3.3	4.4	3.7
1990	2.7	2.7	2.8	1.8	2.5
1991	1.6	-0.4	0.5	-0.8	0.2
1992	-0.1	0.6	-0.5	-1.6	-0.4
1993	-3.2	-2.2	-2.2	0.0	-1.9
1994	0.3	-0.6	0.5	2.2	0.6
1995	3.0	2.9	2.5	0.7	2.2
1996	0.6	-0.4	-1.0	-0.8	-0.4
1997 1/	-0.4	0.4	-0.6	-1.0	-0.4
1998 1/	-2.2	-2.5	-2.3	-2.3	-2.3

Quarterly averages are computed by the Hawaii State Department of Business, Economic Development & Tourism from the Hawaii State Department of Labor & Industrial Relations monthly rounded data.

1/ Monthly data re-benchmarked March, 1999.

Source: Hawaii State Department of Labor & Industrial Relations.

**Table A-12. WHOLESALE TRADE JOBS**

<i>Year</i>	<i>First Quarter</i>	<i>Second Quarter</i>	<i>Third Quarter</i>	<i>Fourth Quarter</i>	<i>Annual</i>
Number of Jobs					
1982	18,750	18,750	18,450	18,100	18,500
1983	18,250	18,200	18,450	18,700	18,400
1984	18,700	19,050	19,000	19,100	18,950
1985	19,250	19,550	19,750	19,700	19,550
1986	19,150	19,400	19,700	19,950	19,550
1987	19,950	20,350	20,450	20,700	20,400
1988	20,200	20,550	21,050	21,100	20,750
1989	21,450	21,850	21,950	22,150	21,850
1990	21,950	22,300	22,850	22,950	22,500
1991	22,700	22,600	22,700	22,900	22,750
1992	22,700	22,600	22,400	22,400	22,500
1993	21,950	22,100	21,900	21,800	21,950
1994	21,500	21,550	21,550	21,500	21,550
1995	21,600	21,500	21,500	21,600	21,550
1996	21,500	21,350	21,400	21,250	21,400
1997 1/	20,750	20,900	21,100	21,000	20,950
1998 1/	20,850	21,100	21,150	20,950	21,000
Percentage Change from the Same Period in Previous Year					
1982	0.8	0.8	-1.6	-3.7	-1.1
1983	-2.7	-2.9	0.0	3.3	-0.5
1984	2.5	4.7	3.0	2.1	3.0
1985	2.9	2.6	3.9	3.1	3.2
1986	-0.5	-0.8	-0.3	1.3	0.0
1987	4.2	4.9	3.8	3.8	4.3
1988	1.3	1.0	2.9	1.9	1.7
1989	6.2	6.3	4.3	5.0	5.3
1990	2.3	2.1	4.1	3.6	3.0
1991	3.4	1.3	-0.7	-0.2	1.1
1992	0.0	0.0	-1.3	-2.2	-1.1
1993	-3.3	-2.2	-2.2	-2.7	-2.4
1994	-2.1	-2.5	-1.6	-1.4	-1.8
1995	0.5	-0.2	-0.2	0.5	0.0
1996	-0.5	-0.7	-0.5	-1.6	-0.7
1997 1/	-3.5	-2.1	-1.4	-1.2	-2.1
1998 1/	0.5	1.0	0.2	-0.2	0.2

Quarterly averages are computed by the Hawaii State Department of Business, Economic Development & Tourism from the Hawaii State Department of Labor & Industrial Relations monthly rounded data.

1/ Monthly data re-benchmarked March, 1999.

Source: Hawaii State Department of Labor & Industrial Relations.

**Table A-13. FINANCE, INSURANCE AND REAL ESTATE JOBS**

<i>Year</i>	<i>First Quarter</i>	<i>Second Quarter</i>	<i>Third Quarter</i>	<i>Fourth Quarter</i>	<i>Annual</i>
<b>Number of Jobs</b>					
1982	31,950	31,650	31,300	31,200	31,500
1983	31,650	31,700	32,200	32,000	31,900
1984	31,950	31,950	31,850	31,700	31,850
1985	31,500	31,900	32,050	32,200	31,900
1986	32,600	32,750	33,450	33,850	33,150
1987	33,500	33,750	33,800	33,800	33,700
1988	34,000	34,300	34,650	34,850	34,450
1989	34,650	34,950	35,200	36,200	35,250
1990	35,900	36,800	37,250	37,300	36,800
1991	37,250	37,250	37,500	37,500	37,400
1992	37,150	37,750	38,250	38,550	37,950
1993	38,300	38,800	39,500	39,200	38,950
1994	38,700	38,550	38,500	37,900	38,400
1995	37,200	37,000	37,250	37,100	37,150
1996	36,950	36,850	37,050	36,750	36,900
1997 1/	36,300	36,150	36,150	36,000	36,150
1998 1/	35,250	35,500	35,750	35,450	35,500
<b>Percentage Change from the Same Period in Previous Year</b>					
1982	0.8	-0.2	-1.9	-1.0	-0.6
1983	-0.9	0.2	2.9	2.6	1.3
1984	0.9	0.8	-1.1	-0.9	-0.2
1985	-1.4	-0.2	0.6	1.6	0.2
1986	3.5	2.7	4.4	5.1	3.9
1987	2.8	3.1	1.0	-0.1	1.7
1988	1.5	1.6	2.5	3.1	2.2
1989	1.9	1.9	1.6	3.9	2.3
1990	3.6	5.3	5.8	3.0	4.4
1991	3.8	1.2	0.7	0.5	1.6
1992	-0.3	1.3	2.0	2.8	1.5
1993	3.1	2.8	3.3	1.7	2.6
1994	1.0	-0.6	-2.5	-3.3	-1.4
1995	-3.9	-4.0	-3.2	-2.1	-3.3
1996	-0.7	-0.4	-0.5	-0.9	-0.7
1997 1/	-1.8	-1.9	-2.4	-2.0	-2.0
1998 1/	-2.9	-1.8	-1.1	-1.5	-1.8

Quarterly averages are computed by the Hawaii State Department of Business, Economic Development & Tourism from the Hawaii State Department of Labor & Industrial Relations monthly rounded data.

1/ Monthly data re-benchmarked March, 1999.

Source: Hawaii State Department of Labor & Industrial Relations.

**Table A-14. SERVICES AND MISCELLANEOUS JOBS**

<i>Year</i>	<i>First Quarter</i>	<i>Second Quarter</i>	<i>Third Quarter</i>	<i>Fourth Quarter</i>	<i>Annual</i>
<b>Number of Jobs</b>					
1982	102,050	100,950	100,450	101,450	101,200
1983	103,950	103,800	105,650	106,350	104,950
1984	107,550	108,700	107,100	108,500	107,950
1985	110,650	110,500	113,750	115,650	112,650
1986	117,350	118,400	118,800	120,400	118,750
1987	123,600	125,150	126,750	130,550	126,500
1988	130,800	131,350	133,600	137,250	133,250
1989	141,450	143,450	146,650	150,050	145,400
1990	152,400	153,300	154,900	156,950	154,400
1991	157,400	157,100	160,150	161,750	159,100
1992	162,900	163,100	164,850	163,400	163,550
1993	163,100	163,150	161,900	162,100	162,550
1994	162,600	163,400	164,250	165,250	163,900
1995	165,050	164,600	164,100	164,350	164,500
1996	165,350	165,650	167,150	168,550	166,650
1997 1/	168,650	168,700	169,750	169,700	169,200
1998 1/	170,200	172,100	172,150	173,400	171,950
<b>Percentage Change from the Same Period in Previous Year</b>					
1982	-1.2	-1.8	-0.1	0.4	-0.7
1983	1.9	2.8	5.2	4.8	3.7
1984	3.5	4.7	1.4	2.0	2.9
1985	2.9	1.7	6.2	6.6	4.4
1986	6.1	7.1	4.4	4.1	5.4
1987	5.3	5.7	6.7	8.4	6.5
1988	5.8	5.0	5.4	5.1	5.3
1989	8.1	9.2	9.8	9.3	9.1
1990	7.7	6.9	5.6	4.6	6.2
1991	3.3	2.5	3.4	3.1	3.0
1992	3.5	3.8	2.9	1.0	2.8
1993	0.1	0.0	-1.8	-0.8	-0.6
1994	-0.3	0.2	1.5	1.9	0.8
1995	1.5	0.7	-0.1	-0.5	0.4
1996	0.2	0.6	1.9	2.6	1.3
1997 1/	2.0	1.8	1.6	0.7	1.5
1998 1/	0.9	2.0	1.4	2.2	1.6

Quarterly averages are computed by the Hawaii State Department of Business, Economic Development & Tourism from the Hawaii State Department of Labor & Industrial Relations monthly rounded data.

1/ Monthly data re-benchmarked March, 1999.

Source: Hawaii State Department of Labor & Industrial Relations.

**Table A-15. HOTEL JOBS**

<i>Year</i>	<i>First Quarter</i>	<i>Second Quarter</i>	<i>Third Quarter</i>	<i>Fourth Quarter</i>	<i>Annual</i>
<b>Number of Jobs</b>					
1982	26,700	26,650	26,300	26,400	26,500
1983	26,600	27,000	27,150	27,300	27,000
1984	28,250	28,450	27,900	28,500	28,250
1985	29,400	28,850	28,750	28,900	29,000
1986	29,100	29,150	29,550	29,150	29,250
1987	30,500	30,500	31,200	32,800	31,250
1988	33,650	33,550	34,350	35,750	34,350
1989	36,850	36,650	37,100	37,500	37,000
1990	37,550	38,450	38,800	40,200	38,750
1991	40,500	39,800	41,300	41,550	40,800
1992	41,500	41,350	40,800	40,250	40,950
1993	38,650	38,100	37,650	37,550	38,000
1994	37,700	37,850	38,100	38,350	38,000
1995	38,150	37,500	37,650	37,700	37,750
1996	38,200	37,950	38,550	38,650	38,350
1997 1/	39,100	38,000	38,100	38,150	38,350
1998 1/	38,400	37,850	37,450	37,350	37,750
<b>Percentage Change from the Same Period in Previous Year</b>					
1982	7.0	8.6	6.7	5.4	6.9
1983	-0.4	1.3	3.2	3.4	1.9
1984	6.2	5.4	2.8	4.4	4.6
1985	4.1	1.4	3.0	1.4	2.7
1986	-1.0	1.0	2.8	0.9	0.9
1987	4.8	4.6	5.6	12.5	6.8
1988	10.3	10.0	10.1	9.0	9.9
1989	9.5	9.2	8.0	4.9	7.7
1990	1.9	4.9	4.6	7.2	4.7
1991	7.9	3.5	6.4	3.4	5.3
1992	2.5	3.9	-1.2	-3.1	0.4
1993	-6.9	-7.9	-7.7	-6.7	-7.2
1994	-2.5	-0.7	1.2	2.1	0.0
1995	1.2	-0.9	-1.2	-1.7	-0.7
1996	0.1	1.2	2.4	2.5	1.6
1997 1/	2.4	0.1	-1.2	-1.3	0.0
1998 1/	-1.8	-0.4	-1.7	-2.1	-1.6

Quarterly averages are computed by the Hawaii State Department of Business, Economic Development & Tourism from the Hawaii State Department of Labor & Industrial Relations monthly rounded data.

1/ Monthly data re-benchmarked March, 1999.

Source: Hawaii State Department of Labor & Industrial Relations.

**Table A-16. FEDERAL GOVERNMENT JOBS**

<i>Year</i>	<i>First Quarter</i>	<i>Second Quarter</i>	<i>Third Quarter</i>	<i>Fourth Quarter</i>	<i>Annual</i>
<b>Number of Jobs</b>					
1982	30,850	31,550	31,650	32,050	31,500
1983	32,050	32,250	32,100	32,050	32,100
1984	31,750	31,950	32,200	32,550	32,100
1985	32,300	32,350	32,400	32,500	32,400
1986	32,100	32,000	32,000	32,250	32,100
1987	32,050	32,700	32,950	33,400	32,800
1988	33,750	33,700	33,750	34,100	33,800
1989	33,850	33,950	33,950	34,200	34,000
1990	33,850	34,950	34,050	33,700	34,150
1991	33,400	33,500	34,450	34,100	33,850
1992	33,650	33,500	33,050	32,850	33,250
1993	31,800	32,000	31,900	31,650	31,800
1994	31,350	31,550	31,250	30,950	31,250
1995	31,000	31,200	31,150	30,850	31,050
1996	31,300	30,800	31,550	30,850	31,100
1997 1/	30,550	30,750	30,750	30,650	30,650
1998 1/	30,350	30,400	30,400	30,450	30,400
<b>Percentage Change from the Same Period in Previous Year</b>					
1982	3.4	4.6	3.8	3.6	3.8
1983	3.9	2.2	1.4	0.0	1.9
1984	-0.9	-0.9	0.3	1.6	0.0
1985	1.7	1.3	0.6	-0.2	0.9
1986	-0.6	-1.1	-1.2	-0.8	-0.9
1987	-0.2	2.2	3.0	3.6	2.2
1988	5.3	3.1	2.4	2.1	3.0
1989	0.3	0.7	0.6	0.3	0.6
1990	0.0	2.9	0.3	-1.5	0.4
1991	-1.3	-4.1	1.2	1.2	-0.9
1992	0.7	0.0	-4.1	-3.7	-1.8
1993	-5.5	-4.5	-3.5	-3.7	-4.4
1994	-1.4	-1.4	-2.0	-2.2	-1.7
1995	-1.1	-1.1	-0.3	-0.3	-0.6
1996	1.0	-1.3	1.3	0.0	0.2
1997 1/	-2.4	-0.2	-2.5	-0.6	-1.4
1998 1/	-0.7	-1.1	-1.1	-0.7	-0.8

Quarterly averages are computed by the Hawaii State Department of Business, Economic Development & Tourism from the Hawaii State Department of Labor & Industrial Relations monthly rounded data.

1/ Monthly data re-benchmarked March, 1999.

Source: Hawaii State Department of Labor & Industrial Relations.

**Table A-17. STATE GOVERNMENT JOBS**

<i>Year</i>	<i>First Quarter</i>	<i>Second Quarter</i>	<i>Third Quarter</i>	<i>Fourth Quarter</i>	<i>Annual</i>
<b>Number of Jobs</b>					
1982	46,450	47,300	41,800	47,000	45,650
1983	47,150	47,550	41,450	47,350	45,900
1984	47,800	48,250	42,300	47,800	46,550
1985	48,500	48,850	43,350	48,900	47,400
1986	49,750	50,150	44,550	50,000	48,600
1987	50,950	51,700	45,450	51,400	49,900
1988	52,400	53,500	47,750	53,750	51,850
1989	54,300	55,300	49,000	55,650	53,550
1990	56,900	59,900	51,300	60,150	57,050
1991	61,800	62,850	53,450	63,000	60,250
1992	64,350	65,650	55,550	64,750	62,600
1993	66,050	68,050	56,800	66,100	64,250
1994	66,500	68,150	58,050	67,250	65,000
1995	67,550	68,650	55,800	63,750	63,950
1996	64,300	66,850	55,850	64,300	62,800
1997 1/	65,850	67,350	58,000	65,800	64,250
1998 1/	66,450	67,750	59,350	66,200	64,950
<b>Percentage Change from the Same Period in Previous Year</b>					
1982	-0.3	0.5	1.7	1.5	0.9
1983	1.5	0.5	-0.8	0.7	0.5
1984	1.4	1.5	2.1	1.0	1.4
1985	1.5	1.2	2.5	2.3	1.8
1986	2.6	2.7	2.8	2.2	2.5
1987	2.4	3.1	2.0	2.8	2.7
1988	2.8	3.5	5.1	4.6	3.9
1989	3.6	3.4	2.6	3.5	3.3
1990	4.8	8.3	4.7	8.1	6.5
1991	8.6	4.9	4.2	4.7	5.6
1992	4.1	4.5	3.9	2.8	3.9
1993	2.6	3.7	2.3	2.1	2.6
1994	0.7	0.1	2.2	1.7	1.2
1995	1.6	0.7	-3.9	-5.2	-1.6
1996	-4.8	-2.6	0.1	0.9	-1.8
1997 1/	2.4	0.7	3.8	2.3	2.3
1998 1/	0.9	0.6	2.3	0.6	1.1

Quarterly averages are computed by the Hawaii State Department of Business, Economic Development & Tourism from the Hawaii State Department of Labor & Industrial Relations monthly rounded data.

1/ Monthly data re-benchmarked March, 1999.

Source: Hawaii State Department of Labor & Industrial Relations.



**Table A-18. LOCAL GOVERNMENT JOBS**

<i>Year</i>	<i>First Quarter</i>	<i>Second Quarter</i>	<i>Third Quarter</i>	<i>Fourth Quarter</i>	<i>Annual</i>
Number of Jobs					
1982	12,250	12,550	15,200	12,650	13,150
1983	12,450	12,550	15,500	12,600	13,300
1984	12,550	12,650	14,700	12,850	13,200
1985	12,700	12,650	16,000	12,700	13,500
1986	12,550	12,650	14,400	12,900	13,150
1987	12,800	13,000	14,450	13,400	13,400
1988	13,400	13,550	14,750	13,700	13,850
1989	13,600	13,800	15,050	13,850	14,100
1990	13,900	14,050	15,250	14,350	14,400
1991	14,350	14,500	15,550	14,700	14,750
1992	14,700	14,850	16,150	15,350	15,250
1993	15,200	15,250	16,200	15,450	15,500
1994	15,350	15,400	16,300	15,400	15,600
1995	16,250	16,250	17,050	16,200	16,450
1996	16,300	16,350	17,450	16,450	16,600
1997 1/	16,400	16,450	17,750	16,500	16,750
1998 1/	16,450	16,600	17,950	16,500	16,850
Percentage Change from the Same Period in Previous Year					
1982	-4.7	0.0	-2.6	2.0	-1.5
1983	1.6	0.0	2.0	-0.4	1.1
1984	0.8	0.8	-5.2	2.0	-0.8
1985	1.2	0.0	8.8	-1.2	2.3
1986	-1.2	0.0	-10.0	1.6	-2.6
1987	2.0	2.8	0.3	3.9	1.9
1988	4.7	4.2	2.1	2.2	3.4
1989	1.5	1.8	2.0	1.1	1.8
1990	2.2	1.8	1.3	3.6	2.1
1991	3.2	3.2	2.0	2.4	2.4
1992	2.4	2.4	3.9	4.4	3.4
1993	3.4	2.7	0.3	0.7	1.6
1994	1.0	1.0	0.6	-0.3	0.6
1995	5.9	5.5	4.6	5.2	5.4
1996	0.3	0.6	2.3	1.5	0.9
1997 1/	0.6	0.6	1.7	0.3	0.9
1998 1/	0.3	0.9	1.1	0.0	0.6

Quarterly averages are computed by the Hawaii State Department of Business, Economic Development & Tourism from the Hawaii State Department of Labor & Industrial Relations monthly rounded data.

1/ Monthly data re-benchmarked March, 1999.

Source: Hawaii State Department of Labor & Industrial Relations.

**Table A-19. AGRICULTURE WAGE AND SALARY JOBS**

<i>Year</i>	<i>First Quarter</i>	<i>Second Quarter</i>	<i>Third Quarter</i>	<i>Fourth Quarter</i>	<i>Annual</i>
<b>Number of Jobs</b>					
1982	9,850	11,400	12,500	11,350	11,300
1983	9,900	11,300	12,300	11,200	11,200
1984	9,650	11,050	11,950	10,600	10,800
1985	9,800	10,500	11,250	10,150	10,400
1986	9,850	9,950	10,800	10,000	10,150
1987	10,000	10,500	11,300	10,350	10,550
1988	9,750	9,700	10,500	9,950	10,000
1989	9,250	9,700	10,150	9,450	9,650
1990	8,850	9,350	10,400	9,550	9,550
1991	8,800	9,350	10,150	9,900	9,550
1992	9,200	9,350	9,650	9,000	9,300
1993	8,750	8,350	8,800	8,350	8,550
1994	8,000	8,000	8,450	7,550	8,000
1995	7,100	6,950	7,350	7,750	7,300
1996	7,200	7,200	7,550	7,600	7,400
1997 1/	6,800	6,800	7,500	7,700	7,200
1998 1/	7,300	7,350	8,000	7,900	7,650
<b>Percentage Change from the Same Period in Previous Year</b>					
1982	-1.0	-5.0	-2.0	0.4	-2.2
1983	0.5	-0.9	-1.6	-1.3	-0.9
1984	-2.5	-2.2	-2.8	-5.4	-3.6
1985	1.6	-5.0	-5.9	-4.2	-3.7
1986	0.5	-5.2	-4.0	-1.5	-2.4
1987	1.5	5.5	4.6	3.5	3.9
1988	-2.5	-7.6	-7.1	-3.9	-5.2
1989	-5.1	0.0	-3.3	-5.0	-3.5
1990	-4.3	-3.6	2.5	1.1	-1.0
1991	-0.6	0.0	-2.4	3.7	0.0
1992	4.5	0.0	-4.9	-9.1	-2.6
1993	-4.9	-10.7	-8.8	-7.2	-8.1
1994	-8.6	-4.2	-4.0	-9.6	-6.4
1995	-11.3	-13.1	-13.0	2.6	-8.8
1996	1.4	3.6	2.7	-1.9	1.4
1997 1/	-5.6	-5.6	-0.7	1.3	-2.7
1998 1/	7.4	8.1	6.7	2.6	6.3

Quarterly averages are computed by the Hawaii State Department of Business, Economic Development & Tourism from the Hawaii State Department of Labor & Industrial Relations monthly rounded data.

1/ Monthly data re-benchmarked March, 1999.

Source: Hawaii State Department of Labor & Industrial Relations.

**Table A-20. INITIAL AGENT CLAIMS FOR UNEMPLOYMENT**

<i>Year</i>	<i>First Quarter</i>	<i>Second Quarter</i>	<i>Third Quarter</i>	<i>Fourth Quarter</i>	<i>Annual</i>
Number of Jobs					
1982	1,176	1,027	1,366	1,324	4,893
1983	1,413	1,136	1,058	1,094	4,701
1984	1,046	933	1,097	1,178	4,254
1985	1,018	857	1,050	1,115	4,040
1986	1,031	914	1,061	977	3,983
1987	897	700	933	817	3,347
1988	924	645	852	740	3,161
1989	692	659	718	814	2,883
1990	819	670	756	847	3,092
1991	839	723	1,047	994	3,603
1992	1,195	1,104	1,305	1,304	4,908
1993	1,205	1,135	1,199	1,225	4,764
1994	1,105	998	1,253	1,137	4,493
1995	1,054	1,013	1,082	1,095	4,244
1996	1,057	837	957	654	3,505
1997	589	524	587	475	2,175
1998	419	400	436	330	1,585
Percentage Change from the Same Period in Previous Year					
1982	-3.4	2.4	11.5	30.8	9.8
1983	20.2	10.6	-22.5	-17.4	-3.9
1984	-26.0	-17.9	3.7	7.7	-9.5
1985	-2.7	-8.1	-4.3	-5.3	-5.0
1986	1.3	6.7	1.0	-12.4	-1.4
1987	-13.0	-23.4	-12.1	-16.4	-16.0
1988	3.0	-7.9	-8.7	-9.4	-5.6
1989	-25.1	2.2	-15.7	10.0	-8.8
1990	18.4	1.7	5.3	4.1	7.2
1991	2.4	7.9	38.5	17.4	16.5
1992	42.4	52.7	24.6	31.2	36.2
1993	0.8	2.8	-8.1	-6.1	-2.9
1994	-8.3	-12.1	4.5	-7.2	-5.7
1995	-4.6	1.5	-13.6	-3.7	-5.5
1996	0.3	-17.4	-11.6	-40.3	-17.4
1997	-44.3	-37.4	-38.7	-27.4	-37.9
1998	-28.9	-23.7	-25.7	-30.5	-27.1

Source: Hawaii State Department of Labor and Industrial Relations, Unemployment Insurance Research Section.

**Table A-21. INITIAL LIABLE CLAIMS FOR UNEMPLOYMENT**

<i>Year</i>	<i>First Quarter</i>	<i>Second Quarter</i>	<i>Third Quarter</i>	<i>Fourth Quarter</i>	<i>Annual</i>
Number of Claims					
1982	1,375	1,258	1,657	1,504	5,794
1983	1,235	1,095	1,396	1,120	4,846
1984	1,111	1,003	1,338	1,122	4,574
1985	1,182	1,045	1,350	968	4,545
1986	863	1,046	1,271	1,027	4,207
1987	1,022	1,011	1,230	1,075	4,338
1988	1,177	1,083	1,249	1,057	4,566
1989	1,046	1,011	1,233	1,193	4,483
1990	1,324	1,298	1,677	1,590	5,889
1991	1,680	1,731	2,248	2,229	7,888
1992	2,447	2,518	3,113	2,812	10,890
1993	2,673	2,595	3,054	2,728	11,050
1994	2,748	2,492	3,378	3,039	11,657
1995	2,977	2,824	3,288	2,760	11,849
1996	2,454	2,486	2,787	2,335	10,062
1997	2,178	2,157	2,423	1,321	8,079
1998	1,200	1,063	1,470	1,085	4,818
Percentage Change from the Same Period in Previous Year					
1982	-12.0	-9.9	-6.3	5.8	-5.8
1983	-10.2	-13.0	-15.8	-25.5	-16.4
1984	-10.0	-8.4	-4.2	0.2	-5.6
1985	6.4	4.2	0.9	-13.7	-0.6
1986	-27.0	0.1	-5.9	6.1	-7.4
1987	18.4	-3.3	-3.2	4.7	3.1
1988	15.2	7.1	1.5	-1.7	5.3
1989	-11.1	-6.6	-1.3	12.9	-1.8
1990	26.6	28.4	36.0	33.3	31.4
1991	26.9	33.4	34.0	40.2	33.9
1992	45.7	45.5	38.5	26.2	38.1
1993	9.2	3.1	-1.9	-3.0	1.5
1994	2.8	-4.0	10.6	11.4	5.5
1995	8.3	13.3	-2.7	-9.2	1.6
1996	-17.6	-12.0	-15.2	-15.4	-15.1
1997	-11.2	-13.2	-13.1	-43.4	-19.7
1998	-44.9	-50.7	-39.3	-17.9	-40.4

Source: Hawaii State Department of Labor and Industrial Relations, Unemployment Insurance Research Section.

## B. INCOME AND PRICES

The U.S. Bureau of Economic Analysis (BEA) reported continued growth in Hawaii personal income for the third quarter of 1998 (the latest data available). However, the rate of growth was somewhat lower than in recent quarters and was led by growth in transfer payments.

From the third quarter of 1997 through the third quarter of 1998, personal income grew by 1.6 percent (Table B-1). This reflected continued moderation in annual growth rates since the third quarter of 1997 (Table B-2). Still, for the first three quarters of 1998, personal income was 2.0 percent higher than the same period in 1997.

Wages and salaries, the largest component of personal income, grew by a modest 0.7 percent from the third quarter of 1997 through the third quarter of 1998 (Table B-3). This reflected a dramatic slowing of growth in this component from the rates experienced over the last 6 quarters. Lower wage and salary growth may indicate renewed uncertainty in economic conditions stemming from the Asian economic crisis.

In contrast, proprietors' income grew a relatively strong 4.1 percent in the third quarter of 1998 from the year-earlier quarter (Table B-5). While slower than the rates of growth experienced in the first two quarters of 1998, proprietors' income growth remains robust and may reflect the continued growth in civilian employment relative to jobs (see the previous section).

Growth in the dividends, interest, and rent portion of personal income accelerated in the third quarter to 2.0 percent (Table B-6). This was the highest rate of growth in this

component since the fourth quarter of 1996. Readers are reminded that BEA revised this series in October 1998 to exclude capital gains, so that the growth reflects actual payments from firms to owners and creditors.

Transfer payments (payments for which no current services are performed, such as social security, government employees' retirement, and the value of food stamps), grew by 3.8 percent in the third quarter (Table B-7). This growth was slower than the rates experienced in the first half of the year. However, when weighted by the share in total personal income, transfer payments contributed most to personal income growth from the third quarter of 1997 to the third quarter of 1998.

Non-farm private earnings grew by 1.2 percent from the third quarter of 1997 through the third quarter of 1998 (Table B-1). On a weighted average basis, most of this growth came from services; finance, insurance, and real estate; and wholesale trade. Declines in private earnings came in construction, transportation and public utilities, and retail trade. Earnings in the public sector grew a scant 0.1 percent, with all of the growth coming from the federal civilian sector.

The U.S. Bureau of Labor Statistics reported that consumer prices in Honolulu fell from the second half of 1997 to the second half of 1998 by 0.5 percent (Table B-9). This was the second consecutive half-year of decline in the overall price index. For 1998 as a whole, consumer prices were lower by 0.2 percent. Some of the decline in consumer prices probably reflects the lower cost of imported goods from Asia.

**Table B-1. PERSONAL INCOME FOR HAWAII BY MAJOR SOURCES**

[In Millions of Dollars at Seasonally Adjusted Annual Rates]

Series	Third Quarter 1997	First 9 Months 1997	Second Quarter 1998 1/	Third Quarter 1998	First 9 Months 1998 1/	Percent Change		
						To Third Quarter 1998 from		First 9 Months
						Third Quarter 1997	Second Quarter 1998 1/	1998 from 1997 1/
PERSONAL INCOME	30,704	30,419	30,985	31,205	31,030	1.6	0.7	2.0
Earnings by place of work	21,876	21,627	21,925	22,086	21,979	1.0	0.7	1.6
Wage and salary	17,544	17,341	17,525	17,673	17,579	0.7	0.8	1.4
Other labor income	1,725	1,719	1,694	1,698	1,697	-1.6	0.2	-1.2
Proprietors' income	2,608	2,567	2,707	2,714	2,703	4.1	0.3	5.3
Farm proprietors' income	4	4	3	3	3	-25.0	0.0	-25.0
Nonfarm proprietors' income	2,604	2,563	2,704	2,712	2,700	4.1	0.3	5.3
Dividends, interest, and rent	5,080	5,077	5,137	5,180	5,137	2.0	0.8	1.2
Transfer payments	5,174	5,126	5,347	5,373	5,342	3.8	0.5	4.2
Less: Pers. cont. for social insur.	1,426	1,412	1,424	1,434	1,428	0.6	0.7	1.1
Earnings by industry	21,876	21,627	21,925	22,086	21,979	1.0	0.7	1.6
Farm earnings	156	158	166	172	166	10.3	3.6	5.3
Nonfarm earnings	21,720	21,470	21,760	21,914	21,814	0.9	0.7	1.6
Private earnings	16,060	15,975	16,168	16,249	16,180	1.2	0.5	1.3
Ag. serv., forestry, fishing & oth	141	140	149	150	148	6.4	0.7	5.7
Mining	16	16	17	17	17	6.3	0.0	2.0
Construction	1,354	1,386	1,354	1,319	1,348	-2.6	-2.6	-2.7
Manufacturing	812	795	817	804	811	-1.0	-1.6	1.9
Transport. and public utilities	1,839	1,818	1,791	1,809	1,804	-1.6	1.0	-0.8
Wholesale trade	798	794	814	821	814	2.9	0.9	2.5
Retail trade	2,662	2,653	2,625	2,635	2,639	-1.0	0.4	-0.5
Finance, insur., and real estate	1,768	1,762	1,789	1,805	1,776	2.1	0.9	0.8
Services	6,672	6,612	6,813	6,889	6,823	3.3	1.1	3.2
Gov't and gov't enterprises	5,660	5,495	5,592	5,665	5,634	0.1	1.3	2.5
Federal, civilian	1,324	1,300	1,366	1,375	1,365	3.9	0.7	5.1
Military	1,564	1,566	1,546	1,534	1,555	-1.9	-0.8	-0.7
State and local	2,772	2,629	2,679	2,756	2,713	-0.6	2.9	3.2

1/ Data for the first and second quarters of 1998 have been revised.

Source: U.S. Bureau of Economic Analysis, Regional Accounts Data: January 26, 1999 <<http://www.bea.doc.gov/bea/sq.exe>> and <<http://www.bea.doc.gov/bea/dr/spitbl-f.html>>, and tabulations by the Hawaii State Department of Business, Economic Development & Tourism.

**Table B-2. PERSONAL INCOME**

<i>Year</i>	<i>First Quarter</i>	<i>Second Quarter</i>	<i>Third Quarter</i>	<i>Fourth Quarter</i>	<i>Annual</i>
In Millions of Dollars at Seasonally Adjusted Annual Rates					
1982	11,697	12,004	12,204	12,280	12,046
1983	12,875	13,088	13,215	13,595	13,193
1984	13,706	14,079	14,303	14,405	14,123
1985	14,771	14,933	15,146	15,429	15,070
1986	15,752	15,942	16,264	16,515	16,118
1987	16,785	17,132	17,502	18,047	17,367
1988	18,550	19,055	19,349	19,993	19,237
1989	20,463	20,978	21,425	22,053	21,230
1990	22,913	23,669	24,338	24,906	23,957
1991	24,811	24,932	25,153	25,496	25,098
1992	26,292	26,678	25,074	27,445	26,372
1993	27,422	27,645	27,467	27,511	27,511
1994	27,829	28,096	28,497	28,904	28,332
1995	29,134	29,360	29,342	29,495	29,333
1996	29,570	29,642	29,756	29,824	29,698
1997	30,162	30,390	30,704	30,659	30,479
1998 1/	30,900	30,985	31,205	(NA)	(NA)
Percentage Change from the Same Period in Previous Year					
1982	5.6	7.0	5.8	5.2	5.9
1983	10.1	9.0	8.3	10.7	9.5
1984	6.5	7.6	8.2	6.0	7.0
1985	7.8	6.1	5.9	7.1	6.7
1986	6.6	6.8	7.4	7.0	7.0
1987	6.6	7.5	7.6	9.3	7.7
1988	10.5	11.2	10.6	10.8	10.8
1989	10.3	10.1	10.7	10.3	10.4
1990	12.0	12.8	13.6	12.9	12.8
1991	8.3	5.3	3.3	2.4	4.8
1992	6.0	7.0	-0.3	7.6	5.1
1993	4.3	3.6	9.5	0.2	4.3
1994	1.5	1.6	3.7	5.1	3.0
1995	4.7	4.5	3.0	2.0	3.5
1996	1.5	1.0	1.4	1.1	1.2
1997	2.0	2.5	3.2	2.8	2.6
1998 1/	2.4	2.0	1.6	(NA)	(NA)

NA Not available.

1/ Data for the first and second quarters of 1998 have been revised.

Source: U.S. Department of Commerce, Bureau of Economic Analysis, Regional Accounts Data: January 26, 1999, <<http://www.bea.doc.gov/bea/sq.exe>> and <<http://www.bea.doc.gov/bea/dr/spitbl-f.html>>, and tabulations by the Hawaii State Department of Business, Economic Development & Tourism.

**Table B-3. TOTAL WAGES AND SALARIES**

<i>Year</i>	<i>First Quarter</i>	<i>Second Quarter</i>	<i>Third Quarter</i>	<i>Fourth Quarter</i>	<i>Annual</i>
In Millions of Dollars at Seasonally Adjusted Annual Rates					
1982	7,391	7,521	7,685	7,828	7,606
1983	7,993	8,064	8,062	8,321	8,110
1984	8,412	8,645	8,692	8,762	8,628
1985	8,987	9,122	9,275	9,455	9,210
1986	9,557	9,668	9,882	10,158	9,816
1987	10,382	10,632	10,882	11,166	10,766
1988	11,420	11,712	11,922	12,273	11,832
1989	12,548	12,903	13,245	13,612	13,077
1990	13,935	14,349	14,703	15,084	14,518
1991	15,141	15,253	15,481	15,693	15,392
1992	16,167	16,341	16,404	16,727	16,410
1993	16,609	16,847	16,608	16,523	16,647
1994	16,701	16,691	16,778	16,870	16,760
1995	16,717	16,812	16,724	16,745	16,750
1996	16,741	16,814	16,917	16,974	16,862
1997	17,167	17,313	17,544	17,438	17,366
1998 1/	17,539	17,525	17,673	(NA)	(NA)
Percentage Change from the Same Period in Previous Year					
1982	5.1	5.2	6.6	6.6	5.9
1983	8.1	7.2	4.9	6.3	6.6
1984	5.2	7.2	7.8	5.3	6.4
1985	6.8	5.5	6.7	7.9	6.7
1986	6.3	6.0	6.5	7.4	6.6
1987	8.6	10.0	10.1	9.9	9.7
1988	10.0	10.2	9.6	9.9	9.9
1989	9.9	10.2	11.1	10.9	10.5
1990	11.1	11.2	11.0	10.8	11.0
1991	8.7	6.3	5.3	4.0	6.1
1992	6.8	7.1	6.0	6.6	6.6
1993	2.7	3.1	1.2	-1.2	1.5
1994	0.6	-0.9	1.0	2.1	0.7
1995	0.1	0.7	-0.3	-0.7	-0.1
1996	0.1	0.0	1.2	1.4	0.7
1997	2.5	3.0	3.7	2.7	3.0
1998 1/	2.2	1.2	0.7	(NA)	(NA)

NA Not available.

1/ Data for the first and second quarters of 1998 have been revised.

Source: U.S. Department of Commerce, Bureau of Economic Analysis, Regional Accounts Data: January 26, 1999, <<http://www.bea.doc.gov/bea/sq.exe>> and <<http://www.bea.doc.gov/bea/dr/spitbl-f.html>>, and tabulations by the Hawaii State Department of Business, Economic Development & Tourism.



**Table B-4. OTHER LABOR INCOME**

<i>Year</i>	<i>First Quarter</i>	<i>Second Quarter</i>	<i>Third Quarter</i>	<i>Fourth Quarter</i>	<i>Annual</i>
In Millions of Dollars at Seasonally Adjusted Annual Rates					
1982	610	633	659	683	646
1983	695	711	720	746	718
1984	763	796	803	814	794
1985	826	827	841	859	838
1986	885	923	960	991	940
1987	998	1,013	1,013	1,040	1,016
1988	1,058	1,078	1,096	1,132	1,091
1989	1,164	1,220	1,274	1,323	1,245
1990	1,367	1,420	1,476	1,541	1,451
1991	1,566	1,612	1,660	1,690	1,632
1992	1,742	1,758	1,779	1,789	1,767
1993	1,889	1,892	1,889	1,870	1,885
1994	1,957	1,934	1,952	1,951	1,949
1995	1,922	1,899	1,852	1,816	1,873
1996	1,765	1,742	1,727	1,714	1,803
1997	1,714	1,717	1,725	1,698	1,767
1998 1/	1,700	1,694	1,698	(NA)	(NA)
Percentage Change from the Same Period in Previous Year					
1982	8.3	9.9	13.4	14.8	11.7
1983	13.9	12.3	9.3	9.2	11.1
1984	9.8	12.0	11.5	9.1	10.6
1985	8.3	3.9	4.7	5.5	5.6
1986	7.1	11.6	14.1	15.4	12.1
1987	12.8	9.8	5.5	4.9	8.1
1988	6.0	6.4	8.2	8.8	7.4
1989	10.0	13.2	16.2	16.9	14.1
1990	17.4	16.4	15.9	16.5	16.5
1991	14.6	13.5	12.5	9.7	12.5
1992	11.2	9.1	7.2	5.9	8.3
1993	8.4	7.6	6.2	4.5	6.7
1994	3.6	2.2	3.3	4.3	3.4
1995	-1.8	-1.8	-5.1	-6.9	-3.9
1996	-8.2	-8.3	-6.7	-5.6	-3.7
1997	-2.9	-1.4	-0.1	-0.9	-2.0
1998 1/	-0.8	-1.3	-1.6	(NA)	(NA)

NA Not available.

1/ Data for the first and second quarters of 1998 have been revised.

Source: U.S. Department of Commerce, Bureau of Economic Analysis, Regional Accounts Data: January 26, 1999, <<http://www.bea.doc.gov/bea/sq.exe>> and <<http://www.bea.doc.gov/bea/dr/spitbl-f.html>>, and tabulations by the Hawaii State Department of Business, Economic Development & Tourism.

**Table B-5. PROPRIETORS' INCOME**

<i>Year</i>	<i>First Quarter</i>	<i>Second Quarter</i>	<i>Third Quarter</i>	<i>Fourth Quarter</i>	<i>Annual</i>
In Millions of Dollars at Seasonally Adjusted Annual Rates					
1982	729	850	845	863	822
1983	1,027	1,027	1,029	1,021	1,026
1984	992	1,039	1,087	1,021	1,035
1985	1,129	1,126	1,127	1,150	1,133
1986	1,186	1,193	1,265	1,265	1,227
1987	1,257	1,294	1,357	1,412	1,330
1988	1,596	1,763	1,719	1,806	1,721
1989	1,792	1,776	1,792	1,870	1,808
1990	2,041	2,094	2,157	2,169	2,115
1991	2,056	2,083	2,063	2,036	2,060
1992	2,063	2,036	2,173	2,200	2,118
1993	2,281	2,279	2,317	2,372	2,312
1994	2,304	2,346	2,382	2,421	2,363
1995	2,441	2,472	2,535	2,559	2,502
1996	2,529	2,532	2,528	2,523	2,528
1997	2,527	2,567	2,608	2,647	2,587
1998 1/	2,687	2,707	2,714	(NA)	(NA)
Percentage Change from the Same Period in Previous Year					
1982	-9.4	14.7	9.5	15.8	7.3
1983	40.9	20.8	21.8	18.3	24.9
1984	-3.4	1.2	5.6	0.0	0.9
1985	13.8	8.4	3.7	12.6	9.5
1986	5.0	6.0	12.2	10.0	8.3
1987	6.0	8.5	7.3	11.6	8.4
1988	27.0	36.2	26.7	27.9	29.4
1989	12.3	0.7	4.2	3.5	5.0
1990	13.9	17.9	20.4	16.0	17.0
1991	0.7	-0.5	-4.4	-6.1	-2.6
1992	0.3	-2.3	5.3	8.1	2.8
1993	10.6	11.9	6.6	7.8	9.2
1994	1.0	2.9	2.8	2.1	2.2
1995	5.9	5.4	6.4	5.7	5.9
1996	3.6	2.4	-0.3	-1.4	1.0
1997	-0.1	1.4	3.2	4.9	2.3
1998 1/	6.3	5.5	4.1	(NA)	(NA)

NA Not available.

1/ Data for the first and second quarters of 1998 have been revised.

Source: U.S. Department of Commerce, Bureau of Economic Analysis, Regional Accounts Data: January 26, 1999, <<http://www.bea.doc.gov/bea/sq.exe>> and <<http://www.bea.doc.gov/bea/dr/spitbl-f.html>>, and tabulations by the Hawaii State Department of Business, Economic Development & Tourism.

**Table B-6. DIVIDENDS, INTEREST, AND RENT**

<i>Year</i>	<i>First Quarter</i>	<i>Second Quarter</i>	<i>Third Quarter</i>	<i>Fourth Quarter</i>	<i>Annual</i>
In Millions of Dollars at Seasonally Adjusted Annual Rates					
1982	1,915	1,930	1,896	1,726	1,867
1983	1,963	2,043	2,143	2,232	2,095
1984	2,273	2,340	2,452	2,509	2,394
1985	2,511	2,523	2,536	2,587	2,539
1986	2,696	2,701	2,690	2,651	2,685
1987	2,689	2,724	2,788	2,962	2,791
1988	2,988	3,005	3,098	3,255	3,087
1989	3,409	3,527	3,505	3,550	3,498
1990	3,692	3,823	3,978	4,033	3,882
1991	3,996	3,989	4,001	4,061	4,012
1992	4,055	4,126	2,543	4,076	3,700
1993	4,114	4,031	3,981	3,986	4,028
1994	4,097	4,267	4,451	4,638	4,363
1995	4,757	4,786	4,780	4,899	4,806
1996	4,982	4,995	5,027	5,035	5,010
1997	5,075	5,077	5,080	5,082	5,079
1998 1/	5,095	5,137	5,180	(NA)	(NA)
Percentage Change from the Same Period in Previous Year					
1982	10.5	7.6	-1.0	-10.8	1.2
1983	2.5	5.9	13.0	29.3	12.2
1984	15.8	14.5	14.4	12.4	14.2
1985	10.5	7.8	3.4	3.1	6.1
1986	7.4	7.1	6.1	2.5	5.7
1987	-0.3	0.9	3.6	11.7	4.0
1988	11.1	10.3	11.1	9.9	10.6
1989	14.1	17.4	13.1	9.1	13.3
1990	8.3	8.4	13.5	13.6	11.0
1991	8.2	4.3	0.6	0.7	3.4
1992	1.5	3.4	-36.4	0.4	-7.8
1993	1.5	-2.3	56.5	-2.2	8.9
1994	-0.4	5.9	11.8	16.4	8.3
1995	16.1	12.2	7.4	5.6	10.1
1996	4.7	4.4	5.2	2.8	4.3
1997	1.9	1.6	1.1	0.9	1.4
1998 1/	0.4	1.2	2.0	(NA)	(NA)

NA Not available.

1/ Data for the first and second quarters of 1998 have been revised.

Source: U.S. Department of Commerce, Bureau of Economic Analysis, Regional Accounts Data: January 26, 1999, <<http://www.bea.doc.gov/bea/sq.exe>> and <<http://www.bea.doc.gov/bea/dr/spitbl-f.html>>, and tabulations by the Hawaii State Department of Business, Economic Development & Tourism.

**Table B-7. TRANSFER PAYMENTS**

<i>Year</i>	<i>First Quarter</i>	<i>Second Quarter</i>	<i>Third Quarter</i>	<i>Fourth Quarter</i>	<i>Annual</i>
In Millions of Dollars at Seasonally Adjusted Annual Rates					
1982	1,598	1,628	1,691	1,761	1,670
1983	1,800	1,845	1,858	1,886	1,847
1984	1,901	1,911	1,920	1,948	1,920
1985	2,016	2,033	2,066	2,083	2,050
1986	2,155	2,188	2,208	2,205	2,189
1987	2,238	2,261	2,269	2,289	2,264
1988	2,373	2,402	2,433	2,471	2,420
1989	2,543	2,572	2,652	2,766	2,633
1990	2,985	3,108	3,180	3,263	3,134
1991	3,270	3,213	3,180	3,260	3,231
1992	3,448	3,555	3,695	3,869	3,642
1993	3,870	3,930	3,985	4,052	3,959
1994	4,133	4,204	4,285	4,381	4,251
1995	4,668	4,770	4,821	4,848	4,777
1996	4,918	4,932	4,936	4,961	4,937
1997	5,078	5,125	5,174	5,208	5,146
1998 1/	5,306	5,347	5,373	(NA)	(NA)
Percentage Change from the Same Period in Previous Year					
1982	10.7	10.4	7.7	11.1	9.9
1983	12.6	13.3	9.9	7.1	10.6
1984	5.6	3.6	3.3	3.3	3.9
1985	6.0	6.4	7.6	6.9	6.7
1986	6.9	7.6	6.9	5.9	6.8
1987	3.9	3.3	2.8	3.8	3.4
1988	6.0	6.2	7.2	8.0	6.9
1989	7.2	7.1	9.0	11.9	8.8
1990	17.4	20.8	19.9	18.0	19.0
1991	9.5	3.4	0.0	-0.1	3.1
1992	5.4	10.6	16.2	18.7	12.7
1993	12.2	10.5	7.8	4.7	8.7
1994	6.8	7.0	7.5	8.1	7.4
1995	12.9	13.5	12.5	10.7	12.4
1996	5.4	3.4	2.4	2.3	3.3
1997	3.3	3.9	4.8	5.0	4.2
1998 1/	4.5	4.3	3.8	(NA)	(NA)

NA Not available.

1/ Data for the first and second quarters of 1998 have been revised.

Source: U.S. Department of Commerce, Bureau of Economic Analysis, Regional Accounts Data: January 26, 1999, <<http://www.bea.doc.gov/bea/sq.exe>> and <<http://www.bea.doc.gov/bea/dr/spitbl-f.html>>, and tabulations by the Hawaii State Department of Business, Economic Development & Tourism.

**Table B-8. PERSONAL CONTRIBUTIONS TO SOCIAL INSURANCE**

<i>Year</i>	<i>First Quarter</i>	<i>Second Quarter</i>	<i>Third Quarter</i>	<i>Fourth Quarter</i>	<i>Annual</i>
In Millions of Dollars at Seasonally Adjusted Annual Rates					
1982	546	559	573	582	565
1983	603	602	597	612	604
1984	636	653	651	647	647
1985	696	698	700	705	700
1986	727	731	741	756	739
1987	778	792	808	822	800
1988	886	905	919	944	914
1989	993	1,020	1,044	1,068	1,031
1990	1,106	1,126	1,157	1,183	1,143
1991	1,218	1,218	1,232	1,244	1,228
1992	1,293	1,301	1,302	1,292	1,297
1993	1,339	1,334	1,313	1,292	1,320
1994	1,363	1,345	1,351	1,357	1,354
1995	1,371	1,378	1,370	1,371	1,373
1996	1,367	1,372	1,379	1,382	1,375
1997	1,401	1,410	1,426	1,414	1,413
1998 1/	1,427	1,424	1,434	(NA)	(NA)
Percentage Change from the Same Period in Previous Year					
1982	7.9	9.6	11.3	10.6	9.9
1983	10.4	7.7	4.2	5.2	6.8
1984	5.5	8.5	9.0	5.7	7.2
1985	9.4	6.9	7.5	9.0	8.2
1986	4.5	4.7	5.9	7.2	5.6
1987	7.0	8.3	9.0	8.7	8.3
1988	13.9	14.3	13.7	14.8	14.2
1989	12.1	12.7	13.6	13.1	12.9
1990	11.4	10.4	10.8	10.8	10.8
1991	10.1	8.2	6.5	5.2	7.4
1992	6.2	6.8	5.7	3.9	5.6
1993	3.6	2.5	0.8	0.0	1.7
1994	1.8	0.8	2.9	5.0	2.6
1995	0.6	2.5	1.4	1.0	1.4
1996	-0.3	-0.4	0.7	0.8	0.2
1997	2.5	2.8	3.4	2.3	2.7
1998 1/	1.9	1.0	0.6	(NA)	(NA)

NA Not available.

1/ Data for the first and second quarters of 1998 have been revised.

Source: U.S. Department of Commerce, Bureau of Economic Analysis, Regional Accounts Data: January 26, 1999, <<http://www.bea.doc.gov/bea/sq.exe>> and <<http://www.bea.doc.gov/bea/dr/spitbl-f.html>>, and tabulations by the Hawaii State Department of Business, Economic Development & Tourism.

**Table B-9. HONOLULU and U.S. CONSUMER PRICE INDEX,  
ALL URBAN CONSUMERS (CPI-U)  
[1982-84=100]**

Period	U.S.	Honolulu								
		All Items	Food & Beverages	Housing	Apparel & Upkeep	Transportation	Medical Care	Recreation 1/	Educ. & Comm. 1/	Other Goods & Services
1982	96.5	97.2	96.9	98.0	98.4	99.0	91.6	(NA)	(NA)	92.0
1983	99.6	99.3	99.5	98.9	101.4	98.2	101.1	(NA)	(NA)	101.4
1984	103.9	103.5	103.6	103.1	100.2	102.9	107.3	(NA)	(NA)	106.6
1985	107.6	106.8	107.8	106.0	99.6	104.9	113.2	(NA)	(NA)	112.5
1986	109.6	109.4	110.0	108.4	99.8	105.2	122.3	(NA)	(NA)	119.6
1987	113.6	114.9	114.1	115.0	102.5	109.7	127.9	(NA)	(NA)	129.7
1988	118.3	121.7	120.3	123.0	106.8	116.1	132.5	(NA)	(NA)	137.1
1989	124.0	128.7	128.1	131.1	104.3	123.9	139.3	(NA)	(NA)	146.1
1990	130.7	138.1	137.8	141.5	107.0	131.1	154.2	(NA)	(NA)	160.4
1991	136.2	148.0	145.9	152.8	110.5	139.3	171.3	(NA)	(NA)	175.7
1992	140.3	155.1	148.5	161.7	114.2	147.4	182.6	(NA)	(NA)	189.0
1993	144.5	160.1	152.9	166.5	116.5	150.5	197.4	(NA)	(NA)	200.1
1994	148.2	164.5	153.4	171.6	118.7	156.4	206.0	(NA)	(NA)	209.6
1995	152.4	168.1	156.8	174.7	117.5	162.4	209.8	(NA)	(NA)	216.8
1996	156.9	170.7	156.6	176.8	118.5	167.0	215.0	(NA)	(NA)	226.5
1997	160.5	171.9	159.2	177.1	117.3	166.2	217.3	(NA)	(NA)	239.0
1998	163.0	171.5	159.1	176.0	112.2	162.5	226.1	100.8	99.1	256.1
1995H1	151.5	166.9	156.5	173.4	118.1	160.0	207.8	(NA)	(NA)	214.4
H2	153.2	169.4	157.1	176.0	116.9	164.9	211.8	(NA)	(NA)	219.2
1996H1	155.8	170.5	156.9	176.8	120.0	166.3	214.9	(NA)	(NA)	220.6
H2	157.9	171.0	156.3	176.8	116.9	167.7	215.0	(NA)	(NA)	232.4
1997H1	159.9	172.1	159.4	177.3	119.8	167.8	215.6	(NA)	(NA)	232.5
H2	161.2	171.8	159.0	177.0	114.8	164.6	219.1	(NA)	(NA)	245.5
1998H1	162.3	172.0	160.0	176.3	116.4	163.2	222.5	101.4	98.9	254.3
H2	163.7	171.0	158.2	175.7	108.0	161.8	229.8	100.3	99.3	258.0
Percentage Change from the Same Period in Previous Year										
1982	6.2	6.0	4.6	6.2	4.1	3.4	12.0	(NA)	(NA)	12.9
1983	3.2	2.2	2.7	0.9	3.0	-0.8	10.4	(NA)	(NA)	10.2
1984	4.3	4.2	4.1	4.2	-1.2	4.8	6.1	(NA)	(NA)	5.1
1985	3.6	3.2	4.1	2.8	-0.6	1.9	5.5	(NA)	(NA)	5.5
1986	1.9	2.4	2.0	2.3	0.2	0.3	8.0	(NA)	(NA)	6.3
1987	3.6	5.0	3.7	6.1	2.7	4.3	4.6	(NA)	(NA)	8.4
1988	4.1	5.9	5.4	7.0	4.2	5.8	3.6	(NA)	(NA)	5.7
1989	4.8	5.8	6.5	6.6	-2.3	6.7	5.1	(NA)	(NA)	6.6
1990	5.4	7.3	7.6	7.9	2.6	5.8	10.7	(NA)	(NA)	9.8
1991	4.2	7.2	5.9	8.0	3.3	6.3	11.1	(NA)	(NA)	9.5
1992	3.0	4.8	1.8	5.8	3.3	5.8	6.6	(NA)	(NA)	7.6
1993	3.0	3.2	3.0	3.0	2.0	2.1	8.1	(NA)	(NA)	5.9
1994	2.6	2.7	0.3	3.1	1.9	3.9	4.4	(NA)	(NA)	4.7
1995	2.8	2.2	2.2	1.8	-1.0	3.8	1.8	(NA)	(NA)	3.4
1996	2.9	1.5	-0.1	1.2	0.9	2.8	2.5	(NA)	(NA)	4.5
1997	2.3	0.7	1.7	0.2	-1.0	-0.5	1.1	(NA)	(NA)	5.5
1998	1.6	-0.2	-0.1	-0.6	-4.3	-2.2	4.0	(NA)	(NA)	7.2
1995H1	3.0	2.1	3.2	1.8	-0.8	2.6	1.6	(NA)	(NA)	3.3
H2	2.6	2.2	1.2	1.9	-1.1	5.2	2.1	(NA)	(NA)	3.5
1996H1	2.8	2.2	0.3	2.0	1.6	3.9	3.4	(NA)	(NA)	2.9
H2	3.1	0.9	-0.5	0.5	0.0	1.7	1.5	(NA)	(NA)	6.0
1997H1	2.6	0.9	1.6	0.3	-0.2	0.9	0.3	(NA)	(NA)	5.4
H2	2.1	0.5	1.7	0.1	-1.8	-1.8	1.9	(NA)	(NA)	5.6
1998H1	1.5	-0.1	0.4	-0.6	-2.8	-2.7	3.2	(NA)	(NA)	9.4
H2	1.6	-0.5	-0.5	-0.7	-5.9	-1.7	4.9	(NA)	(NA)	5.1

Data on U.S. CPI are released monthly and Honolulu CPI, twice a year in February and August for the half (H) year previous.

NA Not available.

1/ New indexes as of January 1998. Base period is December 1997. The former "Entertainment" index has been discontinued.

Source: U.S. Bureau of Labor Statistics, <<http://stats.bls.gov>>, Fax-on-Demand (415) 975-4567, and Information (415) 975-4350.

## C. TAX REVENUES

Tax revenues to the state general fund grew slightly in the fourth quarter of 1998 relative to the year-earlier quarter. Reductions in revenue from the individual and corporate income tax were more than offset by an increase in receipts from the general excise tax.

General fund revenues grew by 0.9 percent from the fourth quarter of 1997 to the fourth quarter of 1998 (Table C-2). For the year as a whole, general fund tax revenue grew by 4.8 percent over 1997. This represented a dramatic change from last year when general fund revenues actually fell by 1.5 percent.

Growth in the revenues from the general excise and use tax (GEUT) explained all of the growth in general fund revenue for the fourth quarter but very little of the general fund growth for the year as a whole. GEUT revenue grew 2.2 percent from the last quarter of 1997 to the last quarter of 1998 (Table C-3). However, for the year as a whole, GEUT revenues grew by only 0.3 percent. A large drop in GEUT revenues in the second quarter of the year was largely attributed to lower eastbound visitor spending.

Individual income tax revenues fell by 1.5 percent from the fourth quarter of 1997 to the fourth quarter of 1998 (Table C-4). This followed four quarters of relatively rapid growth in income tax revenues. For the year as a whole, individual income tax revenue grew by a remarkable 11.0 percent. Indeed, this source of revenue has not seen such a high rate of growth since 1991.

However, a good portion of the individual income tax revenue growth came from technical factors. Especially in the first half of 1998, higher payments with returns and lower refunds resulted from the lowering of maximum withholding rates in October 1996. In the absence of individual withholding adjustments, lower withholding through 1997 implied higher tax payments with returns and lower refunds in the spring of 1998 (Tables C-6 and C-8).

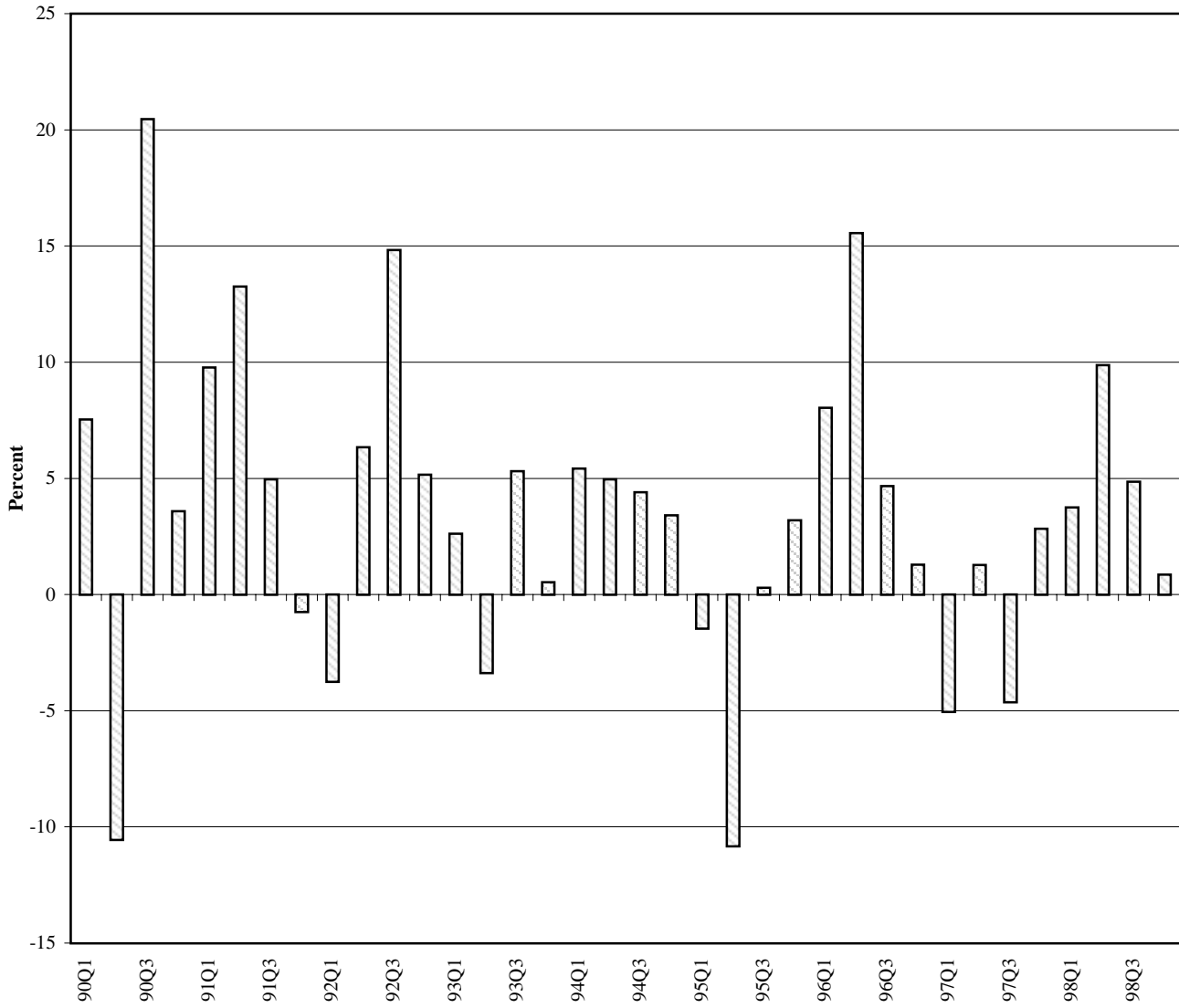
Still, some of the individual income tax revenue seemed to come from improved economic activity. Declarations of estimated taxes grew at an annual rate of about 20 percent for the last three quarters of 1998 (Table C-5). Withholding on wages also grew by 2.0 percent in 1998 over 1997; however, this important component of individual income tax revenue declined by 1.0 percent from the fourth quarter of 1997 to the fourth quarter of 1998 (Table C-7).

Corporate income tax revenue fell by 9.9 percent in 1998 compared to 1997 (Table C-9). Most of the decline came from lower declarations of taxes owed, but payments with returns also declined as did corporate refunds (Tables C-10 through C-12).

Transient accommodations tax revenues fell by 1.8 percent in the fourth quarter of 1998 relative to the fourth quarter of 1997 (Table C-13). Showing the third consecutive quarter of decline, these revenues dropped by 0.8 percent for the year. The decline seems to reflect the lower visitor arrivals from Asia.

**Figure 2. Annual Growth in General Fund Revenue**

[percentage change from same period in previous year]



Source: Table C-2. State General Fund Tax Revenues.



**Table C-1. GENERAL FUND TAX REVENUES AND MAJOR COMPONENTS**

<i>Year</i>	<i>General Excise and Use Tax</i>	<i>Net Individual Income Tax 1/</i>	<i>Net Corporate Income Tax 2/</i>	<i>Tax Revenues Distributed to State General Fund</i>
<b>In Thousands of Dollars</b>				
1990	1,250,203	743,114	86,269	2,246,752
1991	1,287,819	900,962	70,568	2,397,289
1992	1,299,814	922,206	42,737	2,523,672
1993	1,308,797	951,405	22,239	2,555,914
1994	1,347,945	1,003,479	34,228	2,672,293
1995	1,386,684	918,811	37,336	2,614,713
1996	1,469,766	995,456	51,243	2,799,972
1997	1,433,012	985,000	55,594	2,756,621
1998	1,436,654	1,093,243	50,113	2,889,291
1997				
1 Qtr.	365,069	227,409	18,055	688,683
2 Qtr.	366,563	213,468	32,330	676,222
3 Qtr.	356,533	269,597	10,594	704,749
4 Qtr.	344,846	274,526	-5,386	686,966
1998				
1 Qtr.	375,018	247,815	10,593	714,466
2 Qtr.	348,955	291,713	30,409	743,002
3 Qtr.	360,313	283,430	15,479	738,957
4 Qtr.	352,367	270,284	-6,369	692,865
<b>Percentage Change from the Same Period in Previous Year</b>				
1991	3.0	21.2	-18.2	6.7
1992	0.9	2.4	-39.4	5.3
1993	0.7	3.2	-48.0	1.3
1994	3.0	5.5	53.9	4.6
1995	2.9	-8.4	9.1	-2.2
1996	6.0	8.3	37.2	7.1
1997	-2.5	-1.1	8.5	-1.5
1998	0.3	11.0	-9.9	4.8
1997				
1 Qtr.	-5.6	-6.1	16.9	-5.0
2 Qtr.	2.6	-2.0	14.1	1.3
3 Qtr.	-5.9	-2.6	6.9	-4.6
4 Qtr.	-0.5	6.2	-119.3	2.8
1998				
1 Qtr.	2.7	9.0	-41.3	3.7
2 Qtr.	-4.8	36.7	-5.9	9.9
3 Qtr.	1.1	5.1	46.1	4.9
4 Qtr.	2.2	-1.5	-18.3	0.9

These series represent data as reported by the Hawaii State Department of Taxation, without adjustment.

1/ Declaration of estimated taxes, plus payments with returns, plus withholding tax on wages, less refunds.

2/ Declaration of estimated taxes, plus payments with returns, less refunds.

Source: Hawaii State Department of Taxation.

**Table C-2. STATE GENERAL FUND TAX REVENUES**

<i>Year</i>	<i>First Quarter</i>	<i>Second Quarter</i>	<i>Third Quarter</i>	<i>Fourth Quarter</i>	<i>Annual</i>
In Thousands of Dollars					
1982	248,406	219,138	284,382	259,539	1,011,465
1983	267,914	270,680	295,506	275,775	1,109,875
1984	293,272	313,706	317,325	316,049	1,240,352
1985	315,085	344,414	344,675	321,618	1,325,792
1986	347,122	393,177	377,599	368,586	1,486,484
1987	400,594	461,714	430,015	438,903	1,731,226
1988	466,093	514,559	483,626	484,896	1,949,174
1989	554,240	593,091	441,009	568,663	2,157,003
1990	595,969	530,495	531,250	589,038	2,246,752
1991	654,221	600,830	557,568	584,670	2,397,289
1992	629,723	638,901	640,253	614,795	2,523,672
1993	646,217	617,400	674,237	618,060	2,555,914
1994	681,253	647,987	703,935	639,118	2,672,293
1995	671,365	577,802	705,998	659,548	2,614,713
1996	725,284	667,711	738,963	668,014	2,799,972
1997	688,683	676,222	704,749	686,967	2,756,621
1998	714,466	743,002	738,957	692,865	2,889,291
Percentage Change from the Same Period in Previous Year					
1982	1.7	-25.6	5.0	-0.6	-5.5
1983	7.9	23.5	3.9	6.3	9.7
1984	9.5	15.9	7.4	14.6	11.8
1985	7.4	9.8	8.6	1.8	6.9
1986	10.2	14.2	9.6	14.6	12.1
1987	15.4	17.4	13.9	19.1	16.5
1988	16.4	11.4	12.5	10.5	12.6
1989	18.9	15.3	-8.8	17.3	10.7
1990	7.5	-10.6	20.5	3.6	4.2
1991	9.8	13.3	5.0	-0.7	6.7
1992	-3.7	6.3	14.8	5.2	5.3
1993	2.6	-3.4	5.3	0.5	1.3
1994	5.4	5.0	4.4	3.4	4.6
1995	-1.5	-10.8	0.3	3.2	-2.2
1996	8.0	15.6	4.7	1.3	7.1
1997	-5.0	1.3	-4.6	2.8	-1.5
1998	3.7	9.9	4.9	0.9	4.8

Source: Hawaii State Department of Taxation.

**Table C-3. GENERAL EXCISE & USE TAX REVENUES**

<i>Year</i>	<i>First Quarter</i>	<i>Second Quarter</i>	<i>Third Quarter</i>	<i>Fourth Quarter</i>	<i>Annual</i>
In Thousands of Dollars					
1982	141,147	147,532	151,149	134,762	574,590
1983	155,780	159,436	151,498	148,822	615,536
1984	165,120	173,806	165,634	165,245	669,805
1985	174,054	178,697	176,769	177,860	707,380
1986	192,020	200,048	198,275	187,619	777,962
1987	216,699	214,933	219,312	218,095	869,039
1988	240,507	241,952	241,341	242,153	965,953
1989	270,801	270,683	272,645	282,347	1,096,476
1990	313,129	308,567	314,328	314,180	1,250,203
1991	345,988	304,240	335,721	301,869	1,287,819
1992	338,288	318,844	325,339	317,342	1,299,814
1993	332,689	327,549	332,661	315,899	1,308,797
1994	353,369	330,321	345,770	318,483	1,347,945
1995	363,101	335,907	348,033	339,644	1,386,684
1996	386,710	357,416	379,032	346,610	1,469,766
1997	365,069	366,563	356,533	344,846	1,433,012
1998	375,018	348,955	360,313	352,367	1,436,654
Percentage Change from the Same Period in Previous Year					
1982	4.8	-3.1	2.1	-3.9	-0.1
1983	10.4	8.1	0.2	10.4	7.1
1984	6.0	9.0	9.3	11.0	8.8
1985	5.4	2.8	6.7	7.6	5.6
1986	10.3	11.9	12.2	5.5	10.0
1987	12.9	7.4	10.6	16.2	11.7
1988	11.0	12.6	10.0	11.0	11.2
1989	12.6	11.9	13.0	16.6	13.5
1990	15.6	14.0	15.3	11.3	14.0
1991	10.5	-1.4	6.8	-3.9	3.0
1992	-2.2	4.8	-3.1	5.1	0.9
1993	-1.7	2.7	2.3	-0.5	0.7
1994	6.2	0.8	3.9	0.8	3.0
1995	2.8	1.7	0.7	6.6	2.9
1996	6.5	6.4	8.9	2.1	6.0
1997	-5.6	2.6	-5.9	-0.5	-2.5
1998	2.7	-4.8	1.1	2.2	0.3

Manufactured goods shipped out of state have been exempted from the general excise tax by Act 239, SLH 1987, effective January 1, 1988.

Source: Hawaii State Department of Taxation.

**Table C-4. NET INDIVIDUAL INCOME TAX REVENUES**

<i>Year</i>	<i>First Quarter</i>	<i>Second Quarter</i>	<i>Third Quarter</i>	<i>Fourth Quarter</i>	<i>Annual</i>
In Thousands of Dollars					
1982	85,670	12,566	98,191	100,330	296,757
1983	94,313	54,183	107,922	101,656	358,074
1984	112,152	81,344	111,966	108,421	413,883
1985	108,567	100,302	125,692	111,797	446,358
1986	125,668	99,847	129,119	135,551	490,185
1987	134,394	143,625	138,773	157,937	574,729
1988	159,294	170,004	168,975	182,516	680,789
1989	205,080	211,019	176,719	209,182	802,000
1990	201,604	107,592	215,990	217,928	743,114
1991	252,599	186,218	240,437	221,709	900,962
1992	228,846	215,991	244,012	233,356	922,206
1993	233,868	211,674	262,952	242,909	951,405
1994	236,379	220,302	281,470	265,326	1,003,479
1995	224,594	154,310	277,057	262,848	918,811
1996	242,262	217,770	276,896	258,539	995,456
1997	227,409	213,468	269,597	274,526	985,000
1998	247,815	291,713	283,430	270,284	1,093,241
Percentage Change from the Same Period in Previous Year					
1982	2.9	-84.6	5.8	9.1	-15.1
1983	10.1	331.2	9.9	1.3	20.7
1984	18.9	50.1	3.7	6.7	15.6
1985	-3.2	23.3	12.3	3.1	7.8
1986	15.8	-0.5	2.7	21.2	9.8
1987	6.9	43.8	7.5	16.5	17.2
1988	18.5	18.4	21.8	15.6	18.5
1989	28.7	24.1	4.6	14.6	17.8
1990	-1.7	-49.0	22.2	4.2	-7.3
1991	25.3	73.1	11.3	1.7	21.2
1992	-9.4	16.0	1.5	5.3	2.4
1993	2.2	-2.0	7.8	4.1	3.2
1994	1.1	4.1	7.0	9.2	5.5
1995	-5.0	-30.0	-1.6	-0.9	-8.4
1996	7.9	41.1	-0.1	-1.6	8.3
1997	-6.1	-2.0	-2.6	6.2	-1.1
1998	9.0	36.7	5.1	-1.5	11.0

Net Individual Income tax includes declaration of estimated taxes plus payments with returns plus withholding tax on wages less refunds.

Source: Hawaii State Department of Taxation.

**Table C-5. DECLARATION OF ESTIMATED TAXES - INDIVIDUAL**

<i>Year</i>	<i>First Quarter</i>	<i>Second Quarter</i>	<i>Third Quarter</i>	<i>Fourth Quarter</i>	<i>Annual</i>
In Thousands of Dollars					
1982	10,662	15,533	8,515	4,669	39,379
1983	10,618	16,827	8,374	5,895	41,713
1984	11,135	19,528	9,843	6,049	46,555
1985	13,053	24,046	11,262	4,606	52,967
1986	18,072	24,902	10,271	11,275	64,520
1987	24,231	36,322	11,001	17,992	89,546
1988	32,825	46,532	19,783	20,040	119,180
1989	54,823	60,433	22,283	24,566	162,105
1990	54,441	54,768	31,377	29,780	170,366
1991	83,830	72,867	36,622	22,117	215,436
1992	49,739	68,535	31,351	17,657	167,282
1993	48,739	59,890	40,903	17,163	166,695
1994	46,629	60,086	31,385	16,766	154,866
1995	34,625	56,884	28,114	16,929	136,552
1996	35,618	63,964	30,363	21,420	151,365
1997	39,376	69,322	32,743	24,805	166,246
1998	41,013	83,620	40,061	29,539	194,233
Percentage Change from the Same Period in Previous Year					
1982	-2.8	-1.3	-8.5	-20.3	-6.0
1983	-0.4	8.3	-1.7	26.3	5.9
1984	4.9	16.1	17.5	2.6	11.6
1985	17.2	23.1	14.4	-23.9	13.8
1986	38.5	3.6	-8.8	144.8	21.8
1987	34.1	45.9	7.1	59.6	38.8
1988	35.5	28.1	79.8	11.4	33.1
1989	67.0	29.9	12.6	22.6	36.0
1990	-0.7	-9.4	40.8	21.2	5.1
1991	54.0	33.0	16.7	-25.7	26.5
1992	-40.7	-5.9	-14.4	-20.2	-22.4
1993	-2.0	-12.6	30.5	-2.8	-0.4
1994	-4.3	0.3	-23.3	-2.3	-7.1
1995	-25.7	-5.3	-10.4	1.0	-11.8
1996	2.9	12.4	8.0	26.5	10.8
1997	10.6	8.4	7.8	15.8	9.8
1998	4.2	20.6	22.3	19.1	16.8

Source: Hawaii State Department of Taxation.

**Table C-6. PAYMENT WITH RETURNS - INDIVIDUAL**

<i>Year</i>	<i>First Quarter</i>	<i>Second Quarter</i>	<i>Third Quarter</i>	<i>Fourth Quarter</i>	<i>Annual</i>
In Thousands of Dollars					
1982	3,124	20,064	1,572	1,224	25,984
1983	4,293	19,810	2,317	2,493	28,914
1984	4,544	24,776	2,670	2,793	34,783
1985	4,804	30,817	3,397	1,791	40,809
1986	3,382	32,043	4,365	3,256	43,046
1987	5,798	40,987	5,304	4,677	56,766
1988	7,483	47,589	7,326	5,765	68,163
1989	6,877	59,173	7,111	7,410	80,571
1990	6,756	50,732	8,200	7,647	73,335
1991	5,705	66,502	9,112	7,423	88,742
1992	9,151	58,339	7,405	7,033	81,928
1993	7,809	52,486	8,955	6,862	76,112
1994	9,389	44,084	7,194	7,849	68,516
1995	9,613	35,704	6,645	7,610	59,572
1996	8,726	43,125	7,072	7,452	66,375
1997	8,594	47,162	7,039	10,586	73,381
1998	10,673	65,897	9,645	7,732	93,947
Percentage Change from the Same Period in Previous Year					
1982	7.8	-25.4	-12.1	-17.1	-21.4
1983	37.4	-1.3	47.4	103.7	11.3
1984	5.8	25.1	15.2	12.0	20.3
1985	5.7	24.4	27.2	-35.9	17.3
1986	-29.6	4.0	28.5	81.8	5.5
1987	71.4	27.9	21.5	43.6	31.9
1988	29.1	16.1	38.1	23.3	20.1
1989	-8.1	24.3	-2.9	28.5	18.2
1990	-1.8	-14.3	15.3	3.2	-9.0
1991	-15.6	31.1	11.1	-2.9	21.0
1992	60.4	-12.3	-18.7	-5.3	-7.7
1993	-14.7	-10.0	20.9	-2.4	-7.1
1994	20.2	-16.0	-19.7	14.4	-10.0
1995	2.4	-19.0	-7.6	-3.0	-13.1
1996	-9.2	20.8	6.4	-2.1	11.4
1997	-1.5	9.4	-0.5	42.1	10.6
1998	24.2	39.7	37.0	-27.0	28.0

Source: Hawaii State Department of Taxation.

**Table C-7. WITHHOLDING TAX ON WAGES - INDIVIDUAL**

<i>Year</i>	<i>First Quarter</i>	<i>Second Quarter</i>	<i>Third Quarter</i>	<i>Fourth Quarter</i>	<i>Annual</i>
In Thousands of Dollars					
1982	94,279	82,909	97,494	97,677	372,359
1983	103,313	97,717	105,636	96,360	403,025
1984	112,648	104,792	111,813	102,881	432,134
1985	114,606	111,849	118,663	113,646	458,764
1986	121,509	118,875	126,057	126,629	493,070
1987	134,034	133,524	135,161	140,521	543,240
1988	155,432	151,872	154,805	163,618	625,727
1989	180,767	174,513	174,237	187,231	716,748
1990	197,928	191,244	198,961	195,611	783,744
1991	227,136	205,838	221,287	215,701	869,962
1992	238,334	220,439	226,698	223,664	909,135
1993	255,000	230,927	233,087	230,763	949,777
1994	267,686	250,469	261,194	253,142	1,032,491
1995	277,740	254,134	266,300	253,661	1,051,835
1996	275,532	263,054	261,439	245,464	1,045,489
1997	260,822	244,152	247,865	253,504	1,006,343
1998	266,564	259,813	249,448	251,041	1,026,866
Percentage Change from the Same Period in Previous Year					
1982	17.3	-5.5	6.7	12.6	7.6
1983	9.6	17.9	8.4	-1.3	8.2
1984	9.0	7.2	5.8	6.8	7.2
1985	1.7	6.7	6.1	10.5	6.2
1986	6.0	6.3	6.2	11.4	7.5
1987	10.3	12.3	7.2	11.0	10.2
1988	16.0	13.7	14.5	16.4	15.2
1989	16.3	14.9	12.6	14.4	14.5
1990	9.5	9.6	14.2	4.5	9.3
1991	14.8	7.6	11.2	10.3	11.0
1992	4.9	7.1	2.4	3.7	4.5
1993	7.0	4.8	2.8	3.2	4.5
1994	5.0	8.5	12.1	9.7	8.7
1995	3.8	1.5	2.0	0.2	1.9
1996	-0.8	3.5	-1.8	-3.2	-0.6
1997	-5.3	-7.2	-5.2	3.3	-3.7
1998	2.2	6.4	0.6	-1.0	2.0

Source: Hawaii State Department of Taxation.

**Table C-8. REFUNDS - INDIVIDUAL**

<i>Year</i>	<i>First Quarter</i>	<i>Second Quarter</i>	<i>Third Quarter</i>	<i>Fourth Quarter</i>	<i>Annual</i>
In Thousands of Dollars					
1982	22,394	105,940	9,390	3,240	140,964
1983	23,912	80,170	8,405	3,092	115,580
1984	16,173	67,750	12,361	3,299	99,583
1985	23,897	66,411	7,629	4,045	101,982
1986	17,294	75,973	11,572	5,608	110,447
1987	29,669	67,207	12,692	5,252	114,820
1988	36,446	75,988	12,940	6,907	132,281
1989	37,420	83,099	26,911	10,025	157,455
1990	57,520	189,152	22,546	15,110	284,328
1991	64,071	158,990	26,586	23,535	273,182
1992	68,376	131,323	21,442	14,998	236,139
1993	77,680	131,627	19,993	11,879	241,179
1994	87,325	134,337	18,302	12,429	252,393
1995	97,385	192,412	24,002	15,352	329,151
1996	77,623	152,373	21,979	15,796	267,771
1997	81,384	147,169	18,050	14,370	260,973
1998	70,435	117,616	15,724	18,029	221,804
Percentage Change from the Same Period in Previous Year					
1982	103.7	117.7	-3.1	53.3	97.3
1983	6.8	-24.3	-10.5	-4.6	-18.0
1984	-32.4	-15.5	47.1	6.7	-13.8
1985	47.8	-2.0	-38.3	22.6	2.4
1986	-27.6	14.4	51.7	38.6	8.3
1987	71.6	-11.5	9.7	-6.3	4.0
1988	22.8	13.1	2.0	31.5	15.2
1989	2.7	9.4	108.0	45.1	19.0
1990	53.7	127.6	-16.2	50.7	80.6
1991	11.4	-15.9	17.9	55.8	-3.9
1992	6.7	-17.4	-19.3	-36.3	-13.6
1993	13.6	0.2	-6.8	-20.8	2.1
1994	12.4	2.1	-8.5	4.6	4.6
1995	11.5	43.2	31.1	23.5	30.4
1996	-20.3	-20.8	-8.4	2.9	-18.6
1997	4.8	-3.4	-17.9	-9.0	-2.5
1998	-13.5	-20.1	-12.9	25.5	-15.0

Source: Hawaii State Department of Taxation.



**Table C-9. NET CORPORATE INCOME TAX REVENUES**

<i>Year</i>	<i>First Quarter</i>	<i>Second Quarter</i>	<i>Third Quarter</i>	<i>Fourth Quarter</i>	<i>Annual</i>
In Thousands of Dollars					
1982	10,512	15,604	7,295	1,373	34,784
1983	6,456	9,343	11,330	831	27,960
1984	9,587	14,681	10,437	4,975	39,680
1985	7,522	21,904	11,552	3,097	44,075
1986	7,783	17,157	14,901	6,375	46,216
1987	13,647	26,592	17,857	9,176	67,272
1988	18,134	20,849	16,226	7,884	63,093
1989	23,520	24,710	18,756	5,690	72,676
1990	22,506	27,903	29,076	6,783	86,269
1991	23,720	36,369	11,090	-611	70,568
1992	17,438	15,863	11,156	-1,721	42,737
1993	6,535	13,374	13,513	-11,185	22,239
1994	10,452	26,213	9,133	-11,572	34,228
1995	12,869	19,818	12,030	-7,380	37,336
1996	15,451	28,338	9,910	-2,456	51,243
1997	18,055	32,330	10,594	-5,386	55,594
1998	10,593	30,409	15,479	-6,369	50,113
Percentage Change from the Same Period in Previous Year					
1982	4.7	-23.3	-24.8	-60.7	-20.2
1983	-38.6	-40.1	55.3	-39.5	-19.6
1984	48.5	57.1	-7.9	498.7	41.9
1985	-21.5	49.2	10.7	-37.7	11.1
1986	3.5	-21.7	29.0	105.8	4.9
1987	75.3	55.0	19.8	43.9	45.6
1988	32.9	-21.6	-9.1	-14.1	-6.2
1989	29.7	18.5	15.6	-27.8	15.2
1990	-4.3	12.9	55.0	19.2	18.7
1991	5.4	30.3	-61.9	-109.0	-18.2
1992	-26.5	-56.4	0.6	-181.7	-39.4
1993	-62.5	-15.7	21.1	-549.9	-48.0
1994	59.9	96.0	-32.4	-3.5	53.9
1995	23.1	-24.4	31.7	36.2	9.1
1996	20.1	43.0	-17.6	66.7	37.2
1997	16.9	14.1	6.9	-119.3	8.5
1998	-41.3	-5.9	46.1	-18.3	-9.9

Net Corporation Income tax includes declaration of estimated taxes plus payments with returns less refunds.

Source: Hawaii State Department of Taxation.

**Table C-10. DECLARATION OF ESTIMATED TAXES - CORPORATE**

<i>Year</i>	<i>First Quarter</i>	<i>Second Quarter</i>	<i>Third Quarter</i>	<i>Fourth Quarter</i>	<i>Annual</i>
In Thousands of Dollars					
1982	10,316	13,980	7,696	3,914	35,906
1983	8,427	9,854	11,008	4,720	34,009
1984	10,363	14,272	10,344	5,435	40,414
1985	10,065	20,703	11,204	4,920	46,892
1986	6,899	16,141	13,783	8,228	45,051
1987	13,848	25,171	18,229	8,651	65,899
1988	18,559	21,577	17,944	8,733	66,813
1989	23,598	23,157	19,775	9,818	76,348
1990	24,237	29,810	29,837	15,853	99,737
1991	28,257	38,850	21,596	12,848	101,551
1992	23,809	20,507	17,337	12,358	74,011
1993	17,294	17,203	19,955	10,231	64,683
1994	18,048	29,934	19,093	10,074	77,149
1995	17,214	26,846	16,498	10,199	70,757
1996	22,423	30,651	15,409	12,076	80,559
1997	21,650	33,029	19,673	14,235	88,587
1998	15,930	33,419	19,273	13,035	81,657
Percentage Change from the Same Period in Previous Year					
1982	-6.0	-23.6	-12.9	-10.0	-15.4
1983	-18.3	-29.5	43.0	20.6	-5.3
1984	23.0	44.8	-6.0	15.1	18.8
1985	-2.9	45.1	8.3	-9.5	16.0
1986	-31.5	-22.0	23.0	67.2	-3.9
1987	100.7	55.9	32.3	5.1	46.3
1988	34.0	-14.3	-1.6	0.9	1.4
1989	27.2	7.3	10.2	12.4	14.3
1990	2.7	28.7	50.9	61.5	30.6
1991	16.6	30.3	-27.6	-19.0	1.8
1992	-15.7	-47.2	-19.7	-3.8	-27.1
1993	-27.4	-16.1	15.1	-17.2	-12.6
1994	4.4	74.0	-4.3	-1.5	19.3
1995	-4.6	-10.3	-13.6	1.2	-8.3
1996	30.3	14.2	-6.6	18.4	13.9
1997	-3.4	7.8	27.7	17.9	10.0
1998	-26.4	1.2	-2.0	-8.4	-7.8

Source: Hawaii State Department of Taxation.

**Table C-11. PAYMENT WITH RETURNS - CORPORATE**

<i>Year</i>	<i>First Quarter</i>	<i>Second Quarter</i>	<i>Third Quarter</i>	<i>Fourth Quarter</i>	<i>Annual</i>
In Thousands of Dollars					
1982	1,014	2,317	403	-668	3,065
1983	-1,131	306	1,221	-2,651	-2,255
1984	-57	1,416	763	39	2,161
1985	-1,553	1,889	1,210	240	1,786
1986	1,083	2,239	2,346	1,742	7,410
1987	2,517	2,993	1,864	3,495	10,869
1988	1,783	3,152	2,734	3,285	10,954
1989	2,170	3,868	2,062	3,348	11,448
1990	3,061	2,398	3,374	4,221	13,054
1991	3,335	4,006	2,302	2,708	12,351
1992	6,467	2,740	1,555	2,847	13,609
1993	4,320	1,881	2,899	2,150	11,250
1994	3,009	1,470	3,086	2,256	9,821
1995	1,924	1,531	1,796	1,640	6,891
1996	1,999	2,586	1,781	3,917	10,283
1997	2,273	3,481	2,126	2,410	10,290
1998	2,043	1,199	1,358	3,056	7,656
Percentage Change from the Same Period in Previous Year					
1982	430.8	0.2	-74.8	-171.8	-39.1
1983	-211.5	-86.8	203.2	-296.6	-173.6
1984	95.0	362.3	-37.5	101.5	195.8
1985	-2624.6	33.4	58.6	515.4	-17.4
1986	169.7	18.5	93.9	625.8	314.9
1987	132.4	33.7	-20.5	100.6	46.7
1988	-29.2	5.3	46.7	-6.0	0.8
1989	21.7	22.7	-24.6	1.9	4.5
1990	41.1	-38.0	63.6	26.1	14.0
1991	9.0	67.1	-31.8	-35.8	-5.4
1992	93.9	-31.6	-32.5	5.1	10.2
1993	-33.2	-31.4	86.4	-24.5	-17.3
1994	-30.3	-21.9	6.5	4.9	-12.7
1995	-36.1	4.1	-41.8	-27.3	-29.8
1996	3.9	68.9	-0.8	138.8	49.2
1997	13.7	34.6	19.4	-38.5	0.1
1998	-10.1	-65.6	-36.1	26.8	-25.6

Source: Hawaii State Department of Taxation.

**Table C-12. REFUNDS - CORPORATE**

<i>Year</i>	<i>First Quarter</i>	<i>Second Quarter</i>	<i>Third Quarter</i>	<i>Fourth Quarter</i>	<i>Annual</i>
In Thousands of Dollars					
1982	818	694	804	1,872	4,188
1983	842	817	898	1,239	3,795
1984	717	1,007	668	499	2,891
1985	993	689	863	2,061	4,606
1986	198	1,223	1,227	3,595	6,243
1987	2,719	1,572	2,235	2,970	9,496
1988	2,208	3,878	4,451	4,134	14,671
1989	2,215	2,315	3,080	7,477	15,087
1990	4,792	4,305	4,136	13,291	26,524
1991	7,872	6,487	12,809	16,167	43,335
1992	12,837	7,384	7,735	16,927	44,883
1993	15,081	5,710	9,340	23,566	53,697
1994	10,605	5,191	13,045	23,901	52,742
1995	6,270	8,559	6,264	19,219	40,312
1996	8,971	4,899	7,281	18,449	39,600
1997	5,869	4,179	11,205	22,031	43,284
1998	7,381	4,210	5,151	22,459	39,201
Percentage Change from the Same Period in Previous Year					
1982	-27.2	163.5	10.1	4.8	7.3
1983	2.9	17.7	11.6	-33.8	-9.4
1984	-14.8	23.3	-25.6	-59.7	-23.8
1985	38.5	-31.6	29.2	313.0	59.3
1986	-80.1	77.5	42.2	74.4	35.5
1987	1273.2	28.5	82.2	-17.4	52.1
1988	-18.8	146.7	99.1	39.2	54.5
1989	0.3	-40.3	-30.8	80.9	2.8
1990	116.3	86.0	34.3	77.8	75.8
1991	64.3	50.7	209.7	21.6	63.4
1992	63.1	13.8	-39.6	4.7	3.6
1993	17.5	-22.7	20.7	39.2	19.6
1994	-29.7	-9.1	39.7	1.4	-1.8
1995	-40.9	64.9	-52.0	-19.6	-23.6
1996	43.1	-42.8	16.2	-4.0	-1.8
1997	-34.6	-14.7	53.9	19.4	9.3
1998	25.8	0.7	-54.0	1.9	-9.4

Source: Hawaii State Department of Taxation.

**Table C-13. TRANSIENT ACCOMMODATIONS TAX REVENUES**

<i>Year</i>	<i>First Quarter</i>	<i>Second Quarter</i>	<i>Third Quarter</i>	<i>Fourth Quarter</i>	<i>Annual</i>
In Thousands of Dollars					
1987 1/	7,216	16,294	16,163	13,554	53,227
1988	18,469	19,092	17,889	15,238	70,688
1989	20,822	22,022	18,438	19,712	80,994
1990	22,360	21,928	21,291	17,877	83,456
1991	20,926	19,127	20,019	17,858	77,930
1992	20,903	21,195	19,356	19,394	80,848
1993	20,893	20,665	17,155	16,692	75,405
1994 2/	22,908	19,765	22,254	21,570	86,497
1995	27,219	26,996	26,601	24,801	105,617
1996	34,193	30,146	32,397	27,246	123,983
1997	32,014	33,798	31,899	29,180	126,891
1998	34,048	31,949	31,231	28,654	125,882
Percentage Change from the Same Period in Previous Year					
1988	155.9	17.2	10.7	12.4	32.8
1989	12.7	15.3	3.1	29.4	14.6
1990	7.4	-0.4	15.5	-9.3	3.0
1991	-6.4	-12.8	-6.0	-0.1	-6.6
1992	-0.1	10.8	-3.3	8.6	3.7
1993	0.0	-2.5	-11.4	-13.9	-6.7
1994 2/	9.6	-4.4	29.7	29.2	14.7
1995	18.8	36.6	19.5	15.0	22.1
1996	25.6	11.7	21.8	9.9	17.4
1997	-6.4	12.1	-1.5	7.1	2.3
1998	6.4	-5.5	-2.1	-1.8	-0.8

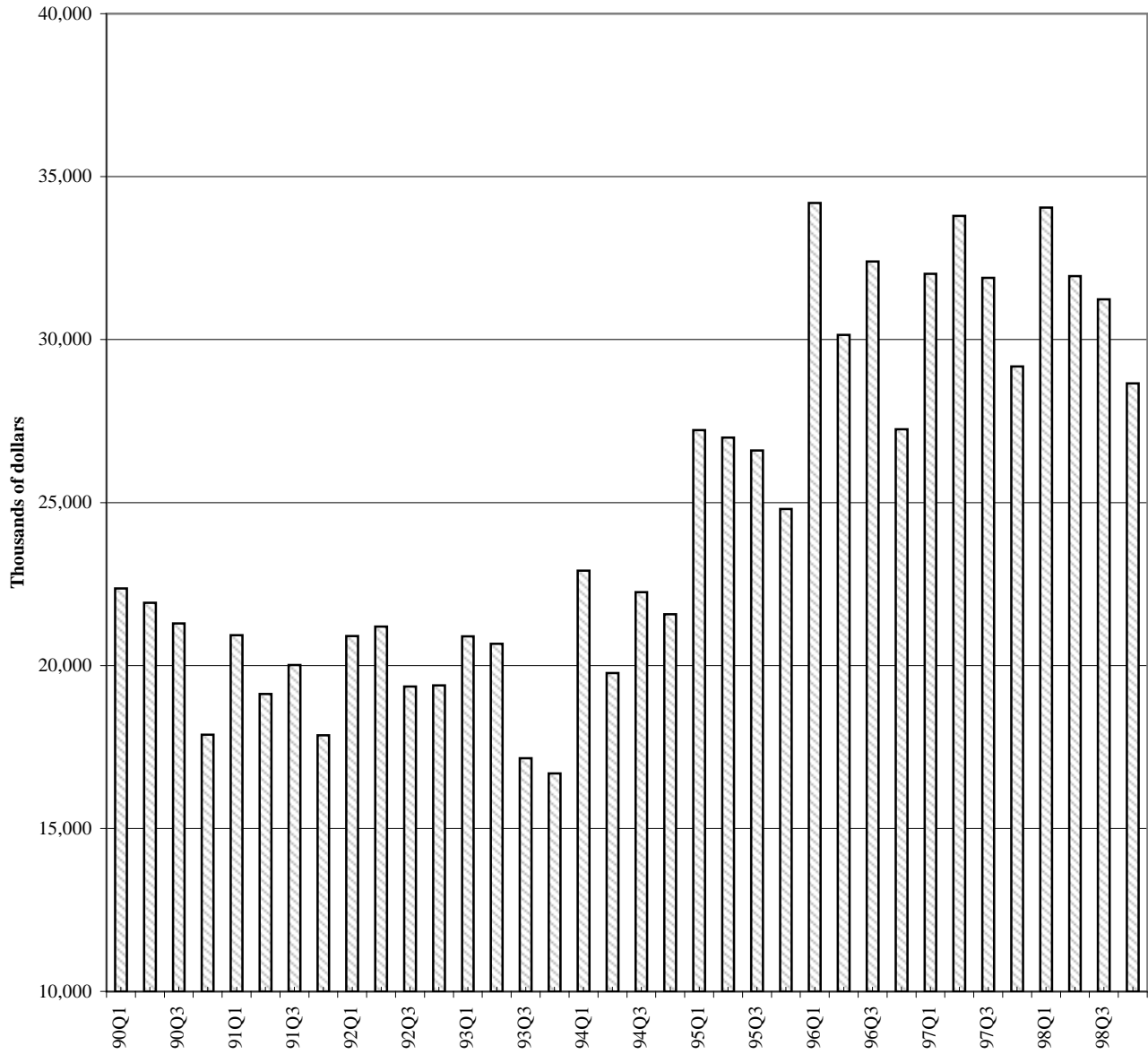
1/ Tax collection for this category began in 1987.

2/ Rate increased from 5% to 6% on 7/1/94.

Source: Hawaii State Department of Taxation.

**Figure 3. Transient Accommodations Tax Revenues**

[ Thousands of dollars ]



Source: Table C-13. Transient Accommodations Tax Revenues.

## D. TOURISM

The number of visitor arrivals fell again in the fourth quarter and was down for 1998 overall. The entire decline came from the eastbound direction as slower economic growth in Asia lowered the demand for travel. On the other hand, westbound arrivals continue to grow at a healthy pace and lengths of stay have been rising.

The total number of visitor arrivals fell by 2.9 percent from the fourth quarter of 1997 to the fourth quarter of 1998 (Table D-2). This was the fourth consecutive quarter of decline. For the year as a whole, total arrivals were down 1.9 percent from 1997.

The entire decline in arrivals has been due to lower eastbound arrivals. Eastbound visitor arrivals fell by 14.7 percent in the fourth quarter relative to 1997's fourth quarter level (Table D-4). For 1998 overall, eastbound arrivals were down 10.8 percent. At 2.5 million, eastbound arrivals were slightly ahead of the level reached in 1994.

Westbound arrivals, in contrast, have continued to grow at a healthy pace, perhaps partially reflecting a "wealth effect" from the strong financial markets. From the fourth quarter of 1997 to the fourth quarter of 1998 westbound arrivals grew by 5.1 percent. This is the sixth consecutive quarter of westbound growth. For 1998 as a whole, westbound arrivals were up 4.1 percent over 1997.

The average daily visitor census—the number of visitors in the State at a point in time actually increased by 2.4 percent from the fourth quarter of 1997 to the fourth quarter of 1998 (Table D-5). The average daily census was also up modestly (0.9 percent) for the year as a whole. Following the pattern in arrivals, eastbound visitor census fell by 8.0 percent from 1997 to 1998, while westbound visitor census rose by 4.3 percent over the year.

A rising census with falling arrivals implies growing lengths of stay. Table D-6 shows that for all visitors, the average length of stay increased to 8.62 days in 1998 from 8.38 days in 1997. Lengths of stay are significantly longer from westbound visitors (10.3 days in 1998) than from eastbound visitors (5.77 days). Yet lengths of stay have been rising for both groups.

Nevertheless, hotel occupancy rates are down. Table D-7 shows that in the fourth quarter of 1998 average occupancy rates fell to 67.5 percent from 70.0 percent in the fourth quarter of 1997. This is the lowest fourth-quarter occupancy rate since 1983. For the year as a whole, the average occupancy rate was 72.0 percent, down two percentage points from 1997.

**Table D-1. VISITOR ARRIVALS AND AVERAGE DAILY VISITOR CENSUS**

Year	Visitor Arrivals 1/			Average Visitors Present Daily		
	Total	Westbound	Eastbound	Total	Westbound	Eastbound
1985	4,884,110	3,708,610	1,175,500	116,700	103,820	12,880
1986	5,606,980	4,256,390	1,350,590	132,910	118,110	14,800
1987	5,799,830	4,204,010	1,595,820	134,270	116,780	17,490
1988	6,142,420	4,264,730	1,877,690	141,410	115,760	25,650
1989	6,641,820	4,705,320	1,936,500	169,670	135,480	34,190
1990	6,971,180	4,719,730	2,251,450	162,070	125,590	36,480
1991	6,873,890	4,584,460	2,289,430	157,590	121,330	36,260
1992	6,513,880	3,980,120	2,533,760	153,390	113,860	39,530
1993	6,124,230	3,764,520	2,359,710	148,750	108,090	40,660
1994	6,430,300	3,997,820	2,432,480	159,200	115,220	43,980
1995	6,629,180	3,933,110	2,696,070	159,060	113,040	46,020
1996	6,829,800	4,004,450	2,825,350	161,610	114,440	47,170
1997 2/	6,876,140	4,077,950	2,798,190	157,850	114,970	42,880
1998 2/	6,743,140	4,246,610	2,496,530	159,340	119,890	39,450
1997 2/ 1 Qtr.	1,729,650	1,038,290	691,360	170,100	126,293	43,807
2 Qtr.	1,649,090	995,630	653,460	148,533	108,713	39,820
3 Qtr.	1,827,010	1,044,620	782,390	158,323	110,660	47,663
4 Qtr.	1,670,390	999,410	670,980	154,440	114,287	40,153
1998 2/ 1 Qtr.	1,699,880	1,053,030	646,850	168,580	129,337	39,243
2 Qtr.	1,648,060	1,060,820	587,240	148,790	113,287	35,503
3 Qtr.	1,772,450	1,082,380	690,070	160,283	115,453	44,830
4 Qtr.	1,622,750	1,050,380	572,370	158,146	121,563	36,583
Percentage Change from the Same Period in Previous Year						
1985	0.6	-0.3	3.6	-1.7	-2.3	3.9
1986	14.8	14.8	14.9	13.9	13.8	14.9
1987	3.4	-1.2	18.2	1.0	-1.1	18.2
1988	5.9	1.4	17.7	5.3	-0.9	46.7
1989	8.1	10.3	3.1	20.0	17.0	33.3
1990	5.0	0.3	16.3	-4.5	-7.3	6.7
1991	-1.4	-2.9	1.7	-2.8	-3.4	-0.6
1992	-5.2	-13.2	10.7	-2.7	-6.2	9.0
1993	-6.0	-5.4	-6.9	-3.0	-5.1	2.9
1994	5.0	6.2	3.1	7.0	6.6	8.2
1995	3.1	-1.6	10.8	-0.1	-1.9	4.6
1996	3.0	1.8	4.8	1.6	1.2	2.5
1997 2/	0.7	1.8	-1.0	-2.3	0.5	-9.1
1998 2/	-1.9	4.1	-10.8	0.9	4.3	-8.0
1997 2/ 1 Qtr.	-0.5	-1.1	0.5	-3.0	-1.1	-8.2
2 Qtr.	-1.3	-1.5	-1.0	-4.3	-1.0	-12.5
3 Qtr.	0.7	2.2	-1.1	-0.7	0.7	-3.8
4 Qtr.	3.9	8.5	-2.3	-1.3	3.3	-12.5
1998 2/ 1 Qtr.	-1.7	1.4	-6.4	-0.9	2.4	-10.4
2 Qtr.	-0.1	6.5	-10.1	0.2	4.2	-10.8
3 Qtr.	-3.0	3.6	-11.8	1.2	4.3	-5.9
4 Qtr.	-2.9	5.1	-14.7	2.4	6.4	-8.9

1/ Staying overnight or longer.

2/ HVCB revised data for 1997 and 1998 in June, 1998.

Source: Hawaii Visitors & Convention Bureau.



**Table D-2. TOTAL VISITOR ARRIVALS**

<i>Year</i>	<i>First Quarter</i>	<i>Second Quarter</i>	<i>Third Quarter</i>	<i>Fourth Quarter</i>	<i>Annual</i>
In Thousands of Persons 1/					
1982	1,054.0	1,048.7	1,110.7	1,029.5	4,242.9
1983	1,069.9	1,071.5	1,146.4	1,080.2	4,368.1
1984	1,218.5	1,206.8	1,222.9	1,207.4	4,855.6
1985	1,301.5	1,129.6	1,266.9	1,186.2	4,884.1
1986	1,393.2	1,421.2	1,450.9	1,341.8	5,607.0
1987	1,448.9	1,370.0	1,555.2	1,425.8	5,799.8
1988	1,484.9	1,488.2	1,635.6	1,533.7	6,142.4
1989	1,683.7	1,605.1	1,754.8	1,598.3	6,641.8
1990	1,714.8	1,724.4	1,879.9	1,652.2	6,971.2
1991	1,509.5	1,727.2	1,958.3	1,678.9	6,873.9
1992	1,622.2	1,598.0	1,703.6	1,590.1	6,513.9
1993	1,559.6	1,476.3	1,588.9	1,499.5	6,124.2
1994	1,615.6	1,527.7	1,692.7	1,594.2	6,430.3
1995	1,609.4	1,593.0	1,788.4	1,638.5	6,629.2
1996	1,737.7	1,670.4	1,813.7	1,608.1	6,829.8
1997 2/	1,729.7	1,649.1	1,827.0	1,670.4	6,876.1
1998 2/	1,699.9	1,648.1	1,772.5	1,622.8	6,743.1
Percentage Change from the Same Period in Previous Year					
1982	9.9	6.5	6.6	8.5	7.8
1983	1.5	2.2	3.2	4.9	3.0
1984	13.9	12.6	6.7	11.8	11.2
1985	6.8	-6.4	3.6	-1.8	0.6
1986	7.0	25.8	14.5	13.1	14.8
1987	4.0	-3.6	7.2	6.3	3.4
1988	2.5	8.6	5.2	7.6	5.9
1989	13.4	7.9	7.3	4.2	8.1
1990	1.8	7.4	7.1	3.4	5.0
1991	-12.0	0.2	4.2	1.6	-1.4
1992	7.5	-7.5	-13.0	-5.3	-5.2
1993	-3.9	-7.6	-6.7	-5.7	-6.0
1994	3.6	3.5	6.5	6.3	5.0
1995	-0.4	4.3	5.6	2.8	3.1
1996	8.0	4.9	1.4	-1.9	3.0
1997 2/	-0.5	-1.3	0.7	3.9	0.7
1998 2/	-1.7	-0.1	-3.0	-2.9	-1.9

1/ Staying Overnight or Longer.

2/ Visitor arrivals for 1997 and 1998 revised by Hawaii Visitors & Convention Bureau in June 1998.

Source: Hawaii Visitors & Convention Bureau.

**Table D-3. WESTBOUND VISITOR ARRIVALS**

<i>Year</i>	<i>First Quarter</i>	<i>Second Quarter</i>	<i>Third Quarter</i>	<i>Fourth Quarter</i>	<i>Annual</i>
In Thousands of Persons 1/					
1982	828.0	795.9	865.6	789.1	3,278.5
1983	845.4	828.1	893.9	828.6	3,396.1
1984	954.3	923.0	922.8	921.3	3,721.4
1985	1,011.8	840.2	957.8	898.9	3,708.6
1986	1,087.6	1,094.3	1,073.1	1,001.4	4,256.4
1987	1,084.1	999.9	1,102.4	1,017.6	4,204.0
1988	1,047.4	1,028.8	1,088.1	1,100.4	4,264.7
1989	1,198.6	1,145.6	1,213.7	1,147.4	4,705.3
1990	1,179.4	1,189.3	1,245.3	1,105.7	4,719.7
1991	1,066.9	1,175.7	1,255.0	1,087.0	4,584.5
1992	995.8	976.5	1,004.6	1,003.3	3,980.1
1993	979.8	924.5	937.1	923.1	3,764.5
1994	1,019.3	979.1	1,009.8	989.6	3,997.8
1995	1,010.7	971.4	985.0	966.1	3,933.1
1996	1,050.1	1,010.6	1,022.4	921.3	4,004.5
1997 2/	1,038.3	995.6	1,044.6	999.4	4,078.0
1998 2/	1,053.0	1,060.8	1,082.4	1,050.4	4,246.6
Percentage Change from the Same Period in Previous Year					
1982	12.9	7.5	9.4	11.1	10.2
1983	2.1	4.1	3.3	5.0	3.6
1984	12.9	11.5	3.2	11.2	9.6
1985	6.0	-9.0	3.8	-2.4	-0.3
1986	7.5	30.2	12.0	11.4	14.8
1987	-0.3	-8.6	2.7	1.6	-1.2
1988	-3.4	2.9	-1.3	8.1	1.4
1989	14.4	11.4	11.5	4.3	10.3
1990	-1.6	3.8	2.6	-3.6	0.3
1991	-9.5	-1.1	0.8	-1.7	-2.9
1992	-6.7	-16.9	-19.9	-7.7	-13.2
1993	-1.6	-5.3	-6.7	-8.0	-5.4
1994	4.0	5.9	7.8	7.2	6.2
1995	-0.8	-0.8	-2.5	-2.4	-1.6
1996	3.9	4.0	3.8	-4.6	1.8
1997 2/	-1.1	-1.5	2.2	8.5	1.8
1998 2/	1.4	6.5	3.6	5.1	4.1

1/ Staying Overnight or Longer.

2/ Visitor arrivals for 1997 and 1998 revised by Hawaii Visitors & Convention Bureau on June 1998.

Source: Hawaii Visitors & Convention Bureau.

**Table D-4. EASTBOUND VISITOR ARRIVALS**

<i>Year</i>	<i>First Quarter</i>	<i>Second Quarter</i>	<i>Third Quarter</i>	<i>Fourth Quarter</i>	<i>Annual</i>
In Thousands of Persons 1/					
1982	226.1	252.8	245.2	240.4	964.4
1983	224.5	243.4	252.4	251.6	972.0
1984	264.2	283.8	300.1	286.1	1,134.2
1985	289.7	289.4	309.1	287.3	1,175.5
1986	305.5	326.9	377.7	340.4	1,350.6
1987	364.8	370.1	452.8	408.2	1,595.8
1988	437.5	459.4	547.5	433.3	1,877.7
1989	485.1	459.6	541.0	450.9	1,936.5
1990	535.3	535.1	634.6	546.5	2,251.5
1991	442.6	551.5	703.3	592.0	2,289.4
1992	626.4	621.5	699.0	586.9	2,533.8
1993	579.8	551.7	651.7	576.4	2,359.7
1994	596.3	548.6	682.9	604.6	2,432.5
1995	598.7	621.6	803.4	672.4	2,696.1
1996	687.6	659.8	791.2	686.7	2,825.4
1997 2/	691.4	653.5	782.4	671.0	2,798.2
1998 2/	646.9	587.2	690.1	572.4	2,496.5
Percentage Change from the Same Period in Previous Year					
1982	0.1	3.5	-2.3	0.7	0.5
1983	-0.7	-3.7	3.0	4.7	0.8
1984	17.7	16.6	18.9	13.7	16.7
1985	9.6	2.0	3.0	0.4	3.6
1986	5.5	13.0	22.2	18.5	14.9
1987	19.4	13.2	19.9	19.9	18.2
1988	19.9	24.1	20.9	6.2	17.7
1989	10.9	0.0	-1.2	4.0	3.1
1990	10.4	16.4	17.3	21.2	16.3
1991	-17.3	3.1	10.8	8.3	1.7
1992	41.5	12.7	-0.6	-0.9	10.7
1993	-7.4	-11.2	-6.8	-1.8	-6.9
1994	2.8	-0.6	4.8	4.9	3.1
1995	0.4	13.3	17.6	11.2	10.8
1996	14.9	6.1	-1.5	2.1	4.8
1997 2/	0.5	-1.0	-1.1	-2.3	-1.0
1998 2/	-6.4	-10.1	-11.8	-14.7	-10.8

1/ Staying Overnight or Longer.

2/ Visitor arrivals for 1997 and 1998 revised by Hawaii Visitors & Convention Bureau in June 1998.

Source: Hawaii Visitors & Convention Bureau.

**Table D-5. AVERAGE DAILY VISITOR CENSUS**

<i>Year</i>	<i>First Quarter</i>	<i>Second Quarter</i>	<i>Third Quarter</i>	<i>Fourth Quarter</i>	<i>Annual</i>
<b>Average Daily Visitors</b>					
1990	168,400	155,350	170,150	154,350	162,070
1991	149,950	161,200	171,400	146,750	157,590
1992	160,850	146,150	155,050	151,300	153,390
1993	157,500	137,700	151,800	148,000	148,750
1994	174,600	143,500	157,450	161,400	159,200
1995	167,450	149,200	162,750	156,800	159,060
1996	175,384	155,255	159,437	156,513	161,610
1997	170,100	148,533	158,323	154,440	157,850
1998	168,580	148,790	160,283	158,146	159,340
<b>Average Daily Westbound Visitors</b>					
1990	132,950	122,400	127,700	119,450	125,590
1991	119,350	127,150	127,350	110,800	121,330
1992	123,150	108,450	109,950	113,700	113,860
1993	119,900	101,800	103,200	107,600	108,090
1994	127,550	106,300	109,700	117,550	115,220
1995	124,350	106,450	107,750	113,800	113,040
1996	127,678	109,757	109,883	110,635	114,440
1997	126,293	108,713	110,660	114,287	114,970
1998	129,337	113,287	115,453	121,563	119,890
<b>Average Daily Eastbound Visitors</b>					
1990	35,450	32,950	42,450	34,900	36,480
1991	30,600	34,050	44,050	35,950	36,260
1992	37,700	37,700	45,100	37,600	39,530
1993	37,600	35,900	48,600	40,400	40,660
1994	47,050	37,200	47,750	43,850	43,980
1995	43,100	42,750	55,000	43,000	46,020
1996	47,706	45,498	49,554	45,879	47,170
1997	43,807	39,820	47,663	40,153	42,880
1998	39,243	35,503	44,830	36,583	39,450

Source: Hawaii Visitors & Convention Bureau.

**Table D-5. AVERAGE DAILY VISITOR CENSUS - Con.**

[percentage change from the same period in previous year]

<i>Year</i>	<i>First Quarter</i>	<i>Second Quarter</i>	<i>Third Quarter</i>	<i>Fourth Quarter</i>	<i>Annual</i>
<b>Average Daily Visitors</b>					
1991	-11.0	3.8	0.7	-4.9	-2.8
1992	7.3	-9.3	-9.5	3.1	-2.7
1993	-2.1	-5.8	-2.1	-2.2	-3.0
1994	10.9	4.2	3.7	9.1	7.0
1995	-4.1	4.0	3.4	-2.9	-0.1
1996	4.7	4.1	-2.0	-0.2	1.6
1997	-3.0	-4.3	-0.7	-1.3	-2.3
1998	-0.9	0.2	1.2	2.4	0.9
<b>Average Daily Westbound Visitors</b>					
1991	-10.2	3.9	-0.3	-7.2	-3.4
1992	3.2	-14.7	-13.7	2.6	-6.2
1993	-2.6	-6.1	-6.1	-5.4	-5.1
1994	6.4	4.4	6.3	9.2	6.6
1995	-2.5	0.1	-1.8	-3.2	-1.9
1996	2.7	3.1	2.0	-2.8	1.2
1997	-1.1	-1.0	0.7	3.3	0.5
1998	2.4	4.2	4.3	6.4	4.3
<b>Average Daily Eastbound Visitors</b>					
1991	-13.7	3.3	3.8	3.0	-0.6
1992	23.2	10.7	2.4	4.6	9.0
1993	-0.3	-4.8	7.8	7.4	2.9
1994	25.1	3.6	-1.7	8.5	8.2
1995	-8.4	14.9	15.2	-1.9	4.6
1996	10.7	6.4	-9.9	6.7	2.5
1997	-8.2	-12.5	-3.8	-12.5	-9.1
1998	-10.4	-10.8	-5.9	-8.9	-8.0

Source: Hawaii Visitors & Convention Bureau.

**Table D-6. Average Length of Stay in Hawaii**

<i>Year</i>	<i>First Quarter</i>	<i>Second Quarter</i>	<i>Third Quarter</i>	<i>Fourth Quarter</i>	<i>Annual</i>
Average Length of Stay in HI					
1990	8.84	8.20	8.33	8.59	8.49
1991	8.94	8.49	8.05	8.04	8.37
1992	9.02	8.32	8.37	8.75	8.62
1993	9.09	8.49	8.79	9.08	8.87
1994	9.73	8.55	8.56	9.31	9.04
1995	9.36	8.52	8.37	8.80	8.76
1996	9.18	8.46	8.09	8.95	8.66
1997	8.85	8.20	7.97	8.51	8.38
1998	8.93	8.22	8.32	8.97	8.62
Average Length of Stay in HI - Westbound					
1990	10.15	9.37	9.43	9.94	9.71
1991	10.07	9.84	9.34	9.38	9.66
1992	11.25	10.11	10.07	10.43	10.47
1993	11.01	10.02	10.13	10.72	10.48
1994	11.26	9.88	9.99	10.93	10.52
1995	11.07	9.97	10.06	10.84	10.49
1996	11.06	9.88	9.89	11.05	10.46
1997	10.95	9.94	9.75	10.52	10.29
1998	11.05	9.72	9.81	10.65	10.30
Average Length of Stay in HI - Eastbound					
1990	5.96	5.60	6.15	5.88	5.91
1991	6.22	5.62	5.76	5.59	5.78
1992	5.48	5.52	5.94	5.89	5.71
1993	5.84	5.92	6.86	6.45	6.29
1994	7.10	6.17	6.43	6.67	6.60
1995	6.48	6.26	6.30	5.88	6.23
1996	6.31	6.28	5.76	6.15	6.11
1997	5.70	5.55	5.60	5.51	5.59
1998	5.46	5.50	5.98	5.88	5.77

Source: Hawaii Visitors & Convention Bureau.

**Table D-6. Average Length of Stay in Hawaii - Con.**

[percentage change from the same period in previous year]

<i>Year</i>	<i>First Quarter</i>	<i>Second Quarter</i>	<i>Third Quarter</i>	<i>Fourth Quarter</i>	<i>Annual</i>
<b>Average Length of Stay in HI</b>					
1991	1.2	3.6	-3.3	-6.4	-1.4
1992	0.9	-2.0	4.0	8.9	3.0
1993	0.7	2.0	5.0	3.7	2.9
1994	7.0	0.7	-2.6	2.6	1.9
1995	-3.7	-0.3	-2.2	-5.5	-3.1
1996	-1.9	-0.8	-3.4	1.7	-1.1
1997	-3.6	-3.1	-1.4	-5.0	-3.2
1998	0.8	0.2	4.4	5.4	2.9
<b>Average Length of Stay in HI - Westbound</b>					
1991	-0.8	5.1	-1.0	-5.6	-0.5
1992	11.8	2.7	7.9	11.2	8.4
1993	-2.1	-0.9	0.6	2.9	0.1
1994	2.3	-1.4	-1.4	1.9	0.4
1995	-1.7	0.9	0.7	-0.8	-0.3
1996	-0.1	-0.9	-1.8	1.9	-0.3
1997	-1.1	0.5	-1.4	-4.8	-1.6
1998	1.0	-2.2	0.7	1.2	0.1
<b>Average Length of Stay in HI - Eastbound</b>					
1991	4.4	0.3	-6.4	-4.9	-2.3
1992	-12.0	-1.7	3.0	5.5	-1.2
1993	6.6	7.3	15.6	9.4	10.1
1994	21.7	4.2	-6.2	3.5	4.9
1995	-8.8	1.4	-2.1	-11.8	-5.6
1996	-2.6	0.3	-8.5	4.5	-1.9
1997	-9.7	-11.6	-2.7	-10.4	-8.5
1998	-4.3	-0.8	6.6	6.8	3.1

Source: Hawaii Visitors & Convention Bureau.

**Table D-7. HOTEL OCCUPANCY RATE**

<i>Year</i>	<i>First Quarter</i>	<i>Second Quarter</i>	<i>Third Quarter</i>	<i>Fourth Quarter</i>	<i>Annual</i>
In Percent					
1982	79.0	65.9	70.9	66.7	70.4
1983	75.2	68.1	71.7	66.5	69.7
1984	84.0	75.6	74.6	75.1	76.0
1985	88.1	69.1	75.0	72.5	76.1
1986	87.0	78.8	79.9	76.8	81.7
1987	88.0	77.1	82.1	77.8	81.1
1988	81.7	75.1	81.3	75.1	78.5
1989	85.9	73.9	81.0	75.7	79.0
1990	83.9	75.5	81.0	74.3	78.8
1991	68.2	70.7	79.7	72.5	72.4
1992	75.3	68.6	75.5	75.2	72.7
1993	75.3	67.9	73.8	72.5	72.0
1994	80.9	72.7	79.1	74.8	76.5
1995	80.2	72.6	80.4	75.4	76.6
1996	82.1	72.5	78.5	71.0	76.0
1997	79.3	70.3	76.2	70.0	74.0
1998	78.1	69.5	73.8	67.5	72.0

Quarterly averages are computed by Hawaii State Department of Business, Economic Development & Tourism from PKF monthly averages.

Sources: Hawaii State Department of Business, Economic Development & Tourism and PKF-Hawaii.



## E. CONSTRUCTION

While there was some growth in private construction activity in the fourth quarter, a number of construction indicators were down for 1998 as a whole. In contrast, State construction-related expenditures grew in 1998.

The contracting tax base, a measure of the value of construction put in place, expanded by 1.3 percent from the fourth quarter of 1997 to the fourth quarter of 1998 (Table E-1). However for the year as a whole, the base declined by 1.3 percent. This pattern also held for the value of private building authorizations: Growth of 10.2 percent from the fourth quarter of 1997 to the fourth quarter of 1998, but a decline of 10.6 percent from 1997 as a whole through 1998.

In the City and County of Honolulu, the value of private building authorizations grew by 11.0 percent from the fourth quarter of 1997 to the fourth quarter of 1998 (Table E-6). This growth came from eight apartment buildings by Haseko Homes, a retail store and parking garage by Home Depot, retail construction by Long's Drug and at Kaneohe Ranch, and a large increase in single-family home authorizations in December 1998 over December 1997. For the year as a whole, however, the value of Honolulu private authorizations fell by 19.2 percent, largely reflecting high 1997 levels due to the Nauru Towers and a retirement residence in Hawaii Kai.

On Maui, the value of private authorizations grew by a relatively small 2.9 percent from the fourth quarter of 1997 to the fourth quarter of 1998. For the year as a

whole, authorizations were up 7.1 percent. This largely reflected strong third-quarter growth, coming from Kamehameha school construction, hotel-related construction at Molokai Ranch, multi-family dwellings on Lanai, and hotel renovations and parking structure construction in Lahaina.

Private authorizations on Kauai expanded by 17.2 percent in the fourth quarter of 1998 relative to the year-earlier quarter. Much of this growth was due to a new day care facility in Kapaa and on-going construction by Bali Hai Villas in Princeville. For the year as a whole, private authorizations were down in Kauai County relative to 1997. Some of the decline was due to unusually large hotel construction activity in 1997.

Capital improvement project (CIP) spending by the state government fell by 17.4 percent from the fourth quarter of 1997 to the fourth quarter of 1998 (Table E-8). However, for the year as a whole, CIP expenditures were up by 6.2 percent. General obligation bond expenditures and Special fund expenditures increased particularly quickly in the fourth quarter. These expenditures went primarily for new school construction, but also for highway projects, hospitals, and the purchase of a state office building on Oahu.

Government contracts awarded, a measure of future public construction, grew by a sharp 64.9 percent in the fourth quarter of 1998 relative to the year-earlier growth (Table E-1). Much of this growth was due to awards for a federal detention center on Oahu and for renovation and additions to Hamilton Library at the University of Hawaii at Manoa.

**Table E-1. ESTIMATED VALUE OF COMPLETED CONSTRUCTION,  
NEW PRIVATE BUILDING AUTHORIZATIONS, AND  
GOVERNMENT CONTRACTS AWARDED**

Year	Contracting tax base 1/	Private Building Authorization				Government
		Total Private Authorizations	Residential	Commercial & Industrial 2/	Additions & Alterations	Contracts Awarded
In Millions of Dollars						
1982	1,294.9	683.1	299.2	242.9	141.1	391.6
1983	1,353.4	685.2	296.2	203.2	185.9	275.0
1984	1,242.9	581.5	327.7	104.0	149.9	388.7
1985	1,367.7	888.4	500.1	208.8	180.1	248.9
1986	1,808.0	1,025.2	455.5	267.4	302.3	422.7
1987	2,003.1	1,161.9	507.0	344.4	310.5	370.9
1988	2,487.6	1,546.5	689.2	541.2	316.1	665.0
1989	3,112.8	1,882.4	910.7	561.8	409.9	725.2
1990	4,003.7	2,101.8	952.3	698.0	451.5	825.5
1991	4,334.1	2,151.8	1,192.0	556.2	403.7	729.4
1992	4,012.7	1,751.9	811.1	532.3	408.5	1,159.1
1993	3,803.6	1,496.5	734.7	306.3	455.5	651.8
1994	3,322.3	1,612.9	849.3	370.3	393.4	693.0
1995	3,133.5	1,531.3	745.5	368.3	417.5	490.2
1996	3,285.1	1,117.8	487.0	252.8	378.0	885.5
1997	2,944.4	1,179.2	542.5	264.5	372.2	615.6
1998	2,906.2	1,054.3	485.5	205.6	363.2	685.5
1997 1 Qtr.	685.9	259.0	88.4	72.8	97.8	181.8
2 Qtr.	777.1	426.2	220.8	93.6	111.8	121.6
3 Qtr.	734.1	266.0	132.9	46.8	86.4	200.9
4 Qtr.	747.3	228.1	100.5	51.4	76.3	111.3
1998 1 Qtr.	722.0	260.5	118.2	50.4	91.9	155.3
2 Qtr.	656.7	246.7	121.3	48.5	76.9	127.5
3 Qtr.	770.9	295.9	123.5	55.1	117.3	218.7
4 Qtr.	756.7	251.3	122.6	51.7	77.0	183.5

First Hawaiian Bank has discontinued compiling Government Contracts Awarded. Hawaii State Department of Business, Economic Development & Tourism has compiled preliminary estimates for fourth quarter 1997 and all four quarters and 1998 based on data in *Building Industry*.

1/ Formerly, this category was "Value of Construction Completed".

2/ Includes hotels.

Source: Hawaii State Department of Taxation; F. W. Dodge; county building departments; First Hawaiian Bank; *Building Industry* (various issues) and tabulations by Hawaii State Department of Business, Economic Development & Tourism.

**Table E-1. ESTIMATED VALUE OF COMPLETED CONSTRUCTION,  
NEW PRIVATE BUILDING AUTHORIZATIONS, AND  
GOVERNMENT CONTRACTS AWARDED - Con.**

Year	Contracting tax base 1/	Private Building Authorization				Government
		Total Private Authorizations	Residential	Commercial & Industrial 2/	Additions & Alterations	Contracts Awarded
Percentage Change from the Same Period in Previous Year						
1982	-19.8	-14.8	-24.9	0.9	-13.4	-8.8
1983	4.5	0.3	-1.0	-16.3	31.8	-29.8
1984	-8.2	-15.1	10.6	-48.8	-19.4	41.3
1985	10.0	52.8	52.6	100.8	20.1	-36.0
1986	32.2	15.4	-8.9	28.1	67.9	69.8
1987	10.8	13.3	11.3	28.8	2.7	-12.3
1988	24.2	33.1	35.9	57.1	1.8	79.3
1989	25.1	21.7	32.1	3.8	29.7	9.1
1990	28.6	11.7	4.6	24.2	10.1	13.8
1991	8.3	2.4	25.2	-20.3	-10.6	-11.6
1992	-7.4	-18.6	-32.0	-4.3	1.2	58.9
1993	-5.2	-14.6	-9.4	-42.5	11.5	-43.8
1994	-12.7	7.8	15.6	20.9	-13.6	6.3
1995	-5.7	-5.1	-12.2	-0.5	6.1	-29.3
1996	4.8	-27.0	-34.7	-31.4	-9.5	80.6
1997	-10.4	5.5	11.4	4.6	-1.5	-30.5
1998	-1.3	-10.6	-10.5	-22.2	-2.4	11.3
1997 1 Qtr.	-16.8	-7.7	-25.3	-7.3	16.8	-43.1
2 Qtr.	-4.6	58.7	122.5	49.8	5.0	55.9
3 Qtr.	-12.5	-24.5	-25.3	-27.7	-21.4	-37.9
4 Qtr.	-7.5	5.2	10.1	8.7	-5.8	-32.3
1998 1 Qtr.	5.3	5.7	33.7	-30.8	-5.9	-14.6
2 Qtr.	-15.5	-42.0	-45.1	-48.2	-30.9	4.8
3 Qtr.	5.0	11.2	-7.1	17.7	35.8	8.9
4 Qtr.	1.3	10.2	22.0	0.6	0.9	64.9

First Hawaiian Bank has discontinued compiling Government Contracts Awarded. Hawaii State Department of Business, Economic Development & Tourism has compiled preliminary estimates for fourth quarter 1997 and all four quarters of 1998 based on data in Building Industry.

1/ Formerly, this category was "Value of Construction Completed".

2/ Includes hotels.

Source: Hawaii State Department of Taxation; F. W. Dodge; county building departments; First Hawaiian Bank;

**Table E-2. SINGLE FAMILY UNITS AUTHORIZED**

<i>Year</i>	<i>First Quarter</i>	<i>Second Quarter</i>	<i>Third Quarter</i>	<i>Fourth Quarter</i>	<i>Annual</i>
Number of Units					
1982	472	536	626	651	2,285
1983	896	952	862	707	3,417
1984	1,092	1,324	1,115	911	4,442
1985	802	1,236	1,644	1,269	4,951
1986	925	1,226	1,354	1,195	4,700
1987	1,523	1,639	1,429	1,475	6,066
1988	1,323	1,767	2,096	1,114	6,290
1989	1,474	1,620	1,993	1,777	6,858
1990	1,922	1,476	1,132	1,472	6,002
1991	1,094	1,010	1,303	1,419	4,826
1992	1,317	1,058	1,388	816	4,576
1993	1,147	1,311	1,064	1,228	4,750
1994	961	963	1,426	1,226	4,576
1995	796	1,138	1,180	778	3,892
1996	756	630	880	540	2,806
1997	533	757	784	628	2,702
1998	679	742	748	785	2,954
Percentage Change from the Same Period in Previous Year					
1982	-39.1	-23.1	-1.9	20.8	-13.7
1983	89.8	77.6	37.7	8.6	49.5
1984	21.9	39.1	29.4	28.9	30.0
1985	-26.6	-6.6	47.4	39.3	11.5
1986	15.3	-0.8	-17.6	-5.8	-5.1
1987	64.6	33.7	5.5	23.4	29.1
1988	-13.1	7.8	46.7	-24.5	3.7
1989	11.4	-8.3	-4.9	59.5	9.0
1990	30.4	-8.9	-43.2	-17.2	-12.5
1991	-43.1	-31.6	15.1	-3.6	-19.6
1992	20.4	4.8	6.5	-42.5	-5.2
1993	-12.9	23.9	-23.3	50.5	3.8
1994	-16.2	-26.5	34.0	-0.2	-3.7
1995	-17.2	18.2	-17.3	-36.5	-14.9
1996	-5.0	-44.6	-25.4	-30.6	-27.9
1997	-29.5	20.2	-10.9	16.3	-3.7
1998	27.4	-2.0	-4.6	25.0	9.3

Source: F. W. Dodge and county building departments.

**Table E-3. MULTI-FAMILY UNITS AUTHORIZED**

<i>Year</i>	<i>First Quarter</i>	<i>Second Quarter</i>	<i>Third Quarter</i>	<i>Fourth Quarter</i>	<i>Annual</i>
Number of Units					
1982	313	182	1,831	2,268	4,594
1983	11	158	1,058	104	1,331
1984	61	331	134	495	1,021
1985	1,151	696	291	312	2,450
1986	1,247	299	509	424	2,479
1987	488	567	99	305	1,459
1988	428	702	528	935	2,593
1989	309	1,501	664	457	2,931
1990	495	690	349	1,138	2,672
1991	2,330	973	764	736	4,803
1992	520	484	1,219	517	2,740
1993	272	556	1,120	476	2,424
1994	427	974	630	774	2,805
1995	1,290	290	874	192	2,646
1996	220	108	469	312	1,109
1997	97	655	152	204	1,108
1998	129	46	155	72	402
Percentage Change from the Same Period in Previous Year					
1982	-57.8	-90.3	347.7	1,889.5	46.2
1983	-96.5	-13.2	-42.2	-95.4	-71.0
1984	454.5	109.5	-87.3	376.0	-23.3
1985	1,786.9	110.3	117.2	-37.0	140.0
1986	8.3	-57.0	74.9	35.9	1.2
1987	-60.9	89.6	-80.6	-28.1	-41.1
1988	-12.3	23.8	433.3	206.6	77.7
1989	-27.8	113.8	25.8	-51.1	13.0
1990	60.2	-54.0	-47.4	149.0	-8.8
1991	370.7	41.0	118.9	-35.3	79.8
1992	-77.7	-50.3	59.6	-29.8	-43.0
1993	-47.7	14.9	-8.1	-7.9	-11.5
1994	57.0	75.2	-43.8	62.6	15.7
1995	202.1	-70.2	38.7	-75.2	-5.7
1996	-82.9	-62.8	-46.3	62.5	-58.1
1997	-55.9	506.5	-67.6	-34.6	-0.1
1998	33.0	-93.0	2.0	-64.7	-63.7

Source: F. W. Dodge; county building departments.

**Table E-4. HONOLULU CONSTRUCTION COST INDEX:  
SINGLE FAMILY RESIDENCE**

<i>Year</i>	<i>First Quarter</i>	<i>Second Quarter</i>	<i>Third Quarter</i>	<i>Fourth Quarter</i>	<i>Annual</i>
Index Numbers January 1992 = 100					
1982	65.4	64.5	65.0	66.3	65.3
1983	69.6	71.0	72.4	73.1	71.5
1984	74.7	74.3	74.5	75.0	74.6
1985	76.1	75.7	77.6	77.2	76.6
1986	78.5	78.1	79.1	81.5	79.3
1987	80.9	81.3	82.5	83.6	82.1
1988	86.7	85.4	86.6	88.0	86.7
1989	89.5	90.5	90.3	91.5	90.5
1990	91.6	92.5	97.3	99.0	95.1
1991	98.6	97.7	98.3	99.1	98.4
1992	101.5	102.7	103.1	103.3	102.7
1993	108.2	114.9	112.2	110.6	111.5
1994	118.4	124.3	121.6	120.5	121.2
1995	117.6	117.8	118.3	119.3	118.2
1996	120.7	122.5	129.3	129.6	125.5
1997	128.1	129.2	130.2	129.7	129.3
1998	(NA)	(NA)	(NA)	(NA)	(NA)
Percentage Change from the Same Period in Previous Year					
1982	6.2	5.2	3.3	3.8	4.6
1983	6.4	10.1	11.4	10.3	9.5
1984	7.3	4.6	2.9	2.6	4.3
1985	1.9	1.9	4.2	2.9	2.7
1986	3.2	3.2	1.9	5.6	3.5
1987	3.1	4.1	4.3	2.6	3.5
1988	7.2	5.0	5.0	5.3	5.6
1989	3.2	6.0	4.3	4.0	4.4
1990	2.3	2.2	7.8	8.2	5.1
1991	7.6	5.6	1.0	0.1	3.5
1992	2.9	5.1	4.9	4.2	4.4
1993	6.6	11.9	8.8	7.1	8.6
1994	9.4	8.2	8.4	9.0	8.7
1995	-0.7	-5.2	-2.7	-1.0	-2.4
1996	2.7	4.0	9.3	8.7	6.1
1997	6.1	5.4	0.7	0.1	3.0
1998	(NA)	(NA)	(NA)	(NA)	(NA)

NA Not Available.

First Hawaiian Bank has discontinued the update of this index. The Hawaii State Department of Business, Economic Development & Tourism has compiled preliminary 1997 fourth quarter and 1997 annual average and is reviewing the index with the expectation of continuing it.

Source: First Hawaiian Bank and Hawaii State Department of Business, Economic Development & Tourism.

**Table E-5. HONOLULU CONSTRUCTION COST INDEX:  
HIGH-RISE BUILDING**

<i>Year</i>	<i>First Quarter</i>	<i>Second Quarter</i>	<i>Third Quarter</i>	<i>Fourth Quarter</i>	<i>Annual</i>
Index Numbers January 1992 = 100					
1982	67.0	66.1	66.7	68.6	67.1
1983	71.4	71.0	71.7	72.7	71.7
1984	75.0	73.9	74.1	74.6	74.4
1985	76.2	75.0	76.7	76.8	76.2
1986	78.5	77.4	78.1	79.5	78.4
1987	80.3	81.0	81.3	81.3	81.0
1988	84.7	83.4	84.3	86.0	84.6
1989	88.1	89.1	89.2	91.0	89.4
1990	90.8	92.0	98.5	100.2	95.4
1991	99.6	98.7	99.6	99.0	99.2
1992	99.7	98.5	99.6	100.0	99.4
1993	102.7	103.3	104.0	105.8	103.9
1994	107.7	109.1	109.6	113.2	109.9
1995	113.5	113.5	114.2	115.3	114.1
1996	115.8	116.0	117.4	118.3	116.9
1997	118.3	119.8	119.8	119.3	119.3
1998	(NA)	(NA)	(NA)	(NA)	(NA)
Percentage Change from the Same Period in Previous Year					
1982	9.7	6.8	5.9	6.0	7.0
1983	6.6	7.4	7.5	6.0	6.9
1984	5.0	4.1	3.3	2.6	3.8
1985	1.6	1.5	3.5	2.9	2.4
1986	3.0	3.2	1.8	3.5	2.9
1987	2.3	4.7	4.1	2.3	3.3
1988	5.5	3.0	3.7	5.8	4.4
1989	4.0	6.8	5.8	5.8	5.7
1990	3.1	3.3	10.4	10.1	6.7
1991	9.7	7.3	1.1	-1.2	4.0
1992	0.1	-0.2	0.0	1.0	0.2
1993	3.0	4.9	4.4	5.8	4.5
1994	4.9	5.6	5.4	7.0	5.8
1995	5.4	4.1	4.2	1.8	3.9
1996	2.0	2.1	2.7	2.6	2.4
1997	2.1	3.3	2.1	0.8	2.1
1998	(NA)	(NA)	(NA)	(NA)	(NA)

NA Not Available.

First Hawaiian Bank has discontinued the update of this index. The Hawaii State Department of Business Economic Development & Tourism has compiled preliminary 1997 fourth quarter and 1997 annual average and is reviewing the index with the expectation of continuing it.

Source: First Hawaiian Bank and Hawaii State Department of Business, Economic Development & Tourism.

**Table E-6. ESTIMATED VALUE OF PRIVATE BUILDING  
CONSTRUCTION AUTHORIZATIONS, BY COUNTY**

<i>Year</i>	<i>State</i>	<i>City &amp; County of Honolulu</i>	<i>Hawaii County</i>	<i>Kauai County</i>	<i>Maui County</i>
In Thousands of Dollars					
1982	683,124	473,009	75,175	44,237	90,703
1983	685,205	366,828	86,653	140,456	91,269
1984	581,497	378,299	90,349	53,010	59,839
1985	888,436	524,823	121,345	63,889	178,933
1986	1,025,195	546,375	231,404	93,199	154,120
1987	1,161,897	749,472	145,157	103,481	163,786
1988	1,546,474	743,056	181,228	213,678	408,508
1989	1,882,397	1,047,747	338,060	178,689	317,364
1990	2,101,767	998,921	429,964	238,968	433,916
1991	2,151,849	1,462,676	369,454	118,547	201,174
1992	1,751,871	1,060,700	379,158	111,098	200,916
1993	1,496,483	959,043	248,239	86,010	203,179
1994	1,612,899	1,073,264	181,059	164,681	193,894
1995	1,531,317	980,757	267,108	78,918	204,588
1996	1,117,760	698,697	171,017	101,981	146,065
1997	1,178,535	772,825	155,776	97,161	152,773
1998	1,054,281	624,227	178,220	88,196	163,640
1996 1 Qtr.	280,480	193,018	27,283	23,487	36,691
2 Qtr.	268,220	146,189	65,975	23,486	32,570
3 Qtr.	352,321	228,620	36,385	39,484	47,833
4 Qtr.	216,740	130,871	41,375	15,523	28,971
1997 1 Qtr.	258,945	161,998	46,425	18,804	31,718
2 Qtr.	425,581	304,938	37,857	39,815	42,972
3 Qtr.	265,963	172,276	35,952	17,637	40,098
4 Qtr.	228,046	133,613	35,543	20,905	37,985
1998 1 Qtr.	260,420	162,674	52,080	19,545	26,121
2 Qtr.	246,651	137,077	46,215	21,988	41,371
3 Qtr.	295,956	176,140	40,589	22,169	57,058
4 Qtr.	251,256	148,336	39,335	24,494	39,090

Source: F. W. Dodge; county building departments.



**Table E-6. ESTIMATED VALUE OF PRIVATE BUILDING CONSTRUCTION AUTHORIZATIONS, BY COUNTY - Con.**

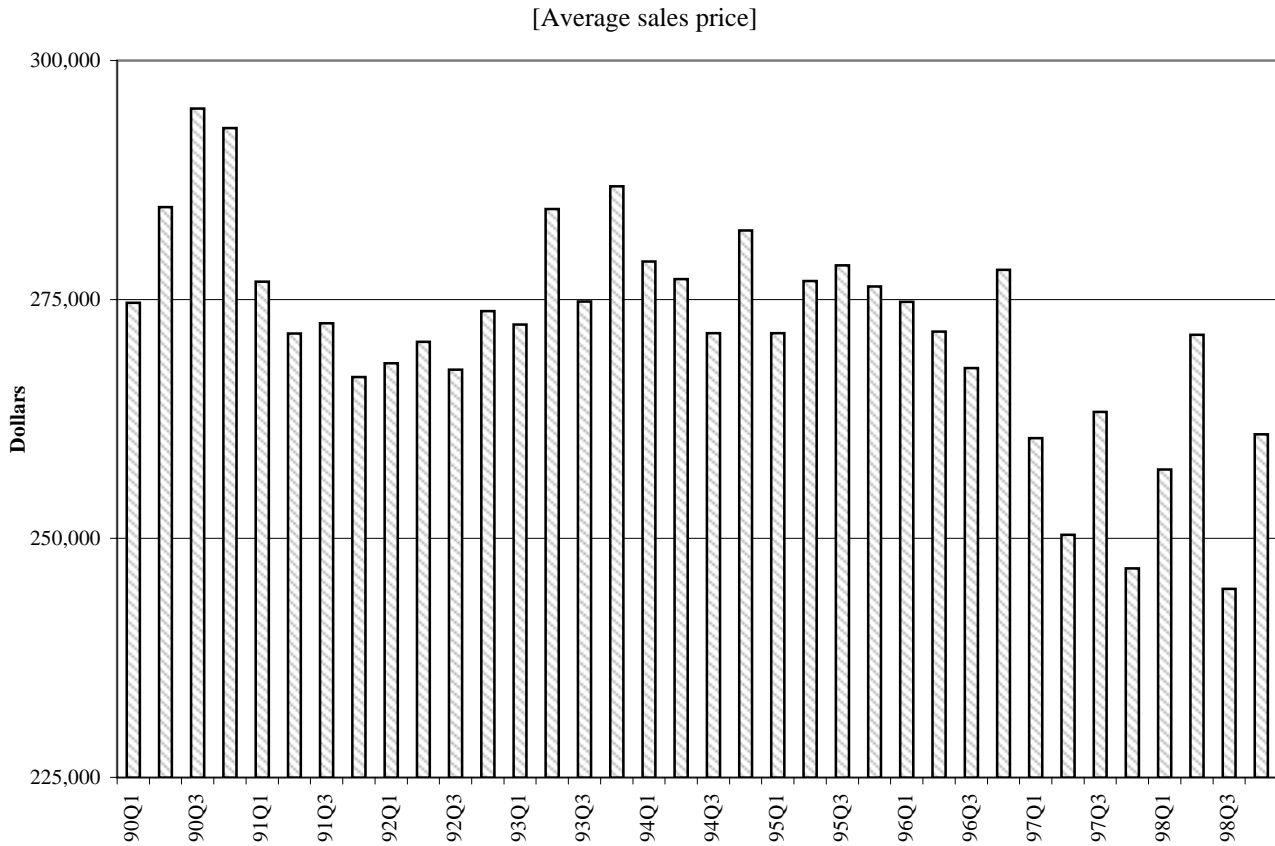
<i>Year</i>	<i>State</i>	<i>City &amp; County of Honolulu</i>	<i>Hawaii County</i>	<i>Kauai County</i>	<i>Maui County</i>
Percentage Change From The Same Period in Previous Year					
1982	-14.8	4.2	-44.9	-34.6	-36.9
1983	0.3	-22.4	15.3	217.5	0.6
1984	-15.1	3.1	4.3	-62.3	-34.4
1985	52.8	38.7	34.3	20.5	199.0
1986	15.4	4.1	90.7	45.9	-13.9
1987	13.3	37.2	-37.3	11.0	6.3
1988	33.1	-0.9	24.8	106.5	149.4
1989	21.7	41.0	86.5	-16.4	-22.3
1990	11.7	-4.7	27.2	33.7	36.7
1991	2.4	46.4	-14.1	-50.4	-53.6
1992	-18.6	-27.5	2.6	-6.3	-0.1
1993	-14.6	-9.6	-34.5	-22.6	1.1
1994	7.8	11.9	-27.1	91.5	-4.6
1995	-5.1	-8.6	47.5	-52.1	5.5
1996	-27.0	-28.8	-36.0	29.2	-28.6
1997	5.4	10.6	-8.8	-4.1	4.6
1998	-10.5	-19.2	14.4	-9.2	7.1
1996 1 Qtr.	-33.6	-29.1	-73.1	82.7	2.3
2 Qtr.	-43.6	-46.4	-1.2	1.0	-71.1
3 Qtr.	-7.3	-19.8	-16.7	103.0	49.9
4 Qtr.	-14.9	-13.1	-25.0	-37.2	20.5
1997 1 Qtr.	-7.7	-16.1	70.2	-19.9	-13.6
2 Qtr.	58.7	108.6	-42.6	69.5	31.9
3 Qtr.	-24.5	-24.6	-1.2	-55.3	-16.2
4 Qtr.	5.2	2.1	-14.1	34.7	31.1
1998 1 Qtr.	0.6	0.4	12.2	3.9	-17.6
2 Qtr.	-42.0	-55.0	22.1	-44.8	-3.7
3 Qtr.	11.3	2.2	12.9	25.7	42.3
4 Qtr.	10.2	11.0	10.7	17.2	2.9

**Table E-7. HAWAII STATE RESIDENTIAL SALES:  
SINGLE FAMILY AND CONDOMINIUMS**

<i>Year</i>	<i>First Quarter</i>	<i>Second Quarter</i>	<i>Third Quarter</i>	<i>Fourth Quarter</i>	<i>Annual</i>
<b>Average Sale Price (Dollars)</b>					
1982	126,808	132,684	131,425	134,586	131,534
1983	134,829	135,264	133,665	132,931	134,102
1984	136,598	136,706	137,089	137,520	136,961
1985	131,194	127,456	135,508	136,719	132,956
1986	136,569	147,879	148,164	150,049	146,700
1987	159,934	174,214	179,845	178,903	174,548
1988	205,466	181,398	180,803	186,972	187,787
1989	198,950	212,823	229,452	265,751	228,295
1990	274,648	284,651	294,991	292,948	285,970
1991	276,848	271,450	272,512	266,902	271,590
1992	268,314	270,579	267,643	273,769	270,060
1993	272,375	284,466	274,780	286,834	280,115
1994	278,958	277,147	271,479	282,229	277,258
1995	271,477	276,916	278,564	276,373	276,029
1996	274,764	271,649	267,808	278,103	272,967
1997	260,492	250,382	263,235	246,851	254,901
1998	257,215	271,298	244,729	260,893	258,432
<b>Percentage Change from the Same Period in Previous Year</b>					
1982	-6.8	-6.1	-8.5	-6.6	-6.7
1983	6.3	1.9	1.7	-1.2	2.0
1984	1.3	1.1	2.6	3.5	2.1
1985	-4.0	-6.8	-1.2	-0.6	-2.9
1986	4.1	16.0	9.3	9.7	10.3
1987	17.1	17.8	21.4	19.2	19.0
1988	28.5	4.1	0.5	4.5	7.6
1989	-3.2	17.3	26.9	42.1	21.6
1990	38.0	33.8	28.6	10.2	25.3
1991	0.8	-4.6	-7.6	-8.9	-5.0
1992	-3.1	-0.3	-1.8	2.6	-0.6
1993	1.5	5.1	2.7	4.8	3.7
1994	2.4	-2.6	-1.2	-1.6	-1.0
1995	-2.7	-0.1	2.6	-2.1	-0.4
1996	1.2	-1.9	-3.9	0.6	-1.1
1997	-5.2	-7.8	-1.7	-11.2	-6.6
1998	-1.3	8.4	-7.0	5.7	1.4

Source: Prudential-Locations Research Department.

**Figure 4. Hawaii State Residential Sales: Single Family and Condominiums**



Source: Table E-7. Hawaii State Residential Sales: Single Family and Condominiums

**Table E-8. STATE GOVERNMENT CAPITAL IMPROVEMENT  
PROJECT EXPENDITURES**

<i>Year</i>	<i>Total Expenditures</i>	<i>General Obligation Bond 1/</i>	<i>Revenue Bond 2/</i>	<i>General Fund (Cash)</i>	<i>Special Fund</i>	<i>Federal Funds 3/</i>
<b>In Thousands of Dollars</b>						
1990	995,163	248,379	368,502	133,529	79,998	164,755
1991	1,027,189	210,022	326,414	121,108	164,915	204,730
1992	1,323,450	331,720	512,432	138,867	124,605	215,826
1993	1,188,315	472,515	225,431	89,917	147,351	253,101
1994	1,214,487	492,048	327,980	56,662	135,440	202,357
1995	822,327	342,423	77,560	19,672	169,901	212,772
1996	720,580	286,472	66,625	6,719	165,426	195,338
1997	898,496	345,440	220,496	3,181	163,130	166,249
1998	953,883	388,127	201,895	2,215	246,735	114,911
1996 1 Qtr.	137,754	38,512	27,497	1,592	30,358	39,794
2 Qtr.	245,839	133,694	16,626	2,480	40,695	52,345
3 Qtr.	176,195	54,642	10,163	1,915	54,990	54,485
4 Qtr.	160,792	59,625	12,339	732	39,382	48,714
1997 1 Qtr.	212,152	115,239	14,839	1,006	35,590	45,477
2 Qtr.	274,738	161,702	19,047	939	40,334	52,717
3 Qtr.	125,971	34,096	9,137	648	49,823	32,267
4 Qtr.	285,636	34,404	177,473	588	37,383	35,788
1998 1 Qtr.	125,076	38,848	8,770	670	47,507	29,281
2 Qtr.	457,268	198,419	181,727	684	49,729	26,709
3 Qtr.	135,702	58,909	2,600	252	54,338	19,602
4 Qtr.	235,837	91,951	8,797	609	95,161	39,319
<b>Percent change from corresponding period in previous year</b>						
1990	(NA)	17.9	190.0	(NA)	(NA)	(NA)
1991	3.2	-15.4	-11.4	-9.3	106.1	24.3
1992	28.8	57.9	57.0	14.7	-24.4	5.4
1993	-10.2	42.4	-56.0	-35.2	18.3	17.3
1994	2.2	4.1	45.5	-37.0	-8.1	-20.0
1995	-32.3	-30.4	-76.4	-65.3	25.4	5.1
1996	-12.4	-16.3	-14.1	-65.8	-2.6	-8.2
1997	24.7	20.6	231.0	-52.7	-1.4	-14.9
1998	6.2	12.4	-8.4	-30.4	51.3	-30.9
1996 1 Qtr.	-21.2	-41.0	139.8	-73.6	-28.5	-19.9
2 Qtr.	-15.9	-20.1	-4.5	-58.9	6.6	-17.4
3 Qtr.	5.2	11.1	-38.9	-55.3	17.7	7.4
4 Qtr.	-14.2	-1.5	-61.5	-78.0	-7.5	-0.5
1997 1 Qtr.	54.0	199.2	-46.0	-36.8	17.2	14.3
2 Qtr.	11.8	20.9	14.6	-62.1	-0.9	0.7
3 Qtr.	-28.5	-37.6	-10.1	-66.1	-9.4	-40.8
4 Qtr.	77.6	-42.3	1,338.4	-19.7	-5.1	-26.5
1998 1 Qtr.	-41.0	-66.3	-40.9	-33.4	33.5	-35.6
2 Qtr.	66.4	22.7	854.1	-27.2	23.3	-49.3
3 Qtr.	7.7	72.8	-71.5	-61.2	9.1	-39.2
4 Qtr.	-17.4	167.3	-95.0	3.6	154.6	9.9

NA Not available.

This table is not directly comparable to Contracts Awarded data in Table E-1.

1/ Consists of general obligation bonds and reimbursable general obligation bonds.

2/ Consists of revenue bonds and special purpose revenue bonds.

3/ Includes special federal aid: interstate, primary, secondary; and federal funds.

Source: Hawaii State Department of Accounting and General Services, Report 300s.

## F. OTHER INDICATORS

This issue of the *Quarterly Statistical and Economic Report* inaugurates a new section. Over time the Research and Economic Analysis Division tracks new indicators of the economy. In order to assure a place for indicators that do not easily fit within our existing categories, we established this “Other Indicators” section. In this issue, the section contains a table on bankruptcy filings in Hawaii. We expect to add more tables as time and resources permit.

From the fourth quarter of 1997 to the fourth quarter of 1998, total bankruptcy filings grew by 24.9 percent (Table F-1). Most of the increase was due to a 28.2 percent growth in Chapter 7 filings. Chapter 7 is the most common form of bankruptcy filing, involving liquidation of a debtor’s assets (subject to exceptions) to satisfy debts. Debts in excess of assets are often “forgiven” in this type of filing. Businesses that wish to liquidate their assets and terminate business may also file under Chapter 7.

Chapter 11 and Chapter 13 filings involve establishing a repayment plan with creditors. Chapter 11 is generally for corporate use (corporations may also file under Chapter 7), while Chapter 13 is for individuals. There is also a Chapter 12 filing for family farms, but this is rarely used in Hawaii.

There are relatively few Chapter 11 (corporate repayment) filings. Indeed, for 1998 as a whole, Chapter 11 filings in Hawaii declined by 46 percent from 50 to 27.

Some individuals in Hawaii file for bankruptcy under chapter 13, but these filings also form a very small share of the total. There was a slight decline in Chapter 13 filings from the fourth quarter of 1997 to the fourth quarter of 1998. For the year as a whole, Chapter 13 filings grew by 14.6 percent.

While total bankruptcy filings are still growing, the rate of growth has declined in recent years. In 1996, total filings grew by a large 52.5 percent. While the growth rate has remained high, it was “only” 30.6 percent from 1997 to 1998.

Bankruptcies have also been growing on the Mainland, though at a lower rate. Over the federal fiscal year (October 1 to September 30) from 1995 to 1997, national bankruptcies grew at about 24 percent per year. However for fiscal year 1998, total bankruptcy growth fell to 5.1 percent nationally.

Additional information may be found at the American Bankruptcy Institute “Bankruptcy Chapters” website <http://www.abiworld.org/media/chapters.html>

**Table F-1. BANKRUPTCY FILINGS**

<i>Year</i>	<i>First Quarter</i>	<i>Second Quarter</i>	<i>Third Quarter</i>	<i>Fourth Quarter</i>	<i>Annual</i>
Chapter 7					
1994	336	357	373	362	1,428
1995	414	454	440	534	1,842
1996	530	678	734	829	2,771
1997	863	996	1,004	1,087	3,950
1998	1,122	1,343	1,408	1,393	5,266
Chapter 11					
1994	12	19	9	18	58
1995	6	10	10	10	36
1996	12	18	14	8	52
1997	16	11	15	8	50
1998	7	8	4	8	27
Chapter 13					
1994	24	23	31	21	99
1995	33	25	39	44	141
1996	51	63	62	84	260
1997	110	108	105	129	452
1998	141	133	116	128	518
Total (Chapters 7, 11, 12, 13)					
1994	373	400	413	401	1,587
1995	453	489	492	588	2,022
1996	593	759	810	921	3,083
1997	989	1,115	1,124	1,224	4,452
1998	1,271	1,485	1,528	1,529	5,813

Source: U.S. Bankruptcy Court for the District of Hawaii.

**Table F-1. BANKRUPTCY FILINGS - Con.**  
 [percentage change from the same period in previous year]

<i>Year</i>	<i>First Quarter</i>	<i>Second Quarter</i>	<i>Third Quarter</i>	<i>Fourth Quarter</i>	<i>Annual</i>
<b>Chapter 7</b>					
1995	23.2	27.2	18.0	47.5	29.2
1996	28.0	49.3	66.8	55.2	50.4
1997	62.8	46.9	36.8	31.4	42.6
1998	30.0	34.8	40.2	28.2	33.3
<b>Chapter 11</b>					
1995	-50.0	-47.4	11.1	-44.4	-37.9
1996	100.0	80.0	40.0	-20.0	44.4
1997	33.3	-38.9	7.1	0.0	-3.8
1998	-56.3	-27.3	-73.3	0.0	-46.0
<b>Chapter 13</b>					
1995	37.5	8.7	25.8	109.5	42.4
1996	54.5	152.0	59.0	90.9	84.4
1997	115.7	71.4	69.4	53.6	73.8
1998	28.2	23.2	10.5	-0.8	14.6
<b>Total (Chapters 7, 11, 12, 13)</b>					
1995	21.5	22.3	19.1	46.6	27.4
1996	30.9	55.2	64.6	56.6	52.5
1997	66.8	46.9	38.8	33.1	44.5
1998	28.5	33.2	35.9	24.9	30.6

Source: U.S. Bankruptcy Court for the District of Hawaii.

### III. TERMS AND DEFINITIONS

**Agriculture Wage and Salary Jobs** – Full- and part-time jobs for which payment was made by the employer in the survey week containing the 12th of the month. Includes farm jobs and machinery operators. Closely related management and services jobs are included for sugar and pineapple but are excluded for other types of agriculture.

**Average Daily Visitor Census** – Average number of visitors present daily in the state. Figures are computed monthly by the Hawaii Visitors and Convention Bureau, based on arrival and departure dates from in-flight questionnaires.

**Average Length of Stay** – Number of days in the State including the day of arrival and the day of departure.

#### **Bankruptcy Filings –**

**Chapter 7** – Is available to both individuals and business debtors. Its purpose is to achieve a fair distribution to creditors of whatever non-exempt property the debtor has and to give the individual debtor a fresh start through the discharge in bankruptcy.

**Chapter 11** – Is available for both consumer and business debtors. Its purpose is to rehabilitate a business as a going concern or reorganize an individual's finances through a court-approved reorganization plan.

**Chapter 12** – Is designed to give special debt relief to a family farmer with regular income from farming.

**Chapter 13** – Is available for an individual with regular income whose debts do not exceed specific amounts, typically used to budget some of the debtor's future earnings under a plan through which creditors are paid in whole or in part.

**Additional information** may be found at the American Bankruptcy Institute "Bankruptcy Chapters" website <http://www.abiworld.org/media/chapters.html>

**Civilian Employment** – Persons 16 years of age or older who, during the survey week containing the 12th of the month, were either at work for pay or profit, or worked without pay for 15 hours or more on a family farm or business, or were with a job but not at work. Both permanent and temporary employees and those who are working either full- or part-time are included.

**Civilian Labor Force** – Total of employed and unemployed persons, excluding those in the armed forces and 16 years of age or under. U.S. Census Bureau does surveys for the U.S. Bureau of Labor Statistics.

**Civilian Unemployment** – Persons 16 years of age or older who (1) did not work at all during the survey week but were actively seeking work and were available for work; or (2) did not work at all, were available for work, and were waiting to be called back from layoff or were waiting to report to a new wage or salary job within 30 days.

**Consumer Price Index: Honolulu or U.S.** – Measure of the average change in prices over time for a fixed market basket of goods and services. It is compiled by the U.S. Bureau of Labor Statistics. The index measures changes from a reference date, i.e., 1982-84, which is designated as 100.0. For example, a CPI-U (where U refers to All Urban Consumers), All Items of 171.9 as the annual average for 1997 indicates the average prices of that group's basket was 71.9 percent higher than the weighted average of those same goods and services in 1982-84. Data are published monthly for the U.S. and semi-annually for Honolulu. As of January 1998, BLS changed the reference basket based on 1982-84 consumer expenditures to a 1993-95 basket. The base continues to be 1982-84 = 100.0. The BLS Internet site has more information about the CPI at <http://stats.bls.gov/cpihome.htm>.

**Contract Construction Jobs** – Jobs held by any person engaged in construction, repairing, erecting, or improving buildings or structures of any type or description, and any installations therein. Such construction includes not only residential and non-residential building projects, both private and public, but also highway and road construction, street and sidewalk construction, repair, excavations, bridges, docks, and other heavy construction projects.

**Contracting Tax Base** – The total receipts of businesses engaged in contracting to erect, construct, repair, or improve buildings or structures of any kind or description, or to make any installation therein. Attributed to any business engaging in the practice of architecture, engineering, land surveying, landscape architecture, and the practice of pest control or fumigation.

**Dividends, Interest, and Rent** – Personal income received by individuals and on behalf of individuals by quasi-individuals, including non-profit institutions and private trust funds administered by fiduciaries. Dividends are payments in cash or other assets by corporations in the U.S. or abroad to Hawaii residents. Interest consists of monetary interest, on private and government accounts and bonds, and imputed interest, on



pensions and insurance as earned rather than as received. Rent is monetary income as received on real property, royalties, and imputed as value of owner-occupied nonfarm dwellings.

**Earnings** – Is a subtotal of personal income components: wages and salaries, other labor income, and proprietors' income. It is often used in regional analysis as a proxy for the income generated from participation in current production.

**Eastbound Visitors** – Visitors who stayed in Hawaii for at least one night but less than one year (if students, less than six months), from Asia, Australia, and the Pacific. Since the Hawaii Visitors and Convention Bureau does not have a visitor profile encompassing the entire eastbound travel market, this figure is obtained by subtracting the westbound overnight or longer visitors from the total visitor arrivals.

**Federal Government Jobs** – Includes those in the civilian agencies, i.e. Department of Defense, Agriculture, United States Postal Service and the various armed services exchange systems.

**General Excise (Gross Income) Tax** – Tax charged to businesses on gross sales or gross income. The tax rate is 0.5 percent on wholesaling and intermediary services, blind vendors, producing, manufacturing, sugar processing and pineapple canning; all other activities (retailing, business and professional services, contracting, theater, amusement, radio, interest, commissions, rentals) are taxed at 4.0 percent, except insurance commissions to general agents, subagents and solicitors, who are taxed at 0.15 percent.

**General Excise and Use Tax Base** – The value of all goods and services sold, including the value of tangible personal property imported into Hawaii for own use or consumption.. One of the most comprehensive measures of business activity in the state.

**General Fund Tax Revenues** – Receipts of the general excise and use tax, and net individual and corporate income taxes. The general government fund used to account for all financial resources except those required to be accounted for in another fund, such as the highway, airport or capital improvement fund.

**Honolulu Construction Cost Indexes: High-Rise or Single Family** – Compiled by First Hawaiian Bank. These indexes measure changes in contractors' costs for building materials and labor.

**Hotel Jobs** – Jobs in hotels, rooming houses, camps, and other lodging places.

**Hotel Occupancy Rate** – The percentage of occupied rooms in a hotel. Hotel occupancy rates depend not only on the number of visitors and their length of stay, but also on the hotel room inventory, e.g., a large increase in new hotel units results in a drop in occupancy rates, until such time as visitor traffic builds up enough to fill them. Rates are obtained from a sample survey conducted on a monthly basis.

**Initial Agent Claims** – Notices of unemployment filed against another state by its workers who have moved to Hawaii.

**Initial Liable Claims** – Notices of unemployment filed against Hawaii by Hawaii workers who have moved to another state.

**Local Government Jobs** – Includes those in the county governments.

**Manufacturing Jobs** – Jobs in manufacturing industries, or those activities by any person or establishment that buys materials, performs work on such materials, and changes such materials into a finished or semi-finished product. Includes compounding, canning, preserving, packing, printing, publishing, mailing, processing, refining, or preparing for sale, profit, or commercial use, either directly or through the activity of others, in whole or in part, any article, substance, or commodity such as textiles, apparel, printing, publishing, food processing, and durable goods

**Net Earnings** – BEA Personal Income component Earnings less Personal Contributions for Social Insurance. It can be used as a proxy for income before taxes.

**Net Individual or Corporation Income Tax Revenue** – For individuals, it is calculated as declaration of estimated taxes plus payments with returns plus withholding tax on wages less refunds. Net corporate income tax revenue is calculated as declarations of estimated taxes plus payments with returns less refunds.

**Non-Agriculture Wage and Salary Jobs** – Derived monthly from a sample survey of employers reporting the number of persons who received pay for any part of the pay period containing the 12th of the month. Includes all full- and part-time non-agricultural workers, permanent and temporary workers, and workers on paid sick leave and paid vacation.

**Other Goods and Services** – Honolulu Consumer Price Index component detail. Prior to the CPI 1998 Revision, it measured the change in average prices of to-

bacco products, personal care goods and services, and personal and educational expenditures. Beginning with January 1998 data, this category includes tobacco, personal care, and miscellaneous goods and services. Other components, for example, school-books and tuition, moved to the new "Education and Communication" and recreational reading to "Recreation". BLS' *Monthly Labor Review* (December 1996), and BLS' Internet site have more information about the CPI at <http://stats.bls.gov/cpihome.htm>.

**Other Labor Income** – Personal income component that consists of employers' contributions to privately-administered benefit plans, fees paid to corporate directors, and miscellaneous fees.

**Personal Contributions for Social Insurance** – Personal income earned, if not immediately received, by employees and self-employed who participate in various government programs such as social security, Medicare, retirement, and veterans life insurance programs. Contributions are excluded from Personal Income but are included when received as "Transfer Payments".

**Personal Income** – Income received by or on behalf of residents from all sources—participation in production, from government and business transfer payments and from government interest (treated like a transfer payment by the Bureau of Economic Analysis). The major component is wages and salaries.

**Proprietors' Income** – Earnings of unincorporated businesses, (proprietorships, partnerships, and producers' cooperatives), from their current business operations. It includes both farm and non-farm businesses, but excludes capital gains and losses.

**Retail Trade Jobs** – Jobs in those establishments that are engaged in sales of tangible personal property to the customer for use or consumption and not for resale.

**Services Jobs** – Jobs in those activities that are engaged in for other persons for a consideration which involve the rendering of a service as distinguished from the sale of tangible property or the production and sale of tangible property. Includes all professional services.

**State Government Jobs – Education** includes all employees under the Department of Education (DOE) and the University of Hawaii System. This includes public library personnel, substitute teachers who received pay during the pay period including the 12th of the month, and support personnel such as cafeteria workers, classroom cleaners, and school security attendants. Also

included are part-time employees in special programs such as the A+ After School Program.

**State Government Jobs – Non-Education** - Includes all other executive branch departments (i.e. Agriculture, Transportation, etc.), the legislative and judicial branches, and the Research Corporation of the University of Hawaii (RCUH).

**Total Visitor Arrivals** – All persons who stayed in Hawaii for a period between one night and one year (if students, less than six months). Includes westbound arrivals (traveling from North America) and eastbound arrivals (from Asia, Australia, and Oceania).

**Transfer Payments** – As a component of Personal Income, these are payments for which no current services are performed. They are payments by government and business to individual or nonprofit institutions serving individuals. Examples are social security and government employees' retirement.

**Transient Accommodations Tax** – Tax levied on the furnishing of a room, apartment, suite which is customarily occupied by a person or group for fewer than 180 consecutive days by a hotel, apartment, motel, or cooperative apartment, rooming house, or other place in which lodgings are generally furnished to transients. The tax is imposed at the rate of 6 percent.

**Unallocated General Excise & Use Tax Revenues** – General excise and use tax revenues that could not be allocated to specific activities of the general excise & use tax. It also includes collections from penalty and interest, assessments and corrections, delinquent collections, refunds, protested payments, settlements, etc.

**Unemployment Rate** – Ratio of unemployed persons to the civilian labor force expressed as a percentage.

**Use Tax** – Excise tax levied on tangible personal property which is imported or purchased from an unlicensed seller for use in the state. The tax is based upon the purchase price or value of the tangible personal property purchased or imported, whichever is applicable. Rates: 0.5 percent, if for resale at retail; 4.0 percent, if for use or consumption.

**Wages and Salaries** – The major component of Personal Income includes monetary and in-kind compensation for employment services rendered. Examples are commissions, tips, and meals furnished employees.

**Westbound Visitors** – Visitors who stayed in Hawaii for a period between one night and one year (if students,

less than six months), who traveled from North America (Mainland U.S.).

**Wholesale Trade Jobs** – Jobs in those establishments whose sales of tangible personal property is to licensed persons for resale or incorporation into a product or project, and sales to certain leasing companies.