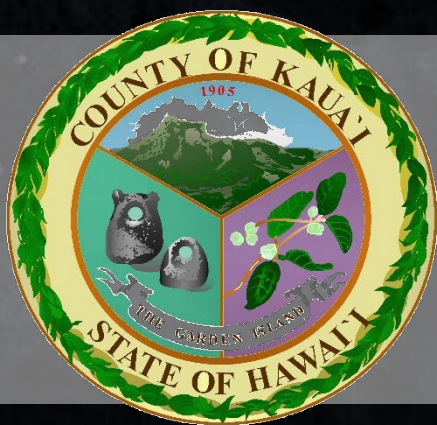


# COASTAL DATA EXCHANGE COMMUNITY AND GENERAL PLANS



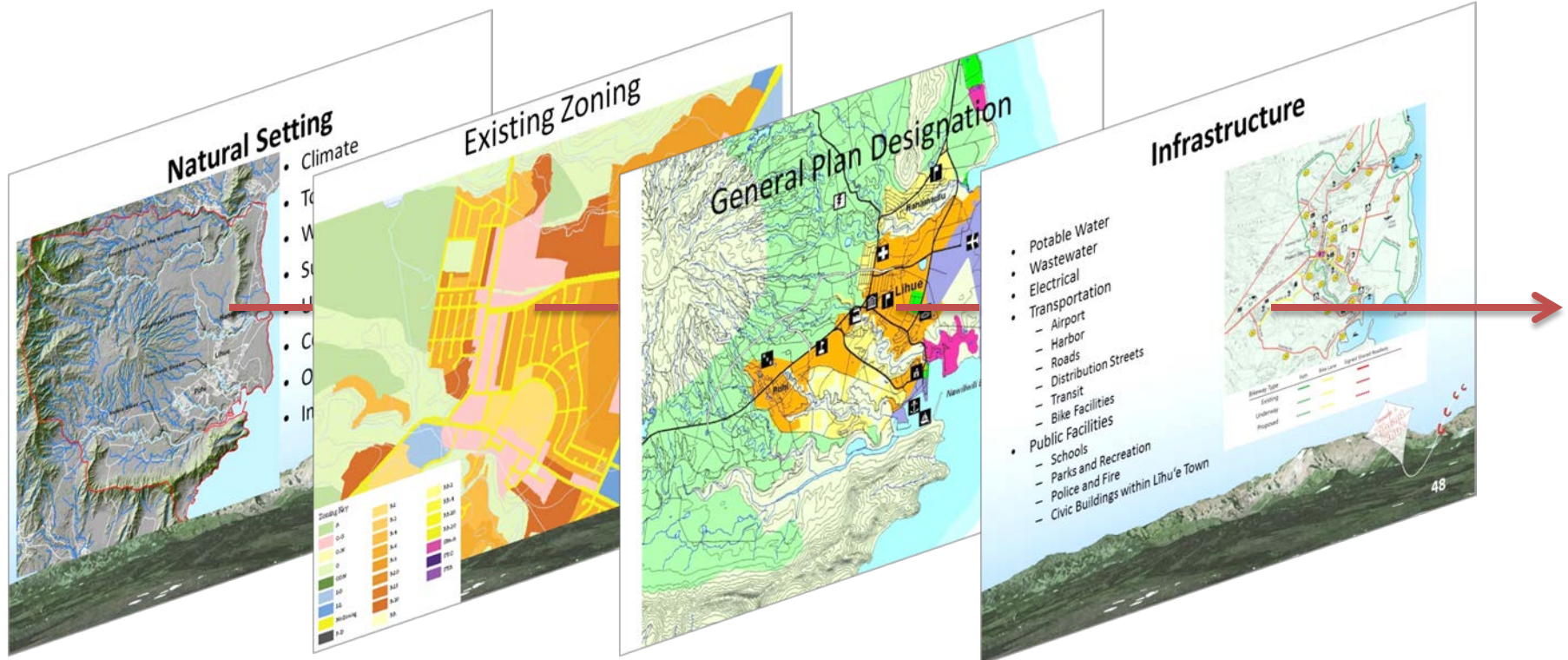
**Lea Kai'aokamālie, Planner & [Unofficial] GIS Analyst**

County of Kaua'i Planning Department  
Community and General Plan Updates

COASTAL HAZARDS DATA EXCHANGE

# My Planning Toolbox

- ✓ **County Community Plans**
- ✓ **County General Plans**
- ✓ **Special Studies (Agriculture, Infrastructure, etc)**





# I use this planning tool to...

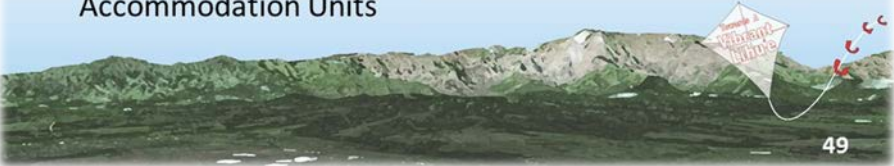
---

- Protect public safety
- Manage growth in a sustainable manner**
- Protect the public trust
- Coordinate decisions
- Provide direction for future decisions**
- (Update standards to) administer regulations pertaining to statute/ code

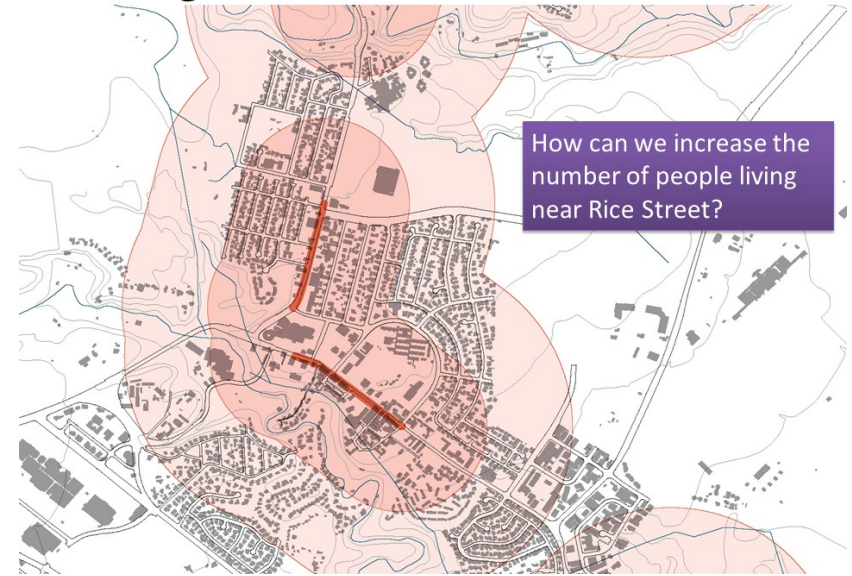


# Social & Economic Community Profiles

- Population
- Households and Housing Units
- Economic Issues and Employment
  - Business Patterns
  - Employment
  - Income
  - Past and Current Industry Trends
- Visitor Arrivals and Visitor Accommodation Units



# Building Residential Base for Commercial



# Streets and Connectivity



# Access to Parks



## We're lucky to have:

---

- All kinds of data layers
- **For General Plan and Community Plans:**
  - Natural/constraints
  - Infrastructure
  - Zoning, General plan, State Land Use... etc
- For IAL (mahalo DURP)
  - IAL criteria layers (all eight and aggregate)
  - Food and energy self-sufficiency data

## I so wish we had:

---

- A way to update TMK so that it ties into historic data for properties
- Updated constraints layers
- Updated infrastructure data
- Updated and sharable archaeology data
- Data on private systems
- Agricultural production (acreage, use, etc)
- Water – diversions 😊
- Pictometry mosaic that can be added to GIS without frying our network
- GIS and database-focused staff!





# MAHALO NUI LOA!

---

**To everyone who creates and updates data, especially with good metadata!!**

