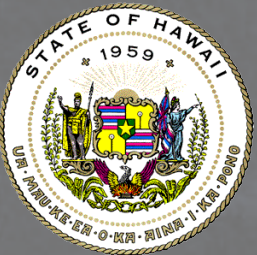


COASTAL DATA EXCHANGE

HOSTED BY
DBEDT, OFFICE OF PLANNING
MAY 30TH AT EAST WEST CENTER

DOT HARBORS MASTER PLANS

Dean Watase & Steve Dale, Senior Planners
Department of Transportation, Harbors Division
Engineering Branch, Planning Section

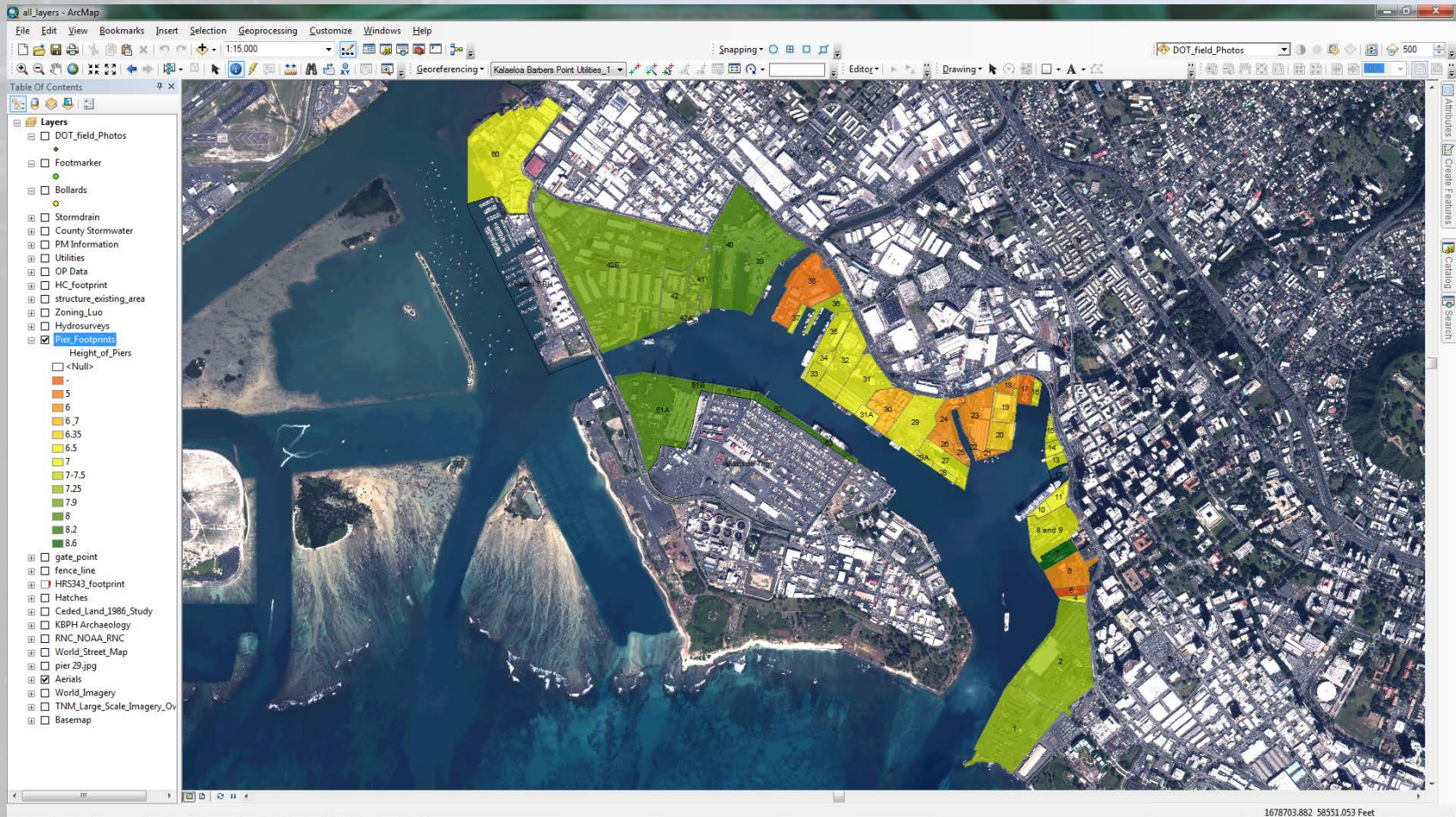


Data Demand Discussion

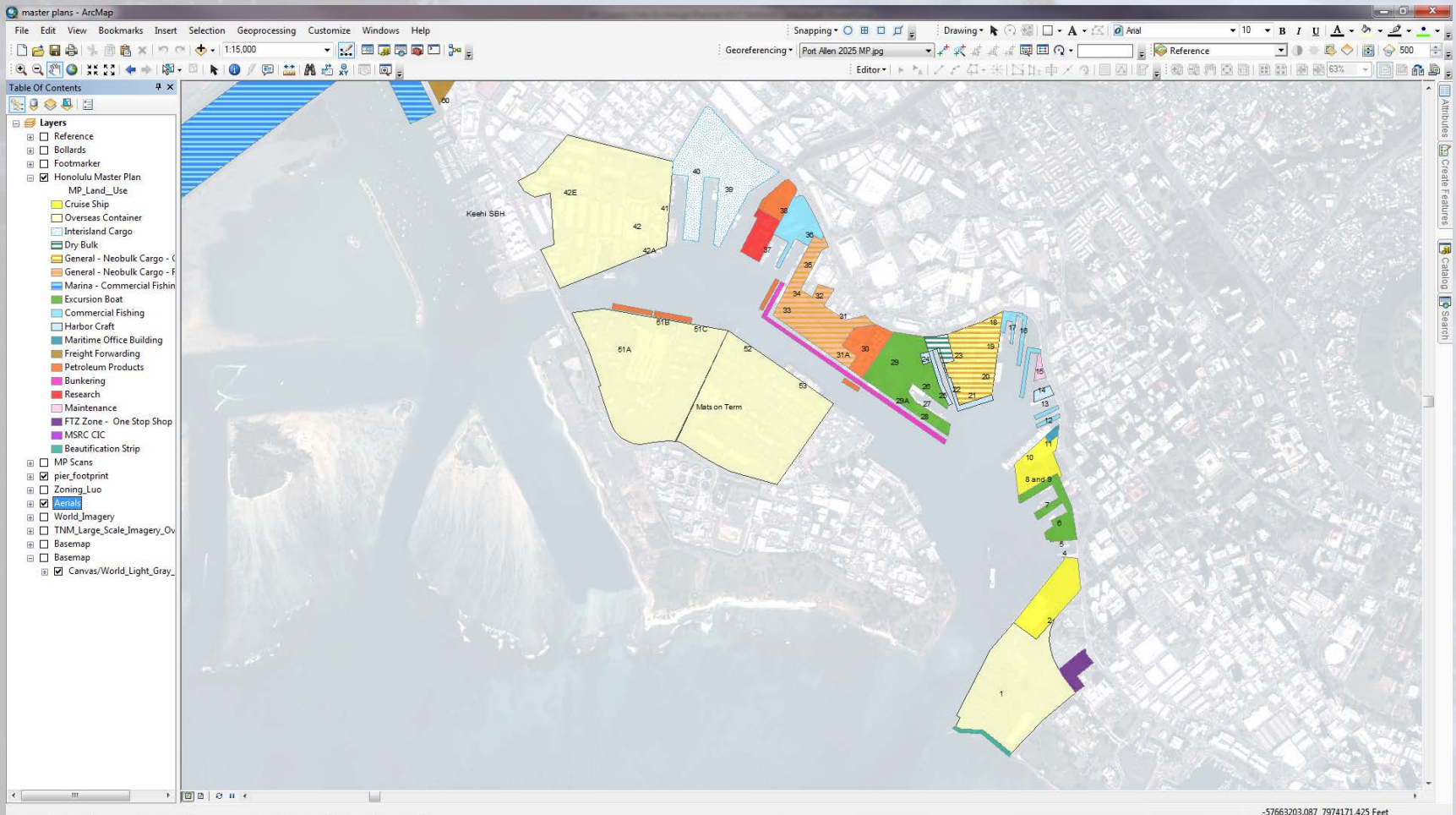
- **Our planning toolbox**
ArcGIS for Desktop.
- **Why we use this planning tool?**
To access complex and diverse data all in one place. Quick references of Utilities, Other Projects in the Area, Environmental Documents, SMA, Zoning, Tenants and Harbor Facilities.
- **How we use this tool?**
Research and communicate relevant planning data for Harbor's Master Plans and Development Plans.
- **We changed the status quo because...**
Too much data to manage, time consuming to research data on hardcopy and archived files, etc.
- **Data we are developing right now**
Stormdrain, Utilities, Permits, Leases, Easements, Bollards, Footmarkers, Pier Footprints, Project Footprints, Environmental Documents, Executive Orders, Zoning, Hydrosurveys, Channels and Tiding Basins, Property Boundaries, Master Plans.
- **Data we wish we had**
LIDAR topography, High Resolution Aerials.
- **At the end of day we need data that are...**
Accurate, easy to read and understand, easy to access.
- **What we would like the world to look like in 10 years**
Cleaner, safer, more efficient, more environmentally responsible harbors and harbor operations.



Harbors GIS



Harbors GIS – Master Plans



Our Planning Toolbox

- General Plans
- Master Plans** ← *Today's Focus*
- Conservation District Use Permits
- Setbacks
- Shoreline Certification
- Shoreline Permits
- Building Permits
- Special Area Management Permits
- Flood Zones



We use this planning tool to...

- Protect the public trust
- Protect public safety
- Manage growth in a sustainable manner
- Coordinate decisions
- Regulate shoreline activities
- Provide direction for future decisions
- Administer regulations pertaining to statute/ code



Our Master Plans

HAWAI'I ISLAND COMMERCIAL HARBORS 2035 MASTER PLAN UPDATE



State of Hawai'i
Department of Transportation
Harbors Division
August 2011

- Recent planning efforts include sea level rise analysis.
- *Hawaii Island Harbors 2035 Master Plan (2011).*
- *Kalaeloa Harbor 2040 Master Plan (ongoing).*
- www.hidot.hawaii.gov/harbors



Sea Level Rise

Hilo Harbor



- Interconnecting roadways an issue.
- Possible issues with breakwaters.

Our Developments



Kapalama Container Terminal



- Increased elevation from 8.25 feet above MLLW to 9.8 feet above MLLW.

