



# Parcel Layers / Tax Map Key

30 May 2014

Coastal Data Exchange Conference

Royce Jones  
[rjones@esri.com](mailto:rjones@esri.com)  
[@rajhawaii](https://twitter.com/rajhawaii)



Past

Present

Future





# Past

**There was a perception in GIS...**

**...that if all layers were surveyed in then  
everything would align!**



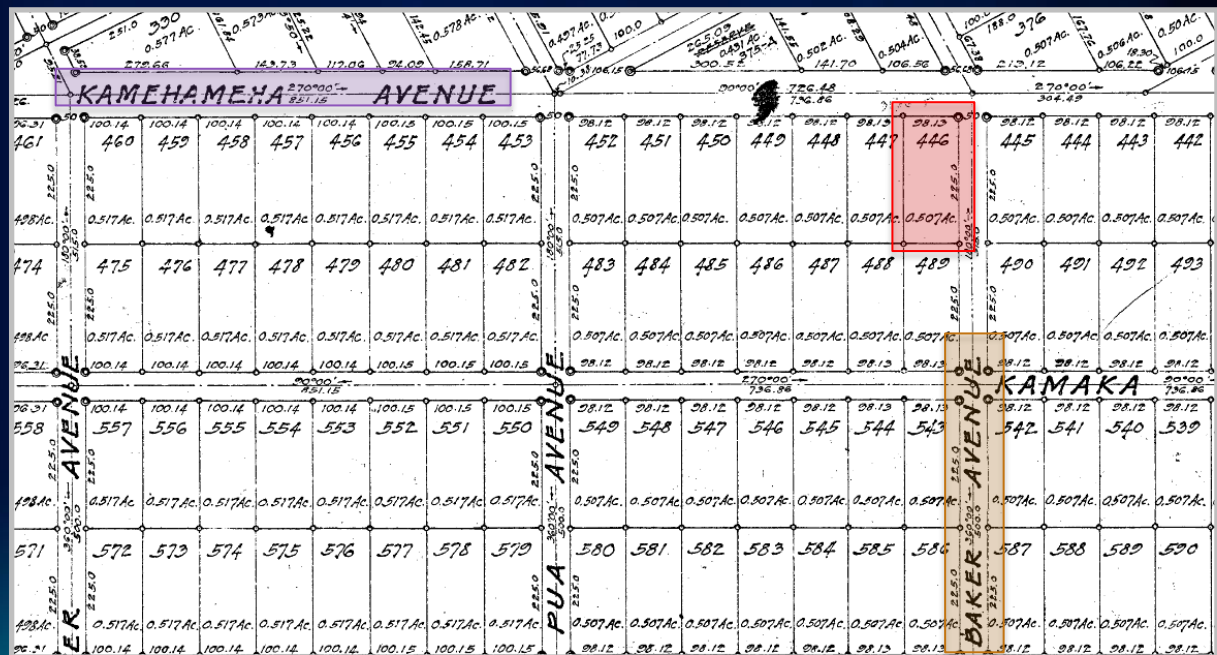
# Past



3,688.71 feet

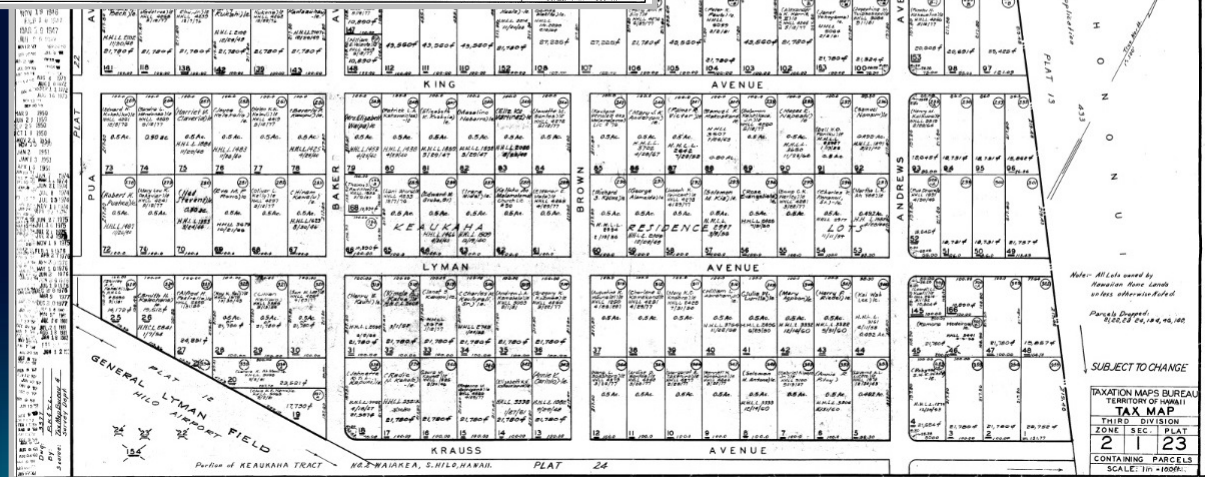
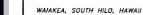
19,192.23 feet

Beginning at the northeast corner of this piece of land, being also the northeast corner of lot 446 and the southwest corner of Kamehameha and Baker Avenues, the true azimuth and distance from the northwest corner of Hilo airport addition (of twenty and fifty-four one-hundredths acres and on the south side of Kamehameha Highway), as shown on Government Survey Registered Maps 2723 and 3017, being two hundred and seventy degrees no minutes and three thousand six hundred and eighty-eight and seventy one-hundredths feet, and the coordinates of said point of beginning referred to Government Survey Triangulation Station "Halai" being two thousand one hundred and seventeen feet north and nineteen thousand one hundred and ninety-two and twenty-three one-hundredths feet east, thence running by azimuths measured clockwise from true south:





Eng. No.	Date	By	Vol. No.	Page
Eng. No.	October 6, 1954	BY	101-107	7-10-54



# Present

Welcome to the  
**COUNTY OF HAWAII**

Home | Mayor | Legislative | Departments | Community

SEARCH

PLANNING - TMK MAPS

Zone 1  
Zone 2  
Zone 3  
Zone 4

Online Services  
Save Time • Complete Online

Job Opportunities  
Work For the County

Public Documents  
Browse • Search • View • Print

Council Records  
Browse • Search • View • Print

Public Documents & Council Records  
User Instructions

CURRENT EVENTS

Hawaii County Comm

TOP

Bids, Pro  
Boards  
Flood A  
Informa  
Vehicle  
State IC  
Permits  
Real Pr  
TMK/Su

Thursday, May 29, 2014  
**Data Download Service**

Download common GIS layers and tables including most used in the Layers are in shape file format. Tables in dbase IV. All data is compressed zip files and will include metadata in XML format. [Click here to view the projection information.](#)

You can also search for specific data using the Data Search box on the top-right portion of every page on this site.

Other Important Items:

- View short [Data Listing](#) (3 pages)
- View full [Summary List](#) by Topic Category
- Go to the [FTP Home](#) directory
- Go straight to the [Layers Directory](#)
- View the [FTP site map](#)
- NEW** View the [Tsunami Evacuation Maps](#)
- NEW** [Download](#) the [Tsunami Evacuation Maps](#)

View the FTP Sitemap

ArGIS\_Layers  
Groups  
Attribute\_Tables  
Layers  
Administrative\_Political  
Economic  
Cultural  
Cultural\_Demographic  
Elevation  
FEMA\_Flood\_Hydrograph  
Imagery\_Raster  
Public\_Safety  
Structures\_Shellfish  
Transportation  
Utilities  
Zoning\_Regulatory  
Street\_Nomenclature\_Benchmarks  
Administrative\_Considerations  
Termux  
Zone1  
Zone2  
Zone3  
Zone4  
Zone5  
Zone6  
Zone7  
Zone8  
Zone9  
Termux\_Georegistered  
Zone10  
Zone11  
Zone12  
Zone13  
Zone14  
Zone15  
Zone16  
Zone17  
Zone18  
Zone19  
Zone20  
Zone21  
Zone22  
Zone23  
Zone24  
Zone25  
Zone26  
Zone27  
Zone28  
Zone29  
Zone30  
Zone31  
Zone32  
Zone33  
Zone34  
Zone35  
Zone36  
Zone37  
Zone38  
Zone39  
Zone40  
Zone41  
Zone42  
Zone43  
Zone44  
Zone45  
Zone46  
Zone47  
Zone48  
Zone49  
Zone50  
Zone51  
Zone52  
Zone53  
Zone54  
Zone55  
Zone56  
Zone57  
Zone58  
Zone59  
Zone60  
Zone61  
Zone62  
Zone63  
Zone64  
Zone65  
Zone66  
Zone67  
Zone68  
Zone69  
Zone70  
Zone71  
Zone72  
Zone73  
Zone74  
Zone75  
Zone76  
Zone77  
Zone78  
Zone79  
Zone80  
Zone81  
Zone82  
Zone83  
Zone84  
Zone85  
Zone86  
Zone87  
Zone88  
Zone89  
Zone90  
Zone91  
Zone92  
Zone93  
Zone94  
Zone95  
Zone96  
Zone97  
Zone98  
Zone99  
Zone100  
Zone101  
Zone102  
Zone103  
Zone104  
Zone105  
Zone106  
Zone107  
Zone108  
Zone109  
Zone110  
Zone111  
Zone112  
Zone113  
Zone114  
Zone115  
Zone116  
Zone117  
Zone118  
Zone119  
Zone120  
Zone121  
Zone122  
Zone123  
Zone124  
Zone125  
Zone126  
Zone127  
Zone128  
Zone129  
Zone130  
Zone131  
Zone132  
Zone133  
Zone134  
Zone135  
Zone136  
Zone137  
Zone138  
Zone139  
Zone140  
Zone141  
Zone142  
Zone143  
Zone144  
Zone145  
Zone146  
Zone147  
Zone148  
Zone149  
Zone150  
Zone151  
Zone152  
Zone153  
Zone154  
Zone155  
Zone156  
Zone157  
Zone158  
Zone159  
Zone160  
Zone161  
Zone162  
Zone163  
Zone164  
Zone165  
Zone166  
Zone167  
Zone168  
Zone169  
Zone170  
Zone171  
Zone172  
Zone173  
Zone174  
Zone175  
Zone176  
Zone177  
Zone178  
Zone179  
Zone180  
Zone181  
Zone182  
Zone183  
Zone184  
Zone185  
Zone186  
Zone187  
Zone188  
Zone189  
Zone190  
Zone191  
Zone192  
Zone193  
Zone194  
Zone195  
Zone196  
Zone197  
Zone198  
Zone199  
Zone200  
Zone201  
Zone202  
Zone203  
Zone204  
Zone205  
Zone206  
Zone207  
Zone208  
Zone209  
Zone210  
Zone211  
Zone212  
Zone213  
Zone214  
Zone215  
Zone216  
Zone217  
Zone218  
Zone219  
Zone220  
Zone221  
Zone222  
Zone223  
Zone224  
Zone225  
Zone226  
Zone227  
Zone228  
Zone229  
Zone230  
Zone231  
Zone232  
Zone233  
Zone234  
Zone235  
Zone236  
Zone237  
Zone238  
Zone239  
Zone240  
Zone241  
Zone242  
Zone243  
Zone244  
Zone245  
Zone246  
Zone247  
Zone248  
Zone249  
Zone250  
Zone251  
Zone252  
Zone253  
Zone254  
Zone255  
Zone256  
Zone257  
Zone258  
Zone259  
Zone260  
Zone261  
Zone262  
Zone263  
Zone264  
Zone265  
Zone266  
Zone267  
Zone268  
Zone269  
Zone270  
Zone271  
Zone272  
Zone273  
Zone274  
Zone275  
Zone276  
Zone277  
Zone278  
Zone279  
Zone280  
Zone281  
Zone282  
Zone283  
Zone284  
Zone285  
Zone286  
Zone287  
Zone288  
Zone289  
Zone290  
Zone291  
Zone292  
Zone293  
Zone294  
Zone295  
Zone296  
Zone297  
Zone298  
Zone299  
Zone300  
Zone301  
Zone302  
Zone303  
Zone304  
Zone305  
Zone306  
Zone307  
Zone308  
Zone309  
Zone310  
Zone311  
Zone312  
Zone313  
Zone314  
Zone315  
Zone316  
Zone317  
Zone318  
Zone319  
Zone320  
Zone321  
Zone322  
Zone323  
Zone324  
Zone325  
Zone326  
Zone327  
Zone328  
Zone329  
Zone330  
Zone331  
Zone332  
Zone333  
Zone334  
Zone335  
Zone336  
Zone337  
Zone338  
Zone339  
Zone340  
Zone341  
Zone342  
Zone343  
Zone344  
Zone345  
Zone346  
Zone347  
Zone348  
Zone349  
Zone350  
Zone351  
Zone352  
Zone353  
Zone354  
Zone355  
Zone356  
Zone357  
Zone358  
Zone359  
Zone360  
Zone361  
Zone362  
Zone363  
Zone364  
Zone365  
Zone366  
Zone367  
Zone368  
Zone369  
Zone370  
Zone371  
Zone372  
Zone373  
Zone374  
Zone375  
Zone376  
Zone377  
Zone378  
Zone379  
Zone380  
Zone381  
Zone382  
Zone383  
Zone384  
Zone385  
Zone386  
Zone387  
Zone388  
Zone389  
Zone390  
Zone391  
Zone392  
Zone393  
Zone394  
Zone395  
Zone396  
Zone397  
Zone398  
Zone399  
Zone400  
Zone401  
Zone402  
Zone403  
Zone404  
Zone405  
Zone406  
Zone407  
Zone408  
Zone409  
Zone410  
Zone411  
Zone412  
Zone413  
Zone414  
Zone415  
Zone416  
Zone417  
Zone418  
Zone419  
Zone420  
Zone421  
Zone422  
Zone423  
Zone424  
Zone425  
Zone426  
Zone427  
Zone428  
Zone429  
Zone430  
Zone431  
Zone432  
Zone433  
Zone434  
Zone435  
Zone436  
Zone437  
Zone438  
Zone439  
Zone440  
Zone441  
Zone442  
Zone443  
Zone444  
Zone445  
Zone446  
Zone447  
Zone448  
Zone449  
Zone450  
Zone451  
Zone452  
Zone453  
Zone454  
Zone455  
Zone456  
Zone457  
Zone458  
Zone459  
Zone460  
Zone461  
Zone462  
Zone463  
Zone464  
Zone465  
Zone466  
Zone467  
Zone468  
Zone469  
Zone470  
Zone471  
Zone472  
Zone473  
Zone474  
Zone475  
Zone476  
Zone477  
Zone478  
Zone479  
Zone480  
Zone481  
Zone482  
Zone483  
Zone484  
Zone485  
Zone486  
Zone487  
Zone488  
Zone489  
Zone490  
Zone491  
Zone492  
Zone493  
Zone494  
Zone495  
Zone496  
Zone497  
Zone498  
Zone499  
Zone500  
Zone501  
Zone502  
Zone503  
Zone504  
Zone505  
Zone506  
Zone507  
Zone508  
Zone509  
Zone510  
Zone511  
Zone512  
Zone513  
Zone514  
Zone515  
Zone516  
Zone517  
Zone518  
Zone519  
Zone520  
Zone521  
Zone522  
Zone523  
Zone524  
Zone525  
Zone526  
Zone527  
Zone528  
Zone529  
Zone530  
Zone531  
Zone532  
Zone533  
Zone534  
Zone535  
Zone536  
Zone537  
Zone538  
Zone539  
Zone540  
Zone541  
Zone542  
Zone543  
Zone544  
Zone545  
Zone546  
Zone547  
Zone548  
Zone549  
Zone550  
Zone551  
Zone552  
Zone553  
Zone554  
Zone555  
Zone556  
Zone557  
Zone558  
Zone559  
Zone560  
Zone561  
Zone562  
Zone563  
Zone564  
Zone565  
Zone566  
Zone567  
Zone568  
Zone569  
Zone570  
Zone571  
Zone572  
Zone573  
Zone574  
Zone575  
Zone576  
Zone577  
Zone578  
Zone579  
Zone580  
Zone581  
Zone582  
Zone583  
Zone584  
Zone585  
Zone586  
Zone587  
Zone588  
Zone589  
Zone590  
Zone591  
Zone592  
Zone593  
Zone594  
Zone595  
Zone596  
Zone597  
Zone598  
Zone599  
Zone600  
Zone601  
Zone602  
Zone603  
Zone604  
Zone605  
Zone606  
Zone607  
Zone608  
Zone609  
Zone610  
Zone611  
Zone612  
Zone613  
Zone614  
Zone615  
Zone616  
Zone617  
Zone618  
Zone619  
Zone620  
Zone621  
Zone622  
Zone623  
Zone624  
Zone625  
Zone626  
Zone627  
Zone628  
Zone629  
Zone630  
Zone631  
Zone632  
Zone633  
Zone634  
Zone635  
Zone636  
Zone637  
Zone638  
Zone639  
Zone640  
Zone641  
Zone642  
Zone643  
Zone644  
Zone645  
Zone646  
Zone647  
Zone648  
Zone649  
Zone650  
Zone651  
Zone652  
Zone653  
Zone654  
Zone655  
Zone656  
Zone657  
Zone658  
Zone659  
Zone660  
Zone661  
Zone662  
Zone663  
Zone664  
Zone665  
Zone666  
Zone667  
Zone668  
Zone669  
Zone670  
Zone671  
Zone672  
Zone673  
Zone674  
Zone675  
Zone676  
Zone677  
Zone678  
Zone679  
Zone680  
Zone681  
Zone682  
Zone683  
Zone684  
Zone685  
Zone686  
Zone687  
Zone688  
Zone689  
Zone690  
Zone691  
Zone692  
Zone693  
Zone694  
Zone695  
Zone696  
Zone697  
Zone698  
Zone699  
Zone700  
Zone701  
Zone702  
Zone703  
Zone704  
Zone705  
Zone706  
Zone707  
Zone708  
Zone709  
Zone710  
Zone711  
Zone712  
Zone713  
Zone714  
Zone715  
Zone716  
Zone717  
Zone718  
Zone719  
Zone720  
Zone721  
Zone722  
Zone723  
Zone724  
Zone725  
Zone726  
Zone727  
Zone728  
Zone729  
Zone730  
Zone731  
Zone732  
Zone733  
Zone734  
Zone735  
Zone736  
Zone737  
Zone738  
Zone739  
Zone740  
Zone741  
Zone742  
Zone743  
Zone744  
Zone745  
Zone746  
Zone747  
Zone748  
Zone749  
Zone750  
Zone751  
Zone752  
Zone753  
Zone754  
Zone755  
Zone756  
Zone757  
Zone758  
Zone759  
Zone760  
Zone761  
Zone762  
Zone763  
Zone764  
Zone765  
Zone766  
Zone767  
Zone768  
Zone769  
Zone770  
Zone771  
Zone772  
Zone773  
Zone774  
Zone775  
Zone776  
Zone777  
Zone778  
Zone779  
Zone780  
Zone781  
Zone782  
Zone783  
Zone784  
Zone785  
Zone786  
Zone787  
Zone788  
Zone789  
Zone790  
Zone791  
Zone792  
Zone793  
Zone794  
Zone795  
Zone796  
Zone797  
Zone798  
Zone799  
Zone800  
Zone801  
Zone802  
Zone803  
Zone804  
Zone805  
Zone806  
Zone807  
Zone808  
Zone809  
Zone810  
Zone811  
Zone812  
Zone813  
Zone814  
Zone815  
Zone816  
Zone817  
Zone818  
Zone819  
Zone820  
Zone821  
Zone822  
Zone823  
Zone824  
Zone825  
Zone826  
Zone827  
Zone828  
Zone829  
Zone830  
Zone831  
Zone832  
Zone833  
Zone834  
Zone835  
Zone836  
Zone837  
Zone838  
Zone839  
Zone840  
Zone841  
Zone842  
Zone843  
Zone844  
Zone845  
Zone846  
Zone847  
Zone848  
Zone849  
Zone850  
Zone851  
Zone852  
Zone853  
Zone854  
Zone855  
Zone856  
Zone857  
Zone858  
Zone859  
Zone860  
Zone861  
Zone862  
Zone863  
Zone864  
Zone865  
Zone866  
Zone867  
Zone868  
Zone869  
Zone870  
Zone871  
Zone872  
Zone873  
Zone874  
Zone875  
Zone876  
Zone877  
Zone878  
Zone879  
Zone880  
Zone881  
Zone882  
Zone883  
Zone884  
Zone885  
Zone886  
Zone887  
Zone888  
Zone889  
Zone890  
Zone891  
Zone892  
Zone893  
Zone894  
Zone895  
Zone896  
Zone897  
Zone898  
Zone899  
Zone900  
Zone901  
Zone902  
Zone903  
Zone904  
Zone905  
Zone906  
Zone907  
Zone908  
Zone909  
Zone910  
Zone911  
Zone912  
Zone913  
Zone914  
Zone915  
Zone916  
Zone917  
Zone918  
Zone919  
Zone920  
Zone921  
Zone922  
Zone923  
Zone924  
Zone925  
Zone926  
Zone927  
Zone928  
Zone929  
Zone930  
Zone931  
Zone932  
Zone933  
Zone934  
Zone935  
Zone936  
Zone937  
Zone938  
Zone939  
Zone940  
Zone941  
Zone942  
Zone943  
Zone944  
Zone945  
Zone946  
Zone947  
Zone948  
Zone949  
Zone950  
Zone951  
Zone952  
Zone953  
Zone954  
Zone955  
Zone956  
Zone957  
Zone958  
Zone959  
Zone960  
Zone961  
Zone962  
Zone963  
Zone964  
Zone965  
Zone966  
Zone967  
Zone968  
Zone969  
Zone970  
Zone971  
Zone972  
Zone973  
Zone974  
Zone975  
Zone976  
Zone977  
Zone978  
Zone979  
Zone980  
Zone981  
Zone982  
Zone983  
Zone984  
Zone985  
Zone986  
Zone987  
Zone988  
Zone989  
Zone990  
Zone991  
Zone992  
Zone993  
Zone994  
Zone995  
Zone996  
Zone997  
Zone998  
Zone999  
Zone1000

State of Hawaii  
**Department of Accounting and General Services**

Home Office of the Comptroller AARC Administrative Rules Reports

**COUNTY OF MAUI Hawaii**

Mayor Council Departments For Residents For Business

You are here: [Home](#) > [Departments](#) > [Finance](#) > [Real Property Assessment Division](#) > [Tax Map Information](#)

**Tax Map Information**

**Ordering**  
Tax maps may be ordered from the Real Property Tax Division office, either in person or by mail. Maps cost \$3 each plus \$1 postage and handling per copy. [Tax Map Prints Ordering](#)

**Online**  
Scanned images of tax maps can be downloaded from the County web site at:  
[Tax Maps in Zone1](#)  
[Tax Maps in Zone2](#)  
[Tax Maps in Zone3](#)  
[Tax Maps in Zone4](#)  
[Tax Maps in Zone5](#)  
[Tax Maps in Zone6](#)

tax map key symbols for tax purposes

Land Court Application No.:

Land Court Map No.:

Land Court Consolidation No.:

Land Court Map No.:

File Plan No.:

[File Plan Index](#)

Registered Map No.:

[Registered Map Index](#)

HTS/HSS Plat Map No.:

[HTS/HSS Plat Map Index](#)

**County of Kauai** Bringing Government to the People  
State of Hawaii site map | location

GOVERNMENT BUSINESS SERVICES

Real Property Maps

The mapping of Hawaii was initiated in 1917 with the appropriation Act. A Branch was created for the purpose of making maps for the State. In 1932, a comprehensive plan for a coordinated mapping system was adopted. Its project included the mapping of the entire island of Hawaii, the creation of a key system.

The key system provided for the accounting of all properties based on location, boundaries, area and ownership.

The state was divided into four tax districts. This can be seen on the [state wide map](#). The island of Kauai was designated as the map was further broken down into five zones (shown in the map below). [Zone 1](#) encompasses Waimea, [Zone 2](#) Koloa, [Zone 3](#) Lihue, [Zone 4](#) Hanalei, and [Zone 5](#) Niihau.

Individual Plat maps can be obtained directly from the Real Property Assessment Office by placing an order.

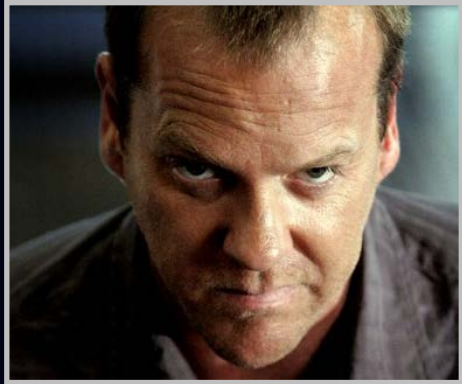
[Open order form in new window](#)

Map of the 5 zones of Kauai

KAUAI

Map of the 5 zones of Kauai

# Present



**Jack:**

“Chloe, sea level is rising in Honolulu. I need a map of all properties that will be inundated by a three foot rise in sea level and I need to know the total building value on those properties... and send it to my phone.”

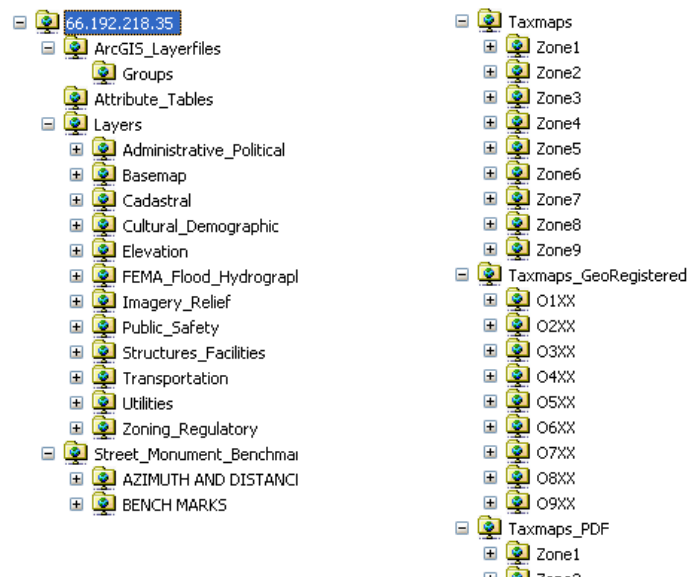


**Chloe:**

“OK Jack. I can get the parcel data from the City and County of Honolulu ftp site and the building values from a related table. I'll publish it as a web map and send it to your phone... what about the other islands?”



# Present



- Display [NGA 1FT Aerial MrSID Index](#) (click to view or download MrSid files)
- Display [NGA 1FT Aerial Zip Index](#) (click to download geo-registered MrSid files in zip format with metadata)

## Index of /Layers/Cadastral/


Name	Size	Date Modified
[parent directory]		
<a href="#">easement_centerline.zip</a>	337 kB	5/14/13 8:46:00 AM
<a href="#">easement_dpp.zip</a>	1.7 MB	5/14/13 8:46:00 AM
<a href="#">Park.zip</a>	864 kB	5/26/14 9:20:00 AM
<a href="#">plat_easements.zip</a>	9.9 MB	5/14/13 8:46:00 AM
<a href="#">regulatory_parcel.zip</a>	53.8 MB	5/29/14 9:10:00 AM
<a href="#">tax_parcel.zip</a>	54.2 MB	5/29/14 9:30:00 AM
<a href="#">Tax_Plat.zip</a>	7.3 MB	5/26/14 9:40:00 AM
<a href="#">taxparcel_siteaddress.zip</a>	74.5 MB	5/4/12 7:59:00 AM

## Index of /Attribute\_Tables/


Name	Size	Date Modified
[parent directory]		
<a href="#">allparcelatts.zip</a>	59.6 MB	5/29/14 8:01:00 AM
<a href="#">asmtgis.zip</a>	3.8 MB	5/29/14 8:01:00 AM
<a href="#">asmtpitt.zip</a>	3.9 MB	5/29/14 8:01:00 AM
<a href="#">landuse_tabs2010.zip</a>	16.4 MB	4/18/13 12:35:00 PM
<a href="#">legdat.zip</a>	8.6 MB	5/29/14 8:01:00 AM
<a href="#">new_landuse_tables.txt</a>	2.0 kB	6/21/13 8:26:00 AM
<a href="#">ownalltype.zip</a>	17.7 MB	5/29/14 8:02:00 AM
<a href="#">owndat.zip</a>	12.0 MB	5/29/14 8:01:00 AM
<a href="#">ownmlt.zip</a>	6.7 MB	5/29/14 8:01:00 AM
<a href="#">pardat.zip</a>	4.3 MB	5/29/14 8:01:00 AM
<a href="#">siteaddress.zip</a>	2.8 MB	5/29/14 8:01:00 AM






# Present



State of Hawaii  
**Office of Planning**

Search this site 

Search.USA.gov



Home About OP ▾ Programs ▾ Regulatory ▾ Selected Plans ▾ Planner's Toolbox ▾ Reports

Home » Hawaii Statewide GIS Program » Download GIS Data

## DOWNLOAD GIS DATA

Information contained in these files is derived from public records that are constantly undergoing change and does not replace a site survey. The data and information is not warranted for content or accuracy. The State of Hawaii does not guarantee the positional or thematic accuracy of the GIS data. The GIS data or cartographic digital files are not a legal representation of any of the features which it depicts and the State disclaims any assumption of the legal status which the data represents. Any implied warranties, including warranties of merchantability or fitness for a particular purpose, shall be expressly excluded. The State of Hawaii encourages GIS data users to verify the suitability of the data before use. Please report any discrepancies to [gis@dbedt.hawaii.gov](mailto:gis@dbedt.hawaii.gov).

### GIS LINKS

GIS DATA ▾

MAPS, TOOLS, AND APPLICATIONS ▾


OTHER RESOURCES ▾

GIS REST SERVICES ▾

*TMK Parcels (All Islands)	<a href="#">Preview</a>	1. <a href="#">Oahu Parcels</a> 2. <a href="#">Oahu Plats</a> 3. <a href="#">Neighbor Islands</a>	1. <a href="#">*Hawaii</a> 2. <a href="#">Kauai</a> 3. <a href="#">*Maui County</a> 4. <a href="#">Niihau</a> 5. <a href="#">*Oahu</a> 6. <a href="#">*Oahu Plats</a>
----------------------------	-------------------------	---	--




FID	Feature ID
SHAPE	Feature Geometry
TMK	Unique 9 Digit Tax Map Key Number
OWNER	Owner Name from Master file
MAJOROWNER	Major Owner, rest set to "other" (see definition, below)
BIGSTOWNER	Biggest Owner, rest set to "other" (see definition, below)
TAXACRES	Total taxable acres from Master and PITT files
LANDVALUE	Total land value from Master and PITT files
LANDEXEMPT	Total land value exemption from Master and PITT files
BLDGVALUE	Total building value from Master and PITT files
BLDGEXEMPT	Total building value exempt. from Master and PITT files
PITTCODE	PITT Code - used to identify the tax rate applied to the property
HOMEOWNER	Homeowner exemption applied - Yes, No, or Unknown
GISACRES	Parcel Acreage calculated by the GIS (not official)

# Future



State of Hawaii  
**Office of Planning**

[Search.USA.gov](#)

[Home](#)
[About OP](#)
[Programs](#)
[Regulatory](#)
[Selected Plans](#)
[Planner's Toolbox](#)
[Reports](#)

[Home » Hawaii Statewide GIS Program » Download GIS Data](#)

## DOWNLOAD GIS DATA

### GIS LINKS


[GIS DATA](#)

[MAPS, TOOLS, AND APPLICATIONS](#)


[OTHER RESOURCES](#)

[GIS REST SERVICES](#)

[City & County of Honolulu.gov](#)
[Department of Planning & Permitting \(DPP\)](#)
[Honolulu Land Information System \(HoLIS\)](#)
[CCH Map and Feature](#)



Department of Planning & Permitting  
**Honolulu Land Information System (HoLIS)**  
 Interactive GIS Web Map and Data Services



[HoLIS Home](#)
[Interactive MAPS](#)
[Download Data Service](#)
[About HoLIS/GIS](#)
[How to Contact Us](#)

[Share](#)
[f](#)
[t](#)
[g+](#)
[v](#)
[p](#)

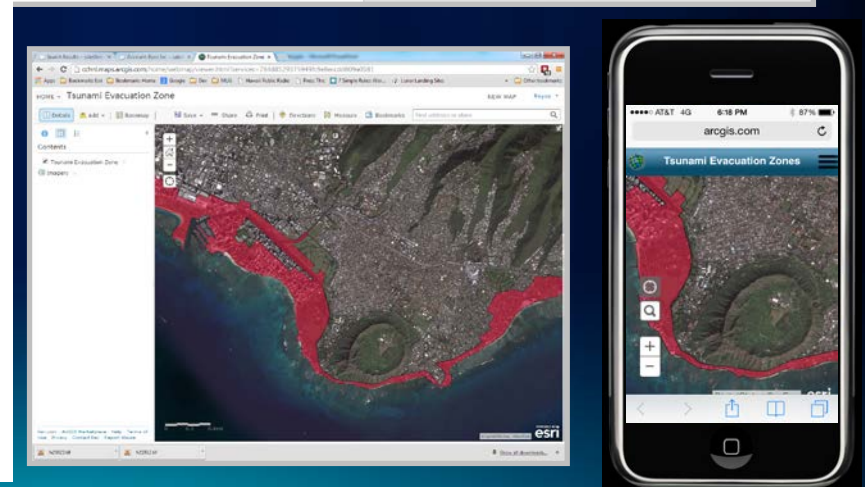
Thursday, May 29, 2014

Listing of Public Web Maps and Services published by the City and County of Honolulu

[View Tutorials](#)
 (written by Royce Jones, ESRI)

	Category	Name	Web Map	Map Service	Feature Service	Geocoding Service
1	Administrative	Polling Places and Election Precincts	<a href="#">view web map</a>	X	X	
2	Administrative	Realtor Neighborhoods	<a href="#">view web map</a>	X	X	
3	Administrative	Honolulu City Council Districts	<a href="#">view web map</a>	X	X	
4	Administrative	Neighborhood Board Subdistrict	<a href="#">view web map</a>	X	X	
5	Basemap	CCH Basemap	<a href="#">view web map</a>	X		
6	Cadastral	Federal, State and City Owned Land	<a href="#">view web map</a>		X	
7	Cadastral	City & County Owned Land	<a href="#">view web map</a>		X	
8	Cadastral	City & County Lessee Land	<a href="#">view web map</a>		X	
9	Cadastral	State Owned Land	<a href="#">view web map</a>		X	
10	Cadastral	State Lessee Land	<a href="#">view web map</a>		X	
11	Cadastral	Federal Owned Land	<a href="#">view web map</a>		X	
12	Cadastral	Federal Lessee Land	<a href="#">view web map</a>		X	
13	Cadastral	Easements	<a href="#">view web map</a>	X		
14	Cadastral	Na Ala Hele Trails	<a href="#">view web map</a>		X	
15	Cadastral	Shoreline Access Points	<a href="#">view web map</a>		X	
16	Cadastral	Parks	<a href="#">view web map</a>		X	
17	Cadastral	(Tax) Parcels	<a href="#">view web map</a>	X	X	
18	Geocoding Service	Composite_ZipcodesOptional				X
19	Facilities	Parking Facilities	<a href="#">view web map</a>		X	
20	Facilities	Electric Vehicle Charging Stations	<a href="#">view web map</a>		X	
21	Facilities	Parks By Activity	<a href="#">view web map</a>		X	
22	Physical	Soil Types	<a href="#">view web map</a>	X		
23	Physical	Tree Canopy- Existing	<a href="#">view web map</a>	X		
24	Physical	Tree Canopy -Possible	<a href="#">view web map</a>	X		
25	Physical	Tree Canopy - Impervious Surfaces	<a href="#">view web map</a>	X		
26	Physical	Tree Canopy - Land Cover	<a href="#">view web map</a>	X		

Records that are constantly updated and information is not guaranteed. The State disclaims any liability. Any implied warranties, express or implied, for a particular purpose, shall be void. Users are to verify the suitability of data for their use. [gis@dbedt.hawaii.gov](mailto:gis@dbedt.hawaii.gov).





# Future

## Maui County Land Mapping System



## Malama Open Data GIS Portal

## Getting GIS Data for Maui County

### Maui County Land Mapping system (MALAMA)

This is the County of Maui's Open GIS Data Portal. This portal is the County Land Mapping system, known as "**Malama**". Malama has been used to create and use web maps and web map applications.

This data portal gives you access to:

- Web map applications
- Map documents in PDF format
- GIS feature services for use in GIS software and applications

### Hawaii State GIS Open Data Portal

This portal is intended to become a part of the Hawaii Open GIS Data Portal



### Maui County Land Mapping System (Malama) Data Portal




### MauiCounty TsunamiEvac 20130307 final

[DETAILS](#)[TABLE](#)[DOWNLOAD](#)[SUBSCRIBE](#)[DOWNLOAD](#)[SUBSCRIBE](#)[Spreadsheet](#)[KML](#)[Shapefile](#)[API](#)[GeoJSON](#)<http://mauicountyda>[COPY](#)[GeoService](#)<http://services.arcgi>[COPY](#)

# Future

- Communities organize across many geographic boundaries and business needs

 <b>Office of Planning</b> State of Hawaii		<b>Coastal Data Exchange</b> East West Center, Imin Conference Center at Jefferson Hall	
<b>Coastal Data Exchange</b> <b>DRAFT Conference Agenda</b>		Track 1	Data Demand
		Track 2	Data Marketplace
		Track 3	Data Supply
		Track 4	Data Tools and Resources
Friday, May 30, 2014			
7:30 am – 8:30 am	Registration		
8:30 am – 9:00 am	Keynote Address: Art Challacombe, Deputy Director, City & County of Honolulu, Department of Planning & Permitting		
9:00 am – 10:40 am	Planner Plenary		
	Erosion- Based Setbacks: County of Maui Planning Department		
	Master Plans: State Department of Transportation		
	Community Plans: City & County of Honolulu, Department of Planning & Permitting		
	Shoreline Certification: State Department of Land & Natural Resources (DLNR) Office of Conservation & Coastal Lands		
	Conservation District Use Permits: State DLNR Office of Conservation & Coastal Lands		
	General Plans: County of Kauai Planning Department		
	Post-Hazard Mitigation Guidance: County of Maui Planning Department		
	Floodplain Management: County of Hawaii Public Works Engineering Division		
	General Flood Control Plan: State DLNR Engineering Division		
10:40 am – 11:00 am	Break		
11:00 am – 11:45 am	GIS Panel on Data Sharing: County GIS Coordinators, Hawaii State GIS Program, Hawaii Geographic Information Coordinating Council		
11:45 am – 12:30 pm	Law & Policy Panel on Data in Decision Making: Department of the Attorney General and UH Sea Grant		
12:30 pm – 1:15 pm	Lunch		
1:15 pm – 2:30 pm	Data Plenary		
	Parcel Layers/ Tax Map Key: Royce Jones, Environmental Systems Research Institute, Inc.		
	Aerial Photos and Erosion Rates: Dr. Bradley Romine, UH Sea Grant and State DLNR		
	USACE 2013 Topo/ Bathy LiDAR Survey of Hawaiian Islands: Jessica Podoski, U.S. Army Corps of Engineers		
	Inundation: Dr. Chip Fletcher, UH School of Ocean & Earth Science & Technology		



# Future

## Community Parcels



*Showing property ownership for permitting and regulatory needs....*



*Showing property value for emergency management and revenue needs....*



*Showing property use for land use and economic development needs....*



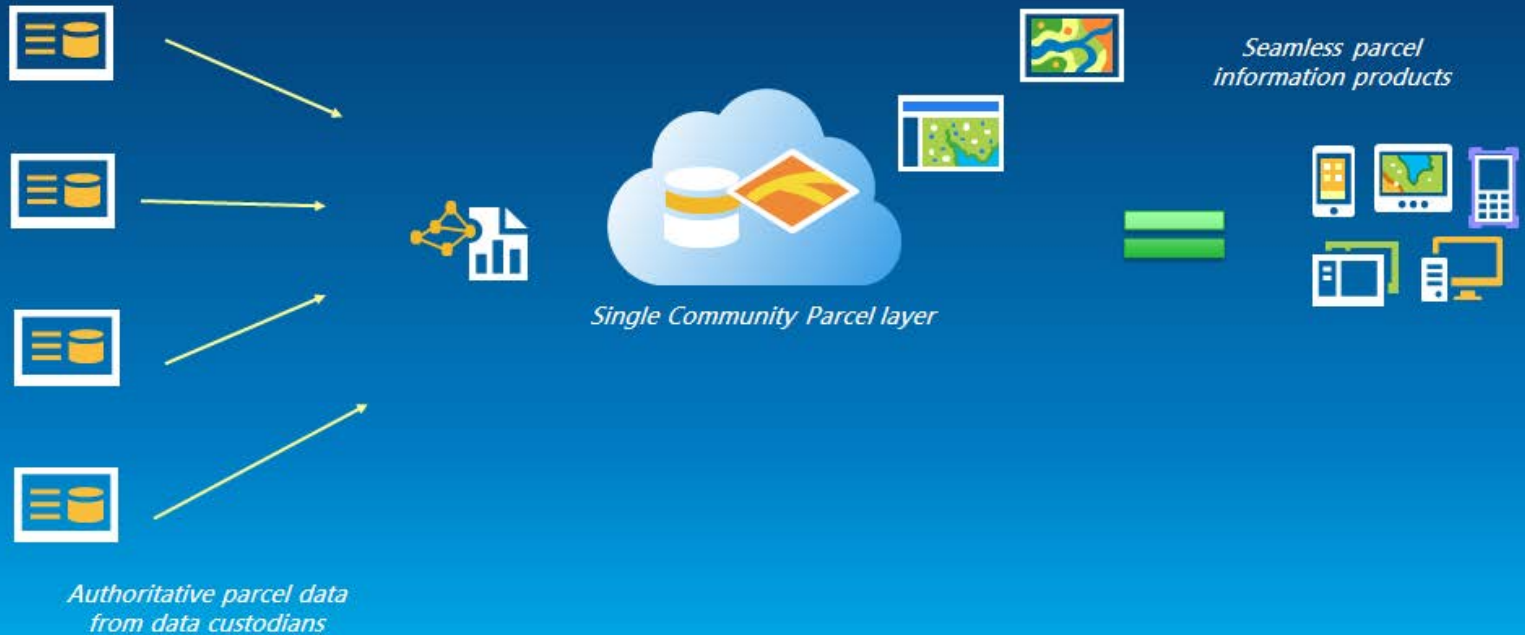
Community Parcels

*Containing authoritative data from local data providers.....*

# Future

## Community Parcels

How does it come to life?





# Future

## Community Contributor Workflow

County to State

Step 1 : Configure Tool



- Single Input Parcel Layer
- Local FIPS code
- Fields to be mapped
- ArcGIS Online credentials
- Save settings (for future runs)

Step 2: Run Tool



- Run Manually – Ad-Hoc
- Schedule

## Community Aggregator Workflow

State performs aggregation

### Step 1 : Configure Field Mapper



- Single Input Parcel Layer
- Local FIPS code
- Fields to be mapped
- Save settings (for future runs)

### Step 2 : Configure Aggregator



- Multiple Input Parcel Layers
- Save Settings (for future runs)

### Step 3 : Run Tools



# Coastal Data Exchange

## DRAFT Conference Agenda

Track 1	Data Demand
Track 2	Data Marketplace
Track 3	Data Supply
Track 4	Data Tools and Resources

How data were developed

Strengths and weaknesses

Planners use my data for...

Planners could also use my data for...

Differences in how counties/ agencies have used it

Other ways they could use it

Ways my data should not be used

How to access my data

The future of my dataset





# Parcel Layers / Tax Map Key

30 May 2014

Coastal Data Exchange Conference

Royce Jones  
[rjones@esri.com](mailto:rjones@esri.com)  
[@rajhawaii](https://twitter.com/rajhawaii)

