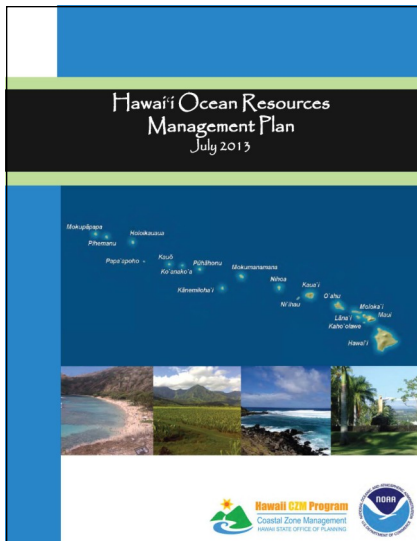


HAWAII OCEAN RESOURCES MANAGEMENT PLAN

Connecting Land and Sea • Preserving our ocean heritage • Promoting collaboration and stewardship



The 2013 Hawaii Ocean Resources Management Plan (ORMP) is a state plan that provides guidance to state agencies with responsibilities relating to marine and coastal zone management. This ORMP update process took place over a period of 18 months with the input of county, state, and federal agencies, and community members statewide.

The purpose of the ORMP is to provide a framework for the protection and management of our most precious resource, the ocean surrounding us. It inter-relates important state agency responsibilities such as appropriate coastal development, watershed management, marine debris, and coral reef protection.

The 2013 ORMP identified 11 management priorities. It further identifies the respective goals, and metrics and maps pathways towards their implementation. This update of the ORMP is the first time that performance measurement has been made part of the plan.

While management priorities are assigned to state agencies, the ORMP acknowledges that partnerships and engagement with counties and federal agencies is critical to making progress towards implementation of these goals to preserve our ocean waters and coastal areas. Continued collaboration and engagement with key agencies and organiza-

tions remains a critical aspect of this implementation phase of the ORMP. Partners include:

Federal: NOAA, EPA, USACE, USCG, NMFS, HIHWNMS, PacIOOS, PMNM, U.S. Navy, DOT

State/County: DBEDT, DOA, DOH, DLNR, DOT, HSCD, OHA, MACZAC, UH-SOEST, the City and County of Honolulu, County of Kauai, County of Maui, County of Hawaii

Others: The Nature Conservancy, Bishop Museum

To learn more about the 2013 Ocean Resources Management Plan, please download the document at planning.hawaii.gov.

THREE GUIDING PERSPECTIVES

Perspective 1: Connecting Land and Sea

Careful and appropriate use of the land is required to maintain the diverse array of ecological, social, cultural, and economic benefits we derive from the sea.

Perspective 2: Preserving our Ocean Heritage

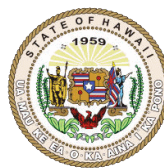
A vibrant and healthy ocean environment is the foundation for the quality of life valued in Hawaii and the well-being of its people, now and for generations to come.

Perspective 3: Promoting Collaboration and Stewardship

Working together and sharing knowledge, experience, and resources will improve and sustain our efforts to care for the land and the sea.

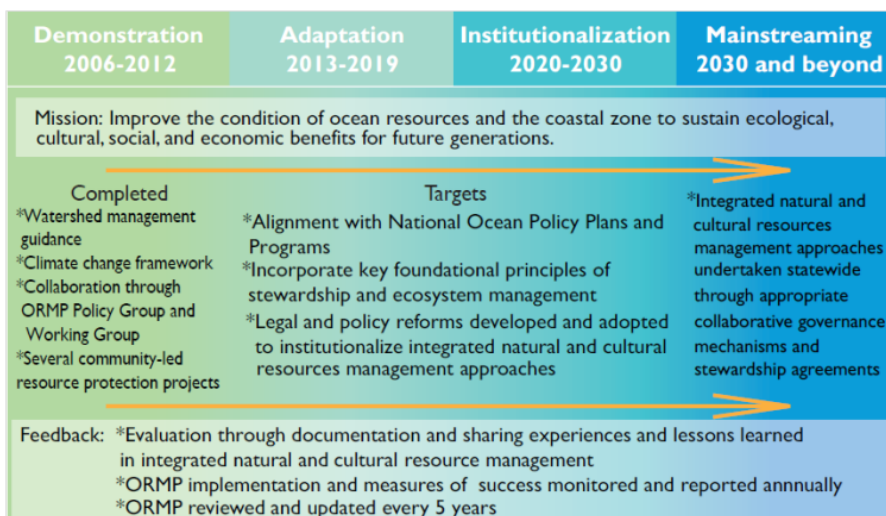


Hawaii CZM Program
Coastal Zone Management
HAWAII STATE OFFICE OF PLANNING



Office of Planning
State of Hawaii
P.O. Box 2359
Honolulu, Hawaii 96804-2359
(808) 587-2846

PHASING APPROACH



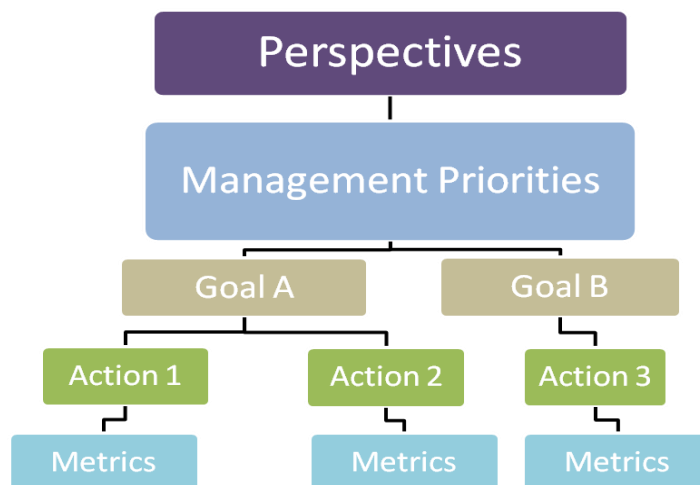
The 2006 ORMP moved from a sector-based approach implemented by jurisdictional entities to a place-based approach implemented by a broad base of stakeholders. Realizing that resource protection would take many years, a phase approach was initiated as shown above. Each new phase will build upon lessons learned from the previous phase while recognizing and addressing new threats and forces. The 2013 ORMP is currently in its second phase and addresses priorities for Adaptation.

IMPLEMENTATION FRAMEWORK

The 2013 ORMP has identified eleven Management Priorities for the current Adaptation phase. Each Management Priority has one or more goals for each. Goals are subsequently tied to actions to address these goals and metrics for measuring where we are, where we would like to be, and indicates what will be measured and reported.

11 Management Priorities

- Management Priority #1:** Appropriate Coastal Development
- Management Priority #2:** Management of Coastal Hazards
- Management Priority #3:** Watershed Management
- Management Priority #4:** Marine Resources
- Management Priority #5:** Coral Reef
- Management Priority #6:** Ocean Economy
- Management Priority #7:** Cultural Heritage of the Ocean
- Management Priority #8:** Training, Education, and Awareness
- Management Priority #9:** Collaboration and Conflict Resolution
- Management Priority #10:** Community and Place-Based Ocean Management Projects
- Management Priority #11:** National Ocean Policy and Pacific Regional Ocean Initiatives



Hawaii CZM Program

Coastal Zone Management

HAWAII STATE OFFICE OF PLANNING

Office of Planning
 State of Hawaii
 P.O. Box 2359
 Honolulu, Hawaii 96804-2359
 (808) 587-2846



<http://planning.hawaii.gov/czm>

Find us on Facebook
 OfficeofPlanning.HIgov

twitter PlanningHIgov