



WHAT IS THE MAUI COASTAL USE MAPPING PROJECT?

The **Coastal Use Mapping Project** is designed to fill a critical information gap in ocean management by mapping significant human uses of the nearshore ocean area in the Honolulu – Wahikuli region. The intent is to gain a better understanding of the spatial range and intensity of key human activities and use-types in this region in order to better inform resource management. To this end, a participatory mapping workshop will be held where local resource users, scientists, and stakeholders will create maps of ocean uses. Data, maps and analytical products will be made available to local community groups, state and federal agencies, NGOs, and to other interested parties.

WHY NOW, AND WHY HONOLUA - WAHIKULI.

Coral reefs in Hawai'i are facing increasing pressures from a growing variety of ocean uses, as well as increased coastal development and watershed impacts. The Coastal Use Mapping Project is intended as a first step to improving regional coastal and watershed management activities. The baseline information collected through this project will provide a better understanding of human uses, issues, and constraints in these regions. It can help inform managers so they can make management decisions to better protect the ecosystem, while minimizing impacts on those who depend on marine resources and reducing user conflict. The project includes collecting and mapping existing watershed information, conducting a participatory mapping workshop, and follow-up stakeholder interviews to gain a more in-depth understanding of human uses and use motivations that affect the region. Through this process we hope to answer the questions:

- Who are the primary resource users in the region?
- Where do activities take place, and where is activity most concentrated?
- To what extent do different user-groups rely on local coastal/marine resources?
- When do different activities take place?
- What are the observed impacts of different uses?
- What local management activities are already in place?
- Where is there a potential for user conflicts?
- What are the perceived problems (and potential solutions) in the region?
- What are potential opportunities for management action?

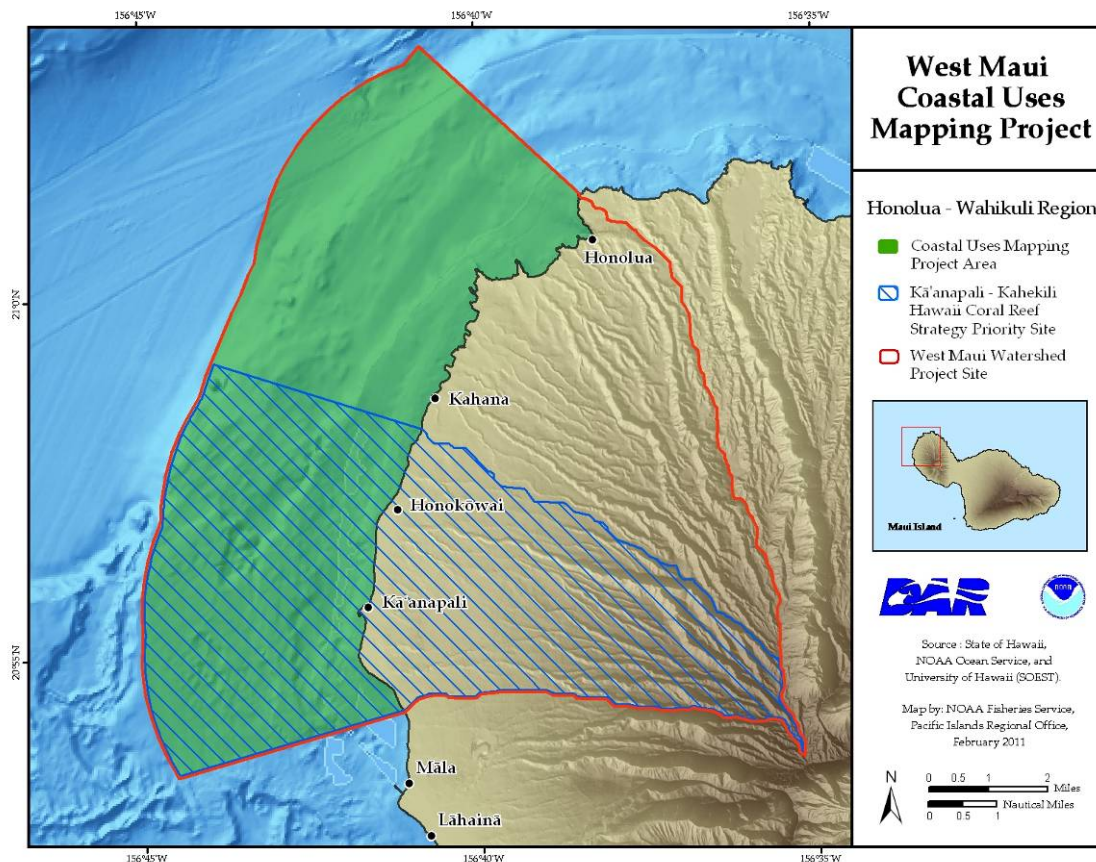
WHO IS SPONSORING THE MAPPING PROJECT?

The Maui Coastal Use Mapping Project is a partnership of the Hawai'i Division of Aquatic Resources (DAR), NOAA Fisheries, Pacific Islands Regional Office (PIRO), and NOAA Ocean Service, Pacific Services Center (PSC). This is a project of the Hawaii Coral Program's Local Action Strategies (LAS), with funding from the NOAA Coral Reef Conservation Program (CRCP).

WHAT IS THE PROJECT AREA?

The Coastal Use Mapping Project will document human coastal and marine uses in the area extending from the Honolulu watershed to the Wahikuli watershed and from coast to the state jurisdictional boundary of three nautical miles out to sea. This region is a priority site for the Hawaii Coral Reef Strategy (HCRS)[†] as well as for the West Maui Watershed Project, managed by the U.S. Army Corp of Engineers.

[†] <http://coralreef.noaa.gov/aboutcrp/strategy/reprioritization/managementpriorities/>



WHAT ARE THE OUTPUTS AND OUTCOMES OF THE PROJECT?

The Coastal Use Mapping Project will produce the following outputs between August 2010 and December 2011:

- **Regional Maps of Coastal and Nearshore Ocean Uses** - Drawing upon the experience and knowledge of regional resource users, knowledgeable local stakeholders, and experts in coastal use and management on the island of Maui, the project will develop comprehensive maps, GIS data layers, and analytical products reflecting the variety and extent of ocean uses in the region.
- **Interactive Digital Mapping Tool for Local Stakeholders and Natural Resource Management Agencies** - Once GIS layers are created, they will be assembled into a digital tool that will allow users to select for use-types of interest within the project region. Stakeholders will be able to understand the extent of use-types, how they relate to each other, and how they relate to other types of information (e.g. mooring sites, zoned areas, and populated places).

HOW WILL THE PRODUCTS BE DISSEMINATED AND USED?

The Project is designed to inform ongoing management and policy decisions among federal and state agencies responsible for nearshore coral reef ecosystems in Hawai'i, with a focus on the Hawaii Coral Reef Conservation Program's priority management sites. The information will be made available to local stakeholders, community groups, and NGOs to help facilitate local natural resource stewardship efforts. Data and products will be made available to any interested parties via various publicly accessible websites. The results for the Hawai'i Island Coastal Mapping Project (recently conducted at the Kawaihae – Keahole priority site) can be accessed at: <http://www.mpa.gov/dataanalysis/>.

CONTACTS

Arielle Levine
Regional Social Scientist
NOAA Fisheries PIRO
Arielle.Levine@noaa.gov

Petra MacGowan
Planner
Division of Aquatic Resources
Petra.MacGowan@hawaii.gov

Jamie Carter
Physical Scientist
NOAA Pacific Services Center
Jamie.Carter@noaa.gov