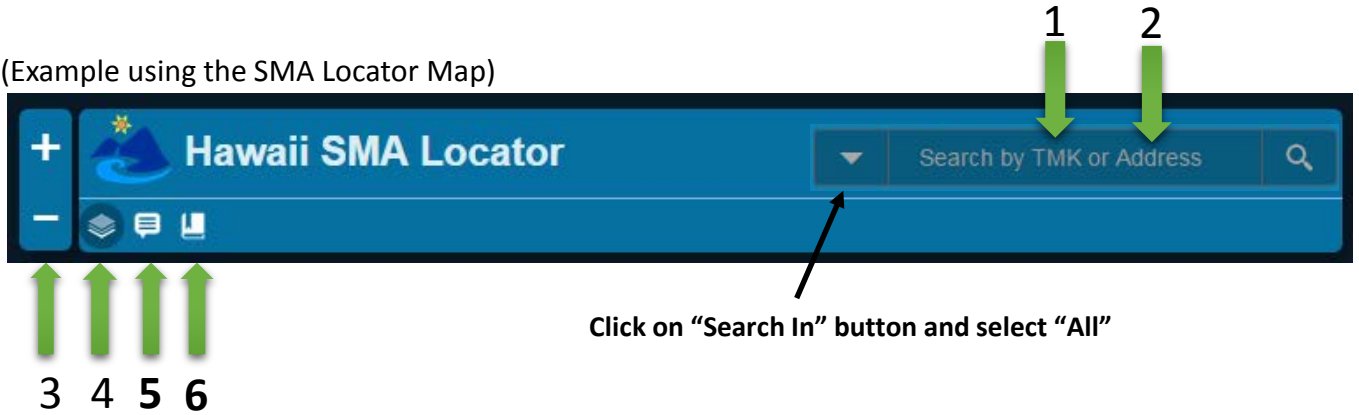



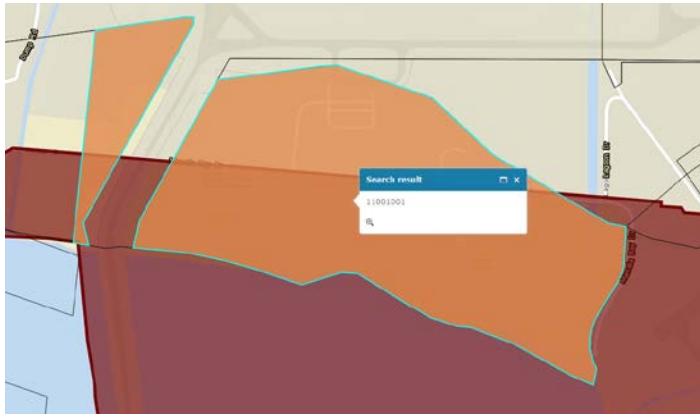
How to use the Locator Maps (EZ, LSB, SLUD, and SMA):


(Example using the SMA Locator Map)

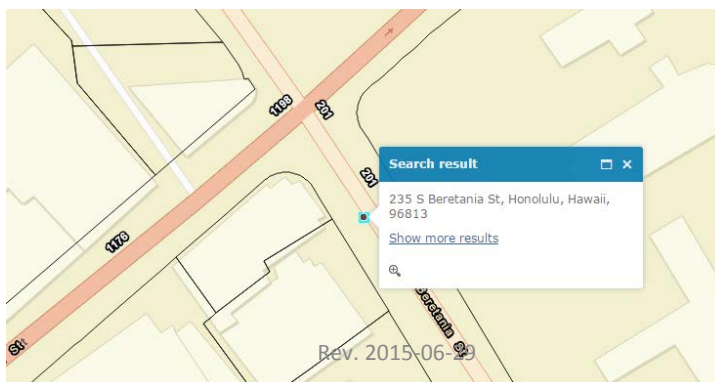


Click on "Search In" button and select "All"

- 1. Search by TMK:** Click on the "Search In"  down arrow button and select "All." Enter 8 (Oahu) or 9 (Neighbor Island) digit TMK Number. Hit <Enter> or the Search Button.
 - The map will zoom into the selected TMK parcel, highlighted in orange with blue outline.
 - First digit of TMK is the County Number: 1=Honolulu, 2=Maui, 3=Hawaii, 4=Kauai
 - Examples on entering TMK parcel numbers:
 - Honolulu County TMK 1-1-001:001 is entered as 11001001 (County Number is not used)
 - Maui County TMK 2-2-001:010 is entered as 222001010
 - Hawaii County TMK 2-1-001:012 is entered as 321001012
 - Kauai County TMK 1-2-006:009 is entered as 412006009



- 2. Search by Address:** Click on the "Search In"  down arrow button and select "All." Enter the Street Address with Street Number, Street Name, City, HI, Zip Code (e.g. 235 S. Beretania St, Honolulu, HI 96813).



3. Zoom in/out Tool.
4. Basemap Layers Tool. Change the basemap background of the map (e.g. Imagery, Topo, Terrain, Streets, etc.)
5. Click to get Details (more information and instructions) about the map.
6. Bookmarks Tool. Click to zoom to preset bookmarked map extents.