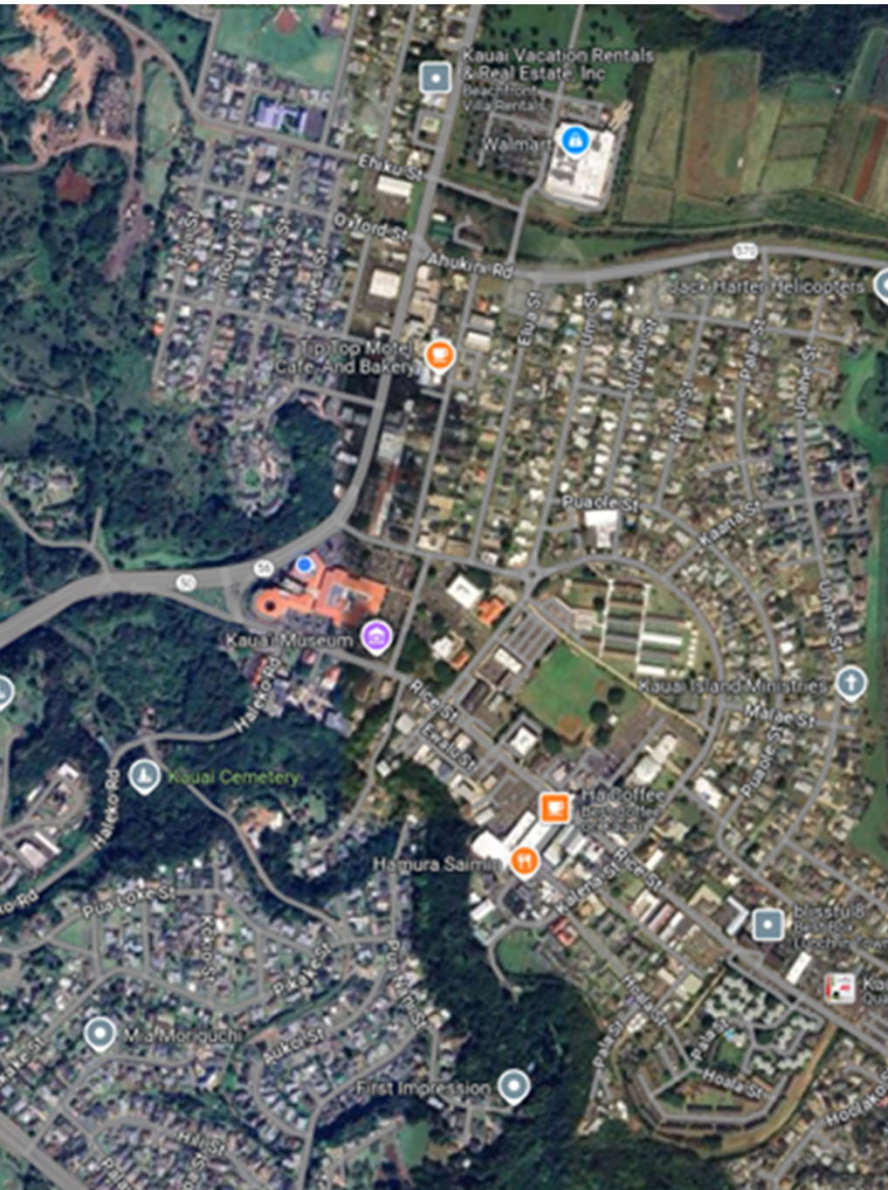


Līhu'e Town
TOD Infill
Development





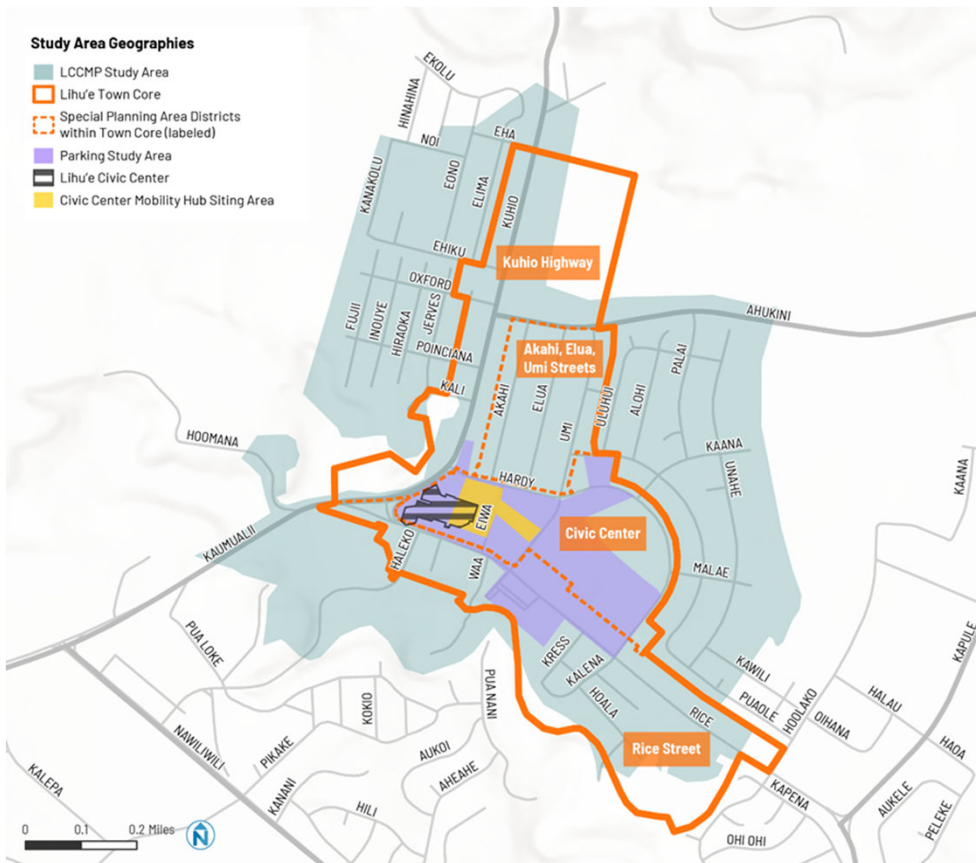
New Project Proposed for State TOD Strategic Plan: Līhu'e Town TOD Infill Development

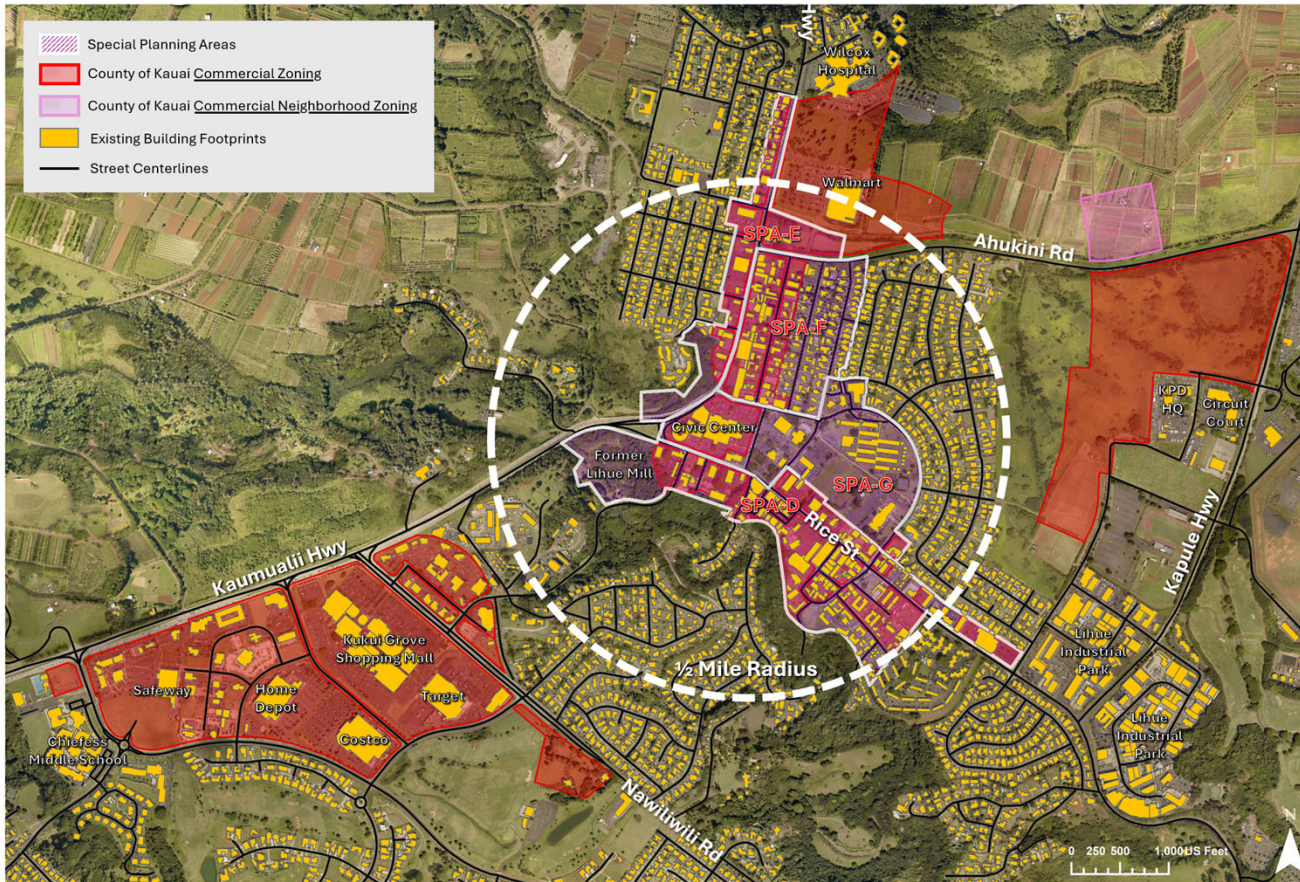
- Facilitate infill development in Līhu'e Town
 - Promote denser, walkable, mixed-use neighborhoods
 - Enhance mobility and transit in close proximity within/to/from Līhu'e Town
 - Workforce Housing

Līhu'e Civic Center Redevelopment Feasibility Study – 2024



Līhu'e Civic Center Mobility Plan – 2023





New Project: Līhu'e Town Multifamily Housing Feasibility Study

Līhu'e Town Multifamily Housing Feasibility Study



Līhu'e Town Multifamily Housing Feasibility Study



Līhu'e Town Multifamily Housing Feasibility Study

