

Project | Applicant | Award

Location Map

Benefits / Potential Impact

Kūwili Station TOD Redevelopment Area

Master Planning

\$700,000

City & County of Honolulu, Dept of Planning & Permitting

Iwilei, O’ahu

Development of a master plan for redevelopment of City properties and a 20-acre area surrounding the Kūwili Station into a walkable, high-density, mixed-use community with expanded access to affordable housing, economic opportunities, and transit and multi-modal transportation options. Planning work will include conceptual planning for buildout and open/green space, improvements to the street network and bike and pedestrian connections within the area and with adjoining neighborhoods, and siting and conceptual plans for a mobility hub near the Kūwili Station.



Proposed New TOD Project.

Award advances planning for the catalytic transformation of lands around the Kūwili Station into a vibrant, walkable, mixed-use community that provides affordable housing and economic opportunities with ready access to rail, in alignment with City TOD plans and State TOD objectives for the area. Improvements to the street and pedestrian network and siting of a mobility hub in this area will expand access to rail service, activate streetscapes, and enhance mobility for residents and businesses from within and outside the area.

Līhu’e Town TOD Multifamily Housing

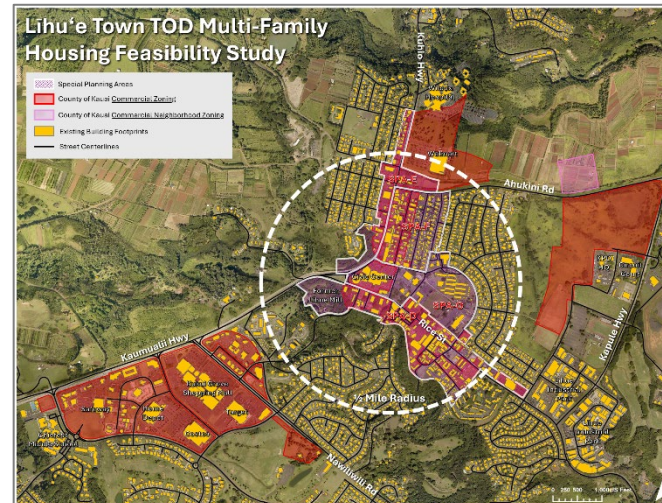
Feasibility Study

\$300,000

County of Kaua’i, Planning Department

Līhu’e, Kaua’i

Study to evaluate financial feasibility and capacity for affordable multifamily housing within the Līhu’e Town Core and commercially zoned areas near the Town Core. Study will provide housing prototypes, recommendations for implementation pathways to encourage infill redevelopment and TOD, including regulatory requirements, zoning amendments, and other actions to reduce risk for infill redevelopment projects, and lay groundwork for addressing infrastructure requirements for infill housing.



Proposed New TOD Project.

Award will advance planning and development of higher-density multifamily housing and mixed-use infill development in Līhu’e Town. This furthers County plan goals to direct growth to existing urban centers and will support the County’s vision for the redevelopment and economic revitalization of Līhu’e Town and its commercial areas. Study builds off of prior TOD and mobility planning work completed for the redevelopment of the Līhu’e Town Core.