



Kalaeloa Master Plan Update

September 2024

Hawaii Community Development Authority



Community Development Districts on O'ahu



Kalaeloa Community Development District



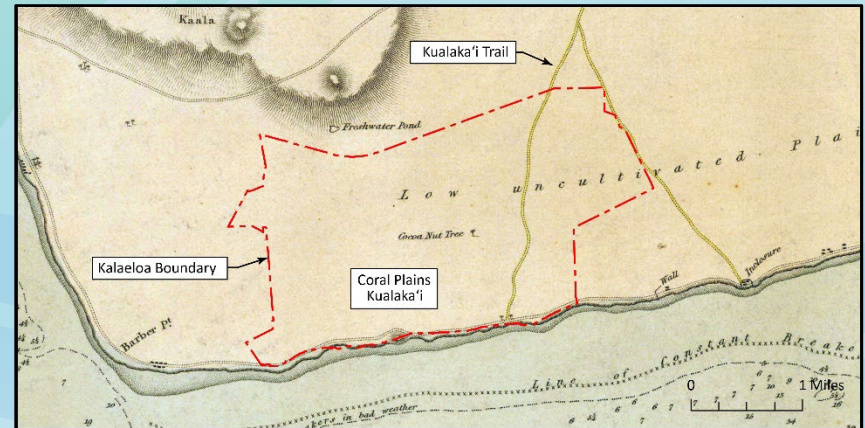
Kalaeloa Master Plan Vision

**Kea hana nei
i ka waiwai
pilikanaka**
Creating social value

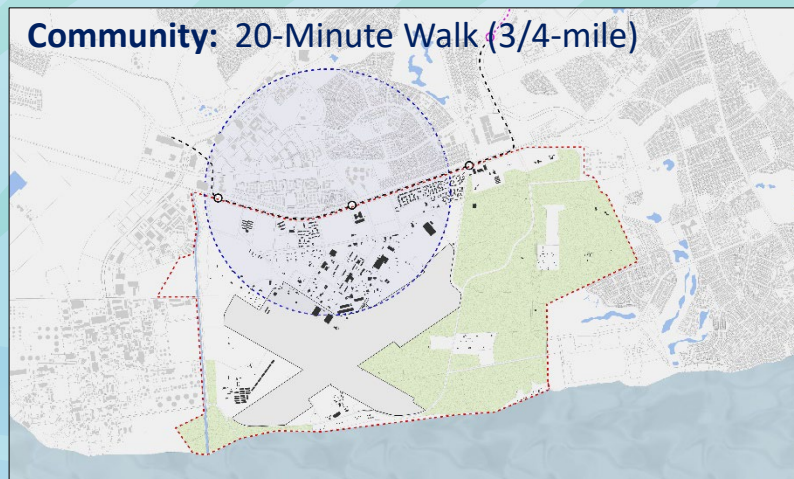
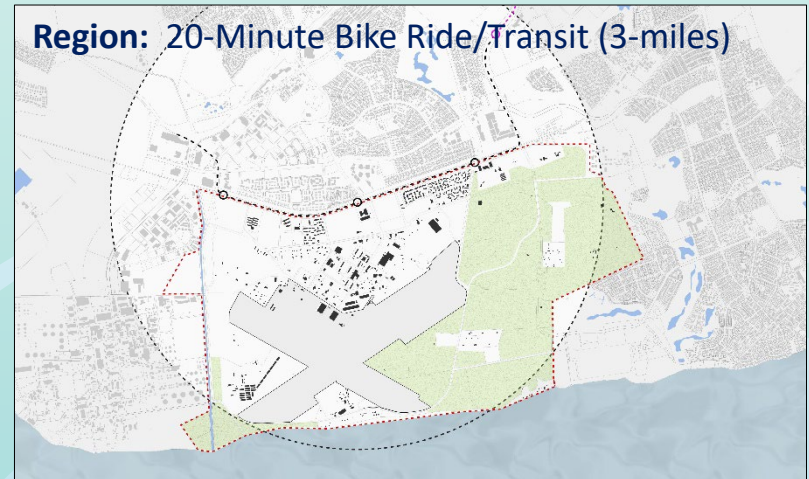
**Ho'onui
waiwai a me
hanapa'a**
*Economic development
and employment*

**Ho'omohala
kaulike**
Balancing development

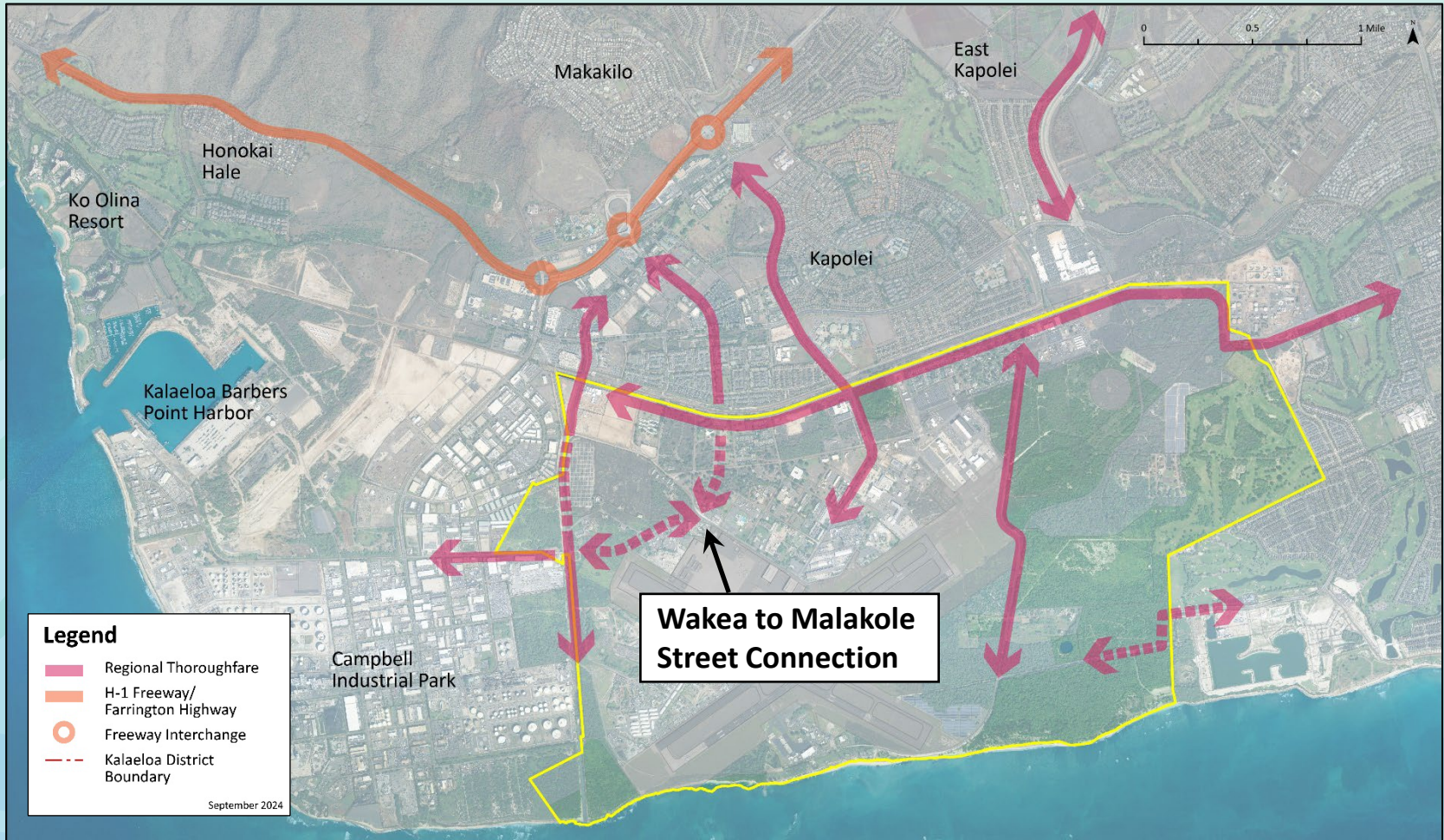
- Housing, connectivity, and open space
- Infrastructure to support industry and jobs
- Design for sustainability and socioeconomic equity: the 20-minute city



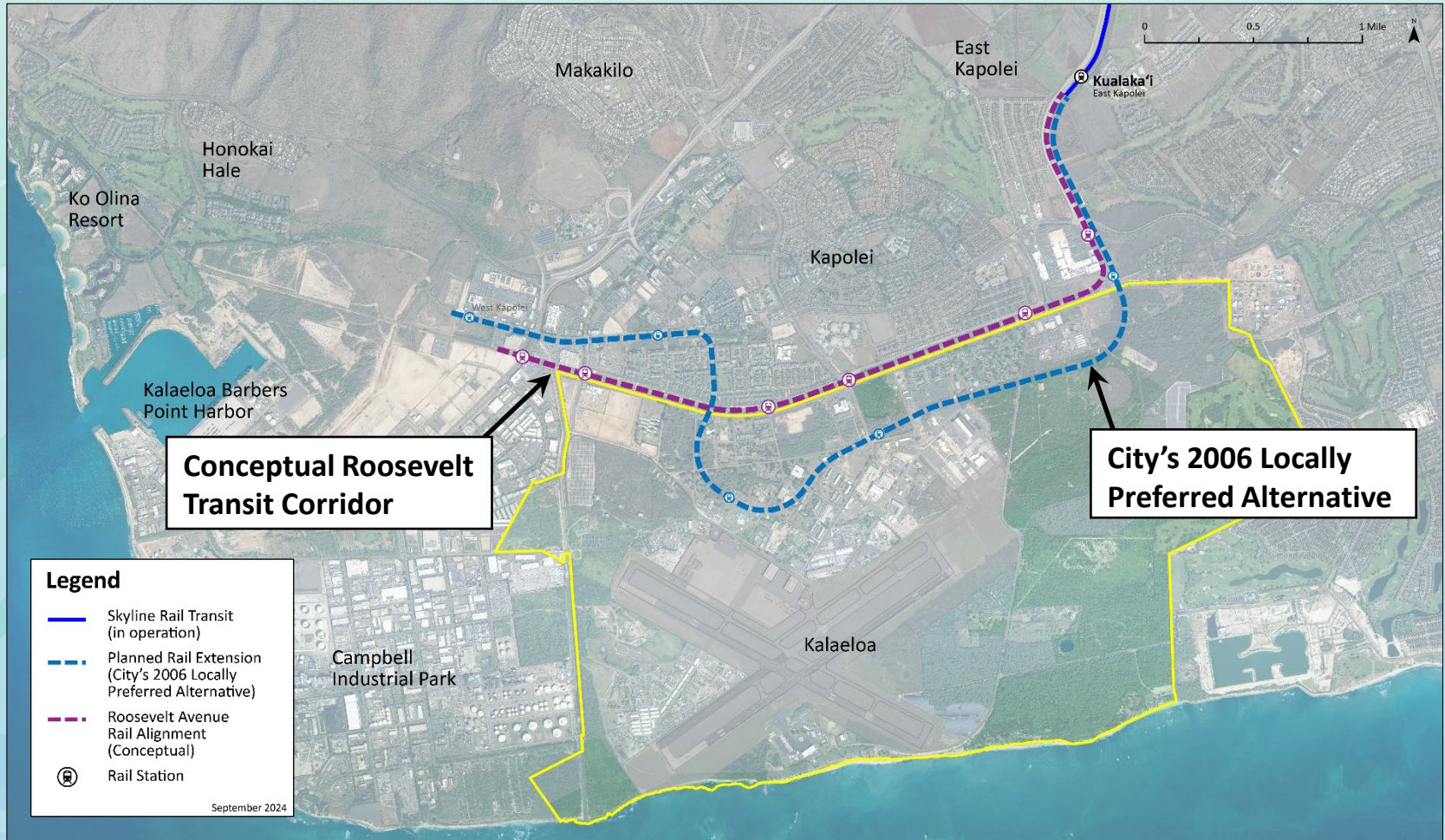
The 20-Minute City



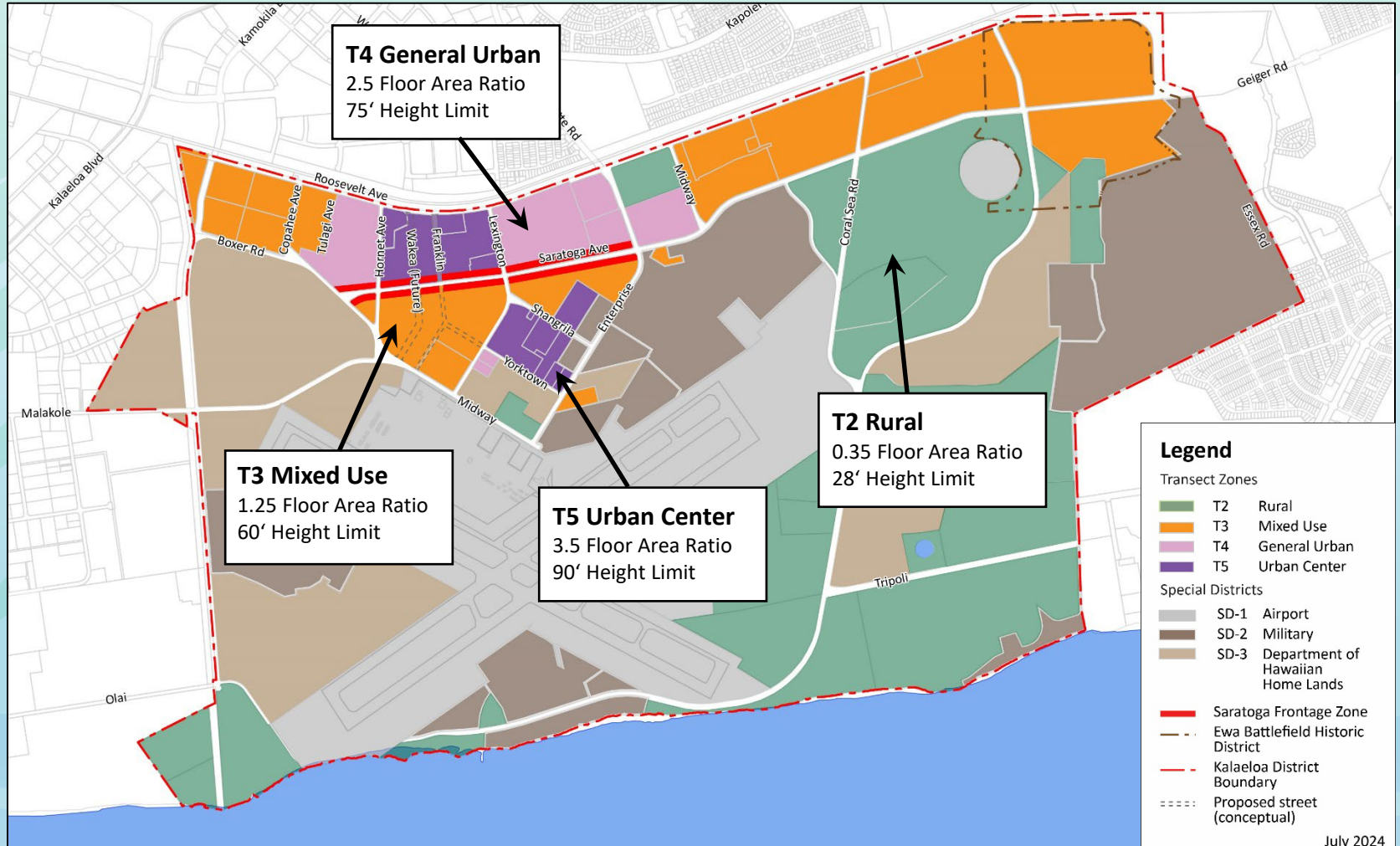
Regional Connectivity - Roadways



Regional Connectivity - Transit

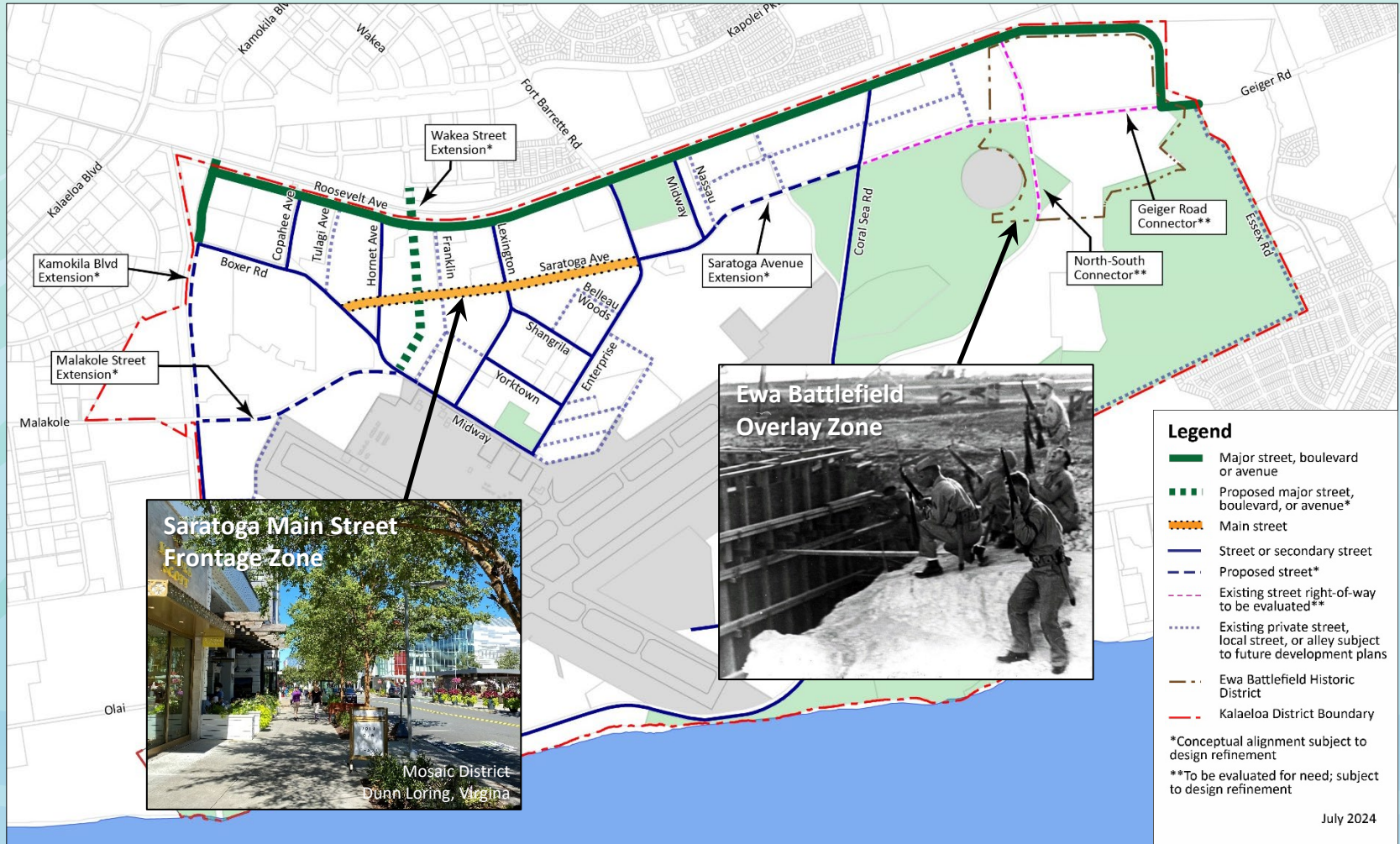


Land Use (Draft)



July 2024

Thoroughfare Plan



Next Steps

- Community stakeholder comments under review
- Decision-making for master plan and rules in early 2025

<https://dbedt.hawaii.gov/hcda/kalaeloa-plan-and-rules/>

Craig K. Nakamoto

Executive Director

craig.k.nakamoto@hawaii.gov

(808) 594-0320

Ryan Tam

Director of Planning and Development

ryan.am.tam@hawaii.gov

(808) 594-0338

Mahalo!

