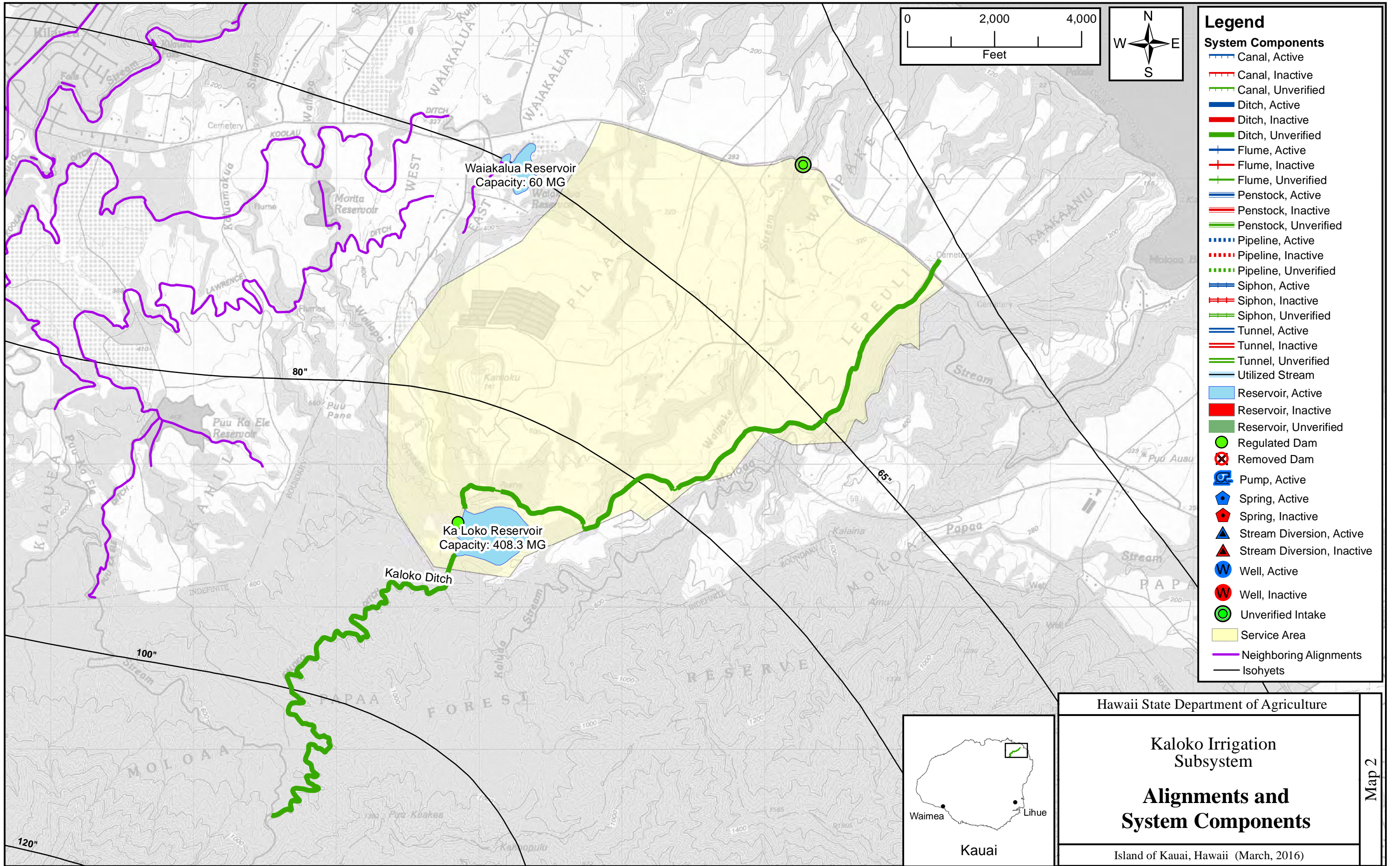


Legend
 Important Agricultural Lands

Hawaii State Department of Agriculture	
Important Agricultural Lands (2018)	
Hawaii (November, 2018)	

Map 1



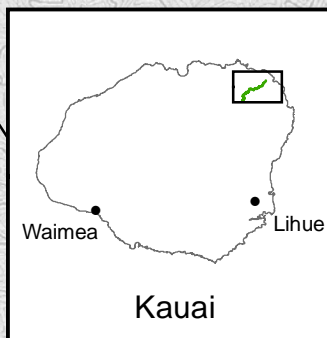
- Legend**
- System Components**
- Canal, Active
 - Canal, Inactive
 - Canal, Unverified
 - Ditch, Active
 - Ditch, Inactive
 - Ditch, Unverified
 - Flume, Active
 - Flume, Inactive
 - Flume, Unverified
 - Penstock, Active
 - Penstock, Inactive
 - Penstock, Unverified
 - Pipeline, Active
 - Pipeline, Inactive
 - Pipeline, Unverified
 - Siphon, Active
 - Siphon, Inactive
 - Siphon, Unverified
 - Tunnel, Active
 - Tunnel, Inactive
 - Tunnel, Unverified
 - Utilized Stream
 - Reservoir, Active
 - Reservoir, Inactive
 - Reservoir, Unverified
 - Regulated Dam
 - Removed Dam
 - Pump, Active
 - Spring, Active
 - Spring, Inactive
 - Stream Diversion, Active
 - Stream Diversion, Inactive
 - Well, Active
 - Well, Inactive
 - Unverified Intake
 - Service Area
 - Neighboring Alignments
 - Isohyets

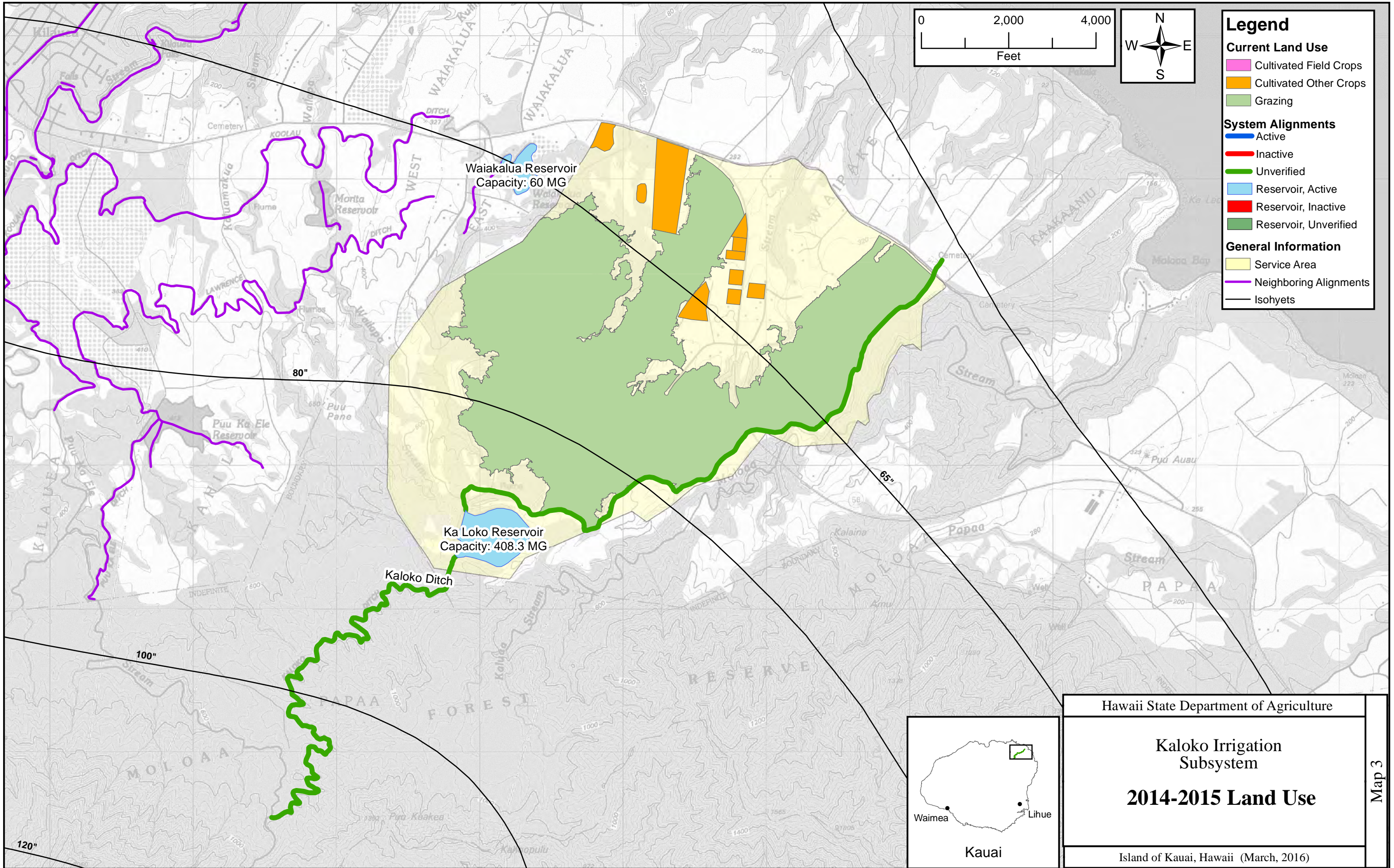
Hawaii State Department of Agriculture

Kaloko Irrigation Subsystem

Alignments and System Components

Island of Kauai, Hawaii (March, 2016)





Legend

Current Land Use

- Cultivated Field Crops
- Cultivated Other Crops
- Grazing

System Alignments

- Active
- Inactive
- Unverified
- Reservoir, Active
- Reservoir, Inactive
- Reservoir, Unverified

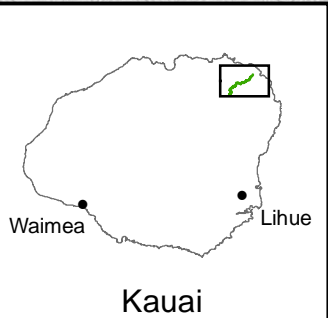
General Information

- Service Area
- Neighboring Alignments
- Isohyets

Hawaii State Department of Agriculture

Kaloko Irrigation Subsystem

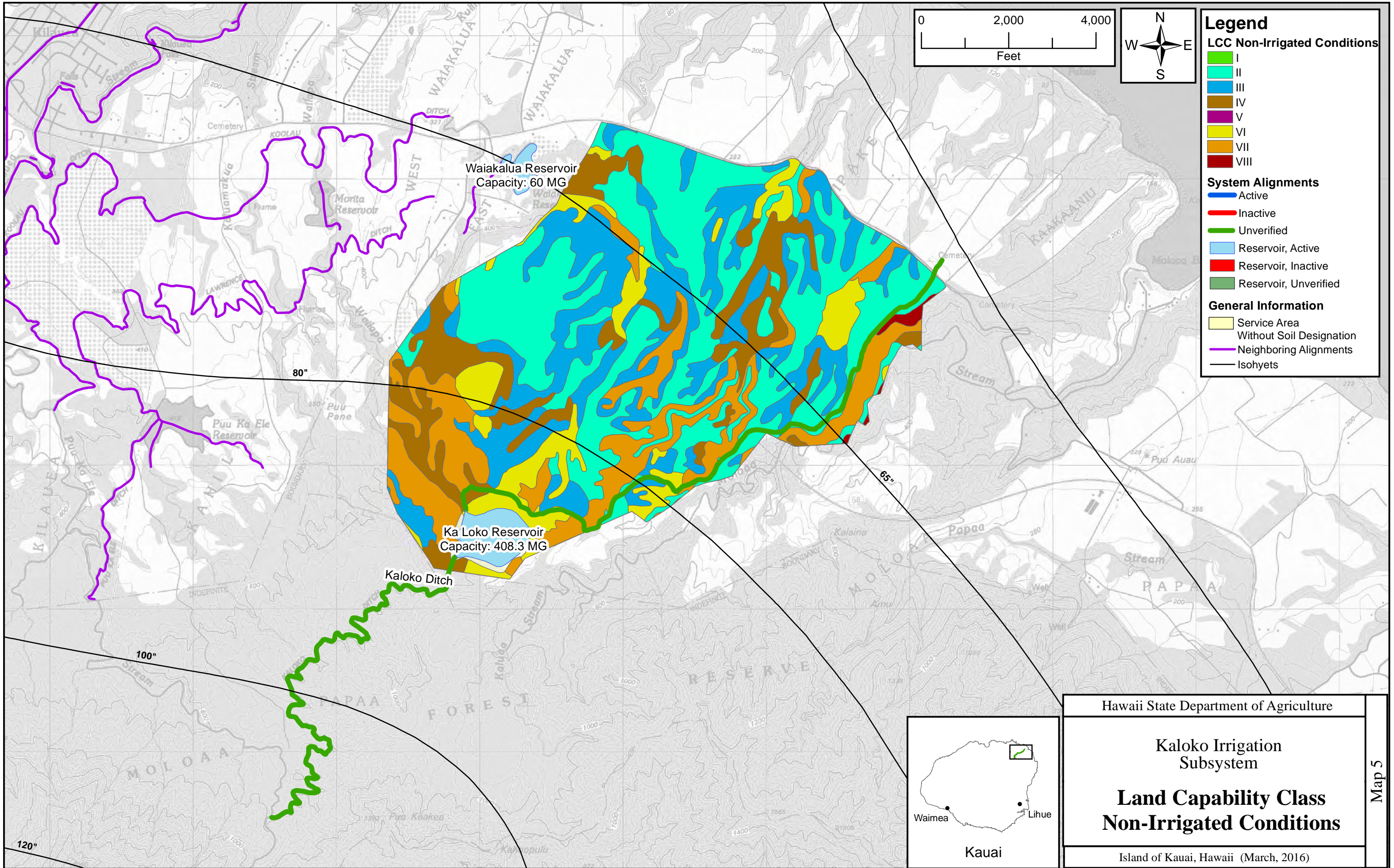
2014-2015 Land Use



Kauai

Island of Kauai, Hawaii (March, 2016)

Map 3



Legend

LCC Non-Irrigated Conditions

- I
- II
- III
- IV
- V
- VI
- VII
- VIII

System Alignments

- Active
- Inactive
- Unverified
- Reservoir, Active
- Reservoir, Inactive
- Reservoir, Unverified

General Information

- Service Area Without Soil Designation
- Neighboring Alignments
- Isohyets

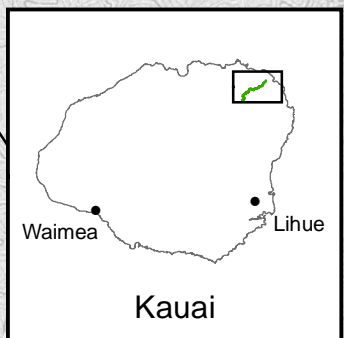
Hawaii State Department of Agriculture

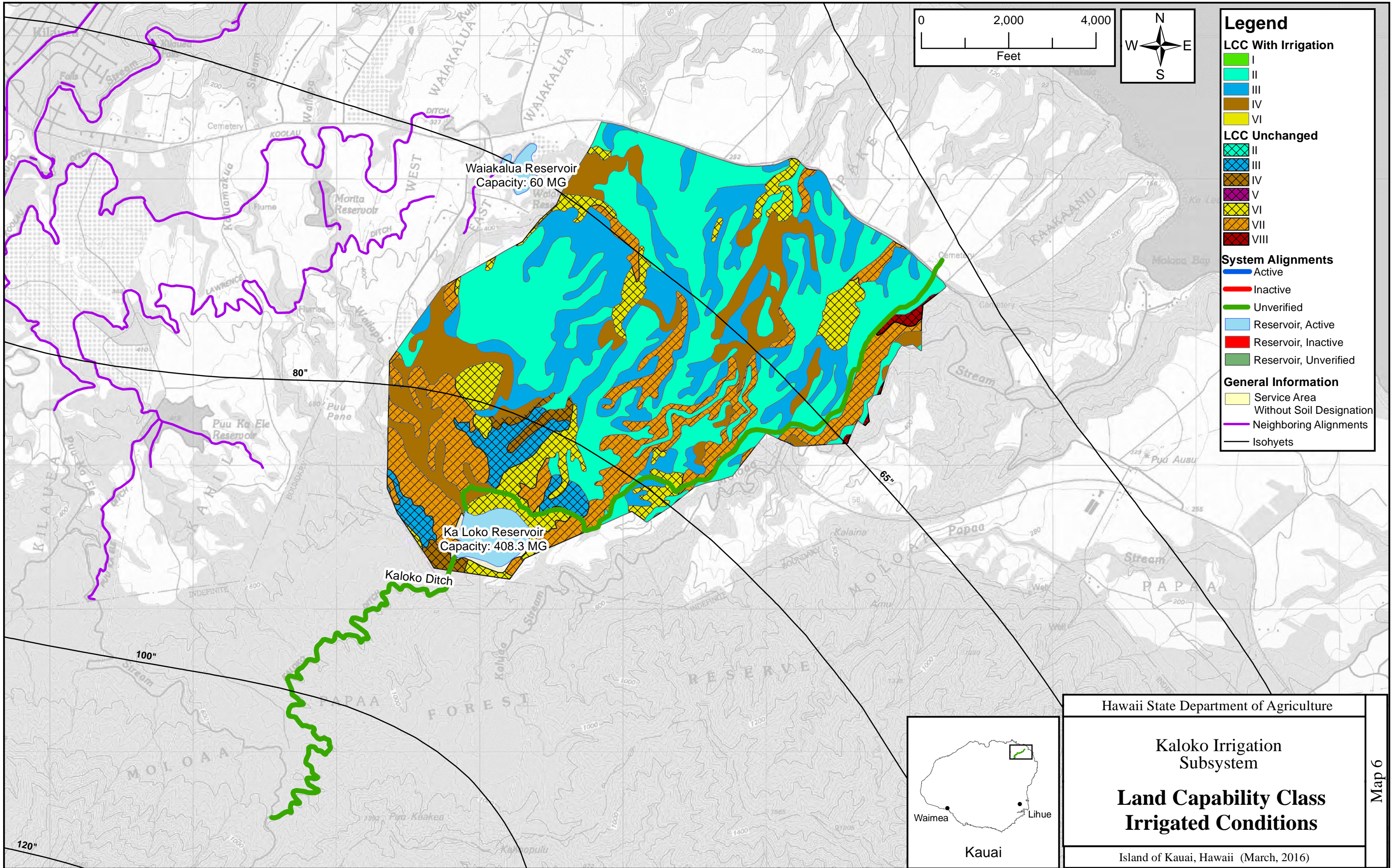
Kaloko Irrigation Subsystem

Land Capability Class Non-Irrigated Conditions

Island of Kauai, Hawaii (March, 2016)

Map 5





Legend

LCC With Irrigation

- I
- II
- III
- IV
- VI

LCC Unchanged

- II
- III
- IV
- V
- VI
- VII
- VIII

System Alignments

- Active
- Inactive
- Unverified
- Reservoir, Active
- Reservoir, Inactive
- Reservoir, Unverified

General Information

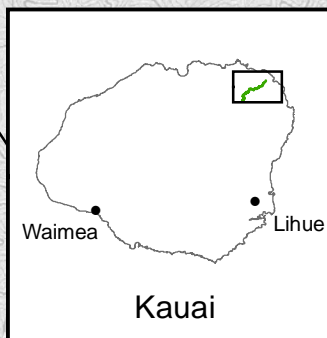
- Service Area Without Soil Designation
- Neighboring Alignments
- Isohyets

Hawaii State Department of Agriculture

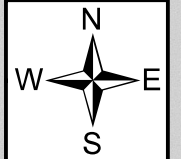
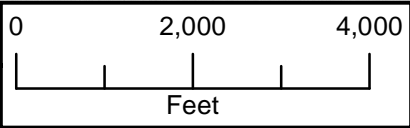
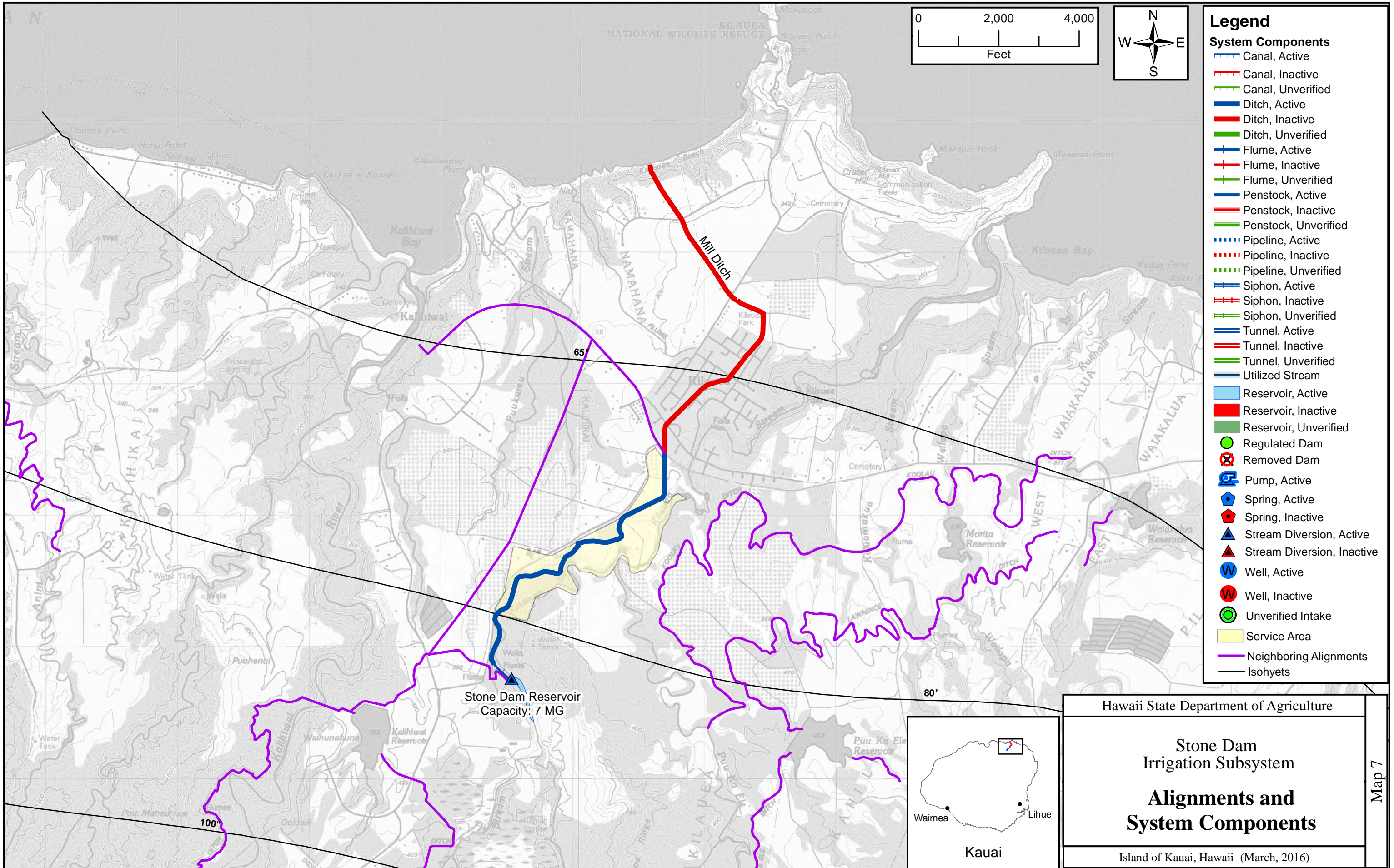
Kaloko Irrigation Subsystem

Land Capability Class Irrigated Conditions

Island of Kauai, Hawaii (March, 2016)

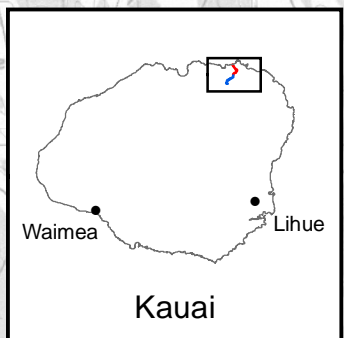


Map 6



- Legend**
- System Components**
- Canal, Active
 - Canal, Inactive
 - Canal, Unverified
 - Ditch, Active
 - Ditch, Inactive
 - Ditch, Unverified
 - + Flume, Active
 - + Flume, Inactive
 - + Flume, Unverified
 - Penstock, Active
 - Penstock, Inactive
 - Penstock, Unverified
 - Pipeline, Active
 - Pipeline, Inactive
 - Pipeline, Unverified
 - Siphon, Active
 - Siphon, Inactive
 - Siphon, Unverified
 - Tunnel, Active
 - Tunnel, Inactive
 - Tunnel, Unverified
 - Utilized Stream
 - Reservoir, Active
 - Reservoir, Inactive
 - Reservoir, Unverified
 - Regulated Dam
 - ⊗ Removed Dam
 - ⊕ Pump, Active
 - ⬠ Spring, Active
 - ⬠ Spring, Inactive
 - ▲ Stream Diversion, Active
 - ▲ Stream Diversion, Inactive
 - ⊙ Well, Active
 - ⊙ Well, Inactive
 - ⊙ Unverified Intake
 - Service Area
 - Neighboring Alignments
 - Isohyets

Stone Dam Reservoir
Capacity: 7 MG



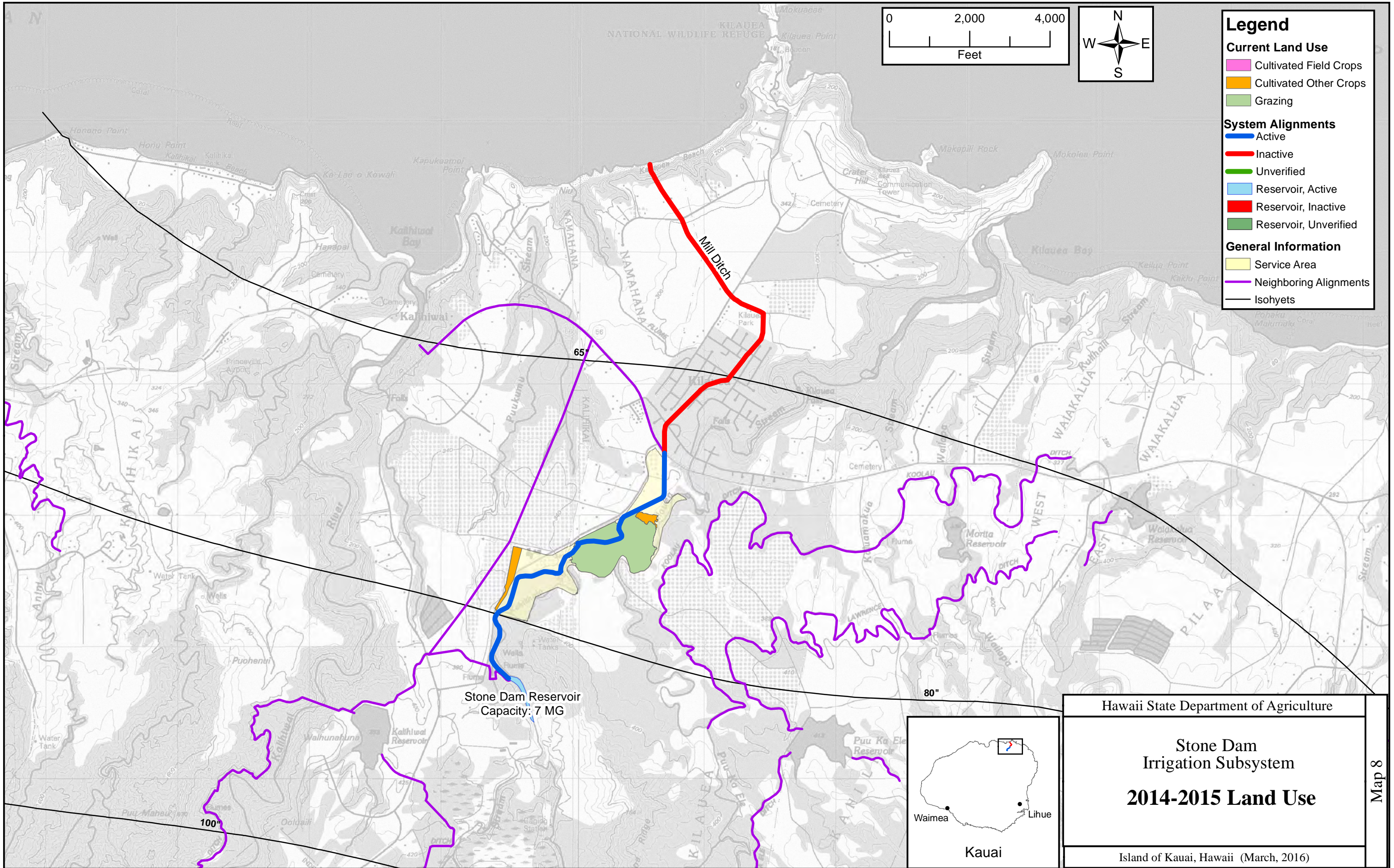
Hawaii State Department of Agriculture

**Stone Dam
Irrigation Subsystem**

**Alignments and
System Components**

Island of Kauai, Hawaii (March, 2016)

Map 7



Legend

Current Land Use

- Cultivated Field Crops
- Cultivated Other Crops
- Grazing

System Alignments

- Active
- Inactive
- Unverified
- Reservoir, Active
- Reservoir, Inactive
- Reservoir, Unverified

General Information

- Service Area
- Neighboring Alignments
- Isohyets

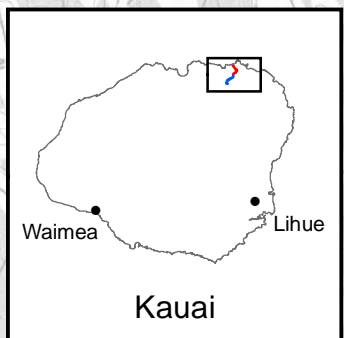
Stone Dam Reservoir
Capacity: 7 MG

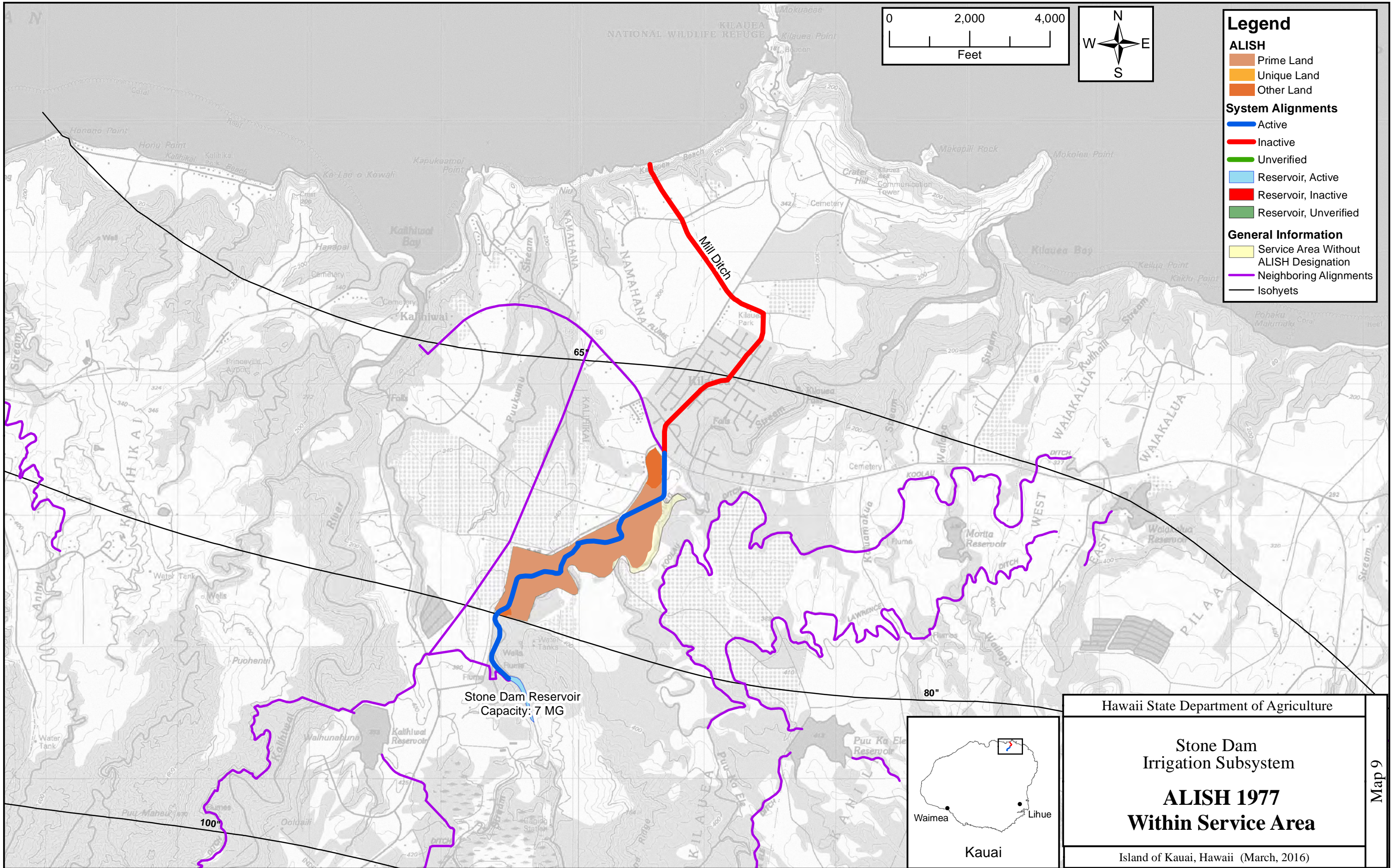
Hawaii State Department of Agriculture

**Stone Dam
Irrigation Subsystem**

2014-2015 Land Use

Island of Kauai, Hawaii (March, 2016)



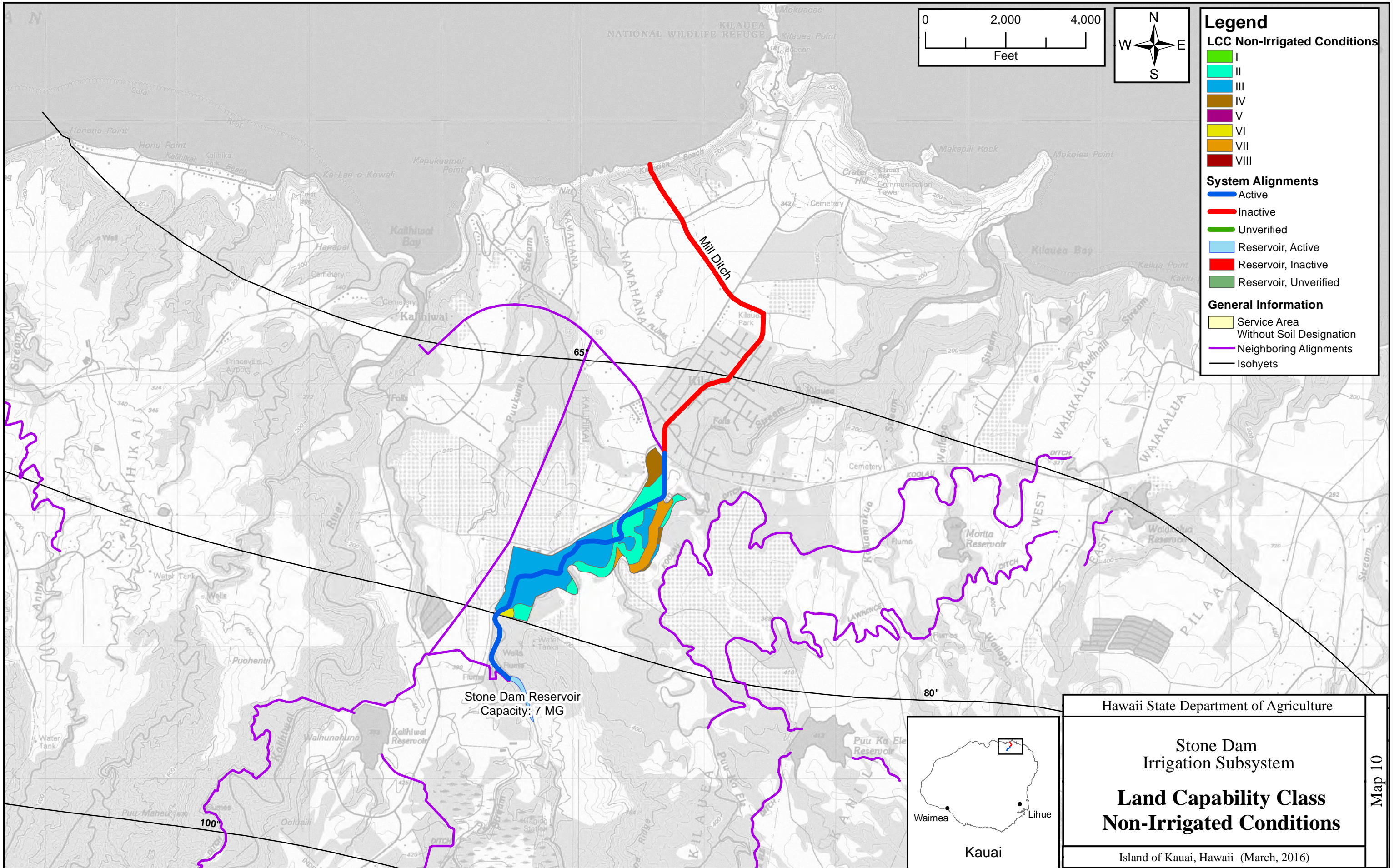


Hawaii State Department of Agriculture

**Stone Dam
Irrigation Subsystem**

**ALISH 1977
Within Service Area**

Island of Kauai, Hawaii (March, 2016)



Legend

LCC Non-Irrigated Conditions

- I
- II
- III
- IV
- V
- VI
- VII
- VIII

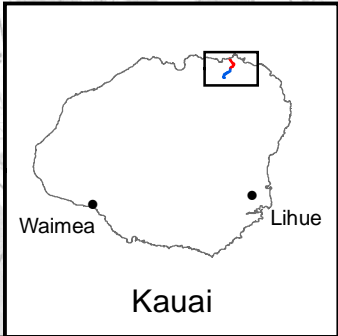
System Alignments

- Active
- Inactive
- Unverified
- Reservoir, Active
- Reservoir, Inactive
- Reservoir, Unverified

General Information

- Service Area Without Soil Designation
- Neighboring Alignments
- Isohyets

Stone Dam Reservoir
Capacity: 7 MG

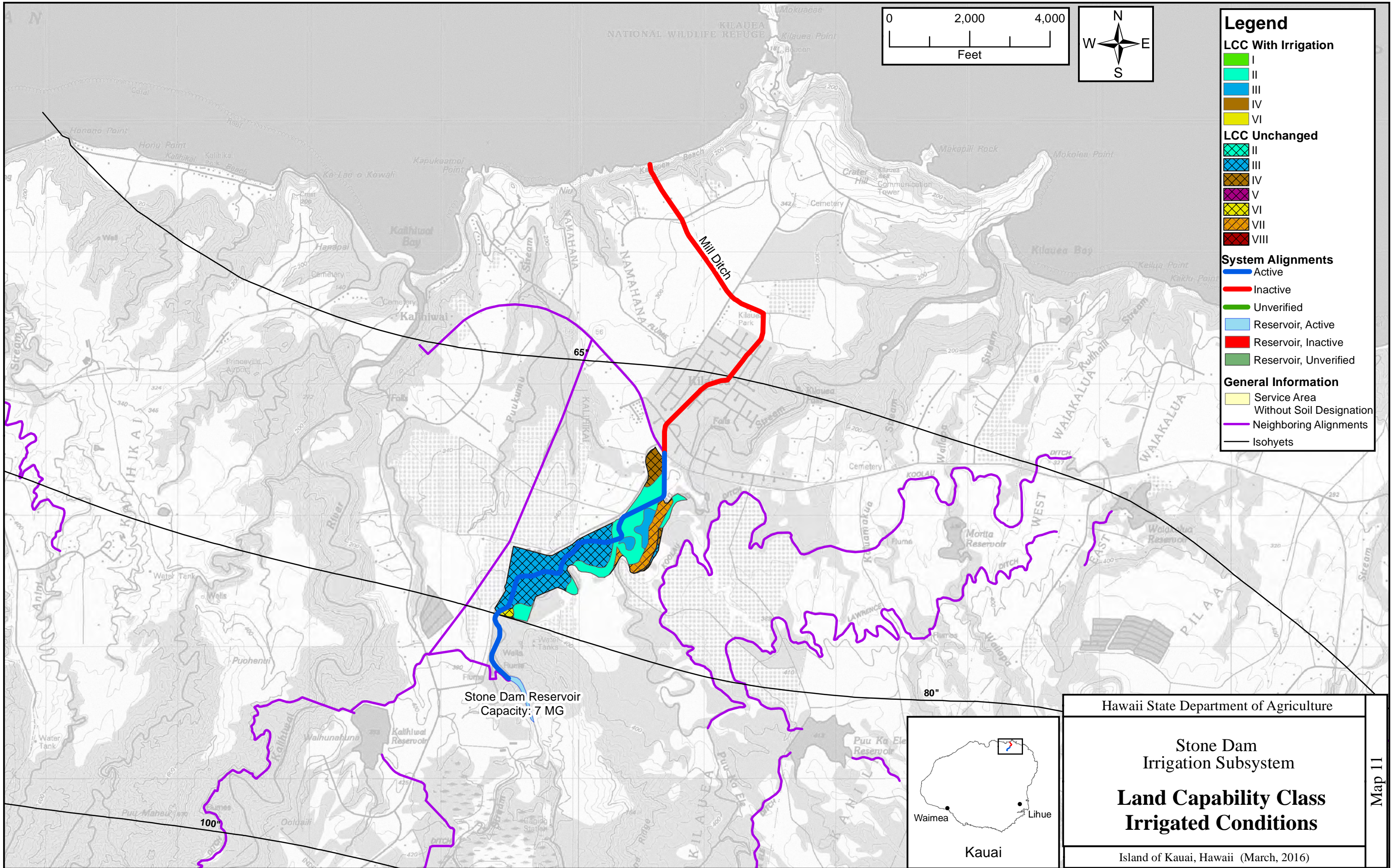


Hawaii State Department of Agriculture

Stone Dam
Irrigation Subsystem

**Land Capability Class
Non-Irrigated Conditions**

Island of Kauai, Hawaii (March, 2016)



Legend

LCC With Irrigation

- I
- II
- III
- IV
- VI

LCC Unchanged

- II
- III
- IV
- V
- VI
- VII
- VIII

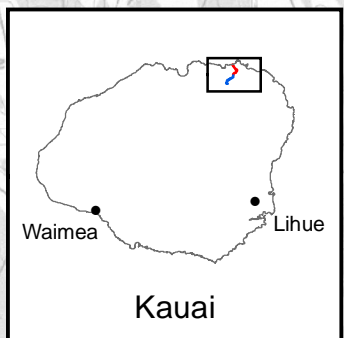
System Alignments

- Active
- Inactive
- Unverified
- Reservoir, Active
- Reservoir, Inactive
- Reservoir, Unverified

General Information

- Service Area Without Soil Designation
- Neighboring Alignments
- Isohyets

Stone Dam Reservoir
Capacity: 7 MG

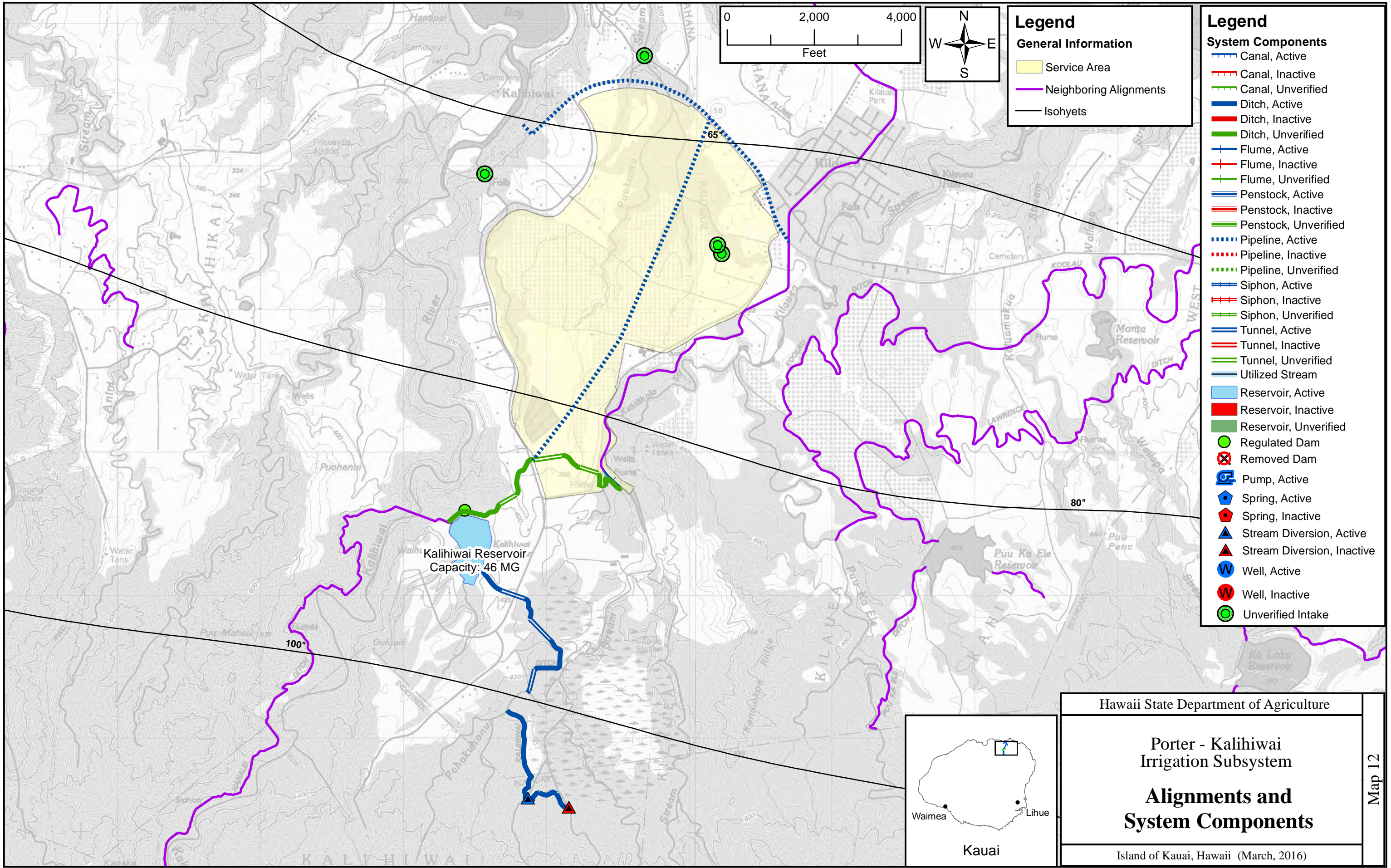


Hawaii State Department of Agriculture

Stone Dam
Irrigation Subsystem

**Land Capability Class
Irrigated Conditions**

Island of Kauai, Hawaii (March, 2016)



Legend

General Information

- Service Area
- Neighboring Alignments
- Isohyets

Legend

System Components

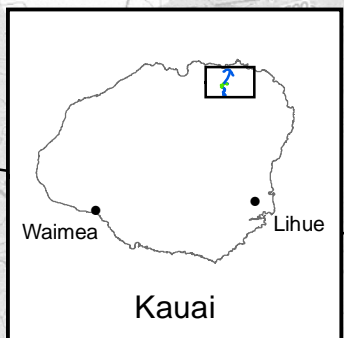
- Canal, Active
- Canal, Inactive
- Canal, Unverified
- Ditch, Active
- Ditch, Inactive
- Ditch, Unverified
- Flume, Active
- Flume, Inactive
- Flume, Unverified
- Penstock, Active
- Penstock, Inactive
- Penstock, Unverified
- Pipeline, Active
- Pipeline, Inactive
- Pipeline, Unverified
- Siphon, Active
- Siphon, Inactive
- Siphon, Unverified
- Tunnel, Active
- Tunnel, Inactive
- Tunnel, Unverified
- Utilized Stream
- Reservoir, Active
- Reservoir, Inactive
- Reservoir, Unverified
- Regulated Dam
- Removed Dam
- Pump, Active
- Spring, Active
- Spring, Inactive
- Stream Diversion, Active
- Stream Diversion, Inactive
- Well, Active
- Well, Inactive
- Unverified Intake

Hawaii State Department of Agriculture

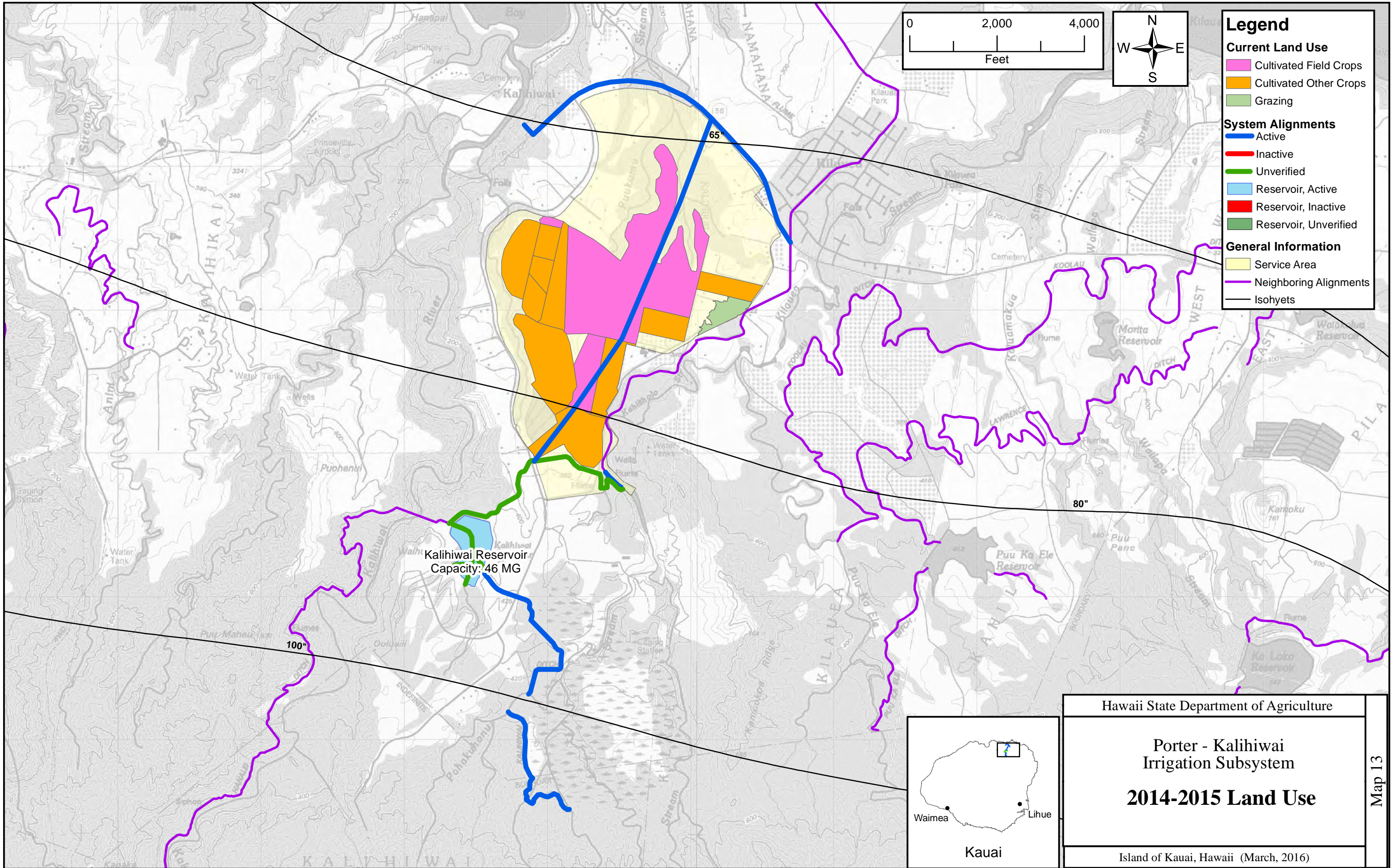
Porter - Kalihiwai
Irrigation Subsystem

**Alignments and
System Components**

Island of Kauai, Hawaii (March, 2016)



Map 12

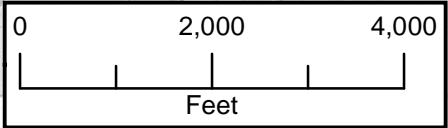
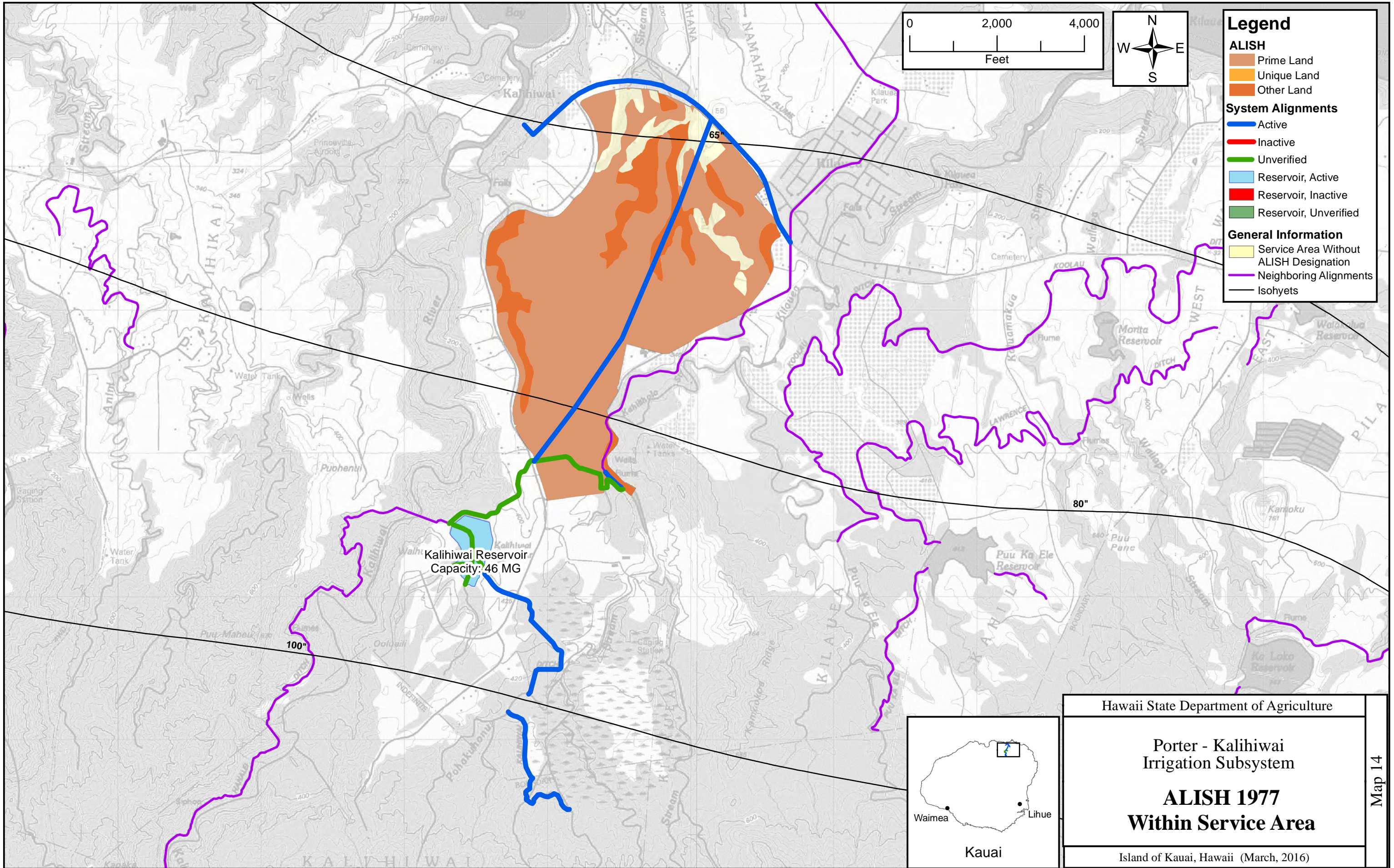


Hawaii State Department of Agriculture

Porter - Kalihiwai
Irrigation Subsystem

2014-2015 Land Use

Island of Kauai, Hawaii (March, 2016)



Legend

ALISH

- Prime Land
- Unique Land
- Other Land

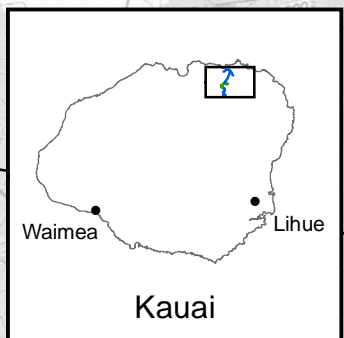
System Alignments

- Active
- Inactive
- Unverified
- Reservoir, Active
- Reservoir, Inactive
- Reservoir, Unverified

General Information

- Service Area Without ALISH Designation
- Neighboring Alignments
- Isohyets

Kalihiwai Reservoir
Capacity: 46 MG

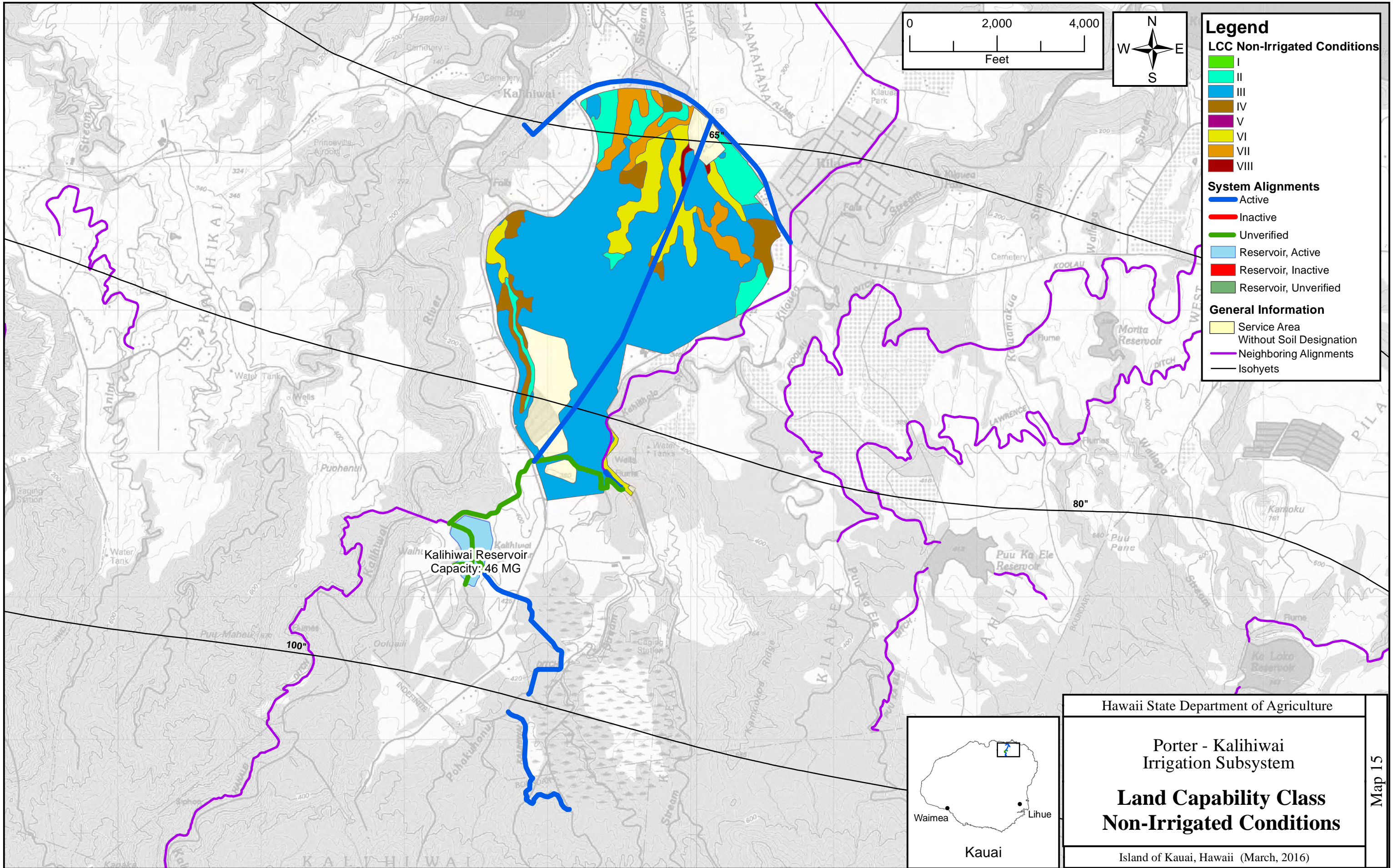


Hawaii State Department of Agriculture

Porter - Kalihiwai
Irrigation Subsystem

ALISH 1977
Within Service Area

Island of Kauai, Hawaii (March, 2016)



Legend

LCC Non-Irrigated Conditions

- I
- II
- III
- IV
- V
- VI
- VII
- VIII

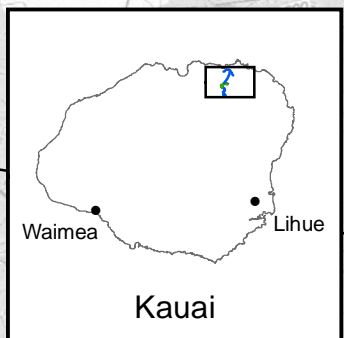
System Alignments

- Active
- Inactive
- Unverified
- Reservoir, Active
- Reservoir, Inactive
- Reservoir, Unverified

General Information

- Service Area Without Soil Designation
- Neighboring Alignments
- Isohyets

Kalihiwai Reservoir
Capacity: 46 MG



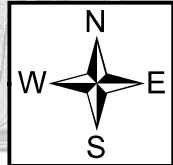
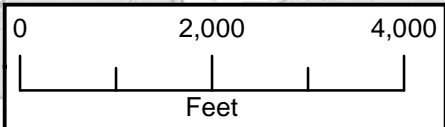
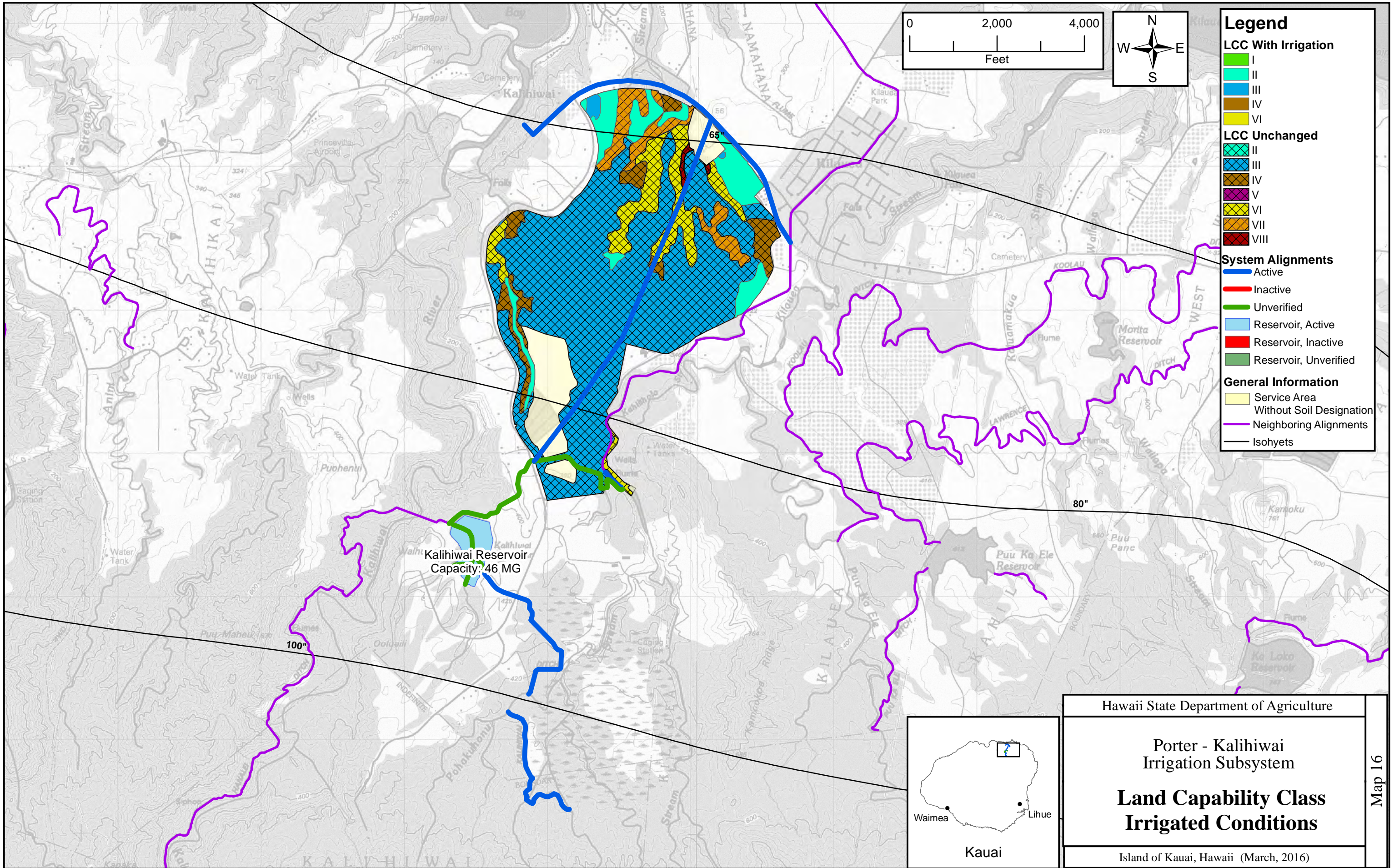
Hawaii State Department of Agriculture

Porter - Kalihiwai
Irrigation Subsystem

**Land Capability Class
Non-Irrigated Conditions**

Island of Kauai, Hawaii (March, 2016)

Map 15



Legend

LCC With Irrigation

- I
- II
- III
- IV
- VI

LCC Unchanged

- II
- III
- IV
- V
- VI
- VII
- VIII

System Alignments

- Active
- Inactive
- Unverified
- Reservoir, Active
- Reservoir, Inactive
- Reservoir, Unverified

General Information

- Service Area Without Soil Designation
- Neighboring Alignments
- Isohyets

Kalihiwai Reservoir
Capacity: 46 MG

Hawaii State Department of Agriculture

Porter - Kalihiwai
Irrigation Subsystem

**Land Capability Class
Irrigated Conditions**

Island of Kauai, Hawaii (March, 2016)

