

Kaloko-Honokōhau National Historical Park



Tammy Ann Duchesne, Superintendent

September 17, 2014

CWRM INVESTIGATION AND SITE VISIT

Overview

1. What is the NPS mandate?
2. Establishment of the Park
3. Purpose of this Park
4. Park Resources

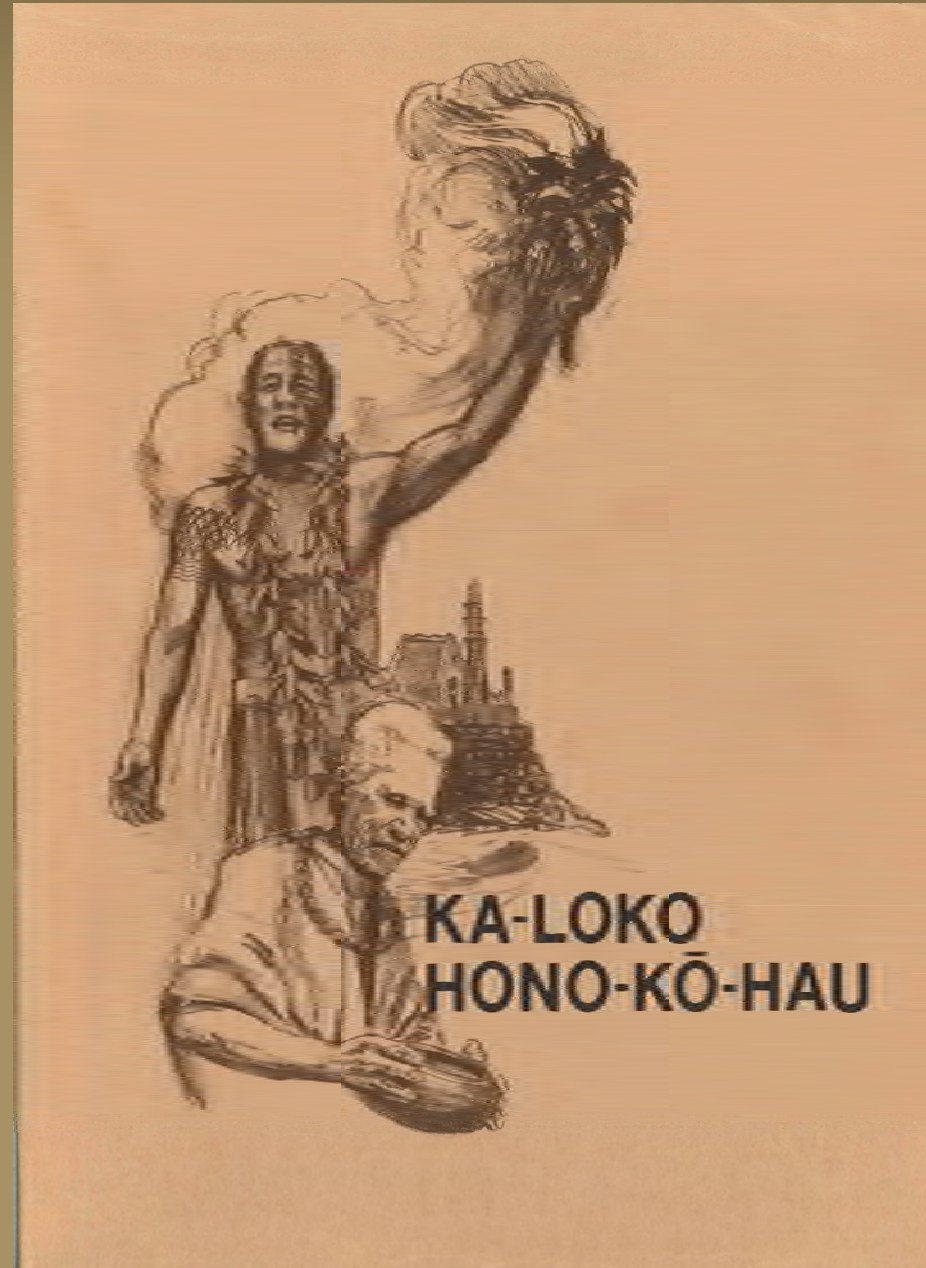
1. What is the NPS Mandate?

- The Federal Organic Act of 1916 established the NPS “...to conserve the scenery and the natural and historic objects and the wild life therein and to provide for the enjoyment of the same in such manner and by such means as will leave them **unimpaired** for the enjoyment of future generations.”
 - This means preserving and protecting the **land and water** of the NPS

2. Establishment of the Park

The park was established at the urging of the Native Hawaiian Community of Kona

Their vision was described in the Spirit Report



3. Purpose of this Park

“...provide a center for the preservation, interpretation, and perpetuation of traditional native Hawaiian activities and culture...”

Why wai?

“The Secretary shall consult with and may enter into agreements with other governmental entities and private landowners to establish adequate controls on air and water quality and the scenic and esthetic values of the surrounding land and water areas.”

Why wai?

“In consulting with and entering into any such agreements, the Secretary shall to the maximum extent feasible utilize the traditional **native Hawaiian ahupua`a** a concept of land and **water management.**”

4. Park Resources

■ Setting

- 596 acres marine waters
- 564 acres land
- Four ahupua`a



Cultural Landscape



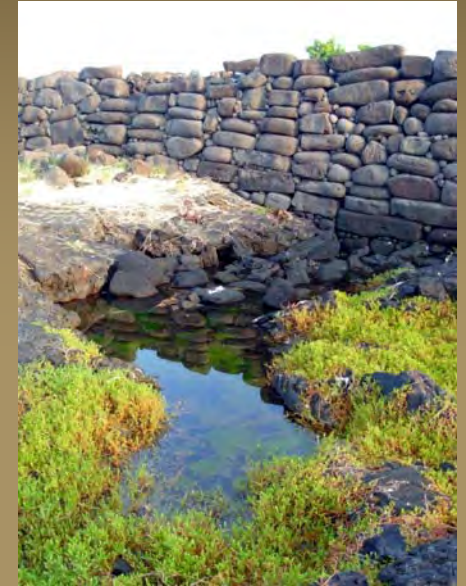
Cultural Resources

- Two fishponds
- A fishtrap
- Heiau
- House sites
- Raised Planters
- Petroglyphs
- Burial Sites



Natural Resources

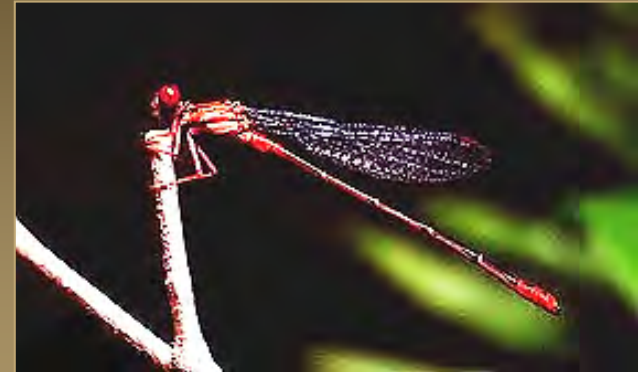
- Coastal terrestrial & marine habitats
- Wetlands
- Anchialine pool habitat
- Endemic & indigenous biota, 16 threatened, endangered and candidate species



Anchialine Pools



Opae`ula (*Metabetaus lohena*
and *Halocardinia rubra*)



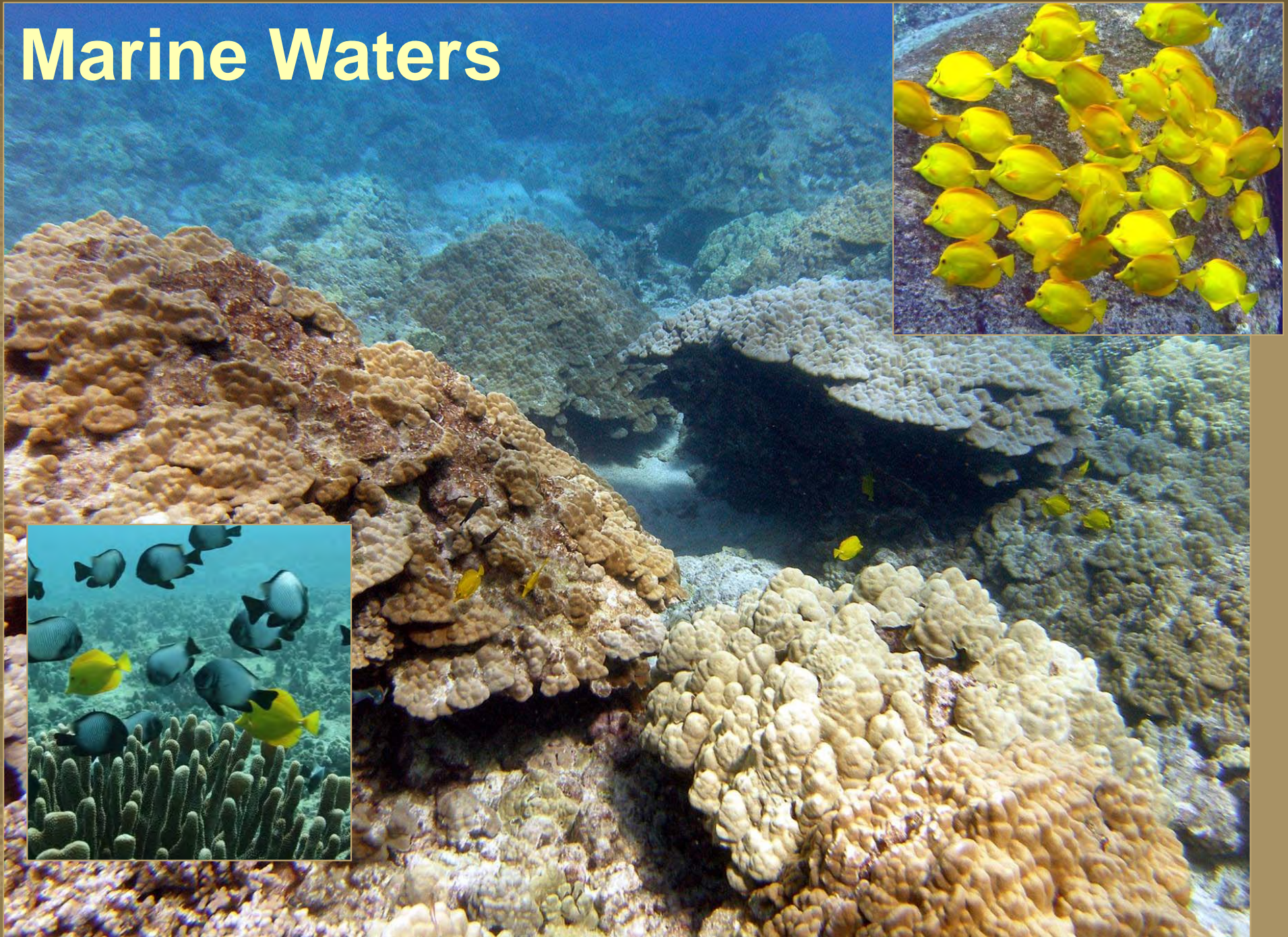
orange-black damselfly,
Megalagrion xanthomelas



Intertidal Zone



Marine Waters



Fishponds



What has the NPS been doing to ensure protection of resources?

- Talking story
 - Various groups for over six years
- Participated in Water Groups
 - Groundwater Working Group
 - Water Professionals Group
 - Kona Water Roundtable
- Participation in public processes
 - Comment on permits, EAs, EISs

In Summary

- **The National Park Service is mandated to proactively manage to prevent harm to public trust resources.**

Kaloko-Honokōhau National Historical Park

www.nps.gov/kaho



EXPERIENCE YOUR AMERICA™