

Exhibit 1(a)

Copy of Original Māhele Documents (LCA 3105) - Foreign Testimony

176

Land.

It is bounded, Maunaloa, by Cook's Land - Waialeale, by
 the Helelele's Land, Kāpapa, by Sijunpabachua's Land. This
 known, by Hanawa's Land.

Ch. 11. Hanawa

Ch. 11. Hanawa is a section of the Ch. 11. Hanawa is a section of 2 pieces in
 the Ch. 11. Hanawa. Kāpapa, Hanawa.
 Ch. 11. Hanawa is a section of land in
 " 2. " " " " "
 " 3. " " " " "
 " 4. " " " " " Hanawa.
 " 5. " " " " " Hanawa.
 This Ch. 11. Hanawa is a section of 2 pieces in 1822, when
 was the land in the days of Hanawa's Land. Ch. 11. Hanawa is a section

Ch. 12. Hanawa

Ch. 12. Hanawa is a section of the Ch. 12. Hanawa is a section of 2 pieces
 in Kāpapa, and one in Hanawa. Hanawa, Hanawa.
 Ch. 12. Hanawa is a section of land in Hanawa.
 " 2. " " " " "
 " 3. " " " " "
 " 4. " " " " "
 " 5. " " " " " Hanawa.
 This Ch. 12. Hanawa is a section of 2 pieces in 1822, when
 was the land in the days of Hanawa's Land. Ch. 12. Hanawa is a section

Exhibit 1(c)

Copy of Original Māhele Documents (LCA 3105) – Native Register

35

3104 Kaalamakule Ili aima o Ohia; ke
 palapala kuleana mo aima a one aia Ioi
 a me na kula. He hahi aku nei au ia oukou
 e na Iona houna kuleana, ke mo aima a
 one na Ioi a one hahi kula. He Kapupahu
 mai koe aima, a make ke iu o Kapupahu
 He hoi mo koe komihiki i kua amau aua. He i
 33 Ioi. O na palana o koe mo ke kahawai
 ma ka houna, ma ke komihana, ke mo aima
 o Tahapau, ma ka Akahi ke pali, ke mo
 aima ma ka hihina mo Kawalea
 Aia ma ka ili aima o Koko ma kakahe
 mau Ioi ia Iona, He hahi mai, Aole akaka
 loa iaie ka makahiki i loa mai
 Waikapu Maui Nāi ma Kaalamakule
 Januari 3^o 1848

Ahepua Waikapu

3105 Kaiaa Ili aima o Pūpūli Iona, He hahi
 ke nei au ia oukou i koe kuleana aima He I.
 Kapupahu Iona mai koe aima. He ili aima o
 koe mo koe mai kahiko mai mo a hiki i kua
 amaua e mohe nei au, Aole oae au i kahea
 ia, ke ouhu mohe nei mo wau. Oia ka iua o wa
 hōke o koe kuleana aima o I. Kapupahu
 a one Kama Nāi ma Kaiaa
 Waikapu Maui Ioh 25 1848

3106 Kahuanaiara Ili aima o Kapaia
 Aolia maikai oukou e na Iona houna ke
 leana aima. He hahi ke nei au ia oukou

Exhibit 1(d)
Royal Patent Grant (LCA 3105)

101
01/01

HELE ^{21/11/11}
PALAPALA SILA NUI.
 A KE ALII, NAMUHI O KA OLELO A KA POU MOONA KULEANA

SI KA MEN, ua hoohele ao Luna Huona i ao kupa kuleana oia i ka olelo, he kuleana olelo he
Maui (Kuleana Hele, 2105)

ma ka Aho Alodie Boko o kahi i oleloia maiaia.

Naiaia, na keia Palapala Sila Nui, he kuleana olelo o Kamehameha IV, he Alii nui a ka Ahua
 i kupa kuleana i hoohele ai maiaia o ke Hoohele Pao Aina, i ao kupa a pau, i kahi la oona ka, a
 na hoohele maiaia hepe olelo, na hoohele olelo oia ma ke Aho Alodie a *Maui*
 i kahi wahi a pau loa ma *Maui*

ma ka moku o *Maui* paei na mokuna.

Apauna i *Pahoa* *Maui* i *Maui* *Maui* *Maui*
 O kuleana maiaia maiaia kahi *Maui* i *Maui* *Maui* *Maui* *Maui* *Maui*
Maui 179 *Maui* a *Maui* *Maui* *Maui*
Maui 179 *Maui* *Maui* *Maui*
Maui 179 *Maui* *Maui* *Maui*
Maui 179 *Maui* *Maui* *Maui*
Maui 179 *Maui* *Maui* *Maui*
Maui 179 *Maui* *Maui* *Maui*
Maui 179 *Maui* *Maui* *Maui*
Maui 179 *Maui* *Maui* *Maui*
Maui 179 *Maui* *Maui* *Maui*
Maui 179 *Maui* *Maui* *Maui*
 i kahi a hooheleia.

Maui

Apauna i *Pahoa* *Maui* i *Maui* *Maui* *Maui*
 O kuleana maiaia maiaia kahi *Maui* i *Maui* *Maui* *Maui* *Maui* *Maui*
 Oia i kahi a hooheleia.

Apauna 179 *Maui* *Maui* *Maui* *Maui*
Apauna 179 *Maui* *Maui* *Maui* *Maui*
Apauna 179 *Maui* *Maui* *Maui* *Maui*
Apauna 179 *Maui* *Maui* *Maui* *Maui*
Apauna 179 *Maui* *Maui* *Maui* *Maui*
Apauna 179 *Maui* *Maui* *Maui* *Maui*
Apauna 179 *Maui* *Maui* *Maui* *Maui*
Apauna 179 *Maui* *Maui* *Maui* *Maui*
 i kahi a hooheleia.

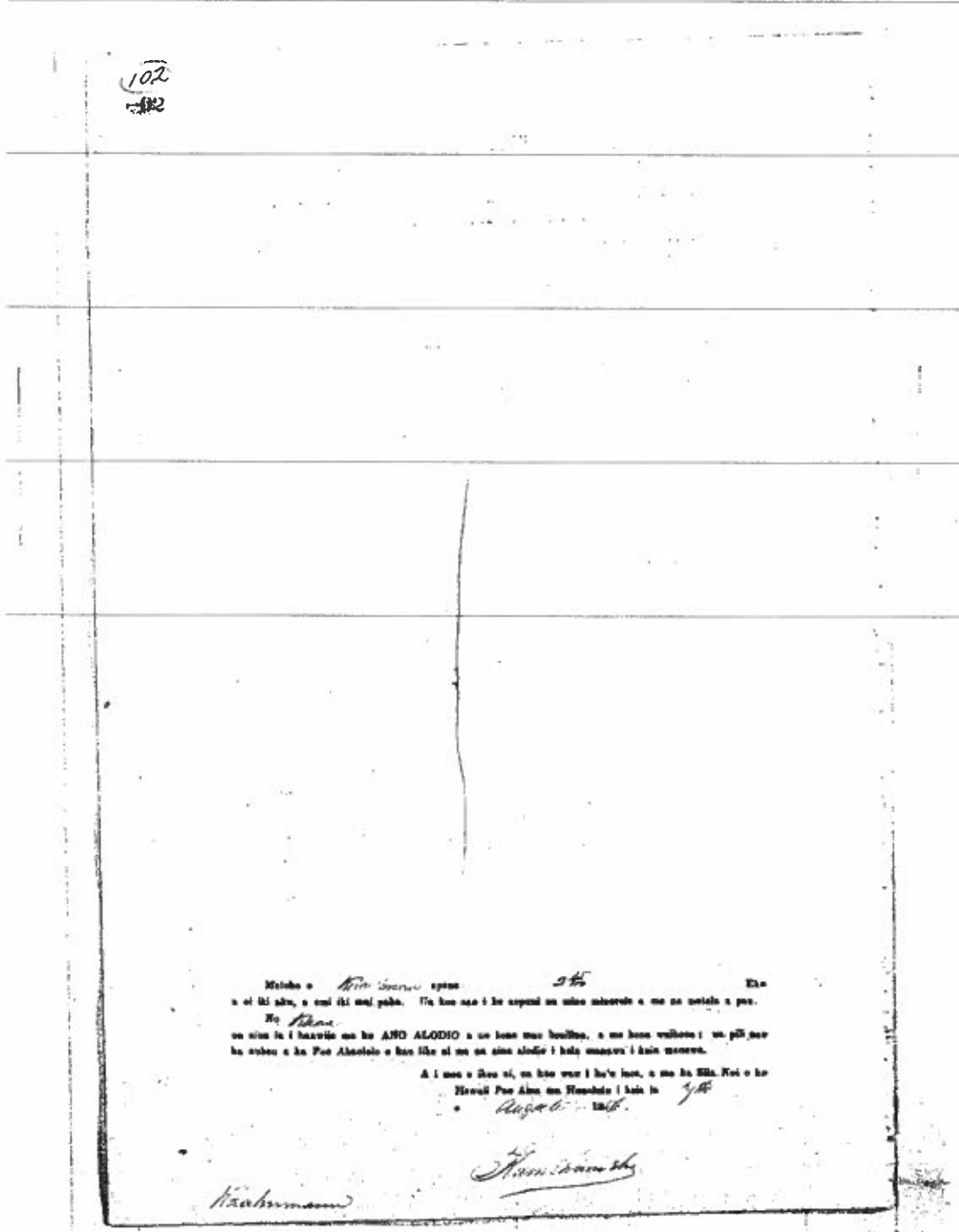
Maui

Apauna i *Pahoa* *Maui* i *Maui* *Maui* *Maui*
 O kuleana maiaia maiaia kahi *Maui* i *Maui* *Maui* *Maui* *Maui* *Maui*
 Oia i kahi a hooheleia.

Apauna 179 *Maui* *Maui* *Maui* *Maui*
Apauna 179 *Maui* *Maui* *Maui* *Maui*
Apauna 179 *Maui* *Maui* *Maui* *Maui*
Apauna 179 *Maui* *Maui* *Maui* *Maui*
Apauna 179 *Maui* *Maui* *Maui* *Maui*
Apauna 179 *Maui* *Maui* *Maui* *Maui*
Apauna 179 *Maui* *Maui* *Maui* *Maui*
 i kahi a hooheleia.

Maui

Exhibit 1(d) continued
Royal Patent Grant (LCA 3105)



102
182

Maheo a *Alan Birnie* ¹⁸² Eia
a oi ki aha, a eia ki mai pahe. He mea nui i ke aupuni no kumu kumu a me no maheo a pa.
No *Alan*
no aha he i haawia ma he AHO ALODIO a no kumu ma he kumu, a no kumu waiheo i no pi ma
he kumu a he Pae Alaalalo a he kumu a he kumu aha i haku maheo i kumu maheo.
A i mea a heo oi, no kumu i he kumu, a ma he Eia. Koi o he
Heiwa Pae Alan ma Heiwa i kumu i
* *Alan Birnie* 182

Alan Birnie

BIRNIE, ALAN
TMK #: 3-5-012-010
WATER USE PERMIT APPLICATION - EXISTING USE

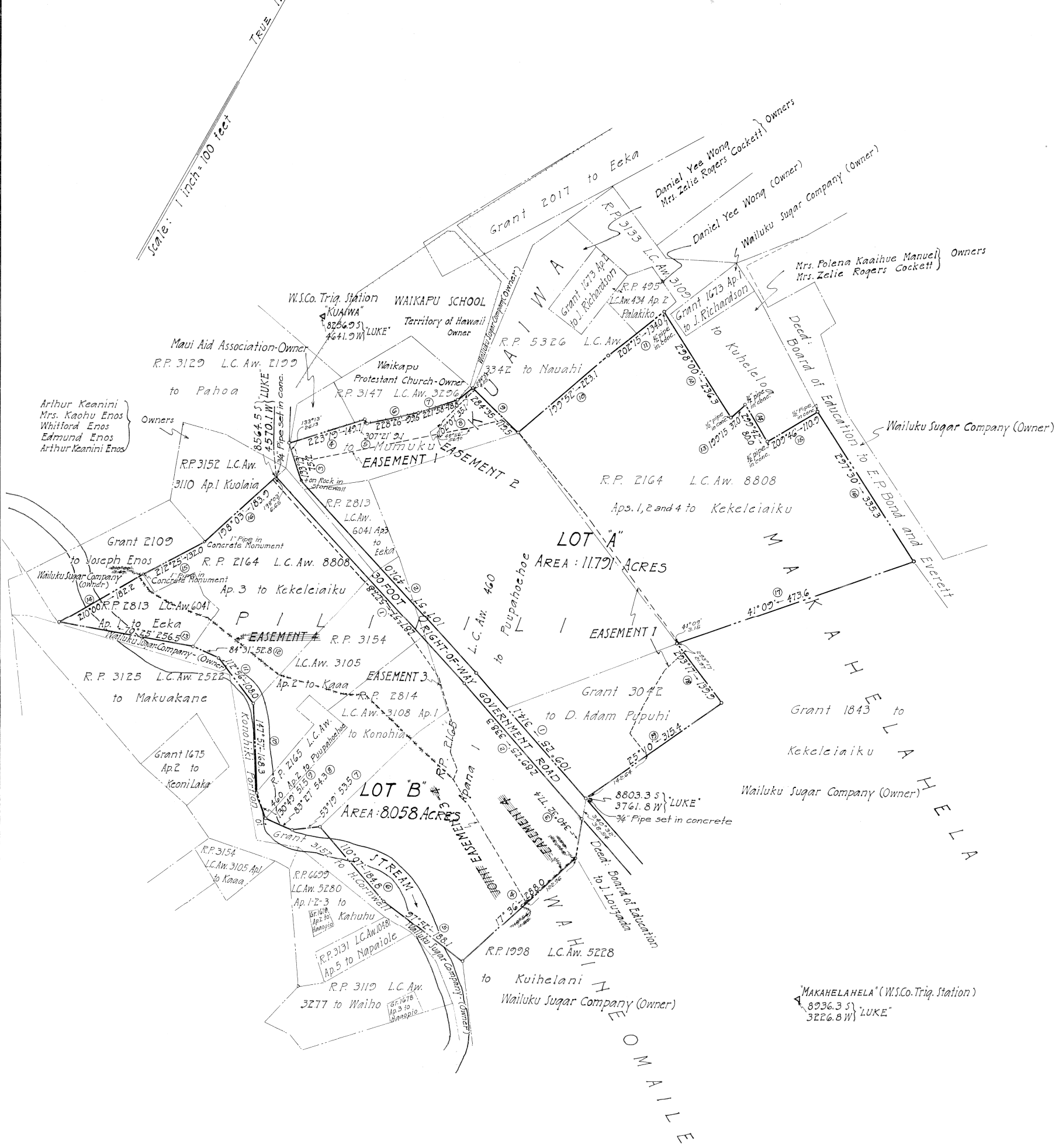
Exhibit 3 (a)
TMK of relevant parcel highlighted (zoomed out)



TERRITORY OF HAWAII
 MAP AND DESCRIPTION WITH APPLICATION 1315

ZELIE ROGERS COCKETT - APPLICANT

LAND SITUATED AT PILIPILI, KUA IWA AND MAKAHELAHELA - WAIKAPU - DISTRICT OF WAILUKU,
 MAUI T. H.



LOT 'A'

Being all of Grant 3042 to D. Adam Pupuhi, the northerly portion of R.P. 2165, L.C. Aw. 460, Apana 1 to Puupahoehoe, a portion of R.P. 2813, L.C. Aw. 6041, Apana 3 to Eeka and a small portion of R.P. 3154, L.C. Aw. 3105, Apana 2 to Kaaa, the easterly portion of R.P. 3147, L.C. Aw. 3296 to Mumuku and all of R.P. 2164, L.C. Aw. 8808, Apanas 1, 2 and 4 to Kakeleiaiku.

AREA: 11.791 ACRES

LOT 'B'

Being the southerly portion of R.P. 2165, L.C. Aw. 460, Apana 1 to Puupahoehoe, R.P. 2814, L.C. Aw. 3108, Apana 1 to Konohia, all of R.P. 2165, L.C. Aw. 460, Apana 2 to Puupahoehoe, a portion of R.P. 3154, L.C. Aw. 3105, Apana 2 to Kaaa, a portion of R.P. 2164, L.C. Aw. 8808, Apana 3 to Kakeleiaiku and all of R.P. 2813, L.C. Aw. 6041, Apana 1 to Eeka.

AREA: 8.058 ACRES

Lot 'A' is subject to Easement 1, a six (6) foot ditch right-of-way being an ancient auwai now used by the Applicant and the Wailuku Sugar Company for irrigation purposes, as shown on this map or plan as Easement 1.

Lot 'A' is also subject to Easement 2, a six (6) foot ditch right-of-way being another branch of the ancient auwai now used by the Applicant and others for irrigation purposes, as shown on this map or plan as Easement 2.

Lot 'B' is subject to Easement 3, a six (6) foot ditch right-of-way being an ancient auwai now used by the Applicant and the Wailuku Sugar Company for irrigation purposes, as shown on this map or plan as Easement 3.

~~Lot 'B' is also subject to Easement 4, being a three (3) foot easement for the Wailuku Sugar Company's domestic water supply line, as shown on this map or plan as Easement 4.~~

This map is from an actual survey on the ground made by, and under the direct supervision of the undersigned, between the dates October 20, 1938 and May 22, 1939, and may be checked by the Territorial Surveyor with my Field Book Number 5, Calculation Folder 7.



Robert P. Bruce
 Registered Professional Surveyor
 Certificate Number 248-5
 Wailuku, Maui, T.H.

Scale: 1 inch = 100 Feet
 Wailuku, Maui, T.H.
 May 23, 1939

Zelie Rogers Cockett Applicant

I hereby certify that the description of survey and map hereon have been examined and checked as to form and mathematical correctness, but not on the ground, and the same have been found to be in accord.
 Honolulu, T.H.
 Jan. 18, 1941.

Surveyor, Territory of Hawaii.

I hereby certify that Decree of Registration dated December 28, 1945, and numbered 1524 has issued to Zelie Rogers Cockett covering the land described hereon, and that Owner's Certificate of Title No. 33893 has been transcribed therefrom.

Easement 4 as shown hereon has been deleted by Order of the Judge of the Land Court dated December 16, 1965.
 Honolulu, Hawaii
 December 16, 1965

State Land Surveyor