



**Commission on Water Resource Management**

**Kauai Briefing – 4/28/15**

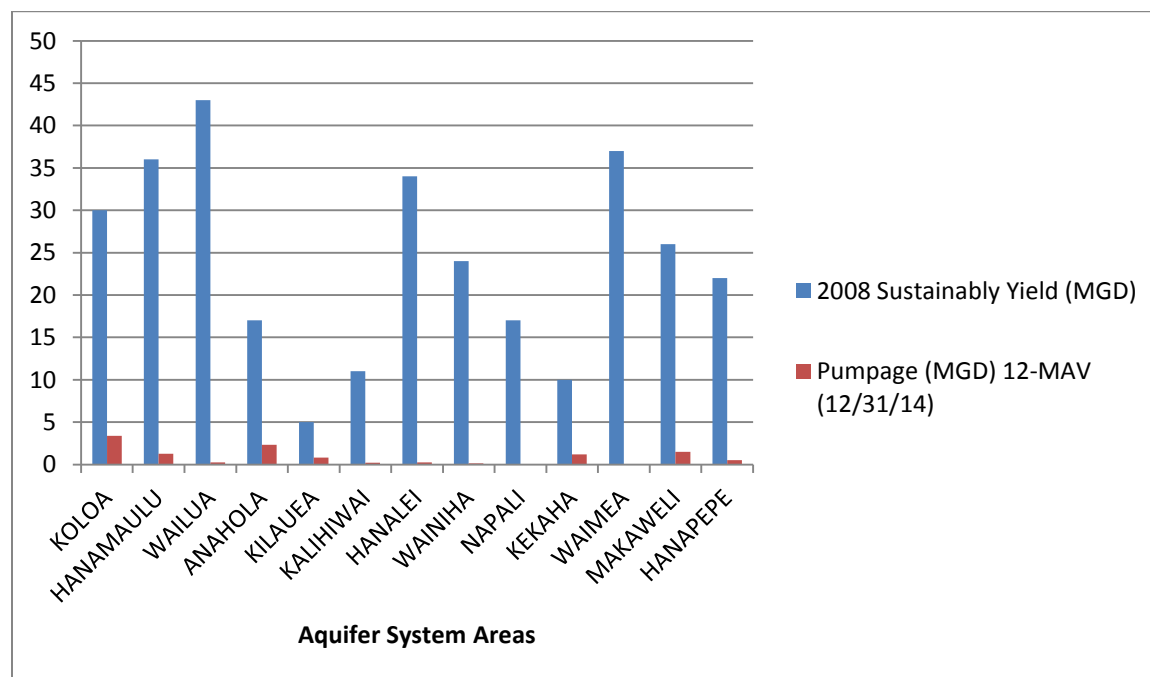
Existing Ground Water Use by Aquifer System as of **December 2014**

<b>Aquifer System Areas</b>	<b>2008 Sustainably Yield (MGD)</b>	<b>Pumpage (MGD) 12-MAV (12/31/14)</b>	<b>% of SY</b>
KOLOA	30	3.377	11%
HANAMAULU	36	1.267	4%
WAILUA	43	0.262	1%
ANAHOLA	17	2.319	14%
KILAUEA	5	0.832	17%
KALIHAIWAI	11	0.218	2%
HANALEI	34	0.256	1%
WAINIHA	24	0.149	1%
NAPALI	17	0	0%
KEKAHA	10	1.2	12%
WAIMEA	37	0.044	0%
MAKAWELI	26	1.511	6%
HANAPEPE	22	0.509	2%

MGD: Million of Gallons per Day

SY: Sustainable Yield

12-MAV: 12-month moving average of water use

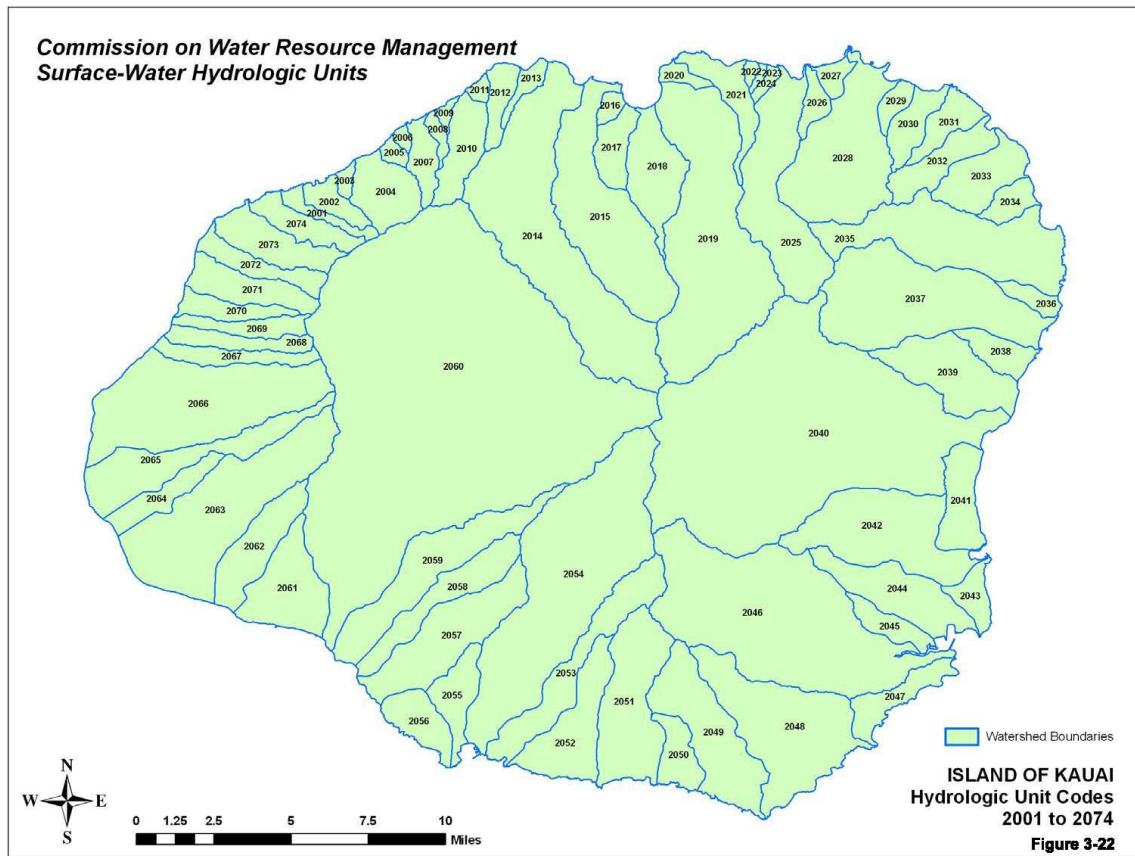






**Commission on Water Resource Management**

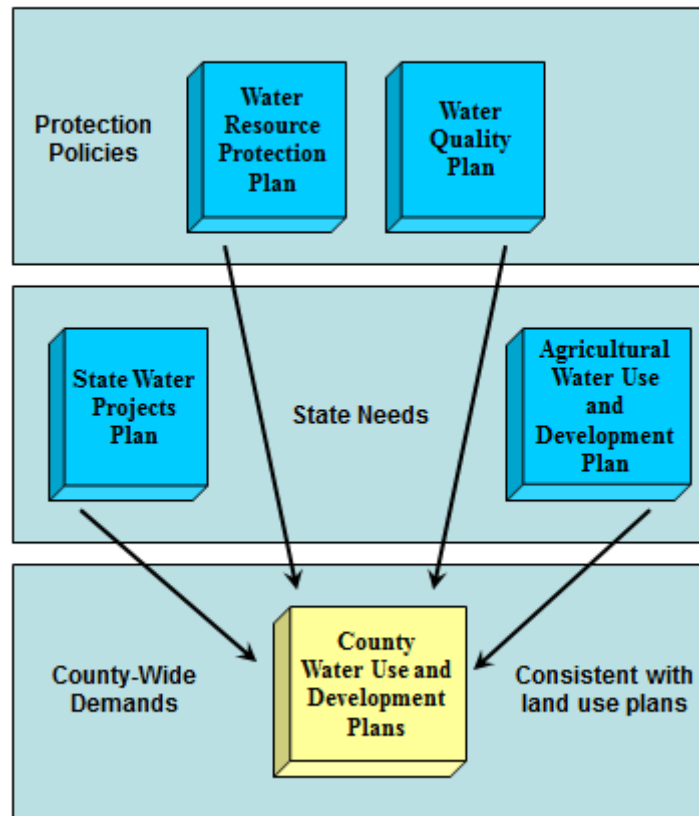
**Kauai Briefing – 4/28/15**



Total # of registered diversions (2-27-15): 292



## Hawaii Water Plan Components



The Hawaii Water Plan (HWP) is intended to serve as a continuing long-range guide for water resource management.

The HWP consists of five major components plans identified as the: 1) Water Resource Protection Plan; 2) Water Quality Plan; 3) State Water Projects Plan; 4) Agricultural Water Use and Development Plan; and 5) County Water Use and Development Plans. They are explained further below.

- **Water Resource Protection Plan (WRPP)**
  - Prepared by the Commission on Water Resource Management
  - Protects and sustains statewide groundwater and surface water resources, watersheds, and natural stream environments.
  - Inventories all the Commission’s management and protection practices
  - Last updated in 2008
  - Currently being updated



## Commission on Water Resource Management

Kauai Briefing – 4/28/15

- **Water Quality Plan (WQP)**
  - Prepared by the Department of Health
  - Protects the public health and sensitive ecological systems by preserving, protecting, restoring and enhancing the quality of ground- and surface-waters throughout the State
  - Last updated in 1990
  - Currently being updated
  -
- **State Water Projects Plan (SWPP)**
  - Prepared by the DLNR’s Engineering Division
  - Provides a framework for planning and implementation of water development programs to meet projected water demands for State projects
  - Last updated in 2003
  - Currently being updated
- **Agricultural Water Use and Development Plan (AWUDP)**
  - Prepared by the Hawaii Department of Agriculture
  - Develops a long-range management plan that assess state and private agricultural water use, supply, and irrigation water systems
  - Last updated in 2004
  - Currently being updated
- **County Water Use and Development Plans (WUDP)**
  - Prepared by each of the four counties
  - Sets forth the allocation of water to land use through the development of policies and strategies to guide the County in its planning, management, and development of water resources to meet projected demands
  - Kauai County WUDP last updated in 1990
    - Currently being updated
  - Maui County WUDP last updated in 1990
    - Lanai Island updated in 2011
    - Maui Island update in progress
  - Hawaii County WUDP last updated in 2011
    - Keauhou and Waimea Aquifer System Area updates in progress



## Commission on Water Resource Management

### Kauai Briefing – 4/28/15

- The City and County of Honolulu WUDP last updated in 1990
  - Koolau Loa and Waianae Districts updated in 2011
  - Koolau Poko District Updated in 2012
  - North Shore, Ewa, and Central Oahu District updates in progress