

# Wireline Core Drilling At Humu'ula

- ❖ Why
- ❖ How
- ❖ Future

Donald Thomas  
Center for the Study of Active Volcanoes  
University of Hawaii



Mauna Kea

Mauna Loa

HSDP 2

Subaerial lavas

Current sea level

Hilo Bay

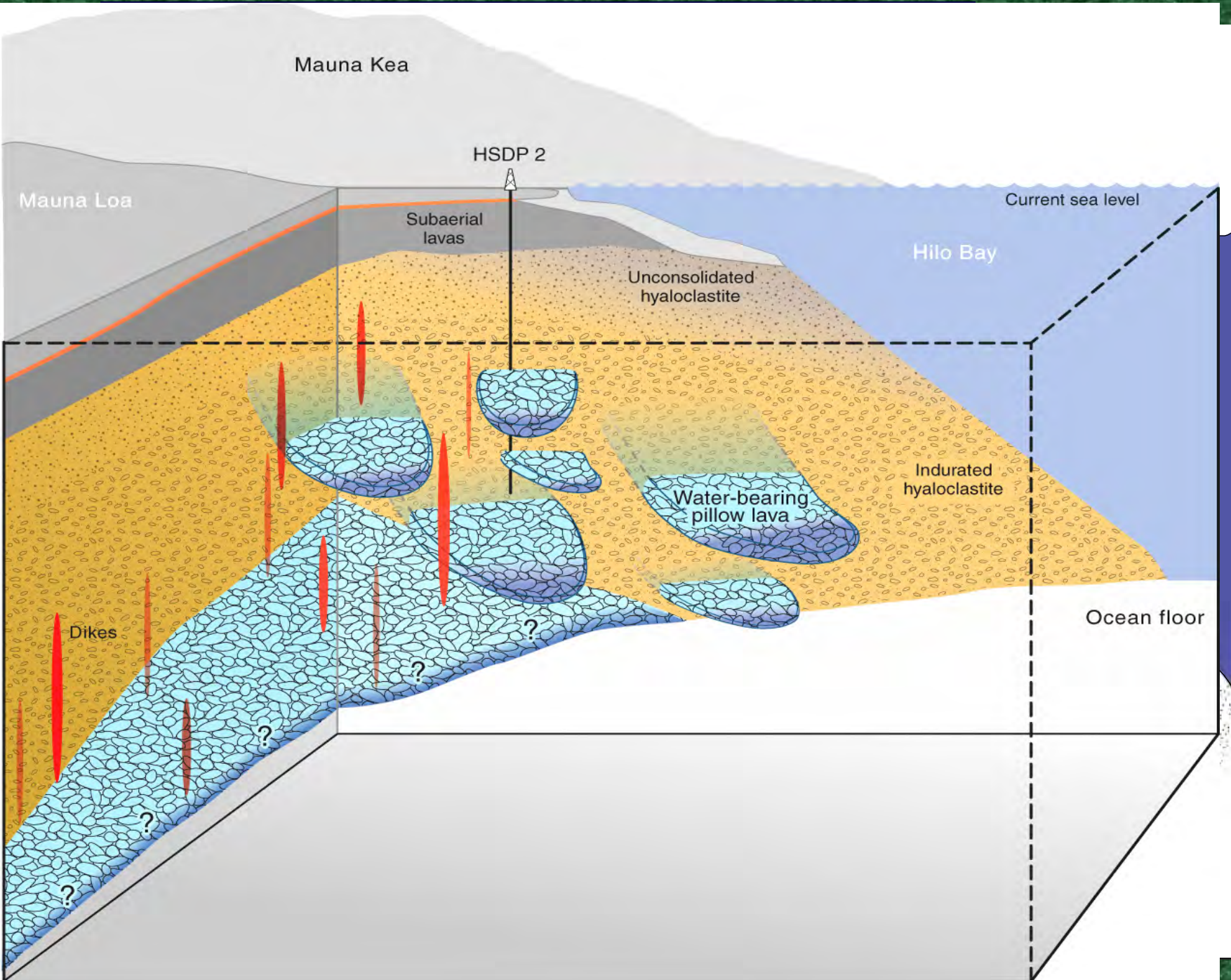
Unconsolidated  
hyaloclastite

Indurated  
hyaloclastite

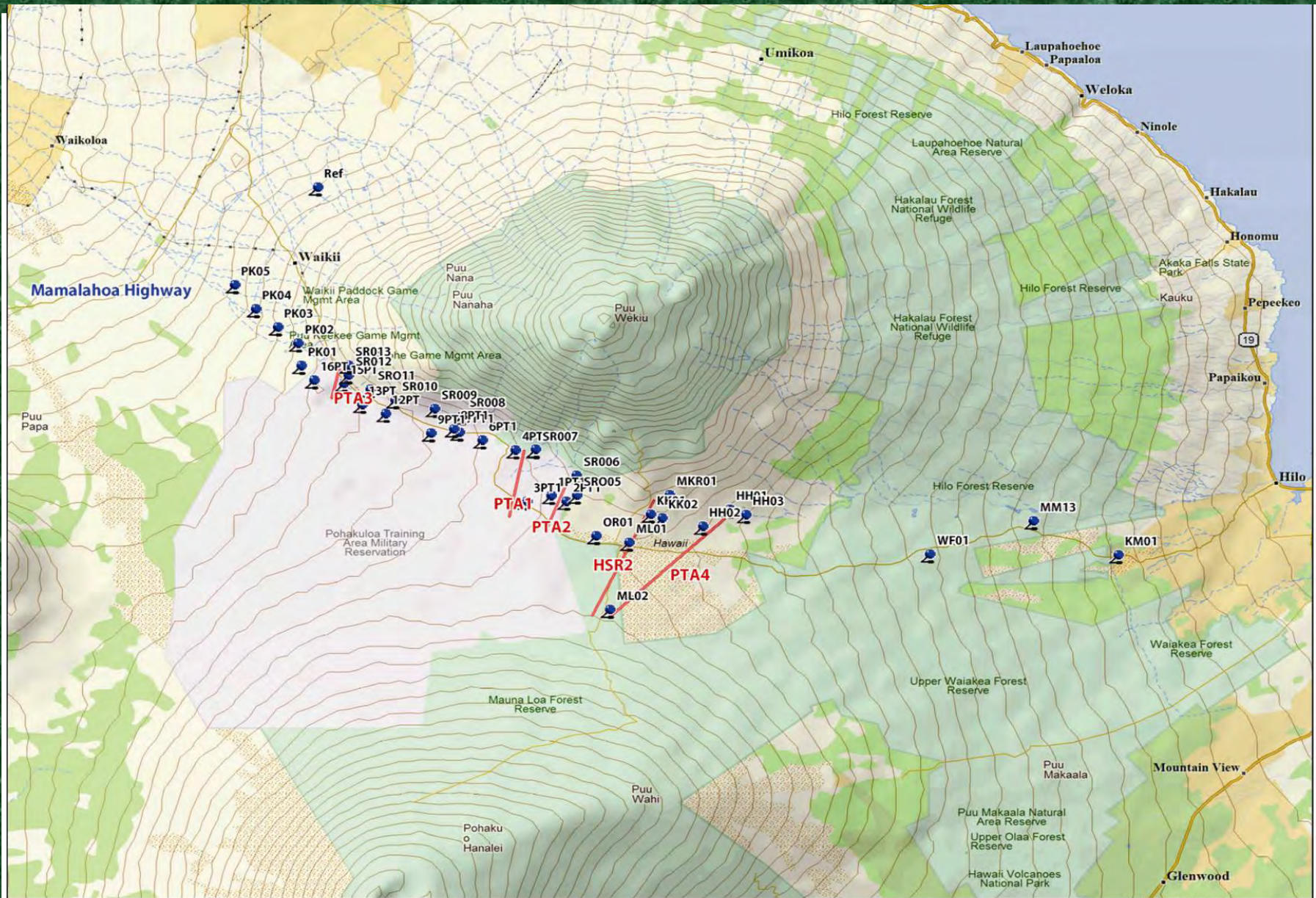
Water-bearing  
pillow lava

Ocean floor

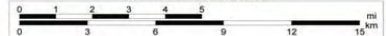
Dikes







Scale 1 : 325,000









TOP

TOP

Bottom

Bottom

R164  
3.0

R164  
7.0

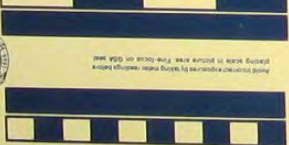
R164  
8.0

R164  
5.0

R164  
6.0

R164  
4.0

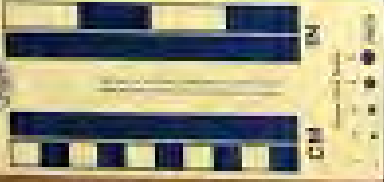
BOX  
261  
+  
262

GSA PHOTO METER  
  
 CM IN  
 Grain Size Scale  
 1 2 3 4 5  
 mm

Kodak Color Control Patches  
 Blue Cyan Green Yellow Red Magenta White 3/Color Black  
 1 2 3 4 5 6 7 8 9 10 11 12 13 14 15 16 17 18 19 20 21 22 23 24 25 26 27 28 29 30 31 32  
 Centimetres  
 1 2 3 4 5 6 7 8 9 10 11 12 13 14 15 16 17 18 19 20 21 22 23 24 25 26 27 28 29 30 31 32  
 Inches



GSA



BOX  
918

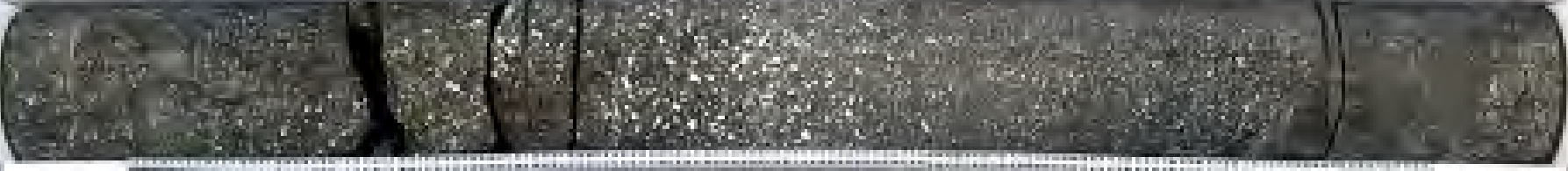


Kodak ColorChecker

TOP



1305  
5-0



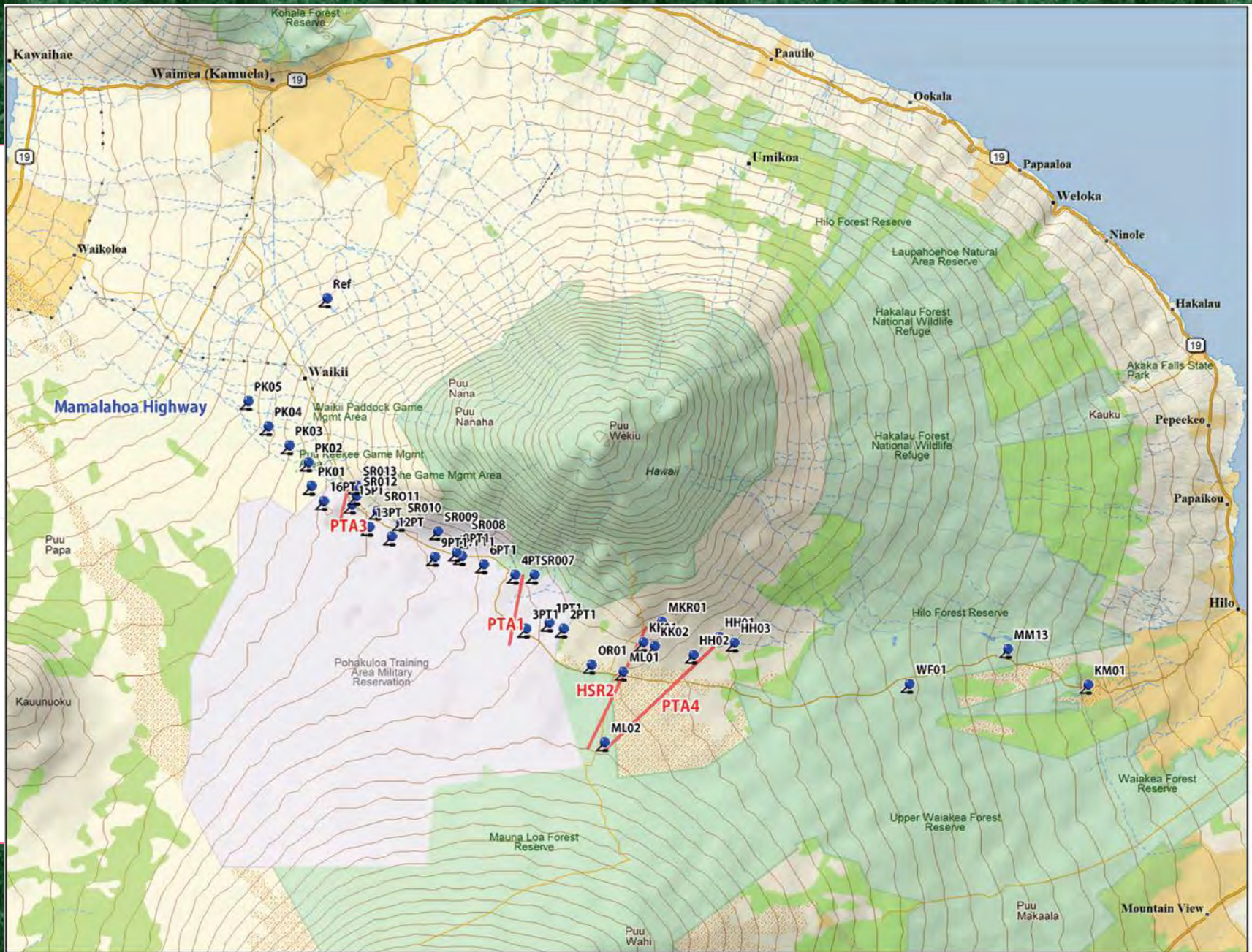
E-110 Reins  
4/11/66. CO



1305  
5-0

BOTTOM

Elevation



2000  
1000  
0

Scale 1 : 325,000





- There is interest by the Army in leaving the PTA-1 test hole open as a monitoring well to track and manage the impacts of development of a production well
- There is no immediate interest by the Army in developing a well near PTA-2; however, it could be used as a remote monitoring well to track long term changes in water levels/quality in response to climate change





Pau