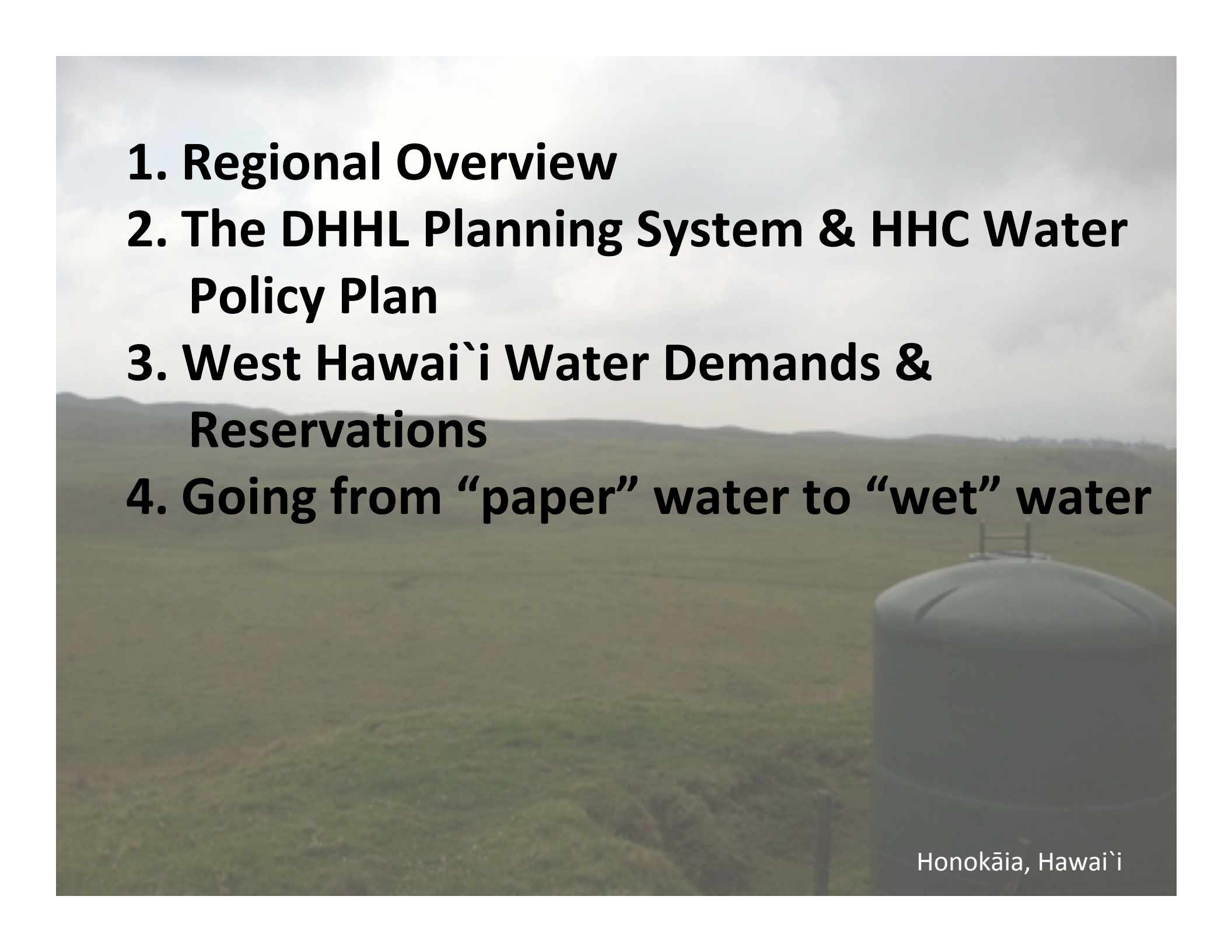


Department of Hawaiian Home Lands Water Projects and Issues in West Hawai`i

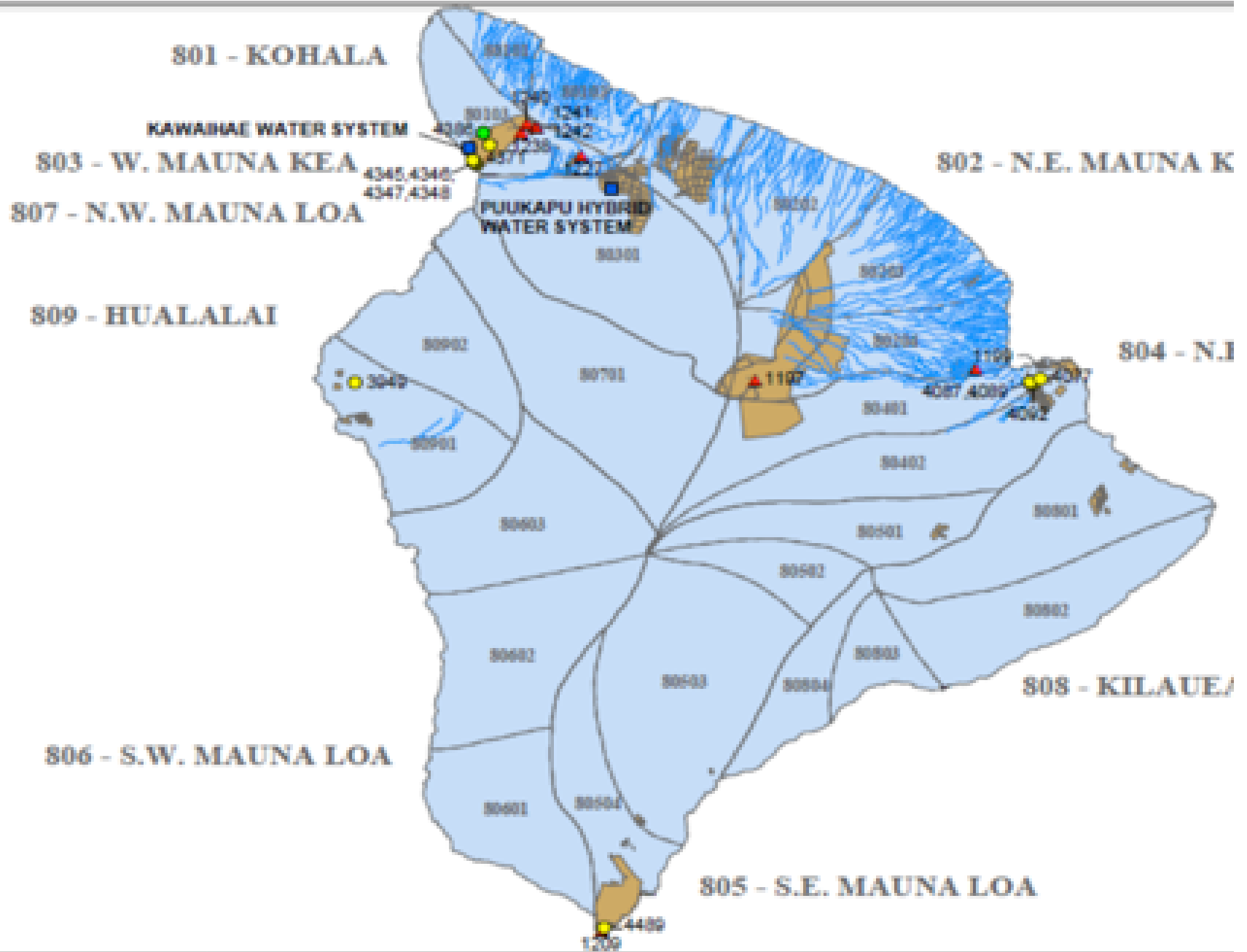
**Commission on Water Resource Management
Waimea, Hawai`i Island
Jonathan Likeke Scheuer, Consultant
June 18, 2019**

Honokāia, Hawai`i

- 
- An aerial photograph of a large, dark, cylindrical water storage tank in the foreground. The tank is situated in a valley with green fields and a winding road. In the background, there are rolling hills and mountains under a cloudy sky. The text is overlaid on the left side of the image.
- 1. Regional Overview**
 - 2. The DHHL Planning System & HHC Water Policy Plan**
 - 3. West Hawai`i Water Demands & Reservations**
 - 4. Going from “paper” water to “wet” water**

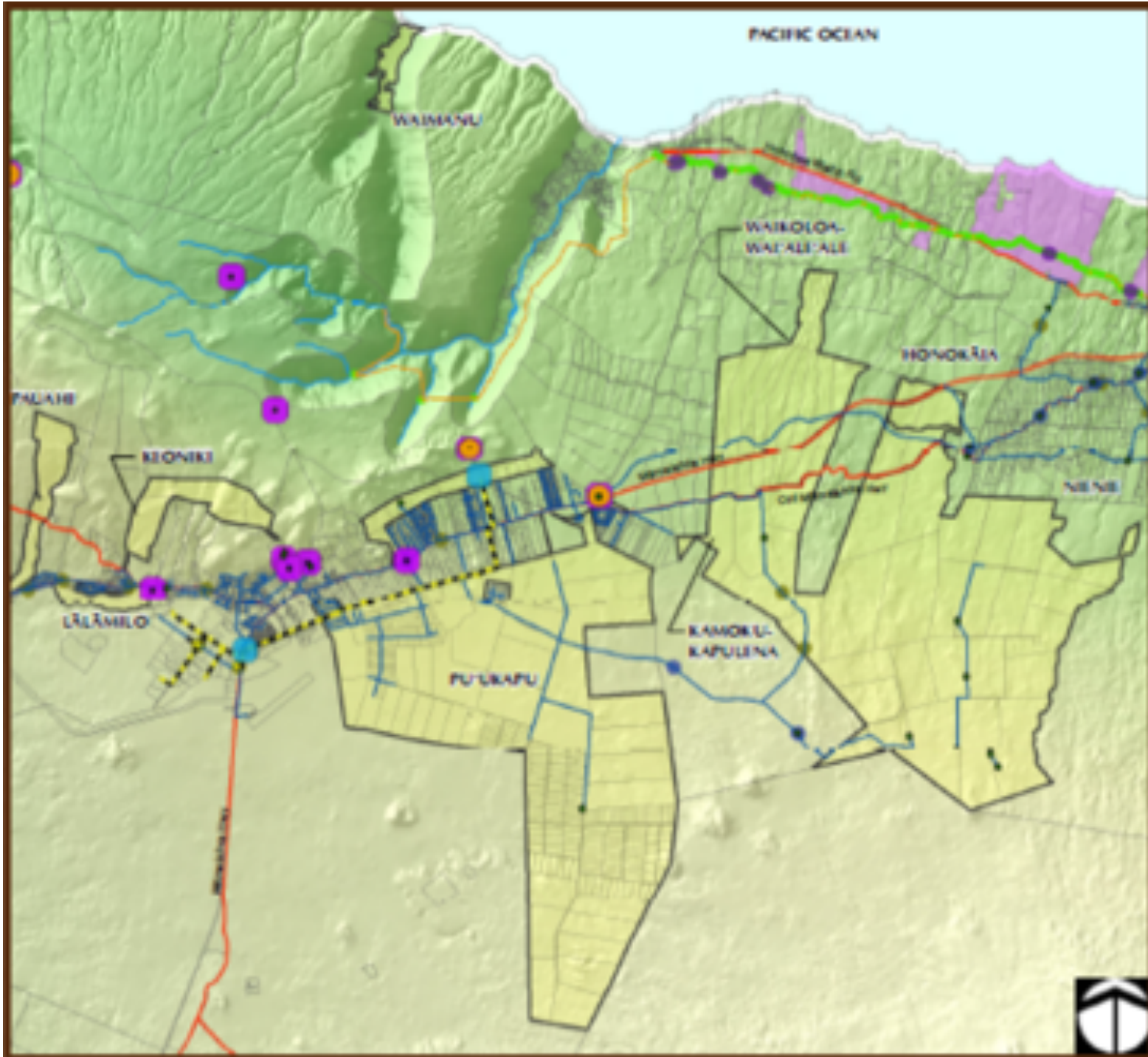
Regional Overview

- **Humu'ula-Pi'ihonua**
- **Waimea Nui**
- **Kawaihae**
- **Kealakehe-La'i 'Ōpua**

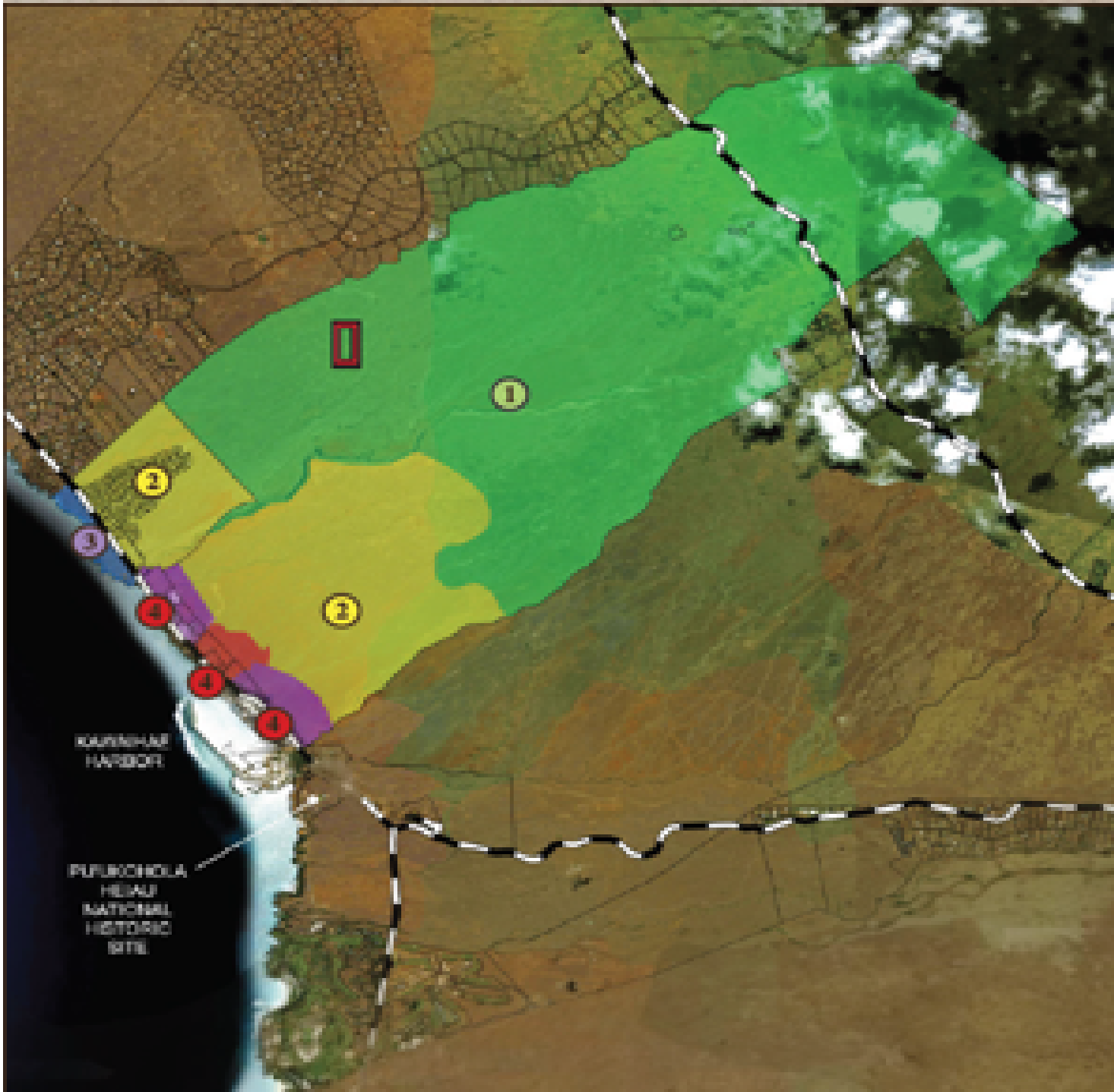




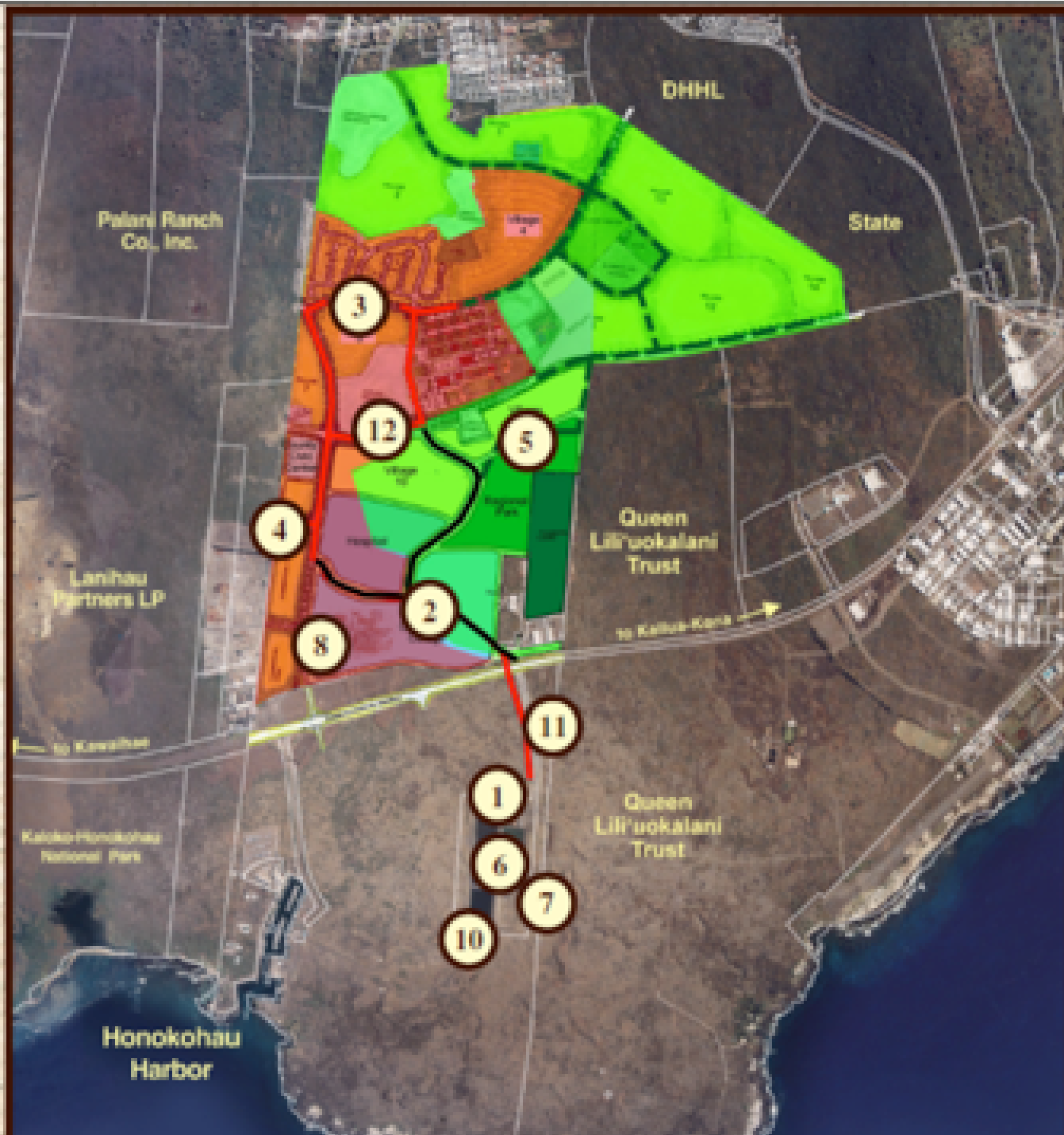
Humu'ula-Pi'ihonua



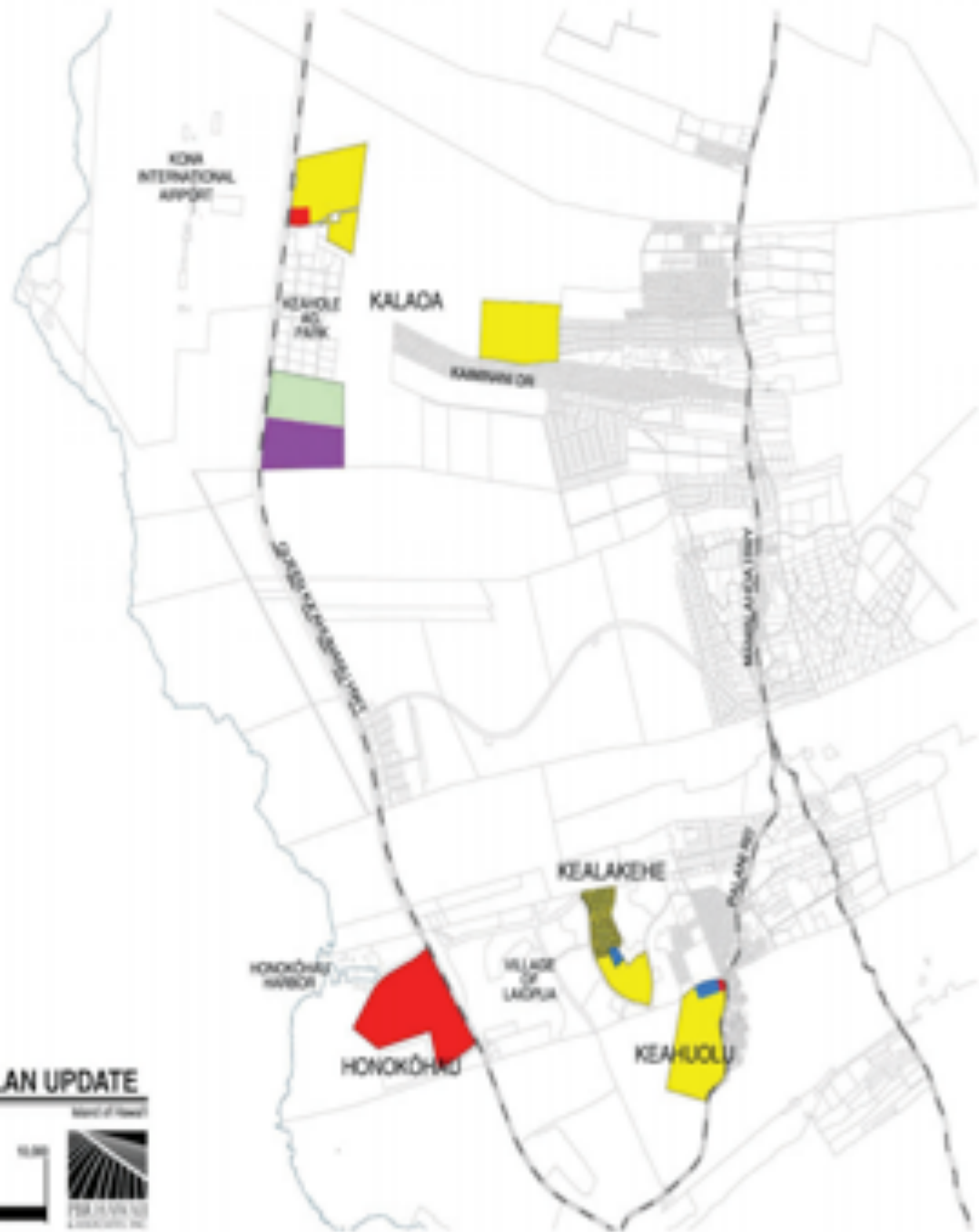
**Waimea
Nui**



**Kawaihae
Planning
Region**



Kealahou



- Legend**
- Land Use Categories**
- Commercial
 - Community Use
 - Conservation
 - General Agriculture
 - Industrial
 - Pastoral
 - Residential
 - Special District
 - Subsistence Agriculture
 - Supplemental Agriculture

Figure 3
Existing Land Inventory
WEST HAWAII ISLAND PLAN UPDATE

Department of Planning & Community Development | State of Hawaii

SCALE: LINEAR SCALE (FEET)

0 1,000 2,000 4,000

THE PLANNING CONSULTANTS, INC.

Kealakehe Planning Region

The DHHL Planning System & HHC Water Policy Plan



DHHL Planning System

The HHC Water Policy Plan (WPP)

- Data Gathering & Analysis: (2012)
- Beneficiary issue identification: (2012-2013)
- Draft Water Policy Plan (WPP): (Feb. 19, 2014)
- Beneficiary consultation: (Feb.-May 2014)
- Adoption (July 22, 2014)

WPP Priority Goal 1

Affirmatively communicate with beneficiaries regarding water decisions, performance, and water rights on a regional and annual basis

WPP Priority Goal 2

Aggressively, proactively, consistently, and comprehensively advocate for the kuleana of the beneficiaries, the DHHL, and the HHC to water before all relevant agencies and entities

WPP Priority Goal 3

Develop and manage a Water Assets Inventory (WAI)

WPP Priority Goal 4

Support watershed protection and restoration on DHHL lands and source areas for DHHL water.

WPP Annual Implementation Planning

Table I. Summary of FY 2019 WPP IP Performance

Red shading and plain text indicates implementation action goal was not met; yellow shading and italicized text indicates some progress was made; green shading and bold-faced text indicates the action goal was met.

Goal 1. Affirmatively communicate with beneficiaries regarding water decisions, performance, and water rights on a regional and annual basis.

#	Implementation Action(s)	Performance	Next Steps
1. a.	Annually and regionally present on DHEM water projects and issues in conjunction with EHC meetings.	Objective met	Proposed to be continued
1. b.	Continued implementation of ten targeted trainings on water rights for beneficiaries over two years in collaboration with the William S. Richardson School of Law's Ka Huli Ao program and others as available and appropriate. ²	Objective met	Proposed to be continued

West Hawai`i Water Demands & Reservations

- **We determine future water demands by:**
 - **Reviewing HHC land use designations**
 - **Applying water demand rates**
- **Calculations in State Water Projects Plan**
- **Keauhou Reservations August 17, 2015**
- **SWPP Approved May 16, 2017**
- **Additional groundwater reservations September 18, 2018**

Overall Hawai'i Island Water Demands (mgd)

	2016	2021	2026	2031
Potable	2.617	4.164	5.209	10.174
Nonpotable	1.367	5.266	5.266	39.221
Total	3.984	9.430	10.475	49.395

Water Demands by Tract (mgd)

	Potable	Nonpotable
Humu'ula-Pi'ihonua	0.25-0.3	3.4
Waimanu	0	0
Upolu Pt.	0.15	0
Ni'eni'e/ Kamoku-Kapulena-Waikoloa-Wai'ale'ale	0	0
Lālānilo/ Pauahi/ Keoniki	0.21	0.23
Honokāia	0.34	1.66
Pu'ukapu	0.61	0.81
Kawaihae	3.27	35.93
Kealakehe-La'i 'Ōpua	3.728	0

Actualizing Reservations

How do we go from “paper” water to “wet” water?

- Irrigation water for Waimea Nui
- Potable water at Kailapa
- Irrigation water for Kawaihae
- Water Credits for La`i `Ōpua

Irrigation Water for Waimea Nui

- **The DOA Waimea Irrigation System runs through Pu`ukapu 1.**
- **Diverts water from five “state” streams**
- **DHHL owns lands beneath the 60MG Pu`ukapu Reservoir**
- **Yet Pu`u Kapu lacks sufficient water**
 - **“Acceleration” and the Pu`u Kapu Hybrid System**
 - **2016 funding for WIS studies**

Potable and Irrigation Water for Kawaihae

- **Kawaihae Potable system**
 - **Sources: County, Private**
 - **Unsuccessful well development**
 - **Limited use & high rates**
 - **Lowering SY**
- **Kawaihae Irrigation needs**
 - **Kehena ditch issues**

Water Tank, Kailapa, Kawaihae

Water for La`i `Ōpua

- **DHHL lands are remote from sources**
- **Reservation is in place**
- **DHHL is pursuing multiple strategies**
 - **Well developments**
 - **Comments on Well Construction / Pump Installation Permits**

Discharge from industrial mariculture, NELHA

The HHC WPP Vision

Our vision is that there will be adequate amounts of water and supporting infrastructure so that homestead lands will always be usable and accessible, to enable us to return to our lands to fully support our self-sufficiency and self-determination in the administration of the Hawaiian Homes Commission Act (HHCA), and the preservation of our values, traditions, and culture.