

Implementation of the Pilot Phase of the Hawai'i Mesonet Real-time Climate Monitoring Network

Item B-6

Ayron M. Strauch, Hydrologist
Stream Protection and Management Branch

COMMISSION ON WATER RESOURCE MANAGEMENT

Ke Kahuwai Pono

"The trustee who oversees the rightful sharing of water."



Prepared in cooperation with the State of Hawai'i Commission on Water Resource Management and in collaboration with the University of Hawai'i Water Resources Research Center

Water-Resource Management Monitoring Needs, State of Hawai'i



Scientific Investigations Report 2020–5115

U.S. Department of the Interior
U.S. Geological Survey

iv

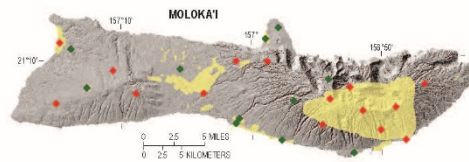
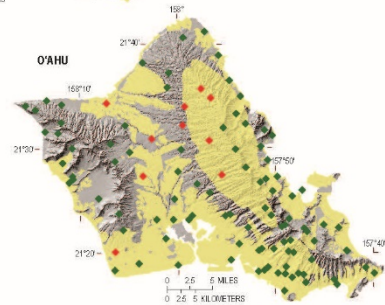
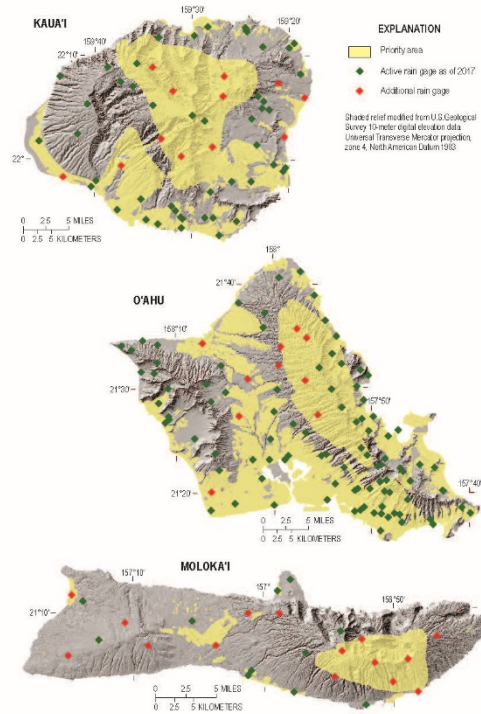


Figure ES1. Maps showing the rainfall-monitoring program for the Hawaiian Islands of Kauai, Oahu, Molokai, Maui, Lanai, and Hawaii.

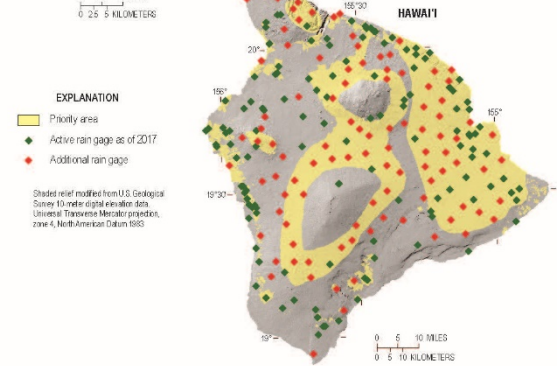
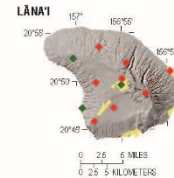
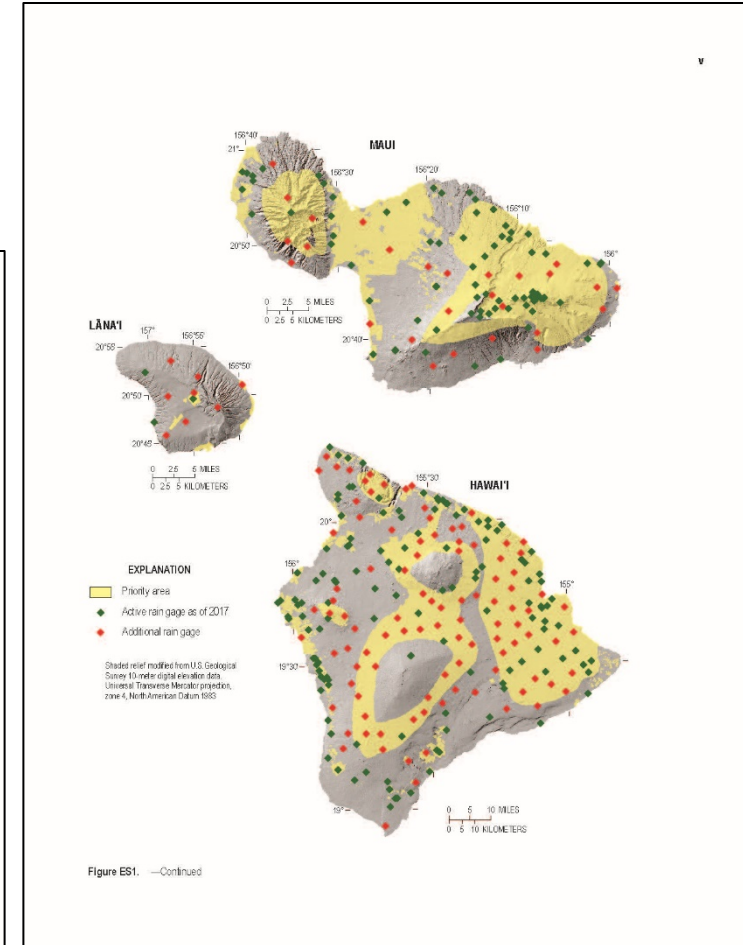
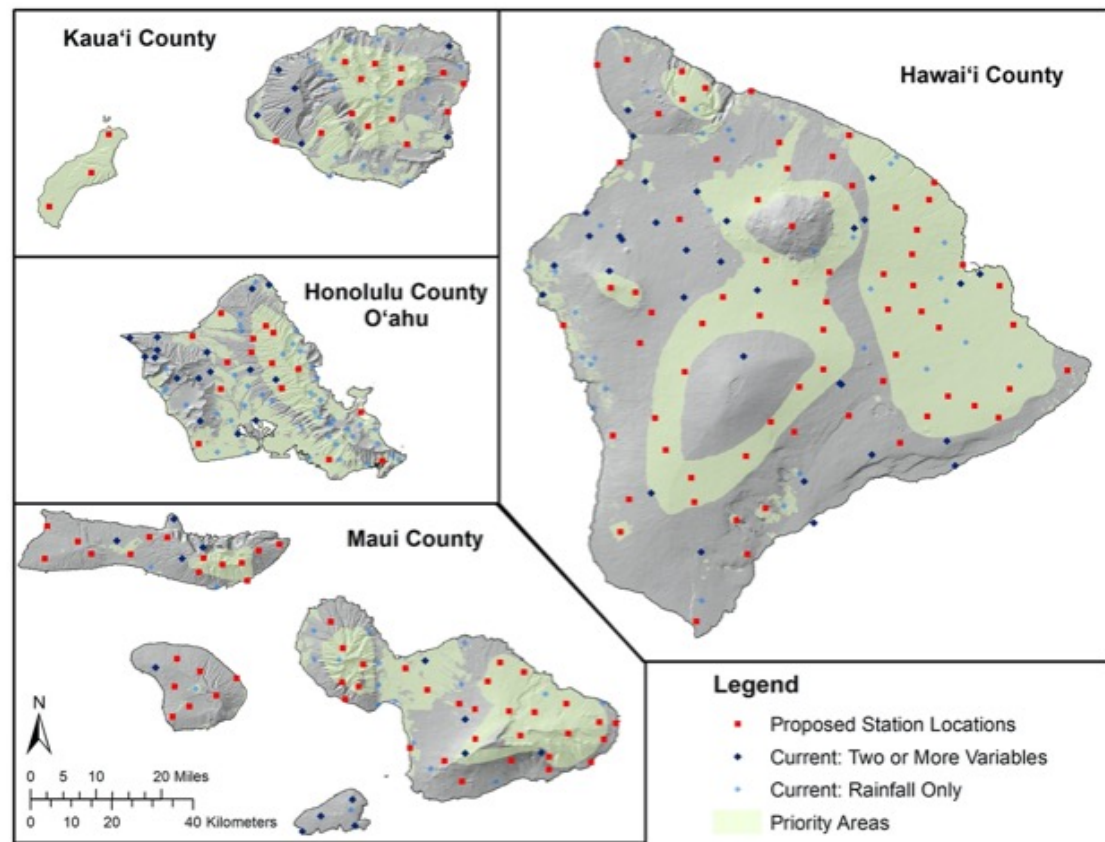
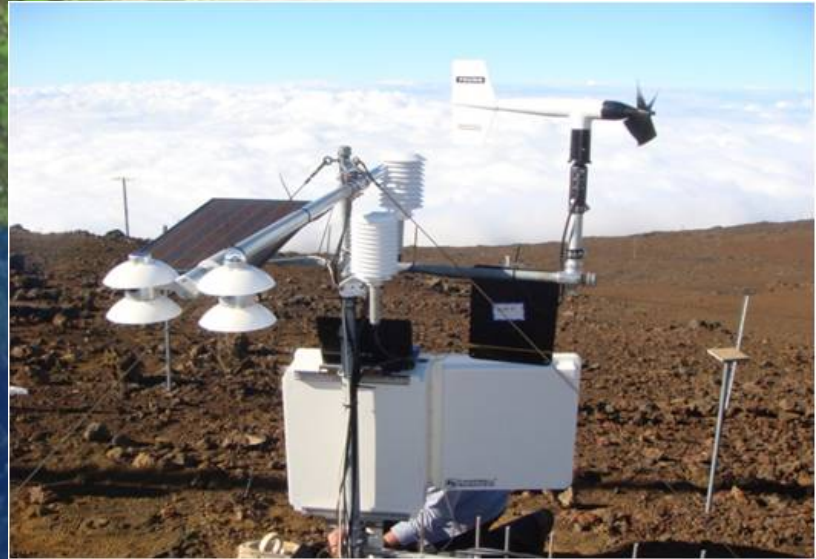
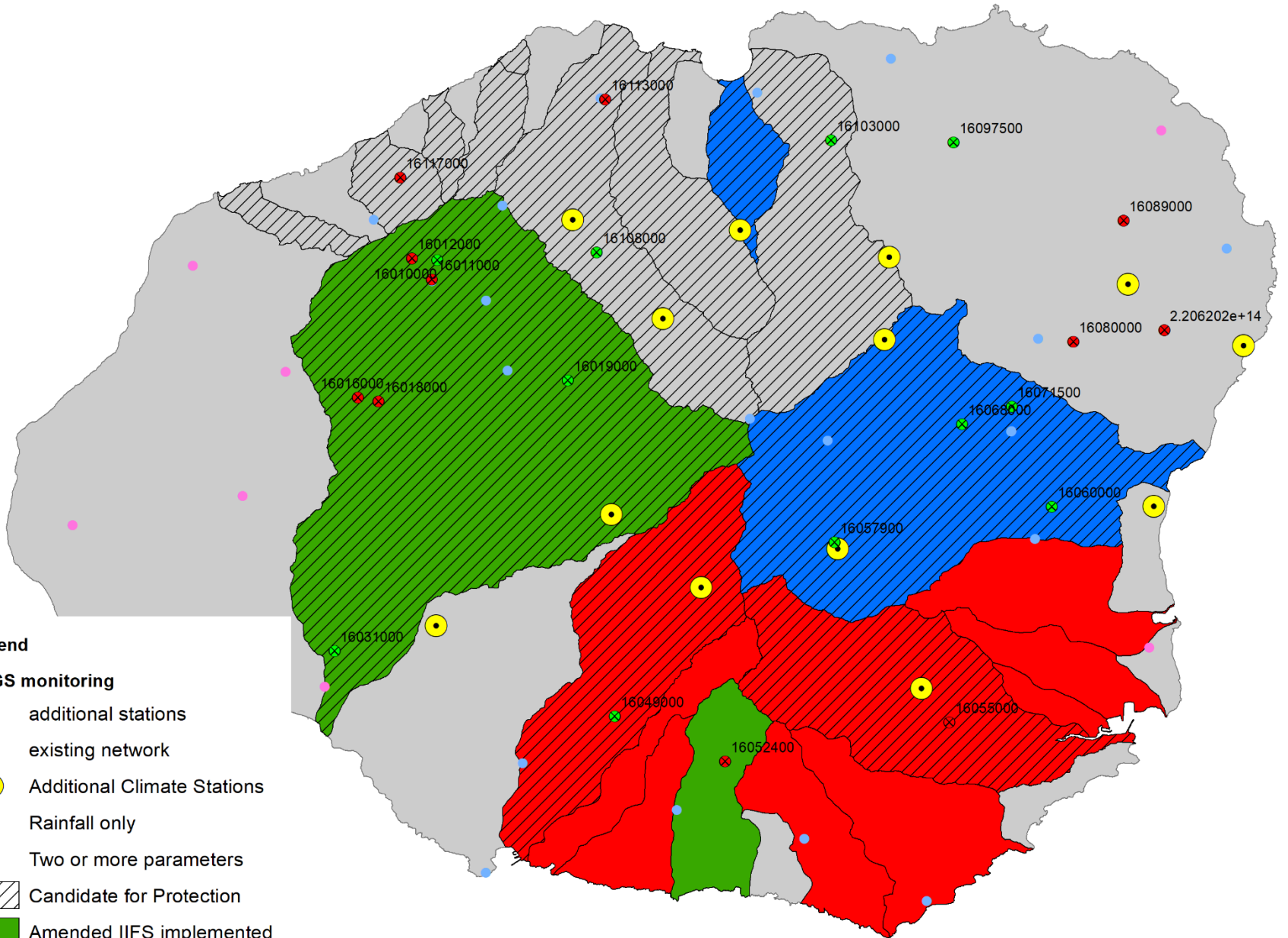


Figure ES1. —Continued





Legend

USGS monitoring

- ⊗ additional stations
- ⊗ existing network
- Additional Climate Stations
- Rainfall only
- Two or more parameters
- Candidate for Protection
- Amended IIFS implemented
- In Development
- Under Study

Legend

● Additional Climate Stations

● Rainfall only

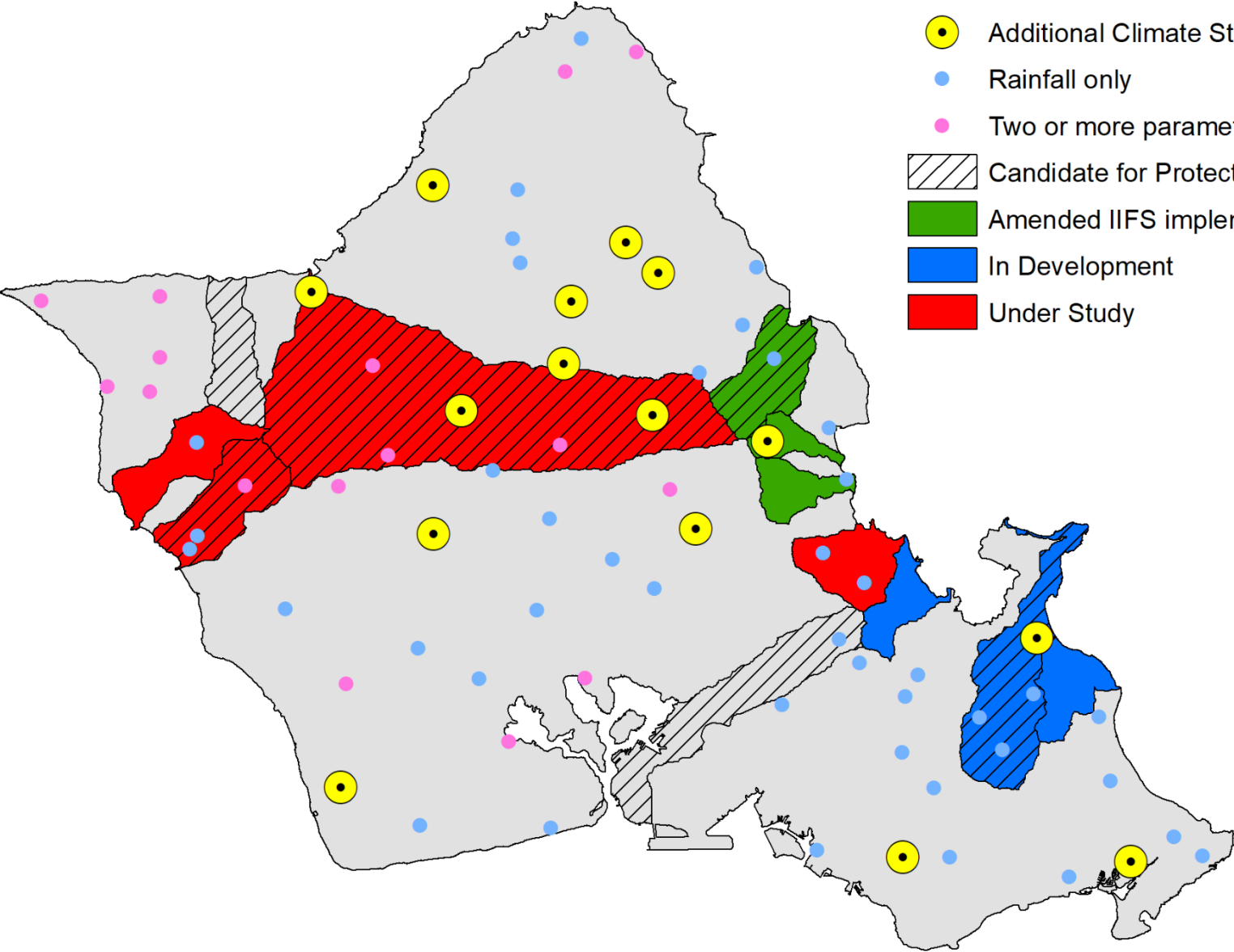
● Two or more parameters

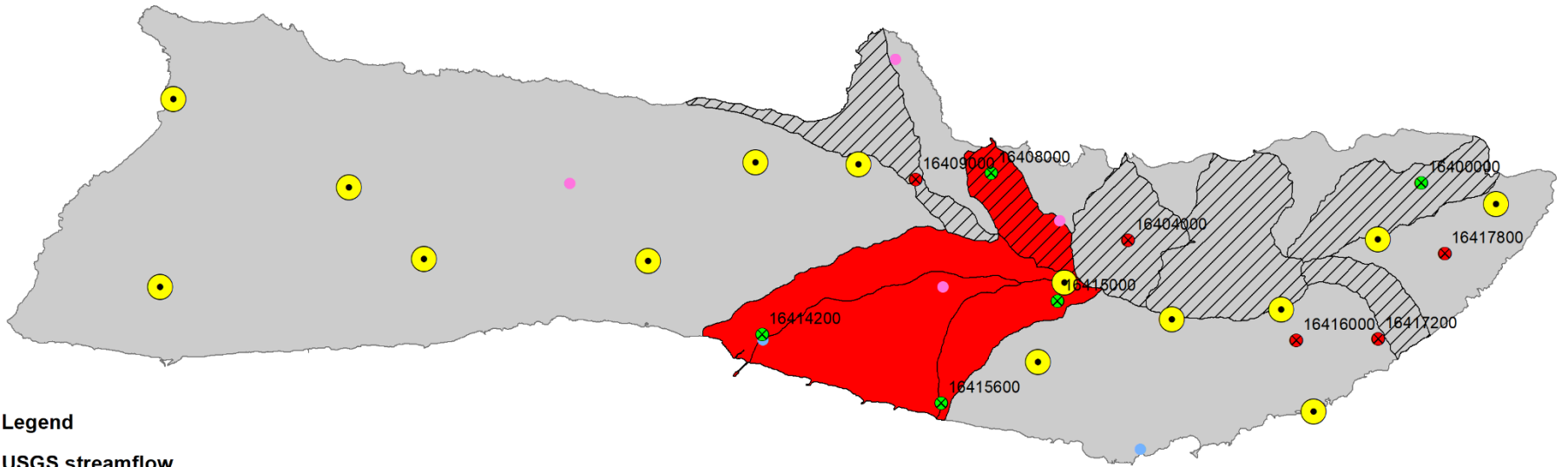
▨ Candidate for Protection

■ Amended IIFS implemented

■ In Development

■ Under Study

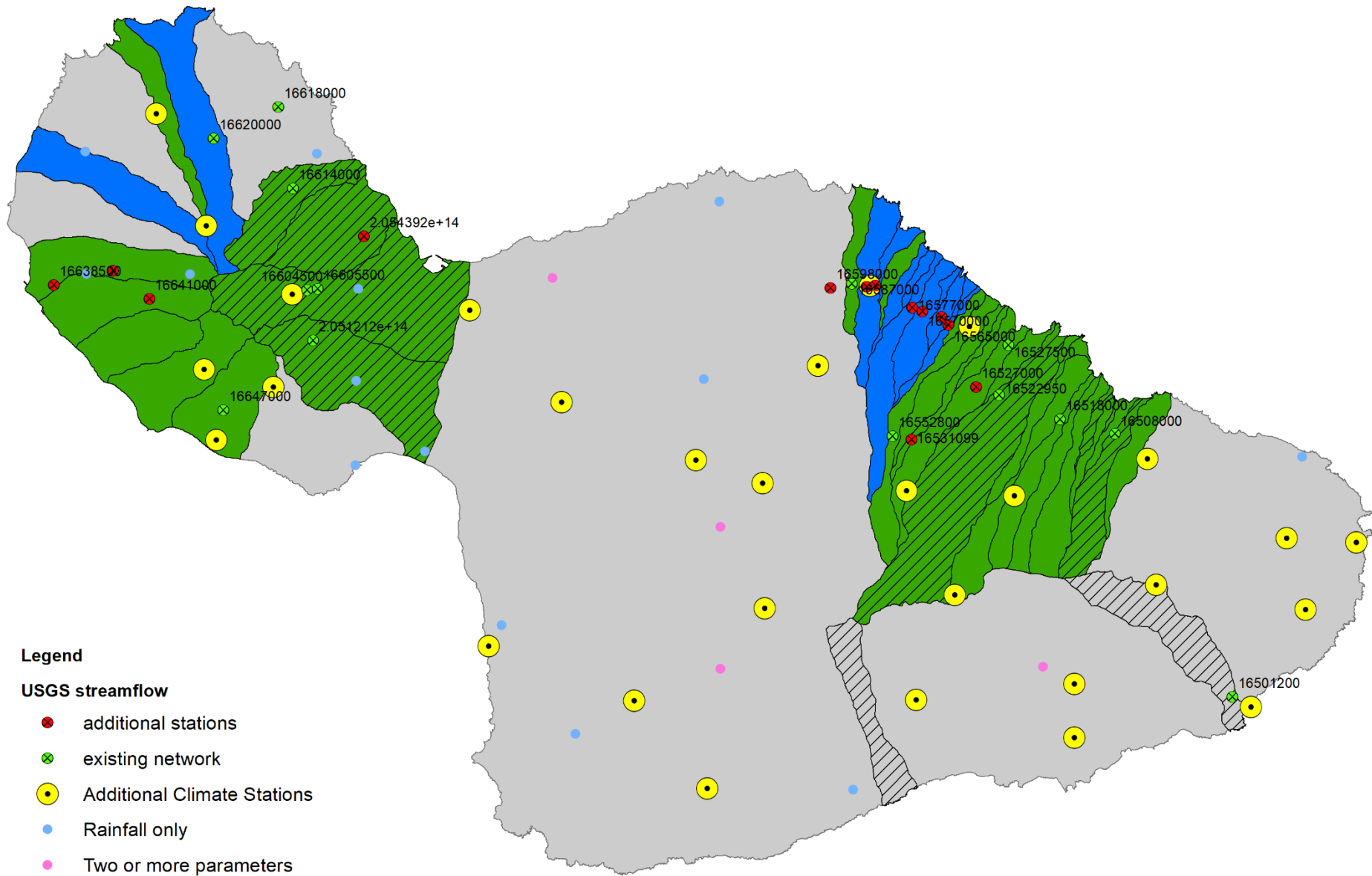




Legend

USGS streamflow

- existing network
- additional stations
- Additional Climate Stations
- Rainfall only
- Two or more parameters
- Candidate for Protection
- Amended IIFS implemented
- In Development
- Under Study

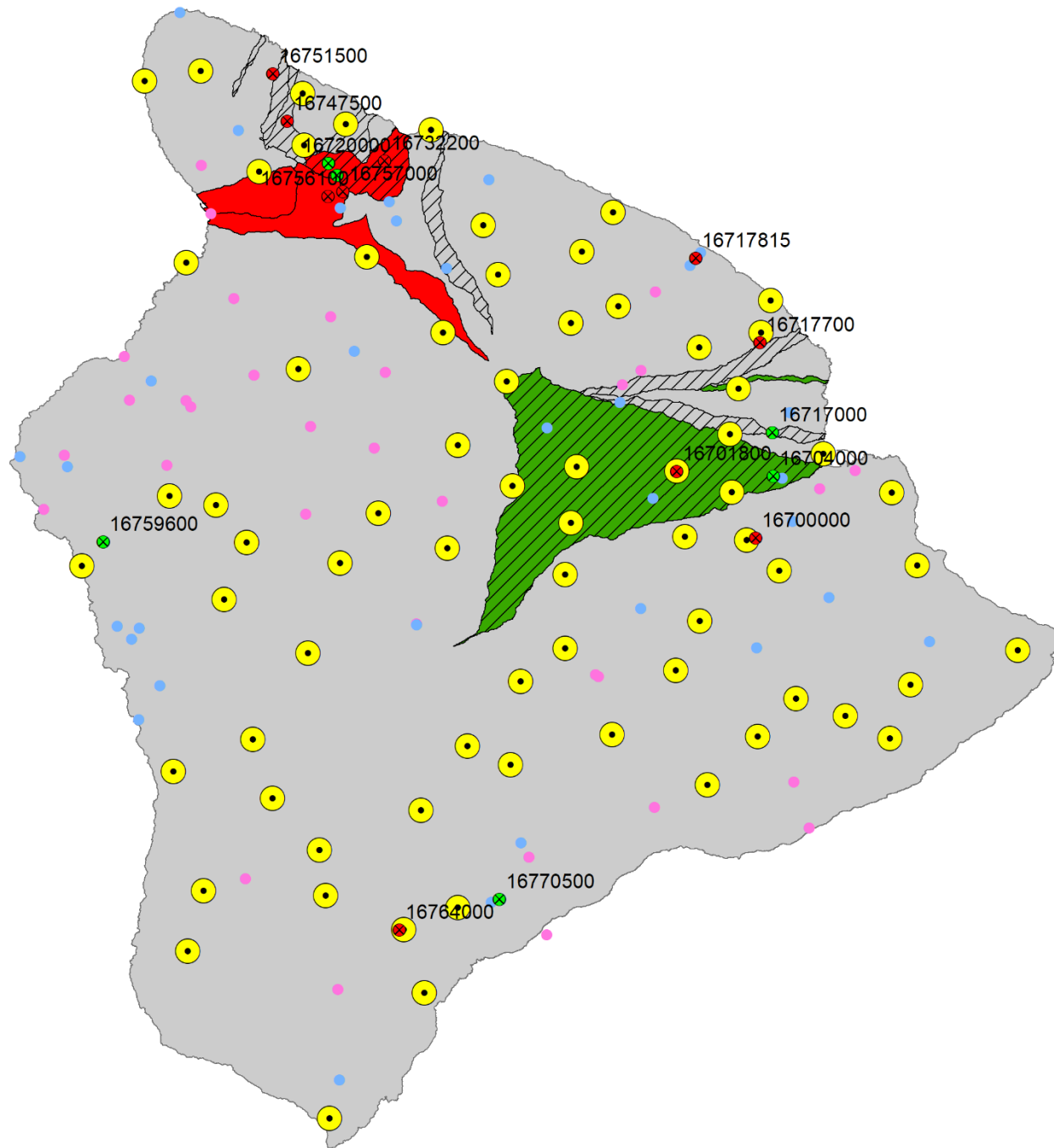


Legend

USGS streamflow

- additional stations
- existing network
- Additional Climate Stations
- Rainfall only
- Two or more parameters

- Candidate for Protection
- Amended IIFS implemented
- In Development
- Under Study

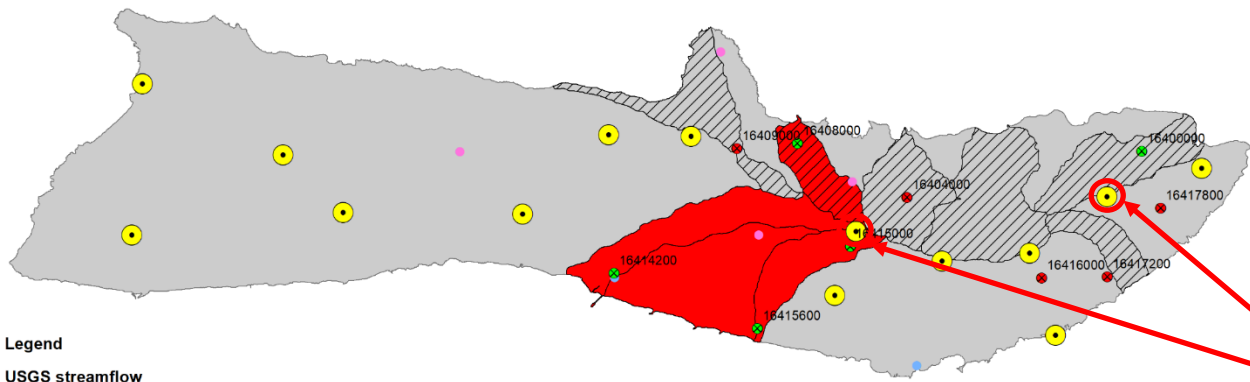


Pilot Phase of the Hawai'i Mesonet Real-time Climate Monitoring Network

Category	Year 1	Year 2	Total
Salary	\$9,900	\$10,200	\$20,100
Fringe benefits	\$2,689	\$3,790	\$6,479
Travel	\$4,860	\$4,860	\$9,720
Supplied	\$630	\$630	\$1260
Data plans	\$0	\$480	\$480
Equipment	\$58,156	\$0	\$58,156
Total Direct Costs	\$76,235	\$19,960	\$38,039
Indirect Costs	\$1,808	\$1,996	\$3,804
Total	\$78,043	\$21,956	\$99,999

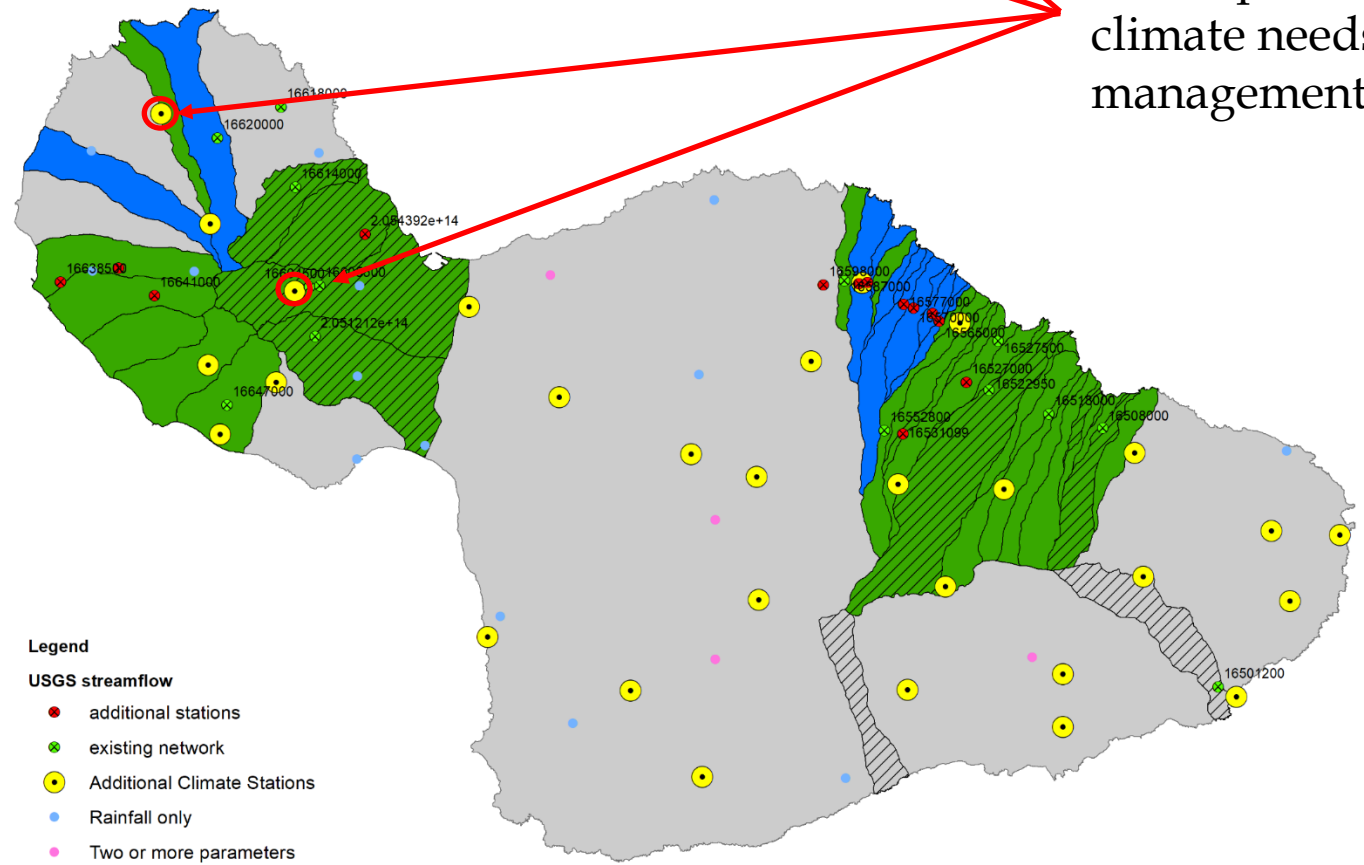
Equipment purchase and installation for 4 new climate stations

Coding to develop real-time climate maps (with automated QA/QC)
for the State of Hawai'i



Legend
USGS streamflow

Overlap between
climate needs and
management needs



- Legend
- USGS streamflow**
- additional stations
 - existing network
 - Additional Climate Stations
 - Rainfall only
 - Two or more parameters
 - ▨ Candidate for Protection
 - Amended IIFS implemented
 - In Development
 - Under Study