

LAND USE COMMISSION  
NOTIFICATION OF LAND USE COMMISSION MEETING

May 12, 2011 – 9:30 a.m.

Site Visit for DR11-43 Māhā`ulepū Farm LLC- (see map on other side for details)

1:00 P.M.

Kaua`i Marriott, Kaua`i Ballroom, 3160 Rice Street Līhu`e, Kaua`i 96766

**A G E N D A**

**I. CALL TO ORDER**

**II. ADOPTION OF MINUTES**

April 21, 2011

**III. TENTATIVE MEETING SCHEDULE**

**IV. ACTION**

**DR11-43 Māhā`ulepū Farm LLC (Kaua`i)**

- To consider Petition for Declaratory Order to Designate Important Agricultural Lands for approximately 1,533 acres at Kōloa, Kaua`i, Hawai`i

**V. ACTION**

**A83-557 Princeville Development Corporation (Kaua`i)**

- To consider Motion for Order Amending Findings of Fact, Conclusions of Law, and Decision and Order dated March 28, 1985

May 13, 2011 – 10:00 a.m.

Airport Conference Center

400 Rodgers Blvd. Suite 700, Room #3

(in Hawaiian Airlines Terminal Building)

Honolulu, HI 96819

**VI. ACTION**

**A09-782 Tropic Land LLC (O`ahu)**

- Adoption of Findings of Fact, Conclusions of Law, and Decision and Order

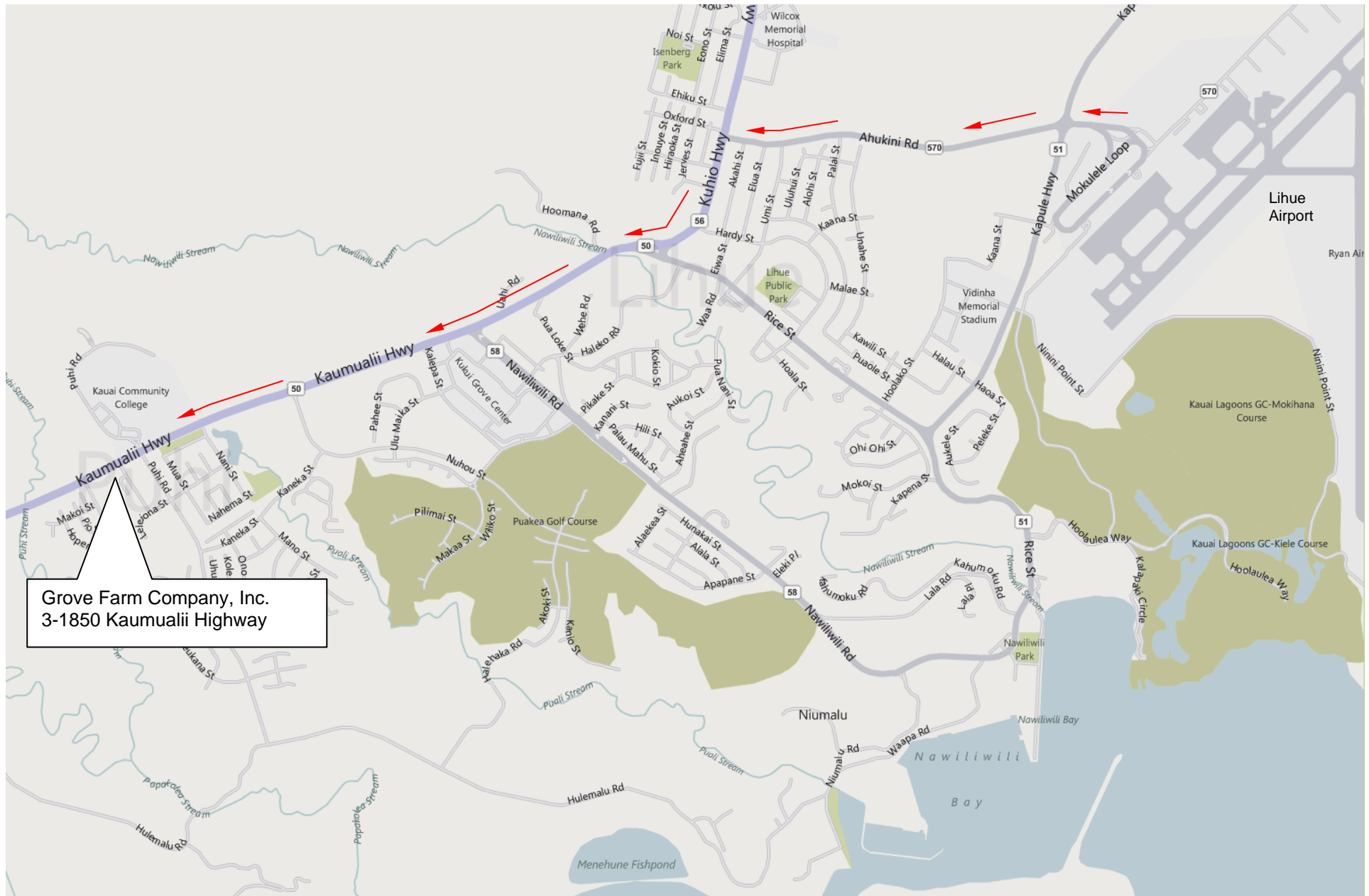
**VII. ACTION**

**A87-617 Bridge `Āina Le`a, LLC, and D.W. `Āina Le`a Development, LLC (Hawai`i)**

- D.W. `Āina Le`a, LLC's Motion to Amend Conditions and Amendment to Motion to Amend Conditions 1, 5, and 7

**VIII ADJOURNMENT**

The Commission may elect to consult with counsel in executive session pursuant to Section 92-5, HRS. Persons with disabilities who need accommodation should call (808) 587-3822 no later than 12:00 noon, 2 business days before the date of the meeting. The mailing address for the Land Use Commission is P.O. Box 2359, Honolulu, Hawai`i, 96804-2359. Some materials for these agenda items may be available on our website at <http://luc.state.hi.us>.



1. From **Lihue Airport** start at **HI-570** along **Ahukini Road** going **West** (1.2 miles)
2. Turn **Left** on **Kuhio Highway HI-56** (0.42 miles)
3. Continue on **Kaumualii Highway HI-50** going **West** (1.83 miles)
4. After **Puhi Road** Turn **Left** on **Kikowaena Street** and Arrive on the **Right** at **Grove-Farm Company, Inc. 3-1850 Kaumualii Highway, Lihue**