

LAND USE COMMISSION
NOTICE OF LAND USE COMMISSION MEETING
DATE, TIME AND PLACE

September 8, 2011 – 9:30 a.m.
Site Visit: DR11-45 PARKER RANCH, INC.
(see Map on other side for details)

September 8, 2011 – 1:30 p.m.
Waikoloa Beach Marriott Resort
Naupaka Rooms V, VI, and VII
69-275 Waikoloa Beach Drive
Waikoloa, Hawai`i 96738

September 9, 2011 – 9:30 a.m.
Conference Room 204, Second Floor,
Leiopapa A Kamehameha,
235 South Beretania Street,. Honolulu, Hawai`i 96804

A G E N D A

I. CALL TO ORDER

II. ADOPTION OF MINUTES
August 25-26, 2011

III. TENTATIVE MEETING SCHEDULE

IV. ACTION

DR11-45 PARKER RANCH, INC. (Hawai`i)

To consider Declaratory Order to Designate Important Agricultural Lands for approximately 56,771.8 acres at Hāmākua and South Kohala, Hawai`i

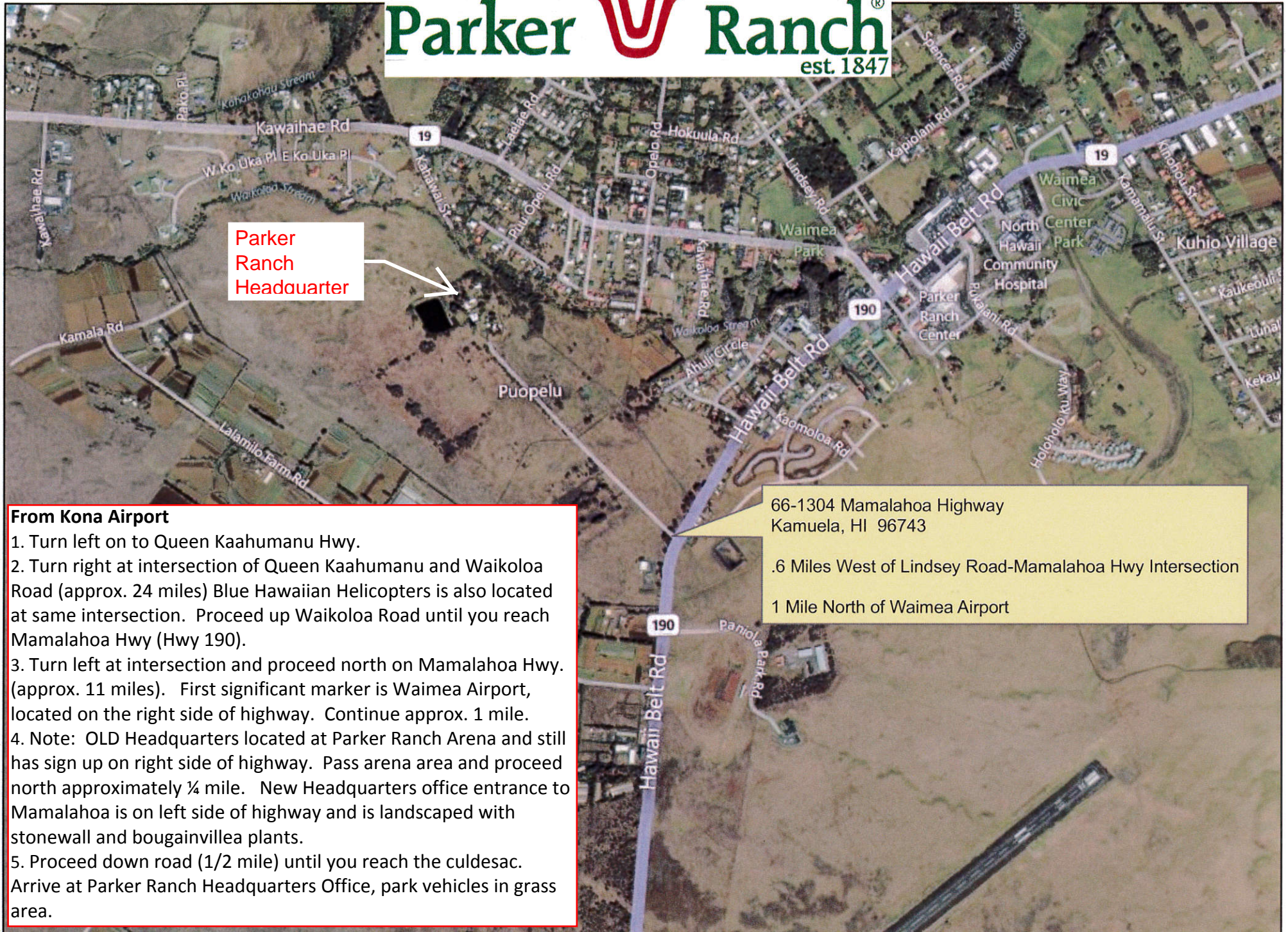
September 9, 2011

V. ACTION

A06-771 D.R. HORTON – SCHULER HOMES,LLC (O`ahu)

- To consider Petition to Intervene filed by The Sierra Club, Hawai`i Chapter, O`ahu Group
- To consider Petition to Intervene filed by State Senator Clayton Hee

VI. ADJOURNMENT



Parker
Ranch
Headquarter

66-1304 Mamalahoa Highway
Kamuela, HI 96743

.6 Miles West of Lindsey Road-Mamalahoa Hwy Intersection

1 Mile North of Waimea Airport

From Kona Airport

1. Turn left on to Queen Kaahumanu Hwy.
2. Turn right at intersection of Queen Kaahumanu and Waikoloa Road (approx. 24 miles) Blue Hawaiian Helicopters is also located at same intersection. Proceed up Waikoloa Road until you reach Mamalahoa Hwy (Hwy 190).
3. Turn left at intersection and proceed north on Mamalahoa Hwy. (approx. 11 miles). First significant marker is Waimea Airport, located on the right side of highway. Continue approx. 1 mile.
4. Note: OLD Headquarters located at Parker Ranch Arena and still has sign up on right side of highway. Pass arena area and proceed north approximately ¼ mile. New Headquarters office entrance to Mamalahoa is on left side of highway and is landscaped with stonewall and bougainvillea plants.
5. Proceed down road (1/2 mile) until you reach the culdesac. Arrive at Parker Ranch Headquarters Office, park vehicles in grass area.