

LAND USE COMMISSION
NOTICE OF LAND USE COMMISSION SITE VISIT

June 14, 2017- Land Use Commission
Site Visit for A17-802 County of Kaua`i Housing Agency- Lima Ola HRS 201H Project
10:00 a.m.

Note: Site Visit "Stops" and order may be subject to change based on weather conditions on June 14th.

(Meet at 404 Mehana Road, `Ele`ele- Stop 1 for initial briefing- See map on back)

Airport Directions to Stop 1 of Lima Ola Site Visit:

Address at Stop 1: 404 Mehana Rd. `Ele`ele, HI 96705

- 1) Exit airport on Ahukini Rd – 1.3 mi
- 2) Turn Left onto HI-56 S (Kūhio Hwy) – 0.4 mi
- 3) Continue onto HI-50 W (Kaumuali`i Hwy) – 15.4 mi
- 4) Turn left onto Mahea Rd, travel 300', park on grass flat on Northwestern intersection of Mahea Rd and Iluna St.

Stop 1: View of Western project border, existing utility easements, wastewater tie-in point, and adjacent residential development (Kaua`i Habitat for Humanity). Walk up Mahea Rd. View of Mahea Rd and Kaumuali`i Highway intersection – proposed intersection improvements and east bound bus stop.

Stop 2: View of South and East end of project. View of future proposed Regional Park (A&B).

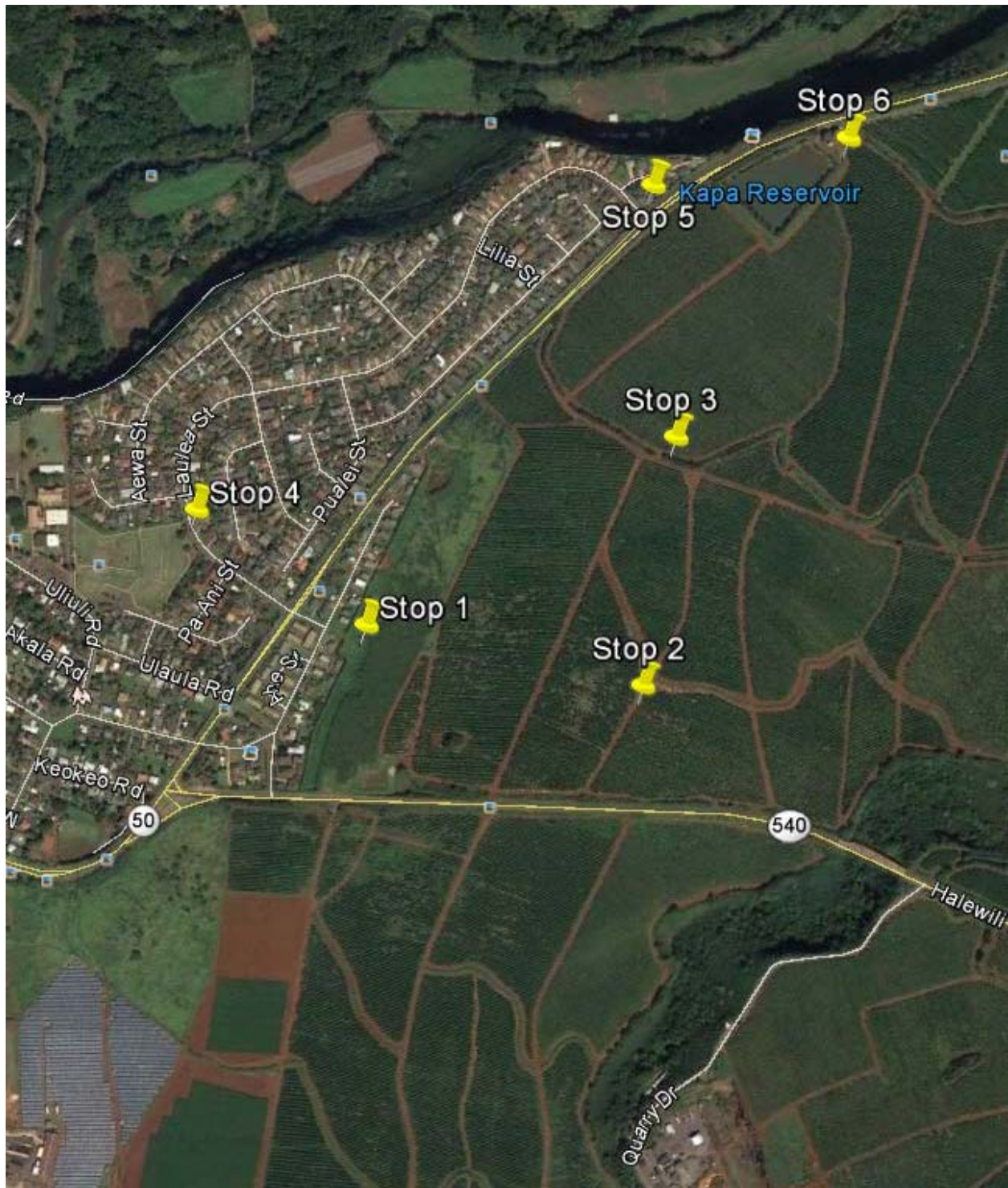
Stop 3: View of Ditch #1 (noted in AIS).

Stop 4: `Ele`ele Nani Park and `Ele`ele School.

Stop 5: View of North end of Project. Phase 4 proposed intersection improvements at Laulea & Kaumuali`i Highway.

Stop 6: Kapa Reservoir – View of Northern Border of project.

Note: Site Visit "Stops" and order may be subject to change based on weather conditions on June 14th.



The Commission may elect to consult with counsel in executive session pursuant to Section 92-5, HRS. Persons with disabilities who need accommodation should call (808) 587-3822 no later than 12:00 noon, 2 business days before the date of the meeting. The mailing address for the Land Use Commission is P.O. Box 2359, Honolulu, Hawai'i, 96804-2359. Some materials for these agenda items may be available on our website at <http://luc.hawaii.gov/>.