

LAND USE COMMISSION
NOTIFICATION OF LAND USE COMMISSION MEETING AND SITE VISIT
A G E N D A

SITE VISIT

DR17-60 MONSANTO COMPANY-Molokai IAL (Molokai)

October 18, 2017 –10:00 a.m.

(start time may vary slightly due to flight/weather/traffic conditions)

***see map on back- Meet for briefing at Coffees of Hawaii, 1630 Farrington Avenue to start site visit**

MEETING- October 18, 2017 – 1:30 p.m.

**Kulana O’iwi, DHHL / OHA Conference Room,
600 Maunaloa Highway, Kaunakakai, Molokai, Hawai`i**

I. CALL TO ORDER

II. ADOPTION OF MINUTES

October 11, 2017 Minutes

III. TENTATIVE MEETING SCHEDULE

IV. HEARING AND ACTION – DR17-60 MONSANTO COMPANY-Molokai IAL (Molokai)

To Consider Petition for Declaratory Order to Designate Important Agricultural Lands for approximately 1,084.079 acres at Naiwa, Manowainui, Kahanui, Moloka’i, **identified by** TMK No. (2) 5-2-012-004

MEETING- October 19, 2017 – 8:00 a.m.

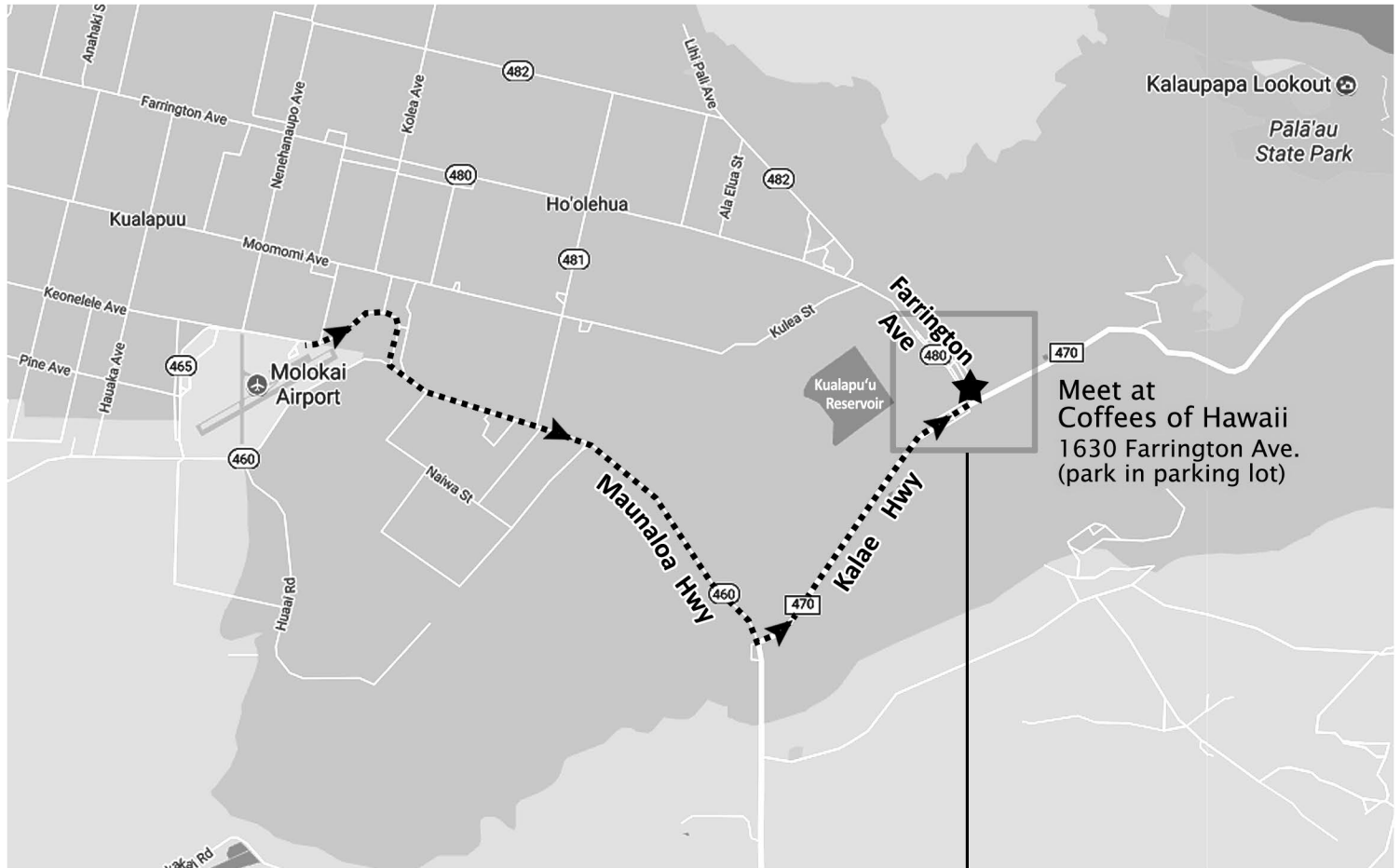
**Kulana O’iwi, DHHL / OHA Conference Room,
Maunaloa Highway, Kaunakakai , Molokai, Hawai`i**

V. CONTINUED HEARING AND ACTION - DR17-60 MONSANTO COMPANY-Molokai IAL (Molokai)

VI. ADJOURNMENT

The Commission may elect to consult with counsel in executive session pursuant to Section 92-5, HRS. Persons with disabilities who need accommodation should call (808) 587-3822 no later than 12:00 noon, 2 business days before the date of the meeting. The mailing address for the Land Use Commission is P.O. Box 2359, Honolulu, Hawai`i, 96804-2359. Some materials for these agenda items may be available on our website at <http://luc.hawaii.gov>.

Monsanto Company Molokai Site Visit Map & Directions

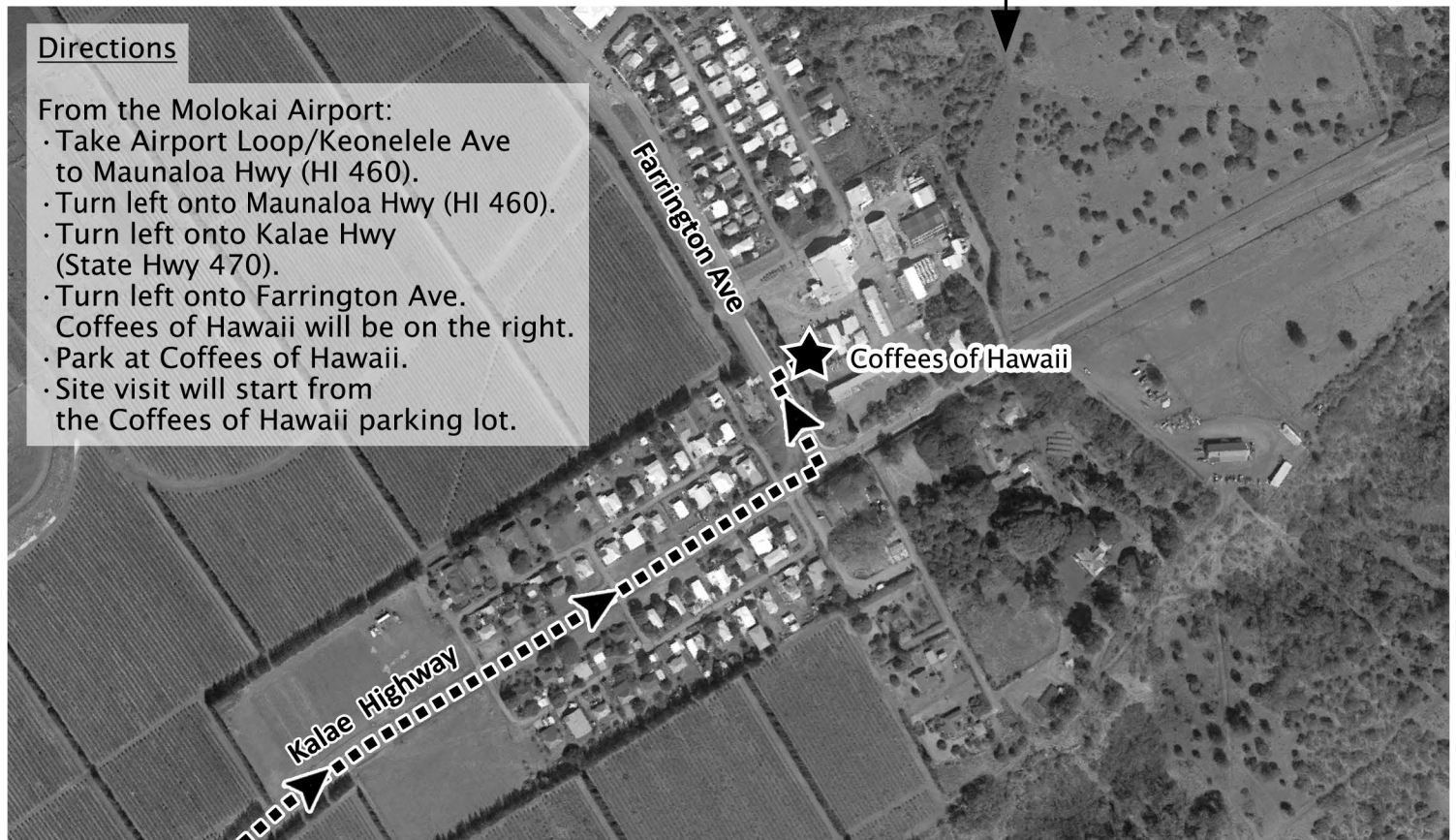


Meet at
Coffees of Hawaii
1630 Farrington Ave.
(park in parking lot)

Directions

From the Molokai Airport:

- Take Airport Loop/Keonelele Ave to Maunaloa Hwy (HI 460).
- Turn left onto Maunaloa Hwy (HI 460).
- Turn left onto Kalae Hwy (State Hwy 470).
- Turn left onto Farrington Ave. Coffees of Hawaii will be on the right.
- Park at Coffees of Hawaii.
- Site visit will start from the Coffees of Hawaii parking lot.



CLOSED-TOE SHOES REQUIRED. There will be some walking on rough terrain.