

LAND USE COMMISSION
NOTIFICATION OF LAND USE COMMISSION MEETING
A G E N D A

November 20, 2019 – 9:30 a.m.
Airport Conference Center
400 Rodgers Boulevard, Suite 700, Room #IIT#2
(in Hawaiian Airlines Terminal Building)
Honolulu, HI 96819

- I. CALL TO ORDER
- II. ADOPTION OF MINUTES
November 6-7, 2019 Minutes
- III. TENTATIVE MEETING SCHEDULE
- IV. ADOPTION OF ORDER
DR19-67 KU`ULEI HIGASHI KANAHELE and AHIENA KANAHELE (HAWAII)
 - Adoption of the Form of the Order
- V. ACTION
DR19-66 POMA`IKAI PARTNERS LLC (O`AHU)
 - Consider Amended Petition for Declaratory Order to Designate Important Agricultural Lands
- VI. STATUS REPORT AND ACTION (IF NECESSARY)
A87-610 Tom Gentry and Gentry Pacific, Ltd. (Successor Petitioner- Kamehameha Schools), (O`AHU)
- VII. ACTION
A87-610 Tom Gentry and Gentry Pacific, Ltd. (Successor Petitioner- Kamehameha Schools), (O`AHU)
 - Motion for Modification of Decision and Order and Time Extension
- VIII. RECESS

LAND USE COMMISSION
NOTIFICATION OF LAND USE COMMISSION MEETING
A G E N D A

November 21, 2019 – 9:30 a.m.
Leiopapa A Kamehameha,-Conference Room 204, Second Floor
235 South Beretania Street, Honolulu, HI 96813

- IX. CALL TO RECONVENE
- X. ACTION
A17-804 HAWAII MEMORIAL LIFE PLAN, LTD. (O`AHU) Petition for district boundary amendment
Consider HUI O PIKILOA, an unincorporated Association, LIANNE CHING, BETTYE HARRIS, RICHARD MCCREEDY, JULIANNE MCCREEDY, JESSE REAVIS and GRANT YOSHIMORI 's Petition To Intervene
- XI. ADJOURNMENT
SITE VISIT TO FOLLOW – (SEE BACK OF THIS PAGE FOR INFORMATION)
A17-804 HAWAII MEMORIAL LIFE PLAN, LTD. (O`AHU)

LAND USE COMMISSION
NOTIFICATION OF LAND USE COMMISSION SITE VISIT
A G E N D A

November 21, 2019 – 1:00 p.m
Hawaii Memorial Park, Ocean View Garden Area
45-425 Kamehameha Highway, Kaneohe, HI 96744

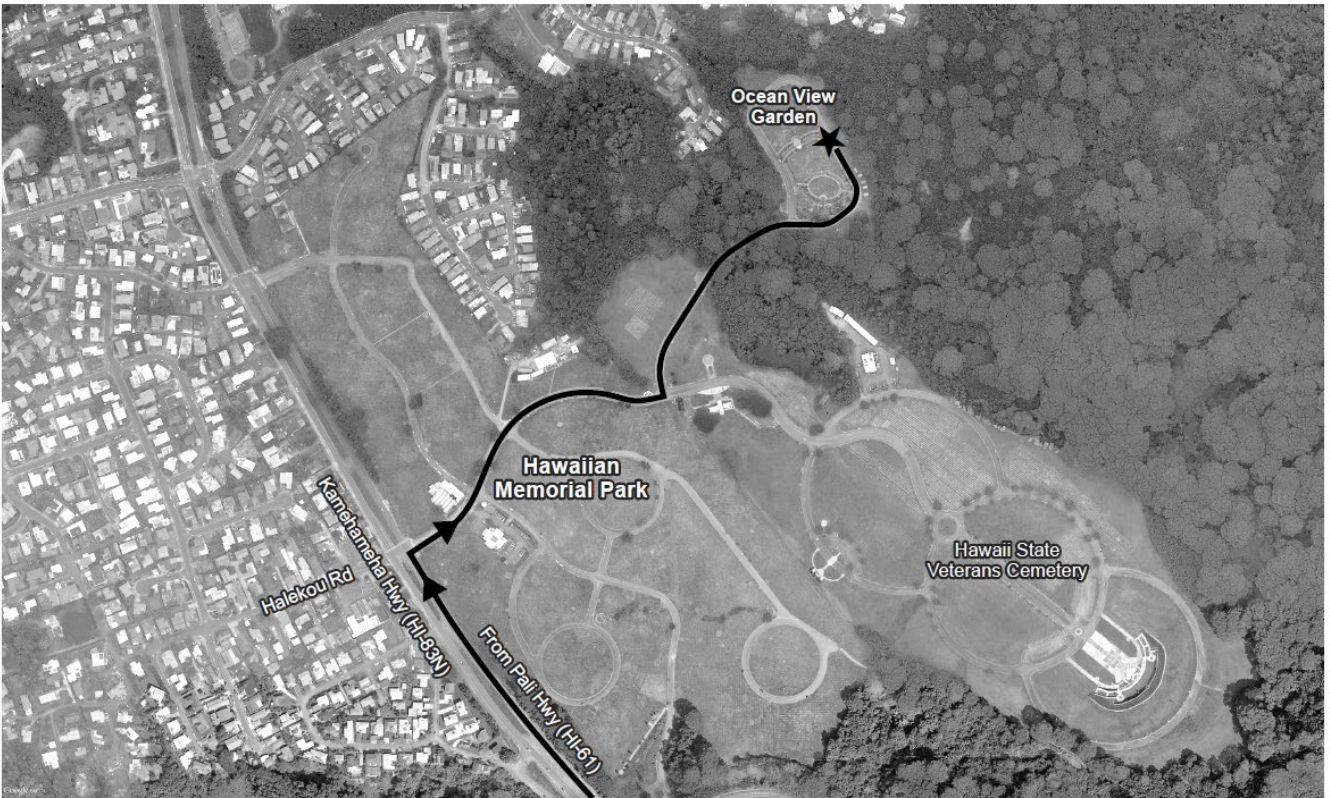
I. CALL TO CONVENE

II. SITE VISIT

A17-804 HAWAII MEMORIAL LIFE PLAN, LTD. (O`AHU)

Consider Petition To Amend The Conservation Land Use District Boundary Into The Urban Land Use District for Approximately 53.449 acres of Land at Kane`ohe, Island of O`ahu, State of Hawai`i TMK (1) 4-5-033: por . 001

III. ADJOURNMENT



From Pali Highway, use the left 2 lanes to turn left onto Kamehameha Highway (HI-83 N). Turn right at Halekou Road to enter Hawaiian Memorial Park.

Follow internal roadway to the Oceanview Garden area's roads end.