

15/10  
II

neg. # HC 30,177







# HYMN

OF

# KAMEHAMEHA I.

WORDS COMPOSED  
BY HIS MAJESTY  
KING KALAKAUA.



MUSIC COMPOSED  
BY  
HENRY BERGER.

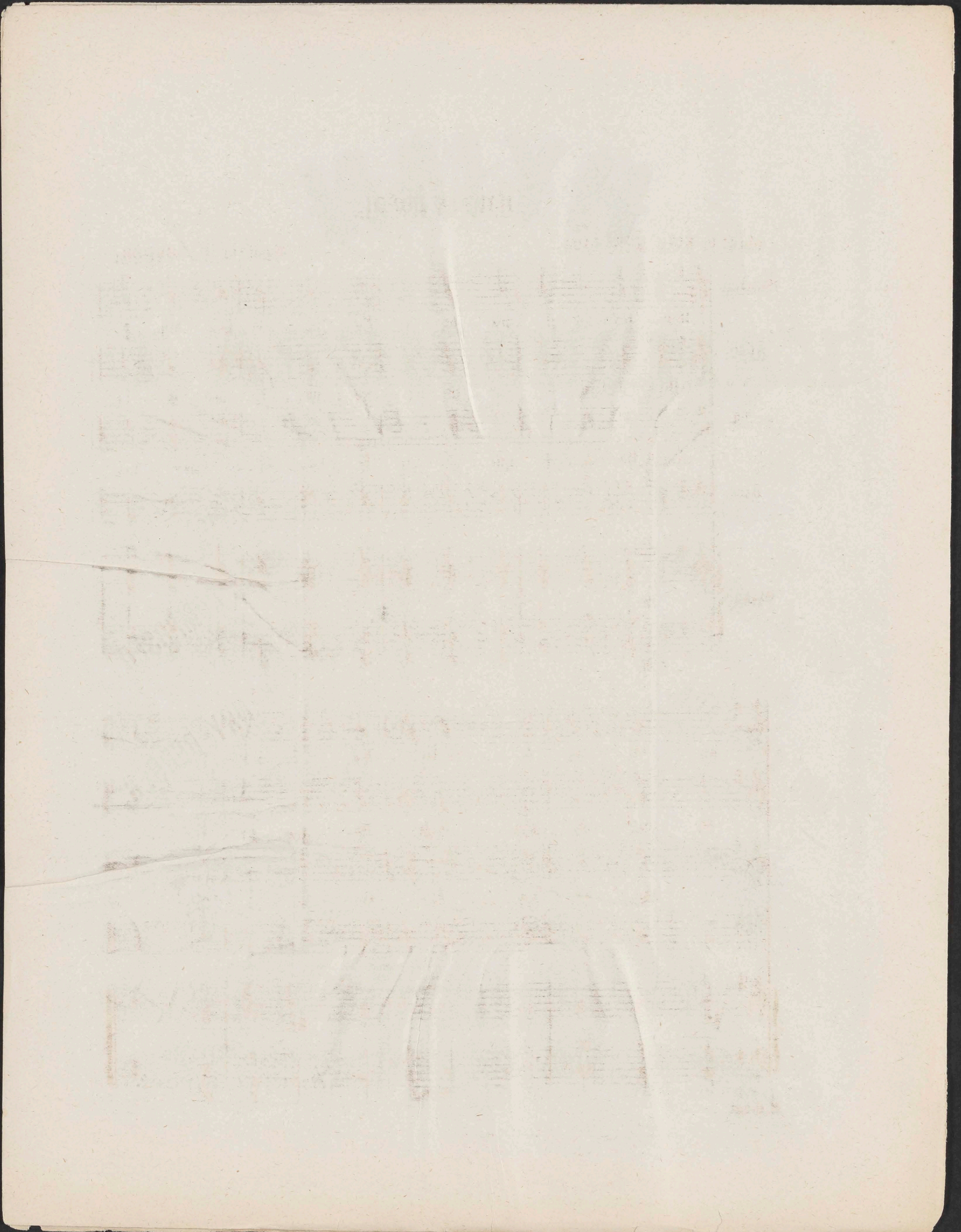
The Photograph is respectfully dedicated  
to His Majesty by Bradley & Rulofson.

SAN FRANCISCO  
623 & 625 Clay St.

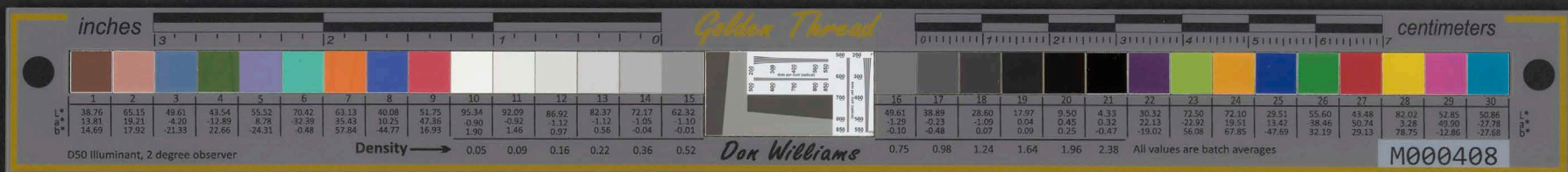
PUBLISHED BY  
J. M. GRAY

PORTLAND, OREGON.  
101 First Street.









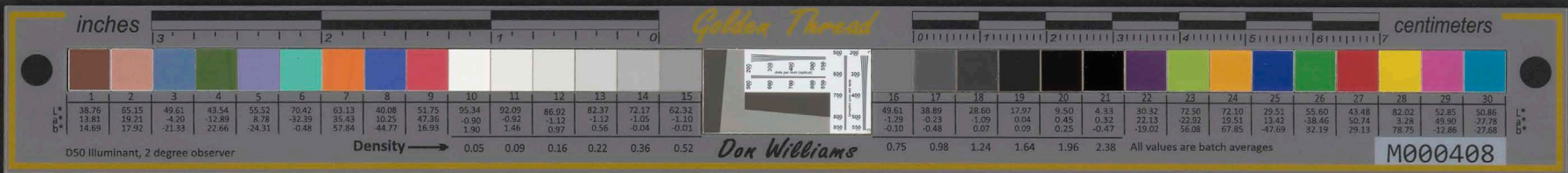
## HAWAII PONOI.

Words by KING KALAKAUA.

Music by H. BERGER.

SOPRANO.





CHORUS.

Ma ku a la ni e Ka me ha - me ha e

Ma ku a la ni e Ka me ha - me ha e

Ma ku a la ni e Ka me ha - me ha e

Ma ku a la ni e Ka me ha - me ha e

Na ka ua e pa - le Me ka i - he. he.

Na ka ua e pa le Me ka i - he. he.

Na ka ua e pa le Me ka i - he. he.

Na ka ua e pa le Me ka i - he. he.



