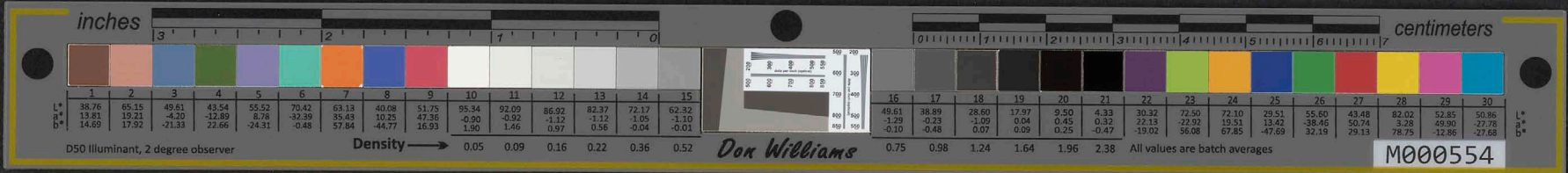


15/3  
II







# KALAKAUA MARCH

COMPOSED BY  
**LOUIS BÖDECKER**



The Photograph is respectfully dedicated  
to His Majesty by Bradley & Rulofson.

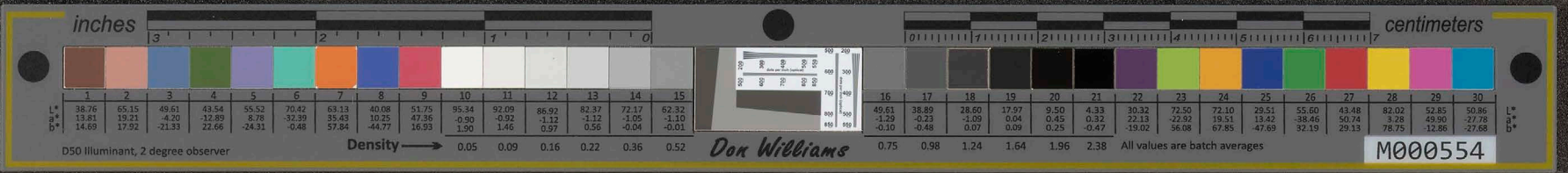
DEDICATED TO  
**KING KALAKAUA**

**SAN FRANCISCO**  
623 & 625 Clay St.

PUBLISHED BY  
**M. GRAY**

**PORTLAND, OGN.**  
101 First Street.









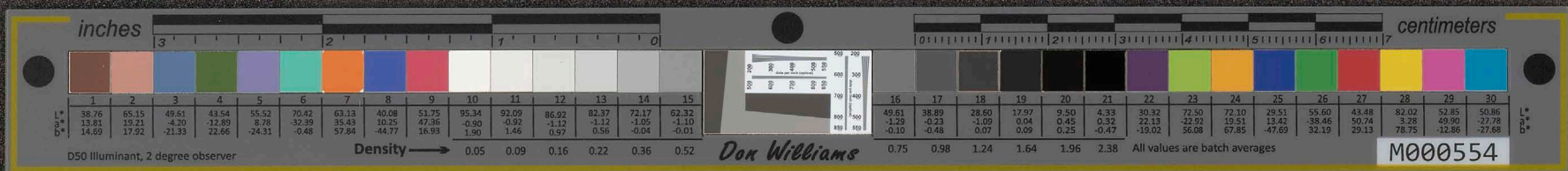
# KALAKAUA.

## MARCH.

Composed by L. BÖDECKER.

Entered according to Act of Congress A D 1874 by M GRAY in the Office of the Librarian of Congress at Washington





4

*ff*

*mf*

*p*

*mf*

*f*

*1.*

*2.*

*Fine*

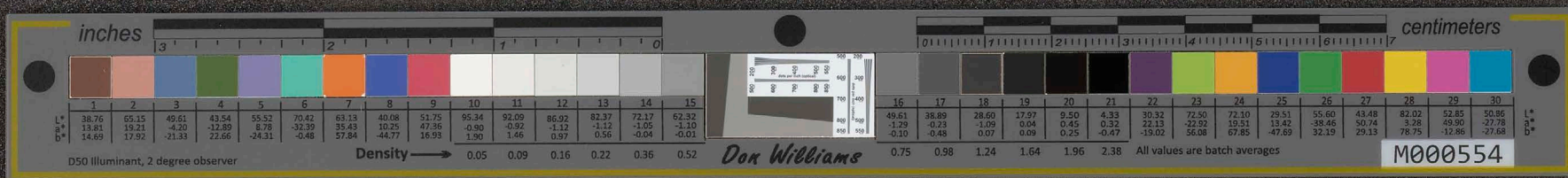




TRIO.

The musical score for the Trio section consists of five systems of piano accompaniment. The first system (measures 1-4) begins with a treble clef, a key signature of two flats (B-flat and E-flat), and a common time signature (C). The music starts with a half note chord in the right hand and a half note in the left hand. Dynamic markings include *mf* (measures 1-2) and *p* (measures 3-4). The second system (measures 5-8) continues the harmonic progression with chords and single notes. The third system (measures 9-12) features a melodic line in the right hand with slurs and ties. The fourth system (measures 13-16) includes a *f* (forte) dynamic marking in measure 14. The fifth system (measures 17-20) concludes the section with a first ending (marked '1.') and a second ending (marked '2.'). The key signature changes to one flat (F major) in the final measures.





6

A musical score for piano, consisting of four systems of music. Each system has a grand staff with a treble and bass clef. The first system begins with a forte (ff) dynamic marking. The music is written in a key with two flats (B-flat and E-flat) and a 3/4 time signature. The notation includes various musical symbols such as notes, rests, and dynamic markings. The fourth system includes first and second endings, marked with "1." and "2." respectively. The score concludes with a double bar line.

March D.C. al Fine.



