



BERGER, CAPT. HENRY
REPORT OF BAND TO GOVERNOR
DOLE

M-11

M-11-1-1



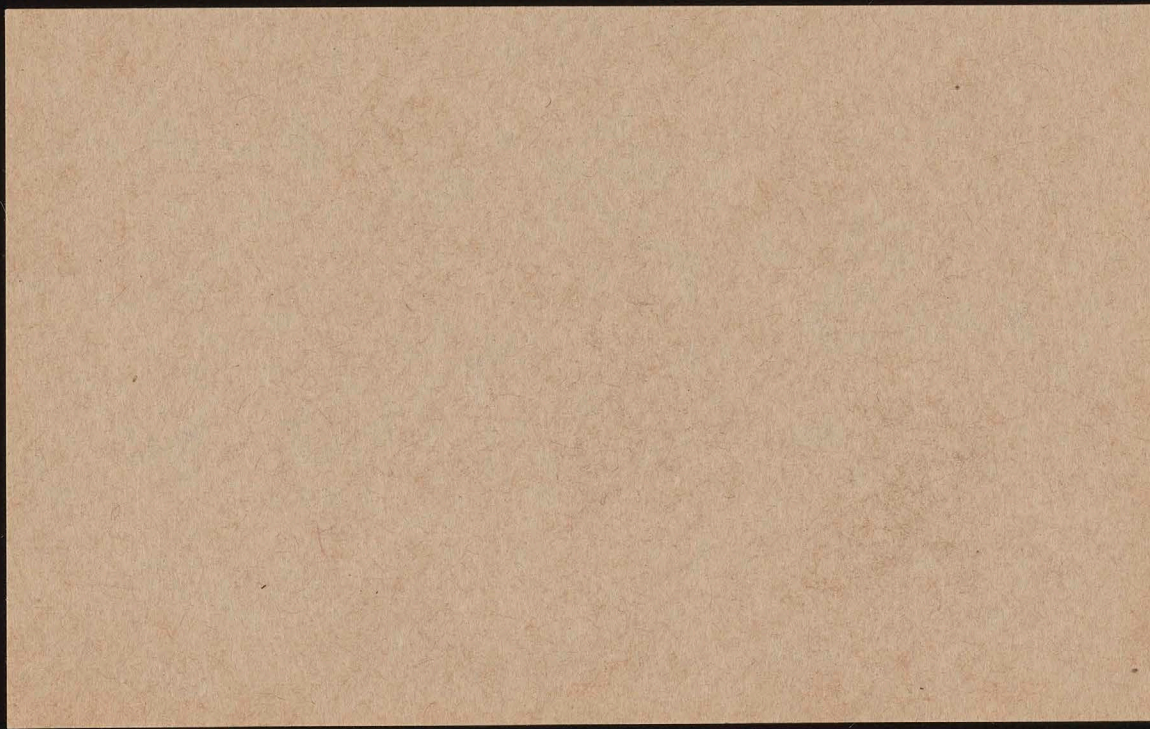
Framed picture of Capt. Berger
with Dole & Filie
is on loan; but is with
the pictures in the picture collection

Golden Thread

Don Williams

inches centimeters

1	2	3	4	5	6	7	8	9	10	11	12	13	14	15	16	17	18	19	20	21	22	23	24	25	26	27	28	29	30	
38.76	65.15	49.81	43.54	55.52	70.42	63.13	40.08	51.75	95.34	92.09	86.92	82.37	72.17	62.32	49.61	38.89	28.80	17.97	9.50	4.33	30.32	72.50	72.10	29.51	55.60	43.48	82.02	52.85	50.86	
L*	13.81	19.21	-4.20	-12.89	8.78	35.43	10.25	47.36	-0.90	-0.92	-1.12	-1.12	-1.05	-1.10	-1.20	-0.33	-0.09	0.04	0.45	0.32	22.13	-22.92	19.51	13.42	-56.46	50.74	3.28	49.90	-27.78	
a*	14.69	17.92	-21.33	22.66	-24.31	57.84	-44.77	16.93	1.90	1.46	0.97	0.56	-0.04	-0.01	-0.10	-0.48	0.07	0.09	0.25	-0.47	-19.02	56.08	67.85	-47.69	32.19	29.13	78.75	-12.86	-27.68	
b*																														
D50 Illuminant, 2 degree observer															All values are batch averages															
Density → 0.05 0.09 0.16 0.22 0.36 0.52															M000408															





Copy.

19

HONOLULU, H. T.

December 31st, 1900.

Honorable Sanford B. Dole,
 Governor of the Territory of Hawaii,
 Honolulu.

Sir:-

At your request I herewith submit my report on the Hawaiian Band, for the year ending December 31st 1900, and also submit my estimates for the coming biennial period.

During the past year the band has played altogether 418 times as follows:

In the Capitol Grounds	77 times.
In Emma Square	68 "
In Thomas Square	28 "
On Makee Island	37 "
At the Hawaiian Hotel	27 "
At departures and on board of Steamers	40 "
On military service	15 "
On National Hollidays, Funerals & Hospitals	51 "
At rehearsals	75 "

	418 "

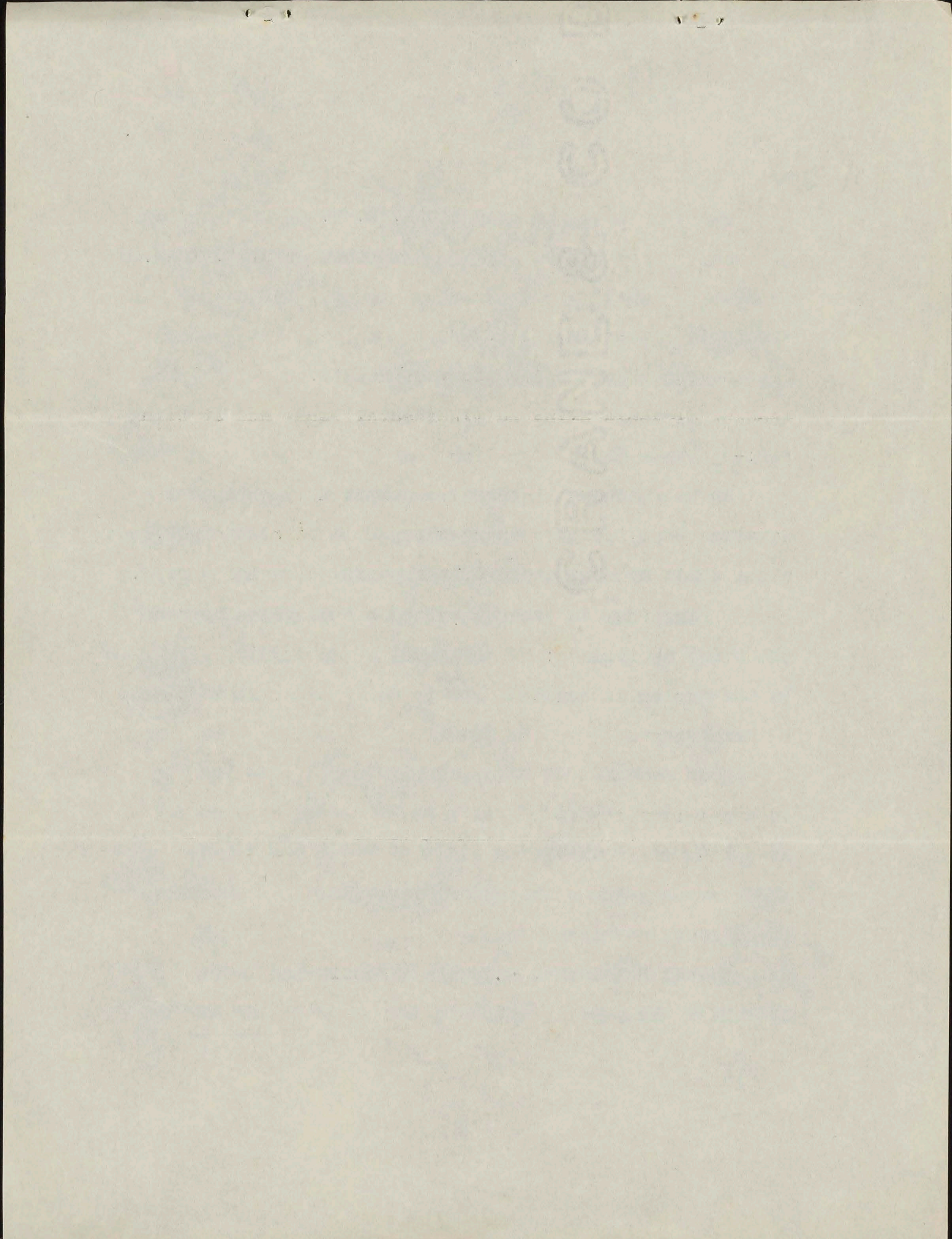
inches centimeters

Golden Thread

1	2	3	4	5	6	7	8	9	10	11	12	13	14	15	16	17	18	19	20	21	22	23	24	25	26	27	28	29	30
38.76	65.15	49.87	43.54	55.52	70.82	63.13	40.08	51.75	95.34	92.09	86.92	82.37	72.17	62.32	49.61	38.89	28.60	17.97	9.50	4.33	30.32	72.55	72.10	29.51	55.60	43.48	82.02	52.85	50.86
13.81	19.21	-4.20	-12.89	8.78	-32.39	35.43	10.25	47.36	-0.90	-0.92	-1.12	-1.12	-1.05	-1.10	1.29	-0.23	-1.09	0.04	0.45	0.32	-21.11	-22.92	19.21	13.42	-38.46	50.74	3.28	49.90	-27.78
14.69	17.92	-21.33	22.66	-24.31	-0.48	57.84	-44.77	16.93	1.90	1.46	0.97	0.56	-0.04	-0.01	-0.10	-0.48	0.07	0.09	0.25	-0.47	-19.02	56.08	67.85	-47.69	32.19	29.13	78.75	-12.86	-27.68
Density → 0.05 0.09 0.16 0.22 0.36 0.52															0.75 0.98 1.24 1.64 1.96 2.38														

D50 Illuminant, 2 degree observer Don Williams All values are batch averages

M000408





The appropriation of \$18,000. for 1900 being insufficient, I have had to pay out of my own pocket \$248. for incidentals such as, extra help, carfare, light, new music, express etc., so as not to cripple the public service. I have also had to incur bills for instruments etc. on account of there being no "Incidental Fund" and it being impracticable to cut down the band or the lady singers, they having pleased the public so much that it seemed advisable to continue their services. I therefore submit these items and ask that an appropriation be made for the same. In order to prevent any such occurrence in the future, I recommend that an annual appropriation of \$1,200. be made as an incidental fund to be entirely separate from the pay roll of the band.

I recommend that an appropriation be made for the coming period for 30 bandsmen at an annual expense of \$14, 580. and two singing girls at \$900. per annum. The \$600. spent in 1900 for the singing girls did not include their services on Sundays.

There having been many requests for the band to visit the other Islands, I recommend an appropriation of \$1,662.
(per)

inches centimeters

Golden Thread

1	2	3	4	5	6	7	8	9	10	11	12	13	14	15	16	17	18	19	20	21	22	23	24	25	26	27	28	29	30
38.76	45.15	49.61	43.54	55.52	70.42	63.13	40.08	51.75	95.34	92.09	86.92	82.37	72.17	62.32	69.61	38.89	28.60	17.97	9.50	4.35	30.32	72.50	72.10	29.51	55.60	43.48	82.02	52.85	50.86
13.81	19.21	-4.20	-12.89	8.78	-32.39	35.43	10.25	47.36	0.90	-0.92	1.12	1.12	1.05	-1.10	1.29	-0.23	-1.09	0.04	0.45	0.32	22.13	-22.92	19.21	13.42	-38.46	50.74	3.28	49.99	27.78
14.69	17.92	-21.33	22.66	-24.31	-0.48	57.84	-44.77	16.93	1.90	1.46	0.97	0.56	-0.04	-0.01	-0.10	-0.48	0.07	0.09	0.25	-0.47	-19.02	56.08	67.85	-47.69	32.19	29.13	78.75	-12.86	-27.68

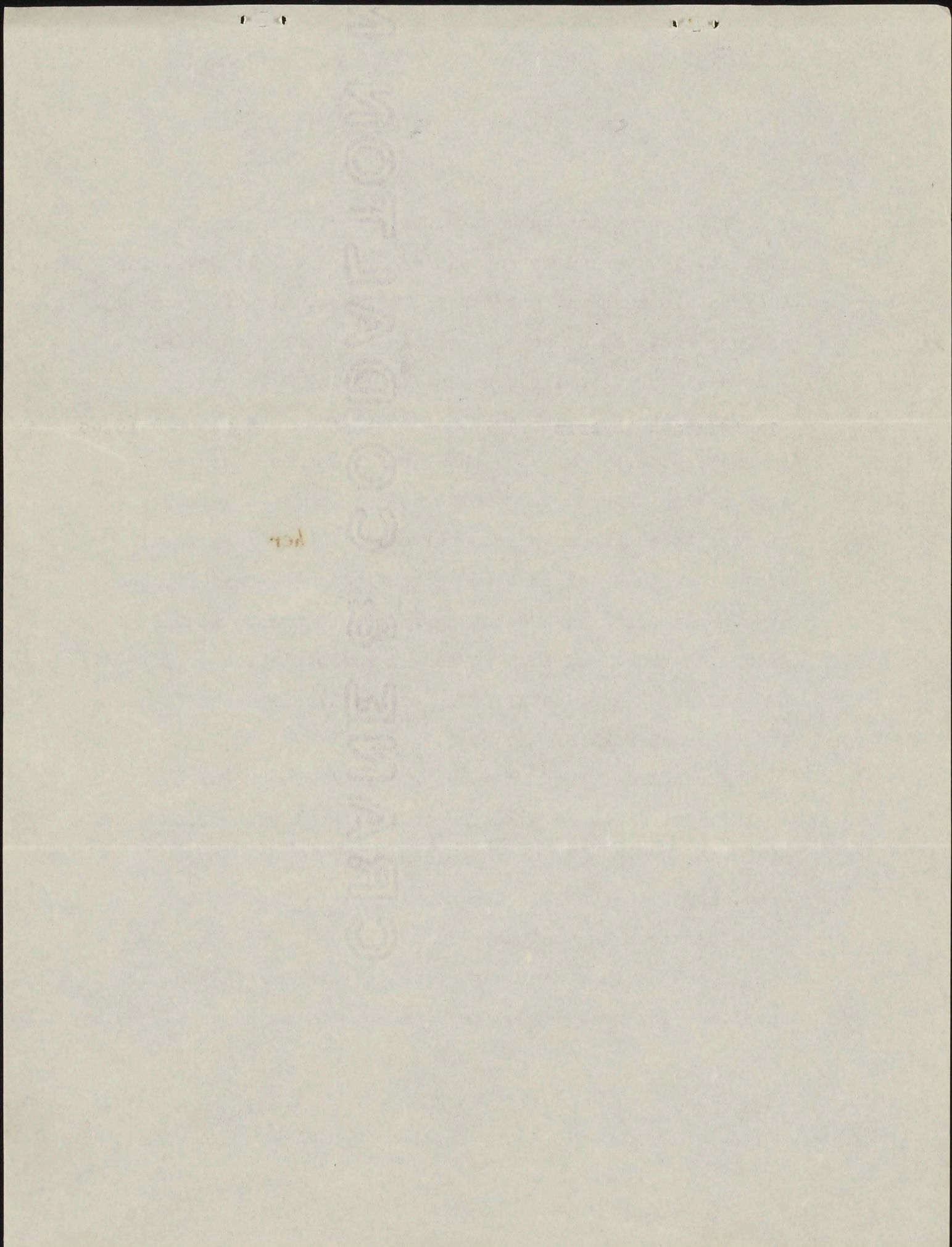
D50 Illuminant, 2 degree observer

Density → 0.05 0.09 0.16 0.22 0.36 0.52

Don Williams

All values are batch averages

M000408





--3--

per annum for three trips at \$554. each i.e. to Hawaii,
to Maui and to Kauai. I base this on the following fig-
ures which represent the amount it has cost in the past:

32 people, steamer & return @ \$10.	\$ 320.00
32 " board & room, 1 week @ \$7.00	224.00
Incidentals to trip	10.00

	554.00

I beg to inform your Excellency that during my 29
years of service as band master, ~~that~~ the band has been
more and more appreciated by the public each year, as is
clearly shown by the increased attendance, and I feel
that the small increase in the estimate submitted for
the improvement of the service, will be greatly valued
by the public.

I have the honor to be, Sir,

Your obedient servant,

(Signed) H. Berger,
Band Master.

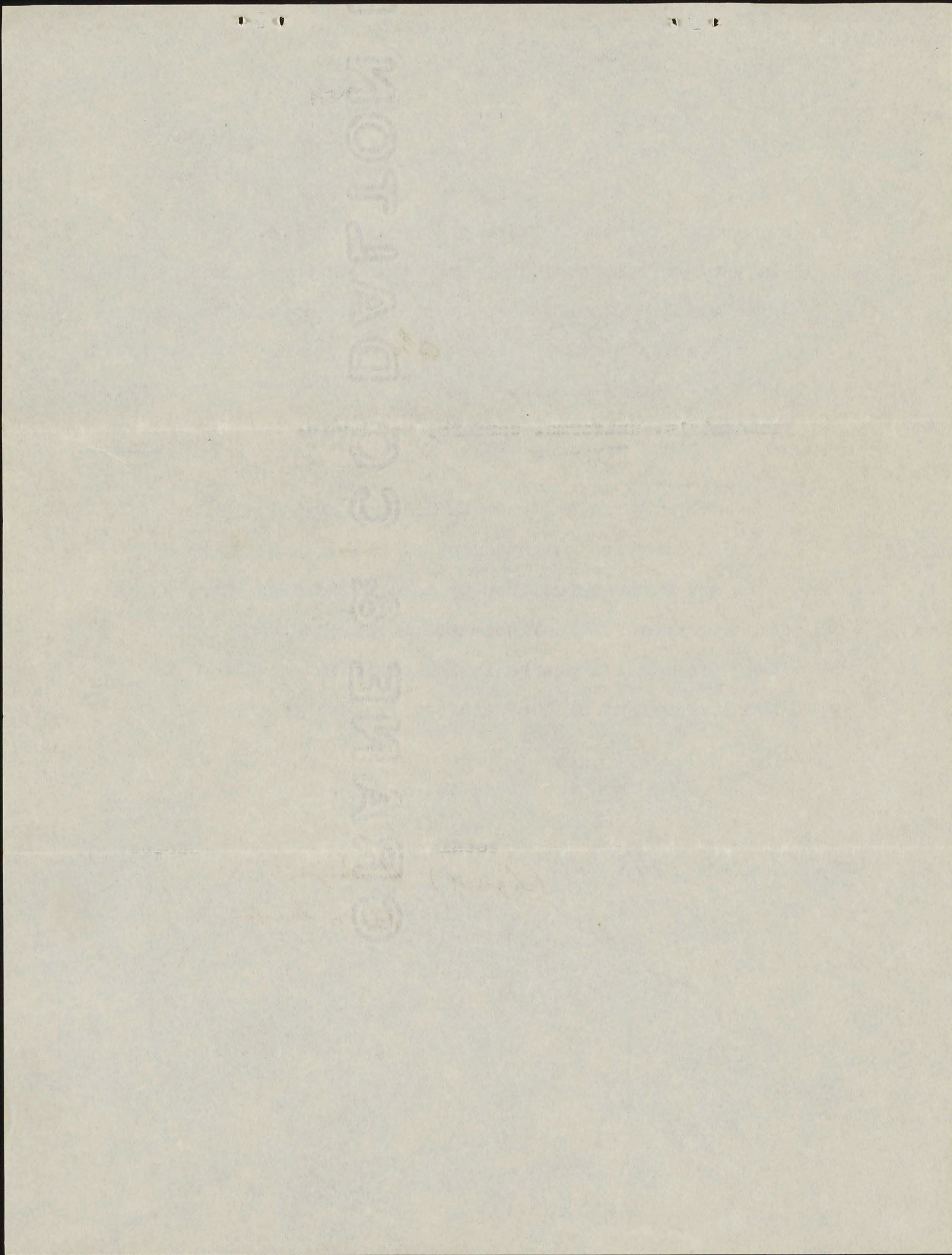
inches Golden Thread centimeters

1	2	3	4	5	6	7	8	9	10	11	12	13	14	15	16	17	18	19	20	21	22	23	24	25	26	27	28	29	30
38.76	65.15	49.87	43.54	55.52	70.42	63.13	40.08	51.75	95.34	92.09	86.92	82.37	72.17	62.32	49.81	38.89	28.60	17.97	9.50	4.33	30.32	72.50	72.10	29.51	55.60	43.48	82.02	52.85	50.86
13.81	19.21	-4.20	-12.89	8.78	-32.39	35.63	10.25	47.36	-0.90	-0.92	-1.12	-1.12	-1.05	-1.10	-1.29	-0.23	-1.09	0.04	0.45	0.32	22.13	-22.92	19.51	13.42	-38.46	30.74	3.78	49.90	-27.78
14.69	17.92	-21.33	22.66	-24.31	-0.48	57.84	-44.77	16.93	1.90	1.46	0.97	0.56	-0.04	-0.01	-0.10	-0.48	0.07	0.09	0.25	-0.47	-19.02	56.08	67.85	-47.69	32.19	29.13	78.75	-12.86	-27.68

D50 Illuminant, 2 degree observer

Density → 0.05 0.09 0.16 0.22 0.36 0.52 *Don Williams* 0.75 0.98 1.24 1.64 1.96 2.38 All values are batch averages

M000408





Estimates for the Biennial Period
beginning January 1st 1901.

Salary of Band Master	\$ 5,640.00
" " 30 Bandsmen	29,160.00
" " 2 Lady Singers	1,800.00
Incidentals, -uniforms, carfare, new music, repairs, express, etc.	2,400.00
3 annual trips to other Islands @ \$554.	3,324.00

Expenses incurred over appropriation
for year ending December 31st, 1900.

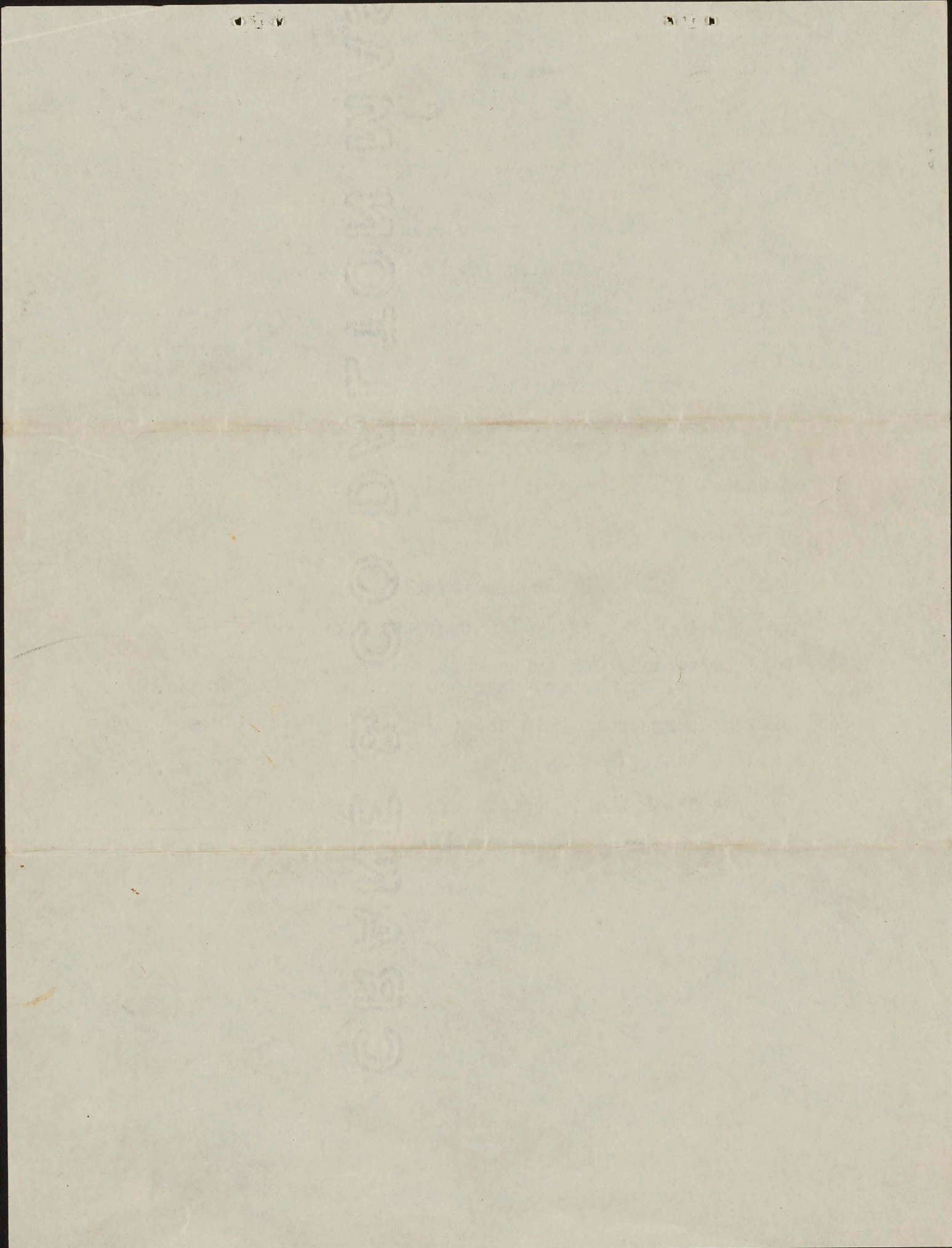
Paid personally for extra help, carfare, light, new music, express, etc.	\$ 246.00
Bill of Bergstrom Music Co. (musical goods)	225.00
" " Hawaiian News Co. " "	50.00
" " Chock Look, (cloth ofr uniforms)	35.00
Total	556.00

inches Golden Thread centimeters

1	2	3	4	5	6	7	8	9	10	11	12	13	14	15	16	17	18	19	20	21	22	23	24	25	26	27	28	29	30	
38.76	65.15	49.61	43.54	55.52	70.42	68.13	40.08	51.75	95.34	92.09	86.92	82.37	72.17	62.32	49.61	38.89	28.60	17.97	9.50	4.33	30.32	72.50	72.10	29.51	55.60	43.48	82.02	52.85	50.86	
13.81	19.21	4.20	-12.89	8.78	32.39	35.43	10.25	47.56	-0.90	-0.92	-1.12	-1.12	-1.05	-1.10	-1.29	-0.23	1.09	0.04	0.45	0.32	22.13	-22.02	19.51	13.42	-38.46	50.74	3.28	49.90	-27.78	
14.69	17.92	-21.33	22.66	-24.31	-0.48	57.84	-44.77	16.93	1.90	1.46	0.97	0.58	-0.04	-0.01	-0.10	-0.48	0.07	0.09	0.25	-0.47	-19.02	56.08	67.85	-47.69	32.19	29.13	78.75	-12.88	-27.68	
Density → 0.05 0.09 0.16 0.22 0.36 0.52															0.75	0.98	1.24	1.64	1.96	2.38	All values are batch averages									

Don Williams

M000408





CAPT. HENRY BERGER'S COLLECTION

March 24, 1930.

Filed in Archives of Hawaii

- ✓ No. 1 Collection of special compositions of Capt. Berger (Bound in Tapa)
- (A) 'My Country 'Tis of Thee - adapted to Hawaii Pono
 - (B) 'Queen Liliuokalani
 - (C) 'March - Republic of Hawaii (S.B.Dole)
 - (D) 'March - Governor Carter
 - missing → (E) Symphony of Blues at Waikiki (There is another copy in one of the bound vols. in this case) 3/2/61
 - (F) 'March - Governor Judd (1929)
Last composition of Capt. Henry Berger.
- ✓ No. 2 Sheaf of Hawaiian Music composed by Capt. Berger at San Jose, California, 1926 (original scores)
- No. 3 Various Hawaiian Compositions by Capt. Berger (original scores)
- (A) Nani Ka Pua - orchestration
 - (B) Kuu Pua Paakalani
 - (C) The Old Plantation
- No. 4 Compositions by Capt. Berger
- No. 5 Orchestrations for Hawaiian Band for Grand Operas.
- No. 6 Composition of original score of Souvenir du Paris Quadrille by Capt. Berger, Aug. 19, 1868 at Berlin
- No. 7 Drawing of Berger by Ned Steele about 1913.
- No. 8 Framed photograph of Capt. Berger (1913)
- No. 9 Enlarged framed photograph of Royal Hawaiian Band & Berger - taken on front steps of Iolani Palace about _____
- No. 10 Framed photograph re presentation of Sonora Radio Set to Capt. Henry Berger, by friends including Gov. W.R. Farrington. (1928)
- No. 11 Photograph of Capt. Berger with Capt. Amasiu and Hawaiian Band about 1928.
- No. 12 Two (2) photographs of Berger directing Municipal Band of San Francisco at Golden Gate Park about _____

inches

Golden Thread

centimeters

	1	2	3	4	5	6	7	8	9	10	11	12	13	14	15	16	17	18	19	20	21	22	23	24	25	26	27	28	29	30
L*	38.76	65.15	49.81	43.54	55.52	70.42	63.13	40.08	51.75	95.34	92.09	86.92	82.37	72.17	62.32	49.61	38.89	28.60	17.97	9.50	4.33	20.32	72.50	72.10	29.51	55.60	43.48	82.02	52.85	50.86
a*	13.81	19.21	-4.20	-22.89	8.78	-32.39	35.43	10.25	47.56	-0.30	-0.92	-1.12	-1.12	-1.05	-1.10	-1.29	-0.23	-1.09	0.04	0.45	0.32	22.13	22.92	19.51	13.42	-38.46	50.74	3.28	49.90	-27.78
b*	14.69	17.92	-21.33	22.66	-24.31	-0.48	57.84	-44.77	16.93	1.90	1.46	0.97	0.56	-0.04	-0.01	-0.10	-0.48	0.07	0.09	0.25	-0.47	-19.02	56.08	67.85	-47.69	32.19	29.13	78.75	-12.86	-27.68

D50 Illuminant, 2 degree observer

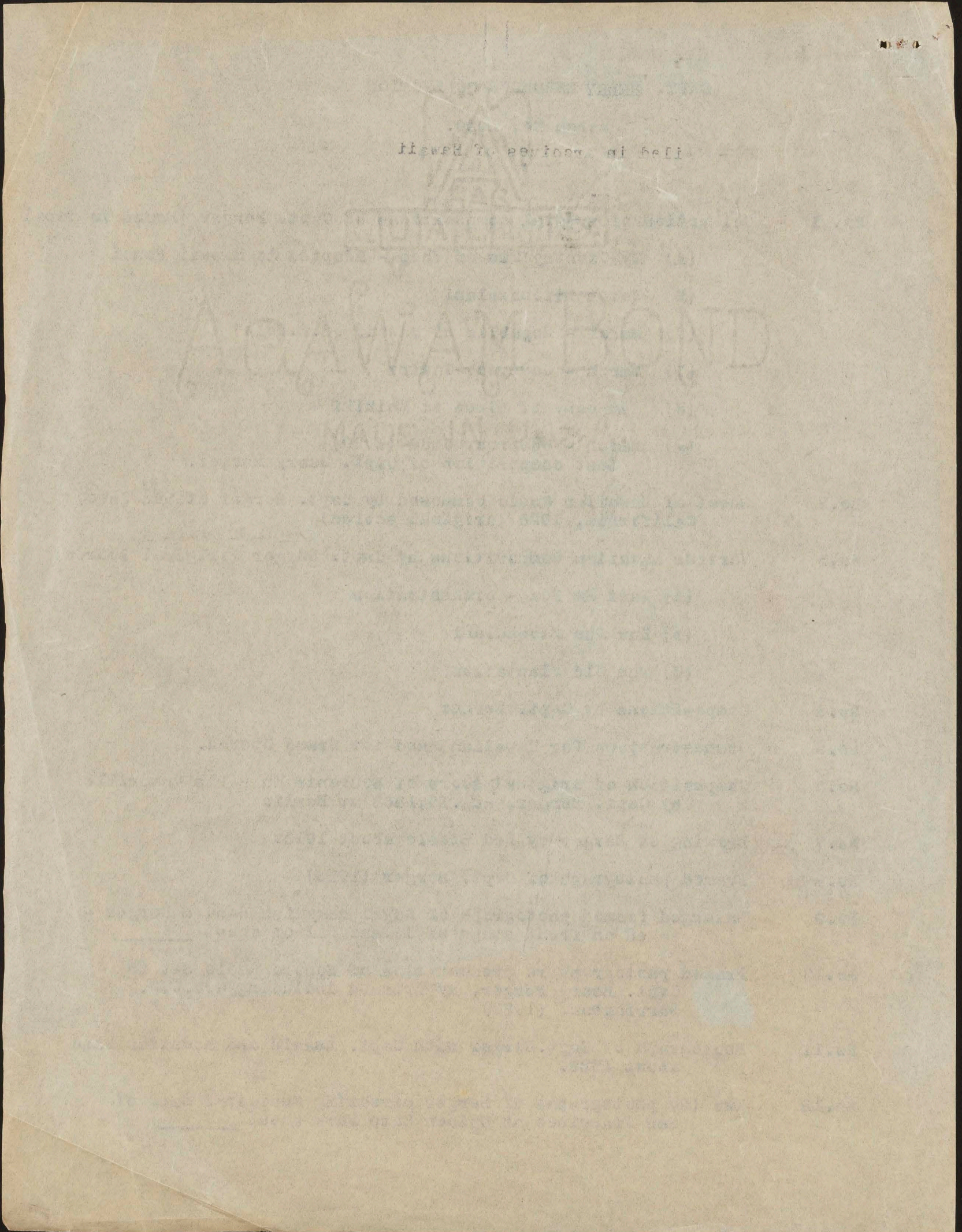
Density →

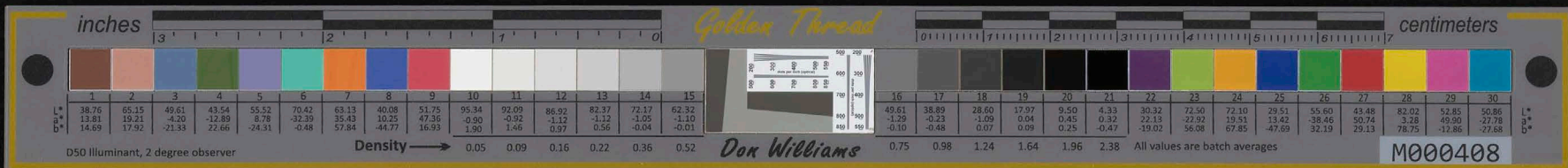
0.05 0.09 0.16 0.22 0.36 0.52

Don Williams

0.75 0.98 1.24 1.64 1.96 2.38 All values are batch averages

M000408





Capt. Berger's Collection - 2 -

- No. 13 Royal Hawaiian Band and Capt. Berger 1918.
- No. 14 Capt. Berger and Hawaiian Band on front steps of Iolani Palace - 1898.
- No. 15 Resolution by the Board of Supervisors of Honolulu and the Mayor John C. Lane - accepting resignation of Capt. Berger as bandmaster after 43 years of service. June 30, 1915.
- No. 16 Framed resolution by House of Representatives of the Territory of Hawaii re appreciation of Capt. Berger's service as Bandmaster of the Hawaiian Band from 1872; dated Mar. 7, 1915.
- No. 17 Framed photograph - Prussian Music Corps at Paris Exhibition July 21, 1867. Capt. Berger a member of the band.
- No. 18 Framed photograph - Prussian Music Corps at Berlin 1908. Capt. Berger not in picture.
- No. 19 Typewritten copy of report of Capt. Berger to Sanford B. Dole, Governor of Hawaii. Dated Dec. 31, 1900.
- No. 20 Drum Major's Baton of the Old Royal Hawaiian Band. Top of Baton composed of silver with coat-of-arms and Bands' motto.
- No. 21 Koa wood Baton of Capt. Berger. Presented to him by members of Hawaiian Band Aug. 14, 1914. Gold cap.

-----#####-----

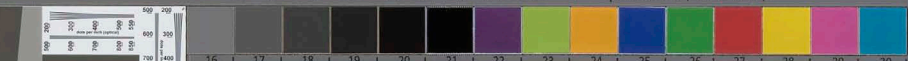
Below is property of Mrs. Rose M. Berger, widow of Capt. Henry Berger and their daughter Lehua Margaret Berger Lindsey; both pieces filed in Archives of Hawaii for safety but subject to their order at anytime and not property of the Archives.

- No. 22 Scrapbook of Capt. Berger re pictures of Berger - Hawaiian Band and other newspaper clippings.
- No. 23 Framed enlarged photograph showing left to right:
Hon. Sanford B. Dole - former President & Governor of Hawaii.
Capt. Henry Berger - Bandmaster
Ex-Queen Liliuokalani
Governor L. E. Pinkham of Hawaii.
Picture taken in Honolulu 1917.

inches

Golden Thread

centimeters



L*	38.76	65.15	49.61	43.54	55.52	70.42	63.13	40.08	51.75	95.34	92.09	86.02	82.37	72.17	62.32
a*	13.81	19.21	-4.20	-12.89	8.78	-32.39	35.43	10.25	47.36	-0.90	-0.92	-1.12	-1.12	-1.05	-1.10
b*	14.69	17.92	-21.33	22.66	-24.31	-0.48	57.84	-44.77	16.93	1.90	1.46	0.97	0.56	-0.04	-0.01

16	17	18	19	20	21	22	23	24	25	26	27	28	29	30
49.61	38.89	28.80	17.97	9.50	4.33	30.32	72.50	72.10	29.51	55.60	43.48	82.02	52.85	50.86
-1.29	-0.23	-1.09	0.04	0.45	0.32	22.13	-22.92	19.51	13.42	-38.46	50.74	3.28	49.90	-27.78
-0.10	-0.48	0.07	0.09	0.25	-0.47	-19.02	56.08	67.85	-47.69	32.19	29.13	78.75	-12.86	-27.68

D50 Illuminant, 2 degree observer

Density → 0.05 0.09 0.16 0.22 0.36 0.52

Dox Williams

0.75 0.98 1.24 1.64 1.96 2.38 All values are batch averages

M000408

