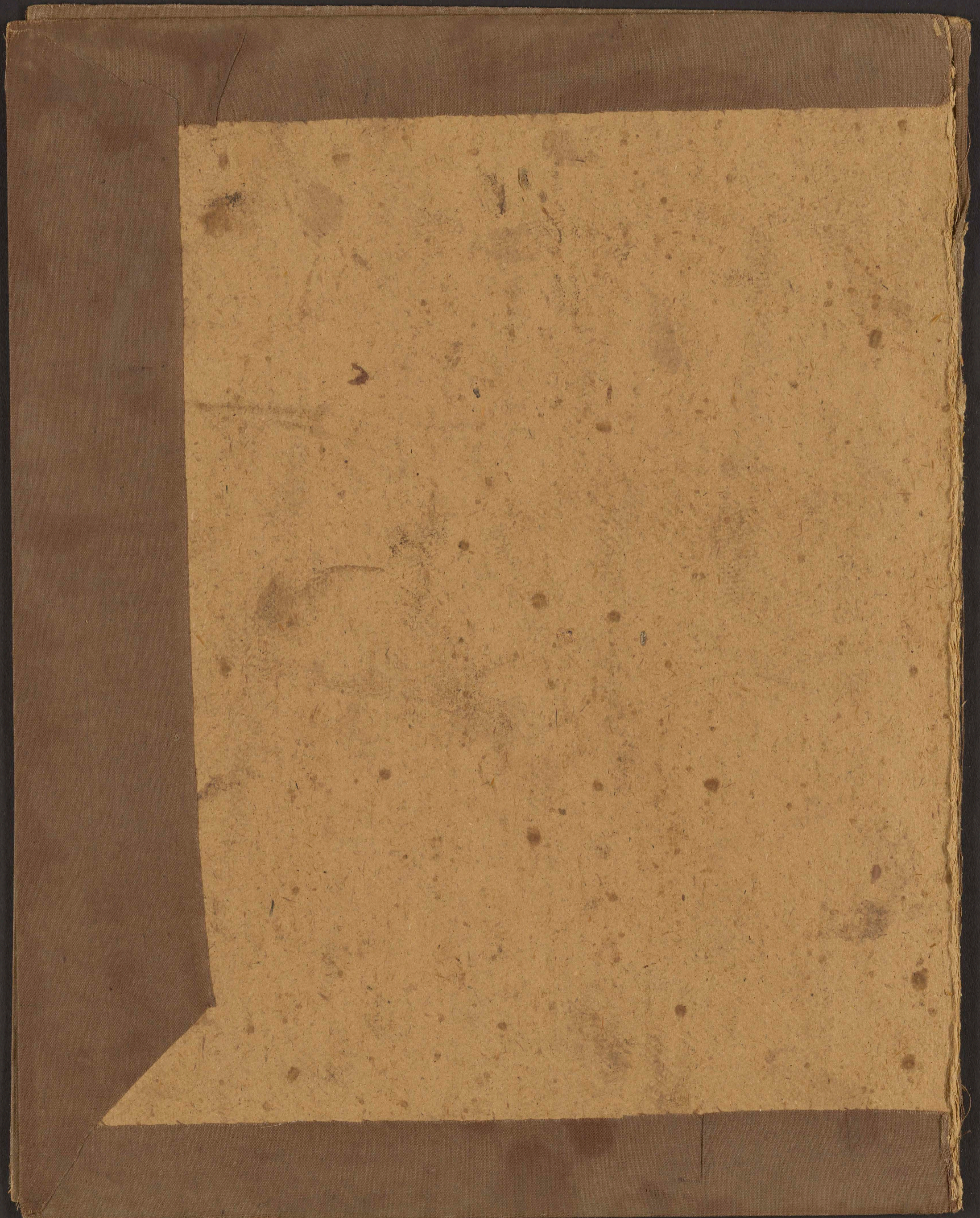
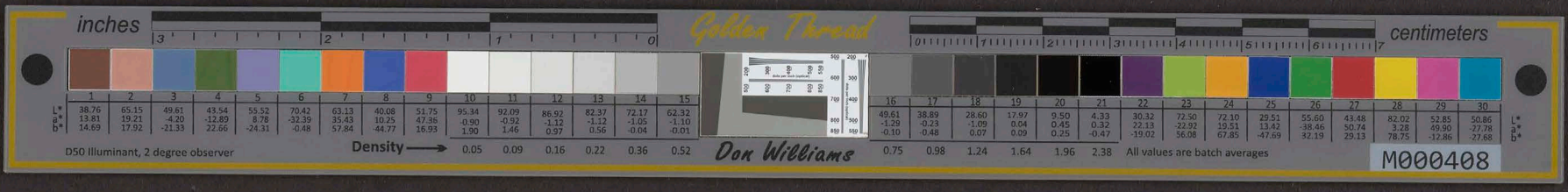


COMPOSITIONS by Capt. Berger #4

M-11-2-2





No. 1. Grand March 1869-1919 by H. Berger. Leipzig. Leipzig Conservatory. Dedicated to the American Band.

The first system of handwritten musical notation, consisting of two staves. The upper staff is in treble clef and the lower staff is in bass clef. The music is written in a 2/4 time signature and begins with a key signature of one flat (B-flat).

The second system of handwritten musical notation, consisting of two staves. The notation continues from the first system, showing various rhythmic patterns and melodic lines.

The third system of handwritten musical notation, consisting of two staves. This system includes some slurred passages and rests.

The fourth system of handwritten musical notation, consisting of two staves. A 'repeat' sign is written above the lower staff, indicating a section to be repeated.

The fifth system of handwritten musical notation, consisting of two staves. The notation continues with various rhythmic and melodic elements.

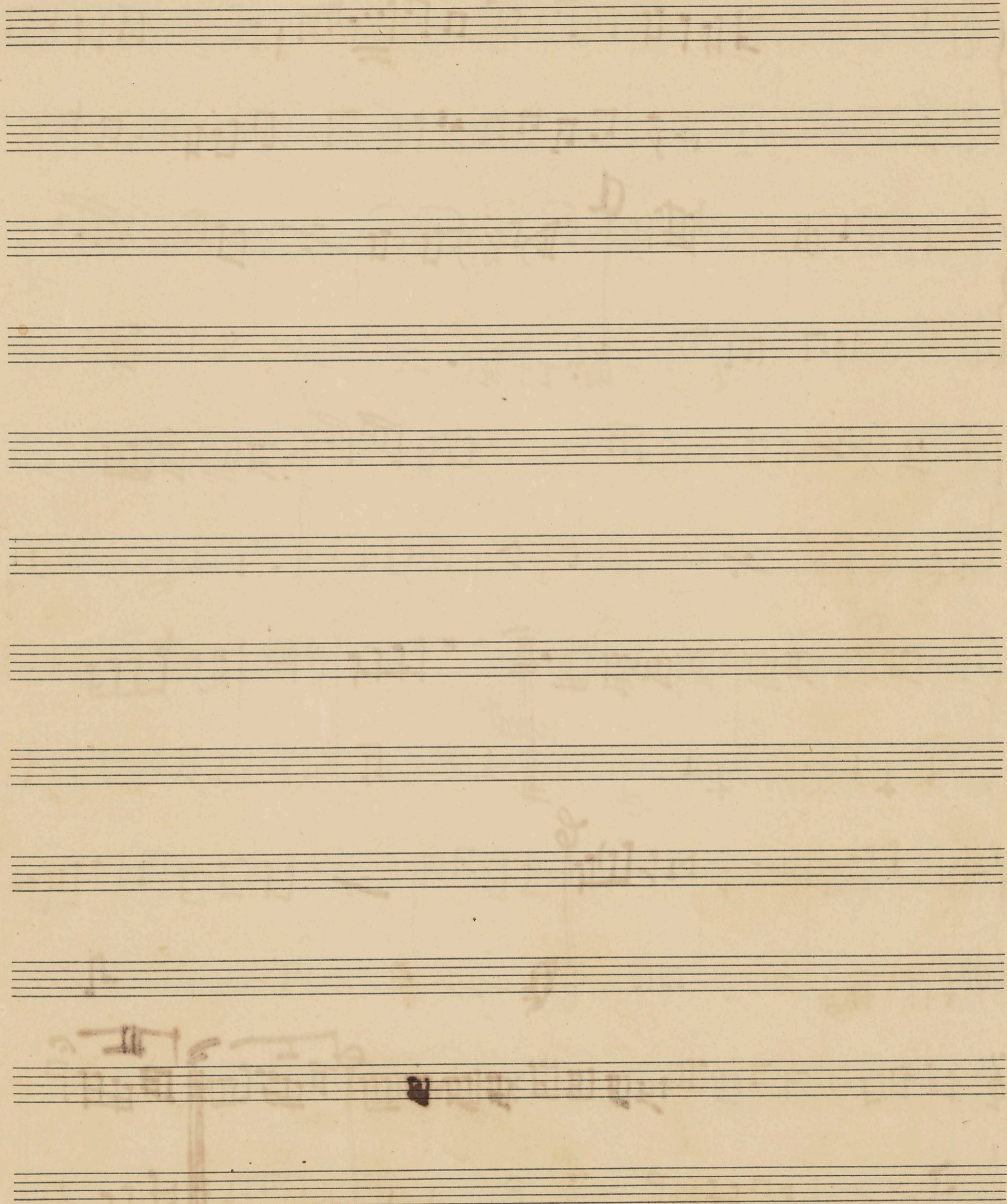
The sixth system of handwritten musical notation, consisting of two staves. This system includes a 'mf' (mezzo-forte) dynamic marking and another 'repeat' sign.

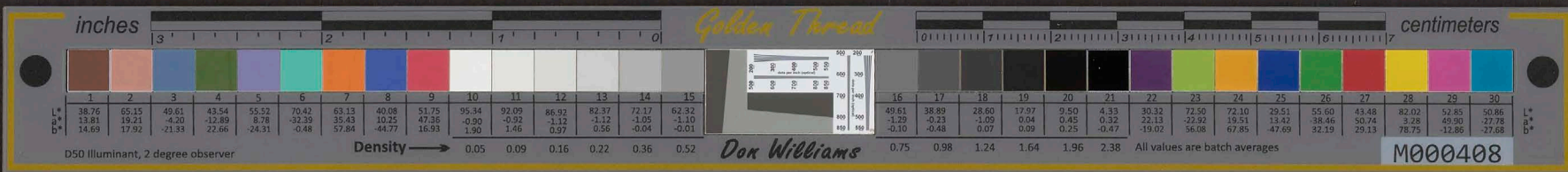


Trio Festival March 1869-1919 by *Berger*
Slow March

Handwritten musical score for piano and violin. The score is written on ten systems of staves. The first system includes a treble clef, a key signature of one flat (B-flat), and a common time signature. The music is a waltz in 3/4 time. The score includes various musical notations such as notes, rests, and dynamic markings. There are several annotations in the score: 'Vamp' is written above the first system, 'Vamp 3' above the second system, 'triplets' above the fifth system, and 'Loda' above the sixth system. The word 'repeat' is written at the end of the fourth system and above the first staff of the sixth system. The score concludes with a double bar line and a final cadence. The date 'Berger May 28 1927' is written in the right margin of the final system.







No. 1 Grand March. 1864 - 1919. Dedicated to the American Band by *Piccolo*

Marcia Maestri

Handwritten musical score for various instruments including Flute (Fl), Clarinet (Cl), Bassoon (Bs), Trumpet (Tr), Trombone (Tbn), Horn (Hr), and Cello (Cello). The score consists of multiple staves with complex rhythmic patterns and dynamic markings such as *staccato*, *ritard.*, *rit.*, *ritard. rit.*, and *ritard.*. The music is written in a key with one sharp (F#) and a common time signature (C). The notation includes numerous beamed notes, slurs, and articulation marks.

Tristano ritar Berger Honolulu June 11/19



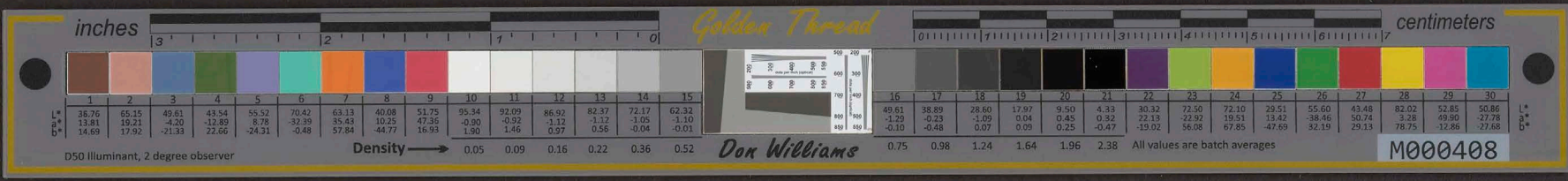
No 2 Polonaise: Kakana, by Beyer.
Ala Polacca

Piccolo

Handwritten musical score for Piccolo, consisting of 11 staves. The score includes various musical notations such as treble clefs, key signatures (one sharp), time signatures (3/4), and dynamic markings like *manava*, *f*, *p*, *marcato*, and *Solo*. There are also some markings that appear to be 'Leo' written vertically. The lyrics are written in a stylized script, possibly representing a specific dialect or a set of notes. The piece concludes with a double bar line and a final key signature change.

Manai Manai
by Beyer





No. 1. Grand March, 1869-1919

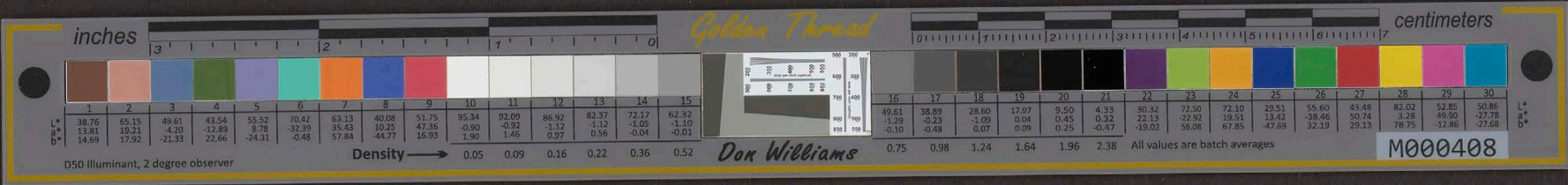
Dedicated to the Hawaiian Bands by H. Berger.

Oboe or E. Clarinet

Marcia Maestoso

Handwritten musical score for Oboe or E. Clarinet. The score consists of ten staves of music. The first staff is labeled 'Lohi' and the second 'Leo'. The music is in 2/4 time and features various dynamics such as *pp*, *p*, *f*, and *pp sostenuto*. There are also markings for *ritar* and *Solo*. The notation includes notes, rests, and slurs. The piece concludes with a double bar line and the word 'Pan' written above the final staff.

H. Berger Honolulu Oct. 1919.



No 2 Polonaise Kahana by H. Berger

Oboe
or Clarinet

Time
manana
Leo
Leo
Time
Trio
Leo
Time
Leo

Leo nuu Leo
pot nane p
p
fr
Solo
fr fr
staccato Ruha
mua

Hawaiian March No 3
by H. Berger

No 3
Leo
Leo
Trio
Leo
Leo
Leo

Leo marc.
Leo marcato
mua



H. Berger
Oct 1910



No. 1. Grand March. 1864-1914. Dedicated to the Hawaiian Band by Berger, E. Clark
March Maestro

Handwritten musical score for a Grand March. The score consists of ten staves. The first staff is labeled 'Loni' and is in the key of C major with a common time signature. The second staff is labeled 'Leo' and is in the key of G major. The third staff is labeled 'Loni' and 'Leo' and is in the key of G major. The fourth staff is labeled 'Leo' and is in the key of G major. The fifth staff is labeled 'Loni' and 'Leo' and is in the key of C major. The sixth staff is labeled 'Leo' and is in the key of G major. The seventh staff is labeled 'Leo' and is in the key of G major. The eighth staff is labeled 'Leo' and 'Loni' and is in the key of G major. The ninth staff is labeled 'Leo' and is in the key of G major. The tenth staff is labeled 'Loni' and is in the key of G major. The score includes various musical notations such as notes, rests, dynamics (p, mp, mf, f, cresc.), and articulations. There are also some handwritten annotations and markings throughout the score.

Don
Berger. Honolulu June 11/14.

ritar

miu loa



No 2. Polonaise: Kahana. by Berger. Ala Polacca

E♭ Clarinet.

Time Leo *fr Leo nui*

Time *fr nui* *po nahe*

Leo *p* *p* *fr nui*

Time *fr nui* *fr* *p Solo*

Leo *p*

Time *fr Leo nui* *marcato*

Leo *fr* *marcato*

Time Leo

Leo *Leo*

Leo *fr* *Leo*

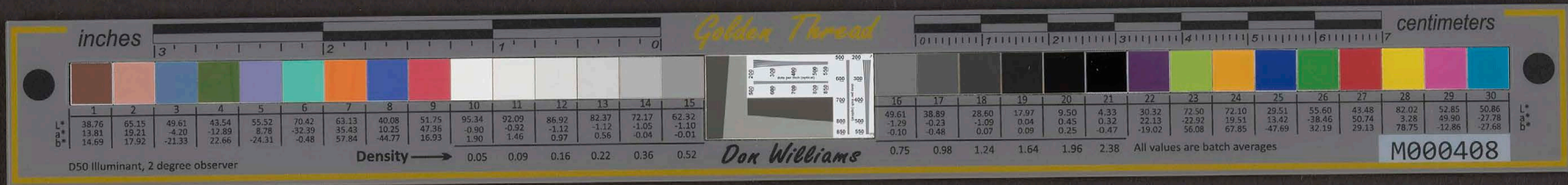
Leo *ova Luna ad* *Leo*

Leo *ova Luna ad* *Leo*

Canvases Made by Leitch & Co. by Berger

De Berger
Hanna
Amuly
Oct 1919





No. 1. Grand March: 1869-1919, dedicated to the Hawaiian Band by *J. Berger* A.B. Clark

Marcia maestoso
Lohi
Leo *fr. marcato*

Leo *fr. marcato*
Lohi
Leo *p naha*

Leo *p staccato Ruha nokou*

Leo *fr. marcato*
Lohi
Leo *fr. marcato Ruha*

Leo *fr. marcato*
Lohi
Leo *fr. marcato Ruha*

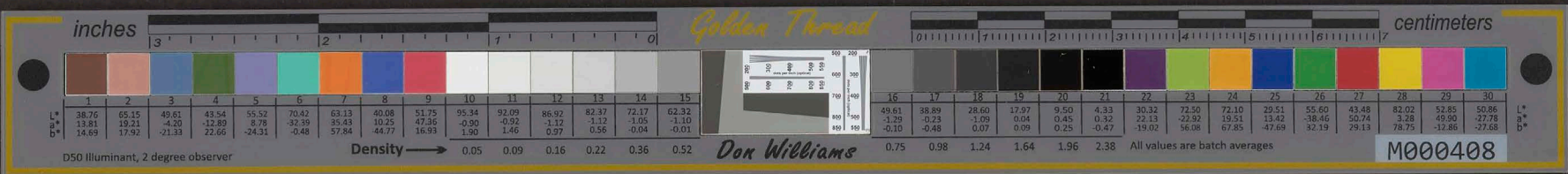
Lohi
Lohi *p naha*

Leo *fr. marcato*

Leo *fr. marcato*

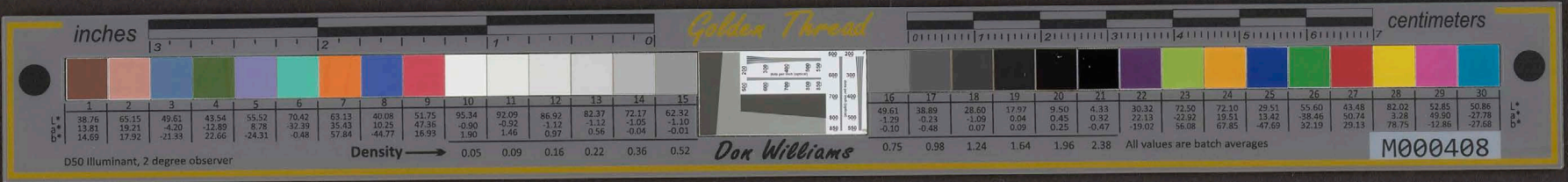
Leo *fr. marcato*
Lohi *Ruha*
Lohi *Ruha*

HB
April 1919



No. 1. Grand March: 1869 - 1919 Dedicated to the Hawaiian Bands by *B. Clark*

Marcia Maestros
Lohi *f marcato* *Kuha nui*
Leo mi *f*
Leo Lohi *f*
Leo *p* *naha*
Leo *p* *naha* *stacc* *Kuha*
Leo *p* *Leo*
Leo mi *f*
Leo *f* *Leo mi*
Leo mi *f*
Leo *f* *mi*
Leo mi *f* *Leo mi* *una* *stacc*
Trio *p* *naha*
Leo *p* *Leo*
Leo *p* *Kuha*
Leo *p* *mi* *stacc*
Leo mi *f* *mi* *stacc* *mae* *Loa*
Leo *f* *Leo* *Kuha* *Leo* *ritar* *San* *FB* *June 1919*



No. 2. Polonaise: Kahana. by Berger. L.B. Clarinet.
a la Polacca

Time
manana Leo fu Leo mi Kuha
Leo fu mi p nape p maikai
Time p maikai p fu mi Leo
Leo fu mi Leo p nape p nape p
Time p nape maikai p
Leo fu Leo mi fu Kuha fu Kuha
Time fu mi fu mi
Time Leo Leo
Time Leo Leo
Time Leo Leo
Time Leo Leo

Tavaian Mami, No. 2. by Berger.





No. 1. Grand March. 1869 - 1919. Dedicated to the Hawaiian Family by Berger. J. B. Clark.

Musical score for Grand March, featuring multiple staves with handwritten notes, lyrics like 'Leo nui', 'Lohi', and 'Ruhā nui', and dynamic markings such as 'p' and 'f'.

Don Williams
M000408



No. 2. Polonaise: Kahana. by Berger.

3 B Clarinet

a la Polacca

Time Manava Leo f# Leo nui Ruha f# nui

Leo f# nui p naha Leo maikai nui

Time Leo p p p p p f# nui f#

Time f# Leo nui f# f# p naha p

Leo p naha Leo f# f# p f# p

Time f# Leo nui f# nui f# nui f#

Leo f# Leo nui f# nui f# nui

Time Leo Ruha Leo Ruha Leo Ruha

Leo Ruha

Lanvaia Maui
only
Berger.





No. 1 Grand March: 1869-1919. *dedicated to the Hawaiian Band by J. Berger*
 Marcia Maestro Solo Bassoon or Baritone Sax

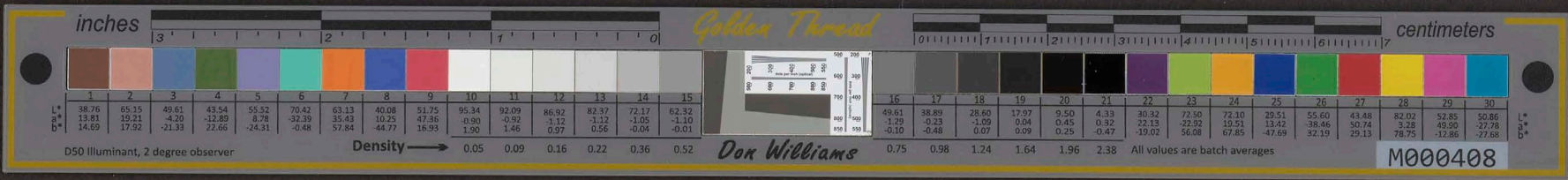
Handwritten musical score for Bassoon or Baritone Sax. The score consists of 12 staves of music, each beginning with a treble clef and a key signature of two flats (B-flat and E-flat). The music is written in a common time signature (C). The notation includes various rhythmic values, accidentals, and dynamic markings such as *fr marcato*, *Ruha*, *pp stacc*, *p*, *ritar*, and *Solo*. The score concludes with a double bar line and the word *Fine*. In the bottom right corner, there is a signature: *J. Berger* and the location *Out of Honolulu*.



No. 2. Polonaise. Kahana. by H Berger. E♭ Alto Sax
Ala Polacca

Handwritten musical score for E♭ Alto Saxophone. The score consists of 12 staves of music. The first staff is labeled 'Timp' and contains a rhythmic pattern of eighth notes. The second and third staves are labeled 'Leo' and contain vocal lines with lyrics: 'manana Leo maikai', 'Leo mi Kaha', 'Leo maikai', and 'Leo mi'. The fourth staff is labeled 'Timp' and contains a rhythmic pattern of eighth notes. The fifth and sixth staves are labeled 'Leo' and contain vocal lines with lyrics: 'Leo maikai', 'Leo maikai', 'Leo mi', and 'Leo maikai'. The seventh staff is labeled 'Timp' and contains a rhythmic pattern of eighth notes. The eighth and ninth staves are labeled 'Leo' and contain vocal lines with lyrics: 'Leo maikai', 'Leo maikai', and 'Leo maikai'. The tenth and eleventh staves are labeled 'Leo' and contain vocal lines with lyrics: 'Leo maikai', 'Leo maikai', and 'Leo maikai'. The twelfth staff is labeled 'Leo' and contains a vocal line with lyrics: 'Leo maikai'. The score is written in a cursive, handwritten style and includes various musical notations such as notes, rests, and dynamic markings.





No. 1. Great March. 1869-1919. Dedicated to the Hawaiian Band by J. Berger. *Tenor Sax. Bariton.*
Marsia Maestro

Handwritten musical score for tenor saxophone and baritone. The score consists of 11 staves of music. The notation includes various musical symbols such as notes, rests, and dynamic markings. The lyrics are written in Hawaiian and include:

- Rua nui*
- po naha dolte*
- po Dolte*
- Rua*
- nahe sostenuto*
- Leo Hooman*
- Ha'ole nui Rua*
- mae Lea*
- ritar ritar*

The score is marked with various dynamics and performance instructions, including *f marcato*, *ap*, *ritar*, and *ritar ritar*. The piece concludes with a signature and date: *J. Berger April 1919*.



No. 2. Polonaise: Rahana by J.B. Berger.

Tenor Sax
or Baritone.

Ala Polacca

Handwritten musical score for tenor saxophone. The score is written on ten staves with various time signatures and dynamic markings. The notes and rests are written in ink.

Lavaian Mamie Nodeli Lapaui
by J.B. Berger.



HB-1414



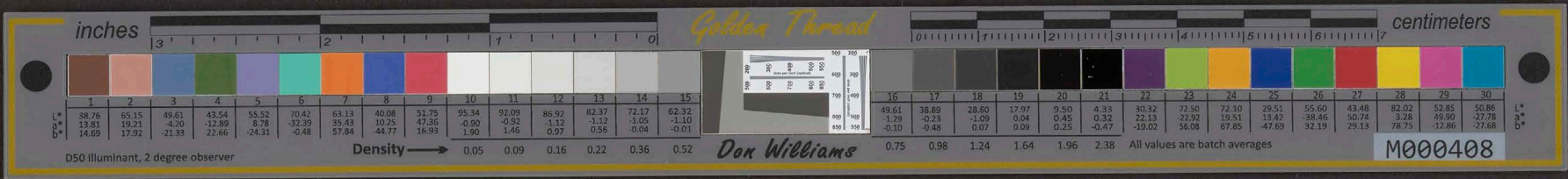
No. 1. Grand March. 1869-1919. Dedicated to the Hawaiian Bands by Dan Berger. 1 Blotnet.

Handwritten musical score for a Grand March. The score is written on ten staves. The first staff is for the Soprano voice, with the lyrics "Loni Marcia Marcato". The second staff is for the Alto voice, with the lyrics "Leo nui Hoomau Marcato". The third staff is for the Tenor voice, with the lyrics "nahi p naho maikai". The fourth staff is for the Bass voice, with the lyrics "Leo". The fifth staff is for the Soprano voice, with the lyrics "Leo nui". The sixth staff is for the Alto voice, with the lyrics "Leo nui". The seventh staff is for the Tenor voice, with the lyrics "Leo nui". The eighth staff is for the Bass voice, with the lyrics "Leo maikai". The ninth staff is for the Soprano voice, with the lyrics "Leo nui". The tenth staff is for the Alto voice, with the lyrics "Leo nui". The score includes various musical notations such as notes, rests, and dynamic markings like "p" (piano) and "f" (forte). The piece concludes with the signature "Dan Berger Honolulu Oct. 1919".



No. 1. Grand March: 1864-1919. Dedicated to the Hawaiian Band by Berger. L. B. Corner
Marcia Maestoso

Handwritten musical score for L. B. Corner's "No. 1. Grand March". The score is written on ten staves, each labeled with a part name: Lohi, Leo a, Leo p, Leo, Leo, Leo, Leo, Trio Lohi, Leo, Leo, and Coda. The music is in 2/4 time and features various dynamics such as *mf*, *marcato*, *nuis*, *p*, *dolce*, *rit*, and *Long*. The lyrics are in Hawaiian, including "Leo nui loomau", "nahe maikai", "Leo", "a a", "Kuha", "Leo maikai", "Leo", "nahe", "Kuha nui", "Kuha", "Leo nui", "Leo", "ritan", and "Pan". The score concludes with the signature "Berger Honolulu Oct 1919".



No. 2. Polonaise: Kahana. by H. Berger.
à la Polacca.

E. B. Cornet

Time
manava
Leo
Leo
Time
Leo
Trio
Leo
Time
Leo

Leo Kiko Kiko Kiko
mi nane maikai
Rima
Leo mi Leo mi Leo
p nane maikai
mi mi Leo
Leo mi Kana *f* accato
mi

Hawaiian March: No. 3. Leilani
by H. Berger.

No. 3
Leo
Leo
Leo
Leo
Leo



H. Berger
Honolulu, Oct.
1919



No. 1. Grand March. 1869-1919. Dedicated to the Hawaiian Band by Berger. 3/4 B. Cornet
Marcia Maestoso

Handwritten musical score for various instruments, including Lohi, Leo, and Coda. The score consists of 12 staves of music. The notation includes treble and bass clefs, time signatures, and various musical notations such as notes, rests, and dynamics. The score is annotated with Hawaiian text and performance instructions.

Annotations and markings include:
- *fr* (forte)
- *marcato*
- *staccato*
- *Ruha*
- *nui*
- *p* (piano)
- *Anape p*
- *nane*
- *puna*
- *Ruha nane*
- *Ruha*
- *nui*
- *Ruha*
- *nane*
- *nui*
- *Ruha*
- *nane*
- *nui*
- *Elua*
- *nui*
- *Ruha*
- *nui*
- *Loa*
- *ritaritar*
- *Long*
- *H.B. 1919*



No. 2 Polonaise: Rakana, by Berger.
Ala Polacca

1, 2 Altos.

Time
manawa
Leo *f* *staccato* Ruha

Leo *f*
p nahe *stacc* *p* Ruha *p*

Time *p*

Leo *p*
f *nui* Ruha *f* *stacc.*

Frio
Time *p* nahe Ruha *stacc*

Leo
Time *p* nahe *f* *nui* Ruha *stacc*

Leo *f* *nui* Leo *f* *Polole* *stacc* *f* *ma*

No 3
Leo

Samian Morn'g
Leo

Leo *Leo*

Frio
Leo

Leo

Leo *ma*



Nr. 3.—Carl Fischer, New York.

Berger. Samian
Oct 1919.



No. 1. Grand March. 1869-1919. Dedicated to the Hawaiian Band by Leo Meyer ^{3/4 Alto}
March Maestoso

Handwritten musical score for No. 1. Grand March. The score is written on ten staves. The first staff is for the Soprano (S) voice, marked 'Lohi' and 'C'. The second staff is for the Alto (A) voice, marked 'Leo' and 'F#', with lyrics 'margato itao poto Kuna'. The third staff is for the Tenor (T) voice, marked 'Leo' and 'F#', with lyrics 'Kuna'. The fourth staff is for the Bass (B) voice, marked 'Leo' and 'p', with lyrics 'p nake'. The fifth staff is for the Soprano (S) voice, marked 'Leo' and 'F#', with lyrics 'nui Kuna'. The sixth staff is for the Alto (A) voice, marked 'Leo' and 'F#', with lyrics 'nui'. The seventh staff is for the Tenor (T) voice, marked 'Leo' and 'F#', with lyrics 'Kuna'. The eighth staff is for the Bass (B) voice, marked 'Leo' and 'F#', with lyrics 'nui'. The ninth staff is for the Soprano (S) voice, marked 'Leo' and 'F#', with lyrics 'Kuna stacc.'. The tenth staff is for the Alto (A) voice, marked 'Leo' and 'F#', with lyrics 'nui'. The eleventh staff is for the Tenor (T) voice, marked 'Leo' and 'F#', with lyrics 'Kuna stacc.'. The twelfth staff is for the Bass (B) voice, marked 'Leo' and 'F#', with lyrics 'nui'. The thirteenth staff is for the Soprano (S) voice, marked 'Leo' and 'F#', with lyrics 'Kuna stacc.'. The fourteenth staff is for the Alto (A) voice, marked 'Leo' and 'F#', with lyrics 'nui'. The fifteenth staff is for the Tenor (T) voice, marked 'Leo' and 'F#', with lyrics 'Kuna'. The sixteenth staff is for the Bass (B) voice, marked 'Leo' and 'F#', with lyrics 'nui'. The seventeenth staff is for the Soprano (S) voice, marked 'Leo' and 'F#', with lyrics 'Kuna'. The eighteenth staff is for the Alto (A) voice, marked 'Leo' and 'F#', with lyrics 'nui'. The nineteenth staff is for the Tenor (T) voice, marked 'Leo' and 'F#', with lyrics 'Kuna'. The twentieth staff is for the Bass (B) voice, marked 'Leo' and 'F#', with lyrics 'nui'. The score concludes with a double bar line and the signature 'Don Meyer' and 'D.M.M.'. The key signature is one sharp (F#) and the time signature is 3/4. The piece is marked 'Maestoso'.



No. 1. Grand March: 1869-1919. *Dedicated to the Hawaiian Band by Berger.* 1. 2 Trombones
Marcia maestoso

1. Solo *Leo* *fn* *Leo nui mar* *batō*

2. Solo *fn* *nui marc.* *pp* *nahē*

3. Solo *p* *nahē* *p* *nahē*

4. Solo *fn* *adue nui* *Elua* *fn* *Elua* *Leo* *fn*

5. Solo *fn* *nui* *adue* *Elua* *nui* *fn* *Leo* *fn* *Elua* *Leo* *nui* *fn* *Leo* *Solo*

6. Solo *fn* *nui* *adue* *Elua* *nui* *fn* *Leo* *fn* *adue* *fn*

7. Trio *pp* *nahē* *p* *nahē* *p* *Leo*

8. Solo *p* *nui* *adue* *Elua* *nui* *fn* *Leo* *fn* *adue* *fn*

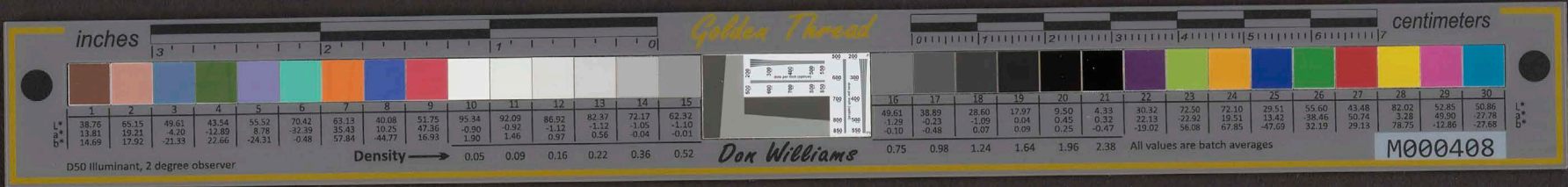
9. Solo *p* *nui* *adue* *Elua* *nui* *fn* *Leo* *fn* *adue* *fn*

10. Solo *fn* *nui* *adue* *Elua* *nui* *fn* *Leo* *fn* *adue* *fn*

11. Solo *fn* *nui* *adue* *Elua* *nui* *fn* *Leo* *fn* *adue* *fn*

12. Solo *fn* *nui* *adue* *Elua* *nui* *fn* *Leo* *fn* *adue* *fn*

berger. Honolulu. Oct 1919



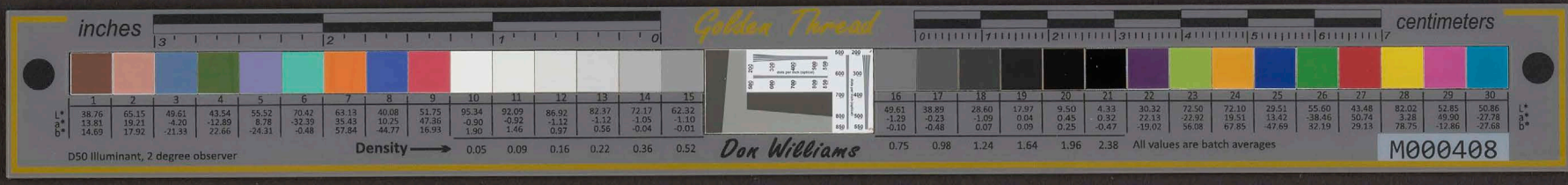
No. 2. Polonaise: Rahana. by J. Berger. 1, 2 Trombone
ala Polacca

Handwritten musical score for two trombones. The score is written on ten staves. The first staff is labeled 'Time' and contains the melody with lyrics 'manava Leo Leo mi marpato'. The second staff is labeled 'Leo' and contains a bass line with lyrics 'p nahu p nahu'. The third staff is labeled 'Time' and contains a melody with lyrics 'Leo mi'. The fourth staff is labeled 'Trio' and contains a melody with lyrics 'p nahu p'. The fifth staff is labeled 'Time' and contains a melody with lyrics 'p nahu Leo mi'. The sixth staff is labeled 'Leo' and contains a melody with lyrics 'Leo mi Raha'. The seventh staff is labeled 'Leo' and contains a melody with lyrics 'Leo'. The eighth staff is labeled 'Leo' and contains a melody with lyrics 'Leo'. The ninth staff is labeled 'Alia Solo' and contains a melody with lyrics 'Alia Solo'. The tenth staff is labeled 'Alia Solo' and contains a melody with lyrics 'Alia Solo'. The score includes various musical notations such as clefs, time signatures, notes, rests, and dynamics.

Hawaiian Music Society
Honolulu, Hawaii



H.B. 1212



No. 1. Grand March. 1869-1919. Dedicated to the Hawaiian Band by H. Berger Lead Trombone
Marcia Maestros

Leo *f* Leo nui *marcato* *f* Kuna

A musical staff for the instrument 'Leo' in a key signature of two flats and common time. It contains a series of notes with stems, some marked with '7' above them. The notes are primarily quarter and eighth notes.

Leo *f* nui *p* nane *p* *p*

A musical staff for 'Leo' with notes and stems. The notes are mostly quarter notes. Dynamic markings include *f*, *nui*, *p*, and *nane*.

Leo *p* nane *p*

A musical staff for 'Leo' with notes and stems. The notes are mostly quarter notes. Dynamic markings include *p* and *nane*.

Leo *f* Kuna nui *marcato* *f*

A musical staff for 'Leo' with notes and stems. The notes are mostly quarter notes. Dynamic markings include *f*, *nui*, *marcato*, and *f*.

Leo *f* Leo nui *f* Kuna *marcato*

A musical staff for 'Leo' with notes and stems. The notes are mostly quarter notes. Dynamic markings include *f*, *nui*, *marcato*, and *f*.

Leo *f* Kuna *f* nui *f* Leo *f*

A musical staff for 'Leo' with notes and stems. The notes are mostly quarter notes. Dynamic markings include *f*, *Kuna*, *nui*, *Leo*, and *f*.

Trio *p* Leo Hoomau *staccato* *p* nane

A musical staff for 'Leo' in a key signature of two flats and common time. It contains notes with stems. Dynamic markings include *p*, *Hoomau*, *staccato*, and *nane*.

Leo *p* *p* nane *f* Kuna

A musical staff for 'Leo' with notes and stems. The notes are mostly quarter notes. Dynamic markings include *p*, *nane*, *f*, and *Kuna*.

Leo *p* nane *p* *f* Kuna *marcato*

A musical staff for 'Leo' with notes and stems. The notes are mostly quarter notes. Dynamic markings include *p*, *nane*, *f*, *marcato*, and *Kuna*.

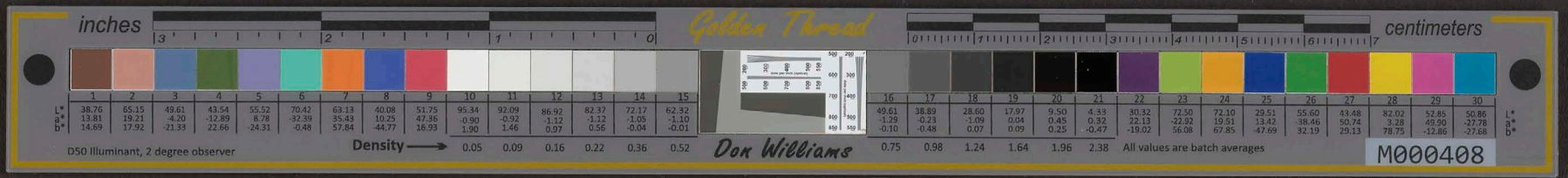
Leo *f* nui Leo Kuna Leo Leo Leo Leo Leo

A musical staff for 'Leo' with notes and stems. The notes are mostly quarter notes. Dynamic markings include *f*, *nui*, *Leo*, *Kuna*, and *Leo*.

Code *f* Leo nui Leo *f* Leo *ritar*

A musical staff for 'Leo' with notes and stems. The notes are mostly quarter notes. Dynamic markings include *f*, *nui*, *Leo*, *ritar*, and *Leo*.

H. Berger
Oct 1919



No. 2. Polonaise: Kahana, by H. Berger - Bas Trombone
Ala Polacca

Time
 Manana *Le 4* *f* *Le mi*

Leo *p* *nake* *p* *nake* *p*

Time *p* *nake* *f* *mi* *Le* *f* *mi*

Leo *p* *nake* *p* *nake* *Mr*

Time *p* *nake* *Mr* *f* *mi* *f*

Leo *f* *Le mi* *f* *Le Ruha* *Mr*

No. 3

Leo

Leo *Le Ruha* *f* *Le*

Leo

Leo *Le mi*

Leo *Le Ruha* *Le* *Mr*

Canvases Made by Hand
 my brother

H. Berger Honolulu
 Oct. 1919.





No. 1. Grand March: 1869-1919. Dedicated to the Hawaiian Band by J. Berger. Euphonium

Marcia maestosa

Lohi *mf marcato Rukha Leo*

Leo. *mf nui p nake*

Leo *p nake p*

Leo *Leo p Leo nui marcato*

Leo *mf Leo Leo nui*

Leo *mf*

Frie *p nake nui p nake nui Leo maikai*

Lohi *p nake nui p nake nui Leo maikai*

Leo *p Leo maikai p nake marcato*

Leo *p marcato p nake Solo mf marcato nui mf*

Leo nui *mf Rukha 3 mf nui mf*

Coda *mf Leo mf nui Rukha Tenuto. mf ritar*

mf ritar

mf Berger Honolulu 1919



No. 2. Polonaise: Kahana by Bonger.
Ala Palacca

Euphonium

Time
manana Leo Leo nui kaha

Leo
p naha maikai

Time
Leo nui

Leo
p naha p kaha

Time
p kaha naha

Leo
p Leo nui

Time
Leo nui kaha

Time
Leo

Leo

Leo

Leo

Kahana in Memory of Leo Kaha by Bonger



Bonger
Honolulu
Extra



No. 1. Grand March. 1869-1919. Dedicated to the Home Band by H. Berger. *Basoe*
Marcia Maestoso.

Handwritten musical score for a Grand March. The score is written on ten staves. The first staff is for the Soprano voice (Lohi) and the second for the Alto voice (Leo). The third staff is for the Tenor voice (Lohi) and the fourth for the Bass voice (Lohi). The fifth staff is for the Soprano voice (Lohi) and the sixth for the Alto voice (Leo). The seventh staff is for the Tenor voice (Lohi) and the eighth for the Bass voice (Lohi). The ninth staff is for the Soprano voice (Leo) and the tenth for the Alto voice (Leo). The score includes various musical notations such as notes, rests, and dynamic markings. The lyrics are written in Hawaiian and include words like 'Kuhua', 'nui', 'nane', and 'ritan'. The score is signed 'H. Berger' and dated 'June 19 19 Honolulu'.





No. 2. Polonaise. Kahana. by Berger.
Ala Polacca

Basse.

Time
Manana
Leo marcato

Leo p nane

Time
Leo p nui

Leo p nane

Time
Leo p nui

Leo nui

Time
Hava ato Kuma

No. 3
Leo

Leo

Leo

Leo

Leo

Leo

Handwritten vertical text on the left margin: *Handwritten notes and markings, possibly including 'Hava ato Kuma' and other annotations.*

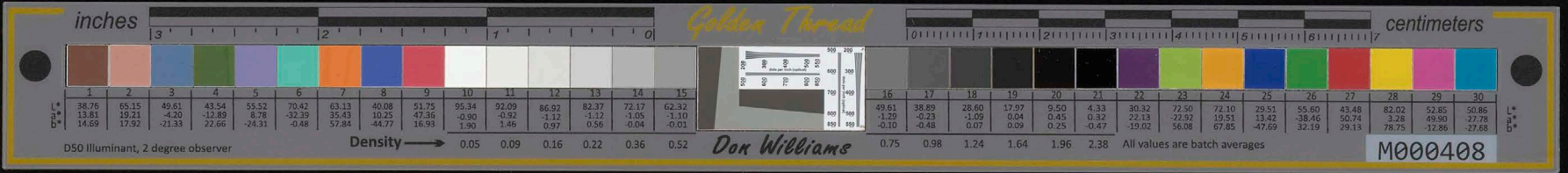
Berger Honolulu
Oct-1949



No. 1. Grand March: 1869-1919. Dedicated to the Hawaiian Band by Berger. J. B. Linder and Bellordrian

Handwritten musical score for various instruments including Loni, Leo, Riko, and Caba. The score includes notes, rests, and dynamic markings such as 'p' and 'f'. It also features Hawaiian lyrics like 'Kiko', 'Riko', 'manana', and 'mahe'.

ritornello
Berger Honolulu Oct 1919.



No. 2. Polonaise. Kahana. by Berger. Drums.

Ala Polacca

Handwritten musical score for drums, consisting of 11 staves. The notation includes various rhythmic patterns, rests, and dynamic markings such as 'p' (piano) and 'pp' (pianissimo). The lyrics 'Leo manava', 'Leo nahē', 'Leo nui', and 'Leo kiko' are written below the staves. The piece concludes with a double bar line and the word 'mua' (end).

Hawaiian March: No. 2. Leilani
by Berger.

Handwritten musical score for drums, consisting of 5 staves. The notation includes rhythmic patterns and dynamic markings. The lyrics 'Leo kiko' and 'Leo nahē' are written below the staves. The piece concludes with a double bar line and the word 'mua' (end).

Berger. Honolulu. Oct. 1919.





G.M. 1869-1919.

hohi - Hawaii Poi *NOT*

Cornet Solo
Flower

Waiwai
Melama
mai ana
Kamalani

Alahi hui

unis

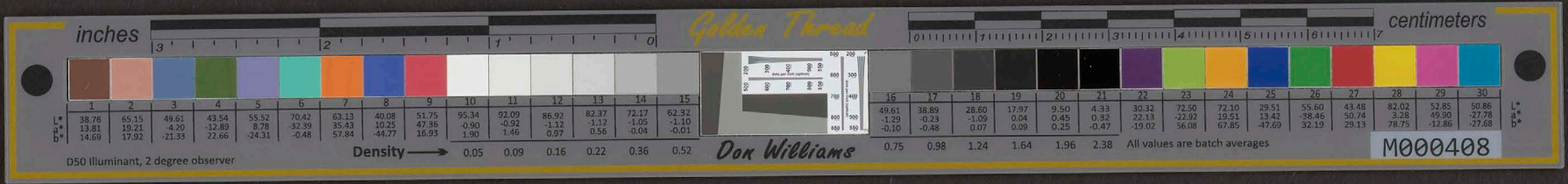
50 yrs.

Pam

Tiroo Haw Poi

to Coda

Pam



Final No 3, Mele Hawaii May 15, 1944

Handwritten musical score for 'Final No 3, Mele Hawaii'. The score consists of ten staves of music. The first staff is marked 'No 6. March' and '1. Solo'. The second staff is marked '4. Mele Hawaii' and '2. Amie'. The third staff is marked '4. March'. The fourth staff is marked 'No 5 Amie'. The fifth staff is marked '6. March' and 'Chorus'. The sixth staff is marked 'Chorus'. The seventh staff is marked 'Chorus'. The eighth staff is marked 'Chorus'. The ninth staff is marked 'Chorus'. The tenth staff is marked 'Chorus'. The music is written in a style typical of early 20th-century manuscript notation, with various note values, rests, and dynamic markings.

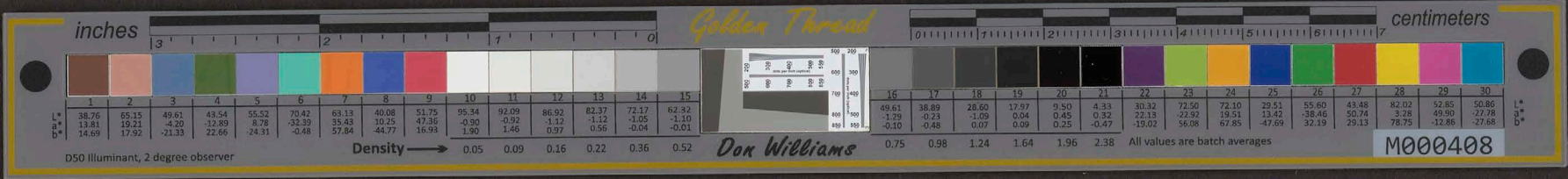


Jan. 1919.

Handwritten musical score on ten staves. The notation includes treble clefs, key signatures (one sharp and one flat), and various musical symbols such as notes, rests, and accidentals. The score is annotated with several handwritten labels and numbers:

- Staff 1: *1. Ed*
- Staff 2: *Happy Land*
- Staff 3: *2*
- Staff 4: *3*
- Staff 5: *4*
- Staff 6: *5*
- Staff 7: *6*
- Staff 8: *7*
- Staff 9: *8*
- Staff 10: *9*

Additional annotations include *at*, *at sf*, and *at sf* written near the bottom of the staves. The handwriting is in dark ink on aged, slightly stained paper.



1. m n

Handwritten musical notation on three staves. The first staff is in treble clef with a key signature of two flats and a 2/4 time signature. The second staff is in bass clef. The third staff is in bass clef. The notation includes various notes, rests, and dynamic markings.

April 22

Handwritten musical score for a piece titled 'April 22'. The score is written on multiple staves and includes the following elements:

- Instrumentation:** 'No 2' (No. 2), 'Alto horn', 'Bass', and 'Drum' are indicated.
- Tempo and Performance Instructions:** 'Alto horn', 'Alto horn', 'Cont', 'in Bb', 'Bass', 'Cont', 'Slow', 'Slow', 'Coda', 'Alto horn', 'Hutu Ra'ish', 'Slow Tempo', and 'ritard' are written throughout the score.
- Lyrics:** 'Lau mea e lili nei' is written in the upper right section of the score.
- Notation:** The score includes complex rhythmic patterns, dynamic markings (e.g., *ff*, *p*), and articulation marks.

