

M-11-3-1
abb

#3



M-11-3-1b

#3 Hawaiian
Compositions



No. 1. Nani Ka Pua. Queen Liliuokalani, arr. by H. Berger. Sopr. Solo

Intro. Solo. *Andte.* *mp.* 7

Na-zii ni na pu-a - ko. o. la. u,
 me. le - i - ka u - ka ka u - ka ky - i ha - na le - i,
 le - i ma - u, no Re - a - loha, a - u hea wa - le a - na
 o - e, E ka pua o ka lo - ke La - ni, o - ka o - i a - ku no
 o - e ma mu - a o - ka na - e ala,

No. 2. Quia Ka Naele, Queen Liliuokalani, arr. by H. Berger.

Intro. Solo. *Moderato* 3/4

No ka u - ka u i - ka wao, ken no
 ha - li. a Li a ke kau a - na mai o ka - a lu - na a - hi -
 ahi, hi - ki pu mai me ke : a - lo - ha

Chorus

Qui - a ka - na he - le, ma - pu mai ke a - la He - na
 he - le na - he - le o - na ia e - na ma - nu E ka I - wi
 I - wa, ma. ka o - na - o - na, Ho - i mai ka u - a
 E pi - li no e pi ti,

START



No. 3. Kuu Pua i Paoa Kalani, Queen Liliuokalani, Sop. Solo.

Intro. And te. E ka Sen. He breg e waft mai nei, Hoo. lia. lia

lia, mai ora iau o ku-u sweet ne-ver-fad-ing flow.

lia, mai bloom ika u-ka o Pa-oa-ka-la-ni.

Chorus I ke may i-ka na-ni o-na pua o-ka u-ka o-u-tu-hai-mala

ma a-o-le na e ho-i e like me ku-u pu-a

i ka lai o Pa-oa-ka-la-ni,

No. 4 Ahe Lau Makani, Queen Liliuokalani arr by H. Berger

Intro. Wally. He a-la nei e ma pu mai ne-i Na ka ma

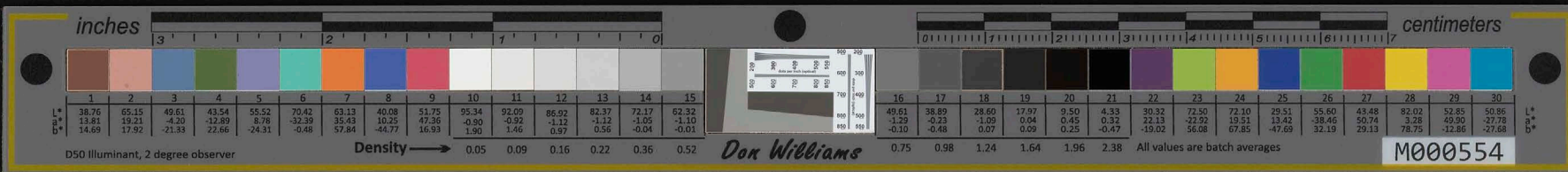
ka-ni, lau a he a-he, I la-we mai a kuu nu-i ki-no

Hoo-pu-me-ha-na i ku-u po-li,

Chorus E ke ho-a o ke a-he lau ma-ka-ni,

Ha-li-ha-li a-la o ku-u a-i-ne,

END



No. 1. nani ka Pua, Queen Liliuokalani, arby. A. Berger.

Intro. 8 11 8 11 8 11
Crot. 4/6

Chorus
Leo
a - u - hea wa - te a - na o - e, E - ka
pua o ka ho - ke la - ni, o - ka o - i a - ku no
o - e ma mu - a o - ka na. e a - la,

No. 2. Pua ka nabele, Queen Liliuokalani, arby. A. Berger.

Intro.
Moderato. 3/4 16 16 32

Chorus.
Pui - a ka - na. he - le, Ma - pu mai ke
a - la, He - na he - le na he - le o - na ia
e - na ma - nu, E ka i. ki i. wa. ma ka
o - na o - na Ho - i - mai ka u - a. E pi. li
no e pi - li

START



No. 3. *Kuu Pua i Pa-oa Kalani, Queen Liliuokalani* *Sopr.* *Arby*

Intro. *Andte*

Chorus

No. 4. *Ahe Lau Makani, Queen Liliuokalani* *Arby*

Intro. *Waltz*

Chorus

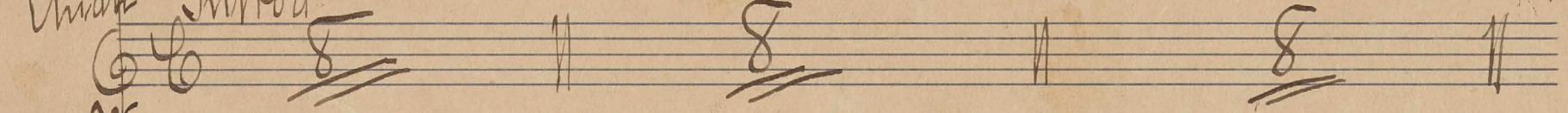
END



No. 1. Nani ka Pua, Queen Liliuokalani, arby H Berger

Soprano

Andte Introd



Chorus
Leo a-u, hea wa-le a-na o-e E-ka

Leo pua o ka-lo-ke la-ni, o-ka o-i a-ku no

o-e ma mu-ritar o-ka na-e ala, ritar ritar

No. 2. Pua ka Nahahe, Queen Liliuokalani, arby H Berger.

Introd Moderato 3/4 16 16 32

Chorus
Leo Pua-a ka-na he-le, Ma-pu mai ke a-la,

Leo He-na, he-le na he-le o na ia e-na ma-nu,

Leo E ka I-wi I-wa ma ka o-na o-na

Leo I-to-i mai ka u-a E pi-li no e pi-li,

H Berger
Kaimuki
March 1911

START



No. 3. *Kuu Pua i Pawakalani* Queen Liliuokalani, only Berger. *Soprano*

Introd
Andte C F F F

Chorus
 Leo I ke mau ika na-ni o-na pua otea
 Leo uka o ulu hai-ma-la-ma a-g-le na e hoi e
 Leo like, me kuu pua i ka lai o Pa-ka-ka-lani.
 ritard ritard ritard

No. 4. *Ahe Lau Makani* Queen Liliuokalani, only Berger.

Introd.
Waltz C $\frac{3}{4}$ F F F

Chorus
 Leo ke ho-a o ke a he lau ma-
 Leo ka-ni Ha-li ha-li a-la
 Leo O ku ~~ku~~ a-ina
 Berger Kaimuki
 March 1911

END



No. 1. Nani ka Pua, Queen Liliuokalani, wby. A. Berger. Alto

Andte *Introd*

Chorus

Leo a-ni hea wa-le a-na o-e E ka
 Leo pu-a o ka-lo-ke la-ni, o-ka, o-i a-ku no
 o-e ma mu-a o-ka na-e ala,
 ritar ritar

No. 2. Puia ka Nahahele, Queen Liliuokalani, wby. A. Berger.

Moderato *Introd*

Chorus

Leo Puia ka-na he-le Ma-pu mai he a-la
 Leo He-na he-le na he-le o na ia e-na ma-nu
 Leo E ka I-wi I-wa ma ka o-na o-na
 Leo Ho-i mai ka u-a E fi-li no e fi-li

A. Berger
 Kaimuki
 March 1911

START



No. 3. *Kuu Pua i Paokalani*, Queen Liliuokalani, by Berger. *Alto*

Andte *Intro*

Chorus
Leo

Leo

Leo

like, me kuu pua i ka lani o Pa-og-ka-lani.
ritar *ritar* *ritar*

No. 4. *Ahe Lau Makani*, Queen Liliuokalani, by Berger.

Waltz *Intro*

Chorus
Leo

Leo

Leo

O kuu mau a... ina

END



No. 1. Nani ka Pua, Queen Liliuokalani, arby. Berger. Tenor.

Intro Andte C F F F

Chorus
Leo a-u hea wa. le a-na o-e E-ka
Leo puu o ka. lo. ke ka-ni o-ka o-i a-ku no
o-e ma mu-ia o-ka ma-e ala
ritar ritar.

No. 2. Pua ka Nakele, Queen Liliuokalani, arby. Berger.

Intro Moderato C $\frac{3}{4}$ $\underline{16}$ \parallel $\underline{16}$ \parallel $\underline{32}$ \parallel

Chorus
Leo Pui-a ka-na he-le Ma-pu mai ke a-la
Leo He-na he-le na he-le o na ia e-na ma-nu,
Leo E ka I-wi I-wa ma ka o-na o-na
Leo Ho-i mai ka u-a E pi-li ho e pi-li

Berger
Kaimaki
Mama

START



No. 3. Kuu Pua i Paokalani, Queen Liliuokalani, arby Berger. Tenor

Andte ♩ || ♩ || ♩ ||

Chorus
Leo I ke man ika na-ni o-na pua o ka
Leo uka o ulu-hai-ma-lq-ma a-o-le na e hoi e
Leo like, me kuu pua i ka tai o Pa-oa-ka-lani.
ritar ritar ritar

No. 4. Ohe Lau Makani, Queen Liliuokalani, arby Berger

Waltz ♩ || ♩ || ♩ ||

Chorus
Leo E ke, ho-a o ke a. he i-lau ma-
Leo ka-ni Ha-li ha-li a. la
Leo O kuku a--ina. Berger Kaimuki March 1911.

END



No. 1. Nani Ka Pua Queen Liliuokalani *arr. by J. Berger Tenor.*

Andante *Chorus*

Intro.

Amu - hea wa - le a - na o - e E - ka pua o ka lo - ke
 - la ni o ka O - i a - ku no o - e ma -
 - nu - a o ka ma - e a - la.

Vitar. *Vitar.*

No. 2. Pua Ka Mahalo Queen Liliuokalani *arr. by J. Berger*

Moderato *Chorus*

Intro.

Pui - a ka - na - he - le, Ma - pu mai ke a -
 la, He na he - le na he - le, o - na ia e na
 ma - nu E ka Ju - wi - l - wa, Ma ka o - na - o -
 na Ho - i mai ka u - a E pi - li no e pi - li

START



No. 3. *Kimi Pua Paokatani, Queen Liliuokalani* arby F. Berger *Senor.*

Andante *Introd* 8 11 8 11 8 11

Chorus
I ke mau i-ka na-ni o-na pua, o-ka.
u-ka o u-lu-hai-ma-la-ma, a-o-le na e ho-i e
like, me kuu pu-a i ka lai o Pa-va-ka-la-ni.

No. 4. *Ahe Lau Ma Kani, Queen Liliuokalani* arby F. Berger

Waltz *Introd* 16 11 16 11 16 11

Chorus
E ke ho-g o ke a-he lau ma-ka-
ni, Ha-li-ha-li a-la o kuu-a-
i-na

END



No. 1. Nani ka Pua, Queen Liliuokalani, arby. Berger. Bass

Introd.

Musical notation for the introduction, marked *Andte* in 3/4 time, consisting of three measures.

Chorus

Two vocal staves for the chorus. The lyrics are:
Leo: A-u-hea wa-le a-ya o-e E-ka
Leo: pua o ka-lo-ke la-ni o-ka o-i a-ku no
o-e ma ma-atar o-ka ya-e ala
ritar ritar

No. 2. Pua ka Nahahe, Queen Liliuokalani, arby. Berger.

Introd

Musical notation for the introduction, marked *Moderato* in 3/4 time, consisting of three measures.

Chorus

Four vocal staves for the chorus. The lyrics are:
Leo: Pua ka-na he-le, Ma-pu mai ke a-la
Leo: He-na he-le na he-le o na ia e-na ma-nu.
Leo: E ka I-wi I-wa maka o-na o-na
Leo: Ho-i mai ka u-a E pi-li no e pi-li

De Berger
Kaimuki
March 1911

START



No. 3. Kuu Pua i Paokalani, Queen Liliuokalani, arby. Berger. Bass

Intro
Andte C F || F || F ||

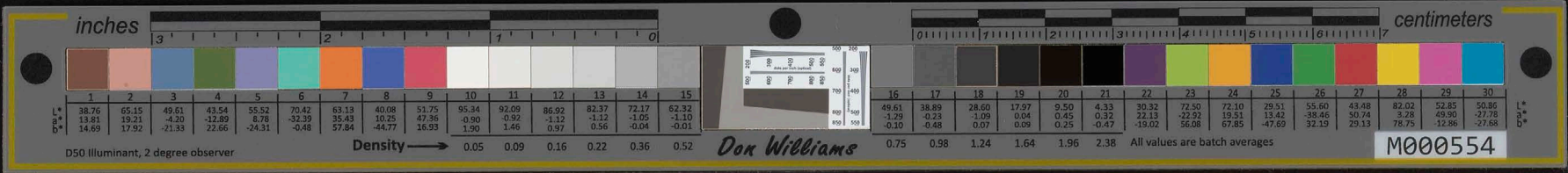
Chorus
Leo I ke mau ika na-ni o-ma pua. o-ka ..
Leo uka o ulu-hai-ma-fa-ma a-o-le na e hoiae
Leo like me kuu pua i ka lai o Pa-ga-ka-lani.
ritar ritar ritar

No. 4. Ahe Lau Makani, Queen Liliuokalani, arby. Berger.

Intro
Waltz C 3 16 || 16 || 16 ||

Chorus
Leo E ke ho-a o ke a-he-lau ma-
Leo kan-ni Ha-li ha-li a-la
Leo O Kuu a--ina,
Do. Berger ^{Raimuri} March 1911.

END



No. 1. *Mari Ka Pua, Queen Liliuokalani* *arr by W Berger*
Bass *#3 a.*
Intro *Andte* *Bass.*

Intro Andte *8* *11* *8* *11* *8* *11*

Chorus
A-u-hea wa-le a-na o-e, E-ka
pua o ka lo-ke la-ni o-ka o-i a-ku no
o-e ma mu-a o-ka na-e a-la,

No. 2. *Puia Ka Mahale, Queen Liliuokalani* *arr by W Berger.*

Intro *Moderate* *3/4* *1/6* *11* *1/6* *11* *3/2* *11*

Chorus
Pui-a ka na-he-le Ma-pu mai ke a-la
He-na he-le na he-le o-na ia e na
ma-nu E ka I-wi I-wa, Ma-ka
O-na o-na Ho-i mai ka u-a
E pi-li no e pi-li

START



No. 3. Kuu Pua i Paookalani, Queen Liliuokalani, ar by H. Berger. Bass.

Intro. *Andte.* Al. $\underline{8}$ \parallel $\underline{8}$ \parallel $\underline{8}$ \parallel

Chorus \parallel $\dot{1}$ $\dot{2}$ $\dot{3}$ $\dot{4}$ $\dot{5}$ $\dot{6}$ $\dot{7}$ $\dot{8}$ $\dot{9}$ $\dot{10}$ $\dot{11}$ $\dot{12}$ $\dot{13}$ $\dot{14}$ $\dot{15}$

I ke mau i. ka na. ni o. na pua o. ka
 u. ka o u. lu. hai. ma. la. ma, a. he le naehoi e
 like, me ku. u. pu. a i ka tita. rai o Pa. od. ka. la. ni.

No. 4. Ahe Lau Mekani Queen Liliuokalani, ar by H. Berger.

Intro. *Waltz* Al. $\underline{16}$ \parallel $\underline{16}$ \parallel $\underline{16}$ \parallel

Chorus \parallel $\dot{1}$ $\dot{2}$ $\dot{3}$ $\dot{4}$ $\dot{5}$ $\dot{6}$ $\dot{7}$ $\dot{8}$ $\dot{9}$ $\dot{10}$ $\dot{11}$ $\dot{12}$ $\dot{13}$ $\dot{14}$ $\dot{15}$

E ke ha. a. o. ke a. he lau ma. ka. ni,
 Ha. li. ha. li a. la o ku. u a. i. na,

END



No. 1. Nani ka Pua, Queen Liliuokalani arby H. Berger. Flute.

Intro. *Andte.* Musical notation for the first system of No. 1, featuring chords and rhythmic patterns.

Musical notation for the second system of No. 1, including a *ritard.* marking.

Chorus Musical notation for the first system of the chorus in No. 1.

Musical notation for the second system of the chorus in No. 1, ending with a *D.C.* marking.

No. 2. Pua ka Nohole, Queen Liliuokalani, arby H. Berger.

Intro. *Andante* Musical notation for the first system of No. 2, marked *8va*.

Musical notation for the second system of No. 2, marked *8va Luna*.

Solo Musical notation for the first system of the solo section in No. 2.

Musical notation for the second system of the solo section in No. 2.

Chorus Musical notation for the first system of the chorus in No. 2.

Musical notation for the second system of the chorus in No. 2.

Musical notation for the third system of the chorus in No. 2, ending with a *D.C.* marking.

START



No. 3. *Kuu Pua i Poakalani, Queen Liliohalani, arby H. Berger, Flute*

Handwritten musical score for No. 3. The score is written on five staves. The first staff is labeled 'Introd.' and 'And^{te}'. The second staff is marked 'mp' and 'Solo'. The third staff is marked 'ritan.'. The fourth staff is marked 'Chorus'. The fifth staff ends with a double bar line and the initials 'H.B.'. The music is written in treble clef with a key signature of one sharp (F#).

No. 4 *Ahe Lau Makani, Queen Liliohalani, Arby H. Berger*

Handwritten musical score for No. 4. The score is written on five staves. The first staff is labeled 'Introd.' and 'Waltz'. The second staff is marked 'mp' and 'Solo'. The third staff is marked 'ritan.'. The fourth staff is marked 'Chorus'. The fifth staff ends with a double bar line and the initials 'H.B.'. The music is written in treble clef with a key signature of one sharp (F#).

END



No. 1. Nani Ka Pua. Queen Liliuokalani. arry Berger. Flute.

Intro. *mf*

Solo

ritar

No. 2. Pua Ka Nahahe. Queen Liliuokalani. arry Berger.

Intro. *Grave Lento*

Moderato

Grave Lento

Solo

16

Grave

Berger man
Kaimuki 1911

START



No. 3. *Ruu Pua i Paokalani* Queen Liliuokalani arly J.B. Berger *Flute*

Handwritten musical score for No. 3. Includes staves for Intro, Alto, Leo, Solo, and another Leo section. Annotations include 'ritar', 'p', 'mf', and 'D.C.'.

No. 4. *Aheake Lau Makani* Queen Liliuokalani arly J.B. Berger

Handwritten musical score for No. 4. Includes staves for Intro, Alto, Leo, and another Leo section. Annotations include 'ritar', 'p', 'mf', 'D.C.', and 'Raimaki'.



No. 1. Nani Ka Pua. Queen Liliuokalani arry J. Berger. 1 Clarinet B

Handwritten musical score for No. 1. Includes staves for Intro, Solo, and Ritard sections with various musical notations and dynamics.

No. 2. Pua Ka Mahalo. Queen Liliuokalani. arry J. Berger.

Handwritten musical score for No. 2. Includes staves for Intro, Solo, and Ritard sections with various musical notations and dynamics.

START



No. 3. *Ruu Pua i Pasakalani Queen Liliuokalani* Berger. 1 Clarinet

Intro. *Andte*
Solo
Leo
ritar

No. 4. *Ahe Lau Makani Queen Liliuokalani* Berger.

Intro. *March*
Solo
Leo
ritar
Bayer
Raimaki
March 1911.

END



No. 1. Nani Ka Pua. Queen Liliuokalani only J. Berger. 2 Clarinet B.

Andte
in B
mf
Leo
Solo
ritan
Chorus
mf
Leo
ritan
ritan

No. 2. Pua Ka Mahete. Queen Liliuokalani only J. Berger.

In B
Moderato
mf
Leo
Solo
16
Chorus
mf
Leo
Leo
18
19
20
21
22
23
24
25
26
27
28
29
30
31
32
33
34
35
36
37
38
39
40
41
42
43
44
45
46
47
48
49
50
51
52
53
54
55
56
57
58
59
60
61
62
63
64
65
66
67
68
69
70
71
72
73
74
75
76
77
78
79
80
81
82
83
84
85
86
87
88
89
90
91
92
93
94
95
96
97
98
99
100

START



No. 3. Kuu Pua i Paoa Kalani Queen Liliuokalani arr'd Berger

Handwritten musical score for No. 3. Includes staves for Intro, Andte, Solo, and Leo. Annotations include 'ritard', 'Chorus', and 'Leo'.

No. 4. Aheke Lan Makani Queen Liliuokalani arr'd Berger

Handwritten musical score for No. 4. Includes staves for Intro, Solo, and Leo. Annotations include 'ritard', 'Chorus', and 'Leo'.

END



No. 1. Hani' Ra Pua, Queen Liliuokalani arby H. Berger, in Bb, 2. Clarinet

Intro. in Bb And.te. mpr. Musical notation for the first system of the first piece.

Solo musical notation for the first piece, including a chorus section and ending with a double bar line.

No. 2. Pua Ra Nalele, Queen Liliuokalani, arby H. Berger.

Musical notation for the second piece, starting with an introduction in 3/4 time and including a solo section and a chorus.

START



No. 3. Kuu Pua i Paokalani, Queen Liliuokalani, arby H. Berger. 2 Clarinets

Handwritten musical score for No. 3. Includes sections for 'Intro', 'Solo', and 'Chorus'. The score is written on five staves with various musical notations, including notes, rests, and dynamic markings like 'mf' and 'ritar'.

No 4 Ahe Lau Makani Queen Liliuokalani arby H. Berger.

Handwritten musical score for No. 4. Includes sections for 'Intro Waltz' and 'Solo'. The score is written on five staves with various musical notations, including notes, rests, and dynamic markings like 'mf'.

END



No. 1. Nani Ka Pua. Queen Liliuokalani by W. Berger. 1. Cornet B

Andte
 Solo
 Leo
 ritard
 Chorus
 ritard

No. 2. Pua Ka Nahahe Queen Liliuokalani by W. Berger

Moderato
 Solo
 Leo
 Chorus
 Leo
 W. Berger
 Kaimuki, Hawaii

START



No. 3. Kuu Pua i Paokalani Queen Liliuokalani arr. Berger. 1. Cornet.

Handwritten musical score for No. 3. Includes staves for Intro, Leo, Solo, and Chorus with various musical notations and annotations like 'ritard' and 'p'.

No. 4. Aheaha Lau Makani Queen Liliuokalani arr. Berger.

Handwritten musical score for No. 4. Includes staves for Intro, Leo, Solo, and Chorus with various musical notations and annotations like 'ritard', 'p', and '16'.

Berger
Kaimuki
March 1911

END



No. 1. Nani Ka Pua. Queen Liliuokalani arr. J. Berger. 2 Horns B

Handwritten musical score for No. 1. Includes parts for Intro, Leo, Solo, and Chorus with various musical notations and dynamics.

No. 2. Puia Ka Nahele. Queen Liliuokalani arr. J. Berger.

Handwritten musical score for No. 2. Includes parts for Intro, Leo, Solo, and Chorus with various musical notations and dynamics.

Handwritten signature and date: Berger Kaimuki March 1911.

START



No. 3. Kuu Pua i Paoa Kalani Queen Liliuokalani arr. H. Berger. 2 Cornets

in B Intro. Andte

Leo p

ritar

Solo p p 4

Chorus

Leo

Leo ritar

Leo ritar

No. 4. Ahe Lan Makani Queen Liliuokalani arr. H. Berger.

in B Intro. Waltz

Leo p

Solo p p

Chorus

Leo p

Leo p

Berger Kaimuki Mammian

END



No. 1. Nani Ka Pua. Queen Liliuokalani by Berger. Alto Solo

Handwritten musical score for No. 1. The score is written on five staves. The first staff is the vocal line, marked 'Alto Solo' and 'Andte'. The second staff is the piano accompaniment, marked 'Leo' and 'ritar'. The third staff is the solo part, marked 'Solo' and 'ritar'. The fourth staff is the piano accompaniment, marked 'Leo' and 'ritar'. The fifth staff is the piano accompaniment, marked 'Leo' and 'ritar'. The score includes various musical notations such as notes, rests, and dynamic markings.

No. 2. Pua Ka Nanele. Queen Liliuokalani by Berger.

Handwritten musical score for No. 2. The score is written on five staves. The first staff is the vocal line, marked 'Moderato' and 'Leo'. The second staff is the piano accompaniment, marked 'Leo'. The third staff is the solo part, marked 'Solo' and 'ritar'. The fourth staff is the piano accompaniment, marked 'Leo' and 'ritar'. The fifth staff is the piano accompaniment, marked 'Leo' and 'ritar'. The score includes various musical notations such as notes, rests, and dynamic markings.

START



No. 3. Kuu Pua i Paokalani. Queen Liliuokalani: only H. Berger.

1st Altos
2nd Altos

in Eb *Andte* *Leop*

ritar

Solo *p* *3* *4* *1.* *1.* *Chorus* *Leop*

Leop *ritar* *ritar* *ritar*

No. 4. Ahe Lau Makani Queen Liliuokalani: only H. Berger.

in Eb *Andte* *Leop*

Solo *p* *16* *Chorus* *p* *Leop*

Leop *ritar* *ritar*

De. Berger
Raimuri *March 1911.*

END



No. 1. Nani Ra Pua. Queen Liliuokalani only Berger Trombone

Handwritten musical score for No. 1. Includes parts for Leo and Solo with annotations like 'ritard', 'p', and 'pp'.

No. 2. Pua Ka Nakele Queen Liliuokalani only Berger

Handwritten musical score for No. 2. Includes parts for Leo and Solo with annotations like 'Moderato', 'p', and 'pp'.

Berger
March 19 11

START



No. 3. Kuu Pua i Paoakalani: Queen Liliuokalani's *Fremont*

Intro. *Andte* C

Leo C *ritan*

Solo C *Chorus*

Leo C

Leo C *ritan*

Leo C *ritan*

No. 4. Ahe Lau Makani: Queen Liliuokalani's *Berga*

Intro. *Andte* C

Leo C *Solo*

Solo C *16*

Chorus C *Leo*

Leo C *Berga*

Kaimuki 1911

END



No. 1. Nani Ka Pua. Queen Liliuokalani. by HB Berger. Basso.

Andte
Intro. C mfr
7 7 7 7 7 7 7 7
7 7 7 7 7 7 7 7
ritar

Solo p
7 7 7 7 7 7 7 7
ritar

Chorus F p \#F
7 7 7 7 7 7 7 7
ritar

No. 2. Puia Ka Nakele. Queen Liliuokalani by HB Berger.

Intro
Moderato C mfr
7 7 7 7 7 7 7 7
7 7 7 7 7 7 7 7

Solo p
7 7 7 7 7 7 7 7
Chorus F p \#F

7 7 7 7 7 7 7 7
7 7 7 7 7 7 7 7
HB
1911

START



No. 3. *Kuu Pua i Paokalani Queen Liliuokalani* arr. Berger *Basso*

Intro. *Andte* C

Solo F

Chorus F

No. 4. *Ahe ahe Lau Makani Queen Liliuokalani* arr. Berger

Intro. *Waltz* C $\frac{3}{4}$

Solo F

Chorus F

END



No. 1. Nani Ka Pua, Queen, Liliuokalani, arby. H. Berger. *Bells*
Drums etc.

Intro.
And. C

Solo

Bells or Tri. *Chorus*
ritar

No. 2. Pua Ka Nahahe, Queen Liliuokalani arby. H. Berger.

Intro. *Castas* C

Triangle
Bells or Tri.

Chorus

START



No. 3. *Kien Pua i Paokalani, Queen Liliuokalani, arby M. Berger. Drums etc Bells.*

Introd. Andte. Bells or Triangle. Musical notation for the introduction section.

Solo. Musical notation for the solo section, including a Chorus section.

No. 4. *Lau Makani Queen Liliuokalani, arby M. Berger.*

Introd. Waltz. Musical notation for the introduction section of the second piece.

Solo. Musical notation for the solo section of the second piece, including a Chorus section.

END



No. 1. Nani Ka Pua. Queen Liliuokalani only Berger. *Bello* *Sto*

Intro

Leo

Solo

Leo

Bells or Triangl

ritar

Chorus

Leo

ritar

7 minutes

No. 2. Pua Ka Mahale Queen Liliuokalani only Berger.

Intro

Moderato

Leo

Cast

Cast

Bells or Tri

Chorus

Cast

Leo

14

16

Berger

Kaimuk: March 1911.

1/2 minutes

START



No. 3. Kuu Pua i Paokalani Queen Liliuokalani arr. W. Berger ^{Drum Bells}

Intro. *Andte* $\frac{2}{4}$

Leo *Bells or Triangle*

Solo *pp Bells or Tri.*

Leo *Chorus*

Leo *Leo Bells or Tri.*

Leo *ritar*

No. 4. Ahe Lau Makani Queen Liliuokalani arr. W. Berger

Intro. *Waltz* $\frac{3}{4}$

Leo *Leo Bells or Tri.*

Solo *pp Bells or Tri.*

Leo *Chorus*

Leo *Castanets, Triangle*

Leo *W. Berger*

W. De Berger
Hawaii, March 1911.
2 minutes

END



No. 1. Nani Ka Pua. Queen Liliuokalani only J. Berger. 1. Violin

Intro
Andte
mf
Musical notation for the introduction of the first piece.

Solo
p
Musical notation for the solo section of the first piece.

Chorus 2 time Gva Luna
ritar
Musical notation for the chorus of the first piece.

No. 2. Pua Ka Nakele, Queen Liliuokalani only J. Berger.

Intro.
Moderato.
mf
Musical notation for the introduction of the second piece.

Solo
p
Musical notation for the solo section of the second piece.

Chorus 2 time Gva Luna
mf
Musical notation for the chorus of the second piece.

Musical notation for the final section of the second piece.

Raimuki
March 1911.

START



No. 3. Kuu Pua i Poo a Kalani Queen Liliuokalani by J. Berger *1 Violin*

Introd. *Andte* *mf* *ritar*

Solo *ritar*

Chorus *2 Time Gva Luna* *ritar*

No. 4. Ahe ahe Lau Makani, Queen Liliuokalani by J. Berger

Introd. *Waltz* *mf*

Solo

Chorus *2 Time Gva Luna* *mf* *ritar* *berger Raimaki March 1911*

END



No. 1. Nani Ka Pua. Queen Liliuokalani arr. by Berger 2. Violin

Introd. *Andte* *mf*

Solo *p*

Chorus *mf*

ritar

Handwritten musical notation for the introduction, solo, and chorus of 'Nani Ka Pua'. The introduction is in 6/8 time, marked 'Andte' and 'mf'. The solo section is marked 'p'. The chorus is marked 'mf' and includes a 'ritar' (ritardando) marking. The notation includes treble and bass clefs, notes, rests, and dynamic markings.

No. 2. Pua Ka Nakele. Queen Liliuokalani arr. by Berger

Introd. *Moderato* *mf*

Solo *mf*

Chorus *mf*

Handwritten musical notation for the introduction, solo, and chorus of 'Pua Ka Nakele'. The introduction is in 2/4 time, marked 'Moderato' and 'mf'. The solo section is marked 'mf'. The chorus is marked 'mf'. The notation includes treble and bass clefs, notes, rests, and dynamic markings.

1911
Berger

START



No. 3. Ruu Pua i Paokalani. Queen Liliuokalani arr. J. Berger. 2. Violin.

Introd.

Andte. Musical notation for the introduction of No. 3, featuring a treble clef, common time signature, and various notes and rests.

Solo. Musical notation for the solo section of No. 3, including a treble clef, common time signature, and notes with a 'ritard' marking.

Chorus. Musical notation for the chorus of No. 3, featuring a treble clef, common time signature, and notes with a 'ritard' marking.

No. 4. Ahe ahe Lau Makani. Queen Liliuokalani arr. J. Berger.

Introd

Musical notation for the introduction of No. 4, featuring a treble clef, 3/4 time signature, and notes with a 'ritard' marking.

Solo. Musical notation for the solo section of No. 4, including a treble clef, 3/4 time signature, and notes with a 'ritard' marking.

Chorus. Musical notation for the chorus of No. 4, featuring a treble clef, 3/4 time signature, and notes with a 'ritard' marking.

J. Berger
Kaiunani March 1911.

END



No. 1. Nani Ka Pua, Queen Liliuokalani by Berger. Viola

Intro. Andte

Solo

Chorus

No. 2. Pua Ka Nakele, Queen Liliuokalani by Berger.

Intro. Moderato

Solo

HB
man
1911.

START



No. 3, Ruu Pua i Paoo Kalamo. Queen Lilino Kalamo: by J. Berger *Viola.*

Intro
Andte $\text{B } \frac{3}{4}$ *mf*

Solo *ritar*

Chorus $\text{B } \frac{3}{4}$ *ritar*

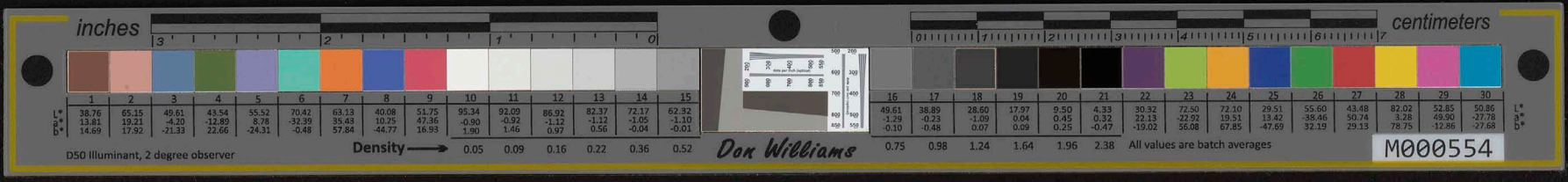
No. 4. Aheane Lau Makani Queen Lilino Kalamo: by J. Berger.

Intro
Molto $\text{B } \frac{3}{4}$ *mf*

Solo *Chorus*

berger
Kalamo *March* *1911.*

END



N^o 1. The Old Plantation L. Stepe. arby. H. Berger. Soprano.

Introduction Andante $\text{G}^\flat \text{B}$

Chorus $\text{G}^\flat \text{B}$

U - e - Ho - me - pu - me - ha - na - i - Ke - lo - ha - I - ka - o - lu

U - Ka - miu - I - ka - po - li - o - ke - o - na - o - na

ritar

N^o 2 Ua Iki no me Ou. H. Berger.

March $\text{G}^\flat \text{B}$

Chorus $\text{G}^\flat \text{B}$

U - a - hi - ki - no - me - U - u - Ke - a - la

o - ka - va - bi - ne - e - a - ke - a - na - no - e - i - ke

la - i - ke - na - ni - o - na - pu - a

START



No 3. Like no a like Alice Everet. arby He Berger. Soprano.

Introduction Andante $\text{F} \flat \text{B} \text{E}$ $\underline{\delta}$ $\underline{\delta}$ $\underline{\delta}$

Chorus
 Leo
 Hooman
 O - o - e no ka ni - u pu - a - i ku'u Se - i hi - ki a - hi
 A - hi o - ke ka - ni o na - ma nu I ma Ho la o ke a u
 mo - e

No 4. Malu i Ke Ao. He Berger.

Galop $\text{F} \flat \text{B} \text{E}$ $\frac{2}{4}$ $\underline{16}$ $\underline{24}$ $\underline{16}$

Chorus
 Leo
 Ma - lu - i - ke - Ao - ke - a - hi - o - wai - lu - ku - ke - pa - ni - wai
 o - I - a - o - Ma - lu - i - ke - Ao - ke - a - hi - o - wai - lu - ku - ke
 pa - ni - wai - o - I - a - o

END



No. 1. The Old Plantation D. Nape. arby H. Berger. Soprano.

Introduction Andante. $\text{F} \flat \text{C}$ 8

Low 8 || 4 | 5 | rrrrrr | 2

Chorus

Soprano $\text{F} \flat \text{C}$

Old Plan-tation na-ni O-e- Home pu-me

ha-na i Kea-lo-ha- I Ka O-lu

Soprano

O-ka niu I Ka po-li o ke O-na-O-na.

No. 2. Ua Hiki no me Au. H. Berger.

March $\text{F} \flat \text{C}$ 16 || 16 || 16

Chorus $\text{F} \flat \text{C}$

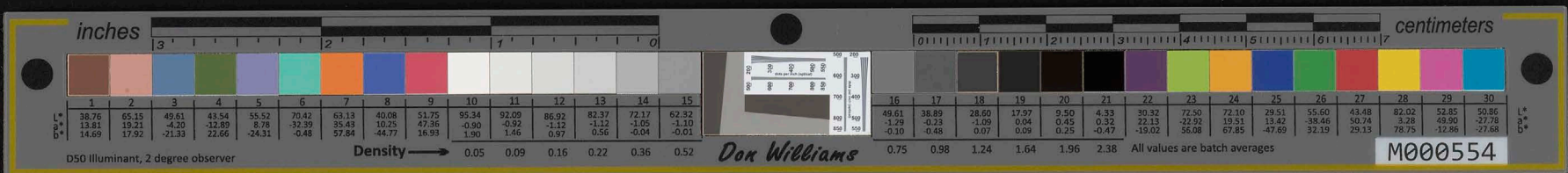
Ua hi-ki no me Au — Ke a-la o Ka Va-

bi-ne E-a ke a-na no E-i ke la-i ke

Soprano

na-ni O na pu-a-

START



No. 3. Like no a Like. Alice Everett. only H Berger. Soprano.

Introduction Andante $\text{C} \text{ } \text{C}$ V | 8 |||

V | 8 ||| V | 8 |||

Chorus
Leo
Hooman

0 - 0 - e no Ka-wi u - pu - a - i Ku'u
 Le - i hi - ki a - hi - a - hi 0 ke Ka - ni 0 na
 ma - nu I na ho - la 0 ke a - u mo - e.

ritard $\text{D} \text{ } \text{C}$

No. 4. Malu i ke Ao. H Berger.

Galop. $\text{C} \text{ } \text{C}$ $\frac{2}{4}$. 16 || 24 | 16 |||

Chorus
Leo

Malu i ke Ao Ke ahi 0 Wai - luku ke pani wai
 0 0 - a - 0. Malu i ke Ao Ke ahi 0 Wai - luku ke
 pani wai 0 0 - a - 0.

H Berger Honolulu July/08

END



N^o 1. The Old Plantation N. Kape ar by H. Berger. Alto.

Introduction Andante $\text{C}\flat\text{B}\flat$ $\text{3}/4$ Solo $\text{3}/4$ $\text{4}/4$ $\text{5}/4$ $\text{2}/4$

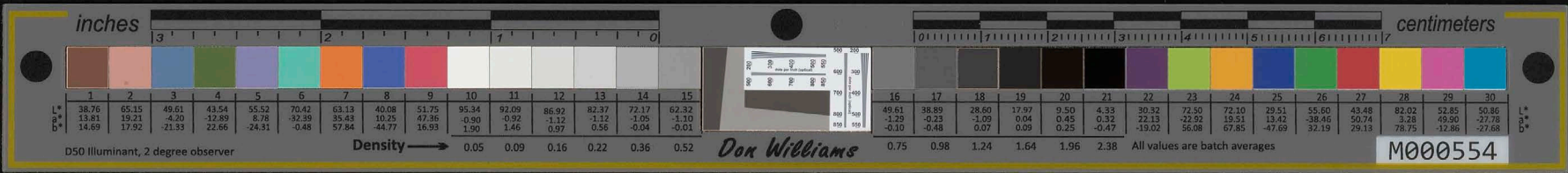
Chorus des hommes Old Plan ta tion na ni U e Ho me pu me ha na i Kea
lo ha I Ka o lu o Ka niu I Ka
ritar po li o ke o na o ha

N^o 2. Ua Hiki no me A'u H. Berger.

March $\text{C}\flat\text{B}\flat$ $\text{16}/8$ $\text{16}/8$ $\text{16}/8$

Chorus des Kiko U a hi ki no me A'u Ke a la o Ka va
bi ne b a ke a na no lo i ke la i ke
na hi o na pu a

START



N^o 3 Like no á Like Ulice Everet arby H. Berger.

Alto.

Introduction Andante $\text{♩} = 8$ | $\text{♩} = 8$ | $\text{♩} = 8$ | $\text{♩} = 8$ | $\text{♩} = 8$ |

Chorus
des
Hosman

o - o - e - no - kau - i - u - pu - a - i - ku - u - le - i - hi - ki - a - hi
a - hi - o - ke - ka - ni - o - na - ma - nu - i - na - ho - la - o - ke - a - u

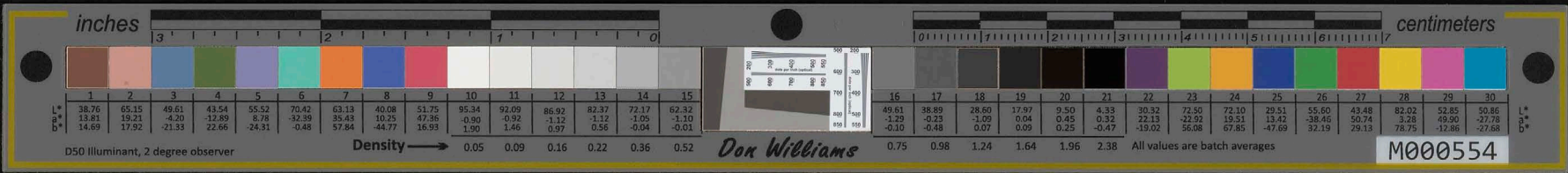
no - e

N^o 4 Malu ike Ao H. Berger.

Andante $\text{♩} = 16$ || $\text{♩} = 24$ || $\text{♩} = 16$ Chorus
des $\text{♩} = 16$

Ma - lu - i - ke - Ao - ke
a - hi - o - wai - lu - ku - ke - pa - ni - wai - o - i - a - o Malu i ke
Ao - ke - a - hi - o - wai - lu - ku - ke - pa - ni - wai - o - i - a - o

END



No. 1. The Old Plantation. D. Napier and J. Berger. Alto.

Introduction Andante $\text{F} \text{ } \text{C}$ 8

Solo 8 | 4 | 5 | 2

Chorus

Leo Hoomau C Old Plan-ta-tion na-ni O-e-Ho-me pu-me

Hoomau ha-na i-ke-a lo-ha-i ka O-lu

Hoomau O-ka niu I. Ka po-li o-ke o-na-o-na.

No. 2. Ua Iki no me A'u. J. Berger.

March. $\text{F} \text{ } \text{C}$ 16 | 16 | 16

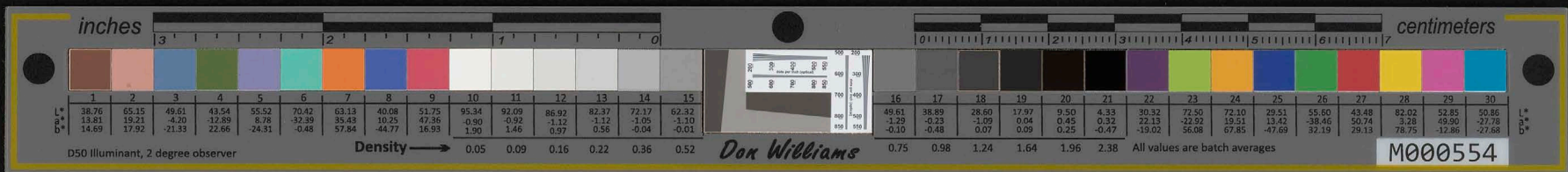
Chorus

Leo Kiko $\text{F} \text{ } \text{C}$ U-a hi-ki no me A'u — Ke a-la o-ka Va-

Kiko bi-ne e a ke a-na no e i ke la — i ke

Kiko na-ni o-na pu-a —

START



No. 3. Like noa Like. Alia Ewent arby H Berger. Alto

Introduction Andante. Musical notation for introduction.

Chorus Leo Hooman. O - O - e no Kau - i u - pu - a - i Ku'u
Le - i hi - ki a - hi - a - hi O ke Ka - ni o na
ma - nu I na ho - la o ke a - u Mo - e

No. 4. Malu i ke Ao. H Berger.

Galop. Musical notation with measures 16, 24, 16.

Chorus Leo. Malu i ke Ao ke ahi o wai - luku ke pani wai
o I - a - o. Malu i ke Ao ke ahi o wai - luku ke
pani wai o I - a - o. Berger Honolulu July 08

END



No. 1 The Old Plantation. D. Nape arby. H. Berger Tenor.

Introduction Andante 4/4 Solo 5

Old-Plan-tation na-ni O-e

Ho-me pu-me ha-na i-ka-lo-ha O-ka-O-lu O-ka-niu-O-ka-

po-li-o-ke o-na o-na

No. 2 Ua Hiki no me O'u. H. Berger

March 16 Chorus U-a-hi-Ki

no-me O'u Ke-a-la o-ka-va bi-ne

O-ke-a-na no e i-ke-la-i-ke-na-ni o-na pua

START



No 3. Like no a Like. Alice Everett. arby H. Berger. Tapanor.

Introduction Andante $\text{F} \flat \text{C}$ $\frac{3}{4}$ $\underline{\underline{8}}$ | $\underline{\underline{8}}$ | $\underline{\underline{8}}$ | $\underline{\underline{8}}$ | $\underline{\underline{8}}$ |

Chorus
 C $\frac{3}{4}$ $\underline{\underline{8}}$ | $\underline{\underline{8}}$ | $\underline{\underline{8}}$ | $\underline{\underline{8}}$ | $\underline{\underline{8}}$ |
Homman O - O - e - no - kau - i - u - pu - a - i - ku - u - Le - i hi Ki - a - hi
a - hi - O - ke - ka - ni - o - na - ma - nu D na
ritar
ho - la - o ke - a - u - mo - e

No 4. Malu i Ke Ao. H. Berger.

Galop $\text{F} \flat \text{C}$ $\frac{2}{4}$ $\underline{\underline{16}}$ | $\underline{\underline{24}}$ | $\underline{\underline{16}}$ |

Chorus
 C $\frac{2}{4}$ $\underline{\underline{16}}$ | $\underline{\underline{24}}$ | $\underline{\underline{16}}$ |
Ma - lu - i - Ke - Ao - Ke - a - hi - o - wai - lu - ku - ke - pa - ni - wai -
o - o - a - o Ma - lu - i - Ke Ao Ke - a hi o wai lu ku ke
pa ni wai o o - a - o

END



No. 1. The Old Plantation. J. Napier. ardy H. Berger. Tenor.

Introduction Andante. 8/8. Solo 8 4 5 2

Chorus
Leo Hoomau
Hoomau

Old Plan-tation na-ni O-e-Ho-me pu-me
ha-na i Rea-lo-hay Ka Lu-
O-Ka niu i Ka-po-li o-ke o-na-o-na

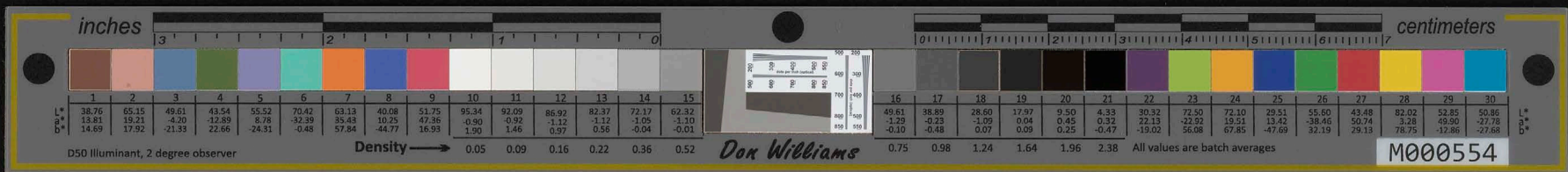
No. 2. Ua Hiki no me A'u H. Berger.

March 16/8

Chorus
Leo Hiki
H. Hoomau

U-a hi-ki no-me A'u-ke a-la o Ra Va-
bi-ne e a ke a-na no e i ke la-i ke
na-ni o-na pua-

START



No. 3. Like no a Like. Alice Everett. by J. Berger. Tenor.

Introduction Andante. Musical notation for piano introduction.

Chorus. Leo Hooman. Lyrics: O-o no kau i u-pu-a-i Ru-u Le-i hi-ki a-hi-a-hi O ke ka-ni-na ma-nu I na ho-la o ke a-u mo-e

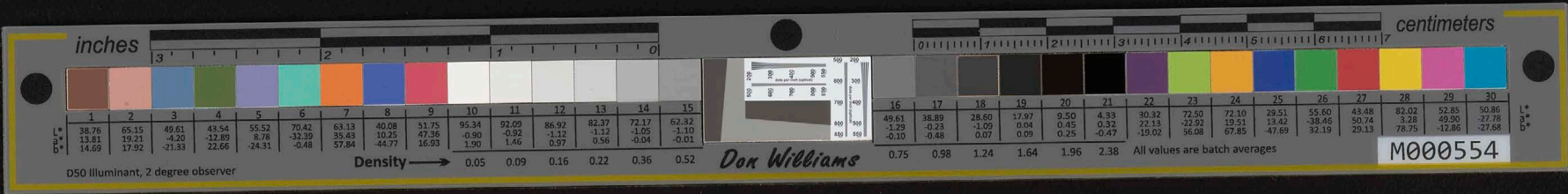
No. 4. Malu i ke Ao. J. Berger.

Galop. Musical notation for piano galop.

Chorus. Leo. Lyrics: Malu i ke Ao ke ahi o wai-luku ke pani wai o I-a-o. Malu i ke Ao ke ahi o wai-luku ke pani wai o I-a-o.

J. Berger Honolulu July 08

END



N^o 1. The Old Plantation - D. Nape arby He Berger. Basse.

Introduction Andante D^b 6 | 8 | 8 | 4 | 5 | 2 2 2 2 | 2

Chorus Leo Norman Old Plan-ta-tion-na-ni - O - e Ho-me pu-me ha-na-i - Kea - lo-ha - I - Ka - o - lu - o - Ka - niu - I - Ka - po - li - o - Ke - o - na - o - na -

N^o 2 Ua Hiki no me Ou He Berger.

March D^b 6 | 16 | 16 | 16

Chorus Leo Kiko U-a - hi - ki - no - me - Ou - u - Ke - a - la - o - Ka - va bi - re - e - a - ke - a - na - no - e - i - te - la - i - Ke Ka - ni - o - na - pu - a

START



N^o 3 Like no a Like. Alice Everett arby He Berger. Basse.

Introduction Andante *♩* | *♩* | *♩* | *♩* | *♩* | *♩* |

Chorus
leo
Lonnau
O - o - e - no - Kau - i - u - pu - a - i - Ku - u - le - i - hi - Ki - a - hi -
- a - hi - O - ke - Ka - ni - o - na - ma - nu - I - na - ho - la - o - Ke - a - u
mo - e.

N^o 4 Malu i Ke Ao. He Berger.

Galop *♩* *♩* *♩* *♩* | *♩* *♩* | *♩* *♩* | *♩* *♩* | *♩* *♩* | *♩* *♩* |
Ma - lu - i - Ke - Ao - Ke - a - hi - o - wai - lu - Ku - Ke
pa - ni - wai - o - I - a - o - a - o - Ma - lu - i - Ke - Ao - Ke - a - hi - o - wai - lu - Ku - Ke
pa - ni - wai - o - a - o

END



No. 1. The Old Plantation. D. Napier, arr. by H. Berger. Barre

Introduction *Andante* $\text{C} \flat \text{E}$ 8

Solo 8 4 5 2

Chorus
 Leo Hooman
 ha-na i kee - lo - ha - ritar Ka @ - lu
 @ - ka niu *Alto* Ka po-li @ Ke @ - na - @ - na.

No. 2. *Ma'iki no me A'u.* H. Berger.

March $\text{C} \flat \text{E}$ 16 16 16

Chorus
 Leo Kiko
 U-a hi-ki no-me A-u - ke a-la @ ka Va-
 bi-ne @ - a ke a-na no @ - i ke la - i ke
 @ na - ni @ na pua -

START



No. 3. Like no a Like. Alice Ewert. andy Berger.

~~Leo Bloom~~ Bloom

Introduction Andante.

Chorus
Leo Bloom

O - O - e no Kau i u - pu - a - i Ku'u
Le - i hi - ki a - hi - a - hi O ke Ka - ni o na
ma - nu I na ho - la o ke a - u mo - e

No. 4. Malu i ke Ao. J. Berger.

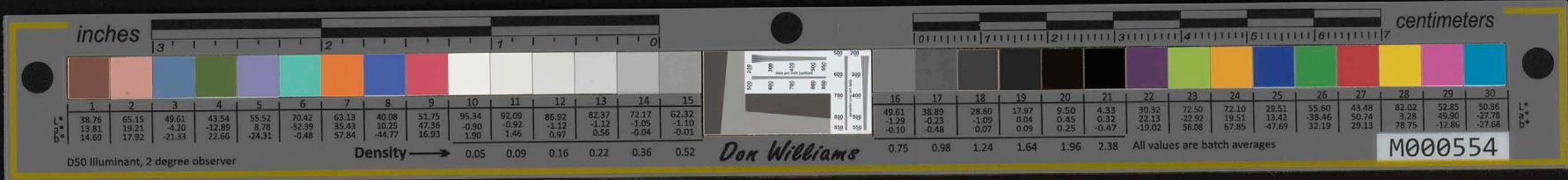
Galop

Chorus
Leo

Malu i ke Ao ke ahi o Wai - luku ke pani wai
o I - a - o - a - o Malu i ke Ao ke ahi o Wai - luku ke
pani wai o I - a - o.

J. Berger
Honolulu July 108

END



No. 1. The Old Plantation. D. Nape. arly H.B. Berger.

Flute.

PHILADA.

Introduction *Amte* C C

mp

Solo

ritard

Chorus

ritard *Leo*

Leo *ritard*

No. 2. Ua Hiki no Me a'u. H.B. Berger.

March.

mp

ritard

Solo

Chorus

ritard

H.B.

START



No. 3. Like no a Like. Alice Everet, w/ly J. Berger. Flute

Handwritten musical score for No. 3. Includes 'Introduction Andante', 'Solo', and 'Chorus' sections with various musical notations and performance instructions like 'ritar' and 'p'.

No. 4. Malu i ke Ao. J. Berger.

Handwritten musical score for No. 4. Includes 'Salop' section and 'Chorus' section with musical notations and performance instructions.

J. Berger
London July 08

END



No. 1. The Old Plantation. J. Napier by J. Berger.

1. Clarinet B.

Andante

Handwritten musical score for No. 1, 'The Old Plantation'. The score is written on ten staves. It begins with a treble clef and a common time signature. The tempo is marked 'Andante'. The score includes various musical notations such as notes, rests, and dynamic markings like 'ritar' and 'Solo'. There are also triplets and a 3/4 time signature change. The name 'Leo Hooman' is written in the left margin. The piece concludes with a double bar line and a final note.

No. 2. Ua Hiki no Me A'u. J. Berger.

March

Handwritten musical score for No. 2, 'Ua Hiki no Me A'u'. The score is written on five staves. It begins with a treble clef and a common time signature. The tempo is marked 'March'. The score includes various musical notations such as notes, rests, and dynamic markings like 'Solo p' and 'Chorus'. There are also triplets and a 6/8 time signature change. The piece concludes with a double bar line and a final note.

START



in B No. 3. Like no a Like Alice Everett. by H. Berger. Clarinet B

in B Introduction Andante. *H. Berger*

ritar

Chorus

H. Berger

ritar

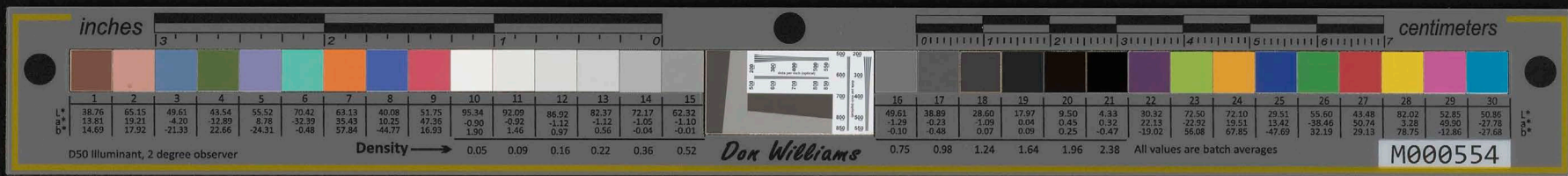
No. 4. Malu i ke Ao. H. Berger.

in B Galop. *H. Berger*

Chorus

H. Berger

END



PHILADA.

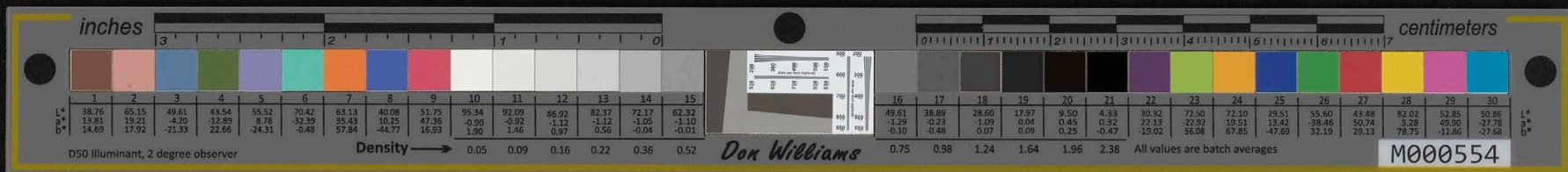
No. 1 The Old Plantation. J. Rap. by H. Berger. 2. Clarinet. B.

Handwritten musical score for No. 1. The score is written on six staves. The first staff is marked 'Mr. Looman'. The second staff is marked 'ritar Solo'. The third and fourth staves are marked 'Chorus' and 'ritar Leo Looman'. The fifth staff is marked 'Looman'. The sixth staff is marked 'ritar Looman' and ends with a double bar line and a 'D.C.' (Da Capo) instruction.

No. 2. Ua Hiki no Me a'u. H. Berger.

Handwritten musical score for No. 2. The score is written on five staves. The first staff is marked 'March' and 'Pohole'. The second staff is marked 'Solo p'. The third and fourth staves are marked 'Chorus' and 'Looman'. The fifth staff ends with a double bar line and a 'D.C.' (Da Capo) instruction.

START



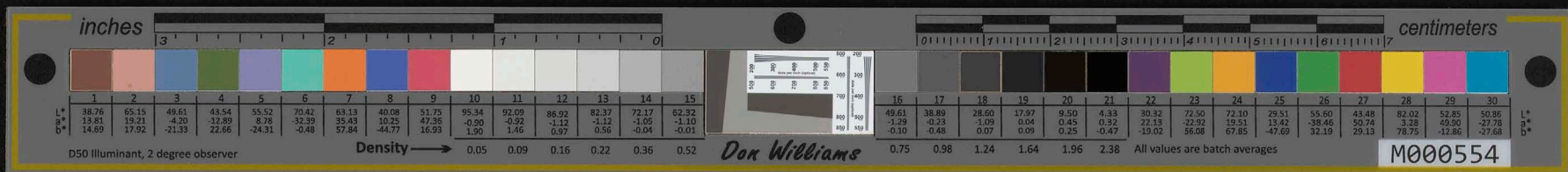
No. 3. Like no a Like. Alice Everett; arr. J. Berger. 2 Clarinet.

Introduction Andante. Musical score for 2 Clarinets. Includes markings for 'ritar', 'Solo', and 'Chorus'. The score is written on five staves.

No. 4. Malu i ke Ao. J. Berger.

Galop. Musical score for 2 Clarinets. Includes markings for 'ritar', 'Chorus', and 'Berger Honolulu July 1908'. The score is written on five staves.

END



No. 1. The Old Plantation. D. Nape. arry H. Berger.

1 Cornet. B.

PHILADA.

Introduction Andante p Hooman

ritar

ritar

Chorus

p Hooman Hooman

Hooman Hooman Hooman

No. 2. Ua Hiki no me a'u. H. Berger.

March p Pokole

Chorus

pp nake

Leg

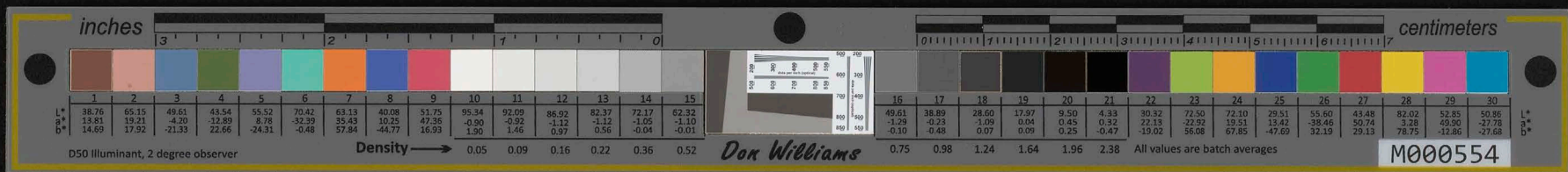
H.B.

Empty staff

Empty staff

Empty staff

START



No. 3. Like no a Like. Alice Everet. only H Berger. 1. Corn

Introduction Andante. *Hooman*

Hooman

ritar

Chorus

Hooman

ritar.

No. 4. Malu i ke Ao. H Berger.

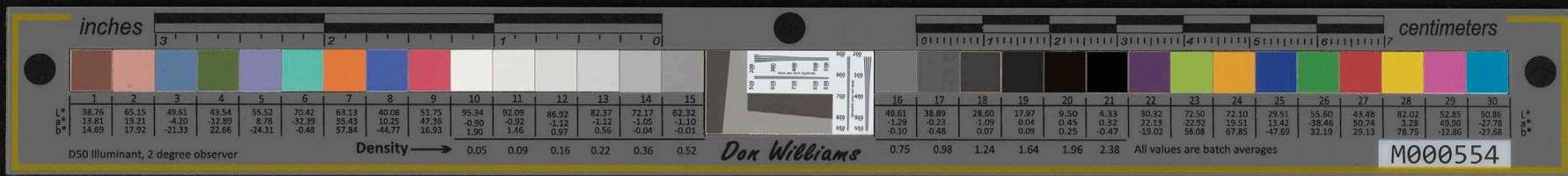
B Galop. *Sokole*

Chorus

Ruha

H Berger
Koruhia

END



No. 1. The Old Plantation. D. Napier by H. Berger. 2. Cornet B.

Handwritten musical score for 'The Old Plantation'. It includes an introduction in 6/8 time, a 'Hooman' section with various time signatures (8, 3, 5, 2) and 'ritar' markings, and a 'Chorus' section with 'Hooman' and 'ad lib' markings.

No. 2. Ua Hiki no Me A'u. H. Berger.

Handwritten musical score for 'Ua Hiki no Me A'u'. It is a march in 6/8 time, featuring a 'Chorus' section with 'pp nake' and 'Leo' markings, and ending with 'H.B.'.

START



Nº 1. The Old Plantation L. Nape arby H Berger. 2nd B. Cornet.

Introduction Andante $\text{F}\sharp$ C

Handwritten musical notation for the introduction of 'The Old Plantation'. It consists of four staves of music. The first staff is labeled 'Introduction Andante' and has a key signature of one sharp (F#) and a common time signature (C). The music is written in a treble clef. The second staff has the word 'Homman' written above it. The third staff has the word 'ritar' written below it. The fourth staff has the word 'Homman' written above it and 'ritar' written below it. The music ends with a double bar line and a repeat sign.

Nº 2. Ua Heiki no me A u H Berger.

March $\text{F}\sharp$ C

Handwritten musical notation for the march 'Ua Heiki no me'. It consists of six staves of music. The first staff is labeled 'March' and has a key signature of one sharp (F#) and a common time signature (C). The music is written in a treble clef. The second staff has the word 'Chorus' written above it. The third staff has the word '7' written above it and '7' written below it. The fourth staff has the word '7' written above it and '7' written below it. The music ends with a double bar line and a repeat sign.

START



N^o 3. Like no a like. Alice Everett on by H. Berger 2nd B. Cornet.

Introduction Andante $\text{G}\sharp\text{E}$

Chorus

Handwritten musical notation for the introduction and chorus of 'Like no a like'. The introduction is in 2/4 time with a key signature of one sharp (F#) and a tempo marking of 'Andante'. The chorus is marked with a 'C' time signature and includes a 'trumpet' part. The piece concludes with a double bar line and a 'D.C.' (Da Capo) instruction.

N^o 4. Mbalu i Ke Ao H. Berger.

Galop $\text{G}\sharp\text{H}$

Handwritten musical notation for the galop 'Mbalu i Ke Ao'. It is in 2/4 time with a key signature of one sharp (F#). The piece includes a 'trumpet' part and a chorus starting at measure 16. The notation is characterized by rapid sixteenth-note patterns. The piece concludes with a double bar line and a 'D.C.' (Da Capo) instruction.

END



No. 1. The Old Plantation. D. Napier by W. Berger. 1. 2. Alto's. E.

PHILADELPHIA

Introduction Andante $\text{F}\#\text{C}$ *Hooman*

Hooman *ritar.*

ritar *ritar*

Chorus *Hooman* *Hooman*

Hooman *ritar*

No. 2. Ua Hiki no Me a'u. W. Berger.

March $\text{F}\#\text{C}$ *Sokole*

pp nahe *pp* *Chorus* *Leo*

pp *Leo*

Leo *H3.*

Empty musical staves.

START



No. 3. Like no a Like. Alia Ever et arly H Berger. 1, 2 Altos E^b

E^b

Introduction Andante p *Hooman*

Musical staff with notes and rests.

Musical staff with notes and rests.

Hooman
Chorus

Musical staff with notes and rests. Includes *ritar* marking.

Hooman

Musical staff with notes and rests. Includes *ritar* marking.

Hooman

No. 4. Malu i ke Ao. H Berger. *Adinoo*

E^b

Galop. $2/4$ *Pokole*

Musical staff with notes and rests.

Musical staff with notes and rests. Includes *12*, *8*, and *16* markings.

Chorus

Kuha

Musical staff with notes and rests. Includes *7* marking.

July 108

END



No. 1. The Old Plantation. J. Napier. arr. H. Berger. Trombone

Introduction *Andante* *p* Trombone

ritar. *p* Trombone

Chorus *p* Trombone

p Trombone ritar.

No. 2. Ua Hiki no me A'u. H. Berger.

March *pp* *nahe*

pp *nahe*

Chorus *pp* *nahe*

pp *nahe*

pp *nahe* HB

Empty musical staff

Empty musical staff

Empty musical staff

START



N^o 1. The Old Plantation. L. Halse. arby H. Berger. Trombone.

Introduction Andante 9/8. Handwritten musical notation for the first piece, including notes, rests, and dynamic markings like 'ritar' and 'Horman'.

N^o 2. Va Hike no me Au. H. Berger.

March 9/8. Handwritten musical notation for the second piece, including notes, rests, and dynamic markings like 'poco', 'p.p. Hale', and 'Chorus'.

START



N^o 3. Like no a Like. Alice Everett arby H Berger. Trombone.

Introduction Andante 2/4

ritar.

Chorus

DE

N^o 4. Malu i Ke Ao H Berger.

Galop 2/4

Chorus

DE

END



No. 1. The Old Plantation. & Name by H. Berger. Viola.

Introduction Andante 3/8 C

mf *Hoomau*

ritar *Solo* *p* *Hoomau*

Chorus *Hoomau* *4*

Solo *ritar* *Ad.*

No. 2. Ua Hiki no me a'u H. Berger.

March. 3/8 Bb E *Pokole*

Solo *Chorus* *3* *7* *Ip 4/4r Pokole*

3 *7* *33*

33

33

START



No. 3. Like no a Like Alice Everett. arr. by H. Berger. Viola

Introduction *Andante* $\text{B}\flat$ Cr
p Hooman

ritar *Solo*
p

Chorus

ritar

ff.

No. 4. Malu i ke No. H. Berger.

Galop $\text{B}\flat$ $\frac{2}{4}$

Solo
p *Polka*

Polka *Chorus*

H. Berger
Hooman *July 1/08*

END



No. 1. The Old Plantation. D. Napier, arr. by H. Berger. Bass.

Introduction Andante $\text{D}^b \text{C}$
mf Hooman

ritar

Solo
Hooman

ritar

Chorus
Hooman $\text{F} \text{p} \text{F} \#$

ritar

No. 2. Ua Hiki no me a'u. H. Berger.

March $\text{D}^b \text{C}$
F. Pokole

Solo
p p

ritar

Chorus
F $\text{p} \text{F} \#$

ritar

H3

START



No. 3. Like no a Like. *Wie Everstade* H Berger. *Basse*

Introduction *Andante*. *p* *Hooman*

ritar *Solo* *p*

Chorus *Hooman*

Hooman ritar

No. 4. *Malu i ke Ao.* H Berger.

Galop. $\frac{2}{4}$

Solo *p* *Pikole*

Chorus

H Berger

END



No. 1. The Old Plantation. D. Nape w by He Berger Drums and Bells

Introduction Andante $\text{C}\flat$ *Bells or Triangle*

ritar

okole

ritar *Chorus* *Horman*

okole *Horman*

ritar *D.C.*

No. 2 Ua Heiki no me Au He Berger

March $\text{C}\flat$ *Castanet* *Frisette*

Bells and Tri.

Chorus

D.C.

START



N^o 3. Like no a Like Alice Evereh arby He Berger. Drums and Bells.

Introduction Andante $\text{C}\flat$ $\text{B}\flat$

Bells or Tri.

ritar

Chorus

ritar

fin

N^o 4. Make i te Ao He Berger.

Galop $\text{C}\flat$ $\text{B}\flat$

Castanet

triangle

15 Solo

Bells or Triangle

Chorus

Castanet

triangle or drums

16

Cast.

Drums

END



No. 1. The Old Plantation. D. Nape. arby H. Berger. Drums, Bells.

Introduction *Andante*. p Bells or Triangl. Hooman

ritan

p Pokole

p ritan

Chorus

p Hooman Pokole Hooman Pokole

Hooman ritan Pokolelohi.

No. 2. Ua Hiki no Me A'u. H. Berger.

March. p *Castan* *Triangl*

p Bells or Tri. Bells or Tri.

Chorus

p Bells or Tri. Bells or Tri.

Leo

p Bells or Tri. Bells or Tri.

START



No. 3. Like no a Like. Alive event. arby Berger. Drums Bells

Introduction Andante C C

Bells or Triangles

ritar

Chorus

ritar

No 4. Malu i ke lo. H Berger.

Galop C 2 4

Castagnets

Triangle

15 Lolo

Chorus

Bells or Triangles

16

Castagnets

Triangle or Drums

B. Dr. Triangle

B. Dr.

HB
Alonson
July 10/08

END