



A 1 2 3 4 5 6 M 8 9 10 11 12 13 14 15 B 17 18 19

Alto

la - - - la - - - la - - - la - - -

Soprano

Puana

He aloha o Waialua I ke ehukai o Puana
 O ka we-he aka lan o Kahu Oka hoku a ka Miko Liu
 Pa kohaihai ka Makani Ahiahe mai ika kai
 O lu ai hoi ka no-ho-na Ana hua o ka ka-ona -

Tenor

Puana

He aloha o Waialua I ke ehukai o Puana
 Pa kohaihai ka Makani Ahiahe mai ika kai



A
1
2
3
4
5
6
M
8
9
10
11
12
13
14
15
B
17
18
19

M-93 # 269

Rec'd _____ 193____

Silvestro Kalani's Collection

Silvestro Kalani's Collection

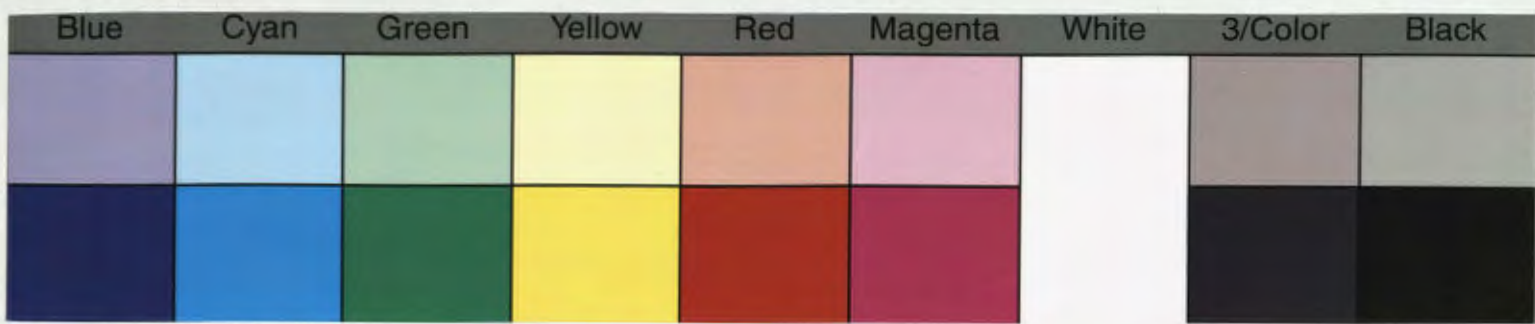
Rec'd _____ 193____ M-93 # 269

Silvestro Kalani's Collection

Rec'd _____ 193____ M-93 # 269

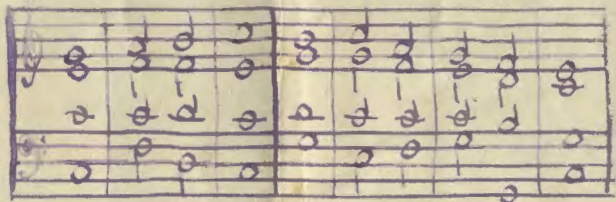
Silvestro Kalani's Collection

Rec'd _____ 193____ M-93 # 269



Liliuokalani Collection

#269



Helu 1.

- 1 E ka Ma- | -kua | Mana, ma ou ka paemo- | -ku e | noi | nei.
- 2 Na | kou | lima, ko makou La- | -ni e | ala- | -kai.
- 3 Hoopomaikai | e ka | Haku, i ka ma- | -kia o | kona | au.
- 4 E laupai | ka ai- | -na, a | hauo- | -li nu- | -i.
- 5 Na kupa o | ka Mo- | -i, e | hoo- | -la a | mau.
- 6 Na waiwai | pomai- | -kai, e | ko- | -mo | mai.
- 7 A hauoli | na au- | -puni, i | ko nei | lana- | -kila.
- 8 Ke aloha me ka | malu- | -hia, e | mau | lo- | -a.
- 9 A nou | e ka | Haku, na ho- | -omai- | -kai pau | ole.
- 10 I na | kau a | pau, a mau | loa- | -'ku A | mene.



Helu 2.

- 1 E ka Makua Mana ! ke mohai | nei ma- | -kou,
I ke gula me na momi no | ko ma- | -kou Mo- | -i.
- 2 I ke gula makamae no ke Alii | oia- | -io,
Hoailona o ke aloha | oni- | -paa mau | loa.
- 3 Hoike o na puuwai kupaa | kila- | -kila,
Lamalama me ka | nani | kama- | -hao.
- 4 Ka nani o ka mukupuni | wehi- | -wehi,
Hoopunana na pomaikai | me ka | malu- | -hia.
- 5 Ke akoakoa nei e ike i ko la- | -kou Mo- | -i,
Ka hooilina hookahi mai ka- | -hiko | loa | mai.
- 6 I kohoia e na ma- | -kaai- | -nana,
I poni ia e ka Haku, ke A- | -kua | Mana | Loa.
- 7 A nou ka nani ka Hemo- | -lele a | mau,
No ka manawa | pau o- | -le A- | -mene.

A 1 2 3 4 5 6 M 8 9 10 11 12 13 14 15 B 17 18 19



A
1
2
3
4
5
6
M
8
9
10
11
12
13
14
15
B
17
18
19

[Faint, illegible text, likely bleed-through from the reverse side of the page]

#769

Hele 1
u 2.

In Hawaiian

[Faint, illegible text, likely bleed-through from the reverse side of the page]