

#451

Ihiihi i ka Wekiu.

4/4
345123456
551714
11 " "
5557721

1

Ihiihi ka pua i ka wekiu,
I ke kaomi ia e ke Kehau,
Hui ai ka noho'na o ka wao,
Me ka ua tilihune o uka,

Cho.—A heaha la ka hana a ka Palaf,
E tube mai la i ka nabele
Hele no oe a ike mai
Mahie luna ua lia loko.

2

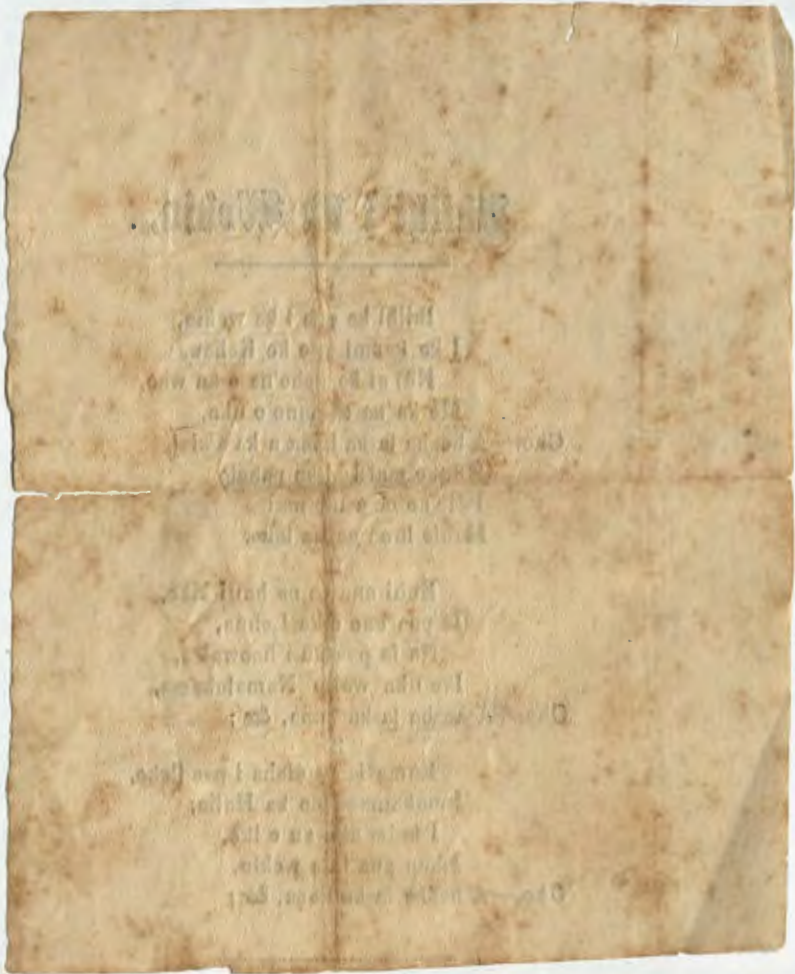
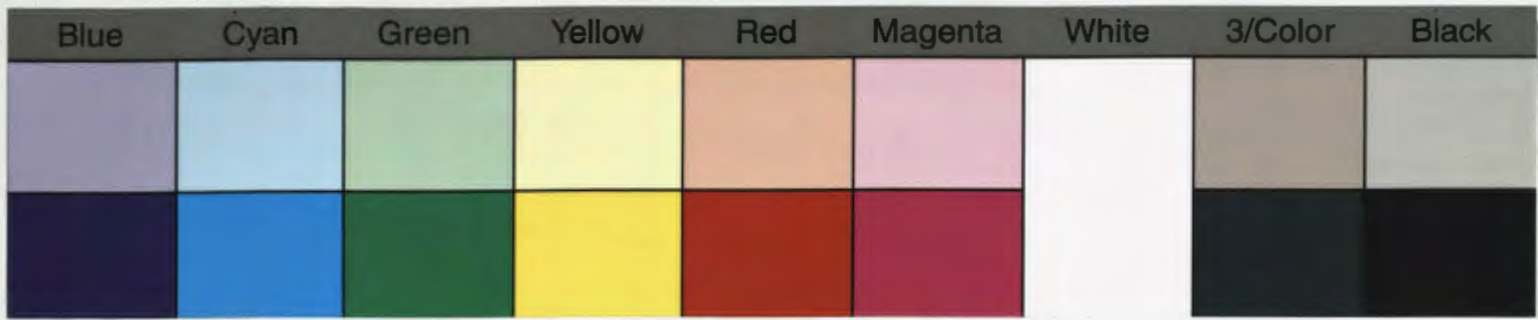
Kuhi ana oe na haa i kiko,
Ia pua ono o ka Lehua,
Na ia pua au i hoowalea,
Ike i ka wai o Namalokama,

Cho.—A heaha la ka hana, &c;

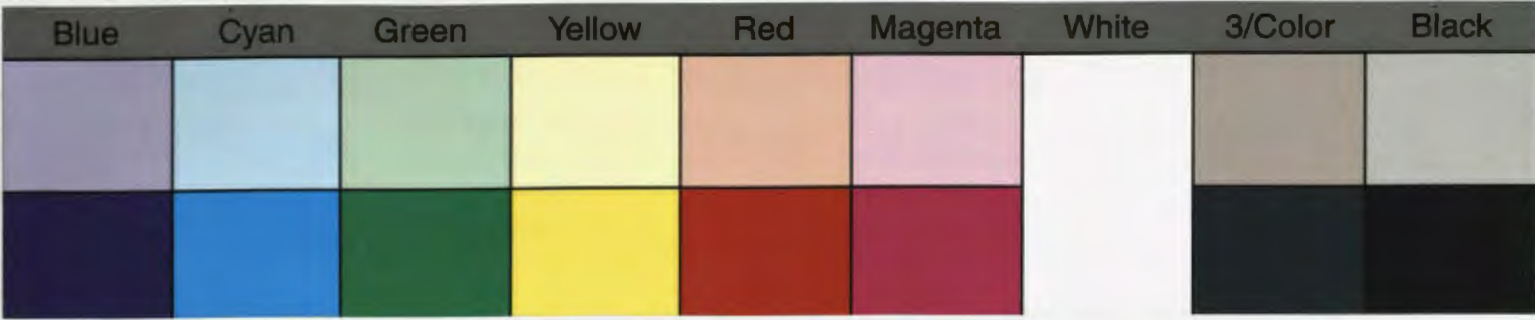
3

Kama ia ke aleha i paa Iloko,
I makemaka no ka Halia,
I halia aku au e ike,
I kuu pua i ka wekiu,

Cho.—A heaha la ka hana, &c;



A
1
2
3
4
5
6
M
8
9
10
11
12
13
14
15
B
17
18
19

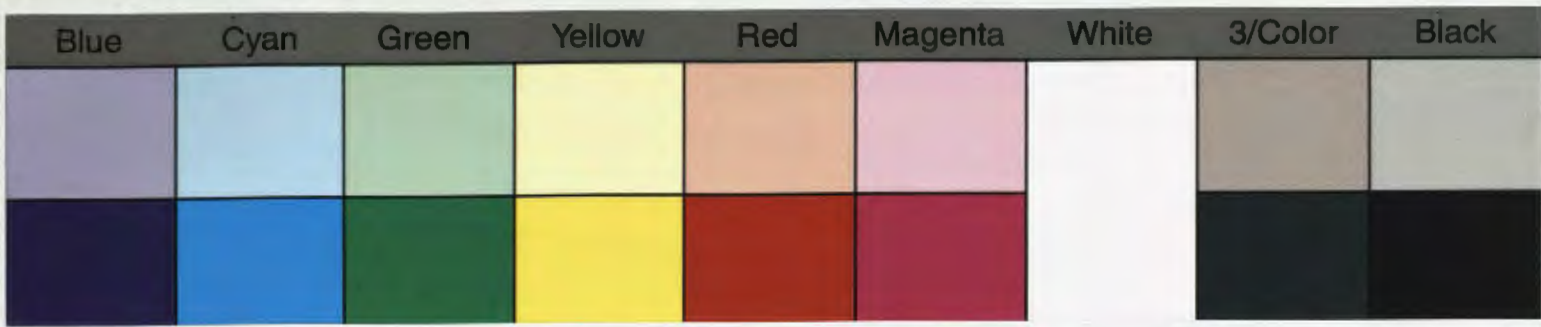


A
1
2
3
4
5
6
M
8
9
10
11
12
13
14
15
B
17
18
19

#451

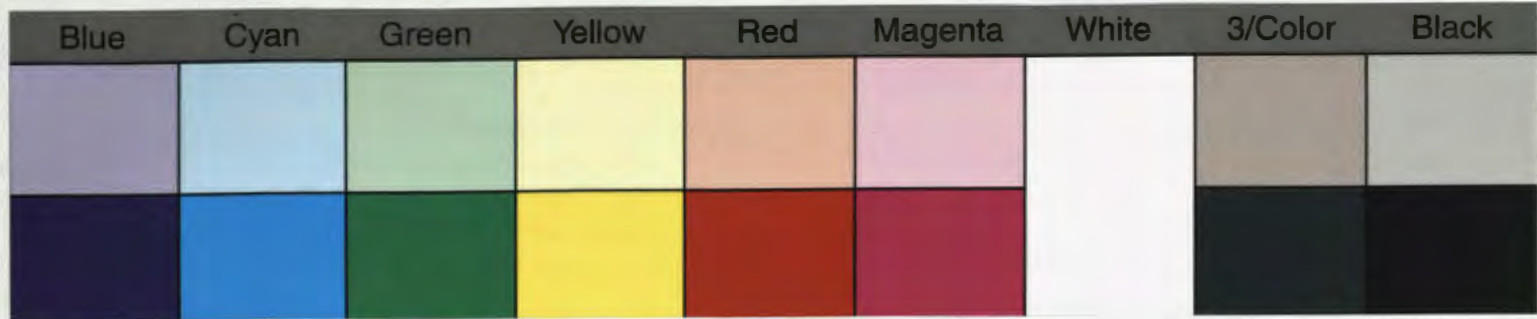
Auha oe e ka law makali
Apoheohe lili oka uka in
A ka manu wale o ka manu
ua hoi wale ia e ka kuhioi
Apoheohe ^{hona} i kapa ma aali
ka makani ~~o ka~~ o ka

^{Ka hiki}
I aloha ia mai oe e ~~keo~~
E hiki i ka lipo ma ka gabale
E hiki en o ka ~~one~~ ~~ka~~
Iba lo ~~ka~~ a ka ~~ma~~
E hiki ^{E hiki} i ka alala i ka aloha
Hikina ia oe e ka hoi la
Hani no wai law ohi ai
Hau ^{no} ia e au wale mai
Hoolai heia ua



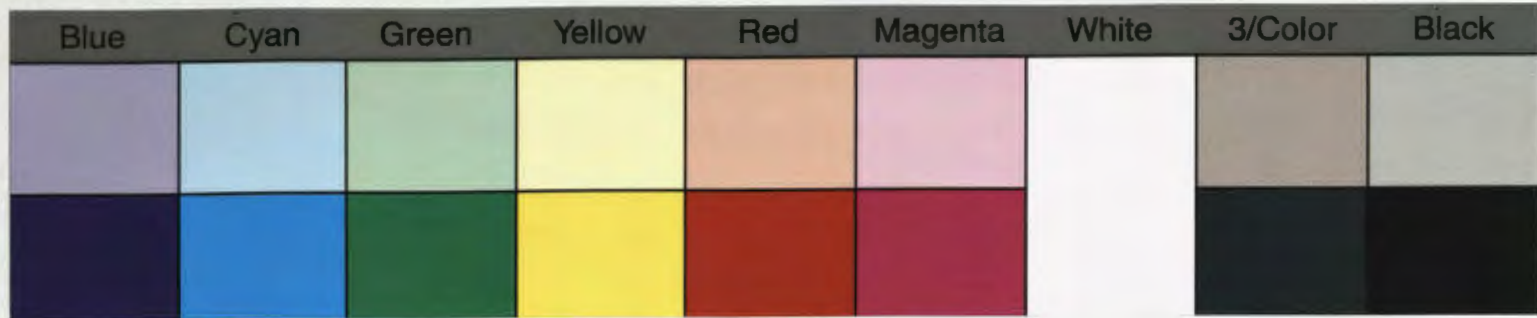
#451

5002
201



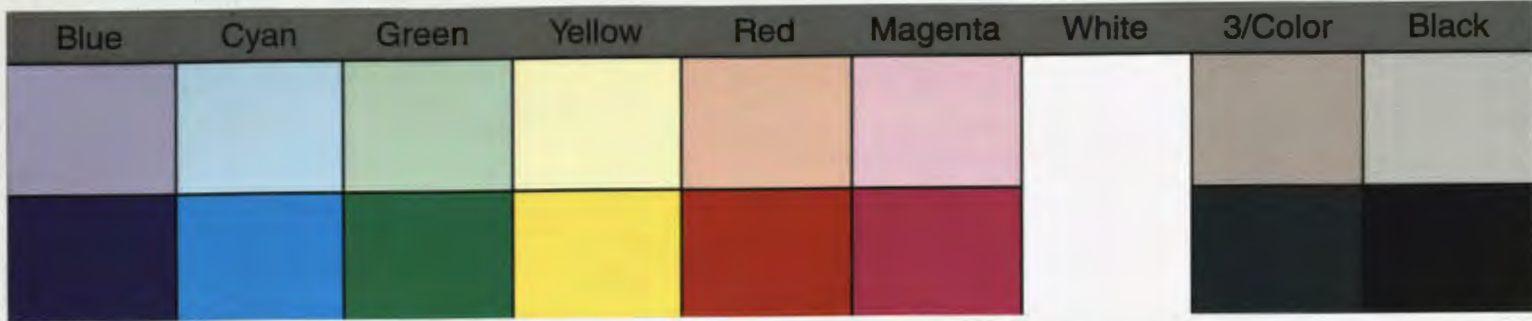
#457

He manao ko'u
Ia oe e ka lipo - La Iua i Lunalilo
Hoi mai e ke aloha - Ipona i ka wai
I
Ua ka mākani e - aea
Kala nīhi ana mai -
Iuli pono mai oe e -
I lōhe aku oe e -
Ile mi nei leo -
Iole hoi mai -
Keia kumehana
Ia ka hikiina la
Ia hikiia i Haakaa



4 copy of songs

#451



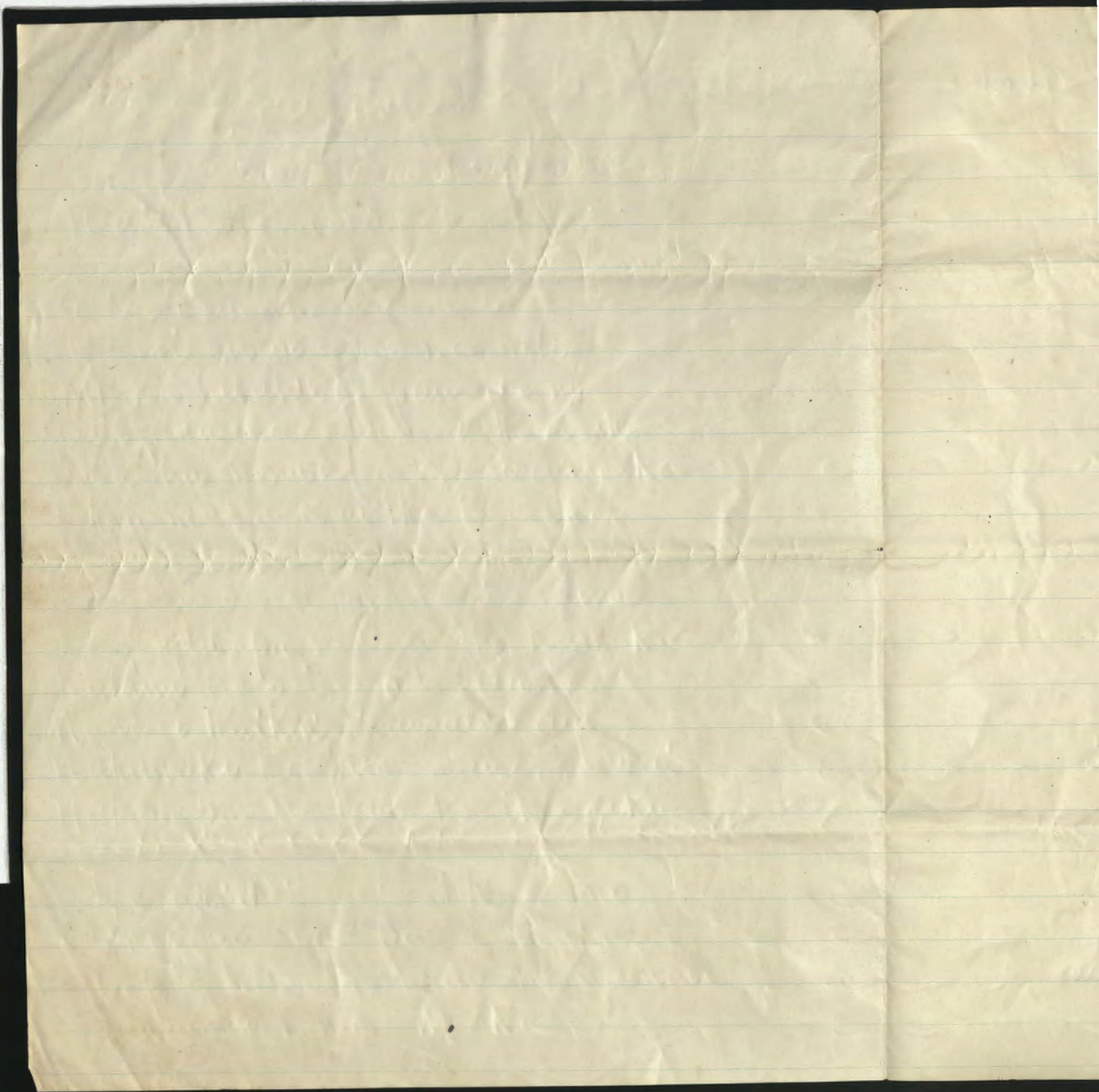
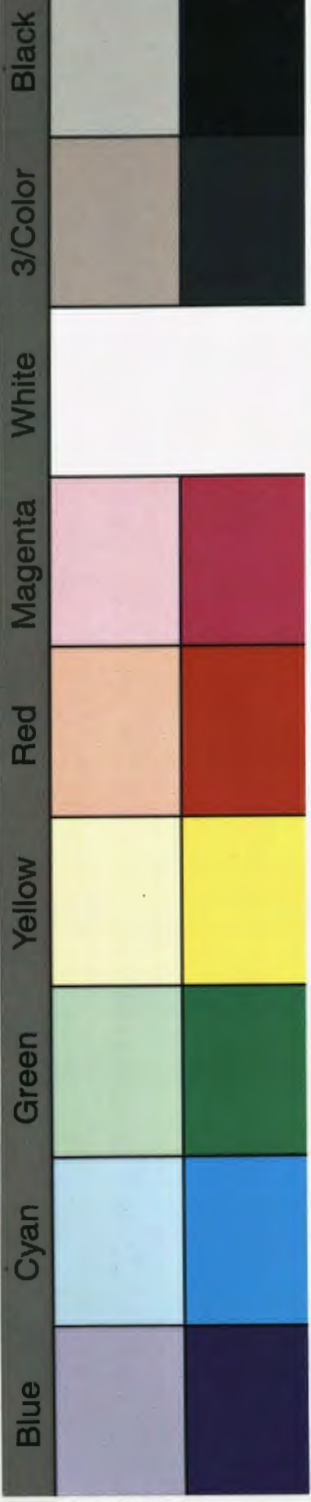
#451

He mele inoa no ke lii Kalakaua

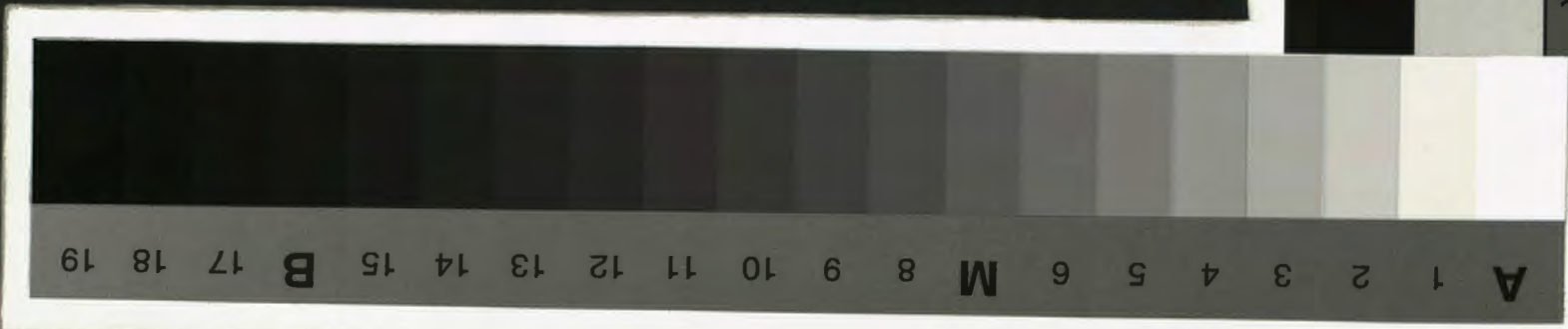
Nani Kuu hilahila e noho nei - e
 Hele wale ka manure a ka lima - e
 A ka loulou hoi mai - e
 Ho hoi mawa me ka neli - e
 Me ka hilahila pau pu no - e
 Ahi ^{loko} wewela i ka makemake - e
 I ka hu honua a ka waimaka - e
 A kuu maka ka ike ika eha - e
 Halanala no e hanini - e
 Ka hamu kolopaa oia hamu - e
 Ka lapalapa huila o ke Kanaka - e
 Kahimu holo ia ake Aloha - e
 Nana i kuuhi nawali au - e
 Nakumaku ka pua haw i kawai - e
 Napanapa ka lau ke ike aku - e

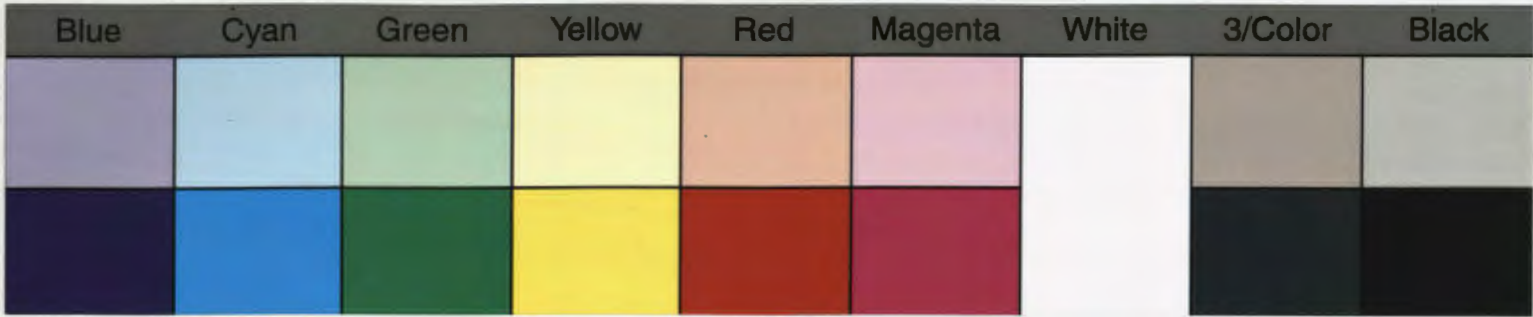
 He ukiuki keia i ka lono - e
 Lono au ma pa Kahaka oe - e
 A pa Kanaka wau manawanas - e
 Manawanas i na Maka - e

A 1 2 3 4 5 6 M 8 9 10 11 12 13 14 15 B 17 18 19



#451





#457

He mele ino ai no ke Keiki