

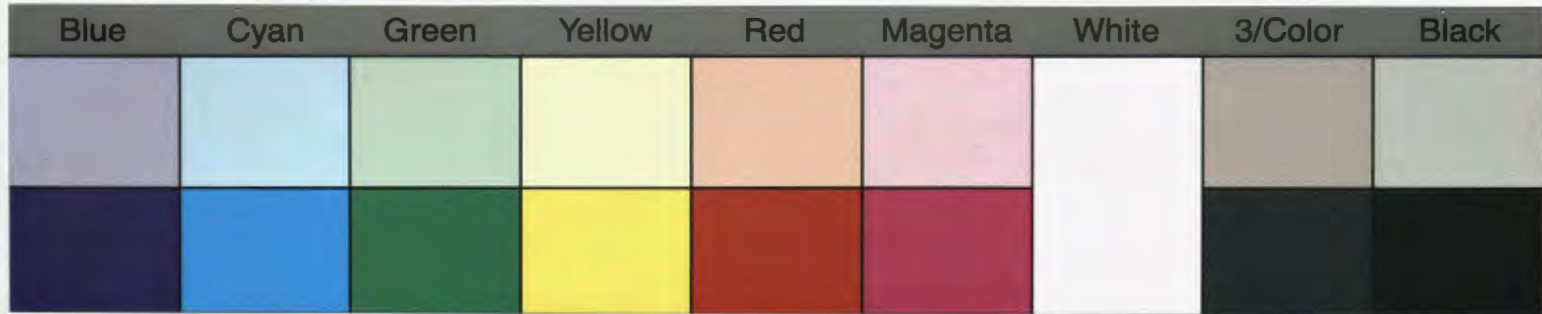
No date.
 Words of 1st
 Anthem by
 Liliuokalani

588

National Anthem

1.
 E ka māhina māna ~~mau~~
 māhina māna ia māhina
 E hāhā aku nei
 me ~~ka~~ ^{ma} wāwā hāhā
 E māna ka māhina
 O nei Pae Aina
 Maui Hawaii a Nihau
 Malalo o kou māna.

2.
 E ka Hāhā mālama māna
 Iho māhina nei Mo'i
 E māna kōna oho ana
 Mālama oha oha ohi
 Hāhā māna i ke Liloa
 Māhā o hōna māna
 I māna kōna māna ohi
 E oha, e oha ka māna



A
1
2
3
4
5
6
M
8
9
10
11
12
13
14
15
B
17
18
19

31
Malalo o lou Alhamaui
Na lili o ke Aupuni
Ke ~~is~~ ~~mai~~ ~~ia~~ ~~lakou~~
Me ke loha, Ahonui
Na Mahasinana Hou
Ka lehulehu no
E ola mau onakou
I hou mau mau.

Music & words composed by
Lidia L. Dominic.

My dear Brother
If there are any
corrections to be made. please
make them and send them
back to me immediately
so that I might be able to
send the right copy to his
Majesty. Yrs in haste
Lidia Dominic

This is the last chorus
which I forgot to insert on
the other page after the last
verse.

E ongu ke Ba'o ha Aina
Ona hou hono maia
A ma hou ongu maia
E ola o ke loha
L. D.

This is splendid.

Yours &c
B.K.