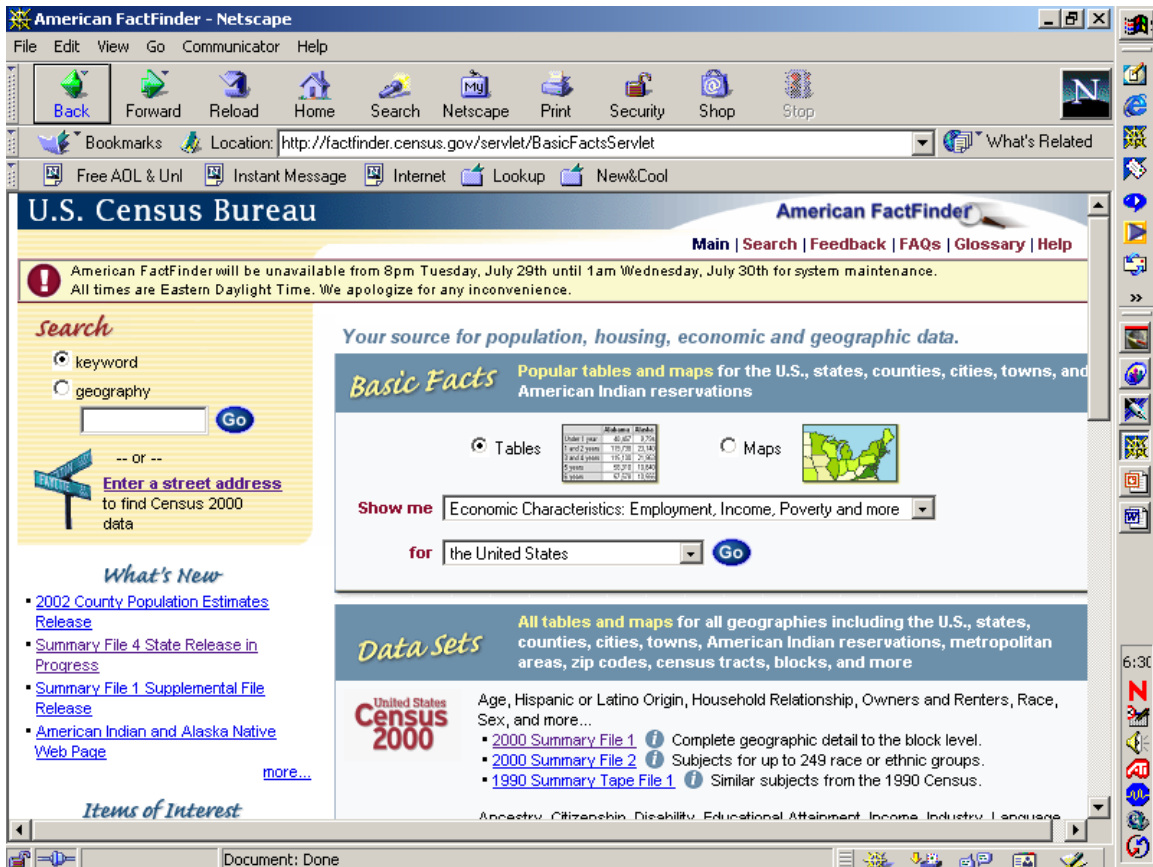
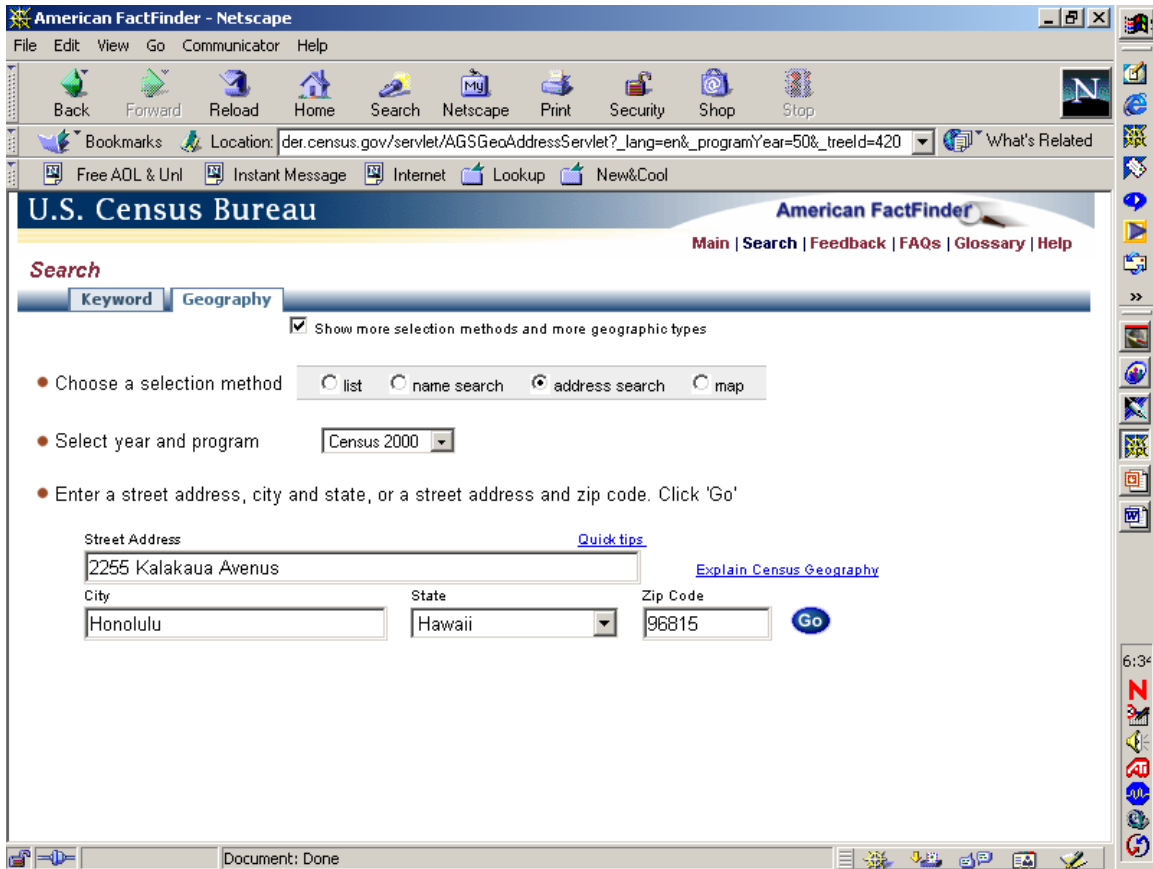


Exercise 2: Percent of persons who are Native Hawaiian and Other Pacific Islander for your census tract/neighborhood and how persons in your census tract/neighborhood commute to work.

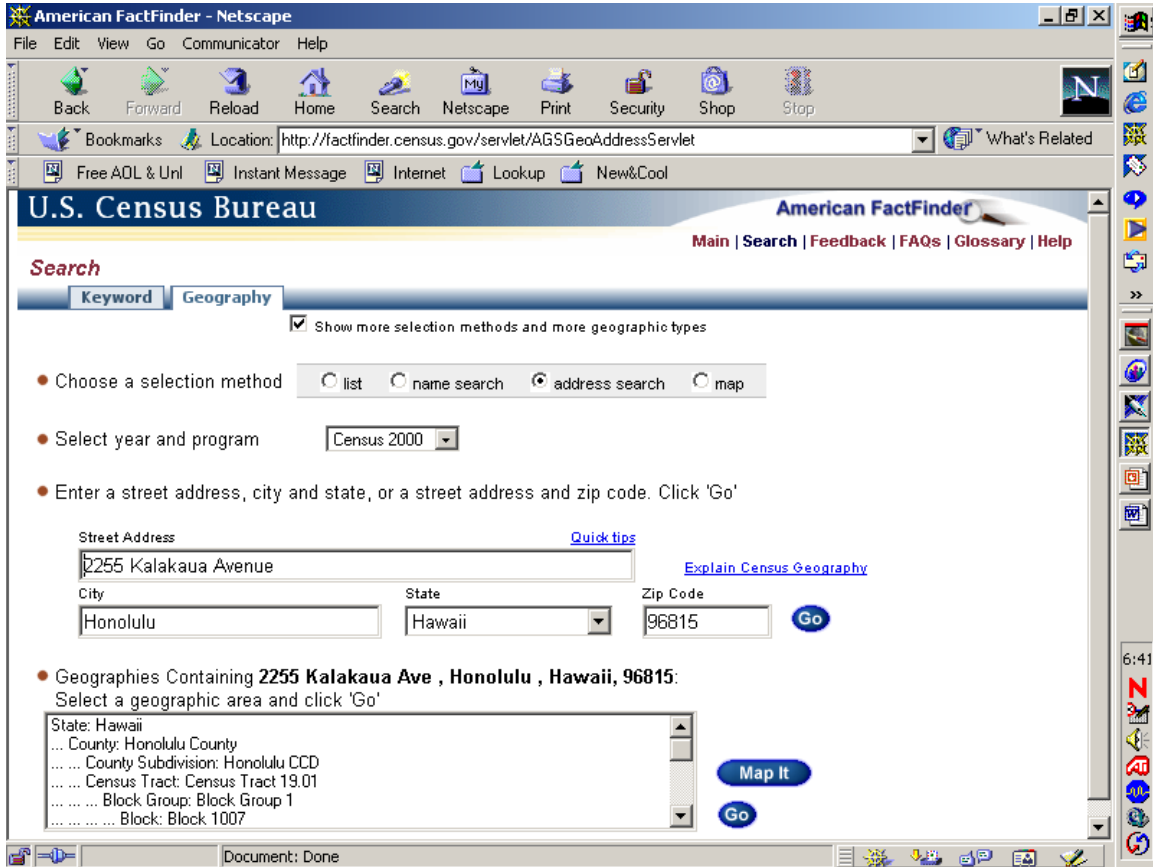
Step 1. Click on “Main” on the menu bar to return to the American FactFinder Homepage. Click on “Enter a street address”.



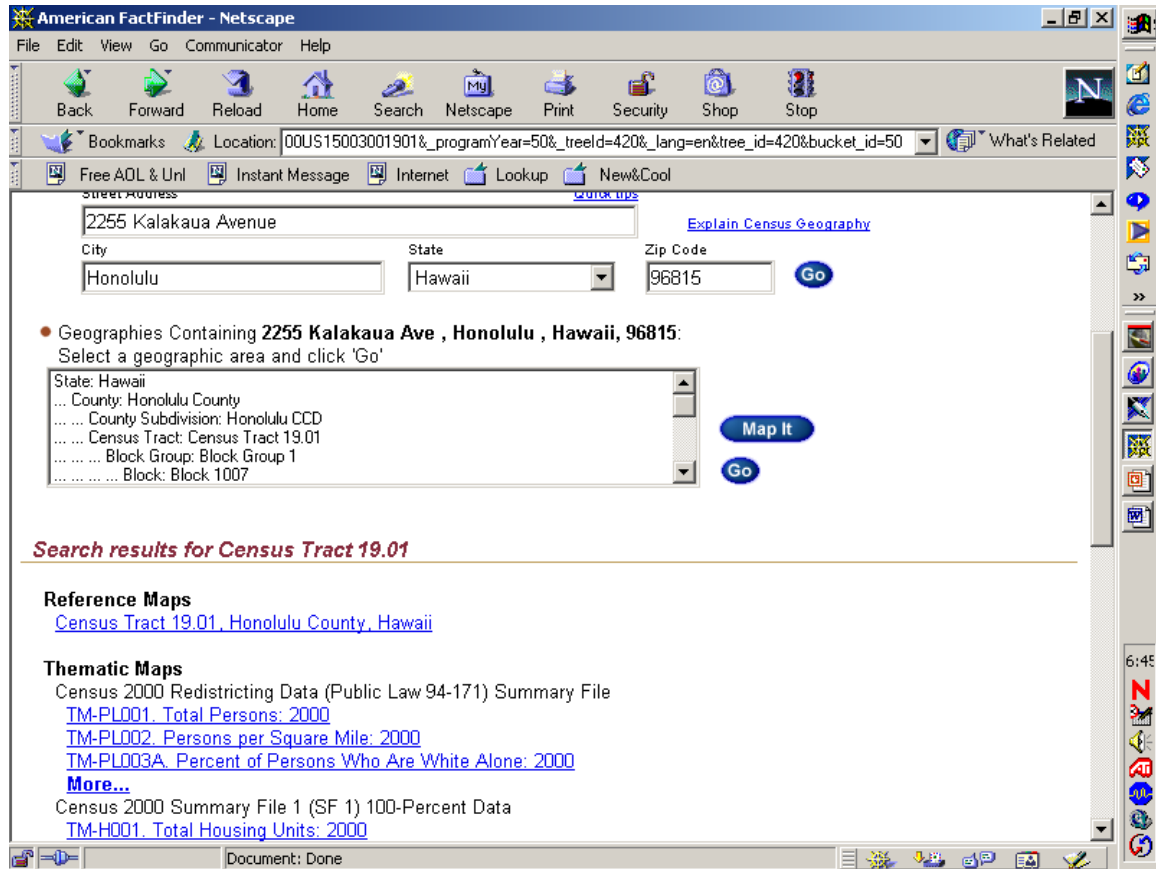
Step 2: Type your complete address and click “Go”.



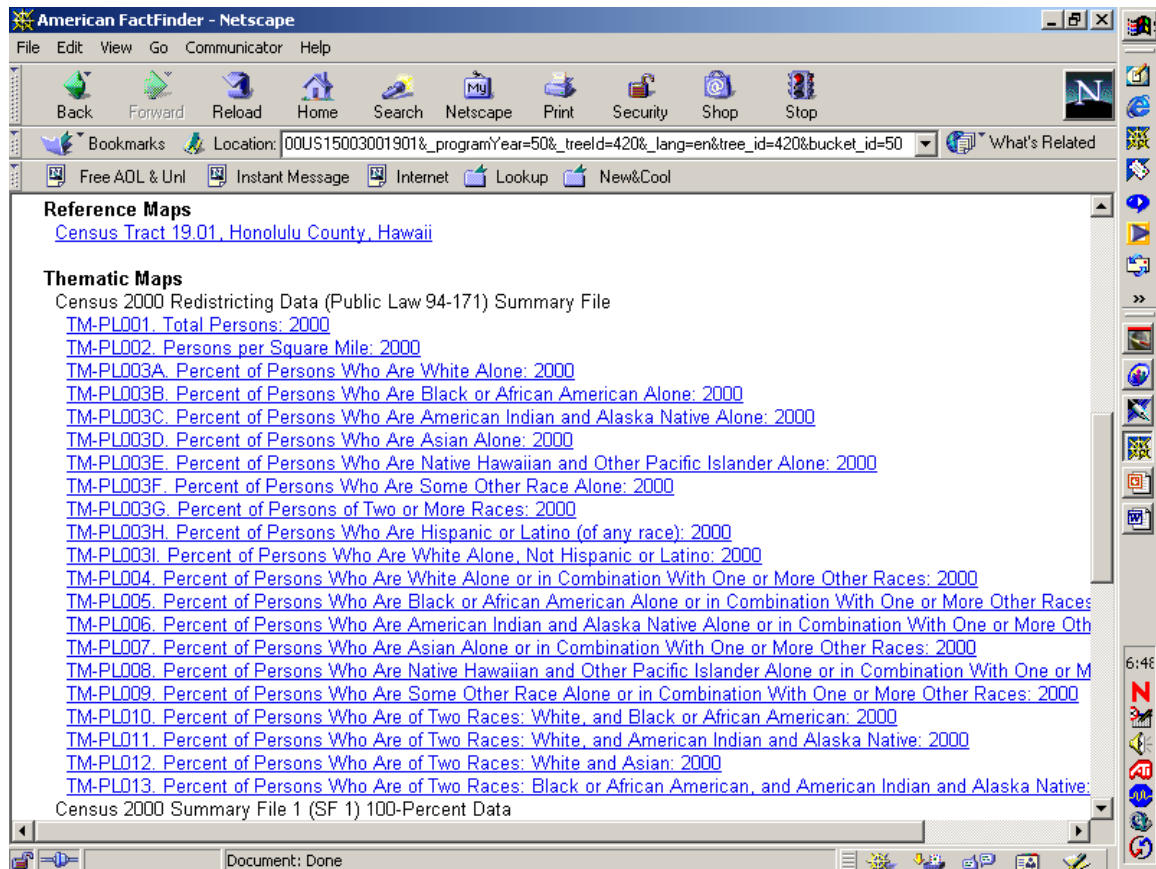
Step 3: Scroll down and select your “Census Tract” and Click “Go”.



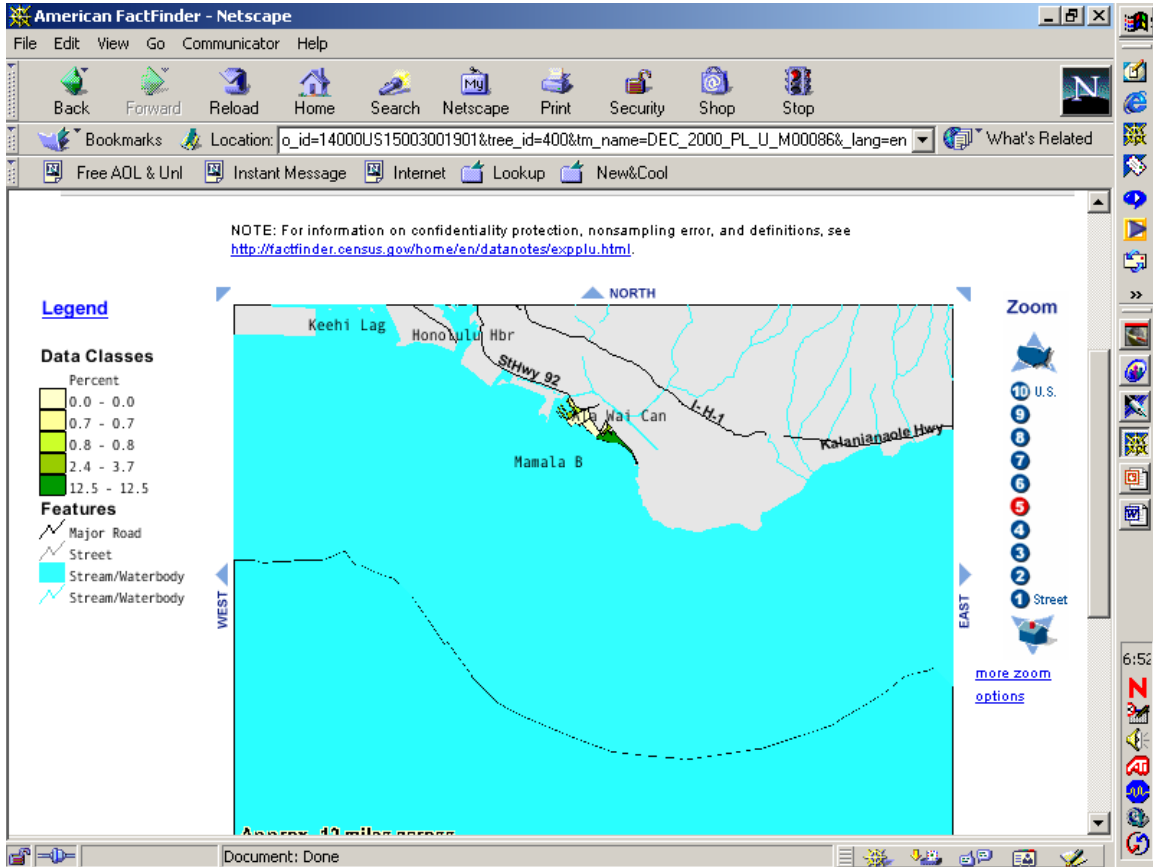
Step 4: Under “Thematic Maps” Click on “More”.



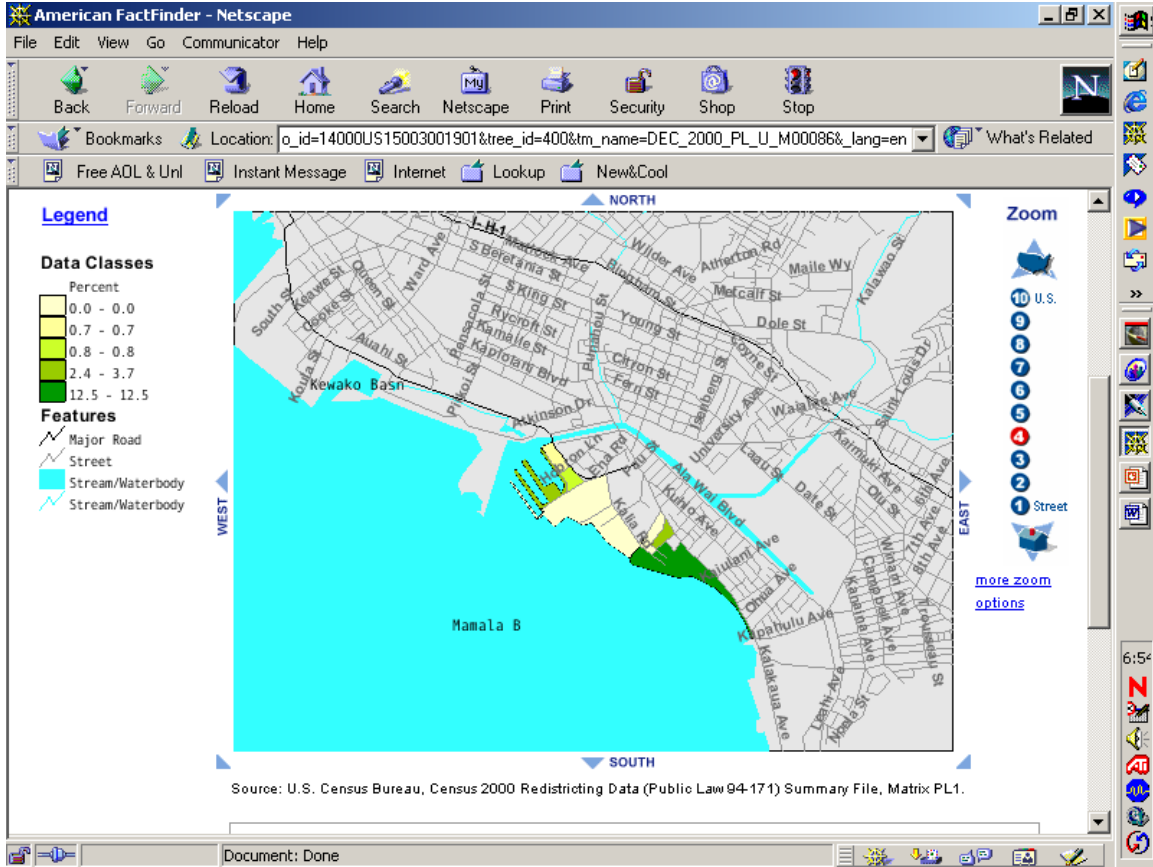
Step 5: Scroll down and Click on “TM-PL003E (Percent of Persons Who Are Native Hawaiian and Other Pacific Islander Alone: 2000).



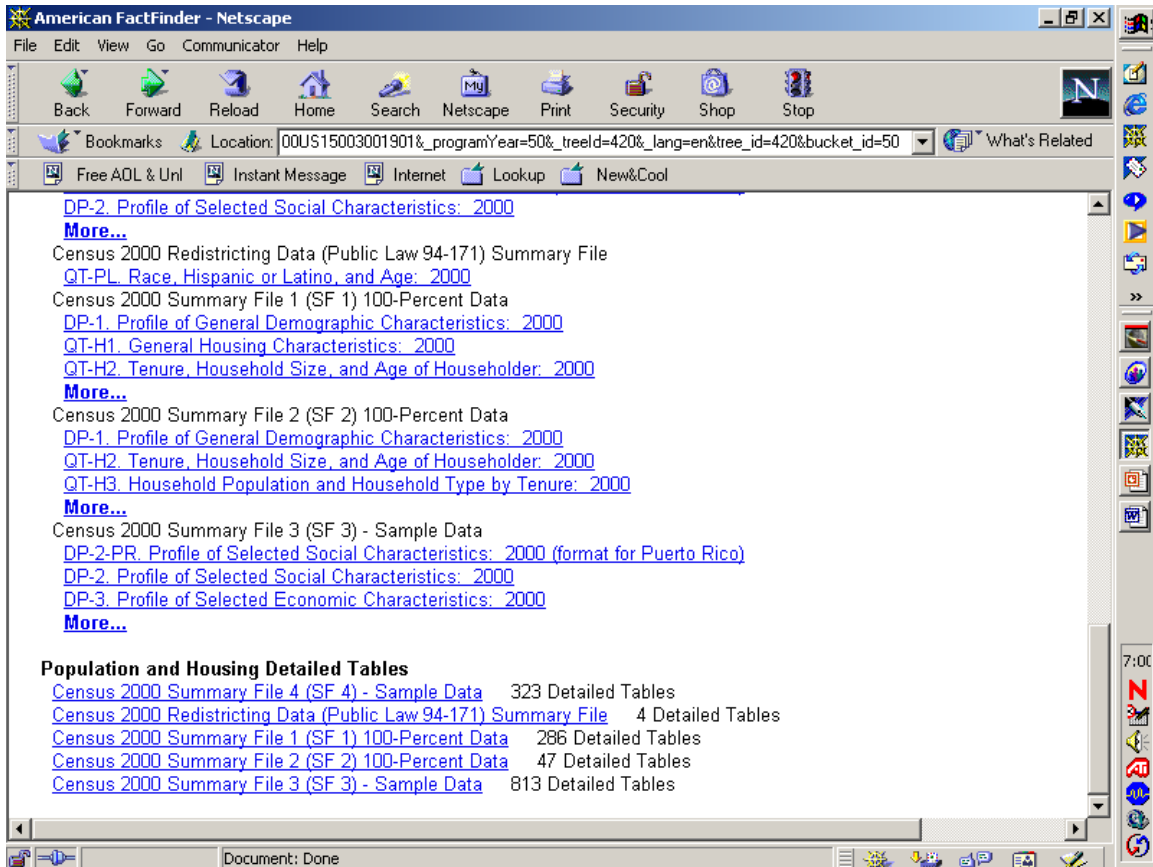
Step 6: View the Map. Click on the location of your area on the map to zoom in for a closer view.



Step 7: View the map.



Step 8: Click the “back button” twice (may need to hit it 3 times). Scroll down to “Population and Housing Detailed Tables” and Select “Census 2000 Summary File 4 – Sample Data”.



Step 9: Go to “Change Selections” on the menu bar and select “Tables”.

American FactFinder - Netscape

File Edit View Go Communicator Help

Back Forward Reload Home Search Netscape Print Security Shop Stop

Location: 0US15003001901&mt_name=DEC_2000_SF4_U_PCT001&_msg=CH_SEL_TAB&_lang=en

Free ADL & Uni Instant Message Internet Lookup New&Cool

U.S. Census Bureau American FactFinder

Main | Search | Feedback | FAQs | Glossary | Help

Detailed Tables | Options | **Change Selections** | Print / Download | Related Items

- Tables
- Geography
- Race or Ethnic Groups
- Ancestry Groups
- Data Set

[Load Query](#) | [Save Query](#)


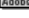
PCT1. TOTAL POPULATION [1] - Universe: Total population
Data Set: [Census 2000 Summary File 4 \(SF 4\) - Sample Data](#)

NOTE: Data based on a sample. For information on confidentiality protection, sampling error, nonsampling error, and definitions see <http://factfinder.census.gov/home/en/datanotes/expst4.htm>.

Census Tract 19.01, Honolulu County, Hawaii	
Total	738

U.S. Census Bureau
Census 2000

Standard Error/Variance documentation for this dataset:
[Accuracy of the Data: Census 2000 Summary File 4 \(SF 4\) - Sample Data \(PDF 141.5KB\)](#)

 The letters PDF or symbol  indicate a document is in the [Portable Document Format \(PDF\)](#). To view the file you will need the [Adobe® Acrobat® Reader](#), which is available for free from the Adobe web site.

javascript:goServletHref('DTSubjectShowTablesServlet', '?_lang=en', true)

Step 10: Scroll down and Select table “PCT 55 – Means of Transportation to Work for Workers 16 Years and Over.” Click “Add” then “Show Table”.

The screenshot shows the American FactFinder website in a Netscape browser window. The browser title is "American FactFinder - Netscape". The address bar shows the URL: /factfinder.census.gov/servlet/DTSubjectShowTablesServlet?_lang=en&_ts=77566044289. The page header includes the U.S. Census Bureau logo and the American FactFinder logo. Navigation links include Main, Search, Feedback, FAQs, Glossary, and Help. The current data set is "Census 2000 Summary File 4 (SF 4) - Sample Data".

The main content area has a search section with radio buttons for "show all tables" (selected), "by subject", and "by keyword". Below this is a list of tables to select from:

- PCT54. Place of Work for Workers 16+ Years -- MCD Level for 12 Selected States (CT, ME, MA, MI, MN, NH, NJ, NY, PA, RI, VT, WI)
- PCT55. Means of Transportation to Work for Workers 16 Years and Over**
- PCT56. Travel Time to Work for Workers 16 Years and Over
- PCT57. Travel Time to Work by Means of Transportation to Work for Workers 16 Years and Over Who Did Not Work at Home
- PCT58. Aggregate Travel Time to Work by Means of Transportation to Work for Workers 16+ Years Who Did Not Work at Home
- PCT59. Time Leaving Home to go to Work for Workers 16 Years and Over

Buttons for "Add" and "Remove" are located below the list. The "Add" button has been clicked, and the selected table, "PCT55. Means of Transportation to Work for Workers 16 Years and Over", is now listed in a separate box below. The status bar at the bottom of the browser shows the JavaScript command: javascript:addMatrixTables('Select table(s) to add')

Step 11: View Table.

The screenshot shows a Netscape browser window titled "American FactFinder - Netscape". The address bar displays the URL: http://factfinder.census.gov/servlet/DTTable?_ts=77566413200. The page content includes the following text:

[PCT55. MEANS OF TRANSPORTATION TO WORK FOR WORKERS 16 YEARS AND OVER \[16\]-](#)
[Universe: Workers 16 years and over](#)
Data Set: [Census 2000 Summary File 4 \(SF 4\) - Sample Data](#)

NOTE: Data based on a sample. For information on confidentiality protection, sampling error, nonsampling error, and definitions see <http://factfinder.census.gov/home/en/datanotes/expst4.htm>.

	Census Tract 19.01, Honolulu County, Hawaii
Total:	266
Car, truck, or van:	154
Drove alone	113
Carpooled	41
Public transportation:	40
Bus or trolley bus	40
Streetcar or trolley car (publico in Puerto Rico)	0
Subway or elevated	0
Railroad	0
Ferryboat	0
Taxicab	0
Motorcycle	0
Bicycle	9
Walked	54
Other means	0
Worked at home	9

U.S. Census Bureau
Census 2000

Standard Error/Variance documentation for this dataset:

The browser's status bar at the bottom shows "Document: Done". The system tray on the right indicates the time is 7:13.