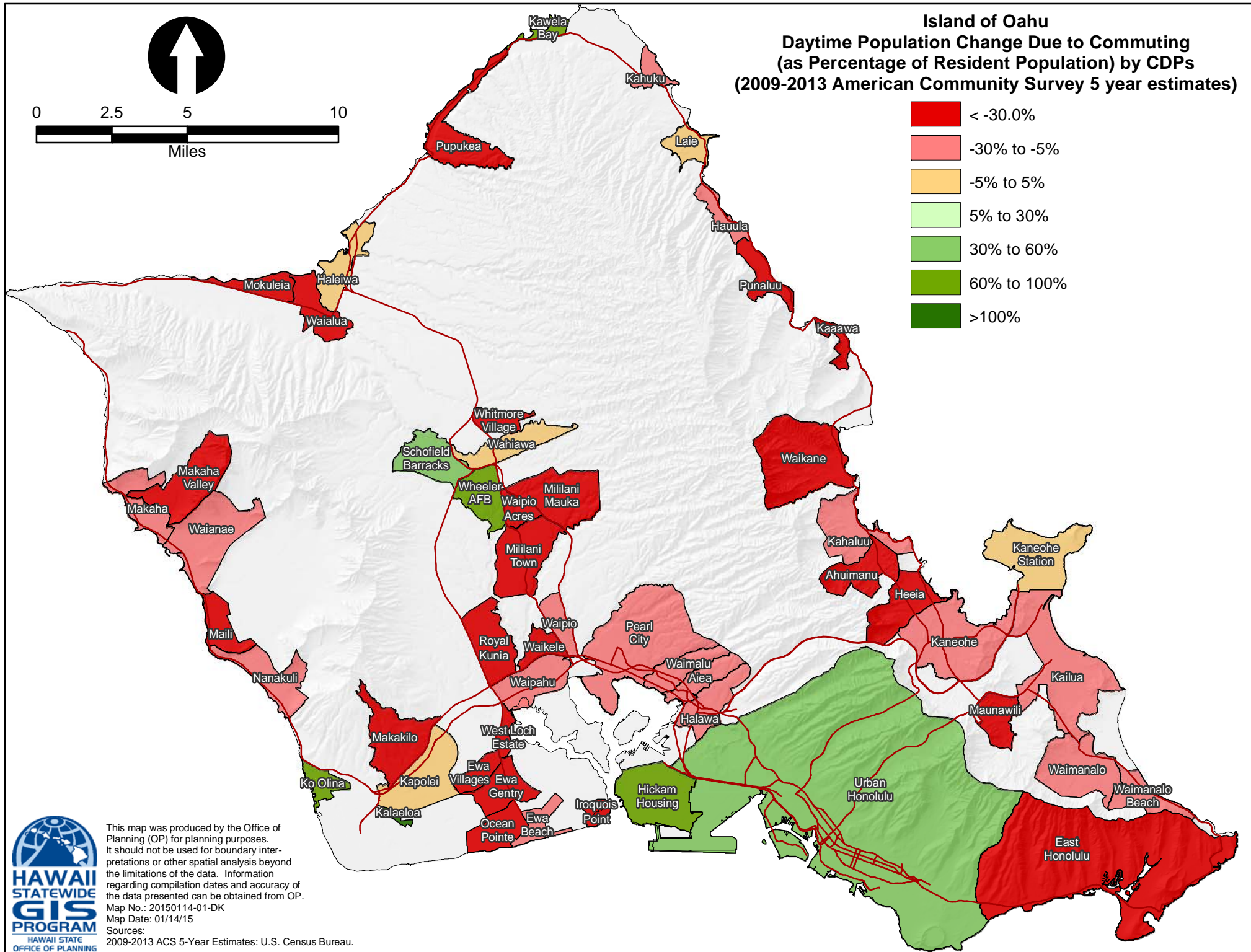
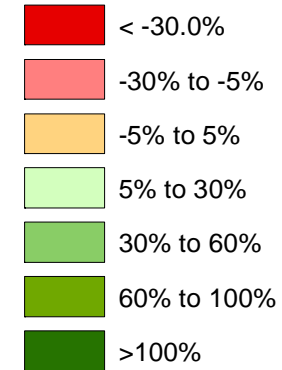
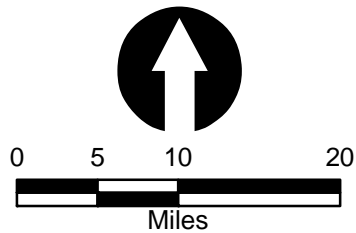


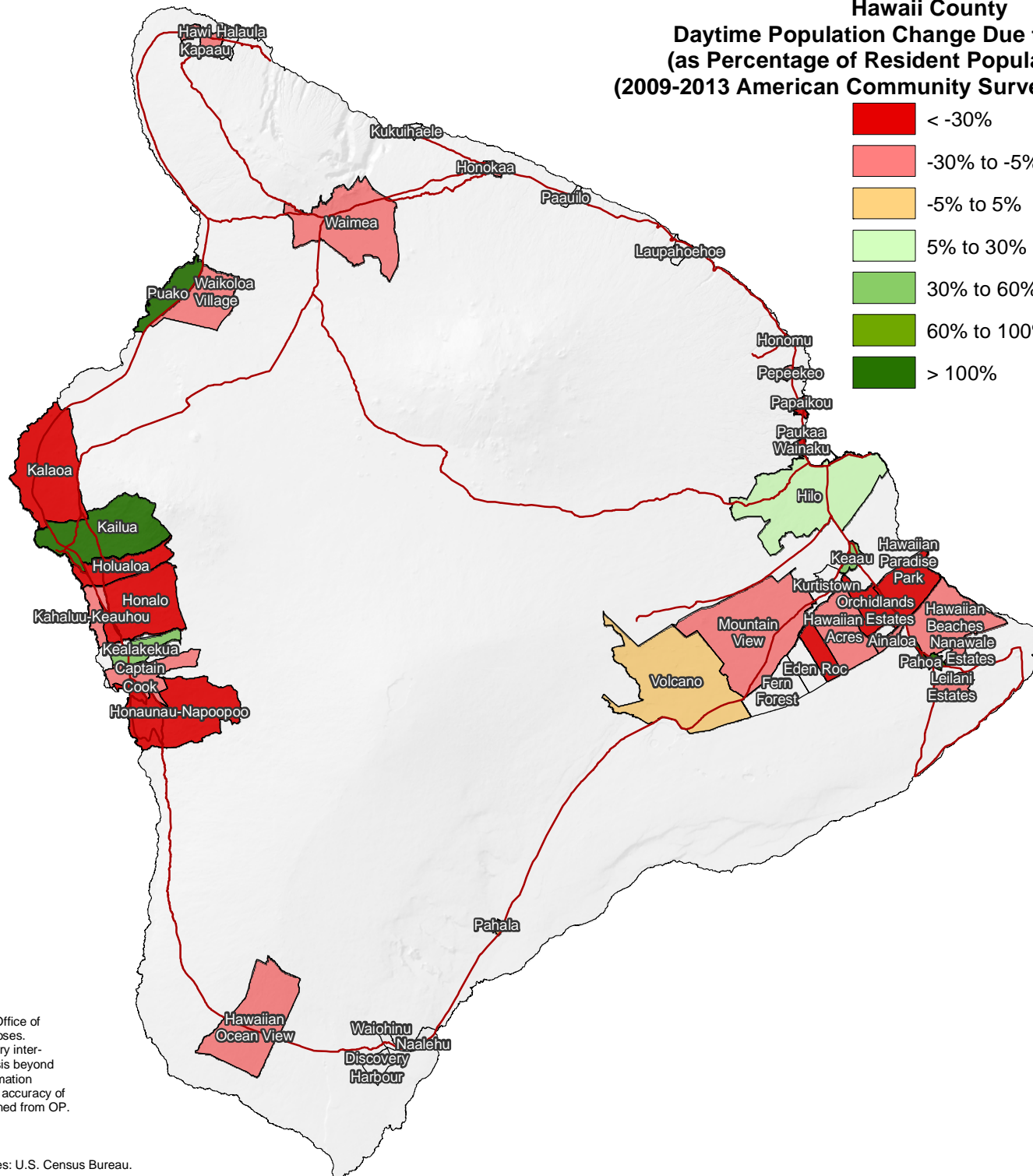
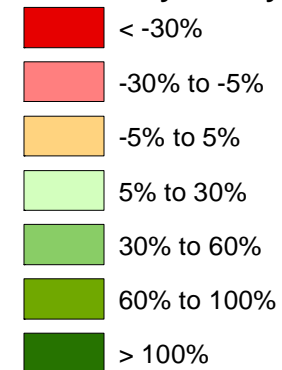
0 2.5 5 10
Miles

Island of Oahu
Daytime Population Change Due to Commuting
(as Percentage of Resident Population) by CDPs
(2009-2013 American Community Survey 5 year estimates)



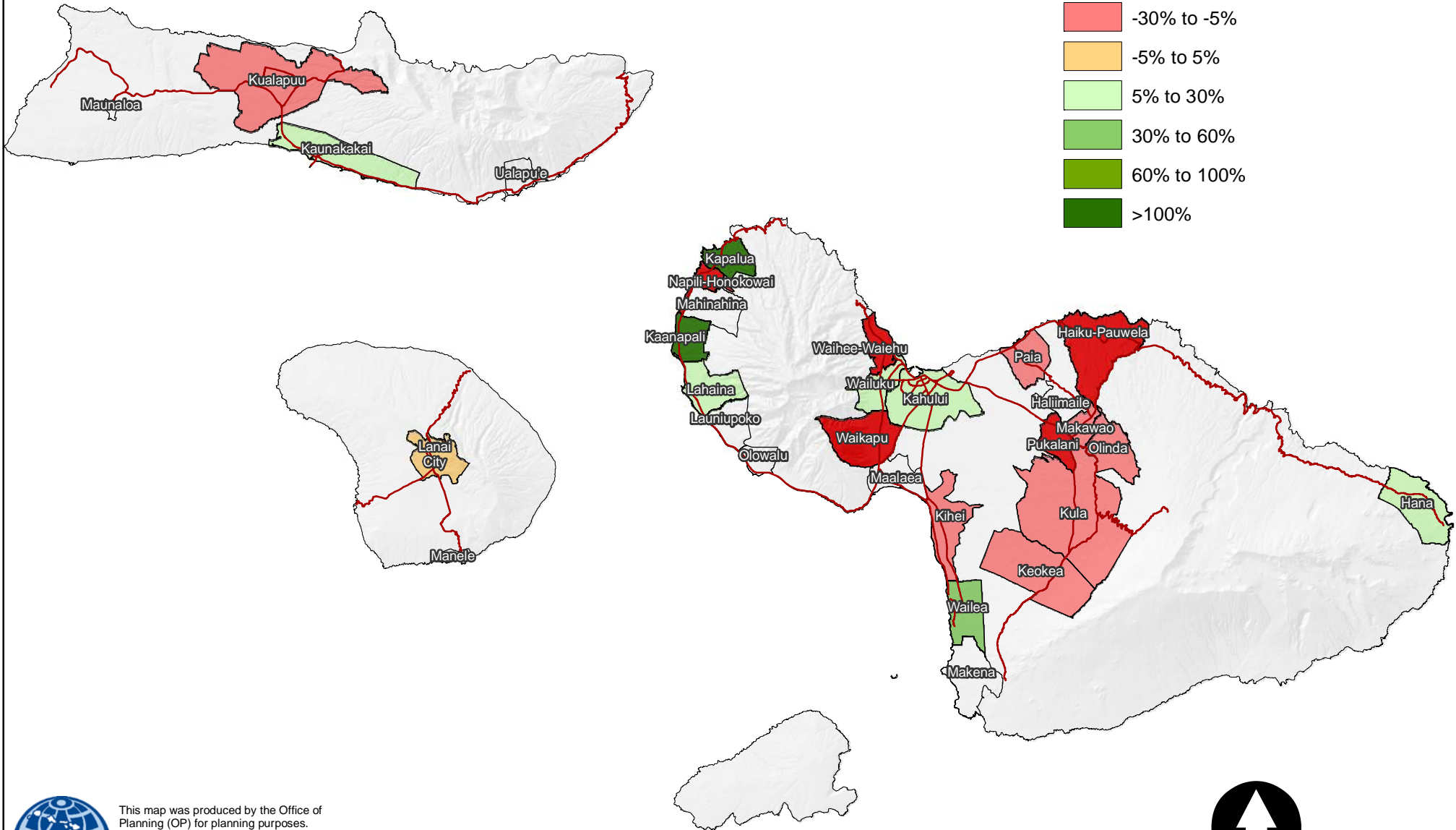
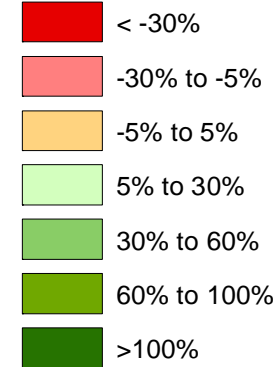


Hawaii County **Daytime Population Change Due to Commuting** **(as Percentage of Resident Population) by CDPs** **(2009-2013 American Community Survey 5 year estimates)**

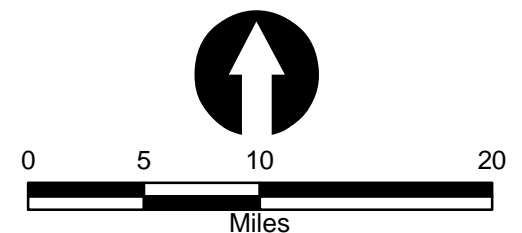


This map was produced by the Office of Planning (OP) for planning purposes. It should not be used for boundary interpretations or other spatial analysis beyond the limitations of the data. Information regarding compilation dates and accuracy of the data presented can be obtained from OP.
 Map No.: 20150114-04-DK
 Map Date: 01/14/15
 Sources:
 2009-2013 ACS 5-Year Estimates: U.S. Census Bureau.

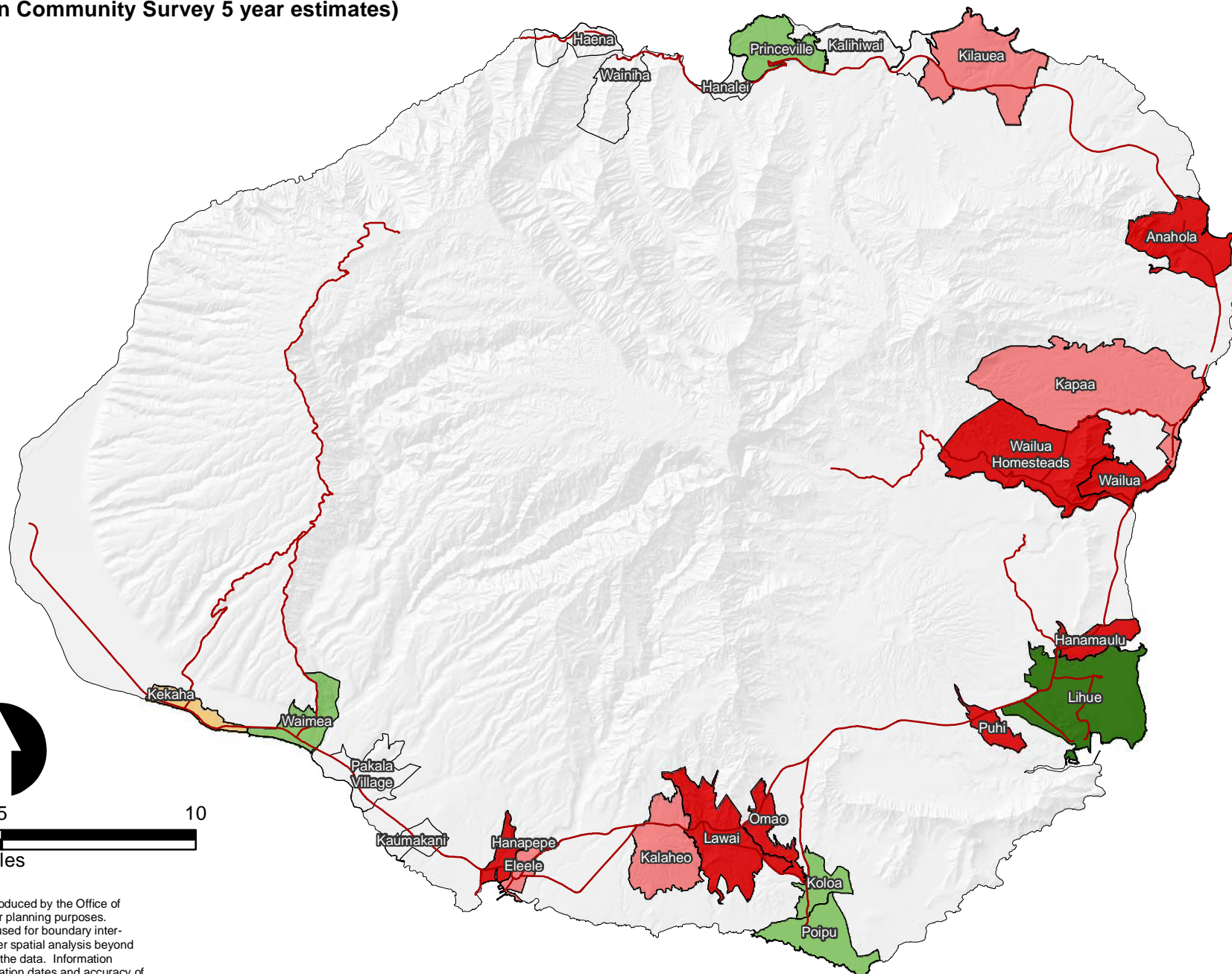
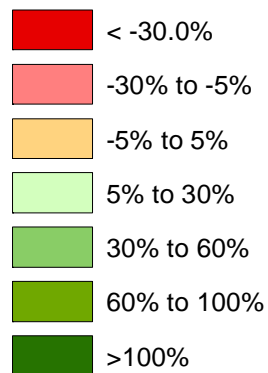
Maui County
Daytime Population Change Due to Commuting
(as Percentage of Resident Population) by CDPs
(2009-2013 American Community Survey 5 year estimates)



This map was produced by the Office of Planning (OP) for planning purposes. It should not be used for boundary interpretations or other spatial analysis beyond the limitations of the data. Information regarding compilation dates and accuracy of the data presented can be obtained from OP.
 Map No.: 20150114-07-DK
 Map Date: 01/14/15
 Sources:
 2009-2013 ACS 5-Year Estimates: U.S. Census Bureau.



Kauai County
Daytime Population Change Due to Commuting
(as Percentage of Resident Population) by CDPs
(2009-2013 American Community Survey 5 year estimates)



This map was produced by the Office of Planning (OP) for planning purposes. It should not be used for boundary interpretations or other spatial analysis beyond the limitations of the data. Information regarding compilation dates and accuracy of the data presented can be obtained from OP.
 Map No.: 20150114-10-DK
 Map Date: 01/14/15
 Sources:
 2009-2013 ACS 5-Year Estimates: U.S. Census Bureau.