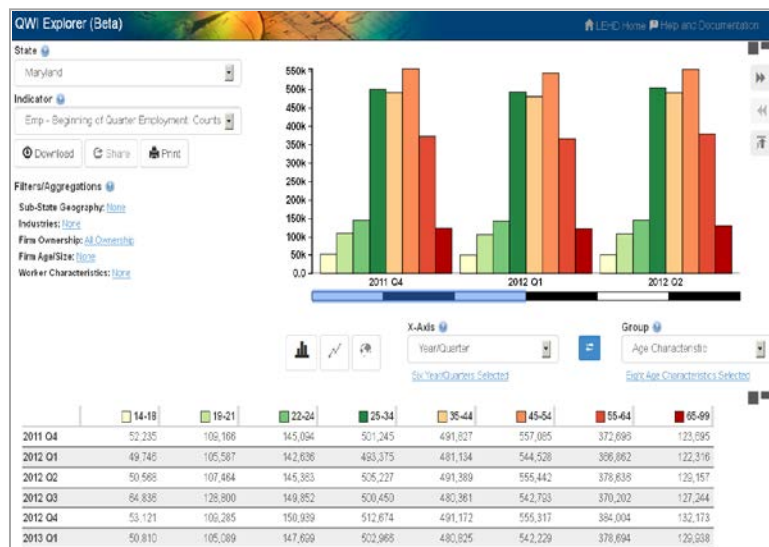


QWI Explorer

Local Employment Dynamics

[QWI Explorer](#) is a new, web-based analysis tool that enables comprehensive access to the full depth and breadth of the Quarterly Workforce Indicators (QWI) dataset. Through charts and interactive tables, users can compare, rank and aggregate QWIs across time, geography, and/or firm and worker characteristics on the fly.

The Beta release of QWI Explorer (<http://qwiexplorer.ces.census.gov>) makes the entire QWI dataset available in a simple chart/table interface. The application's intuitive dashboard allows for the construction of pivot tables to compare and rank labor-force indicators such as employment, job creation and destruction, wages, and hires across a wide range of firm and worker characteristics. Potential analyses include a longitudinal look at wages by worker sex and age across counties, ranking job creation rates of young firms across NAICS industry groups, and comparing hiring levels by worker race and education levels across a selection of Metropolitan Areas. The data exploration possibilities are endless!



Future updates will add line charts, thematic maps, improved exports, and many other interface design improvements.

QWI Explorer Highlights

- **Comprehensive Data Coverage** – Access all 32 indicators, all available years/quarters, all firm and worker characteristics, and 50 states (including DC, but not MA) worth of QWI data.
- **Flexible Table/Chart Interface** – Explore the many detailed interactions between firms and workers by building the exact table and chart required to analyze – and inspire subsequent – labor-force questions.
- **Interactive Visualizations and Comprehensive Outputs** – The synchronized chart and table interact to provide multiple visual perspectives on the data. Raw data tables are simple to export and download.
- **Easy-To-Use Documentation** – [Online documentation](#), including FAQs and walkthroughs, is available through the LEHD website.

Contact: CES.QWI.Feedback@census.gov