

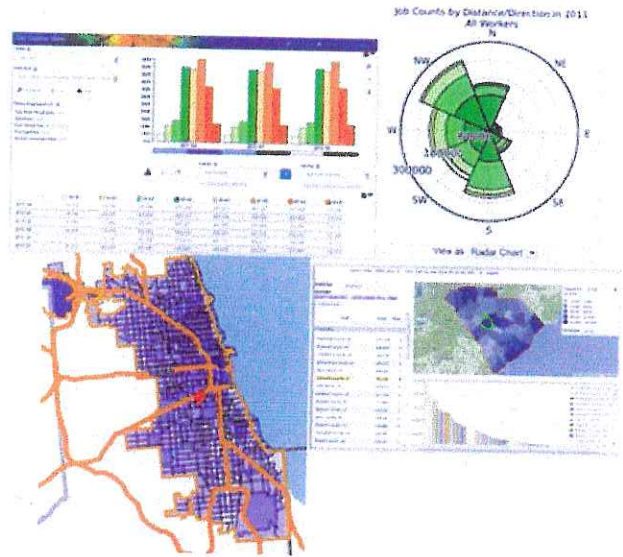
# LED **New Data from the States and the U.S. Census Bureau**

## Local Employment Dynamics

Data from the Local Employment Dynamics (LED) Partnership provide unprecedented details about America's jobs, workers, and local economies and communities. LED integrates existing data from state-supplied administrative records on workers and employers with existing censuses, surveys, and other administrative records to create a longitudinal data system on U.S. employment. State-of-the-art methods to protect the confidentiality of the original respondents allow LED to release data for local and regional areas beyond traditional boundaries for public use on the Internet.

The LED flagship product, Quarterly Workforce Indicators (QWI), provides information about trends in employment, hiring, job creation and destruction, and earnings, with unprecedented detail on geography, age, sex, and industry going as far back as 1990. A second data product, the LEHD Origin-Destination Employment Statistics (LODES), provides annual employment statistics linking home and work locations at the Census block-level.

LED is an integral part of the U.S. Department of Commerce Open Government Plan to unlock public access to high-value government data. As such, the QWI and LODES data products are released to the public via a wide variety of dissemination and analysis tools. The LODES dataset is highlighted in OnTheMap, a mapping and reporting tool showing employment and home locations of workers with companion reports for user-defined areas. OnTheMap has been selected as a representative U.S. statistical innovation for the United Nations in 2009, and received the U.S. Department of Commerce Gold Medal, its highest recognition for scientific achievement, in 2010. Our new analysis tool, QWI Explorer, provides comprehensive QWI access and analytical capabilities through flexible charts, tables and maps.



<a href="#">Online Tool</a>	Data Update/ Currency	Description
<a href="#">QWI Explorer</a>	Quarterly 1990-2014	A new, web-based analysis tool that enables comprehensive access to the full depth and breadth of the Quarterly Workforce Indicators (QWI) dataset, through charts, maps and interactive tables, users can compare, rank and aggregate QWIs across time, geography, and/or firm and worker characteristics.
<a href="#">OnTheMap</a>	Annually 2002-2011	Maps, charts, and reports on demographic characteristics and commute patterns of workers/jobs covering 50 states and territorial partners.
<a href="#">OnTheMap for Emergency Management</a>	Annually 2013	Shows potential impact on jobs/workers and population for hurricanes, tropical storms, fires, floods, snow and freezing rain probability and disaster declaration areas. Real-time geographic data of disaster events are automatically updated.
<a href="#">LED Extraction Tool</a>	Quarterly 1990-2014	Easy access to raw data extracts from the Quarterly Workforce Indicators (QWI) dataset through a simple query-building interface.

Go to [www.census.gov](http://www.census.gov), click on "Local Employment Dynamics" under "Topics, Employment" to visit. For more information, contact [CES.local.employment.dynamics@census.gov](mailto:CES.local.employment.dynamics@census.gov).