



Start typing to profile a place...

or Search for data

# Honolulu County, HI

County in: [Hawaii](#), [United States](#)

**991,788**

Population

600.6 square miles

1,651.3 people per square mile

Census data: ACS 2014 1-year unless noted

Northern Mariana Islands

Find data for this place

Search by table or column name...

Interact with charts and statistics for [margins of error](#) and additional information.

## Demographics

### Age

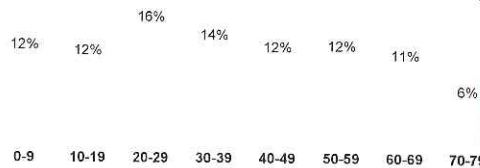
**36.7**

Median age

a little less than the figure in Hawaii: 38.1

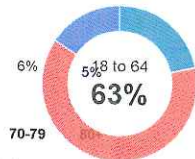
a little less than the figure in United States: 37.7

#### Population by age range



Show data / Embed

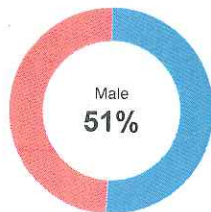
#### Population by age category



Show data / Embed

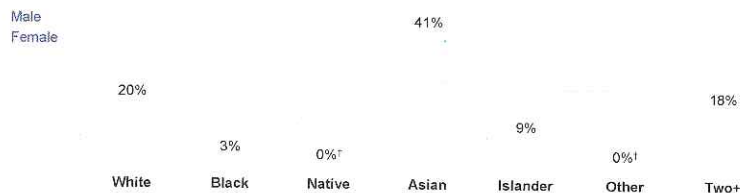
† Margin of error is at least 10 percent of the total value. Take care with this statistic.

### Sex



Show data / Embed

### Race & Ethnicity



\* Hispanic includes respondents of any race. Other categories are non-Hispanic.

Show data / Embed

## Economics

**Families**

**Households**

**309,002**

Number of households

Hawaii: 450,769

United States: 117,259,427

Persons per household

**3.1**

about the same as the figure in Hawaii:

3.1

about 20 percent higher than the

figure in United States: 2.7

Population by household type



Show data / Embed

† Margin of error is at least 10 percent of the total value. Take care with this statistic.

† Margin of error is at least 10 percent of the total value. Take care with this statistic.

**Poverty**

**9.7%**

Persons below poverty line

about 80 percent of the rate in Hawaii:

11.4%

about three-fifths of the rate in United

States: 15.5%

Means of transportation to work

63%

Mean travel time to work

**29.6 minutes**

a little higher than the figure in Hawaii:

27.9

about 10 percent higher than the

figure in United States: 26

Show data / Embed



WK

**\$30,744**

Per capita income

a little higher than the

amount in Hawaii: \$29,736

amount in United States:

\$28,889

**\$74,634**

Median household income

about 10 percent higher

than the amount in Hawaii:

\$69,592

about 1.4 times the amount

in United States: \$53,657

Household income

32%

33%

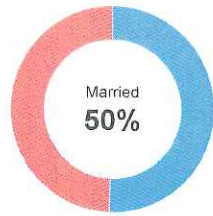
28%

Show data / Embed



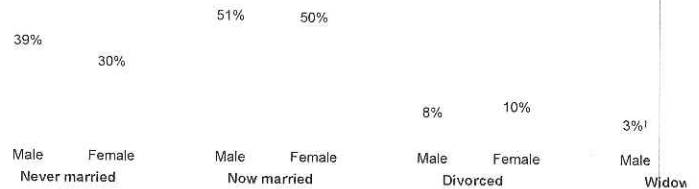
† Margin of error is at least 10 percent of the total value. Take care with this statistic.

**Marital status**



\* Universe: Population 15 years and over  
[Show data / Embed](#)

**Marital status, by sex**



[Show data / Embed](#)

† Margin of error is at least 10 percent of the total value. Take care with this statistic.

**Fertility**

**6.2%**

Women 15-50 who gave birth during past year

a little less than the rate in Hawaii: 6.4% †  
about 20 percent higher than the rate in United States: 5.2%

**Women who gave birth during past year, by age group**



\* Universe: Women 15 to 50 years

[Show data / Embed](#)

**Housing**

**Units & Occupancy**

**343,031**

Number of housing units

Hawaii: 530,118  
United States: 133,962,970

**Occupied vs. Vacant**



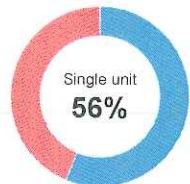
[Show data / Embed](#)

**Ownership of occupied units**



[Show data / Embed](#)

**Types of structure**



[Show data / Embed](#)

**Year moved in, by percentage of population**



[Show data / Embed](#)

**Value**

**\$590,600**

Median value of owner-occupied housing units

about 10 percent higher than the amount in Hawaii: \$528,000  
more than double the amount in United States: \$181,200

**Value of owner-occupied housing units**



[Show data / Embed](#)

† Margin of error is at least 10 percent of the total value. Take care with this statistic.

† Margin of error is at least 10 percent of the total value.  
 ‡ Take care with this statistic.

### 18.8%

#### Place of birth

Foreign-born population

a little higher than the rate in

Hawaii: 17.6%

about 1.4 times the rate in

United States: 13.3%

\* ACS 2014 5-year data

Show data / Embed



### 27.5%

#### Language

Persons with language other than English spoken at home

\* ACS 2014 5-year data

about 10 percent higher than the rate

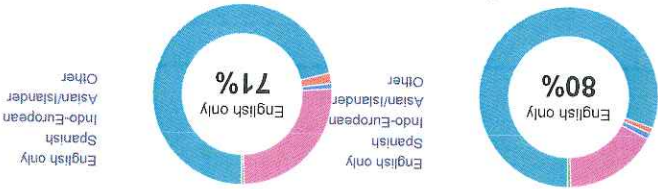
in Hawaii: 25.3%

about 1.3 times the rate in United

States: 20.9%

Show data / Embed

Show data / Embed



#### Educational attainment

### 91.8%

### 32.6%

High school grad or Bachelor's degree or higher

about the same as the rate in

Hawaii: 91.7%

a little higher than the rate in

United States: 86.9%

about 10 percent higher than the rate in United States:

30.1%

\* Universe: Population 25 years and over

Show data / Embed

No degree High school Some college Bachelor's Post-gr

11% 8% 22%

Population by minimum level of education

32% 27%

† Margin of error is at least 10 percent of the total value.  
 ‡ Take care with this statistic.

#### Geographical mobility

### 15.5%

Moved since previous year

about 10 percent higher than the rate

in Hawaii: 14.4%

a little higher than the rate in United

States: 14.9%

Show data / Embed

Same house year ago From same county From different county From different state From al

1% 5% 0% 10% 0%

Population migration since previous year

85%

† Margin of error is at least 10 percent of the total value. Take care with this statistic.

Veteran status

**11.2%**

Population with veteran status

about 10 percent higher than the rate in Hawaii: 10.3%

about 1.4 times the rate in United States: 7.9%

Veterans by wartime service

5,038†

5,687†

WWII

Korea

Vietnam

Gulf (1990s)

Gulf (2001-)

21,780

21,430

**82,571** Total veterans

**72,629** Male

**9,942** Female

\* Civilian veterans who served during wartime only

[Show data](#) / [Embed](#)

[Census terms & definitions](#)

[Census Reporter on GitHub](#)

[Help & feedback](#)

[@CensusReporter](#)

[Email us](#)

[Census Reporter blog](#)

