

# **2009 Employment and Payrolls in Hawaii**

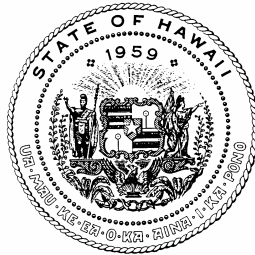


**October 2010**

2009

# Employment and Payrolls in Hawai`i

A Report on Covered Employment and Wages



**State of Hawaii**  
**Linda Lingle, Governor**

---

**Department of Labor and Industrial Relations**

Pearl Imada Iboshi, Director  
Colleen Y. LaClair, Deputy Director

**Research and Statistics Office**

Francisco P. Corpuz, Chief

**Labor Force Research Section**

Jeri N. Sato, Section Supervisor

Prepared by:

**Chona Sumulong**  
Research Statistician

In cooperation with:

**UNEMPLOYMENT INSURANCE DIVISION**

Linda Uesato, Administrator

Special thanks to:

**EMPLOYER SERVICES SECTION**

Tanya Lee & staff

October 2010

## Table of Contents

Introduction.....	1
State of Hawai`i Employment and Wages.....	2
Honolulu County Employment and Wages.....	8
Hawai`i County Employment and Wages.....	10
Maui County Employment and Wages.....	12
Kaua`i County Employment and Wages.....	14
Graph: <i>2009 Distribution of Statewide Average Employment</i> .....	16
1990-2009 Annual Average Employment by County.....	17
Graph: <i>2009 Distribution of County Average Employment</i> .....	18
Graph: <i>Percentage Growth 1980-2009, Private Sector Employment</i> .....	20
2001-2009 Statewide Annual Average Employment Comparison.....	21
Graph: <i>2008-2009 Statewide Average Employment by Industry</i> .....	24
1990-2009 Annual Average Wage by County.....	25
2001-200 Statewide Annual Average Wage Comparison.....	26
Graph: <i>2008-2009 Statewide Average Wage by Industry</i> .....	29
Reporting Units and Employment by Size of Firm.....	30
Employers and Employment by Size of Employer.....	32
Graph: <i>Distribution of Employment by Size of Employer by County</i> .....	34
Graph: <i>Distribution of Employment by Size of Employer by Industry</i> .....	35
NAICS Sector & Descriptions.....	36
Technical Notes.....	38

## Introduction

The 2009 Employment and Payrolls in Hawai'i is the third annual report that provides tabulations of the number of reporting units, monthly employment, average annual employment, total wages, and average annual wage for the State of Hawai'i, as reported under Hawai'i Employment Security Law, based on the North American Industry Classification System 2007 (NAICS). This report has been streamlined to correspond with the quarterly published tables. Previous reports in this series on covered employment and wage data since 2001 were tabulated based on the North American Industry Classification System 2002 (NAICS). Prior to 2001, data were tabulated based on the Standard Industrial Classification (SIC) industry coding system. NAICS 2007 includes revisions to NAICS 2002 across several sectors. The most significant revisions are in the Information Sector, particularly within the Telecommunications area. [See NAICS Sectors and Description and Technical Notes]

Sections of this report such as the summary tables for statewide and counties are available for immediate downloading through our Hawaii Workforce Informer (HIWI) website. Other employment data such as the monthly Local Area Unemployment Statistics and the Current Employment Statistics are also available. Visit our home page at URL:

<http://www.hiwi.org>

Any suggestions and/or comments are welcome. Please direct inquiries to:

State of Hawai'i  
Department of Labor and Industrial Relations  
Research & Statistics Office, QCEW  
P.O. Box 3680  
Honolulu, HI 96811-3680

Telephone: (808) 586-9033  
Facsimile: (808) 586-9031  
E-Mail: [DLIR.RS.LFR@hawaii.gov](mailto:DLIR.RS.LFR@hawaii.gov)

## STATE OF HAWAII

EMPLOYMENT AND WAGES OF WORKERS COVERED BY HAWAII EMPLOYMENT SECURITY LAW  
AND UNEMPLOYMENT COMPENSATION FOR FEDERAL EMPLOYEES  
CLASSIFIED BY INDUSTRY FOR CALENDAR YEAR 2009

Industry	No. of Rep. Units December	Average Employment	Total Wages	Average Annual Wage
TOTAL, including government	37,546	592,189	24,473,876,038	41,328
TOTAL GOVERNMENT	6	122,454	6,231,282,385	50,887
Federal	1	33,325	2,117,527,362	63,542
State	1	70,466	3,104,526,022	44,057
County	4	18,663	1,009,229,001	54,076
Total, excluding government	37,540	469,735	18,242,593,653	38,836
Goods Producing	5,077	51,513	2,706,446,036	52,539
11 Agriculture, forestry, fishing and hunting	452	6,439	200,482,268	31,136
111 Crop production	265	5,191	160,283,931	30,877
112 Animal production	75	587	22,532,632	38,386
113 Forestry and logging	5	24	818,455	34,102
114 Fishing, hunting and trapping	75	146	4,606,145	31,549
115 Agriculture and forestry support activities	32	492	12,241,105	24,880
21 Mining	31	340	26,467,446	77,845
211 Oil and gas extraction	*	*	*	*
212 Mining, except oil and gas	10	332	25,896,258	78,001
213 Support activities for mining	*	*	*	*
23 Construction	3,582	31,035	1,947,299,175	62,745
236 Construction of buildings	1,191	9,364	614,476,416	65,621
237 Heavy and civil engineering construction	263	4,239	328,218,100	77,428
238 Specialty trade contractors	2,128	17,432	1,004,604,659	57,630
31-33 Manufacturing	1,012	13,699	532,197,147	38,849
311 Food manufacturing	301	5,825	162,876,935	27,962
312 Beverage and tobacco product manufacturing	33	882	39,350,583	44,615
313 Textile mills	*	*	*	*
314 Textile product mills	26	205	6,168,397	30,090
315 Apparel manufacturing	62	468	10,357,637	22,132
316 Leather and allied product manufacturing	*	*	*	*
321 Wood product manufacturing	*	*	*	*
322 Paper manufacturing	6	88	3,510,827	39,896
323 Printing and related support activities	114	907	31,275,945	34,483
324 Petroleum and coal products manufacturing	6	510	53,887,076	105,661
325 Chemical manufacturing	35	353	15,106,597	42,795
326 Plastics and rubber products manufacturing	17	231	9,710,917	42,039
327 Nonmetallic mineral product manufacturing	64	854	48,358,179	56,626
331 Primary metal manufacturing	*	*	*	*
332 Fabricated metal product manufacturing	*	*	*	*
333 Machinery manufacturing	6	49	2,227,024	45,449
334 Computer and electronic product manufacturing	12	172	10,331,417	60,066
335 Electrical equipment and appliance mfg.	3	22	1,088,075	49,458
336 Transportation equipment manufacturing	31	933	54,804,241	58,740
337 Furniture and related product manufacturing	69	457	19,463,151	42,589
339 Miscellaneous manufacturing	145	975	32,804,039	33,645

## STATE OF HAWAII

Industry	No. of Rep. Units December	Average Employment	Total Wages	Average Annual Wage
Service Providing	32,463	418,221	15,536,147,617	37,148
22 Utilities	72	3,190	256,368,785	80,366
221 Utilities	72	3,190	256,368,785	80,366
42 Wholesale trade	2,190	17,815	858,099,372	48,167
423 Merchant wholesalers, durable goods	823	6,399	326,986,861	51,100
424 Merchant wholesalers, nondurable goods	741	9,597	398,023,196	41,474
425 Electronic markets and agents and brokers	626	1,819	133,089,315	73,166
44-45 Retail trade	4,583	66,497	1,820,747,564	27,381
441 Motor vehicle and parts dealers	320	6,010	258,159,842	42,955
442 Furniture and home furnishings stores	187	1,456	47,896,309	32,896
443 Electronics and appliance stores	129	1,257	45,623,989	36,296
444 Building material and garden supply stores	244	4,212	141,020,937	33,481
445 Food and beverage stores	648	13,625	342,430,599	25,133
446 Health and personal care stores	400	4,682	158,873,990	33,933
447 Gasoline stations	220	2,469	57,168,835	23,155
448 Clothing and clothing accessories stores	1,145	10,195	222,184,521	21,793
451 Sporting goods, hobby, book and music stores	324	3,215	63,634,983	19,793
452 General merchandise stores	136	13,778	341,469,602	24,784
453 Miscellaneous store retailers	724	5,293	131,347,321	24,815
454 Nonstore retailers	106	307	10,936,636	35,624
48-49 Transportation and warehousing	1,025	23,546	948,148,850	40,268
481 Air transportation	74	7,106	322,605,737	45,399
483 Water transportation	24	1,838	103,505,728	56,314
484 Truck transportation	244	3,023	116,602,174	38,572
485 Transit and ground passenger transportation	135	2,250	45,924,258	20,411
487 Scenic and sightseeing transportation	210	3,348	95,188,186	28,431
488 Support activities for transportation	222	3,920	180,336,336	46,004
491 Postal service	6	20	352,663	17,633
492 Couriers and messengers	63	1,404	54,744,991	38,992
493 Warehousing and storage	47	637	28,888,777	45,351
51 Information	686	9,067	507,021,695	55,919
511 Publishing industries, except Internet	143	2,063	105,797,463	51,283
512 Motion picture and sound recording industries	187	1,443	46,942,941	32,531
515 Broadcasting, except Internet	56	1,151	57,776,141	50,196
517 Telecommunications	187	3,816	261,077,540	68,417
518 ISPs, search portals, and data processing	80	397	24,650,033	62,091
519 Other information services	33	198	10,777,577	54,432
52 Finance and insurance	1,710	16,246	920,670,236	56,671
522 Credit intermediation and related activities	779	8,324	422,424,065	50,748
523 Securities, commodity contracts, investments	311	1,118	94,907,596	84,891
524 Insurance carriers and related activities	596	6,768	401,519,322	59,326
525 Funds, trusts, and other financial vehicles	24	36	1,819,253	50,535
53 Real estate and rental and leasing	1,899	11,408	459,153,502	40,248
531 Real estate	1,528	7,415	334,119,073	45,060
532 Rental and leasing services	363	3,978	124,494,879	31,296
533 Lessors of nonfinancial intangible assets	8	14	539,550	38,539
54 Professional and technical services	4,240	24,643	1,539,958,419	62,491
541 Professional and technical services	4,240	24,643	1,539,958,419	62,491
55 Management of companies and enterprises	426	6,989	497,619,673	71,200
551 Management of companies and enterprises	426	6,989	497,619,673	71,200

STATE OF HAWAII

Industry	No. of Rep. Units December	Average Employment	Total Wages	Average Annual Wage
56 Administrative and waste services	2,359	39,913	1,207,594,758	30,256
561 Administrative and support services	2,222	38,218	1,123,870,020	29,407
562 Waste management and remediation services	137	1,695	83,724,738	49,395
61 Educational services	713	13,750	488,128,364	35,500
611 Educational services	713	13,750	488,128,364	35,500
62 Health care and social assistance	3,610	59,683	2,734,897,906	45,824
621 Ambulatory health care services	2,682	23,484	1,270,589,324	54,104
622 Hospitals	22	14,231	878,159,292	61,707
623 Nursing and residential care facilities	159	7,127	236,107,678	33,129
624 Social assistance	747	14,842	350,041,612	23,585
71 Arts, entertainment, and recreation	579	10,698	281,138,718	26,280
711 Performing arts and spectator sports	216	1,492	57,798,827	38,739
712 Museums, historical sites, zoos, and parks	53	1,301	36,411,183	27,987
713 Amusements, gambling, and recreation	310	7,904	186,928,708	23,650
72 Accommodation and food services	3,645	90,133	2,281,238,442	25,310
721 Accommodation	411	34,789	1,291,839,984	37,134
722 Food services and drinking places	3,234	55,344	989,398,458	17,877
81 Other services, except public administration	3,798	24,219	714,451,456	29,500
811 Repair and maintenance	833	3,805	149,428,371	39,272
812 Personal and laundry services	741	7,318	157,002,902	21,454
813 Membership associations and organizations	1,974	12,584	389,270,977	30,934
814 Private households	250	513	18,749,206	36,548
99 Unclassified	928	426	20,909,877	49,084
999 Unclassified	928	426	20,909,877	49,084

\* Data suppressed due to confidentiality.

Note: Nonprofit employers and employers with zero employment are included in the data above.

State government employment figures differ from the state workforce count produced by the Department of Human Resources Development, which reports civil service and exempt employment as of the end of each calendar quarter and only includes the executive branch.

## STATE OF HAWAII

(Continued)

Industry	Jan	Feb	Mar	Apr	May	Jun	Jul	Aug	Sep	Oct	Nov	Dec
TOTAL, including government	598,234	600,145	600,398	594,666	594,927	595,150	584,743	582,534	586,278	587,476	588,653	593,060
TOTAL GOVERNMENT	121,699	123,988	125,206	125,186	126,301	124,692	117,918	116,493	120,070	122,005	122,532	123,359
Federal	32,701	32,606	32,652	33,505	33,155	33,138	33,432	33,296	33,256	33,825	34,129	34,203
State	70,387	72,945	74,096	73,088	74,686	72,704	65,150	64,207	68,025	69,692	69,889	70,723
County	18,611	18,437	18,458	18,593	18,460	18,850	19,336	18,990	18,789	18,488	18,514	18,433
Total, excluding government	476,535	476,157	475,192	469,480	468,626	470,458	466,825	466,041	466,208	465,471	466,121	469,701
Goods Producing	60,928	61,129	60,977	60,260	59,903	60,080	59,851	59,458	59,034	58,108	57,392	56,820
11 Agriculture, forestry, fishing and hunting	6,596	6,508	6,392	6,367	6,274	6,280	6,435	6,373	6,529	6,514	6,448	6,556
111 Crop production	5,316	5,247	5,115	5,117	5,060	5,033	5,198	5,139	5,262	5,285	5,226	5,295
112 Animal production	581	598	609	601	600	583	574	566	579	579	580	591
113 Forestry and logging	23	21	22	27	26	26	26	26	26	25	25	20
114 Fishing, hunting and trapping	144	149	155	140	144	144	151	152	150	134	126	158
115 Agriculture and forestry support activities	532	493	491	482	444	494	486	490	512	491	491	492
21 Mining	330	328	325	321	341	337	352	355	350	345	347	347
211 Oil and gas extraction	*	*	*	*	*	*	*	*	*	*	*	*
212 Mining, except oil and gas	326	324	321	314	324	333	338	334	338	342	342	342
213 Support activities for mining	*	*	*	*	*	*	*	*	*	*	*	*
23 Construction	33,637	32,947	32,447	31,488	31,301	31,346	31,015	30,291	29,986	29,626	29,239	29,098
236 Construction of buildings	10,059	9,841	9,614	9,247	9,248	9,417	9,456	9,302	9,202	9,071	9,002	8,914
237 Heavy and civil engineering construction	4,460	4,411	4,401	4,261	4,218	4,213	4,256	4,184	4,158	4,131	4,103	4,074
238 Specialty trade contractors	19,118	18,695	18,432	17,980	17,835	17,716	17,303	16,805	16,626	16,424	16,134	16,110
31-33 Manufacturing	14,070	13,963	13,932	13,723	13,673	13,663	13,496	13,612	13,651	13,506	13,540	13,560
311 Food manufacturing	5,856	5,841	5,808	5,752	5,766	5,787	5,723	5,842	5,895	5,880	5,894	5,855
312 Beverage and tobacco product manufacturing	868	888	897	867	877	868	875	877	884	896	897	888
313 Textile mills	*	*	*	*	*	*	*	*	*	*	*	*
314 Textile product mills	225	222	219	213	207	213	204	205	200	183	187	185
315 Apparel manufacturing	469	465	461	482	470	473	477	477	464	468	454	456
316 Leather and allied product manufacturing	*	*	*	*	*	*	*	*	*	*	*	*
321 Wood product manufacturing	*	*	*	*	*	*	*	*	*	*	*	*
322 Paper manufacturing	92	91	93	88	89	87	87	86	86	85	85	87
323 Printing and related support activities	987	949	949	921	921	915	893	883	883	864	852	864
324 Petroleum and coal products manufacturing	513	516	514	513	504	506	515	513	509	507	504	505
325 Chemical manufacturing	357	356	370	360	354	356	337	338	352	346	356	354
326 Plastics and rubber products manufacturing	253	241	233	234	231	236	227	228	226	224	223	221
327 Nonmetallic mineral product manufacturing	969	949	926	872	842	829	835	823	817	793	803	795
331 Primary metal manufacturing	*	*	*	*	*	*	*	*	*	*	*	*
332 Fabricated metal product manufacturing	*	*	*	*	*	*	*	*	*	*	*	*
333 Machinery manufacturing	49	49	51	45	44	48	49	49	49	48	51	54
334 Computer and electronic product manufacturing	167	176	183	168	168	171	172	173	173	168	173	169
335 Electrical equipment and appliance mfg.	*	*	*	*	*	*	*	*	*	*	*	*
336 Transportation equipment manufacturing	938	936	954	941	947	936	940	939	936	881	918	928



## STATE OF HAWAII

(Continued)

Industry	Jan	Feb	Mar	Apr	May	Jun	Jul	Aug	Sep	Oct	Nov	Dec
337 Furniture and related product manufacturing	518	496	485	482	475	455	428	426	411	429	419	457
339 Miscellaneous manufacturing	986	967	967	978	978	986	962	976	977	971	969	985
Service Providing	442,563	444,604	445,801	442,427	442,851	442,487	438,881	437,925	434,844	430,221	431,352	433,301
22 Utilities	3,130	3,166	3,172	3,179	3,180	3,227	3,219	3,192	3,190	3,203	3,205	3,221
221 Utilities	3,130	3,166	3,172	3,179	3,180	3,227	3,219	3,192	3,190	3,203	3,205	3,221
42 Wholesale trade	18,270	18,094	17,990	17,896	17,812	17,753	17,737	17,673	17,695	17,618	17,592	17,644
423 Merchant wholesalers, durable goods	6,689	6,594	6,516	6,527	6,457	6,382	6,340	6,266	6,257	6,276	6,215	6,266
424 Merchant wholesalers, nondurable goods	9,760	9,678	9,646	9,583	9,551	9,585	9,577	9,583	9,626	9,508	9,540	9,530
425 Electronic markets and agents and brokers	1,821	1,822	1,828	1,786	1,804	1,786	1,820	1,824	1,812	1,834	1,837	1,848
44-45 Retail trade	67,938	67,073	66,566	65,608	65,344	65,814	65,772	65,581	65,960	66,037	67,538	68,733
441 Motor vehicle and parts dealers	6,171	6,090	6,085	6,033	6,032	5,969	5,960	5,943	6,005	5,961	5,913	5,952
442 Furniture and home furnishings stores	1,555	1,520	1,494	1,463	1,443	1,423	1,425	1,393	1,387	1,435	1,452	1,486
443 Electronics and appliance stores	1,390	1,330	1,248	1,217	1,194	1,188	1,175	1,210	1,221	1,240	1,312	1,355
444 Building material and garden supply stores	4,374	4,346	4,311	4,222	4,195	4,155	4,125	4,133	4,129	4,125	4,179	4,245
445 Food and beverage stores	13,789	13,785	13,692	13,605	13,565	13,734	13,591	13,555	13,633	13,458	13,490	13,598
446 Health and personal care stores	4,566	4,685	4,581	4,581	4,597	4,724	4,692	4,729	4,724	4,729	4,773	4,801
447 Gasoline stations	2,497	2,499	2,474	2,448	2,480	2,466	2,471	2,467	2,488	2,438	2,449	2,448
448 Clothing and clothing accessories stores	10,632	10,343	10,219	9,847	9,763	9,915	9,898	9,828	10,012	10,168	10,640	11,077
451 Sporting goods, hobby, book and music stores	3,394	3,240	3,194	3,115	3,092	3,147	3,107	3,165	3,166	3,172	3,358	3,430
452 General merchandise stores	13,908	13,569	13,666	13,485	13,402	13,503	13,725	13,561	13,639	13,769	14,421	14,692
453 Miscellaneous store retailers	5,365	5,366	5,307	5,308	5,292	5,292	5,301	5,292	5,230	5,214	5,233	5,312
454 Nonstore retailers	297	300	295	284	289	298	302	305	326	328	318	337
48-49 Transportation and warehousing	24,165	24,019	23,911	23,617	23,683	23,684	23,477	23,428	23,237	23,091	23,003	23,232
481 Air transportation	7,238	7,195	7,177	7,129	7,148	7,123	7,091	7,089	7,064	7,038	6,980	6,998
483 Water transportation	1,983	1,956	1,985	1,812	1,828	1,825	1,783	1,746	1,789	1,793	1,758	1,799
484 Truck transportation	3,117	3,042	3,014	3,001	3,036	3,064	3,067	3,025	2,996	2,963	2,966	2,988
485 Transit and ground passenger transportation	2,285	2,286	2,264	2,291	2,296	2,218	2,154	2,263	2,236	2,238	2,251	2,221
487 Scenic and sightseeing transportation	3,349	3,316	3,311	3,332	3,332	3,373	3,521	3,448	3,305	3,332	3,282	3,277
488 Support activities for transportation	3,979	4,035	4,044	4,040	4,032	4,084	3,878	3,885	3,858	3,751	3,738	3,712
491 Postal service	21	21	21	23	21	21	22	17	18	17	17	16
492 Couriers and messengers	1,474	1,479	1,449	1,360	1,349	1,351	1,350	1,356	1,349	1,340	1,393	1,598
493 Warehousing and storage	719	689	646	629	641	625	611	599	622	619	618	623
51 Information	9,071	9,606	9,352	9,406	9,036	9,085	8,631	8,778	8,924	9,115	8,883	8,915
511 Publishing industries, except Internet	2,173	2,200	2,168	2,096	2,068	2,062	2,017	2,005	2,025	1,978	1,980	1,979
512 Motion picture and sound recording industries	1,240	1,744	1,578	1,609	1,421	1,476	1,092	1,257	1,395	1,598	1,418	1,489
515 Broadcasting, except Internet	1,198	1,198	1,182	1,172	1,156	1,154	1,133	1,142	1,152	1,169	1,093	1,066
517 Telecommunications	3,853	3,850	3,814	3,943	3,806	3,814	3,808	3,800	3,777	3,772	3,781	3,773
518 ISPs, search portals, and data processing	395	400	398	387	389	388	399	384	389	402	416	411
519 Other information services	212	214	212	199	196	191	182	190	186	196	195	197
52 Finance and insurance	16,419	16,453	16,464	16,405	16,339	16,326	16,227	16,137	16,148	15,990	15,985	16,059
522 Credit intermediation and related activities	8,478	8,487	8,506	8,462	8,380	8,383	8,324	8,253	8,242	8,129	8,112	8,135
523 Securities, commodity contracts, investments	1,092	1,115	1,094	1,135	1,120	1,096	1,107	1,140	1,115	1,123	1,131	1,142

## STATE OF HAWAII

(Continued)

Industry	Jan	Feb	Mar	Apr	May	Jun	Jul	Aug	Sep	Oct	Nov	Dec
524 Insurance carriers and related activities	6,813	6,818	6,830	6,775	6,807	6,815	6,761	6,710	6,756	6,694	6,699	6,740
525 Funds, trusts, and other financial vehicles	36	33	34	33	32	32	35	34	35	44	43	42
53 Real estate and rental and leasing	11,424	11,366	11,247	11,383	11,470	11,487	11,360	11,430	11,369	11,467	11,409	11,478
531 Real estate	7,608	7,543	7,487	7,378	7,402	7,431	7,306	7,337	7,323	7,367	7,359	7,435
532 Rental and leasing services	3,804	3,809	3,748	3,992	4,054	4,042	4,039	4,078	4,031	4,084	4,033	4,027
533 Lessors of nonfinancial intangible assets	12	14	12	13	14	14	15	15	15	16	17	16
54 Professional and technical services	25,380	25,440	25,291	25,010	24,335	24,473	24,311	24,269	24,006	24,161	24,267	24,768
541 Professional and technical services	25,380	25,440	25,291	25,010	24,335	24,473	24,311	24,269	24,006	24,161	24,267	24,768
55 Management of companies and enterprises	7,307	7,278	7,273	7,020	6,919	6,935	6,911	6,933	6,839	6,789	6,823	6,838
551 Management of companies and enterprises	7,307	7,278	7,273	7,020	6,919	6,935	6,911	6,933	6,839	6,789	6,823	6,838
56 Administrative and waste services	40,360	40,194	40,316	39,540	39,768	39,783	39,400	39,430	39,441	40,407	39,951	40,366
561 Administrative and support services	38,767	38,615	38,729	37,846	38,060	38,059	37,614	37,693	37,692	38,676	38,214	38,648
562 Waste management and remediation services	1,593	1,579	1,587	1,694	1,708	1,724	1,786	1,737	1,749	1,731	1,737	1,718
61 Educational services	13,409	13,923	14,006	13,900	14,132	14,025	13,432	13,244	13,663	13,625	13,785	13,856
611 Educational services	13,409	13,923	14,006	13,900	14,132	14,025	13,432	13,244	13,663	13,625	13,785	13,856
62 Health care and social assistance	59,211	59,519	59,694	59,288	59,499	60,265	59,703	59,511	59,727	59,667	59,828	60,289
621 Ambulatory health care services	23,428	23,511	23,588	23,315	23,337	23,422	23,345	23,441	23,541	23,529	23,572	23,776
622 Hospitals	14,125	14,159	14,172	14,178	14,221	14,190	14,304	14,294	14,283	14,282	14,302	14,267
623 Nursing and residential care facilities	7,119	7,177	7,187	7,101	7,098	7,129	7,052	7,088	7,079	7,132	7,153	7,206
624 Social assistance	14,539	14,672	14,747	14,694	14,843	15,524	15,002	14,688	14,824	14,724	14,801	15,040
71 Arts, entertainment, and recreation	10,814	10,674	10,785	10,580	10,645	10,878	10,691	10,852	10,725	10,713	10,551	10,463
711 Performing arts and spectator sports	1,558	1,503	1,593	1,494	1,504	1,473	1,333	1,553	1,524	1,545	1,433	1,395
712 Museums, historical sites, zoos, and parks	1,314	1,373	1,344	1,337	1,287	1,274	1,297	1,248	1,275	1,277	1,278	1,306
713 Amusements, gambling, and recreation	7,942	7,798	7,848	7,749	7,854	8,131	8,061	8,051	7,926	7,891	7,840	7,762
72 Accommodation and food services	90,503	90,853	91,107	90,339	90,419	90,580	90,243	90,382	89,954	88,797	88,922	89,494
721 Accommodation	35,883	35,659	35,502	34,937	34,709	34,789	34,715	34,513	34,284	34,040	34,244	34,187
722 Food services and drinking places	54,620	55,194	55,605	55,402	55,710	55,791	55,528	55,869	55,670	54,757	54,678	55,307
81 Other services, except public administration	24,096	24,332	24,457	24,101	24,138	24,182	24,002	24,151	24,370	24,315	24,276	24,212
811 Repair and maintenance	4,045	4,018	4,027	3,844	3,782	3,766	3,724	3,676	3,696	3,712	3,680	3,692
812 Personal and laundry services	7,228	7,235	7,197	7,159	7,182	7,198	7,425	7,502	7,395	7,445	7,396	7,449
813 Membership associations and organizations	12,322	12,566	12,716	12,577	12,649	12,683	12,345	12,470	12,766	12,658	12,692	12,559
814 Private households	501	513	517	521	525	535	508	503	513	500	508	512
99 Unclassified	405	421	465	309	318	335	411	419	444	485	529	572
999 Unclassified	405	421	465	309	318	335	411	419	444	485	529	572

\* Data suppressed due to confidentiality.

HONOLULU

EMPLOYMENT AND WAGES OF WORKERS COVERED BY HAWAII EMPLOYMENT SECURITY LAW  
AND UNEMPLOYMENT COMPENSATION FOR FEDERAL EMPLOYEES  
CLASSIFIED BY INDUSTRY FOR CALENDAR YEAR 2009

Industry	No. of Rep. Units December	Average Employment	Total Wages	Average Annual Wage
TOTAL, including government	25,459	434,079	18,595,081,278	42,838
TOTAL GOVERNMENT	3	96,109	4,885,543,873	50,833
Federal	1	30,552	1,963,106,794	64,255
State	1	53,504	2,256,783,858	42,180
County	1	12,053	665,653,221	55,227
Total, excluding government	25,456	337,970	13,709,537,405	40,564
Goods Producing	2,843	35,137	1,966,411,874	55,964
11 Agriculture, forestry, fishing and hunting	173	1,684	48,343,727	28,708
21 Mining	8	266	21,358,679	80,296
23 Construction	1,982	22,306	1,460,140,535	65,460
31-33 Manufacturing	680	10,880	436,568,933	40,126
Service Providing	22,613	302,831	11,743,125,531	38,778
22 Utilities	23	1,986	162,726,873	81,937
42 Wholesale trade	1,761	14,370	717,724,308	49,946
44-45 Retail trade	2,862	44,892	1,237,816,212	27,573
48-49 Transportation and warehousing	588	17,827	769,229,819	43,150
51 Information	501	7,393	427,278,095	57,795
52 Finance and insurance	1,245	13,676	803,881,800	58,780
53 Real estate and rental and leasing	1,230	7,577	323,439,900	42,687
54 Professional and technical services	3,238	21,014	1,353,626,498	64,415
55 Management of companies and enterprises	327	6,217	448,943,390	72,212
56 Administrative and waste services	1,570	30,836	922,214,122	29,907
61 Educational services	520	11,294	405,305,408	35,887
62 Health care and social assistance	2,531	46,156	2,205,862,524	47,791
71 Arts, entertainment, and recreation	291	5,988	144,786,106	24,179
72 Accommodation and food services	2,378	54,604	1,247,423,345	22,845
81 Other services, except public administration	2,620	18,576	551,957,254	29,713
99 Unclassified	928	426	20,909,877	49,084

Note: Nonprofit employers and employers with zero employment are included in the data above.

HONOLULU

(Continued)

Industry	Jan	Feb	Mar	Apr	May	Jun	Jul	Aug	Sep	Oct	Nov	Dec
TOTAL, including government	436,971	440,064	440,757	435,592	436,700	436,197	426,838	425,210	429,591	431,807	432,816	436,401
TOTAL GOVERNMENT	95,432	97,753	98,887	98,503	99,639	98,182	91,418	90,193	93,726	95,898	96,459	97,217
Federal	29,953	29,874	29,928	30,570	30,276	30,375	30,653	30,569	30,530	31,058	31,389	31,445
State	53,432	55,833	56,922	55,891	57,361	55,771	48,390	47,648	51,224	52,792	52,995	53,789
County	12,047	12,046	12,037	12,042	12,002	12,036	12,375	11,976	11,972	12,048	12,075	11,983
Total, excluding government	341,539	342,311	341,870	337,089	337,061	338,015	335,420	335,017	335,865	335,909	336,357	339,184
Goods Producing	36,665	36,309	36,080	35,293	35,239	35,267	35,177	34,806	34,623	34,215	33,846	34,121
11 Agriculture, forestry, fishing and hunting	1,689	1,687	1,688	1,648	1,666	1,680	1,748	1,715	1,688	1,641	1,626	1,736
21 Mining	263	260	258	250	260	270	271	267	271	276	276	275
23 Construction	23,548	23,269	23,049	22,462	22,438	22,435	22,436	22,046	21,853	21,598	21,231	21,304
31-33 Manufacturing	11,165	11,093	11,085	10,933	10,875	10,882	10,722	10,778	10,811	10,700	10,713	10,806
Service Providing	304,874	306,002	305,790	301,796	301,822	302,748	300,243	300,211	301,242	301,694	302,511	305,063
22 Utilities	1,944	1,965	1,969	1,975	1,976	2,005	2,008	1,987	1,985	2,002	2,000	2,012
42 Wholesale trade	14,685	14,576	14,498	14,422	14,378	14,317	14,348	14,281	14,268	14,203	14,205	14,255
44-45 Retail trade	45,720	45,196	44,827	44,149	44,000	44,284	44,202	44,074	44,516	44,787	46,021	46,931
48-49 Transportation and warehousing	18,311	18,219	18,146	17,838	17,907	17,935	17,734	17,681	17,526	17,442	17,483	17,700
51 Information	7,418	7,929	7,699	7,648	7,294	7,375	6,964	7,135	7,292	7,495	7,229	7,266
52 Finance and insurance	13,819	13,829	13,845	13,789	13,756	13,754	13,687	13,590	13,578	13,466	13,465	13,531
53 Real estate and rental and leasing	7,742	7,711	7,625	7,548	7,668	7,635	7,561	7,479	7,427	7,537	7,471	7,515
54 Professional and technical services	21,531	21,579	21,503	21,288	20,774	20,882	20,767	20,732	20,550	20,649	20,762	21,151
55 Management of companies and enterprises	6,441	6,427	6,439	6,221	6,148	6,176	6,163	6,194	6,102	6,070	6,111	6,113
56 Administrative and waste services	31,408	31,330	31,496	30,428	30,681	30,576	30,166	30,235	30,517	31,218	30,840	31,131
61 Educational services	10,972	11,362	11,423	11,343	11,532	11,463	11,109	10,959	11,321	11,258	11,379	11,409
62 Health care and social assistance	45,896	46,116	46,286	45,903	46,083	46,379	46,034	45,914	46,184	46,128	46,290	46,660
71 Arts, entertainment, and recreation	5,891	5,886	5,959	5,885	5,983	6,188	5,976	6,120	6,044	6,116	5,953	5,858
72 Accommodation and food services	54,337	54,898	55,080	54,552	54,765	54,924	54,724	54,807	54,783	54,102	54,041	54,236
81 Other services, except public administration	18,354	18,558	18,530	18,498	18,559	18,520	18,389	18,604	18,705	18,736	18,732	18,723
99 Unclassified	405	421	465	309	318	335	411	419	444	485	529	572

HAWAII

EMPLOYMENT AND WAGES OF WORKERS COVERED BY HAWAII EMPLOYMENT SECURITY LAW  
AND UNEMPLOYMENT COMPENSATION FOR FEDERAL EMPLOYEES  
CLASSIFIED BY INDUSTRY FOR CALENDAR YEAR 2009

Industry	No. of Rep. Units December	Average Employment	Total Wages	Average Annual Wage
TOTAL, including government	5,000	62,947	2,301,322,984	36,560
TOTAL GOVERNMENT	3	12,349	625,141,016	50,623
Federal	1	1,359	74,359,743	54,717
State	1	8,265	412,459,640	49,904
County	1	2,725	138,321,633	50,760
Total, excluding government	4,997	50,597	1,676,181,968	33,128
Goods Producing	1,008	7,433	310,883,336	41,825
11-21 Natural Resources and Mining	196	2,299	61,253,057	26,643
23 Construction	656	3,789	206,772,098	54,572
31-33 Manufacturing	156	1,346	42,858,181	31,841
Service Providing	3,989	43,164	1,365,298,632	31,630
22 Utilities	19	535	41,769,573	78,074
42 Wholesale trade	190	1,600	62,351,641	38,970
44-45 Retail trade	668	8,864	229,654,506	25,909
48-49 Transportation and warehousing	194	2,148	68,808,120	32,034
51 Information	76	625	28,017,892	44,829
52 Finance and insurance	205	1,147	47,851,845	41,719
53 Real estate and rental and leasing	261	1,620	57,751,030	35,649
54 Professional and technical services	416	1,453	73,671,244	50,703
55 Management of companies and enterprises	44	268	17,078,562	63,726
56 Administrative and waste services	293	2,812	74,965,084	26,659
61 Educational services	87	1,200	39,592,401	32,994
62 Health care and social assistance	501	6,338	224,016,314	35,345
71 Arts, entertainment, and recreation	106	1,716	55,977,647	32,621
72 Accommodation and food services	474	10,886	287,576,245	26,417
81 Other services, except public administration	455	1,951	56,216,528	28,814

Note: Nonprofit employers and employers with zero employment are included in the data above.

HAWAII  
(Continued)

Industry	Jan	Feb	Mar	Apr	May	Jun	Jul	Aug	Sep	Oct	Nov	Dec
TOTAL, including government	64,342	64,020	63,740	63,361	63,072	63,018	62,760	62,512	62,182	61,832	62,099	62,422
TOTAL GOVERNMENT	12,373	12,434	12,443	12,567	12,614	12,332	12,357	12,201	12,203	12,245	12,192	12,231
Federal	1,344	1,341	1,339	1,446	1,418	1,354	1,358	1,331	1,331	1,354	1,344	1,351
State	8,291	8,371	8,372	8,383	8,459	8,230	8,254	8,087	8,147	8,209	8,177	8,199
County	2,738	2,722	2,732	2,738	2,737	2,748	2,745	2,783	2,725	2,682	2,671	2,681
Total, excluding government	51,969	51,586	51,297	50,794	50,458	50,686	50,403	50,311	49,979	49,587	49,907	50,191
Goods Producing	8,168	7,953	7,708	7,461	7,336	7,305	7,242	7,195	7,265	7,220	7,233	7,115
11-21 Natural Resources and Mining	2,335	2,294	2,218	2,238	2,242	2,240	2,265	2,285	2,363	2,377	2,373	2,357
23 Construction	4,459	4,279	4,140	3,904	3,775	3,766	3,682	3,546	3,538	3,488	3,488	3,398
31-33 Manufacturing	1,374	1,380	1,350	1,319	1,319	1,299	1,295	1,364	1,364	1,355	1,372	1,360
Service Providing	43,801	43,633	43,589	43,333	43,122	43,381	43,161	43,116	42,714	42,367	42,674	43,076
22 Utilities	514	534	539	539	537	550	537	534	535	535	534	533
42 Wholesale trade	1,672	1,644	1,623	1,621	1,600	1,600	1,578	1,570	1,579	1,574	1,569	1,575
44-45 Retail trade	9,031	8,915	8,875	8,765	8,692	8,861	8,921	8,875	8,862	8,812	8,830	8,933
48-49 Transportation and warehousing	2,213	2,196	2,161	2,176	2,176	2,153	2,148	2,165	2,146	2,125	2,058	2,058
51 Information	633	627	631	640	627	632	627	618	617	607	617	625
52 Finance and insurance	1,171	1,175	1,176	1,175	1,162	1,157	1,125	1,129	1,144	1,132	1,109	1,113
53 Real estate and rental and leasing	1,495	1,486	1,477	1,650	1,651	1,654	1,651	1,686	1,667	1,666	1,668	1,689
54 Professional and technical services	1,499	1,521	1,508	1,488	1,445	1,450	1,439	1,439	1,409	1,405	1,404	1,431
55 Management of companies and enterprises	284	278	284	280	271	269	264	263	262	254	252	256
56 Administrative and waste services	2,862	2,828	2,782	2,733	2,747	2,722	2,815	2,809	2,735	2,878	2,852	2,985
61 Educational services	1,204	1,250	1,261	1,235	1,260	1,209	1,129	1,121	1,151	1,176	1,194	1,208
62 Health care and social assistance	6,189	6,219	6,272	6,277	6,273	6,584	6,462	6,371	6,388	6,328	6,319	6,373
71 Arts, entertainment, and recreation	1,856	1,764	1,779	1,705	1,661	1,651	1,709	1,699	1,764	1,628	1,667	1,713
72 Accommodation and food services	11,100	11,102	11,087	11,095	11,071	10,932	10,855	10,938	10,538	10,369	10,762	10,778
81 Other services, except public administration	2,078	2,094	2,134	1,954	1,949	1,957	1,901	1,899	1,917	1,878	1,839	1,806

MAUI

EMPLOYMENT AND WAGES OF WORKERS COVERED BY HAWAII EMPLOYMENT SECURITY LAW  
AND UNEMPLOYMENT COMPENSATION FOR FEDERAL EMPLOYEES  
CLASSIFIED BY INDUSTRY FOR CALENDAR YEAR 2009

Industry	No. of Rep. Units December	Average Employment	Total Wages	Average Annual Wage
TOTAL, including government	4,916	66,872	2,523,092,977	37,730
TOTAL GOVERNMENT	3	9,574	486,993,220	50,866
Federal	1	879	47,787,774	54,366
State	1	6,042	302,005,845	49,984
County	1	2,653	137,199,601	51,715
Total, excluding government	4,913	57,298	2,036,099,757	35,535
Goods Producing	827	6,178	301,504,784	48,803
11-21 Natural Resources and Mining	81	1,697	66,878,564	39,410
23 Construction	622	3,378	191,788,459	56,776
31-33 Manufacturing	124	1,103	42,837,761	38,837
Service Providing	4,086	51,120	1,734,594,973	33,932
22 Utilities	20	443	34,577,076	78,052
42 Wholesale trade	171	1,380	61,511,803	44,574
44-45 Retail trade	730	8,909	250,078,988	28,070
48-49 Transportation and warehousing	171	2,494	76,004,206	30,475
51 Information	75	774	39,680,833	51,267
52 Finance and insurance	179	861	39,556,338	45,942
53 Real estate and rental and leasing	277	1,567	57,386,660	36,622
54 Professional and technical services	409	1,434	74,321,809	51,828
55 Management of companies and enterprises	37	381	23,144,465	60,747
56 Administrative and waste services	349	4,421	143,362,811	32,428
61 Educational services	75	1,017	33,649,223	33,087
62 Health care and social assistance	401	4,933	202,180,363	40,985
71 Arts, entertainment, and recreation	130	2,020	56,609,632	28,025
72 Accommodation and food services	542	17,836	565,032,534	31,679
81 Other services, except public administration	520	2,651	77,498,232	29,234

Note: Nonprofit employers and employers with zero employment are included in the data above.

MAUI  
(Continued)

Industry	Jan	Feb	Mar	Apr	May	Jun	Jul	Aug	Sep	Oct	Nov	Dec
TOTAL, including government	68,269	67,656	67,649	67,385	67,055	67,620	66,832	66,548	66,316	65,579	65,577	65,984
TOTAL GOVERNMENT	9,506	9,392	9,465	9,645	9,605	9,769	9,654	9,632	9,767	9,452	9,492	9,511
Federal	872	867	861	932	926	870	885	869	865	865	865	873
State	6,006	6,045	6,120	6,119	6,174	6,043	5,910	5,888	6,022	6,036	6,067	6,079
County	2,628	2,480	2,484	2,594	2,505	2,856	2,859	2,875	2,880	2,551	2,560	2,559
Total, excluding government	58,763	58,264	58,184	57,740	57,450	57,851	57,178	56,916	56,549	56,127	56,085	56,473
Goods Producing	6,767	6,591	6,467	6,365	6,345	6,341	6,129	5,907	5,898	5,838	5,741	5,746
11-21 Natural Resources and Mining	1,757	1,759	1,726	1,735	1,698	1,635	1,690	1,627	1,654	1,683	1,649	1,749
23 Construction	3,860	3,711	3,619	3,524	3,543	3,596	3,337	3,195	3,143	3,072	3,015	2,922
31-33 Manufacturing	1,150	1,121	1,122	1,106	1,104	1,110	1,102	1,085	1,101	1,083	1,077	1,075
Service Providing	51,996	51,673	51,717	51,375	51,105	51,510	51,049	51,009	50,651	50,289	50,344	50,727
22 Utilities	443	443	441	441	443	445	446	444	442	436	442	447
42 Wholesale trade	1,424	1,386	1,391	1,393	1,372	1,375	1,355	1,370	1,387	1,384	1,363	1,358
44-45 Retail trade	9,249	9,094	9,044	8,890	8,839	8,815	8,846	8,808	8,792	8,672	8,851	9,007
48-49 Transportation and warehousing	2,559	2,542	2,529	2,523	2,514	2,494	2,505	2,495	2,486	2,448	2,408	2,425
51 Information	766	793	767	789	787	769	786	769	760	755	779	766
52 Finance and insurance	870	882	872	882	864	855	865	857	861	831	851	845
53 Real estate and rental and leasing	1,578	1,566	1,542	1,539	1,512	1,547	1,520	1,588	1,592	1,598	1,607	1,615
54 Professional and technical services	1,507	1,523	1,495	1,464	1,424	1,443	1,407	1,399	1,374	1,377	1,389	1,409
55 Management of companies and enterprises	447	437	415	398	385	372	363	356	356	347	345	349
56 Administrative and waste services	4,318	4,273	4,268	4,517	4,484	4,570	4,530	4,495	4,323	4,472	4,408	4,394
61 Educational services	1,008	1,056	1,047	1,053	1,056	1,076	962	973	992	986	997	995
62 Health care and social assistance	4,836	4,879	4,886	4,880	4,908	5,045	4,975	4,971	4,955	4,947	4,951	4,963
71 Arts, entertainment, and recreation	2,079	2,042	2,076	2,005	2,034	2,053	2,016	1,992	1,956	2,021	1,994	1,977
72 Accommodation and food services	18,303	18,147	18,224	17,986	17,879	17,992	17,808	17,870	17,666	17,358	17,285	17,515
81 Other services, except public administration	2,609	2,610	2,720	2,615	2,604	2,659	2,665	2,622	2,709	2,657	2,674	2,662



## KAUAI

EMPLOYMENT AND WAGES OF WORKERS COVERED BY HAWAII EMPLOYMENT SECURITY LAW  
AND UNEMPLOYMENT COMPENSATION FOR FEDERAL EMPLOYEES  
CLASSIFIED BY INDUSTRY FOR CALENDAR YEAR 2009

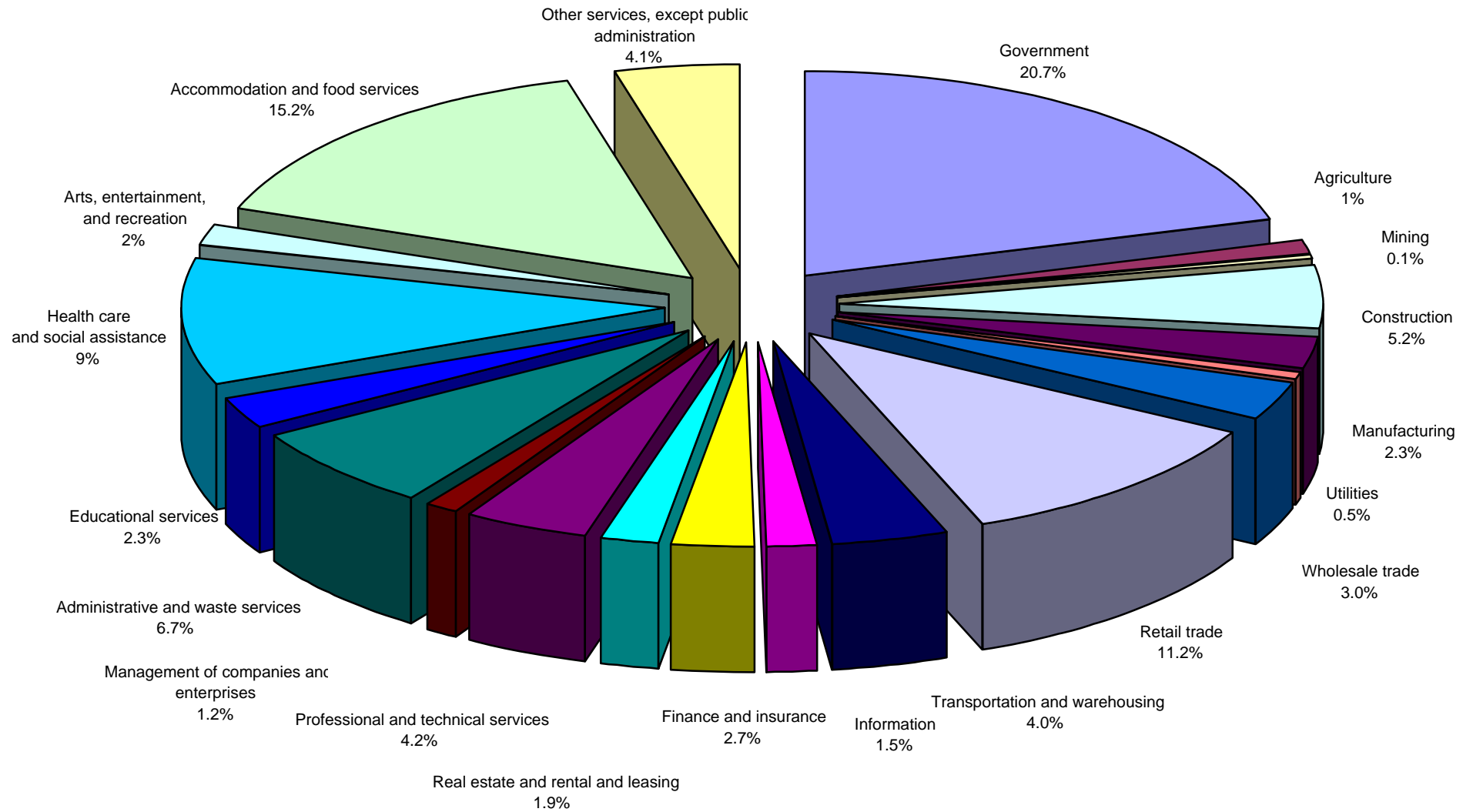
Industry	No. of Rep. Units December	Average Employment	Total Wages	Average Annual Wage
TOTAL, including government	2,177	28,291	1,054,378,799	37,269
TOTAL GOVERNMENT	3	4,422	233,604,276	52,828
Federal	1	535	32,273,051	60,323
State	1	2,655	133,276,679	50,198
County	1	1,232	68,054,546	55,239
Total, excluding government	2,174	23,869	820,774,523	34,387
Goods Producing	399	2,765	127,646,042	46,165
11-21 Natural Resources and Mining	25	833	29,115,687	34,953
23 Construction	322	1,563	88,598,083	56,685
31-33 Manufacturing	52	370	9,932,272	26,844
Service Providing	1,775	21,101	693,128,481	32,848
22 Utilities	10	227	17,295,263	76,191
42 Wholesale trade	68	465	16,511,620	35,509
44-45 Retail trade	323	3,832	103,197,858	26,931
48-49 Transportation and warehousing	72	1,077	34,106,705	31,668
51 Information	34	273	12,044,875	44,120
52 Finance and insurance	81	562	29,380,253	52,278
53 Real estate and rental and leasing	131	641	20,575,912	32,100
54 Professional and technical services	177	741	38,338,868	51,739
55 Management of companies and enterprises	18	123	8,453,256	68,726
56 Administrative and waste services	147	1,844	67,052,741	36,363
61 Educational services	31	239	9,581,332	40,089
62 Health care and social assistance	177	2,256	102,838,705	45,585
71 Arts, entertainment, and recreation	52	973	23,765,333	24,425
72 Accommodation and food services	251	6,807	181,206,318	26,621
81 Other services, except public administration	203	1,043	28,779,442	27,593

Note: Nonprofit employers and employers with zero employment are included in the data above.

KAUAI  
(Continued)

Industry	Jan	Feb	Mar	Apr	May	Jun	Jul	Aug	Sep	Oct	Nov	Dec
TOTAL, including government	28,652	28,405	28,252	28,328	28,100	28,315	28,313	28,264	28,189	28,258	28,161	28,253
TOTAL GOVERNMENT	4,388	4,409	4,411	4,471	4,443	4,409	4,489	4,467	4,374	4,410	4,389	4,400
Federal	532	524	524	557	535	539	536	527	530	548	531	534
State	2,658	2,696	2,682	2,695	2,692	2,660	2,596	2,584	2,632	2,655	2,650	2,656
County	1,198	1,189	1,205	1,219	1,216	1,210	1,357	1,356	1,212	1,207	1,208	1,210
Total, excluding government	24,264	23,996	23,841	23,857	23,657	23,906	23,824	23,797	23,815	23,848	23,772	23,853
Goods Producing	3,033	2,893	2,841	2,780	2,669	2,713	2,750	2,723	2,730	2,718	2,754	2,579
11-21 Natural Resources and Mining	882	836	827	817	749	792	813	834	903	882	871	786
23 Construction	1,770	1,688	1,639	1,598	1,545	1,549	1,560	1,504	1,452	1,468	1,505	1,474
31-33 Manufacturing	381	369	375	365	375	372	377	385	375	368	378	319
Service Providing	21,231	21,103	21,000	21,077	20,988	21,193	21,074	21,074	21,085	21,130	21,018	21,274
22 Utilities	229	224	223	224	224	227	228	227	228	230	229	229
42 Wholesale trade	489	488	478	460	462	461	456	452	461	457	455	456
44-45 Retail trade	3,938	3,868	3,820	3,804	3,813	3,854	3,803	3,824	3,790	3,766	3,836	3,862
48-49 Transportation and warehousing	1,082	1,062	1,075	1,080	1,086	1,102	1,090	1,087	1,079	1,076	1,054	1,049
51 Information	254	257	255	329	328	309	254	256	255	258	258	258
52 Finance and insurance	559	567	571	559	557	560	550	561	565	561	560	570
53 Real estate and rental and leasing	609	603	603	646	639	651	628	677	683	666	663	659
54 Professional and technical services	843	817	785	770	692	698	698	699	673	730	712	777
55 Management of companies and enterprises	135	136	135	121	115	118	121	120	119	118	115	120
56 Administrative and waste services	1,772	1,763	1,770	1,862	1,856	1,915	1,889	1,891	1,866	1,839	1,851	1,856
61 Educational services	225	255	275	269	284	277	232	191	199	205	215	244
62 Health care and social assistance	2,290	2,305	2,250	2,228	2,235	2,257	2,232	2,255	2,200	2,264	2,268	2,293
71 Arts, entertainment, and recreation	988	982	971	985	967	986	990	1,041	961	948	937	915
72 Accommodation and food services	6,763	6,706	6,716	6,706	6,704	6,732	6,856	6,767	6,967	6,968	6,834	6,965
81 Other services, except public administration	1,055	1,070	1,073	1,034	1,026	1,046	1,047	1,026	1,039	1,044	1,031	1,021

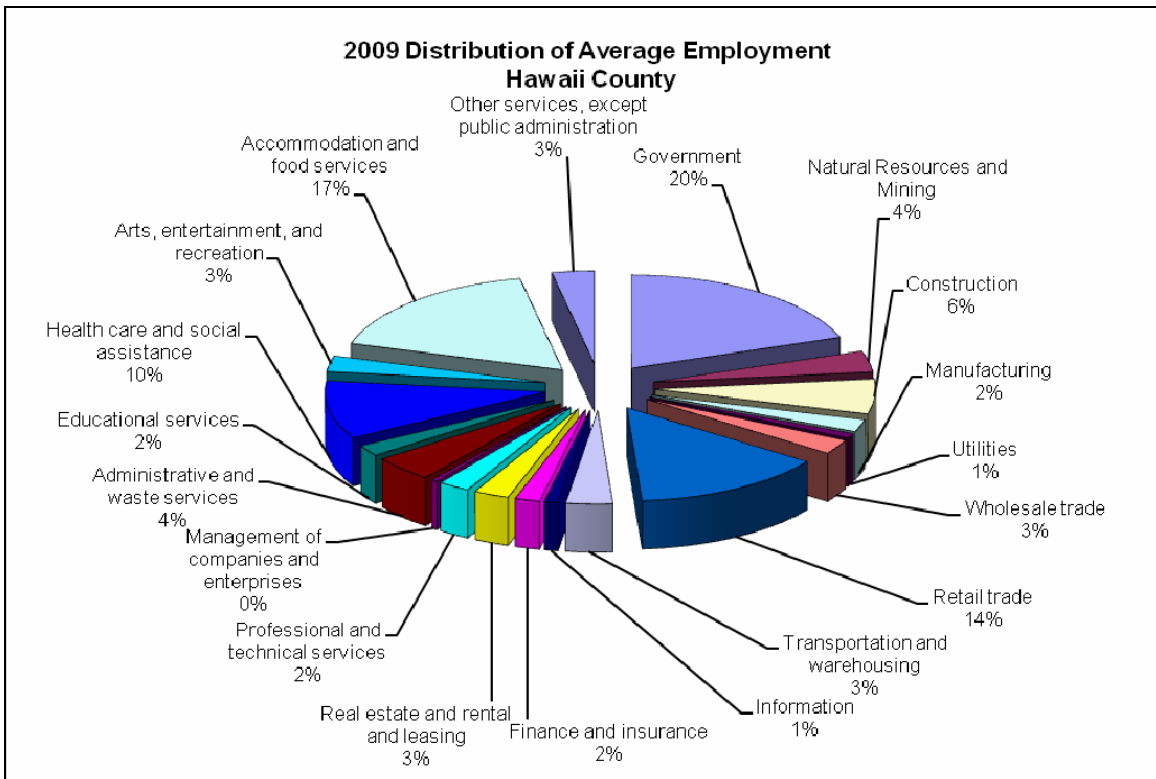
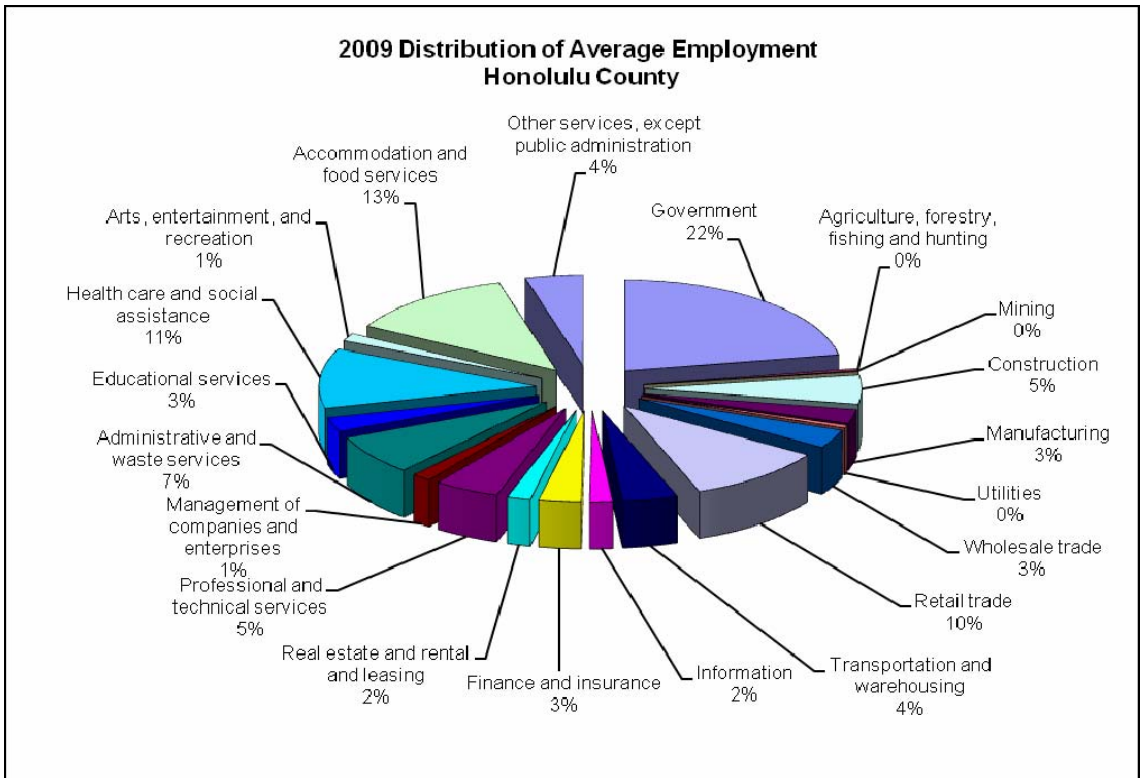
## 2009 Distribution of Statewide Average Employment



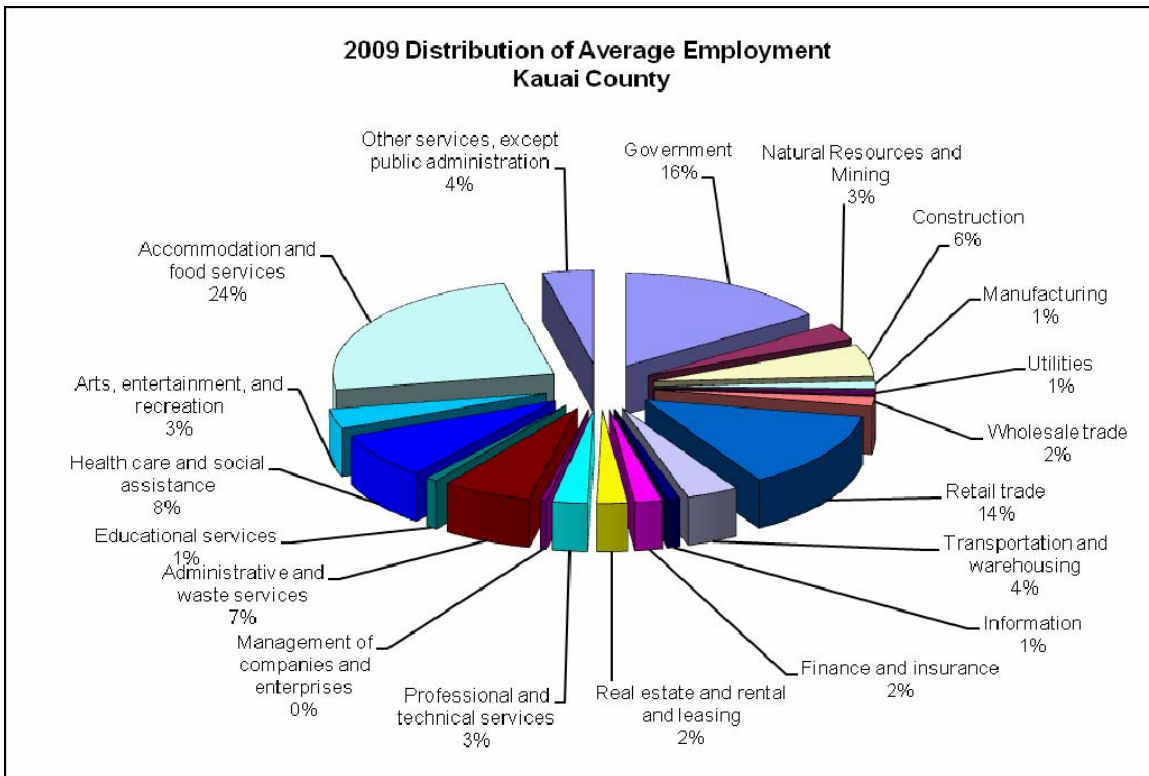
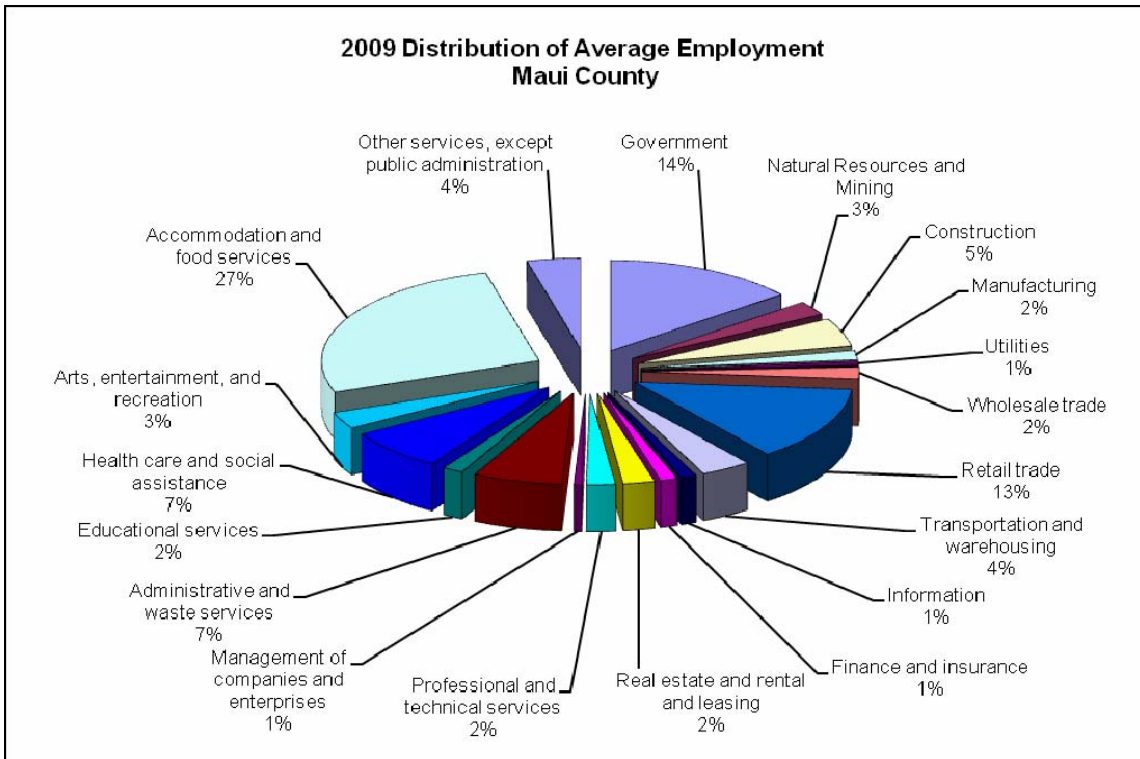
Note: Percentage totals may not add up to 100 percent due to rounding.

### 1990-2009 Annual Average Employment by County

	1990	1991	1992	1993	1994	1995	1996	1997	1998	1999	2000	2001	2002	2003	2004	2005	2006	2007	2008	2009
<b>State of Hawaii</b>																				
TOTAL, including Government	534,432	543,397	547,883	542,481	539,559	535,750	533,310	534,050	534,140	537,678	552,955	557,041	558,494	569,538	585,292	603,663	618,403	625,835	619,898	592,189
Total Government	101,522	104,060	107,003	107,551	108,059	107,692	106,374	107,163	107,885	108,499	109,734	111,009	114,118	115,430	116,369	116,390	117,752	118,903	121,465	122,454
Federal	34,153	33,280	33,364	32,040	31,721	31,478	31,319	30,674	30,388	30,282	30,390	30,091	30,674	31,627	31,464	31,279	31,879	31,744	32,195	33,325
State	52,989	55,979	58,246	59,991	60,729	59,795	58,430	59,488	60,289	61,228	62,343	63,831	66,316	66,865	67,793	67,890	68,404	69,229	70,745	70,466
County	14,380	14,802	15,392	15,520	15,609	16,419	16,624	17,001	17,208	16,989	17,002	17,088	17,129	16,938	17,113	17,222	17,470	17,930	18,525	18,663
TOTAL, excluding Government	432,910	439,337	440,881	434,931	431,500	428,058	426,936	426,887	426,255	429,179	443,221	446,032	444,376	454,108	468,923	487,273	500,651	506,932	498,433	469,735
<b>Honolulu County</b>																				
TOTAL, including Government	409,756	413,048	417,055	413,042	409,149	406,486	403,279	401,500	400,035	399,732	408,821	410,275	410,183	417,477	427,349	440,540	450,215	451,947	449,311	434,079
Total Government	83,947	85,322	87,235	86,932	86,916	86,563	85,341	85,808	86,194	86,462	87,239	88,227	90,536	91,561	92,515	92,290	93,241	93,740	95,430	96,109
Federal	32,533	31,687	31,750	30,343	29,937	29,642	29,480	28,833	28,520	28,388	28,337	28,164	28,591	29,126	28,994	28,799	29,357	29,120	29,439	30,552
State	41,419	43,405	44,980	46,007	46,469	45,625	44,404	45,213	45,816	46,409	47,272	48,394	50,329	51,023	52,011	52,014	52,347	52,813	53,908	53,504
County	9,995	10,231	10,505	10,583	10,510	11,296	11,457	11,763	11,857	11,665	11,629	11,669	11,616	11,412	11,510	11,477	11,536	11,807	12,083	12,053
TOTAL, excluding Government	325,809	327,726	329,820	326,110	322,233	319,923	317,939	315,692	313,841	313,270	321,582	322,049	319,647	325,916	334,834	348,249	356,974	358,208	353,881	337,970
<b>Hawaii County</b>																				
TOTAL, including Government	48,706	50,955	50,382	49,882	49,616	48,875	49,896	51,367	51,405	52,606	55,242	56,415	57,866	59,124	61,546	64,009	66,438	68,944	67,346	62,947
Total Government	8,400	8,899	9,311	9,525	9,806	9,789	9,776	9,900	10,139	10,338	10,558	10,681	11,016	11,054	11,121	11,261	11,505	11,826	12,276	12,349
Federal	822	818	806	847	884	928	937	949	969	981	1,049	997	1,071	1,210	1,221	1,231	1,246	1,279	1,332	1,359
State	5,614	6,034	6,342	6,603	6,815	6,766	6,684	6,771	6,915	7,106	7,238	7,428	7,691	7,600	7,608	7,696	7,814	8,009	8,240	8,265
County	1,964	2,047	2,164	2,074	2,106	2,095	2,155	2,180	2,254	2,251	2,272	2,255	2,254	2,244	2,291	2,335	2,445	2,538	2,705	2,725
TOTAL, excluding Government	40,306	42,056	41,071	40,357	39,811	39,086	40,120	41,467	41,266	42,269	44,684	45,735	46,850	48,070	50,426	52,747	54,933	57,119	55,070	50,597
<b>Maui County</b>																				
TOTAL, including Government	51,083	53,001	55,016	56,094	56,554	55,895	55,861	56,965	57,977	59,892	62,383	63,859	63,711	65,084	67,604	69,531	71,575	74,124	72,684	66,872
Total Government	5,815	6,303	6,676	6,985	7,282	7,301	7,333	7,525	7,604	7,707	7,864	8,002	8,384	8,607	8,565	8,666	8,794	9,042	9,370	9,574
Federal	442	430	446	451	470	491	502	500	511	523	586	545	603	799	761	762	776	808	877	879
State	3,848	4,256	4,486	4,681	4,899	4,875	4,862	5,006	5,048	5,146	5,233	5,372	5,630	5,635	5,615	5,625	5,673	5,816	5,960	6,042
County	1,524	1,617	1,744	1,854	1,914	1,936	1,970	2,019	2,044	2,038	2,045	2,085	2,151	2,172	2,188	2,279	2,346	2,419	2,533	2,653
TOTAL, excluding Government	45,268	46,698	48,340	49,109	49,271	48,594	48,528	49,440	50,373	52,186	54,518	55,857	55,327	56,477	59,040	60,865	62,781	65,082	63,315	57,298
<b>Kauai County</b>																				
TOTAL, including Government	24,888	26,393	25,430	23,464	24,240	24,494	24,274	24,219	24,723	25,448	26,509	26,491	26,735	27,854	28,793	29,584	30,175	30,820	30,557	28,291
Total Government	3,361	3,536	3,780	4,108	4,055	4,039	3,924	3,931	3,949	3,993	4,073	4,099	4,182	4,208	4,169	4,172	4,213	4,296	4,389	4,422
Federal	356	345	362	399	429	418	400	393	388	391	418	384	409	492	487	487	500	537	548	535
State	2,108	2,284	2,439	2,700	2,546	2,530	2,481	2,498	2,510	2,567	2,600	2,636	2,666	2,606	2,558	2,554	2,570	2,591	2,637	2,655
County	898	907	979	1,009	1,080	1,092	1,043	1,040	1,052	1,035	1,055	1,079	1,108	1,111	1,124	1,131	1,143	1,167	1,205	1,232
TOTAL, excluding Government	21,527	22,857	21,650	19,355	20,184	20,455	20,350	20,288	20,774	21,455	22,436	22,392	22,553	23,646	24,624	25,412	25,963	26,524	26,167	23,869

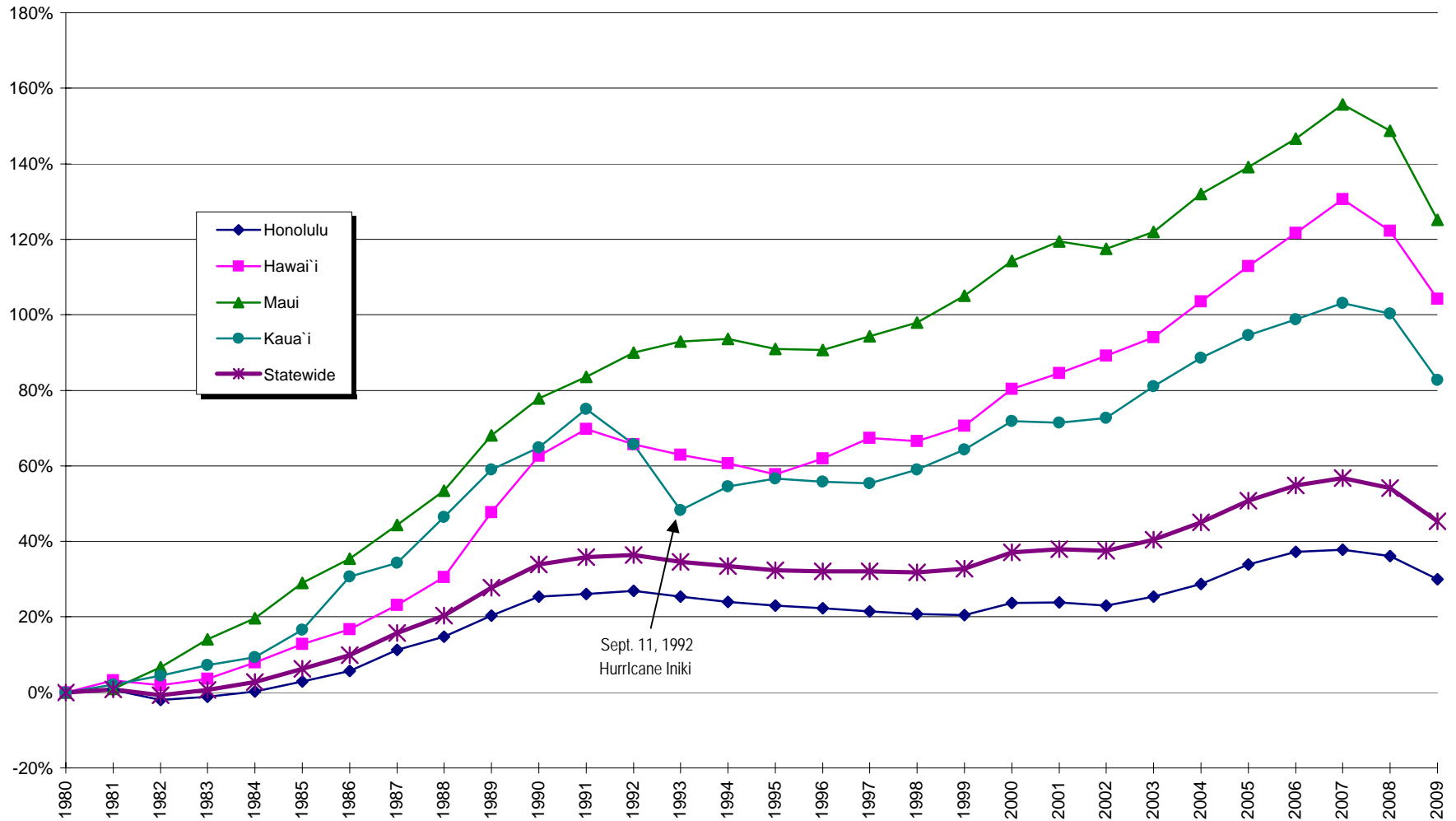


Note: Percentage totals may not add up to 100 percent due to rounding.



Note: Percentage totals may not add up to 100 percent due to rounding.

## Percentage Growth 1980-2009 Private Sector Employment



2001-2009 STATEWIDE ANNUAL AVERAGE EMPLOYMENT  
COMPARISON BY NAICS SECTOR

Industry	2001 Average Employment	2002 Average Employment	2003 Average Employment	2004 Average Employment	2005 Average Employment	2006 Average Employment	2007 Average Employment	2008 Average Employment	2009 Average Employment
<b>TOTAL, including Government</b>	<b>557,041</b>	<b>558,494</b>	<b>569,538</b>	<b>585,292</b>	<b>603,663</b>	<b>618,403</b>	<b>625,835</b>	<b>619,898</b>	<b>592,189</b>
<b>TOTAL GOVERNMENT</b>	<b>111,009</b>	<b>114,118</b>	<b>115,430</b>	<b>116,369</b>	<b>116,390</b>	<b>117,752</b>	<b>118,903</b>	<b>121,465</b>	<b>122,454</b>
Federal	30,091	30,674	31,627	31,464	31,279	31,879	31,744	32,195	33,325
State	63,831	66,316	66,865	67,793	67,890	68,404	69,229	70,745	70,466
County	17,088	17,129	16,938	17,113	17,222	17,470	17,930	18,525	18,663
<b>Total , excluding government</b>	<b>446,032</b>	<b>444,376</b>	<b>454,108</b>	<b>468,923</b>	<b>487,273</b>	<b>500,651</b>	<b>506,932</b>	<b>498,433</b>	<b>469,735</b>
<b>Goods Producing</b>	<b>48,936</b>	<b>48,725</b>	<b>50,557</b>	<b>52,843</b>	<b>56,217</b>	<b>58,483</b>	<b>60,983</b>	<b>59,495</b>	<b>51,513</b>
11 Agriculture, forestry, fishing and hunting	7,749	7,633	7,671	7,839	7,600	7,313	6,596	6,733	6,439
21 Mining	245	222	262	278	288	285	302	326	340
23 Construction	24,483	25,631	27,677	29,210	33,110	35,730	38,807	37,542	31,035
31-33 Manufacturing	16,459	15,240	14,948	15,516	15,219	15,155	15,278	14,893	13,699
<b>Service Providing</b>	<b>396,962</b>	<b>395,555</b>	<b>403,551</b>	<b>416,080</b>	<b>431,056</b>	<b>442,167</b>	<b>445,949</b>	<b>438,938</b>	<b>418,221</b>
22 Utilities	2,668	2,698	2,691	2,728	2,873	2,931	3,016	3,083	3,190
42 Wholesale trade	16,391	16,294	16,755	17,066	17,627	17,953	18,435	18,765	17,815
44-45 Retail trade	66,357	64,255	64,522	67,104	69,297	70,001	70,249	69,837	66,497
48-49 Transportation and warehousing	25,593	23,647	24,113	25,451	27,922	29,837	29,970	26,417	23,546
51 Information	11,859	11,690	10,582	10,860	10,798	10,708	10,691	10,038	9,067
52 Finance and insurance	15,832	15,840	16,070	16,434	16,547	16,898	16,909	16,695	16,246
53 Real estate and rental and leasing	12,348	11,854	12,347	12,423	12,776	13,029	13,174	12,696	11,408
54 Professional and technical services	21,093	21,822	22,424	22,860	23,257	24,131	24,597	25,062	24,643
55 Management of companies and enterprises	5,944	6,519	6,731	6,852	7,330	7,515	7,612	7,413	6,989
56 Administrative and waste services	36,605	38,810	40,523	41,055	43,627	46,675	44,027	42,981	39,913
61 Educational services	10,474	10,914	11,562	11,945	12,586	12,854	13,295	13,848	13,750
62 Health care and social assistance	49,726	50,865	52,332	54,054	55,900	56,854	58,452	59,174	59,683
71 Arts, entertainment, and recreation	11,176	11,023	11,102	11,427	11,610	11,521	12,042	11,604	10,698
72 Accommodation and food services	87,951	86,444	88,515	92,321	94,777	96,346	97,966	95,432	90,133
81 Other services, except public administration	22,925	22,881	23,214	23,451	24,027	24,705	25,230	25,283	24,219
99 Unclassified	135	96	69	49	101	212	286	610	426



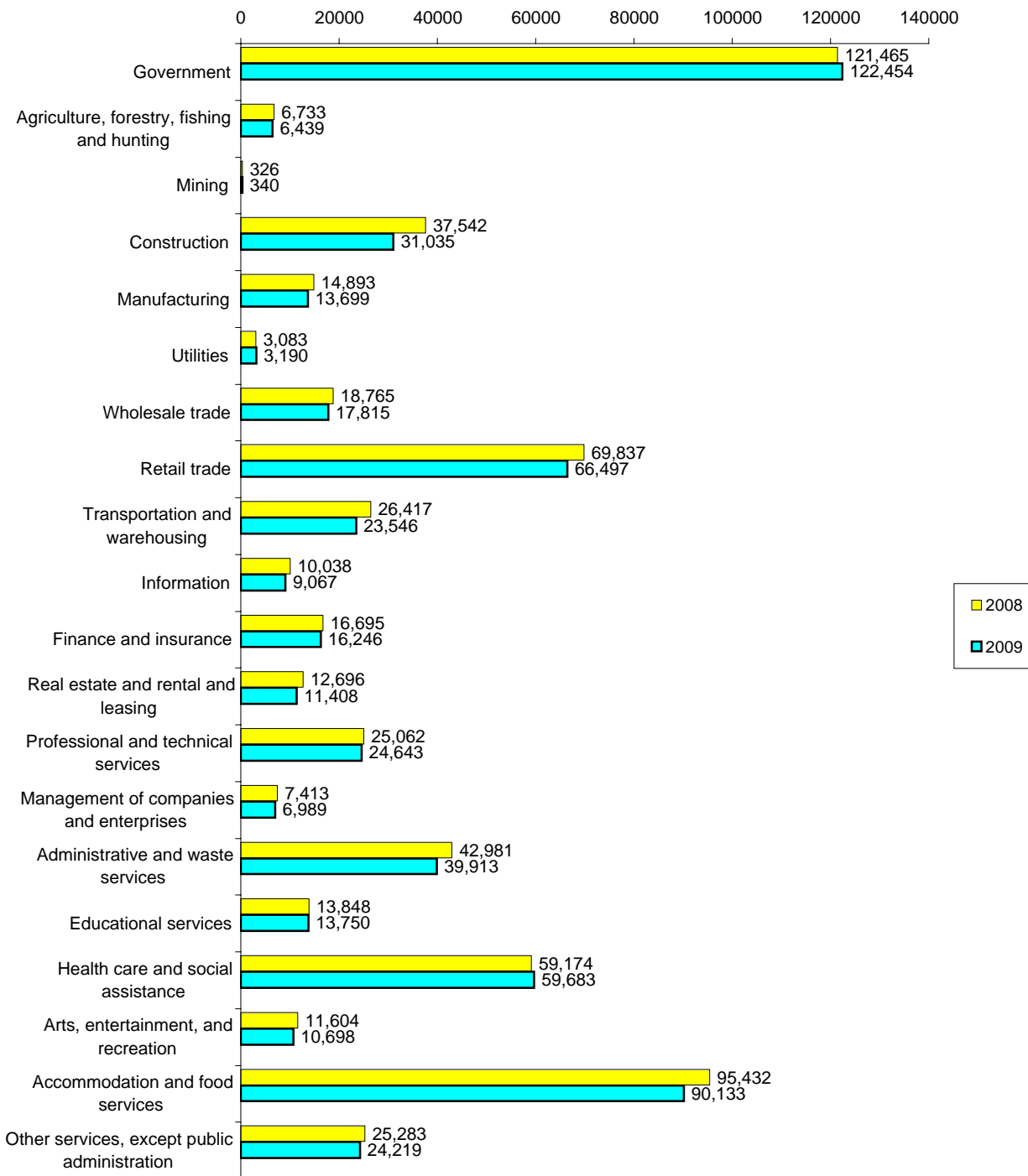
2001-2009 STATEWIDE ANNUAL AVERAGE EMPLOYMENT  
COMPARISON BY NAICS SECTOR

Industry	2001-2002 Difference	2001-2002 % Difference	2002-2003 Difference	2002-2003 % Difference	2003-2004 Difference	2003-2004 % Difference	2004-2005 Difference	2004-2005 % Difference	2005-2006 Difference	2005-2006 % Difference
<b>TOTAL, including Government</b>	<b>1,453</b>	<b>0.26%</b>	<b>11,044</b>	<b>1.98%</b>	<b>15,754</b>	<b>2.77%</b>	<b>18,371</b>	<b>3.1%</b>	<b>14,740</b>	<b>2.4%</b>
<b>TOTAL GOVERNMENT</b>	<b>3,109</b>	<b>2.80%</b>	<b>1,312</b>	<b>1.15%</b>	<b>939</b>	<b>0.81%</b>	<b>21</b>	<b>0.0%</b>	<b>1,362</b>	<b>1.2%</b>
Federal	583	1.94%	953	3.11%	-163	-0.52%	-185	-0.6%	600	1.9%
State	2,485	3.89%	549	0.83%	928	1.39%	97	0.1%	514	0.8%
County	41	0.24%	-191	-1.12%	175	1.03%	109	0.6%	248	1.4%
<b>Total , excluding government</b>	<b>-1,656</b>	<b>-0.37%</b>	<b>9,732</b>	<b>2.19%</b>	<b>14,815</b>	<b>3.26%</b>	<b>18,350</b>	<b>3.9%</b>	<b>13,378</b>	<b>2.7%</b>
<b>Goods Producing</b>	<b>-211</b>	<b>-0.43%</b>	<b>1,832</b>	<b>3.76%</b>	<b>2,286</b>	<b>4.52%</b>	<b>3,374</b>	<b>6.4%</b>	<b>2,266</b>	<b>4.0%</b>
11 Agriculture, forestry, fishing and hunting	-116	-1.50%	38	0.50%	168	2.19%	-239	-3.0%	-287	-3.8%
21 Mining	-23	-9.39%	40	18.02%	16	6.11%	10	3.6%	-3	-1.0%
23 Construction	1,148	4.69%	2,046	7.98%	1,533	5.54%	3,900	13.4%	2,620	7.9%
31-33 Manufacturing	-1,219	-7.41%	-292	-1.92%	568	3.80%	-297	-1.9%	-64	-0.4%
<b>Service Providing</b>	<b>-1,407</b>	<b>-0.35%</b>	<b>7,996</b>	<b>2.02%</b>	<b>12,529</b>	<b>3.10%</b>	<b>14,976</b>	<b>3.6%</b>	<b>11,111</b>	<b>2.6%</b>
22 Utilities	30	1.12%	-7	-0.26%	37	1.37%	145	5.3%	58	2.0%
42 Wholesale trade	-97	-0.59%	461	2.83%	311	1.86%	561	3.3%	326	1.8%
44-45 Retail trade	-2,102	-3.17%	267	0.42%	2,582	4.00%	2,193	3.3%	704	1.0%
48-49 Transportation and warehousing	-1,946	-7.60%	466	1.97%	1,338	5.55%	2,471	9.7%	1,915	6.9%
51 Information	-169	-1.43%	-1,108	-9.48%	278	2.63%	-62	-0.6%	-90	-0.8%
52 Finance and insurance	8	0.05%	230	1.45%	364	2.27%	113	0.7%	351	2.1%
53 Real estate and rental and leasing	-494	-4.00%	493	4.16%	76	0.62%	353	2.8%	253	2.0%
54 Professional and technical services	729	3.46%	602	2.76%	436	1.94%	397	1.7%	874	3.8%
55 Management of companies and enterprises	575	9.67%	212	3.25%	121	1.80%	478	7.0%	185	2.5%
56 Administrative and waste services	2,205	6.02%	1,713	4.41%	532	1.31%	2,572	6.3%	3,048	7.0%
61 Educational services	440	4.20%	648	5.94%	383	3.31%	641	5.4%	268	2.1%
62 Health care and social assistance	1,139	2.29%	1,467	2.88%	1,722	3.29%	1,846	3.4%	954	1.7%
71 Arts, entertainment, and recreation	-153	-1.37%	79	0.72%	325	2.93%	183	1.6%	-89	-0.8%
72 Accommodation and food services	-1,507	-1.71%	2,071	2.40%	3,806	4.30%	2,456	2.7%	1,569	1.7%
81 Other services, except public administration	-44	-0.19%	333	1.46%	237	1.02%	576	2.5%	678	2.8%
99 Unclassified	-39	-28.89%	-27	-28.13%	-20	-28.99%	52	106.1%	111	109.9%

2001-2009 STATEWIDE ANNUAL AVERAGE EMPLOYMENT  
COMPARISON BY NAICS SECTOR

Industry	2006-2007 Difference	2006-2007 % Difference	2007-2008 Difference	2007-2008 % Difference	2008-2009 Difference	2008-2009 % Difference
<b>TOTAL, including Government</b>	<b>7,432</b>	<b>1.2%</b>	<b>-5,937</b>	<b>-0.95%</b>	<b>-27,709</b>	<b>-4.47%</b>
<b>TOTAL GOVERNMENT</b>	<b>1,151</b>	<b>1.0%</b>	<b>2,562</b>	<b>2.15%</b>	<b>989</b>	<b>0.81%</b>
Federal	-135	-0.4%	451	1.42%	1,130	3.51%
State	825	1.2%	1,516	2.19%	-279	-0.39%
County	460	2.6%	595	3.32%	138	0.74%
<b>Total , excluding government</b>	<b>6,281</b>	<b>1.3%</b>	<b>-8,499</b>	<b>-1.68%</b>	<b>-28,698</b>	<b>-5.76%</b>
<b>Goods Producing</b>	<b>2,500</b>	<b>4.3%</b>	<b>-1,488</b>	<b>-2.44%</b>	<b>-7,982</b>	<b>-13.42%</b>
11 Agriculture, forestry, fishing and hunting	-717	-9.8%	137	2.08%	-294	-4.37%
21 Mining	17	6.0%	24	7.95%	14	4.29%
23 Construction	3,077	8.6%	-1,265	-3.26%	-6,507	-17.33%
31-33 Manufacturing	123	0.8%	-385	-2.52%	-1,194	-8.02%
<b>Service Providing</b>	<b>3,782</b>	<b>0.9%</b>	<b>-7,011</b>	<b>-1.57%</b>	<b>-20,717</b>	<b>-4.72%</b>
22 Utilities	85	2.9%	67	2.22%	107	3.47%
42 Wholesale trade	482	2.7%	330	1.79%	-950	-5.06%
44-45 Retail trade	248	0.4%	-412	-0.59%	-3,340	-4.78%
48-49 Transportation and warehousing	133	0.4%	-3,553	-11.86%	-2,871	-10.87%
51 Information	-17	-0.2%	-653	-6.11%	-971	-9.67%
52 Finance and insurance	11	0.1%	-214	-1.27%	-449	-2.69%
53 Real estate and rental and leasing	145	1.1%	-478	-3.63%	-1,288	-10.14%
54 Professional and technical services	466	1.9%	465	1.89%	-419	-1.67%
55 Management of companies and enterprises	97	1.3%	-199	-2.61%	-424	-5.72%
56 Administrative and waste services	-2,648	-5.7%	-1,046	-2.38%	-3,068	-7.14%
61 Educational services	441	3.4%	553	4.16%	-98	-0.71%
62 Health care and social assistance	1,598	2.8%	722	1.24%	509	0.86%
71 Arts, entertainment, and recreation	521	4.5%	-438	-3.64%	-906	-7.81%
72 Accommodation and food services	1,620	1.7%	-2,534	-2.59%	-5,299	-5.55%
81 Other services, except public administration	525	2.1%	53	0.21%	-1,064	-4.21%
99 Unclassified	74	34.9%	324	113.29%	-184	-30.16%

**2008-2009**  
**Statewide Average Employment by Industry**



**1990-2009 Annual Average Wage by County**

	1990	1991	1992	1993	1994	1995	1996	1997	1998	1999	2000	2001	2002	2003	2004	2005	2006	2007	2008	2009
<b>State of Hawaii</b>																				
TOTAL, including Government	23,109	24,051	25,532	26,544	26,718	26,983	27,359	28,356	29,029	29,788	30,628	31,241	32,669	33,735	35,191	36,347	37,784	39,465	40,664	41,328
Total Government	26,837	27,730	29,451	31,484	30,999	31,169	31,345	33,846	34,432	36,246	36,480	37,024	39,387	40,692	41,698	43,839	45,789	48,118	49,682	50,887
Federal	29,088	29,485	32,052	33,991	34,475	33,216	34,257	40,580	41,990	42,533	45,973	47,088	50,775	52,229	54,066	56,720	57,661	61,405	61,870	63,542
State	24,995	26,077	27,365	29,837	28,632	29,059	28,794	29,756	30,173	32,442	31,408	31,742	33,714	34,826	35,264	37,308	39,621	41,391	43,269	44,057
County	28,275	30,034	31,709	32,675	33,142	34,930	34,829	36,008	36,008	38,750	38,105	39,033	40,952	42,310	44,449	46,187	48,277	50,569	52,989	54,076
TOTAL, excluding Government	22,235	23,180	24,581	25,322	25,647	25,930	26,366	26,978	27,661	28,155	29,179	29,802	30,943	31,966	33,576	34,558	35,901	37,436	38,466	38,836
<b>Honolulu County</b>																				
TOTAL, including Government	23,956	24,919	26,530	27,546	27,707	27,950	28,343	29,523	30,243	30,990	31,881	32,534	33,983	35,014	36,615	37,656	39,006	40,784	42,101	42,838
Total Government	26,849	27,689	29,486	31,773	31,058	31,106	31,315	34,089	34,743	36,344	36,878	37,399	39,799	40,983	41,908	44,003	45,762	48,093	49,546	50,833
Federal	29,123	29,507	32,058	34,011	34,502	33,166	34,161	40,621	42,150	42,670	46,340	47,267	51,162	52,779	54,540	57,301	58,209	61,977	62,507	64,255
State	24,604	25,713	26,984	29,955	28,251	28,622	28,309	29,199	29,585	31,668	30,658	30,995	32,844	33,765	34,064	35,997	38,051	39,752	41,525	42,180
County	28,748	30,440	32,426	33,256	33,663	35,739	35,643	36,870	36,862	39,556	39,110	40,140	41,965	43,150	45,534	46,918	49,076	51,161	53,752	55,227
TOTAL, excluding Government	23,210	24,198	25,748	26,419	26,803	27,096	27,545	28,282	29,007	29,513	30,525	31,202	32,335	33,338	35,153	35,974	37,241	38,871	40,093	40,564
<b>Hawaii County</b>																				
TOTAL, including Government	19,873	21,035	21,943	22,699	22,875	23,461	23,725	24,180	25,235	25,934	26,680	27,355	28,804	30,016	31,105	32,590	33,960	35,193	36,296	36,560
Total Government	26,593	27,726	29,010	30,339	30,884	31,497	31,414	32,696	32,862	35,408	34,883	35,615	37,827	39,566	40,874	43,410	45,760	48,020	49,883	50,623
Federal	27,891	27,569	30,846	33,357	33,441	33,270	35,456	39,092	38,989	39,999	40,811	44,245	45,064	45,867	48,655	50,362	51,460	54,250	54,354	54,717
State	26,598	27,598	29,006	29,981	30,379	30,880	30,559	31,763	32,126	34,915	34,156	34,567	36,917	38,647	39,591	41,927	44,690	46,745	49,050	49,904
County	26,034	28,157	28,324	30,259	31,461	32,705	32,307	32,810	32,500	34,960	34,446	35,266	37,495	39,282	41,006	44,615	46,273	48,905	50,203	50,760
TOTAL, excluding Government	18,473	19,619	20,341	20,896	20,902	21,448	21,852	22,147	23,360	23,617	24,742	25,425	26,683	27,820	28,950	30,280	31,488	32,536	33,267	33,128
<b>Maui County</b>																				
TOTAL, including Government	21,096	21,949	22,784	23,251	24,011	24,339	24,907	25,412	25,782	26,914	27,722	28,192	29,647	30,909	32,159	33,624	35,559	37,079	37,710	37,730
Total Government	27,011	28,130	29,517	30,600	30,630	31,329	31,593	32,834	33,373	36,165	34,853	35,480	37,594	39,290	40,676	42,726	45,790	48,182	50,094	50,866
Federal	29,386	31,159	33,596	35,968	35,168	34,395	35,752	38,126	37,055	38,798	38,426	42,859	42,631	42,508	45,902	46,754	48,707	54,245	53,532	54,366
State	26,289	27,162	28,358	29,437	29,441	30,174	30,324	31,406	32,149	35,003	33,615	33,892	36,265	38,057	39,118	41,575	45,112	47,008	48,862	49,984
County	28,164	29,883	31,456	32,214	32,543	33,441	33,651	35,064	35,490	38,423	36,997	37,641	39,660	41,324	42,875	44,219	46,445	48,958	51,804	51,715
TOTAL, excluding Government	20,337	21,114	21,854	22,205	23,033	23,289	23,896	24,282	24,636	25,547	26,694	27,148	28,443	29,632	30,923	32,329	34,126	35,536	35,877	35,535
<b>Kauai County</b>																				
TOTAL, including Government	19,633	20,516	22,219	24,949	24,213	24,003	24,141	24,793	24,884	25,635	26,378	26,844	28,072	29,049	29,897	31,390	33,254	35,430	36,191	37,269
Total Government	26,832	28,019	29,622	29,527	30,655	31,435	31,376	33,380	33,699	36,443	35,231	35,655	38,170	40,184	41,342	43,691	46,474	48,783	51,194	52,828
Federal	28,251	29,928	32,381	31,526	34,062	35,230	36,679	44,243	44,184	43,872	44,646	47,490	50,687	51,087	52,243	53,976	54,832	58,208	59,144	60,323
State	26,054	26,962	28,280	28,161	29,348	29,918	29,717	31,097	31,543	34,462	32,958	33,125	35,525	37,469	38,349	40,715	44,055	45,630	48,221	50,198
County	28,066	29,948	31,946	32,391	32,383	33,467	33,287	34,758	34,943	38,551	37,104	37,624	39,877	41,687	43,430	45,984	48,255	51,488	54,044	55,239
TOTAL, excluding Government	18,509	19,356	20,927	23,979	22,920	22,536	22,746	23,129	23,208	23,624	24,771	25,231	26,199	27,067	27,959	29,371	31,107	33,267	33,676	34,387

2001-2009 STATEWIDE ANNUAL AVERAGE WAGE  
COMPARISON BY NAICS SECTOR

Industry	2001 Average Wage	2002 Average Wage	2003 Average Wage	2004 Average Wage	2005 Average Wage	2006 Average Wage	2007 Average Wage	2008 Average Wage	2009 Average Wage
<b>TOTAL, including Government</b>	<b>31,241</b>	<b>32,669</b>	<b>33,735</b>	<b>35,191</b>	<b>36,347</b>	<b>37,784</b>	<b>39,465</b>	<b>40,664</b>	<b>41,328</b>
<b>TOTAL GOVERNMENT</b>	<b>37,024</b>	<b>39,387</b>	<b>40,692</b>	<b>41,698</b>	<b>43,839</b>	<b>45,789</b>	<b>48,118</b>	<b>49,682</b>	<b>50,887</b>
Federal	47,088	50,775	52,229	54,066	56,720	57,661	61,405	61,870	63,542
State	31,742	33,714	34,826	35,264	37,308	39,621	41,391	43,269	44,057
County	39,033	40,952	42,310	44,449	46,187	48,277	50,569	52,989	54,076
<b>Total , excluding government</b>	<b>29,802</b>	<b>30,943</b>	<b>31,966</b>	<b>33,576</b>	<b>34,558</b>	<b>35,901</b>	<b>37,436</b>	<b>38,466</b>	<b>38,836</b>
<b>Goods Producing</b>	<b>37,774</b>	<b>39,597</b>	<b>40,598</b>	<b>41,872</b>	<b>45,256</b>	<b>47,697</b>	<b>50,780</b>	<b>52,776</b>	<b>52,539</b>
11 Agriculture, forestry, fishing and hunting	24,140	24,730	25,238	25,094	26,747	28,325	29,567	30,538	31,136
21 Mining	57,952	63,784	67,557	79,544	86,724	86,503	81,906	82,014	77,845
23 Construction	47,089	49,112	49,549	50,970	54,378	56,413	59,297	62,056	62,745
31-33 Manufacturing	30,036	30,687	31,432	32,544	33,869	35,765	37,690	38,800	38,849
<b>Service Providing</b>	<b>28,818</b>	<b>29,875</b>	<b>30,885</b>	<b>32,522</b>	<b>33,163</b>	<b>34,341</b>	<b>35,611</b>	<b>36,527</b>	<b>37,148</b>
22 Utilities	65,866	66,404	70,667	73,453	72,231	75,159	75,757	78,380	80,366
42 Wholesale trade	38,052	38,952	40,485	42,400	43,318	45,013	47,273	48,001	48,167
44-45 Retail trade	21,968	22,752	23,988	24,569	25,033	25,981	26,779	27,038	27,381
48-49 Transportation and warehousing	36,035	36,614	36,273	36,316	36,195	35,800	38,289	40,479	40,268
51 Information	43,251	43,164	45,421	48,470	47,984	53,121	53,534	54,979	55,919
52 Finance and insurance	46,482	50,719	50,943	54,199	55,203	56,201	56,341	56,485	56,671
53 Real estate and rental and leasing	30,515	32,206	34,392	36,987	39,017	40,259	41,479	40,562	40,248
54 Professional and technical services	45,458	47,459	49,523	51,218	55,396	57,766	60,360	61,909	62,491
55 Management of companies and enterprises	55,309	60,257	60,715	84,163	71,694	69,872	71,940	71,803	71,200
56 Administrative and waste services	21,929	22,982	24,074	25,546	26,259	27,022	28,119	29,267	30,256
61 Educational services	28,885	28,666	29,173	30,328	30,591	31,869	32,774	34,047	35,500
62 Health care and social assistance	35,049	35,572	36,698	38,173	39,187	40,640	41,703	43,753	45,824
71 Arts, entertainment, and recreation	19,261	19,719	20,449	21,214	22,012	23,218	24,162	26,138	26,280
72 Accommodation and food services	19,964	20,650	21,513	22,778	23,491	24,674	25,693	25,737	25,310
81 Other services, except public administration	22,968	23,643	24,206	25,131	26,077	27,128	28,195	29,072	29,500
99 Unclassified	33,969	38,834	44,100	32,779	50,129	50,544	60,794	43,163	49,084

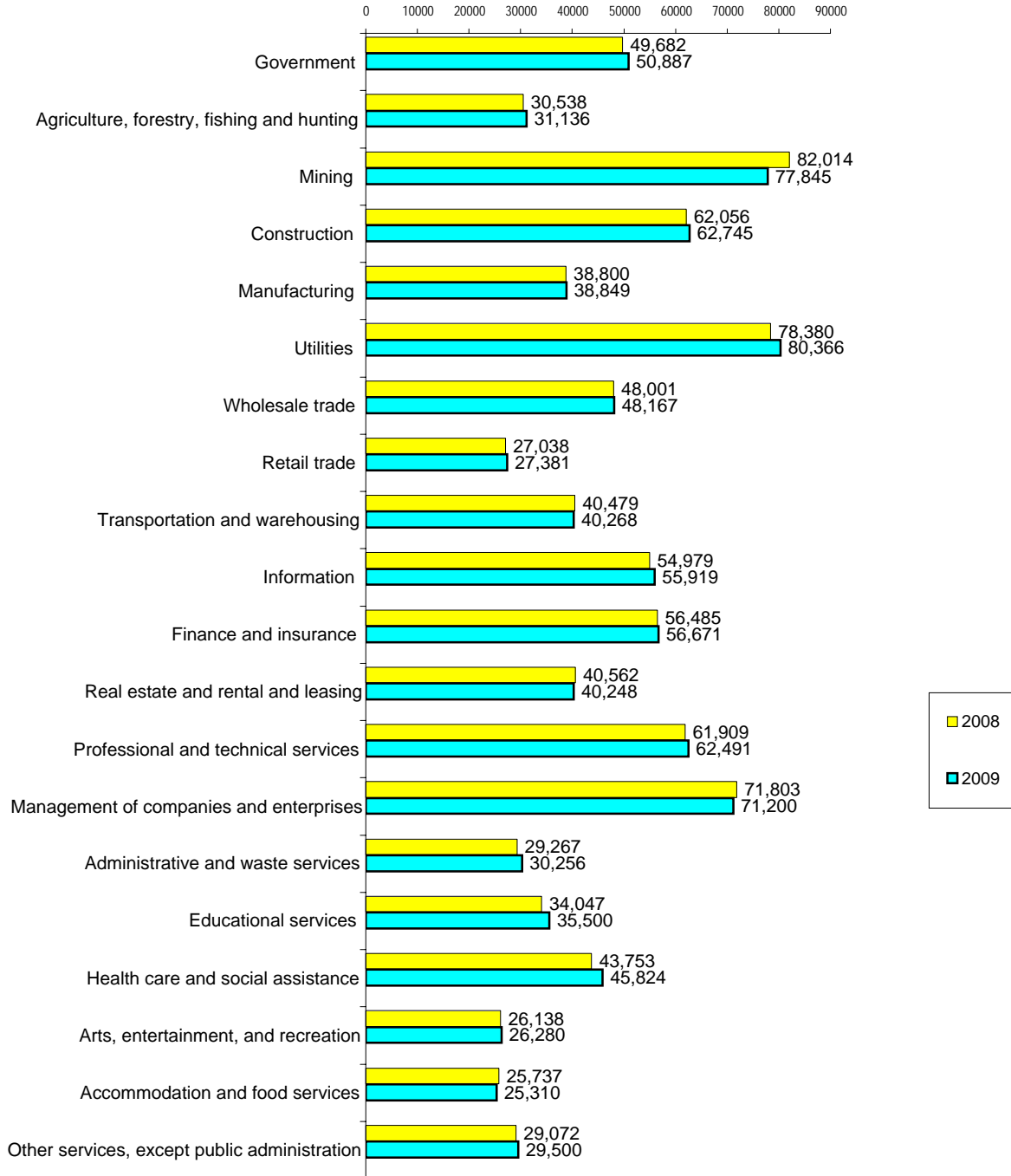
2001-2009 STATEWIDE ANNUAL AVERAGE WAGE  
COMPARISON BY NAICS SECTOR

Industry	2001-2002 Difference	2001-2002 % Difference	2002-2003 Difference	2002-2003 % Difference	2003-2004 Difference	2003-2004 % Difference	2004-2005 Difference	2004-2005 % Difference
<b>TOTAL, including Government</b>	<b>1,428</b>	<b>4.57%</b>	<b>1,066</b>	<b>3.26%</b>	<b>1,456</b>	<b>4.32%</b>	<b>1,156</b>	<b>3.3%</b>
<b>TOTAL GOVERNMENT</b>	<b>2,363</b>	<b>6.38%</b>	<b>1,305</b>	<b>3.31%</b>	<b>1,006</b>	<b>2.47%</b>	<b>2,141</b>	<b>5.1%</b>
Federal	3,687	7.83%	1,454	2.86%	1,837	3.52%	2,654	4.9%
State	1,972	6.21%	1,112	3.30%	438	1.26%	2,044	5.8%
County	1,919	4.92%	1,358	3.32%	2,139	5.06%	1,738	3.9%
<b>Total , excluding government</b>	<b>1,141</b>	<b>3.83%</b>	<b>1,023</b>	<b>3.31%</b>	<b>1,610</b>	<b>5.04%</b>	<b>982</b>	<b>2.9%</b>
<b>Goods Producing</b>	<b>1,823</b>	<b>4.83%</b>	<b>1,001</b>	<b>2.53%</b>	<b>1,274</b>	<b>3.14%</b>	<b>3,384</b>	<b>8.1%</b>
11 Agriculture, forestry, fishing and hunting	590	2.44%	508	2.05%	-144	-0.57%	1,653	6.6%
21 Mining	5,832	10.06%	3,773	5.92%	11,987	17.74%	7,180	9.0%
23 Construction	2,023	4.30%	437	0.89%	1,421	2.87%	3,408	6.7%
31-33 Manufacturing	651	2.17%	745	2.43%	1,112	3.54%	1,325	4.1%
<b>Service Providing</b>	<b>1,057</b>	<b>3.67%</b>	<b>1,010</b>	<b>3.38%</b>	<b>1,637</b>	<b>5.30%</b>	<b>641</b>	<b>2.0%</b>
22 Utilities	538	0.82%	4,263	6.42%	2,786	3.94%	-1,222	-1.7%
42 Wholesale trade	900	2.37%	1,533	3.94%	1,915	4.73%	918	2.2%
44-45 Retail trade	784	3.57%	1,236	5.43%	581	2.42%	464	1.9%
48-49 Transportation and warehousing	579	1.61%	-341	-0.93%	43	0.12%	-121	-0.3%
51 Information	-87	-0.20%	2,257	5.23%	3,049	6.71%	-486	-1.0%
52 Finance and insurance	4,237	9.12%	224	0.44%	3,256	6.39%	1,004	1.9%
53 Real estate and rental and leasing	1,691	5.54%	2,186	6.79%	2,595	7.55%	2,030	5.5%
54 Professional and technical services	2,001	4.40%	2,064	4.35%	1,695	3.42%	4,178	8.2%
55 Management of companies and enterprises	4,948	8.95%	458	0.76%	23,448	38.62%	-12,469	-14.8%
56 Administrative and waste services	1,053	4.80%	1,092	4.75%	1,472	6.11%	713	2.8%
61 Educational services	-219	-0.76%	507	1.77%	1,155	3.96%	263	0.9%
62 Health care and social assistance	523	1.49%	1,126	3.17%	1,475	4.02%	1,014	2.7%
71 Arts, entertainment, and recreation	458	2.38%	730	3.70%	765	3.74%	798	3.8%
72 Accommodation and food services	686	3.44%	863	4.18%	1,265	5.88%	713	3.1%
81 Other services, except public administration	675	2.94%	563	2.38%	925	3.82%	946	3.8%
99 Unclassified	4,865	14.32%	5,266	13.56%	-11,321	-25.67%	17,350	52.9%

2001-2009 STATEWIDE ANNUAL AVERAGE WAGE  
COMPARISON BY NAICS SECTOR

Industry	2005-2006 Difference	2005-2006 % Difference	2006-2007 Difference	2006-2007 % Difference	2007-2008 Difference	2007-2008 % Difference	2008-2009 Difference	2008-2009 % Difference
<b>TOTAL, including Government</b>	<b>1,437</b>	<b>4.0%</b>	<b>1,681</b>	<b>4.4%</b>	<b>1,199</b>	<b>3.04%</b>	<b>664</b>	<b>1.61%</b>
<b>TOTAL GOVERNMENT</b>	<b>1,950</b>	<b>4.4%</b>	<b>2,329</b>	<b>5.1%</b>	<b>1,564</b>	<b>3.25%</b>	<b>1,205</b>	<b>2.37%</b>
Federal	941	1.7%	3,744	6.5%	465	0.76%	1,672	2.63%
State	2,313	6.2%	1,770	4.5%	1,878	4.54%	788	1.79%
County	2,090	4.5%	2,292	4.7%	2,420	4.79%	1,087	2.01%
<b>Total , excluding government</b>	<b>1,343</b>	<b>3.9%</b>	<b>1,535</b>	<b>4.3%</b>	<b>1,030</b>	<b>2.75%</b>	<b>370</b>	<b>0.95%</b>
<b>Goods Producing</b>	<b>2,441</b>	<b>5.4%</b>	<b>3,083</b>	<b>6.5%</b>	<b>1,996</b>	<b>3.93%</b>	<b>-237</b>	<b>-0.45%</b>
11 Agriculture, forestry, fishing and hunting	1,578	5.9%	1,242	4.4%	971	3.28%	598	1.92%
21 Mining	-221	-0.3%	-4,597	-5.3%	108	0.13%	-4,169	-5.36%
23 Construction	2,035	3.7%	2,884	5.1%	2,759	4.65%	689	1.10%
31-33 Manufacturing	1,896	5.6%	1,925	5.4%	1,110	2.95%	49	0.13%
<b>Service Providing</b>	<b>1,178</b>	<b>3.6%</b>	<b>1,270</b>	<b>3.7%</b>	<b>916</b>	<b>2.57%</b>	<b>621</b>	<b>1.67%</b>
22 Utilities	2,928	4.1%	598	0.8%	2,623	3.46%	1,986	2.47%
42 Wholesale trade	1,695	3.9%	2,260	5.0%	728	1.54%	166	0.34%
44-45 Retail trade	948	3.8%	798	3.1%	259	0.97%	343	1.25%
48-49 Transportation and warehousing	-395	-1.1%	2,489	7.0%	2,190	5.72%	-211	-0.52%
51 Information	5,137	10.7%	413	0.8%	1,445	2.70%	940	1.68%
52 Finance and insurance	998	1.8%	140	0.2%	144	0.26%	186	0.33%
53 Real estate and rental and leasing	1,242	3.2%	1,220	3.0%	-917	-2.21%	-314	-0.78%
54 Professional and technical services	2,370	4.3%	2,594	4.5%	1,549	2.57%	582	0.93%
55 Management of companies and enterprises	-1,822	-2.5%	2,068	3.0%	-137	-0.19%	-603	-0.85%
56 Administrative and waste services	763	2.9%	1,097	4.1%	1,148	4.08%	989	3.27%
61 Educational services	1,278	4.2%	905	2.8%	1,273	3.88%	1,453	4.09%
62 Health care and social assistance	1,453	3.7%	1,063	2.6%	2,050	4.92%	2,071	4.52%
71 Arts, entertainment, and recreation	1,206	5.5%	944	4.1%	1,976	8.18%	142	0.54%
72 Accommodation and food services	1,183	5.0%	1,019	4.1%	44	0.17%	-427	-1.69%
81 Other services, except public administration	1,051	4.0%	1,067	3.9%	877	3.11%	428	1.45%
99 Unclassified	415	0.8%	10,250	20.3%	-17,631	-29.00%	5,921	12.06%

**2008-2009**  
**Statewide Annual Average Wage by Industry**





REPORTING UNITS AND EMPLOYMENT BY SIZE OF FIRM

-Excluding Government- (Based on December 2009 Employment)

		TOTAL	0-4	5-9	10-19	20-49	50-99	100-249	250-499	500-999	1000+
STATEWIDE	- Reporting Units	37,540	21,991	6,732	4,356	2,788	996	480	136	44	17
	Employment	469,701	33,502	44,557	58,551	84,493	67,840	72,211	47,574	29,237	31,736
HONOLULU	- Reporting Units	25,456	14,855	4,457	2,950	1,958	754	340	91	35	16
	Employment	339,184	22,505	29,485	39,709	59,341	51,748	51,227	31,543	23,036	30,590
HAWAII	- Reporting Units	4,997	2,971	956	595	307	95	54	16	3	
	Employment	50,191	4,517	6,329	7,906	9,241	6,226	8,170	5,722	2,080	
MAUI	- Reporting Units	4,913	2,901	899	564	364	98	57	24	<b>6*</b>	
	Employment	56,473	4,489	5,897	7,572	10,966	6,629	8,373	8,146	<b>4,401*</b>	
KAUAI	- Reporting Units	2,174	1,264	420	247	159	49	29	<b>6*</b>		
	Employment	23,853	1,991	2,846	3,364	4,945	3,237	4,441	<b>3,029*</b>		
NATURAL RESOURCES AND MINING	- Reporting Units	483	243	98	81	37	9	12	3		
	Employment	6,903	368	670	1,083	999	598	1,958	1,227		
CONSTRUCTION	- Reporting Units	3,582	2,261	607	381	239	61	30	3		
	Employment	29,098	2,917	4,021	5,134	7,195	4,057	4,604	1,170		
MANUFACTURING	- Reporting Units	1,012	506	181	166	105	33	16	5		
	Employment	13,560	836	1,217	2,218	3,137	2,262	2,580	1,310		
WHOLESALE TRADE	- Reporting Units	2,190	1,369	366	235	165	40	<b>15*</b>			
	Employment	17,644	2,150	2,424	3,123	4,919	2,616	<b>2,412*</b>			
RETAIL TRADE	- Reporting Units	4,583	2,096	1,185	665	365	160	80	27	<b>5*</b>	
	Employment	68,733	4,014	7,850	8,838	11,132	11,374	11,697	9,653	<b>4,175*</b>	
TRANSPORTATION AND UTILITIES	- Reporting Units	1,097	512	204	151	128	56	27	13	<b>6*</b>	
	Employment	26,453	714	1,345	2,099	3,768	3,661	4,305	3,942	<b>6,619*</b>	
INFORMATION	- Reporting Units	686	433	90	67	60	22	11	<b>3*</b>		
	Employment	8,915	524	603	901	1,947	1,507	1,568	<b>1,865*</b>		
FINANCE AND INSURANCE	- Reporting Units	1,710	1,073	320	196	71	29	16	<b>5*</b>		
	Employment	16,059	1,735	2,174	2,514	2,169	2,126	2,258	<b>3,083*</b>		

REPORTING UNITS AND EMPLOYMENT BY SIZE OF FIRM

-Excluding Government- (Based on December 2009 Employment)

		TOTAL	0-4	5-9	10-19	20-49	50-99	100-249	250-499	500-999	1000+
REAL ESTATE AND RENTAL AND LEASING	- Reporting Units	1,899	1,371	301	124	62	29	12			
	Employment	11,478	2,199	1,968	1,605	1,953	1,996	1,757			
PROFESSIONAL AND TECHNICAL SERVICES	- Reporting Units	4,240	3,088	569	331	178	57	<b>17*</b>			
	Employment	24,768	4,247	3,706	4,411	5,388	3,816	<b>3,200*</b>			
MANAGEMENT OF COMPANIES AND ENTERPRISES	- Reporting Units	426	223	70	59	45	18	<b>11*</b>			
	Employment	6,838	353	475	813	1,415	1,281	<b>2,501*</b>			
ADMINISTRATIVE AND WASTE SERVICES	- Reporting Units	2,359	1,496	325	221	160	83	53	15	<b>6*</b>	
	Employment	40,366	1,990	2,091	3,006	4,763	5,805	8,586	5,127	<b>8,998*</b>	
EDUCATIONAL SERVICES	- Reporting Units	713	413	95	80	78	21	18	4	<b>4*</b>	
	Employment	13,856	527	658	1,115	2,378	1,362	2,718	1,457	<b>3,641*</b>	
HEALTH CARE AND SOCIAL ASSISTANCE	- Reporting Units	3,610	1,833	926	441	234	82	60	20	9	5
	Employment	60,289	3,527	6,062	5,814	7,131	5,613	9,223	7,150	6,255	9,514
ARTS, ENTERTAINMENT AND RECREATION	- Reporting Units	579	312	97	53	70	22	21	<b>4*</b>		
	Employment	10,463	437	628	725	2,330	1,513	3,010	<b>1,820*</b>		
ACCOMODATION AND FOOD SERVICES	- Reporting Units	3,645	1,189	684	779	637	242	68	27	15	4
	Employment	89,494	2,022	4,622	10,732	19,503	16,111	9,870	10,274	10,156	6,204
OTHER SERVICES, EXCEPT PUBLIC ADMINISTRATION	- Reporting Units	3,798	2,654	609	323	153	32	22	5		
	Employment	24,212	4,467	4,015	4,381	4,336	2,142	3,197	1,674		
UNCLASSIFIED	- Reporting Units	928	919	<b>9*</b>							
	Employment	572	475	<b>97*</b>							

\* Data from larger classes were combined to prevent the disclosure of confidential information.

NOTE: Multi-establishment employers are counted for each worksite reported, except for the construction industry, which reports separately only for major projects. Some worksites are further distributed by industrial classification.

EMPLOYERS AND EMPLOYMENT BY SIZE OF EMPLOYER

-Excluding Government- (Based on December 2009 Employment)

		TOTAL	0-4	5-9	10-19	20-49	50-99	100-249	250-499	500-999	1000+
STATEWIDE	- Employer Units	31,056	19,361	5,146	3,077	2,016	752	463	135	64	42
	Employment	469,701	28,611	33,841	41,442	61,247	51,559	71,977	47,362	45,893	87,769
HONOLULU	- Employer Units	21,917	13,556	3,584	2,160	1,480	580	360	109	49	39
	Employment	368,933	20,124	23,515	29,148	45,138	40,028	55,739	37,986	34,704	82,551
HAWAII	- Employer Units	3,802	2,431	669	390	194	67	40	6	5	
	Employment	35,867	3,507	4,410	5,172	5,765	4,376	6,362	2,149	4,126	
MAUI	- Employer Units	3,776	2,420	613	366	240	69	43	14	8	3
	Employment	46,742	3,542	4,037	4,929	7,171	4,745	6,768	4,755	5,577	5,218
KAUAI	- Employer Units	1,561	954	280	161	102	36	20	<b>8*</b>		
	Employment	18,159	1,438	1,879	2,193	3,173	2,410	3,108	<b>3,958*</b>		
NATURAL RESOURCES AND MINING	- Employer Units	427	210	91	75	31	8	<b>12*</b>			
	Employment	6,972	343	621	1,004	799	517	<b>3,688*</b>			
CONSTRUCTION	- Employer Units	3,129	1,942	545	325	221	60	31	<b>5*</b>		
	Employment	28,084	2,514	3,637	4,385	6,610	4,046	4,954	<b>1,938*</b>		
MANUFACTURING	- Employer Units	933	476	163	159	84	25	19	<b>7*</b>		
	Employment	13,387	779	1,092	2,135	2,512	1,647	2,986	<b>2,236*</b>		
WHOLESALE TRADE	- Employer Units	1,933	1,235	307	195	138	34	<b>24*</b>			
	Employment	17,046	1,858	2,010	2,613	4,133	2,188	<b>4,244*</b>			
RETAIL TRADE	- Employer Units	3,121	1,668	660	364	248	78	67	17	9	10
	Employment	70,205	2,961	4,375	4,901	7,637	5,501	10,701	6,256	7,318	20,555
TRANSPORTATION AND UTILITIES	- Employer Units	857	429	155	107	77	47	19	15	4	4
	Employment	25,903	561	1,005	1,495	2,300	3,233	2,882	4,872	2,290	7,265
INFORMATION	- Employer Units	516	361	58	32	32	13	15	<b>5*</b>		
	Employment	8,899	421	393	422	966	855	2,130	<b>3,712*</b>		
FINANCE AND INSURANCE	- Employer Units	1,079	780	121	72	50	27	21	3	<b>5*</b>	
	Employment	18,266	1,188	801	962	1,546	1,978	2,885	883	<b>8,023*</b>	
REAL ESTATE AND RENTAL AND LEASING	- Employer Units	1,632	1,236	220	91	47	24	11	<b>3*</b>		
	Employment	11,306	1,920	1,421	1,188	1,500	1,697	1,867	<b>1,713*</b>		

EMPLOYERS AND EMPLOYMENT BY SIZE OF EMPLOYER

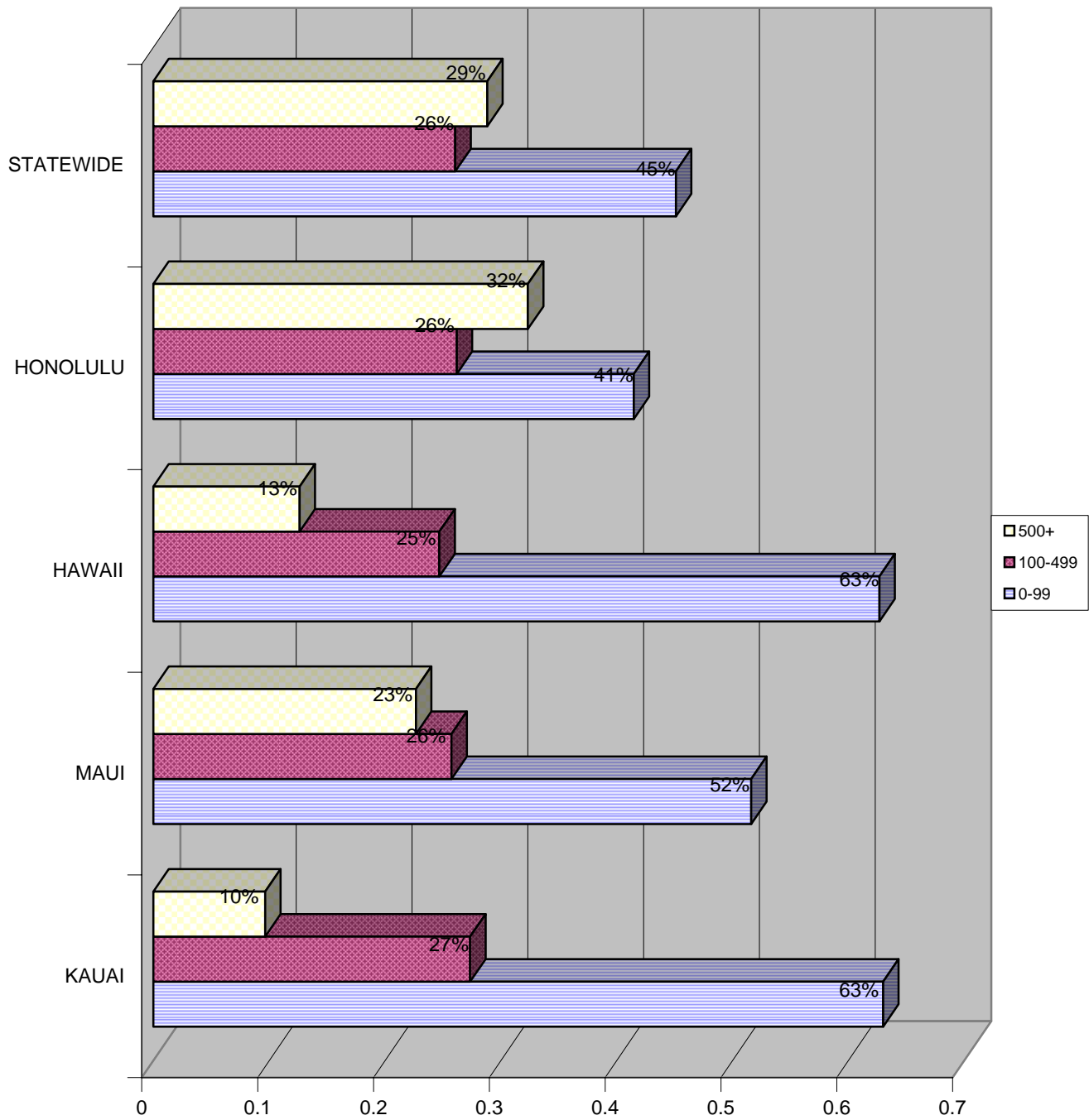
-Excluding Government- (Based on December 2009 Employment)

		TOTAL	0-4	5-9	10-19	20-49	50-99	100-249	250-499	500-999	1000+
PROFESSIONAL AND TECHNICAL SERVICES	- Employer Units	3,929	2,905	505	291	156	51	16	5		
	Employment	23,257	3,947	3,279	3,899	4,718	3,453	2,399	1,562		
MANAGEMENT OF COMPANIES AND ENTERPRISES	- Employer Units	192	139	21	19	9	<b>4*</b>				
	Employment	1,918	173	145	268	340	<b>992*</b>				
ADMINISTRATIVE AND WASTE SERVICES	- Employer Units	2,113	1,358	284	187	135	75	50	13	8	3
	Employment	47,289	1,757	1,806	2,588	3,975	5,255	7,959	4,348	4,974	14,627
EDUCATIONAL SERVICES	- Employer Units	582	310	86	68	73	21	16	4	4	
	Employment	15,280	402	592	941	2,248	1,398	2,417	1,416	5,866	
HEALTH CARE AND SOCIAL ASSISTANCE	- Employer Units	2,922	1,586	754	277	130	76	55	26	12	6
	Employment	60,587	3,031	4,867	3,548	4,071	5,529	8,538	9,350	8,474	13,179
ARTS, ENTERTAINMENT AND RECREATION	- Employer Units	502	275	80	49	56	18	21	3		
	Employment	8,956	376	520	682	1,879	1,277	3,019	1,203		
ACCOMODATION AND FOOD SERVICES	- Employer Units	2,840	1,090	569	497	391	165	68	30	20	10
	Employment	89,349	1,844	3,828	6,757	12,068	10,933	10,502	11,369	14,352	17,696
OTHER SERVICES, EXCEPT PUBLIC ADMINISTRATION	- Employer Units	3,421	2,442	522	266	137	27	22	<b>5*</b>		
	Employment	22,425	4,061	3,421	3,615	3,915	1,869	3,308	<b>2,236*</b>		
UNCLASSIFIED	- Employer Units	928	919	<b>9*</b>							
	Employment	572	475	<b>97*</b>							

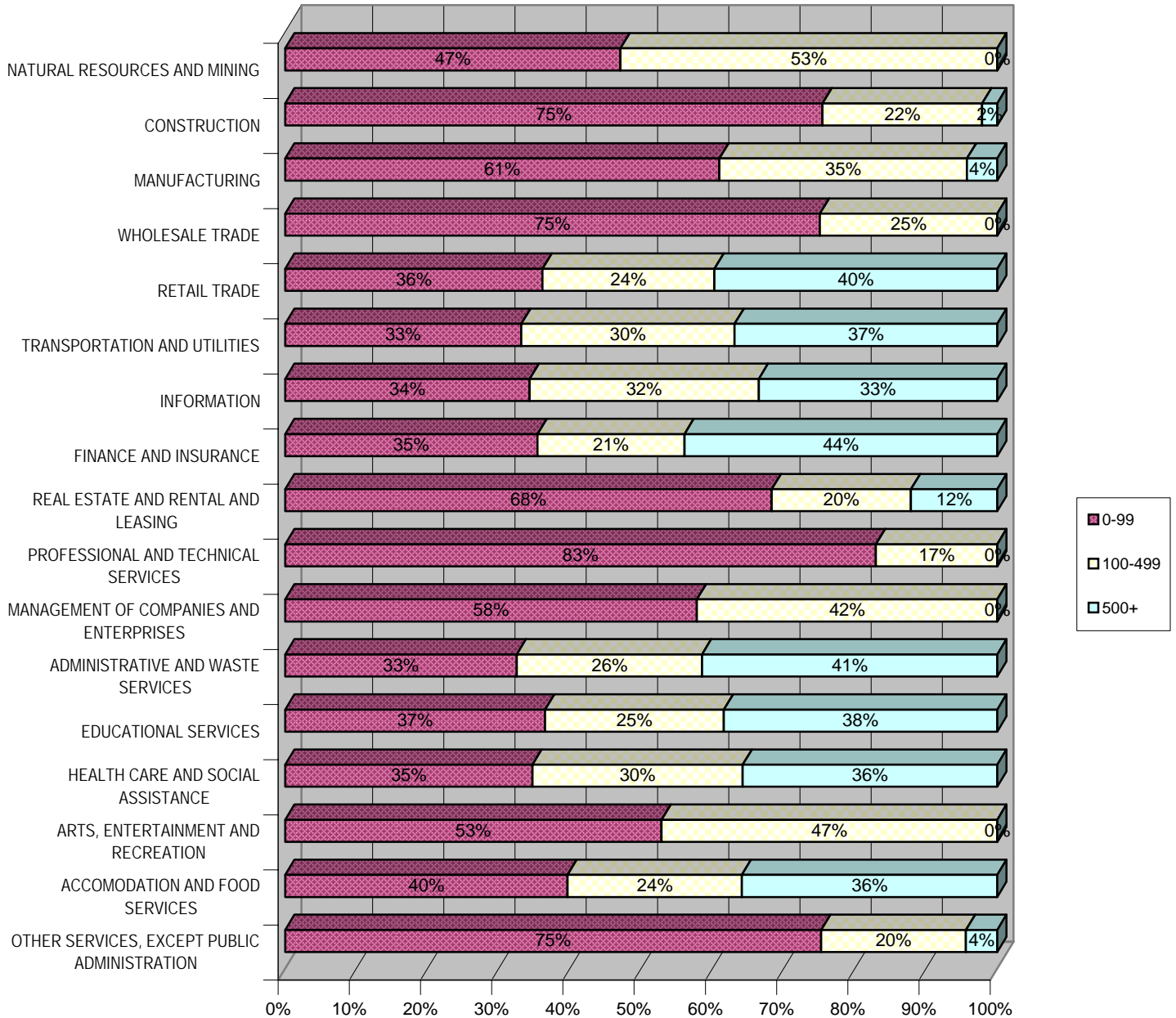
\* Data from larger classes were combined to prevent the disclosure of confidential information.

NOTE: An employer unit may include more than one worksite. For example, a retail company with five stores would be counted for each store under reporting units, but only once under employer units at the primary location. Thus, employer units tend to consolidate employment in Honolulu County.

## DISTRIBUTION OF EMPLOYMENT BY SIZE OF EMPLOYER BY COUNTY



## DISTRIBUTION OF EMPLOYMENT BY SIZE OF EMPLOYER BY INDUSTRY



## NAICS SECTORS & DESCRIPTIONS

NAICS classifies all economic activities into 20 sectors. The NAICS sectors, their two-digit codes, and the distinguishing activities of each are:

**11 Agriculture, Forestry, Fishing and Hunting**—Activities of this sector are growing crops, raising animals, harvesting timber, and harvesting fish and other animals from farms, ranches, or the animals' natural habitats.

**21 Mining**—Activities of this sector are extracting naturally occurring mineral solids, such as coal and ore; liquid minerals, such as crude petroleum; and gases, such as natural gas; and beneficiating (e.g., crushing, screening, washing, and flotation) and other preparation at the mine site, or as part of mining activity.

**22 Utilities**—Activities of this sector are generating, transmitting, and/or distributing electricity, gas, steam, and water and removing sewage through a permanent infrastructure of lines, mains, and pipe.

**23 Construction**—Activities of this sector are erecting buildings and other structures (including additions); heavy construction other than buildings; and alterations, reconstruction, installation, and maintenance and repairs.

**31-33 Manufacturing**—Activities of this sector are the mechanical, physical, or chemical transformation of material, substances, or components into new products.

**42 Wholesale Trade**—Activities of this sector are selling or arranging for the purchase or sale of goods for resale; capital or durable nonconsumer goods; and raw and intermediate materials and supplies used in production, and providing services incidental to the sale of the merchandise. The merchandise described in this sector includes the outputs of agriculture, mining, manufacturing, and certain information industries, such as publishing. This sector comprises two main types of wholesalers: merchant wholesalers that sell goods on their own account and business to business electronic markets, agents, and brokers that arrange sales and purchases for others generally for a commission or fee.

**44-45 Retail Trade**—Activities of this sector are retailing merchandise generally in small quantities to the general public and providing services incidental to the sale of the merchandise.

**48-49 Transportation and Warehousing**—Activities of this sector are providing transportation of passengers and cargo, warehousing and storing goods, scenic and sightseeing transportation, and supporting these activities. Establishments in these industries use transportation equipment or transportation related facilities as a productive asset. The modes of transportation are air, rail, water, road, and pipeline. Warehousing establishments in this sector are distinguished from merchant wholesaling in that the warehouse establishments do not sell the goods.

**51 Information**—Activities of this sector are: (a) producing and distributing information and cultural products, (b) providing the means to transmit or distribute these products as well as data or communications, and (c) processing data. The main components of this sector are the publishing industries, including software publishing, the motion picture and sound recording industries, the broadcasting and telecommunications industries, and the information services and data processing industries.

**52 Finance and Insurance**—Activities of this sector involve the creation, liquidation, or change in ownership of financial assets (financial transactions) and/or facilitating financial transactions.

**53 Real Estate and Rental and Leasing**—Activities of this sector are renting, leasing, or otherwise allowing the use of tangible or intangible assets, and establishments providing related services. The major portion of this sector comprises establishments that rent, lease, or otherwise allow the use of their own assets by others. Included in this sector are establishments that provide a wide array of tangible goods, such as automobiles, computers, consumer goods, and industrial machinery and equipment, to consumers in return for a periodic rental or lease payment. This sector also includes establishments primarily engaged in managing real estate for others, selling, renting and/or buying real estate for others, and appraising real estate.

**54 Professional, Scientific, and Technical Services**—Activities of this sector are performing professional, scientific, and technical services for the operations of other organizations. These activities require a high degree of expertise and training. The establishments in this sector specialize according to expertise and provide these services to clients in a variety of industries and, in some cases, to households.

**55 Management of Companies and Enterprises**—Activities of this sector are the holding of securities of companies and enterprises, for the purpose of owning controlling interest or influencing their management decision, or administering, overseeing, and managing other establishments of the same company or enterprise and normally undertaking the strategic or organizational planning and decision-making of the company or enterprise. Establishments that administer, oversee, and manage may hold the securities of the company or enterprise.

**56 Administrative and Support and Waste Management and Remediation Services**—Activities of this sector are performing routine support activities for the day-to-day operations of other organizations. These essential activities are often undertaken in-house by establishments in many sectors of the economy. The establishments in this sector specialize in one or more of these support activities and provide these services to clients in a variety of industries and, in some cases, to households. Activities performed include: office administration, hiring and placing of personnel, solicitation, collection, security and surveillance services, cleaning, and waste disposal services. The industries in this sector cannot be viewed as strictly support. The Travel Arrangement and Reservation Services industry includes travel agents, tour operators, and providers of other travel arrangement services, such as hotel and restaurant reservations and arranging the purchase of tickets, serves many clients, including individual consumers. This group was placed in this sector because services are often of the “support” nature and businesses and other organizations are increasingly the ones purchasing such services.

**61 Educational Services**—Activities of this sector are providing instruction and training in a wide variety of subjects. This instruction and training is provided by specialized establishments, such as schools, colleges, universities, and training centers.

**62 Health Care and Social Assistance**—Activities of this sector are providing health care and social assistance for individuals. The services provided by establishments in this sector are delivered by trained professionals. All industries in the sector share this commonality of process, namely, labor inputs of health practitioners or social workers with the requisite expertise. Many of the industries in the sector are defined based on the educational degree held by the practitioners included in the industry.

**71 Arts, Entertainment, and Recreation**—Activities of this sector are operating or providing services to meet varied cultural, entertainment, and recreational interests of their patrons. This sector comprises (1) establishments that are involved in producing, promoting, or participating in live performances, events, or exhibits intended for public viewing; (2) establishments that preserve and exhibit objects and sites of historical, cultural, or educational interest; and (3) establishments that operate facilities or provide services that enable patrons to participate in recreational activities or pursue amusement, hobby, and leisure time interests.

**72 Accommodation and Food Services**—Activities of this sector are providing customers with lodging and/or preparing meals, snacks, and beverages for immediate consumption.

**81 Other Services (except Public Administration)**—Activities of this sector are providing services not elsewhere specified, including repairs, religious activities, grantmaking, advocacy, laundry, personal care, death care, and other personal services. Establishments in this sector are primarily engaged in activities, such as equipment and machinery repairing, promoting or administering religious activities, grantmaking, advocacy, and providing drycleaning and laundry services, personal care services, death care services, pet care services, photofinishing services, temporary parking services, and dating services. Private households that engage in employing workers on or about the premises in activities primarily concerned with the operation of the household are included in this sector.

**92 Public Administration**—Activities of this sector are administration, management, and oversight of public programs by Federal, State, and local governments.



## Technical Notes

The data in this Employment and Payrolls series is compiled as a by-product of a federally required report, the Quarterly Census of Employment and Wages Program (commonly referred to as QCEW program and formerly known as ES-202). The QCEW program summarizes employer contribution reports which are submitted quarterly by employers subject to Unemployment Insurance under Hawai'i Employment Security Law and Unemployment Compensation for Federal Employees (UCFE). Subject employers include Federal, State, and County governments in addition to private industry employers. Only civilian employment data covered by UCFE is reported in the QCEW and federal government installations with less than 100 employees are not required to report.

Beginning with the release of data for 2001, the QCEW program introduced the 2002 version of the North American Industry Classification System (NAICS) as the basis for the assignment and tabulation of economic data by industry. NAICS is the product of a cooperative effort on the part of the statistical agencies of the United States, Canada, and Mexico. Previous reports in this series on covered employment and wage data which date back to 1951 were tabulated based on the Standard Industrial Classification (SIC) industry coding system. Due to the differences between the NAICS and SIC structures, data for 2001 will not be comparable with the SIC-based data for earlier years. Commencing with the release of data for 2007, the QCEW program will be using the 2007 version of North American Industry Classification System (NAICS) as the basis for the assignment and tabulation of economic data by industry. NAICS 2007 includes revisions to NAICS 2002 across several sectors. The most significant revisions are in the Information Sectors particularly within the Telecommunications area.

NAICS uses a hierarchical structure. It uses a six-digit classification code that allows greater flexibility in the coding structure. The first two digits of the six digit code designate the highest level of aggregation, with 20 such two-industry sectors. Three NAICS sectors include more than one 2-digit identifiers. Manufacturing includes codes 31-33, Retail trade comprises 44-45, and Transportation and warehousing encompasses 48-49. The third digit represents the subsector. The fourth digit of the NAICS code represents the industry group level. The fifth digit in the NAICS code represents the international-industry level. In most cases, there will be comparability between classifications of the United States, Canada, and Mexico at the five-digit level. The sixth digit designates national detail. This allows the flexibility to create more in depth statistics for the industries that hold particular importance in each country. Most six digit industries end in a zero, thus signifying that there is no additional detail below the five digits. However, some six-digit industries end in a number other than zero, meaning that the fifth digit was split into two or more U.S. industries.<sup>i</sup> (Due to confidentiality issues in the Hawaii data tabulations, this six digit level detail is only visible in the Accommodation and Food Services Sector.) In addition to the new groups, or sectors, created by the NAICS Manual, the Bureau of Labor Statistics (BLS) and its partner agencies have further assembled NAICS sectors, extending the sector structure upwards. These extensions aggregate the individual NAICS sectors into supersectors, and above this supersector level are two more aggregations, the commonly used domain known as *goods-producing* and *service-providing*. Domains and supersectors will be used when sufficient data do not exist to publish at the sector level.<sup>ii</sup> For detailed NAICS descriptions, see the NAICS manual and tables available on the U.S. Census website at <http://www.census.gov/epcd/www/naics.html>.

The four counties in this series are Honolulu (O'ahu), Hawai'i, Maui (Moloka'i, Lana'i, Maui), and Kaua'i. Employers with unidentified physical locations have been combined in Honolulu County for reporting purposes. In particular, motion picture and television film production, which may change location from one project to another or within a single project, has been included in Honolulu County when a location is not identified. Prior to 1982, distribution of Federal wages by county was not available.

Employment reflects the number of employees who worked for employers subject to Unemployment Insurance, technically referred to as covered employment. It represents all full-time and part-time employees who worked during or received pay for the payroll period including the twelfth of each month. Persons on the payrolls of more than one establishment during the same reference week are counted for each establishment. Due to rounding in the computation of averages, individual data may not add up to the totals. Wages include all remuneration paid to covered civilian workers. Pay differences between industries may reflect hours of work and other factors such as seasonality. For example, average annual wages for retail trade is affected by the relatively large percentage of part-time workers. Average annual wages are computed by dividing total wages by the corresponding average annual employment.

Beginning in 1991, employment and wage data in this series was collected at the establishment level. Previously, employment and wage data was collected at the county level. Employment and wage data of employers with multiple worksites or engaged in more than one type of activity by industrial classification are distributed by supplementary statistical reports, primarily the Multiple Worksite Report, submitted by such multi-establishment employers. The data are further supplemented by other information from telephone contacts and correspondence.

"Reporting units" is a count of all reporting employer establishments. However, some multi-establishment employers are counted only once, and some, which have been distributed by worksite and industrial classification, are counted for each worksite and industry group. Some of the fluctuation in reporting units from year to year may be attributable to breakouts and consolidation of worksite and industry establishments. Multi-establishment employers are counted for each worksite, except for the construction industry, which reports separately only for major projects. "Employer Units" presented in the table of Employers and Employment by Size of Employer is the count of employers as registered with Unemployment Insurance. Employer units consolidate establishments for employers with multiple worksites and classify employers engaged in more than one type of business activity according to their primary activity and employers engaged in business in more than one county according to their primary county location.

The Confidential Information Protection and Statistical Efficiency Act (CIPSEA) of 2002 (Title V of Public Law 107-347) requires that information acquired by the BLS under a pledge of confidentiality for exclusively statistical purposes shall be used by BLS officers, employees, and agents for statistical purposes only. Section 383-95 of the Hawai'i Employment Security Law provides that any information obtained from any employing unit cannot be disclosed in any manner revealing the firm's identity. All data disclosing individual employing units are represented by an asterisk.

Comparability with other issues. Issues of the Annual Employment and Payrolls date back to 1951. Incongruity is apparent: due to changes in the unemployment insurance laws, changes in the industry coding manuals, changes in federal interpretations of the manuals, noneconomic changes in area and industry classification as adjusted by the Annual Refiling Survey, and changes in the report format. With the introduction of NAICS in 2001, and due to the differences between the NAICS and SIC structures, data for 2001 will not be comparable with the SIC-based data for earlier years. Adjustments need to be made or shortcomings need to be stipulated when using this series in trend analysis.

Comparability with other data. The *Employment and Payrolls* Report defines employment as the number of workers, covered by Hawaii Employment Security Law, who worked during or received pay for the payroll period which includes the twelfth of the month, reported by place of work (job count). The *Employment and Payrolls* Report does not include the self-employed. Other reports published by the Department of Labor and Industrial Relations that present employment data may show slightly different figures. For example, the *Labor Force Data Book* defines labor force employment as the actual number of persons working. Therefore, a person may be counted more than once in the *Employment and Payrolls* Report, but only once in labor force employment. Also, the *Labor Force Data Book* defines jobcount as the number of paid employees by establishment. This includes all employees regardless of Unemployment Insurance coverage and differs from the *Employment and Payrolls* Report, which excludes non-covered workers such as certain student hires.

---

<sup>i</sup> See James A. Walker and John B. Murphy, "Implementing the North American Industry Classification System at BLS"

<sup>ii</sup> See David R. H. Hiles, "A first look at employment and wages using NAICS"