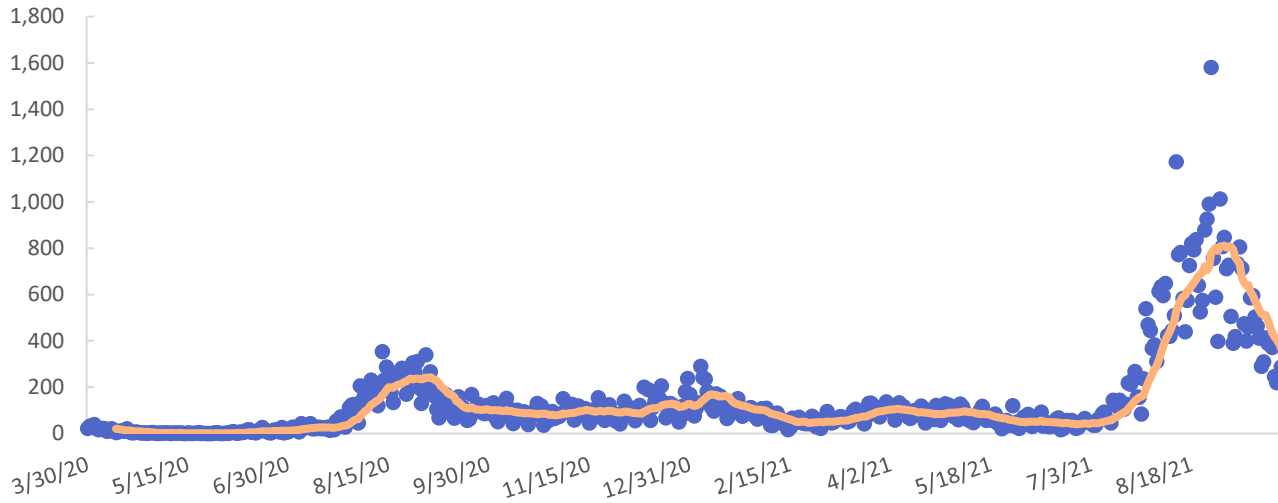




Issued September 30, 2021

## COVID-19 Metrics

New known cases and 14-day moving average



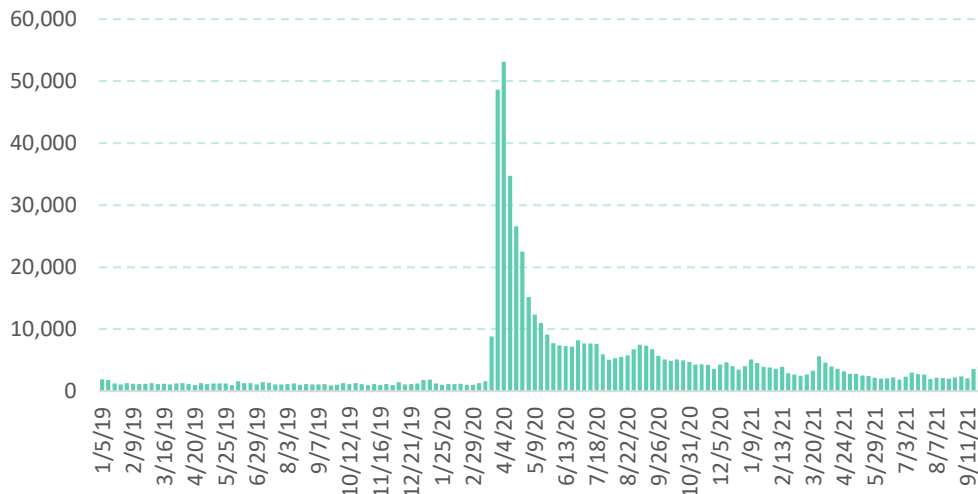
Case metrics	Cumulative total	Per 100K population
<b>Cases</b>	79,206	5,594
<b>Hospitalizations</b>	5,229	369
<b>Deaths</b>	782	55

People vaccinated	Number	Percent
<b>At least 1 dose</b>	1,081,721	76.4
<b>Completed</b>	965,192	68.2

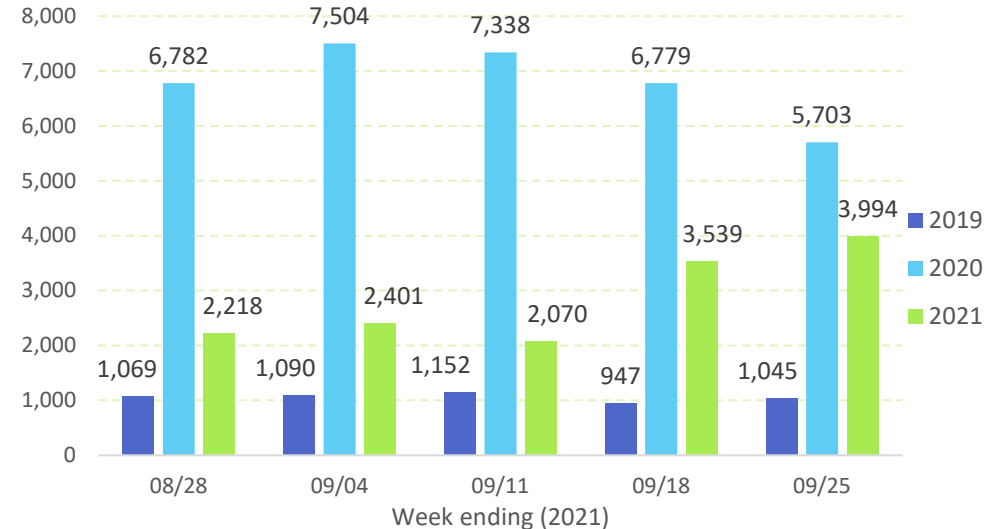
For latest data available as of September 30, 2021.

## Initial Unemployment Claims

Claims, 2019-2021



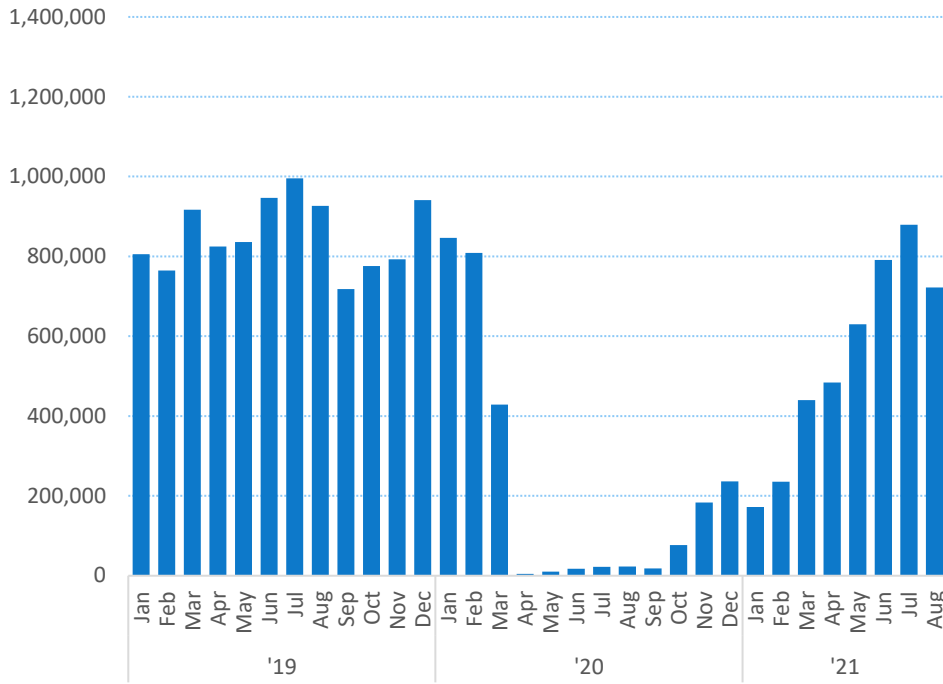
Claims, 3-year comparison



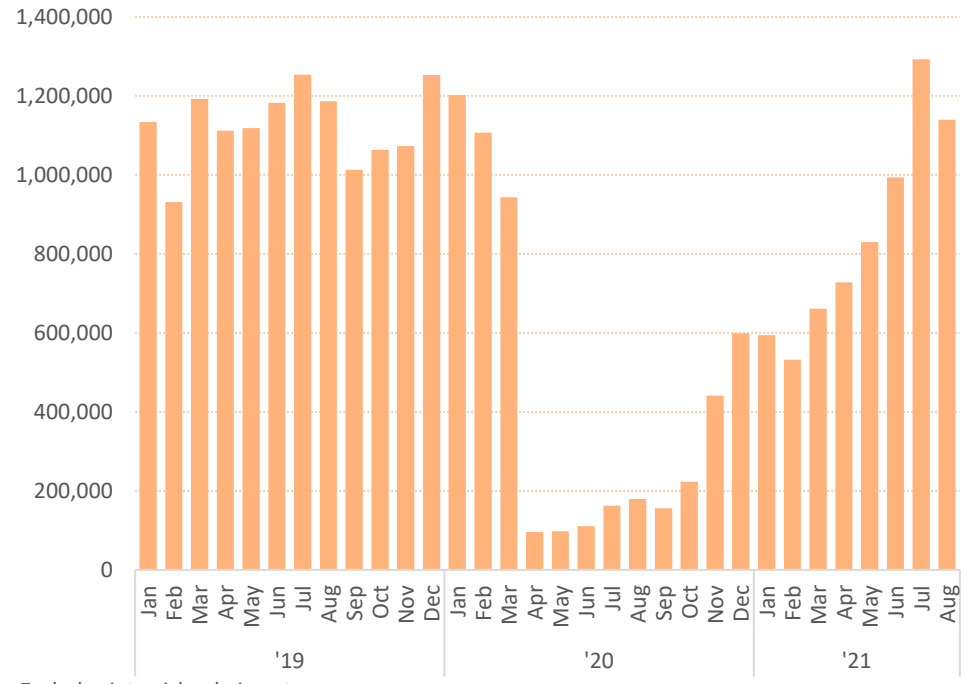


# Tourism Overview

## Total visitor arrivals by air

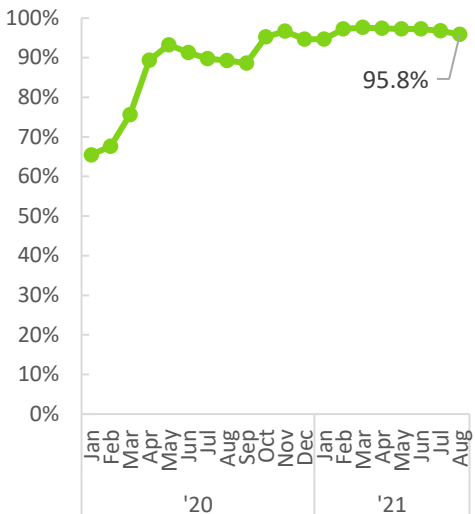


## Total airseats

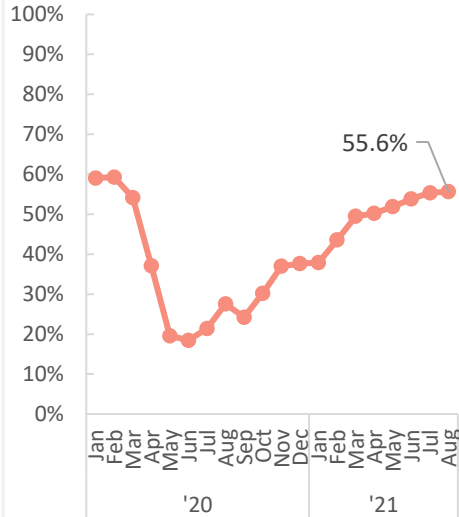


Excludes inter-island airseats.

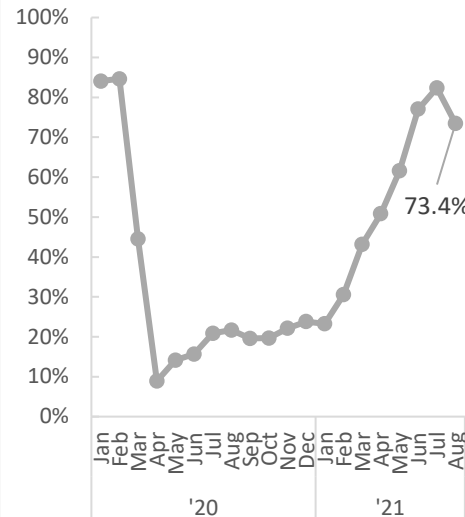
## US mainland visitors (% of total arrivals)



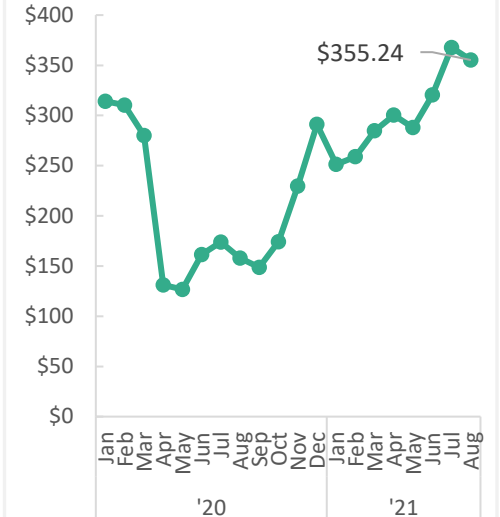
## Visitors staying in hotels (%)



## Hotel occupancy (%)



## Average hotel room rate (\$)

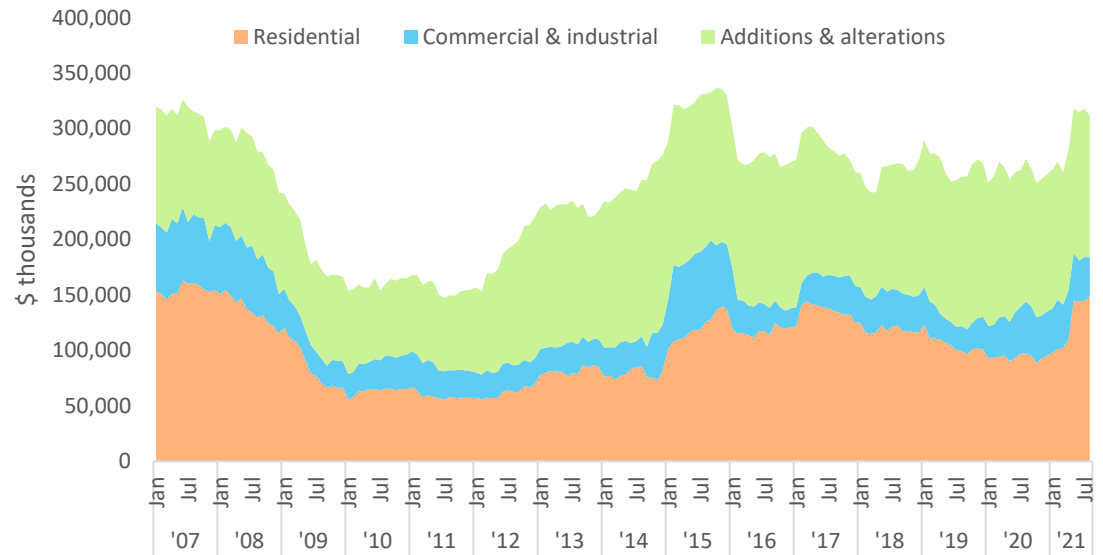


## Construction

	Aug. 2021	Aug. 2020	% Change from Aug. 2020
<b>Total private permits</b>	NA	391,845	NA
<b>Residential</b>	NA	101,974	NA
<b>Commercial &amp; industrial</b>	NA	85,066	NA
<b>Additions &amp; alterations</b>	NA	204,805	NA

Permit values in \$ thousands.

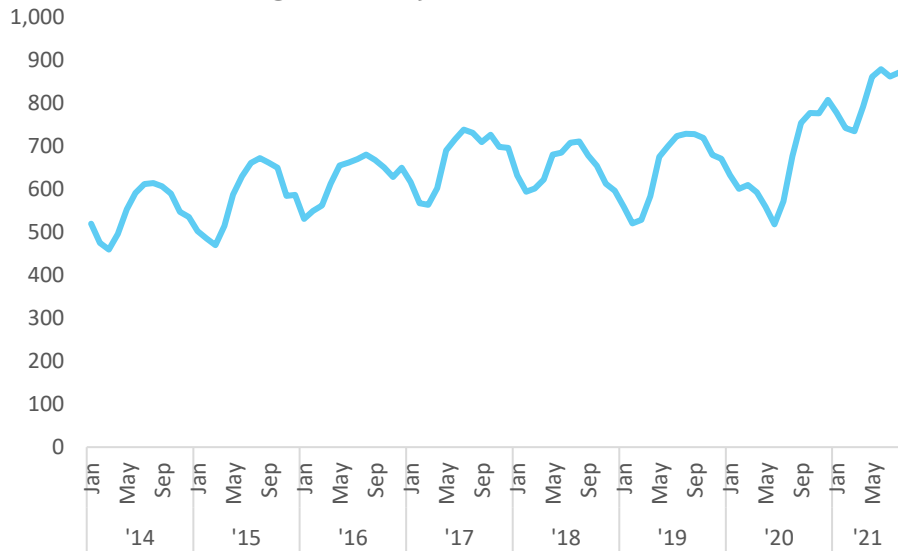
Private building permits (values in \$ thousands)\*



\*12 month moving average

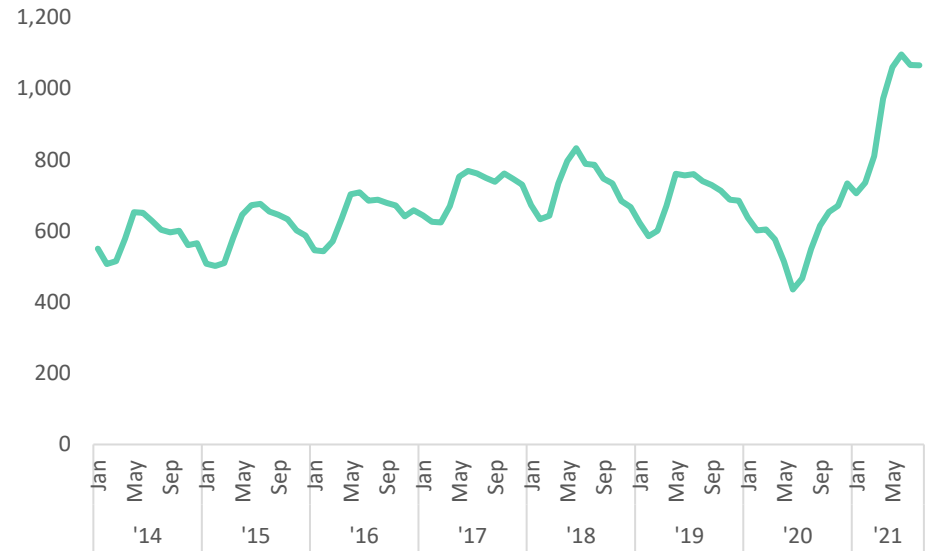
## Housing Market

Single family home resales\*



\*3 month moving average

Condo/Apartment/Townhouse resales\*



\*3 month moving average

## Data

Hawaii State Department of Health, [Hawaii COVID-19 Data](#)

Hawaii Emergency Management Agency, [COVID-19 Information Hub](#)

Hawaii Department of Business, Economic Development & Tourism, [Weekly Unemployment Updates](#)

Hawaii Department of Business, Economic Development & Tourism, [Economic Data Warehouse](#)

Hawaii Department of Business, Economic Development & Tourism, [Tourism Data Warehouse](#)

*Starting in August 2021, 2020 Decennial Census figures were used to calculate rates per 100,000 population for COVID-19 metrics. Prior to August 2021, U.S. Census Bureau Population Estimates were used.*

*"Completed" vaccinations are two doses of the Pfizer or Moderna vaccine or a single dose of the Johnson & Johnson vaccine.*