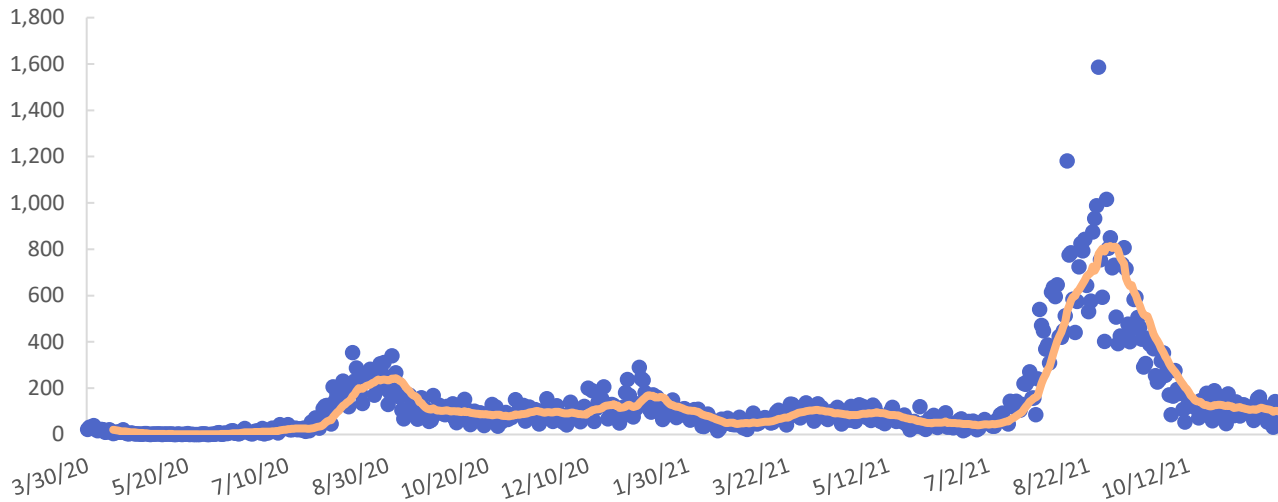




Issued November 30, 2021

COVID-19 Metrics

New known cases and 14-day moving average



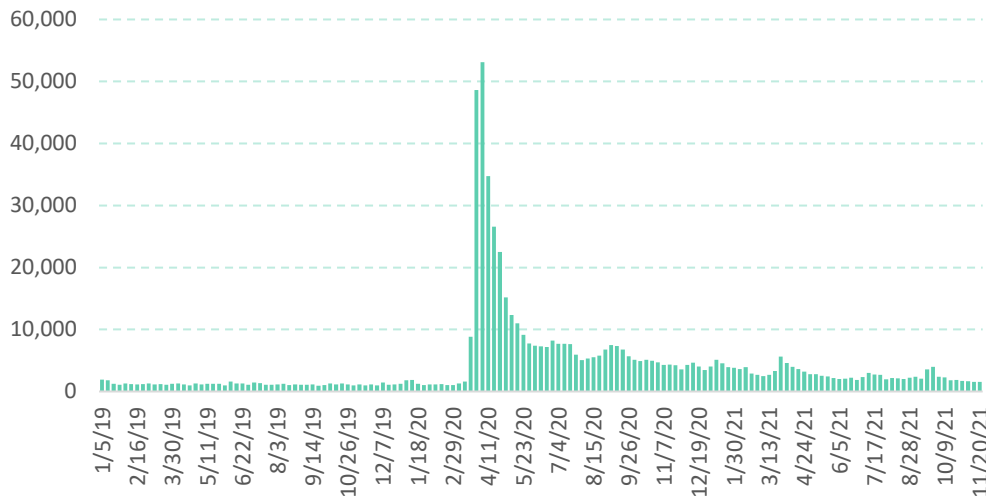
| Case metrics | Cumulative total | Per 100K population |
|-------------------------|------------------|---------------------|
| Cases | 87,664 | 6,024 |
| Hospitalizations | 5,735 | 394 |
| Deaths | 1,018 | 70 |

| People vaccinated | Number | Percent |
|------------------------|-----------|---------|
| At least 1 dose | 1,097,114 | 75.4 |
| Completed | 1,013,339 | 69.6 |

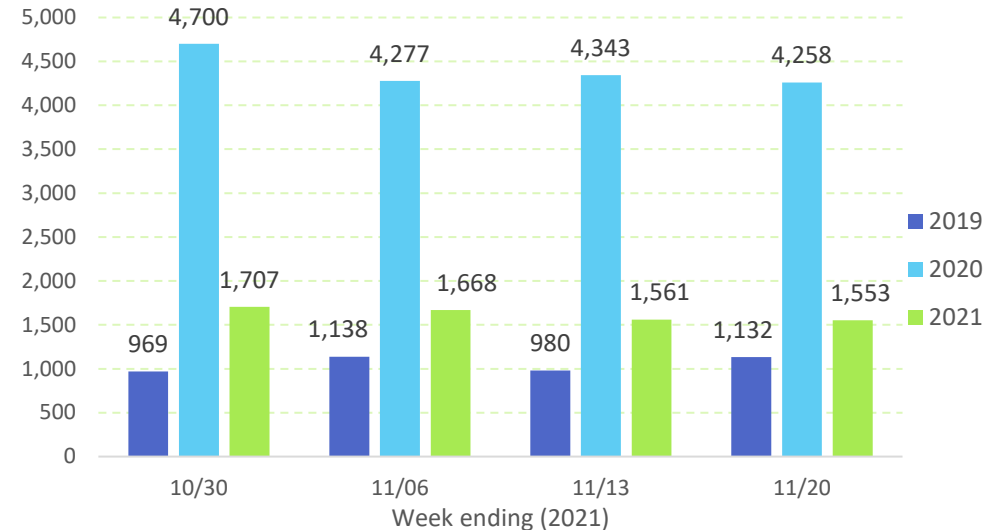
For latest data available as of November 30, 2021.

Initial Unemployment Claims

Claims, 2019-2021

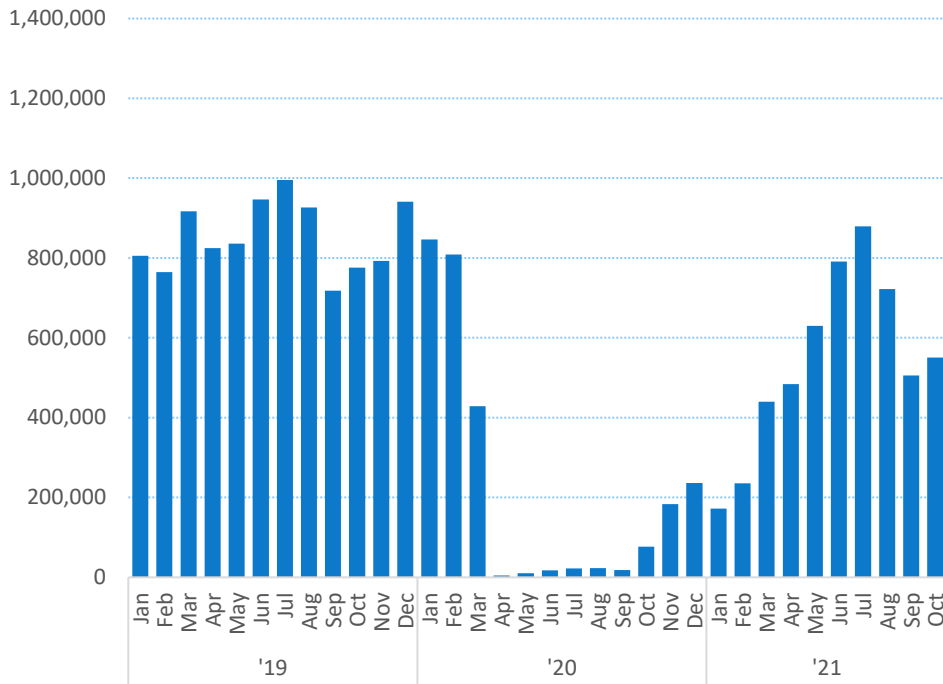


Claims, 3-year comparison

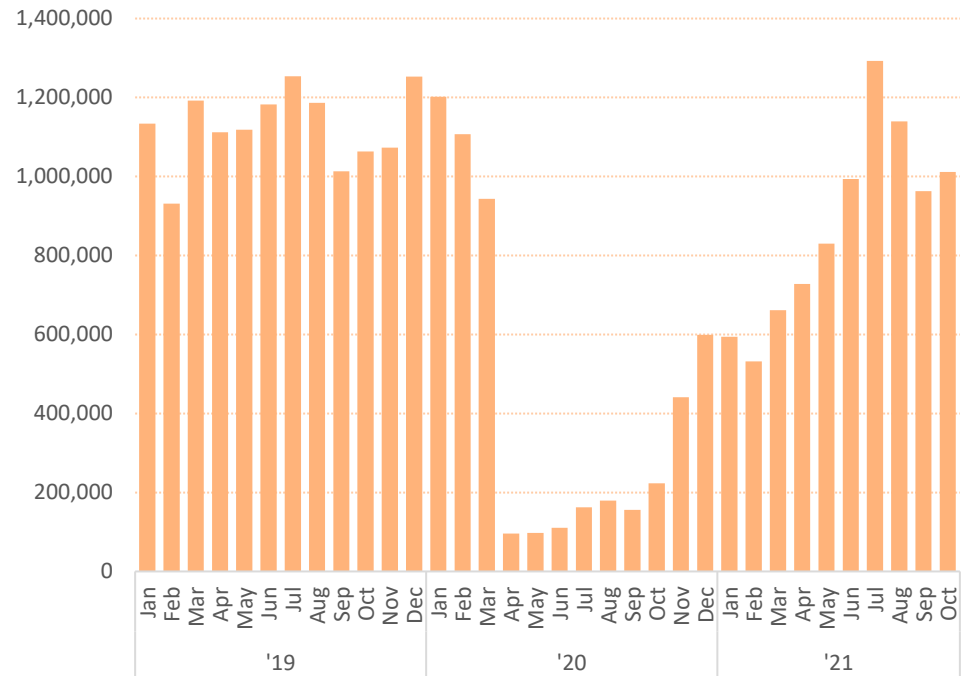


Tourism Overview

Total visitor arrivals by air

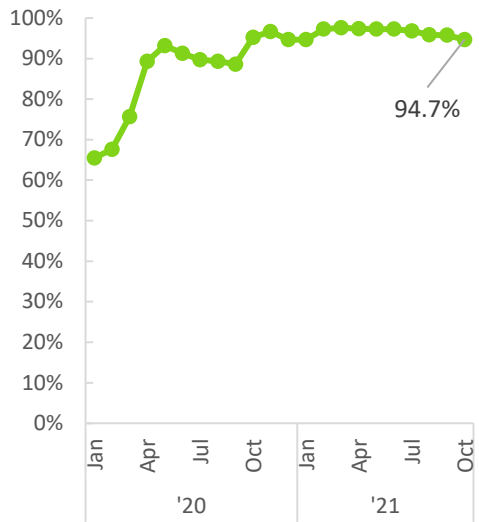


Total airseats

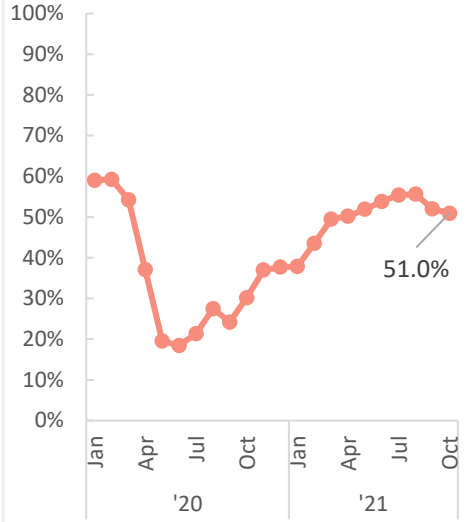


Excludes inter-island airseats.

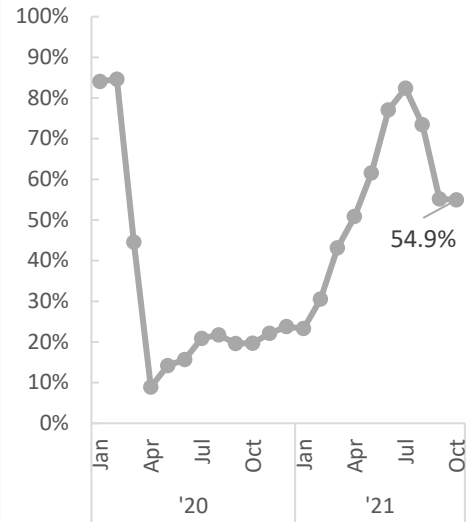
US mainland visitors (% of total arrivals)



Visitors staying in hotels (%)



Hotel occupancy (%)



Average hotel room rate (\$)

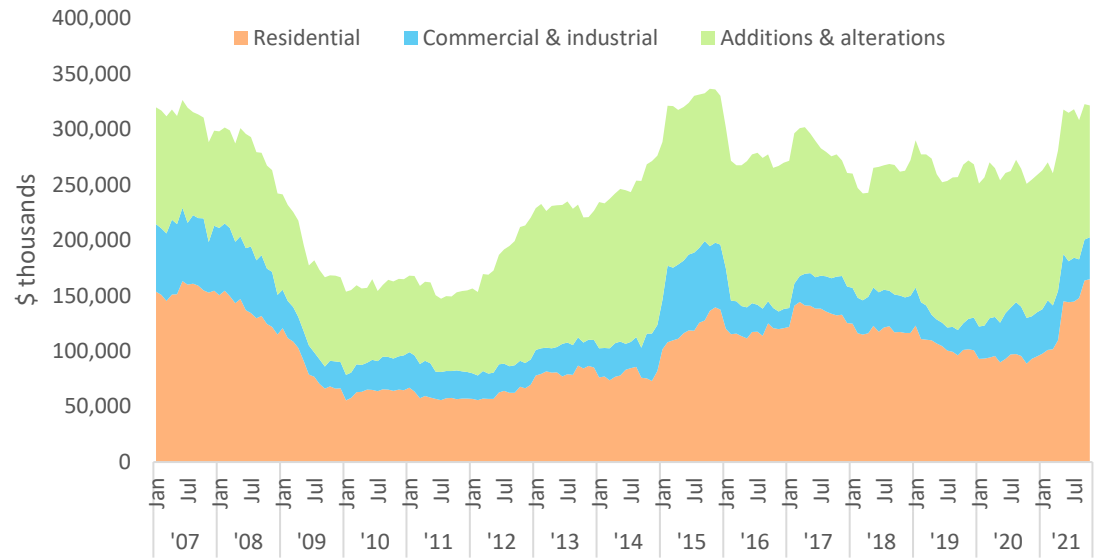


Construction

| | Oct. 2021 | Oct. 2020 | % Change from Oct. 2020 |
|------------------------------------|-----------|-----------|-------------------------|
| Total private permits | 200,975 | 214,249 | -6.2 |
| Residential | 103,550 | 90,042 | 15.0 |
| Commercial & industrial | 19,598 | 6,637 | 195.3 |
| Additions & alterations | 77,827 | 117,570 | -33.8 |

Permit values in \$ thousands.

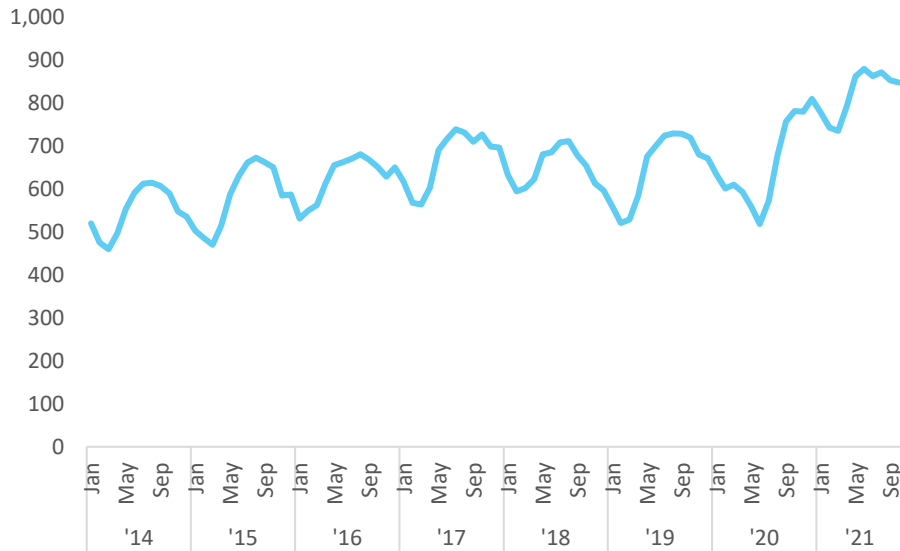
Private building permits (values in \$ thousands)*



*12 month moving average

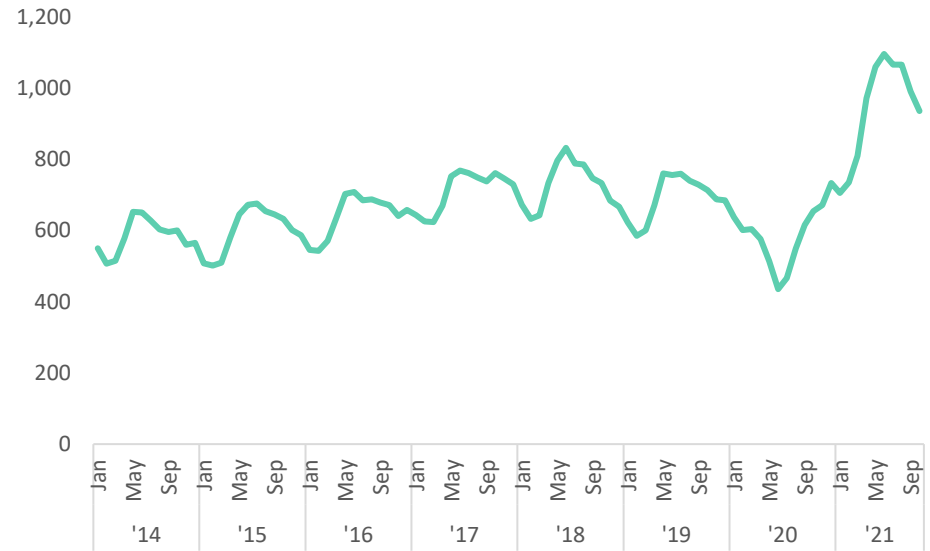
Housing Market

Single family home resales*



*3 month moving average

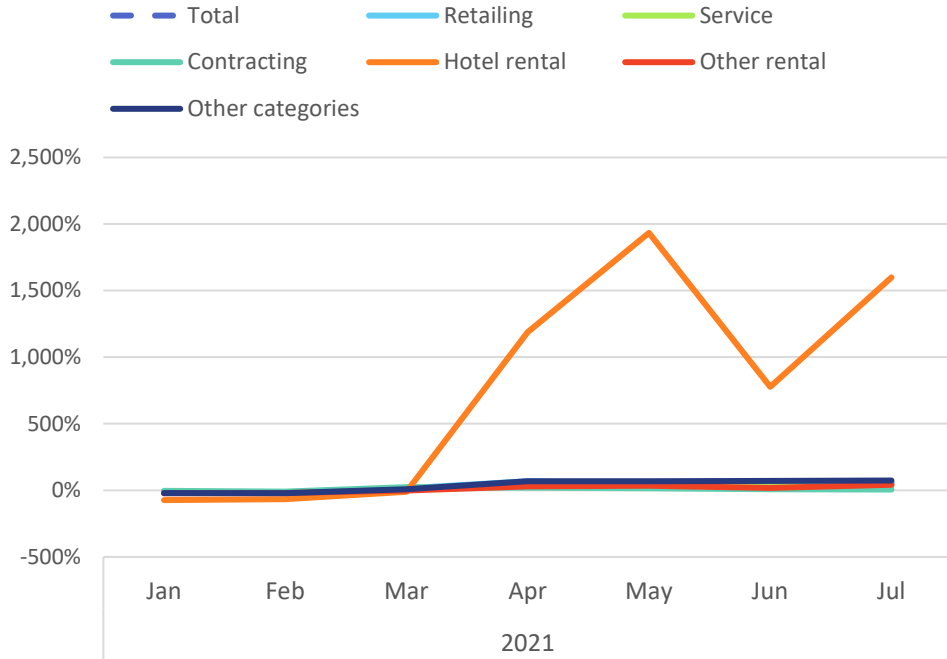
Condo/Apartment/Townhouse resales*



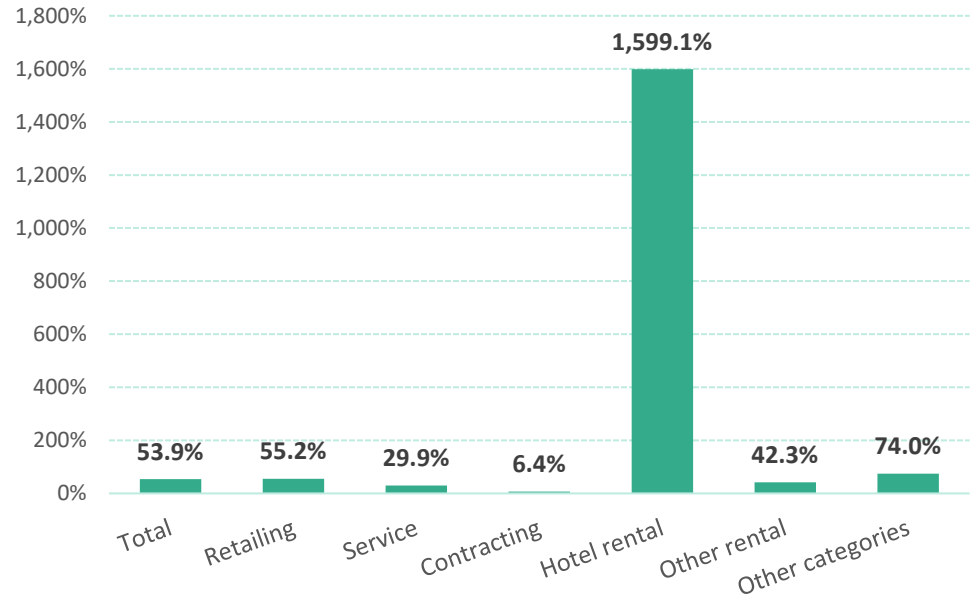
*3 month moving average

General Excise Tax Liability

% Change from same month prior year



By category (Jul. 2021)



Data

Hawaii State Department of Health, [Hawaii COVID-19 Data](#)

Hawaii Emergency Management Agency, [COVID-19 Information Hub](#)

Hawaii Department of Business, Economic Development & Tourism, [Weekly Unemployment Updates](#)

Hawaii Department of Business, Economic Development & Tourism, [Economic Data Warehouse](#)

Hawaii Department of Business, Economic Development & Tourism, [Tourism Data Warehouse](#)

Starting in August 2021, 2020 Decennial Census figures were used to calculate rates per 100,000 population for COVID-19 metrics. Prior to August 2021, U.S. Census Bureau Population Estimates were used.

"Completed" vaccinations are two doses of the Pfizer or Moderna vaccine or a single dose of the Johnson & Johnson vaccine.