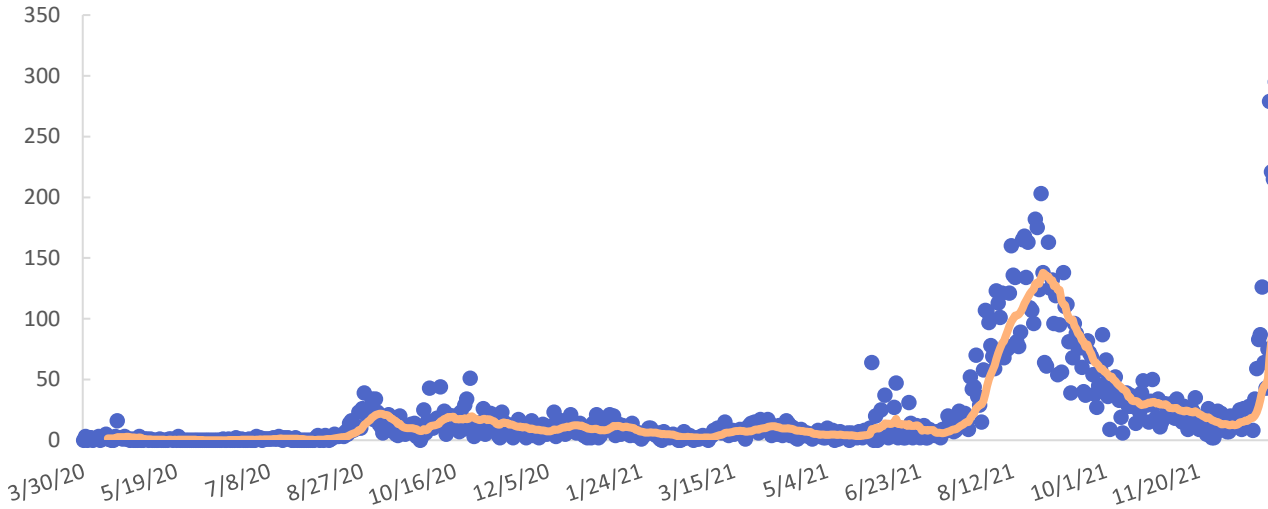




Issued January 3, 2022

COVID-19 Metrics

New known cases and 14-day moving average



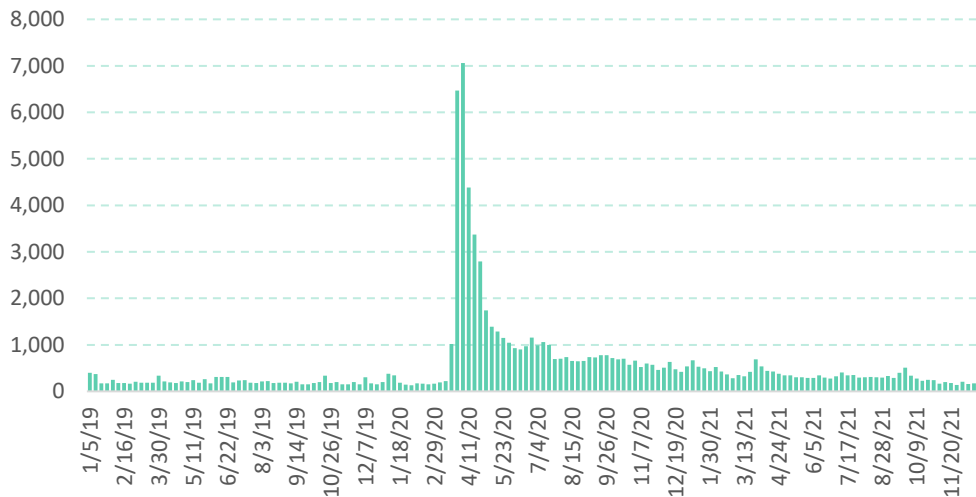
Case metrics	Cumulative total	Per 100K population
Cases	13,909	6,933
Hospitalizations	580	289
Deaths	153	76

People vaccinated	Number	Percent
At least 1 dose	143,173	71.4
Completed	132,313	65.9

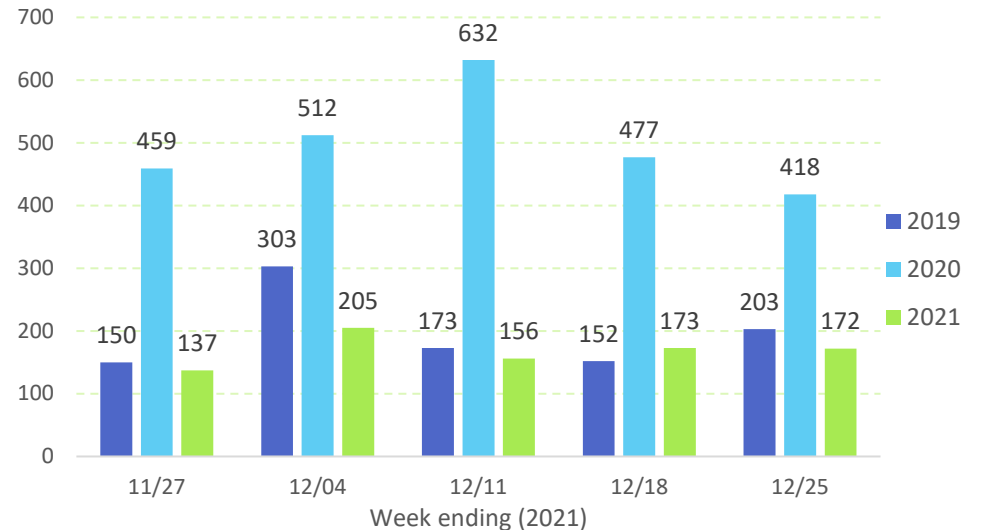
For latest data available as of January 3, 2022.

Initial Unemployment Claims

Claims, 2019-2021

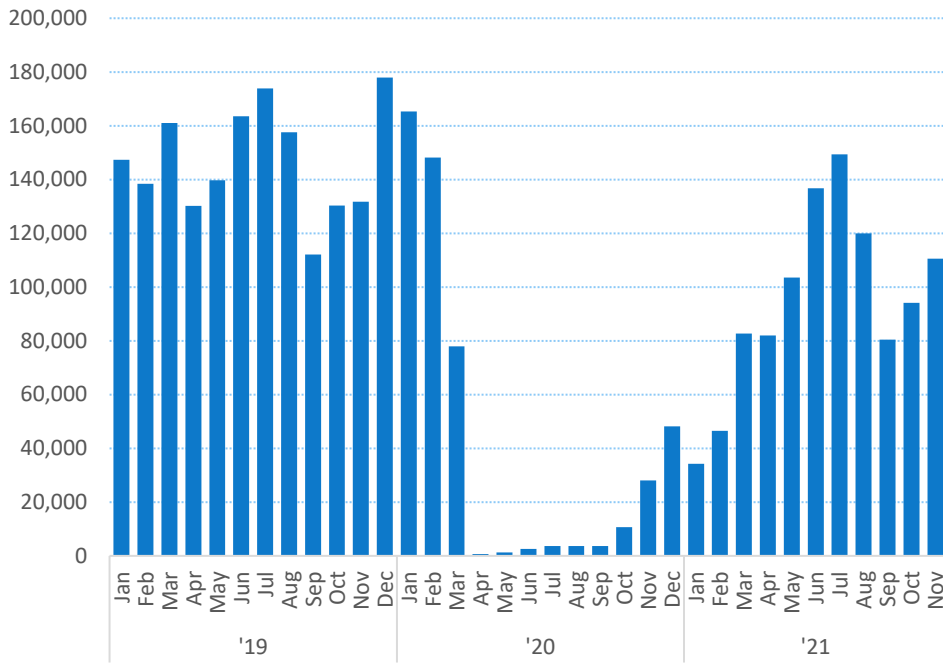


Claims, 3-year comparison

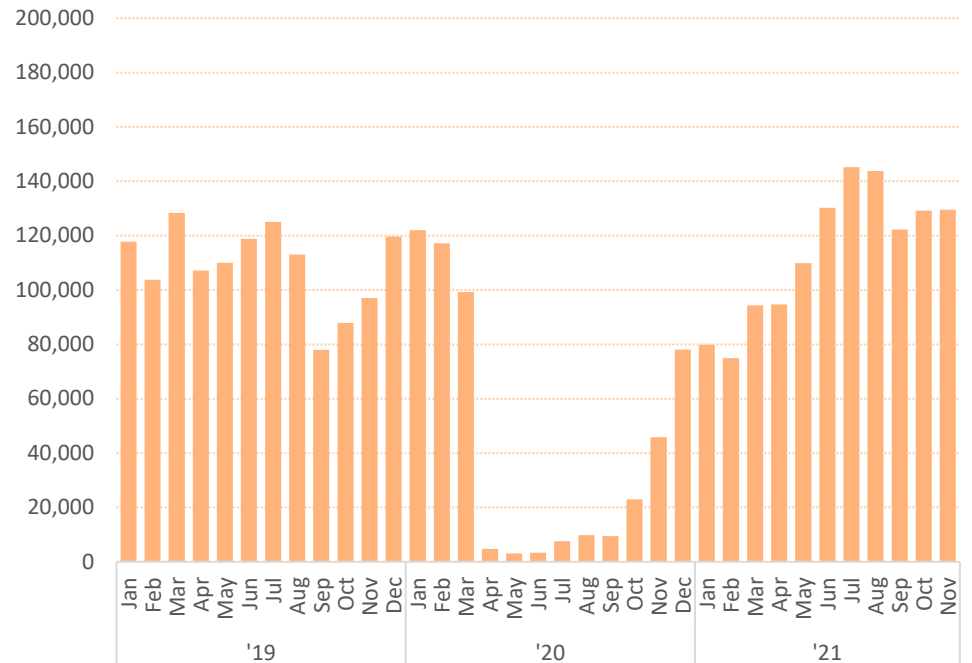


Tourism Overview

Total visitor arrivals by air

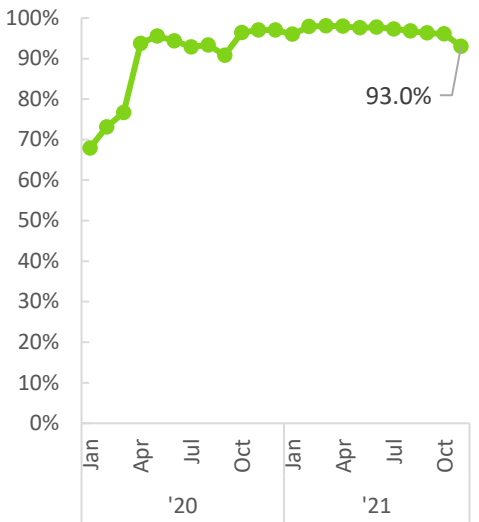


Total airseats

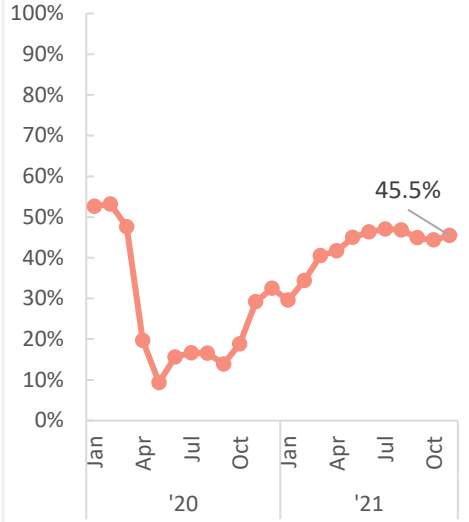


Hilo and Kona airports; excludes inter-island airseats.

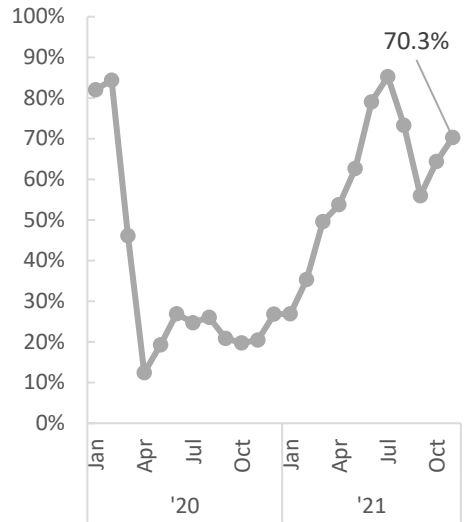
US mainland visitors (% of total arrivals)



Visitors staying in hotels (%)



Hotel occupancy (%)



Average hotel room rate (\$)

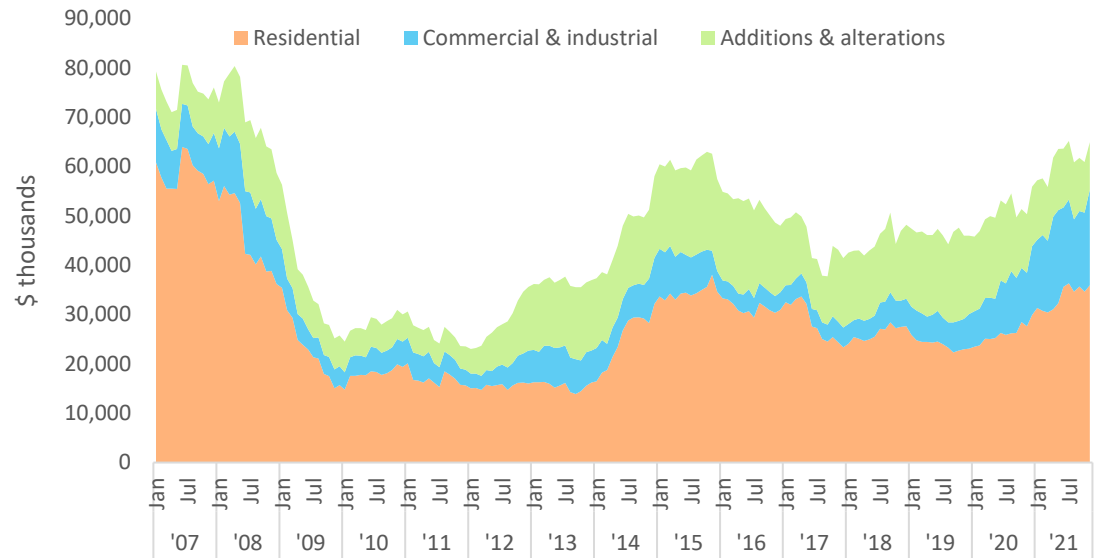


Construction

	Nov. 2021	Nov. 2020	% Change from Nov. 2020
Total private permits	83,211	34,859	138.7
Residential	32,750	16,934	93.4
Commercial & industrial	41,522	1,225	3,290.9
Additions & alterations	8,939	16,701	-46.5

Permit values in \$ thousands.

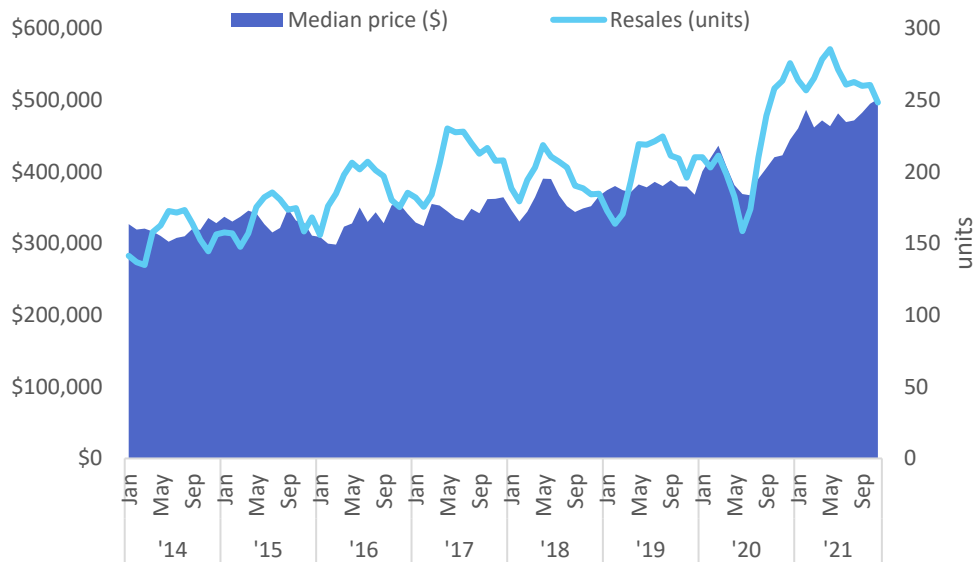
Private building permits (values in \$ thousands)*



*12 month moving average

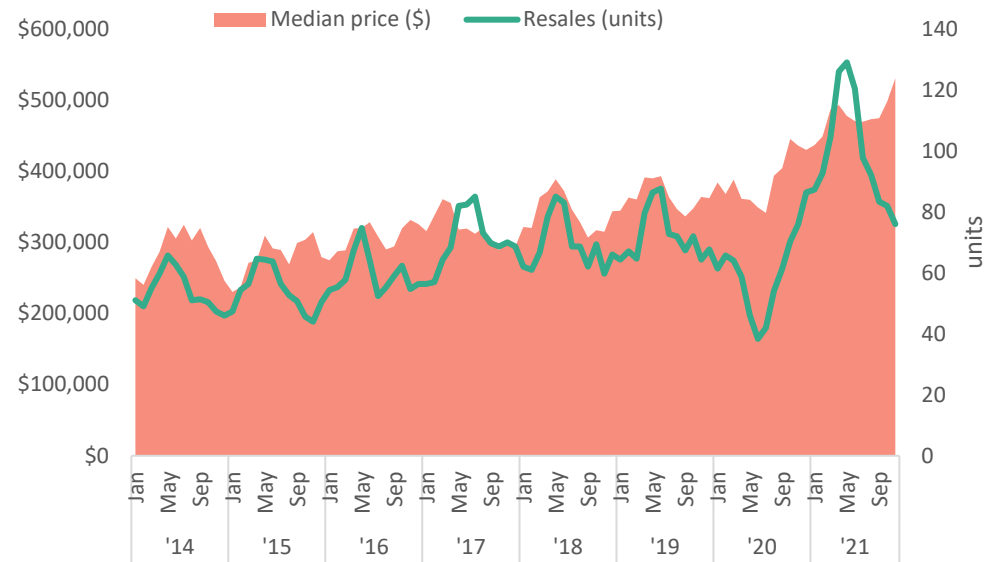
Housing Market

Single family home market*



*3 month moving average

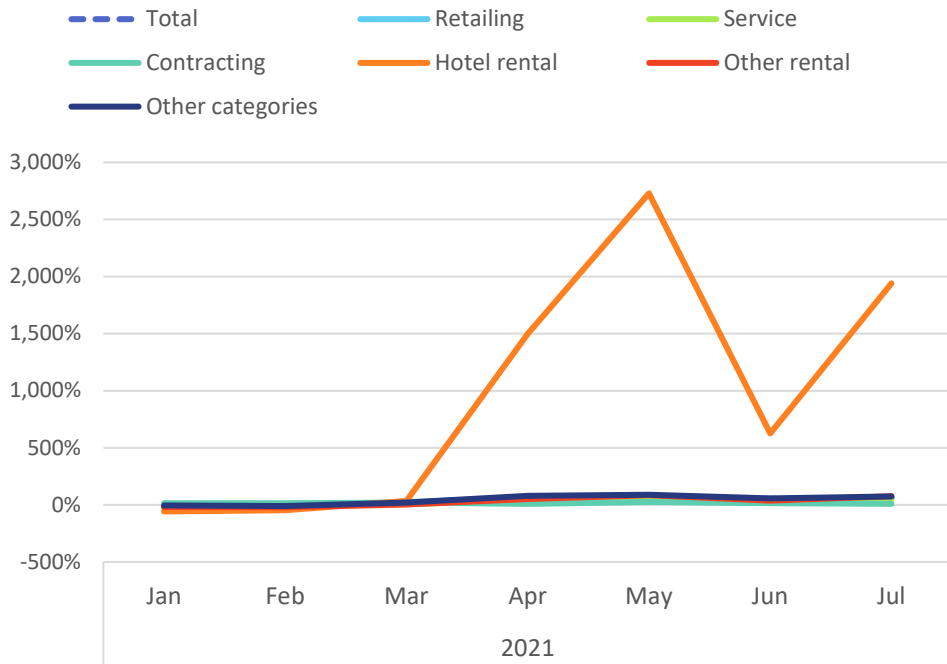
Condo/Apartment/Townhouse market*



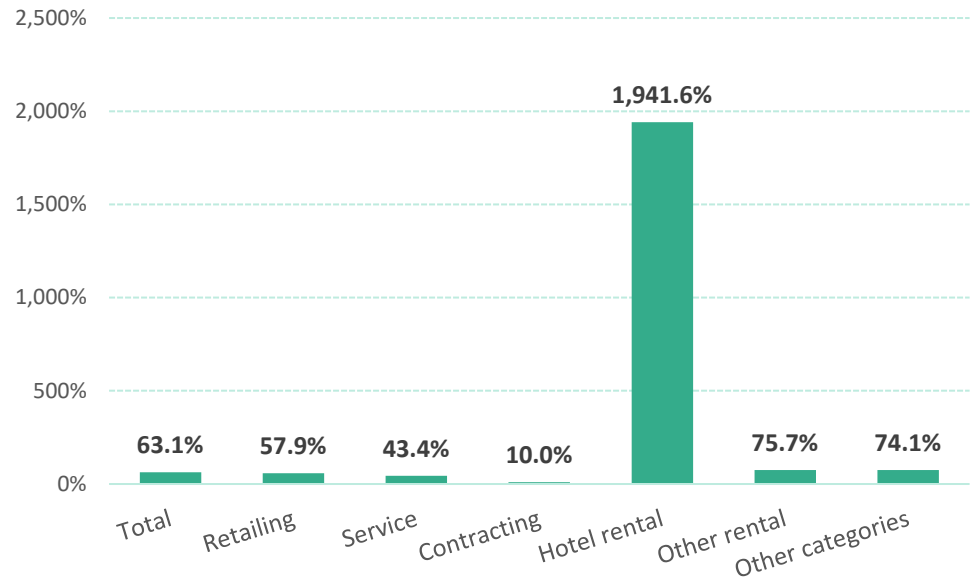
*3 month moving average

General Excise Tax Liability

% Change from same month prior year



By category (Jul. 2021)



Data

Hawaii State Department of Health, [Hawaii COVID-19 Data](#)

Hawaii Emergency Management Agency, [COVID-19 Information Hub](#)

Hawaii Department of Business, Economic Development & Tourism, [Weekly Unemployment Updates](#)

Hawaii Department of Business, Economic Development & Tourism, [Economic Data Warehouse](#)

Hawaii Department of Business, Economic Development & Tourism, [Tourism Data Warehouse](#)

Starting in August 2021, 2020 Decennial Census figures were used to calculate rates per 100,000 population for COVID-19 metrics. Prior to August 2021, U.S. Census Bureau Population Estimates were used.

"Completed" vaccinations are two doses of the Pfizer or Moderna vaccine or a single dose of the Johnson & Johnson vaccine.