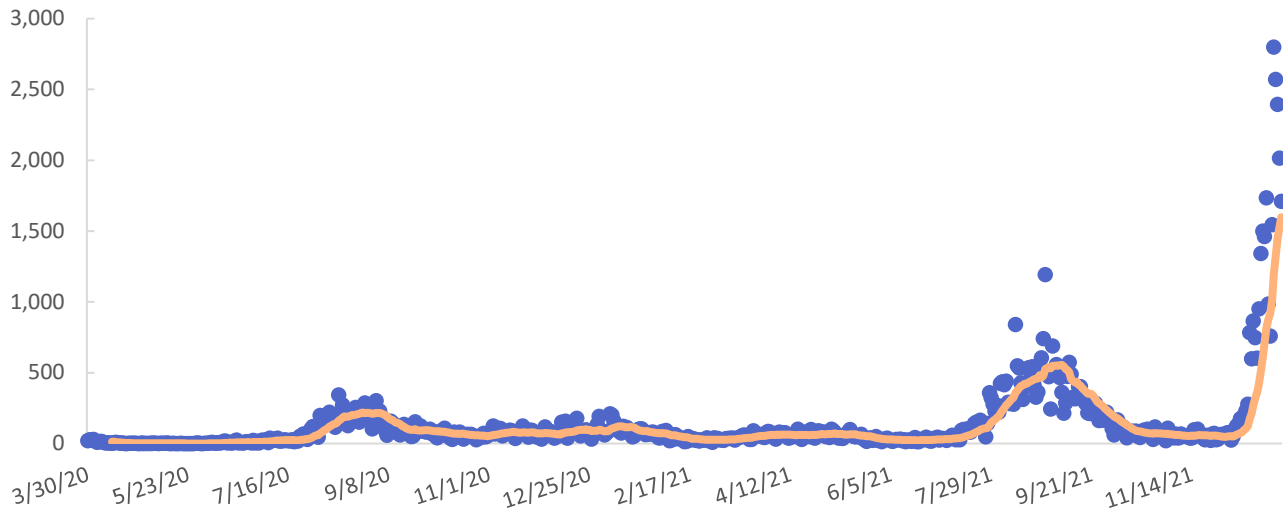




Issued January 3, 2022

COVID-19 Metrics

New known cases and 14-day moving average



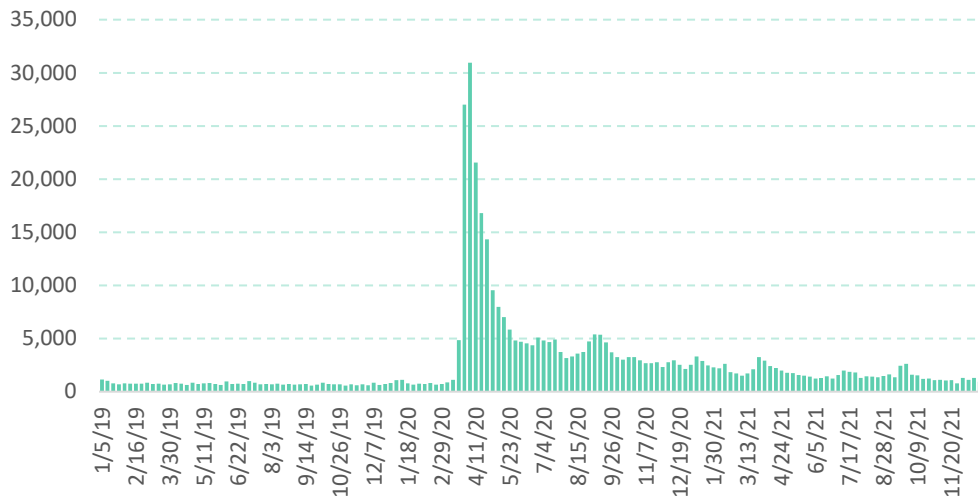
Case metrics	Cumulative total	Per 100K population
Cases	86,830	8,542
Hospitalizations	4,840	476
Deaths	805	79

People vaccinated	Number	Percent
At least 1 dose	816,456	80.3
Completed	762,355	75.0

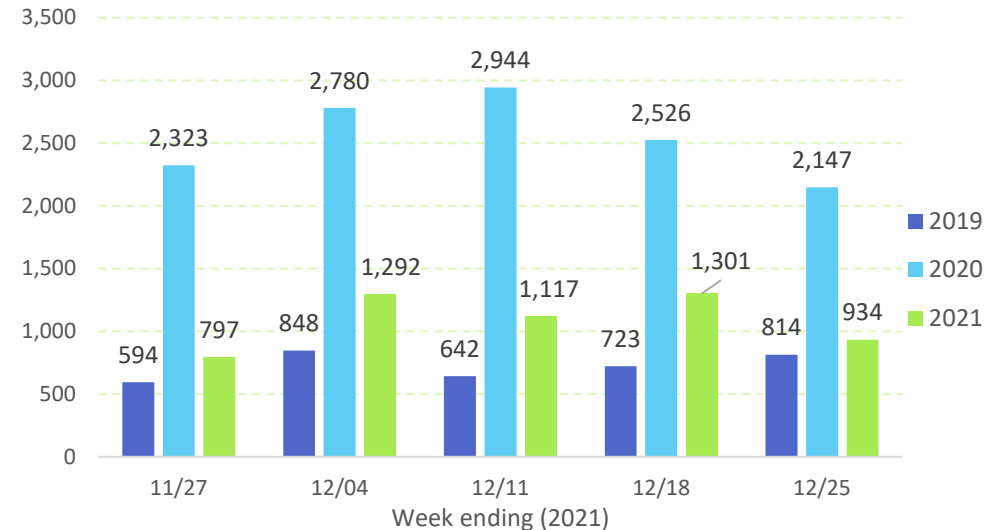
For latest data available as of January 3, 2022.

Initial Unemployment Claims

Claims, 2019-2021

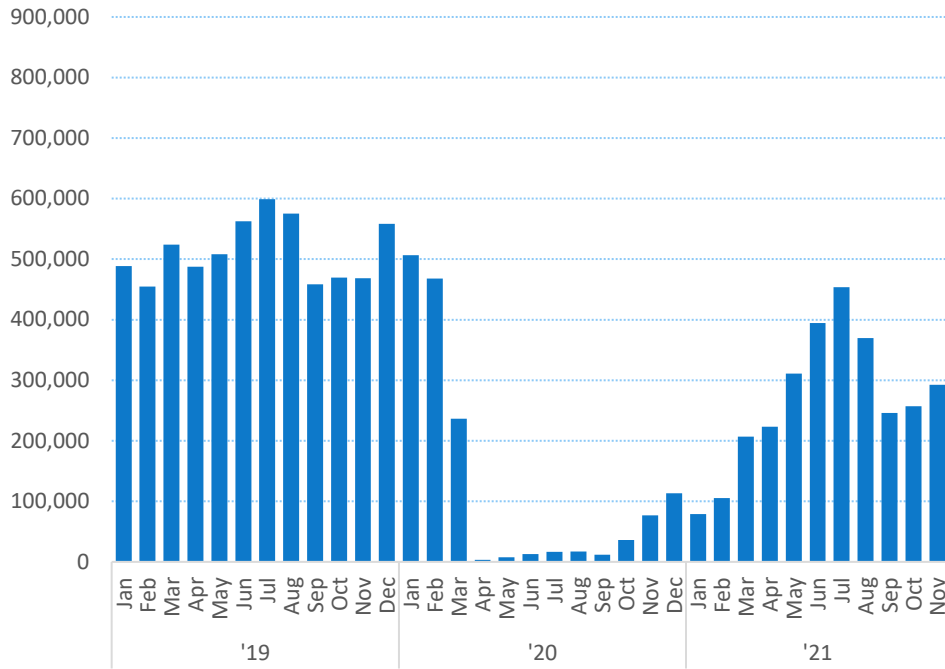


Claims, 3-year comparison

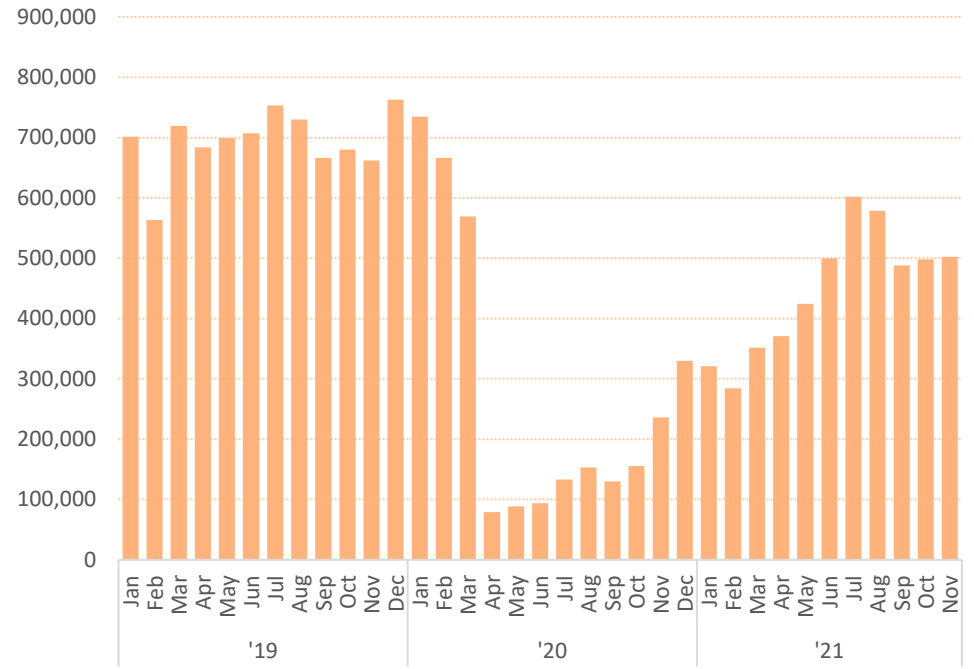


Tourism Overview

Total visitor arrivals by air

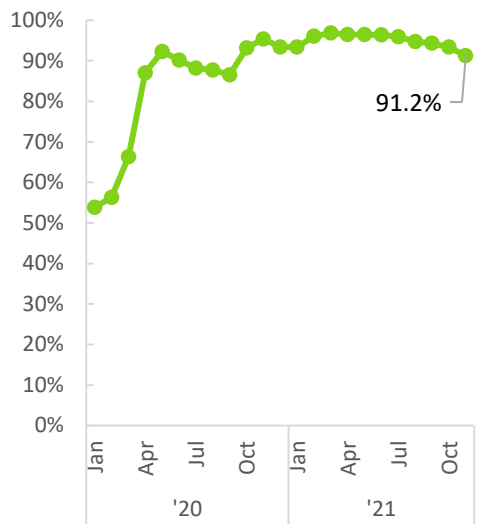


Total airseats

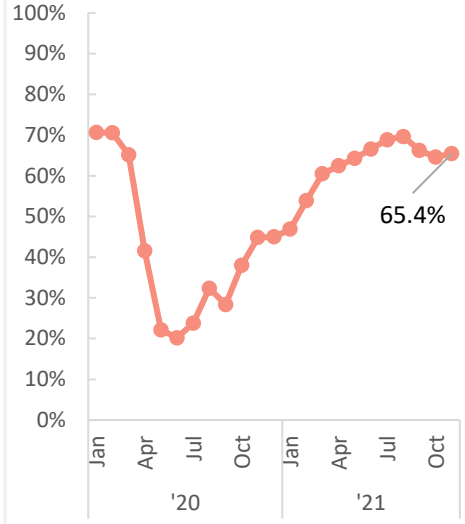


Honolulu airport; excludes inter-island airseats.

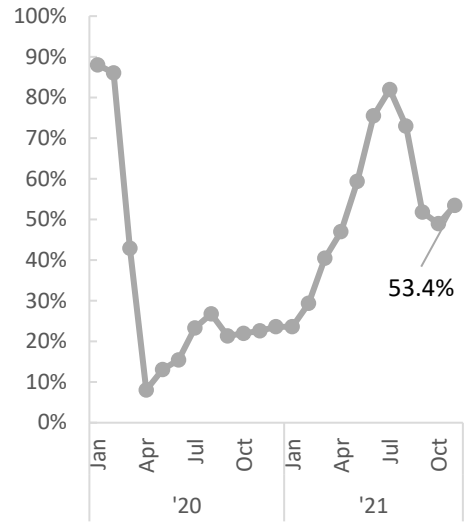
US mainland visitors (% of total arrivals)



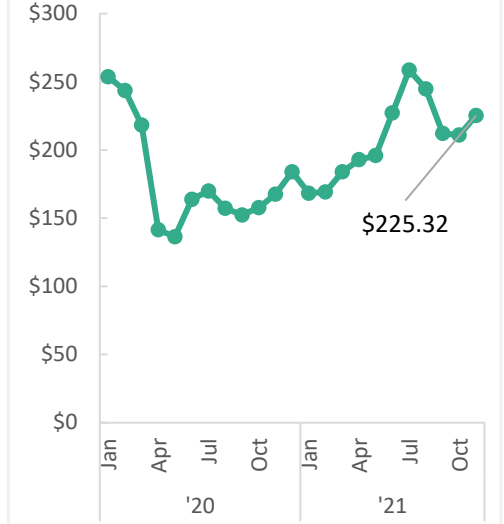
Visitors staying in hotels (%)



Hotel occupancy (%)

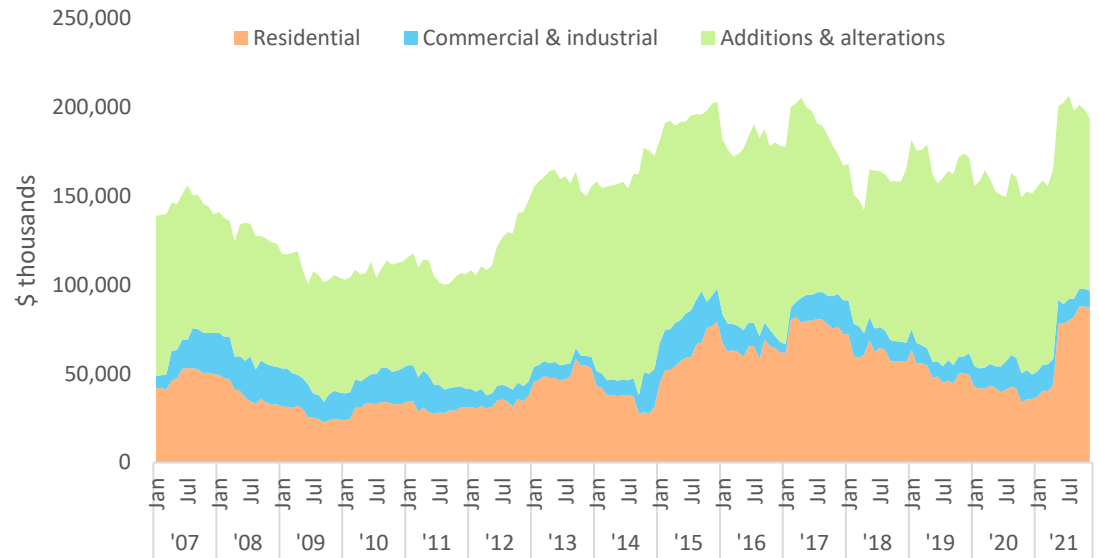


Average hotel room rate (\$)



Construction

Private building permits (values in \$ thousands)*



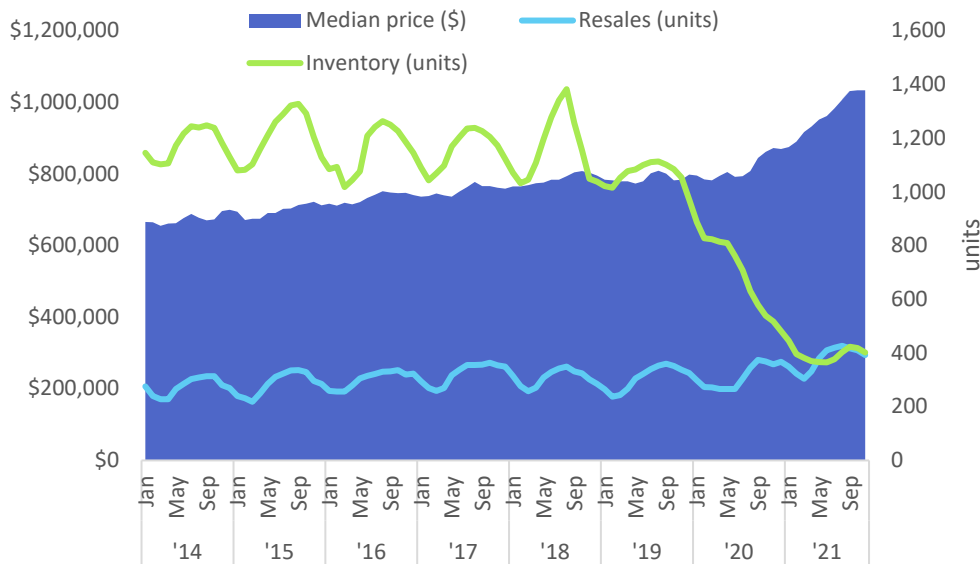
*12 month moving average

	Nov. 2021	Nov. 2020	% Change from Nov. 2020
Total private permits	103,357	163,849	-36.9
Residential	43,810	53,290	-17.8
Commercial & industrial	647	5,529	-88.3
Additions & alterations	58,901	105,030	-43.9

Permit values in \$ thousands.

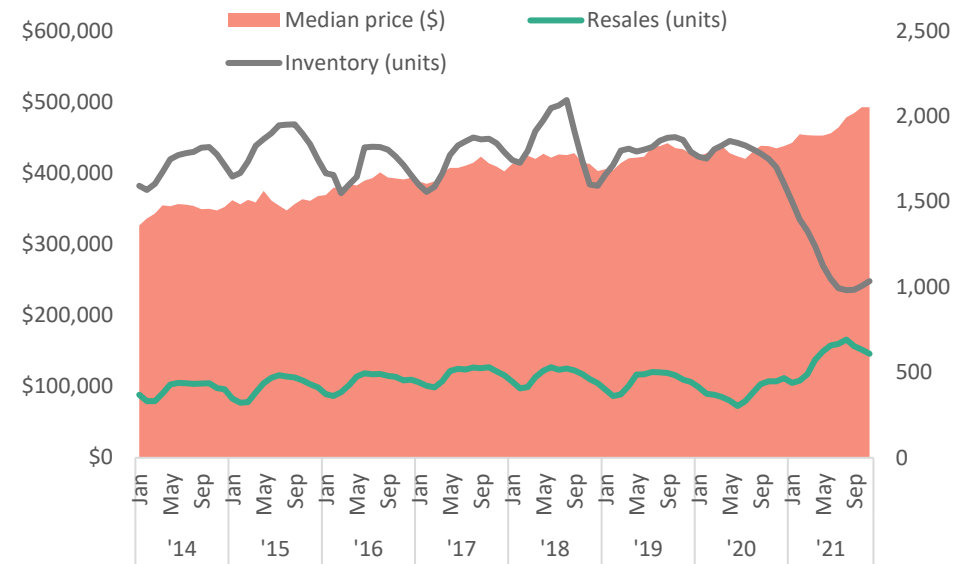
Housing Market

Single family home market*



*3 month moving average

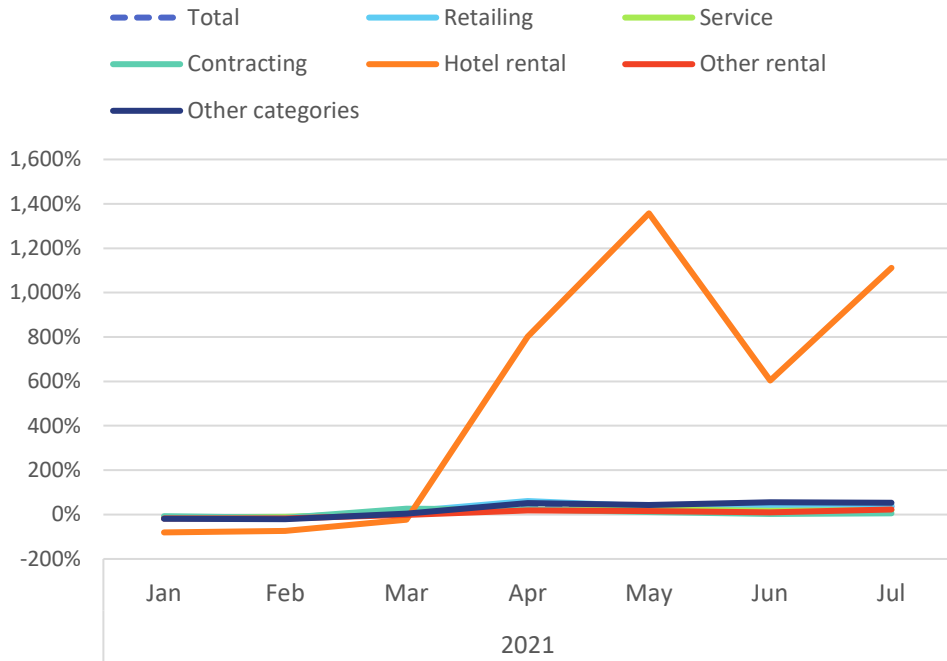
Condo/Apartment/Townhouse market*



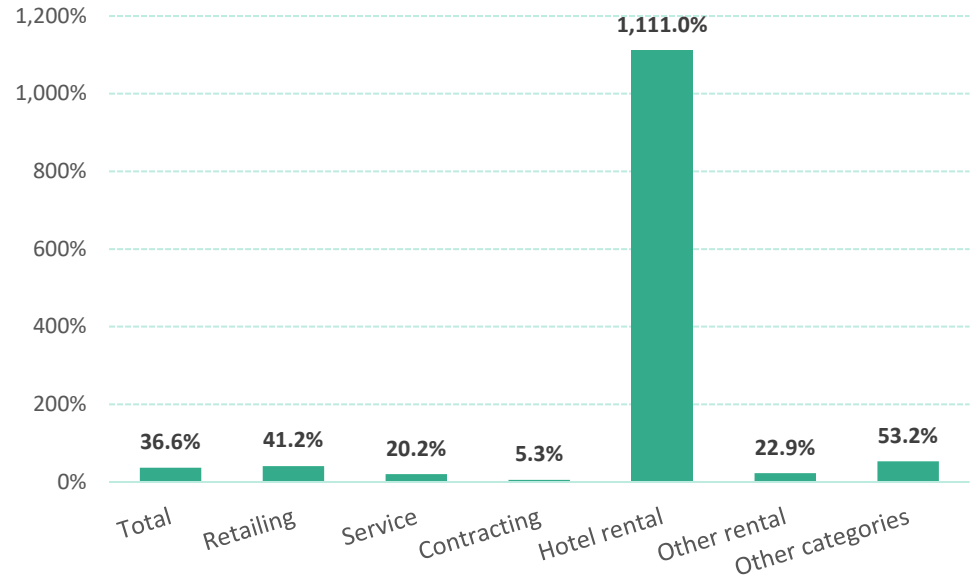
*3 month moving average

General Excise Tax Liability

% Change from same month prior year



By category (Jul. 2021)



Data

Hawaii State Department of Health, [Hawaii COVID-19 Data](#)

Hawaii Emergency Management Agency, [COVID-19 Information Hub](#)

Hawaii Department of Business, Economic Development & Tourism, [Weekly Unemployment Updates](#)

Hawaii Department of Business, Economic Development & Tourism, [Economic Data Warehouse](#)

Hawaii Department of Business, Economic Development & Tourism, [Tourism Data Warehouse](#)

Starting in August 2021, 2020 Decennial Census figures were used to calculate rates per 100,000 population for COVID-19 metrics. Prior to August 2021, U.S. Census Bureau Population Estimates were used.

"Completed" vaccinations are two doses of the Pfizer or Moderna vaccine or a single dose of the Johnson & Johnson vaccine.