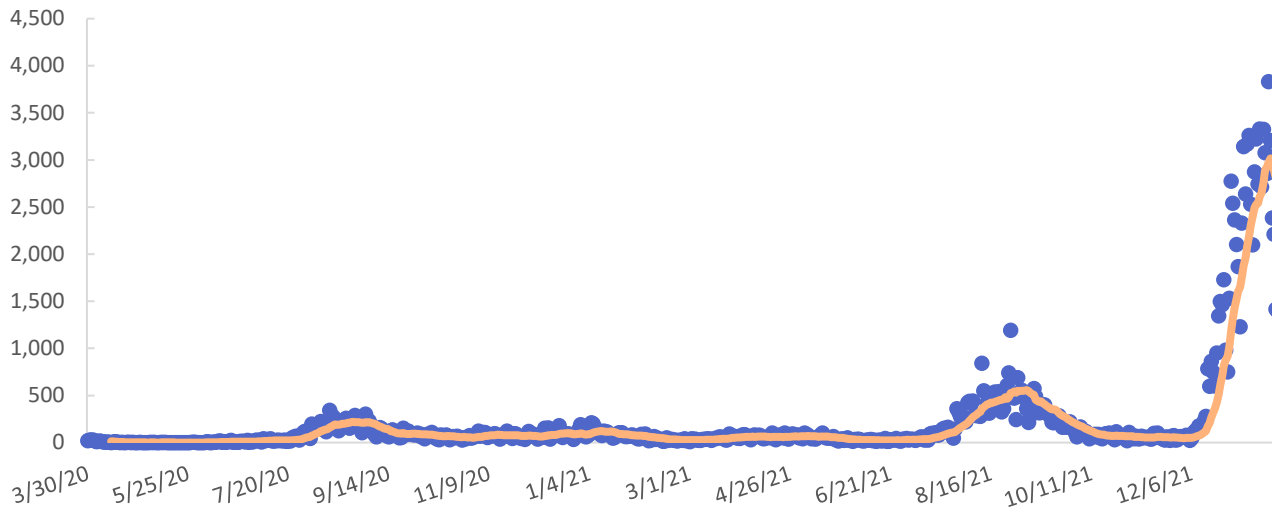




Issued January 27, 2022

## COVID-19 Metrics

New known cases and 14-day moving average



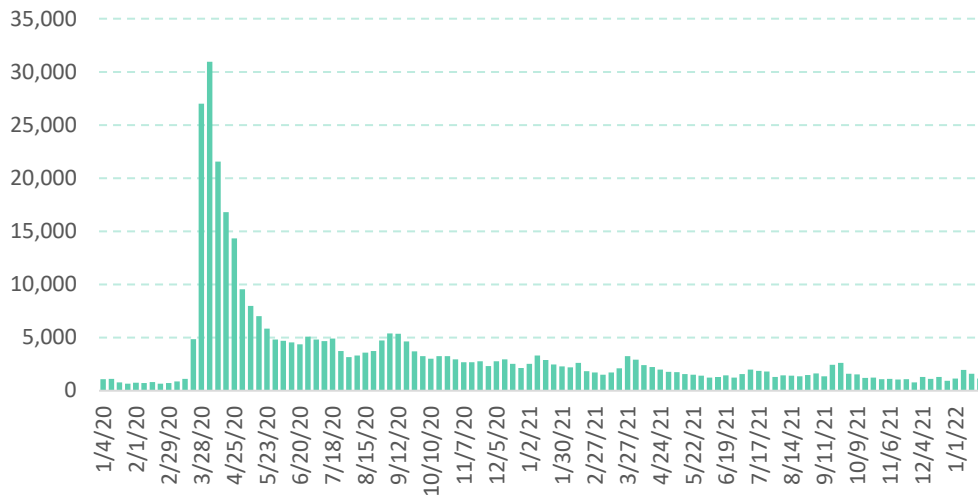
Case metrics	Cumulative total	Per 100K population
<b>Cases</b>	148,630	14,622
<b>Hospitalizations</b>	5,925	583
<b>Deaths</b>	853	84

People vaccinated	Number	Percent
<b>At least 1 dose</b>	835,344	82.2
<b>Completed 3rd dose or booster</b>	766,368	75.4
	341,516	33.6

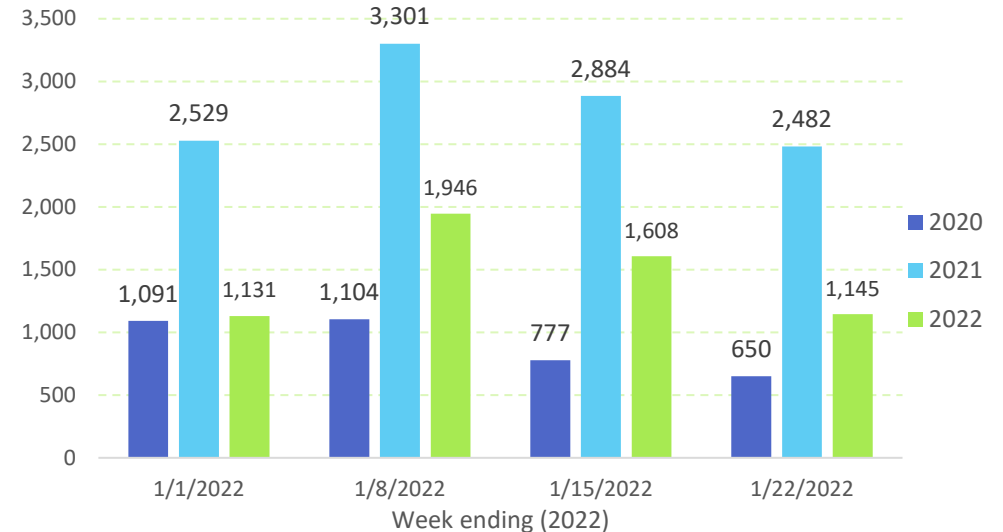
For latest data available as of January 27, 2022.

## Initial Unemployment Claims

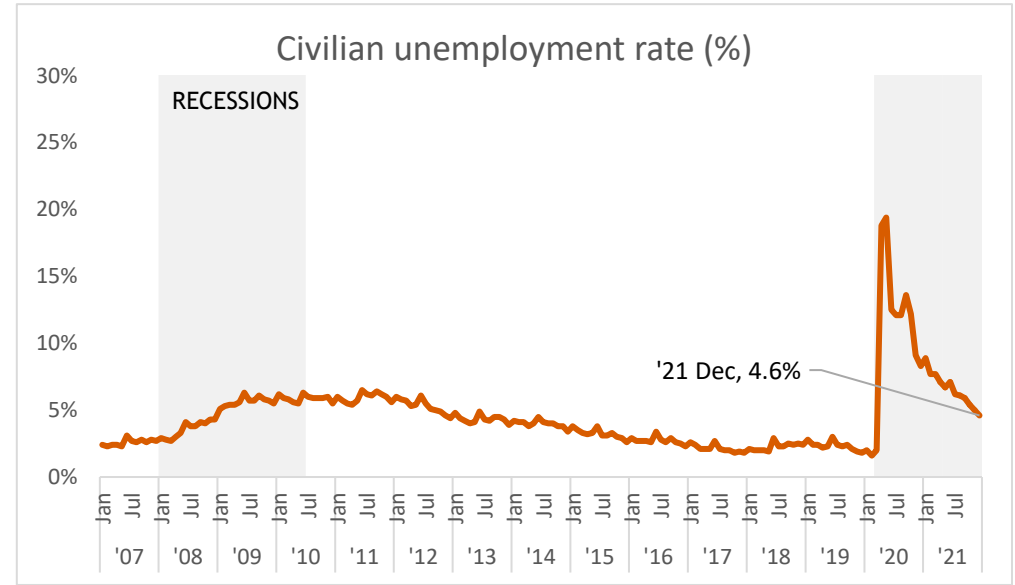
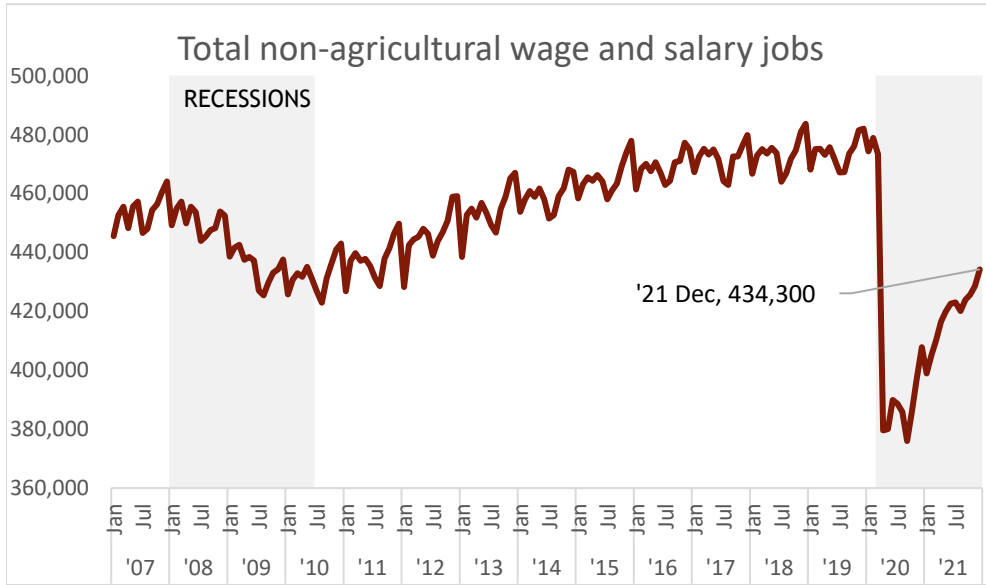
Claims, 2020-2022



Claims, 3-year comparison



## Labor Market Overview

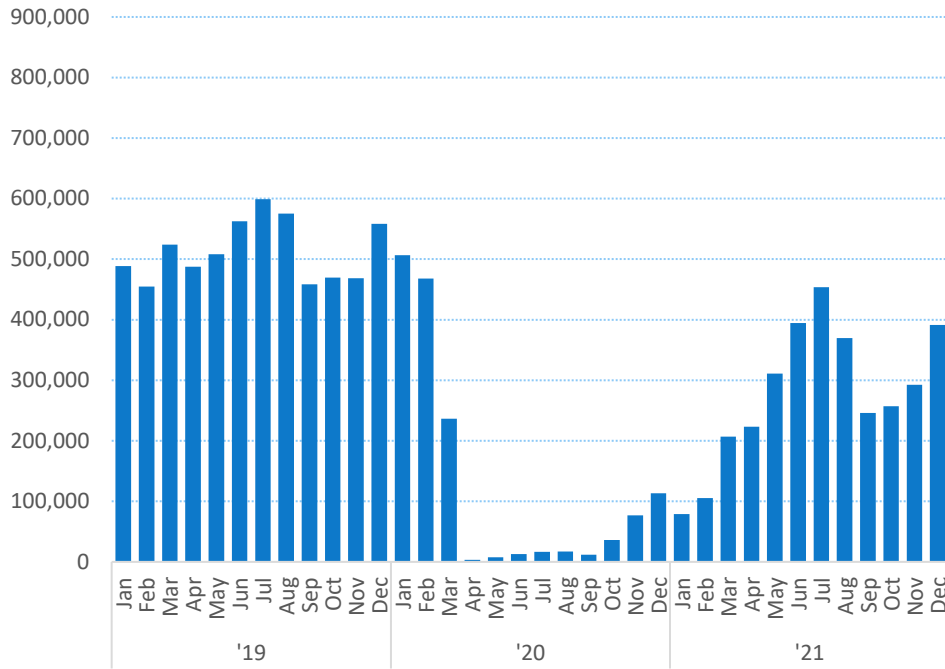


### Jobs by Industry

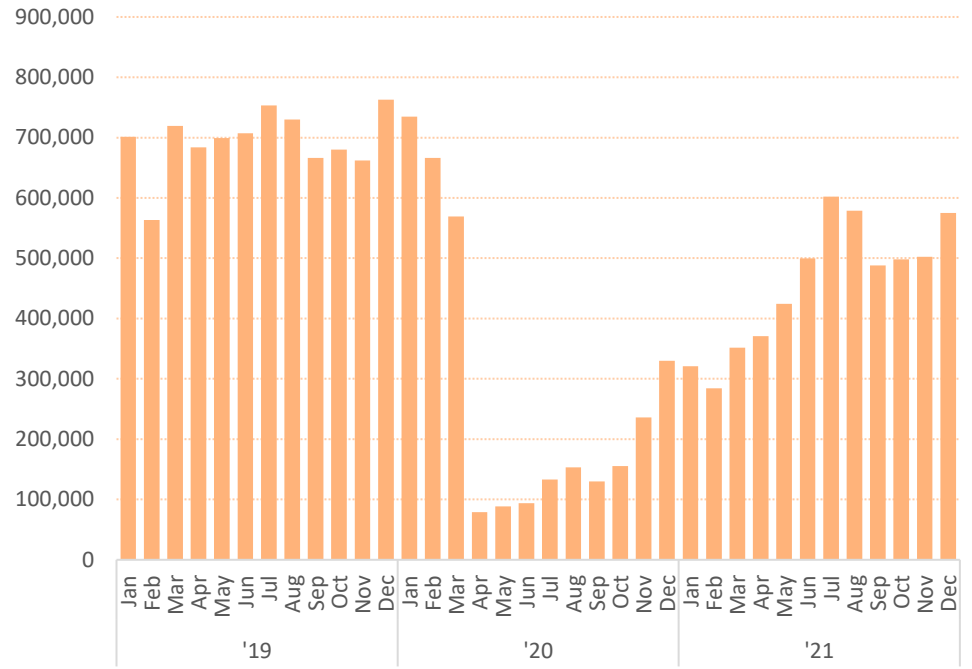
	Dec 2021	Dec 2020	Change from Dec 2020	% Change from Dec 2020	Job trend, Jan 2021 - Dec 2021
Total non-agriculture wage & salary	434,300	407,800	26,500	6.5	■
Professional & business services	57,200	52,300	4,900	9.4	■
Health care & social assistance	51,700	52,900	-1,200	-2.3	■
State government	48,600	47,600	1,000	2.1	■
Retail trade	41,500	39,900	1,600	4.0	■
Food services & drinking places	41,900	35,700	6,200	17.4	■
Federal government	31,800	32,400	-600	-1.9	■
Natural resources, mining & construction	27,400	26,500	900	3.4	■
Financial activities	22,200	21,600	600	2.8	■
Transportation, warehousing & utilities	22,800	19,700	3,100	15.7	■
Other services	17,100	16,900	200	1.2	■
Wholesale trade	14,300	13,200	1,100	8.3	■
Local government	11,400	11,900	-500	-4.2	■
Educational services	10,500	9,400	1,100	11.7	■
Accommodation	16,900	9,400	7,500	79.8	■
Manufacturing	8,900	8,700	200	2.3	■
Information	5,500	5,500	0	0.0	■
Arts, entertainment & recreation	4,600	4,200	400	9.5	■

# Tourism Overview

## Total visitor arrivals by air

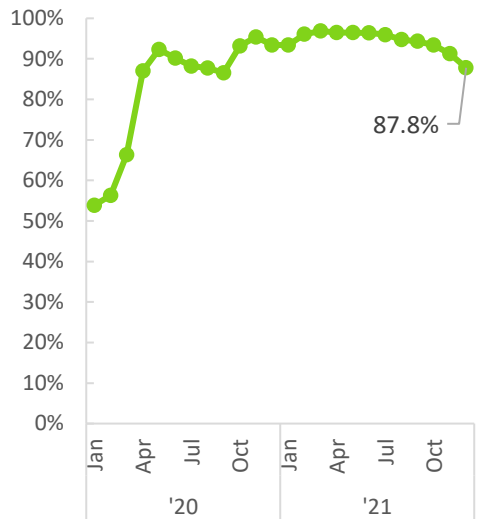


## Total airseats

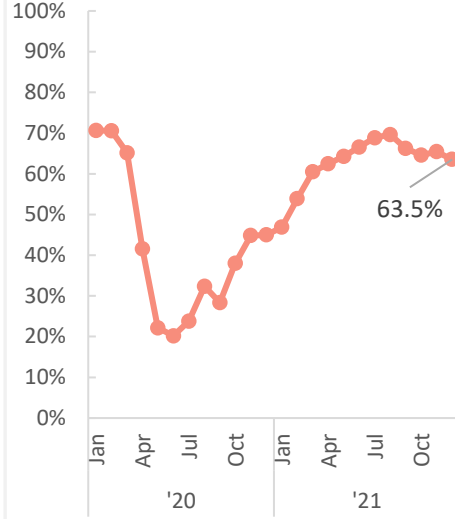


Honolulu airport; excludes inter-island airseats.

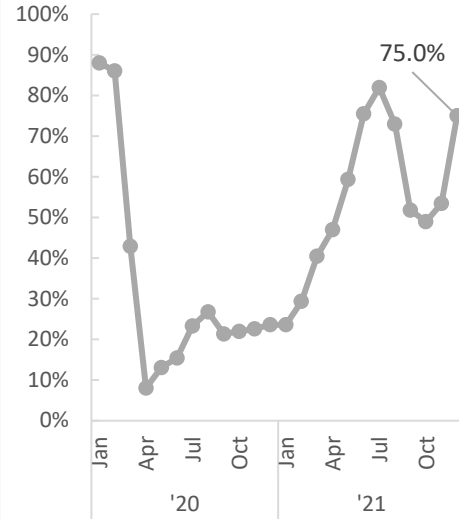
## US mainland visitors (% of total arrivals)



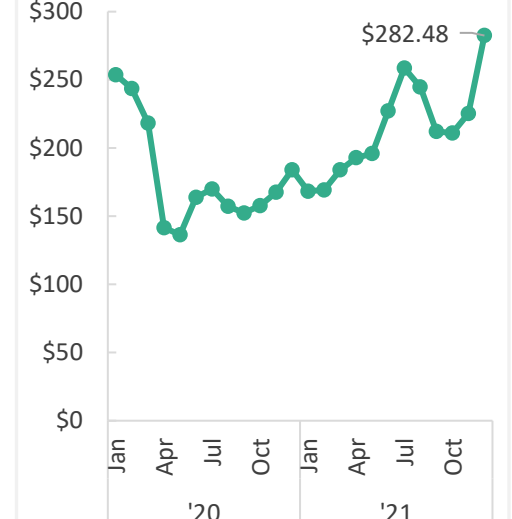
## Visitors staying in hotels (%)



## Hotel occupancy (%)



## Average hotel room rate (\$)

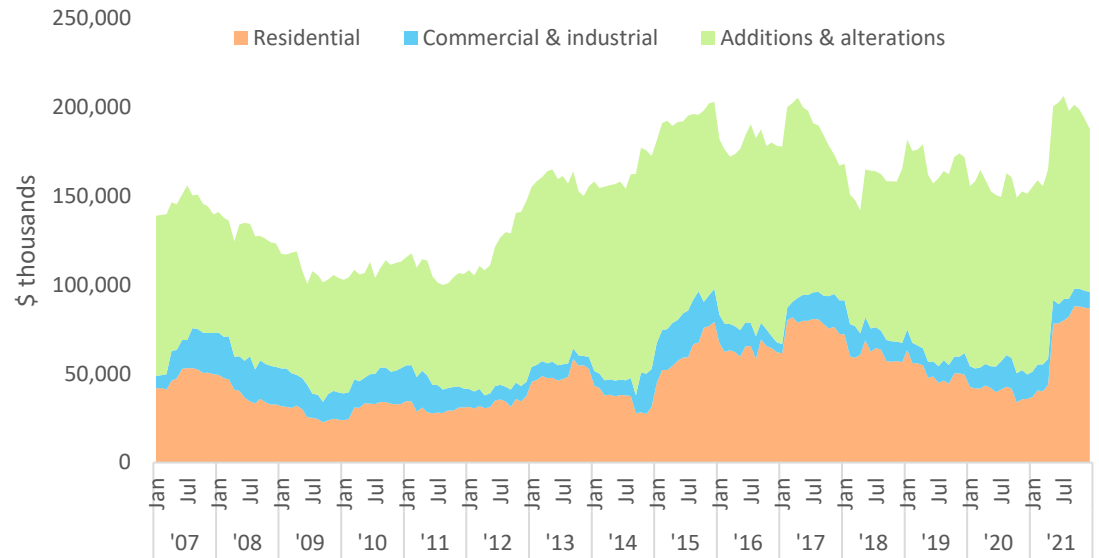


## Construction

	Dec. 2021	Dec. 2020	% Change from Dec. 2020
<b>Total private permits</b>	79,388	150,716	-47.3
<b>Residential</b>	26,466	29,460	-10.2
<b>Commercial &amp; industrial</b>	425	4,235	-90.0
<b>Additions &amp; alterations</b>	52,497	117,021	-55.1

Permit values in \$ thousands.

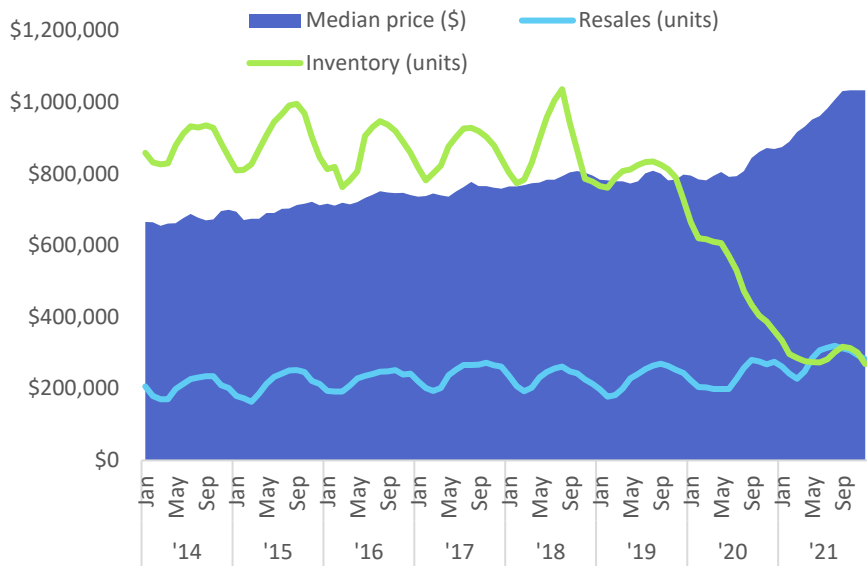
### Private building permits (values in \$ thousands)\*



\*12 month moving average

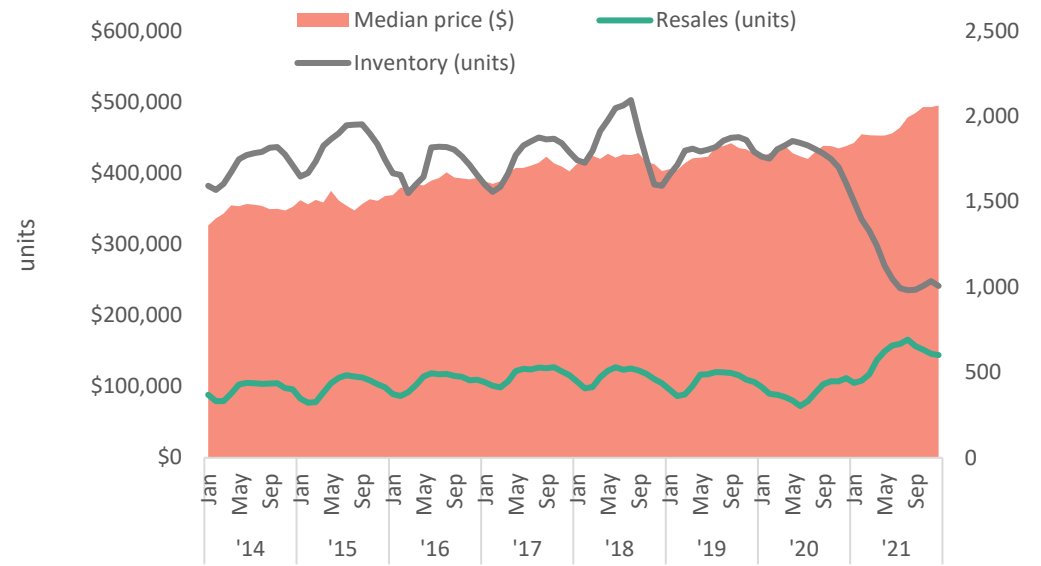
## Housing Market

### Single family home market\*



\*3 month moving average

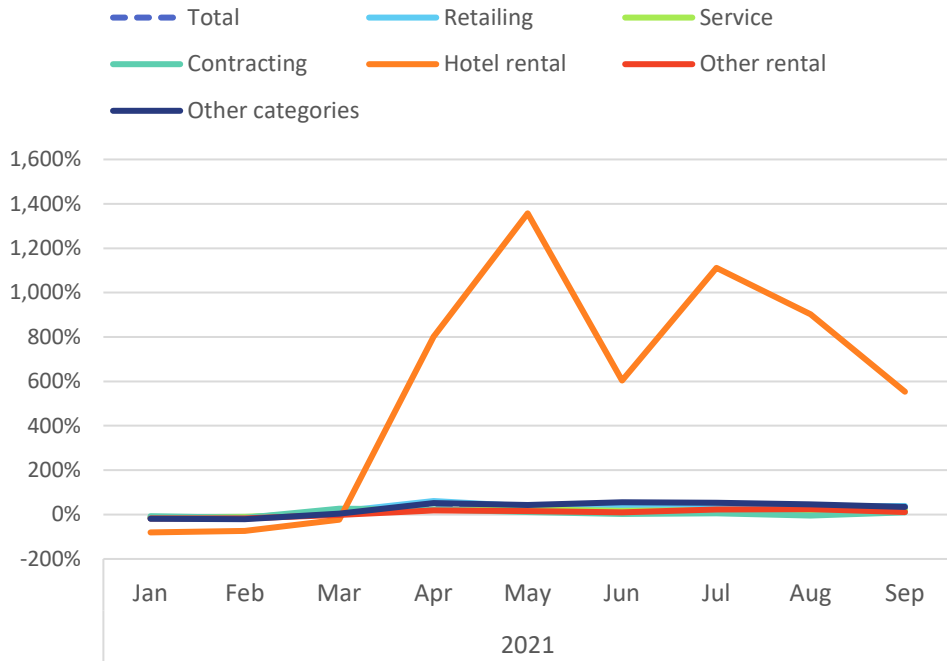
### Condo/Apartment/Townhouse market\*



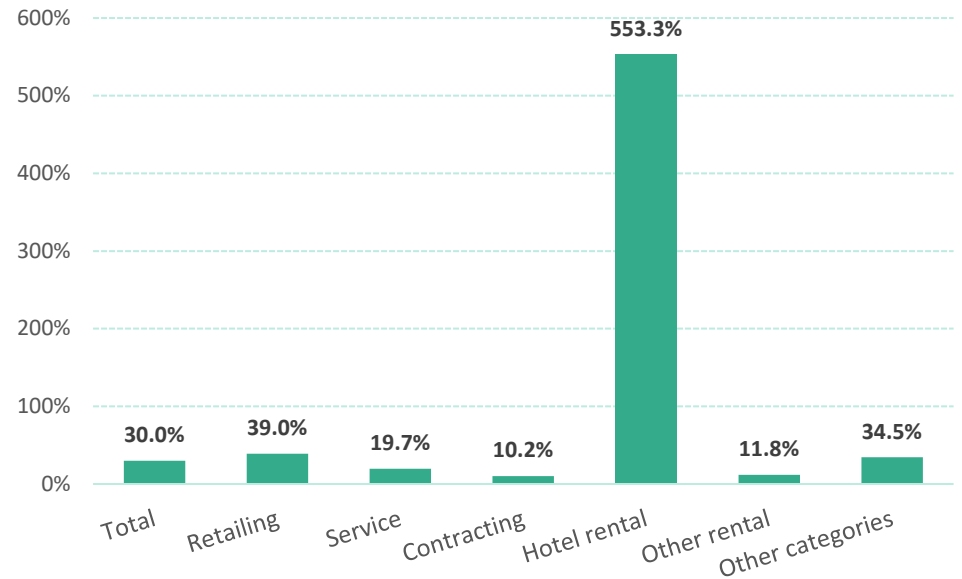
\*3 month moving average

# General Excise Tax Liability

% Change from same month prior year



By category (Sep. 2021)



## Data

Hawaii State Department of Health, [Hawaii COVID-19 Data](#)

Hawaii Emergency Management Agency, [COVID-19 Information Hub](#)

Hawaii Department of Business, Economic Development & Tourism, [Weekly Unemployment Updates](#)

Hawaii Department of Business, Economic Development & Tourism, [Economic Data Warehouse](#)

Hawaii Department of Business, Economic Development & Tourism, [Tourism Data Warehouse](#)

*Starting in August 2021, 2020 Decennial Census figures were used to calculate rates per 100,000 population for COVID-19 metrics. Prior to August 2021, U.S. Census Bureau Population Estimates were used.*

*"Completed" vaccinations are two doses of the Pfizer or Moderna vaccine or a single dose of the Johnson & Johnson vaccine.*