

QUARTERLY STATISTICAL & ECONOMIC REPORT

March 1997

Introduction

Part I - Economic Trends and Outlook

- State of the Economy
- Outlook of the Economy
- County Economic Conditions

Part II - Labor Force and Jobs - Overview

Part III - Income and Prices - Overview

Part IV - Tax Base and Revenues - Overview

Part V - Tourism - Overview

Part VI - Construction - Overview

Terms and Definitions

Archive

Statistics & Publications

This Quarterly Statistical and Economic Report has been prepared by the staff of the Research and Economic Analysis Division of the State Department of Business, Economic Development and Tourism (DBEDT). The report provides concise statistical information and analyses on Employment, Income and Prices, Taxes, Tourism, and Construction, as well as an overview of the four Hawaii State Counties.

The Department is headed by director, Dr. Seiji F. Naya. This report was prepared under the direction of the division administrator, Dr. Pearl Imada Iboshi. Dr. Tu Duc Pham, Econometric Research Branch Chief, was in charge of the project.

Technical notes and source descriptions have been kept to a minimum. However, the staff of the Research and Economic Analysis Division would be happy to respond to any inquiries of a technical nature that readers may have (586-2466). The information contained in this report reflects data received by the Research Division on or before March 1, 1996.

Quarterly Statistical & Economic Report

March 1997

STATE OF THE ECONOMY

Hawaii's economic recovery continues to be slow and uneven. Tourism, the most important sector of the economy, has rebounded since 1994. However, the number of visitor arrivals declined in the fourth quarter of 1996 and the 1997 first quarter numbers have not matched the record numbers of the first quarter of 1996. Jobs continued to fall in the fourth quarter of 1996, but there was some improvement in the first three months of 1997. Overall, current data suggest that the growth in the tourism industry will resume and the labor market will recover slightly in 1997.

While the number of visitor arrivals fell 2.0 percent from the fourth quarter of 1995 to the fourth quarter of 1996, visitor arrivals increased 2.9 percent for 1996 overall (table D-2). The fourth quarter decline was due solely to lower westbound arrivals. For 1996, eastbound arrivals increased 5.0 percent and westbound arrivals increased 1.5 percent (tables D-3 and D-4). Total visitor arrivals to Hawaii reached 6.8 million, about 200,000 less than the peak level recorded in 1990.

The decline in the number of visitor arrivals was partly due to the declining value of the Japanese yen versus the U.S. dollar and to higher hotel room rates. Higher room rates largely explain the increase of 15.8 percent in the hotel rental tax base (table C-11). As a result, the number of visitor arrivals declined 1.4 percent from the first quarter of 1996 to the first quarter of 1997. Data from the Hawaii Visitors and Convention Bureau also showed that the length of stay declined by 7.0 percent for eastbound visitors and 0.3 percent for westbound visitors. Overall, the average length of stay for all visitors declined from 9.07 days in the first quarter of 1996 to 8.87 days in the first quarter of 1997.

The decline of visitor arrivals and average length of stay in the first quarter of 1997 is reflected in a decline of hotel occupancy rates. For the first three months of 1997, hotel occupancy rates were 2.4

Introduction

Part I - Economic Trends and Outlook

- State of the Economy
- Outlook of the Economy
- County Economic Conditions

Part II - Labor Force and Jobs - Overview

Part III - Income and Prices - Overview

Part IV - Tax Base and Revenues - Overview

Part V - Tourism - Overview

Part VI - Construction - Overview

Terms and Definitions

Archive

Statistics & Publications

percentage points lower than the rate experienced in the first three months of 1996. Although the number of visitor arrivals increased in 1996, the hotel occupancy rate was 1.2 percentage points lower than the average occupancy rate for 1995 (table D-7). Again, this was due to higher room rates and lower value of the Japanese yen.

In 1996 the value of private building authorizations declined 27.0 percent (table E-2). Among these, the value of residential building construction permits declined 34.7 percent, commercial and industrial building permit values dropped 31.4 percent, and additions and alterations declined 9.5 percent. In contrast to private construction authorizations, government contracts awarded increased 80.7 percent (table E-2).

The value of the construction tax base increased 4.8 percent in 1996 (table 1). This increase was mainly due to a change in the way the state collects general excise taxes. The state's largest taxpayers of the general excise tax were required to pay via electronic fund transfer and thus more taxes than usual were collected in March and April 1996 when the program was initiated. The increase in the construction tax base was also due to increases in the construction cost index. Construction costs for a single-family residence increased 6.1 percent from 1995 to 1996 (table E-5). Over the same period, construction costs for high-rise buildings rose 2.4 percent (table E-6). Adjusted for inflation and electronic fund transfer, construction output actually declined about 2 to 3 percent from 1995 to 1996. The decline was partly due to the 12.4 percent decline in state capital improvement projects expenditures in 1996.

In contrast to the increase in the value of the construction tax base, construction jobs declined. In 1996, the number of wage and salary jobs in the construction industry fell 10.8 percent (table A-6). This decline may indicate either an increase in productivity or growth in the number of proprietors in the industry.

On the other hand, there was some good economic news as well. The agricultural sector showed some improvement in 1996. The GET base for producing increased 4.7 percent, reversing the 2.1 percent decline in 1995 (table C-12). Agricultural wage and salary jobs showed a 1.4 percent increase in 1996 (table A-19). This increase occurred despite a drop in the number of sugar cane field jobs.

State general fund tax revenues grew 7.1 percent from 1995 to 1996 (table C-2). However, the first three months of 1997 showed a decline of 5.0 percent. This decline is due in part to the lowering of the maximum income withholding rate for wages from 10 percent to 8 percent, which started in October 1996.

General excise and use tax collections increased 6.0 percent in 1996. This is the largest year-to-year growth since 1990. Data for the 1997 first quarter indicate a decline of 5.6 percent from the same period last year. This reflects the larger than usual general excise tax collections in March 1996, as previously discussed.

Net individual income tax revenues grew by 8.3 percent in 1996 (table C-1). However, the gain was largely due to the \$54.6 million decline in refunds. The decline in tax refunds resulted from changes in the tax laws that eliminated the general excise, medical services, and food tax credits. The lowering of the maximum income withholding rate for wages from 10 to 8 percent also resulted in lower tax collections by about \$18 million from October to December 1996.

According to the Hawaii Department of Labor and Industrial Relations (DLIR), the total number of non-agricultural wage and salary jobs declined 0.7 percent in 1996, continuing the trend of declining jobs since the fourth quarter of 1992 (table A-5). However, for the first three months of 1997, the total number of wage and salary jobs showed no change over the same period in 1996.

The civilian labor force has experienced positive growth since the first quarter of 1996 (table A-1). Although the number of persons employed increased 1.8 percent in 1996 (table A-2), the unemployment rate was still 0.5 percent higher than the 1995 rate (table A-4). This is because the number of unemployed has increased faster than the increase in the civilian labor force (tables A-1 and A-3).

In spite of the lower number of visitor arrivals, the number of jobs in hotel services grew 3.4 percent in the fourth quarter of 1996 over the fourth quarter of 1995, and grew by 1.9 percent for 1996 as a whole (table A-15). This increase continued at a 3.8 percent rate for the first three months of 1997. Besides hotels, other industries that showed increases in jobs included: services other than hotel, transportation, communications, and utilities. These increases offset job losses in

other industries.

In 1996, the average number of jobs in the construction industry was 23,500, a decline of 10.8 percent from 1995 (table A-6). For the first three months of 1997, the number of jobs in the industry was 21,900, or 7.8 percent below the first three months of 1996. Other industries which experienced loss in jobs in 1996 were manufacturing, retail and wholesale trade, and finance, insurance and real estate.

The number of government jobs in 1996 also declined 1.2 percent, mainly due to the 2.7 percent decline in state government jobs (tables 1 and A-17). However, government jobs showed a slight increase of 0.1 percent for the first quarter of 1997.

Quarterly Statistical & Economic Report

March 1997

OUTLOOK OF THE ECONOMY

As a rule, Hawaii's economic growth has depended primarily on the health of the U.S. economy—particularly the economy of the State of California—and the Japan economy. However, Hawaii's recent economic growth rates have remained low despite relatively strong growth in these external economies. The Blue Chip national economic forecast, which represents the consensus of about 50 top national forecasters, anticipates that the U.S. economy will continue to grow at a moderate rate through 1997. After an increase of 2.0 percent in 1995, Real Gross Domestic Product (GDP) is estimated to grow by 2.4 percent in 1996 and is expected to increase by 2.2 percent in 1997. The latest Blue Chip Economic Indicators (April 10, 1997) forecast that the U.S. unemployment rate will decline slightly to 5.3 percent in 1997, from 5.4 percent in 1996.

In real terms, the California economy grew 6.5 percent in 1996 and is expected to grow by 3.6 percent in 1997.

The Blue Chip consensus for Japan's economic growth is 1.9 percent for 1997. In 1998, Japan's economy is expected to expand by 2.7 percent. The value of the yen is expected to fall slightly to 116 yen per U.S. dollar in 1997, down from 112 yen in 1996.

In the past, these relatively positive conditions in our major visitor markets would translate into continued economic recovery for the state. However, visitor arrivals have slowed in recent months. For this reason, DBEDT has lowered its estimate of visitor growth to 2.0 percent in 1997 from the 3.0 percent estimate reported in the December 1996 issue of *Quarterly Statistical and Economic Report*.

DBEDT expects inflation, as measured by changes in the Honolulu Consumer Price Index, to remain low at about 1.5 percent in 1997.

Because of the unusually low growth in personal income during the

Introduction

Part I - Economic Trends and Outlook

- State of the Economy
- Outlook of the Economy
- County Economic Conditions

Part II - Labor Force and Jobs - Overview

Part III - Income and Prices - Overview

Part IV - Tax Base and Revenues - Overview

Part V - Tourism - Overview

Part VI - Construction - Overview

Terms and Definitions

Archive

Statistics & Publications

first nine months of 1996, and continuing declines in the number of jobs, DBEDT has revised its estimates of annual Real Gross State Product growth to 0.9 percent in 1996. For 1997, Real Gross State Product is expected to increase 1.3 percent rather than 2.0 percent as reported in the December 1996 issue of *Quarterly Statistical and Economic Report*.

**ACTUAL FORECASTED KEY ECONOMIC INDICATORS FOR HAWAII:
1995 TO 2000**

Economic Indicators	1995 (actual)	1996 (actual)	1997 (forecast)	1998 (forecast)	1999 (forecast)	2000 (forecast)
TOTAL POPULATION (in thousands)	1,179.2	1,183.7	1,190.8	1,202.7	1,214.7	1,226.9
VISITOR ARRIVALS (in thousands)	6,629.2	6,823.1	6,959.6	7,203.1	7,455.3	7,716.2
HONOLULU CPI-U (1982-84=100)	168.1	170.7	173.3	176.7	181.1	186.6
PERSONAL INCOME (in million dollars)	29,184.1	29,782.0	30,586.1	31,717.8	33,208.5	34,935.4
PERSONAL INCOME (in \$1987 million)	19,945.7	20,028.2	20,248.5	20,572.5	21,004.5	21,466.6
TOTAL JOBS (in thousands)	576.2	570.4	573.3	581.9	593.5	606.0
GROSS STATE PRODUCT (in million dollars)	32,723.7	33,509.1	34,447.3	35,790.8	37,508.7	39,534.2
REAL GROSS STATE PRODUCT (in \$1987 million)	23,297.8	23,504.4	23,805.4	24,248.9	24,793.0	25,370.7
GROSS STATE PRODUCT DEFLATOR (1987=100)	140.5	142.6	144.7	147.6	151.3	155.8
Annual Percentage Growth						
TOTAL POPULATION (in thousands)	0.6	0.4	0.6	1.0	1.0	1.0
VISITOR ARRIVALS (in thousands)	3.2	2.9	2.0	3.5	3.5	3.5
HONOLULU CPI-U (1982-84=100)	2.2	1.5	1.5	2.0	2.5	3.0
PERSONAL INCOME (in million dollars)	3.1	2.0	2.7	3.7	4.7	5.2

PERSONAL INCOME (in \$1987 million)	0.9	0.4	1.1	1.6	2.1	2.2
TOTAL JOBS (in thousands)	(1.0)	(1.0)	0.5	1.5	2.0	2.1
GROSS STATE PRODUCT (in million dollars)	2.4	2.4	2.8	3.9	4.8	5.4
REAL GROSS STATE PRODUCT (in \$1987 million)	0.5	0.9	1.3	1.9	2.2	2.3
GROSS STATE PRODUCT DEFLATOR (1987=100)	1.9	1.5	1.5	2.0	2.5	3.0

Quarterly Statistical & Economic Report

March 1997

COUNTY ECONOMIC CONDITIONS

Economic performance of the individual counties was mixed in 1996. Visitor arrivals rose in all counties. Maui experienced a 0.9 percent increase in visitor arrivals in 1996 relative to 1995 (table 4). The number of visitors to Hawaii county grew 13.3 percent (table 3), Kauai added 5.9 percent (table 5), and Honolulu had 3.1 percent growth in visitors over the same period (table 2). Hotel occupancy declined 2.4 percentage points in Honolulu (to 81.5 percent) in 1996 compared to a year earlier, but Hawaii and Kauai counties saw increases in their occupancy rates to 64.6 percent and 67.4 percent, respectively (tables 3 and 5). The Maui hotel occupancy rate showed an insignificant 0.1 percentage point decline (table 4).

As a result of high tourism growth, Hawaii county showed significant improvement in the labor market. The number of wage and salary jobs rose 1.7 percent from 1995 to 1996, the first significant increase since 1991. Honolulu county experienced a 1.1 percent job loss during 1996, followed by Kauai (-0.4 percent). Maui county showed a small increase in jobs (0.3 percent). All counties experienced increases in civilian employment. Honolulu and Kauai experienced a slight rise in the unemployment rate, while the unemployment rate fell in Hawaii and Maui counties.

Consistent with visitor arrivals, all counties except Maui experienced job gains in hotels in 1996. Maui county lost 0.5 percent of its hotel jobs in 1996 relative to 1995. The number of hotel jobs in Honolulu grew by 0.3 percent, Hawaii county gained 8.1 percent, and Kauai had growth of 9.5 percent in hotel jobs during 1996. All the counties except Kauai gained jobs in agriculture. Kauai lost 10.5 percent of agricultural wage and salary jobs in 1996.

The statewide increase in GET collections of 6.0 percent from 1995 to 1996 (table C-3) was due to the 9.4 percent increase in the City and County of Honolulu. The GET base fell 10.1 percent in Maui county,

Introduction

Part I - Economic Trends and Outlook

- State of the Economy
- Outlook of the Economy
- County Economic Conditions

Part II - Labor Force and Jobs - Overview

Part III - Income and Prices - Overview

Part IV - Tax Base and Revenues - Overview

Part V - Tourism - Overview

Part VI - Construction - Overview

Terms and Definitions

Archive

Statistics & Publications

19.0 percent in Hawaii county, and 14.1 percent in Kauai county. However, recent changes in the method of collections may have caused underreporting of economic activity on the Neighbor Islands.

[Download a spreadsheet file of Tables 1-5.](#) (tbls1-5-97.xls)

Table 1
SELECTED ECONOMIC ACTIVITIES: STATE

SERIES	UNIT	4th QUARTER 1996		YEAR-TO-DATE	
		NUMBER	% CHANGE YEAR AGO	NUMBER	% CHANGE YEAR AGO
CIVILIAN LABOR FORCE 1/	1,000	594.8	2.7	590.9	2.4
Civilian Employment	1,000	558.3	2.1	553.2	1.8
Civilian Unemployment	1,000	36.5	12.4	37.7	11.4
UNEMPLOYMENT RATE 2/	%	6.1	0.5	6.4	0.6
TOTAL NON-AGR. WAGE & SALARY 1/	1,000	531.3	-0.3	529.3	-0.7
Contract Construction	1,000	22.5	-12.8	23.5	-10.8
Manufacturing	1,000	16.5	-3.5	16.6	-2.4
Trans., Comm., Utilities	1,000	41.3	1.2	41.0	0.6
Trade	1,000	136.3	-0.8	135.3	-0.4
Retail	1,000	114.7	-0.9	113.8	-0.4
Finance, Insur., & Real Estate	1,000	36.6	-1.3	36.8	-0.9
Services & Miscellaneous	1,000	167.5	1.9	166.1	1.0
Hotels	1,000	39.0	3.4	38.5	1.9
Government	1,000	110.9	0.0	110.2	-1.2
State	1,000	63.5	-0.4	62.3	-2.7
Federal	1,000	30.9	0.2	31.3	0.6
AGRICULTURE WAGES AND SALARIES	1,000	7.7	-0.6	7.4	1.4
STATE GENERAL FUND TAX					
REVENUES	\$MILL	668.0	1.3	2,800.0	7.1
TRANS. ACCOM. TAX REVENUES	\$MILL	27.2	9.9	124.0	17.4
GENERAL EXCISE & USE TAX BASE	\$MILL	11,700.1	4.1	48,337.1	6.1
Retailing Tax Base	\$MILL	3,810.8	3.1	16,091.4	6.9
Services Tax Base	\$MILL	1,331.7	0.4	5,618.0	5.0
Contracting Tax Base	\$MILL	807.6	-4.4	3,285.1	4.8
Hotel Rental Tax Base	\$MILL	473.5	13.6	2,057.8	15.8
Producing Tax Base	\$MILL	121.8	12.3	479.0	4.7
VISITOR ARRIVALS 3/	PERSONS	1,605,870	-2.0	6,823,130	3.6
Westbound Visitors	PERSONS	919,670	-4.8	3,991,640	1.5
Eastbound Visitors	PERSONS	686,200	2.1	2,831,490	6.6
HOTEL OCCUPANCY RATES 2/	%	71.0	-4.4	76.0	-0.6

Notes: 1/ Labor force and jobs averages are based on monthly rounded data. Labor force data were also rebenchmarked in February of 1997. Self-employed data are no longer published by DLIR.

2/ Change represents absolute change in rates rather than percentage change in rates.

3/ 1996 figures are preliminary, therefore the growth rates were computed based on the 1995 preliminary (rather than the final) figures. These percentage growth rates differ from the percentage growth rates shown in tables D-1, D-2, and D-4 which are based on the final 1995 figures.

Sources: Hawaii Dept. of Labor & Industrial Relations; Dept. of Taxation; Hawaii Visitors and Convention Bureau; and PKF-Hawaii. Compiled by Economic Planning Information System, READ, DBEDT.

Table 2

SELECTED ECONOMIC ACTIVITIES: CITY AND COUNTY OF HONOLULU

SERIES	UNIT	4th QUARTER 1996		YEAR-TO-DATE	
		NUMBER	% CHANGE YEAR AGO	NUMBER	% CHANGE YEAR AGO
CIVILIAN LABOR FORCE 1/	1,000	429.6	2.6	427.4	2.1
Civilian Employment	1,000	407.5	2.0	404.8	1.3
Civilian Unemployment	1,000	22.1	14.5	22.6	17.4
UNEMPLOYMENT RATE 2/	%	5.1	0.6	5.3	0.7
TOTAL NON-AGR. WAGE & SALARY	1,000	404.6	-1.0	403.9	-1.1
Contract Construction	1,000	16.8	-15.2	17.8	-12.3
Manufacturing	1,000	12.7	-3.1	12.8	-1.5
Trans., Comm., Utilities	1,000	33.4	0.8	33.1	-0.2
Trade	1,000	101.9	-1.2	101.3	-0.2
Retail	1,000	83.8	-1.5	83.3	-0.4
Finance, Insur., & Real Estate	1,000	29.6	-2.0	29.8	-2.0
Services & Miscellaneous	1,000	121.1	1.0	120.5	0.2
Hotels	1,000	18.4	2.8	18.2	0.3
Government	1,000	89.2	-0.2	88.7	-1.3
State	1,000	48.9	-0.6	47.7	-3.2
Federal	1,000	29.1	0.0	29.5	0.7
AGRICULTURE WAGES AND SALARIES	1,000	2.2	2.4	2.1	5.1
TRANS. ACCOM. TAX REVENUES	\$MILL	20.7	20.6	91.1	23.8
GENERAL EXCISE & USE TAX BASE	\$MILL	10,512.3	8.7	42,830.1	9.4
Retailing Tax Base	\$MILL	3,430.7	8.1	14,322.5	11.3
Services Tax Base	\$MILL	1,147.9	3.1	4,811.9	6.9
Contracting Tax Base	\$MILL	700.5	-0.9	2,827.3	8.7
Hotel Rental Tax Base	\$MILL	385.6	29.9	1,594.6	24.5
Producing Tax Base	\$MILL	100.7	25.1	357.2	17.6
VISITOR ARRIVALS 3/	PERSONS	1,176,260	-2.0	4,981,820	3.1
Westbound Visitors	PERSONS	532,710	-7.5	2,350,110	0.9
Eastbound Visitors	PERSONS	643,550	3.2	2,631,710	5.1
HOTEL OCCUPANCY RATES 2/	%	77.3	-3.1	81.5	-2.4

Notes: 1/ Labor force and jobs averages are based on monthly rounded data. Labor force data were also rebenchmarked in February of 1997. Self-employed data are no longer published by DLIR.

2/ Change represents absolute change in rates rather than percentage change in rates.

3/ Preliminary data.

Sources: Hawaii Dept. of Labor & Industrial Relations; Dept. of Taxation; Hawaii Visitors and Convention Bureau; and PKF-Hawaii. Compiled by Economic Planning Information System, READ, DBEDT.

Table 3
SELECTED ECONOMIC ACTIVITIES: HAWAII COUNTY

SERIES	UNIT	4th QUARTER 1996		YEAR-TO-DATE	
		NUMBER	% CHANGE YEAR AGO	NUMBER	% CHANGE YEAR AGO
CIVILIAN LABOR FORCE 1/	1,000	67.5	5.1	66.9	4.1
Civilian Employment	1,000	61.4	5.0	60.2	4.4
Civilian Unemployment	1,000	6.1	5.8	6.7	1.5
UNEMPLOYMENT RATE 2/	%	9.0	0.1	9.9	-0.3
TOTAL NON-AGR. WAGE & SALARY	1,000	48.6	2.7	47.9	1.7
Contract Construction	1,000	2.5	-2.0	2.4	-7.8
Manufacturing	1,000	1.6	-11.1	1.7	-5.7
Trans., Comm., Utilities	1,000	2.6	2.0	2.6	0.0
Trade	1,000	12.8	1.2	12.6	-0.8
Retail	1,000	11.2	1.8	10.9	-0.5
Finance, Insur., & Real Estate	1,000	2.6	2.0	2.6	8.3
Services & Miscellaneous	1,000	16.4	8.6	16.1	7.0
Hotels	1,000	6.3	12.5	6.0	8.1
Government	1,000	10.1	0.0	10.1	0.0
State	1,000	7.1	-0.7	7.0	-1.4
Federal	1,000	0.9	0.0	0.9	0.0
AGRICULTURE WAGES AND SALARIES	1,000	2.7	0.0	2.6	4.1
TRANS. ACCOM. TAX REVENUES	\$MILL	1.2	-35.1	6.5	-27.8
GENERAL EXCISE & USE TAX BASE	\$MILL	452.7	-26.2	2,103.4	-19.0
Retailing Tax Base	\$MILL	140.5	-32.6	658.2	-25.1
Services Tax Base	\$MILL	77.8	-20.5	354.4	-7.6
Contracting Tax Base	\$MILL	44.7	-21.7	188.2	-13.5
Hotel Rental Tax Base	\$MILL	8.3	-71.1	73.2	-47.4
Producing Tax Base	\$MILL	16.3	-7.1	86.6	-15.4
VISITOR ARRIVALS 3/	PERSONS	310,530	15.2	1,227,840	13.3
Westbound Visitors	PERSONS	215,650	1.9	880,180	3.5
Eastbound Visitors	PERSONS	94,880	63.4	347,660	49.3
HOTEL OCCUPANCY RATES 2/	%	62.3	1.2	64.4	3.7

Notes: 1/ Labor force and jobs averages are based on monthly rounded data. Labor force data were also rebenchmarked in February of 1997. Self-employed data are no longer published by DLIR.

2/ Change represents absolute change in rates rather than percentage change in rates.

3/ Preliminary data.

Sources: Hawaii Dept. of Labor & Industrial Relations; Dept. of Taxation; Hawaii Visitors and Convention Bureau; and PKF-Hawaii. Compiled by Economic Planning Information System, READ, DBEDT.

Table 4

SELECTED ECONOMIC ACTIVITIES: MAUI COUNTY

SERIES	UNIT	4th QUARTER 1996		YEAR-TO-DATE	
		NUMBER	% CHANGE YEAR AGO	NUMBER	% CHANGE YEAR AGO
CIVILIAN LABOR FORCE 1/	1,000	68.4	4.0	67.7	2.7
Civilian Employment	1,000	63.5	3.8	62.8	2.8
Civilian Unemployment	1,000	4.9	5.0	5.0	3.1
UNEMPLOYMENT RATE 2/	%	7.2	0.1	7.3	0.0
TOTAL NON-AGR. WAGE & SALARY	1,000	54.5	1.6	54.1	0.3
Contract Construction	1,000	2.1	-6.8	2.2	4.9
Manufacturing	1,000	1.7	0.0	1.8	0.0
Trans., Comm., Utilities	1,000	3.8	8.7	3.7	5.8
Trade	1,000	14.8	-1.0	14.8	-1.7
Retail	1,000	13.4	-1.1	13.5	-1.5
Finance, Insur., & Real Estate	1,000	3.0	3.5	2.9	0.0
Services & Miscellaneous	1,000	21.8	3.3	21.4	0.0
Hotels	1,000	10.9	1.4	10.9	-0.5
Government	1,000	7.5	1.4	7.5	0.7
State	1,000	5.1	2.0	5.0	-1.0
Federal	1,000	0.5	0.0	0.5	0.0
AGRICULTURE WAGES AND SALARIES	1,000	2.0	2.6	2.0	2.6
TRANS. ACCOM. TAX REVENUES	\$MILL	4.5	-7.9	21.7	8.8
GENERAL EXCISE & USE TAX BASE	\$MILL	553.0	-23.2	2,519.5	-10.1
Retailing Tax Base	\$MILL	180.1	-23.2	830.7	-12.9
Services Tax Base	\$MILL	79.6	-7.3	323.7	-2.6
Contracting Tax Base	\$MILL	43.1	-7.0	181.7	-3.6
Hotel Rental Tax Base	\$MILL	66.1	-15.1	327.5	8.3
Producing Tax Base	\$MILL	4.1	-44.4	25.2	-31.0
VISITOR ARRIVALS 3/	PERSONS	537,180	-4.5	2,327,220	0.9
Westbound Visitors	PERSONS	418,410	-6.6	1,824,700	-1.7
Eastbound Visitors	PERSONS	118,770	3.7	502,520	11.4
HOTEL OCCUPANCY RATES 2/ 4/	%	66.7	-5.8	73.4	-0.1

Notes: 1/ Labor force and jobs averages are based on monthly rounded data. Labor force data were also rebenchmarked in February of 1997. Self-employed data are no longer published by DLIR.

2/ Change represents absolute change in rates rather than percentage change in rates.

3/ Preliminary data.

4/ Data represents Maui island only.

Sources: Hawaii Dept. of Labor & Industrial Relations; Dept. of Taxation; Hawaii Visitors and Convention Bureau; and PKF-Hawaii. Compiled by Economic Planning Information System, READ, DBEDT.

Table 5
SELECTED ECONOMIC ACTIVITIES: KAUAI COUNTY

SERIES	UNIT	4th QUARTER 1996		YEAR-TO-DATE	
		NUMBER	% CHANGE YEAR AGO	NUMBER	% CHANGE YEAR AGO
CIVILIAN LABOR FORCE 1/	1,000	29.4	3.0	29.0	2.1
Civilian Employment	1,000	25.9	1.8	25.5	1.4
Civilian Unemployment	1,000	3.5	12.8	3.5	7.7
UNEMPLOYMENT RATE 2/	%	12.0	1.0	12.1	0.6
TOTAL NON-AGR. WAGE & SALARY	1,000	23.6	-0.2	23.4	-0.4
Contract Construction	1,000	1.2	-8.0	1.2	-17.2
Manufacturing	1,000	0.5	-18.2	0.5	0.0
Trans., Comm., Utilities	1,000	1.6	0.0	1.6	0.0
Trade	1,000	6.8	3.0	6.6	-0.8
Retail	1,000	6.3	3.3	6.2	0.8
Finance, Insur., & Real Estate	1,000	1.5	3.4	1.5	3.6
Services & Miscellaneous	1,000	8.2	-0.6	8.1	2.5
Hotels	1,000	3.4	0.0	3.5	9.5
Government	1,000	4.0	0.0	4.0	-1.2
State	1,000	2.6	0.0	2.6	0.0
Federal	1,000	0.4	0.0	0.4	0.0
AGRICULTURE WAGES AND SALARIES	1,000	0.9	-14.3	0.9	-10.5
TRANS. ACCOM. TAX REVENUES 4/	\$MILL	0.8	-4.6	4.1	30.0
GENERAL EXCISE & USE TAX BASE	\$MILL	182.1	-23.9	884.2	-14.1
Retailing Tax Base	\$MILL	59.5	-25.4	280.1	-19.6
Services Tax Base	\$MILL	26.3	-9.1	128.1	-3.4
Contracting Tax Base	\$MILL	19.4	-44.2	87.9	-30.6
Hotel Rental Tax Base	\$MILL	13.4	1.1	62.5	14.7
Producing Tax Base	\$MILL	0.8	-75.7	10.1	-33.6
VISITOR ARRIVALS 3/	PERSONS	234,050	-2.0	969,140	5.9
Westbound Visitors	PERSONS	194,540	-2.6	825,110	4.5
Eastbound Visitors	PERSONS	39,510	1.4	144,030	14.9
HOTEL OCCUPANCY RATES 2/	%	60.1	-3.8	67.4	2.4

Notes: 1/ Labor force and jobs averages are based on monthly rounded data. Labor force data were also rebenchmarked in February of 1997. Self-employed data are no longer published by DLIR.

2/ Change represents absolute change in rates rather than percentage change in rates.

3/ Preliminary data.

4/ Tax exemption to providers of transient accommodations located in natural disaster areas sunsetted after 12/31/94 (Act 129, SLH 1993).

Sources: Hawaii Dept. of Labor & Industrial Relations; Dept. of Taxation; Hawaii Visitors and Convention Bureau; and PKF-Hawaii. Compiled by Economic Planning Information System, READ, DBEDT.

Quarterly Statistical & Economic Report

March 1997

LABOR FORCE AND JOBS

Labor force data between 1994 and 1996 were rebenchmarked in February 1997 by the Hawaii Department of Labor and Industrial Relations (DLIR). The rebenchmarked data show that the Hawaii labor force increased 2.4 percent in 1996 after a two-year decline (table A-1). Civilian employed persons also showed a gain of 1.8 percent in 1996 after declining for two years (table A-2). Since the labor force increased faster than jobs, the unemployment rate in 1996 rose to 6.4 percent, the highest figure since the 1982 recession (table A-4).

Non-agricultural wage and salary jobs continued to fall in the fourth quarter of 1996, making 1996 the fourth consecutive year of declining jobs (table A-5). Industries with wage and salary job loss in 1996 were: construction (-10.8%); state government (-2.7%); manufacturing (-2.4%); utilities (-1.3%); finance, insurance and real estate (-0.9%); wholesale trade (-0.5%); and retail trade (-0.4%). Industries with wage and salary job gains were: hotels (1.9%), communication (1.6%), agriculture (1.4%), local government (1.2%), services and miscellaneous (1.0%), transportation (0.7%), and federal government (0.6%).

The construction industry lost more than 10,000 jobs during the last five years, from 33,600 jobs in its peak year of 1991 to 23,500 in 1996. The industry lost about 2,800 jobs in 1996 alone (table A-6).

With the closure of sugar plantations on Hawaii and Oahu starting in 1993, the manufacturing industry experienced significant job loss. Manufacturing lost 2,600 jobs in the last three years. After a few years of preparing for diversification, agriculture gained jobs in 1996—the first gain since 1991 (table A-19).

State government pared 1,700 jobs from its payroll in 1996, after a reduction of 1,000 jobs in 1995.

Due to the lack of reliability in representing self-employment, the Department of Labor and Industrial Relations has stopped releasing data on self-employment. Thus, total jobs cannot be calculated. DBEDT is exploring methods of estimating self-employment, in order to resume the presentation of self-employment and total jobs in the future.

The construction industry lost more than 10,000 jobs during the last five years, from 33,600 jobs in its peak year of 1991 to 23,500 in 1996. The industry lost about 2,800 jobs in 1996 alone (table A-6).

Introduction

Part I - Economic Trends and Outlook

- State of the Economy
- Outlook of the Economy
- County Economic Conditions

Part II - Labor Force and Jobs - Overview

Part III - Income and Prices - Overview

Part IV - Tax Base and Revenues - Overview

Part V - Tourism - Overview

Part VI - Construction - Overview

Terms and Definitions

Archive

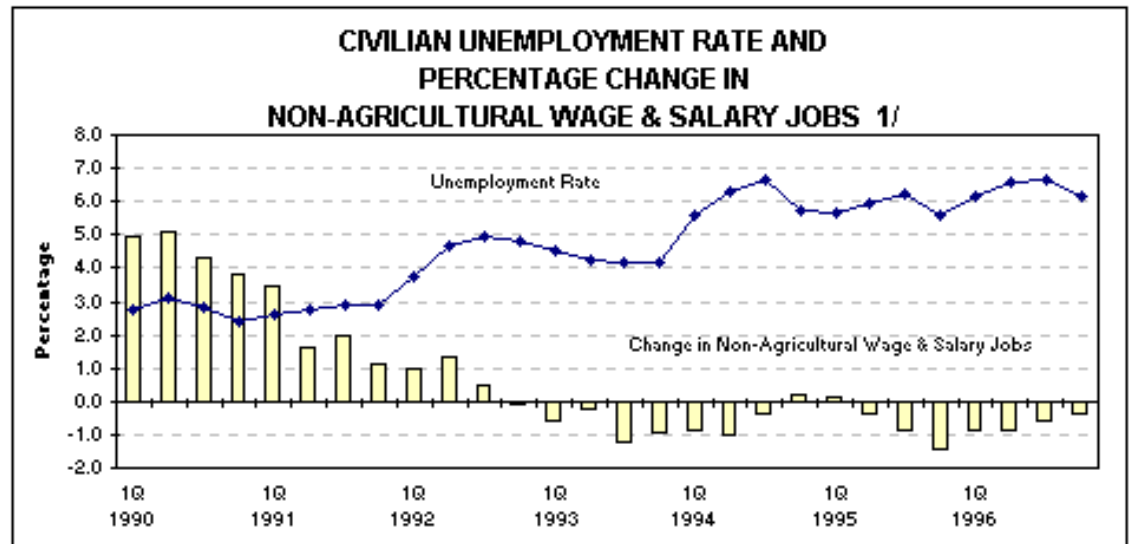
Statistics & Publications

With the closure of sugar plantations on Hawaii and Oahu starting in 1993, the manufacturing industry experienced significant job loss. Manufacturing lost 2,600 jobs in the last three years. After a few years of preparing for diversification, agriculture gained jobs in 1996—the first gain since 1991 (table A-19).

State government pared 1,700 jobs from its payroll in 1996, after a reduction of 1,000 jobs in 1995.

Due to the lack of reliability in representing self-employment, the Department of Labor and Industrial Relations has stopped releasing data on self-employment. Thus, total jobs cannot be calculated. DBEDT is exploring methods of estimating self-employment, in order to resume the presentation of self-employment and total jobs in the future.

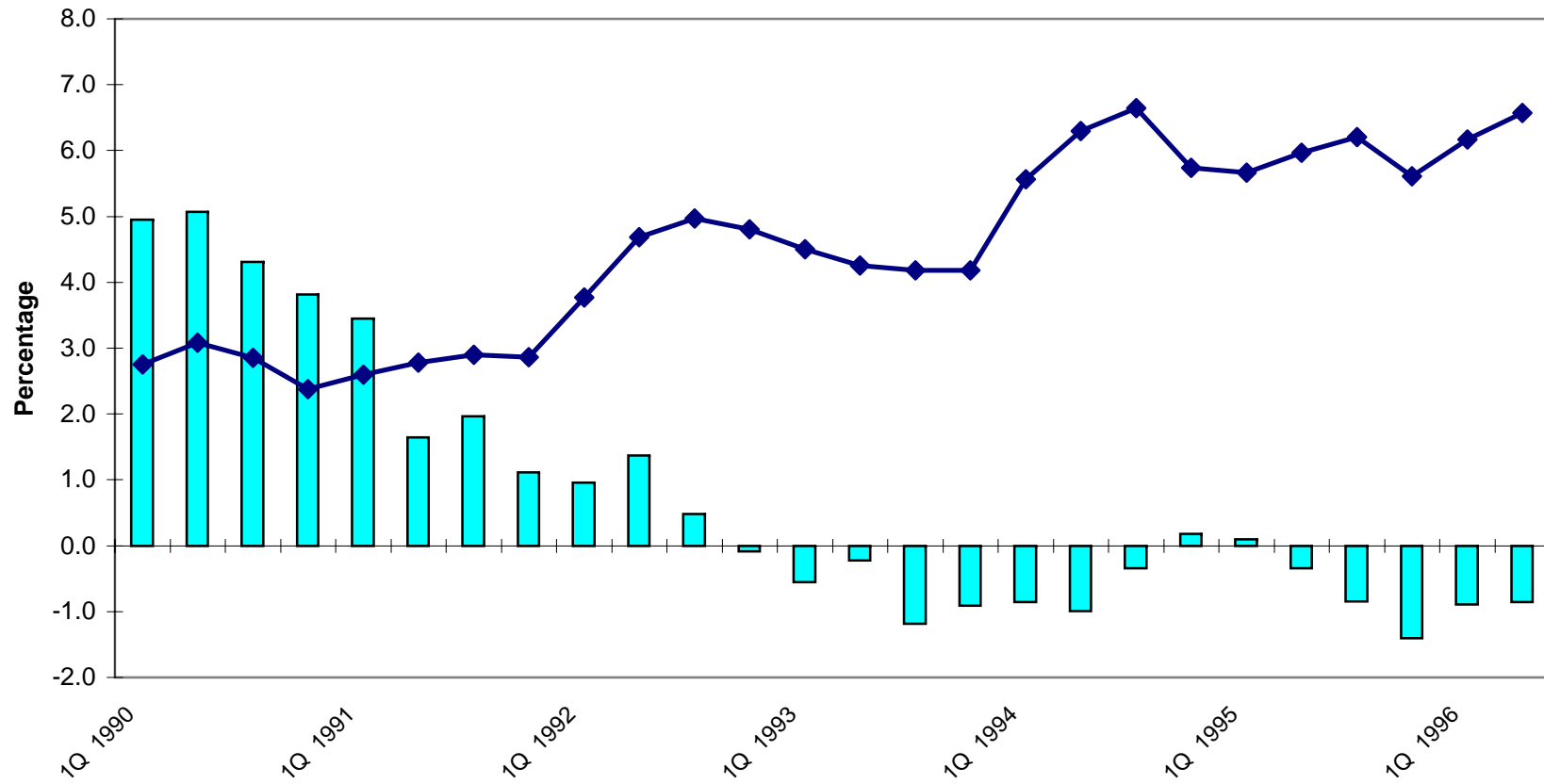
[Download a spreadsheet file of Tables A-1 through A-20.](#) (tables-a97.xls)



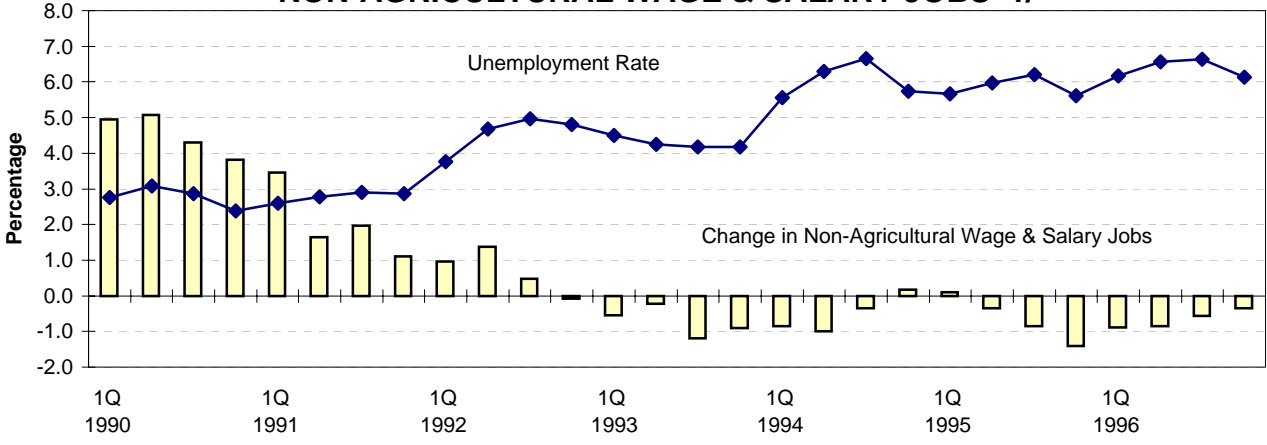
Source: Data compiled from tables A-3 (Civilian Unemployment Rate) and A-5 (Non-Agricultural Wage & Salary Jobs).

CIVILIAN UNEMPLOYMENT RATE AND PERCENTAGE CHANGE IN TOTAL JOBS 1/

Note:
Source:



CIVILIAN UNEMPLOYMENT RATE AND PERCENTAGE CHANGE IN NON-AGRICULTURAL WAGE & SALARY JOBS 1/



Source: Data compiled from tables A-3 (Civilian Unemployment Rate) and A-5 (Non-Agricultural Wage & Salary Jobs).

Table A-1

CIVILIAN LABOR FORCE

<i>Year</i>	<i>First Quarter</i>	<i>Second Quarter</i>	<i>Third Quarter</i>	<i>Fourth Quarter</i>	<i>Annual</i>
In Thousands of Persons					
1980	432.0	438.0	442.8	443.3	439.0
1981	449.1	451.0	451.3	452.6	451.0
1982	455.3	461.3	463.7	463.7	461.0
1983	469.1	474.0	472.8	472.2	472.0
1984	471.8	473.7	470.8	471.8	472.0
1985	475.3	477.2	478.5	485.0	479.0
1986	485.3	488.9	493.9	499.9	492.0
1987	506.0	513.0	516.3	520.8	514.0
1988	515.4	519.4	519.0	518.2	518.0
1989	519.4	526.7	521.9	528.0	524.0
1990	532.0	539.8	544.6	551.7	542.0
1991	568.7	573.0	576.1	577.1	573.7
1992	579.2	582.9	585.4	588.7	584.1
1993	587.0	588.0	585.1	583.8	586.0
1994	581.5	581.9	580.1	577.1	580.2
1995	574.2	577.1	577.8	579.3	577.1
1996	585.1	590.7	592.9	594.8	590.9
Percentage Change from the Same Period in Previous Year					
1980	3.3	3.9	5.1	4.7	4.3
1981	4.0	3.0	1.9	2.1	2.7
1982	1.4	2.3	2.7	2.5	2.2
1983	3.0	2.7	2.0	1.8	2.4
1984	0.6	-0.1	-0.4	-0.1	0.0
1985	0.7	0.7	1.6	2.8	1.5
1986	2.1	2.4	3.2	3.1	2.7
1987	4.3	4.9	4.5	4.2	4.5
1988	1.9	1.2	0.5	-0.5	0.8
1989	0.8	1.4	0.6	1.9	1.2
1990	2.4	2.5	4.4	4.5	3.4
1991	6.9	6.2	5.8	4.6	5.9
1992	1.8	1.7	1.6	2.0	1.8
1993	1.3	0.9	0.0	-0.8	0.3
1994	-0.9	-1.0	-0.9	-1.1	-1.0
1995	-1.3	-0.8	-0.4	0.4	-0.5
1996	1.9	2.4	2.6	2.7	2.4

Source: Hawaii State Department of Labor and Industrial Relations.

Table A-2

CIVILIAN EMPLOYMENT

<i>Year</i>	<i>First Quarter</i>	<i>Second Quarter</i>	<i>Third Quarter</i>	<i>Fourth Quarter</i>	<i>Annual</i>
In Thousands of Persons					
1980	411.7	417.2	420.2	422.9	418.0
1981	426.4	427.2	427.4	427.1	427.0
1982	426.9	427.9	429.9	435.4	430.0
1983	438.6	440.0	444.1	445.3	442.0
1984	446.1	447.0	442.9	444.0	445.0
1985	449.2	450.4	449.8	458.6	452.0
1986	461.8	464.8	468.2	477.2	468.0
1987	484.3	492.2	494.7	504.9	494.0
1988	500.7	501.3	502.3	503.8	502.0
1989	505.2	512.2	511.8	514.8	511.0
1990	517.3	523.1	529.1	538.5	527.0
1991	553.9	557.1	559.4	560.6	557.8
1992	557.4	555.7	556.3	560.4	557.8
1993	560.6	563.0	560.6	559.4	560.9
1994	549.2	545.2	541.6	544.0	545.0
1995	541.7	542.8	541.9	546.6	543.3
1996	549.0	552.0	553.5	558.3	553.2
Percentage Change from the Same Period in Previous Year					
1980	5.6	6.3	5.6	5.8	5.8
1981	3.6	2.4	1.7	1.0	2.2
1982	0.1	0.2	0.6	1.9	0.7
1983	2.7	2.8	3.3	2.3	2.8
1984	1.7	1.6	-0.3	-0.3	0.7
1985	0.7	0.8	1.6	3.3	1.6
1986	2.8	3.2	4.1	4.0	3.5
1987	4.9	5.9	5.7	5.8	5.6
1988	3.4	1.9	1.5	-0.2	1.6
1989	0.9	2.2	1.9	2.2	1.8
1990	2.4	2.1	3.4	4.6	3.1
1991	7.1	6.5	5.7	4.1	5.8
1992	0.6	-0.3	-0.6	0.0	0.0
1993	0.6	1.3	0.8	-0.2	0.6
1994	-2.0	-3.2	-3.4	-2.7	-2.8
1995	-1.4	-0.4	0.1	0.5	-0.3
1996	1.4	1.7	2.1	2.1	1.8

Source: Hawaii State Department of Labor and Industrial Relations.

Table A-3

CIVILIAN UNEMPLOYMENT

<i>Year</i>	<i>First Quarter</i>	<i>Second Quarter</i>	<i>Third Quarter</i>	<i>Fourth Quarter</i>	<i>Annual</i>
In Thousands of Persons					
1980	20.3	20.8	22.5	20.4	21.0
1981	22.8	23.8	24.0	25.5	24.0
1982	28.4	33.5	33.9	28.2	31.0
1983	30.5	33.9	28.7	26.9	30.0
1984	25.7	26.6	27.8	27.8	27.0
1985	26.1	26.8	28.7	26.4	27.0
1986	23.5	24.1	25.7	22.7	24.0
1987	21.7	20.8	21.6	15.9	20.0
1988	14.7	18.1	16.7	14.4	16.0
1989	14.2	14.5	10.1	13.3	13.0
1990	14.7	16.7	15.6	13.1	15.0
1991	14.8	15.9	16.7	16.5	16.0
1992	21.8	27.3	29.1	28.3	26.6
1993	26.4	25.0	24.5	24.4	25.1
1994	32.3	36.7	38.6	33.1	35.2
1995	32.6	34.4	35.9	32.5	33.9
1996	36.1	38.8	39.4	36.5	37.7
Percentage Change from the Same Period in Previous Year					
1980	-28.0	-27.7	-4.0	-13.6	-19.2
1981	12.2	14.6	6.4	24.7	14.3
1982	24.9	40.6	41.2	10.9	29.2
1983	7.2	1.4	-15.2	-4.8	-3.2
1984	-15.5	-21.6	-3.0	3.4	-10.0
1985	1.4	0.7	3.0	-5.0	0.0
1986	-10.1	-10.2	-10.2	-14.0	-11.1
1987	-7.6	-13.4	-16.2	-30.0	-16.7
1988	-32.1	-13.0	-22.6	-9.2	-20.0
1989	-3.8	-20.3	-39.7	-7.9	-18.8
1990	3.4	15.2	54.4	-1.2	15.4
1991	0.9	-4.4	7.3	25.8	6.5
1992	47.7	71.4	74.3	71.4	66.7
1993	21.0	-8.4	-15.9	-13.7	-5.8
1994	22.4	46.6	57.5	35.6	40.2
1995	0.7	-6.0	-7.0	-1.9	-3.7
1996	10.9	12.7	9.9	12.4	11.4

Source: Hawaii State Department of Labor and Industrial Relations.

Table A-4

CIVILIAN UNEMPLOYMENT RATE

<i>Year</i>	<i>First Quarter</i>	<i>Second Quarter</i>	<i>Third Quarter</i>	<i>Fourth Quarter</i>	<i>Annual</i>
Percent of the Civilian Labor Force					
1980	4.7	4.7	5.1	4.6	4.8
1981	5.1	5.3	5.3	5.6	5.3
1982	6.2	7.3	7.3	6.1	6.7
1983	6.5	7.2	6.1	5.7	6.4
1984	5.5	5.6	5.9	5.9	5.7
1985	5.5	5.6	6.0	5.4	5.6
1986	4.8	4.9	5.2	4.5	4.9
1987	4.3	4.1	4.2	3.1	3.9
1988	2.9	3.5	3.2	2.8	3.1
1989	2.7	2.7	1.9	2.5	2.5
1990	2.8	3.1	2.9	2.4	2.8
1991	2.6	2.8	2.9	2.9	2.8
1992	3.8	4.7	5.0	4.8	4.6
1993	4.5	4.3	4.2	4.2	4.3
1994	5.6	6.3	6.6	5.7	6.1
1995	5.7	6.0	6.2	5.6	5.9
1996	6.2	6.6	6.6	6.1	6.4

Source: Hawaii State Department of Labor and Industrial Relations.

Table A-5

NON-AGRICULTURAL WAGE AND SALARY JOBS

<i>Year</i>	<i>First Quarter</i>	<i>Second Quarter</i>	<i>Third Quarter</i>	<i>Fourth Quarter</i>	<i>Annual</i>
In Thousands of Persons					
1980	403.1	406.2	403.0	404.1	404.1
1981	406.3	406.9	403.4	402.7	404.8
1982	400.8	401.3	397.4	398.1	399.4
1983	403.6	403.4	407.4	410.5	406.2
1984	409.9	414.7	410.3	415.7	412.7
1985	420.0	423.7	426.9	432.4	425.7
1986	432.8	435.8	438.2	447.5	438.6
1987	451.9	459.0	458.4	470.5	460.0
1988	470.4	476.9	476.8	488.2	478.1
1989	495.4	503.1	504.0	519.3	505.5
1990	520.0	528.6	525.7	539.2	528.4
1991	537.9	537.3	536.1	545.2	539.1
1992	543.1	544.7	538.7	544.7	542.8
1993	540.1	543.4	532.3	539.8	538.9
1994	535.5	538.0	530.5	540.7	536.2
1995	536.0	536.2	526.0	533.2	532.9
1996	531.2	531.6	523.0	531.3	529.3
Percentage Change from the Same Period in Previous Year					
1980	3.3	2.9	1.6	2.5	2.6
1981	0.8	0.2	0.1	-0.3	0.2
1982	-1.4	-1.4	-1.5	-1.1	-1.3
1983	0.7	0.5	2.5	3.1	1.7
1984	1.6	2.8	0.7	1.3	1.6
1985	2.4	2.2	4.0	4.0	3.2
1986	3.1	2.9	2.6	3.5	3.0
1987	4.4	5.3	4.6	5.2	4.9
1988	4.1	3.9	4.0	3.8	3.9
1989	5.3	5.5	5.7	6.4	5.7
1990	5.0	5.1	4.3	3.8	4.5
1991	3.4	1.6	2.0	1.1	2.0
1992	1.0	1.4	0.5	-0.1	0.7
1993	-0.6	-0.2	-1.2	-0.9	-0.7
1994	-0.9	-1.0	-0.3	0.2	-0.5
1995	0.1	-0.3	-0.8	-1.4	-0.6
1996	-0.9	-0.9	-0.6	-0.3	-0.7

Source: Hawaii State Department of Labor and Industrial Relations.

Table A-6

CONSTRUCTION JOBS

<i>Year</i>	<i>First Quarter</i>	<i>Second Quarter</i>	<i>Third Quarter</i>	<i>Fourth Quarter</i>	<i>Annual</i>
In Thousands of Persons					
1980	25.0	24.7	23.1	23.0	24.0
1981	23.0	22.3	21.8	20.5	21.9
1982	19.0	18.1	17.4	16.9	17.9
1983	18.1	17.8	17.9	17.5	17.8
1984	17.0	17.0	15.7	13.5	15.8
1985	16.0	17.0	17.9	17.9	17.2
1986	17.4	17.6	19.4	20.2	18.6
1987	20.6	21.2	21.5	21.5	21.2
1988	21.7	23.0	24.0	24.9	23.4
1989	26.5	28.6	30.2	31.5	29.2
1990	30.9	31.4	32.9	34.0	32.3
1991	33.5	33.8	34.0	33.0	33.6
1992	31.2	31.0	31.3	32.6	31.5
1993	32.7	32.7	32.5	31.5	32.3
1994	29.5	29.3	29.5	28.5	29.2
1995	26.5	26.2	26.7	25.8	26.3
1996	23.8	23.7	23.9	22.5	23.5
Percentage Change from the Same Period in Previous Year					
1980	11.5	8.0	-4.2	-4.9	2.4
1981	-8.1	-9.8	-5.4	-11.0	-8.6
1982	-17.4	-18.8	-20.2	-17.4	-18.5
1983	-4.6	-1.8	2.9	3.4	-0.1
1984	-6.4	-4.7	-12.4	-22.7	-11.5
1985	-5.6	0.0	13.9	31.9	8.8
1986	8.6	3.5	8.5	13.2	8.5
1987	18.6	20.9	10.8	6.4	13.8
1988	5.2	8.5	11.7	16.0	10.4
1989	22.3	24.3	25.6	26.5	24.7
1990	16.6	9.9	9.2	7.8	10.7
1991	8.2	7.5	3.1	-2.9	3.8
1992	-6.8	-8.2	-7.8	-1.2	-6.0
1993	4.7	5.3	3.8	-3.4	2.5
1994	-9.8	-10.3	-9.1	-9.7	-9.7
1995	-10.1	-10.8	-9.8	-9.3	-9.9
1996	-10.4	-9.6	-10.3	-12.8	-10.8

Source: Hawaii State Department of Labor and Industrial Relations.

Table A-7

MANUFACTURING JOBS

<i>Year</i>	<i>First Quarter</i>	<i>Second Quarter</i>	<i>Third Quarter</i>	<i>Fourth Quarter</i>	<i>Annual</i>
In Thousands of Persons					
1980	23.0	23.5	24.6	22.2	23.3
1981	22.4	23.8	23.9	21.8	23.0
1982	21.6	22.8	23.7	21.6	22.4
1983	22.0	22.3	23.5	21.7	22.4
1984	21.5	22.0	22.5	21.5	21.9
1985	21.4	22.0	22.4	22.0	21.9
1986	21.8	22.3	22.3	21.8	22.0
1987	21.8	21.9	22.0	21.8	21.9
1988	21.8	22.2	22.2	21.7	22.0
1989	21.6	21.4	21.6	21.4	21.5
1990	21.1	21.0	21.1	21.0	21.1
1991	20.6	20.4	20.6	20.3	20.5
1992	19.7	19.6	20.0	19.4	19.7
1993	19.3	19.3	19.4	18.7	19.2
1994	17.8	18.0	17.9	17.4	17.8
1995	16.8	16.9	17.2	17.1	17.0
1996	16.7	16.7	16.7	16.5	16.6
Percentage Change from the Same Period in Previous Year					
1980	-0.6	-2.2	-4.2	-2.2	-2.4
1981	-2.5	1.2	-2.6	-2.1	-1.5
1982	-3.7	-4.3	-1.0	-0.8	-2.4
1983	1.9	-2.3	-0.8	0.3	-0.3
1984	-2.1	-1.3	-4.2	-0.9	-2.2
1985	-0.7	-0.1	-0.6	2.3	0.2
1986	1.7	1.7	-0.4	-0.8	0.6
1987	0.4	-1.9	-1.2	0.2	-0.6
1988	-0.3	1.4	0.8	-0.5	0.3
1989	-0.7	-3.6	-2.9	-1.6	-2.2
1990	-2.4	-1.9	-1.9	-1.9	-2.0
1991	-2.5	-3.1	-2.4	-3.3	-2.8
1992	-4.3	-3.5	-3.0	-4.4	-3.8
1993	-2.0	-2.0	-3.3	-3.4	-2.6
1994	-7.5	-6.6	-7.7	-7.2	-7.2
1995	-5.8	-6.3	-3.7	-1.9	-4.3
1996	-0.6	-1.2	-3.2	-3.5	-2.4

Source: Hawaii State Department of Labor and Industrial Relations.

Table A-8

TRANSPORTATION JOBS

<i>Year</i>	<i>First Quarter</i>	<i>Second Quarter</i>	<i>Third Quarter</i>	<i>Fourth Quarter</i>	<i>Annual</i>
In Thousands of Persons					
1980	21.4	21.4	21.4	21.8	21.5
1981	21.3	22.0	22.3	22.0	21.9
1982	21.3	21.4	21.1	21.0	21.2
1983	20.8	20.9	21.3	21.5	21.1
1984	21.5	22.0	22.3	22.7	22.1
1985	22.8	23.4	23.5	23.9	23.4
1986	24.1	24.4	24.6	25.2	24.5
1987	26.0	26.8	27.2	27.6	26.9
1988	27.5	27.8	27.8	28.1	27.8
1989	29.0	29.7	29.9	31.0	29.9
1990	30.9	31.4	31.9	33.2	31.8
1991	32.8	32.4	33.0	33.3	32.9
1992	32.9	33.0	33.1	32.6	32.9
1993	31.5	31.4	31.2	31.1	31.3
1994	31.9	32.3	31.7	31.7	31.9
1995	30.6	30.8	30.7	30.7	30.7
1996	30.8	30.7	30.9	31.3	30.9
Percentage Change from the Same Period in Previous Year					
1980	1.0	1.5	1.6	1.6	1.4
1981	-0.6	2.7	4.1	1.1	1.8
1982	-0.2	-2.5	-5.3	-4.9	-3.3
1983	-2.0	-2.6	1.1	2.5	-0.3
1984	3.0	5.3	4.6	5.4	4.6
1985	6.1	6.6	5.5	5.3	5.9
1986	5.6	4.2	4.5	5.5	4.9
1987	8.1	9.8	10.9	9.7	9.7
1988	5.6	3.8	1.9	1.8	3.2
1989	5.6	6.9	7.6	10.1	7.6
1990	6.4	5.7	7.0	7.3	6.6
1991	6.2	3.2	3.2	0.2	3.2
1992	0.3	1.9	0.4	-1.9	0.2
1993	-4.1	-4.9	-5.6	-4.6	-4.8
1994	1.1	2.7	1.3	1.9	1.8
1995	-4.0	-4.7	-3.0	-3.4	-3.7
1996	0.7	-0.3	0.5	2.1	0.7

Source: Hawaii State Department of Labor and Industrial Relations.

Table A-9

COMMUNICATION JOBS

<i>Year</i>	<i>First Quarter</i>	<i>Second Quarter</i>	<i>Third Quarter</i>	<i>Fourth Quarter</i>	<i>Annual</i>
In Thousands of Persons					
1980	7.0	7.1	7.2	7.3	7.1
1981	7.3	7.4	7.5	7.4	7.4
1982	7.5	7.4	7.5	7.5	7.5
1983	7.5	7.6	7.5	7.5	7.5
1984	7.5	7.6	7.5	7.4	7.5
1985	7.4	7.3	7.3	7.3	7.3
1986	7.1	7.1	7.1	7.1	7.1
1987	7.2	7.3	7.2	7.4	7.3
1988	7.6	7.5	7.5	7.6	7.6
1989	7.3	7.3	7.3	7.3	7.3
1990	7.3	7.4	7.4	7.4	7.4
1991	7.5	7.4	7.3	7.2	7.3
1992	7.0	7.0	6.9	6.8	6.9
1993	6.7	6.5	6.3	6.2	6.4
1994	6.3	6.2	6.2	6.3	6.3
1995	6.2	6.3	6.3	6.3	6.3
1996	6.3	6.3	6.4	6.4	6.4
Percentage Change from the Same Period in Previous Year					
1980	5.8	5.7	4.9	4.8	5.3
1981	5.3	4.5	4.0	1.6	3.8
1982	2.0	0.0	0.4	2.0	1.1
1983	0.7	1.8	0.2	0.0	0.7
1984	-0.2	0.0	-0.9	-1.1	-0.5
1985	-1.1	-3.1	-1.6	-2.0	-1.9
1986	-5.2	-2.5	-3.4	-2.1	-3.3
1987	1.9	2.3	1.4	3.7	2.4
1988	6.3	3.0	4.4	2.0	3.9
1989	-4.6	-3.3	-2.7	-2.9	-3.4
1990	0.2	1.8	1.6	1.4	1.3
1991	2.5	-0.2	-1.3	-3.1	-0.6
1992	-6.7	-5.4	-6.2	-5.1	-5.8
1993	-3.6	-7.4	-8.5	-9.5	-7.2
1994	-5.9	-4.1	-1.6	2.4	-2.4
1995	-2.9	0.8	1.9	-0.5	-0.2
1996	2.4	0.8	0.8	0.8	1.6

Source: Hawaii State Department of Labor and Industrial Relations.

Table A-10
UTILITIES JOBS

<i>Year</i>	<i>First Quarter</i>	<i>Second Quarter</i>	<i>Third Quarter</i>	<i>Fourth Quarter</i>	<i>Annual</i>
In Thousands of Persons					
1980	2.6	2.6	2.6	2.6	2.6
1981	2.6	2.6	2.6	2.7	2.6
1982	2.6	2.6	2.6	2.6	2.6
1983	2.4	2.4	2.4	2.4	2.4
1984	2.4	2.4	2.4	2.4	2.4
1985	2.4	2.5	2.5	2.5	2.5
1986	2.4	2.6	2.6	2.6	2.6
1987	2.6	2.7	2.7	2.7	2.6
1988	2.7	2.7	2.7	2.7	2.7
1989	2.7	2.8	2.8	2.8	2.8
1990	3.0	3.0	3.0	3.0	3.0
1991	3.0	3.1	3.2	3.2	3.1
1992	3.3	3.4	3.5	3.5	3.4
1993	3.5	3.6	3.6	3.6	3.6
1994	3.6	3.6	3.7	3.7	3.7
1995	3.7	3.8	3.8	3.8	3.8
1996	3.8	3.8	3.7	3.6	3.7
Percentage Change from the Same Period in Previous Year					
1980	2.0	2.0	0.7	4.0	2.2
1981	2.0	0.7	2.6	1.9	1.8
1982	0.0	-1.3	-2.6	-3.8	-1.9
1983	-6.4	-5.8	-4.6	-4.6	-5.4
1984	-1.4	0.0	-1.4	-1.4	-1.0
1985	1.4	2.1	4.2	4.2	3.0
1986	0.0	4.1	4.0	5.3	3.4
1987	6.9	3.2	2.6	0.6	3.3
1988	1.9	0.0	1.9	1.9	1.4
1989	1.9	5.0	4.3	4.9	4.1
1990	9.9	9.0	6.5	4.1	7.3
1991	2.2	1.6	4.4	7.9	4.0
1992	9.9	10.3	10.1	10.0	10.0
1993	5.0	4.9	3.3	1.9	3.8
1994	2.9	1.9	1.9	4.2	2.7
1995	2.8	3.2	2.7	2.2	2.7
1996	1.4	0.0	-2.7	-5.3	-1.3

Source: Hawaii State Department of Labor and Industrial Relations.

Table A-11

RETAIL TRADE JOBS

<i>Year</i>	<i>First Quarter</i>	<i>Second Quarter</i>	<i>Third Quarter</i>	<i>Fourth Quarter</i>	<i>Annual</i>
In Thousands of Persons					
1980	86.2	86.0	87.0	87.6	86.7
1981	86.7	86.0	86.8	87.4	86.8
1982	86.5	86.3	86.3	86.2	86.3
1983	87.1	86.5	89.4	90.7	88.5
1984	89.8	91.4	92.8	95.8	92.4
1985	95.1	95.9	96.1	97.3	96.1
1986	96.6	96.5	99.4	101.2	98.4
1987	100.8	102.4	103.9	106.4	103.4
1988	104.7	106.8	107.0	108.5	106.7
1989	109.0	110.1	110.6	113.3	110.7
1990	112.0	113.0	113.7	115.3	113.5
1991	113.8	112.5	114.3	114.3	113.7
1992	113.6	113.2	113.7	112.4	113.2
1993	110.0	110.7	111.2	112.4	111.1
1994	110.4	110.1	111.8	114.9	111.8
1995	113.7	113.2	114.5	115.7	114.3
1996	114.4	113.0	113.2	114.7	113.8
Percentage Change from the Same Period in Previous Year					
1980	2.1	2.1	2.5	3.0	2.4
1981	0.7	0.0	-0.2	-0.1	0.1
1982	-0.2	0.3	-0.6	-1.4	-0.5
1983	0.7	0.2	3.7	5.3	2.5
1984	3.0	5.6	3.8	5.5	4.5
1985	5.9	4.9	3.5	1.6	3.9
1986	1.6	0.6	3.4	4.0	2.4
1987	4.3	6.2	4.6	5.1	5.0
1988	3.9	4.3	2.9	2.0	3.3
1989	4.1	3.0	3.3	4.4	3.7
1990	2.7	2.6	2.8	1.8	2.5
1991	1.6	-0.4	0.5	-0.8	0.2
1992	-0.1	0.6	-0.5	-1.6	-0.4
1993	-3.2	-2.2	-2.2	0.0	-1.9
1994	0.3	-0.6	0.5	2.2	0.6
1995	3.0	2.8	2.4	0.7	2.2
1996	0.6	-0.2	-1.2	-0.9	-0.4

Source: Hawaii State Department of Labor and Industrial Relations.

Table A-12

WHOLESALE TRADE JOBS

<i>Year</i>	<i>First Quarter</i>	<i>Second Quarter</i>	<i>Third Quarter</i>	<i>Fourth Quarter</i>	<i>Annual</i>
In Thousands of Persons					
1980	18.5	18.7	18.7	18.5	18.6
1981	18.6	18.6	18.8	18.8	18.7
1982	18.8	18.7	18.5	18.1	18.5
1983	18.3	18.2	18.4	18.7	18.4
1984	18.7	19.0	19.0	19.1	19.0
1985	19.3	19.5	19.8	19.7	19.6
1986	19.2	19.4	19.7	20.0	19.6
1987	20.0	20.4	20.5	20.7	20.4
1988	20.2	20.6	21.1	21.1	20.7
1989	21.5	21.9	21.9	22.2	21.9
1990	21.9	22.3	22.8	22.9	22.5
1991	22.7	22.6	22.7	22.9	22.7
1992	22.7	22.6	22.4	22.4	22.5
1993	22.0	22.1	21.8	21.8	21.9
1994	21.5	21.5	21.6	21.5	21.5
1995	21.6	21.5	21.5	21.6	21.6
1996	21.5	21.4	21.5	21.6	21.5
Percentage Change from the Same Period in Previous Year					
1980	3.3	2.7	1.4	-0.4	1.8
1981	0.4	-0.4	0.4	1.6	0.5
1982	0.9	0.7	-1.6	-3.7	-0.9
1983	-2.7	-2.9	-0.2	3.1	-0.7
1984	2.3	4.7	3.1	2.1	3.0
1985	3.0	2.6	4.0	3.1	3.2
1986	-0.5	-0.7	-0.3	1.4	0.0
1987	4.3	5.0	3.8	3.8	4.2
1988	1.1	0.9	2.9	2.0	1.7
1989	6.3	6.4	4.1	4.9	5.4
1990	2.3	2.0	4.1	3.5	3.0
1991	3.5	1.3	-0.6	-0.1	1.0
1992	-0.1	0.1	-1.4	-2.3	-0.9
1993	-3.2	-2.1	-2.6	-2.7	-2.6
1994	-2.0	-2.6	-1.1	-1.4	-1.9
1995	0.4	-0.2	-0.2	0.5	0.1
1996	-0.5	-0.5	-0.2	-0.2	-0.5

Source: Hawaii State Department of Labor and Industrial Relations.

Table A-13

FINANCE, INSURANCE AND REAL ESTATE JOBS

<i>Year</i>	<i>First Quarter</i>	<i>Second Quarter</i>	<i>Third Quarter</i>	<i>Fourth Quarter</i>	<i>Annual</i>
In Thousands of Persons					
1980	33.4	32.8	32.7	32.4	32.8
1981	31.7	31.7	31.9	31.5	31.7
1982	32.0	31.7	31.3	31.2	31.5
1983	31.7	31.7	32.2	32.0	31.9
1984	32.0	31.9	31.9	31.7	31.9
1985	31.5	31.9	32.0	32.2	31.9
1986	32.6	32.8	33.5	33.8	33.2
1987	33.5	33.8	33.8	33.8	33.7
1988	34.0	34.3	34.6	34.8	34.4
1989	34.7	34.9	35.2	36.2	35.2
1990	35.9	36.8	37.3	37.3	36.8
1991	37.3	37.3	37.5	37.5	37.4
1992	37.2	37.7	38.3	38.6	37.9
1993	38.3	38.8	39.5	39.2	39.0
1994	38.7	38.6	38.5	37.8	38.4
1995	37.2	37.0	37.3	37.1	37.2
1996	37.0	36.9	36.9	36.6	36.8
Percentage Change from the Same Period in Previous Year					
1980	11.0	5.9	1.5	-0.5	4.3
1981	-5.0	-3.4	-2.5	-2.8	-3.4
1982	0.8	-0.2	-1.9	-1.1	-0.6
1983	-0.9	0.1	2.8	2.7	1.2
1984	0.9	0.7	-1.0	-1.0	-0.1
1985	-1.5	-0.1	0.5	1.6	0.1
1986	3.5	2.7	4.4	5.0	3.9
1987	2.7	3.1	1.1	-0.1	1.7
1988	1.6	1.5	2.4	3.1	2.2
1989	1.9	1.9	1.6	3.9	2.3
1990	3.6	5.3	5.9	3.0	4.4
1991	3.7	1.3	0.6	0.6	1.5
1992	-0.2	1.3	2.0	2.8	1.5
1993	3.1	2.8	3.3	1.6	2.7
1994	1.0	-0.6	-2.6	-3.5	-1.4
1995	-3.9	-4.0	-3.2	-1.9	-3.3
1996	-0.7	-0.3	-1.1	-1.3	-0.9

Source: Hawaii State Department of Labor and Industrial Relations.

Table A-14

SERVICES AND MISCELLANEOUS JOBS

<i>Year</i>	<i>First Quarter</i>	<i>Second Quarter</i>	<i>Third Quarter</i>	<i>Fourth Quarter</i>	<i>Annual</i>
In Thousands of Persons					
1980	97.4	98.5	98.5	99.4	98.5
1981	103.3	102.7	100.6	101.0	101.9
1982	102.1	101.0	100.5	101.4	101.2
1983	104.0	103.8	105.7	106.4	104.9
1984	107.6	108.7	107.1	108.5	108.0
1985	110.7	110.5	113.8	115.7	112.6
1986	117.3	118.4	118.8	120.4	118.7
1987	123.6	125.2	126.8	130.6	126.5
1988	130.8	131.4	133.6	137.3	133.3
1989	141.5	143.4	146.6	150.0	145.4
1990	152.4	153.3	154.9	157.0	154.4
1991	157.4	157.1	160.2	161.7	159.1
1992	162.9	163.1	164.9	163.4	163.6
1993	163.1	163.1	161.9	162.1	162.6
1994	162.6	163.4	164.2	165.3	163.9
1995	165.1	164.6	164.1	164.4	164.5
1996	165.4	165.3	166.2	167.5	166.1
Percentage Change from the Same Period in Previous Year					
1980	1.9	3.5	3.9	3.7	3.2
1981	6.0	4.3	2.2	1.6	3.5
1982	-1.2	-1.7	-0.1	0.4	-0.7
1983	1.9	2.8	5.2	4.9	3.7
1984	3.4	4.7	1.4	2.0	2.9
1985	2.9	1.7	6.2	6.6	4.3
1986	6.0	7.1	4.5	4.1	5.4
1987	5.4	5.7	6.7	8.4	6.6
1988	5.8	5.0	5.4	5.1	5.3
1989	8.2	9.2	9.8	9.3	9.1
1990	7.7	6.9	5.6	4.6	6.2
1991	3.3	2.5	3.4	3.0	3.0
1992	3.5	3.8	2.9	1.0	2.8
1993	0.1	0.0	-1.8	-0.8	-0.6
1994	-0.3	0.2	1.4	2.0	0.8
1995	1.5	0.7	-0.1	-0.6	0.4
1996	0.2	0.4	1.3	1.9	1.0

Source: Hawaii State Department of Labor and Industrial Relations.

Table A-15
HOTEL JOBS

<i>Year</i>	<i>First Quarter</i>	<i>Second Quarter</i>	<i>Third Quarter</i>	<i>Fourth Quarter</i>	<i>Annual</i>
In Thousands of Persons					
1980	24.8	25.2	24.7	25.0	24.9
1981	24.9	24.5	24.6	25.1	24.8
1982	26.7	26.7	26.3	26.4	26.5
1983	26.6	27.0	27.1	27.3	27.0
1984	28.2	28.4	27.9	28.5	28.3
1985	29.4	28.9	28.8	28.9	29.0
1986	29.1	29.2	29.6	29.2	29.2
1987	30.5	30.5	31.2	32.8	31.3
1988	33.7	33.5	34.4	35.7	34.3
1989	36.8	36.7	37.1	37.5	37.0
1990	37.6	38.5	38.8	40.2	38.8
1991	40.5	39.8	41.3	41.5	40.8
1992	41.5	41.3	40.8	40.2	41.0
1993	38.6	38.1	37.7	37.6	38.0
1994	37.7	37.9	38.1	38.3	38.0
1995	38.2	37.5	37.7	37.7	37.8
1996	38.2	38.1	38.5	39.0	38.5
Percentage Change from the Same Period in Previous Year					
1980	-0.7	5.4	4.3	4.2	3.3
1981	0.7	-2.6	-0.1	0.2	-0.4
1982	7.0	8.7	6.7	5.4	7.0
1983	-0.2	1.2	3.2	3.5	1.9
1984	6.1	5.3	2.8	4.2	4.6
1985	4.1	1.5	3.0	1.5	2.5
1986	-1.0	1.0	2.8	0.8	0.9
1987	4.8	4.7	5.5	12.5	6.9
1988	10.3	9.9	10.1	9.0	9.8
1989	9.4	9.3	8.0	4.9	7.9
1990	2.0	5.0	4.6	7.2	4.7
1991	7.8	3.5	6.4	3.4	5.2
1992	2.4	3.8	-1.2	-3.2	0.4
1993	-6.8	-7.9	-7.7	-6.6	-7.3
1994	-2.4	-0.6	1.2	2.1	0.1
1995	1.1	-1.0	-1.2	-1.7	-0.7
1996	0.1	1.6	2.3	3.4	1.9

Source: Hawaii State Department of Labor and Industrial Relations.

Table A-16

FEDERAL GOVERNMENT JOBS

<i>Year</i>	<i>First Quarter</i>	<i>Second Quarter</i>	<i>Third Quarter</i>	<i>Fourth Quarter</i>	<i>Annual</i>
In Thousands of Persons					
1980	29.5	30.4	30.1	29.9	30.0
1981	29.9	30.2	30.5	30.9	30.4
1982	30.9	31.5	31.7	32.0	31.5
1983	32.1	32.2	32.1	32.1	32.1
1984	31.7	32.0	32.2	32.6	32.1
1985	32.3	32.3	32.4	32.5	32.4
1986	32.1	32.0	32.0	32.2	32.1
1987	32.0	32.7	32.9	33.4	32.8
1988	33.8	33.7	33.8	34.1	33.8
1989	33.8	33.9	34.0	34.2	34.0
1990	33.9	35.0	34.1	33.7	34.1
1991	33.4	33.5	34.4	34.1	33.9
1992	33.7	33.5	33.0	32.9	33.3
1993	31.8	32.0	31.9	31.7	31.8
1994	31.3	31.6	31.2	30.9	31.3
1995	31.0	31.2	31.2	30.9	31.1
1996	31.3	31.5	31.5	30.9	31.3
Percentage Change from the Same Period in Previous Year					
1980	-0.1	2.5	1.5	-0.2	0.9
1981	1.3	-0.8	1.2	3.4	1.3
1982	3.3	4.5	3.9	3.5	3.8
1983	3.9	2.3	1.3	0.1	1.9
1984	-1.0	-0.9	0.3	1.6	0.0
1985	1.7	1.2	0.7	-0.3	0.8
1986	-0.4	-1.0	-1.3	-0.8	-0.9
1987	-0.3	2.2	3.0	3.6	2.1
1988	5.4	2.9	2.5	2.0	3.2
1989	0.2	0.7	0.6	0.4	0.5
1990	0.1	3.1	0.2	-1.5	0.5
1991	-1.3	-4.2	1.1	1.3	-0.8
1992	0.7	0.0	-4.0	-3.6	-1.8
1993	-5.6	-4.5	-3.6	-3.7	-4.3
1994	-1.4	-1.3	-2.0	-2.3	-1.7
1995	-1.1	-1.2	-0.3	-0.3	-0.7
1996	1.0	1.0	1.0	0.2	0.6

Source: Hawaii State Department of Labor and Industrial Relations.

Table A-17

STATE GOVERNMENT JOBS

<i>Year</i>	<i>First Quarter</i>	<i>Second Quarter</i>	<i>Third Quarter</i>	<i>Fourth Quarter</i>	<i>Annual</i>
In Thousands of Persons					
1980	46.1	47.1	41.2	46.3	45.2
1981	46.6	47.1	41.1	46.3	45.3
1982	46.4	47.3	41.8	47.0	45.6
1983	47.2	47.6	41.4	47.4	45.9
1984	47.8	48.2	42.3	47.8	46.5
1985	48.5	48.8	43.3	48.9	47.4
1986	49.8	50.2	44.5	50.0	48.6
1987	50.9	51.7	45.5	51.4	49.9
1988	52.4	53.5	47.8	53.7	51.8
1989	54.3	55.3	49.0	55.6	53.5
1990	56.9	59.9	51.3	60.2	57.1
1991	61.8	62.8	53.4	63.0	60.3
1992	64.4	65.7	55.5	64.8	62.6
1993	66.0	68.0	56.8	66.1	64.2
1994	66.5	68.2	58.0	67.3	65.0
1995	67.6	68.7	55.8	63.8	64.0
1996	64.3	66.1	55.1	63.5	62.3
Percentage Change from the Same Period in Previous Year					
1980	5.3	3.1	0.8	8.0	4.3
1981	1.2	-0.2	-0.2	0.1	0.2
1982	-0.4	0.5	1.7	1.5	0.8
1983	1.5	0.5	-0.8	0.8	0.6
1984	1.4	1.4	2.2	0.9	1.4
1985	1.5	1.3	2.4	2.3	1.8
1986	2.6	2.7	2.8	2.3	2.6
1987	2.3	3.1	2.1	2.8	2.6
1988	2.8	3.4	5.1	4.6	3.9
1989	3.6	3.4	2.5	3.5	3.3
1990	4.8	8.3	4.8	8.1	6.6
1991	8.6	4.9	4.1	4.7	5.6
1992	4.2	4.5	3.9	2.8	3.8
1993	2.6	3.6	2.3	2.0	2.7
1994	0.7	0.2	2.2	1.8	1.2
1995	1.6	0.7	-3.9	-5.2	-1.6
1996	-4.8	-3.7	-1.3	-0.4	-2.7

Source: Hawaii State Department of Labor and Industrial Relations.

Table A-18

LOCAL GOVERNMENT JOBS

<i>Year</i>	<i>First Quarter</i>	<i>Second Quarter</i>	<i>Third Quarter</i>	<i>Fourth Quarter</i>	<i>Annual</i>
In Thousands of Persons					
1980	13.2	13.2	16.1	13.1	13.9
1981	12.9	12.5	15.6	12.4	13.4
1982	12.2	12.5	15.2	12.7	13.2
1983	12.4	12.6	15.5	12.6	13.3
1984	12.5	12.7	14.7	12.9	13.2
1985	12.7	12.6	16.0	12.7	13.5
1986	12.6	12.7	14.4	12.9	13.1
1987	12.8	13.0	14.5	13.4	13.4
1988	13.4	13.5	14.8	13.7	13.9
1989	13.6	13.8	15.1	13.9	14.1
1990	13.9	14.1	15.2	14.4	14.4
1991	14.3	14.5	15.6	14.7	14.8
1992	14.7	14.9	16.2	15.3	15.3
1993	15.2	15.3	16.2	15.4	15.5
1994	15.4	15.4	16.3	15.4	15.6
1995	16.3	16.3	17.1	16.2	16.5
1996	16.3	16.4	17.5	16.5	16.7
Percentage Change from the Same Period in Previous Year					
1980	-0.9	-0.7	1.7	13.3	2.9
1981	-2.3	-5.3	-3.3	-5.2	-4.0
1982	-4.9	-0.1	-2.5	2.0	-1.5
1983	1.7	0.3	2.2	-0.4	1.0
1984	0.6	0.8	-5.3	1.8	-0.8
1985	1.2	-0.1	8.6	-1.1	2.4
1986	-0.9	0.1	-9.8	1.6	-2.7
1987	1.7	2.7	0.3	3.6	2.0
1988	4.7	4.1	2.1	2.6	3.3
1989	1.6	1.9	2.1	0.9	1.6
1990	2.0	2.0	1.3	3.7	2.2
1991	3.2	3.0	2.0	2.4	2.6
1992	2.4	2.7	4.0	4.3	3.4
1993	3.4	2.6	0.0	0.6	1.6
1994	1.3	0.8	0.8	-0.2	0.7
1995	5.8	5.6	4.6	5.2	5.4
1996	0.3	0.9	2.3	1.5	1.2

Source: Hawaii State Department of Labor and Industrial Relations.

Table A-19

AGRICULTURE WAGE AND SALARY JOBS

<i>Year</i>	<i>First Quarter</i>	<i>Second Quarter</i>	<i>Third Quarter</i>	<i>Fourth Quarter</i>	<i>Annual</i>
In Thousands of Persons					
1980	10.0	10.9	11.6	10.7	10.8
1981	10.0	12.0	12.7	11.3	11.5
1982	9.9	11.4	12.5	11.3	11.3
1983	9.9	11.3	12.3	11.2	11.2
1984	9.6	11.1	11.9	10.6	10.8
1985	9.8	10.5	11.2	10.1	10.4
1986	9.8	9.9	10.8	10.0	10.1
1987	10.0	10.5	11.3	10.4	10.5
1988	9.7	9.7	10.5	10.0	10.0
1989	9.2	9.7	10.2	9.4	9.6
1990	8.8	9.4	10.4	9.5	9.5
1991	8.8	9.4	10.2	9.9	9.6
1992	9.2	9.3	9.7	9.0	9.3
1993	8.8	8.3	8.8	8.4	8.6
1994	8.0	8.0	8.5	7.6	8.0
1995	7.1	7.0	7.4	7.8	7.3
1996	7.2	7.2	7.6	7.7	7.4
Percentage Change from the Same Period in Previous Year					
1980	4.6	0.5	-1.2	-0.9	0.6
1981	0.1	9.6	9.4	5.8	6.4
1982	-1.1	-4.7	-1.6	0.2	-1.9
1983	0.7	-1.0	-1.8	-1.1	-0.9
1984	-2.9	-1.9	-2.9	-5.4	-3.3
1985	1.8	-5.0	-5.9	-4.5	-3.6
1986	0.3	-5.7	-4.0	-1.2	-2.7
1987	1.6	5.7	4.7	3.6	3.9
1988	-2.5	-7.2	-6.9	-3.7	-5.2
1989	-5.2	-0.5	-3.4	-5.4	-3.6
1990	-4.3	-3.3	2.6	1.1	-0.9
1991	-0.4	-0.1	-2.4	3.8	0.2
1992	4.5	-0.3	-5.0	-9.4	-2.8
1993	-4.8	-10.6	-8.8	-7.0	-7.8
1994	-8.5	-4.0	-3.8	-9.4	-6.4
1995	-11.4	-13.1	-13.2	2.4	-8.9
1996	0.7	2.9	2.7	-0.6	1.4

Source: Hawaii State Department of Labor and Industrial Relations.

Table A-20

LABOR DISPUTES

<i>Year</i>	<i>First Quarter</i>	<i>Second Quarter</i>	<i>Third Quarter</i>	<i>Fourth Quarter</i>	<i>Annual</i>
In Thousands of Persons					
1980	0.1	0.1	1.8	0.0	0.5
1981	0.1	0.0	0.2	0.1	0.1
1982	0.0	0.1	0.1	0.2	0.1
1983	0.0	0.1	0.4	0.1	0.1
1984	0.2	0.0	0.4	1.4	0.5
1985	0.2	0.2	0.0	0.1	0.1
1986	0.1	0.1	0.1	0.6	0.2
1987	0.1	0.1	0.1	0.1	0.1
1988	0.1	0.1	0.1	0.2	0.1
1989	0.0	0.0	0.0	0.0	0.0
1990	2.5	0.0	0.0	0.0	0.6
1991	0.0	0.0	0.0	0.0	0.0
1992	0.0	0.0	0.0	0.0	0.0
1993	0.0	0.0	0.0	0.1	0.0
1994	0.1	0.0	0.1	0.1	0.0
1995	0.1	0.1	0.0	0.0	0.0
1996	0.1	0.0	0.0	0.0	0.0

Source: Hawaii State Department of Labor and Industrial Relations.

Quarterly Statistical & Economic Report

March 1997

INCOME AND PRICES

Data released by the U.S. Bureau of Economic Analysis in late April 1997 indicate that Hawaii's personal income increased 2.0 percent in 1996 as compared to the 1995 figure (table B-1). This implies that personal income increased 0.4 percent over the Hawaii's inflation rate (tables B-2 and B-9).

Most of the increase in personal income came from increases in transfer payments and property income (dividends, interests, and rents). Transfer payments increased 6.6 percent from 1995 to 1996. Property income increased 3.2 percent during the same period.

Personal earnings, which include wages and salaries, other labor income and proprietors' income, increased 0.6 percent from 1995 to 1996. Wages and salaries increased 1.0 percent, other labor income declined 1.2 percent, and proprietors' income declined 0.8 percent during the same period.

By industry, earnings fell from 1995 to 1996 in mining (-11.3 percent), construction (-9.8 percent), farm (-5.5 percent), state and local government (-2.6 percent), manufacturing (-2.0 percent), and the federal military (-0.3 percent). Industries that experienced increases in earnings were services (3.6 percent); transportation; communications and utilities (3.2 percent); finance, insurance and real estate (3.0 percent); federal civilian (2.6 percent); agricultural services; forestry and fishery (2.1 percent); wholesale trade (1.0 percent); and retail trade (1.0 percent).

Hawaii's consumer inflation rate, as measured by the change in Honolulu Consumer Price Index for urban consumers, increased only 1.5 percent in 1996 from a year earlier (table B-9). This is the lowest annual inflation rate since 1964. Among the major consumer expenditure categories, food and beverages experienced a slight price drop in 1996 from the 1995 level. Prices for home rental increased 1.2 percent, apparel and upkeep increased 0.8 percent, transportation rose 2.8 percent, and both medical care and entertainment increased 2.5

Introduction

Part I - Economic Trends and Outlook

- State of the Economy
- Outlook of the Economy
- County Economic Conditions

Part II - Labor Force and Jobs - Overview

Part III - Income and Prices - Overview

Part IV - Tax Base and Revenues - Overview

Part V - Tourism - Overview

Part VI - Construction - Overview

Terms and Definitions

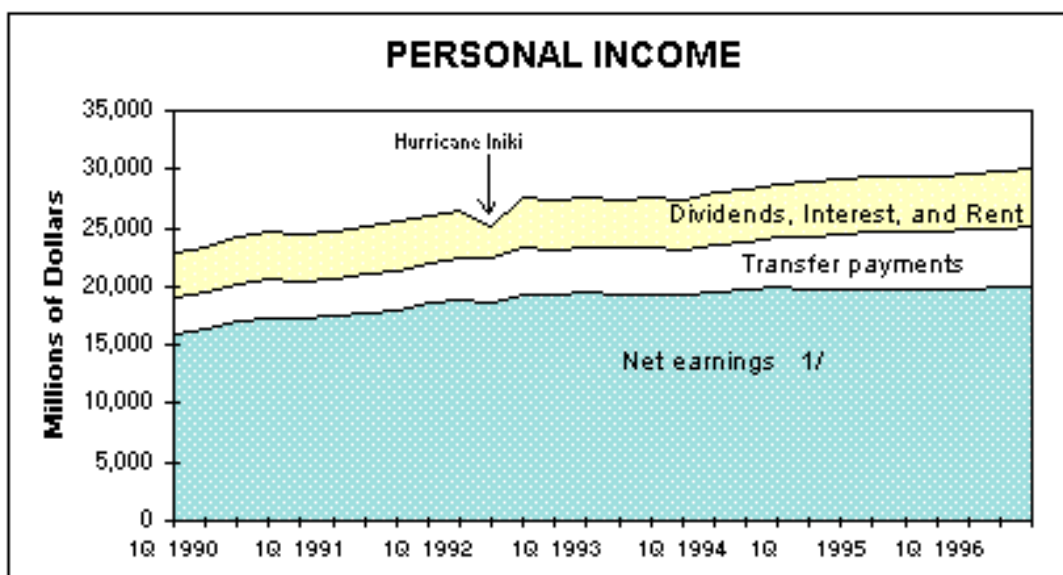
Archive

Statistics & Publications

percent over the same period.

Download a spreadsheet of files B-1 through B-9. Hawaii's consumer inflation rate, as measured by the change in Honolulu Consumer Price Index for urban consumers, increased only 1.5 percent in 1996 from a year earlier (table B-9). This is the lowest annual inflation rate since 1964. Among the major consumer expenditure categories, food and beverages experienced a slight price drop in 1996 from the 1995 level. Prices for home rental increased 1.2 percent, apparel and upkeep increased 0.8 percent, transportation rose 2.8 percent, and both medical care and entertainment increased 2.5 percent over the same period.

[Download a spreadsheet file of Tables B-1 through B-9.](#) (tables-b97.xls)



Note: 1/ Net earnings = Total Wages and Salaries + Other Labor Income + Proprietors' Income - Contribution to Social Insurance.

Source: Research and Economic Analysis Division, DBEDT.

Table B-1

PERSONAL INCOME FOR HAWAII BY MAJOR SOURCES

Series	1995	1996	Percentage Change from Previous Year	
			1995	1996
Derivation of Personal Income				
Wage and salary disbursements	16,770	16,941	0.0	1.0
Plus: Other labor income	1,999	1,975	1.8	-1.2
Plus: Proprietors' income	2,359	2,341	5.1	-0.8
Total earnings	21,128	21,258	0.7	0.6
Less: Personal contrib. for social insur.	1,380	1,379	1.1	-0.1
Net earnings	19,749	19,879	0.7	0.7
Plus: Dividends, interest, rent	4,664	4,815	5.9	3.2
Plus: Transfer payments	4,771	5,087	11.2	6.6
Personal income	29,184	29,782	3.1	2.0
Total Earnings by Industry	21,129	21,258	0.7	0.6
Farm	161	152	-11.5	-5.5
Nonfarm	20,968	21,106	0.9	0.7
Private	15,661	15,839	1.4	1.1
Agriculture forestry, fish., other	154	157	3.0	2.1
Mining	22	20	37.0	-11.3
Construction	1,677	1,513	-7.9	-9.8
Manufacturing	798	782	-0.5	-2.0
Transp., comm., utilities	1,715	1,770	2.5	3.2
Wholesale trade	803	811	1.3	1.0
Retail trade	2,654	2,679	3.8	1.0
Finance, insur., real estate	1,591	1,638	0.1	3.0
Services	6,248	6,470	3.4	3.6
Government & govt. enterprises	5,307	5,268	-0.8	-0.7
Federal civilian	1,218	1,249	-2.5	2.6
Federal military	1,508	1,503	-1.6	-0.3
State and local	2,581	2,515	0.4	-2.6

Source: U.S. Department of Commerce, Bureau of Economic Analysis.

Table B-2
PERSONAL INCOME

<i>Year</i>	<i>First Quarter</i>	<i>Second Quarter</i>	<i>Third Quarter</i>	<i>Fourth Quarter</i>	<i>Annual</i>
In Millions of Dollars					
1980	10,148	10,126	10,501	10,950	10,514
1981	10,951	11,103	11,390	11,527	11,304
1982	11,563	11,889	12,108	12,171	11,997
1983	12,805	12,905	13,182	13,575	13,207
1984	13,531	13,928	14,132	14,284	14,066
1985	14,547	14,767	15,010	15,317	15,036
1986	15,590	15,841	16,283	16,505	16,106
1987	16,619	16,968	17,338	17,804	17,336
1988	18,298	18,661	19,040	19,696	19,195
1989	20,223	20,723	21,180	21,701	21,048
1990	22,801	23,438	24,123	24,603	23,741
1991	24,567	24,785	25,116	25,518	24,996
1992	26,121	26,573	25,059	27,489	26,311
1993	27,400	27,584	27,477	27,559	27,505
1994	27,546	28,235	28,520	28,916	28,304
1995	28,866	29,175	29,284	29,411	29,184
1996	29,417	29,663	29,918	30,129	29,782
Percentage Change from the Same Period in Previous Year					
1980	16.7	13.2	13.7	15.6	15.1
1981	7.9	9.6	8.5	5.3	7.5
1982	5.6	7.1	6.3	5.6	6.1
1983	10.7	8.5	8.9	11.5	10.1
1984	5.7	7.9	7.2	5.2	6.5
1985	7.5	6.0	6.2	7.2	6.9
1986	7.2	7.3	8.5	7.8	7.1
1987	6.6	7.1	6.5	7.9	7.6
1988	10.1	10.0	9.8	10.6	10.7
1989	10.5	11.0	11.2	10.2	9.7
1990	(X)	(X)	(X)	(X)	12.8
1991	7.7	5.7	4.1	3.7	5.3
1992	6.3	7.2	-0.2	7.7	5.3
1993	4.9	3.8	9.6	0.3	4.5
1994	0.5	2.4	3.8	4.9	2.9
1995	4.8	3.3	2.7	1.7	3.1
1996	1.9	1.7	2.2	2.4	2.0

Note: (X) = not applicable. Quarterly estimates prior to 1990 are not consistent with the annual revisions, these quarterly estimates will be revised by BEA at second half of 1997. Quarterly estimates from 1st quarter 1990 to 4th quarter 1996 are consistent with the annual revisions.

Source: U.S. Department of Commerce, Bureau of Economic Analysis.

Table B-3

TOTAL WAGES AND SALARIES

<i>Year</i>	<i>First Quarter</i>	<i>Second Quarter</i>	<i>Third Quarter</i>	<i>Fourth Quarter</i>	<i>Annual</i>
In Millions of Dollars					
1980	6,530	6,562	6,693	6,920	6,697
1981	7,029	7,141	7,218	7,357	7,187
1982	7,411	7,537	7,700	7,836	7,610
1983	8,008	8,078	8,079	8,320	8,114
1984	8,399	8,614	8,654	8,711	8,632
1985	8,940	9,077	9,224	9,397	9,215
1986	9,486	9,600	9,812	10,070	9,821
1987	10,262	10,520	10,794	11,119	10,771
1988	11,433	11,604	11,774	12,190	11,837
1989	12,467	12,820	13,176	13,527	13,083
1990	13,917	14,348	14,730	15,099	14,524
1991	15,152	15,249	15,495	15,694	15,398
1992	16,160	16,351	16,430	16,722	16,416
1993	16,604	16,811	16,610	16,526	16,638
1994	16,684	16,750	16,731	16,888	16,763
1995	16,723	16,821	16,795	16,741	16,770
1996	16,736	16,890	17,019	17,120	16,941
Percentage Change from the Same Period in Previous Year					
1980	12.7	10.4	10.2	11.4	11.2
1981	7.6	8.8	7.8	6.3	7.3
1982	5.4	5.5	6.7	6.5	5.9
1983	8.1	7.2	4.9	6.2	6.6
1984	4.9	6.6	7.1	4.7	6.4
1985	6.4	5.4	6.6	7.9	6.7
1986	6.1	5.8	6.4	7.2	6.6
1987	8.2	9.6	10.0	10.4	9.7
1988	11.4	10.3	9.1	9.6	9.9
1989	9.0	10.5	11.9	11.0	10.5
1990	(X)	(X)	(X)	(X)	11.0
1991	8.9	6.3	5.2	3.9	6.0
1992	6.7	7.2	6.0	6.6	6.6
1993	2.7	2.8	1.1	-1.2	1.4
1994	0.5	-0.4	0.7	2.2	0.8
1995	0.2	0.4	0.4	-0.9	0.0
1996	0.1	0.4	1.3	2.3	1.0

Note: (X) = not applicable. Quarterly estimates prior to 1990 are not consistent with the annual revisions, these quarterly estimates will be revised by BEA at second half of 1997. Quarterly estimates from 1st quarter 1990 to 4th quarter 1996 are consistent with the annual revisions.

Source: U.S. Department of Commerce, Bureau of Economic Analysis.

Table B-4

OTHER LABOR INCOME

<i>Year</i>	<i>First Quarter</i>	<i>Second Quarter</i>	<i>Third Quarter</i>	<i>Fourth Quarter</i>	<i>Annual</i>
In Millions of Dollars					
1980	500	520	539	547	529
1981	566	574	578	590	579
1982	607	631	657	680	647
1983	691	693	699	729	718
1984	744	773	776	777	794
1985	777	775	781	791	838
1986	817	850	888	925	940
1987	895	911	925	956	1,016
1988	985	994	1,019	1,064	1,091
1989	1,095	1,139	1,182	1,216	1,245
1990	1,367	1,420	1,477	1,540	1,451
1991	1,566	1,610	1,661	1,690	1,632
1992	1,740	1,755	1,781	1,793	1,767
1993	1,892	1,898	1,893	1,871	1,889
1994	1,961	1,946	1,969	1,981	1,964
1995	1,986	2,007	2,007	1,998	1,999
1996	1,969	1,969	1,981	1,982	1,975
Percentage Change from the Same Period in Previous Year					
1980	16.3	17.6	18.5	16.1	17.1
1981	13.2	10.4	7.2	7.9	9.4
1982	7.2	9.9	13.7	15.3	11.7
1983	13.8	9.8	6.4	7.2	11.1
1984	7.7	11.5	11.0	6.6	10.5
1985	4.4	0.3	0.6	1.8	5.6
1986	5.1	9.7	13.7	16.9	12.1
1987	9.5	7.2	4.2	3.4	8.1
1988	10.1	9.1	10.2	11.3	7.4
1989	11.2	14.6	16.0	14.3	14.2
1990	(X)	(X)	(X)	(X)	16.5
1991	14.6	13.4	12.5	9.7	12.5
1992	11.1	9.0	7.2	6.1	8.3
1993	8.7	8.1	6.3	4.4	6.9
1994	3.6	2.5	4.0	5.9	4.0
1995	1.3	3.1	1.9	0.9	1.8
1996	-0.9	-1.9	-1.3	-0.8	-1.2

Note: (X) = not applicable. Quarterly estimates prior to 1990 are not consistent with the annual revisions, these quarterly estimates will be revised by BEA at second half of 1997. Quarterly estimates from 1st quarter 1990 to 4th quarter 1996 are consistent with the annual revisions.

Source: U.S. Department of Commerce, Bureau of Economic Analysis.

Table B-5

PROPRIETORS' INCOME

<i>Year</i>	<i>First Quarter</i>	<i>Second Quarter</i>	<i>Third Quarter</i>	<i>Fourth Quarter</i>	<i>Annual</i>
In Millions of Dollars					
1980	917	829	921	1,013	887
1981	783	722	736	715	685
1982	691	833	834	866	753
1983	1,014	942	1,127	1,179	1,006
1984	998	1,096	1,157	1,181	953
1985	1,174	1,210	1,258	1,344	1,054
1986	1,399	1,421	1,596	1,543	1,136
1987	1,550	1,579	1,620	1,665	1,247
1988	1,768	1,900	1,986	2,094	1,648
1989	2,148	2,221	2,228	2,205	1,596
1990	1,798	1,804	1,935	1,899	1,859
1991	1,859	1,917	1,897	1,858	1,883
1992	1,998	2,029	1,782	2,115	1,981
1993	2,176	2,110	2,128	2,198	2,153
1994	1,921	2,279	2,358	2,420	2,244
1995	2,386	2,380	2,355	2,316	2,359
1996	2,318	2,338	2,349	2,359	2,341
Percentage Change from the Same Period in Previous Year					
1980	45.1	25.6	31.4	46.6	37.5
1981	-14.6	-12.9	-20.1	-29.4	-22.8
1982	-11.7	15.4	13.3	21.1	9.9
1983	46.7	13.1	35.1	36.1	33.6
1984	-1.6	16.3	2.7	0.2	-5.2
1985	17.6	10.4	8.7	13.8	10.6
1986	19.2	17.4	26.9	14.8	7.7
1987	10.8	11.1	1.5	7.9	9.8
1988	14.1	20.3	22.6	25.8	32.1
1989	21.5	16.9	12.2	5.3	-3.2
1990	(X)	(X)	(X)	(X)	16.5
1991	3.4	6.3	-2.0	-2.2	1.3
1992	7.5	5.8	-6.1	13.8	5.2
1993	8.9	4.0	19.4	3.9	8.7
1994	-11.7	8.0	10.8	10.1	4.2
1995	24.2	4.4	-0.1	-4.3	5.1
1996	-2.8	-1.8	-0.3	1.9	-0.8

Note: (X) = not applicable. Quarterly estimates prior to 1990 are not consistent with the annual revisions, these quarterly estimates will be revised by BEA at second half of 1997. Quarterly estimates from 1st quarter 1990 to 4th quarter 1996 are consistent with the annual revisions.

Source: U.S. Department of Commerce, Bureau of Economic Analysis.

Table B-6

DIVIDENDS, INTEREST, AND RENT

<i>Year</i>	<i>First Quarter</i>	<i>Second Quarter</i>	<i>Third Quarter</i>	<i>Fourth Quarter</i>	<i>Annual</i>
In Millions of Dollars					
1980	1,417	1,411	1,413	1,505	1,549
1981	1,608	1,678	1,785	1,793	1,849
1982	1,787	1,801	1,781	1,589	1,883
1983	1,869	1,917	1,981	2,042	2,125
1984	2,094	2,154	2,243	2,285	2,413
1985	2,302	2,330	2,343	2,377	2,579
1986	2,441	2,500	2,501	2,220	2,760
1987	2,450	2,467	2,501	2,563	2,838
1988	2,591	2,636	2,728	2,819	3,112
1989	2,919	2,980	2,973	3,033	3,522
1990	3,804	3,877	3,974	4,016	3,918
1991	4,049	4,056	4,075	4,153	4,084
1992	4,166	4,212	2,645	4,184	3,802
1993	4,236	4,189	4,142	4,123	4,172
1994	4,190	4,404	4,494	4,532	4,405
1995	4,629	4,668	4,647	4,712	4,664
1996	4,757	4,775	4,837	4,892	4,815
Percentage Change from the Same Period in Previous Year					
1980	23.3	18.4	14.0	12.2	17.4
1981	13.5	18.9	26.3	19.1	19.3
1982	11.1	7.3	-0.2	-11.4	1.8
1983	4.6	6.4	11.2	28.5	12.9
1984	12.0	12.4	13.2	11.9	13.5
1985	9.9	8.2	4.5	4.0	6.9
1986	6.0	7.3	6.7	-6.6	7.0
1987	0.4	-1.3	0.0	15.5	2.8
1988	5.8	6.9	9.1	10.0	9.7
1989	12.7	13.1	9.0	7.6	13.2
1990	(X)	(X)	(X)	(X)	11.2
1991	6.4	4.6	2.5	3.4	4.2
1992	2.9	3.8	-35.1	0.7	-6.9
1993	1.7	-0.5	56.6	-1.5	9.7
1994	-1.1	5.1	8.5	9.9	5.6
1995	10.5	6.0	3.4	4.0	5.9
1996	2.8	2.3	4.1	3.8	3.2

Note: (X) = not applicable. Quarterly estimates prior to 1990 are not consistent with the annual revisions, these quarterly estimates will be revised by BEA at second half of 1997. Quarterly estimates from 1st quarter 1990 to 4th quarter 1996 are consistent with the annual revisions.

Source: U.S. Department of Commerce, Bureau of Economic Analysis.

Table B-7

TRANSFER PAYMENTS

<i>Year</i>	<i>First Quarter</i>	<i>Second Quarter</i>	<i>Third Quarter</i>	<i>Fourth Quarter</i>	<i>Annual</i>
In Millions of Dollars					
1980	1,215	1,233	1,370	1,410	1,304
1981	1,457	1,486	1,578	1,588	1,519
1982	1,605	1,637	1,699	1,767	1,670
1983	1,805	1,850	1,864	1,886	1,847
1984	1,902	1,913	1,924	1,950	1,920
1985	2,019	2,039	2,073	2,084	2,049
1986	2,145	2,178	2,208	2,220	2,189
1987	2,201	2,244	2,266	2,287	2,264
1988	2,373	2,390	2,409	2,434	2,420
1989	2,509	2,539	2,618	2,731	2,633
1990	3,019	3,115	3,167	3,235	3,134
1991	3,160	3,171	3,221	3,367	3,230
1992	3,349	3,526	3,725	3,968	3,642
1993	3,823	3,918	4,025	4,139	3,976
1994	4,154	4,219	4,329	4,467	4,292
1995	4,519	4,684	4,864	5,018	4,771
1996	5,004	5,066	5,116	5,163	5,087
Percentage Change from the Same Period in Previous Year					
1980	13.4	12.2	17.6	19.1	15.7
1981	19.9	20.5	15.2	12.6	16.5
1982	10.2	10.2	7.7	11.3	10.0
1983	12.5	13.0	9.7	6.7	10.6
1984	5.4	3.4	3.2	3.4	4.0
1985	6.2	6.6	7.7	6.9	6.7
1986	6.2	6.8	6.5	6.5	6.8
1987	2.6	3.0	2.6	3.0	3.4
1988	7.8	6.5	6.3	6.4	6.9
1989	5.7	6.2	8.7	12.2	8.8
1990	(X)	(X)	(X)	(X)	19.0
1991	4.7	1.8	1.7	4.1	3.0
1992	6.0	11.2	15.6	17.8	12.8
1993	14.2	11.1	8.1	4.3	9.2
1994	8.7	7.7	7.6	7.9	7.9
1995	8.8	11.0	12.4	12.3	11.2
1996	10.7	8.2	5.2	2.9	6.6

Note: (X) = not applicable. Quarterly estimates prior to 1990 are not consistent with the annual revisions, these quarterly estimates will be revised by BEA at second half of 1997. Quarterly estimates from 1st quarter 1990 to 4th quarter 1996 are consistent with the annual revisions.

Source: U.S. Department of Commerce, Bureau of Economic Analysis.

Table B-8

CONTRIBUTION TO SOCIAL INSURANCE

<i>Year</i>	<i>First Quarter</i>	<i>Second Quarter</i>	<i>Third Quarter</i>	<i>Fourth Quarter</i>	<i>Annual</i>
In Millions of Dollars					
1980	431	429	435	445	452
1981	491	497	504	516	514
1982	538	551	563	567	565
1983	582	576	568	581	604
1984	605	622	622	618	647
1985	664	665	668	676	700
1986	699	707	721	736	739
1987	740	753	768	785	800
1988	852	864	875	905	913
1989	951	976	996	1,011	1,031
1990	1,105	1,126	1,160	1,185	1,144
1991	1,219	1,218	1,234	1,244	1,229
1992	1,292	1,301	1,304	1,293	1,298
1993	1,331	1,341	1,321	1,298	1,323
1994	1,364	1,363	1,362	1,372	1,365
1995	1,376	1,385	1,383	1,373	1,380
1996	1,368	1,376	1,384	1,387	1,379
Percentage Change from the Same Period in Previous Year					
1980	14.6	10.6	9.6	10.1	11.3
1981	13.9	15.9	15.9	16.0	13.7
1982	9.6	10.9	11.7	9.9	9.9
1983	8.2	4.5	0.9	2.5	6.8
1984	4.0	8.0	9.5	6.4	7.2
1985	9.8	6.9	7.4	9.4	8.2
1986	5.3	6.3	7.9	8.9	5.6
1987	5.9	6.5	6.5	6.7	8.3
1988	15.1	14.7	13.9	15.3	14.2
1989	11.6	13.0	13.8	11.7	12.9
1990	(X)	(X)	(X)	(X)	10.9
1991	10.3	8.2	6.4	5.0	7.4
1992	6.0	6.8	5.7	3.9	5.6
1993	3.0	3.1	1.3	0.4	1.9
1994	2.5	1.6	3.1	5.7	3.2
1995	0.9	1.6	1.5	0.1	1.1
1996	-0.6	-0.6	0.1	1.0	-0.1

Note: (X) = not applicable. Quarterly estimates prior to 1990 are not consistent with the annual revisions, these quarterly estimates will be revised by BEA at second half of 1997. Quarterly estimates from 1st quarter 1990 to 4th quarter 1996 are consistent with the annual revisions.

Source: U.S. Department of Commerce, Bureau of Economic Analysis.

Table B-9

**CONSUMER PRICE INDEX, ALL URBAN CONSUMERS (CPI-U), AND SELECTED
ITEMS, FOR U.S. AND HONOLULU: 1980-1996**
[1982-84=100]

Period	U.S.	Honolulu						
		All Items	Food & Beverages	Housing 1/	Apparel & Upkeep	Transportation	Medical Care	Entertainment
1980	82.4	83.0	84.2	83.2	89.8	86.6	73.1	78.2
1981	90.9	91.7	92.6	92.3	94.5	95.7	81.8	87.2
1982	96.5	97.2	96.9	98.0	98.4	99.0	91.6	95.7
1983	99.6	99.3	99.5	98.9	101.4	98.2	101.1	100.0
1984	103.9	103.5	103.6	103.1	100.2	102.9	107.3	104.3
1985	107.6	106.8	107.8	106.0	99.6	104.9	113.2	111.9
1986	109.6	109.4	110.0	108.4	99.8	105.2	122.3	113.2
1987	113.6	114.9	114.1	115.0	102.5	109.7	127.9	118.6
1988	118.3	121.7	120.3	123.0	106.8	116.1	132.5	122.9
1989	124.0	128.7	128.1	131.1	104.3	123.9	139.3	124.3
1990	130.7	138.1	137.8	141.5	107.0	131.1	154.2	128.4
1991	136.2	148.0	145.9	152.8	110.5	139.3	171.3	134.3
1992	140.3	155.1	148.5	161.7	114.2	147.4	182.6	136.3
1993	144.5	160.1	152.9	166.6	116.5	150.5	197.4	138.4
1994	148.2	164.5	153.4	177.6	118.7	156.4	206.0	142.3
1995	152.4	168.1	156.8	174.7	117.5	162.4	209.8	144.2
1996	156.9	170.7	156.6	176.8	118.5	167.0	215.0	147.8
Percentage Change from the Same Period in Previous Year								
1981	10.3	10.5	10.0	10.9	5.2	10.5	11.9	11.5
1982	6.2	6.0	4.6	6.2	4.1	3.4	12.0	9.7
1983	3.2	2.2	2.7	0.9	3.0	-0.8	10.4	4.5
1984	4.3	4.2	4.1	4.2	-1.2	4.8	6.1	4.3
1985	3.6	3.2	4.1	2.8	-0.6	1.9	5.5	7.3
1986	1.9	2.4	2.0	2.3	0.2	0.3	8.0	1.2
1987	3.6	5.0	3.7	6.1	2.7	4.3	4.6	4.8
1988	4.1	5.9	5.4	7.0	4.2	5.8	3.6	3.6
1989	4.8	5.8	6.5	6.6	-2.3	6.7	5.1	1.1
1990	5.4	7.3	7.6	7.9	2.6	5.8	10.7	3.3
1991	4.2	7.2	5.9	8.0	3.3	6.3	11.1	4.6
1992	3.0	4.8	1.8	5.8	3.3	5.8	6.6	1.5
1993	3.0	3.2	3.0	3.0	2.0	2.1	8.1	1.5
1994	2.6	2.7	0.3	6.6	1.9	3.9	4.4	2.8
1995	2.8	2.2	2.2	1.8	-1.0	3.8	1.8	1.3
1996	2.9	1.5	-0.1	1.2	0.8	2.8	2.5	2.5

Notes: Honolulu CPI is normally released twice a year in February and August.

1/ Change in definition in 1983--rental equivalence for homeowners (what owners would have to pay if they rented their homes).

Source: U.S. Department of Labor, Bureau of Labor Statistics.

Quarterly Statistical & Economic Report

March 1997

TAX BASE AND REVENUES

State general fund tax revenues rose modestly in the fourth quarter of 1996, resulting in a 7.1 percent revenue increase for the calendar year of 1996 (table C-1). This annual growth rate is the highest since 1989 (table C-2).

The largest source of general fund tax revenues, general excise and use tax collections, grew 6.0 percent in 1996 over 1995. This is the largest year-to-year growth since 1990 (table C-3).

Though falling in the third and fourth quarters, net individual income tax still increased 8.3 percent in 1996 from the 1995 level (table C-4). As mentioned, the increase in net individual income tax collection in the first and second quarters of 1996 was partly due to lower refunds for 1995 caused by elimination of several tax credits withholding in the fourth quarter.

Refunds exceeded receipts in net corporate income taxes in the fourth quarter of 1996. High net refunds in the fourth quarter have been a phenomena since 1991 because the Department of Taxation processes individual income tax returns in the second and third quarters which delays processing of corporate income tax returns (table C-5). Due to the large increase in tax collection in the first and second quarters, net corporate income tax revenues rose 37.2 percent in 1996 relative to the year earlier (table C-5).

Reflecting increases in hotel room rates and the growth in visitor arrivals, transient accommodation tax revenues rose 17.4 percent in 1996 from the year-earlier figure (table C-6). This was the third consecutive year that the transient accommodation tax revenues grew at double-digit rates.

The general excise and use tax, an indicator of sales, rose 6.1 percent from 1995 to 1996, continuing an acceleration that started in 1995 (table C-7). Both the retail and services tax bases grew at higher rates in 1996 than in 1995 (tables C-8 and C-9). While the contracting tax base fell by 4.4 percent in the last quarter of 1996 over the year-earlier quarter, the contracting base grew 4.8 percent for the year as a whole. This is the first

Introduction

Part I - Economic Trends and Outlook

- State of the Economy
- Outlook of the Economy
- County Economic Conditions

Part II - Labor Force and Jobs - Overview

Part III - Income and Prices - Overview

Part IV - Tax Base and Revenues - Overview

Part V - Tourism - Overview

Part VI - Construction - Overview

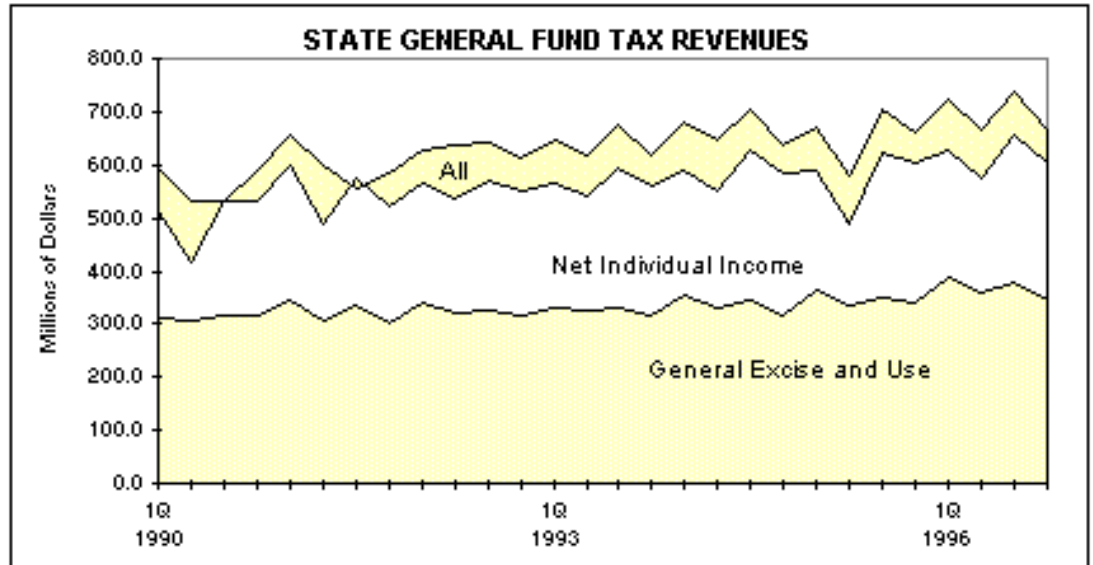
Terms and Definitions

Archive

Statistics & Publications

annual increase in the contracting tax base since 1991 (table C-10). The hotel tax base grew sharply at 12.0 percent in 1996 over 1995—the first double-digit increase since 1987 (table C-11).

[Download a spreadsheet file Tables C-1 through C-13.](#)



Source: Research and Economic Analysis Division, DBEDT.

Table C-1

GENERAL FUND TAX REVENUES AND MAJOR COMPONENTS

<i>Year</i>	<i>General Excise and Use Tax 1/</i>	<i>Net Individual Income Tax 2/</i>	<i>Net Corporate Income Tax 3/</i>	<i>Tax Revenues Distributed to State General Fund</i>
In Thousands of Dollars				
1990	1,250,204	743,114	86,268	2,246,752
1991	1,287,818	900,963	70,568	2,397,289
1992	1,299,813	922,205	42,736	2,523,672
1993	1,308,798	951,403	22,237	2,555,914
1994	1,347,943	1,003,477	34,226	2,672,293
1995	1,386,685	918,809	37,337	2,614,713
1996	1,469,766	995,456	51,243	2,799,972
1996				
1 Qtr.	386,709	242,252	15,451	725,284
2 Qtr.	357,416	217,770	28,338	667,712
3 Qtr.	379,032	276,896	9,910	738,963
4 Qtr.	346,610	258,539	-2,456	668,014
Percentage Change from the Same Period in Previous Year				
1991	3.0	21.2	-18.2	6.7
1992	0.9	2.4	-39.4	5.3
1993	0.7	3.2	-48.0	1.3
1994	3.0	5.5	53.9	4.6
1995	2.9	-8.4	9.1	-2.2
1996	6.0	8.3	37.2	7.1
1996				
1 Qtr.	6.5	7.9	20.1	8.0
2 Qtr.	6.4	41.1	43.0	15.6
3 Qtr.	8.9	-0.1	-17.6	4.7
4 Qtr.	2.1	-1.6	-66.7	1.3

Notes: This series represents data as reported by the Department of Taxation, without adjustment.

1/ Manufactured goods shipped out of state have been exempted from the general excise tax by Act 239, SLH 1987, effective January 1, 1988.

2/ Declaration of estimated taxes, plus payments with returns, plus withholding tax on wages, less refunds.

3/ Declaration of estimated taxes, plus payments with returns, less refunds.

Source: Hawaii State Department of Taxation.

Table C-2

STATE GENERAL FUND TAX REVENUES

<i>Year</i>	<i>First Quarter</i>	<i>Second Quarter</i>	<i>Third Quarter</i>	<i>Fourth Quarter</i>	<i>Annual</i>
In Millions of Dollars					
1980	239.5	270.1	255.0	244.2	1,008.8
1981	244.4	294.4	271.0	261.2	1,070.9
1982	248.4	219.1	284.4	259.5	1,011.5
1983	267.9	270.7	295.5	275.8	1,109.9
1984	293.3	313.7	317.3	316.0	1,240.4
1985	315.1	344.4	344.7	321.6	1,325.8
1986	347.1	393.2	377.6	368.6	1,486.5
1987	400.6	461.7	430.0	438.9	1,731.2
1988	466.1	514.6	483.6	484.9	1,949.2
1989	554.2	593.1	441.0	568.7	2,157.0
1990	596.0	530.5	531.3	589.0	2,246.8
1991	654.2	600.8	557.6	584.7	2,397.3
1992	629.7	638.9	640.3	614.8	2,523.7
1993	646.2	617.4	674.2	618.1	2,555.9
1994	681.3	648.0	703.9	639.1	2,672.3
1995	671.4	577.8	706.0	659.5	2,614.7
1996	725.3	667.7	739.0	668.0	2,800.0
Percentage Change from the Same Period in Previous Year					
1980	13.5	11.8	16.9	11.2	13.3
1981	2.0	9.0	6.3	7.0	6.2
1982	1.7	-25.6	5.0	-0.6	-5.5
1983	7.9	23.5	3.9	6.3	9.7
1984	9.5	15.9	7.4	14.6	11.8
1985	7.4	9.8	8.6	1.8	6.9
1986	10.2	14.2	9.6	14.6	12.1
1987	15.4	17.4	13.9	19.1	16.5
1988	16.4	11.4	12.5	10.5	12.6
1989	18.9	15.3	-8.8	17.3	10.7
1990	7.5	-10.6	20.5	3.6	4.2
1991	9.8	13.3	5.0	-0.7	6.7
1992	-3.7	6.3	14.8	5.2	5.3
1993	2.6	-3.4	5.3	0.5	1.3
1994	5.4	5.0	4.4	3.4	4.6
1995	-1.5	-10.8	0.3	3.2	-2.2
1996	8.0	15.6	4.7	1.3	7.1

Source: Hawaii State Department of Taxation.

Table C-3

GENERAL EXCISE & USE TAX REVENUES

<i>Year</i>	<i>First Quarter</i>	<i>Second Quarter</i>	<i>Third Quarter</i>	<i>Fourth Quarter</i>	<i>Annual</i>
In Millions of Dollars					
1980	128.1	137.3	132.2	129.8	527.3
1981	134.7	152.2	148.0	140.3	575.2
1982	141.1	147.5	151.1	134.8	574.6
1983	155.8	159.4	151.5	148.8	615.5
1984	165.1	173.8	165.6	165.2	669.8
1985	174.1	178.7	176.8	177.9	707.4
1986	192.0	200.0	198.3	187.6	778.0
1987	216.7	214.9	219.3	218.1	869.0
1988	240.5	242.0	241.3	242.2	966.0
1989	270.8	270.7	272.6	282.3	1096.5
1990	313.1	308.6	314.3	314.2	1250.2
1991	346.0	304.2	335.7	301.9	1287.8
1992	338.3	318.8	325.3	317.3	1299.8
1993	332.7	327.5	332.7	315.9	1308.8
1994	353.4	330.3	345.8	318.5	1347.9
1995	363.1	335.9	348.0	339.6	1386.7
1996	386.7	357.4	379.0	346.6	1469.8
Percentage Change from the Same Period in Previous Year					
1980	11.4	15.7	16.0	9.0	13.0
1981	5.2	10.9	11.9	8.1	9.1
1982	4.8	-3.1	2.1	-3.9	-0.1
1983	10.4	8.1	0.2	10.4	7.1
1984	6.0	9.0	9.3	11.0	8.8
1985	5.4	2.8	6.7	7.6	5.6
1986	10.3	11.9	12.2	5.5	10.0
1987	12.9	7.4	10.6	16.2	11.7
1988	11.0	12.6	10.0	11.0	11.2
1989	12.6	11.9	13.0	16.6	13.5
1990	15.6	14.0	15.3	11.3	14.0
1991	10.5	-1.4	6.8	-3.9	3.0
1992	-2.2	4.8	-3.1	5.1	0.9
1993	-1.7	2.7	2.3	-0.5	0.7
1994	6.2	0.8	3.9	0.8	3.0
1995	2.8	1.7	0.7	6.6	2.9
1996	6.5	6.4	8.9	2.1	6.0

Source: Hawaii State Department of Taxation.

Table C-4

NET INDIVIDUAL INCOME TAX REVENUES

<i>Year</i>	<i>First Quarter</i>	<i>Second Quarter</i>	<i>Third Quarter</i>	<i>Fourth Quarter</i>	<i>Annual</i>
In Millions of Dollars					
1980	85.0	81.2	84.1	85.6	335.9
1981	83.2	81.7	92.8	92.0	349.6
1982	85.7	12.6	98.2	100.3	296.8
1983	94.3	54.2	107.9	101.7	358.1
1984	112.2	81.3	112.0	108.4	413.9
1985	108.6	100.3	125.7	111.8	446.4
1986	125.7	99.8	129.1	135.6	490.2
1987	134.4	143.6	138.8	157.9	574.7
1988	159.3	170.0	169.0	182.5	680.8
1989	205.1	211.0	176.7	209.2	802.0
1990	201.6	107.6	216.0	217.9	743.1
1991	252.6	186.2	240.4	221.7	901.0
1992	228.8	216.0	244.0	233.4	922.2
1993	233.9	211.7	263.0	242.9	951.4
1994	236.4	220.3	281.5	265.3	1,003.5
1995	224.6	154.3	277.1	262.8	918.8
1996	242.3	217.8	276.9	258.5	995.5
Percentage Change from the Same Period in Previous Year					
1980	22.2	12.5	17.4	16.0	17.0
1981	-2.1	0.6	10.4	7.4	4.1
1982	2.9	-84.6	5.8	9.1	-15.1
1983	10.1	331.2	9.9	1.3	20.7
1984	18.9	50.1	3.7	6.7	15.6
1985	-3.2	23.3	12.3	3.1	7.8
1986	15.8	-0.5	2.7	21.2	9.8
1987	6.9	43.8	7.5	16.5	17.2
1988	18.5	18.4	21.8	15.6	18.5
1989	28.7	24.1	4.6	14.6	17.8
1990	-1.7	-49.0	22.2	4.2	-7.3
1991	25.3	73.1	11.3	1.7	21.2
1992	-9.4	16.0	1.5	5.3	2.4
1993	2.2	-2.0	7.8	4.1	3.2
1994	1.1	4.1	7.0	9.2	5.5
1995	-5.0	-30.0	-1.6	-0.9	-8.4
1996	7.9	41.1	-0.1	-1.6	8.3

Source: Hawaii State Department of Taxation.

Table C-5

NET CORPORATE INCOME TAX REVENUES

<i>Year</i>	<i>First Quarter</i>	<i>Second Quarter</i>	<i>Third Quarter</i>	<i>Fourth Quarter</i>	<i>Annual</i>	
In Millions of Dollars						
1980	10.8	16.6	12.1	4.5	43.9	
1981	10.0	20.4	9.7	3.5	43.6	
1982	10.5	15.6	7.3	1.4	34.8	
1983	6.5	9.3	11.3	0.8	28.0	
1984	9.6	14.7	10.4	5.0	39.7	
1985	7.5	21.9	11.6	3.1	44.1	
1986	7.8	17.2	14.9	6.4	46.2	
1987	13.6	26.6	17.9	9.2	67.3	
1988	18.1	20.8	16.2	7.9	63.1	
1989	23.5	24.7	18.8	5.7	72.7	
1990	22.5	27.9	29.1	6.8	86.3	
1991	23.7	36.4	11.1	-0.6	70.6	
1992	17.4	15.9	11.2	-1.7	42.7	
1993	6.5	13.4	13.5	-11.2	22.2	
1994	10.5	26.2	9.1	-11.6	34.2	
1995	12.9	19.8	12.0	-7.4	37.3	
1996	15.5	28.3	9.9	-2.5	51.2	
Percentage Change from the Same Period in Previous Year						
1980	21.4	19.9	12.9	2.6	16.3	
1981	-6.7	22.7	-19.7	-21.8	-0.7	
1982	4.7	-23.3	-24.8	-60.7	-20.2	
1983	-38.6	-40.1	55.3	-39.5	-19.6	
1984	48.5	57.1	-7.9	498.7	41.9	
1985	-21.5	49.2	10.7	-37.7	11.1	
1986	3.5	-21.7	29.0	105.8	4.9	
1987	75.3	55.0	19.8	43.9	45.6	
1988	32.9	-21.6	-9.1	-14.1	-6.2	
1989	29.7	18.5	15.6	-27.8	15.2	
1990	-4.3	12.9	55.0	19.2	18.7	
1991	5.4	30.3	-61.9	-109.0	-18.2	
1992	-26.5	-56.4	0.6	181.7	1/	-39.4
1993	-62.5	-15.7	21.1	549.9	1/	-48.0
1994	59.9	96.0	-32.4	3.5	1/	53.9
1995	23.1	-24.4	31.7	-36.2	1/	9.1
1996	20.1	43.0	-17.6	-66.7	1/	37.2

Note: 1/ This figure represents an increase or decrease in net corporate tax refunds greater than tax collection.

Source: Hawaii State Department of Taxation.

Table C-6

TRANSIENT ACCOMMODATION TAX REVENUES

<i>Year</i>	<i>First Quarter</i>	<i>Second Quarter</i>	<i>Third Quarter</i>	<i>Fourth Quarter</i>	<i>Annual</i>
In Millions of Dollars					
1987	7.2	16.3	16.2	13.6	53.2
1988	18.5	19.1	17.9	15.2	70.7
1989	20.8	22.0	18.4	19.7	81.0
1990	22.4	21.9	21.3	17.9	83.5
1991	20.9	19.1	20.0	17.9	77.9
1992	20.9	21.2	19.4	19.4	80.8
1993	20.9	20.7	17.2	16.7	75.4
1994	22.9	19.8	22.3	21.6	86.5
1995	27.2	27.0	26.6	24.8	105.6
1996	34.2	30.1	32.4	27.2	124.0
Percentage Change from the Same Period in Previous Year					
1988 1/	155.9	17.2	10.7	12.4	32.8
1989	12.7	15.3	3.1	29.4	14.6
1990	7.4	-0.4	15.5	-9.3	3.0
1991	-6.4	-12.8	-6.0	-0.1	-6.6
1992	-0.1	10.8	-3.3	8.6	3.7
1993	0.0	-2.5	-11.4	-13.9	-6.7
1994	9.6	-4.4	29.7	29.2	14.7
1995	18.8	36.6	19.5	15.0	22.1
1996	25.6	11.7	21.8	9.9	17.4

Note: 1/ Tax collection for this category began in 1987.

Source: Hawaii State Department of Taxation.

Table C-7

GENERAL EXCISE & USE TAX BASE

<i>Year</i>	<i>First Quarter</i>	<i>Second Quarter</i>	<i>Third Quarter</i>	<i>Fourth Quarter</i>	<i>Annual</i>
In Millions of Dollars					
1980	4,568	4,889	4,830	4,724	19,011
1981	4,865	5,781	5,301	5,065	21,012
1982	4,991	4,982	5,411	4,845	20,229
1983	5,435	5,525	5,317	5,240	21,517
1984	5,808	6,047	5,914	5,814	23,583
1985	6,071	6,169	6,004	6,081	24,325
1986	6,476	6,689	6,742	6,384	26,291
1987	7,063	7,035	7,050	7,163	28,311
1988	7,900	7,831	7,782	8,045	31,558
1989	8,875	8,802	8,823	9,276	35,776
1990	10,099	9,933	10,089	10,340	40,461
1991	11,532	10,125	11,285	10,190	43,132
1992	11,223	10,650	10,869	10,507	43,249
1993	11,177	11,596	11,014	10,500	44,287
1994	11,539	10,859	11,346	10,774	44,518
1995	11,876	11,012	11,448	11,241	45,577
1996	12,324	11,777	12,536	11,700	48,337
Percentage Change from the Same Period in Previous Year					
1980	12.9	15.1	9.4	6.6	10.9
1981	6.5	18.2	9.8	7.2	10.5
1982	2.6	-13.8	2.1	-4.3	-3.7
1983	8.9	10.9	-1.7	8.2	6.4
1984	6.9	9.4	11.2	11.0	9.6
1985	4.5	2.0	1.5	4.6	3.1
1986	6.7	8.4	12.3	5.0	8.1
1987	9.1	5.2	4.6	12.2	7.7
1988	11.9	11.3	10.4	12.3	11.5
1989	12.3	12.4	13.4	15.3	13.4
1990	13.8	12.8	14.3	11.5	13.1
1991	14.2	1.9	11.9	-1.5	6.6
1992	-2.7	5.2	-3.7	3.1	0.3
1993	-0.4	8.9	1.3	-0.1	2.4
1994	3.2	-6.4	3.0	2.6	0.5
1995	2.9	1.4	0.9	4.3	2.4
1996	3.8	6.9	9.5	4.1	6.1

Source: Hawaii State Department of Taxation.

Table C-8
RETAILING TAX BASE

<i>Year</i>	<i>First Quarter</i>	<i>Second Quarter</i>	<i>Third Quarter</i>	<i>Fourth Quarter</i>	<i>Annual</i>
In Millions of Dollars					
1980	1,539.0	1,549.0	1,501.0	1,518.0	6,107.0
1981	1,606.0	1,713.0	1,750.0	1,631.0	6,700.0
1982	1,710.0	1,751.0	1,813.0	1,601.0	6,875.0
1983	1,948.0	1,886.0	1,830.0	1,774.0	7,438.0
1984	2,034.0	2,047.0	1,982.0	2,048.0	8,111.0
1985	2,148.0	2,102.0	2,137.0	2,112.0	8,499.0
1986	2,371.0	2,337.0	2,330.0	2,202.0	9,240.0
1987	2,393.0	2,277.0	2,374.0	2,405.0	9,449.0
1988	2,654.0	2,613.0	2,573.0	2,545.0	10,385.0
1989	3,017.0	2,814.0	2,884.0	2,893.0	11,608.0
1990	3,320.0	3,123.0	3,169.0	3,214.0	12,826.0
1991	3,659.0	3,068.0	3,525.0	3,146.0	13,398.0
1992	3,668.0	3,282.0	3,484.0	3,411.0	13,845.0
1993	3,617.0	3,395.0	3,594.0	3,370.0	13,976.0
1994	3,848.0	3,527.0	3,697.0	3,496.0	14,568.0
1995	3,932.0	3,576.0	3,846.0	3,697.0	15,051.0
1996	4,206.5	3,826.8	4,247.4	3,810.8	16,091.4
Percentage Change from the Same Period in Previous Year					
1980	7.9	10.9	17.2	7.2	10.6
1981	4.4	10.6	16.6	7.4	9.7
1982	6.5	2.2	3.6	-1.8	2.6
1983	13.9	7.7	0.9	10.8	8.2
1984	4.4	8.5	8.3	15.4	9.0
1985	5.6	2.7	7.8	3.1	4.8
1986	10.4	11.2	9.0	4.3	8.7
1987	0.9	-2.6	1.9	9.2	2.3
1988	10.9	14.8	8.4	5.8	9.9
1989	13.7	7.7	12.1	13.7	11.8
1990	10.0	11.0	9.9	11.1	10.5
1991	10.2	-1.8	11.2	-2.1	4.5
1992	0.2	7.0	-1.2	8.4	3.3
1993	-1.4	3.4	3.2	-1.2	0.9
1994	6.4	3.9	2.9	3.7	4.2
1995	2.2	1.4	4.0	5.7	3.3
1996	7.0	7.0	10.4	3.1	6.9

Source: Hawaii State Department of Taxation.

Table C-9
SERVICES TAX BASE

<i>Year</i>	<i>First Quarter</i>	<i>Second Quarter</i>	<i>Third Quarter</i>	<i>Fourth Quarter</i>	<i>Annual</i>
In Millions of Dollars					
1980	378.1	473.2	463.6	428.2	1,743.0
1981	447.8	467.8	450.5	443.8	1,809.9
1982	448.0	497.7	497.2	462.1	1,905.1
1983	519.2	566.2	536.8	512.3	2,134.5
1984	560.5	619.0	599.6	589.4	2,368.4
1985	592.6	646.4	627.9	614.7	2,481.7
1986	660.3	703.9	714.2	705.9	2,784.2
1987	713.4	725.8	732.6	724.4	2,896.2
1988	774.0	837.2	813.6	862.9	3,287.7
1989	905.0	937.7	918.8	937.5	3,699.0
1990	1,020.6	1,106.7	1,061.9	1,087.6	4,276.9
1991	1,235.4	1,229.7	1,253.6	1,169.5	4,888.2
1992	1,260.6	1,279.8	1,284.8	1,207.5	5,032.7
1993	1,233.4	1,316.7	1,300.4	1,242.1	5,092.7
1994	1,359.6	1,300.7	1,413.4	1,197.2	5,270.8
1995	1,371.0	1,312.0	1,342.2	1,325.8	5,351.1
1996	1,372.4	1,433.6	1,480.3	1,331.7	5,618.0
Percentage Change from the Same Period in Previous Year					
1980	8.7	28.6	34.5	21.8	23.4
1981	18.5	-1.1	-2.8	3.7	3.8
1982	0.0	6.4	10.4	4.1	5.3
1983	15.9	13.8	8.0	10.9	12.0
1984	7.9	9.3	11.7	15.0	11.0
1985	5.7	4.4	4.7	4.3	4.8
1986	11.4	8.9	13.7	14.8	12.2
1987	8.0	3.1	2.6	2.6	4.0
1988	8.5	15.4	11.1	19.1	13.5
1989	16.9	12.0	12.9	8.6	12.5
1990	12.8	18.0	15.6	16.0	15.6
1991	21.1	11.1	18.0	7.5	14.3
1992	2.0	4.1	2.5	3.3	3.0
1993	-2.2	2.9	1.2	2.9	1.2
1994	10.2	-1.2	8.7	-3.6	3.5
1995	0.8	0.9	-5.0	10.7	1.5
1996	0.1	9.3	10.3	0.4	5.0

Source: Hawaii State Department of Taxation.

Table C-10

CONTRACTING TAX BASE

<i>Year</i>	<i>First Quarter</i>	<i>Second Quarter</i>	<i>Third Quarter</i>	<i>Fourth Quarter</i>	<i>Annual</i>
In Millions of Dollars					
1980	361.3	414.8	409.1	384.5	1,569.7
1981	378.7	404.5	420.0	410.6	1,613.8
1982	334.3	338.7	334.8	287.1	1,294.9
1983	340.3	359.0	334.9	319.3	1,353.4
1984	312.0	361.8	320.5	248.6	1,242.9
1985	257.7	311.7	364.4	434.0	1,367.7
1986	394.2	468.0	497.4	448.4	1,808.0
1987	450.9	484.5	521.3	546.4	2,003.1
1988	544.8	587.3	601.1	754.4	2,487.6
1989	640.6	757.8	795.7	918.6	3,112.8
1990	870.0	922.3	1,108.7	1,102.7	4,003.7
1991	1,126.1	1,043.7	1,164.5	999.7	4,334.1
1992	1,023.1	1,051.5	977.6	960.4	4,012.7
1993	964.9	960.8	965.2	912.7	3,803.6
1994	827.5	837.9	838.5	818.5	3,322.3
1995	776.6	760.6	751.3	845.1	3,133.5
1996	824.5	814.4	838.6	807.6	3,285.1
Percentage Change from the Same Period in Previous Year					
1980	29.1	24.6	16.5	6.4	18.4
1981	4.8	-2.5	2.7	6.8	2.8
1982	-11.7	-16.3	-20.3	-30.1	-19.8
1983	1.8	6.0	0.0	11.2	4.5
1984	-8.3	0.8	-4.3	-22.1	-8.2
1985	-17.4	-13.8	13.7	74.5	10.0
1986	53.0	50.1	36.5	3.3	32.2
1987	14.4	3.5	4.8	21.8	10.8
1988	20.8	21.2	15.3	38.1	24.2
1989	17.6	29.0	32.4	21.8	25.1
1990	35.8	21.7	39.3	20.0	28.6
1991	29.4	13.2	5.0	-9.3	8.3
1992	-9.1	0.7	-16.0	-3.9	-7.4
1993	-5.7	-8.6	-1.3	-5.0	-5.2
1994	-14.2	-12.8	-13.1	-10.3	-12.7
1995	-6.2	-9.2	-10.4	3.2	-5.7
1996	6.2	7.1	11.6	-4.4	4.8

Source: Hawaii State Department of Taxation.

Table C-11

HOTEL RENTAL TAX BASE

<i>Year</i>	<i>First Quarter</i>	<i>Second Quarter</i>	<i>Third Quarter</i>	<i>Fourth Quarter</i>	<i>Annual</i>
In Millions of Dollars					
1980	173.9	208.1	163.4	163.3	708.6
1981	177.3	229.3	174.5	189.6	770.7
1982	195.6	243.4	209.9	196.0	844.9
1983	214.7	253.2	189.0	219.3	876.2
1984	232.7	275.0	246.5	230.3	984.5
1985	295.5	326.2	246.6	254.0	1,122.3
1986	275.5	359.9	297.8	279.5	1,212.8
1987	353.2	361.8	346.0	308.4	1,369.4
1988	400.6	361.7	328.3	318.2	1,408.9
1989	374.6	419.1	341.7	369.7	1,505.1
1990	419.8	417.0	377.2	359.0	1,573.0
1991	403.5	366.8	395.9	346.7	1,513.0
1992	409.1	424.2	406.8	381.6	1,621.8
1993	398.4	419.2	355.3	354.0	1,527.0
1994	436.8	417.7	421.3	390.6	1,666.4
1995	478.4	447.1	434.3	416.7	1,776.5
1996	518.0	518.2	548.1	473.5	2,057.8
Percentage Change from the Same Period in Previous Year					
1980	-1.4	14.5	4.0	4.1	5.4
1981	2.0	10.2	6.8	16.2	8.8
1982	10.3	6.2	20.3	3.4	9.6
1983	9.8	4.0	-9.9	11.9	3.7
1984	8.4	8.6	30.4	5.0	12.4
1985	27.0	18.6	0.1	10.3	14.0
1986	-6.8	10.3	20.8	10.1	8.1
1987	28.2	0.5	16.2	10.3	12.9
1988	13.4	0.0	-5.1	3.2	2.9
1989	-6.5	15.9	4.1	16.2	6.8
1990	12.1	-0.5	10.4	-2.9	4.5
1991	-3.9	-12.0	5.0	-3.4	-3.8
1992	1.4	15.6	2.8	10.1	7.2
1993	-2.6	-1.2	-12.7	-7.2	-5.8
1994	9.6	-0.4	18.6	10.3	9.1
1995	9.5	7.0	3.1	6.7	6.6
1996	8.3	15.9	26.2	13.6	15.8

Source: Hawaii State Department of Taxation.

Table C-12

PRODUCING TAX BASE

<i>Year</i>	<i>First Quarter</i>	<i>Second Quarter</i>	<i>Third Quarter</i>	<i>Fourth Quarter</i>	<i>Annual</i>
In Millions of Dollars					
1980	24.3	41.0	36.1	42.2	143.7
1981	41.7	49.0	45.7	40.2	176.6
1982	47.9	45.1	40.3	40.6	173.9
1983	50.7	60.6	54.6	54.4	220.3
1984	57.5	63.2	63.4	58.5	242.6
1985	77.2	67.5	60.8	57.3	262.8
1986	64.6	61.8	63.8	60.9	251.0
1987	75.0	70.2	61.4	67.6	274.2
1988	81.3	74.3	71.9	70.7	298.3
1989	90.8	78.7	75.3	81.6	326.4
1990	87.6	79.8	69.5	80.4	317.3
1991	84.1	79.0	76.3	62.5	301.9
1992	127.5	93.7	87.7	99.8	408.7
1993	124.9	133.3	117.0	99.7	474.9
1994	127.7	118.5	116.2	104.7	467.2
1995	122.3	106.7	120.0	108.5	457.5
1996	124.2	124.1	108.9	121.8	479.0
Percentage Change from the Same Period in Previous Year					
1980	-41.7	-5.2	-0.1	18.2	-8.4
1981	71.4	19.5	26.6	-4.9	22.9
1982	14.8	-7.9	-11.9	1.2	-1.5
1983	5.9	34.4	35.5	33.9	26.7
1984	13.5	4.2	16.2	7.6	10.1
1985	34.1	6.9	-4.0	-2.2	8.3
1986	-16.3	-8.6	4.8	6.3	-4.5
1987	16.2	13.8	-3.8	11.1	9.3
1988	8.5	5.8	17.2	4.5	8.8
1989	11.6	5.9	4.7	15.4	9.4
1990	-3.5	1.4	-7.7	-1.5	-2.8
1991	-4.0	-1.0	9.7	-22.3	-4.9
1992	51.5	18.6	14.9	59.7	35.4
1993	-2.0	42.2	33.5	-0.1	16.2
1994	2.3	-11.1	-0.6	5.0	-1.6
1995	-4.2	-10.0	3.3	3.6	-2.1
1996	1.5	16.3	-9.2	12.3	4.7

Source: Hawaii State Department of Taxation.

Table C-13
4% USE TAX BASE

<i>Year</i>	<i>First Quarter</i>	<i>Second Quarter</i>	<i>Third Quarter</i>	<i>Fourth Quarter</i>	<i>Annual</i>
In Millions of Dollars					
1980	66.8	66.6	70.4	58.1	261.9
1981	49.1	134.3	163.3	89.6	436.3
1982	94.7	90.3	108.5	93.9	387.4
1983	62.1	67.9	59.6	87.8	277.5
1984	95.5	89.0	73.5	96.7	354.6
1985	88.0	80.9	107.7	78.9	355.4
1986	71.0	72.7	73.4	62.6	279.6
1987	88.8	72.2	78.5	78.3	317.8
1988	100.4	90.4	144.4	114.3	449.5
1989	101.8	168.2	97.1	110.1	477.1
1990	124.1	134.4	132.3	111.1	501.9
1991	108.2	120.2	121.3	96.3	446.0
1992	104.4	97.9	98.1	119.0	419.5
1993	113.0	128.3	94.5	101.0	436.7
1994	143.3	106.0	129.9	105.1	484.2
1995	130.6	117.2	109.2	104.2	461.2
1996	127.2	110.9	109.1	131.2	478.4
Percentage Change from the Same Period in Previous Year					
1980	44.3	8.9	10.3	-6.0	12.3
1981	-26.5	101.7	131.8	54.3	66.6
1982	92.8	-32.8	-33.6	4.8	-11.2
1983	-34.4	-24.8	-45.0	-6.5	-28.4
1984	53.7	31.1	23.2	10.2	27.8
1985	-7.8	-9.1	46.5	-18.4	0.2
1986	-19.3	-10.1	-31.9	-20.7	-21.3
1987	25.1	-0.6	7.0	25.0	13.6
1988	13.0	25.2	84.0	46.1	41.5
1989	1.4	86.0	-32.8	-3.7	6.1
1990	21.9	-20.1	36.3	0.9	5.2
1991	-12.8	-10.5	-8.4	-13.3	-11.1
1992	-3.5	-18.6	-19.1	23.5	-6.0
1993	8.2	31.0	-3.7	-15.2	4.1
1994	26.8	-17.4	37.5	4.1	10.9
1995	-8.8	10.6	-15.9	-0.9	-4.8
1996	-2.6	-5.4	-0.2	26.0	3.7

Source: Hawaii State Department of Taxation.

Quarterly Statistical & Economic Report

March 1997

TOURISM

HVCB has finalized its 1995 estimate of visitor arrivals. As compared to these higher arrival figures for 1995, visitor arrivals to Hawaii dropped 2.0 percent in the fourth quarter of 1996 from the fourth quarter of 1995, leaving the annual growth rate at 2.9 percent for 1996 (table D-2). Eastbound arrivals increased 5.0 percent, and westbound visitors increased 1.5 percent in 1996 over 1995 (table D-1). Total visitors to Hawaii reached 6.8 million in 1996, the third highest level in Hawaii's history.

While the average daily visitor census grew 1.1 percent in 1996, data in table D-1 imply that the length of stay fell slightly for both westbound and eastbound visitors in 1996 over 1995. Westbound visitors stayed an average of 10.4 days, while eastbound visitors stayed an average of 5.8 days in 1996. For any given day in 1996, there were 114,200 westbound visitors and 44,700 eastbound visitors sightseeing on the Hawaiian Islands (table D-5).

Hotel occupancy rates declined 4.4 percentage points to 71.0 percent in the fourth quarter of 1996 as compared with the same period in 1995. The annual average hotel occupancy rate in 1996 was 76.0 percent, which is 1.2 percentage points lower than that of 1995 (table D-7).

The lower hotel occupancy rate in 1996 may indicate that the increase in the hotel rental tax base was due to an increase in hotel room rates in 1996. The higher daily visitor census and lower hotel occupancy rate in 1996 suggests that either the number of persons per hotel room increased or the proportion of visitors visiting relatives and friends increased in 1996. The number of hotel rooms declined in 1996 according to HVCB's hotel inventory report published in 1996.

[Download a spreadsheet file of Tables D-1 through D-7.](#) (tables-d97.xls)

Introduction

Part I - Economic Trends and Outlook

- State of the Economy
- Outlook of the Economy
- County Economic Conditions

Part II - Labor Force and Jobs - Overview

Part III - Income and Prices - Overview

Part IV - Tax Base and Revenues - Overview

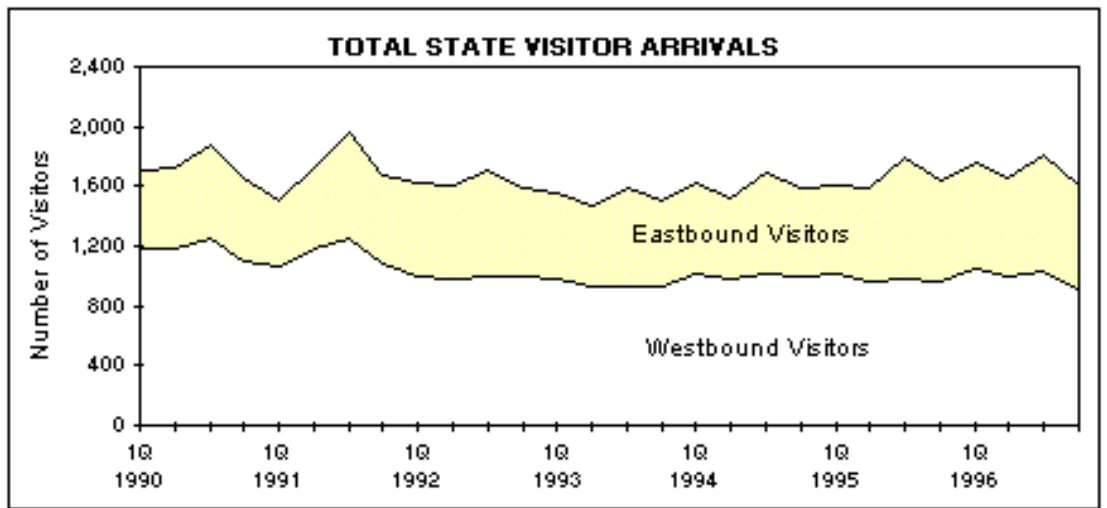
Part V - Tourism - Overview

Part VI - Construction - Overview

Terms and Definitions

Archive

Statistics & Publications



Source: Research and Economic Analysis Division, DBEDT.

Table D-1
VISITOR ARRIVALS AND AVERAGE DAILY VISITOR CENSUS

Year	Visitors Staying Overnight or Longer			Average Number of Visitors Present Daily		
	Westbound	Eastbound	Total	Westbound	Eastbound	Total
1980	3,046,132	888,372	3,934,504	86,722	9,709	96,431
1981	2,974,791	959,832	3,934,623	85,475	10,519	95,994
1982	3,278,525	964,400	4,242,920	94,811	10,570	105,381
1983	3,396,115	971,990	4,368,105	97,388	10,650	108,038
1984	3,721,380	1,134,200	4,855,580	106,268	12,400	118,668
1985	3,708,610	1,175,500	4,884,110	103,857	12,880	116,737
1986	4,256,390	1,350,590	5,606,980	118,152	14,800	132,952
1987	4,204,010	1,595,820	5,799,830	116,868	17,490	134,358
1988	4,264,730	1,877,690	6,142,420	115,739	25,650	141,389
1989	4,705,320	1,936,500	6,641,820	128,173	34,190	162,363
1990	4,719,730	2,251,450	6,971,180	125,626	36,441	162,067
1991	4,584,460	2,289,430	6,873,890	121,172	36,158	157,330
1992	3,980,120	2,533,760	6,513,880	113,806	39,526	153,332
1993	3,764,520	2,359,710	6,124,230	108,122	40,613	148,735
1994	3,997,820	2,432,480	6,430,300	115,281	43,966	159,247
1995	3,933,110	2,696,070	6,629,180	113,090	44,109	157,199
1996	3,991,640	2,831,490	6,823,130	114,161	44,682	158,843
Percentage Change from the Same Period in Previous Year						
1980	-3.0	8.2	-0.7	-3.2	7.9	-2.2
1981	-2.3	8.0	0.0	-1.4	8.3	-0.5
1982	10.2	0.5	7.8	10.9	0.5	9.8
1983	3.6	0.8	3.0	2.7	0.8	2.5
1984	9.6	16.7	11.2	9.1	16.4	9.8
1985	-0.3	3.6	0.6	-2.3	3.9	-1.6
1986	14.8	14.9	14.8	13.8	14.9	13.9
1987	-1.2	18.2	3.4	-1.1	18.2	1.1
1988	1.4	17.7	5.9	-1.0	46.7	5.2
1989	10.3	3.1	8.1	10.7	33.3	14.8
1990	0.3	16.3	5.0	-2.0	6.6	-0.2
1991	-2.9	1.7	-1.4	-3.5	-0.8	-2.9
1992	-13.2	10.7	-5.2	-6.1	9.3	-2.5
1993	-5.4	-6.9	-6.0	-5.0	2.8	-3.0
1994	6.2	3.1	5.0	6.6	8.3	7.1
1995	-1.6	10.8	3.1	-1.9	0.3	-1.3
1996	1.5	5.0	1/ 2.9	0.9	1.3	1.1

Note: 1/ The percentage growth rate differs from the percentage growth rate shown in Table 1. For Table 1, the growth rate was based on preliminary data for both 1995 and 1996. The main reason was that Table 1 has to be consistent with Tables 2-5 (for the counties). Final 1995 county visitor data are still pending.

Sources: Department of Business, Economic Development & Tourism, *State of Hawaii Data Book*, 1987; *State of Hawaii Data Book*, 1993-94; Hawaii Visitors and Convention Bureau.

Table D-2

TOTAL VISITOR ARRIVALS

<i>Year</i>	<i>First Quarter</i>	<i>Second Quarter</i>	<i>Third Quarter</i>	<i>Fourth Quarter</i>	<i>Annual</i>
In Thousands of Persons					
1980	1,004.8	942.9	1,047.3	939.5	3,934.5
1981	959.0	984.5	1,042.3	948.8	3,934.6
1982	1,054.0	1,048.7	1,110.7	1,029.5	4,242.9
1983	1,069.9	1,071.5	1,146.4	1,080.2	4,368.1
1984	1,218.5	1,206.8	1,222.9	1,207.4	4,855.6
1985	1,301.5	1,129.6	1,266.9	1,186.2	4,884.1
1986	1,393.2	1,421.2	1,450.9	1,341.8	5,607.0
1987	1,448.9	1,370.0	1,555.2	1,425.8	5,799.8
1988	1,484.9	1,488.2	1,635.6	1,533.7	6,142.4
1989	1,683.7	1,605.1	1,754.8	1,598.3	6,641.8
1990	1,714.8	1,724.4	1,879.9	1,652.2	6,971.2
1991	1,509.5	1,727.2	1,958.3	1,678.9	6,873.9
1992	1,622.2	1,598.0	1,703.6	1,590.1	6,513.9
1993	1,559.6	1,476.3	1,588.9	1,499.5	6,124.2
1994	1,615.6	1,527.7	1,692.7	1,594.2	6,430.3
1995	1,609.4	1,593.0	1,788.4	1,638.5	6,629.2
1996	1,752.9	1,650.2	1,814.2	1,605.9	6,823.1
Percentage Change from the Same Period in Previous Year					
1980	-5.3	6.5	-0.9	-1.9	-0.7
1981	-4.6	4.4	-0.5	1.0	0.0
1982	9.9	6.5	6.6	8.5	7.8
1983	1.5	2.2	3.2	4.9	3.0
1984	13.9	12.6	6.7	11.8	11.2
1985	6.8	-6.4	3.6	-1.8	0.6
1986	7.0	25.8	14.5	13.1	14.8
1987	4.0	-3.6	7.2	6.3	3.4
1988	2.5	8.6	5.2	7.6	5.9
1989	13.4	7.9	7.3	4.2	8.1
1990	1.8	7.4	7.1	3.4	5.0
1991	-12.0	0.2	4.2	1.6	-1.4
1992	7.5	-7.5	-13.0	-5.3	-5.2
1993	-3.9	-7.6	-6.7	-5.7	-6.0
1994	3.6	3.5	6.5	6.3	5.0
1995	-0.4	4.3	5.7	2.8	3.1
1996	8.9	3.6	1.4	-2.0	2.9

Source: Hawaii Visitors and Convention Bureau.

Table D-3

WESTBOUND VISITORS

<i>Year</i>	<i>First Quarter</i>	<i>Second Quarter</i>	<i>Third Quarter</i>	<i>Fourth Quarter</i>	<i>Annual</i>
In Thousands of Persons					
1980	791.6	720.9	816.6	717.1	3,046.1
1981	733.2	740.2	791.4	710.0	2,974.8
1982	828.0	795.9	865.6	789.1	3,278.5
1983	845.4	828.1	893.9	828.6	3,396.1
1984	954.3	923.0	922.8	921.3	3,721.4
1985	1,011.8	840.2	957.8	898.9	3,708.6
1986	1,087.6	1,094.3	1,073.1	1,001.4	4,256.4
1987	1,084.1	999.9	1,102.4	1,017.6	4,204.0
1988	1,047.4	1,028.8	1,088.1	1,100.4	4,264.7
1989	1,198.6	1,145.6	1,213.7	1,147.4	4,705.3
1990	1,179.4	1,189.3	1,245.3	1,105.7	4,719.7
1991	1,066.9	1,175.7	1,255.0	1,087.0	4,584.5
1992	995.8	976.5	1,004.6	1,003.3	3,980.1
1993	979.8	924.5	937.1	923.1	3,764.5
1994	1,019.3	979.1	1,009.8	989.6	3,997.8
1995	1,010.7	971.4	985.0	966.1	3,933.1
1996	1,054.8	991.4	1,025.8	919.7	3,991.6
Percentage Change from the Same Period in Previous Year					
1980	-9.2	5.7	-2.9	-3.7	-3.0
1981	-7.4	2.7	-3.1	-1.0	-2.3
1982	12.9	7.5	9.4	11.1	10.2
1983	2.1	4.1	3.3	5.0	3.6
1984	12.9	11.5	3.2	11.2	9.6
1985	6.0	-9.0	3.8	-2.4	-0.3
1986	7.5	30.2	12.0	11.4	14.8
1987	-0.3	-8.6	2.7	1.6	-1.2
1988	-3.4	2.9	-1.3	8.1	1.4
1989	14.4	11.4	11.5	4.3	10.3
1990	-1.6	3.8	2.6	-3.6	0.3
1991	-9.5	-1.1	0.8	-1.7	-2.9
1992	-6.7	-16.9	-19.9	-7.7	-13.2
1993	-1.6	-5.3	-6.7	-8.0	-5.4
1994	4.0	5.9	7.8	7.2	6.2
1995	-0.8	-0.8	-2.5	-2.4	-1.6
1996	4.4	2.1	4.1	-4.8	1.5

Source: Hawaii Visitors and Convention Bureau.

Table D-4
EASTBOUND VISITORS

<i>Year</i>	<i>First Quarter</i>	<i>Second Quarter</i>	<i>Third Quarter</i>	<i>Fourth Quarter</i>	<i>Annual</i>
In Thousands of Persons					
1980	213.3	221.9	230.7	222.5	888.4
1981	225.9	244.2	251.0	238.8	959.8
1982	226.1	252.8	245.2	240.4	964.4
1983	224.5	243.4	252.4	251.6	972.0
1984	264.2	283.8	300.1	286.1	1,134.2
1985	289.7	289.4	309.1	287.3	1,175.5
1986	305.5	326.9	377.7	340.4	1,350.6
1987	364.8	370.1	452.8	408.2	1,595.8
1988	437.5	459.4	547.5	433.3	1,877.7
1989	485.1	459.6	541.0	450.9	1,936.5
1990	535.3	535.1	634.6	546.5	2,251.5
1991	442.6	551.5	703.3	592.0	2,289.4
1992	626.4	621.5	699.0	586.9	2,533.8
1993	579.8	551.7	651.7	576.4	2,359.7
1994	596.3	548.6	682.9	604.6	2,432.5
1995	598.7	621.6	803.4	672.4	2,696.1
1996	698.2	658.8	788.4	686.2	2,831.5
Percentage Change from the Same Period in Previous Year					
1980	13.0	9.1	6.9	4.4	8.2
1981	5.9	10.0	8.8	7.3	8.0
1982	0.1	3.5	-2.3	0.7	0.5
1983	-0.7	-3.7	3.0	4.7	0.8
1984	17.7	16.6	18.9	13.7	16.7
1985	9.6	2.0	3.0	0.4	3.6
1986	5.5	13.0	22.2	18.5	14.9
1987	19.4	13.2	19.9	19.9	18.2
1988	19.9	24.1	20.9	6.2	17.7
1989	10.9	0.0	-1.2	4.0	3.1
1990	10.4	16.4	17.3	21.2	16.3
1991	-17.3	3.1	10.8	8.3	1.7
1992	41.5	12.7	-0.6	-0.9	10.7
1993	-7.4	-11.2	-6.8	-1.8	-6.9
1994	2.8	-0.6	4.8	4.9	3.1
1995	0.4	13.3	17.6	11.2	10.8
1996	16.6	6.0	-1.9	2.1	5.0

Source: Hawaii Visitors and Convention Bureau.

Table D-5
AVERAGE DAILY VISITOR CENSUS

<i>Year</i>	<i>First Quarter</i>	<i>Second Quarter</i>	<i>Third Quarter</i>	<i>Fourth Quarter</i>	<i>Annual</i>
In Thousands of Persons					
1990	168.4	155.4	170.2	154.4	162.1
1991	150.0	161.2	171.4	146.7	157.3
1992	160.9	146.1	155.0	151.3	153.3
1993	157.5	137.7	151.8	148.0	148.7
1994	174.6	143.5	157.4	161.4	159.2
1995	166.4	146.8	160.2	155.4	157.2
1996	174.7	148.9	159.2	152.6	158.8
Average Daily Westbound Visitors					
1990	132.9	122.4	127.7	119.5	125.6
1991	119.4	127.2	127.4	110.8	121.2
1992	123.1	108.4	110.0	113.7	113.8
1993	119.9	101.8	103.2	107.6	108.1
1994	127.6	106.3	109.7	117.6	115.3
1995	124.4	106.4	107.8	113.8	113.1
1996	128.3	107.5	110.5	110.4	114.2
Average Daily Eastbound Visitors					
1990	35.4	33.0	42.5	34.9	36.4
1991	30.6	34.1	44.0	35.9	36.2
1992	37.7	37.7	45.1	37.6	39.5
1993	37.6	35.9	48.6	40.4	40.6
1994	47.0	37.2	47.7	43.9	44.0
1995	42.0	40.4	52.4	41.6	44.1
1996	46.4	41.3	48.8	42.2	44.7

Source: Hawaii Visitors and Convention Bureau.

Table D-6

AVERAGE DAILY VISITOR CENSUS

(percentage change from the same period in previous year)

<i>Year</i>	<i>First Quarter</i>	<i>Second Quarter</i>	<i>Third Quarter</i>	<i>Fourth Quarter</i>	<i>Annual</i>
Total Daily Visitors					
1991	-10.9	3.8	0.7	-4.9	-2.9
1992	7.3	-9.4	-9.5	3.1	-2.5
1993	-2.1	-5.8	-2.1	-2.2	-3.0
1994	10.9	4.2	3.7	9.1	7.1
1995	-4.7	2.3	1.7	-3.7	-0.6
1996	5.0	1.4	-0.6	-1.8	1.1
Average Daily Westbound Visitors					
1991	-10.2	3.9	-0.3	-7.2	-3.5
1992	3.2	-14.7	-13.7	2.6	-6.1
1993	-2.6	-6.1	-6.1	-5.4	-5.0
1994	6.4	4.4	6.3	9.3	6.6
1995	-2.5	0.1	-1.8	-3.2	-1.9
1996	3.1	1.0	2.5	-3.0	0.9
Average Daily Eastbound Visitors					
1991	-13.7	3.4	3.7	3.0	-0.8
1992	23.3	10.6	2.4	4.7	9.3
1993	-0.3	-4.8	7.8	7.4	2.8
1994	25.2	3.7	-1.8	8.6	8.3
1995	-10.7	8.6	9.9	-5.3	0.3
1996	10.5	2.3	-7.0	1.6	1.3

Source: Hawaii Visitors and Convention Bureau.

Table D-7
HOTEL OCCUPANCY RATE

<i>Year</i>	<i>First Quarter</i>	<i>Second Quarter</i>	<i>Third Quarter</i>	<i>Fourth Quarter</i>	<i>Annual</i>
Percentage					
1980	78.4	67.9	67.3	65.3	69.7
1981	72.0	66.5	70.2	64.1	68.2
1982	79.0	65.9	70.9	66.7	70.6
1983	75.2	68.1	71.7	66.5	70.4
1984	84.0	75.6	74.6	75.1	77.3
1985	88.1	69.1	75.0	72.5	76.2
1986	87.0	78.8	79.9	76.8	80.6
1987	88.0	77.1	82.1	77.8	81.2
1988	81.7	75.1	81.3	75.1	78.3
1989	85.9	73.9	81.0	75.7	79.1
1990	83.9	75.5	81.0	74.3	78.7
1991	68.2	70.7	79.7	72.5	72.8
1992	75.3	68.6	75.5	75.2	73.6
1993	75.3	67.9	73.8	72.5	72.4
1994	80.9	72.7	79.1	74.8	76.9
1995	80.2	72.6	80.4	75.4	77.2
1996	82.1	72.5	78.5	71.0	76.0

Source: PKF-Hawaii.

Quarterly Statistical & Economic Report

March 1997

CONSTRUCTION

The value of construction completed as measured by the contracting tax base lagged one month increased 2.8 percent in 1996 over 1995 (table E-2).

Although construction output rose, the number of wage and salary jobs in the industry declined 10.8 percent from 1995 to 1996 (table 1). These apparently contradictory trends may indicate that either the number of proprietors in the industry grew or the construction industry is in a period of transition.

The value of private building authorizations, an indicator of future construction, declined 27.0 percent in 1996 as compared with 1995 (table E-2). In particular the value of residential building construction permits declined 34.7 percent, commercial and industrial building permits dropped 31.4 percent, and additions and alterations declined 9.5 percent between 1995 and 1996. Contrary to private construction authorizations, government contracts awarded increased 80.7 percent in 1996 from 1995.

At the county level, all the counties except Kauai experienced declines in private construction activity. The value of private building construction permit declined 28.8 percent for Honolulu, 26.0 percent for Hawaii, and 28.6 percent for Maui in 1996 from year-earlier figures. The value of private building construction permits increased 27.0 percent for Kauai from 1995 to 1996 (table E-7).

Construction costs for a single-family residence increased 6.1 percent from 1995 to 1996 (table E-5). Over the same period, construction costs for high-rise buildings rose 2.4 percent (table E-6).

[Download a spreadsheet file of Tables E-1 through E-8.](#) (tables-e97.xls)

Introduction

Part I - Economic Trends and Outlook

- State of the Economy
- Outlook of the Economy
- County Economic Conditions

Part II - Labor Force and Jobs - Overview

Part III - Income and Prices - Overview

Part IV - Tax Base and Revenues - Overview

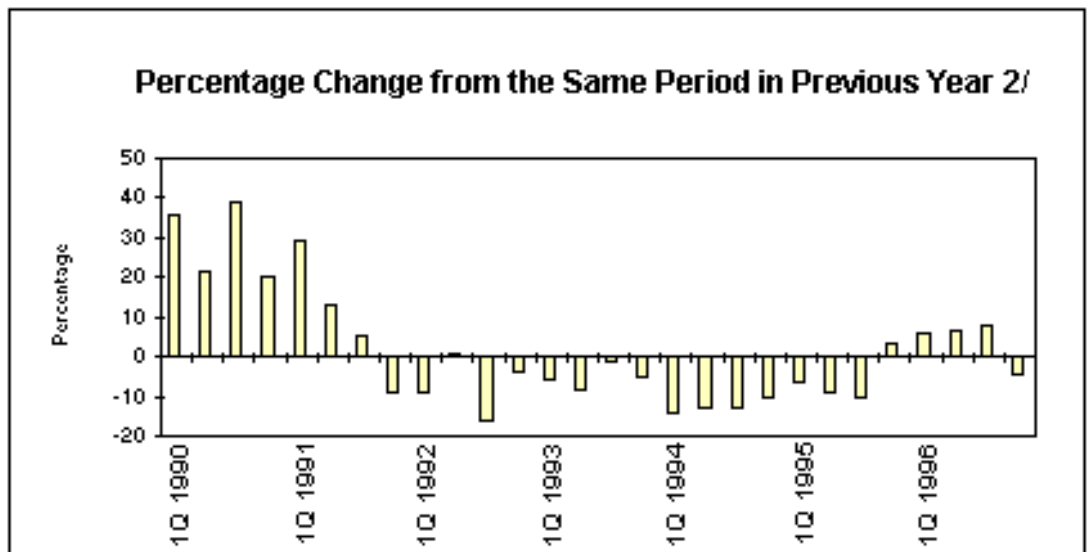
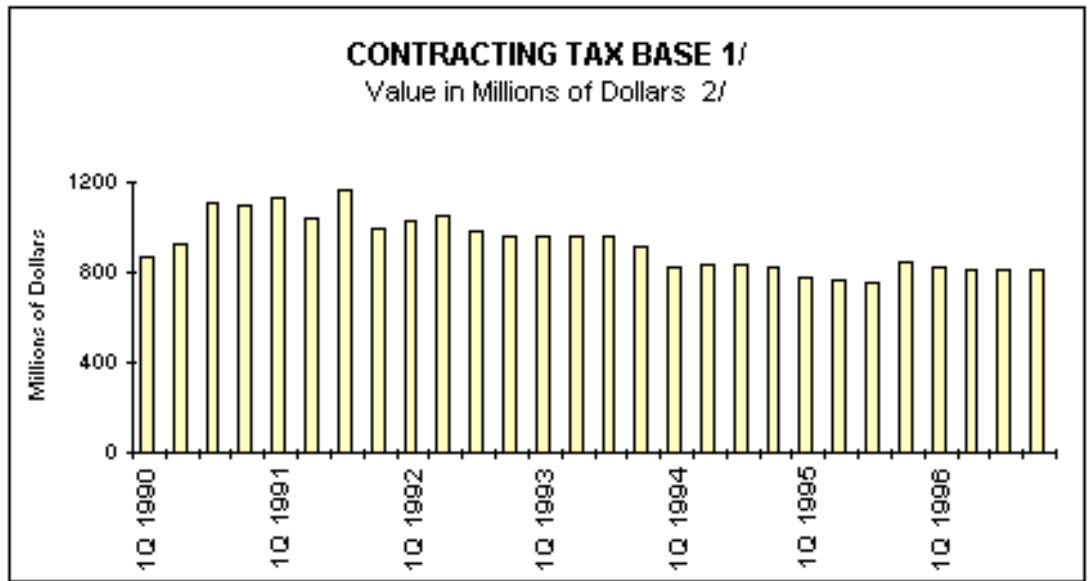
Part V - Tourism - Overview

Part VI - Construction - Overview

Terms and Definitions

Archive

Statistics & Publications



Notes: 1/ The Contracting Tax Base is attributed to every business engaging in the practice of architecture, engineering, land surveying, landscape architecture, and the practice of pest control or fumigation.

2/ Data corresponds to table C-10 (Contracting Tax Base).

Source: Research and Economic Analysis Division, DBEDT.

Table E-1

**ESTIMATED VALUE OF COMPLETED CONSTRUCTION, NEW PRIVATE
BUILDING AUTHORIZATIONS, AND GOVERNMENT CONTRACTS AWARDED**

Year	Value of Construction Completed 1/	Private Building Authorization			Government Contracts Awarded	
		Total Private Authorizations	Residential	Commercial and Industrial 2/		Additions and Alterations
In Millions of Dollars						
1980	1,569.7	1,219.2	680.2	331.5	207.5	244.5
1981	1,584.7	802.0	398.3	240.8	162.9	429.2
1982	1,323.9	683.1	299.2	242.9	141.1	391.6
1983	1,334.2	685.2	296.2	203.2	185.9	275.0
1984	1,227.2	581.5	327.7	104.0	149.9	388.7
1985	1,429.6	888.4	500.1	208.8	180.1	248.9
1986	1,802.1	1,025.2	455.5	267.4	302.3	422.7
1987	2,145.5	1,161.9	507.0	344.4	310.5	370.9
1988	2,529.0	1,546.5	689.2	541.2	316.1	665.0
1989	3,193.1	1,882.4	910.7	561.8	409.9	725.2
1990	4,121.6	2,101.8	952.3	698.0	451.5	825.5
1991	4,305.3	2,151.8	1,192.0	556.2	403.7	729.4
1992	3,950.4	1,751.9	811.1	532.3	408.5	1,159.1
1993	3,785.4	1,496.5	734.7	306.3	455.5	651.8
1994	3,317.3	1,612.9	849.3	370.3	393.4	693.0
1995	3,153.4	1,531.3	745.5	368.3	417.5	490.2
1996	3,241.5	1,117.8	487.0	252.8	378.0	885.5

Notes: 1/ Value of construction subject to State excise tax, adjusted to reflect reporting delay of about one month.

2/ Includes hotels.

Sources: Hawaii State Department of Taxation; F. W. Dodge; County building departments; and First Hawaiian Bank.

Table E-2

**ESTIMATED VALUE OF COMPLETED CONSTRUCTION, NEW PRIVATE
BUILDING AUTHORIZATIONS, AND GOVERNMENT CONTRACTS AWARDED**

Year	Value of Construction Completed 1/	Private Building Authorization			Government Contracts Awarded	
		Total Private Authorizations	Residential	Commercial and Industrial 2/		Additions and Alterations
Percentage Change from the Same Period in Previous Year						
1981	1.0	-34.2	-41.4	-27.4	-21.5	75.5
1982	-16.5	-14.8	-24.9	0.9	-13.4	-8.8
1983	0.8	0.3	-1.0	-16.3	31.8	-29.8
1984	-8.0	-15.1	10.6	-48.8	-19.4	41.3
1985	16.5	52.8	52.6	100.8	20.1	-36.0
1986	26.1	15.4	-8.9	28.1	67.9	69.8
1987	19.1	13.3	11.3	28.8	2.7	-12.3
1988	17.9	33.1	35.9	57.1	1.8	79.3
1989	26.3	21.7	32.1	3.8	29.7	9.1
1990	29.1	11.7	4.6	24.2	10.1	13.8
1991	4.5	2.4	25.2	-20.3	-10.6	-11.6
1992	-8.2	-18.6	-32.0	-4.3	1.2	58.9
1993	-4.2	-14.6	-9.4	-42.5	11.5	-43.8
1994	-12.4	7.8	15.6	20.9	-13.6	6.3
1995	-4.9	-5.1	-12.2	-0.5	6.1	-29.3
1996	2.8	-27.0	-34.7	-31.4	-9.5	80.7

Notes: 1/ Value of construction subject to State excise tax, adjusted to reflect reporting delay of about one month.

2/ Includes hotels.

Sources: Hawaii State Department of Taxation; F. W. Dodge; County building departments; and First Hawaiian Bank.

Table E-3

NUMBER OF SINGLE FAMILY UNITS AUTHORIZED

<i>Year</i>	<i>First Quarter</i>	<i>Second Quarter</i>	<i>Third Quarter</i>	<i>Fourth Quarter</i>	<i>Annual</i>
1980	1,133	1,045	887	990	4,055
1981	775	697	638	539	2,649
1982	472	536	626	651	2,285
1983	896	952	862	707	3,417
1984	1,092	1,324	1,115	911	4,442
1985	802	1,236	1,644	1,269	4,951
1986	925	1,226	1,354	1,195	4,700
1987	1,523	1,639	1,429	1,475	6,066
1988	1,323	1,767	2,096	1,114	6,290
1989	1,474	1,620	1,993	1,777	6,858
1990	1,922	1,476	1,132	1,472	6,002
1991	1,094	1,010	1,303	1,419	4,826
1992	1,317	1,058	1,388	816	4,576
1993	1,147	1,311	1,064	1,228	4,750
1994	961	963	1,426	1,226	4,576
1995	796	1,138	1,180	778	3,892
1996	756	630	880	540	2,806
Percentage Change from the Same Period in Previous Year					
1980	-22.6	-37.5	-45.2	-30.7	-34.4
1981	-31.6	-33.3	-28.1	-45.6	-34.7
1982	-39.1	-23.1	-1.9	20.8	-13.7
1983	89.8	77.6	37.7	8.6	49.5
1984	21.9	39.1	29.4	28.9	30.0
1985	-26.6	-6.6	47.4	39.3	11.5
1986	15.3	-0.8	-17.6	-5.8	-5.1
1987	64.6	33.7	5.5	23.4	29.1
1988	-13.1	7.8	46.7	-24.5	3.7
1989	11.4	-8.3	-4.9	59.5	9.0
1990	30.4	-8.9	-43.2	-17.2	-12.5
1991	-43.1	-31.6	15.1	-3.6	-19.6
1992	20.4	4.8	6.5	-42.5	-5.2
1993	-12.9	23.9	-23.3	50.5	3.8
1994	-16.2	-26.5	34.0	-0.2	-3.7
1995	-17.2	18.2	-17.3	-36.5	-14.9
1996	-5.0	-44.6	-25.4	-30.6	-27.9

Sources: F. W. Dodge; County building departments.

Table E-4

NUMBER OF MULTI-FAMILY UNITS AUTHORIZED

<i>Year</i>	<i>First Quarter</i>	<i>Second Quarter</i>	<i>Third Quarter</i>	<i>Fourth Quarter</i>	<i>Annual</i>
1980	1,237	1,095	2,340	1,931	6,603
1981	742	1,877	409	114	3,142
1982	313	182	1,831	2,268	4,594
1983	11	158	1,058	104	1,331
1984	61	331	134	495	1,021
1985	1,151	696	291	312	2,450
1986	1,247	299	509	424	2,479
1987	488	567	99	305	1,459
1988	428	702	528	935	2,593
1989	309	1,501	664	457	2,931
1990	495	690	349	1,138	2,672
1991	2,330	973	764	736	4,803
1992	520	484	1,219	517	2,740
1993	272	556	1,120	476	2,424
1994	427	974	630	774	2,805
1995	1,290	290	874	192	2,646
1996	220	108	469	312	1,109
Percentage Change from the Same Period in Previous Year					
1980	-47.8	1.3	99.8	13.7	4.0
1981	-40.0	71.4	-82.5	-94.1	-52.4
1982	-57.8	-90.3	347.7	1889.5	46.2
1983	-96.5	-13.2	-42.2	-95.4	-71.0
1984	454.5	109.5	-87.3	376.0	-23.3
1985	1786.9	110.3	117.2	-37.0	140.0
1986	8.3	-57.0	74.9	35.9	1.2
1987	-60.9	89.6	-80.6	-28.1	-41.1
1988	-12.3	23.8	433.3	206.6	77.7
1989	-27.8	113.8	25.8	-51.1	13.0
1990	60.2	-54.0	-47.4	149.0	-8.8
1991	370.7	41.0	118.9	-35.3	79.8
1992	-77.7	-50.3	59.6	-29.8	-43.0
1993	-47.7	14.9	-8.1	-7.9	-11.5
1994	57.0	75.2	-43.8	62.6	15.7
1995	202.1	-70.2	38.7	-75.2	-5.7
1996	-82.9	-62.8	-46.3	62.5	-58.1

Sources: F. W. Dodge; County building departments.

Table E-5

**HONOLULU CONSTRUCTION COST INDEX:
1980-1995, SINGLE FAMILY RESIDENCE (Jan. 1992=100)**

<i>Year</i>	<i>First Quarter</i>	<i>Second Quarter</i>	<i>Third Quarter</i>	<i>Fourth Quarter</i>	<i>Annual</i>
1980	60.9	59.5	60.7	61.7	60.7
1981	61.6	61.3	62.9	63.9	62.4
1982	65.4	64.5	65.0	66.3	65.3
1983	69.6	71.0	72.4	73.1	71.5
1984	74.7	74.3	74.5	75.0	74.6
1985	76.1	75.7	77.6	77.2	76.6
1986	78.5	78.1	79.1	81.5	79.3
1987	80.9	81.3	82.5	83.6	82.1
1988	86.7	85.4	86.6	88.0	86.7
1989	89.5	90.5	90.3	91.5	90.5
1990	91.6	92.5	97.3	99.0	95.1
1991	98.6	97.7	98.3	99.1	98.4
1992	101.5	102.7	103.1	103.3	102.7
1993	108.2	114.9	112.2	110.6	115.5
1994	118.4	124.3	121.6	120.5	121.2
1995	117.6	117.8	118.3	119.3	118.2
1996	120.7	122.5	129.3	129.6	125.5
Percentage Change from the Same Period in Previous Year					
1980	10.0	5.8	5.9	4.1	6.5
1981	1.2	3.0	3.6	3.6	2.8
1982	6.2	5.2	3.3	3.8	4.6
1983	6.4	10.1	11.4	10.3	9.5
1984	7.3	4.6	2.9	2.6	4.3
1985	1.9	1.9	4.2	2.9	2.7
1986	3.2	3.2	1.9	5.6	3.5
1987	3.1	4.1	4.3	2.6	3.5
1988	7.2	5.0	5.0	5.3	5.6
1989	3.2	6.0	4.3	4.0	4.4
1990	2.3	2.2	7.8	8.2	5.1
1991	7.6	5.6	1.0	0.1	3.5
1992	2.9	5.1	4.9	4.2	4.4
1993	6.6	11.9	8.8	7.1	12.5
1994	9.4	8.2	8.4	9.0	4.9
1995	-0.7	-5.2	-2.7	-1.0	-2.4
1996	2.7	4.0	9.3	8.7	6.1

Source: First Hawaiian Bank.

Table E-6

**HONOLULU CONSTRUCTION COST INDEX:
1980-1995, HIGH-RISE BUILDING (Jan. 1992=100)**

<i>Year</i>	<i>First Quarter</i>	<i>Second Quarter</i>	<i>Third Quarter</i>	<i>Fourth Quarter</i>	<i>Annual</i>
1980	57.6	58.0	59.5	60.8	59.0
1981	61.1	61.9	63.0	64.7	62.7
1982	67.0	66.1	66.7	68.6	67.1
1983	71.4	71.0	71.7	72.7	71.7
1984	75.0	73.9	74.1	74.6	74.4
1985	76.2	75.0	76.7	76.8	76.2
1986	78.5	77.4	78.1	79.5	78.4
1987	80.3	81.0	81.3	81.3	81.0
1988	84.7	83.4	84.3	86.0	84.6
1989	88.1	89.1	89.2	91.0	89.4
1990	90.8	92.0	98.5	100.2	95.4
1991	99.6	98.7	99.6	99.0	99.2
1992	99.7	98.5	99.6	100.0	99.4
1993	102.7	103.3	104.0	105.8	103.9
1994	107.7	109.1	109.6	113.2	109.9
1995	113.5	113.5	114.2	115.3	114.1
1996	115.8	116.0	117.4	118.3	116.9
Percentage Change from the Same Period in Previous Year					
1980	10.9	9.1	10.2	8.8	9.8
1981	6.1	6.7	5.9	6.4	6.3
1982	9.7	6.8	5.9	6.0	7.0
1983	6.6	7.4	7.5	6.0	6.9
1984	5.0	4.1	3.3	2.6	3.8
1985	1.6	1.5	3.5	2.9	2.4
1986	3.0	3.2	1.8	3.5	2.9
1987	2.3	4.7	4.1	2.3	3.3
1988	5.5	3.0	3.7	5.8	4.4
1989	4.0	6.8	5.8	5.8	5.7
1990	3.1	3.3	10.4	10.1	6.7
1991	9.7	7.3	1.1	-1.2	4.0
1992	0.1	-0.2	0.0	1.0	0.2
1993	3.0	4.9	4.4	5.8	4.5
1994	4.9	5.6	5.4	7.0	5.8
1995	5.4	4.1	4.2	1.8	3.9
1996	2.0	2.1	2.7	2.6	2.4

Source: First Hawaiian Bank.

Table E-7
**ESTIMATED VALUE OF PRIVATE BUILDING CONSTRUCTION
 AUTHORIZATIONS, BY COUNTY: 1980 TO 1996**

<i>Year</i>	<i>State</i>	<i>City & County of Honolulu</i>	<i>Hawaii County</i>	<i>Kauai County</i>	<i>Maui County</i>
In Thousands of Dollars					
1979	874,915	501,392	112,180	113,819	147,523
1980	1,219,207	686,277	145,994	133,252	253,689
1981	801,999	454,136	136,497	67,653	143,712
1982	683,124	473,009	75,175	44,237	90,703
1983	685,205	366,828	86,653	140,456	91,269
1984	581,497	378,299	90,349	53,010	59,839
1985	888,436	524,823	121,345	63,889	178,933
1986	1,025,195	546,375	231,404	93,199	154,120
1987	1,161,897	749,472	145,157	103,481	163,786
1988	1,546,474	743,056	181,228	213,678	408,508
1989	1,882,397	1,047,747	338,060	178,689	317,364
1990	2,101,767	998,921	429,964	238,968	433,916
1991	2,151,849	1,462,676	369,454	118,547	201,174
1992	1,751,871	1,060,700	379,158	111,098	200,916
1993	1,496,483	959,043	248,239	86,010	203,179
1994	1,612,899	1,073,264	181,059	164,681	193,894
1995	1,532,732	980,757	267,108	80,279	204,588
1996	1,117,760	698,697	171,017	101,981	146,065
1996 1 Qtr	280,480	193,018	27,283	23,487	36,691
2 Qtr.	268,220	146,189	65,975	23,486	32,570
3 Qtr.	352,321	228,620	36,385	39,484	47,833
4 Qtr.	216,740	130,871	41,375	15,523	28,971

Source: County building permits.

Table E-7 (con.)

**ESTIMATED VALUE OF PRIVATE BUILDING CONSTRUCTION
AUTHORIZATIONS, BY COUNTY: 1980 TO 1996**

<i>Year</i>	<i>State</i>	<i>City & County of Honolulu</i>	<i>Hawaii County</i>	<i>Kauai County</i>	<i>Maui County</i>
Percentage Change From The Same Period in Previous Year					
1980	39.4	36.9	30.1	17.1	72.0
1981	-34.2	-33.8	-6.5	-49.2	-43.4
1982	-14.8	4.2	-44.9	-34.6	-36.9
1983	0.3	-22.4	15.3	217.5	0.6
1984	-15.1	3.1	4.3	-62.3	-34.4
1985	52.8	38.7	34.3	20.5	199.0
1986	15.4	4.1	90.7	45.9	-13.9
1987	13.3	37.2	-37.3	11.0	6.3
1988	33.1	-0.9	24.8	106.5	149.4
1989	21.7	41.0	86.5	-16.4	-22.3
1990	11.7	-4.7	27.2	33.7	36.7
1991	2.4	46.4	-14.1	-50.4	-53.6
1992	-18.6	-27.5	2.6	-6.3	-0.1
1993	-14.6	-9.6	-34.5	-22.6	1.1
1994	7.8	11.9	-27.1	91.5	-4.6
1995	-5.0	-8.6	47.5	-51.3	5.5
1996	-27.0	-28.8	-36.0	27.0	-28.6
1996 1 Qtr	-33.6	-29.1	-73.1	82.7	2.3
2 Qtr.	-43.6	-46.4	-1.2	1.0	-71.1
3 Qtr.	-7.3	-19.8	-16.7	103.0	49.9
4 Qtr.	-14.9	-13.1	-25.0	-37.2	20.5

Source: County building permits.

Table E-8

**STATE GOVERNMENT CAPITAL IMPROVEMENT PROJECT EXPENDITURES:
1986 to 1996**

<i>Year</i>	<i>Total Expenditures</i>	<i>General Obligation Bond 1/</i>	<i>Revenue Bond 2/</i>	<i>General Fund (Cash)</i>	<i>Special Fund</i>	<i>Federal Fund 3/</i>
<i>In Thousands of Dollars</i>						
1986	n/a	159,320	92,491	n/a	n/a	n/a
1987	n/a	169,979	89,342	n/a	n/a	n/a
1988	n/a	150,460	60,572	n/a	n/a	n/a
1989	n/a	210,757	127,083	n/a	n/a	n/a
1990	995,163	248,379	368,502	133,529	79,998	164,755
1991	1,027,189	210,022	326,414	121,108	164,915	204,730
1992	1,323,450	331,720	512,432	138,867	124,605	215,826
1993	1,188,315	472,515	225,431	89,917	147,351	253,101
1994	1,214,487	492,048	327,980	56,662	135,440	202,357
1995	822,327	342,423	77,560	19,672	169,901	212,772
1 Qtr.	174,900	65,284	11,465	6,027	42,451	49,672
2 Qtr.	292,411	167,410	17,401	6,033	38,164	63,403
3 Qtr.	167,541	49,171	16,633	4,289	46,711	50,737
4 Qtr.	187,475	60,557	32,062	3,322	42,574	48,959
1996	720,580	286,472	66,625	6,719	165,426	195,338
1 Qtr.	137,754	38,512	27,497	1,592	30,358	39,794
2 Qtr.	245,839	133,694	16,626	2,480	40,695	52,345
3 Qtr.	176,195	54,642	10,163	1,915	54,990	54,485
4 Qtr.	160,792	59,625	12,339	732	39,382	48,714
<i>Percentage Change From Corresponding Period in Previous Year</i>						
1987	n/a	6.7	-3.4	n/a	n/a	n/a
1988	n/a	-11.5	-32.2	n/a	n/a	n/a
1989	n/a	40.1	109.8	n/a	n/a	n/a
1990	n/a	17.9	190.0	n/a	n/a	n/a
1991	3.2	-15.4	-11.4	-9.3	106.1	24.3
1992	28.8	57.9	57.0	14.7	-24.4	5.4
1993	-10.2	42.4	-56.0	-35.2	18.3	17.3
1994	2.2	4.1	45.5	-37.0	-8.1	-20.0
1995	-32.3	-30.4	-76.4	-65.3	25.4	5.1
1 Qtr.	-56.0	-76.5	-38.9	-64.2	51.8	-11.7
2 Qtr.	-37.9	122.4	-94.0	-62.9	11.9	18.2
3 Qtr.	-7.4	-28.7	98.0	-65.5	8.8	5.3
4 Qtr.	13.4	-13.9	252.9	-70.2	39.8	10.7
1996	-12.4	-16.3	-14.1	-65.8	-2.6	-8.2
1 Qtr.	-21.2	-41.0	139.8	-73.6	-28.5	-19.9
2 Qtr.	-15.9	-20.1	-4.5	-58.9	6.6	-17.4
3 Qtr.	5.2	11.1	-38.9	-55.3	17.7	7.4
4 Qtr.	-14.2	-1.5	-61.5	-78.0	-7.5	-0.5

Notes: This table is not directly comparable to Contracts Awarded data in Table E-1.

n/a = not available.

1/ Consists of general obligation bonds and reimbursable general obligation bonds.

2/ Consists of revenue bonds and special purpose revenue bonds.

3/ Includes special federal aid interstate; special federal aid primary; special federal aid secondary and federal funds.

Source: Department of Accounting and General Services, Report 300S.

Quarterly Statistical & Economic Report

March 1997

TERMS AND DEFINITIONS

All Others - includes all gross income from any business, trade, activity, occupation, or calling not included above.

Average Daily Visitor Census - is the average number of visitors present daily in the state. Figures are computed monthly by the Hawaii Visitors and Convention Bureau, based on arrival and departure dates from inflight questionnaires.

Civilian Employment - refers to persons 16 years of age or older, who during the survey week containing the 12th of the month were either at work for pay or profit, or worked without pay for 15 hours or more on a family farm or business, or were with a job but not at work. Both permanent and temporary employees and those who are working either full- or part-time are included.

Civilian Labor Force - is the total of employed and unemployed persons, excluding those in the armed forces and 16 years of age or under. Surveys are done by census from the Department of Labor.

Civilian Unemployment - is defined as persons who are 16 years of age or older, and (1) who did not work at all during the survey week but were actively seeking work and were available for work; or (2) who did not work at all, were available for work, and were waiting to be called back from layoff or were waiting to report to a new wage or salary job within 30 days.

Commissions - includes the gross income from activities which consists of commissions. Does not include the rendering of services by an employee to his/her employer.

Construction Jobs - are jobs held by any person engaged in construction, repairing, erecting, or improving buildings or structures of any type or description, and any installations therein. Such construction includes not only residential and non-residential building projects, both private and public, but also highway and road construction, street and sidewalk construction, repair, excavations, bridges, docks, and other heavy

Introduction

Part I - Economic Trends and Outlook

- State of the Economy
- Outlook of the Economy
- County Economic Conditions

Part II - Labor Force and Jobs - Overview

Part III - Income and Prices - Overview

Part IV - Tax Base and Revenues - Overview

Part V - Tourism - Overview

Part VI - Construction - Overview

Terms and Definitions

Archive

Statistics & Publications

construction projects.

Contracting - includes building contractors, land developers, architects, engineers, and pest control operators.

Contracting Tax Base - is the total receipts of businesses engaged in contracting to erect, construct, repair, or improve buildings or structures of any kind or description, or to make any installation therein. It is attributed to every business engaging in the practice of architecture, engineering, land surveying, landscape architecture, and the practice of pest control or fumigation.

Contribution to Social Insurance - are funds paid out to the federal government to satisfy FICA (social security) requirements.

Dividends, Interest, and Rent - is income derived from corporate earnings, bank accounts, real estate activity, other rental activity, and any other income based on investments.

Eastbound Visitors - represents those visitors who stayed in Hawaii for at least one night but less than one year (if students, less than six months), from Asia, Australia, and the Pacific. Since the Hawaii Visitors and Convention Bureau does not have a visitor profile encompassing the entire eastbound travel market, this figure is obtained by subtracting the westbound overnight or longer visitors from the total visitor arrivals.

General Excise (Gross Income) Tax - is a tax charged to businesses on the gross proceeds of sales or gross income. The tax rate is 1/2 of 1% on wholesaling and intermediary services, blind vendors, producing, manufacturing, sugar processing and pineapple canning; all other activities (retailing business and professional services, contracting, theater, amusement, radio, interest, commissions, rentals) are taxed at 4%, except insurance commissions received by general agents, subagents and solicitors, who are taxed at .15%.

General Excise and Use Tax Base - is the taxable sales of all goods and services. It is one of the most comprehensive measures of business activity in the state.

General Fund Tax Revenues - is the general government fund used to account for all financial resources except those required to be accounted for in another fund, such as the highway fund, capital improvement fund, or airport fund.

Government, State and Local - includes activities or expenditures of the

legislative and judicial branches, and some functions of the executive branch of government. It also includes expenditures for staff agencies such as the accounting, budget, purchasing, tax, and data processing offices.

Honolulu Consumer Price Index - is a measure of the average change in prices over time for a fixed market basket of goods and services published by the Bureau of Labor Statistics. The index measures price changes from a designated reference date (i.e., 1982-84), which equals 100.0. An increase of 7 percent, for example, is shown as 107.0. This change can also be expressed in dollars as follows: the price of a base period "market basket" of goods and services in the CPI has risen from \$100 in 1982-84 to \$107. Data are updated twice a year.

Hotel Jobs - are all jobs contained on a hotel payroll. The count varies between hotels depending on the reporting methods of the hotel.

Hotel Occupancy - is the percentage of occupied rooms in a hotel vis-à-vis the unoccupied rooms. Hotel occupancy rates depend not only on the number of visitors and their length of stay, but also on the hotel room inventory, e.g., a large increase in new hotel units results in a drop in occupancy rates, until such time as visitor traffic builds up enough to fill them. Rates are obtained from a sample survey conducted on a monthly basis.

Hotel Rental Tax Base - is the economic base from which all hotel business activity is taxed. Includes the furnishing of temporary accommodations in a hotel, or other place in which lodgings are regularly furnished to transients for compensation.

Hotel Rentals - includes gross income from the furnishing of temporary accommodations in a hotel, or other place in which lodgings are regularly furnished to transients for compensation.

Insurance Commissions - includes commissions received by a licensed solicitor, general agent, or sub-agent that is subject to the Hawaii insurance law.

Interest - includes interest and any gross income in the nature of interest received or derived from a business activity or from the investment of the capital of a business.

Labor Force - See Civilian Labor Force.

Manufacturing - includes compounding, canning, preserving, packing, printing, publishing, mailing, processing, refining, or preparing for sale,

profit, or commercial use, either directly or through the activity of others, in whole or in part, any article, substance, or commodity.

Manufacturing Jobs - are jobs in manufacturing industries, such as textiles, apparel, printing, publishing, food processing, and durable goods.

Manufacturing Tax Base - represents the tax base on all manufacturing activities, excluding sugar processing and pineapple canning. Manufacturing refers to any person or establishment who buys materials and performs work on such materials or processes, and changes such materials into a finished or semi-finished product. Direct wholesale and retail sales by manufacturers are not included in manufacturing tax sales.

Net Income Tax - is the tax rate for individuals as well as estates and trusts, ranging from 2.0% to 10.0% of taxable income. The allowable standard deduction amounts vary by filing status— \$1900 for married filing joint return or surviving spouse with dependent child; \$1500 for single; \$1650 for head of household, and \$950 for married filing separately. Tax rates for corporations are 4.4% up to \$25,000; 5.4% for \$25,000 to \$100,000; and 6.4% over \$100,000.

Non-Agricultural Wage and Salary Jobs - is derived monthly from a sample survey of employers reporting the number of persons who received pay for any part of the pay period containing the 12th of the month. Included are all full- and part-time non-agricultural workers, permanent and temporary workers, and workers on paid sick leave and paid vacation.

Other Labor Income - is labor income other than wages and salaries.

Other Rentals - includes rental income from real or personal property except the furnishing of transient accommodations in a hotel or other place in which lodgings are regularly furnished to transients for compensation.

Personal Income - is income received by all individuals in an economy from all sources, made up of wages and salaries, other labor income, and the difference between transfer payments and personal contributions for social insurance. This figure is compiled by the Bureau of Economic Analysis (BEA).

Price Index - is a weighted average of prices in the economy at any given time, divided by the prices of the same goods in a base year. For example, the Consumer Price Index is the ratio of an average of the prices of consumer goods in each month to the average prices of the same goods in 1982-84, the base year.

Producing - includes fishing, raising, or producing of agricultural, animal, or poultry products in their natural state (or butchered, dressed, or natural resource products). Also includes the sale of geothermal resources or electrical energy produced by geothermal resources.

Proprietors' Income - measures the earnings of unincorporated businesses, (proprietorships, partnerships, and producers' cooperatives), from their current business operations. It includes both farm and nonfarm businesses, but excludes capital gains and losses.

Retailing - includes all sales of tangible personal property to the customer for use or consumption and not for resale.

Retailing Tax Base - includes the general excise tax base on retailing, the tax base on the use tax, and the tax base on the sales by blind vendors. Retail sales include sales for consumption or use by the purchaser and not for resale. The general excise tax at the retail level (4%) is sometimes loosely called a sales tax. However, it differs from a typical sales tax in two respects: (1) it is a tax on the gross income of the seller rather than a tax on the purchase price of the buyer; (2) the retail excise tax in Hawaii applies to all retail sales (both goods and services) whereas most Mainland sales taxes exempt some commodities like food and services.

Services - includes all activities engaged in for other persons for a consideration which involve the rendering of a service as distinguished from the sale of tangible property or the production and sale of tangible property. Includes all professional services.

Services Tax Base - includes tax base data on establishments primarily engaged in providing a wide variety of services for individuals, business and government establishments, and other organizations; hotels and other lodging places; establishments providing personal, business, repair, and amusement services; health, legal, engineering, and other professional services; educational institutions; membership organizations and other miscellaneous services.

Tax Base - is the total amount of receipts in which taxes can be assessed.

Total Jobs - includes non-agricultural wage and salary workers, non-agricultural self-employed, unpaid family workers, domestics, and all agricultural workers. Persons on the payroll of more than one establishment during the pay period are counted in each establishment which reports them, if they received pay for any part of the specified pay period, but are not considered employed if they received no pay at all.

Total Visitors - represents those visitors who stayed in Hawaii for at least one night but less than one year (if students, less than six months). It includes both westbound arrivals (traveling from North America) and eastbound arrivals (traveling from Asia, Australia, and Oceania).

Transfer Payments - are payments made for which no goods or services are produced in return. Examples are welfare and social security.

Transient Accommodations Tax - is a tax levied on the furnishing of a room, apartment, suite or the like which is customarily occupied by the transient for less than 180 consecutive days for each letting by a hotel, apartment, motel, horizontal property regime or cooperative apartment, rooming house, or other place in which lodgings are generally furnished to transients for consideration. The tax is imposed at the rate of 6%. The registration fee for transient accommodations operators is a one-time fee of \$5 for each registration consisting of 1 to 5 units and \$15 for 6 or more units.

Unemployment Rate - is a ratio of unemployed persons divided by the civilian labor force.

Use Tax - is an excise tax levied on tangible personal property which is imported or purchased from an unlicensed seller for use in the state. The tax is based upon the purchase price or value of the tangible personal property purchased or imported, whichever is applicable. Rates: 1/2 of 1%, if for resale at retail; 4%, if for use or consumption.

Wages and Salaries - is income received for services rendered.

Westbound Visitors - represents those visitors who stayed in Hawaii for at least one night but less than one year (if students, less than six months), who are traveling from North America (Mainland U.S.).

Wholesaling - includes sales of tangible personal property to licensed persons for resale or incorporation into a product or project, and sales to certain leasing companies.