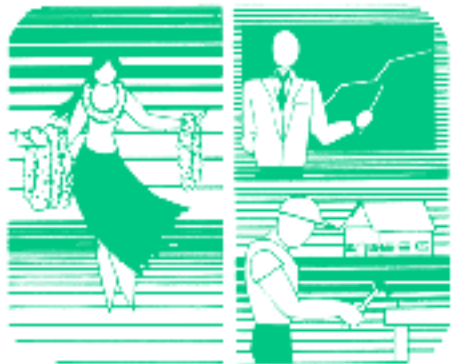
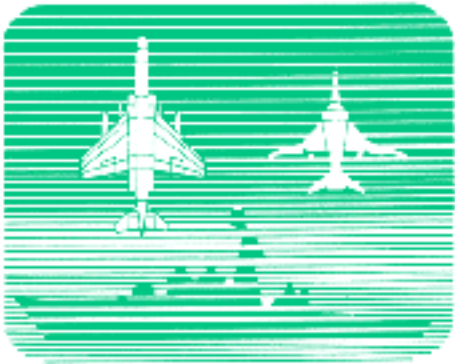




*QUARTERLY
STATISTICAL
& ECONOMIC
REPORT*



June 2000



This *Quarterly Statistical and Economic Report* has been prepared by the staff of the Research and Economic Analysis Division of the State Department of Business, Economic Development & Tourism (DBEDT). The report provides concise statistical information and analyses on Employment, Income and Prices, Taxes, Tourism, and Construction, as well as an overview of the State of Hawaii and the four counties.

Director, Dr. Seiji F. Naya, heads the department. This report was prepared under the direction of the division administrator, Dr. Pearl Imada Iboshi.

Technical notes and source descriptions have been kept to a minimum. However, the staff of the Research and Economic Analysis Division would be happy to respond to any inquiries of a technical nature that readers may have (586-2466). The quarterly information contained in this report reflects data received by the Research Division on or before June 21, 2000.

On-line availability of *Quarterly Statistical and Economic Report*

Since 1988, the Hawaii Department of Business, Economic Development & Tourism has had the *State of Hawaii Data Book* available on-line to anyone with a personal computer and a modem. Since 1997, the *Quarterly Statistical and Economic Report*, *State of Hawaii Data Book* and other DBEDT publications and information have been made available over the Internet at <http://www.hawaii.gov/dbedt/index.html>.

Beginning in March 2000, the printing of the entire QSER has been discontinued. The full version will be available on-line at <http://hawaii.gov/dbedt/qser.html> and an QSER Executive Summary at <http://www.hawaii.gov/dbedt/latest.html> and is available on request by fax or e-mail.

For further information about available data and sources, users should call the Research and Economic Analysis Division's Business Resource Center at (808) 586-2424.

This report has been catalogued as follows:

Hawaii. Dept. of Business, Economic Development and Tourism. Research and Economic Analysis Division.

Quarterly statistical and economic report-State of Hawaii. Honolulu: 1975-

Quarterly.

1. Hawaii-Statistics.
HA4007.H359

TABLE OF CONTENTS

	Page Number	
	On-Line	Exec
Part I. Economic Trends and Outlook		
State of the Economy	1	3
Figure 1. Annual Growth in Personal Income	2	
Outlook of the Economy	3	4
Actual and Forecast Key Economic Indicators for Hawaii: 1998-2003	4	5
County Economic Conditions	5	6
Table 1. 2000 Selected Economic Activities: State	6	7
Table 2. 2000 Selected Economic Activities: City and County of Honolulu	7	8
Table 3. 2000 Selected Economic Activities: Hawaii County	8	9
Table 4. 2000 Selected Economic Activities: Maui County	9	10
Table 5. 2000 Selected Economic Activities: Kauai County	10	11
Part II. Economic Overview and Data		
A. Labor Force and Jobs	11	12
A-1. Civilian Labor Force	12	
A-2. Civilian Employment	13	
A-3. Civilian Unemployment	14	
A-4. Civilian Unemployment Rate	15	
A-5. Non-Agricultural Wage and Salary Jobs	16	
A-6. Construction Jobs	17	
A-7. Manufacturing Jobs	18	
A-8. Transportation Jobs	19	
A-9. Communication Jobs	20	
A-10. Utilities Jobs	21	
A-11. Retail Trade Jobs	22	
A-12. Wholesale Trade Jobs	23	
A-13. Finance, Insurance and Real Estate Jobs	24	
A-14. Services Jobs	25	
A-15. Hotel Jobs	26	
A-16. Federal Government Jobs	27	
A-17. State Government Jobs	28	
A-18. Local Government Jobs	29	
A-19. Agriculture Wage and Salary Jobs	30	
A-20. Initial Agent Claims for Unemployment	31	
A-21. Initial Liable Claims for Unemployment	32	
B. Income and Prices	33	13
B-1. Personal Income for Hawaii by Major Sources	34	14
B-2. Personal Income	35	
B-3. Wages and Salaries	36	
B-4. Other Labor Income	37	
B-5. Proprietors' Income	38	
B-6. Dividends, Interest, and Rent	39	
B-7. Transfer Payments	40	
B-8. Personal Contributions to Social Insurance	41	
B-9. Honolulu and U.S. Consumer Price Index, All Urban Consumers (CPI-U) ..	42	15

TABLE OF CONTENTS - CON.

	Page Number	
	On-Line	Exec
C. Tax Revenues	43	16
Figure 2. Annual Growth in General Fund Revenue	44	
C-1. General Fund Tax Revenues and Major Components	45	17
C-2. State General Fund Tax Revenues.....	46	
C-3. General Excise & Use Tax Revenues	47	
C-4. Net Individual Income Tax Revenues	48	
C-5. Declaration of Estimated Taxes - Individual	49	
C-6. Payment with Returns - Individual	50	
C-7. Withholding Tax on Wages - Individual	51	
C-8. Refunds - Individual	52	
C-9. Net Corporate Income Tax Revenues.....	53	
C-10. Declaration of Estimated Taxes - Corporate	54	
C-11. Payment with Returns – Corporate.....	55	
C-12. Refunds – Corporate	56	
C-13. Transient Accommodations Tax Revenues	57	
Figure 3. Transient Accommodations Tax Revenues	58	
D. Tourism.....	59	18
D-1. Visitor Arrivals and Average Daily Visitor Census- By Air	60	19
D-2. Hotel Occupancy Rate.....	61	20
E. Construction	62	21
E-1. Estimated Value of Completed Construction, New Private Building Authorizations, and Government Contracts Awarded	63	22
E-2. Single Family Units Authorized.....	65	
E-3. Multi-Family Units Authorized	66	
E-4. Honolulu Construction Cost Index: Single Family Residence.....	67	
E-5. Honolulu Construction Cost Index: High-Rise Building	68	
E-6. Estimated Value of Private Building Construction Authorizations, By County	69	
E-7. Single Family Sales and Resales: Average Value.....	71	
E-8. Condominium Sales and Resales: Average Value	72	
E-9. Single Family Sales and Resales: Units	73	
E-10. Condominium Sales and Resales: Units.....	74	
E-11. State Government Capital Improvement Project Expenditures	75	
F. Other Indicators.....	76	24
F-1. Bankruptcy Filings	77	
Part III. Terms and Definitions	78	

STATE OF THE ECONOMY

Hawaii's economy continued to expand in the first quarter of 2000. Employment and jobs rose and unemployment fell. Personal income growth (available only through the fourth quarter 1999) grew strongly. Tax revenues, led by general excise tax receipts, were higher. Construction activity picked up. And bankruptcy filings continued to fall.

Civilian employment grew by 3.1 percent from the first quarter of 1999 through the first quarter 2000 (Table 1). At the same time, wage and salary jobs expanded by 1.9 percent. The recent simultaneous growth in both measures of the labor market reversed a long trend in which the number of jobs fell while employment rose. The reversal points to strength in Hawaii's economy.

Consistent with this strength, the unemployment rate fell to 4.6 percent in the first quarter. This was 1.3 percentage points lower than in the same quarter of 1999. In comparison, the first-quarter U.S. unemployment rate was 4.1 percent.

The number of wage and salary jobs increased across virtually all industries. Significantly, construction jobs grew by a remarkable 8.8 percent after many years of contraction. Solid growth was also seen in manufacturing (2.8 percent), trade (2.3 percent) and services (2.0 percent). The only sector with job losses was finance, insurance, and real estate (-1.9 percent).

In May, the U.S. Bureau of Economic Analysis released revised data for personal income by state through 1999. The revisions substantially raised the estimated growth rate for the third quarter to 4.8 percent and reported a 4.1 percent rate of growth for the fourth quarter (each relative to the year-

earlier quarter, Table B-2). For the year, nominal personal income grew by 3.6 percent. With the 1999 Honolulu Consumer Price Index about 1.0 percent higher than in 1998, real personal income growth for 1999 was about 2.5 percent.

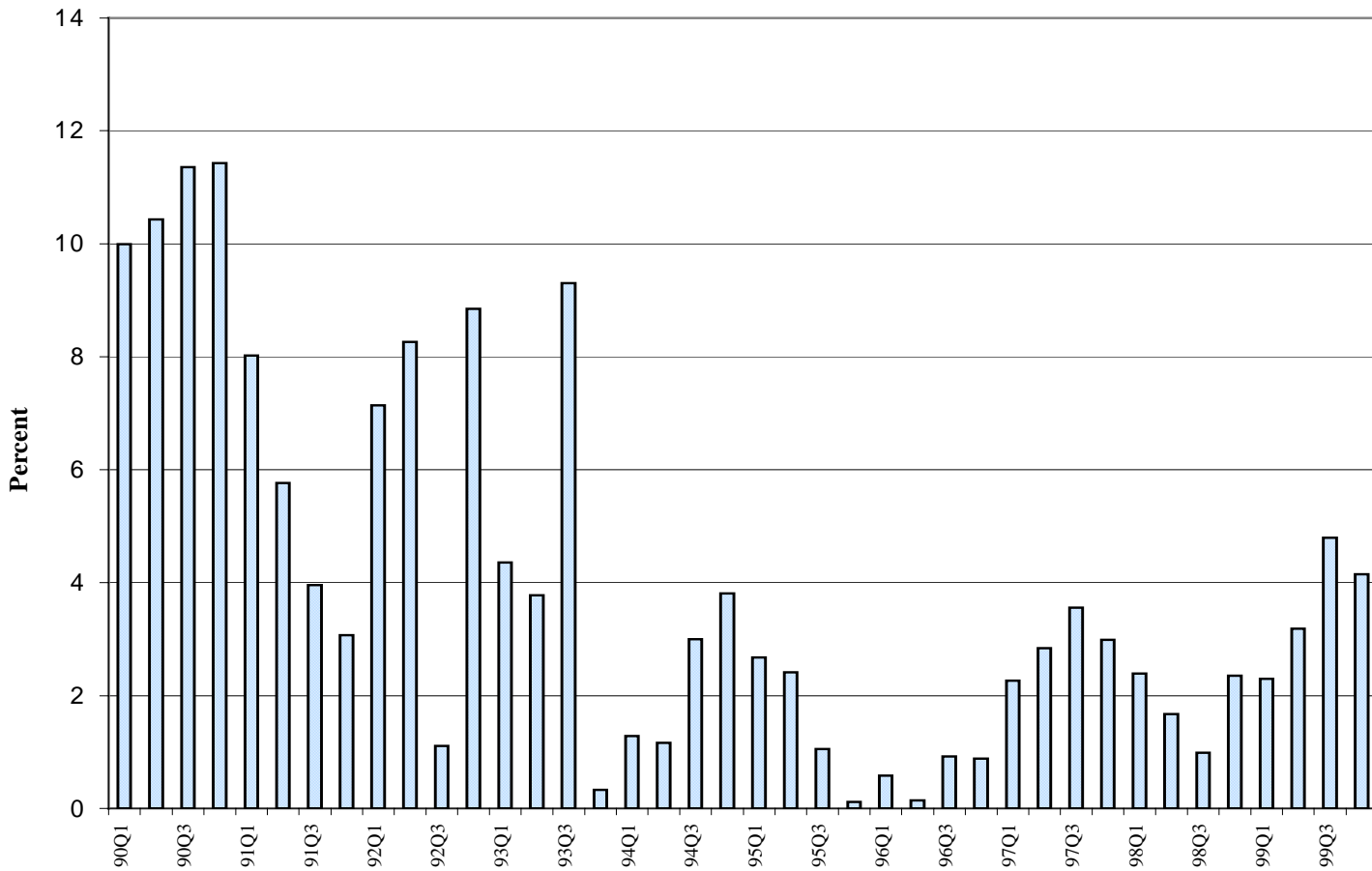
Tax revenues also reflected the increased economic activity. General fund revenues grew by 11.6 percent in the first quarter compared to the same quarter in 1999 (Table 1). Most of this growth came from a sharp 14.6 percent rise in general excise and use tax receipts. Personal income tax revenue also rose 3.6 percent in the first quarter, up from a decline in 1999 that reflected a reduction in individual income tax rates.

Visitor arrivals were about 2.0 percent higher in the first quarter than the same period last year. For statistical reasons the distinction between westbound and eastbound arrivals has been replaced by a distinction between domestic-flight visitors and international-flight visitors. Domestic-flight visitor arrivals were up by 4.8 percent, while international-flight visitor arrivals fell by 2.4 percent in the first quarter. More specifically, U.S. visitors grew by 9.8 percent over the period while Japanese visitor arrivals fell by 3.0 percent.

As suggested in the jobs data, construction activity has accelerated. The contracting tax base of the general excise tax grew by 19.9 percent in the first quarter, suggesting that the large increase in 1999 building authorizations is being translated into actual construction activity (Table E-1).

Finally, bankruptcy filings fell by 14 percent, continuing the string of quarterly drops that began last year (Table F-1).

Figure 1. Annual Growth in Personal Income
 [percentage change from same period in previous year]



Source: Table B-2. Personal Income.

OUTLOOK OF THE ECONOMY

The outlook for Hawaii's economy is decidedly brighter than even three months ago. Continuing strength of the Mainland economy, economic improvement in Japan, and recent robust Hawaii growth have led DBEDT to substantially raise its forecast for 2000 and beyond.

The Blue Chip Economic Indicators, a consensus forecast of approximately 50 U.S. forecasters, projects that the U.S. economy will grow at 4.8 percent in 2000 (forecast as of June 10, 2000). In 2001, the forecast growth rate is 3.3 percent. Inflation, as measured by the gross domestic product deflator, should remain low at 2.1 percent for both years.

California, a major influence on Hawaii's economy, enjoyed real personal income growth of 5.0 percent in 1999. The UCLA Anderson Forecast expects growth of 4.0 percent in 2000 and 3.2 percent in 2001. California employment in nonagricultural establishments grew 3.1 percent in 1999 and is forecast to grow by 3.8 percent in 2000 and by 2.6 percent in 2001.

On the international level, the Blue Chip forecasters expect Japan to grow by 1.2 percent in 2000 and by 1.8 percent in 2001. The Economic Planning Agency of Japan recently announced that first quarter 2000 real GDP grew by 10 percent on an annualized

basis from the previous quarter. Rates of growth above 6 percent are expected for South Korea, Taiwan, Singapore, and China for 2000.

Other sections of this report discuss Hawaii data in more detail, but a few pieces of information stand out and influenced the upward revision of DBEDT's forecast. First, wage and salary jobs are growing at 2.0 percent this year after many years of negative or very low growth. Much of this growth reflects increases in construction jobs. Second, personal income growth was particularly high (above 4.0 percent) in the second half of 1999. Finally, visitor days are running almost 4 percent higher than last year and may accelerate later in the year.

All of these factors led DBEDT to raise its forecast of economic activity this year compared to the forecast published in March 2000. As the accompanying table indicates, we expect visitor arrival growth to expand by 3.8 percent this year and 3.5 percent next year (compared to the 2.3 and 2.5 percent forecasts of March). Real personal income should grow by 3.5 percent in 2000 and by 3.0 percent in 2001 (compared to 2.3 and 2.5 percent as forecast in March). And wage and salary jobs should rise by 2.0 percent this year and by 1.7 percent in 2001 (compared to the 1.0 and 1.1 percent forecasts of March).

**ACTUAL AND FORECAST KEY ECONOMIC INDICATORS FOR HAWAII:
1998 TO 2003**

<i>Economic Indicators</i>	<i>1998 (actual)</i>	<i>1999 (actual)</i>	<i>2000 (forecast)</i>	<i>2001 (forecast)</i>	<i>2002 (forecast)</i>	<i>2003 (forecast)</i>
Total population (in thousands)	1,190.5	1,185.5	1,192.6	1,199.8	1,207.0	1,214.2
Visitor arrivals (in thousands)	6,738.2	6,848.5	7,108.7	7,357.5	7,600.3	7,851.2
Honolulu CPI-U (1982-84=100)	171.5	173.3	176.8	180.3	184.1	188.1
Personal income (in million dollars)	31,856.3 1/	33,006.0 1/	34,844.4	36,607.6	38,310.7	40,132.4
Personal income (in \$1992 million)	28,809.9	29,539.7	30,573.6	31,490.8	32,278.1	33,085.0
Total wage & salary jobs (in thousands)	538.8	541.4	552.2	561.6	570.0	578.5
Gross state product (in million dollars)	34,914.8	36,004.3	37,975.3	39,854.4	41,671.0	43,627.6
Real gross state product (in \$1992 million)	31,944.0	32,623.3	33,765.1	34,790.1	35,691.3	36,621.1
Gross state product deflator (1992=100)	109.3	110.4	112.5	114.6	116.8	119.1
Annual Percentage Change						
Total population (in thousands)	0.1	-0.4	0.6	0.6	0.6	0.6
Visitor arrivals (in thousands)	-2.0	1.6	3.8	3.5	3.3	3.3
Honolulu CPI-U (1982-84=100)	-0.2	1.0	2.0	2.0	2.1	2.2
Personal income (in million dollars)	1.8 1/	3.6 1/	5.6	5.1	4.7	4.8
Personal income (in \$1992 million)	2.1	2.5	3.5	3.0	2.5	2.5
Total wage & salary jobs (in thousands)	0.0	0.5	2.0	1.7	1.5	1.5
Gross state product (in million dollars)	2.0	3.1	5.5	4.9	4.6	4.7
Real gross state product (in \$1992 million)	2.2	2.1	3.5	3.0	2.6	2.6
Gross state product deflator (1992=100)	-0.2	1.0	1.9	1.9	1.9	2.0

1/ Revised by U.S. Bureau of Economic Analysis, May 17, 2000.

Source: Hawaii State Department of Business, Economic Development & Tourism, June 2000.

COUNTY ECONOMIC CONDITIONS

Neighbor Island economic activity continued to lead the way for the State in the first quarter. Growth in the City & County of Honolulu, while not as high, was still significant because of the county's size.

Civilian employment expanded in all counties, with the largest rates of growth in Kauai County (6.3 percent, Table 5) and Hawaii County (6.2 percent, Table 3). Maui County followed with 5.2 percent growth (Table 4), and in the City & County of Honolulu, employment expanded by 2.1 percent (Table 2).

The other measure of labor market activity, non-agricultural wage and salary jobs, had roughly the same distribution. Hawaii County led with 3.8 percent growth in jobs, followed by Kauai County (3.5 percent), Maui County (2.8 percent), and the City & County of Honolulu (1.5 percent).

The strong growth in construction jobs in the first quarter was almost entirely a Neighbor Island phenomenon. Construction jobs grew by 1.3 percent in the City & County of Honolulu, but by 45.5 percent in Hawaii County, 27.9 percent in Maui County, and 5.9 percent in Kauai County.

Other notable increases in private non-agricultural jobs included 6.1 percent and 12.5 percent growth in manufacturing for Maui County and Kauai County, respectively; 9.1 percent growth in transportation, communications, and utilities jobs in Kauai County; and 8.8 percent growth in health services jobs in Hawaii County.

Agricultural wage and salary jobs fell by 2.3 percent in the City & County of Honolulu, but increased dramatically in the other counties: Hawaii by 21.5 percent, Maui by 48.3 percent, and Kauai by 48.9 percent.

In the public sector, the eye-catching changes were in federal government jobs. These increased by 17.6 percent in Hawaii County, 20 percent in Maui County, and 28.6 percent in Kauai County. A significant part of the increase was due to hiring of census workers.

In the first quarter 2000, Hawaii County building authorizations increased by 59.0 percent and Maui County permit values grew by 111.8 percent (Table E-6). However, permit values fell by 22.8 percent in the City & County of Honolulu and by 13.2 percent in Kauai County.

Kauai County enjoyed the largest increase in visitor arrivals (3.3 percent) in the first quarter 2000 compared to the first quarter 1999 (Table 5). The City & County of Honolulu followed with an increase of 0.7 percent (Table 2), and Hawaii County had an increase of 0.2 percent (Table 3). The number of visitors to Maui fell by 0.8 percent over the period (Table 4). For the Neighbor Islands, increases in visitors came from the international-flight, rather than domestic-flight, segment. Honolulu's increase, however, came from domestic-flight visitors.

Hotel occupancy rates increased in all counties, with the largest increases in Kauai and Maui counties.

Table 1. 2000 SELECTED ECONOMIC ACTIVITIES: STATE OF HAWAII

SERIES	UNIT	1st QUARTER 2000		1999	
		NUMBER	% CHANGE YEAR AGO	NUMBER	% CHANGE YEAR AGO
Civilian labor force 1/	Persons	601,000	1.7	594,800	0.0
Civilian employment	Persons	573,250	3.1	561,500	0.7
Civilian unemployment	Persons	27,800	-20.6	33,300	-10.5
Unemployment rate 2/	%	4.6	-1.3	5.6	-0.7
Total non-agric. wage & salary jobs 1/	Jobs	538,300	1.9	533,700	0.5
Contract construction	Jobs	22,800	8.8	21,550	-0.5
Manufacturing	Jobs	16,600	2.8	16,450	0.0
Transport., comm., utilities	Jobs	40,950	1.1	41,000	-0.4
Trade	Jobs	133,750	2.3	132,700	0.4
Retail	Jobs	112,500	2.2	111,700	0.4
Finance, insur., & real estate	Jobs	34,400	-1.9	34,950	-1.5
Services & miscellaneous	Jobs	175,450	2.0	174,250	1.2
Hotels	Jobs	37,600	0.8	37,100	-1.7
Health	Jobs	35,850	1.7	35,650	1.0
Government	Jobs	114,350	1.4	112,800	0.5
Federal	Jobs	30,500	1.3	30,350	-0.2
State	Jobs	67,500	1.7	65,800	1.3
Local	Jobs	16,350	0.0	16,650	-1.2
Agriculture wage & salary jobs 1/	Jobs	7,850	11.3	7,700	2.0
State general fund revenues	\$1,000	765,790	11.6	2,841,290	-1.7
General excise and use tax revenues	\$1,000	422,222	14.3	1,454,731	1.3
Income-individual	\$1,000	247,130	3.6	1,053,858	-3.6
Declaration of estimated taxes	\$1,000	58,812	44.7	197,042	1.4
Payment with returns	\$1,000	10,644	-15.4	95,315	1.5
Withholding tax on wages	\$1,000	256,248	-0.4	977,157	-4.8
Refunds	\$1,000	78,575	9.2	215,656	-2.8
Transient accommodations tax	\$1,000	46,216	24.2	153,367	21.8
Visitor arrivals by air 3/	Persons	1,722,991	2.0	6,738,458	0.0
Domestic-flight visitors	Persons	1,071,927	4.9	4,253,337	0.2
International-flight visitors	Persons	651,064	-2.4	2,485,121	-0.3
Hotel occupancy rates 2/	%	78.2	1.2	72.1	0.6

1/ Labor force and jobs are averages based on monthly rounded data

2/ Change represents absolute change in rates rather than percentage change in rates

3/ Preliminary data.

Source: Hawaii State Department of Business, Economic Development & Tourism, Hawaii State Department of Labor & Industrial Relations; Hawaii State Department of Taxation; and Smith Travel Research PricewaterhouseCoopers LLP

**Table 2. 2000 SELECTED ECONOMIC ACTIVITIES:
CITY AND COUNTY OF HONOLULU**

SERIES	UNIT	1st QUARTER 2000		1999	
		NUMBER	% CHANGE YEAR AGO	NUMBER	% CHANGE YEAR AGO
Civilian labor force 1/	Persons	427,300	0.9	424,250	-0.8
Civilian employment	Persons	409,750	2.1	403,300	-0.3
Civilian unemployment	Persons	17,550	-20.4	20,950	-8.7
Unemployment rate 2/	%	4.1	-1.1	4.9	-0.4
Total non-agric. wage & salary jobs 1/	Jobs	401,900	1.5	399,450	-0.3
Contract construction	Jobs	15,950	1.3	15,900	-4.2
Manufacturing	Jobs	12,950	3.2	12,750	0.0
Transport., comm., utilities	Jobs	31,800	0.5	31,850	-2.2
Trade	Jobs	97,400	2.6	96,500	-0.4
Retail	Jobs	80,200	2.6	79,650	-0.1
Finance, insur., & real estate	Jobs	27,400	-2.5	27,950	-1.9
Services & miscellaneous	Jobs	124,800	1.9	124,000	0.6
Hotels	Jobs	16,100	-1.5	16,100	-4.2
Health	Jobs	28,900	0.9	28,750	-0.5
Government	Jobs	91,650	0.9	90,500	0.6
Federal	Jobs	28,500	0.5	28,550	-0.3
State	Jobs	51,900	1.5	50,450	1.2
Local	Jobs	11,250	0.0	11,450	-0.4
Agriculture wage & salary jobs 1/	Jobs	2,100	-2.3	2,200	0.0
General excise and use tax revenues	\$1,000	348,687	14.2	1,199,179	0.1
Income-individual	\$1,000	213,840	0.1	918,708	-4.5
Declaration of estimated taxes	\$1,000	39,480	35.7	147,790	-2.9
Payment with returns	\$1,000	8,199	-18.5	73,355	0.1
Withholding tax on wages	\$1,000	225,333	-0.2	860,132	-5.3
Refunds	\$1,000	59,172	15.2	162,570	-5.6
Transient accommodations tax	\$1,000	33,919	19.0	115,133	14.9
Visitor arrivals by air 3/	Persons	1,182,356	0.7	(NA)	(NA)
Domestic-flight visitors	Persons	589,835	4.4	(NA)	(NA)
International-flight visitors	Persons	592,521	-2.8	(NA)	(NA)
Hotel occupancy rates 2/	%	77.7	1.8	72.1	0.6

NA Not available.

1/ Labor force and jobs are averages based on monthly rounded data.

2/ Change represents absolute change in rates rather than percentage change in rates.

3/ Preliminary data. County-level data not yet revised.

Source: Hawaii State Department of Labor & Industrial Relations; Hawaii State Department of Taxation; Hawaii Visitors & Convention Bureau; and Smith Travel Research, PricewaterhouseCoopers LLP. Compiled by Hawaii State Department of Business, Economic Development & Tourism.

Table 3. 2000 SELECTED ECONOMIC ACTIVITIES: HAWAII COUNTY

SERIES	UNIT	1st QUARTER 2000		1999	
		NUMBER	% CHANGE YEAR AGO	NUMBER	% CHANGE YEAR AGO
Civilian labor force 1/	Persons	71,100	3.9	69,900	1.8
Civilian employment	Persons	66,400	6.2	63,850	2.9
Civilian unemployment	Persons	4,650	-21.2	6,050	-8.3
Unemployment rate 2/	%	6.5	-2.1	8.7	-1.0
Total non-agric. wage & salary jobs 1/	Jobs	52,600	3.8	51,300	2.8
Contract construction	Jobs	3,200	45.5	2,400	14.3
Manufacturing	Jobs	1,500	-3.2	1,550	3.3
Transport., comm., utilities	Jobs	2,850	0.0	2,850	0.0
Trade	Jobs	13,350	0.0	13,350	1.5
Retail	Jobs	11,200	-0.9	11,250	-0.4
Finance, insur., & real estate	Jobs	2,650	0.0	2,700	0.0
Services & miscellaneous	Jobs	18,150	3.7	17,800	4.4
Hotels	Jobs	6,550	0.0	6,450	-2.3
Health	Jobs	3,100	8.8	3,000	13.2
Government	Jobs	10,850	3.3	10,600	1.0
Federal	Jobs	1,000	17.6	850	-5.6
State	Jobs	7,650	3.4	7,450	2.1
Local	Jobs	2,250	0.0	2,300	0.0
Agriculture wage & salary jobs 1/	Jobs	2,450	14.0	2,450	-2.0
General excise and use tax revenues	\$1,000	28,188	18.1	94,302	3.9
Income-individual	\$1,000	12,466	7.5	56,528	2.2
Declaration of estimated taxes	\$1,000	6,631	49.7	19,257	10.7
Payment with returns	\$1,000	1,104	-4.6	9,230	3.5
Withholding tax on wages	\$1,000	11,874	-10.0	47,449	-1.0
Refunds	\$1,000	7,142	-0.6	19,408	2.6
Transient accommodations tax	\$1,000	2,833	21.5	8,612	20.3
Visitor arrivals by air 3/	Persons	324,948	0.2	(NA)	(NA)
Domestic-flight visitors	Persons	233,598	-3.8	(NA)	(NA)
International-flight visitors	Persons	91,350	12.2	(NA)	(NA)
Hotel occupancy rates 2/	%	74.6	0.3	65.5	-3.9

NA Not available.

1/ Labor force and jobs are averages based on monthly rounded data.

2/ Change represents absolute change in rates rather than percentage change in rates.

3/ Preliminary. County-level data not yet revised.

Source: Hawaii State Department of Labor & Industrial Relations; Hawaii State Department of Taxation; Hawaii Visitors & Convention Bureau; and Smith Travel Research, PricewaterhouseCoopers LLP. Compiled by Hawaii State Department of Business, Economic Development & Tourism.

Table 4. 2000 SELECTED ECONOMIC ACTIVITIES: MAUI COUNTY

SERIES	UNIT	1st QUARTER 2000		1999	
		NUMBER	% CHANGE YEAR AGO	NUMBER	% CHANGE YEAR AGO
Civilian labor force 1/	Persons	72,900	3.3	71,650	2.3
Civilian employment	Persons	69,400	5.2	67,550	3.5
Civilian unemployment	Persons	3,550	-21.1	4,100	-13.7
Unemployment rate 2/	%	4.9	-1.5	5.7	-1.1
Total non-agric. wage & salary jobs 1/	Jobs	59,000	2.8	58,350	3.2
Contract construction	Jobs	2,750	27.9	2,400	17.1
Manufacturing	Jobs	1,750	6.1	1,750	0.0
Transport., comm., utilities	Jobs	4,550	3.4	4,500	11.1
Trade	Jobs	15,850	1.0	15,800	2.9
Retail	Jobs	14,450	1.8	14,250	2.5
Finance, insur., & real estate	Jobs	3,100	0.0	3,100	1.6
Services & miscellaneous	Jobs	23,300	1.5	23,200	2.0
Hotels	Jobs	11,300	3.7	10,950	1.4
Health	Jobs	2,350	2.2	2,400	4.3
Government	Jobs	7,750	2.6	7,650	0.7
Federal	Jobs	600	20.0	550	10.0
State	Jobs	5,350	3.9	5,250	1.0
Local	Jobs	1,800	-2.7	1,900	0.0
Agriculture wage & salary jobs 1/	Jobs	2,250	18.4	2,150	7.5
General excise and use tax revenues	\$1,000	34,721	13.8	122,966	10.1
Income-individual	\$1,000	15,659	58.4	57,584	2.4
Declaration of estimated taxes	\$1,000	9,678	90.0	21,878	21.3
Payment with returns	\$1,000	893	-7.1	8,852	6.6
Withholding tax on wages	\$1,000	14,246	6.0	50,650	-1.2
Refunds	\$1,000	9,159	-4.7	23,795	11.2
Transient accommodations tax	\$1,000	7,919	48.3	24,409	59.5
Visitor arrivals by air 3/	Persons	557,510	-0.8	(NA)	(NA)
Domestic-flight visitors	Persons	443,318	-4.3	(NA)	(NA)
International-flight visitors	Persons	114,192	15.7	(NA)	(NA)
Hotel occupancy rates 2/ 4/	%	85.7	5.3	77.4	4.1

NA Not available.

1/ Labor force and jobs are averages based on monthly rounded data.

2/ Change represents absolute change in rates rather than percentage change in rates

3/ Preliminary. County-level data not yet revised

4/ Data represent Maui Island only.

Source: Hawaii State Department of Labor & Industrial Relations; Hawaii State Department of Taxation
Hawaii Visitors & Convention Bureau; and Smith Travel Research, PricewaterhouseCoopers LLP. Compiled by
Hawaii State Department of Business, Economic Development & Tourism.

Table 5. 2000 SELECTED ECONOMIC ACTIVITIES: KAUAI COUNTY

SERIES	UNIT	1st QUARTER 2000		1999	
		NUMBER	% CHANGE YEAR AGO	NUMBER	% CHANGE YEAR AGO
Civilian labor force 1/	Persons	29,750	4.2	29,000	1.0
Civilian employment	Persons	27,700	6.3	26,800	3.7
Civilian unemployment	Persons	2,050	-18.0	2,250	-21.1
Unemployment rate 2/	%	6.9	-1.9	7.8	-2.2
Total non-agric. wage & salary jobs 1/	Jobs	24,850	3.5	24,600	2.9
Contract construction	Jobs	900	5.9	850	-5.6
Manufacturing	Jobs	450	12.5	450	12.5
Transport., comm., utilities	Jobs	1,800	9.1	1,750	6.1
Trade	Jobs	7,150	3.6	7,050	4.4
Retail	Jobs	6,650	3.9	6,550	4.8
Finance, insur., & real estate	Jobs	1,300	4.0	1,250	0.0
Services & miscellaneous	Jobs	9,250	2.2	9,300	3.9
Hotels	Jobs	3,700	4.2	3,600	1.4
Health	Jobs	1,450	-3.3	1,500	3.4
Government	Jobs	4,100	3.8	4,050	1.3
Federal	Jobs	450	28.6	350	0.0
State	Jobs	2,650	3.9	2,600	2.0
Local	Jobs	1,050	5.0	1,050	-4.5
Agriculture wage & salary jobs 1/	Jobs	1,000	25.0	900	12.5
General excise and use tax revenues	\$1,000	10,624	12.3	38,284	6.1
Income-individual	\$1,000	5,164	49.3	21,038	4.7
Declaration estimated taxes	\$1,000	3,022	49.3	8,118	23.4
Payment with returns	\$1,000	448	11.5	3,878	11.3
With holding tax on wages	\$1,000	4,796	-0.6	18,926	-2.3
Refunds	\$1,000	3,101	-18.2	9,884	5.9
Transient accommodations tax	\$1,000	1,546	48.9	5,213	60.1
Visitor arrivals by air 3/	Persons	258,438	3.3	(NA)	(NA)
Domestic-flight visitors	Persons	204,049	-4.7	(NA)	(NA)
International-flight visitors	Persons	54,389	50.7	(NA)	(NA)
Hotel occupancy rates 2/	%	76.0	7.8	70.3	4.2

NA Not available.

1/ Labor force and jobs are averages based on monthly rounded data.

2/ Change represents absolute change in rates rather than percentage change in rates.

3/ Preliminary. County-level data not yet revised.

Source: Hawaii State Department of Labor & Industrial Relations; Hawaii State Department of Taxation; Hawaii Visitors & Convention Bureau; and Smith Travel Research, PricewaterhouseCoopers LLP. Compiled by Hawaii State Department of Business, Economic Development & Tourism.

A. LABOR FORCE AND JOBS

Hawaii's labor market showed clear signs of economic recovery in the first quarter. Both civilian employment and the number of wage and salary jobs grew strongly. The unemployment rate continued to drop. With few exceptions, job increases were spread across the entire economy.

These observations of Hawaii's labor force and jobs by industry reflect 1997-1999 DLIR data rebenchmarked in April 2000.

By more than one measure, Hawaii's labor market is the largest it has ever been. The civilian labor force (non-military, over age 16 either working or looking for work) topped 600,000 for the first time in the first quarter of 2000 (Table A-1). Civilian employment grew 3.1 percent from the first quarter of 1999 to the first quarter 2000 to the highest level in Hawaii's history (Table A-2).

On the other side of employment, Hawaii's unemployment rate stood at 4.6 percent in the first quarter of the year, falling below the 5.0 percent level for the second time since 1993 (Table A-4; the first drop below 5.0 percent since 1993 came in the fourth quarter 1999).

Non-agricultural wage and salary jobs expanded by 1.9 percent in the first quarter 2000 compared to the year-earlier quarter (Table A-5). Until recently, non-agricultural wage and salary jobs had been falling even as civilian employment expanded. The fact that these jobs are now rising with civilian employment suggests sustained strength in Hawaii's economy. However non-agricultural jobs have not yet reached the levels seen in 1992 and 1993.

Construction jobs grew by a fast 8.8 percent in the first quarter (Table A-6). This

was the fastest rate of growth since the fourth quarter of 1990. As discussed in the section "County Economic Conditions," much of this growth has occurred on the Neighbor Islands.

Other industries that enjoyed wage and salary job growth in the first quarter included services (2.0 percent, Table A-14), retail trade and wholesale trade (each up 2.2 percent, Tables A-11 and A-12), transportation (1.5 percent, Table A-8), and communications (0.7 percent, Table A-9).

Two sectors experienced job losses in the first quarter: utilities (-1.5 percent, Table A-10), and finance, insurance and real estate (-0.6 percent, Table A-13).

Manufacturing and agriculture deserve special mention. Jobs in both sectors have declined secularly since the 1970s. Recently, however, both sectors have seen job increases. Manufacturing jobs rose by 2.8 percent in the first quarter of 2000 over the first quarter of 1999 (Table A-7) and agricultural jobs jumped by 11.3 percent over the same period (Table A-19). While clearer for agriculture than manufacturing, both industries may have reached levels where the long-run declines have ended and a new period of stability or growth is beginning.

Public sector jobs also grew in the first quarter, but the rates of increase were lower than the 1.9 percent increase in total non-agricultural wage and salary jobs. Federal government jobs expanded by 1.3 percent (Table A-16) and state government jobs increased by 1.7 percent (Table A-17). Local government jobs remained unchanged in the first quarter of 2000 relative to the year-earlier quarter (Table A-18).

Table A-1. CIVILIAN LABOR FORCE

<i>Year</i>	<i>First Quarter</i>	<i>Second Quarter</i>	<i>Third Quarter</i>	<i>Fourth Quarter</i>	<i>Annual</i>
Number of Persons					
1982	455,300	461,300	463,750	463,700	461,000
1983	469,050	473,950	472,800	472,250	472,000
1984	471,800	473,650	470,750	471,800	472,000
1985	475,350	477,200	478,450	485,000	479,000
1986	485,300	488,850	493,950	499,900	492,000
1987	505,950	513,000	516,250	520,800	514,000
1988	515,400	519,400	518,950	518,200	518,000
1989	519,350	526,700	521,900	528,050	524,000
1990	531,950	539,750	544,650	551,650	542,000
1991	568,750	573,050	576,100	577,100	573,750
1992	579,250	582,950	585,400	588,700	584,050
1993	587,000	588,000	585,100	583,800	586,000
1994	581,500	581,850	580,100	577,100	580,150
1995	573,300	576,300	577,400	578,750	576,400
1996	588,000	593,200	595,950	597,300	593,600
1997	594,400	595,650	596,100	592,700	594,700
1998	592,650	595,850	597,000	594,550	595,000
1999	590,950	594,000	595,900	598,400	594,800
2000	601,000	(NA)	(NA)	(NA)	(NA)
Percentage Change from the Same Period in Previous Year					
1982	1.4	2.3	2.7	2.5	2.2
1983	3.0	2.7	2.0	1.8	2.4
1984	0.6	-0.1	-0.4	-0.1	0.0
1985	0.8	0.7	1.6	2.8	1.5
1986	2.1	2.4	3.2	3.1	2.7
1987	4.3	4.9	4.5	4.2	4.5
1988	1.9	1.2	0.5	-0.5	0.8
1989	0.8	1.4	0.6	1.9	1.2
1990	2.4	2.5	4.4	4.5	3.4
1991	6.9	6.2	5.8	4.6	5.9
1992	1.8	1.7	1.6	2.0	1.8
1993	1.3	0.9	-0.1	-0.8	0.3
1994	-0.9	-1.0	-0.9	-1.1	-1.0
1995	-1.4	-1.0	-0.5	0.3	-0.6
1996	2.6	2.9	3.2	3.2	3.0
1997	1.1	0.4	0.0	-0.8	0.2
1998	-0.3	0.0	0.2	0.3	0.1
1999	-0.3	-0.3	-0.2	0.6	0.0
2000	1.7	(NA)	(NA)	(NA)	(NA)

NA Not available.

Quarterly averages are computed by the Hawaii State Department of Business, Economic Development & Tourism from the Hawaii State Department of Labor & Industrial Relations monthly rounded data; Data from 1997 were rebenchmarked by DLIR in April 2000

Source: Hawaii State Department of Labor & Industrial Relations

Table A-2. CIVILIAN EMPLOYMENT

<i>Year</i>	<i>First Quarter</i>	<i>Second Quarter</i>	<i>Third Quarter</i>	<i>Fourth Quarter</i>	<i>Annual</i>
Number of Persons					
1982	426,850	427,850	429,850	435,400	430,000
1983	438,550	440,000	444,100	445,350	442,000
1984	446,050	447,000	442,900	444,000	445,000
1985	449,250	450,400	449,800	458,600	452,000
1986	461,850	464,800	468,200	477,200	468,000
1987	484,250	492,150	494,700	504,900	494,000
1988	500,650	501,300	502,250	503,800	502,000
1989	505,200	512,250	511,800	514,750	511,000
1990	517,300	523,100	529,100	538,550	527,000
1991	553,950	557,100	559,400	560,600	557,750
1992	557,400	555,650	556,300	560,400	557,450
1993	560,600	563,050	560,600	559,350	560,900
1994	549,150	545,200	541,600	544,050	545,000
1995	540,750	541,700	541,500	546,550	542,650
1996	551,800	554,150	556,400	560,600	555,750
1997	557,100	555,950	556,050	557,600	556,650
1998	556,800	557,400	557,800	559,300	557,850
1999	555,950	558,600	562,200	569,150	561,500
2000	573,250	(NA)	(NA)	(NA)	(NA)
Percentage Change from the Same Period in Previous Year					
1982	0.1	0.2	0.6	1.9	0.7
1983	2.7	2.8	3.3	2.3	2.8
1984	1.7	1.6	-0.3	-0.3	0.7
1985	0.7	0.8	1.6	3.3	1.6
1986	2.8	3.2	4.1	4.1	3.5
1987	4.9	5.9	5.7	5.8	5.6
1988	3.4	1.9	1.5	-0.2	1.6
1989	0.9	2.2	1.9	2.2	1.8
1990	2.4	2.1	3.4	4.6	3.1
1991	7.1	6.5	5.7	4.1	5.8
1992	0.6	-0.3	-0.6	0.0	-0.1
1993	0.6	1.3	0.8	-0.2	0.6
1994	-2.0	-3.2	-3.4	-2.7	-2.8
1995	-1.5	-0.6	0.0	0.5	-0.4
1996	2.0	2.3	2.8	2.6	2.4
1997	1.0	0.3	-0.1	-0.5	0.2
1998	-0.1	0.3	0.3	0.3	0.2
1999	-0.2	0.2	0.8	1.8	0.7
2000	3.1	(NA)	(NA)	(NA)	(NA)

NA Not available.

Quarterly averages are computed by the Hawaii State Department of Business, Economic Development & Tourism from the Hawaii State Department of Labor & Industrial Relations monthly rounded data.

Data from 1997 were rebenchmarked by DLIR in April 2000

Source: Hawaii State Department of Labor & Industrial Relations

Table A-3. CIVILIAN UNEMPLOYMENT

<i>Year</i>	<i>First Quarter</i>	<i>Second Quarter</i>	<i>Third Quarter</i>	<i>Fourth Quarter</i>	<i>Annual</i>
Number of Persons					
1982	28,400	33,450	33,850	28,250	31,000
1983	30,450	33,900	28,700	26,900	30,000
1984	25,750	26,600	27,850	27,800	27,000
1985	26,100	26,800	28,650	26,450	27,000
1986	23,500	24,050	25,750	22,700	24,000
1987	21,700	20,850	21,550	15,900	20,000
1988	14,750	18,150	16,700	14,450	16,000
1989	14,200	14,450	10,100	13,300	13,000
1990	14,650	16,650	15,550	13,100	15,000
1991	14,800	15,900	16,700	16,500	16,000
1992	21,850	27,300	29,100	28,300	26,650
1993	26,450	25,000	24,500	24,400	25,100
1994	32,350	36,650	38,550	33,100	35,150
1995	32,500	34,600	35,850	32,200	33,800
1996	36,200	39,050	39,550	36,650	37,850
1997	37,300	39,700	40,050	35,150	38,050
1998	35,850	38,400	39,200	35,250	37,150
1999	35,000	35,350	33,700	29,250	33,350
2000	27,800	(NA)	(NA)	(NA)	(NA)
Percentage Change from the Same Period in Previous Year					
1982	24.8	40.5	41.0	11.0	29.2
1983	7.2	1.3	-15.2	-4.8	-3.2
1984	-15.4	-21.5	-3.0	3.3	-10.0
1985	1.4	0.8	2.9	-4.9	0.0
1986	-10.0	-10.3	-10.1	-14.2	-11.1
1987	-7.7	-13.3	-16.3	-30.0	-16.7
1988	-32.0	-12.9	-22.5	-9.1	-20.0
1989	-3.7	-20.4	-39.5	-8.0	-18.8
1990	3.2	15.2	54.0	-1.5	15.4
1991	1.0	-4.5	7.4	26.0	6.7
1992	47.6	71.7	74.3	71.5	66.6
1993	21.1	-8.4	-15.8	-13.8	-5.8
1994	22.3	46.6	57.3	35.7	40.0
1995	0.5	-5.6	-7.0	-2.7	-3.8
1996	11.4	12.9	10.3	13.8	12.0
1997	3.0	1.7	1.3	-4.1	0.5
1998	-3.9	-3.3	-2.1	0.3	-2.4
1999	-2.4	-7.9	-14.0	-17.0	-10.2
2000	-20.6	(NA)	(NA)	(NA)	(NA)

NA Not available.

Quarterly averages are computed by the Hawaii State Department of Business, Economic Development & Tourism from the Hawaii State Department of Labor & Industrial Relations monthly rounded data.

Data from 1997 were rebenchmarked by DLIR in April 2000

Source: Hawaii State Department of Labor & Industrial Relations

Table A-4. CIVILIAN UNEMPLOYMENT RATE

Year	First Quarter	Second Quarter	Third Quarter	Fourth Quarter	Annual
Percent of the Civilian Labor Force					
1982	6.2	7.3	7.3	6.1	6.7
1983	6.5	7.2	6.1	5.7	6.5
1984	5.5	5.6	5.9	5.9	5.6
1985	5.5	5.6	6.0	5.4	5.6
1986	4.8	4.9	5.2	4.5	4.8
1987	4.3	4.1	4.2	3.1	3.8
1988	2.9	3.5	3.2	2.8	3.1
1989	2.7	2.7	1.9	2.5	2.5
1990	2.8	3.1	2.9	2.4	2.8
1991	2.6	2.8	2.9	2.9	2.8
1992	3.8	4.7	5.0	4.8	4.6
1993	4.5	4.3	4.2	4.2	4.3
1994	5.6	6.3	6.6	5.7	6.1
1995	5.7	6.0	6.2	5.6	5.9
1996	6.2	6.6	6.6	6.1	6.4
1997	6.3	6.7	6.7	5.9	6.4
1998	6.0	6.4	6.6	5.9	6.2
1999	5.9	6.0	5.7	4.9	5.5
2000	4.6	(NA)	(NA)	(NA)	(NA)

NA Not available.

Quarterly averages are computed by the Hawaii State Department of Business, Economic Development & Tourism from the Hawaii State Department of Labor & Industrial Relations monthly rounded data. Data from 1997 were rebenchmarked by DLIR in April 2000

Source: Hawaii State Department of Labor & Industrial Relations

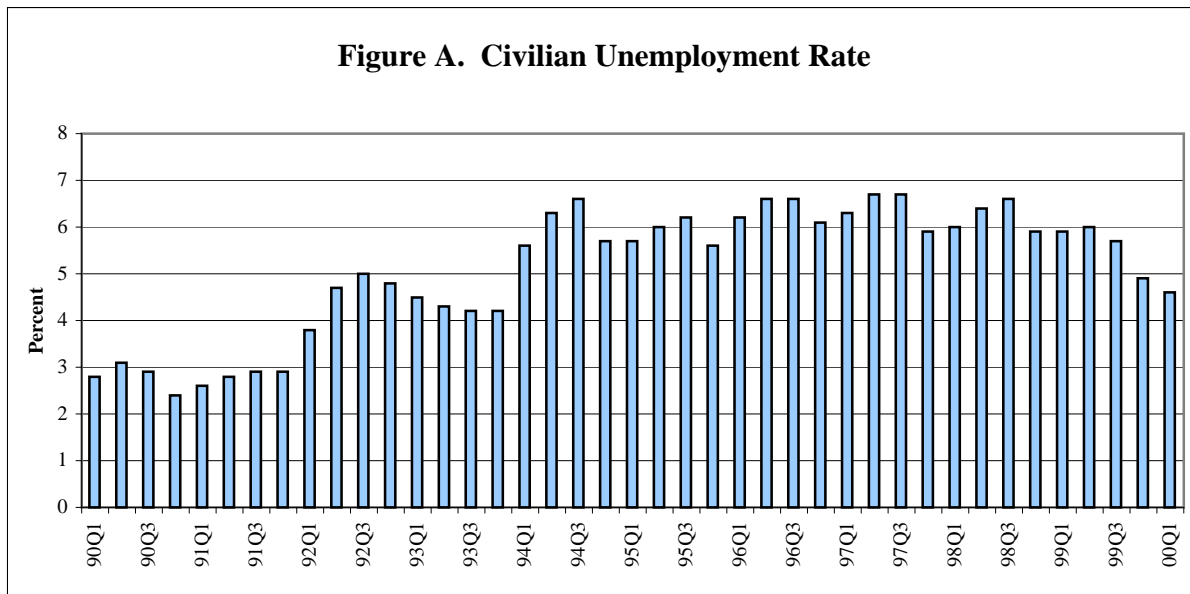


Table A-5. NON-AGRICULTURAL WAGE AND SALARY JOBS

<i>Year</i>	<i>First Quarter</i>	<i>Second Quarter</i>	<i>Third Quarter</i>	<i>Fourth Quarter</i>	<i>Annual</i>
Number of Jobs					
1982	400,800	401,300	397,350	398,100	399,400
1983	403,550	403,450	407,400	410,500	406,200
1984 1/	409,950	414,700	410,350	415,700	412,100
1985	419,950	423,700	426,950	432,350	425,750
1986	432,850	435,800	438,150	447,450	438,550
1987	451,900	459,000	458,450	470,550	459,950
1988	470,400	476,900	476,750	488,200	478,050
1989	495,450	503,100	504,000	519,350	505,450
1990	520,000	528,600	525,750	539,150	528,400
1991	537,950	537,300	536,100	545,200	539,150
1992	543,100	544,650	538,700	544,700	542,800
1993	540,100	543,450	532,300	539,800	538,900
1994	535,450	538,050	530,450	540,750	536,200
1995	536,000	536,200	526,000	533,150	532,850
1996	531,200	531,650	525,800	534,350	530,750
1997	532,900	533,400	526,350	533,400	531,500
1998	529,800	533,050	527,600	534,650	531,250
1999	528,250	534,750	531,900	539,900	533,700
2000	538,300	(NA)	(NA)	(NA)	(NA)
Percentage Change from the Same Period in Previous Year					
1982	-1.4	-1.4	-1.5	-1.1	-1.3
1983	0.7	0.5	2.5	3.1	1.7
1984 1/	1.6	2.8	0.7	1.3	1.5
1985	2.4	2.2	4.0	4.0	3.3
1986	3.1	2.9	2.6	3.5	3.0
1987	4.4	5.3	4.6	5.2	4.9
1988	4.1	3.9	4.0	3.8	3.9
1989	5.3	5.5	5.7	6.4	5.7
1990	5.0	5.1	4.3	3.8	4.5
1991	3.5	1.6	2.0	1.1	2.0
1992	1.0	1.4	0.5	-0.1	0.7
1993	-0.6	-0.2	-1.2	-0.9	-0.7
1994	-0.9	-1.0	-0.3	0.2	-0.5
1995	0.1	-0.3	-0.8	-1.4	-0.6
1996	-0.9	-0.8	0.0	0.2	-0.4
1997	0.3	0.3	0.1	-0.2	0.1
1998	-0.6	-0.1	0.2	0.2	0.0
1999	-0.3	0.3	0.8	1.0	0.5
2000	1.9	(NA)	(NA)	(NA)	(NA)

NA Not available.

Quarterly averages are computed by the Hawaii State Department of Business, Economic Development & Tourism from the Hawaii State Department of Labor & Industrial Relations monthly rounded data. Data from 1998 were rebenchmarked by DLIR in April 2000

1/ Quarterly data contain monthly unrevised numbers

Source: Hawaii State Department of Labor & Industrial Relations

Table A-6. CONSTRUCTION JOBS

<i>Year</i>	<i>First Quarter</i>	<i>Second Quarter</i>	<i>Third Quarter</i>	<i>Fourth Quarter</i>	<i>Annual</i>
Number of Jobs					
1982	18,950	18,100	17,400	16,900	17,850
1983	18,100	17,800	17,900	17,500	17,800
1984	16,950	16,950	15,700	13,550	15,800
1985	16,000	16,950	17,900	17,850	17,150
1986	17,400	17,550	19,400	20,200	18,650
1987	20,600	21,200	21,500	21,500	21,200
1988	21,700	23,000	24,000	24,900	23,400
1989	26,500	28,600	30,150	31,500	29,200
1990	30,900	31,450	32,950	34,000	32,300
1991	33,450	33,800	33,950	33,000	33,550
1992	31,200	31,000	31,300	32,600	31,550
1993	32,650	32,650	32,500	31,500	32,350
1994	29,450	29,300	29,550	28,450	29,200
1995	26,500	26,150	26,650	25,800	26,300
1996	23,750	23,600	24,000	23,350	23,650
1997	22,350	21,950	22,450	22,350	22,300
1998	21,150	21,400	22,050	21,900	21,650
1999	20,950	21,400	21,900	21,900	21,550
2000	22,800	(NA)	(NA)	(NA)	(NA)
Percentage Change from the Same Period in Previous Year					
1982	-17.4	-18.8	-20.4	-17.6	-18.5
1983	-4.5	-1.7	2.9	3.6	-0.3
1984	-6.4	-4.8	-12.3	-22.6	-11.2
1985	-5.6	0.0	14.0	31.7	8.5
1986	8.8	3.5	8.4	13.2	8.7
1987	18.4	20.8	10.8	6.4	13.7
1988	5.3	8.5	11.6	15.8	10.4
1989	22.1	24.3	25.6	26.5	24.8
1990	16.6	10.0	9.3	7.9	10.6
1991	8.3	7.5	3.0	-2.9	3.9
1992	-6.7	-8.3	-7.8	-1.2	-6.0
1993	4.6	5.3	3.8	-3.4	2.5
1994	-9.8	-10.3	-9.1	-9.7	-9.7
1995	-10.0	-10.8	-9.8	-9.3	-9.9
1996	-10.4	-9.8	-9.9	-9.5	-10.1
1997	-5.9	-7.0	-6.5	-4.3	-5.7
1998	-5.4	-2.5	-1.8	-2.0	-2.9
1999	-0.9	0.0	-0.7	0.0	-0.5
2000	8.8	(NA)	(NA)	(NA)	(NA)

NA Not available.

Quarterly averages are computed by the Hawaii State Department of Business, Economic Development & Tourism from the Hawaii State Department of Labor & Industrial Relations monthly rounded data. Data from 1998 were rebenchmarked by DLIR in April 2000.

Source: Hawaii State Department of Labor & Industrial Relations

Table A-7. MANUFACTURING JOBS

<i>Year</i>	<i>First Quarter</i>	<i>Second Quarter</i>	<i>Third Quarter</i>	<i>Fourth Quarter</i>	<i>Annual</i>
Number of Jobs					
1982	21,600	22,800	23,700	21,600	22,400
1983	22,000	22,250	23,500	21,650	22,350
1984	21,550	21,950	22,500	21,450	21,900
1985	21,400	21,950	22,400	21,950	21,900
1986	21,750	22,350	22,300	21,800	22,050
1987	21,850	21,900	22,050	21,800	21,900
1988	21,750	22,200	22,200	21,700	22,000
1989	21,600	21,400	21,550	21,350	21,500
1990	21,100	21,000	21,150	20,950	21,050
1991	20,550	20,350	20,600	20,300	20,450
1992	19,700	19,650	20,000	19,400	19,700
1993	19,300	19,250	19,350	18,750	19,150
1994	17,850	18,000	17,850	17,400	17,750
1995	16,800	16,850	17,200	17,050	17,000
1996	16,700	16,650	16,750	16,600	16,650
1997	16,600	16,600	16,650	16,400	16,550
1998	16,350	16,350	16,550	16,450	16,450
1999	16,150	16,400	16,650	16,650	16,450
2000	16,600	(NA)	(NA)	(NA)	(NA)
Percentage Change from the Same Period in Previous Year					
1982	-3.6	-4.2	-1.0	-0.7	-2.6
1983	1.9	-2.4	-0.8	0.2	-0.2
1984	-2.0	-1.3	-4.3	-0.9	-2.0
1985	-0.7	0.0	-0.4	2.3	0.0
1986	1.6	1.8	-0.4	-0.7	0.7
1987	0.5	-2.0	-1.1	0.0	-0.7
1988	-0.5	1.4	0.7	-0.5	0.5
1989	-0.7	-3.6	-2.9	-1.6	-2.3
1990	-2.3	-1.9	-1.9	-1.9	-2.1
1991	-2.6	-3.1	-2.6	-3.1	-2.9
1992	-4.1	-3.4	-2.9	-4.4	-3.7
1993	-2.0	-2.0	-3.3	-3.4	-2.8
1994	-7.5	-6.5	-7.8	-7.2	-7.3
1995	-5.9	-6.4	-3.6	-2.0	-4.2
1996	-0.6	-1.2	-2.6	-2.6	-2.1
1997	-0.6	-0.3	-0.6	-1.2	-0.6
1998	-1.5	-1.5	-0.6	0.3	-0.6
1999	-1.2	0.3	0.6	1.2	0.0
2000	2.8	(NA)	(NA)	(NA)	(NA)

NA Not available.

Quarterly averages are computed by the Hawaii State Department of Business, Economic Development & Tourism from the Hawaii State Department of Labor & Industrial Relations monthly rounded data; Data from 1998 were rebenchmarked by DLIR in April 2000

Source: Hawaii State Department of Labor & Industrial Relations

Table A-8. TRANSPORTATION JOBS

<i>Year</i>	<i>First Quarter</i>	<i>Second Quarter</i>	<i>Third Quarter</i>	<i>Fourth Quarter</i>	<i>Annual</i>
Number of Jobs					
1982	21,250	21,400	21,050	20,950	21,150
1983	20,850	20,850	21,300	21,500	21,100
1984	21,450	21,950	22,300	22,650	22,100
1985	22,800	23,400	23,500	23,850	23,400
1986	24,050	24,400	24,550	25,150	24,550
1987	26,000	26,800	27,250	27,600	26,900
1988	27,450	27,800	27,750	28,100	27,750
1989	29,000	29,700	29,850	30,950	29,900
1990	30,850	31,400	31,950	33,200	31,850
1991	32,750	32,400	32,950	33,250	32,850
1992	32,850	33,050	33,100	32,650	32,900
1993	31,500	31,400	31,250	31,150	31,350
1994	31,850	32,250	31,650	31,750	31,900
1995	30,600	30,750	30,700	30,650	30,700
1996	30,800	30,700	31,050	31,350	31,000
1997	31,350	31,250	31,000	31,100	31,150
1998	30,950	31,100	31,050	30,850	31,000
1999	30,500	31,050	31,000	31,150	30,900
2000	30,950	(NA)	(NA)	(NA)	(NA)
Percentage Change from the Same Period in Previous Year					
1982	-0.2	-2.5	-5.4	-5.0	-3.4
1983	-1.9	-2.6	1.2	2.6	-0.2
1984	2.9	5.3	4.7	5.3	4.7
1985	6.3	6.6	5.4	5.3	5.9
1986	5.5	4.3	4.5	5.5	4.9
1987	8.1	9.8	11.0	9.7	9.6
1988	5.6	3.7	1.8	1.8	3.2
1989	5.6	6.8	7.6	10.1	7.7
1990	6.4	5.7	7.0	7.3	6.5
1991	6.2	3.2	3.1	0.2	3.1
1992	0.3	2.0	0.5	-1.8	0.2
1993	-4.1	-5.0	-5.6	-4.6	-4.7
1994	1.1	2.7	1.3	1.9	1.8
1995	-3.9	-4.7	-3.0	-3.5	-3.8
1996	0.7	-0.2	1.1	2.3	1.0
1997	1.8	1.8	-0.2	-0.8	0.5
1998	-1.3	-0.5	0.2	-0.8	-0.5
1999	-1.5	-0.2	-0.2	1.0	-0.3
2000	1.5	(NA)	(NA)	(NA)	(NA)

NA Not available.

Quarterly averages are computed by the Hawaii State Department of Business, Economic Development & Tourism from the Hawaii State Department of Labor & Industrial Relations monthly rounded data; Data from 1998 were rebenchmarked by DLIR in April 2000

Source: Hawaii State Department of Labor & Industrial Relations

Table A-9. COMMUNICATION JOBS

<i>Year</i>	<i>First Quarter</i>	<i>Second Quarter</i>	<i>Third Quarter</i>	<i>Fourth Quarter</i>	<i>Annual</i>
Number of Jobs					
1982	7,500	7,400	7,500	7,500	7,500
1983	7,550	7,550	7,500	7,500	7,550
1984	7,500	7,550	7,450	7,450	7,500
1985	7,450	7,300	7,350	7,300	7,350
1986	7,050	7,150	7,100	7,150	7,100
1987	7,200	7,300	7,200	7,400	7,250
1988	7,650	7,500	7,500	7,550	7,550
1989	7,300	7,250	7,300	7,350	7,300
1990	7,300	7,400	7,400	7,450	7,400
1991	7,500	7,400	7,300	7,200	7,350
1992	7,000	7,000	6,850	6,850	6,900
1993	6,750	6,450	6,300	6,200	6,400
1994	6,350	6,200	6,200	6,350	6,250
1995	6,150	6,250	6,300	6,300	6,250
1996	6,300	6,350	6,450	6,550	6,400
1997	6,500	6,550	6,600	6,700	6,600
1998	6,850	6,650	6,700	6,800	6,750
1999	6,700	6,750	6,800	6,800	6,750
2000	6,750	(NA)	(NA)	(NA)	(NA)
Percentage Change from the Same Period in Previous Year					
1982	2.0	0.0	0.7	2.0	1.4
1983	0.7	2.0	0.0	0.0	0.7
1984	-0.7	0.0	-0.7	-0.7	-0.7
1985	-0.7	-3.3	-1.3	-2.0	-2.0
1986	-5.4	-2.1	-3.4	-2.1	-3.4
1987	2.1	2.1	1.4	3.5	2.1
1988	6.3	2.7	4.2	2.0	4.1
1989	-4.6	-3.3	-2.7	-2.6	-3.3
1990	0.0	2.1	1.4	1.4	1.4
1991	2.7	0.0	-1.4	-3.4	-0.7
1992	-6.7	-5.4	-6.2	-4.9	-6.1
1993	-3.6	-7.9	-8.0	-9.5	-7.2
1994	-5.9	-3.9	-1.6	2.4	-2.3
1995	-3.1	0.8	1.6	-0.8	0.0
1996	2.4	1.6	2.4	4.0	2.4
1997	3.2	3.1	2.3	2.3	3.1
1998	5.4	1.5	1.5	1.5	2.3
1999	-2.2	1.5	1.5	0.0	0.0
2000	0.7	(NA)	(NA)	(NA)	(NA)

NA Not available.

Quarterly averages are computed by the Hawaii State Department of Business, Economic Development & Tourism from the Hawaii State Department of Labor & Industrial Relations monthly rounded data. Data from 1998 were rebenchmarked by DLIR in April 2000.

Source: Hawaii State Department of Labor & Industrial Relations

Table A-10. UTILITIES JOBS

<i>Year</i>	<i>First Quarter</i>	<i>Second Quarter</i>	<i>Third Quarter</i>	<i>Fourth Quarter</i>	<i>Annual</i>
Number of Jobs					
1982	2,600	2,550	2,550	2,550	2,550
1983	2,450	2,400	2,450	2,450	2,450
1984	2,400	2,400	2,400	2,400	2,400
1985	2,450	2,450	2,500	2,500	2,450
1986	2,450	2,550	2,600	2,650	2,550
1987	2,600	2,650	2,650	2,650	2,650
1988	2,650	2,650	2,700	2,700	2,650
1989	2,700	2,800	2,850	2,850	2,800
1990	2,950	3,050	3,000	2,950	3,000
1991	3,050	3,100	3,150	3,200	3,100
1992	3,350	3,400	3,450	3,500	3,400
1993	3,500	3,550	3,600	3,550	3,550
1994	3,600	3,650	3,650	3,700	3,650
1995	3,700	3,750	3,750	3,800	3,750
1996	3,750	3,750	3,650	3,600	3,700
1997	3,600	3,600	3,550	3,500	3,550
1998	3,500	3,450	3,350	3,350	3,400
1999	3,300	3,250	3,350	3,300	3,300
2000	3,250	(NA)	(NA)	(NA)	(NA)
Percentage Change from the Same Period in Previous Year					
1982	0.0	-1.9	-1.9	-3.8	-1.9
1983	-5.8	-5.9	-3.9	-3.9	-3.9
1984	-2.0	0.0	-2.0	-2.0	-2.0
1985	2.1	2.1	4.2	4.2	2.1
1986	0.0	4.1	4.0	6.0	4.1
1987	6.1	3.9	1.9	0.0	3.9
1988	1.9	0.0	1.9	1.9	0.0
1989	1.9	5.7	5.6	5.6	5.7
1990	9.3	8.9	5.3	3.5	7.1
1991	3.4	1.6	5.0	8.5	3.3
1992	9.8	9.7	9.5	9.4	9.7
1993	4.5	4.4	4.3	1.4	4.4
1994	2.9	2.8	1.4	4.2	2.8
1995	2.8	2.7	2.7	2.7	2.7
1996	1.4	0.0	-2.7	-5.3	-1.3
1997	-4.0	-4.0	-2.7	-2.8	-4.1
1998	-2.8	-4.2	-5.6	-4.3	-4.2
1999	-5.7	-5.8	0.0	-1.5	-2.9
2000	-1.5	(NA)	(NA)	(NA)	(NA)

NA Not available.

Quarterly averages are computed by the Hawaii State Department of Business, Economic Development & Tourism from the Hawaii State Department of Labor & Industrial Relations monthly rounded data. Data from 1998 were rebenchmarked by DLIR in April 2000.

Source: Hawaii State Department of Labor & Industrial Relations

Table A-11. RETAIL TRADE JOBS

<i>Year</i>	<i>First Quarter</i>	<i>Second Quarter</i>	<i>Third Quarter</i>	<i>Fourth Quarter</i>	<i>Annual</i>
Number of Jobs					
1982	86,500	86,350	86,250	86,200	86,300
1983	87,100	86,550	89,450	90,750	88,450
1984	89,750	91,400	92,800	93,600	91,900
1985	95,100	95,850	96,050	97,300	96,100
1986	96,600	96,450	99,350	101,250	98,400
1987	100,800	102,450	103,950	106,350	103,400
1988	104,700	106,850	107,000	108,450	106,750
1989	109,000	110,050	110,550	113,250	110,700
1990	111,950	113,000	113,700	115,250	113,450
1991	113,750	112,500	114,300	114,300	113,700
1992	113,600	113,150	113,700	112,450	113,250
1993	110,000	110,700	111,200	112,400	111,100
1994	110,350	110,050	111,750	114,850	111,750
1995	113,650	113,200	114,500	115,700	114,250
1996	114,350	112,750	113,400	114,800	113,850
1997	113,900	113,200	112,750	113,650	113,350
1998	111,450	110,300	110,850	112,150	111,200
1999	110,050	110,900	112,000	113,750	111,700
2000	112,500	(NA)	(NA)	(NA)	(NA)
Percentage Change from the Same Period in Previous Year					
1982	-0.3	0.3	-0.6	-1.4	-0.5
1983	0.7	0.2	3.7	5.3	2.5
1984	3.0	5.6	3.7	3.1	3.9
1985	6.0	4.9	3.5	4.0	4.6
1986	1.6	0.6	3.4	4.1	2.4
1987	4.3	6.2	4.6	5.0	5.1
1988	3.9	4.3	2.9	2.0	3.2
1989	4.1	3.0	3.3	4.4	3.7
1990	2.7	2.7	2.8	1.8	2.5
1991	1.6	-0.4	0.5	-0.8	0.2
1992	-0.1	0.6	-0.5	-1.6	-0.4
1993	-3.2	-2.2	-2.2	0.0	-1.9
1994	0.3	-0.6	0.5	2.2	0.6
1995	3.0	2.9	2.5	0.7	2.2
1996	0.6	-0.4	-1.0	-0.8	-0.4
1997	-0.4	0.4	-0.6	-1.0	-0.4
1998	-2.2	-2.6	-1.7	-1.3	-1.9
1999	-1.3	0.5	1.0	1.4	0.4
2000	2.2	(NA)	(NA)	(NA)	(NA)

NA Not available.

Quarterly averages are computed by the Hawaii State Department of Business, Economic Development & Tourism from the Hawaii State Department of Labor & Industrial Relations monthly rounded data; Data from 1998 were rebenchmarked by DLIR in April 2000

Source: Hawaii State Department of Labor & Industrial Relations

Table A-12. WHOLESALE TRADE JOBS

<i>Year</i>	<i>First Quarter</i>	<i>Second Quarter</i>	<i>Third Quarter</i>	<i>Fourth Quarter</i>	<i>Annual</i>
Number of Jobs					
1982	18,750	18,750	18,450	18,100	18,500
1983	18,250	18,200	18,450	18,700	18,400
1984	18,700	19,050	19,000	19,100	18,950
1985	19,250	19,550	19,750	19,700	19,550
1986	19,150	19,400	19,700	19,950	19,550
1987	19,950	20,350	20,450	20,700	20,400
1988	20,200	20,550	21,050	21,100	20,750
1989	21,450	21,850	21,950	22,150	21,850
1990	21,950	22,300	22,850	22,950	22,500
1991	22,700	22,600	22,700	22,900	22,750
1992	22,700	22,600	22,400	22,400	22,500
1993	21,950	22,100	21,900	21,800	21,950
1994	21,500	21,550	21,550	21,500	21,550
1995	21,600	21,500	21,500	21,600	21,550
1996	21,500	21,350	21,400	21,250	21,400
1997	20,750	20,900	21,100	21,000	20,950
1998	20,850	21,100	21,050	20,950	21,000
1999	20,750	20,950	21,100	21,250	21,050
2000	21,200	(NA)	(NA)	(NA)	(NA)
Percentage Change from the Same Period in Previous Year					
1982	0.8	0.8	-1.6	-3.7	-1.1
1983	-2.7	-2.9	0.0	3.3	-0.5
1984	2.5	4.7	3.0	2.1	3.0
1985	2.9	2.6	3.9	3.1	3.2
1986	-0.5	-0.8	-0.3	1.3	0.0
1987	4.2	4.9	3.8	3.8	4.3
1988	1.3	1.0	2.9	1.9	1.7
1989	6.2	6.3	4.3	5.0	5.3
1990	2.3	2.1	4.1	3.6	3.0
1991	3.4	1.3	-0.7	-0.2	1.1
1992	0.0	0.0	-1.3	-2.2	-1.1
1993	-3.3	-2.2	-2.2	-2.7	-2.4
1994	-2.1	-2.5	-1.6	-1.4	-1.8
1995	0.5	-0.2	-0.2	0.5	0.0
1996	-0.5	-0.7	-0.5	-1.6	-0.7
1997	-3.5	-2.1	-1.4	-1.2	-2.1
1998	0.5	1.0	-0.2	-0.2	0.2
1999	-0.5	-0.7	0.2	1.4	0.2
2000	2.2	(NA)	(NA)	(NA)	(NA)

NA Not available.

Quarterly averages are computed by the Hawaii State Department of Business, Economic Development & Tourism from the Hawaii State Department of Labor & Industrial Relations monthly rounded data; Data from 1998 were rebenchmarked by DLIR in April 2000

Source: Hawaii State Department of Labor & Industrial Relations

Table A-13. FINANCE, INSURANCE AND REAL ESTATE JOBS

<i>Year</i>	<i>First Quarter</i>	<i>Second Quarter</i>	<i>Third Quarter</i>	<i>Fourth Quarter</i>	<i>Annual</i>
Number of Jobs					
1982	31,950	31,650	31,300	31,200	31,500
1983	31,650	31,700	32,200	32,000	31,900
1984	31,950	31,950	31,850	31,700	31,850
1985	31,500	31,900	32,050	32,200	31,900
1986	32,600	32,750	33,450	33,850	33,150
1987	33,500	33,750	33,800	33,800	33,700
1988	34,000	34,300	34,650	34,850	34,450
1989	34,650	34,950	35,200	36,200	35,250
1990	35,900	36,800	37,250	37,300	36,800
1991	37,250	37,250	37,500	37,500	37,400
1992	37,150	37,750	38,250	38,550	37,950
1993	38,300	38,800	39,500	39,200	38,950
1994	38,700	38,550	38,500	37,900	38,400
1995	37,200	37,000	37,250	37,100	37,150
1996	36,950	36,850	37,050	36,750	36,900
1997	36,300	36,150	36,150	36,000	36,150
1998	35,250	35,600	35,750	35,350	35,500
1999	35,050	35,000	35,150	34,650	34,950
2000	34,400	(NA)	(NA)	(NA)	(NA)
Percentage Change from the Same Period in Previous Year					
1982	0.8	-0.2	-1.9	-1.0	-0.6
1983	-0.9	0.2	2.9	2.6	1.3
1984	0.9	0.8	-1.1	-0.9	-0.2
1985	-1.4	-0.2	0.6	1.6	0.2
1986	3.5	2.7	4.4	5.1	3.9
1987	2.8	3.1	1.0	-0.1	1.7
1988	1.5	1.6	2.5	3.1	2.2
1989	1.9	1.9	1.6	3.9	2.3
1990	3.6	5.3	5.8	3.0	4.4
1991	3.8	1.2	0.7	0.5	1.6
1992	-0.3	1.3	2.0	2.8	1.5
1993	3.1	2.8	3.3	1.7	2.6
1994	1.0	-0.6	-2.5	-3.3	-1.4
1995	-3.9	-4.0	-3.2	-2.1	-3.3
1996	-0.7	-0.4	-0.5	-0.9	-0.7
1998	-1.8	-1.9	-2.4	-2.0	-2.0
1999	-2.9	-1.5	-1.1	-1.8	-1.8
2000	-0.6	(NA)	(NA)	(NA)	(NA)

NA Not available.

Quarterly averages are computed by the Hawaii State Department of Business, Economic Development & Tourism from the Hawaii State Department of Labor & Industrial Relations monthly rounded data. Data from 1998 were rebenchmarked by DLIR in April 2000

Source: Hawaii State Department of Labor & Industrial Relations

Table A-14. SERVICES AND MISCELLANEOUS JOBS

<i>Year</i>	<i>First Quarter</i>	<i>Second Quarter</i>	<i>Third Quarter</i>	<i>Fourth Quarter</i>	<i>Annual</i>
Number of Jobs					
1982	102,050	100,950	100,450	101,450	101,200
1983	103,950	103,800	105,650	106,350	104,950
1984	107,550	108,700	107,100	108,500	107,950
1985	110,650	110,500	113,750	115,650	112,650
1986	117,350	118,400	118,800	120,400	118,750
1987	123,600	125,150	126,750	130,550	126,500
1988	130,800	131,350	133,600	137,250	133,250
1989	141,450	143,450	146,650	150,050	145,400
1990	152,400	153,300	154,900	156,950	154,400
1991	157,400	157,100	160,150	161,750	159,100
1992	162,900	163,100	164,850	163,400	163,550
1993	163,100	163,150	161,900	162,100	162,550
1994	162,600	163,400	164,250	165,250	163,900
1995	165,050	164,600	164,100	164,350	164,500
1996	165,350	165,650	167,150	168,550	166,650
1997	168,650	168,700	169,750	169,700	169,200
1998	170,200	172,300	172,600	173,700	172,200
1999	171,950	174,600	174,800	175,650	174,250
2000	175,450	(NA)	(NA)	(NA)	(NA)
Percentage Change from the Same Period in Previous Year					
1982	-1.2	-1.8	-0.1	0.4	-0.7
1983	1.9	2.8	5.2	4.8	3.7
1984	3.5	4.7	1.4	2.0	2.9
1985	2.9	1.7	6.2	6.6	4.4
1986	6.1	7.1	4.4	4.1	5.4
1987	5.3	5.7	6.7	8.4	6.5
1988	5.8	5.0	5.4	5.1	5.3
1989	8.1	9.2	9.8	9.3	9.1
1990	7.7	6.9	5.6	4.6	6.2
1991	3.3	2.5	3.4	3.1	3.0
1992	3.5	3.8	2.9	1.0	2.8
1993	0.1	0.0	-1.8	-0.8	-0.6
1994	-0.3	0.2	1.5	1.9	0.8
1995	1.5	0.7	-0.1	-0.5	0.4
1996	0.2	0.6	1.9	2.6	1.3
1997	2.0	1.8	1.6	0.7	1.5
1998	0.9	2.1	1.7	2.4	1.8
1999	1.0	1.3	1.3	1.1	1.2
2000	2.0	(NA)	(NA)	(NA)	(NA)

NA Not available.

Quarterly averages are computed by the Hawaii State Department of Business, Economic Development & Tourism from the Hawaii State Department of Labor & Industrial Relations monthly rounded data; Data from 1998 were rebenchmarked by DLIR in April 2000

Source: Hawaii State Department of Labor & Industrial Relations

Table A-15. HOTEL JOBS

<i>Year</i>	<i>First Quarter</i>	<i>Second Quarter</i>	<i>Third Quarter</i>	<i>Fourth Quarter</i>	<i>Annual</i>
Number of Jobs					
1982	26,700	26,650	26,300	26,400	26,500
1983	26,600	27,000	27,150	27,300	27,000
1984	28,250	28,450	27,900	28,500	28,250
1985	29,400	28,850	28,750	28,900	29,000
1986	29,100	29,150	29,550	29,150	29,250
1987	30,500	30,500	31,200	32,800	31,250
1988	33,650	33,550	34,350	35,750	34,350
1989	36,850	36,650	37,100	37,500	37,000
1990	37,550	38,450	38,800	40,200	38,750
1991	40,500	39,800	41,300	41,550	40,800
1992	41,500	41,350	40,800	40,250	40,950
1993	38,650	38,100	37,650	37,550	38,000
1994	37,700	37,850	38,100	38,350	38,000
1995	38,150	37,500	37,650	37,700	37,750
1996	38,200	37,950	38,550	38,650	38,350
1997	39,100	38,000	38,100	38,150	38,350
1998	38,400	37,850	37,450	37,300	37,750
1999	37,300	37,100	36,900	37,150	37,100
2000	37,600	(NA)	(NA)	(NA)	(NA)
Percentage Change from the Same Period in Previous Year					
1982	7.0	8.6	6.7	5.4	6.9
1983	-0.4	1.3	3.2	3.4	1.9
1984	6.2	5.4	2.8	4.4	4.6
1985	4.1	1.4	3.0	1.4	2.7
1986	-1.0	1.0	2.8	0.9	0.9
1987	4.8	4.6	5.6	12.5	6.8
1988	10.3	10.0	10.1	9.0	9.9
1989	9.5	9.2	8.0	4.9	7.7
1990	1.9	4.9	4.6	7.2	4.7
1991	7.9	3.5	6.4	3.4	5.3
1992	2.5	3.9	-1.2	-3.1	0.4
1993	-6.9	-7.9	-7.7	-6.7	-7.2
1994	-2.5	-0.7	1.2	2.1	0.0
1995	1.2	-0.9	-1.2	-1.7	-0.7
1996	0.1	1.2	2.4	2.5	1.6
1997	2.4	0.1	-1.2	-1.3	0.0
1998	-1.8	-0.4	-1.7	-2.2	-1.6
1999	-2.9	-2.0	-1.5	-0.4	-1.7
2000	0.8	(NA)	(NA)	(NA)	(NA)

NA Not available.

Quarterly averages are computed by the Hawaii State Department of Business, Economic Development & Tourism from the Hawaii State Department of Labor & Industrial Relations monthly rounded data; Data from 1998 were rebenchmarked by DLIR in April 2000

Source: Hawaii State Department of Labor & Industrial Relations

Table A-16. FEDERAL GOVERNMENT JOBS

<i>Year</i>	<i>First Quarter</i>	<i>Second Quarter</i>	<i>Third Quarter</i>	<i>Fourth Quarter</i>	<i>Annual</i>
Number of Jobs					
1982	30,850	31,550	31,650	32,050	31,500
1983	32,050	32,250	32,100	32,050	32,100
1984	31,750	31,950	32,200	32,550	32,100
1985	32,300	32,350	32,400	32,500	32,400
1986	32,100	32,000	32,000	32,250	32,100
1987	32,050	32,700	32,950	33,400	32,800
1988	33,750	33,700	33,750	34,100	33,800
1989	33,850	33,950	33,950	34,200	34,000
1990	33,850	34,950	34,050	33,700	34,150
1991	33,400	33,500	34,450	34,100	33,850
1992	33,650	33,500	33,050	32,850	33,250
1993	31,800	32,000	31,900	31,650	31,800
1994	31,350	31,550	31,250	30,950	31,250
1995	31,000	31,200	31,150	30,850	31,050
1996	31,300	30,800	31,550	30,850	31,100
1997	30,550	30,750	30,750	30,650	30,650
1998	30,350	30,400	30,400	30,450	30,400
1999	30,100	30,250	30,500	30,500	30,350
2000	30,500	(NA)	(NA)	(NA)	(NA)
Percentage Change from the Same Period in Previous Year					
1982	3.4	4.6	3.8	3.6	3.8
1983	3.9	2.2	1.4	0.0	1.9
1984	-0.9	-0.9	0.3	1.6	0.0
1985	1.7	1.3	0.6	-0.2	0.9
1986	-0.6	-1.1	-1.2	-0.8	-0.9
1987	-0.2	2.2	3.0	3.6	2.2
1988	5.3	3.1	2.4	2.1	3.0
1989	0.3	0.7	0.6	0.3	0.6
1990	0.0	2.9	0.3	-1.5	0.4
1991	-1.3	-4.1	1.2	1.2	-0.9
1992	0.7	0.0	-4.1	-3.7	-1.8
1993	-5.5	-4.5	-3.5	-3.7	-4.4
1994	-1.4	-1.4	-2.0	-2.2	-1.7
1995	-1.1	-1.1	-0.3	-0.3	-0.6
1996	1.0	-1.3	1.3	0.0	0.2
1997	-2.4	-0.2	-2.5	-0.6	-1.4
1998	-0.7	-1.1	-1.1	-0.7	-0.8
1999	-0.8	-0.5	0.3	0.2	-0.2
2000	1.3	(NA)	(NA)	(NA)	(NA)

NA Not available.

Quarterly averages are computed by the Hawaii State Department of Business, Economic Development & Tourism from the Hawaii State Department of Labor & Industrial Relations monthly rounded data; Data from 1998 were rebenchmarked by DLIR in April 2000

Source: Hawaii State Department of Labor & Industrial Relations

Table A-17. STATE GOVERNMENT JOBS

<i>Year</i>	<i>First Quarter</i>	<i>Second Quarter</i>	<i>Third Quarter</i>	<i>Fourth Quarter</i>	<i>Annual</i>
Number of Jobs					
1982	46,450	47,300	41,800	47,000	45,650
1983	47,150	47,550	41,450	47,350	45,900
1984	47,800	48,250	42,300	47,800	46,550
1985	48,500	48,850	43,350	48,900	47,400
1986	49,750	50,150	44,550	50,000	48,600
1987	50,950	51,700	45,450	51,400	49,900
1988	52,400	53,500	47,750	53,750	51,850
1989	54,300	55,300	49,000	55,650	53,550
1990	56,900	59,900	51,300	60,150	57,050
1991	61,800	62,850	53,450	63,000	60,250
1992	64,350	65,650	55,550	64,750	62,600
1993	66,050	68,050	56,800	66,100	64,250
1994	66,500	68,150	58,050	67,250	65,000
1995	67,550	68,650	55,800	63,750	63,950
1996	64,300	66,850	55,850	64,300	62,800
1997	65,850	67,350	58,000	65,800	64,250
1998	66,450	67,750	59,350	66,200	64,950
1999	66,350	67,900	61,050	67,900	65,800
2000	67,500	(NA)	(NA)	(NA)	(NA)
Percentage Change from the Same Period in Previous Year					
1982	-0.3	0.5	1.7	1.5	0.9
1983	1.5	0.5	-0.8	0.7	0.5
1984	1.4	1.5	2.1	1.0	1.4
1985	1.5	1.2	2.5	2.3	1.8
1986	2.6	2.7	2.8	2.2	2.5
1987	2.4	3.1	2.0	2.8	2.7
1988	2.8	3.5	5.1	4.6	3.9
1989	3.6	3.4	2.6	3.5	3.3
1990	4.8	8.3	4.7	8.1	6.5
1991	8.6	4.9	4.2	4.7	5.6
1992	4.1	4.5	3.9	2.8	3.9
1993	2.6	3.7	2.3	2.1	2.6
1994	0.7	0.1	2.2	1.7	1.2
1995	1.6	0.7	-3.9	-5.2	-1.6
1996	-4.8	-2.6	0.1	0.9	-1.8
1997	2.4	0.7	3.8	2.3	2.3
1998	0.9	0.6	2.3	0.6	1.1
1999	-0.2	0.2	2.9	2.6	1.3
2000	1.7	(NA)	(NA)	(NA)	(NA)

NA Not available.

Quarterly averages are computed by the Hawaii State Department of Business, Economic Development & Tourism from the Hawaii State Department of Labor & Industrial Relations monthly rounded data; Data from 1998 were rebenchmarked by DLIR in April 2000

Source: Hawaii State Department of Labor & Industrial Relations

Table A-18. LOCAL GOVERNMENT JOBS

<i>Year</i>	<i>First Quarter</i>	<i>Second Quarter</i>	<i>Third Quarter</i>	<i>Fourth Quarter</i>	<i>Annual</i>
Number of Jobs					
1982	12,250	12,550	15,200	12,650	13,150
1983	12,450	12,550	15,500	12,600	13,300
1984	12,550	12,650	14,700	12,850	13,200
1985	12,700	12,650	16,000	12,700	13,500
1986	12,550	12,650	14,400	12,900	13,150
1987	12,800	13,000	14,450	13,400	13,400
1988	13,400	13,550	14,750	13,700	13,850
1989	13,600	13,800	15,050	13,850	14,100
1990	13,900	14,050	15,250	14,350	14,400
1991	14,350	14,500	15,550	14,700	14,750
1992	14,700	14,850	16,150	15,350	15,250
1993	15,200	15,250	16,200	15,450	15,500
1994	15,350	15,400	16,300	15,400	15,600
1995	16,250	16,250	17,050	16,200	16,450
1996	16,300	16,350	17,450	16,450	16,600
1997	16,400	16,450	17,750	16,500	16,750
1998	16,450	16,600	17,950	16,500	16,850
1999	16,350	16,400	17,500	16,400	16,650
2000	16,350	(NA)	(NA)	(NA)	(NA)
Percentage Change from the Same Period in Previous Year					
1982	-4.7	0.0	-2.6	2.0	-1.5
1983	1.6	0.0	2.0	-0.4	1.1
1984	0.8	0.8	-5.2	2.0	-0.8
1985	1.2	0.0	8.8	-1.2	2.3
1986	-1.2	0.0	-10.0	1.6	-2.6
1987	2.0	2.8	0.3	3.9	1.9
1988	4.7	4.2	2.1	2.2	3.4
1989	1.5	1.8	2.0	1.1	1.8
1990	2.2	1.8	1.3	3.6	2.1
1991	3.2	3.2	2.0	2.4	2.4
1992	2.4	2.4	3.9	4.4	3.4
1993	3.4	2.7	0.3	0.7	1.6
1994	1.0	1.0	0.6	-0.3	0.6
1995	5.9	5.5	4.6	5.2	5.4
1996	0.3	0.6	2.3	1.5	0.9
1997	0.6	0.6	1.7	0.3	0.9
1998	0.3	0.9	1.1	0.0	0.6
1999	-0.6	-1.2	-2.5	-0.6	-1.2
2000	0.0	(NA)	(NA)	(NA)	(NA)

NA Not available.

Quarterly averages are computed by the Hawaii State Department of Business, Economic Development & Tourism from the Hawaii State Department of Labor & Industrial Relations monthly rounded data; Data from 1998 were rebenchmarked by DLIR in April 2000

Source: Hawaii State Department of Labor & Industrial Relations

Table A-19. AGRICULTURE WAGE AND SALARY JOBS

<i>Year</i>	<i>First Quarter</i>	<i>Second Quarter</i>	<i>Third Quarter</i>	<i>Fourth Quarter</i>	<i>Annual</i>
Number of Jobs					
1982	9,850	11,400	12,500	11,350	11,300
1983	9,900	11,300	12,300	11,200	11,200
1984	9,650	11,050	11,950	10,600	10,800
1985	9,800	10,500	11,250	10,150	10,400
1986	9,850	9,950	10,800	10,000	10,150
1987	10,000	10,500	11,300	10,350	10,550
1988	9,750	9,700	10,500	9,950	10,000
1989	9,250	9,700	10,150	9,450	9,650
1990	8,850	9,350	10,400	9,550	9,550
1991	8,800	9,350	10,150	9,900	9,550
1992	9,200	9,350	9,650	9,000	9,300
1993	8,750	8,350	8,800	8,350	8,550
1994	8,000	8,000	8,450	7,550	8,000
1995	7,100	6,950	7,350	7,750	7,300
1996	7,200	7,200	7,550	7,600	7,400
1997	6,800	6,800	7,500	7,700	7,200
1998	7,200	7,400	7,950	7,700	7,550
1999	7,050	7,250	8,150	8,350	7,650
2000	7,850	(NA)	(NA)	(NA)	(NA)
Percentage Change from the Same Period in Previous Year					
1982	-1.0	-5.0	-2.0	0.4	-2.2
1983	0.5	-0.9	-1.6	-1.3	-0.9
1984	-2.5	-2.2	-2.8	-5.4	-3.6
1985	1.6	-5.0	-5.9	-4.2	-3.7
1986	0.5	-5.2	-4.0	-1.5	-2.4
1987	1.5	5.5	4.6	3.5	3.9
1988	-2.5	-7.6	-7.1	-3.9	-5.2
1989	-5.1	0.0	-3.3	-5.0	-3.5
1990	-4.3	-3.6	2.5	1.1	-1.0
1991	-0.6	0.0	-2.4	3.7	0.0
1992	4.5	0.0	-4.9	-9.1	-2.6
1993	-4.9	-10.7	-8.8	-7.2	-8.1
1994	-8.6	-4.2	-4.0	-9.6	-6.4
1995	-11.3	-13.1	-13.0	2.6	-8.8
1996	1.4	3.6	2.7	-1.9	1.4
1997	-5.6	-5.6	-0.7	1.3	-2.7
1998	5.9	8.8	6.0	0.0	4.9
1999	-2.1	-2.0	2.5	8.4	1.3
2000	11.3	(NA)	(NA)	(NA)	(NA)

NA Not available.

Quarterly averages are computed by the Hawaii State Department of Business, Economic Development & Tourism from the Hawaii State Department of Labor & Industrial Relations monthly rounded data; Data from 1998 were rebenchmarked by DLIR in April 2000

Source: Hawaii State Department of Labor & Industrial Relations

Table A-20. INITIAL AGENT CLAIMS FOR UNEMPLOYMENT

<i>Year</i>	<i>First Quarter</i>	<i>Second Quarter</i>	<i>Third Quarter</i>	<i>Fourth Quarter</i>	<i>Annual</i>
Number of Claims					
1982	1,176	1,027	1,366	1,324	4,893
1983	1,413	1,136	1,058	1,094	4,701
1984	1,046	933	1,097	1,178	4,254
1985	1,018	857	1,050	1,115	4,040
1986	1,031	914	1,061	977	3,983
1987	897	700	933	817	3,347
1988	924	645	852	740	3,161
1989	692	659	718	814	2,883
1990	819	670	756	847	3,092
1991	839	723	1,047	994	3,603
1992	1,195	1,104	1,305	1,304	4,908
1993	1,205	1,135	1,199	1,225	4,764
1994	1,105	998	1,253	1,137	4,493
1995	1,054	1,013	1,082	1,095	4,244
1996	1,057	837	957	654	3,505
1997	589	524	587	475	2,175
1998	419	400	436	330	1,585
1999	328	272	304	243	1,147
2000	232	(NA)	(NA)	(NA)	(NA)
Percentage Change from the Same Period in Previous Year					
1982	-3.4	2.4	11.5	30.8	9.8
1983	20.2	10.6	-22.5	-17.4	-3.9
1984	-26.0	-17.9	3.7	7.7	-9.5
1985	-2.7	-8.1	-4.3	-5.3	-5.0
1986	1.3	6.7	1.0	-12.4	-1.4
1987	-13.0	-23.4	-12.1	-16.4	-16.0
1988	3.0	-7.9	-8.7	-9.4	-5.6
1989	-25.1	2.2	-15.7	10.0	-8.8
1990	18.4	1.7	5.3	4.1	7.2
1991	2.4	7.9	38.5	17.4	16.5
1992	42.4	52.7	24.6	31.2	36.2
1993	0.8	2.8	-8.1	-6.1	-2.9
1994	-8.3	-12.1	4.5	-7.2	-5.7
1995	-4.6	1.5	-13.6	-3.7	-5.5
1996	0.3	-17.4	-11.6	-40.3	-17.4
1997	-44.3	-37.4	-38.7	-27.4	-37.9
1998	-28.9	-23.7	-25.7	-30.5	-27.1
1999	-21.7	-32.0	-30.3	-26.4	-27.6
2000	-29.3	(NA)	(NA)	(NA)	(NA)

NA Not available.

Source: Hawaii State Department of Labor and Industrial Relations, Unemployment Insurance Research Section.

Table A-21. INITIAL LIABLE CLAIMS FOR UNEMPLOYMENT

<i>Year</i>	<i>First Quarter</i>	<i>Second Quarter</i>	<i>Third Quarter</i>	<i>Fourth Quarter</i>	<i>Annual</i>
Number of Claims					
1982	1,375	1,258	1,657	1,504	5,794
1983	1,235	1,095	1,396	1,120	4,846
1984	1,111	1,003	1,338	1,122	4,574
1985	1,182	1,045	1,350	968	4,545
1986	863	1,046	1,271	1,027	4,207
1987	1,022	1,011	1,230	1,075	4,338
1988	1,177	1,083	1,249	1,057	4,566
1989	1,046	1,011	1,233	1,193	4,483
1990	1,324	1,298	1,677	1,590	5,889
1991	1,680	1,731	2,248	2,229	7,888
1992	2,447	2,518	3,113	2,812	10,890
1993	2,673	2,595	3,054	2,728	11,050
1994	2,748	2,492	3,378	3,039	11,657
1995	2,977	2,824	3,288	2,760	11,849
1996	2,454	2,486	2,787	2,335	10,062
1997	2,178	2,157	2,423	1,321	8,079
1998	1,200	1,063	1,470	1,085	4,818
1999	1,022	916	1,084	828	3,850
2000	770	(NA)	(NA)	(NA)	(NA)
Percentage Change from the Same Period in Previous Year					
1982	-12.0	-9.9	-6.3	5.8	-5.8
1983	-10.2	-13.0	-15.8	-25.5	-16.4
1984	-10.0	-8.4	-4.2	0.2	-5.6
1985	6.4	4.2	0.9	-13.7	-0.6
1986	-27.0	0.1	-5.9	6.1	-7.4
1987	18.4	-3.3	-3.2	4.7	3.1
1988	15.2	7.1	1.5	-1.7	5.3
1989	-11.1	-6.6	-1.3	12.9	-1.8
1990	26.6	28.4	36.0	33.3	31.4
1991	26.9	33.4	34.0	40.2	33.9
1992	45.7	45.5	38.5	26.2	38.1
1993	9.2	3.1	-1.9	-3.0	1.5
1994	2.8	-4.0	10.6	11.4	5.5
1995	8.3	13.3	-2.7	-9.2	1.6
1996	-17.6	-12.0	-15.2	-15.4	-15.1
1997	-11.2	-13.2	-13.1	-43.4	-19.7
1998	-44.9	-50.7	-39.3	-17.9	-40.4
2000	-14.8	(NA)	(NA)	(NA)	(NA)

NA Not available.

Source: Hawaii State Department of Labor and Industrial Relations, Unemployment Insurance Research

B. INCOME AND PRICES

Hawaii's personal income accelerated in the second half of 1999 according to recently released data from the U.S. Bureau of Economic Analysis (BEA). The income gains were led by increases in wages and salaries and proprietors' income.

BEA's estimates for the fourth quarter accompanied a comprehensive revision of state personal income data from 1969 through 1999. Methodological changes in treatment of government and uninsured private pensions generally raised personal income estimates for all states. In Hawaii, the changes also affected the pattern of growth in recent years.

According to BEA's estimates, Hawaii's personal income grew by 4.1 percent from the fourth quarter of 1998 to the fourth quarter of 1999 (Table B-2). This followed strong growth in the third quarter of 4.8 percent. Year-over-year, Hawaii's personal income was 3.6 percent higher in 1999 than in 1998.

Accounting for size of the components, by far the largest contributor to this growth, was wages and salaries. The wage and salary component grew 4.7 percent in the fourth quarter of 1999 compared to the year-earlier quarter (Table B-3). For 1999 overall, wage and salary growth was 4.0 percent. This was the fastest rate of annual increase since 1992.

Proprietors' income grew by 6.0 percent in the fourth quarter (Table B-5). Proprietors' income has grown relatively rapidly for the last few years (although BEA's recent revisions significantly lowered the 1998 growth rates and raised the 1997 growth rates). We have interpreted this as consistent with other evidence that self-employment has risen in Hawaii in recent years.

Earnings expanded in almost all sectors of the economy during the fourth quarter (Table B-1). Adjusting for size, the largest sources of private earnings growth came from services, retail trade, and wholesale trade.

Earnings in the public sector also expanded in the fourth quarter, with a particularly large increase in the state and local component. This likely reflected retroactive pay increases under an arbitration award.

Inflation remains relatively low in Hawaii according to the Honolulu Consumer Price Index. For 1999, the rate of inflation was 1.0 percent (Table B-9). However, the CPI for the second half of 1999 was up by 1.6 percent relative to the second half of 1998, suggesting that inflation is accelerating.

Table B-1. PERSONAL INCOME FOR HAWAII BY MAJOR SOURCES

[In Millions of Dollars at Seasonally Adjusted Annual Rates]

Series	Fourth Quarter 1998	Annual average 1998	Third Quarter 1999	Fourth Quarter 1999	Annual average 1999	Percent Change		
						To Fourth Quarter 1999 from		Annual average
						Third Quarter 1999	Fourth Quarter 1998	1999 from 1998
PERSONAL INCOME	32,186	31,856	33,398	33,520	33,006	0.4	4.1	3.6
Earnings By Place of Work	22,294	22,043	23,305	23,333	22,930	0.1	4.7	4.0
Wage and salary disbursements	17,945	17,743	18,763	18,783	18,450	0.1	4.7	4.0
Other labor income	3,107	3,090	3,243	3,208	3,179	-1.1	3.3	2.9
Proprietors' income	2,515	2,477	2,626	2,667	2,610	1.6	6.0	5.4
Farm proprietors' income	2	1	8	7	9	-12.5	250.0	620.0
Nonfarm proprietors' income	2,513	2,475	2,619	2,659	2,601	1.5	5.8	5.1
Dividends, interest, and rent	6,083	6,019	6,167	6,227	6,162	1.0	2.4	2.4
Transfer payments	3,810	3,794	3,926	3,959	3,914	0.8	3.9	3.2
Less: Pers. cont. for social insur.	1,274	1,266	1,327	1,324	1,308	-0.2	3.9	3.3
Earnings By Industry	22,294	22,043	23,305	23,333	22,930	0.1	4.7	4.0
Farm Earnings	169	164	179	180	179	0.6	6.5	9.1
Nonfarm Earnings	23,399	23,145	24,454	24,477	24,059	0.1	4.6	3.9
Private Earnings	16,285	16,035	16,580	16,809	16,526	1.4	3.2	3.1
Ag. serv., forestry, fishing & oth	141	137	154	156	148	1.3	10.6	8.0
Mining	18	19	18	18	18	0.0	0.0	-6.7
Construction	1,304	1,325	1,272	1,285	1,281	1.0	-1.5	-3.3
Manufacturing	714	717	742	739	740	-0.4	3.5	3.2
Transport. and public utilities	1,834	1,816	1,796	1,812	1,810	0.9	-1.2	-0.3
Wholesale trade	810	808	855	875	848	2.3	8.0	4.9
Retail trade	2,530	2,527	2,645	2,673	2,620	1.1	5.7	3.7
Finance, insur., and real estate	2,053	1,991	2,103	2,117	2,096	0.7	3.1	5.3
Services	6,881	6,695	6,995	7,134	6,966	2.0	3.7	4.1
Gov't and gov't enterprises	7,114	7,110	7,873	7,668	7,532	-2.6	7.8	5.9
Federal, civilian	1,808	1,787	1,890	1,889	1,878	-0.1	4.5	5.1
Military	2,277	2,300	2,286	2,246	2,273	-1.7	-1.4	-1.2
State and local	3,028	3,023	3,697	3,533	3,381	-4.4	16.7	11.9

BEA data for 1969 Q1 through 1999 Q3 have been revised. See <<http://www.bea.doc.gov/bea/regional/spi/index.html>>

Source: U.S. Department of Commerce, Bureau of Economic Analysis, Regional Data: May 17, 2000,

<<http://www.bea.doc.gov/bea/regional/sq/sq5prn.exe>>, <<http://www.bea.doc.gov/bea/newsrel/spi0500.html>>,

<http://www.bea.doc.gov/bea/ARTICLES/REGIONAL/PERSINC/2000/0600spi.pdf>

and tabulations by the Hawaii State Department of Business, Economic Development & Tourism.

Table B-2. PERSONAL INCOME

<i>Year</i>	<i>First Quarter</i>	<i>Second Quarter</i>	<i>Third Quarter</i>	<i>Fourth Quarter</i>	<i>Annual Average</i>
In Millions of Dollars at Seasonally Adjusted Annual Rates					
1982	12,380	12,763	13,092	13,150	12,846
1983	13,836	13,921	13,980	14,487	14,056
1984	14,746	15,261	15,572	15,734	15,328
1985	16,080	16,212	16,348	16,624	16,316
1986	16,912	17,098	17,380	17,646	17,259
1987	17,998	18,328	18,755	19,214	18,574
1988	19,799	20,135	20,530	21,131	20,399
1989	21,774	22,263	22,675	23,220	22,483
1990	23,950	24,585	25,250	25,874	24,915
1991	25,871	26,002	26,250	26,668	26,198
1992	27,717	28,150	26,541	29,028	27,859
1993	28,924	29,213	29,010	29,124	29,068
1994	29,295	29,553	29,880	30,233	29,740
1995	30,078	30,266	30,196	30,267	30,202
1996	30,254	30,310	30,474	30,535	30,393
1997	30,938	31,171	31,558	31,447	31,279
1998	31,676	31,693	31,870	32,186	31,856
1999	32,404	32,702	33,398	33,520	33,006
Percentage Change from the Same Period in Previous Year					
1982	4.4	9.0	6.6	6.8	6.7
1983	11.8	9.1	6.8	10.2	9.4
1984	6.6	9.6	11.4	8.6	9.1
1985	9.0	6.2	5.0	5.7	6.4
1986	5.2	5.5	6.3	6.1	5.8
1987	6.4	7.2	7.9	8.9	7.6
1988	10.0	9.9	9.5	10.0	9.8
1989	10.0	10.6	10.4	9.9	10.2
1990	10.0	10.4	11.4	11.4	10.8
1991	8.0	5.8	4.0	3.1	5.1
1992	7.1	8.3	1.1	8.8	6.3
1993	4.4	3.8	9.3	0.3	4.3
1994	1.3	1.2	3.0	3.8	2.3
1995	2.7	2.4	1.1	0.1	1.6
1996	0.6	0.1	0.9	0.9	0.6
1997	2.3	2.8	3.6	3.0	2.9
1998	2.4	1.7	1.0	2.3	1.8
1999	2.3	3.2	4.8	4.1	3.6

BEA data for 1969 Q1 through 1999 Q3 have been revised. See <<http://www.bea.doc.gov/bea/regional/spi/index>>
 Source: U.S. Department of Commerce, Bureau of Economic Analysis, Regional Data: May 17, 2000,
 <<http://www.bea.doc.gov/bea/regional/sq/sq5prm.exe>>, <<http://www.bea.doc.gov/bea/newsrel/spi0500.html>>,
<http://www.bea.doc.gov/bea/ARTICLES/REGIONAL/PERSINC/2000/0600spi.pdf>
 and tabulations by the Hawaii State Department of Business, Economic Development & Tourism

Table B-3. TOTAL WAGES AND SALARIES

Year	First Quarter	Second Quarter	Third Quarter	Fourth Quarter	Annual Average
In Millions of Dollars at Seasonally Adjusted Annual Rates					
1982	7,296	7,534	7,753	7,911	7,624
1983	8,027	8,071	8,047	8,297	8,111
1984	8,397	8,641	8,698	8,772	8,627
1985	8,986	9,123	9,274	9,456	9,210
1986	9,551	9,669	9,883	10,160	9,816
1987	10,360	10,601	10,849	11,140	10,738
1988	11,424	11,704	11,923	12,273	11,831
1989	12,568	12,903	13,237	13,602	13,078
1990	13,914	14,310	14,662	15,077	14,491
1991	15,174	15,233	15,421	15,671	15,375
1992	16,114	16,311	16,370	16,750	16,386
1993	16,552	16,810	16,558	16,573	16,623
1994	16,669	16,708	16,788	16,928	16,773
1995	16,790	16,893	16,792	16,767	16,811
1996	16,776	16,811	16,920	16,918	16,856
1997	17,150	17,282	17,569	17,446	17,362
1998	17,667	17,629	17,731	17,945	17,743
1999	18,025	18,229	18,763	18,783	18,450
Percentage Change from the Same Period in Previous Year					
1982	1.6	6.8	6.5	8.7	5.9
1983	10.0	7.1	3.8	4.9	6.4
1984	4.6	7.1	8.1	5.7	6.4
1985	7.0	5.6	6.6	7.8	6.8
1986	6.3	6.0	6.6	7.4	6.6
1987	8.5	9.6	9.8	9.6	9.4
1988	10.3	10.4	9.9	10.2	10.2
1989	10.0	10.2	11.0	10.8	10.5
1990	10.7	10.9	10.8	10.8	10.8
1991	9.1	6.5	5.2	3.9	6.1
1992	6.2	7.1	6.2	6.9	6.6
1993	2.7	3.1	1.1	-1.1	1.4
1994	0.7	-0.6	1.4	2.1	0.9
1995	0.7	1.1	0.0	-1.0	0.2
1996	-0.1	-0.5	0.8	0.9	0.3
1997	2.2	2.8	3.8	3.1	3.0
1998	3.0	2.0	0.9	2.9	2.2
1999	2.0	3.4	5.8	4.7	4.0

BEA data for 1969 Q1 through 1999 Q3 have been revised. See <<http://www.bea.doc.gov/bea/regional/spi/index>>
 Source: U.S. Department of Commerce, Bureau of Economic Analysis, Regional Data: May 17, 2000
 <<http://www.bea.doc.gov/bea/regional/sq/sq5prn.exe>>, <<http://www.bea.doc.gov/bea/newsrel/spi0500.html>>,
<http://www.bea.doc.gov/bea/ARTICLES/REGIONAL/PERSINC/2000/0600spi.pdf>
 and tabulations by the Hawaii State Department of Business, Economic Development & Tourism.

Table B-4. OTHER LABOR INCOME

Year	First Quarter	Second Quarter	Third Quarter	Fourth Quarter	Annual Average
In Millions of Dollars at Seasonally Adjusted Annual Rates					
1982	1,293	1,376	1,445	1,497	1,403
1983	1,494	1,487	1,504	1,589	1,519
1984	1,709	1,836	1,916	1,970	1,858
1985	1,978	1,983	1,993	2,008	1,991
1986	2,024	2,059	2,089	2,114	2,072
1987	2,139	2,160	2,156	2,141	2,149
1988	2,152	2,142	2,129	2,135	2,140
1989	2,186	2,238	2,275	2,310	2,252
1990	2,360	2,389	2,455	2,572	2,444
1991	2,673	2,692	2,740	2,821	2,732
1992	2,932	2,993	3,035	3,051	3,003
1993	3,188	3,175	3,158	3,134	3,164
1994	3,252	3,209	3,209	3,185	3,214
1995	3,104	3,085	3,056	3,066	3,078
1996	3,106	3,126	3,156	3,138	3,132
1997	3,124	3,086	3,101	3,048	3,090
1998	3,086	3,078	3,088	3,107	3,090
1999	3,131	3,133	3,243	3,208	3,179
Percentage Change from the Same Period in Previous Year					
1982	3.9	16.4	13.6	17.4	12.8
1983	15.5	8.1	4.1	6.1	8.3
1984	14.4	23.5	27.4	24.0	22.3
1985	15.7	8.0	4.0	1.9	7.1
1986	2.3	3.8	4.8	5.3	4.1
1987	5.7	4.9	3.2	1.3	3.7
1988	0.6	-0.8	-1.3	-0.3	-0.4
1989	1.6	4.5	6.9	8.2	5.3
1990	8.0	6.7	7.9	11.3	8.5
1991	13.3	12.7	11.6	9.7	11.8
1992	9.7	11.2	10.8	8.2	9.9
1993	8.7	6.1	4.1	2.7	5.4
1994	2.0	1.1	1.6	1.6	1.6
1995	-4.6	-3.9	-4.8	-3.7	-4.2
1996	0.1	1.3	3.3	2.3	1.7
1997	0.6	-1.3	-1.7	-2.9	-1.3
1998	-1.2	-0.3	-0.4	1.9	0.0
1999	1.5	1.8	5.0	3.3	2.9

BEA data for 1969 O1 through 1999 O3 have been revised. See <<http://www.bea.doc.gov/bea/regional/spi/index.htm>>
 Source: U.S. Department of Commerce, Bureau of Economic Analysis, Regional Data: May 17, 2000
 <<http://www.bea.doc.gov/bea/regional/sq/sq5prn.exe>>, <<http://www.bea.doc.gov/bea/newsrel/spi0500.html>>,
<http://www.bea.doc.gov/bea/ARTICLES/REGIONAL/PERSINC/2000/0600spi.pdf>
 and tabulations by the Hawaii State Department of Business, Economic Development & Tourism.

Table B-5. PROPRIETORS' INCOME

<i>Year</i>	<i>First Quarter</i>	<i>Second Quarter</i>	<i>Third Quarter</i>	<i>Fourth Quarter</i>	<i>Annual Average</i>
In Millions of Dollars at Seasonally Adjusted Annual Rates					
1982	773	831	849	829	821
1983	1,097	1,034	956	1,013	1,025
1984	1,000	1,051	1,084	1,022	1,039
1985	1,141	1,118	1,105	1,137	1,125
1986	1,196	1,197	1,253	1,259	1,226
1987	1,302	1,310	1,359	1,397	1,342
1988	1,651	1,693	1,766	1,823	1,733
1989	1,872	1,845	1,863	1,962	1,886
1990	2,095	2,177	2,303	2,303	2,220
1991	2,127	2,169	2,168	2,169	2,158
1992	2,422	2,460	2,178	2,528	2,397
1993	2,396	2,396	2,396	2,401	2,397
1994	2,275	2,310	2,320	2,346	2,313
1995	2,335	2,350	2,366	2,370	2,355
1996	2,279	2,315	2,325	2,343	2,316
1997	2,375	2,404	2,440	2,463	2,421
1998	2,447	2,465	2,479	2,515	2,477
1999	2,551	2,594	2,626	2,667	2,610
Percentage Change from the Same Period in Previous Year					
1982	-1.3	12.4	9.8	10.1	7.7
1983	41.9	24.4	12.6	22.2	24.9
1984	-8.8	1.6	13.4	0.9	1.4
1985	14.1	6.4	1.9	11.3	8.3
1986	4.8	7.1	13.4	10.7	9.0
1987	8.9	9.4	8.5	11.0	9.4
1988	26.8	29.2	29.9	30.5	29.2
1989	13.4	9.0	5.5	7.6	8.8
1990	11.9	18.0	23.6	17.4	17.7
1991	1.5	-0.4	-5.9	-5.8	-2.8
1992	13.9	13.4	0.5	16.6	11.1
1993	-1.1	-2.6	10.0	-5.0	0.0
1994	-5.1	-3.6	-3.2	-2.3	-3.5
1995	2.6	1.7	2.0	1.0	1.8
1996	-2.4	-1.5	-1.7	-1.1	-1.7
1997	4.2	3.8	4.9	5.1	4.5
1998	3.0	2.5	1.6	2.1	2.3
1999	4.3	5.2	5.9	6.0	5.4

BEA data for 1969 Q1 through 1999 Q3 have been revised. See <<http://www.bea.doc.gov/bea/regional/spi/index.html>>
 Source: U.S. Department of Commerce, Bureau of Economic Analysis, Regional Data: May 17, 2000
 <<http://www.bea.doc.gov/bea/regional/sq/sq5prn.exe>>, <<http://www.bea.doc.gov/bea/newsrel/spi0500.html>>,
<http://www.bea.doc.gov/bea/ARTICLES/REGIONAL/PERSINC/2000/0600spi.pdf>
 and tabulations by the Hawaii State Department of Business, Economic Development & Tourism.

Table B-6. DIVIDENDS, INTEREST, AND RENT

Year	First Quarter	Second Quarter	Third Quarter	Fourth Quarter	Annual Average
In Millions of Dollars at Seasonally Adjusted Annual Rates					
1981	1,979	2,038	2,198	2,235	2,113
1982	2,254	2,262	2,255	2,078	2,212
1983	2,373	2,456	2,593	2,702	2,531
1984	2,761	2,857	2,992	3,045	2,914
1985	3,063	3,070	3,046	3,100	3,070
1986	3,199	3,227	3,213	3,193	3,208
1987	3,265	3,315	3,453	3,594	3,407
1988	3,634	3,660	3,767	3,955	3,754
1989	4,186	4,313	4,301	4,293	4,273
1990	4,402	4,462	4,572	4,622	4,515
1991	4,645	4,691	4,735	4,750	4,705
1992	4,883	4,919	3,352	4,918	4,518
1993	5,083	5,065	5,053	5,089	5,073
1994	5,182	5,332	5,497	5,614	5,406
1995	5,540	5,532	5,513	5,569	5,539
1996	5,556	5,539	5,583	5,656	5,584
1997	5,761	5,875	5,940	5,980	5,889
1998	5,958	5,995	6,040	6,083	6,019
1999	6,107	6,147	6,167	6,227	6,162
Percentage Change from the Same Period in Previous Year					
1982	13.9	11.0	2.6	-7.0	4.7
1983	5.3	8.6	15.0	30.0	14.4
1984	16.4	16.3	15.4	12.7	15.1
1985	10.9	7.5	1.8	1.8	5.4
1986	4.4	5.1	5.5	3.0	4.5
1987	2.1	2.7	7.5	12.6	6.2
1988	11.3	10.4	9.1	10.0	10.2
1989	15.2	17.8	14.2	8.5	13.8
1990	5.2	3.5	6.3	7.7	5.6
1991	5.5	5.1	3.6	2.8	4.2
1992	5.1	4.9	-29.2	3.5	-4.0
1993	4.1	3.0	50.7	3.5	12.3
1994	1.9	5.3	8.8	10.3	6.6
1995	6.9	3.8	0.3	-0.8	2.4
1996	0.3	0.1	1.3	1.6	0.8
1997	3.7	6.1	6.4	5.7	5.5
1998	3.4	2.0	1.7	1.7	2.2
1999	2.5	2.5	2.1	2.4	2.4

BEA data for 1969 Q1 through 1999 Q3 have been revised. See <<http://www.bea.doc.gov/bea/regional/spi/index.htm>>
 Source: U.S. Department of Commerce, Bureau of Economic Analysis, Regional Data: May 17, 2000
 <<http://www.bea.doc.gov/bea/regional/sq/sq5prn.exe>>, <<http://www.bea.doc.gov/bea/newsrel/spi0500.html>>,
<http://www.bea.doc.gov/bea/ARTICLES/REGIONAL/PERSINC/2000/0600spi.pdf>
 and tabulations by the Hawaii State Department of Business, Economic Development & Tourism

Table B-7. TRANSFER PAYMENTS

<i>Year</i>	<i>First Quarter</i>	<i>Second Quarter</i>	<i>Third Quarter</i>	<i>Fourth Quarter</i>	<i>Annual Average</i>
In Millions of Dollars at Seasonally Adjusted Annual Rates					
1982	1,181	1,189	1,230	1,283	1,221
1983	1,312	1,342	1,345	1,366	1,341
1984	1,376	1,383	1,391	1,436	1,397
1985	1,468	1,483	1,505	1,509	1,491
1986	1,551	1,564	1,572	1,569	1,564
1987	1,601	1,627	1,638	1,658	1,631
1988	1,717	1,732	1,755	1,781	1,746
1989	1,841	1,865	1,922	1,998	1,907
1990	2,161	2,247	2,290	2,356	2,264
1991	2,346	2,308	2,288	2,370	2,328
1992	2,521	2,629	2,768	2,934	2,713
1993	2,905	2,961	3,018	3,086	2,993
1994	3,134	3,196	3,274	3,378	3,246
1995	3,529	3,636	3,690	3,716	3,643
1996	3,752	3,732	3,709	3,698	3,723
1997	3,764	3,769	3,771	3,761	3,766
1998	3,785	3,786	3,796	3,810	3,794
1999	3,876	3,895	3,926	3,959	3,914
Percentage Change from the Same Period in Previous Year					
1982	10.4	8.8	5.2	9.2	8.3
1983	11.1	12.9	9.3	6.5	9.9
1984	4.9	3.1	3.4	5.1	4.1
1985	6.7	7.2	8.2	5.1	6.8
1986	5.7	5.5	4.5	4.0	4.9
1987	3.2	4.0	4.2	5.7	4.3
1988	7.2	6.5	7.1	7.4	7.1
1989	7.2	7.7	9.5	12.2	9.2
1990	17.4	20.5	19.1	17.9	18.7
1991	8.6	2.7	-0.1	0.6	2.8
1992	7.5	13.9	21.0	23.8	16.5
1993	15.2	12.6	9.0	5.2	10.3
1994	7.9	7.9	8.5	9.5	8.5
1995	12.6	13.8	12.7	10.0	12.2
1996	6.3	2.6	0.5	-0.5	2.2
1997	0.3	1.0	1.7	1.7	1.2
1998	0.6	0.5	0.7	1.3	0.7
1999	2.4	2.9	3.4	3.9	3.2

BEA data for 1969 Q1 through 1999 Q3 have been revised. See <<http://www.bea.doc.gov/bea/regional/spi/index.htm>>
 Source: U.S. Department of Commerce, Bureau of Economic Analysis, Regional Data: May 17, 2000
 <<http://www.bea.doc.gov/bea/regional/sq/sq5prn.exe>>, <<http://www.bea.doc.gov/bea/newsrel/spi0500.html>>,
<http://www.bea.doc.gov/bea/ARTICLES/REGIONAL/PERSINC/2000/0600spi.pdf>
 and tabulations by the Hawaii State Department of Business, Economic Development & Tourism.

Table B-8. PERSONAL CONTRIBUTIONS TO SOCIAL INSURANCE

Year	First Quarter	Second Quarter	Third Quarter	Fourth Quarter	Annual Average
In Millions of Dollars at Seasonally Adjusted Annual Rates					
1982	418	429	441	448	434
1983	467	469	466	479	470
1984	497	508	509	511	506
1985	557	565	575	586	571
1986	609	617	631	648	626
1987	670	684	700	715	692
1988	779	797	811	834	805
1989	879	901	923	946	912
1990	983	1,000	1,030	1,056	1,017
1991	1,093	1,091	1,102	1,113	1,100
1992	1,153	1,162	1,160	1,153	1,157
1993	1,199	1,194	1,172	1,158	1,181
1994	1,216	1,203	1,209	1,218	1,212
1995	1,221	1,230	1,222	1,220	1,223
1996	1,214	1,213	1,219	1,218	1,216
1997	1,238	1,245	1,263	1,252	1,250
1998	1,267	1,261	1,263	1,274	1,266
1999	1,285	1,295	1,327	1,324	1,308
Percentage Change from the Same Period in Previous Year					
1982	4.2	8.9	8.1	10.1	7.8
1983	11.7	9.3	5.7	6.9	8.4
1984	6.4	8.3	9.2	6.7	7.7
1985	12.1	11.2	13.0	14.7	12.7
1986	9.3	9.2	9.7	10.6	9.7
1987	10.0	10.9	10.9	10.3	10.5
1988	16.3	16.5	15.9	16.6	16.3
1989	12.8	13.0	13.8	13.4	13.3
1990	11.8	11.0	11.6	11.6	11.5
1991	11.2	9.1	7.0	5.4	8.1
1992	5.5	6.5	5.3	3.6	5.2
1993	4.0	2.8	1.0	0.4	2.1
1994	1.4	0.8	3.2	5.2	2.6
1995	0.4	2.2	1.1	0.2	1.0
1996	-0.6	-1.4	-0.2	-0.2	-0.6
1997	2.0	2.6	3.6	2.8	2.8
1998	2.3	1.3	0.0	1.8	1.3
1999	1.4	2.7	5.1	3.9	3.3

BEA data for 1969 Q1 through 1999 Q3 have been revised. See <<http://www.bea.doc.gov/bea/regional/spi/index.htm>>
 Source: U.S. Department of Commerce, Bureau of Economic Analysis, Regional Data: May 17, 2000
 <<http://www.bea.doc.gov/bea/regional/sq/sq5prn.exe>>, <<http://www.bea.doc.gov/bea/newsrel/spi0500.html>>,
<http://www.bea.doc.gov/bea/ARTICLES/REGIONAL/PERSINC/2000/0600spi.pdf>
 and tabulations by the Hawaii State Department of Business, Economic Development & Tourism

**Table B-9. HONOLULU and U.S. CONSUMER PRICE INDEX,
ALL URBAN CONSUMERS (CPI-U)
[1982-84=100]**

Period	U.S.	Honolulu								
		All Items	Food & Beverages	Housing	Apparel & Upkeep	Transportation	Medical Care	Recreation 1/	Educ. & Comm. 1/	Other Goods & Services
1992	140.3	155.1	148.5	161.7	114.2	147.4	182.6	(NA)	(NA)	189.0
1993	144.5	160.1	152.9	166.5	116.5	150.5	197.4	(NA)	(NA)	200.1
1994	148.2	164.5	153.4	171.6	118.7	156.4	206.0	(NA)	(NA)	209.6
1995	152.4	168.1	156.8	174.7	117.5	162.4	209.8	(NA)	(NA)	216.8
1996	156.9	170.7	156.6	176.8	118.5	167.0	215.0	(NA)	(NA)	226.5
1997	160.5	171.9	159.2	177.1	117.3	166.2	217.3	(NA)	(NA)	239.0
1998	163.0	171.5	159.1	176.0	112.2	162.5	226.1	100.8	99.1	256.1
1999	166.6	173.3	162.9	175.8	105.4	162.2	231.3	101.9	104.5	275.6
1995H1	151.5	166.9	156.5	173.4	118.1	160.0	207.8	(NA)	(NA)	214.4
H2	153.2	169.4	157.1	176.0	116.9	164.9	211.8	(NA)	(NA)	219.2
1996H1	155.8	170.5	156.9	176.8	120.0	166.3	214.9	(NA)	(NA)	220.6
H2	157.9	171.0	156.3	176.8	116.9	167.7	215.0	(NA)	(NA)	232.4
1997H1	159.9	172.1	159.4	177.3	119.8	167.8	215.6	(NA)	(NA)	232.5
H2	161.2	171.8	159.0	177.0	114.8	164.6	219.1	(NA)	(NA)	245.5
1998H1	162.3	172.0	160.0	176.3	116.4	163.2	222.5	101.4	98.9	254.3
H2	163.7	171.0	158.2	175.7	108.0	161.8	229.8	100.3	99.3	258.0
1999H1	165.4	172.7	162.4	175.5	106.0	162.3	231.0	101.3	102.6	273.9
H2	167.8	173.8	163.5	176.0	104.9	162.0	231.5	102.5	106.4	277.3
Percentage Change from the Same Period in Previous Year										
1992	3.0	4.8	1.8	5.8	3.3	5.8	6.6	(NA)	(NA)	7.6
1993	3.0	3.2	3.0	3.0	2.0	2.1	8.1	(NA)	(NA)	5.9
1994	2.6	2.7	0.3	3.1	1.9	3.9	4.4	(NA)	(NA)	4.7
1995	2.8	2.2	2.2	1.8	-1.0	3.8	1.8	(NA)	(NA)	3.4
1996	2.9	1.5	-0.1	1.2	0.9	2.8	2.5	(NA)	(NA)	4.5
1997	2.3	0.7	1.7	0.2	-1.0	-0.5	1.1	(NA)	(NA)	5.5
1998	1.6	-0.2	-0.1	-0.6	-4.3	-2.2	4.0	(NA)	(NA)	7.2
1999	2.2	1.0	2.4	-0.1	-6.1	-0.2	2.3	1.1	5.4	7.6
1995H1	3.0	2.1	3.2	1.8	-0.8	2.6	1.6	(NA)	(NA)	3.3
H2	2.6	2.2	1.2	1.9	-1.1	5.2	2.1	(NA)	(NA)	3.5
1996H1	2.8	2.2	0.3	2.0	1.6	3.9	3.4	(NA)	(NA)	2.9
H2	3.1	0.9	-0.5	0.5	0.0	1.7	1.5	(NA)	(NA)	6.0
1997H1	2.6	0.9	1.6	0.3	-0.2	0.9	0.3	(NA)	(NA)	5.4
H2	2.1	0.5	1.7	0.1	-1.8	-1.8	1.9	(NA)	(NA)	5.6
1998H1	1.5	-0.1	0.4	-0.6	-2.8	-2.7	3.2	(NA)	(NA)	9.4
H2	1.6	-0.5	-0.5	-0.7	-5.9	-1.7	4.9	(NA)	(NA)	5.1
1999H1	1.9	0.4	1.5	-0.5	-8.9	-0.6	3.8	-0.1	3.7	7.7
H2	2.5	1.6	3.4	0.2	-2.9	0.1	0.7	2.2	7.2	7.5

Data on U.S. CPI are released monthly and Honolulu CPI, twice a year in February and August for the half (H) year previous.

NA Not available.

1/ New indexes as of January 1998. Base period is December 1997. The former "Entertainment" index has been discontinued.

Source: U.S. Bureau of Labor Statistics, <<http://stats.bls.gov>>, Fax-on-Demand (415) 975-4567, and Information (415) 975-4350.

C. TAX REVENUES

Stronger economic activity translated into rising state revenues in the first quarter of the year. The revenue increases were spread over all of the major tax instruments.

General fund tax revenues grew 11.6 percent from the first quarter of 1999 to the first quarter of 2000 (Table C-2). This was the largest first-quarter increase since 1989.

Adjusting for size, most of the increase came from the 14.3 percent rise in general excise and use tax (GET) revenues (Table C-3). The GET is the largest single source of state general fund tax revenues, and it is a broad measure of economic activity. The strong first quarter growth was the largest since 1990.

After falling throughout 1999 due to rate cuts, individual income tax revenues began to rise again in the first quarter. From the first quarter of 1999 through the first quarter 2000, net individual income tax revenue rose 3.6 percent (Table C-4).

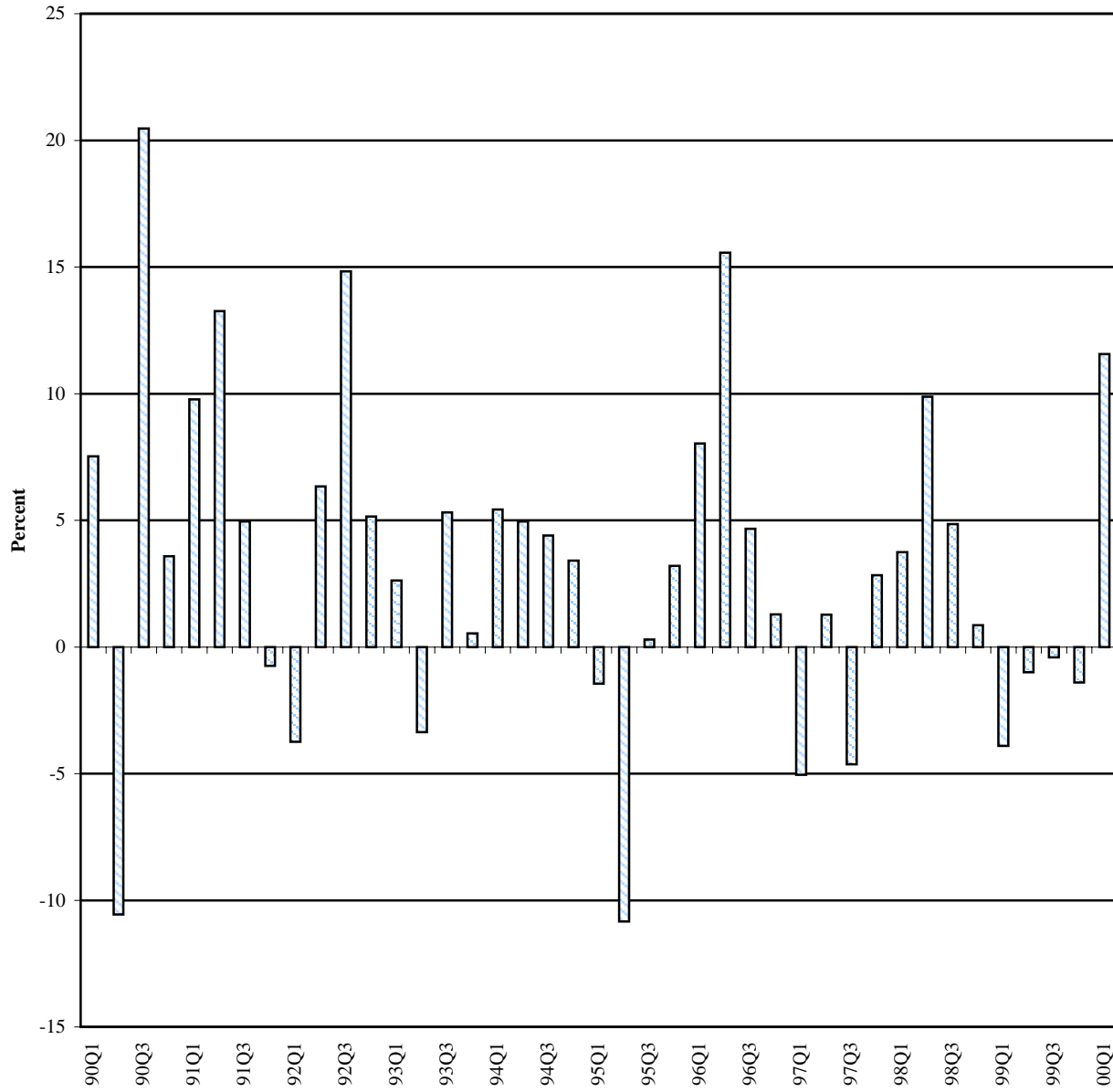
The increase in net individual income tax revenue came from declarations of estimated taxes. This revenue jumped 44.7 percent over the period (Table C-5). As a share of net individual income taxes,

declarations were 23.8 percent—the highest first-quarter share since 1991. The increase may be due to realizations of gains in the U.S. financial markets.

Net corporate income taxes also increased by a substantial 134 percent in the first quarter relative to the year-earlier quarter (Table C-9). As with individual income taxes, most of this growth came from declarations of estimated taxes (Table C-10), although there was also substantial growth in corporate payments with returns (Table C-11). However, corporate income tax revenue normally accounts for only slightly less than 2 percent of general fund revenue.

Transient accommodations tax (TAT) revenue grew by 9.6 percent in the first quarter compared to the first quarter of 1999 (Table C-13). Beginning in January 1999, the TAT rate was raised from 6 percent to 7.25 percent and the base extended to included time-share units. Some, but not all, of the rate increase was reflected in first quarter 1999 revenues (some 1998 taxes were paid in 1999). Thus, some of the first quarter 2000 TAT revenue reflects the effect of higher rates/broader base rather than increased visitor activity.

Figure 2. Annual Growth in General Fund Revenue
 [percentage change from same period in previous year]



Source: Table C-2. State General Tax Revenues.

Table C-1. GENERAL FUND TAX REVENUES AND MAJOR COMPONENTS

Year	General Excise and Use Tax	Net Individual Income Tax 1/	Net Corporate Income Tax 2/	Tax Revenues Distributed to State General Fund
In Thousands of Dollars				
1990	1,250,203	743,114	86,269	2,246,752
1991	1,287,819	1,174,144	70,568	2,397,289
1992	1,299,814	922,206	42,737	2,523,670
1993	1,308,797	951,405	22,239	2,555,912
1994	1,347,945	1,003,480	34,228	2,672,291
1995	1,386,684	918,811	37,336	2,614,713
1996	1,469,766	995,456	51,243	2,799,972
1997	1,433,012	985,000	55,594	2,756,621
1998	1,436,654	1,093,241	50,112	2,889,291
1999	1,454,731	1,053,858	47,692	2,841,290
1997 1 Qtr.	365,069	227,409	18,055	688,683
2 Qtr.	366,563	213,468	32,330	676,222
3 Qtr.	356,533	269,597	10,594	704,749
4 Qtr.	344,846	274,526	-5,386	686,967
1998 1 Qtr.	375,018	247,815	10,592	714,466
2 Qtr.	348,955	291,713	30,408	743,003
3 Qtr.	360,313	283,430	15,479	738,957
4 Qtr.	352,368	270,283	-6,368	692,866
1999 1 Qtr.	369,292	238,606	7,428	686,437
2 Qtr.	365,306	276,392	26,104	735,905
3 Qtr.	372,436	277,965	14,119	735,969
4 Qtr.	347,698	260,895	41	682,978
2000 1 Qtr.	422,222	247,130	17,358	765,790
Percentage Change from the Same Period in Previous Year				
1991	3.0	21.2	-18.2	6.7
1992	0.9	2.4	-39.4	5.3
1993	0.7	3.2	-48.0	1.3
1994	3.0	5.5	53.9	4.6
1995	2.9	-8.4	9.1	-2.2
1996	6.0	8.3	37.2	7.1
1997	-2.5	-1.1	8.5	-1.5
1998	0.3	11.0	-9.9	4.8
1999	1.3	-3.6	-4.8	-1.7
1997 1 Qtr.	-5.6	-6.1	16.9	-5.0
2 Qtr.	2.6	-2.0	14.1	1.3
3 Qtr.	-5.9	-2.6	6.9	-4.6
4 Qtr.	-0.5	6.2	-119.3	2.8
1998 1 Qtr.	2.7	9.0	-41.3	3.7
2 Qtr.	-4.8	36.7	-5.9	9.9
3 Qtr.	1.1	5.1	46.1	4.9
4 Qtr.	2.2	-1.5	-18.3	0.9
1999 1 Qtr.	-1.5	-3.7	-29.9	-3.9
2 Qtr.	4.7	-5.3	-14.2	-1.0
3 Qtr.	3.4	-1.9	-8.8	-0.4
4 Qtr.	-1.3	-3.5	100.6	-1.4
2000 1 Qtr.	14.3	3.6	133.7	11.6

These series represent data as reported by the Hawaii State Department of Taxation, without adjustment
1/ Declaration of estimated taxes, plus payments with returns, plus withholding tax on wages, less refund
Individual income tax rates changed effective January 1, 1995
2/ Declaration of estimated taxes, plus payments with returns, less refunds
Source: Hawaii State Department of Taxation.

Table C-2. STATE GENERAL FUND TAX REVENUES

<i>Year</i>	<i>First Quarter</i>	<i>Second Quarter</i>	<i>Third Quarter</i>	<i>Fourth Quarter</i>	<i>Annual</i>
In Thousands of Dollars					
1982	248,406	219,138	284,382	259,539	1,011,465
1983	267,915	270,679	295,506	275,775	1,109,876
1984	293,272	313,706	317,326	316,049	1,240,352
1985	315,085	344,413	344,675	321,618	1,325,791
1986	347,122	393,178	377,598	368,586	1,486,484
1987	400,595	461,147	430,015	438,903	1,730,661
1988	466,092	514,559	483,626	484,896	1,949,173
1989	554,241	593,091	441,009	401,572	1,989,914
1990	595,970	530,495	531,249	589,039	2,246,752
1991	654,222	600,830	557,568	584,670	2,397,289
1992	629,722	638,901	640,253	614,794	2,523,670
1993	646,216	617,400	674,236	618,060	2,555,912
1994	681,253	647,987	703,935	639,117	2,672,291
1995	671,365	577,803	705,999	659,548	2,614,713
1996	725,284	667,711	738,963	668,014	2,799,972
1997	688,683	676,222	704,749	686,967	2,756,621
1998	714,466	743,003	738,957	692,866	2,889,291
1999	686,437	735,905	735,969	682,978	2,841,290
2000	765,790	(NA)	(NA)	(NA)	(NA)
Percentage Change from the Same Period in Previous Year					
1982	1.7	-25.6	5.0	-0.6	-5.5
1983	7.9	23.5	3.9	6.3	9.7
1984	9.5	15.9	7.4	14.6	11.8
1985	7.4	9.8	8.6	1.8	6.9
1986	10.2	14.2	9.6	14.6	12.1
1987	15.4	17.4	13.9	19.1	16.5
1988	16.4	11.4	12.5	10.5	12.6
1989	18.9	15.3	-8.8	17.3	10.7
1990	7.5	-10.6	20.5	3.6	4.2
1991	9.8	13.3	5.0	-0.7	6.7
1992	-3.7	6.3	14.8	5.2	5.3
1993	2.6	-3.4	5.3	0.5	1.3
1994	5.4	5.0	4.4	3.4	4.6
1995	-1.5	-10.8	0.3	3.2	-2.2
1996	8.0	15.6	4.7	1.3	7.1
1997	-5.0	1.3	-4.6	2.8	-1.5
1998	3.7	9.9	4.9	0.9	4.8
1999	-3.9	-1.0	-0.4	-1.4	-1.7
2000	11.6	(NA)	(NA)	(NA)	(NA)

NA Not available.

Source: Hawaii State Department of Taxation.

Table C-3. GENERAL EXCISE & USE TAX REVENUES

<i>Year</i>	<i>First Quarter</i>	<i>Second Quarter</i>	<i>Third Quarter</i>	<i>Fourth Quarter</i>	<i>Annual</i>
In Thousands of Dollars					
1982	141,147	147,532	151,149	134,763	574,591
1983	155,780	159,436	151,498	148,822	615,536
1984	165,120	173,806	165,634	165,245	669,805
1985	174,055	178,697	176,769	177,860	707,381
1986	192,020	200,047	198,275	187,620	777,961
1987	216,698	214,933	219,312	218,096	869,039
1988	240,506	241,951	241,340	242,153	965,952
1989	270,801	270,683	272,645	282,347	1,096,476
1990	313,129	308,567	314,328	314,180	1,250,203
1991	345,988	304,241	335,721	301,869	1,287,819
1992	338,289	318,844	325,339	317,342	1,299,814
1993	332,689	327,549	332,661	315,898	1,308,797
1994	353,369	330,321	345,772	318,484	1,347,945
1995	363,101	335,906	348,033	339,643	1,386,684
1996	386,710	357,416	379,032	346,610	1,469,766
1997	365,069	366,563	356,533	344,846	1,433,012
1998	375,018	348,955	360,313	352,368	1,436,654
1999	369,292	365,306	372,436	347,698	1,454,731
2000	422,222	(NA)	(NA)	(NA)	(NA)
Percentage Change from the Same Period in Previous Year					
1982	4.8	-3.1	2.1	-3.9	-0.1
1983	10.4	8.1	0.2	10.4	7.1
1984	6.0	9.0	9.3	11.0	8.8
1985	5.4	2.8	6.7	7.6	5.6
1986	10.3	11.9	12.2	5.5	10.0
1987	12.9	7.4	10.6	16.2	11.7
1988	11.0	12.6	10.0	11.0	11.2
1989	12.6	11.9	13.0	16.6	13.5
1990	15.6	14.0	15.3	11.3	14.0
1991	10.5	-1.4	6.8	-3.9	3.0
1992	-2.2	4.8	-3.1	5.1	0.9
1993	-1.7	2.7	2.3	-0.5	0.7
1994	6.2	0.8	3.9	0.8	3.0
1995	2.8	1.7	0.7	6.6	2.9
1996	6.5	6.4	8.9	2.1	6.0
1997	-5.6	2.6	-5.9	-0.5	-2.5
1998	2.7	-4.8	1.1	2.2	0.3
1999	-1.5	4.7	3.4	-1.3	1.3
2000	14.3	(NA)	(NA)	(NA)	(NA)

NA Not available.

Manufactured goods shipped out of state have been exempted from the general excise tax by Act 23¹ SLH 1987, effective January 1, 1988.

Source: Hawaii State Department of Taxation.

Table C-4. NET INDIVIDUAL INCOME TAX REVENUES

<i>Year</i>	<i>First Quarter</i>	<i>Second Quarter</i>	<i>Third Quarter</i>	<i>Fourth Quarter</i>	<i>Annual</i>
In Thousands of Dollars					
1982	85,998	12,566	98,191	102,059	298,814
1983	94,527	54,183	107,922	102,844	359,476
1984	112,154	81,345	111,966	108,421	413,885
1985	108,567	100,301	125,692	115,999	450,559
1986	125,668	99,847	129,120	135,552	490,187
1987	134,393	143,625	138,773	157,936	574,727
1988	159,295	170,005	168,975	182,516	680,790
1989	205,046	211,019	176,720	209,181	801,966
1990	201,606	107,591	215,990	217,927	743,114
1991	316,671	345,208	267,023	245,243	1,174,144
1992	228,846	215,991	244,012	233,357	922,206
1993	233,868	211,674	262,953	242,909	951,405
1994	236,377	220,304	281,470	265,328	1,003,480
1995	224,594	154,311	277,058	262,848	918,811
1996	242,252	217,770	276,896	258,539	995,456
1997	227,409	213,468	269,597	274,526	985,000
1998	247,815	291,713	283,430	270,283	1,093,241
1999 1/	238,606	276,392	277,965	260,895	1,053,858
2000	247,130	(NA)	(NA)	(NA)	(NA)
Percentage Change from the Same Period in Previous Year					
1982	2.9	-84.6	5.8	9.1	-15.1
1983	10.1	331.2	9.9	1.3	20.7
1984	18.9	50.1	3.7	6.7	15.6
1985	-3.2	23.3	12.3	3.1	7.8
1986	15.8	-0.5	2.7	21.2	9.8
1987	6.9	43.8	7.5	16.5	17.2
1988	18.5	18.4	21.8	15.6	18.5
1989	28.7	24.1	4.6	14.6	17.8
1990	-1.7	-49.0	22.2	4.2	-7.3
1991	25.3	73.1	11.3	1.7	21.2
1992	-9.4	16.0	1.5	5.3	2.4
1993	2.2	-2.0	7.8	4.1	3.2
1994	1.1	4.1	7.0	9.2	5.5
1995	-5.0	-30.0	-1.6	-0.9	-8.4
1996	7.9	41.1	-0.1	-1.6	8.3
1997	-6.1	-2.0	-2.6	6.2	-1.1
1998	9.0	36.7	5.1	-1.5	11.0
1999 1/	-3.7	-5.3	-1.9	-3.5	-3.6
2000	3.6	(NA)	(NA)	(NA)	(NA)

NA Not available.

Net Individual Income tax includes declaration of estimated taxes plus payments with returns plus withholding tax on wages less refunds.

1/ Individual income tax rates changed effective January 1, 1999.

Source: Hawaii State Department of Taxation.

Table C-5. DECLARATION OF ESTIMATED TAXES - INDIVIDUAL

<i>Year</i>	<i>First Quarter</i>	<i>Second Quarter</i>	<i>Third Quarter</i>	<i>Fourth Quarter</i>	<i>Annual</i>
In Thousands of Dollars					
1982	10,662	15,533	8,515	4,669	39,379
1983	10,618	16,827	8,374	5,895	41,713
1984	11,135	19,527	9,844	6,048	46,555
1985	13,054	24,046	11,262	4,606	52,969
1986	18,072	24,902	10,270	11,276	64,520
1987	24,231	36,322	11,000	17,991	89,544
1988	32,825	46,532	19,783	20,040	119,180
1989	54,823	60,432	22,282	24,566	162,104
1990	54,441	54,768	31,377	29,780	170,366
1991	83,829	72,867	36,623	22,118	215,437
1992	49,738	68,535	31,351	17,657	167,281
1993	48,738	59,889	40,904	17,164	166,694
1994	46,629	60,087	31,385	16,766	154,867
1995	34,625	56,884	28,113	16,929	136,552
1996	35,618	63,964	30,363	21,420	151,365
1997	39,376	69,322	32,743	24,806	166,247
1998	41,013	83,620	40,061	29,539	194,233
1999 1/	40,633	88,883	42,225	25,301	197,042
2000	58,812	(NA)	(NA)	(NA)	(NA)
Percentage Change from the Same Period in Previous Year					
1982	-2.8	-1.3	-8.5	-20.3	-6.0
1983	-0.4	8.3	-1.7	26.3	5.9
1984	4.9	16.1	17.5	2.6	11.6
1985	17.2	23.1	14.4	-23.9	13.8
1986	38.5	3.6	-8.8	144.8	21.8
1987	34.1	45.9	7.1	59.6	38.8
1988	35.5	28.1	79.8	11.4	33.1
1989	67.0	29.9	12.6	22.6	36.0
1990	-0.7	-9.4	40.8	21.2	5.1
1991	54.0	33.0	16.7	-25.7	26.5
1992	-40.7	-5.9	-14.4	-20.2	-22.4
1993	-2.0	-12.6	30.5	-2.8	-0.4
1994	-4.3	0.3	-23.3	-2.3	-7.1
1995	-25.7	-5.3	-10.4	1.0	-11.8
1996	2.9	12.4	8.0	26.5	10.8
1997	10.6	8.4	7.8	15.8	9.8
1998	4.2	20.6	22.3	19.1	16.8
1999 1/	0.9	6.3	5.4	-14.3	1.4
2000	44.7	(NA)	(NA)	(NA)	(NA)

NA Not available.

1/ Individual income tax rates changed effective January 1, 1999.

Source: Hawaii State Department of Taxation.

Table C-6. PAYMENT WITH RETURNS - INDIVIDUAL

<i>Year</i>	<i>First Quarter</i>	<i>Second Quarter</i>	<i>Third Quarter</i>	<i>Fourth Quarter</i>	<i>Annual</i>
In Thousands of Dollars					
1982	3,124	20,064	1,572	1,224	25,984
1983	4,293	19,810	2,317	2,493	28,914
1984	4,545	24,776	2,671	2,792	34,784
1985	4,804	30,817	3,397	1,791	40,810
1986	3,381	32,043	4,365	3,256	43,046
1987	5,798	40,987	5,304	4,677	56,766
1988	7,483	47,588	7,327	5,765	68,163
1989	6,877	59,173	7,112	7,410	80,572
1990	6,756	50,732	8,199	7,647	73,334
1991	5,705	66,503	9,113	7,424	88,744
1992	9,151	58,339	7,405	7,033	81,928
1993	7,809	52,486	8,956	6,861	76,112
1994	9,388	44,085	7,194	7,849	68,517
1995	9,613	35,705	6,645	7,610	59,573
1996	8,725	43,125	7,072	7,452	66,374
1997	8,594	47,163	7,039	10,585	73,381
1998	10,673	65,897	9,645	7,731	93,947
1999 1/	12,575	65,967	8,615	8,158	95,315
2000	10,644	(NA)	(NA)	(NA)	(NA)
Percentage Change from the Same Period in Previous Year					
1982	7.8	-25.4	-12.1	-17.1	-21.4
1983	37.4	-1.3	47.4	103.7	11.3
1984	5.8	25.1	15.2	12.0	20.3
1985	5.7	24.4	27.2	-35.9	17.3
1986	-29.6	4.0	28.5	81.8	5.5
1987	71.4	27.9	21.5	43.6	31.9
1988	29.1	16.1	38.1	23.3	20.1
1989	-8.1	24.3	-2.9	28.5	18.2
1990	-1.8	-14.3	15.3	3.2	-9.0
1991	-15.6	31.1	11.1	-2.9	21.0
1992	60.4	-12.3	-18.7	-5.3	-7.7
1993	-14.7	-10.0	20.9	-2.4	-7.1
1994	20.2	-16.0	-19.7	14.4	-10.0
1995	2.4	-19.0	-7.6	-3.0	-13.1
1996	-9.2	20.8	6.4	-2.1	11.4
1997	-1.5	9.4	-0.5	42.1	10.6
1998	24.2	39.7	37.0	-27.0	28.0
1999 1/	17.8	0.1	-10.7	5.5	1.5
2000	-15.4	(NA)	(NA)	(NA)	(NA)

NA Not available.

1/ Individual income tax rates changed effective January 1, 1999.

Source: Hawaii State Department of Taxation.

Table C-7. WITHHOLDING TAX ON WAGES - INDIVIDUAL

Year	First Quarter	Second Quarter	Third Quarter	Fourth Quarter	Annual
In Thousands of Dollars					
1982	94,279	82,909	97,494	97,677	372,359
1983	103,313	97,717	105,636	96,360	403,025
1984	112,647	104,792	111,812	102,881	432,132
1985	114,606	111,848	118,662	113,646	458,763
1986	121,509	118,875	126,057	126,628	493,069
1987	134,033	133,524	135,160	140,521	543,239
1988	155,432	151,872	154,805	163,618	625,727
1989	180,767	174,513	174,237	187,230	716,747
1990	197,928	191,244	198,960	195,611	783,743
1991	227,136	205,838	221,287	215,702	869,962
1992	238,334	220,440	226,698	223,665	909,136
1993	255,001	230,927	233,087	230,764	949,779
1994	267,686	250,469	261,194	253,143	1,032,491
1995	277,740	254,134	266,301	253,661	1,051,836
1996	275,532	263,054	261,439	245,463	1,045,488
1997	260,823	244,151	247,865	253,505	1,006,343
1998	266,564	259,812	249,448	251,042	1,026,866
1999 1/	257,327	234,529	242,458	242,843	977,157
2000	256,248	(NA)	(NA)	(NA)	(NA)
Percentage Change from the Same Period in Previous Year					
1982	17.3	-5.5	6.7	12.6	7.6
1983	9.6	17.9	8.4	-1.3	8.2
1984	9.0	7.2	5.8	6.8	7.2
1985	1.7	6.7	6.1	10.5	6.2
1986	6.0	6.3	6.2	11.4	7.5
1987	10.3	12.3	7.2	11.0	10.2
1988	16.0	13.7	14.5	16.4	15.2
1989	16.3	14.9	12.6	14.4	14.5
1990	9.5	9.6	14.2	4.5	9.3
1991	14.8	7.6	11.2	10.3	11.0
1992	4.9	7.1	2.4	3.7	4.5
1993	7.0	4.8	2.8	3.2	4.5
1994	5.0	8.5	12.1	9.7	8.7
1995	3.8	1.5	2.0	0.2	1.9
1996	-0.8	3.5	-1.8	-3.2	-0.6
1997	-5.3	-7.2	-5.2	3.3	-3.7
1998	2.2	6.4	0.6	-1.0	2.0
1999 1/	-3.5	-9.7	-2.8	-3.3	-4.8
2000	-0.4	(NA)	(NA)	(NA)	(NA)

NA Not available.

1/ Individual income tax rates changed effective January 1, 1999.

Source: Hawaii State Department of Taxation.

Table C-8. REFUNDS - INDIVIDUAL

<i>Year</i>	<i>First Quarter</i>	<i>Second Quarter</i>	<i>Third Quarter</i>	<i>Fourth Quarter</i>	<i>Annual</i>
In Thousands of Dollars					
1982	22,394	105,940	9,390	3,240	140,964
1983	23,912	80,171	8,405	3,092	115,580
1984	16,173	67,750	12,361	3,300	99,585
1985	23,898	66,411	7,630	4,045	101,983
1986	17,294	75,973	11,572	5,608	110,447
1987	29,669	67,208	12,692	5,253	114,821
1988	36,446	75,988	12,940	6,907	132,281
1989	37,421	83,099	26,911	10,025	157,456
1990	57,520	189,153	22,546	15,110	284,329
1991	64,072	158,990	26,586	23,534	273,182
1992	68,377	131,323	21,442	14,998	236,140
1993	77,680	131,627	19,994	11,879	241,180
1994	87,326	134,337	18,303	12,430	252,396
1995	97,385	192,412	24,001	15,352	329,150
1996	77,623	152,373	21,979	15,796	267,771
1997	81,384	147,168	18,050	14,370	260,971
1998	70,436	117,616	15,724	18,029	221,805
1999 1/	71,929	112,987	15,334	15,407	215,656
2000	78,575	(NA)	(NA)	(NA)	(NA)
Percentage Change from the Same Period in Previous Year					
1982	103.7	117.7	-3.1	53.3	97.3
1983	6.8	-24.3	-10.5	-4.6	-18.0
1984	-32.4	-15.5	47.1	6.7	-13.8
1985	47.8	-2.0	-38.3	22.6	2.4
1986	-27.6	14.4	51.7	38.6	8.3
1987	71.6	-11.5	9.7	-6.3	4.0
1988	22.8	13.1	2.0	31.5	15.2
1989	2.7	9.4	108.0	45.1	19.0
1990	53.7	127.6	-16.2	50.7	80.6
1991	11.4	-15.9	17.9	55.8	-3.9
1992	6.7	-17.4	-19.3	-36.3	-13.6
1993	13.6	0.2	-6.8	-20.8	2.1
1994	12.4	2.1	-8.5	4.6	4.6
1995	11.5	43.2	31.1	23.5	30.4
1996	-20.3	-20.8	-8.4	2.9	-18.6
1997	4.8	-3.4	-17.9	-9.0	-2.5
1998	-13.5	-20.1	-12.9	25.5	-15.0
1999 1/	-2.1	-3.9	-2.5	-14.5	-2.8
2000	9.2	(NA)	(NA)	(NA)	(NA)

NA Not available.

1/ Individual income tax rates changed effective January 1, 1999.

Source: Hawaii State Department of Taxation.

Table C-9. NET CORPORATE INCOME TAX REVENUES

<i>Year</i>	<i>First Quarter</i>	<i>Second Quarter</i>	<i>Third Quarter</i>	<i>Fourth Quarter</i>	<i>Annual</i>
In Thousands of Dollars					
1982	10,512	15,604	7,294	1,373	34,784
1983	6,455	9,343	11,331	831	27,960
1984	9,588	14,681	10,437	4,975	39,681
1985	7,521	21,903	11,552	3,097	44,074
1986	7,783	17,157	14,902	6,376	46,217
1987	13,646	26,593	17,857	9,176	67,272
1988	18,135	20,850	16,226	7,883	63,094
1989	23,553	24,709	18,757	5,690	72,710
1990	22,507	27,904	29,076	6,783	86,269
1991	23,720	36,369	11,090	-611	70,568
1992	17,439	15,863	11,156	-1,722	42,737
1993	6,535	13,374	13,514	-11,184	22,239
1994	10,452	26,213	9,133	-11,571	34,228
1995	12,869	19,818	12,030	-7,380	37,336
1996	15,451	28,338	9,910	-2,456	51,243
1997	18,055	32,330	10,594	-5,386	55,594
1998	10,592	30,408	15,479	-6,368	50,112
1999	7,428	26,104	14,119	41	47,692
2000	17,358	(NA)	(NA)	(NA)	(NA)
Percentage Change from the Same Period in Previous Year					
1982	4.7	-23.3	-24.8	-60.7	-20.2
1983	-38.6	-40.1	55.3	-39.5	-19.6
1984	48.5	57.1	-7.9	498.7	41.9
1985	-21.5	49.2	10.7	-37.7	11.1
1986	3.5	-21.7	29.0	105.8	4.9
1987	75.3	55.0	19.8	43.9	45.6
1988	32.9	-21.6	-9.1	-14.1	-6.2
1989	29.7	18.5	15.6	-27.8	15.2
1990	-4.3	12.9	55.0	19.2	18.7
1991	5.4	30.3	-61.9	-109.0	-18.2
1992	-26.5	-56.4	0.6	-181.7	-39.4
1993	-62.5	-15.7	21.1	-549.9	-48.0
1994	59.9	96.0	-32.4	-3.5	53.9
1995	23.1	-24.4	31.7	36.2	9.1
1996	20.1	43.0	-17.6	66.7	37.2
1997	16.9	14.1	6.9	-119.3	8.5
1998	-41.3	-5.9	46.1	-18.3	-9.9
1999	-29.9	-14.2	-8.8	100.6	-4.8
2000	133.7	(NA)	(NA)	(NA)	(NA)

NA Not available.

Net Corporation Income tax includes declaration of estimated taxes plus payments with returns less refunds.

Source: Hawaii State Department of Taxation.

Table C-10. DECLARATION OF ESTIMATED TAXES - CORPORATE

<i>Year</i>	<i>First Quarter</i>	<i>Second Quarter</i>	<i>Third Quarter</i>	<i>Fourth Quarter</i>	<i>Annual</i>
In Thousands of Dollars					
1982	10,316	13,980	7,696	3,914	35,906
1983	8,427	9,854	11,008	4,720	34,009
1984	10,363	14,272	10,343	5,435	40,414
1985	10,065	20,703	11,204	4,919	46,892
1986	6,899	16,141	13,783	8,228	45,051
1987	13,848	25,171	18,229	8,651	65,899
1988	18,559	21,577	17,944	8,733	66,813
1989	23,599	23,158	19,775	9,818	76,349
1990	24,238	29,810	29,837	15,853	99,738
1991	28,257	38,849	21,596	12,849	101,551
1992	23,809	20,506	17,337	12,358	74,012
1993	17,294	17,203	19,955	10,232	64,684
1994	18,048	29,934	19,092	10,075	77,149
1995	17,214	26,846	16,498	10,198	70,756
1996	22,423	30,651	15,409	12,077	80,559
1997	21,651	33,029	19,673	14,235	88,587
1998	15,930	33,419	19,273	13,035	81,657
1999	14,832	31,644	19,049	24,640	90,166
2000	19,221	(NA)	(NA)	(NA)	(NA)
Percentage Change from the Same Period in Previous Year					
1982	-6.0	-23.6	-12.9	-10.0	-15.4
1983	-18.3	-29.5	43.0	20.6	-5.3
1984	23.0	44.8	-6.0	15.1	18.8
1985	-2.9	45.1	8.3	-9.5	16.0
1986	-31.5	-22.0	23.0	67.2	-3.9
1987	100.7	55.9	32.3	5.1	46.3
1988	34.0	-14.3	-1.6	0.9	1.4
1989	27.2	7.3	10.2	12.4	14.3
1990	2.7	28.7	50.9	61.5	30.6
1991	16.6	30.3	-27.6	-19.0	1.8
1992	-15.7	-47.2	-19.7	-3.8	-27.1
1993	-27.4	-16.1	15.1	-17.2	-12.6
1994	4.4	74.0	-4.3	-1.5	19.3
1995	-4.6	-10.3	-13.6	1.2	-8.3
1996	30.3	14.2	-6.6	18.4	13.9
1997	-3.4	7.8	27.7	17.9	10.0
1998	-26.4	1.2	-2.0	-8.4	-7.8
1999	-6.9	-5.3	-1.2	89.0	10.4
2000	29.6	(NA)	(NA)	(NA)	(NA)

NA Not available.

Source: Hawaii State Department of Taxation.

Table C-11. PAYMENT WITH RETURNS - CORPORATE

<i>Year</i>	<i>First Quarter</i>	<i>Second Quarter</i>	<i>Third Quarter</i>	<i>Fourth Quarter</i>	<i>Annual</i>
In Thousands of Dollars					
1982	1,014	2,317	403	-668	3,065
1983	-1,131	306	1,221	-2,651	-2,255
1984	-58	1,417	763	38	2,159
1985	-1,552	1,889	1,210	240	1,787
1986	1,082	2,239	2,346	1,742	7,410
1987	2,517	2,994	1,864	3,495	10,870
1988	1,784	3,152	2,733	3,284	10,953
1989	2,169	3,867	2,062	3,349	11,447
1990	3,062	2,398	3,374	4,221	13,055
1991	3,335	4,006	2,303	2,708	12,352
1992	6,467	2,741	1,555	2,847	13,609
1993	4,321	1,881	2,899	2,150	11,252
1994	3,009	1,471	3,087	2,255	9,821
1995	1,925	1,531	1,796	1,640	6,891
1996	1,999	2,586	1,782	3,917	10,283
1997	2,273	3,481	2,126	2,410	10,290
1998	2,043	1,200	1,358	3,055	7,656
1999	2,469	1,588	1,573	2,199	7,828
2000	4,808	(NA)	(NA)	(NA)	(NA)
Percentage Change from the Same Period in Previous Year					
1982	430.8	0.2	-74.8	-171.8	-39.1
1983	-211.5	-86.8	203.2	-296.6	-173.6
1984	94.9	362.5	-37.5	101.4	195.8
1985	-2590.3	33.4	58.7	528.2	-17.2
1986	169.7	18.5	93.8	627.0	314.6
1987	132.5	33.7	-20.5	100.6	46.7
1988	-29.1	5.3	46.6	-6.0	0.8
1989	21.6	22.7	-24.6	2.0	4.5
1990	41.2	-38.0	63.6	26.0	14.1
1991	8.9	67.0	-31.8	-35.8	-5.4
1992	93.9	-31.6	-32.5	5.1	10.2
1993	-33.2	-31.4	86.5	-24.5	-17.3
1994	-30.4	-21.8	6.5	4.9	-12.7
1995	-36.0	4.1	-41.8	-27.3	-29.8
1996	3.8	68.9	-0.8	138.8	49.2
1997	13.7	34.6	19.3	-38.5	0.1
1998	-10.1	-65.5	-36.1	26.8	-25.6
1999	20.8	32.4	15.8	-28.0	2.2
2000	94.7	(NA)	(NA)	(NA)	(NA)

NA Not available.

Source: Hawaii State Department of Taxation.

Table C-12. REFUNDS - CORPORATE

<i>Year</i>	<i>First Quarter</i>	<i>Second Quarter</i>	<i>Third Quarter</i>	<i>Fourth Quarter</i>	<i>Annual</i>
In Thousands of Dollars					
1982	818	694	804	1,872	4,188
1983	842	817	898	1,239	3,795
1984	717	1,007	668	499	2,892
1985	992	689	862	2,061	4,605
1986	199	1,224	1,227	3,594	6,244
1987	2,719	1,572	2,236	2,970	9,497
1988	2,208	3,879	4,451	4,134	14,672
1989	2,215	2,315	3,080	7,476	15,086
1990	4,793	4,304	4,135	13,291	26,524
1991	7,873	6,486	12,808	16,167	43,334
1992	12,837	7,385	7,736	16,927	44,884
1993	15,081	5,710	9,340	23,566	53,697
1994	10,605	5,192	13,045	23,901	52,742
1995	6,270	8,559	6,264	19,219	40,311
1996	8,971	4,899	7,281	18,449	39,599
1997	5,868	4,180	11,205	22,030	43,283
1998	7,381	4,210	5,151	22,459	39,201
1999	9,873	7,128	6,503	26,798	50,302
2000	6,670	(NA)	(NA)	(NA)	(NA)
Percentage Change from the Same Period in Previous Year					
1982	27.2	-163.5	-10.1	-4.8	-7.3
1983	-2.9	-17.7	-11.6	33.8	9.4
1984	14.8	-23.3	25.5	59.7	23.8
1985	-38.3	31.6	-29.0	-313.2	-59.2
1986	80.0	-77.5	-42.3	-74.4	-35.6
1987	-1,269.8	-28.4	-82.3	17.4	-52.1
1988	18.8	-146.8	-99.1	-39.2	-54.5
1989	-0.3	40.3	30.8	-80.9	-2.8
1990	-116.4	-85.9	-34.3	-77.8	-75.8
1991	-64.2	-50.7	-209.7	-21.6	-63.4
1992	-63.1	-13.9	39.6	-4.7	-3.6
1993	-17.5	22.7	-20.7	-39.2	-19.6
1994	29.7	9.1	-39.7	-1.4	1.8
1995	40.9	-64.9	52.0	19.6	23.6
1996	-43.1	42.8	-16.2	4.0	1.8
1997	34.6	14.7	-53.9	-19.4	-9.3
1998	-25.8	-0.7	54.0	-1.9	9.4
1999	33.8	69.3	26.2	19.3	28.3
2000	-32.4	(NA)	(NA)	(NA)	(NA)

NA Not available.

Table C-13. TRANSIENT ACCOMMODATIONS TAX REVENUES

<i>Year</i>	<i>First Quarter</i>	<i>Second Quarter</i>	<i>Third Quarter</i>	<i>Fourth Quarter</i>	<i>Annual</i>
In Thousands of Dollars					
1987 1/	7,216	16,294	16,164	13,554	53,228
1988	18,468	19,093	17,890	15,239	70,689
1989	20,823	22,022	18,438	19,712	80,995
1990	22,359	21,928	21,292	17,877	83,456
1991	20,926	19,127	20,019	17,859	77,931
1992	20,903	21,195	19,355	19,395	80,848
1993	20,893	20,665	17,156	16,692	75,406
1994 2/	22,909	19,765	22,254	21,570	86,497
1995	27,219	26,997	26,601	24,801	105,618
1996	34,193	30,146	32,397	27,246	123,983
1997	32,015	33,797	31,899	29,181	126,892
1998	34,047	31,949	31,231	28,655	125,882
1999 3/	37,219	39,428	40,767	35,953	153,367
2000	46,216	(NA)	(NA)	(NA)	(NA)
Percentage Change from the Same Period in Previous Year					
1988	155.9	17.2	10.7	12.4	32.8
1989	12.7	15.3	3.1	29.4	14.6
1990	7.4	-0.4	15.5	-9.3	3.0
1991	-6.4	-12.8	-6.0	-0.1	-6.6
1992	-0.1	10.8	-3.3	8.6	3.7
1993	0.0	-2.5	-11.4	-13.9	-6.7
1994 2/	9.6	-4.4	29.7	29.2	14.7
1995	18.8	36.6	19.5	15.0	22.1
1996	25.6	11.7	21.8	9.9	17.4
1997	-6.4	12.1	-1.5	7.1	2.3
1998	6.3	-5.5	-2.1	-1.8	-0.8
1999 3/	9.3	23.4	30.5	25.5	21.8
2000	9.6	(NA)	(NA)	(NA)	(NA)

NA Not available.

1/ Tax collection for this category began in 1987.

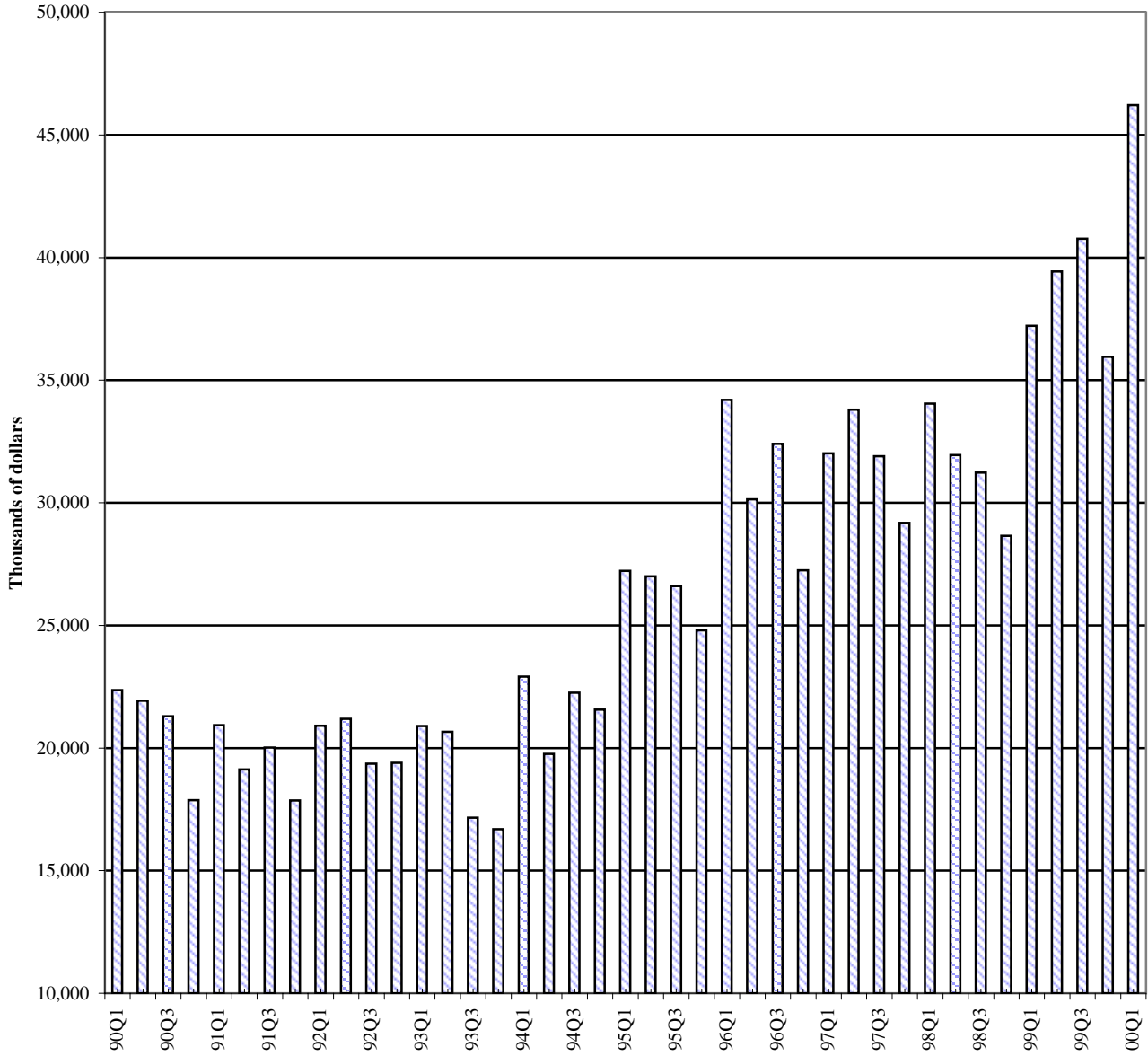
2/ Rate increased from 5% to 6% on July 1, 1994.

3/ Rate increased from 6% to 7.25% and tax base increased to include time-share units on January 1, 1999.

Source: Hawaii State Department of Taxation.

Figure 3. Transient Accommodations Tax Revenues

[Thousands of dollars]



Source: Table C-13. Transient Accommodations Tax Revenues.

D. TOURISM

Recent tourism statistics show improvement in Hawaii's visitor industry in the first quarter. These statistics are part of DBEDT's revision of tourism numbers to improve the accuracy and validity of the data. At this time comparable data for years prior to 1999 are not yet available. These data will be released soon and will appear in the next issue of the *Quarterly Statistical and Economic Report*.

Visitor arrivals to Hawaii expanded by 2.0 percent from the first quarter of 1999 to the first quarter of 2000 (Table D-1). All of this growth came from visitors traveling on domestic-flight carriers from U.S. mainland. The number of domestic-flight visitors increased 4.8 percent over the period.

In contrast, the number of visitors traveling on international-flight carriers fell by 2.4 percent. About 70 percent of international-flight visitor arrivals are Japanese and the total number of Japanese arrivals to Hawaii declined by 2.9 percent in the first quarter from the year-earlier quarter.

Visitor days, the product of visitor arrivals and average length of stay, showed similar patterns. Overall, visitor days increased by 1.7 percent. Domestic-flight visitor days rose by 5.1 percent, reflecting an increase in average length of stay from the first quarter of 1999 to the first quarter 2000. International-flight visitor days fell by 5.5

percent, reflecting some reduction in average length of stay over the period.

Hotel occupancy rates rose by 1.2 percentage points from the first quarter of 1999 to the first quarter of 2000 (Table D-2). Occupancy rates are now higher than at any time since the first quarter of 1997.

Readers will recognize that these data differ substantially from those reported in the past. The current format reflects revisions in methodology that should substantially improve the accuracy of the data. However, these data are not comparable with earlier figures. Readers interested in reviewing the new data in detail can find them at <http://www.hawaii.gov/dbedt/monthly/index.html>.

Readers interested in reviewing the earlier now-obsolete data can find them in previous versions of this publication <http://www.hawaii.gov/dbedt/qser.html>.

Readers interested in reviewing monthly component-detail data can find them on the Selected Economic Activities web page <http://www.hawaii.gov/dbedt/sea.html>.

Earlier data that are comparable with the current data in Table D-1 will be released in July 2000. These historical data will accompany a more detailed description of the revisions and their motivation. The September 2000 issue of the *QSER* will also contain comparable historical data.

**Table D-1. VISITOR ARRIVALS, AVERAGE LENGTH OF STAY, AND
AVERAGE DAILY VISITOR CENSUS - BY AIR**

	1999 First Quarter	2000P First Quarter	Percentage change from same period previous year
Total Visitor Arrivals on Domestic & International Flights			
Total Arrivals	1,689,881	1,722,991	2.0
Domestic Flight Arrivals	1,022,870	1,071,927	4.8
International Flight Arrivals	667,011	651,064	-2.4
Average Length of Stay			
Total Arrivals	9.41	9.39	-0.3
Domestic Flight Arrivals	10.57	10.60	0.3
International Flight Arrivals	7.64	7.40	-3.2
Visitor Days			
Total Arrivals	15,906,300	16,175,820	1.7
Domestic Flight Arrivals	10,811,340	11,359,780	5.1
International Flight Arrivals	5,094,960	4,816,040	-5.5
Average Daily Census			
Total Arrivals	176,740	177,750	0.6
Domestic Flight Arrivals	120,130	124,830	3.9
International Flight Arrivals	56,610	52,920	-6.5

Source: Department of Business, Economic Development & Tourism, Research and Economic Analysis Division.

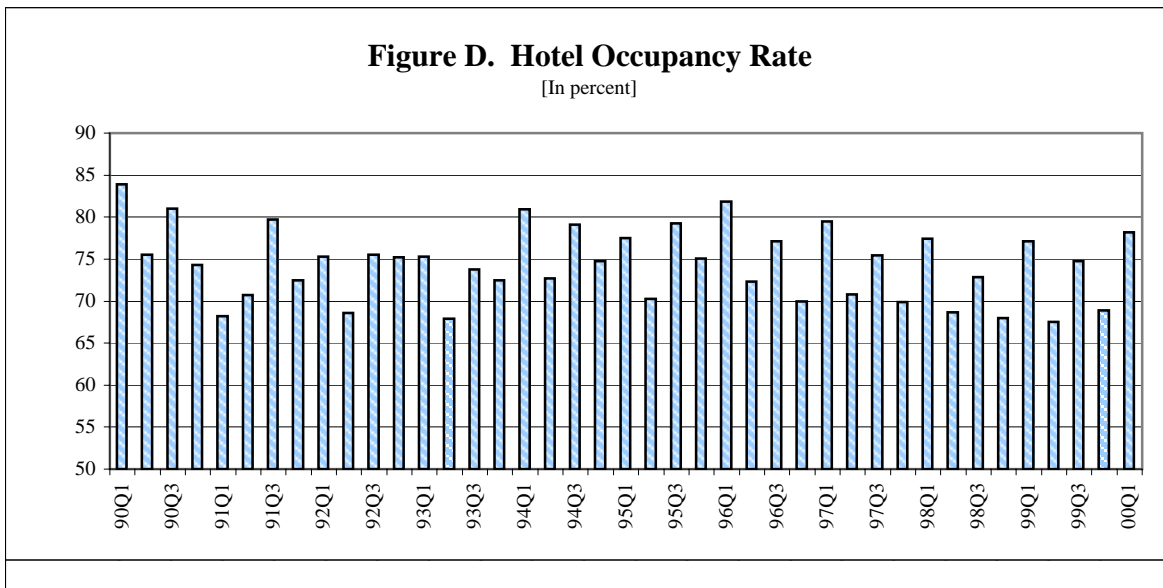
Table D-2. HOTEL OCCUPANCY RATE

Year	First Quarter	Second Quarter	Third Quarter	Fourth Quarter	Annual
In Percent					
1982	79.0	65.9	70.9	66.7	70.4
1983	75.2	68.1	71.7	66.5	69.7
1984	84.0	75.6	74.6	75.1	76.0
1985	88.1	69.1	75.0	72.5	76.1
1986	87.0	78.8	79.9	76.8	81.7
1987	88.0	77.1	82.1	77.8	81.1
1988	81.7	75.1	81.3	75.1	78.5
1989	85.9	73.9	81.0	75.7	79.0
1990	83.9	75.5	81.0	74.3	78.8
1991	68.2	70.7	79.7	72.5	72.4
1992	75.3	68.6	75.5	75.2	72.7
1993	75.3	67.9	73.8	72.5	72.0
1994	80.9	72.7	79.1	74.8	76.5
1995	79.5	70.3	79.2	75.1	75.8
1996	81.9	72.3	77.1	70.0	75.2
1997	79.5	70.8	75.5	69.9	73.9
1998	77.4	68.7	72.9	68.0	71.5
1999	77.1	67.5	74.8	68.9	72.1
2000	78.2	(NA)	(NA)	(NA)	(NA)

NA Not available.

Quarterly averages are computed by Hawaii State Department of Business, Economic Development & Tourism from PKF-Hawaii monthly averages through January 1995 and PricewaterhouseCoopers monthly averages from February 1995.

Sources: Hawaii State Department of Business, Economic Development & Tourism, PKF-Hawaii and Smith Travel Research, PricewaterhouseCoopers LLP.



E. CONSTRUCTION

Construction activity continued to increase in the first quarter of the year. While not as strong as last year, the value of building permits grew at a healthy rate, and the number of permits also expanded strongly. The sharp rise in permits observed in 1999 seems to be translating into real construction activity this year.

The value of private building authorizations grew by 8.4 percent from the first quarter of 1999 to the first quarter 2000 (Table E-1). Most of this growth came from residential permits, followed by additions and alterations. The value of commercial and industrial building permits actually fell over the period. But this partly reflected an unusually large value of such permits in the first quarter of 1999 associated with the new tower at the Hilton Hawaiian Village on Oahu.

The contracting tax base, a measure of actual construction activity, expanded by a sharp 19.9 percent in the first quarter 2000 relative to the year-earlier quarter. This increase seems to indicate that the large (29.7 percent) increase in permits in 1999 is being translated into accelerated construction activity this year. If the pace continues through the year, it would be the fastest rate of growth since 1990.

The increase in construction jobs corroborates the notion that real construction activity has increased in Hawaii. As reported in Section A, construction jobs grew by a rapid 8.8 percent in the first quarter, the fastest rate of first-quarter growth since 1991.

The growth in residential construction is even higher by the *number* rather than

value of permits. Table E-2 reports the number of single family units authorized grew by 38.7 percent from the first quarter of 1999 through the first quarter of 2000. This was the largest increase since the first quarter of 1987. The number of multi-family units also jumped by 63.1 percent over the period (Table E-3).

By county, most of the increase in the value of permits came in Maui County (111.8 percent, Table E-6). Hawaii County also experienced a relatively large 59.0 percent increase in permit values. By contrast, permit values fell in both Honolulu and Kauai counties.

Average sales prices for housing began rising at double-digit rates in the first quarter. Average new and existing single family home prices rose 16.8 percent from the first quarter of 1999 to the first quarter 2000 (Table E-7). Condominium prices increased by 12.0 percent (Table E-8). In both cases, this was the largest first-quarter increase since 1990.

The number of real estate sales and resales has risen at double-digit rates since the second half of 1997 to the third quarter of 1999. In the first quarter, single-family home sales and resales increased a small 0.4 percent compared to the year-earlier quarter (Table E-9). But condominium sales and resales grew by 22.6 percent.

State government construction activity also contributed to economic growth in the first quarter. State capital improvement project (CIP) expenditures rose by 20.9 percent in the first quarter 2000 relative to the first quarter of 1999 (Table E-11).

**Table E-1. ESTIMATED VALUE OF COMPLETED CONSTRUCTION,
NEW PRIVATE BUILDING AUTHORIZATIONS, AND
GOVERNMENT CONTRACTS AWARDED**

Year	Contracting tax base 1/	Private Building Authorization				Government Contracts Awarded
		Total Private Authorizations	Residential	Commercial & Industrial 2/	Additions & Alterations	
In Millions of Dollars						
1982	1,294.9	683.1	299.2	242.9	141.1	391.6
1983	1,353.4	685.2	296.2	203.2	185.9	275.0
1984	1,242.9	581.5	327.7	104.0	149.9	388.7
1985	1,367.7	888.9	500.1	208.8	180.1	248.9
1986	1,808.0	1,025.2	455.5	267.4	302.3	422.7
1987	2,003.1	1,161.9	507.0	344.4	310.5	370.9
1988	2,487.6	1,546.5	689.2	541.2	316.1	665.0
1989	3,112.8	1,882.4	910.7	561.8	409.9	725.2
1990	4,003.7	2,101.8	952.3	698.0	451.5	825.5
1991	4,334.1	2,151.8	1,192.0	556.2	403.7	729.4
1992	4,012.7	1,751.9	811.1	532.3	408.5	1,159.1
1993	3,803.6	1,505.4	742.1	308.0	455.3	651.8
1994	3,322.3	1,612.9	849.3	370.3	393.4	693.0
1995	3,133.5	1,531.3	745.5	368.3	417.5	490.2
1996	3,285.1	1,117.8	487.0	252.8	378.0	885.5
1997	2,944.4	1,179.2	542.5	264.5	372.2	615.6
1998	3,016.0	1,054.3	485.5	205.6	363.2	685.5
1999	2,991.2	1,367.6	647.4	257.7	411.8	584.8
1997 1 Qtr.	685.9	258.9	88.4	72.8	97.8	181.8
2 Qtr.	777.1	425.6	220.8	93.6	111.9	121.6
3 Qtr.	734.1	266.0	132.8	46.8	86.3	200.9
4 Qtr.	747.3	228.7	100.5	51.3	76.2	111.3
1998 1 Qtr.	757.1	260.4	118.2	50.3	91.9	155.3
2 Qtr.	706.3	246.7	121.3	48.5	76.9	127.5
3 Qtr.	793.6	296.0	123.5	55.1	117.3	218.7
4 Qtr.	759.0	251.3	122.6	51.7	77.0	183.5
1999 1 Qtr.	732.1	342.9	141.6	125.0	76.3	177.3
2 Qtr.	737.0	314.3	153.4	72.4	88.5	104.6
3 Qtr.	758.1	314.1	151.1	63.9	99.0	147.1
4 Qtr.	764.0	426.9	201.7	58.1	167.0	155.8
2000 1 Qtr.	877.6	371.6	208.8	51.7	111.1	217.1

First Hawaiian Bank has discontinued compiling Government Contracts Awarded. Hawaii State Department of Business, Economic Development & Tourism has compiled preliminary estimates beginning with the fourth quarter 1997 based on data in *Building Industry*.

1/ Formerly, this category was "Value of Construction Completed", subject to revision by Hawaii State Department of Taxation.

2/ Includes hotels.

Source: Hawaii State Department of Taxation; F. W. Dodge; county building departments; First Hawaiian Bank;

Building Industry (various issues) and tabulations by Hawaii State Department of Business, Economic Development & Tourism.

**Table E-1. ESTIMATED VALUE OF COMPLETED CONSTRUCTION,
NEW PRIVATE BUILDING AUTHORIZATIONS, AND
GOVERNMENT CONTRACTS AWARDED - Con.**

Year	Contracting tax base 1/	Private Building Authorization				Government
		Total Private Authorizations	Residential	Commercial & Industrial 2/	Additions & Alterations	Contracts Awarded
Percentage Change from the Same Period in Previous Year						
1982	-19.8	-14.8	-24.9	0.9	-13.4	-8.8
1983	4.5	0.3	-1.0	-16.3	31.8	-29.8
1984	-8.2	-15.1	10.6	-48.8	-19.4	41.3
1985	10.0	52.9	52.6	100.8	20.1	-36.0
1986	32.2	15.3	-8.9	28.1	67.9	69.8
1987	10.8	13.3	11.3	28.8	2.7	-12.3
1988	24.2	33.1	35.9	57.1	1.8	79.3
1989	25.1	21.7	32.1	3.8	29.7	9.1
1990	28.6	11.7	4.6	24.2	10.1	13.8
1991	8.3	2.4	25.2	-20.3	-10.6	-11.6
1992	-7.4	-18.6	-32.0	-4.3	1.2	58.9
1993	-5.2	-14.1	-8.5	-42.1	11.5	-43.8
1994	-12.7	7.1	14.4	20.2	-13.6	6.3
1995	-5.7	-5.1	-12.2	-0.5	6.1	-29.3
1996	4.8	-27.0	-34.7	-31.4	-9.5	80.6
1997	-10.4	5.4	11.4	4.4	-1.5	-30.5
1998	2.4	-10.5	-10.5	-22.1	-2.4	11.4
1999	-0.8	29.7	33.3	25.3	13.4	-14.7
1997 1 Qtr.	-16.8	-7.7	-25.3	-7.2	16.8	-43.1
2 Qtr.	-4.6	58.7	122.5	49.8	5.0	55.9
3 Qtr.	-12.5	-24.5	-25.3	-27.7	-21.4	-37.9
4 Qtr.	-7.5	5.8	10.1	8.7	-5.8	-32.3
1998 1 Qtr.	10.4	0.6	33.7	-30.9	-6.0	-14.6
2 Qtr.	-9.1	-42.0	-45.1	-48.2	-30.8	4.8
3 Qtr.	8.1	11.3	-7.0	17.7	35.9	8.9
4 Qtr.	1.6	10.2	22.1	0.7	1.0	64.9
1999 1 Qtr.	3/ -3.3	31.7	19.8	148.5	-17.0	14.1
2 Qtr.	3/ 4.3	27.4	26.5	49.2	15.1	-18.0
3 Qtr.	3/ -4.5	6.1	22.3	16.0	-15.6	-32.8
4 Qtr.	3/ 0.7	69.9	64.5	12.4	116.9	-15.1
2000 1 Qtr.	19.9	8.4	47.5	-58.6	45.6	22.5

First Hawaiian Bank has discontinued compiling Government Contracts Awarded. Hawaii State Department of Business, Economic Development & Tourism has compiled preliminary estimates beginning with the fourth quarter 1997 based on data in *Building Industry*.

1/ Formerly, this category was "Value of Construction Completed", subject to revision by Hawaii State Department of Taxation.

2/ Includes hotels.

3/ Subject to revision by Hawaii State Department of Taxation.

Source: Hawaii State Department of Taxation; F. W. Dodge; county building departments; First Hawaiian Bank; *Building Industry* (various issues) and tabulations by Hawaii State Department of Business, Economic Development & Tourism.

Table E-2. SINGLE FAMILY UNITS AUTHORIZED

<i>Year</i>	<i>First Quarter</i>	<i>Second Quarter</i>	<i>Third Quarter</i>	<i>Fourth Quarter</i>	<i>Annual</i>
Number of Units					
1982	472	536	626	651	2,285
1983	896	952	862	707	3,417
1984	1,092	1,324	1,115	911	4,442
1985	796	1,236	1,644	1,269	4,945
1986	925	1,227	1,309	1,195	4,656
1987	1,523	1,639	1,429	1,475	6,066
1988	1,323	1,767	2,096	1,114	6,300
1989	1,474	1,620	1,993	1,777	6,864
1990	1,922	1,476	1,132	1,472	6,002
1991	1,094	1,010	1,303	1,419	4,826
1992	1,317	1,058	1,388	816	4,579
1993	1,147	1,311	1,064	1,228	4,750
1994	961	963	1,426	1,226	4,576
1995	796	1,138	1,180	778	3,892
1996	756	630	880	540	2,806
1997	533	757	784	628	2,702
1998	679	742	748	785	2,954
1999	716	858	776	986	3,336
2000	993	(NA)	(NA)	(NA)	(NA)
Percentage Change from the Same Period in Previous Year					
1982	-39.1	-23.1	-1.9	20.8	-13.7
1983	89.8	77.6	37.7	8.6	49.5
1984	21.9	39.1	29.4	28.9	30.0
1985	-26.6	-6.6	47.4	39.3	11.5
1986	15.3	-0.8	-17.6	-5.8	-5.1
1987	64.6	33.7	5.5	23.4	29.1
1988	-13.1	7.8	46.7	-24.5	3.7
1989	11.4	-8.3	-4.9	59.5	9.0
1990	30.4	-8.9	-43.2	-17.2	-12.5
1991	-43.1	-31.6	15.1	-3.6	-19.6
1992	20.4	4.8	6.5	-42.5	-5.2
1993	-12.9	23.9	-23.3	50.5	3.8
1994	-16.2	-26.5	34.0	-0.2	-3.7
1995	-17.2	18.2	-17.3	-36.5	-14.9
1996	-5.0	-44.6	-25.4	-30.6	-27.9
1997	-29.5	20.2	-10.9	16.3	-3.7
1998	27.4	-2.0	-4.6	25.0	9.3
1999	5.5	15.6	3.7	25.6	12.9
2000	38.7	(NA)	(NA)	(NA)	(NA)

NA Not available.

Source: County building departments.

Table E-3. MULTI-FAMILY UNITS AUTHORIZED

<i>Year</i>	<i>First Quarter</i>	<i>Second Quarter</i>	<i>Third Quarter</i>	<i>Fourth Quarter</i>	<i>Annual</i>
Number of Units					
1982	313	182	1,831	2,268	4,594
1983	11	158	1,058	104	1,331
1984	61	331	134	495	1,021
1985	1,151	696	345	312	2,504
1986	1,247	299	509	424	2,479
1987	488	567	99	305	1,459
1988	428	702	528	935	2,593
1989	309	1,501	664	457	2,931
1990	495	690	349	1,138	2,672
1991	2,330	973	764	736	4,803
1992	520	484	1,219	517	2,740
1993	272	556	1,120	476	2,424
1994	427	974	630	774	2,805
1995	1,290	290	874	192	2,646
1996	220	108	469	312	1,109
1997	97	655	152	204	1,108
1998	129	46	155	72	402
1999	103	173	260	410	946
2000	168	(NA)	(NA)	(NA)	(NA)
Percentage Change from the Same Period in Previous Year					
1982	-57.8	-90.3	347.7	1,889.5	46.2
1983	-96.5	-13.2	-42.2	-95.4	-71.0
1984	454.5	109.5	-87.3	376.0	-23.3
1985	1,786.9	110.3	157.5	-37.0	145.2
1986	8.3	-57.0	47.5	35.9	-1.0
1987	-60.9	89.6	-80.6	-28.1	-41.1
1988	-12.3	23.8	433.3	206.6	77.7
1989	-27.8	113.8	25.8	-51.1	13.0
1990	60.2	-54.0	-47.4	149.0	-8.8
1991	370.7	41.0	118.9	-35.3	79.8
1992	-77.7	-50.3	59.6	-29.8	-43.0
1993	-47.7	14.9	-8.1	-7.9	-11.5
1994	57.0	75.2	-43.8	62.6	15.7
1995	202.1	-70.2	38.7	-75.2	-5.7
1996	-82.9	-62.8	-46.3	62.5	-58.1
1997	-55.9	506.5	-67.6	-34.6	-0.1
1998	33.0	-93.0	2.0	-64.7	-63.7
1999	-20.2	276.1	67.7	469.4	135.3
2000	63.1	(NA)	(NA)	(NA)	(NA)

NA Not available.

Source: County building departments.

**Table E-4. HONOLULU CONSTRUCTION COST INDEX:
SINGLE FAMILY RESIDENCE**

<i>Year</i>	<i>First Quarter</i>	<i>Second Quarter</i>	<i>Third Quarter</i>	<i>Fourth Quarter</i>	<i>Annual</i>
Index Numbers January 1992 = 100					
1982	65.4	64.5	65.0	66.3	65.3
1983	69.6	71.0	72.4	73.1	71.5
1984	74.7	74.3	74.5	75.0	74.6
1985	76.1	75.7	77.6	77.2	76.6
1986	78.5	78.1	79.1	81.5	79.3
1987	80.9	81.3	82.5	83.6	82.1
1988	86.7	85.4	86.6	88.0	86.7
1989	89.5	90.5	90.3	91.5	90.5
1990	91.6	92.5	97.3	99.0	95.1
1991	98.6	97.7	98.3	99.1	98.4
1992	101.5	102.7	103.1	103.3	102.7
1993	108.2	114.9	112.2	110.6	111.5
1994	118.4	124.3	121.6	120.5	121.2
1995	117.6	117.8	118.3	119.3	118.2
1996	120.7	122.5	129.3	129.6	125.5
1997	128.1	129.2	130.2	129.7	129.3
1998	129.3	129.2	129.1	129.0	129.0
1999	129.7	131.0	128.7	129.8	129.8
2000	132.1	(NA)	(NA)	(NA)	(NA)
Percentage Change from the Same Period in Previous Year					
1982	6.2	5.2	3.3	3.8	4.6
1983	6.4	10.1	11.4	10.3	9.5
1984	7.3	4.6	2.9	2.6	4.3
1985	1.9	1.9	4.2	2.9	2.7
1986	3.2	3.2	1.9	5.6	3.5
1987	3.1	4.1	4.3	2.6	3.5
1988	7.2	5.0	5.0	5.3	5.6
1989	3.2	6.0	4.3	4.0	4.4
1990	2.3	2.2	7.8	8.2	5.1
1991	7.6	5.6	1.0	0.1	3.5
1992	2.9	5.1	4.9	4.2	4.4
1993	6.6	11.9	8.8	7.1	8.6
1994	9.4	8.2	8.4	9.0	8.7
1995	-0.7	-5.2	-2.7	-1.0	-2.4
1996	2.7	4.0	9.3	8.7	6.1
1997	6.1	5.4	0.7	0.1	3.0
1998	0.9	0.0	-0.8	-0.5	-0.2
1999	0.3	1.4	-0.3	0.6	0.6
2000	1.9	(NA)	(NA)	(NA)	(NA)

First Hawaiian Bank has discontinued the update of this index. The Hawaii State Department of Business, Economic Development & Tourism has compiled preliminary estimates beginning with the 1997 fourth quarter and is reviewing the index with the expectation of continuing it.

Source: First Hawaiian Bank and Hawaii State Department of Business, Economic Development & Tourism.

**Table E-5. HONOLULU CONSTRUCTION COST INDEX:
HIGH-RISE BUILDING**

<i>Year</i>	<i>First Quarter</i>	<i>Second Quarter</i>	<i>Third Quarter</i>	<i>Fourth Quarter</i>	<i>Annual</i>
Index Numbers January 1992 = 100					
1982	67.0	66.1	66.7	68.6	67.1
1983	71.4	71.0	71.7	72.7	71.7
1984	75.0	73.9	74.1	74.6	74.4
1985	76.2	75.0	76.7	76.8	76.2
1986	78.5	77.4	78.1	79.5	78.4
1987	80.3	81.0	81.3	81.3	81.0
1988	84.7	83.4	84.3	86.0	84.6
1989	88.1	89.1	89.2	91.0	89.4
1990	90.8	92.0	98.5	100.2	95.4
1991	99.6	98.7	99.6	99.0	99.2
1992	99.7	98.5	99.6	100.0	99.4
1993	102.7	103.3	104.0	105.8	103.9
1994	107.7	109.1	109.6	113.2	109.9
1995	113.5	113.5	114.2	115.3	114.1
1996	115.8	116.0	117.4	118.3	116.9
1997	118.3	119.8	119.8	119.3	119.3
1998	119.3	119.3	119.4	119.4	119.4
1999	120.0	121.2	121.9	121.1	121.1
2000	122.7	(NA)	(NA)	(NA)	(NA)
Percentage Change from the Same Period in Previous Year					
1982	9.7	6.8	5.9	6.0	7.0
1983	6.6	7.4	7.5	6.0	6.9
1984	5.0	4.1	3.3	2.6	3.8
1985	1.6	1.5	3.5	2.9	2.4
1986	3.0	3.2	1.8	3.5	2.9
1987	2.3	4.7	4.1	2.3	3.3
1988	5.5	3.0	3.7	5.8	4.4
1989	4.0	6.8	5.8	5.8	5.7
1990	3.1	3.3	10.4	10.1	6.7
1991	9.7	7.3	1.1	-1.2	4.0
1992	0.1	-0.2	0.0	1.0	0.2
1993	3.0	4.9	4.4	5.8	4.5
1994	4.9	5.6	5.4	7.0	5.8
1995	5.4	4.1	4.2	1.8	3.9
1996	2.0	2.1	2.7	2.6	2.4
1997	2.1	3.3	2.1	0.8	2.1
1998	0.9	-0.4	-0.3	0.1	0.1
1999	0.6	1.6	2.1	1.4	1.4
2000	2.3	(NA)	(NA)	(NA)	(NA)

First Hawaiian Bank has discontinued the update of this index. The Hawaii State Department of Business, Economic Development & Tourism has compiled preliminary estimates beginning with the 1997 fourth quarter and is reviewing the index with the expectation of continuing it.

Source: First Hawaiian Bank and Hawaii State Department of Business, Economic Development & Tourism.

**Table E-6. ESTIMATED VALUE OF PRIVATE BUILDING
CONSTRUCTION AUTHORIZATIONS, BY COUNTY**

<i>Year</i>	<i>State</i>	<i>City & County of Honolulu</i>	<i>Hawaii County</i>	<i>Kauai County</i>	<i>Maui County</i>
In Thousands of Dollars					
1982	683,124	473,009	75,175	44,237	90,703
1983	685,205	366,828	86,653	140,456	91,269
1984	581,497	378,299	90,349	53,010	59,839
1985	888,935	525,322	121,442	63,627	178,543
1986	1,023,476	545,558	231,499	92,498	153,920
1987	1,161,897	749,472	145,157	103,481	163,786
1988	1,546,474	743,056	181,228	213,678	408,508
1989	1,882,397	1,048,284	338,060	178,689	317,364
1990	2,101,767	998,921	429,964	238,968	433,916
1991	2,151,849	1,462,676	369,454	118,547	201,174
1992	1,751,871	1,060,700	379,158	111,098	200,916
1993	1,496,486	959,041	248,236	86,032	203,177
1994	1,612,899	1,073,264	181,059	164,681	193,894
1995	1,531,317	980,703	267,108	78,918	204,588
1996	1,117,760	698,697	171,017	101,981	146,065
1997	1,179,182	772,825	155,776	97,808	152,773
1998	1,054,281	624,227	178,220	88,196	163,640
1/ 1999	1,367,631	753,771	243,852	140,846	229,162
1997 1 Qtr.	258,945	161,998	46,425	18,804	31,718
2 Qtr.	425,581	304,938	37,857	39,815	42,972
3 Qtr.	265,963	172,276	35,952	17,637	40,098
4 Qtr.	228,693	133,613	35,543	21,552	37,985
1998 1 Qtr.	260,420	162,674	52,080	19,545	26,121
2 Qtr.	246,651	137,077	46,215	21,988	41,371
3 Qtr.	295,956	176,140	40,589	22,169	57,058
4 Qtr.	251,256	148,336	39,335	24,494	39,091
1999 1 Qtr.	342,875	209,028	50,412	37,397	46,038
2 Qtr.	314,335	166,196	50,185	28,112	69,842
3 Qtr.	314,044	148,771	50,609	48,550	66,114
1/ 4 Qtr.	396,376	229,775	92,646	26,787	47,167
2000 1 Qtr.	371,575	161,444	80,178	32,445	97,507

1/ Honolulu building permits have been revised for 4th Quarter 1999.
Source: County building departments.

Table E-6. ESTIMATED VALUE OF PRIVATE BUILDING CONSTRUCTION AUTHORIZATIONS, BY COUNTY - Con.

<i>Year</i>	<i>State</i>	<i>City & County of Honolulu</i>	<i>Hawaii County</i>	<i>Kauai County</i>	<i>Maui County</i>
Percentage Change From The Same Period in Previous Year					
1982	-14.8	4.2	-44.9	-34.6	-36.9
1983	0.3	-22.4	15.3	217.5	0.6
1984	-15.1	3.1	4.3	-62.3	-34.4
1985	52.9	38.9	34.4	20.0	198.4
1986	15.1	3.9	90.6	45.4	-13.8
1987	13.5	37.4	-37.3	11.9	6.4
1988	33.1	-0.9	24.8	106.5	149.4
1989	21.7	41.1	86.5	-16.4	-22.3
1990	11.7	-4.7	27.2	33.7	36.7
1991	2.4	46.4	-14.1	-50.4	-53.6
1992	-18.6	-27.5	2.6	-6.3	-0.1
1993	-14.6	-9.6	-34.5	-22.6	1.1
1994	7.8	11.9	-27.1	91.4	-4.6
1995	-5.1	-8.6	47.5	-52.1	5.5
1996	-27.0	-28.8	-36.0	29.2	-28.6
1997	5.5	10.6	-8.9	-4.1	4.6
1998	-10.6	-19.2	14.4	-9.8	7.1
1999	29.7	20.8	36.8	59.7	40.0
1997 1 Qtr.	-7.7	-16.1	70.2	-19.9	-13.6
2 Qtr.	58.7	108.6	-42.6	69.5	31.9
3 Qtr.	-24.5	-24.6	-1.2	-55.3	-16.2
4 Qtr.	5.8	2.1	-14.1	38.8	31.1
1998 1 Qtr.	0.6	0.4	12.2	3.9	-17.6
2 Qtr.	-42.0	-55.0	22.1	-44.8	-3.7
3 Qtr.	11.3	2.2	12.9	25.7	42.3
4 Qtr.	9.9	11.0	10.7	13.7	2.9
1999 1 Qtr.	31.7	28.5	-3.2	91.3	76.2
2 Qtr.	27.4	21.2	8.6	27.9	68.8
3 Qtr.	6.1	-15.5	24.7	119.0	15.9
4 Qtr.	57.8	54.9	135.5	9.4	20.7
2000 1 Qtr.	8.4	-22.8	59.0	-13.2	111.8

Source: County building departments.

Table E-7. SINGLE FAMILY SALES AND RESALES: AVERAGE VALUE

<i>Year</i>	<i>First Quarter</i>	<i>Second Quarter</i>	<i>Third Quarter</i>	<i>Fourth Quarter</i>	<i>Annual</i>
Average Sale Price (Dollars)					
1985	164,363	167,519	171,087	176,585	170,724
1986	170,380	179,941	187,834	195,276	185,894
1987	213,128	240,012	258,864	241,167	240,747
1988	303,360	250,925	252,556	275,424	268,854
1989	316,541	331,480	327,780	396,408	344,236
1990	408,517	387,139	408,712	377,595	396,178
1991	371,777	390,291	356,025	338,163	363,685
1992	331,991	334,759	340,132	356,734	340,739
1993	341,237	386,831	354,247	388,215	369,870
1994	359,086	361,415	345,762	358,048	356,028
1995	338,425	357,712	344,011	349,946	347,912
1996	334,057	349,373	344,396	344,597	343,634
1997	323,341	307,723	333,821	320,886	321,746
1998	325,269	339,121	323,368	339,987	332,429
1999	321,606	339,049	329,301	358,355	336,687
2000	375,529	(NA)	(NA)	(NA)	(NA)
Percentage Change from the Same Period in Previous Year					
1986	3.7	7.4	9.8	10.6	8.9
1987	25.1	33.4	37.8	23.5	29.5
1988	42.3	4.5	-2.4	14.2	11.7
1989	4.3	32.1	29.8	43.9	28.0
1990	29.1	16.8	24.7	-4.7	15.1
1991	-9.0	0.8	-12.9	-10.4	-8.2
1992	-10.7	-14.2	-4.5	5.5	-6.3
1993	2.8	15.6	4.1	8.8	8.5
1994	5.2	-6.6	-2.4	-7.8	-3.7
1995	-5.8	-1.0	-0.5	-2.3	-2.3
1996	-1.3	-2.3	0.1	-1.5	-1.2
1997	-3.2	-11.9	-3.1	-6.9	-6.4
1998	0.6	10.2	-3.1	6.0	3.3
1999	-1.1	0.0	1.8	5.4	1.3
2000	16.8	(NA)	(NA)	(NA)	(NA)

NA Not available.

This series consists of sales of new homes and resales that are entered in the Multiple Listing Service

Quarterly data are computed by the Hawaii State Department of Business, Economic Development & Tourism from Prudential-Locations Research Department monthly data.

Source: Prudential-Locations Research Department.

Table E-8. CONDOMINIUM SALES AND RESALES: AVERAGE VALUE

<i>Year</i>	<i>First Quarter</i>	<i>Second Quarter</i>	<i>Third Quarter</i>	<i>Fourth Quarter</i>	<i>Annual</i>
Average Sale Price (Dollars)					
1985	105,081	99,302	102,973	101,032	101,741
1986	110,412	106,906	114,870	114,327	112,275
1987	122,143	130,903	127,341	140,264	130,950
1988	149,992	144,367	140,322	138,803	143,091
1989	160,839	169,081	170,413	190,049	173,059
1990	202,684	229,597	227,485	237,218	222,943
1991	206,626	198,732	200,654	213,474	203,694
1992	215,321	214,717	216,976	203,826	212,951
1993	216,765	212,963	209,638	205,262	210,732
1994	212,137	215,536	205,975	211,909	211,596
1995	217,371	208,071	210,425	198,183	208,441
1996	215,204	199,720	192,585	201,364	201,778
1997	204,790	189,527	177,287	170,449	184,416
1998	191,790	197,395	165,100	168,741	179,613
1999	181,923	184,377	175,613	181,417	180,748
2000	203,691	(NA)	(NA)	(NA)	(NA)
Percentage Change from the Same Period in Previous Year					
1986	5.1	7.7	11.6	13.2	10.4
1987	10.6	22.4	10.9	22.7	16.6
1988	22.8	10.3	10.2	-1.0	9.3
1989	7.2	17.1	21.4	36.9	20.9
1990	26.0	35.8	33.5	24.8	28.8
1991	1.9	-13.4	-11.8	-10.0	-8.6
1992	4.2	8.0	8.1	-4.5	4.5
1993	0.7	-0.8	-3.4	0.7	-1.0
1994	-2.1	1.2	-1.7	3.2	0.4
1995	2.5	-3.5	2.2	-6.5	-1.5
1996	-1.0	-4.0	-8.5	1.6	-3.2
1997	-4.8	-5.1	-7.9	-15.4	-8.6
1998	-6.3	4.2	-6.9	-1.0	-2.6
1999	-5.1	-6.6	6.4	7.5	0.6
2000	12.0	(NA)	(NA)	(NA)	(NA)

NA Not available.

This series consists of sales of new condominiums and townhomes and resales that are entered in the Multiple Listing Service. It does not include apartments.

Quarterly data are computed by the Hawaii State Department of Business, Economic Development & Tourism from Prudential-Locations Research Department monthly data.

Source: Prudential-Locations Research Department.

Table E-9. SINGLE FAMILY SALES AND RESALES: UNITS

<i>Year</i>	<i>First Quarter</i>	<i>Second Quarter</i>	<i>Third Quarter</i>	<i>Fourth Quarter</i>	<i>Annual</i>
Number of Units Sold					
1985	496	766	941	899	3,102
1986	704	711	1,128	1,382	3,925
1987	840	1,225	1,303	1,171	4,539
1988	986	1,172	1,244	1,106	4,508
1989	1,019	1,271	1,304	1,263	4,857
1990	1,209	1,345	1,154	927	4,635
1991	594	967	1,134	856	3,551
1992	753	1,024	906	829	3,512
1993	664	947	902	929	3,442
1994	825	993	932	839	3,589
1995	603	746	836	821	3,006
1996	677	876	888	808	3,249
1997	684	952	1,089	1,034	3,759
1998	904	1,206	1,232	1,304	4,646
1999	1,130	1,543	1,422	1,103	5,198
2000	1,135	(NA)	(NA)	(NA)	(NA)
Percentage Change from the Same Period in Previous Year					
1986	41.9	-7.2	19.9	53.7	26.5
1987	19.3	72.3	15.5	-15.3	15.6
1988	17.4	-4.3	-4.5	-5.6	-0.7
1989	3.3	8.4	4.8	14.2	7.7
1990	18.6	5.8	-11.5	-26.6	-4.6
1991	-50.9	-28.1	-1.7	-7.7	-23.4
1992	26.8	5.9	-20.1	-3.2	-1.1
1993	-11.8	-7.5	-0.4	12.1	-2.0
1994	24.2	4.9	3.3	-9.7	4.3
1995	-26.9	-24.9	-10.3	-2.1	-16.2
1996	12.3	17.4	6.2	-1.6	8.1
1997	1.0	8.7	22.6	28.0	15.7
1998	32.2	26.7	13.1	26.1	23.6
1999	25.0	27.9	15.4	-15.4	11.9
2000	0.4	(NA)	(NA)	(NA)	(NA)

NA Not available.

This series consists of sales of new homes and resales that are entered in the Multiple Listing Service.

Quarterly data are computed by the Hawaii State Department of Business, Economic Development & Tourism from Prudential-Locations Research Department monthly data.

Source: Prudential-Locations Research Department.

Table E-10. CONDOMINIUM SALES AND RESALES: UNITS:

<i>Year</i>	<i>First Quarter</i>	<i>Second Quarter</i>	<i>Third Quarter</i>	<i>Fourth Quarter</i>	<i>Annual</i>
Number of Units Sold					
1985	630	1,090	1,029	1,004	3,753
1986	909	1,006	1,349	1,752	5,016
1987	1,182	1,865	1,961	1,887	6,895
1988	1,740	2,199	2,205	2,032	8,176
1989	1,825	2,265	2,170	2,181	8,441
1990	2,250	2,503	1,944	1,408	8,105
1991	789	1,813	1,443	1,132	5,177
1992	903	1,170	1,183	983	4,239
1993	542	1,141	1,098	1,154	3,935
1994	988	1,298	1,055	904	4,245
1995	746	874	802	773	3,195
1996	674	946	738	768	3,126
1997	769	898	896	993	3,556
1998	913	1,120	1,240	1,199	4,472
1999	1,071	1,530	1,488	1,243	5,332
2000	1,313	(NA)	(NA)	(NA)	(NA)
Percentage Change from the Same Period in Previous Year					
1986	44.3	-7.7	31.1	74.5	33.7
1987	30.0	85.4	45.4	7.7	37.5
1988	47.2	17.9	12.4	7.7	18.6
1989	4.9	3.0	-1.6	7.3	3.2
1990	23.3	10.5	-10.4	-35.4	-4.0
1991	-64.9	-27.6	-25.8	-19.6	-36.1
1992	14.4	-35.5	-18.0	-13.2	-18.1
1993	-40.0	-2.5	-7.2	17.4	-7.2
1994	82.3	13.8	-3.9	-21.7	7.9
1995	-24.5	-32.7	-24.0	-14.5	-24.7
1996	-9.7	8.2	-8.0	-0.6	-2.2
1997	14.1	-5.1	21.4	29.3	13.8
1998	18.7	24.7	38.4	20.7	25.8
1999	17.3	36.6	20.0	3.7	19.2
2000	22.6	(NA)	(NA)	(NA)	(NA)

NA Not available.

This series consists of sales of new condominiums and townhomes and resales that are entered in the Multiple Listing Service. It does not include apartments.

Quarterly data are computed by the Hawaii State Department of Business, Economic Development & Tourism from Prudential-Locations Research Department monthly data.

Source: Prudential-Locations Research Department.

**Table E-11. STATE GOVERNMENT CAPITAL IMPROVEMENT
PROJECT EXPENDITURES**

Year	Total Expenditures	General Obligation Bond 1/	Revenue Bond 2/	General Fund (Cash)	Special Fund	Federal Funds 3/
In Thousands of Dollars						
1990	995,163	248,379	368,502	133,529	79,998	164,755
1991	1,027,189	210,022	326,414	121,108	164,915	204,730
1992	1,323,450	331,720	512,432	138,867	124,605	215,826
1993	1,188,315	472,515	225,431	89,917	147,351	253,101
1994	1,214,487	492,048	327,980	56,662	135,440	202,357
1995	822,327	342,423	77,560	19,672	169,901	212,772
1996	720,580	286,472	66,625	6,719	165,426	195,338
1997	898,496	345,440	220,496	3,181	163,130	166,249
1998	818,181	329,218	199,294	1,963	192,397	95,309
1999	627,360	293,229	35,735	348	212,446	85,602
1997 1 Qtr.	212,152	115,239	14,839	1,006	35,590	45,477
2 Qtr.	274,738	161,702	19,047	939	40,334	52,717
3 Qtr.	125,971	34,096	9,137	648	49,823	32,267
4 Qtr.	285,636	34,404	177,473	588	37,383	35,788
1998 1 Qtr.	125,076	38,848	8,770	670	47,507	29,281
2 Qtr.	457,268	198,419	181,727	684	49,729	26,709
3 Qtr.	135,702	58,909	2,600	252	54,338	19,602
4 Qtr.	100,135	33,042	6,196	357	40,823	19,716
1999 1 Qtr.	136,750	50,300	8,484	54	52,085	25,827
2 Qtr.	236,936	148,156	11,656	87	53,288	23,750
3 Qtr.	137,107	52,297	8,849	50	56,424	19,488
4 Qtr.	116,567	42,477	6,746	157	50,649	16,538
2000 1 Qtr.	165,383	84,846	7,450	172	49,439	23,477
Percent change from corresponding period in previous year						
1990	(NA)	17.9	190.0	(NA)	(NA)	(NA)
1991	3.2	-15.4	-11.4	-9.3	106.1	24.3
1992	28.8	57.9	57.0	14.7	-24.4	5.4
1993	-10.2	42.4	-56.0	-35.2	18.3	17.3
1994	2.2	4.1	45.5	-37.0	-8.1	-20.0
1995	-32.3	-30.4	-76.4	-65.3	25.4	5.1
1996	-12.4	-16.3	-14.1	-65.8	-2.6	-8.2
1997	24.7	20.6	231.0	-52.7	-1.4	-14.9
1998	-8.9	-4.7	-9.6	-38.3	17.9	-42.7
1999	-23.3	-10.9	-82.1	-82.3	10.4	-10.2
1997 1 Qtr.	54.0	199.2	-46.0	-36.8	17.2	14.3
2 Qtr.	11.8	20.9	14.6	-62.1	-0.9	0.7
3 Qtr.	-28.5	-37.6	-10.1	-66.1	-9.4	-40.8
4 Qtr.	77.6	-42.3	1,338.4	-19.7	-5.1	-26.5
1998 1 Qtr.	-41.0	-66.3	-40.9	-33.4	33.5	-35.6
2 Qtr.	66.4	22.7	854.1	-27.2	23.3	-49.3
3 Qtr.	7.7	72.8	-71.5	-61.2	9.1	-39.2
4 Qtr.	-64.9	-4.0	-96.5	-39.2	9.2	-44.9
1999 1 Qtr.	9.3	29.5	-3.3	-91.9	9.6	-11.8
2 Qtr.	-48.2	-25.3	-93.6	-87.3	7.2	-11.1
3 Qtr.	1.0	-11.2	240.3	-80.2	3.8	-0.6
4 Qtr.	16.4	28.6	8.9	-56.0	24.1	-16.1
2000 1 Qtr.	20.9	68.7	-12.2	216.0	-5.1	-9.1

This table is not directly comparable to Contracts Awarded data in Table E
 1/ Consists of general obligation bonds and reimbursable general obligation bond
 2/ Consists of revenue bonds and special purpose revenue bond
 3/ Includes special federal aid: interstate, primary, secondary; and federal fun
 Source: Hawaii State Department of Accounting and General Services, Report 30

F. OTHER INDICATORS

Bankruptcy filings fell again in the first quarter of the year. This marked the fourth consecutive quarter of lower bankruptcy filings and is consistent with other indicators suggesting growth in Hawaii's economy.

Total bankruptcy filings dropped by 14 percent from the first quarter 1999 to the first quarter 2000 (Table F-1).

Most of the decline came in Chapter 7 filings, which involve the liquidation of assets and the discharge of some debt. The number of Chapter 7 filings fell by 16.8 percent over the period.

Chapter 11 filings also declined from 8 in the first quarter of 1999 to 5 in the first

quarter 2000. Chapter 11 filings involve the structuring of repayment plans for companies.

Working in the other direction, Chapter 13 filings were up over the period. Chapter 13 filings increased 21.1 percent from in the first quarter 2000 from the year-earlier period. Chapter 13 bankruptcy allows debtors to workout repayment arrangements with creditors.

The decline in bankruptcy filings in Hawaii has been mirrored by similar declines for the nation as a whole. U.S. bankruptcy filings fell 5.6 percent from the first quarter of 1999 through the first quarter 2000. First calendar quarter U.S. bankruptcy statistics can be found at http://www.uscourts.gov/Press_Releases/press_6092000.pdf

Total Bankruptcy Filings (Chapters 7, 11, 12, and 13)
(percentage change from same period previous year)

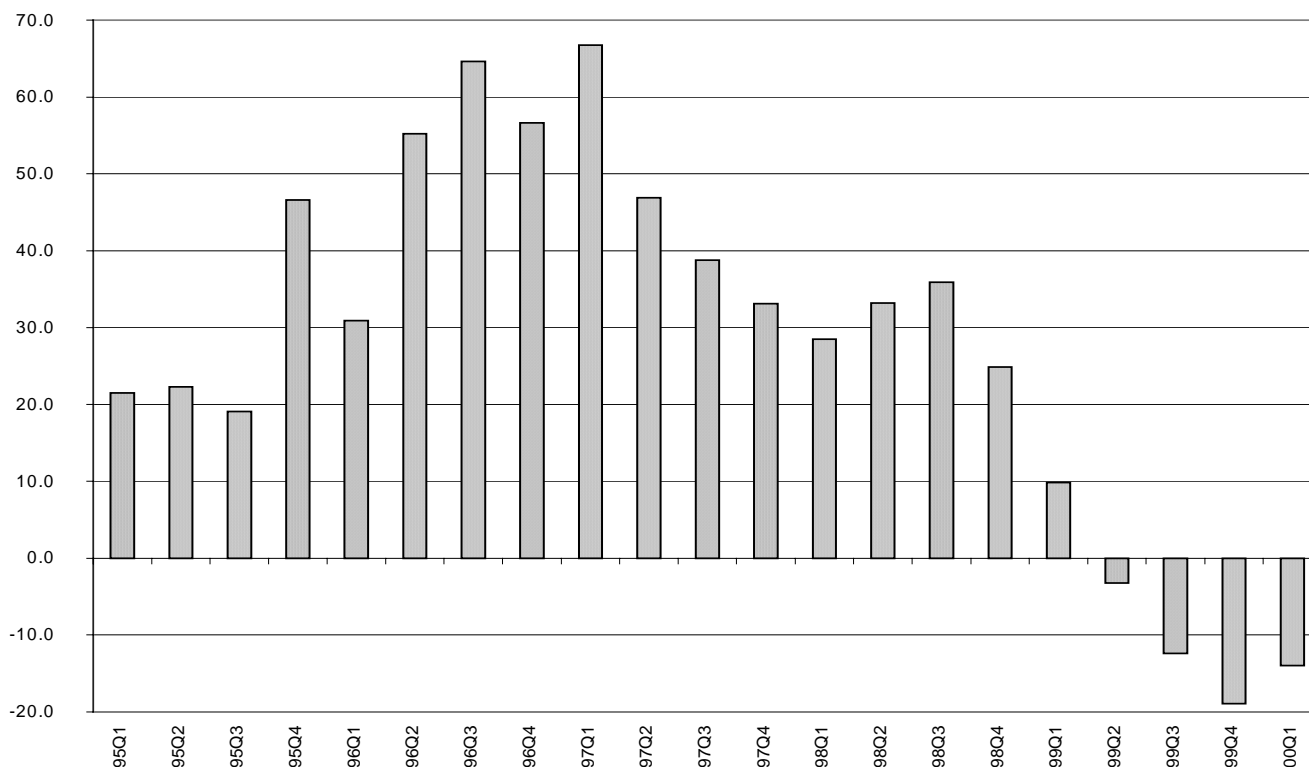


Table F-1. BANKRUPTCY FILINGS

<i>Year</i>	<i>First Quarter</i>	<i>Second Quarter</i>	<i>Third Quarter</i>	<i>Fourth Quarter</i>	<i>Annual</i>
Chapter 7					
1994	336	357	373	362	1,428
1995	414	454	440	534	1,842
1996	530	678	734	829	2,771
1997	863	996	1,004	1,087	3,950
1998	1,122	1,343	1,408	1,393	5,266
1999	1,277	1,329	1,177	1,096	4,879
2000	1,062	(NA)	(NA)	(NA)	(NA)
Chapter 11					
1994	12	19	9	18	58
1995	6	10	10	10	36
1996	12	18	14	8	52
1997	16	11	15	8	50
1998	7	8	4	8	27
1999	8	9	6	6	29
2000	5	(NA)	(NA)	(NA)	(NA)
Chapter 13					
1994	24	23	31	21	99
1995	33	25	39	44	141
1996	51	63	62	84	260
1997	110	108	105	129	452
1998	141	133	116	128	518
1999	109	99	155	138	501
2000	132	(NA)	(NA)	(NA)	(NA)
Total (Chapters 7, 11, 12, 13)					
1994	373	400	413	401	1,587
1995	453	489	492	588	2,022
1996	593	759	810	921	3,083
1997	989	1,115	1,124	1,224	4,452
1998	1,271	1,485	1,528	1,529	5,813
1999	1,396	1,437	1,338	1,240	5,411
2000	1,200	(NA)	(NA)	(NA)	(NA)

NA Not available.

Quarterly data are computed by the Hawaii State Department of Business, Economic Development & Tourism from U.S. Bankruptcy Court for the District of Hawaii monthly data.

Source: U.S. Bankruptcy Court for the District of Hawaii.

Table F-1. BANKRUPTCY FILINGS - Con.

[Percentage change from the same period in previous year]

<i>Year</i>	<i>First Quarter</i>	<i>Second Quarter</i>	<i>Third Quarter</i>	<i>Fourth Quarter</i>	<i>Annual</i>
Chapter 7					
1995	23.2	27.2	18.0	47.5	29.2
1996	28.0	49.3	66.8	55.2	50.4
1997	62.8	46.9	36.8	31.4	42.6
1998	30.0	34.8	40.2	28.2	33.3
1999	13.8	-1.0	-16.4	-21.3	-7.3
2000	-16.8	(NA)	(NA)	(NA)	(NA)
Chapter 11					
1995	-50.0	-47.4	11.1	-44.4	-37.9
1996	100.0	80.0	40.0	-20.0	44.4
1997	33.3	-38.9	7.1	0.0	-3.8
1998	-56.3	-27.3	-73.3	0.0	-46.0
1999	14.3	12.5	50.0	-25.0	7.4
2000	-37.5	(NA)	(NA)	(NA)	(NA)
Chapter 13					
1995	37.5	8.7	25.8	109.5	42.4
1996	54.5	152.0	59.0	90.9	84.4
1997	115.7	71.4	69.4	53.6	73.8
1998	28.2	23.2	10.5	-0.8	14.6
1999	-22.7	-25.6	33.6	7.8	-3.3
2000	21.1	(NA)	(NA)	(NA)	(NA)
Total (Chapters 7, 11, 12, 13)					
1995	21.5	22.3	19.1	46.6	27.4
1996	30.9	55.2	64.6	56.6	52.5
1997	66.8	46.9	38.8	33.1	44.5
1998	28.5	33.2	35.9	24.9	30.6
1999	9.8	-3.2	-12.4	-18.9	-6.9
2000	-14.0	(NA)	(NA)	(NA)	(NA)

NA Not available.

Quarterly data are computed by the Hawaii State Department of Business, Economic Development & Tourism from U.S. Bankruptcy Court for the District of Hawaii monthly data.

Source: U.S. Bankruptcy Court for the District of Hawaii.

III. TERMS AND DEFINITIONS

Agriculture Wage and Salary Jobs – Full- and part-time jobs for which payment was made by the employer in the survey week containing the 12th of the month. Includes farm jobs and machinery operators. Closely related management and services jobs are included for sugar and pineapple but are excluded for other types of agriculture.

Average Daily Visitor Census- By Air – Average number of visitors present daily in the state. Figures are computed monthly by the Research & Economic Analysis Division, DBEDT based on arrival and departure dates from ground and in-flight surveys.

Average Length of Stay- By Air – Number of days visitors are in the State including the day of arrival and of departure.

Bankruptcy Filings –

Chapter 7 – Is available to both individuals and business debtors. Its purpose is to achieve a fair distribution to creditors of whatever non-exempt property the debtor has and to give the individual debtor a fresh start through the discharge in bankruptcy.

Chapter 11 – Is available for both consumer and business debtors. Its purpose is to rehabilitate a business as a going concern or reorganize an individual's finances through a court-approved reorganization plan.

Chapter 12 – Is designed to give special debt relief to a family farmer with regular income from farming.

Chapter 13 – Is available for an individual with regular income whose debts do not exceed specific amounts, typically used to budget some of the debtor's future earnings under a plan through which creditors are paid in whole or in part.

Additional information may be found at the American Bankruptcy Institute "Bankruptcy Chapters" website <http://www.abiworld.org/media/chapters.html>

Civilian Employment – Persons 16 years of age or older who, during the survey week containing the 12th of the month, were either at work for pay or profit, or worked without pay for 15 hours or more on a family farm or business, or were with a job but not at work. Both permanent and temporary employees and those who are working either full- or part-time are included.

Civilian Labor Force – Total of employed and unemployed persons, excluding those in the armed forces and 16 years of age or under. U.S. Census Bureau does surveys for the U.S. Bureau of Labor Statistics.

Civilian Unemployment – Persons 16 years of age or older who (1) did not work at all during the survey week but were actively seeking work and were available for work; or (2) did not work at all, were available for work, and were waiting to be called back from layoff or were waiting to report to a new wage or salary job within 30 days.

Consumer Price Index: Honolulu or U.S. – Measure of the average change in prices over time for a fixed market basket of goods and services. It is compiled by the U.S. Bureau of Labor Statistics. The index measures changes from a reference date, i.e., 1982-84, which is designated as 100.0. For example, a Honolulu CPI-U (where U refers to All Urban Consumers), All Items, of 171.5 as the annual average for 1998 indicates the average prices of that group's basket was 71.5 percent higher than the weighted average of those same goods and services in 1982-84. Data are published monthly for the U.S. and semi-annually for Honolulu. As of January 1998, BLS changed the reference basket based on 1982-84 consumer expenditures to a 1993-95 basket, but the base remains 1982-84 = 100.0. The BLS Internet site has more information about the CPI at <http://stats.bls.gov/cpihome.htm>.

Condominium Sales and Resales: Consists of sales of new condominium and townhomes and resales that are entered in the Multiple Listing Service. It does not include apartments.

Contract Construction Jobs – Jobs held by any person engaged in construction, repairing, erecting, or improving buildings or structures of any type or description, and any installations therein. Such construction includes not only residential and non-residential building projects, both private and public, but also highway and road construction, street and sidewalk construction, repair, excavations, bridges, docks, and other heavy construction projects.

Contracting Tax Base – The total receipts of businesses engaged in contracting to erect, construct, repair, or improve buildings or structures of any kind or description, or to make any installation therein. Attributed to any business engaging in the practice of architecture, engineering, land surveying, landscape architecture, and the practice of pest control or fumigation.

Dividends, Interest, and Rent – U.S. Bureau of Economic Analysis presents the State Personal Income estimates of these components together. It consists of

income received by individuals and on behalf of individuals by private and government employee retirement plans and by quasi-individuals, including non-profit institutions and private trust funds administered by fiduciaries. Personal dividend income is payments in cash or other assets by corporations in the U.S. or abroad to noncorporate stockholders who are Hawaii residents. Personal interest income is the interest income (monetary and imputed) from all sources that is received by individuals, by private and government employee retirement plans, by nonprofit institutions, and by estates and trusts. Rental income of persons with capital consumption adjustment is the net current-production income of persons from the rental of real property except for the income of persons primarily engaged in the real estate business; the imputed net rental income received by owner-occupants of farm-dwellings; and the royalties received by persons from patents, copyrights, and rights to natural resources. The estimates include BEA adjustments for uninsured losses to real estate caused by disasters, such as hurricanes (e.g. Iniki in 1992) and floods. See [Personal Income](#).

Earnings – This BEA aggregate is the sum of three components of personal income: wages and salary disbursements, other labor income, and proprietors' income. BEA presents earnings because it can be used in analyses of regional economies as a proxy for the income generated from participation in current production. See [Personal Income](#).

Federal Government Jobs – Includes those in the civilian agencies, i.e. Department of Defense, Agriculture, United States Postal Service and the various armed services exchange systems.

General Excise (Gross Income) Tax – Tax charged to businesses on gross sales or gross income. The tax rate is 0.5 percent on wholesaling and intermediary services, blind vendors, producing, manufacturing, sugar processing and pineapple canning; all other activities (retailing, business and professional services, contracting, theater, amusement, radio, interest, commissions, rentals) are taxed at 4.0 percent, except insurance commissions to general agents, subagents and solicitors, who are taxed at 0.15 percent.

General Excise and Use Tax Base – The value of all goods and services sold, including the value of tangible personal property imported into Hawaii for own use or consumption. One of the most comprehensive measures of business activity in the state.

General Fund Tax Revenues – Receipts of the general excise and use tax, and net individual and corporate income taxes. The general government fund used to account for all financial resources except those required to be accounted for in another fund, such as the highway, airport or capital improvement fund.

Honolulu Construction Cost Indexes: High-Rise or Single Family – As compiled, by First Hawaiian Bank, and currently by DBEDT, these indexes measure changes in contractors' costs for building materials and labor.

Hotel Jobs – Jobs in hotels, rooming houses, camps, and other lodging places.

Hotel Occupancy Rate – The percentage of occupied rooms in a hotel. Hotel occupancy rates depend not only on the number of visitors and their length of stay, but also on the hotel room inventory, e.g., a large increase in new hotel units results in a drop in occupancy rates, until such time as visitor traffic builds up enough to fill them. Rates are obtained from a sample survey conducted on a monthly basis.

Initial Agent Claims – Notices of unemployment filed against another state by its workers who have moved to Hawaii.

Initial Liable Claims – Notices of unemployment filed against Hawaii by Hawaii workers who have moved to another state.

Local Government Jobs – Includes those in the county governments.

Manufacturing Jobs – Jobs in manufacturing industries, or those activities by any person or establishment that buys materials, performs work on such materials, and changes such materials into a finished or semi-finished product. Includes compounding, canning, preserving, packing, printing, publishing, mailing, processing, refining, or preparing for sale, profit, or commercial use, either directly or through the activity of others, in whole or in part, any article, substance, or commodity such as textiles, apparel, printing, publishing, food processing, and durable goods

Net Earnings – BEA also calculates this measure as Earnings less Personal Contributions for Social Insurance. Net earnings is used in the presentation of State and local area personal income as the sum of net earnings, transfer payments, and personal dividend income, personal interest income, and rental income of

persons. It can be used as a proxy for income before taxes. See [Personal Income](#).

Net Individual or Corporation Income Tax Revenue –

For individuals, it is calculated as declaration of estimated taxes plus payments with returns plus withholding tax on wages less refunds. Net corporate income tax revenue is calculated as declarations of estimated taxes plus payments with returns less refunds.

Non-Agriculture Wage and Salary Jobs –

Derived monthly from a sample survey of employers reporting the number of persons who received pay for any part of the pay period containing the 12th of the month. Includes all full- and part-time non-agricultural workers, permanent and temporary workers, and workers on paid sick leave and paid vacation.

Other Goods and Services –

Honolulu Consumer Price Index component detail. Prior to the CPI 1998 Revision, it measured the change in average prices of tobacco products, personal care goods and services, and personal and educational expenditures. Beginning with January 1998 data, this category includes tobacco, personal care, and miscellaneous goods and services. Other components, for example, schoolbooks and tuition, moved to the new “Education and Communication” and recreational reading to “Recreation”. BLS’ *Monthly Labor Review* (December 1996), and BLS’ Internet site have more information about the CPI at <http://stats.bls.gov/cpihome.htm>.

Other Labor Income –

This component of BEA Personal income consists of employers’ payments to private and government employee retirement plans, private group health and life insurance plans, privately administered workers’ compensation plans, and supplemental unemployment benefit plans; and of several other minor categories, including judicial fees to jurors and witnesses, compensation of prison inmates, and marriage fees to justices of the peace. See [Personal Income](#).

Personal Contributions for Social Insurance –

This BEA aggregate which is subtracted in the calculation of personal income consists of the contributions, or payments, by employees, by the self-employed, and by other individuals who participate in the following government programs: Old-age, survivors, and disability insurance (social security); hospital insurance; supplementary medical insurance; unemployment insurance; railroad retirement; veterans life insurance; and temporary disability insurance. See [Personal Income](#).

Personal Income –

Income received by persons for participation in production, from government and busi-

ness transfer payments, and from government interest (treated like a transfer payment by the Bureau of Economic Analysis). It is calculated as the sum of wage & salary disbursements, other labor income, proprietors’ income with inventory valuation and capital consumption adjustments, rental income of persons with capital consumption adjustment, personal dividend income, personal interest income, and transfer payments to persons, less personal contributions for social insurance. For additional information see [<http://www.bea.doc.gov/bea/regional/spi/index.html>](http://www.bea.doc.gov/bea/regional/spi/index.html)

Proprietors’ Income –

This component of BEA Personal income is the current-production income (including income in kind) of sole proprietorships, partnerships and cooperatives. Corporate directors’ fees and the imputed net rental income of owner-occupants of farm dwellings is included in proprietors’ income but the imputed net rental income of owner-occupants of non-farm dwellings is included in rental income of persons. Proprietors’ income excludes dividends and monetary interest received by nonfinancial business and rental incomes by persons not primarily engaged in the real estate business; these incomes are included in dividends, net interest, and rental income of persons, respectively. See [Personal Income](#).

Retail Trade Jobs –

Jobs in those establishments that are engaged in sales of tangible personal property to the customer for use or consumption and not for resale.

Services Jobs –

Jobs in those activities that are engaged in for other persons for a consideration which involve the rendering of a service as distinguished from the sale of tangible property or the production and sale of tangible property. Includes all professional services.

Single Family Sales and Resales:

Consists of sales of new homes and resales that are entered in the Multiple Listing Service.

State Government Jobs – Education

includes all employees under the Department of Education (DOE) and the University of Hawaii System. This includes public library personnel, substitute teachers who received pay during the pay period including the 12th of the month, and support personnel such as cafeteria workers, classroom cleaners, and school security attendants. Also included are part-time employees in special programs such as the A+ After School Program.

State Government Jobs – Non-Education

- Includes all other executive branch departments (i.e. Agriculture, Transportation, etc.), the legislative and judicial

branches, and the Research Corporation of the University of Hawaii (RCUH).

Transfer Payments – As a component of Personal Income, these are payments for which no current services are performed. It consists of payments to individuals and to nonprofit institutions by Federal, State and local governments and by businesses. Government transfer payments to individuals includes retirement and disability insurance payments (mainly medicare and medicaid), income maintenance benefits, unemployment insurance benefits, veterans benefits, and Federal grants and loans to students. Government transfer payments to nonprofit institutions excludes payments by Federal Government for work under research and development contracts. Business transfer payments to persona for personal injury and of corporate gifts to nonprofit institutions. See [Personal Income](#).

Transient Accommodations Tax – Tax levied on resort time-share vacation units and the furnishing of a room, apartment, suite which is customarily occupied by a person or group for fewer than 180 consecutive days by a hotel, apartment, motel, or cooperative apartment, rooming house, or other place in which lodgings are generally furnished to transients. The tax as of January 1, 1999 is imposed at the rate of 7.25 percent and the tax base includes time-share units.

Unallocated General Excise & Use Tax Revenues – General excise and use tax revenues that could not be allocated to specific activities of the general excise & use tax. It also includes collections from penalty and interest, assessments and corrections, delinquent collections, refunds, protested payments, settlements, etc.

Unemployment Rate – Ratio of unemployed persons to the civilian labor force expressed as a percentage.

Use Tax – Excise tax levied on tangible personal property which is imported or purchased from an unlicensed seller for use in the state. The tax is based upon the purchase price or value of the tangible personal property purchased or imported, whichever is applicable. Rates: 0.5 percent, if for resale at retail; 4.0 percent, if for use or consumption.

Visitor Arrivals- By Air, Total – All persons who stayed in Hawaii for a period between one night and one year.

Domestic Flight Visitor Arrivals – Visitors who stayed in Hawaii for at least one night but less than one year, arriving on flights from Mainland U.S. A foreign resident arriving in Hawaii on a flight directly from the U.S. Mainland is counted as a domestic visitor.

International Flight Visitor Arrivals – Visitors who stayed in Hawaii for at least one night but less than one year arriving on flights from foreign countries. An U.S. resident arriving in Hawaii on a flight directly from a foreign country is counted as an international visitor.

Wages and Salary Disbursements– This component of Personal Income consists of the monetary remuneration of employees, including the compensation of corporate officers; commissions, tips, and bonuses; and receipts in kind, or pay-in-kind, such as the meals furnished to the employees of restaurants. It reflects the amount of wages and salaries disbursed, but not necessarily, earned during the year. See [Personal Income](#).

Wholesale Trade Jobs – Jobs in those establishments whose sales of tangible personal property is to licensed persons for resale or incorporation into a product or project, and sales to certain leasing companies.