

JOANN A. YUKIMURA
MAYOR



STEVE OLIVER
COUNTY ENGINEER
TELEPHONE 245-3318

ARNOLD W.F. LEONG
DEP. COUNTY ENGINEER
TELEPHONE 245-3602

RECEIVED

AN EQUAL OPPORTUNITY EMPLOYER
COUNTY OF KAUAI
DEPARTMENT OF PUBLIC WORKS
3021 UMI STREET
LIHUE, KAUAI, HAWAII 96766
April 1, 1991

'91 APR -4 P1:54

OFFICE OF ENVIRONMENTAL
QUALITY CONTROL

OFFICE OF ENVIRONMENTAL QUALITY CONTROL
220 South King Street, Fourth Floor
Honolulu, HI 96813

Gentlemen:

RE: NOTICE OF DETERMINATION
KALAHEO FIRE STATION
KALAHEO, KAUAI, HAWAII

The County of Kauai has determined that an EIS is not required and files a Negative Declaration for the Kalaheo Fire Station project.

Enclosed are four sets of an Environmental Assessment and the Negative Declaration in support of our determination.

Very truly yours,

STEVE OLIVER
County Engineer

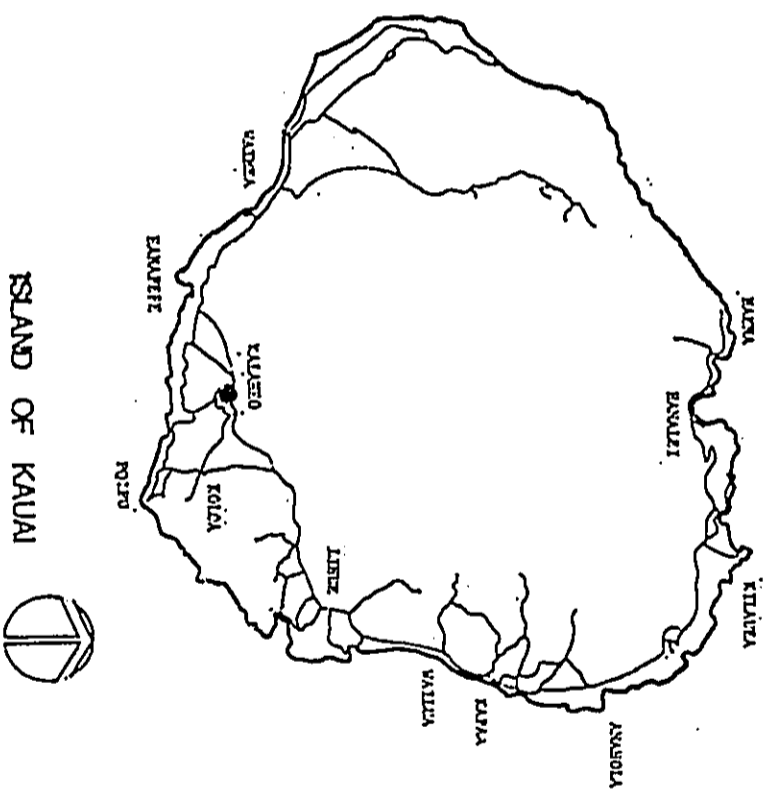
GY:eo

Attachment

47

**ENVIRONMENTAL ASSESSMENT AND
NEGATIVE DECLARATION FOR
FILE COPY**

*** KALAHEO FIRE STATION ***



ISLAND OF KAUAI

PREPARED FOR
THE DEPARTMENT OF PUBLIC WORKS
COUNTY OF KAUAI

1991-04-23-KA-FEA

1100 Ward Avenue
Suite 760
Honolulu, Hawaii 96814
**YAMASATO
FUJIWARA
AOKI & ASSOCIATES**
ARCHITECTURE PLANNING ARCHITECTURAL INTERIORS

ENVIRONMENTAL ASSESSMENT

ENVIRONMENTAL ASSESSMENT

AND

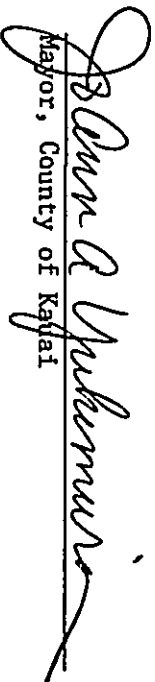
NEGATIVE DECLARATION

FOR THE

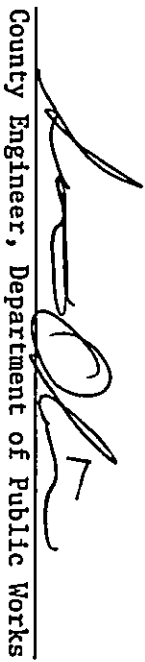
KALAEHO FIRE STATION

Prepared for the
Department of Public Works
County of Kauai

Approved by:



Mayor, County of Kauai



County Engineer, Department of Public Works



Director, Planning Department



Fire Chief, Fire Department

Prepared by:
Yamasato, Fujiwara, Aoki & Associates, Inc.
1100 Ward Avenue, Suite 760
Honolulu, Hawaii 96814

February 1991

CONTENTS

A. PURPOSE	1
B. PROJECT DESCRIPTION	1
1. Site Description	2
2. Project Delineation	2
C. POTENTIAL IMPACTS AND THEIR SIGNIFICANCE	3
1. Flora and Fauna	3
2. Flood Plain and Tsunami.	3
3. Historical and Archaeological.	4
4. Noise Air and Water Quality.	4
a. Traffic	4
b. Noise	5
c. Wastewater.	6
D. ALTERNATIVES.	6
E. DETERMINATION	6
F. REFERENCE	8
1. Agencies Consulted	8
2. Reference Material	8

Environmental Assessment

Kalaheo Fire Station

A. PURPOSE

This assessment is prepared in accordance with Chapter 343, Hawaii Revised Statutes and its related rules and regulations, the purpose of which is to:

1. Identify potential environmental impacts.
2. Evaluate potential significance of each impact.
3. Provide a detail study of major impacts.
4. Determine the need for an Environmental Impact Statement.

B. PROJECT DESCRIPTION

The Kauai County Department of Public Works proposes to construct a new fire station in Kalaheo to replace the existing deteriorated station presently inadequate to support the function and safety of its users.

The existing station is located on Kaunualii Highway, at the Northeast corner of the Kalaheo Multipurpose Recreation Grounds (Exhibits II & III). The new fire station is proposed to be constructed on the same site as the existing station in such a way that the existing station can be utilized until the new station is ready for occupancy (Exhibit IV). The existing station thereupon would be demolished.

1. Site Conditions

The proposed site has the following designations:

County Zoning: Open

County General Plan:

State Land Use: Urban

The above designations permit the development of the proposed project, and its design is to be in conformance with the regulations set forth in the Comprehensive Zoning Ordinance.

The existing station and the site have no known scenic, historical or archaeological significance.

Existing site conditions and proposed development are as shown in Exhibits III & IV respectively.

2. Project Delineation

The spatial and functional needs of the Fire Station which are included in the proposed project's design are as follows:

1. Two Bay Apparatus Room
2. Office
3. Day Room (dining, lounging, study)
4. Kitchen
5. Bedroom
6. Toilet & Showers
7. Locker area.

8. Utility Room
9. Tool Storage
10. Hose Drying Rack
11. 1,000 gal. fuel tank and pump.
12. Employee Parking
13. Traffic Warning beacon.

Also included will be a solar heating system, landscaping and a flag pole. Utilities such as water electricity and telephone are readily available. Wastewater disposal is evaluated in "Potential Impacts and Their Significance - Noise, Air and Water Quality".

C. POTENTIAL IMPACTS AND THEIR SIGNIFICANCE

1. Flora and Fauna

No rare or endangered flora or fauna species will be affected by the construction of this proposed project.

This site is presently grassed with a bougainvillea bush, 2 mango, an avacado and a number of palm trees as shown on Exhibit III. The bougainvillea and palm trees will be salvaged, however the other trees will require removal. Supplemental trees, brush and groundcover will be provided.

2. Flood Plain and Tsunami

The U.S. Corp of Engineers Preliminary Report for the Federal Insurance Administration indicate that the site does not lie within a tsunami or flood zone.

3. Historical and Archaeological

The site has no known historical or archaeological significance.

4. Noise, Air and Water Quality

Temporary, unavoidable adverse impacts will occur during the construction of this project. Mitigating measures will be required by the County to minimize these adverse impacts, such as pollution control, controlled rubbish disposal and dust abatement by sprinklering. Soil run-off is to be minimized by proper grading practices. The U.S. Department of Agriculture Soil Conservation Service lists the soil type of the site to be Puhli clay loam, 8-15% slope with slow runoff and slight erosion hazard.

Operational adverse impacts as traffic, noise and wastewater disposal are presently being generated by the existing fire station with no major significance. An increase in Fire personnel at the station may occur in the future with population and developmental growth. This increase of personnel will be minimal and is anticipated to insignificantly add to the existing conditions. The following evaluates adverse operational impacts.

a) Traffic: The Fire personnel presently total 4 per shift and may increase to 6 per shift in the future. Each shift lasts 24 hours and is changed every 7:00 am. Therefore, a total of 8-12 vehicles are generated by the arrival and departure of personnel around 7:00 each morning.

During each shift, the personnel remain at the station until an emergency call is received, at which time they depart and thereafter return in the fire truck.

Such emergency responses are inconsistent and have averaged approximately 12 times per month. Public visitors are expected to be infrequent.

Adverse impacts associated with traffic are vehicular congestion, exhaust emission and noise. Such adverse impacts have been and are being generated by the existing Fire Station with no major significance. The proposed new Station is not expected to noticeably add to the existing air pollutants and noise level in the vicinity.

b) Noise: In addition to vehicular noise, other noises generated by Station activities are emergency response systems including a traffic beacon and everyday activities comparative to residential activities such as cooking, eating, lounging, exercising and sleeping. The latter everyday activities are not considered of any adverse significance, with the exercise and recreational activities being consistent with and less than noise levels generated by the adjoining park.

Emergency response systems are activated upon receipt of an emergency call. Bells will be actuated at strategic locations within the Station to summon all firemen to the fire truck. Within a few seconds these bells will cease ringing, and upon the truck's departure, a traffic beacon (siren and blinking light) along Kaunualii Highway will be sounded to warn and stop traffic until the truck is safely underway, whereupon the truck's siren will commence.

These emergency responses have not averaged more than 12 per month, are very short in

duration, and are existing in the present Fire Station except for the traffic beacon which will be added for public safety. These systems have existed with no major adverse significance and are expected to remain as such for the proposed new Fire Station.

c) Wastewater: The site and surrounding vicinity are being handled by individual cesspools or septic tanks. Since the proposed new Fire Station should not initially generate additional wastewater greater than that currently being generated by the existing station, and since the future increase of two personnel per shift is not expected to substantially lower the existing health and water quality of the vicinity, the adverse impact of wastewater disposal by this proposed facility is not considered significant.

D. ALTERNATIVES

Alternatives to the proposed action is no action or postponing the action. The existing station would continue to deteriorate and become detrimental to the health, safety and function of its inhabitants.

E. DETERMINATION

The assessment of the potential adverse impacts from this proposed action indicate that there are none of significance upon the quality of the environment. The action would conversely have a beneficial short-term effect on the economy during construction and long-term effect on the social welfare of the area. It is determined that a Negative Declaration is appropriate for this proposed action based upon the above and as follows: The action

1. does not involve an irrevocable commitment or loss or destruction of any natural or cultural resource.
2. does not curtail the range of beneficial use of the environment.
3. does not conflict with the State's long-term environmental policies or goals and guidelines as expressed in Chapters 342 and 344, Hawaii Revised Statutes, and any revisions thereof and amendments thereto, Court decisions or Executive Orders.
4. does not substantially affect the economic or social welfare of the community or State other than beneficially.
5. does not substantially affect economic or sociological activities.
6. does not involve substantial secondary impacts, such as population changes or effects on public facilities.
7. does not involve a substantial degradation of environmental quality.
8. does not have a cumulative effect upon the environment and does not involve a commitment for larger actions.
9. does not substantially affect a rare, threatened or endangered species of animal or plant habitat.
10. does not detrimentally affect air or water quality or ambient noise levels.
11. does not affect an environmentally sensitive area such as a flood plain, tsunami zone, erosion-prone area, geologically hazardous land, estuary, fresh water or coast waters.

F. REFERENCE

1. Agencies Consulted:

U.S. Army Engineer District, Corps of Engineers
State Department of Land and Natural Resources, Division of State Parks, Outdoor Recreation and
Historic Sites
Kauai County Planning Department
Kauai County Fire Department

2. Reference Material:

Preliminary Report by the U.S. Corps of Engineers for the Federal Insurance Administration and
for the County of Kauai

Soil Survey of Islands of Kauai, Oahu, Maui, Molokai and Lanai, State of Hawaii

U.S. Department of Agriculture

Soil Conservation Service in cooperation with the University of Hawaii Agriculture Experiment
Station, August 1972.

NEGATIVE DECLARATION

Negative Declaration

Kalaheo Fire Station

The non-significance of adverse effects as evaluated in the Environmental Assessment is indicative of a Negative Declaration for this proposed action.

The Environmental Assessment indicates that the proposed action:

1. has no significant adverse effects upon flora and fauna.
2. does not lie within a flood zone or tsunami area.
3. has no known archaeological or historical significance.
4. has no significant adverse effects upon the existing noise, air and water quality of the vicinity.
5. will improve the safety, welfare and function of its users.
6. will, by its nature, have a beneficial long term affect upon the social welfare of the area.
7. does not involve an irrevocable commitment or loss or destruction of any natural or cultural resource.
8. does not curtail the range of beneficial use of the environment.
9. does not conflict with the State's long-term environmental policies or goals and guidelines as expressed in Chapters 342 and 344, Hawaii Revised Statutes, and any revisions thereof and amendments thereto, Court decisions or Executive Orders.
10. does not substantially affect the economic or social welfare of the community or State other than beneficially.

11. does not substantially affect the economic or sociological activities.
12. does not involve substantial secondary impacts, such as population changes or effects on public facilities.
13. does not involve a substantial degradation of environmental quality.
14. does not have a cumulative effect upon the environment and does not involve a commitment for larger actions.
15. does not substantially affect a rare, threatened or endangered species of animal or plant or habitat.
16. does not detrimentally affect air or water quality or ambient noise levels.
17. and does not affect an environmentally sensitive area such as a flood plain, tsunami zone, erosion-prone area, geologically hazardous land, estuary, fresh water or coastal waters.

The above affirms the appropriateness of a Negative Declaration for the proposed action.

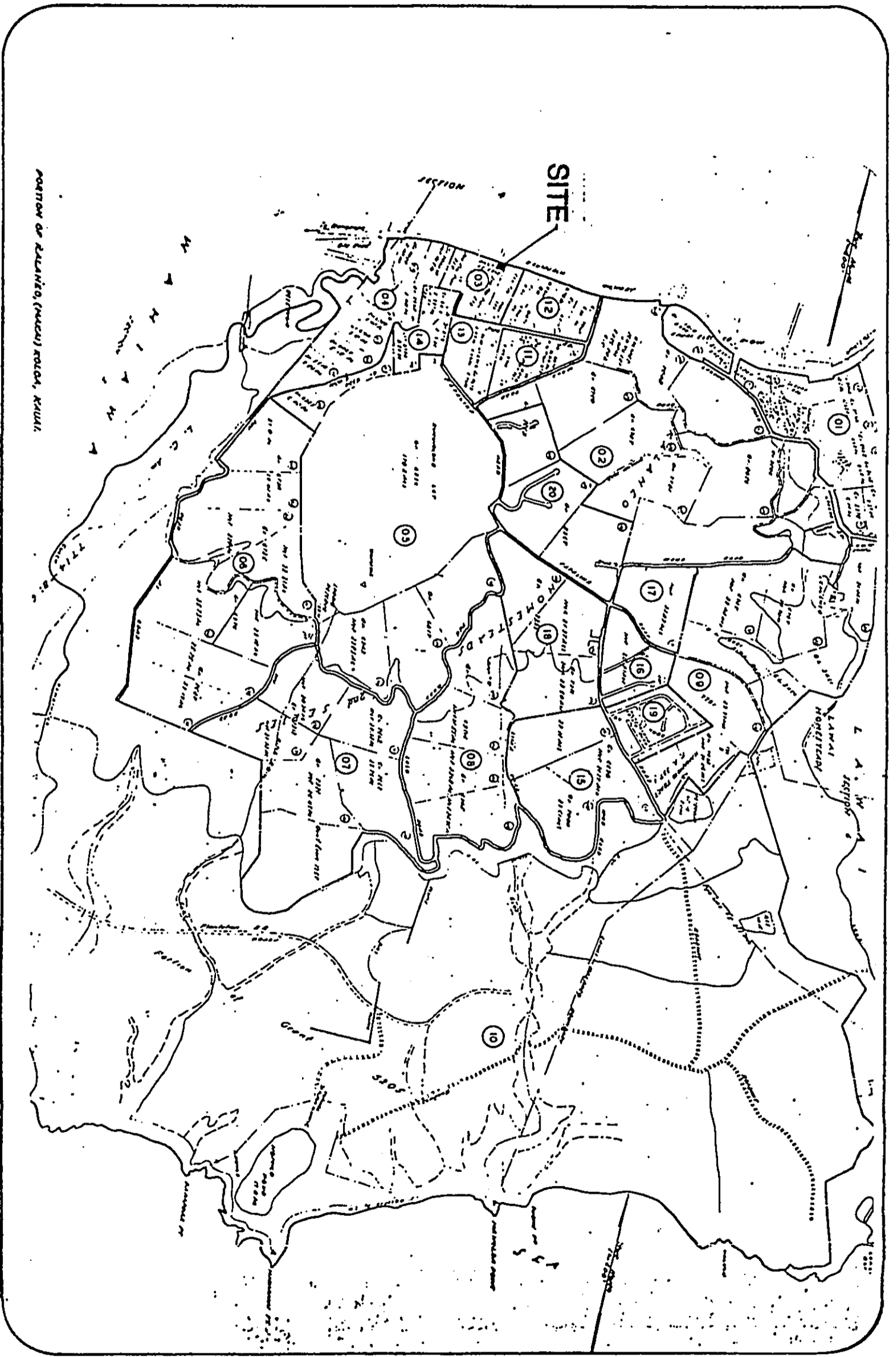
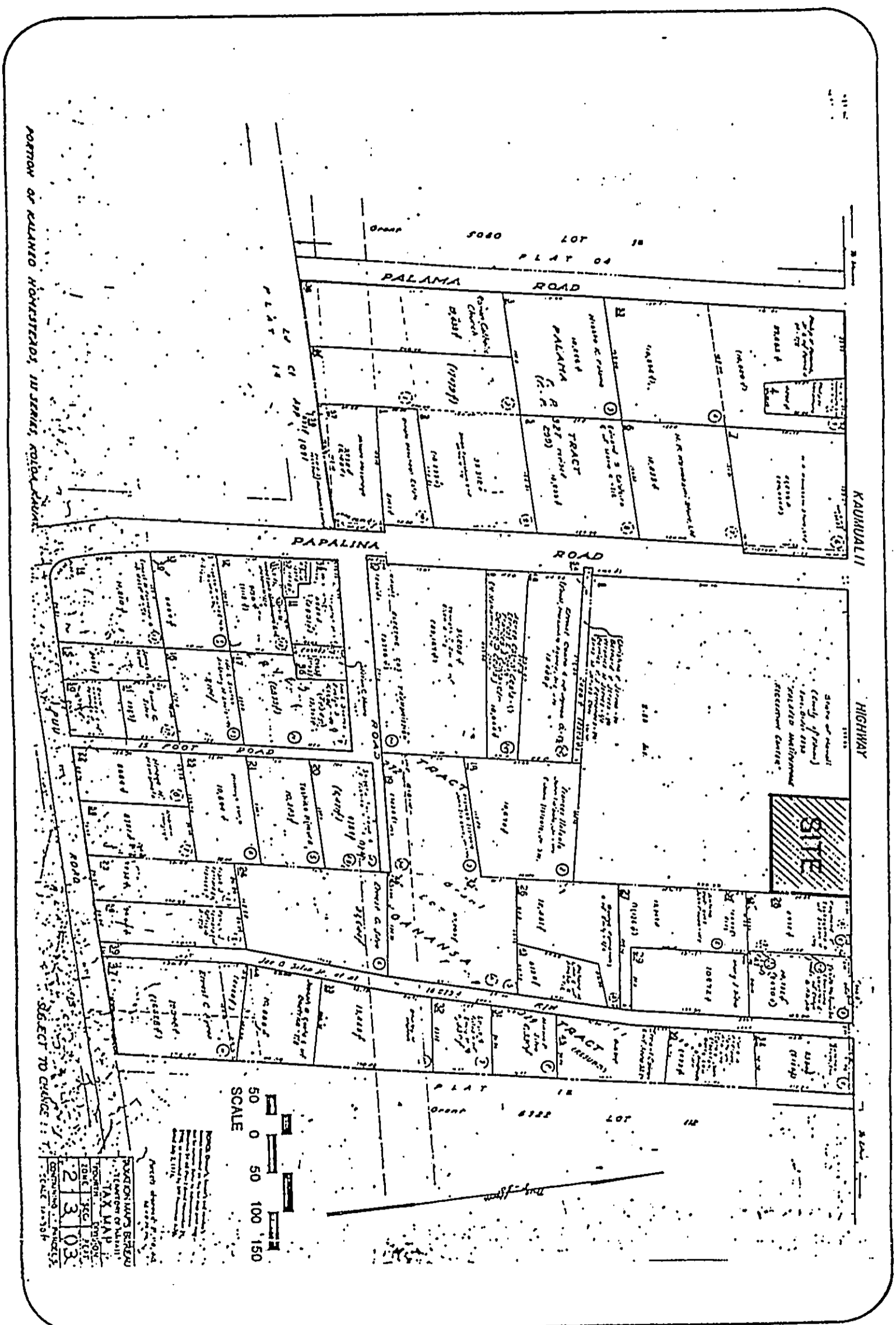


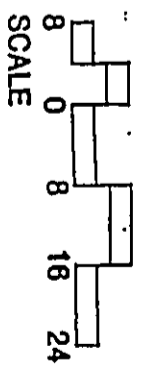
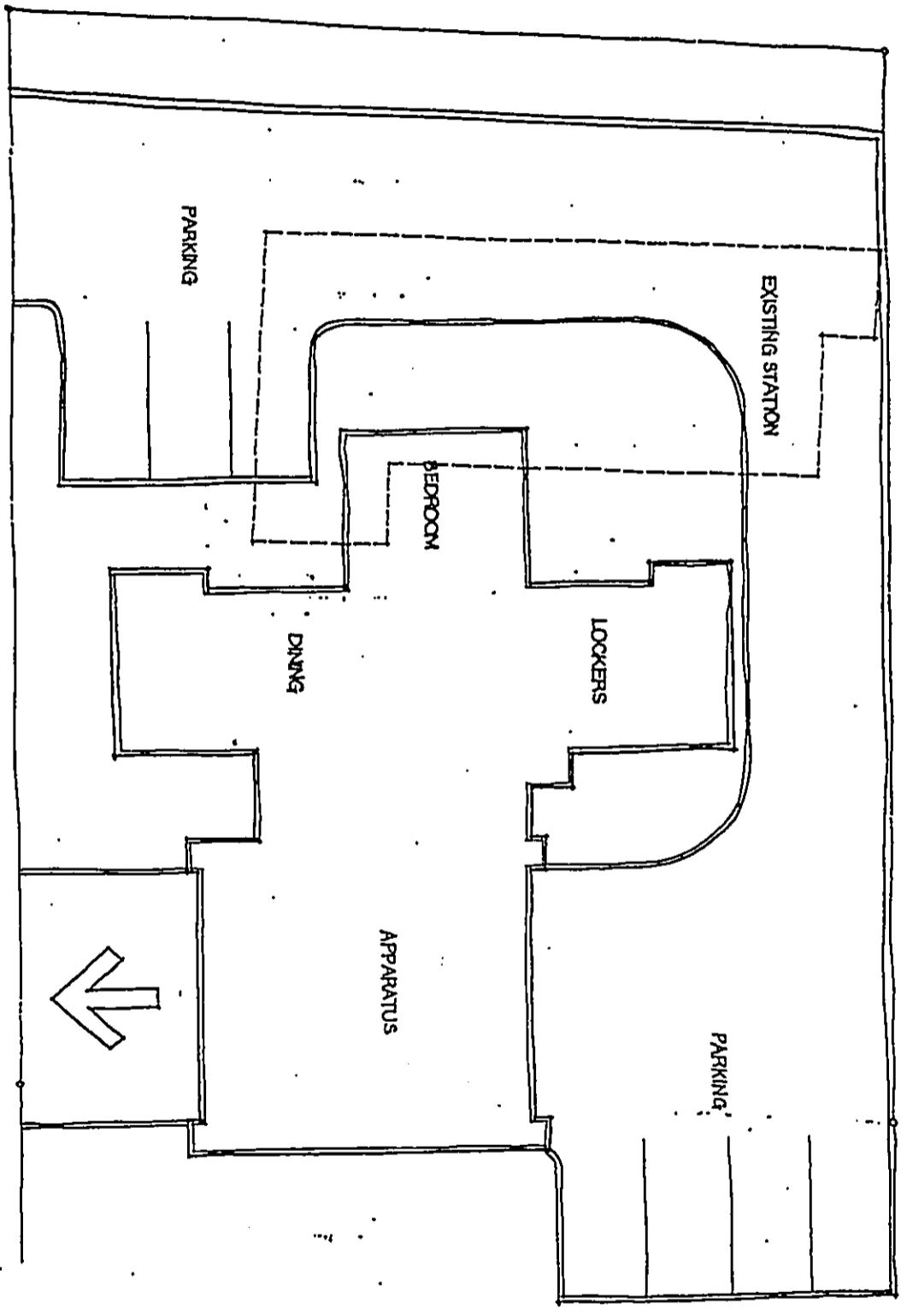
EXHIBIT I

VICINITY MAP





SITE PLAN



KALAHEO