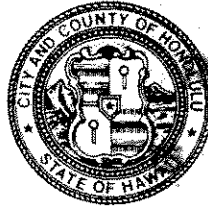


DEPARTMENT OF DESIGN AND CONSTRUCTION
CITY AND COUNTY OF HONOLULU

650 SOUTH KING STREET, 11TH FLOOR
HONOLULU, HAWAII 96813
Phone: (808) 523-4564 • Fax: (808) 523-4567
Web site: www.honolulu.gov

MUFI HANNEMANN
MAYOR



RECEIVED

APR 11 P2:04

WAYNE M. HASHIRO, P.E.
ACTING DIRECTOR

EUGENE C. LEE, P.E.
DEPUTY DIRECTOR

WW.PDW 05-058

UFC. OF ENVIRONMENTAL
QUALITY CONTROL
April 6, 2005

Ms. Genevieve Salmonson, Director
Office of Environmental Quality Control
State of Hawaii
235 South Beretania Street, Suite 702
Honolulu, Hawaii 96813

Dear Ms. Salmonson:

Subject: Saint Louis Heights Sewer System Improvements
Final Environmental Assessment and Finding of No Significant Impact

The City and County of Honolulu, Department of Design and Construction, has reviewed the comments received during the public comment period for the proposed Saint Louis Heights Sewer System Improvements project. We have determined that the impacts associated with this project have been adequately addressed in the Final Environmental Assessment and therefore, are issuing a Finding of No Significant Impact. We request that the proposed project be published as a Finding of No Significant Impact in the next issue of the Environmental Notice.

We have enclosed the following:

- Completed OEQC Bulletin Publication Form.
- Four copies of the Final Environmental Assessment.
- The project summary (electronic version has been emailed to your office).

If you have any questions, please contact Wes Yokoyama at 527-6904.

Very truly yours,

A handwritten signature in cursive script, appearing to read "Eugene C. Lee".

for WAYNE M. HASHIRO, P.E.
Acting Director

Enclosures

cc: Wilson Okamoto Corporation

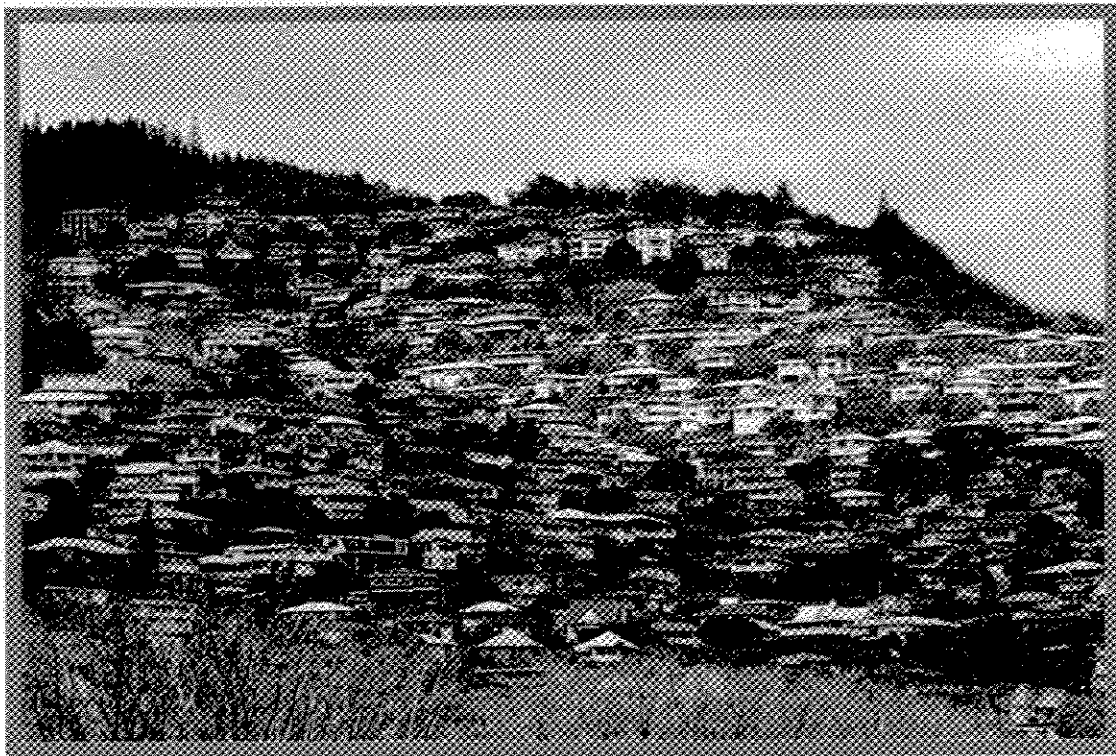
Final Environmental Assessment &
Finding of No Significant Impact

RECEIVED

'05 APR 11 P2:05

SAINT LOUIS HEIGHTS SEWER SYSTEM IMPROVEMENTS

OFFICE OF ENVIRONMENTAL
QUALITY CONTROL



Prepared For
City & County of Honolulu
Department of Design & Construction



Prepared By
Wilson Okamoto Corporation

April 2005

SAINT LOUIS HEIGHTS
SEWER SYSTEM IMPROVEMENTS
FINAL ENVIRONMENTAL ASSESSMENT AND
FINDING OF NO SIGNIFICANT IMPACT

Proposing Agency

City and County of Honolulu
Department of Design and Construction

Prepared By

Wilson Okamoto Corporation
Engineers and Planners
1907 South Beretania Street, Suite 400
Honolulu, Hawaii 96826

April 2005

PREFACE

This Environmental Assessment (EA) has been prepared in accordance with the requirements of Chapter 343, Hawaii Revised Statutes (HRS) for sewer system improvements that the City and County of Honolulu, Department of Design and Construction proposes to undertake at Saint Louis Heights. Many of the sewer pipes in the Saint Louis Heights neighborhood are over 50 years old and rehabilitation or replacement of sewer pipes and manholes is necessary to ensure continued sound operation.

Pursuant to Chapter 343, HRS, the project requires compliance with environmental assessment requirements based on the use of County lands and funds. This EA has been processed as a Finding of No Significant Impact (FONSI) as no significant impacts are anticipated to result from the project.

Table of Contents

	<u>Page</u>
1 Introduction	1-1
2 Setting and Project Description.....	2-1
2.1 Project Location and Setting	2-1
2.2 Project Need	2-1
2.2.1 Pipeline Rehabilitation and Replacement.....	2-1
2.2.2 Manhole Rehabilitation.....	2-4
2.3 Project Description	2-6
2.4 Project Schedule and Cost.....	2-9
3 Description of the Existing Environment, Project Impacts and Mitigation Measures.....	3-1
3.1 Climate.....	3-1
3.2 Geology, Topography and Soils	3-1
3.3 Water Resources	3-2
3.4 Flora and Fauna.....	3-2
3.5 Air Quality.....	3-2
3.6 Noise.....	3-3
3.7 Historic, Archaeological and Cultural Resources	3-3
3.8 Population	3-4
3.9 Infrastructure Systems and Services.....	3-4
3.9.1 Transportation System.....	3-4
3.9.2 Wastewater System	3-5
3.9.3 Drainage System.....	3-5
4 Relationship to Land Use Plans and Policies.....	4-1
4.1 State Land Use Districts.....	4-1
4.2 City and County of Honolulu General Plan.....	4-1
4.3 Primary Urban Center Development Plan	4-2
4.4 Land Use Ordinance	4-3
5 Alternatives to the Proposed Action	5-1
5.1 No Action Alternative.....	5-1
5.2 Alternative Pipe Replacement Methods	5-1
5.3 Alternative Pipe Rehabilitation Methods.....	5-2
5.4 Alternative Manhole Rehabilitation Methods	5-3
6 Required Permits and Approvals	6-1
7 Anticipated Determination.....	7-1
8 Consultation.....	8-1
8.1 Pre-Assessment Consultation	8-1
8.2 Draft Environmental Assessment Consultation	8-2
9 References	9-1

List of Figures

	<u>Page</u>
Figure 2-1 Location Map.....	2-2
Figure 2-2 Development History.....	2-3
Figure 2-3 Proposed Action.....	2-7

List of Tables

	<u>Page</u>
Table 2-1 Structural Assessment Summary	2-5
Table 2-2 Pipeline Action Matrix.....	2-5
Table 2-3 Manhole Action Matrix.....	2-5
Table 2-4 Affected Streets.....	2-6

PROJECT SUMMARY

- Proposing Agency:** City and County of Honolulu
Department of Design and Construction
650 South King Street
Honolulu, Hawaii 96813
- Location:** Saint Louis Heights, Oahu, Hawaii
- Tax Map Key:** Tax Map Key Plats 3-3-050 to 3-3-055;
3-3-057 to 3-3-061; 3-4-031 to 3-4-032
- Recorded Fee Owner:** The sewer pipes and manholes are located within City and County of Honolulu roadways or within easements on private property.
- State Land Use Classification:** Urban
- County Zoning:** R-5 Residential
- Proposed Action:** The City and County of Honolulu, Department of Design and Construction, proposes to replace or rehabilitate sewer pipes and manholes in the Saint Louis Heights neighborhood. Pipe bursting and open trench construction is proposed to be used for pipeline replacement and cured-in-place pipe lining is proposed to be used for pipeline rehabilitation. Coating will be used to rehabilitate manholes.
- Impacts:** Short-term noise, water quality, and traffic impacts may occur during construction. No significant short- or long-term impacts are anticipated.

**Required Permits
& Approvals :**

Grading, Grubbing and Stockpiling Permit
Trenching Permit
Street Usage Permit
Traffic Control Plan
NPDES General Permit
Noise Variance Permit

**Parties Consulted
During
Pre-Assessment
Consultation:**

State of Hawaii

Department of Health (DOH)
DOH, Environmental Management Division
Department of Land & Natural Resources (DLNR)
DLNR, State Historic Preservation Division
Office of Hawaiian Affairs

City & County of Honolulu

Department of Facility Maintenance
Department of Parks and Recreation
Department of Planning & Permitting
Department of Transportation Services
Honolulu Board of Water Supply
Honolulu City Council, Councilmember Ann
Kobayashi
Diamond Head/Kapahulu/Saint Louis Neighborhood
Board No. 5

1 INTRODUCTION

The City and County of Honolulu, Department of Design and Construction, proposes to improve portions of the municipal sewer system at Saint Louis Heights. Saint Louis Heights is a residential neighborhood encompassing about 1,947 acres on Kalaepohaku Ridge between Manoa and Palolo valleys. Most of the sewer pipes in the neighborhood were installed between 1929 and 1953.

The City and County of Honolulu (City) is bound by a May 15, 1995 consent decree between the City and the U.S. Environmental Protection Agency to rehabilitate its sewer system to prevent spills and bypasses. The Saint Louis Heights area has been identified by the City as an area in need of rehabilitation. The Department of Environmental Services Division of Collection System Maintenance has identified lines with a history of spills. Without an unusually high frequency of maintenance, these lines will have further spill incidences. The City's Department of Planning and Permitting has reported that sewer lines in the area are hydraulically surcharged.

The overall objective of the project is to correct current hydraulic and physical deficiencies in the sewer lines in the Saint Louis Heights area. A number of construction methods were evaluated for the proposed sewer improvements. Based on the evaluation, "pipe bursting" is proposed to be used for pipeline replacement and "cured-in-place pipe" lining is proposed to be used for pipeline rehabilitation. Open trench construction may also be used to replace pipe segments if trenchless methods are infeasible. Manholes will be rehabilitated by using "coating" methods.

The project is not anticipated to generate significant long-term adverse impacts. Short-term noise, water quality, and traffic impacts may occur during construction of the improvements.

This Environmental Assessment has been prepared pursuant to Hawaii Revised Statutes (HRS) Chapter 343 due to the use of County lands and funds.

2 SETTING AND PROJECT DESCRIPTION

2.1 Project Location and Setting

The project area encompasses the Saint Louis Heights neighborhood, an approximately 1,947-acre area on Kalaepohaku Ridge in Central Honolulu. The neighborhood overlooks the University of Hawaii, Saint Louis High School and Chaminade University and is located between Manoa and Palolo Valleys. The project site is about 0.5-mile east of the University of Hawaii and 1.5-miles northeast of Waikiki. See Figure 2-1, Location Map.

The Saint Louis Heights neighborhood is best characterized as a mature single-family residential community. There are about 1,250 homes in the neighborhood and most of the homes were constructed prior to 1960. The neighborhood was developed in phases and includes the following developments (date of construction plans in parentheses):

1. Saint Louis Heights Tract (1929)
2. Saint Louis Heights Tract Series II (1949)
3. Saint Louis Heights Tract Series IIA (1951)
4. Saint Louis Heights Tract Series III (1951)
5. Aloha Aina Tract (1953)
6. Chaminade Terrace Unit 1 (1959)
7. Chaminade Terrace Unit 2 (1959)
8. Chaminade Terrace Unit 3 (1960)

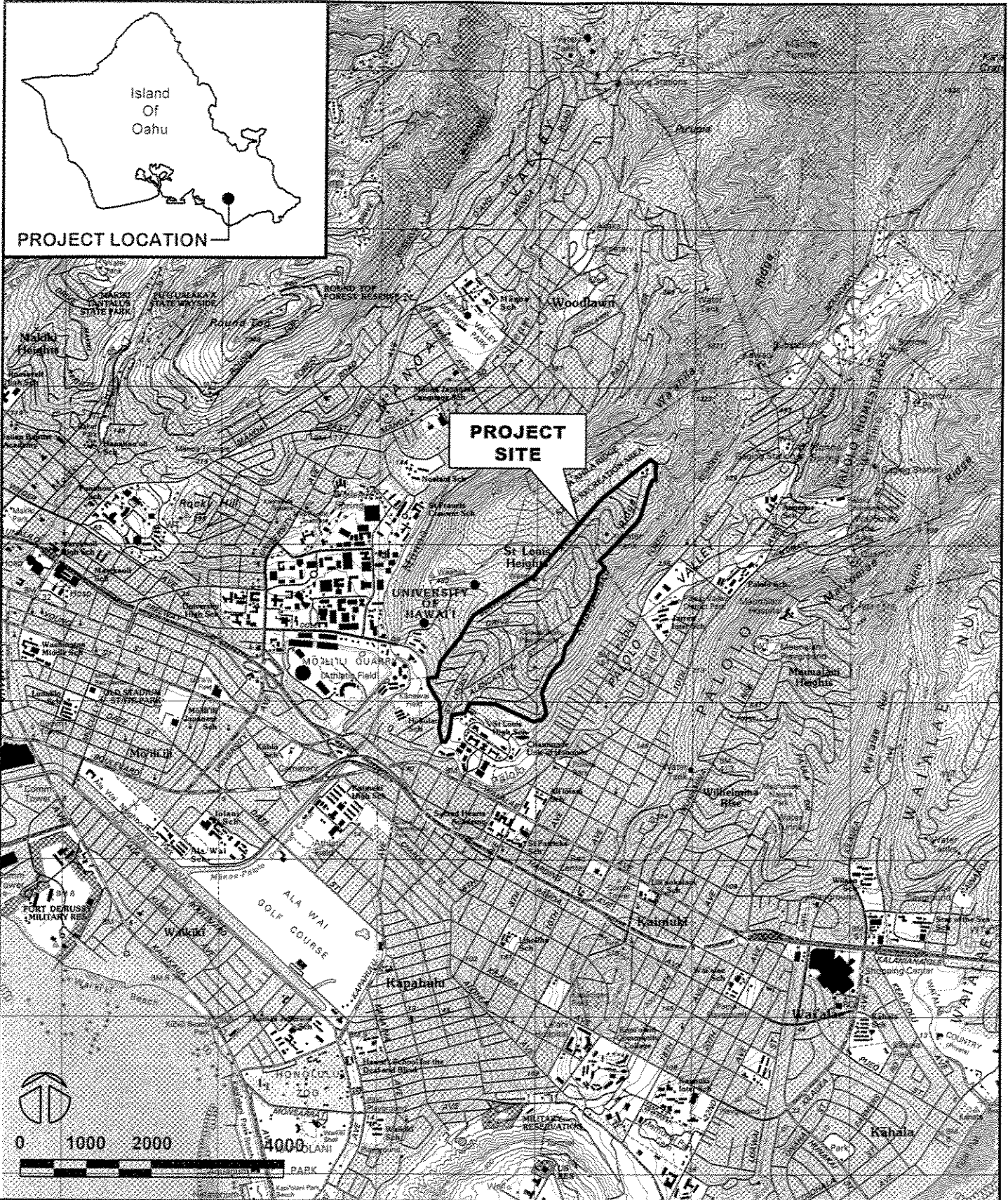
The extent of the project area and development phases is shown in Figure 2-2.

2.2 Project Need

The proposed improvements have been separated into two components: 1) pipeline rehabilitation and replacement; and 2) manhole rehabilitation.

2.2.1 Pipeline Rehabilitation and Replacement

Recommended improvements for pipelines in the project area were based on an assessment of the pipe's hydraulic adequacy, structural condition, and pipe material. A hydraulic assessment of the pipelines in the project site was conducted using the City and County of Honolulu's INFIX no. 2.9 computer model for both existing and future peak flow conditions. The assessment found that most of the pipes are hydraulically adequate, largely because of the considerable downhill slope upon which the pipes are located. Certain segments, however, were found to be hydraulically deficient.




**WILSON OKAMOTO
 & ASSOCIATES, INC.**
 ENGINEERS - PLANNERS

St. Louis Heights Sewer Rehabilitation

LOCATION MAP

FIGURE
2-1

The structural condition of pipelines was assessed using a closed circuit television inspection. Pipeline segments were given a structural rating of 1 to 5 with 1 representing good structural conditions and 5 representing very severe structural deficiencies. Factors affecting the structural rating of the pipes included cracks, misaligned joints, protruding laterals, inflow/infiltration, and structural collapse. Cracking of pipes caused by roots is a significant problem in the project area. Findings of the structural assessment are summarized in Table 2-1.

Finally, the material from which the pipe is constructed was considered. Although the sewer pipes in the project site are predominately vitrified clay pipe, many of the older pipes in the project site are terra cotta pipes, which is an earlier version of the vitrified clay pipe. Although there is no precise definition distinguishing terra cotta pipe from vitrified clay pipe, vitrified clay pipe is generally considered to be superior because of its greater strength. The video inspection conducted for the structural assessment found that terra cotta pipes in the project area have a higher proportion of root intrusion and cracking than the newer vitrified clay pipes. The City's Department of Environmental Services has also indicated that because of the brittle nature of terra cotta pipe, the pipes cannot be maintained using standard cleaning equipment. For these reasons, all terra cotta pipes in the project area will be replaced or rehabilitated.

The criteria used to determine the recommended action for pipeline segments is shown in Table 2-2.

2.2.2 Manhole Rehabilitation

The hydraulic assessment of manholes was based on discussions with and records provided by the Department of Environmental Services, Collection System Maintenance Division. Based on the information obtained, no manholes were identified as causing hydraulic problems to the system.

Visual inspection of the manholes indicated that most of the manholes are in good structural condition. Corrosion of the concrete did not appear to be a significant problem. Infiltration also did not appear to be a significant problem, although only a limited portion of the inspection was done when it was raining. Similar to the pipelines, the manholes were given a structural rating of 1 to 5 with 1 representing good structural conditions and 5 representing very severe structural deficiencies. Recommended actions are shown in Table 2-3.

Table 2-1 Structural Assessment Summary

Structural Rating	Approximate Length of Pipe
Good (1)	13,100 feet
Minor Defect (2)	6,900 feet
Moderate Defect (3)	18,720 feet
Severe Defect (4)	16,877 feet

Table 2-2 Pipeline Action Matrix

Hydraulic Assessment	Pipe Material	Structural Assessment	Recommendation
Inadequate	Terra cotta or non-terra cotta	Very severe to good (1-5)	Pipeline replacement
Adequate	Terra cotta	Very severe to severe (4-5)	Pipeline replacement or rehabilitation
		Moderate to good (1-3)	Pipeline Rehabilitation
	Non-terra cotta	Very severe to severe (4-5)	Pipeline replacement or rehabilitation
		Moderate (3)	Pipeline Rehabilitation
		Minor (2)	No action or rehabilitation
		Good (1)	No action; continued maintenance and monitoring

Table 2-3 Manhole Action Matrix

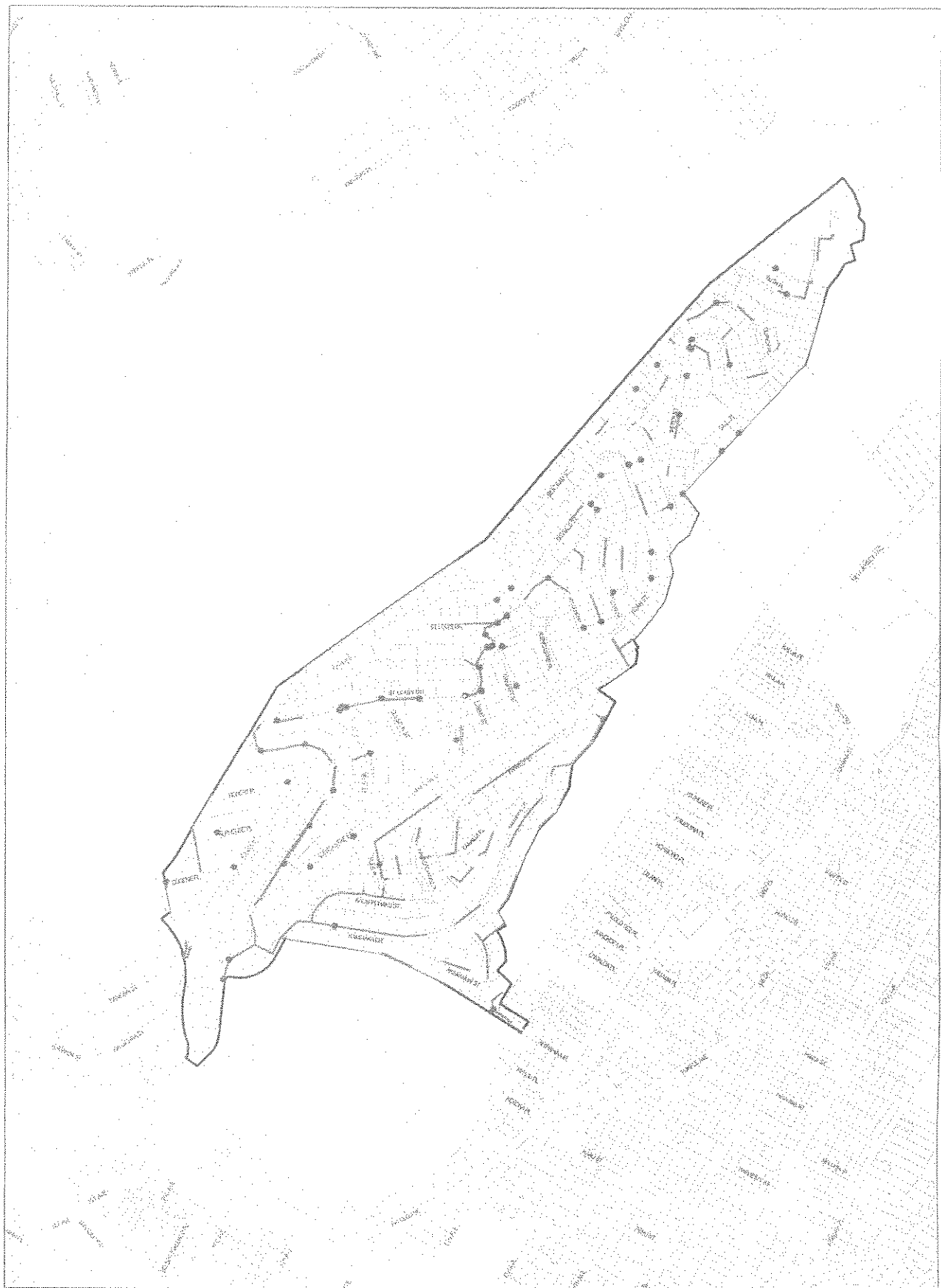
Structural Assessment	Recommendation
Very severe (5)	Replace manhole
Severe (4)	Replace or rehabilitate manhole
Moderate (3)	Rehabilitate manhole
Minor (2)	No action required
Good (1)	No action required

2.3 Project Description

Sewer pipes and manholes in the Saint Louis Heights neighborhood will be improved according to the recommended actions in Tables 2-1 and 2-2. Pipes and manholes that will be replaced or rehabilitated are graphically shown in Figure 2-3. Approximately 1,380 feet of pipe will be replaced, 40,800 feet of pipe will be rehabilitated, and 64 manholes will be rehabilitated. Pipe sizes range from 6 to 8 inches in diameter. Streets that may be affected by the project are listed in Table 2-4.

Table 2-4 Affected Streets

Ahinahina Place
Akeakamai Street
Alencastre Place
Alencastre Street
Alphonse Place
Bertram Street
Dole Street
Eugene Place
Felix Street
Frank Street
Gulston Street
Herman Street
Kalaepohaku Place
Kalaepohaku Street
Kaminaka Drive
Kanalui Street
Libert Street
Maigret Street
Noah Street
Oswald Street
Peter Street
Pule Place
Quincy Place
Robert Place
Ruth Place
Saint Louis Drive



City & County
of
Honolulu
Department of
Design & Construction



Figure 2-3
Proposed Action
Salt Louis Heights
Sewer Rehabilitation

As shown in Figure 2-3, although most of the sewerlines and manholes to be replaced or rehabilitated are located within street right-of-ways, some sewerlines and manholes are located in easements on private property, particularly along the ridgelines. As such, entry and some construction activity on private property may be expected. The Contractor will be responsible for coordinating access to sewer pipes and manholes on private property with landowners.

Selected sewer laterals may also be replaced or rehabilitated to address defects or to replace terra cotta material. The extent of the work would be from the sewer main to the property line. This work may require excavation at both ends of the lateral, with the possibility of work extending into private property. If work in private property is required, the Contractor will be responsible for coordinating access with property owners.

As much as possible, trenchless construction methods will be used to replace and rehabilitate pipelines. "Pipe bursting" is the construction method to be used in areas where pipeline replacement is required and "cured-in-place pipe" lining will be used for pipeline rehabilitation. Open trench construction may also be used to replace pipelines in areas where trenchless construction methods are infeasible. The design life of all three pipe replacement/rehabilitation methods is about 50 years. For manhole rehabilitation, "coating" is the preferred construction method. A description of each of these methods is as follows:

Pipe bursting. Pipe bursting is a trenchless method of installing new pipelines that uses the existing pipeline as a guide. A pipe bursting head is pulled through the existing pipeline to break the pipeline and push the pieces into the surrounding soil. The new pipe, which is typically constructed of high-density polyethylene material, is pulled in immediately behind the pipe bursting head. Photos 1 to 3 show a typical pipe bursting operation.

The typical construction sequence is as follows:

1. Establish traffic control if work is being performed within a right-of-way.
2. Establish a sewer bypass system.
3. Inspect and clean the sewer line.
4. Assemble the high-density polyethylene pipe to be inserted.
5. Excavate the pipe receiving pit (if required). The pipe bursting head may also be retrieved through an existing manhole.
6. Burst pipe.
7. Excavate and connect existing laterals.
8. Backfill pits and restore pavement/ground surface.

Cured-in-place pipe lining. Cured-in-place pipe lining is a method of rehabilitating pipelines. Under this method, a resin impregnated fabric tube is positioned inside the existing pipe. After the tube is in place, heated water is

pumped and circulated within the pipe. The hydrostatic pressure from the water holds the fabric tube against the pipe and the heated water cures the resin. Photos 4 to 7 show a typical cured-in-place pipe installation.

The typical construction sequence is as follows:

1. Inspect and clean the sewer line.
2. Establish traffic control if work is being performed within a right-of-way.
3. Establish a sewer bypass system.
4. Inject resin into tube (may be performed offsite).
5. Install tube into existing pipeline by inversion.
6. Cure tube by circulating heated water.
7. Excavate and connect existing laterals.
8. Backfill pits and restore pavement/ground surface.

Open Trench Construction. Although it is anticipated that most of the pipelines in the project area can be replaced or rehabilitated by using trenchless construction methods, open trench construction may be used to replace certain pipeline segments if it is determined that trenchless methods are infeasible. Open trench construction is a standard construction method that involves excavating a trench along the alignment of a new pipe, bedding and installing the pipe, and backfilling the trench.

Manhole Coating. Manhole coating is a construction method used to rehabilitate manholes. Various coatings, including epoxy and polyurethane, may be applied by spraying or by trowel. Photos 8 and 9 show a typical manhole coating operation.

The typical construction sequence is as follows:

1. Establish traffic control if work is being performed within a right-of-way.
2. Establish a sewer bypass system.
3. Clean manhole.
4. Repair defects (if required).
5. Coat manhole.

2.4 Project Schedule and Cost

Construction activity is anticipated to commence in 2006, or upon the receipt of required regulatory approvals and construction funding. Construction will be done in phases and the total duration of construction activity is anticipated to be approximately 18 to 24 months. The total cost of construction is estimated to be about \$18,750,000.



Photo 1: Pipe Bursting Insertion Pit



Photo 2: Pipe bursting winch at receiving manhole.

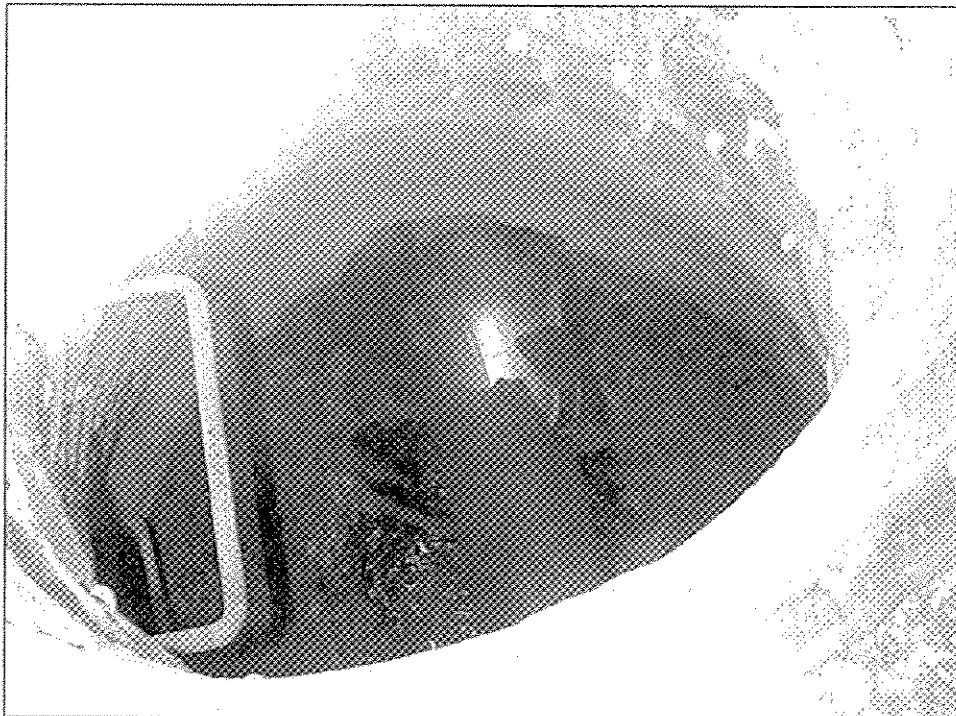


Photo 3: Pipe bursting head entering manhole.

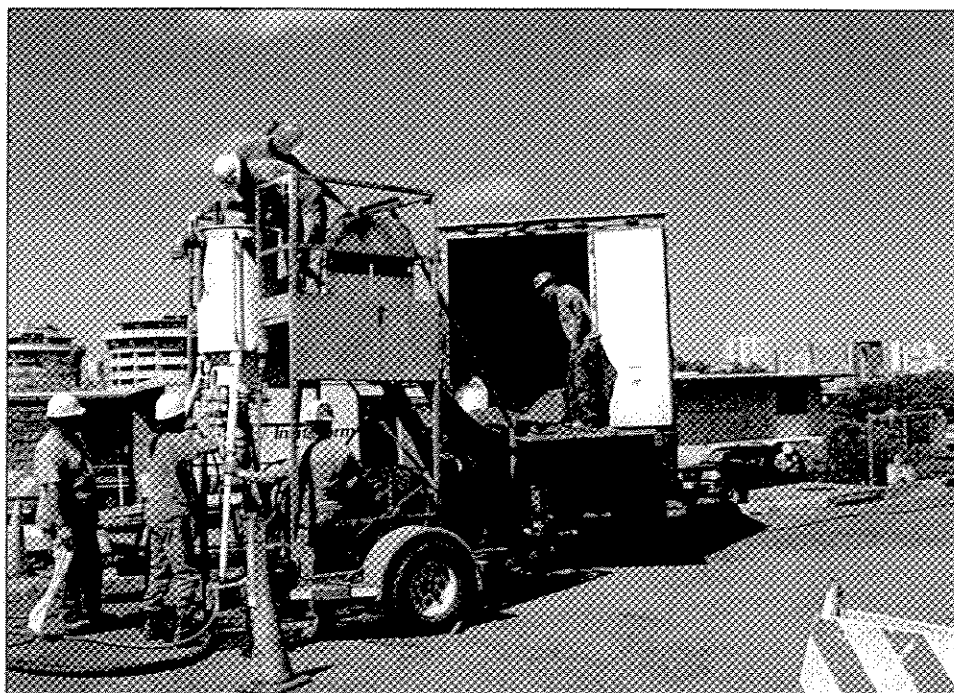


Photo 4: Cured-in-place pipe liner being installed through a manhole.

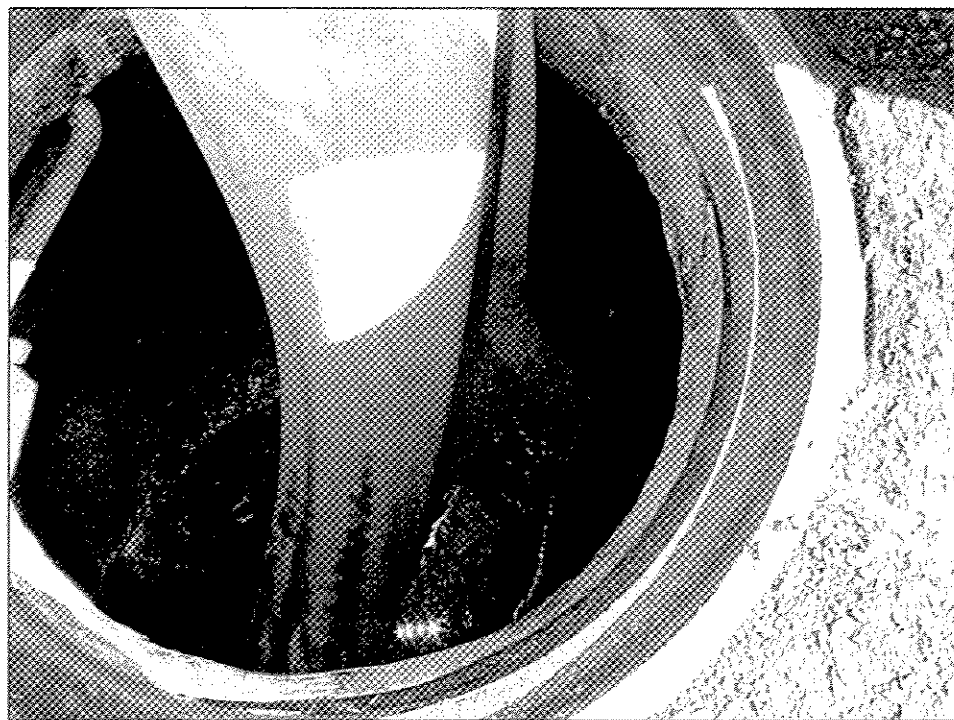


Photo 5: Cured-in-place pipe liner entering manhole.

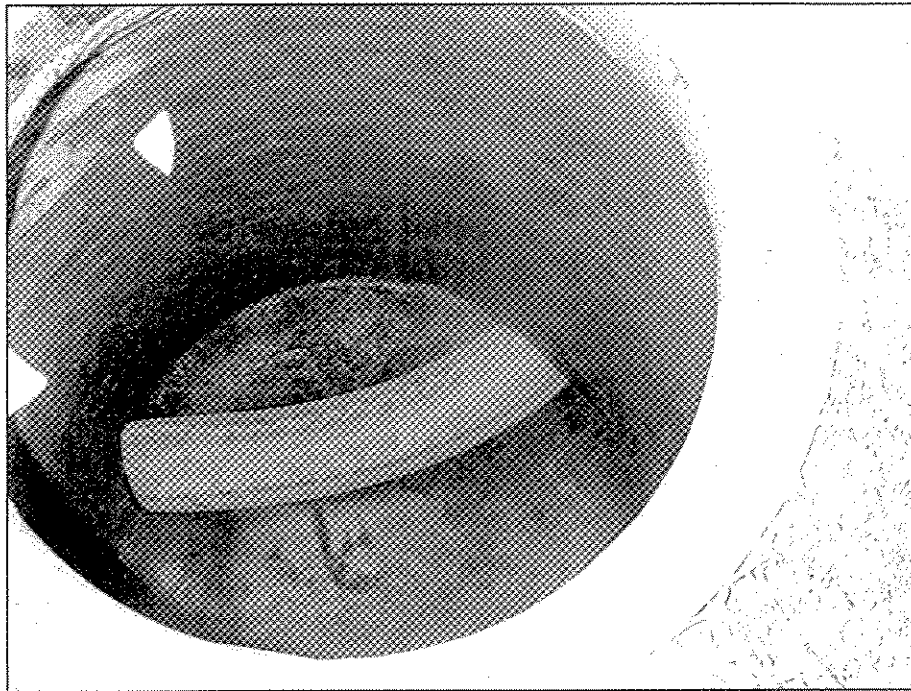


Photo 6: Cured-in-place pipe liner extending through an intermediate manhole.

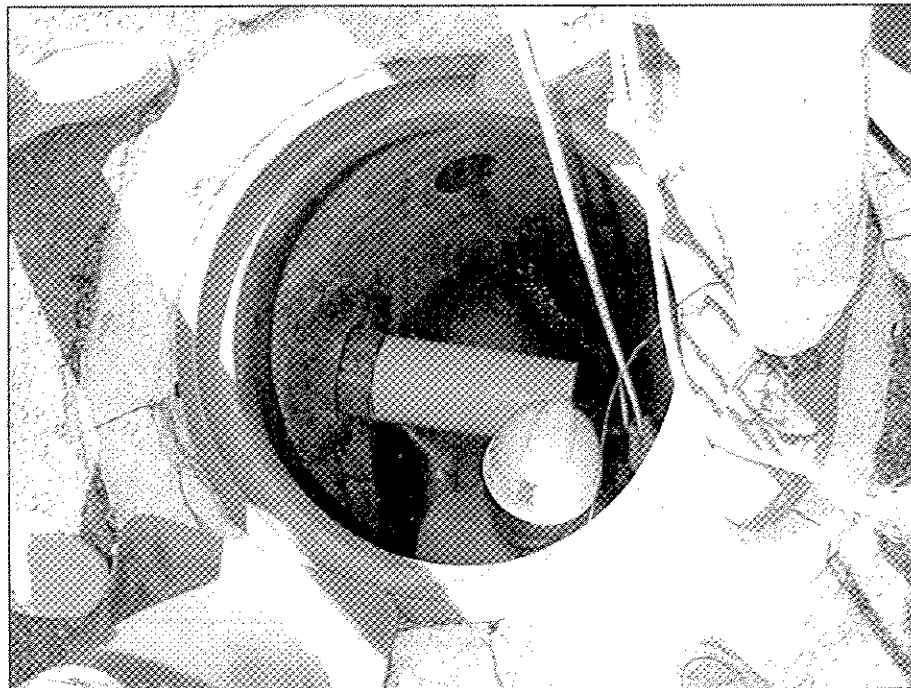


Photo 7: Cured-in-place pipe liner entering the receiving manhole.



Photo 8: Work area for manhole coating.

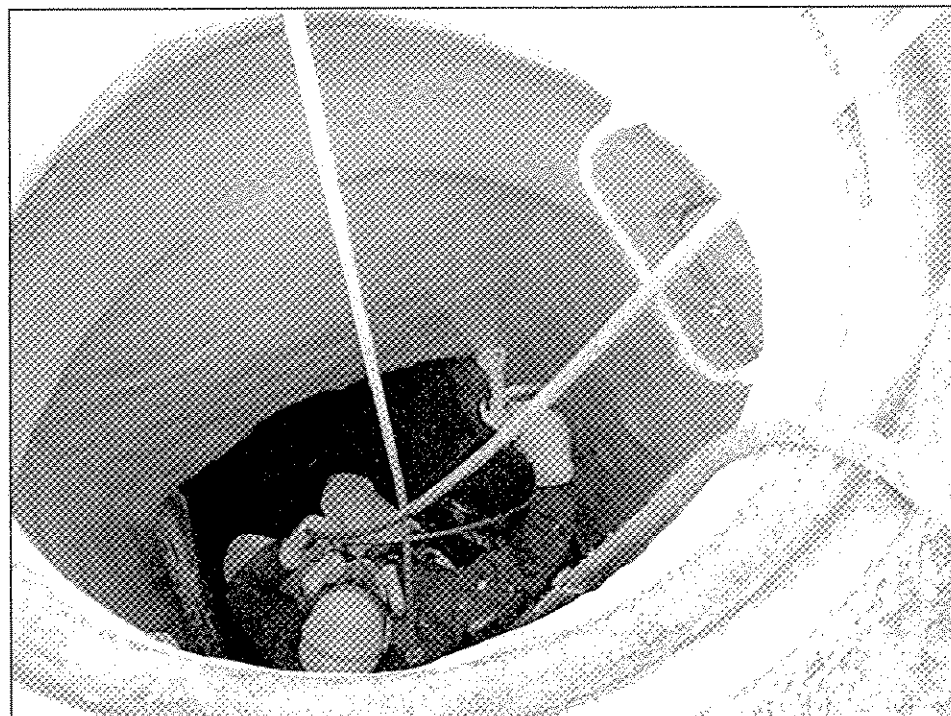


Photo 9: Manhole coating nearing completion.

3 DESCRIPTION OF THE EXISTING ENVIRONMENT, PROJECT IMPACTS AND MITIGATION MEASURES

3.1 Climate

The climate of the project area is characterized by abundant sunshine, persistent trade winds, relatively constant temperatures, and moderate humidity. Average temperature ranges from about 68 degrees Fahrenheit (°F) in the coolest month to about 80°F in the warmest month. Median annual rainfall is about 35 inches. Cooling tradewinds from the northeast prevail throughout most of the year, while occasional "Kona" winds from the south bring warm, humid air.

3.2 Geology, Topography and Soils

The geologic features of the project area emerged from the period of quiescence following the formation of the Koolau volcanic dome. During this period of quiescence, erosion carved great valleys that were subsequently filled with sediments as the sea level rose. The project area lies on a remnant slope that separates Manoa and Palolo Valleys, and was formed from the lavas of the Honolulu Volcanic Series.

The topography of the project area is generally steep, rising from an elevation of about 80 feet at its lower end to about 1,000 feet at its upper boundary, over a distance of about 1 ¼ miles. Due to the steep slope, the road network is winding with grades exceeding 15 percent in some areas.

The predominant soil type in the project area is the Pamoia silty clay, 5 to 20 percent slopes (PID). Typically, the surface layer is about seven inches thick and is dark reddish-brown silty clay. The subsoil is about 55 inches thick and is dark reddish brown clay and silty clay. The clay is very sticky and very plastic when wet but friable when moist. The sub-stratum is soft weathered rock. Permeability is moderately slow, runoff is medium, and the erosion hazard moderate to severe.

Manana silty clay, 15 to 25 percent slopes (MpD) is also present along the eastern boundary of the project area. This soil type is part of the Manana series, which consists of well drained soils on the uplands of Oahu. These soils developed in material weathered from basic igneous rock and are gently sloping to steep. A non-porous, panlike sheet, 1/8 inch to ¼ inch thick, occurs in the subsoil at depths from 30 to 50 inches. Runoff is medium and the erosion hazard is moderate.

Impact and Mitigation Measures

Since trenchless construction methods will be used to replace and rehabilitate pipelines, minimal earthwork will be required. The project will have no significant impact on geology, topography, or soils within the project area.

3.3 Water Resources

There are no surface water resources or potable water wells within the project area. The nearest streams are Manoa and Palolo Streams, located about ¼-mile west and east of the project area, respectively. Both streams are classified as Class 2 inland waters by the State Department of Health. Both streams are also listed on the State's 303(d) list of impaired waters. Pollutants in Manoa Stream include nutrients, turbidity, dieldrin, and chlordane. Trash was identified as a pollutant in Palolo Stream. The project area overlies the Palolo aquifer system of the Honolulu aquifer sector.

Impact and Mitigation Measures

The project is anticipated to have no adverse impact on surface or ground water resources. Using trenchless construction methods minimizes the potential for sediments from entering surface waters through stormwater runoff. Appropriate Best Management Practices, such as installing sediment barriers at storm drain inlets, will be implemented during construction. Impacts will also be mitigated by complying with the conditions of the project's National Pollutant Discharge Elimination System (NPDES) stormwater permit.

3.4 Flora and Fauna

The project area has been extensively urbanized and flora species found in the project area are primarily introduced species. Similarly, most native faunal species that may have inhabited the project area have been displaced and fauna and avifauna species presently found are predominately introduced species.

There are no known endangered floral or faunal species in the project area.

Impact and Mitigation Measures

Since construction will be performed primarily within existing roadways, no significant impact to flora or fauna species is anticipated. Landscaped areas disturbed during construction will be revegetated as soon as practicable.

3.5 Air Quality

Air quality in the project area is influenced primarily by vehicular emissions. Due to the presence of fairly constant tradewinds and absence of point-source pollutant generators, air quality is considered to be good.

Impact and Mitigation Measures

Since trenchless construction methods will be used to replace and rehabilitate the sewer pipes, impacts from fugitive dust will be reduced. Nevertheless, fugitive dust from exposed soils and exhaust emissions from construction vehicles and equipment may impair air quality in the immediate vicinity of construction areas. Although odor from the sewer system during construction will be minimal, odor from the resin-impregnated fabric may affect nearby residences during installation. Impacts can be minimized if the fabric is "wet-out" (injected with resin) off site.

3.6 Noise

Ambient noise levels in the project area are generally low. Noise levels are primarily affected by vehicular traffic and natural conditions.

Impact and Mitigation Measures

Ambient noise levels in the vicinity of construction areas will increase due to construction activity and the use of construction vehicles and equipment. In areas where pipe bursting is used to replace pipes, noise from the pneumatic hammer may also affect nearby residences. Vehicles and equipment that may be utilized include trucks, backhoes, generators, jackhammers, compressors, pumps and similar machinery. Adverse impacts will be mitigated by performing work only during day-time hours, as much as possible. Impacts will also be minimized by using properly muffled equipment and by complying with the terms of the project's noise variance permit.

3.7 Historic, Archaeological and Cultural Resources

There are no known significant archaeological or historic sites in the project area. There are also no known cultural resources or activities that would be affected by the proposed project. The entrance to the Wa'ahila Ridge Trail, which is part of the State's Na Ala Hele trail system, is located near the uppermost elevation of the project area.

Impact and Mitigation Measures

Due to the highly urbanized nature of the project area, and because most construction activity will take place within existing roadways using trenchless construction methods, the potential for uncovering archaeological resources is minimal. Access to cultural resources, such as the Wa'ahila Ridge Trail, is not anticipated to be affected during construction since there are alternative access routes to most destinations in the project area and roadways will remain open to local traffic, as much as possible.

3.8 Population

According to the U.S. Census Bureau, in 2000 the population of the project area was 3,241. There were about 1,250 housing units in the project area, the median year a structure was built was 1957, and about 74% of the housing units were owner occupied. The average age of residents was 46.3 years and the median household income was \$71,300.

Impact and Mitigation Measures

Residents of the project area may be temporarily inconvenienced during construction by temporary road closures, construction noise, and possible declines in air quality. In areas where pipe bursting is used to replace pipes, residents may also feel vibrations as the pipe-bursting head is moved through the pipe. Residents to be affected by construction activity will be notified by the City or by the Contractor prior to the commencement of construction. Sewer service may also be temporarily unavailable to homes that connect to a pipe that is being worked on if a temporary bypass cannot be established, in which case portable toilets will be provided.

Improvements to some of the sewer pipes and manholes and reconnection of sewer laterals will require access onto and construction within private property. The Contractor will be responsible for coordinating access onto private property with individual property owners.

Since the project involves only the replacement and rehabilitation of existing sewer pipes, it will not induce future population growth.

3.9 Infrastructure Systems and Services

3.9.1 Transportation System

The primary roadway serving the project area is Saint Louis Heights Drive, a two-lane roadway that winds from the lower elevation of the project area to near the top. Other major roadways include Bertram Street, Alencastre Street, and Kaminaka Drive.

Impact and Mitigation Measures

Since a significant portion of the proposed construction activity will occur within existing roadways, disruption to vehicular traffic will be unavoidable. Streets that may be affected by construction are listed in Table 2-4. In many cases, however, it may be possible to leave one lane open to traffic which will help to mitigate traffic impacts. Appropriate traffic control devices and warning signs will be installed and construction workers or off-duty police officers will direct traffic flow

when necessary. A traffic control plan for the project will be prepared and a street usage permit will be procured prior to construction. If access to private property is disrupted during construction, the Contractor will be responsible for coordinating access with residents.

3.9.2 Wastewater System

The sewer system in the project area consists of laterals that connect individual residences to a network of 6- and 8-inch diameter gravity sewer pipes. All flows are conveyed to the Sand Island Wastewater Treatment Facility.

Impact and Mitigation Measures

Sewer service may be temporarily unavailable to residences that connect to a pipe that is being worked on if a bypass cannot be established. Should sewer service be unavailable, portable toilets will be provided. The disruption of service is expected to be typically less than one day.

The project will have a long-term beneficial impact by improving the reliability of the wastewater system. Replacement/rehabilitation of the terra cotta pipes will also aid cleaning and maintenance of the pipes.

3.9.3 Drainage System

The storm drain system in the project area consists of 18-48 inch drain pipes that collect stormwater runoff from major roadways. Runoff collected by the storm drain system eventually discharges into Manoa and Palolo Streams.

Impact and Mitigation Measures

The project will have no long-term impact on the quantity of stormwater runoff entering the storm drain system since it involves only the replacement or rehabilitation of subterranean pipes and the amount of impervious area in the project site will not increase. During construction, appropriate measures will be taken to prevent pollutants from entering the storm drain system. Such measures may include installing sediment barriers at storm drain inlets and repaving or revegetating disturbed areas as soon as practicable.

4 RELATIONSHIP TO LAND USE PLANS AND POLICIES

The project's consistency with relevant State and County land use plans and policies is discussed below.

4.1 State Land Use Districts

The State Land Use Law, Chapter 205, HRS, is intended to preserve, protect, and encourage the development of lands in the State for uses that are best suited to the public health and welfare of Hawaii's people. All lands in the State are classified into four land use districts by the State Land Use Commission: Urban, Agricultural, Conservation, and Rural.

The entire project area is within the State Land Use "Urban" district. The project is consistent with the Urban designation as it supports residential use, which is a permitted use in the Urban district.

4.2 City and County of Honolulu General Plan

The General Plan of the City and County of Honolulu sets forth broad statements of social, economic, environmental, and design objectives and policies which are desired over the long term. The proposed project is consistent with the following policies and objectives:

III. Natural Environment

Objective A: To protect and preserve the natural environment.

Policy 7: Protect the natural environment from damaging levels of air, water and noise pollution.

Comment: The proposed project prevents failure of the sanitary sewer system, and thereby protects the natural environment from harmful pollutants.

V. Transportation and Utilities

Objective B: To meet the needs of the people of Oahu for an adequate supply of water and for environmentally sound systems of waste disposal.

Policy 5: Provide safe, efficient and environmentally sensitive waste-collection and waste-disposal services.

Objective C: To maintain a high level of service for all utilities.

Policy 1: Maintain existing utility systems in order to avoid major breakdowns.

Objective D: To maintain transportation and utility systems which will help Oahu continue to be a desirable place to live and visit.

Policy 1: Give primary emphasis in the capital improvement program to the maintenance and improvement of existing roads and utilities.

Comment: The proposed project will prolong the useful life of the sewer system serving the Saint Louis Heights neighborhood, thereby, preventing major breakdowns and allowing for environmentally sound disposal of liquid waste.

4.3 Primary Urban Center Development Plan

The island of Oahu is divided into eight Development/Sustainable Community Plan areas. Each plan implements the objectives and policies of the General Plan and serves as a guide for public policy, investment, and decision making within their respective region.

The project site is within the Primary Urban Center Development Plan (PUC-DP) area. The PUC-DP establishes policies to shape the growth and development of the PUC over the next 20 years. Policies and guidelines relevant to the proposed project include the following:

4.2.2 Policies

- *Implement wastewater collection system improvements to provide adequate service and sound facilities to existing neighborhoods and timely increases in system capacity to areas planned to undergo improvement or change in use.*

4.2.3 Guidelines

- *Complete current projects needed to correct currently identified service or facility inadequacies in neighborhoods where change in service demand is not anticipated.*

The PUC-DP Land Use Map, which illustrates the long-range vision of the plan, designates the project area as "Lower-Density Residential".

Comment: The proposed project is consistent with the policies, guidelines, and vision of the proposed PUC-DP as it supports the desired land use for the area and will maintain the wastewater system in a sound condition.

4.4 Land Use Ordinance

The City and County of Honolulu Land Use Ordinance regulates land use in a manner that will encourage orderly development in accordance with the General Plan and Development Plans. Except for Kalaepohaku Neighborhood Park which is zoned P-2, the entire project site is within the R-5 Residential zoning district, which is intended to provide areas for urban residential development.

Comment: The proposed project will maintain the wastewater system in a sound condition and is necessary to support the designated residential use.

5 ALTERNATIVES TO THE PROPOSED ACTION

5.1 No Action Alternative

Under the No Action alternative, the proposed sewer system improvements will not be undertaken. Instead, sewer pipes and manholes will be replaced or repaired when failures occur. This alternative is undesirable because it increases the risk of a sewer system failure, which would expose residents to potentially hazardous untreated sewage. The natural environment, including water quality, flora, and fauna, may also be adversely affected by sewer system failures.

5.2 Alternative Pipe Replacement Methods

A number of pipe replacement methods were evaluated for the proposed project. A description of each method and the reason they are considered less desirable is presented below.

Open trench construction. Open trench construction is the conventional method of installing pipelines. A trench along the alignment is excavated. The pipe is bedded and laid to the proper grade and the trench is then backfilled and the surface restored. This method is considered to be less desirable to the proposed alternative because the potential for adverse impacts to air quality, water quality, noise, and traffic operations is greater.

Pipe ramming. Pipe ramming is a trenchless construction method that pushes a pipe or casing through the earth from point to point using a percussive force. Once the pipe is installed, the spoils within the pipe are removed. There are several factors that make pipe ramming less desirable. First, pipe ramming is unguided and therefore, there is a greater chance for deviation from line and grade especially for longer drives. Second, the pipe material typically used is steel pipe which would necessitate a two pass system to install the sewer pipe inside of the steel pipe. Third, steel pipe typically comes in long lengths that would result in a relatively long drive shaft.

Auger boring. Auger boring is a trenchless method in which a pipe or casing is pushed through the earth as a cutter head at the front of the pipe cuts the earth. Spoils are transported from the cutter head to the drive shaft by augers within the casing or pipe. Auger boring is less desirable because similar to pipe ramming, the pipe material used is steel pipe which would necessitate a two pass system to install the sewer pipe within the steel pipe. Also, steel pipe typically comes in long lengths that would result in a relatively long drive shaft.

Moling. Moling is a trenchless method in which a hammering or piercing tool is propelled through the ground. As the tool moves through the ground, earth is

displaced and compacted to provide a bore from pit to pit. Once the bore is completed, a pipe is installed into the bore hole. Moling is not considered to be a viable alternative because the process is unguided and the typical installation lengths are short (40 to 80 feet).

Microtunneling. Microtunneling is a trenchless method that installs pipe from pit to pit. Hydraulic jacks push a pipe string forward as material is excavated at the head of the pipe string. Spoils are removed either by auger or by slurry. Microtunneling is not appropriate for a number of reasons. First, this method is typically used for larger pipes, with 10-inch diameter pipe being at the lower end of the method's range (most pipes to be installed for the project are 6-inch). Second, this method, especially a slurry system, would not be cost competitive with the other methods. Third, microtunneling equipment manufacturers have developed the guided boring method to be more cost-effective to install smaller diameter pipes.

Guided boring. Guided boring is a construction method used to install small diameter pipes. This method is similar to microtunneling in that pipe is installed in a straight line from pit to pit. A pilot bore is drilled first to establish line and grade of the installation. The hole is then enlarged and the pipe is jacked into place. Guided boring is not considered to be a viable alternative because there are no local contractors available to implement this method and the length of pipe to be replaced does not warrant hiring an out-of-state contractor.

Horizontal directional drilling. Horizontal directional drilling utilizes a drill rig at the surface to bore a pilot hole along the installation path. The hole may then be enlarged, if necessary by successive reaming passes. Once the hole has been enlarged, a drill rig is used to pull a string of pipe into the hole. Horizontal directional drilling is not suitable for the project because it may not be able to meet the accuracy requirements for the project. Recently, more accurate tracking equipment and procedures have been developed, however, installation of gravity sewer pipes using these methods has been done only on a limited basis and a long track record of such installations does not exist.

5.3 Alternative Pipe Rehabilitation Methods

Several alternative pipe rehabilitation methods were evaluated for the proposed project. A description of each method and the reason they are considered less desirable is presented below.

Fold and form. Fold and form pipe is a thin walled pipe with a cross section that has been deformed for easier insertion into the existing pipe. Once inserted, the pipe is re-rounded for a tight fit against the existing pipe. Due to higher construction cost and because this construction method has not been extensively used in Hawaii, this construction method was determined to be less desirable than the proposed alternative.

Chemical grouting. Chemical grouting is typically used to address infiltration problems. Chemical grout is injected at joints using packers to isolate the pipe section. Chemical grouting was considered to be inappropriate for the proposed project because it is typically used to control infiltration, which is not a predominant problem with the St. Louis Heights system. In addition, the use of chemical grouting in past City projects has not demonstrated a long service life.

Sliplining. Sliplining involves installing a new pipe within an existing pipe. Unlike the fold and form method, there is a significant annulus between the new pipe and the existing pipe. Sliplining is not considered a viable alternative because of the reduction in pipe diameter inherent in this method. Although most of the pipelines in the project area have excess capacity, a relatively large reduction in diameter was deemed unacceptable from an operations and maintenance perspective.

Spiral winding. Spiral winding involves installing a new liner inside an existing pipe by winding a strip of plastic together to create the liner. This construction method is not considered to be suitable because the reduction in pipe diameter is greater than what is considered acceptable. In addition, because this method is not typically used in Hawaii, a mainland contractor may need to be mobilized, which would increase the project cost.

Coating. Coating involves applying a coating inside the existing pipeline to produce a lined pipe. Coating is not considered a suitable alternative because it is unproven for sewer pipeline rehabilitation.

5.4 Alternative Manhole Rehabilitation Methods

Installation of a liner within existing manholes is an alternative to the coating method of rehabilitation. This method involves the installation of a prefabricated fiberglass or plastic liner into a manhole. The liner may be attached directly to the manhole wall, or there may be a grouted annular space between the liner and wall. The higher construction cost of this method makes it less desirable than the preferred alternative.

6 REQUIRED PERMITS AND APPROVALS

The following permits and approvals may be required for the project:

City and County of Honolulu

- Grading, Grubbing and Stockpiling Permit
- Trenching Permit
- Street Usage Permit
- Traffic Control Plan

State of Hawaii

- National Pollutant Discharge Elimination System General Permit
- Noise Variance Permit

7 DETERMINATION OF FONSI

The proposed project is not anticipated to have a significant impact based on the criteria set forth in the State Department of Health Rules, Chapter 200, Title 11, Section 12. The proposed project's relationship to each of the significance criteria is discussed below.

1. *Involves an irrevocable commitment to loss or destruction of any natural or cultural resource.*

The proposed involves an irrevocable commitment of labor, capital and materials. Since the project involves the rehabilitation or replacement of existing facilities largely within existing roadways, it does not involve the loss or destruction of any natural or cultural resource.

2. *Curtails the range of beneficial uses of the environment.*

The project does not curtail the range of beneficial uses of the environment. By maintaining the sewer system in a sound condition, the project has long-term favorable effects by preventing failures that would adversely affect the environment and public health.

3. *Conflicts with the State's long-term environmental policies or goals and guidelines as expressed in Chapter 344, HRS, and any revisions thereof and amendments thereto, court decisions or executive orders;*

The proposed project is consistent with the environmental policies, goals and guidelines set forth in Chapter 344, HRS.

4. *Substantially affects the economic or social welfare of the community or state.*

In the short-term, the project will have beneficial economic impacts due to the hiring of construction workers and purchasing of materials from local suppliers. Residents may be inconvenienced during construction by noise and air quality impacts and traffic disruptions. However, in the long-term, the project will have a beneficial effect on residents of the St. Louis Heights community by maintaining the sewer system in a sound condition.

5. *Substantially affects public health.*

The project has a long-term beneficial impact on public health by implementing measures that will prevent sewer system failures that would adversely affect public health.

6. *Involves substantial secondary impacts, such as population changes or effects on public facilities.*

Since the project involves only the replacement or rehabilitation of existing sewer pipes with similar sized pipes, it will have no substantial secondary impact.

7. *Involves a substantial degradation of environmental quality.*

The project is not anticipated to involve a substantial degradation of environmental quality. Short-term impacts to air and water quality, ambient noise levels, and traffic operations may occur during the construction of the improvements. Impacts during construction will be mitigated by implementing appropriate Best Management Practices and complying with required permit conditions.

8. *Is individually limited but cumulatively has considerable effect upon the environment or involves a commitment for larger actions.*

Since the project involves replacement or rehabilitation of existing sewer pipes and manholes it will not have a cumulative effect on the environment nor does it involve a commitment for larger actions.

9. *Substantially affects a rare, threatened or endangered species, or its habitat.*

There are no known proposed, candidate, or listed threatened or endangered species present at the project site.

10. *Detrimentially affects air or water quality or ambient noise levels.*

Short-term impacts to air and water quality and ambient noise levels may occur during construction of the proposed improvements. Noise impacts will be mitigated by properly muffling construction vehicles and equipment and complying with the conditions of the project's noise variance permit. Air quality impacts will be minimized by using trenchless construction methods and by properly maintaining construction vehicles and equipment. Water quality impacts will also be minimized through the use of trenchless construction methods and also by implementing appropriate Best Management Practices, such as installing sediment barriers at storm drain inlets.

11. *Affects or is likely to suffer damage by being located in an environmentally sensitive area such as a flood plain, tsunami zone, beach, erosion-prone area, geologically hazardous land, estuary, freshwater, or coastal waters.*

The project site is not located within an environmentally sensitive or hazardous area nor will it affect such areas.

12. Substantially affects scenic vistas and viewplanes identified in county or state plans or studies.

The project will have no effect on scenic vistas or viewplanes.

13. Requires substantial energy consumption.

The project will have no long-term effect on energy consumption.

8 CONSULTATION

8.1 Pre-Assessment Consultation

The following agencies and organizations were consulted during the preparation of the Draft EA. Comments received and responses are attached at the end of the Draft EA.

State of Hawaii

Department of Health (DOH)
DOH, Environmental Management Division
Department of Land & Natural Resources (DLNR)
DLNR, State Historic Preservation Division
Office of Hawaiian Affairs

City & County of Honolulu

Department of Facility Maintenance
Department of Parks and Recreation
Department of Planning & Permitting
Department of Transportation Services
Honolulu Board of Water Supply
Honolulu City Council, Councilmember Ann Kobayashi
Diamond Head/Kapahulu/Saint Louis Neighborhood Board No. 5

8.2 Draft Environmental Assessment Consultation

The following agencies and organizations were consulted during the public review period of the Draft EA.

Federal

Army Corps of Engineers
Fish and Wildlife Service
National Marine Fisheries Service

State

Department of Business, Economic Development and Tourism (DBEDT)
DBEDT, Office of Planning
Department of Health (DOH)
DOH, Environmental Management Division
DOH, Office of Environmental Quality Control
Department of Land & Natural Resources (DLNR)
DLNR, Historic Preservation Division
DLNR, Division of State Parks
Department of Transportation
Office of Hawaiian Affairs
Representative Calvin Say
Senator Les Ihara
Kaimuki Public Library
University of Hawaii, Environmental Center

City and County of Honolulu

Department of Facility Maintenance
Department of Parks and Recreation
Department of Planning & Permitting
Department of Transportation Services
Honolulu Board of Water Supply
Honolulu City Council, Councilmember Ann Kobayashi
Diamond Head/Kapahulu/Saint Louis Neighborhood Board No. 5
Municipal Reference and Records Center

Other

Hawaiian Electric Company, Inc.
The Gas Company

8.3 Final Environmental Assessment Distribution

The Final EA will be distributed to the following agencies and organizations:

Federal

Army Corps of Engineers

State

Department of Business, Economic Development and Tourism (DBEDT)

Department of Health (DOH)

Department of Land & Natural Resources (DLNR)

University of Hawaii, Environmental Center

City and County of Honolulu

Department of Facility Maintenance

Department of Parks and Recreation

Department of Planning & Permitting

Department of Transportation Services

Honolulu Board of Water Supply

Diamond Head/Kapahulu/Saint Louis Neighborhood Board No. 5

Municipal Reference and Records Center

Other

The Gas Company

9 REFERENCES

City and County of Honolulu, Department of Planning and Permitting. Draft Primary Urban Center Development Plan. May 2002.

Park Engineering, Inc. Saint Louis Heights Reconstructed Sewer, Final Environmental Assessment. Prepared for the City and County of Honolulu Department of Public Works. July 1985.

State of Hawaii, Department of Health. Final 2002 List of Impaired Waters in Hawaii Prepared Under Clean Water Act §303(d). December 2002.

United States Census Bureau. Census 2000 Summary File 3.

United States Department of Agriculture, Soil Conservation Service. Soil Survey of the Islands of Kauai, Oahu, Maui, Molokai, and Lanai, State of Hawaii. August 1972.

Wilson Okamoto Corporation. Design Alternative Report for St. Louis Heights Sewer Rehabilitation, Preliminary Submittal. Prepared for the City and County of Honolulu Department of Design and Construction. December 2003.

PRE-CONSULTATION COMMENTS RECEIVED

LINDA LINGLE
GOVERNOR OF HAWAII



PETER T. YOUNG
CHAIRPERSON
BOARD OF LAND AND NATURAL RESOURCES
COMMISSION ON WATER RESOURCE MANAGEMENT

DAN DAVIDSON
DEPUTY DIRECTOR - LAND

ERNEST Y.W. LAU
DEPUTY DIRECTOR - WATER



STATE OF HAWAII
DEPARTMENT OF LAND AND NATURAL RESOURCES

HISTORIC PRESERVATION DIVISION
KAKUHIHEWA BUILDING, ROOM 555
601 KAMOKILA BOULEVARD
KAPOLEI, HAWAII 96707

AQUATIC RESOURCES
BOATING AND OCEAN RECREATION
BUREAU OF CONVEYANCES
COMMISSION ON WATER RESOURCE MANAGEMENT
CONSERVATION AND COASTAL LANDS
CONSERVATION AND RESOURCES ENFORCEMENT
ENGINEERING
FORESTRY AND WILDLIFE
HISTORIC PRESERVATION
KAHOOLAWE ISLAND RESERVE COMMISSION
LAND
STATE PARKS

RECEIVED
MAR 22 2004

WILSON OKAMOTO CORPORATION

HAWAII HISTORIC PRESERVATION
DIVISION REVIEW

MAR 16 2004

Log #: 2004.0790
Doc #:0403EJ38

Applicant/Agency: Rodney Funakoshi, AICP
Project Manager
Address: Wilson Okamoto Corporation
1907 S. Beretania St.
Honolulu, Hawaii 96826

SUBJECT: Chapter 6E-8 Historic Preservation Review-City & County of Honolulu
Department of Design & Construction St. Louis Heights Sewer System
Improvements
Ahupua`a: Kalaepohaku (Honolulu)
District, Island: Kona, O`ahu
TMK: (1) 3-3

1. We believe there are no historic properties present, because:

- a) intensive cultivation has altered the land
- b) residential development/urbanization has altered the land
- c) previous grubbing/grading has altered the land
- d) an acceptable archaeological assessment or inventory survey found no historic properties
- e) other: Rehabilitation and replacement activities will take place in areas previously disturbed during installation of the existing sewer system. There are no known significant historic sites within the roadways.

2. This project has already gone through the historic preservation review process, and mitigation has been completed ____.

Thus, we believe that "no historic properties will be affected" by this undertaking.

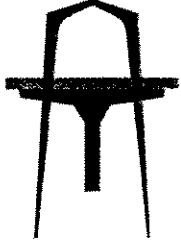
Aloha,

P. Holly McEldowney, Administrator
State Historic Preservation Division

MAR 17 2004

6537-01
April 16, 2004

**WILSON
OKAMOTO
CORPORATION**



**ENGINEERS
PLANNERS**

1907 S. BERETANIA ST.
SUITE 400
HONOLULU, HI 96826
PH. (808)946-2277
FAX: (808)946-2253

Ms. P. Holly McEldowney, Administrator
State Historic Preservation Division
Department of Land and Natural Resources
State of Hawaii
601 Kamokila Boulevard, Room 555
Kapolei, Hawaii 96707

Subject: Environmental Assessment Pre-Consultation
Saint Louis Heights Sewer System Improvements
Honolulu, Oahu, Hawaii

Dear Ms. McEldowney:

Thank you for your letter of March 16, 2004 indicating that no historic properties are likely to be affected by the proposed project since residential development has already altered the land and construction activity will occur in areas previously disturbed for the existing sewer system.

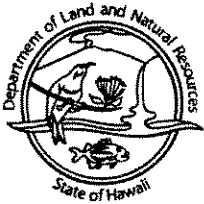
We appreciate your participation in the environmental review process.

Sincerely,

A handwritten signature in cursive script, appearing to read "Rodney Funakoshi". The signature is written in dark ink and is positioned above the typed name.

Rodney Funakoshi, AICP
Project Manager

LINDA LINGLE
GOVERNOR OF HAWAII



STATE OF HAWAII
DEPARTMENT OF LAND AND NATURAL RESOURCES

DIVISION OF STATE PARKS
POST OFFICE BOX 621
HONOLULU, HAWAII 96809

PETER T. YOUNG
CHAIRPERSON
BOARD OF LAND AND NATURAL RESOURCES
COMMISSION ON WATER RESOURCE MANAGEMENT

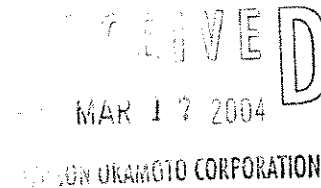
DAN DAVIDSON
DEPUTY DIRECTOR - LAND

ERNEST Y.W. LAU
DEPUTY DIRECTOR - WATER

AQUATIC RESOURCES
BOATING AND OCEAN RECREATION
BUREAU OF CONVEYANCES
COMMISSION ON WATER RESOURCE MANAGEMENT
CONSERVATION AND COASTAL LANDS
CONSERVATION AND RESOURCES ENFORCEMENT
ENGINEERING
FORESTRY AND WILDLIFE
HISTORIC PRESERVATION
KAHOOLAWE ISLAND RESERVE COMMISSION
LAND
STATE PARKS

March 11, 2004

Wilson Okamoto Corporation
1907 S. Beretania St., Suite 400
Honolulu, HI 96826
Attn: Rodney Funakoshi



Dear Mr. Funakoshi:

We wish to be a consulted party for the draft environmental assessment (DEA) being prepared for the proposed improvements to the Saint Louis Heights sewer system. Waahila Ridge State Recreation Area is under our jurisdiction. The project area is described as a 1,947 acre area and may include some of the residences adjacent to the park's boundaries. If so, we would like to be kept informed of potential impacts, particularly traffic related that the sewer system project may have on the park.

If you have questions, please contact Lauren Tanaka at 587-0293 or by email to: lauren_a_tanaka@hawaii.gov

Sincerely,

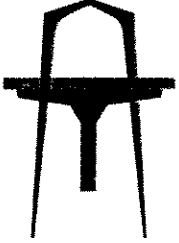
A handwritten signature in black ink, appearing to read "Daniel S. Quinn".

Daniel S. Quinn, Administrator

c: Land Division

6537-01
April 16, 2004

WILSON
OKAMOTO
CORPORATION



ENGINEERS
PLANNERS

1907 S. BERETANIA ST.
SUITE 400
HONOLULU, HI 96826
PH: (808)946-2277
FAX: (808)946-2253

Mr. Daniel S. Quinn, Administrator
Division of State Parks
Department of Land and Natural Resources
State of Hawaii
P.O. Box 621
Honolulu, Hawaii 96809

Subject: Environmental Assessment Pre-Consultation
Saint Louis Heights Sewer System Improvements
Honolulu, Oahu, Hawaii

Dear Mr. Quinn:

Thank you for your letter of March 11, 2004 commenting on the subject project. With regard to the impact the proposed project may have on access to Waahila Ridge State Recreation Area, although the project will likely cause local traffic disruptions, we anticipate that continuous access to the Waahila Ridge State Recreation Area can be maintained. As requested, a copy of the project's Draft Environmental Assessment will be transmitted for your review when it is prepared.

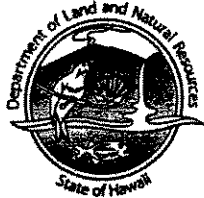
We appreciate your participation in the environmental review process.

Sincerely,

Rodney Funakoshi, AICP
Project Manager

cc: Dierdre S. Mamiya, DLNR Land Division

LINDA LINGLE
GOVERNOR OF HAWAII



STATE OF HAWAII
DEPARTMENT OF LAND AND NATURAL RESOURCES
LAND DIVISION

POST OFFICE BOX 621
HONOLULU, HAWAII 96809

March 24, 2004

LOUISEWER.RCM
LD-NAV

Wilson Okamoto Corporation
Rodney Funakoshi, AICP
Project Manager
1907 South Beretania Street, Suite 400
Honolulu, Hawaii 96826

Dear Mr. Funakoshi:

SUBJECT: Environmental Assessment Pre-Consultation
Project: Saint Louis Heights Sewer System Improvements
Agency: C&CoH Department of Design and Construction
Location: Honolulu, Island of Oahu, Hawaii
Consultant: Wilson Okamoto Corporation

Thank you for the opportunity to review and comment on the subject matter

A copy of the your letter dated March 1, 2004 pertaining to the proposed project was transmitted or made available to the following Department of Land and Natural Resources' Division for their review and comment.

- Division of Forestry & Wildlife
- Division of State Parks
- Engineering Division
- Commission on Water Resource Management
- Office of Conservation and Coastal Lands
- Land-Oahu District Land Office

Enclosed please find a copy of the Engineering Division and Division of State Parks comment.

Based on the attached responses, the Department of Land and Natural Resources has no other comment to offer at this time.

Should you have any questions, please contact Nicholas A. Vaccaro of the Land Division Support Services Branch at 587-0384.

Very truly yours,

A handwritten signature in black ink, appearing to read "Dierdre S. Mamiya".

DIERDRE S. MAMIYA
Administrator

C: ODLO

PETER T. YOUNG
CHAIRPERSON
BOARD OF LAND AND NATURAL RESOURCES
COMMISSION ON WATER RESOURCE MANAGEMENT

DAN DAVIDSON
DEPUTY DIRECTOR - LAND

ERNEST Y.W. LAU
DEPUTY DIRECTOR - WATER

AQUATIC RESOURCES
BOATING AND OCEAN RECREATION
BUREAU OF CONVEYANCES
COMMISSION ON WATER RESOURCE MANAGEMENT
CONSERVATION AND COASTAL LANDS
CONSERVATION AND RESOURCES ENFORCEMENT
ENGINEERING
FORESTRY AND WILDLIFE
HISTORIC PRESERVATION
KAHOOLAWE ISLAND RESERVE COMMISSION
LAND
STATE PARKS

RECEIVED
MAR 26 2004
WILSON OKAMOTO CORPORATION

LINDA LINGLE
GOVERNOR OF HAWAII

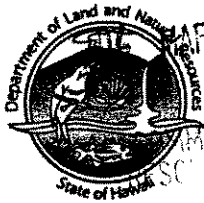
RECEIVED



PETER T. YOUNG
CHAIRPERSON
BOARD OF LAND AND NATURAL RESOURCES
COMMISSION ON WATER RESOURCE MANAGEMENT

DAN DAVIDSON
DEPUTY DIRECTOR - LAND

ERNEST Y.W. LAU
DEPUTY DIRECTOR - WATER



MAR 9 8:45

COMMISSION ON WATER RESOURCE MANAGEMENT

STATE OF HAWAII
DEPARTMENT OF LAND AND NATURAL RESOURCES
LAND DIVISION

POST OFFICE BOX 621
HONOLULU, HAWAII 96809

AQUATIC RESOURCES
BOATING AND OCEAN RECREATION
BUREAU OF CONVEYANCES
COMMISSION ON WATER RESOURCE MANAGEMENT
CONSERVATION AND COASTAL LANDS
CONSERVATION AND RESOURCES ENFORCEMENT
ENGINEERING
FORESTRY AND WILDLIFE
HISTORIC PRESERVATION
KAHOOLAWE ISLAND RESERVE COMMISSION
LAND
STATE PARKS

March 8, 2004

LD/NAV
LOUISSEWER.CMT

Suspense Date: 3/19/04

MEMORANDUM:

From:

- TO: Division of Aquatic Resources
- XXX Division of Forestry & Wildlife
- XXX Division of State Parks
- Division of Boating and Ocean Recreation
- XXX Engineering Division
- XXX Commission on Water Resource Management
- XXX Office of Conservation and Coastal Lands
- XXX Land-Oahu District Land Office

RECEIVED
LAND DIVISION

2004 MAR 23 A 10:06

RECEIVED
LAND DIVISION

To:

FROM: Dierdre S. Mamiya, Administrator
Land Division

SUBJECT: Environmental Assessment Pre-Consultation
Project: Saint Louis Heights Sewer System Improvements
Location: Honolulu. Island of Oahu, Hawaii
Consultant: Wilson Okamoto Corporation (Rodney Funakoshi)
Agency: C&CoH Department of Design and Construction

Please review the attached letter dated March 1, 2004 (project description) pertaining to the proposed project and submit your comment (if any) to us on division letterhead signed and dated by the suspense date. If we do not receive a response by the suspense date, we will assume there are no comments.

Should you need more time to review this matter, please contact Nicholas A. Vaccaro at 587-0384.

No comments.

Comments attached.

Date: 3-22-04

Signed: [Signature]

Division: CWRM

Name: Peter T. Young

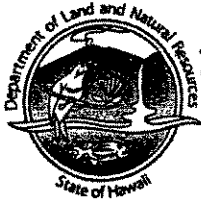
LINDA LINGLE
GOVERNOR OF HAWAII



PETER T. YOUNG
CHAIRPERSON
BOARD OF LAND AND NATURAL RESOURCES
COMMISSION ON WATER RESOURCE MANAGEMENT

DAN DAVIDSON
DEPUTY DIRECTOR - LAND

ERNEST Y.W. LAU
DEPUTY DIRECTOR - WATER



RECEIVED
LAND DIVISION

2004 MAR 23 P 2:21

STATE OF HAWAII
DEPARTMENT OF LAND AND NATURAL RESOURCES
LAND DIVISION

POST OFFICE BOX 621
HONOLULU, HAWAII 96809

AQUATIC RESOURCES
BOATING AND OCEAN RECREATION
BUREAU OF CONVEYANCES
COMMISSION ON WATER RESOURCE MANAGEMENT
CONSERVATION AND COASTAL LANDS
CONSERVATION AND RESOURCES ENFORCEMENT
ENGINEERING
FORESTRY AND WILDLIFE
HISTORIC PRESERVATION
KAHOOLAWE ISLAND RESERVE COMMISSION
LAND
STATE PARKS

March 8, 2004

LD/NAV
LOUISSEWER.CMT

Suspense Date: 3/19/04

MEMORANDUM:

TO: Division of Aquatic Resources
XXX Division of Forestry & Wildlife
XXX Division of State Parks
Division of Boating and Ocean Recreation
XXX Engineering Division
XXX Commission on Water Resource Management
XXX Office of Conservation and Coastal Lands
XXX Land-Oahu District Land Office

FROM: Dierdre S. Mamiya, Administrator
Land Division

SUBJECT: Environmental Assessment Pre-Consultation
Project: Saint Louis Heights Sewer System Improvements
Location: Honolulu. Island of Oahu, Hawaii
Consultant: Wilson Okamoto Corporation (Rodney Funakoshi)
Agency: C&CoH Department of Design and Construction

Please review the attached letter dated March 1, 2004 (project description) pertaining to the proposed project and submit your comment (if any) to us on division letterhead signed and dated by the suspense date. If we do not receive a response by the suspense date, we will assume there are no comments.

Should you need more time to review this matter, please contact Nicholas A. Vaccaro at 587-0384.

() No comments.

Comments attached.

Date: 3/23/04

Signed: Eric T. Horvath

Division: Engineering

Name: Eric T. Horvath

DEPARTMENT OF LAND AND NATURAL RESOURCES
ENGINEERING DIVISION

LANAV

Ref.: LOUISSEWER.CMT

COMMENTS

- () We confirm that the project site, according to the Flood Insurance Rate Map (FIRM), is located in Flood Zone ____.
- Please take note that the project site, according to the Flood Insurance Rate Map (FIRM), is located in Zone X.
- () Please note that the correct Flood Zone Designation for the project site according to the Flood Insurance Rate Map (FIRM) is ____.
- () Please note that the project must comply with the rules and regulations of the National Flood Insurance Program (NFIP) presented in Title 44 of the Code of Federal Regulations (44CFR), whenever development within a Special Flood Hazard Area is undertaken. If there are any questions, please contact the State NFIP Coordinator, Ms. Carol Tyau-Beam, of the Department of Land and Natural Resources, Engineering Division at (808) 587-0267.

Please be advised that 44CFR indicates the minimum standards set forth by the NFIP. Your Community's local flood ordinance may prove to be more restrictive and thus take precedence over the minimum NFIP standards. If there are questions regarding the local flood ordinances, please contact the applicable County NFIP Coordinators below:

- () Mr. Robert Sumimoto at (808) 523-4254 or Mr. Mario Siu Li at (808) 523-4247 of the City and County of Honolulu, Department of Planning and Permitting.
 - () Mr. Kelly Gomes at (808) 961-8327 (Hilo) or Mr. Kiran Emler at (808) 327-3530 (Kona) of the County of Hawaii, Department of Public Works.
 - () Mr. Francis Cerizo at (808) 270-7771 of the County of Maui, Department of Planning.
 - () Mr. Mario Antonio at (808) 241-6620 of the County of Kauai, Department of Public Works.
- () The applicant should include project water demands and infrastructure required to meet water demands. Please note that the implementation of any State-sponsored projects requiring water service from the Honolulu Board of Water Supply system must first obtain water allocation credits from the Engineering Division before it can receive a building permit and/or water meter.
 - () The applicant should provide the water demands and calculations to the Engineering Division so it can be included in the State Water Projects Plan Update.

- () Additional Comments: _____

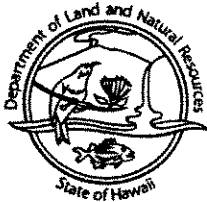
- () Other: _____

Should you have any questions, please call Mr. Andrew Monden of the Planning Branch at 587-0229.

Signed: *Eric T. Hiran*
ERIC T. HIRANO, CHIEF ENGINEER

Date: 3/23/04

LINDA LINGLE
GOVERNOR OF HAWAII



STATE OF HAWAII
DEPARTMENT OF LAND AND NATURAL RESOURCES

DIVISION OF STATE PARKS
POST OFFICE BOX 621
HONOLULU, HAWAII 96809

PETER T. YOUNG
CHAIRPERSON
BOARD OF LAND AND NATURAL RESOURCES
COMMISSION ON WATER RESOURCE MANAGEMENT

DAH DAVIDSON
DEPUTY DIRECTOR - LAND

ERNEST Y.W. LAU
DEPUTY DIRECTOR - WATER

AQUATIC RESOURCES
BOATING AND OCEAN RECREATION
BUREAU OF CONVEYANCES
COMMISSION ON WATER RESOURCE MANAGEMENT
CONSERVATION AND COASTAL LANDS
CONSERVATION AND RESOURCES ENFORCEMENT
ENGINEERING
FORESTRY AND WILDLIFE
HISTORIC PRESERVATION
KAHOOLAWE ISLAND RESERVE COMMISSION
LAND
STATE PARKS

March 11, 2004

Wilson Okamoto Corporation
1907 S. Beretania St., Suite 400
Honolulu, HI 96826
Attn: Rodney Funakoshi

Dear Mr. Funakoshi:

We wish to be a consulted party for the draft environmental assessment (DEA) being prepared for the proposed improvements to the Saint Louis Heights sewer system. Waahila Ridge State Recreation Area is under our jurisdiction. The project area is described as a 1,947 acre area and may include some of the residences adjacent to the park's boundaries. If so, we would like to be kept informed of potential impacts, particularly traffic related that the sewer system project may have on the park.

If you have questions, please contact Lauren Tanaka at 587-0293 or by email to: lauren_a_tanaka@hawaii.gov

Sincerely,

Daniel S. Quinn, Administrator

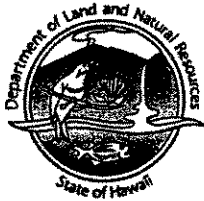
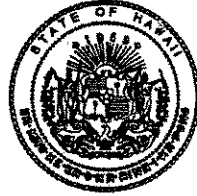
c: Land Division

RECEIVED
LAND DIVISION
2004 MAR 17 A 10:00
MAIL ROOM

2401

LINDA LINGLE
GOVERNOR OF HAWAII

STATE OF HAWAII
DIVISION OF
STATE PARKS
MAR 9 9 24 AM '04



PETER T. YOUNG
CHAIRPERSON
BOARD OF LAND AND NATURAL RESOURCES
COMMISSION ON WATER RESOURCE MANAGEMENT

DAN DAVIDSON
DEPUTY DIRECTOR - LAND

ERNEST Y.W. LAU
DEPUTY DIRECTOR - WATER

STATE OF HAWAII
DEPARTMENT OF LAND AND NATURAL RESOURCES
LAND DIVISION

POST OFFICE BOX 621
HONOLULU, HAWAII 96809

March 8, 2004

AQUATIC RESOURCES
BOATING AND OCEAN RECREATION
BUREAU OF CONVEYANCES
COMMISSION ON WATER RESOURCE MANAGEMENT
CONSERVATION AND COASTAL LANDS
CONSERVATION AND RESOURCES ENFORCEMENT
ENGINEERING
FORESTRY AND WILDLIFE
HISTORIC PRESERVATION
KAHOOLAWE ISLAND RESERVE COMMISSION
LAND
STATE PARKS

LD/NAV
LOUISSEWER.CMT

Suspense Date: 3/19/04

ADMINISTRATOR
ASST ADMIN
3/19/04
MAYOR BR
DEPUTY DIR
ASST
STAFF RM
ADM & REC
REPLY
FOLLOW UP
COPIES
SIGNED
REPLY TO

MEMORANDUM:

TO: Division of Aquatic Resources
XXX Division of Forestry & Wildlife
XXX Division of State Parks
Division of Boating and Ocean Recreation
XXX Engineering Division
XXX Commission on Water Resource Management
XXX Office of Conservation and Coastal Lands
XXX Land-Oahu District Land Office

FROM: Dierdre S. Mamiya, Administrator
Land Division

SUBJECT: Environmental Assessment Pre-Consultation
Project: Saint Louis Heights Sewer System Improvements
Location: Honolulu. Island of Oahu, Hawaii
Consultant: Wilson Okamoto Corporation (Rodney Funakoshi)
Agency: C&CoH Department of Design and Construction

Please review the attached letter dated March 1, 2004 (project description) pertaining to the proposed project and submit your comment (if any) to us on division letterhead signed and dated by the suspense date. If we do not receive a response by the suspense date, we will assume there are no comments.

Should you need more time to review this matter, please contact Nicholas A. Vaccaro at 587-0384.

() No comments.

(✓) Comments attached.

Date: 3/12/04

Signed: *[Signature]*

Division: State Parks

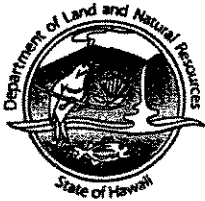
Name: Daniel S. Quinn

RECEIVED
LAND DIVISION
2004 MAR 17 A 10:10

LINDA LINGLE
GOVERNOR OF HAWAII



RECEIVED
LAND DIVISION



2004 MAR 12 P 3:55
STATE OF HAWAII
DEPARTMENT OF LAND AND NATURAL RESOURCES
LAND DIVISION
POST OFFICE BOX 621
HONOLULU, HAWAII 96809

PETER T. YOUNG
CHAIRPERSON
BOARD OF LAND AND NATURAL RESOURCES
COMMISSION ON WATER RESOURCE MANAGEMENT

DAN DAVIDSON
DEPUTY DIRECTOR - LAND

ERNEST Y.W. LAU
DEPUTY DIRECTOR - WATER

AQUATIC RESOURCES
BOATING AND OCEAN RECREATION
BUREAU OF CONVEYANCES
COMMISSION ON WATER RESOURCE MANAGEMENT
CONSERVATION AND COASTAL LANDS
CONSERVATION AND RESOURCES ENFORCEMENT
ENGINEERING
FORESTRY AND WILDLIFE
HISTORIC PRESERVATION
KAHOOLAWE ISLAND RESERVE COMMISSION
LAND
STATE PARKS

March 8, 2004

LD/NAV
LOUISSEWER.CMT

Suspense Date: 3/19/04

MEMORANDUM:

TO: Division of Aquatic Resources
XXX Division of Forestry & Wildlife
XXX Division of State Parks
Division of Boating and Ocean Recreation
XXX Engineering Division
XXX Commission on Water Resource Management
XXX Office of Conservation and Coastal Lands
XXX Land-Oahu District Land Office

FROM: Dierdre S. Mamiya, Administrator
Land Division

SUBJECT: Environmental Assessment Pre-Consultation
Project: Saint Louis Heights Sewer System Improvements
Location: Honolulu. Island of Oahu, Hawaii
Consultant: Wilson Okamoto Corporation (Rodney Funakoshi)
Agency: C&CoH Department of Design and Construction

Please review the attached letter dated March 1, 2004 (project description) pertaining to the proposed project and submit your comment (if any) to us on division letterhead signed and dated by the suspense date. If we do not receive a response by the suspense date, we will assume there are no comments.

Should you need more time to review this matter, please contact Nicholas A. Vaccaro at 587-0384.

No comments.

Date: MAR - 9 2004

Comments attached.

Signed:

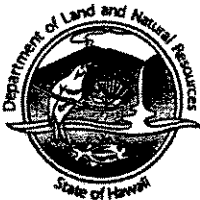
Division: _____

Name: MICHAEL G. BUCK, ADMINISTRATOR
DIVISION OF FORESTRY AND WILDLIFE

LINDA LINGLE
GOVERNOR OF HAWAII



RECEIVED
LAND DIVISION



2004 MAR 15 A 11:21

STATE OF HAWAII
DEPARTMENT OF LAND AND NATURAL RESOURCES
LAND DIVISION
POST OFFICE BOX 621
HONOLULU, HAWAII 96809

PETER T. YOUNG
CHAIRPERSON
BOARD OF LAND AND NATURAL RESOURCES
COMMISSION ON WATER RESOURCE MANAGEMENT

DAN DAVIDSON
DEPUTY DIRECTOR - LAND

ERNEST Y.W. LAU
DEPUTY DIRECTOR - WATER

AQUATIC RESOURCES
BOATING AND OCEAN RECREATION
BUREAU OF CONVEYANCES
COMMISSION ON WATER RESOURCE MANAGEMENT
CONSERVATION AND COASTAL LANDS
CONSERVATION AND RESOURCES ENFORCEMENT
ENGINEERING
FORESTRY AND WILDLIFE
HISTORIC PRESERVATION
KAHOOLAWE ISLAND RESERVE COMMISSION
LAND
STATE PARKS

March 8, 2004

LD/NAV
LOUISSEWER.CMT

Suspense Date: 3/19/04

MEMORANDUM:

TO: Division of Aquatic Resources
XXX Division of Forestry & Wildlife
XXX Division of State Parks
Division of Boating and Ocean Recreation
XXX Engineering Division
XXX Commission on Water Resource Management
XXX Office of Conservation and Coastal Lands
XXX Land-Oahu District Land Office

FROM: Dierdre S. Mamiya, Administrator
Land Division

SUBJECT: Environmental Assessment Pre-Consultation
Project: Saint Louis Heights Sewer System Improvements
Location: Honolulu. Island of Oahu, Hawaii
Consultant: Wilson Okamoto Corporation (Rodney Funakoshi)
Agency: C&CoH Department of Design and Construction

Please review the attached letter dated March 1, 2004 (project description) pertaining to the proposed project and submit your comment (if any) to us on division letterhead signed and dated by the suspense date. If we do not receive a response by the suspense date, we will assume there are no comments.

Should you need more time to review this matter, please contact Nicholas A. Vaccaro at 587-0384.

No comments.

Comments attached.

Date: 3-12-04

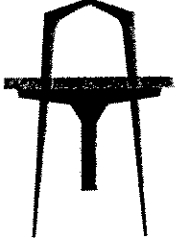
Signed:

Division: Land

Name: Robert M. Long

6537-01
April 16, 2004

**WILSON
OKAMOTO
CORPORATION**



**ENGINEERS
PLANNERS**

1907 S. BERETANIA ST.
SUITE 400
HONOLULU, HI 96826
PH. (808)946-2277
FAX: (808)946-2253

Ms. Diedre S. Mamiya, Administrator
Land Division
Department of Land and Natural Resources
P.O. Box 621
Honolulu, Hawaii 96809

Subject: Environmental Assessment Pre-Consultation
Saint Louis Heights Sewer System Improvements
Honolulu, Oahu, Hawaii

Dear Ms. Mamiya:

Thank you for forwarding comments from the Department of Land and Natural Resources Divisions regarding the subject project. We acknowledge that as noted by the Engineering Division, the project site is in flood hazard zone "X". We also acknowledge comments from the Division of State Parks and have replied to them under a separate letter.

We appreciate your participation in the environmental review process.

Sincerely,

Rodney Funakoshi, AICP
Project Manager

BOARD OF WATER SUPPLY

CITY AND COUNTY OF HONOLULU
630 SOUTH BERETANIA STREET
HONOLULU, HI 96843



March 17, 2004

JEREMY HARRIS, Mayor

EDDIE FLORES, JR., Chairman
CHARLES A. STED, Vice-Chairman
HERBERT S.K. KAOPUA, SR.
DAROLYN H. LENDIO

RODNEY K. HARAGA, Ex-Officio
LARRY J. LEOPARDI, Ex-Officio

CLIFFORD S. JAMILE
Manager and Chief Engineer

DONNA FAY K. KIYOSAKI
Deputy Manager and Chief Engineer

Mr. Rodney Funakoshi
Wilson Okamoto Corporation
1907 South Beretania Street, Suite 400
Honolulu, Hawaii 96826

RECEIVED
MAR 19 2004

WILSON OKAMOTO CORPORATION

Dear Mr. Funakoshi:

Subject: Your Letter of March 1, 2004 on the Environmental Assessment Pre-Assessment Consultation for the Saint Louis Heights Sewer System Improvements

Thank you for the opportunity to comment on the proposed project.

The construction drawings should be submitted for our review and approval.

The construction schedule should be coordinated to minimize impact to the water system.

If you have any questions, please contact Joseph Kaakua at 748-5442.

Very truly yours,

for CLIFFORD S. JAMILE
Manager and Chief Engineer

6537-01
April 16, 2004

**WILSON
OKAMOTO
CORPORATION**



**ENGINEERS
PLANNERS**

1907 S. BERETANIA ST.
SUITE 400
HONOLULU, HI 96826
PH. (808)946-2277
FAX: (808)946-2253

Mr. Clifford S. Jamile, Manager and Chief Engineer
Honolulu Board of Water Supply
City and County of Honolulu
630 South Beretania Street
Honolulu, Hawaii 96843

Subject: Environmental Assessment Pre-Consultation
Saint Louis Heights Sewer System Improvements
Honolulu, Oahu, Hawaii

Dear Mr. Jamile:

Thank you for your letter of March 17, 2004 commenting on the subject project. As requested, the construction drawings will be submitted for your review and approval and we will coordinate the construction schedule to minimize impact to the water system.

We appreciate your participation in the environmental review process.

Sincerely,

A handwritten signature in cursive script that reads "Rodney Funakoshi".

Rodney Funakoshi, AICP
Project Manager

DEPARTMENT OF FACILITY MAINTENANCE

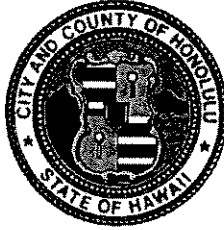
CITY AND COUNTY OF HONOLULU

1000 ULUOHIA STREET, KAPOLEI HALE, SUITE 215, KAPOLEI, HAWAII 96707
TELEPHONE : (808) 692-5054 FAX: (808) 692-5857

RECEIVED
MAR 7 2004

WILSON OKAMOTO CORPORATION

JEREMY HARRIS
MAYOR



LARRY J. LEOPARDI, P.E.
DIRECTOR AND CHIEF ENGINEER

ALVIN K. C. AU
DEPUTY DIRECTOR

IN REPLY REFER TO:
DRM 04-224

March 8, 2004

Mr. Rodney Funakoshi
Wilson Okamoto Corporation
1907 South Beretania Street, Suite 400
Honolulu, Hawaii 96826

Dear Mr. Funakoshi:

Subject: **Environmental Assessment (EA) Pre-Assessment Consultation
Saint Louis Heights Sewer System Improvements
Honolulu, Oahu, Hawaii**

Thank you for the opportunity to comment on the subject project. The Department of Facility Maintenance (DFM) has no comments to offer at this time. However, DFM would like to review the EA when prepared.

Should you have any questions, please call me at 523-4472.

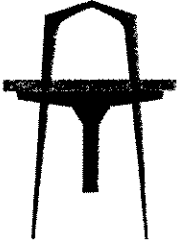
Very truly yours,

A handwritten signature in cursive script, appearing to read "Larry Leopardi".

LARRY LEOPARDI, P.E.
Director and Chief Engineer

6537-01
April 16 2004

**WILSON
OKAMOTO
CORPORATION**



**ENGINEERS
PLANNERS**

1907 S. BERETANIA ST.
SUITE 400
HONOLULU, HI 96826
PH. (808)946-2277
FAX: (808)946-2253

Mr. Larry Leopardi, P.E., Director and Chief Engineer
Department of Facility Maintenance
City and County of Honolulu
1000 Uluohia Street, Suite 215
Kapolei, Hawaii 96707

Subject: Environmental Assessment Pre-Consultation
Saint Louis Heights Sewer System Improvements
Honolulu, Oahu, Hawaii

Dear Mr. Leopardi:

Thank you for your letter of March 8, 2004 (Ref. DRM 04-224) indicating that you have no comments regarding the subject project at this time. As requested, we will transmit a copy of the project's Draft Environmental Assessment to you when it is prepared.

We appreciate your participation in the environmental review process.

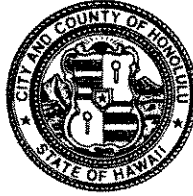
Sincerely,

A handwritten signature in cursive script, appearing to read "Rodney Funakoshi".

Rodney Funakoshi, AICP
Project Manager

DEPARTMENT OF PARKS AND RECREATION
CITY AND COUNTY OF HONOLULU

650 SOUTH KING STREET, 10TH FLOOR • HONOLULU, HAWAII 96813
TELEPHONE: (808) 523-4182 • FAX: (808) 527-5725 • INTERNET: www.co.honolulu.hi.us



JEREMY HARRIS
MAYOR

WILLIAM D. BALFOUR, JR.
DIRECTOR

EDWARD T. "SKIPPA" DIAZ
DEPUTY DIRECTOR

March 16, 2004

Wilson Okamoto Corporation
Attention: Mr. Rodney Funakoshi, AICP
Project Manager
1907 S. Beretania St., Suite 400
Honolulu, Hawaii 96826

RECEIVED
MAR 18 2004

WILSON OKAMOTO CORPORATION

Dear Sir:

Subject: Environmental Assessment Pre-Assessment Consultation
Saint Louis Heights Sewer System Improvements
Honolulu, Oahu, Hawaii

Thank you for the opportunity to review and comment on the Pre-Assessment Consultation relating to the Saint Louis Heights Sewer System Improvements.

The Department of Parks and Recreation has no comment on the proposed project.

Should you have any questions, please contact Mr. John Reid, Planner, at 692-5454.

Sincerely,

A handwritten signature in black ink, appearing to read "W.D. Balfour, Jr.", is written over the typed name.

WILLIAM D. BALFOUR, JR.
Director

WDB:mk
(53837)

6537-01
April 16, 2004

**WILSON
OKAMOTO
CORPORATION**



**ENGINEERS
PLANNERS**

1907 S. BERETANIA ST.
SUITE 400
HONOLULU, HI 96826
PH. (808)946-2277
FAX: (808)946-2253

Mr. William D. Balfour, Jr., Director
Department of Parks and Recreation
City and County of Honolulu
650 South King Street, 10th Floor
Honolulu, Hawaii 96813

Subject: Environmental Assessment Pre-Consultation
Saint Louis Heights Sewer System Improvements
Honolulu, Oahu, Hawaii

Dear Mr. Balfour:

Thank you for your letter of March 16, 2004 indicating that you have no comments regarding the subject project at this time.

We appreciate your participation in the environmental review process.

Sincerely,

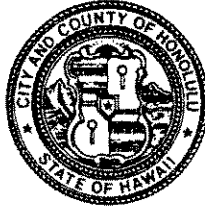
A handwritten signature in cursive script, appearing to read "Rodney Funakoshi". The signature is written in a dark ink and is positioned above the printed name.

Rodney Funakoshi, AICP
Project Manager

DEPARTMENT OF PLANNING AND PERMITTING
CITY AND COUNTY OF HONOLULU

650 SOUTH KING STREET, 7TH FLOOR
HONOLULU, HAWAII 96813
Phone: (808) 523-4414 • Fax: (808) 527-6743
Web site: www.co.honolulu.hi.us

JEREMY HARRIS
Mayor



ERIC G. CRISPIN, AIA
Director

BARBARA KIM STANTON
Deputy Director

KATHY SOKUGAWA
Acting Deputy Director

04WWB035 (SG)

March 25, 2004

Mr. Rodney Funakoshi
Wilson Okamoto Corporation
1907 South Beretania Street, Suite 400
Honolulu, Hawaii 96826

RECEIVED
MAR 26 2004
WILSON OKAMOTO CORPORATION

Dear Mr. Funakoshi:

ENVIRONMENTAL ASSESSMENT (EA) PRE-ASSESSMENT CONSULTATION
SAINT LOUIS HEIGHTS SEWER SYSTEM IMPROVEMENTS

This is in response to your March 1, 2004 letter requesting comments on the proposed improvements to the Saint Louis Heights municipal sewer system. The EA should address appropriate best management practices to prevent sediment from entering into the City's drainage system. Also, road resurfacing of open trenches should be done in accordance with the Administration's policy. Please consult with my Civil Engineering Branch for the latest requirement.

This project does not require a Development Plan Public Facilities (DPPF) Map amendment, since it involves repair and replacement work that will not significantly increase system capacity, expand service areas, or permit significant new development or redevelopment. When the DPPF Map is replaced shortly, the Public Infrastructure Map (PIM) will also not need to be revised since sewer lines are not a type of public improvement shown on the PIM.

Lastly, the location name "Kalaepohaku Ridge" is misspelled.

If you have any questions, please contact Mr. Scott Gushi of the Wastewater Branch at 523-4886.

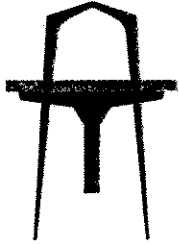
Sincerely yours,

For *Dennis M. Nishimura*
ERIC G. CRISPIN, AIA
Director of Planning and Permitting

EGC:dl
[288393]

6537-01
April 16, 2004

**WILSON
OKAMOTO
CORPORATION**



**ENGINEERS
PLANNERS**

1907 S. BERETANIA ST.
SUITE 400
HONOLULU, HI 96826
PH. (808)946-2277
FAX: (808)946-2253

Mr. Eric G. Crispin, AIA, Director
Department of Planning and Permitting
City and County of Honolulu
650 South King Street, 7th Floor
Honolulu, Hawaii 96813

Subject: Environmental Assessment Pre-Consultation
Saint Louis Heights Sewer System Improvements
Honolulu, Oahu, Hawaii

Dear Mr. Crispin:

Thank you for your letter of March 25, 2004 commenting on the subject project. As requested the Draft Environmental Assessment will discuss best management practices to prevent sediment from entering the City's Drainage System. In addition, all road resurfacing will be done in accordance with City requirements.

We appreciate your participation in the environmental review process.

Sincerely,

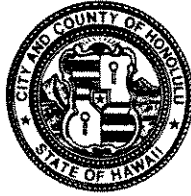


Rodney Funakoshi, AICP
Project Manager

DEPARTMENT OF TRANSPORTATION SERVICES
CITY AND COUNTY OF HONOLULU

650 SOUTH KING STREET, 3RD FLOOR • HONOLULU, HAWAII 96813
TELEPHONE: (808) 523-4529 • FAX: (808) 523-4730 • INTERNET: www.co.honolulu.hi.us

JEREMY HARRIS
MAYOR



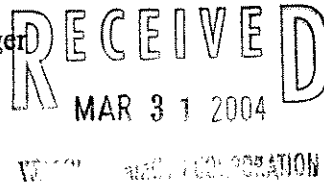
CHERYL D. SOON
DIRECTOR

GEORGE "KEOKI" MIYAMOTO
DEPUTY DIRECTOR

TP3/04-53768R

March 25, 2004

Mr. Rodney Funakoshi, AICP, Project Manager
Wilson Okamoto Corporation
1907 South Beretania Street, Suite 400
Honolulu, Hawaii 96826



Dear Mr. Funakoshi:

Subject: Saint Louis Heights Sewer System Improvements

In response to your March 1, 2004 letter, we have reviewed the project information provided. The following comments are provided for your use:

1. Traffic/access impacts of the project need to be determined, identified and addressed in the draft environmental assessment (EA). An approved traffic control plan for the sewer project should be required as the roadway is narrow and the terrain steep. The draft EA should discuss how access to private property would be provided when work is in progress.
2. The need for plan approval by the Department of Planning and Permitting and a street usage permit should be verified.

Should you have any questions regarding these comments, please contact Faith Miyamoto of the Transportation Planning Division at 527-6976.

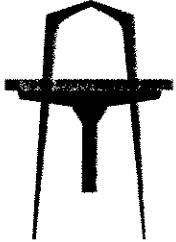
Sincerely,

A handwritten signature in cursive script, appearing to read "Cheryl D. Soon".

CHERYL D. SOON
Director

6537-01
April 16, 2004

**WILSON
OKAMOTO
CORPORATION**



**ENGINEERS
PLANNERS**

1907 S. BERETANIA ST.
SUITE 400
HONOLULU, HI 96826
PH. (808)946-2277
FAX: (808)946-2253

Ms. Cheryl D. Soon, Director
Department of Transportation Services
City and County of Honolulu
650 South King Street, 3rd Floor
Honolulu, Hawaii 96813

Subject: Environmental Assessment Pre-Consultation
Saint Louis Heights Sewer System Improvements
Honolulu, Oahu, Hawaii

Dear Ms. Soon:

Thank you for your letter of March 25, 2004 commenting on the subject project. As requested, the Draft Environmental Assessment will discuss traffic impacts and access to private property during construction. In addition, a traffic control plan will be prepared for the project and a street usage permit will be procured prior to construction. Finally, the project's plans will be submitted to the Department of Planning and Permitting for review and approval.

We appreciate your participation in the environmental review process.

Sincerely,

A handwritten signature in cursive script, appearing to read "Rodney Funakoshi".

Rodney Funakoshi, AICP
Project Manager

**COMMENTS RECEIVED ON THE
DRAFT ENVIRONMENTAL ASSESSMENT**



DEPARTMENT OF THE ARMY
U.S. ARMY ENGINEER DISTRICT, HONOLULU
BUILDING 223
FORT SHAFTER, HAWAII 96858-5440

REPLY TO
ATTENTION OF: CEPOH-EC-T

September 23, 2004

Civil Works Technical Branch

Mr. Dean Minakami
Wilson Okamoto Corporation
1907 South Beretania Street, Suite 400
Honolulu, Hawaii 96826

RECEIVED
SEP 24 2004
WILSON OKAMOTO CORPORATION

Dear Mr. Minakami:

Thank you for the opportunity to review and comment on the Draft Environmental Assessment (DEA) for the Saint Louis Heights Sewer Rehabilitation Project, Honolulu, Oahu (various parcels). The following comments are provided in accordance with Corps of Engineers authorities to provide flood hazard information and to issue Department of the Army (DA) permits.

a. Based on the information provided, a DA permit will not be required for the project.

b. The flood hazard information provided on page 7-2 of the DEA is correct.

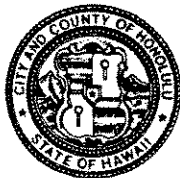
Should you require additional information, please contact Ms. Jessie Dobinchick of my staff at (808) 438-8876.

Sincerely,

James Pennaz, P.E.
Chief, Civil Works
Technical Branch

DEPARTMENT OF DESIGN AND CONSTRUCTION
CITY AND COUNTY OF HONOLULU

650 SOUTH KING STREET, 11TH FLOOR
HONOLULU, HAWAII 96813
Phone: (808) 523-4564 • Fax: (808) 523-4567
Web site: www.honolulu.gov



MUFI HANNEMANN
MAYOR

WAYNE M. HASHIRO, P.E.
ACTING DIRECTOR

EUGENE C. LEE, P.E.
DEPUTY DIRECTOR

WW.PDW 05-033

March 3, 2005

Mr. James Pennaz, P.E., Chief
Civil Works Technical Branch
U.S. Army Engineer District, Honolulu
Building 223
Fort Shafter, Hawaii 96858-5440

Attn: CEPOH-EC-T

Dear Mr. Pennaz:

Subject: Draft Environmental Assessment
Saint Louis Heights Sewer System Improvements
Honolulu, Oahu, Hawaii

Thank you for your letter of September 23, 2004 commenting that a U.S. Army Corps of Engineers permit will not be required for the subject project and that the flood hazard information in the Draft Environmental Assessment is correct.

We appreciate your participation in the environmental review process.

If there are any questions, please contact Wes Yokoyama at 527-6904.

Very truly yours.

A handwritten signature in cursive script, reading "Wayne M. Hashiro".

WAYNE M. HASHIRO, P.E.
Acting Director

cc: Wilson Okamoto Corporation

LINDA LINGLE
GOVERNOR OF HAWAII



CHIYOME L. FUKINO, M.D.
DIRECTOR OF HEALTH

STATE OF HAWAII
DEPARTMENT OF HEALTH

P.O. BOX 3378
HONOLULU, HAWAII 96801

In reply, please refer to:
EMD / WB

September 16, 2004

O3 3 050.wpd
W11 wb040798

Mr. Dean Minakami, AICP
Wilson Okamoto Corporation
1907 S. Beretania Street, Suite 400
Honolulu, Hawaii 96826

RECEIVED
SEP 20 2004

WILSON OKAMOTO CORPORATION

Dear Mr. Minakami:

Subject: **Draft Environmental Assessment**
St. Louis Heights
Sewer System Improvements
St. Louis Heights, Oahu, Hawaii
TMK: (1) 3-3-050 to 3-3-055; 3-3-057 to 3-3-061; and 3-4-031 to 3-4-032

Thank you for allowing the opportunity to review the environmental assessment for the subject project which proposes to replace or rehabilitate sewer pipes and manholes in the Saint Louis Heights neighborhood.

We have no objections to the sewer system improvements as it will have long-term benefits for the residences on St. Louis Heights and will improve the reliability of the wastewater system to the Sand Island Wastewater Treatment Facility.

All wastewater plans must conform to applicable provisions of the Department of Health's Administrative Rules, Chapter 11-62, "Wastewater Systems." We do reserve the right to review the detailed wastewater plans for conformance to applicable rules.

Should you have any questions, please contact the Planning & Design Section of our Branch at 586-4294.

Sincerely,

Handwritten signature of Harold K. Yee.

HAROLD K. YEE, P.E., CHIEF
Wastewater Branch

LNKM:erm

DEPARTMENT OF DESIGN AND CONSTRUCTION
CITY AND COUNTY OF HONOLULU

650 SOUTH KING STREET, 11TH FLOOR
HONOLULU, HAWAII 96813
Phone: (808) 523-4564 • Fax: (808) 523-4567
Web site: www.honolulu.gov



MUFI HANNEMANN
MAYOR

WAYNE M. HASHIRO, P.E.
ACTING DIRECTOR

EUGENE C. LEE, P.E.
DEPUTY DIRECTOR

WW.PDW 05-036

March 3, 2005

Mr. Harold K. Yee, P.E., Chief
Wastewater Branch
Department of Health
State of Hawaii
P.O. Box 3378
Honolulu, Hawaii 96801

Dear Mr. Yee:

Subject: Draft Environmental Assessment
Saint Louis Heights Sewer System Improvements
Honolulu, Oahu, Hawaii

Thank you for your letter of September 16, 2004 (W11 wb040798) stating that you have no objections to the subject project. We acknowledge that all wastewater plans must conform to applicable provisions of the Department of Health's Administrative Rules, Chapter 11-62, "Wastewater Systems" and that you reserve the right to review the detailed wastewater plans for conformance to applicable rules.

We appreciate your participation in the environmental review process.

If there are any questions, please contact Wes Yokoyama at 527-6904.

Very truly yours,

A handwritten signature in cursive script, appearing to read "Wayne M. Hashiro".

WAYNE M. HASHIRO, P.E.
Acting Director

cc: Wilson Okamoto Corporation

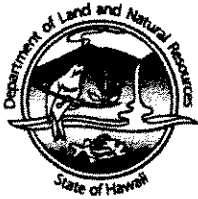
LINDA LINGLE
GOVERNOR OF HAWAII



PETER T. YOUNG
CHAIRPERSON
BOARD OF LAND AND NATURAL RESOURCES
COMMISSION ON WATER RESOURCE MANAGEMENT

DAN DAVIDSON
DEPUTY DIRECTOR - LAND

YVONNE Y. IZU
DEPUTY DIRECTOR - WATER



STATE OF HAWAII
DEPARTMENT OF LAND AND NATURAL RESOURCES

HISTORIC PRESERVATION DIVISION
KAKUHIHEWA BUILDING, ROOM 555
601 KAMOKILA BOULEVARD
KAPOLEI, HAWAII 96707

AQUATIC RESOURCES
BOATING AND OCEAN RECREATION
BUREAU OF CONVEYANCES
COMMISSION ON WATER RESOURCE MANAGEMENT
CONSERVATION AND COASTAL LANDS
CONSERVATION AND RESOURCES ENFORCEMENT
ENGINEERING
FORESTRY AND WILDLIFE
HISTORIC PRESERVATION
KAHOOLAWE ISLAND RESERVE COMMISSION
LAND
STATE PARKS

RECEIVED
SEP 16 2004

WILSON OKAMOTO CORPORATION

HAWAII HISTORIC PRESERVATION
DIVISION REVIEW

Applicant/Agency: Raj Rath

Log No:2004.2776
Doc No:0409EJ10

Address: City and County Of Honolulu
Department of Design and Construction
650 S. King Street, 14th Flr.
Honolulu, HI 96813

SUBJECT: Chapter 6E-8 Historic Preservation Review-Draft Environmental
Assessment Saint Louis Heights Sewer Rehabilitation

Ahupua'a: Kalaepohaku (Honolulu)
District, Island: Kona, O'ahu
TMK: (1)-3-3-050 055, 057 to 061; 3-4-031 to 032

1. This project has not gone through the historic preservation review process. Please submit documentation _____
2. This project has already gone through the historic preservation review process.
 - a. mitigation has been completed
 - b. other Our previous "no historic properties affected" comments are included in the DEA SHPD Log 2004.0790
3. We have not been consulted on this undertaking, however we believe there are no historic properties present, because:
 - a) intensive cultivation has altered the land
 - b) residential development/urbanization has altered the land
 - c) previous grubbing/grading has altered the land
 - d) an acceptable archaeological assessment or inventory survey found no historic properties
 - e) other:

Thus, we believe that "no historic properties will be affected" by this undertaking.

Staff: Stacy Fordane Date: September 15, 2004

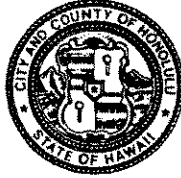
Title: Assistant Archaeologist, O'ahu Island

EJ: sky

c: Ms. Genevieve Salmonson, Director, OEQC, 235 S. Beretania Street, Suite 702,
Honolulu, HI 96813
~~Dean Minakami, Wilson Okamoto Corporation, 1907 S. Beretania Street, Suite 400,
Honolulu, HI 96826~~

DEPARTMENT OF DESIGN AND CONSTRUCTION
CITY AND COUNTY OF HONOLULU

650 SOUTH KING STREET, 11TH FLOOR
HONOLULU, HAWAII 96813
Phone: (808) 523-4564 • Fax: (808) 523-4567
Web site: www.honolulu.gov



MUFI HANNEMANN
MAYOR

WAYNE M. HASHIRO, P.E.
ACTING DIRECTOR

EUGENE C. LEE, P.E.
DEPUTY DIRECTOR

WW.PDW 05-042

March 3, 2005

Ms. Melanie A. Chinen, Administrator
Department of Land and Natural Resources
Historic Preservation Division
State of Hawaii
601 Kamokila Boulevard, Room 555
Kapolei, Hawaii 96707

Dear Ms. Chinen:

Subject: Draft Environmental Assessment
Saint Louis Heights Sewer System Improvements
Honolulu, Oahu, Hawaii

Thank you for your letter of September 15, 2004 (Doc No:0409EJ10) commenting on the subject Draft Environmental Assessment and stating that you believe that no historic properties will be affected by the project.

We appreciate your participation in the environmental review process.

If you have any questions, please contact Wes Yokoyama at 527-6904.

Very truly yours,

A handwritten signature in cursive script, appearing to read "Wayne M. Hashiro".

WAYNE M. HASHIRO, P.E.
Acting Director

cc: Wilson Okamoto Corporation

LINDA LINGLE
GOVERNOR OF HAWAII



STATE OF HAWAII
DEPARTMENT OF LAND AND NATURAL RESOURCES

DIVISION OF STATE PARKS
POST OFFICE BOX 621
HONOLULU, HAWAII 96809

PETER T. YOUNG
CHAIRPERSON
BOARD OF LAND AND NATURAL RESOURCES
COMMISSION ON WATER RESOURCE MANAGEMENT

DAN DAVIDSON
DEPUTY DIRECTOR - LAND

YVONNE Y. IZU
DEPUTY DIRECTOR - WATER

AQUATIC RESOURCES
BOATING AND OCEAN RECREATION
BUREAU OF CONVEYANCES
COMMISSION ON WATER RESOURCE MANAGEMENT
CONSERVATION AND COASTAL LANDS
CONSERVATION AND RESOURCES ENFORCEMENT
ENGINEERING
FORESTRY AND WILDLIFE
HISTORIC PRESERVATION
KAHOOLAWE ISLAND RESERVE COMMISSION
LAND
STATE PARKS

September 21, 2004

City and County of Honolulu
Department of Design and Construction
650 S. King St., 14th Floor
Honolulu, Hawai'i 96813
Attn: Mr. Raj Rath

RECEIVED
SEP 24 2004

WILSON OKAMOTO CORPORATION

Dear Mr. Rath:

Thank you for the opportunity to review the draft environmental assessment for the Saint Louis Heights Sewer System Improvements.

We were particularly interested in the project's impacts regarding access to Wa'ahila Ridge State Recreation Area. Based on your analysis and mitigation plan, we do not have concerns with the proposed action.

Very truly yours,

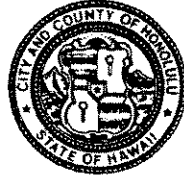
A handwritten signature in cursive script, appearing to read "Daniel S. Quinn".

Daniel S. Quinn, Administrator

copies to: G. Salmonson, OEQC
D. Minakami, Wilson Okamoto Corporation

DEPARTMENT OF DESIGN AND CONSTRUCTION
CITY AND COUNTY OF HONOLULU

650 SOUTH KING STREET, 11TH FLOOR
HONOLULU, HAWAII 96813
Phone: (808) 523-4564 • Fax: (808) 523-4567
Web site: www.honolulu.gov



MUFI HANNEMANN
MAYOR

WAYNE M. HASHIRO, P.E.
ACTING DIRECTOR

EUGENE C. LEE, P.E.
DEPUTY DIRECTOR

WW.PDW 05-043

March 3, 2005

Mr. Daniel S. Quinn, Administrator
Division of State Parks
Department of Land and Natural Resources
State of Hawaii
P.O. Box 621
Honolulu, Hawaii 96809

Dear Mr. Quinn:

Subject: Draft Environmental Assessment
Saint Louis Heights Sewer System Improvements
Honolulu, Oahu, Hawaii

Thank you for your letter of September 21, 2004 commenting on the subject Draft Environmental Assessment and indicating that your concerns relating to access to Wa'ahila Ridge State Recreation Area have been addressed.

We appreciate your participation in the environmental review process.

If you have any questions, please contact Wes Yokoyama at 527-6904.

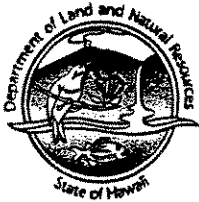
Very truly yours,

A handwritten signature in cursive script, appearing to read "Wayne M. Hashiro".

WAYNE M. HASHIRO, P.E.
Acting Director

cc: Wilson Okamoto Corporation

LINDA LINGLE
GOVERNOR OF HAWAII



STATE OF HAWAII
DEPARTMENT OF LAND AND NATURAL RESOURCES
LAND DIVISION

POST OFFICE BOX 621
HONOLULU, HAWAII 96809

September 24, 2004

PETER T. YOUNG
CHAIRPERSON
BOARD OF LAND AND NATURAL RESOURCES
COMMISSION ON WATER RESOURCE MANAGEMENT

DAN DAVIDSON
DEPUTY DIRECTOR - LAND

YVONNE Y. IZU
DEPUTY DIRECTOR - WATER

AQUATIC RESOURCES
BOATING AND OCEAN RECREATION
BUREAU OF CONVEYANCES
COMMISSION ON WATER RESOURCE MANAGEMENT
CONSERVATION AND COASTAL LANDS
CONSERVATION AND RESOURCES ENFORCEMENT
ENGINEERING
FORESTRY AND WILDLIFE
HISTORIC PRESERVATION
KAHOOLAWE ISLAND RESERVE COMMISSION
LAND
STATE PARKS

LOUISSEWERDEA.RCM
LD-NAV

Wilson Okamoto Corporation
Dean Minakami
1907 Beretania Street, Suite 400
Honolulu, Hawaii 96826

RECEIVED
SEP 28 2004

WILSON OKAMOTO CORPORATION

Dear Mr. Minakami:

SUBJECT: Draft Environmental Assessment
Project: Saint Louis Heights Sewer System Improvements
Location: Honolulu, Island of Oahu, Hawaii
Authority: C&CoH Department of Design and Construction

Thank you for the opportunity to review and comment on the subject matter.

A copy of the document pertaining to the subject matter was transmitted or made available to the following Department of Land and Natural Resources' Divisions for their review and comment.

- Division of Forestry & Wildlife
- Division of State Parks
- Engineering Division
- Commission on Water Resource Management
- Office of Conservation and Coastal Lands
- Land-Oahu District Land Office

Based on the attached responses, the Department of Land and Natural Resources has no comment to offer on the subject matter.

Should you have any questions, please contact Nicholas A. Vaccaro of the Land Division Support Services Branch at 587-0384.

Very truly yours,

A handwritten signature in black ink, appearing to read "Dierdre S. Mamiya".

DIERDRE S. MAMIYA
Administrator

C: ODLO

LINDA LINGLE
GOVERNOR OF HAWAII

RECEIVED



RECEIVED
LAND DIVISION

PETER T. YOUNG
CHAIRPERSON
BOARD OF LAND AND NATURAL RESOURCES
COMMISSION ON WATER RESOURCE MANAGEMENT

DAN DAVIDSON
DEPUTY DIRECTOR - LAND

YVONNE Y. IZU
DEPUTY DIRECTOR - WATER



04 SEP 14 P12:53

STATE OF HAWAII
DEPARTMENT OF LAND AND NATURAL RESOURCES
LAND DIVISION

POST OFFICE BOX 621
HONOLULU, HAWAII 96809
September 13, 2004

AQUATIC RESOURCES
BOATING AND OCEAN RECREATION
BUREAU OF CONVEYANCES
COMMISSION ON WATER RESOURCE MANAGEMENT
CONSERVATION AND COASTAL LANDS
CONSERVATION AND RESOURCES ENFORCEMENT
ENGINEERING
FORESTRY AND WILDLIFE
HISTORIC PRESERVATION
KAHOOLAWE ISLAND RESERVE COMMISSION
LAND
STATE PARKS

LD/NAV
LOUISSEWERDEA.CMT

Suspense Date: 9/20/04

MEMORANDUM:

From:

- TO:
- Division of Aquatic Resources
 - XXX Division of Forestry & Wildlife
 - XXX Division of State Parks
 - Division of Boating and Ocean Recreation
 - XXX Engineering Division
 - XXX Commission on Water Resource Management
 - XXX Office of Conservation and Coastal Lands
 - XXX Land-Oahu District Land Office

To:

FROM: Dierdre S. Mamiya, Administrator
Land Division

SUBJECT: Draft Environmental Assessment
 Project: Saint Louis Heights Sewer System Improvements
 Location: Honolulu. Island of Oahu, Hawaii
 Consultant: Wilson Okamoto Corporation (Rodney Funakoshi)
 Agency: C&CoH Department of Design and Construction

Please review the subject DEA submit your comment (if any) to us on division letterhead signed and dated by the suspense date. If we do not receive a response by the suspense date, we will assume there are no comments.

Note: One copy of the document is available for your review in the Land Division Office, Room 220.

Should you need more time to review this matter, please contact Nicholas A. Vaccaro at 587-0384.

No comments.

Comments attached.

Date: 9/14/04

Signed: W. Poy Hardy

Division: CWEM

Name: Poy Hardy

LINDA LINGLE FIFED
GOVERNOR OF HAWAII
LAND DIVISION



PETER T. YOUNG
CHAIRPERSON
BOARD OF LAND AND NATURAL RESOURCES
COMMISSION ON WATER RESOURCE MANAGEMENT

DAN DAVIDSON
DEPUTY DIRECTOR - LAND

YVONNE Y. IZU
DEPUTY DIRECTOR - WATER



STATE OF HAWAII
DEPARTMENT OF LAND AND NATURAL RESOURCES
LAND DIVISION

POST OFFICE BOX 621
HONOLULU, HAWAII 96809
September 13, 2004

AQUATIC RESOURCES
BOATING AND OCEAN RECREATION
BUREAU OF CONVEYANCES
COMMISSION ON WATER RESOURCE MANAGEMENT
CONSERVATION AND COASTAL LANDS
CONSERVATION AND RESOURCES ENFORCEMENT
ENGINEERING
FORESTRY AND WILDLIFE
HISTORIC PRESERVATION
KAHOOLAWE ISLAND RESERVE COMMISSION
LAND
STATE PARKS

LD/NAV
LOUISSEWERDEA.CMT

Suspense Date: 9/20/04

MEMORANDUM:

TO: Division of Aquatic Resources
XXX Division of Forestry & Wildlife
XXX Division of State Parks
Division of Boating and Ocean Recreation
XXX Engineering Division
XXX Commission on Water Resource Management
XXX Office of Conservation and Coastal Lands
XXX Land-Oahu District Land Office

FROM: Dierdre S. Mamiya, Administrator
Land Division

SUBJECT: Draft Environmental Assessment
Project: Saint Louis Heights Sewer System Improvements
Location: Honolulu, Island of Oahu, Hawaii
Consultant: Wilson Okamoto Corporation (Rodney Funakoshi)
Agency: C&CoH Department of Design and Construction

Please review the subject DEA submit your comment (if any) to us on division letterhead signed and dated by the suspense date. If we do not receive a response by the suspense date, we will assume there are no comments.

Note: One copy of the document is available for your review in the Land Division Office, Room 220.

Should you need more time to review this matter, please contact Nicholas A. Vaccaro at 587-0384.

No comments.

Comments attached.

Date: 9-17-04

Signed:

Division: Land

Name: Robert M. Long
RM

LINDA LINGLE
GOVERNOR OF HAWAII

RECEIVED
LAND DIVISION



2004 SEP 20 A 10:31



STATE OF HAWAII
DEPARTMENT OF LAND AND NATURAL RESOURCES
LAND DIVISION
POST OFFICE BOX 621
HONOLULU, HAWAII 96809
September 13, 2004

PETER T. YOUNG
CHAIRPERSON
BOARD OF LAND AND NATURAL RESOURCES
COMMISSION ON WATER RESOURCE MANAGEMENT

DAN DAVIDSON
DEPUTY DIRECTOR - LAND

YVONNE Y. IZU
DEPUTY DIRECTOR - WATER

AQUATIC RESOURCES
BOATING AND OCEAN RECREATION
BUREAU OF CONVEYANCES
COMMISSION ON WATER RESOURCE MANAGEMENT
CONSERVATION AND COASTAL LANDS
CONSERVATION AND RESOURCES ENFORCEMENT
ENGINEERING
FORESTRY AND WILDLIFE
HISTORIC PRESERVATION
KAHOOLAWE ISLAND RESERVE COMMISSION
LAND
STATE PARKS

LD/NAV
LOUISSEWERDEA.CMT

Suspense Date: 9/20/04

MEMORANDUM:

TO: Division of Aquatic Resources
XXX Division of Forestry & Wildlife
XXX Division of State Parks
Division of Boating and Ocean Recreation
XXX Engineering Division
XXX Commission on Water Resource Management
XXX Office of Conservation and Coastal Lands
XXX Land-Oahu District Land Office

FROM: Dierdre S. Mamiya, Administrator
Land Division

SUBJECT: Draft Environmental Assessment
Project: Saint Louis Heights Sewer System Improvements
Location: Honolulu, Island of Oahu, Hawaii
Consultant: Wilson Okamoto Corporation (Rodney Funakoshi)
Agency: C&CoH Department of Design and Construction

Please review the subject DEA submit your comment (if any) to us on division letterhead signed and dated by the suspense date. If we do not receive a response by the suspense date, we will assume there are no comments.

Note: One copy of the document is available for your review in the Land Division Office, Room 220.

Should you need more time to review this matter, please contact Nicholas A. Vaccaro at 587-0384.

additional
 No comments. *Our comments dated 8/23/04 (copy attached) still apply.* () Comments attached.

Date: 9/16/04

Signed: *Eric T. Hirano*

Division: Engineering

Name: ERIC T. HIRANO, CHIEF ENGINEER

DEPARTMENT OF LAND AND NATURAL RESOURCES
ENGINEERING DIVISION

LANAV

Ref.: LOUISSEWER.cmt

COMMENTS

- () We confirm that the project site, according to the Flood Insurance Rate Map (FIRM), is located in Flood Zone ____.
- ✓ Please take note that the project site, according to the Flood Insurance Rate Map (FIRM), is located in Zone X.
- () Please note that the correct Flood Zone Designation for the project site according to the Flood Insurance Rate Map (FIRM) is ____.
- () Please note that the project must comply with the rules and regulations of the National Flood Insurance Program (NFIP) presented in Title 44 of the Code of Federal Regulations (44CFR), whenever development within a Special Flood Hazard Area is undertaken. If there are any questions, please contact the State NFIP Coordinator, Ms. Carol Tyau-Beam, of the Department of Land and Natural Resources, Engineering Division at (808) 587-0267.

Please be advised that 44CFR indicates the minimum standards set forth by the NFIP. Your Community's local flood ordinance may prove to be more restrictive and thus take precedence over the minimum NFIP standards. If there are questions regarding the local flood ordinances, please contact the applicable County NFIP Coordinators below:

- () Mr. Robert Sumimoto at (808) 523-4254 or Mr. Mario Siu Li at (808) 523-4247 of the City and County of Honolulu, Department of Planning and Permitting.
 - () Mr. Kelly Gomes at (808) 961-8327 (Hilo) or Mr. Kiran Emler at (808) 327-3530 (Kona) of the County of Hawaii, Department of Public Works.
 - () Mr. Francis Cerizo at (808) 270-7771 of the County of Maui, Department of Planning.
 - () Mr. Mario Antonio at (808) 241-6620 of the County of Kauai, Department of Public Works.
- () The applicant should include project water demands and infrastructure required to meet water demands. Please note that the implementation of any State-sponsored projects requiring water service from the Honolulu Board of Water Supply system must first obtain water allocation credits from the Engineering Division before it can receive a building permit and/or water meter.
 - () The applicant should provide the water demands and calculations to the Engineering Division so it can be included in the State Water Projects Plan Update.

() Additional Comments: _____

() Other: _____

Should you have any questions, please call Mr. Andrew Monden of the Planning Branch at 587-0229.

Signed: Eric T. Hirano
ERIC T. HIRANO, CHIEF ENGINEER

Date: 3/23/04

45216

LINDA LINGLE
GOVERNOR OF HAWAII



- TO: ADMINISTRATOR
- ASST ADMIN
- DEV BR
- PLAN BR
- RES MGT BR
- CLERICAL
- ADMIN ASST
- INTERP BR



RECEIVED
LAND DIVISION

PETER T. YOUNG
CHAIRPERSON
BOARD OF LAND AND NATURAL RESOURCES
COMMISSION ON WATER RESOURCE MANAGEMENT

DAN DAVIDSON
DEPUTY DIRECTOR - LAND

YVONNE Y. IZU
DEPUTY DIRECTOR - WATER

2004 SEP 22 P 3:32

- FOR: CIRC/POST/STAFF RM
- COMMENTS
- DRAFT REPLY
- FILE
- FOLLOW UP
- INFO
- RUN COPIES
- RUSH DUE
- SEE ME

STATE OF HAWAII
DEPARTMENT OF LAND AND NATURAL RESOURCES
LAND DIVISION

POST OFFICE BOX 621
HONOLULU, HAWAII 96809
September 13, 2004

- AQUATIC RESOURCES
- BOATING AND OCEAN RECREATION
- BUREAU OF CONVEYANCES
- COMMISSION ON WATER RESOURCE MANAGEMENT
- CONSERVATION AND COASTAL LANDS
- CONSERVATION AND RESOURCES ENFORCEMENT
- ENGINEERING
- FORESTRY AND WILDLIFE
- HISTORIC PRESERVATION
- KAHOOLAWE ISLAND RESERVE COMMISSION
- LAND
- STATE PARKS

LD/NAV
LOUISSEWERDEA
DEPT COPY TO

Suspense Date: 9/20/04

MEMORANDUM:

- TO:
- Division of Aquatic Resources
 - XXX Division of Forestry & Wildlife
 - XXX Division of State Parks
 - Division of Boating and Ocean Recreation
 - XXX Engineering Division
 - XXX Commission on Water Resource Management
 - XXX Office of Conservation and Coastal Land
 - XXX Land-Oahu District Land Office

RECEIVED
STATE PARKS DIV
04 SEP 14 AM 10:46
DEPT OF LAND & NATURAL RESOURCES

FROM: Dierdre S. Mamiya, Administrator
Land Division

SUBJECT: Draft Environmental Assessment

Project: Saint Louis Heights Sewer System Improvements

Location: Honolulu. Island of Oahu, Hawaii

Consultant: Wilson Okamoto Corporation (Rodney Funakoshi)

Agency: C&CoH Department of Design and Construction

Please review the subject DEA submit your comment (if any) to us on division letterhead signed and dated by the suspense date. If we do not receive a response by the suspense date, we will assume there are no comments.

Note: One copy of the document is available for your review in the Land Division Office, Room 220.

Should you need more time to review this matter, please contact Nicholas A. Vaccaro at 587-0384.

() No comments. () Comments attached.

Date: 9/21/04 Signed: [Signature]

Division: State Parks Name: Daniel S. Quinlan

LINDA LINGLE
GOVERNOR OF HAWAII

RECEIVED
LAND DIVISION



2004 SEP 21 A 10: 02



DEPT. OF LAND &
NATURAL RESOURCES
STATE OF HAWAII

STATE OF HAWAII
DEPARTMENT OF LAND AND NATURAL RESOURCES
LAND DIVISION

POST OFFICE BOX 621
HONOLULU, HAWAII 96809
September 13, 2004

PETER T. YOUNG
CHAIRPERSON
BOARD OF LAND AND NATURAL RESOURCES
COMMISSION ON WATER RESOURCE MANAGEMENT

DAN DAVIDSON
DEPUTY DIRECTOR - LAND

YVONNE Y. IZU
DEPUTY DIRECTOR - WATER

AQUATIC RESOURCES
BOATING AND OCEAN RECREATION
BUREAU OF CONVEYANCES
COMMISSION ON WATER RESOURCE MANAGEMENT
CONSERVATION AND COASTAL LANDS
CONSERVATION AND RESOURCES ENFORCEMENT
ENGINEERING
FORESTRY AND WILDLIFE
HISTORIC PRESERVATION
KAHOOLAWE ISLAND RESERVE COMMISSION
LAND
STATE PARKS

LD/NAV
LOUISSEWERDEA.CMT

Suspense Date: 9/20/04

MEMORANDUM:

TO: Division of Aquatic Resources
XXX Division of Forestry & Wildlife
XXX Division of State Parks
Division of Boating and Ocean Recreation
XXX Engineering Division
XXX Commission on Water Resource Management
XXX Office of Conservation and Coastal Lands
XXX Land-Oahu District Land Office

FROM: Dierdre S. Mamiya, Administrator
Land Division

SUBJECT: Draft Environmental Assessment
Project: Saint Louis Heights Sewer System Improvements
Location: Honolulu. Island of Oahu, Hawaii
Consultant: Wilson Okamoto Corporation (Rodney Funakoshi)
Agency: C&CoH Department of Design and Construction

Please review the subject DEA submit your comment (if any) to us on division letterhead signed and dated by the suspense date. If we do not receive a response by the suspense date, we will assume there are no comments.

Note: One copy of the document is available for your review in the Land Division Office, Room 220.

Should you need more time to review this matter, please contact Nicholas A. Vaccaro at 587-0384.

No comments.

Comments attached.

Date: SEP 15 2004

Signed:

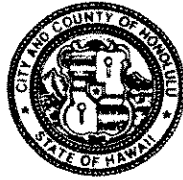
Division: _____

Name: **PAUL J. CONRY, ADMINISTRATOR**

DIVISION OF FORESTRY AND WILDLIFE

DEPARTMENT OF DESIGN AND CONSTRUCTION
CITY AND COUNTY OF HONOLULU

650 SOUTH KING STREET, 11TH FLOOR
HONOLULU, HAWAII 96813
Phone: (808) 523-4564 • Fax: (808) 523-4567
Web site: www.honolulu.gov



MUFI HANNEMANN
MAYOR

WAYNE M. HASHIRO, P.E.
ACTING DIRECTOR

EUGENE C. LEE, P.E.
DEPUTY DIRECTOR

WW.PDW 05-035

March 3, 2005

Ms. Deirdre S. Mamiya, Administrator
Land Division
Department of Land and Natural Resources
State of Hawaii
P.O. Box 621
Honolulu, Hawaii 96809

Dear Ms. Mamiya:

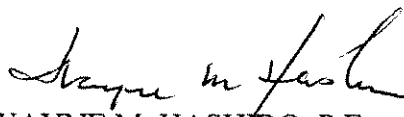
Subject: Draft Environmental Assessment
Saint Louis Heights Sewer System Improvements
Honolulu, Oahu, Hawaii

Thank you for your letter of September 24, 2004 forwarding comments from the Department of Land and Natural Resources' Divisions. We acknowledge that the Engineering Division's comments dated March 23, 2004, which stated that the project site is located in flood hazard zone "X", are still applicable.

We appreciate your participation in the environmental review process.

If there are any questions, please contact Wes Yokoyama at 527-6904.

Very truly yours,


WAYNE M. HASHIRO, P.E.
Acting Director

cc: Wilson Okamoto Corporation

UNIVERSITY OF HAWAII AT MĀNOA
Environmental Center

October 22, 2004
EA: 0305

Mr. Raj Rath
City and County of Honolulu
Department of Design and Construction
650 South King Street, 14th floor
Honolulu, Hawai'i, 96813

Dear Mr. Rath:

Draft Environmental Assessment (DEA)
Saint Louis Heights -- Sewer System Improvements
Honolulu, Oahu

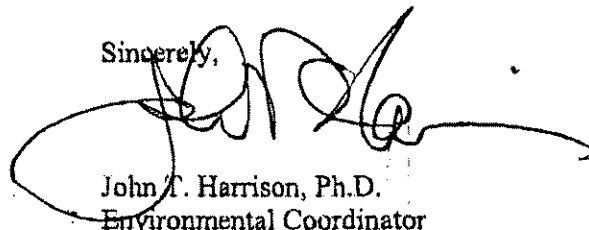
The objective of this project is to correct current hydraulic and physical deficiencies in the sewer lines in the Saint Louis Heights area. Specific project activities include trenching and excavation along existing collectors embedded in the St. Louis Drive roadbed, replacement of damaged and deteriorated sewer lines, reconstruction of connectors and manholes, and repaving after completion of repairs.

The Environmental Center conducted this review with the assistance of Roger Babcock, Civil and Environmental Engineering; and Kerry Halford, Environment Center.

This draft EA is written clearly and covers the potential impacts and mitigation measures adequately. A National Pollution Discharge Elimination System (NPDES) permit (CWA §402) will be required to address storm water discharges to the collection system during the project. However, this project should not have any impacts on groundwater or surface water resources.

Thank you for the opportunity to review this Draft EA.

Sincerely,

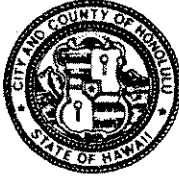


John T. Harrison, Ph.D.
Environmental Coordinator

cc: OEQC
Wilson Okamoto Corporation
James Moncur, WRRC
Roger Babcock
Kerry Halford

DEPARTMENT OF DESIGN AND CONSTRUCTION
CITY AND COUNTY OF HONOLULU

650 SOUTH KING STREET, 11TH FLOOR
HONOLULU, HAWAII 96813
Phone: (808) 523-4564 • Fax: (808) 523-4567
Web site: www.honolulu.gov



MUFI HANNEMANN
MAYOR

WAYNE M. HASHIRO, P.E.
ACTING DIRECTOR

EUGENE C. LEE, P.E.
DEPUTY DIRECTOR

WW.PDW 05-050

March 7, 2005

Mr. John T. Harrison, Ph.D., Environmental Coordinator
University of Hawaii Environmental Center
2500 Dole Street
Krauss Annex 19
Honolulu, Hawaii 96822

Dear Dr. Harrison

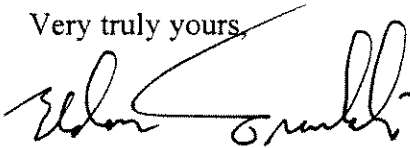
Subject: Draft Environmental Assessment
Saint Louis Heights Sewer System Improvements
Honolulu, Oahu, Hawaii

Thank you for your letter of October 22, 2004 stating that the Draft Environmental Assessment covers the potential impacts and mitigation measures adequately. As noted in your letter, a National Pollutant Discharge Elimination System (NPDES) permit for the project will be procured and Best Management Practices will be utilized to minimize impact on water resources.

We appreciate your participation in the environmental review process.

If there are any questions, please contact Wes Yokoyama at 527-6904.

Very truly yours,

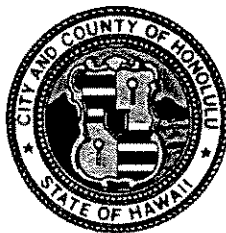

WAYNE M. HASHIRO, P.E.
Acting Director

cc: Wilson Okamoto Corporation

DEPARTMENT OF FACILITY MAINTENANCE
CITY AND COUNTY OF HONOLULU
1000 ULUOHIA STREET, SUITE 215, KAPOLEI, HAWAII 96707
TELEPHONE : (808) 692-5054 FAX: (808) 692-5857

JEREMY HARRIS
MAYOR

RECEIVED
OCT 15 2004
WILSON OKAMOTO CORPORATION



LARRY J. LEOPARDI, P.E.
DIRECTOR AND CHIEF ENGINEER

JOSEPH MAGALDI
DEPUTY DIRECTOR


IN REPLY REFER TO:
DRM 04-884

October 14, 2004

MEMORANDUM

TO: TIMOTHY E. STEINBERGER, P.E., DIRECTOR
DEPARTMENT OF DESIGN AND CONSTRUCTION

ATTENTION: RAJ RATH

FROM: 
LARRY LEOPARDI, P.E., DIRECTOR AND CHIEF ENGINEER
DEPARTMENT OF FACILITY MAINTENANCE

SUBJECT: DRAFT ENVIRONMENTAL ASSESSMENT (DEA)
SAINT LOUIS HEIGHTS SEWER REHABILITATION
SAINT LOUIS HEIGHTS, HONOLULU, OAHU

Thank you for the opportunity to review the subject DEA,

We support the "pipe bursting" and "cured-in-place" pipe lining methods for existing pipeline replacement and rehabilitation.

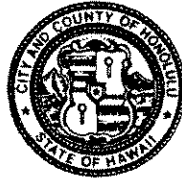
We request that open trench construction be kept to a minimum. Many of the roadways affected by the sewer pipeline rehabilitation will be resurfaced after completion of an ongoing new water line installation project in the Saint Louis Heights area. The water line installation and roadway resurfacing is a joint project being administered by the Board of Water Supply and the Department of Design and Construction. In addition, the asphalt portion of Bertram Street from the 1900 block to its mauka end will be resurfaced by the end of this year as part of a separate project, Rehabilitation of Various Streets, FY 05 (2), Job No. 33-04.

Should you have any questions, please call Charles Pignataro of our Division of Road Maintenance, at 484-7697.

cc: State of Hawaii Department of Health
Wilson Okamoto Corporation

DEPARTMENT OF DESIGN AND CONSTRUCTION
CITY AND COUNTY OF HONOLULU

650 SOUTH KING STREET, 11TH FLOOR
HONOLULU, HAWAII 96813
Phone: (808) 523-4564 • Fax: (808) 523-4567
Web site: www.honolulu.gov



MUFI HANNEMANN
MAYOR

WAYNE M. HASHIRO, P.E.
ACTING DIRECTOR

EUGENE C. LEE, P.E.
DEPUTY DIRECTOR

WW.PDW 05-034

March 3, 2005

MEMORANDUM

TO: MS. LAVERNE HIGA, P.E., ACTING DIRECTOR AND CHIEF ENGINEER
DEPARTMENT OF FACILITY MAINTENANCE

FROM: 
WAYNE M. HASHIRO, P.E., ACTING DIRECTOR
DEPARTMENT OF DESIGN AND CONSTRUCTION

SUBJECT: DRAFT ENVIRONMENTAL ASSESSMENT
SAINT LOUIS HEIGHTS SEWER SYSTEM IMPROVEMENTS
HONOLULU, OAHU, HAWAII

Thank you for your memorandum of October 14, 2004 supporting the pipe bursting and cured-in-place pipe lining methods for pipeline replacement and rehabilitation. As requested, open trench construction will be kept to a minimum. Open trench construction will be used to replace pipelines only if pipe bursting or cured-in-place pipe lining methods are infeasible.

We appreciate your participation in the environmental review process.

If there are any questions, please contact Wes Yokoyama at 527-6904.

cc: Wilson Okamoto Corporation

RECEIVED
SEP 21 2004

WILSON OKAMOTO CORPORATION

September 20, 2004

TO: TIMOTHY E. STEINBERGER, P.E., DIRECTOR
DEPARTMENT OF DESIGN AND CONSTRUCTION

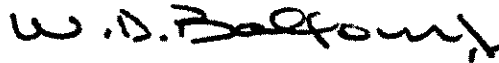
FROM: WILLIAM D. BALFOUR, JR., DIRECTOR

SUBJECT: DRAFT ENVIRONMENTAL ASSESSMENT
SAINT LOUIS HEIGHTS SEWER REHABILITATION
SAINT LOUIS HEIGHTS, HONOLULU, HAWAII

Thank you for the opportunity to review and comment on the Draft Environmental Assessment relating to the Saint Louis Heights Sewer Rehabilitation Project.

The Department of Parks and Recreation has no comment on the proposed sewer improvements.

Should you have any questions, please contact Mr. John Reid, Planner, at 692-5454.



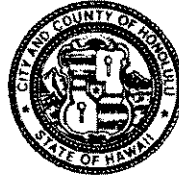
WILLIAM D. BALFOUR, JR.
Director

WDB:mk (J. Reid, ESD)
(76101)

cc: Ms. Genevieve Salmonson, Director, Office of Environmental Quality Control
✓ Mr. Dean Minakami, Wilson Okamoto Corporation

DEPARTMENT OF DESIGN AND CONSTRUCTION
CITY AND COUNTY OF HONOLULU

650 SOUTH KING STREET, 11TH FLOOR
HONOLULU, HAWAII 96813
Phone: (808) 523-4564 • Fax: (808) 523-4567
Web site: www.honolulu.gov



MUFI HANNEMANN
MAYOR

WAYNE M. HASHIRO, P.E.
ACTING DIRECTOR

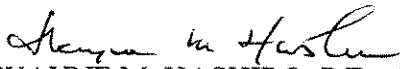
EUGENE C. LEE, P.E.
DEPUTY DIRECTOR

WW.PDW 05-038

March 3, 2005

MEMORANDUM

TO: MR. LESTER K.C. CHANG, ACTING DIRECTOR
DEPARTMENT OF PARKS AND RECREATION

FROM: 
WAYNE M. HASHIRO, P.E., ACTING DIRECTOR
DEPARTMENT OF DESIGN AND CONSTRUCTION

SUBJECT: DRAFT ENVIRONMENTAL ASSESSMENT
SAINT LOUIS HEIGHTS SEWER SYSTEM IMPROVEMENTS
HONOLULU, OAHU, HAWAII

Thank you for your memorandum of September 20, 2004 stating that you have no comment on the proposed project.

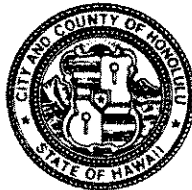
We appreciate your participation in the environmental review process.

If you have any questions, please contact Wes Yokoyama at 527-6904.

cc: Wilson Okamoto Corporation

DEPARTMENT OF PLANNING AND PERMITTING
CITY AND COUNTY OF HONOLULU
650 SOUTH KING STREET, 7TH FLOOR • HONOLULU, HAWAII 96813
PHONE: (808) 523-4414 • FAX: (808) 527-6743
DEPT. WEB SITE: www.honolulu.gov • CITY WEB SITE: www.honolulu.gov

JEREMY HARRIS
MAYOR



ERIC G. CRISPIN, AIA
DIRECTOR

BARBARA KIM STANTON
DEPUTY DIRECTOR

04WWB146 (SG)
2004/ELOG-2097

October 20, 2004

MEMORANDUM

TO: TIMOTHY E. STEINBERGER, P.E., DIRECTOR
DEPARTMENT OF DESIGN AND CONSTRUCTION

ATTN: RAJ RATH
WASTEWATER DIVISION

FROM: *Dennis M. Nishimura*
For ERIC G. CRISPIN, AIA, DIRECTOR
DEPARTMENT OF PLANNING AND PERMITTING

RECEIVED
OCT 21 2004

WILSON OKAMOTO CORPORATION

SUBJECT: **ST. LOUIS HEIGHTS SEWER SYSTEM IMPROVEMENTS**
DRAFT ENVIRONMENTAL ASSESSMENT

This is in response to Wilson Okamoto Corporation's letter dated September 7, 2004 requesting comments for the proposed St. Louis Heights Sewer System Improvements. Please explain why a grading, grubbing and stockpiling permit is required. Also, the construction plans will require a One Time Review from the Site Development Division of my department.

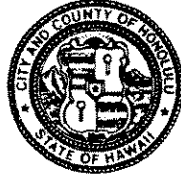
If you have any questions, please contact Mr. Scott Gushi of the Wastewater Branch at 523-4886.

DMN:dl
[331023]

cc: State Dept. of Health (Ms. Genevieve Salmonson, Director)
~~Wilson Okamoto Corporation (Mr. Dean Minakami)~~

DEPARTMENT OF DESIGN AND CONSTRUCTION
CITY AND COUNTY OF HONOLULU

650 SOUTH KING STREET, 11TH FLOOR
HONOLULU, HAWAII 96813
Phone: (808) 523-4564 • Fax: (808) 523-4567
Web site: www.honolulu.gov



MUFI HANNEMANN
MAYOR

WAYNE M. HASHIRO, P.E.
ACTING DIRECTOR

EUGENE C. LEE, P.E.
DEPUTY DIRECTOR

WW.PDW 05-037

March 3, 2005

MEMORANDUM

TO: MR. HENRY ENG, FAICP, ACTING DIRECTOR
DEPARTMENT OF PLANNING AND PERMITTING

FROM: *Wayne M. Hashiro*
WAYNE M. HASHIRO, P.E., ACTING DIRECTOR
DEPARTMENT OF DESIGN AND CONSTRUCTION

SUBJECT: DRAFT ENVIRONMENTAL ASSESSMENT
SAINT LOUIS HEIGHTS SEWER SYSTEM IMPROVEMENTS
HONOLULU, OAHU, HAWAII

Thank you for your memorandum of October 20, 2004 commenting on the subject Draft Environmental Assessment (EA). The Draft EA states that a grading, grubbing and stockpiling permit may be required because although trenchless construction methods are proposed to be used to repair and replace sewerlines, it is possible that excavation and open trench construction may be necessary to replace certain pipeline segments if these methods are infeasible.

We acknowledge that the construction plans are subject to a One Time Review by your Site Development Division.

We appreciate your participation in the environmental review process.

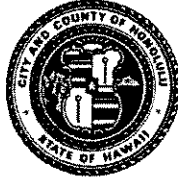
If you have any questions, please contact Wes Yokoyama at 527-6904.

cc: Wilson Okamoto Corporation

DEPARTMENT OF TRANSPORTATION SERVICES
CITY AND COUNTY OF HONOLULU

650 SOUTH KING STREET, 3RD FLOOR
HONOLULU, HAWAII 96813
Phone: (808) 523-4529 • Fax: (808) 523-4730 • Internet: www.co.honolulu.hi.us

JEREMY HARRIS
MAYOR



GEORGE "KEOKI" MIYAMOTO
ACTING DIRECTOR

ROBERT J. FISHMAN
DEPUTY DIRECTOR

TP9/04-76062R

October 5, 2004

MEMORANDUM

TO: TIMOTHY E. STEINBERGER, P.E., DIRECTOR
DEPARTMENT OF DESIGN AND CONSTRUCTION

ATTN: RAJ RATH

FROM: GEORGE "KEOKI" MIYAMOTO, ACTING DIRECTOR

SUBJECT: SAINT LOUIS HEIGHTS SEWER REHABILITATION

RECEIVED
OCT 08 2004
WILSON OKAMOTO CORPORATION

In response to the September 7, 2004 letter from Wilson Okamoto Corporation, we have reviewed the draft environmental assessment (EA) for the subject project. The following comments are the result of this review:

1. On Page 3-4 of the draft EA, the second sentence of the Impact and Mitigation Measures paragraph of Section 3.9.1 Transportation System should refer to Table 2-4, not Table 2-3.
2. Section 3.9.1 should also discuss how access to private property would be provided when construction work is in progress.
3. Prior to construction, the contractor shall notify Oahu Transit Services, Inc. of the project location, scope of work, proposed closure of any street or traffic lanes and need to temporarily relocate any bus stops.

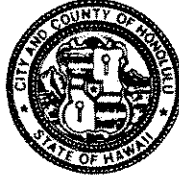
Should you have any questions regarding these comments, please contact Faith Miyamoto of the Transportation Planning Division at Local 6976.


GEORGE "KEOKI" MIYAMOTO

cc: Ms. Genevieve Salmonson, Director
Office of Environmental Quality Control
✓ Mr. Dean Minakami, Wilson Okamoto Corporation

DEPARTMENT OF DESIGN AND CONSTRUCTION
CITY AND COUNTY OF HONOLULU

650 SOUTH KING STREET, 11TH FLOOR
HONOLULU, HAWAII 96813
Phone: (808) 523-4564 • Fax: (808) 523-4567
Web site: www.honolulu.gov



MUFI HANNEMANN
MAYOR

WAYNE M. HASHIRO, P.E.
ACTING DIRECTOR

EUGENE C. LEE, P.E.
DEPUTY DIRECTOR

WW.PDW 05-039

March 3, 2005

MEMORANDUM

TO: MR. EDWARD Y. HIRATA, ACTING DIRECTOR
DEPARTMENT OF TRANSPORTATION SERVICES

FROM: *Wayne M. Hashiro*
WAYNE M. HASHIRO, P.E., ACTING DIRECTOR
DEPARTMENT OF DESIGN AND CONSTRUCTION

SUBJECT: DRAFT ENVIRONMENTAL ASSESSMENT
SAINT LOUIS HEIGHTS SEWER SYSTEM IMPROVEMENTS
HONOLULU, OAHU, HAWAII

Thank you for your memorandum of October 5, 2004 commenting on the subject Draft Environmental Assessment (EA). As noted, we will correct Section 3.9.1 of the Draft EA to reference Table 2-4 rather than Table 2-3. We will also include a discussion in section 3.9.1 describing measures that may be taken to provide access to private property when construction work is in progress. Finally, we acknowledge that the Contractor is to notify Oahu Transit Services of the project location, scope of work, proposed road closures and need to temporarily relocate any bus stops prior to construction.

We appreciate your participation in the environmental review process.

If there are any questions, please contact Wes Yokoyama at 527-6904.

cc: Wilson Okamoto Corporation

BOARD OF WATER SUPPLY

CITY AND COUNTY OF HONOLULU
630 SOUTH BERETANIA STREET
HONOLULU, HI 96843



September 15, 2004

JEREMY HARRIS, Mayor

EDDIE FLORES, JR., Chairman
CHARLES A. STED, Vice-Chairman
HERBERT S. K. KAOPUA, SR.
DAROLYN H. LENDIO

RODNEY K. HARAGA, Ex-Officio
LARRY J. LEOPARDI, Ex-Officio

CLIFFORD S. JAMILE
Manager and Chief Engineer

DONNA FAY K. KIYOSAKI
Deputy Manager and Chief Engineer

City and County of Honolulu
Department of Design and Construction
650 South King Street, 14th Floor
Honolulu, Hawaii 96813

RECEIVED
SEP 20 2004

WILSON OKAMOTO CORPORATION

Attention: Raj Rath

Gentlemen:

Subject: Draft Environmental Assessment for Saint Louis Heights Sewer Rehabilitation

Thank you for the opportunity to comment on the subject document.

Our comments in our letter dated March 17, 2004, which is included in the Draft Environmental Assessment, are still applicable.

If you have any questions, please contact Joseph Kaakua at 748-5442.

Very truly yours,

KEITH S. SHIDA
Principal Executive
Customer Care Unit

cc: Genevieve Salmonson, Office of Environmental Quality Control
Dean Murakami, Wilson Okamoto Corporation

DEPARTMENT OF DESIGN AND CONSTRUCTION
CITY AND COUNTY OF HONOLULU

650 SOUTH KING STREET, 11TH FLOOR
HONOLULU, HAWAII 96813
Phone: (808) 523-4564 • Fax: (808) 523-4567
Web site: www.honolulu.gov



MUFI HANNEMANN
MAYOR

WAYNE M. HASHIRO, P.E.
ACTING DIRECTOR

EUGENE C. LEE, P.E.
DEPUTY DIRECTOR

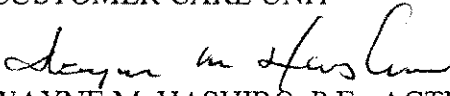
WW.PDW 05-032

March 3, 2005

MEMORANDUM

TO: MR. CLIFFORD JAMILE, MANAGER AND CHIEF ENGINEER
BOARD OF WATER SUPPLY

ATTN: MR. KEITH SHIDA
CUSTOMER CARE UNIT

FROM: 
WAYNE M. HASHIRO, P.E., ACTING DIRECTOR
DEPARTMENT OF DESIGN AND CONSTRUCTION

SUBJECT: DRAFT ENVIRONMENTAL ASSESSMENT
SAINT LOUIS HEIGHTS SEWER SYSTEM IMPROVEMENTS
HONOLULU, OAHU, HAWAII

Thank you for your letter of September 15, 2004 stating that the comments in your letter dated March 17, 2004, which is included in the Draft Environmental Assessment, are still applicable.

We appreciate your participation in the environmental review process.

If you have any questions, please contact Wes Yokoyama at 527-6904.

cc: Wilson Okamoto Corporation



P.O. Box 3000
Honolulu, Hawaii 96802-3000

September 14, 2004

City and County of Honolulu
Department of Design and Construction
650 South King Street, 14th Floor
Honolulu, Hawaii 96813

RECEIVED
SEP 15 2004

WILSON OKAMOTO CORPORATION

Attention: Mr. Raj Rath

Gentlemen:

Subject: Draft Environmental Assessment for
Saint Louis Heights Sewer Rehabilitation

Please be advised that The Gas Company, LLC, maintains underground utility gas mains in the project vicinity, which serves commercial and residential customers in the area. We would appreciate your consideration during the project planning and design process to minimize any potential conflicts with the existing gas facilities in the project area.

Thank you for the opportunity to comment on the Draft Environmental Assessment. Should there be any questions, or if additional information is desired, please call me at 594-5570.

Sincerely,

The Gas Company, LLC

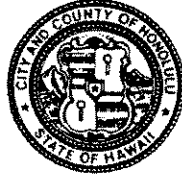
Charles E. Calvet, P.E.
Manager, Engineering

CEC:krs
04-242

cc: Ms. Genevieve Salmonson, Director, State of Hawaii, Department of Health
Mr. Dean Minakami, Wilson Okamoto Corporation

DEPARTMENT OF DESIGN AND CONSTRUCTION
CITY AND COUNTY OF HONOLULU

650 SOUTH KING STREET, 11TH FLOOR
HONOLULU, HAWAII 96813
Phone: (808) 523-4564 • Fax: (808) 523-4567
Web site: www.honolulu.gov



MUFI HANNEMANN
MAYOR

WAYNE M. HASHIRO, P.E.
ACTING DIRECTOR

EUGENE C. LEE, P.E.
DEPUTY DIRECTOR

WW.PDW 05-040

March 3, 2005

Mr. Charles E. Calvet, P.E., Manager, Engineering
The Gas Company
P.O. Box 3000
Honolulu, Hawaii 96802-3000

Dear Mr. Calvet:

Subject: Draft Environmental Assessment
Saint Louis Heights Sewer System Improvements
Honolulu, Oahu, Hawaii

Thank you for your letter of September 14, 2004 commenting on the subject Draft Environmental Assessment. We acknowledge that The Gas Company maintains underground utility gas mains in the project vicinity and will exercise due caution during construction to avoid potential conflicts with your gas facilities.

We appreciate your participation in the environmental review process.

If there are any questions, please contact Wes Yokoyama at 527-6904.

Very truly yours,

A handwritten signature in cursive script, appearing to read "Wayne M. Hashiro".

WAYNE M. HASHIRO, P.E.
Acting Director

cc: Wilson Okamoto Corporation

P. O. Box 90880
Honolulu, HI 96835-0880

19 Oct 04

To: Raj Rath, Dept. of Design and Construction
From: Wayne Gau, Neighborhood Board No. 5
Subject: St. Louis Heights Sewer Rehabilitation
Draft Environmental Assessment

Please note on p. 3-3, para. 3.7, Historic, Archaeological and Cultural Resources, that there is a City and County-designated historic residence at 3029 Felix Street.

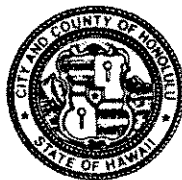
The possibility of allowing area residents to park their vehicles at Kalaepohaku Park on Gulston Street, during the sewer repair work, should be considered. Parking space is already scarce without construction work taking away on-street parking.



cc: Genevieve Salmonson, Environmental Quality
Control, State Health Dept.
Dean Minakami, Wilson Okamoto Corp.
K. Ah Mai, Chair, NB5
K. Swearingen, Pres., SLHCA

DEPARTMENT OF DESIGN AND CONSTRUCTION
CITY AND COUNTY OF HONOLULU

650 SOUTH KING STREET, 11TH FLOOR
HONOLULU, HAWAII 96813
Phone: (808) 523-4564 • Fax: (808) 523-4567
Web site: www.honolulu.gov



MUFI HANNEMANN
MAYOR

WAYNE M. HASHIRO, P.E.
ACTING DIRECTOR

EUGENE C. LEE, P.E.
DEPUTY DIRECTOR

WW.PDW 05-041

March 3, 2005

Mr. Wayne Gau
Neighborhood Board No. 5
P.O. Box 90880
Honolulu, Hawaii 96835-0880

Dear Mr. Gau:

Subject: Draft Environmental Assessment
Saint Louis Heights Sewer System Improvements
Honolulu, Oahu, Hawaii

Thank you for your letter of October 19, 2004 commenting on the subject project. We assure you that the project is anticipated to have no adverse impact on the historic residence at 3029 Felix Street. With regard to on-street parking, as much as possible on-street parking will be maintained during construction of the project. The cured-in-place pipe lining construction method will be used to rehabilitate the sewer pipe in Gulston Street and this should minimize the impact to traffic flow and on-street parking.

We appreciate your participation in the environmental review process.

If there are any questions, please contact Wes Yokoyama at 527-6904.

Very truly yours,

A handwritten signature in cursive script, appearing to read "Wayne M. Hashiro".

WAYNE M. HASHIRO, P.E.
Acting Director

cc: Wilson Okamoto Corporation