

DAVID Y. IGE
GOVERNOR
STATE OF HAWAII

JOSH GREEN
LT. GOVERNOR
STATE OF HAWAII



WILLIAM J. AILA, JR.
CHAIRMAN
HAWAIIAN HOMES COMMISSION

TYLER I. GOMES
DEPUTY TO THE CHAIRMAN

**STATE OF HAWAII
DEPARTMENT OF HAWAIIAN HOME LANDS**

P. O. BOX 1879
HONOLULU, HAWAII 96805

April 26, 2021

Director
Department of Health
Office of Environmental Quality Control
oeqchawaii@doh.hawaii.gov

In reply refer to
PO-21-098

Subject: Determination that a Supplemental Environmental Assessment is not Required for the Kānehili Community Association's Proposed Park

Dear Sir or Madam,

Pursuant to Hawaii Administrative Rules (HAR) Title 11, Chapter 200.1-11, the Department of Hawaiian Home Lands (DHHL) has determined that a Supplemental Statement is not required for the Kānehili Community Association's park on 4.563-acre TMK (1)9-1-151:001.

The Final Environmental Assessment (FEA)/Finding of No Significant Impact (FONSI) for the DHHL East Kapolei Development Parcel B was approved by the Hawaiian Homes Commission and submitted to OEQC for publication in the May 8, 2005 issue of *The Environmental Notice*. The EA has not yet been fully implemented and we have initiated a review of the FEA/FONSI with respect to the Kānehili Community Association's park project. Our analysis determined the following:

1. The FEA/FONSI included an evaluation of the impacts of including an approximately 4.5-acre park within the development along Kapolei Parkway. The inclusion of a park was a key component of the proposed development.
2. The park location identified within the 2005 FEA/FONSI (identified as B3) was found to be better suited for a fire-station. An evaluation of the fire-station was not included in the original EA, so a separate FEA/FONSI was prepared. The fire-station has been constructed in area B3 identified for the park and is operational.
3. The relocation of the park to the area identified and B4 in the 2005 FEA/FONSI will not result in reasonably foreseeable significant effects or un-disclosed cumulative impacts in the FEA/FONSI.
4. The relocation of the park does not prevent the implementation of mitigation measures outlined in the FEA/FONSI.

Determination

Based on the analysis, a supplemental Environmental Assessment is not required for the relocation of the park from the area identified as B3 to a portion of B4 assigned TMK (1)9-1-151:001.

Should you have any questions or require further information regarding this undertaking, please contact malia.m.cox@hawaii.gov or (808) 620-9500.

Mahalo,



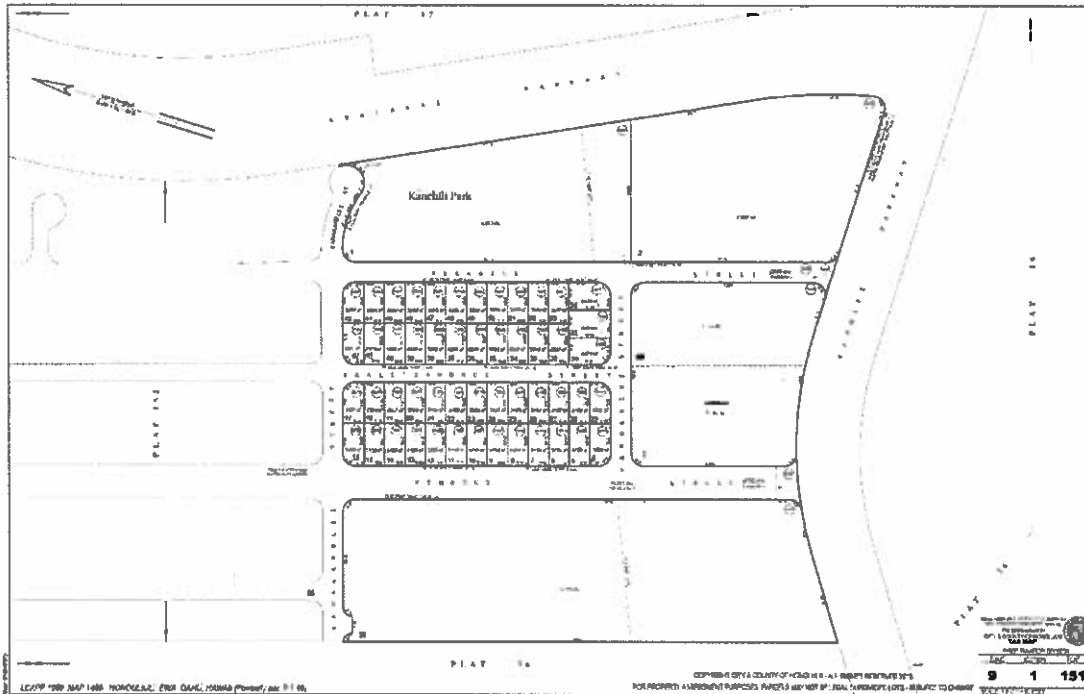
William J. Ailā, Jr.,
Chairman, DHHL

Cc: DHHL-Planning Office
DHHL-Land Management Division
DHHL-Land Development Division

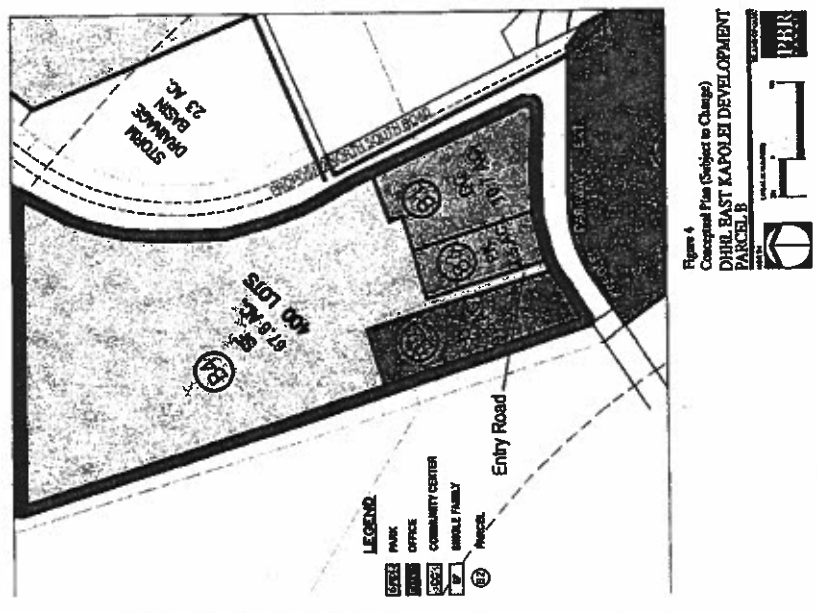
Enclosures

Parcel Map

Figure 4 (Excerpt from Final EA for East Kapolei Development Parcel B)



Location of Kanehili Park [TMK (1)9-1-151:001]



Original Location of Park (Parcel B3) in 2005 Final Environmental Assessment